

# Anatomical Models



### CHILD EAR MODEL

This oversized child's ear illustrates: semi-circular canals and cochlea of the inner ear; auditory ossicles, otitis media (inflammation and simulated fluid in the middle ear); tympanic membrane, temporal and tensor tympani muscles; the model also presents a horizontal eustachian tube typical of a child. Model Size: 4-3/4" x 4" x 3-1/2".

#82300.....\$77.50 ea



### GIANT EAR MODEL

This model shows all major structures related to hearing and balance. Dissects into 3 parts. 4 times enlarged. Size: 14" x 7" x 8 1/2".

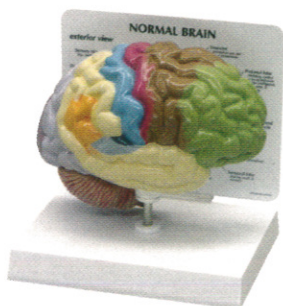
#73075 Ear Model.....\$49.95 ea



### HUMAN EYE MODEL

Approximately 5-times life-size, this finely painted and numbered fiberglass model divides into 7 parts: 2-part outer eye, retina and vitreous humor, 2-part choroid, lens and cornea. Size: 7" x 4" x 4".

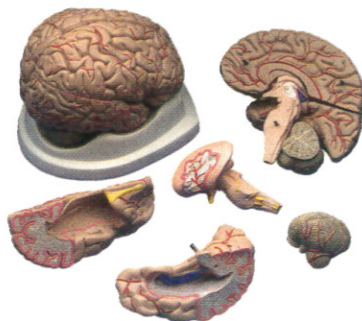
#73069 Eye Model.....\$73.00 ea



### HALF BRAIN SENSORY/MOTOR MODEL

Normal right half brain features: frontal, parietal, occipital and temporal lobes, cerebellum, interthalamic adhesion, corpus callosum, pons, midbrain-central peduncle, olfactory bulb, optic nerve, optic chiasm, mammillary body and medulla oblongata. Model Size: 6-1/2" x 5" x 2-1/2".

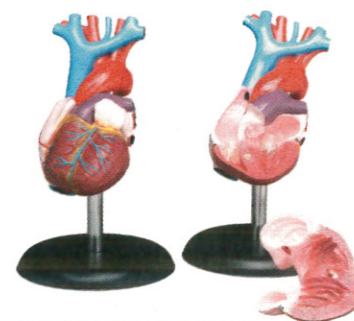
#82950.....\$75.40 ea



### BRAIN WITH ARTERIES MODEL

An educational economy model of the brain. Color markings illustrate arteries (red) and cranial nerves (yellow). Dissects into 8 parts. Life-size, on base. Key card included with 60 labeled structures. Size: 5" x 6" x 6".

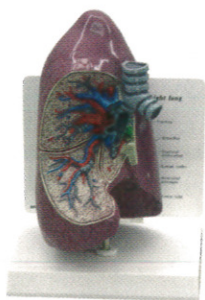
#73072 Brain Model.....\$54.95 ea



### LIFE-SIZE HEART MODEL

An excellent, life-size heart model. Anatomically accurate and great for learning basic external & internal anatomy of the heart. Dissects into 2 parts. Includes key card with 48 labeled structures. Size: 3 1/4" x 3 1/4" x 6".

#73080 Heart Model.....\$49.95 ea



### LUNG MODEL

Full size normal cut-away of right side of lung shows bronchus, arteries, vein, two lymph nodes, bronchial passages and trachea bifurcation. Model Size: -1/4" x 5-1/2" x 8-1/4".

#93100.....\$90.50 ea



### 4-PIECE BRONCHUS MODEL

Four stage cross-section of the bronchus demonstrating the tissue changes occurring in asthma and chronic bronchitis. Four stages: normal bronchus, hypersecretion of the mucous gland, swelling with lymphoid aggregations and smooth-muscle spasm. The model includes: cartilage, mucous glands and plug, spiraling smooth muscles, and the fibroelastic connective tissue and epithelial layers of the bronchus. All stages rotate on hinge pin. Model Size: 3-7/8" x 1-1/2" x 1-3/4"

#93120.....\$56.70 ea



### HYPERTENSION SET

Miniature brain, eye, heart, kidney and artery models. Education card illustrates effects associated with hypertension: ocular pathologies, arteriosclerosis, arterial plaque, kidney failure and stroke. Model Size: 11" tall.

#84000.....\$131.45 ea



### BUDGET PETER/PETRA TORSO

An outstanding value, this torso dissects into a total of 13 parts. 2-part head with removable half brain, 2 lungs, heart, liver, intestines, 2-part female genitalia, 2-part male genitalia and torso on base. Size: 16 1/2" tall. Choking hazard: Small Parts. Not for children under 3 years.

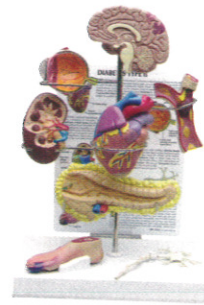
#73089 Budget Peter/Petra Torso.....\$74.50 ea



### MR. THRIFTY SKELETON

An economical teaching skeleton with a user-friendly personality that will encourage children to learn the names of the bones. A heavy metal stand is included. Size 33 1/2" tall.

#16366 Skeleton.....\$61.50 ea



### TYPE II DIABETES SET

Miniature brain, eye, heart, kidney, artery, pancreas, neuron, and foot models. Education card illustrates effects associated with Type II Diabetes: stroke, ocular pathology, hypertensive heart disease, hardening of the kidney, hardening of the arteries, insulin resistance, neuropathy, and foot ulcerations. Model display stands 10" tall.

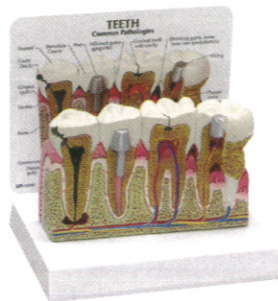
#84010.....\$155.60 ea



### SKIN NORMAL/ACNE MODEL

Enlarged two-sided skin cross-section. The "acne" side displays three conditions: whitehead, blackhead and pustule/cyst. The reverse side illustrates normal skin anatomy. Model Size: 6" x 2-1/4" x 4".

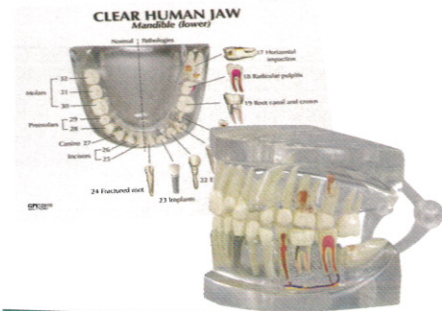
#83751.....\$90.10 ea



### TEETH MODEL

This oversized model of premolars and molars features many common dental problems. The Teeth Model shows abscess, advanced periodontics, cavity, crown, decay, filling, gingivitis, plaque and severe bone loss. Model Size: 5 1/2" x 2" 3 1/2", Card Size: 6 1/2" x 5 1/4". Base Size: 6 1/2" x 5".

#36637.....\$84.40 ea



### CLEAR HUMAN JAW WITH TEETH MODEL

This full size hinged clear cast jaw will allow for viewing of roots. The healthy side will show normal dentition and occlusion. The affected side shows multiple pathologies including super eruption, apical alveolar abscess with caries, periodontal disease, lateral abscess, abfraction, irregular root curvature, impacted canine, erosion, fractured tooth, horizontal impact, radicular pulpitis, root canal with crown, internal resorption, attrition, external resorption of root, implants and fractured root. Model Size: 2 4/5" x 2 1/2" x 2 1/2", Card Size: 6 1/2" x 5 1/4".

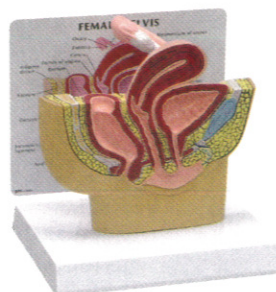
#36639.....\$119.50 ea



### LEFT BREAST WITH IRREGULAR MASSES MODEL

Full size model is made of durable lifelike material with embedded lumps that simulate fibrocystic mass and typical tumor. Model also contains a lactiferous duct. Back side of education card shows locations of irregular masses. Base art shows common self-inspection patterns. Model Size: 8-3/4" x 6-1/4" x 3".

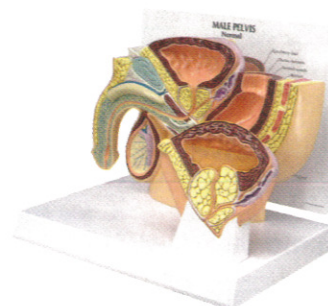
#83401.....\$108.50 ea



### FEMALE PELVIS MODEL

Reduced size, mid-sagittal cross-section of the pelvis showing female anatomy, including the ovary and fallopian tube. Model Size: 6-1/4" x 2-3/4" x 5-1/2".

#83500.....\$79.50 ea



### MALE PELVIS MODEL

Near full size, mid-sagittal section showing the anatomy of the pelvis and prostate. Includes both normal and benign prostatic hyperplasia (BPH) inserts. BPH insert shows increased size of prostate, urethral obstruction, urine retention, and thickening and distention of bladder. Model Size: 9-1/4" x 1-2/5" x 6-1/2".

#83552.....\$86.30 ea