



# Bristol Warren Regional School District

## RIDE Necessity of School Construction Stage II

---

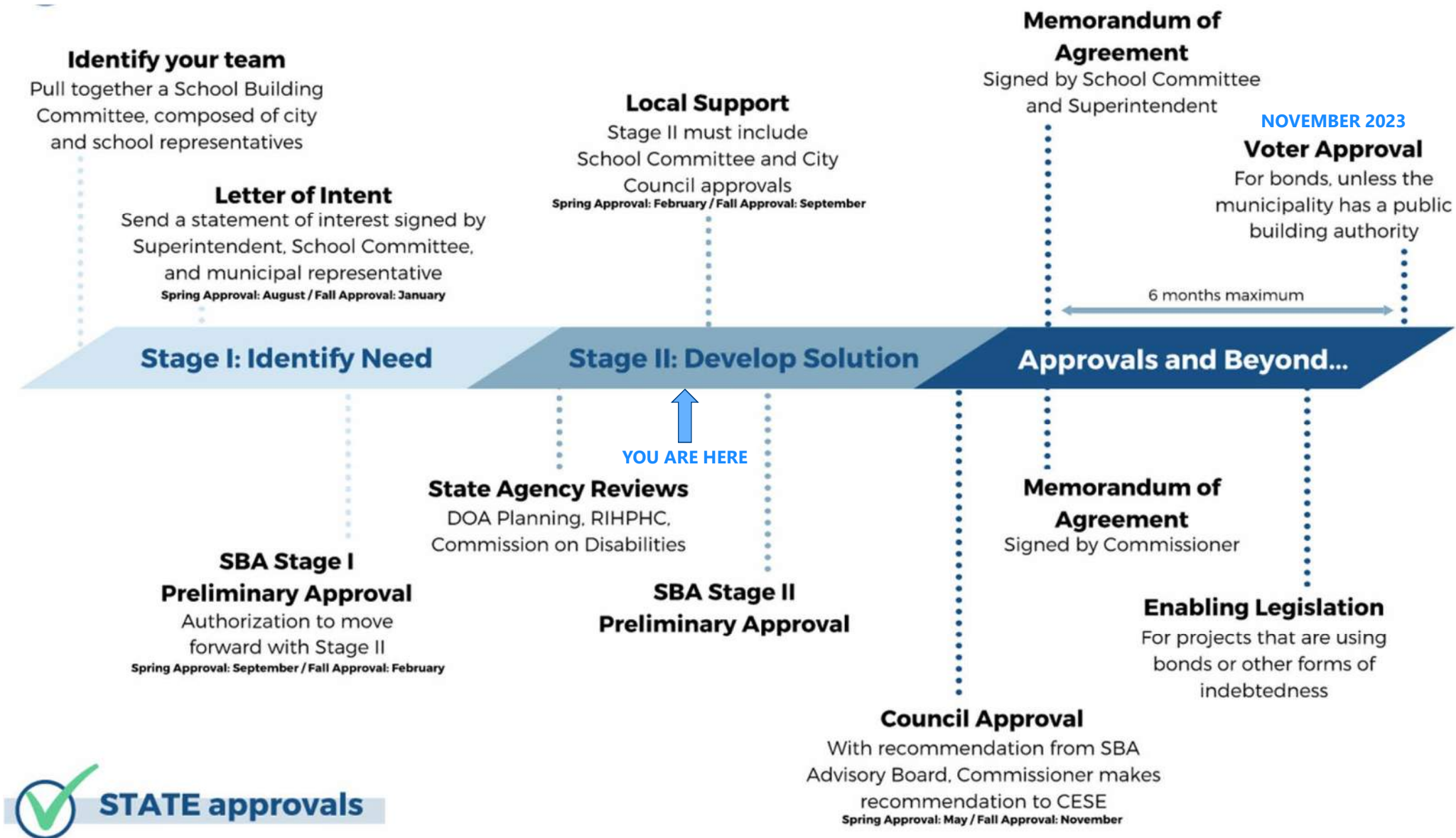


**PMA Consultants**

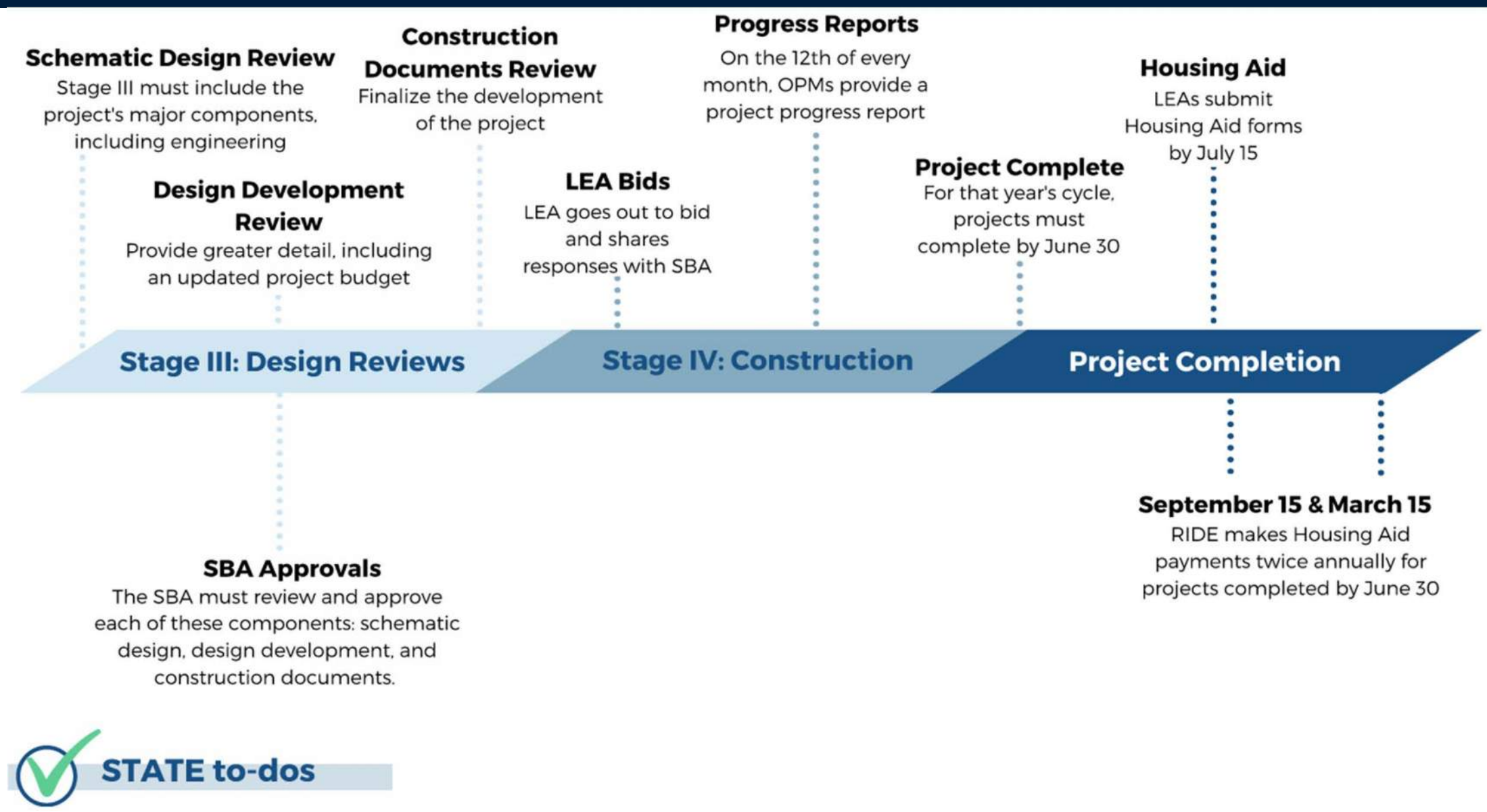
**PERKINS —  
EASTMAN**

**BUILDING COMMITTEE | 07.13.2023**

# RIDE PROCESS OVERVIEW



# RIDE PROCESS OVERVIEW







PMA Consultants

# PROGRESS UPDATE

---



## STAGE II PROGRESS UPDATE

20Jun23 - Integrated Design Meeting #1  
21Jun23 - HS Programming Meeting #1  
21Jun23 - Concert Series Outreach #1  
22Jun23 - AE/OPM Coordination Meeting: *Weekly*  
22Jun23 - Concert Series Outreach #2  
23Jun23 - Concert Series Outreach #3  
24Jun23 - Concert Series Outreach #4  
25Jun23 - Concert Series Outreach #5  
28Jun23 - HS Programming Meeting #2

---

29Jun23 - Building Committee  
29Jun23 - AE/OPM Coordination Meeting: *Weekly*  
29Jun23 - School Committee  
05Jul 23 - Hope & Main Schoolyard Market  
06Jul 23 - Bristol Historic Commission: *Concept Review*  
07Jul 23 - Consult with Planning Dept  
09Jul 23 - Warren Concert Series: (7/6-8/27)

---

12Jul 23 - Building Committee  
13Jul 23 - AE/OPM Coordination Meeting: *Weekly*  
16Jul 23 - Warren Concert Series  
18Jul 23 - RIDEM Meeting  
20Jul 23 - Subconsultant Site Visits: *Second Round*  
03Aug23 - RIDE Stage II Check-in #2

Since Last SBC Meeting

Upcoming

# DESIGN UPDATE

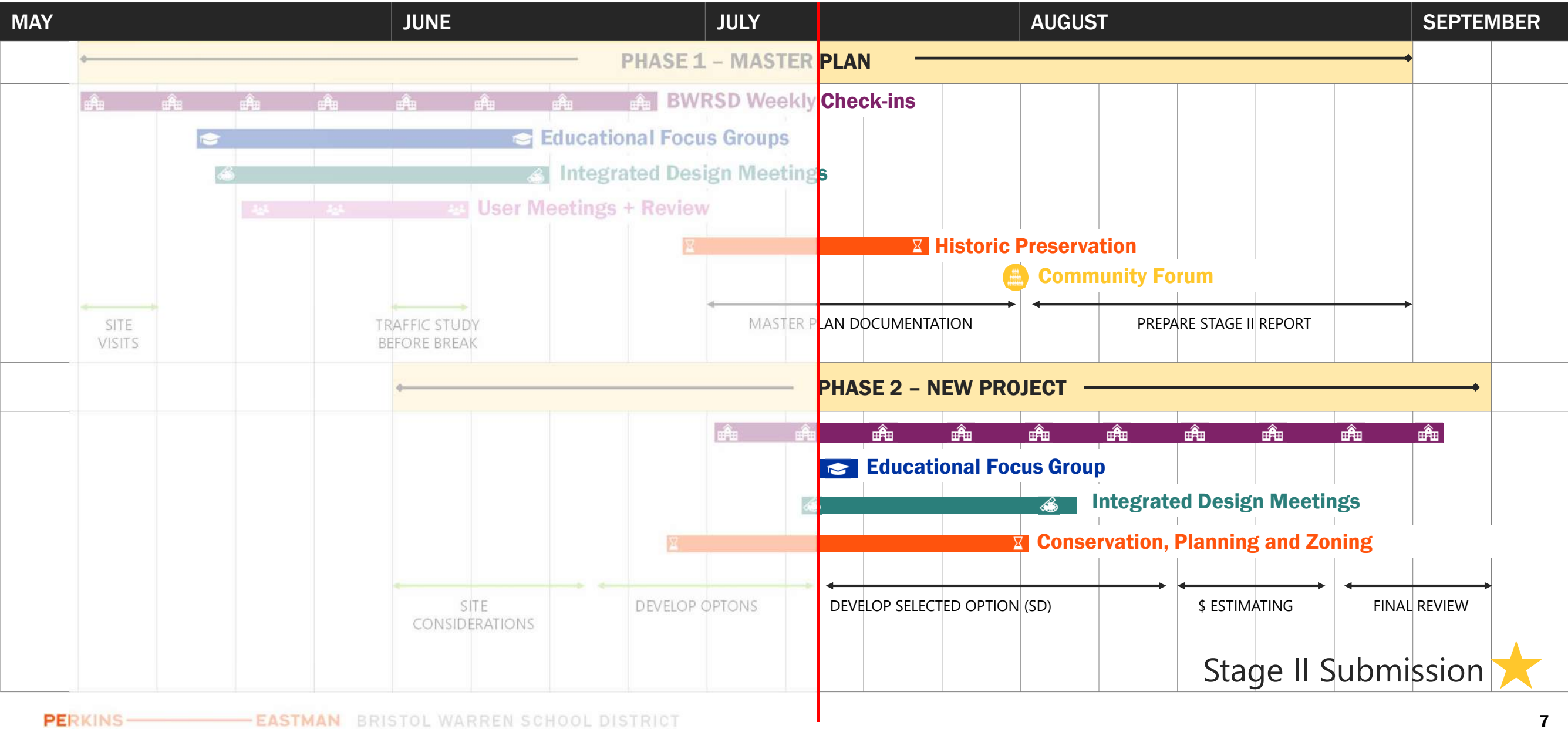
## Underway:

- Traffic Study – Reports in progress
- Demographic Study – Study in progress
- Hazmat Review – High School and Rockwell report received, other schools are a work in progress
- Code/Accessibility: Existing condition reports have been issued to PE
- Draft reports have been received from MEP, structure, technology and site; final reports underway
- Planning Review – Next step is a technical review then a review with the Planning Board
- Historic Preservation Review – Next meeting to review options for Colt Andrews Site
- User Meetings – On going with school principals as needed to finalize Programming

## Upcoming:

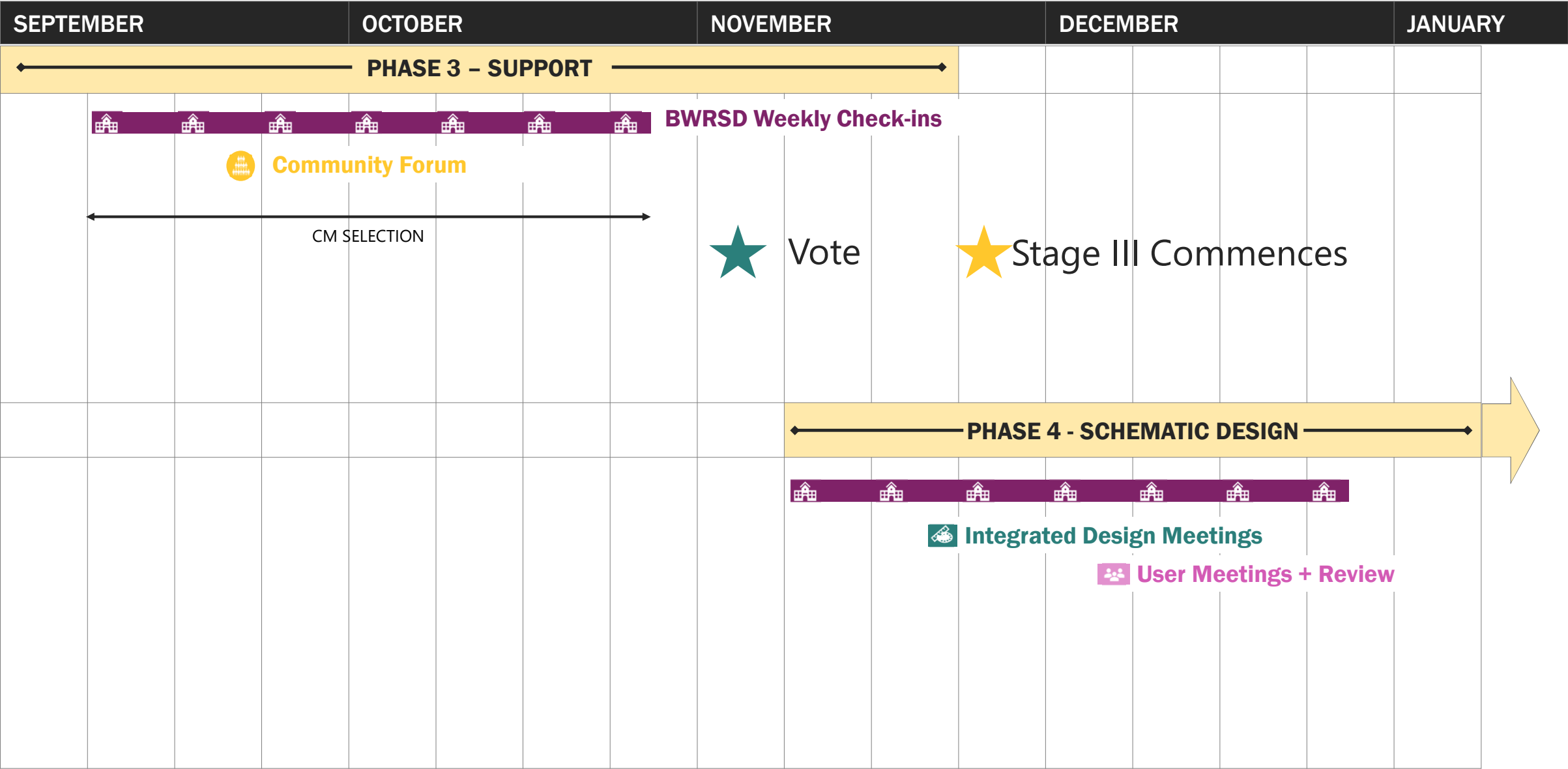
- Geo-technical early August
- Geo-environmental Studies to begin this month
- Conservation – Meetings with RIDEM on July 18th
- Integrated Design Meetings (Systems)– August 1st or 2nd
- Integrated Design Meetings (NE CHPS)– August 7th or 8th

# Proposed Schedule - Summer





# Proposed Schedule - Fall





PMA Consultants

# PROGRAMMING

---

# Programming Update

ELEMENTARY / MIDDLE / HIGH SCHOOL



- ✓ Form the ELT & Kickoff Mtg
- ✓ Data Gathering (& Visioning)
- ✓ Document Exist. Conditions
- ✓ Identify Grade/School Options
- ✓ Chart Projected Needs
- ✓ Superintendent, Principal & Special Educ. Dir. Reviews
- ✓ Test Fit Studies & Feedback
- ✓ Draft Space Needs
- Demographic Recheck
- Rev. Space Needs (& Studies)
- Educational Program Doc.

SPACE SUMMARY & EDUCATIONAL PROGRAM







PMA Consultants

# HISTORIC DISTRICT COMMISSION

---

# Bristol-Warren Regional School District

- Legend:
- 901-1800 Enrollment
  - <900 Enrollment
  - XX Historic District

**Rockwell ES**  
Grades PK – 5  
25,609 SF  
Poor Condition (31%-50%)

**Mt. Hope HS**  
Grades 9 – 12  
177,732 SF  
Poor Condition (31%-50%)

**Guiteras ES**  
Grades PK – 5  
39,107 SF  
Poor Condition (31%-50%)

**Colt - Andrews ES**  
Grades 4 - 5    Grades K - 3  
24,206 SF    31,817 SF  
Average Condition (11%-30%)



**Kickemuit MS**  
Grades 6 – 8  
149,915 SF  
Poor Condition (31%-50%)

**Hugh Cole ES**  
Grades PK – 5  
84,536 SF  
Average Condition (11%-30%)

# Colt - Andrews

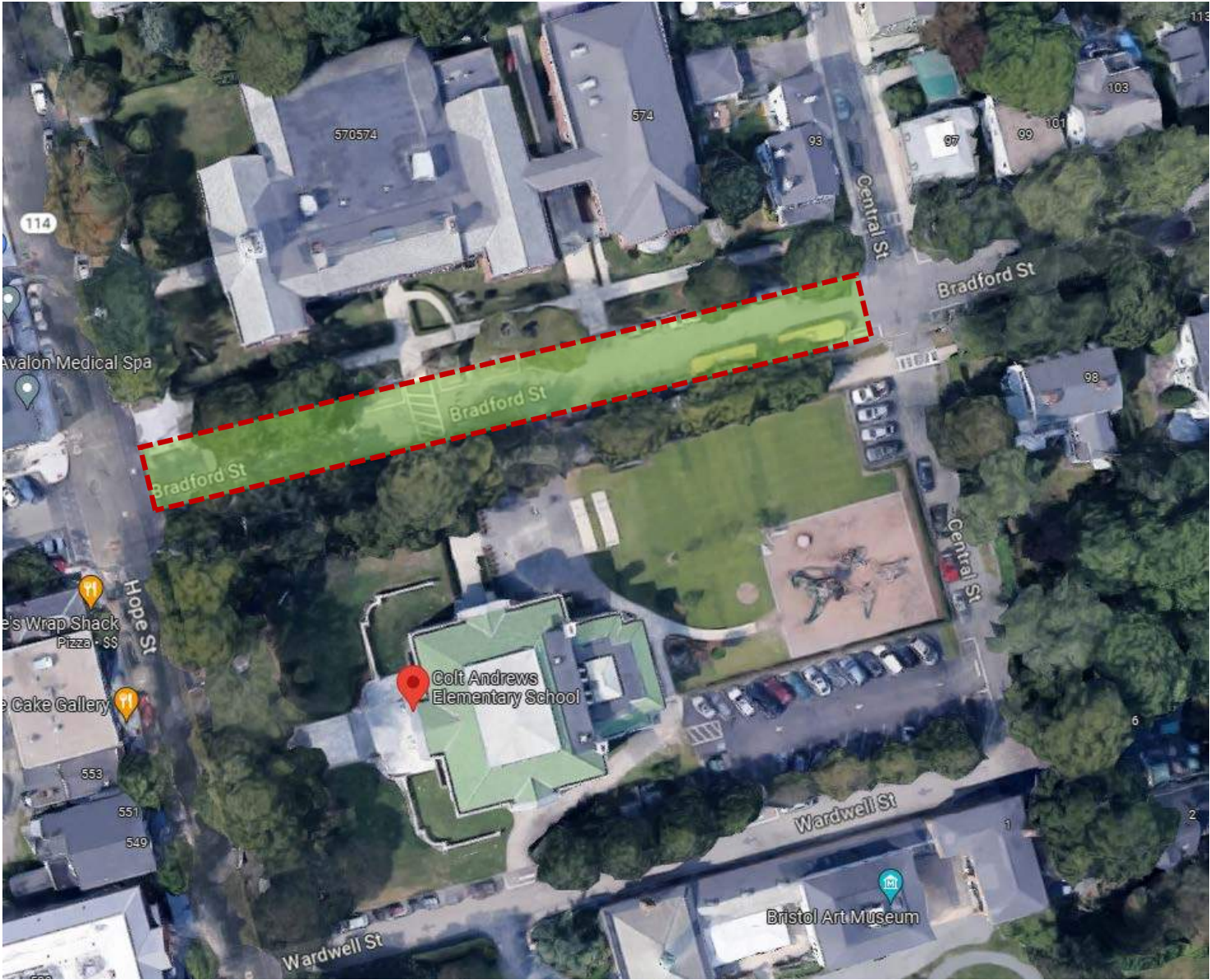
## Current Site Plan

- Schools share same facilities
- Schools split by Bradford St.
- Dropoff on street
- Limited outdoor learning space
- Difficult to secure
- Unsightly chain-link fences





# Colt – Andrews: Creating a Campus



# Colt - Andrews

## Possible Campus Plan:

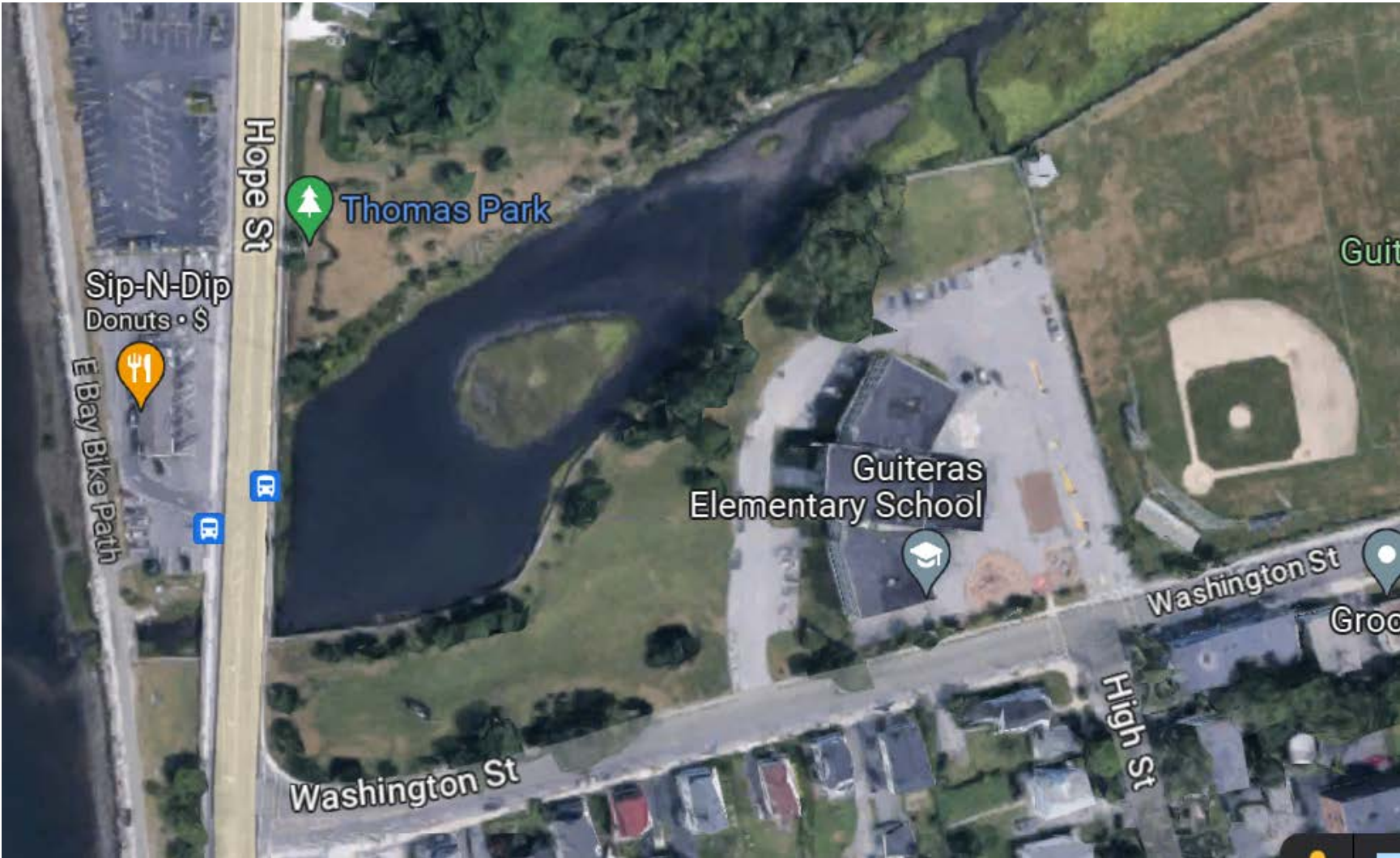
- Increased site safety & security
- Dropoff areas off street
- More outdoor learning space
- More play space
- Historic quality perimeter fence
- Preserve Hope St. appearance





# Guiteras School

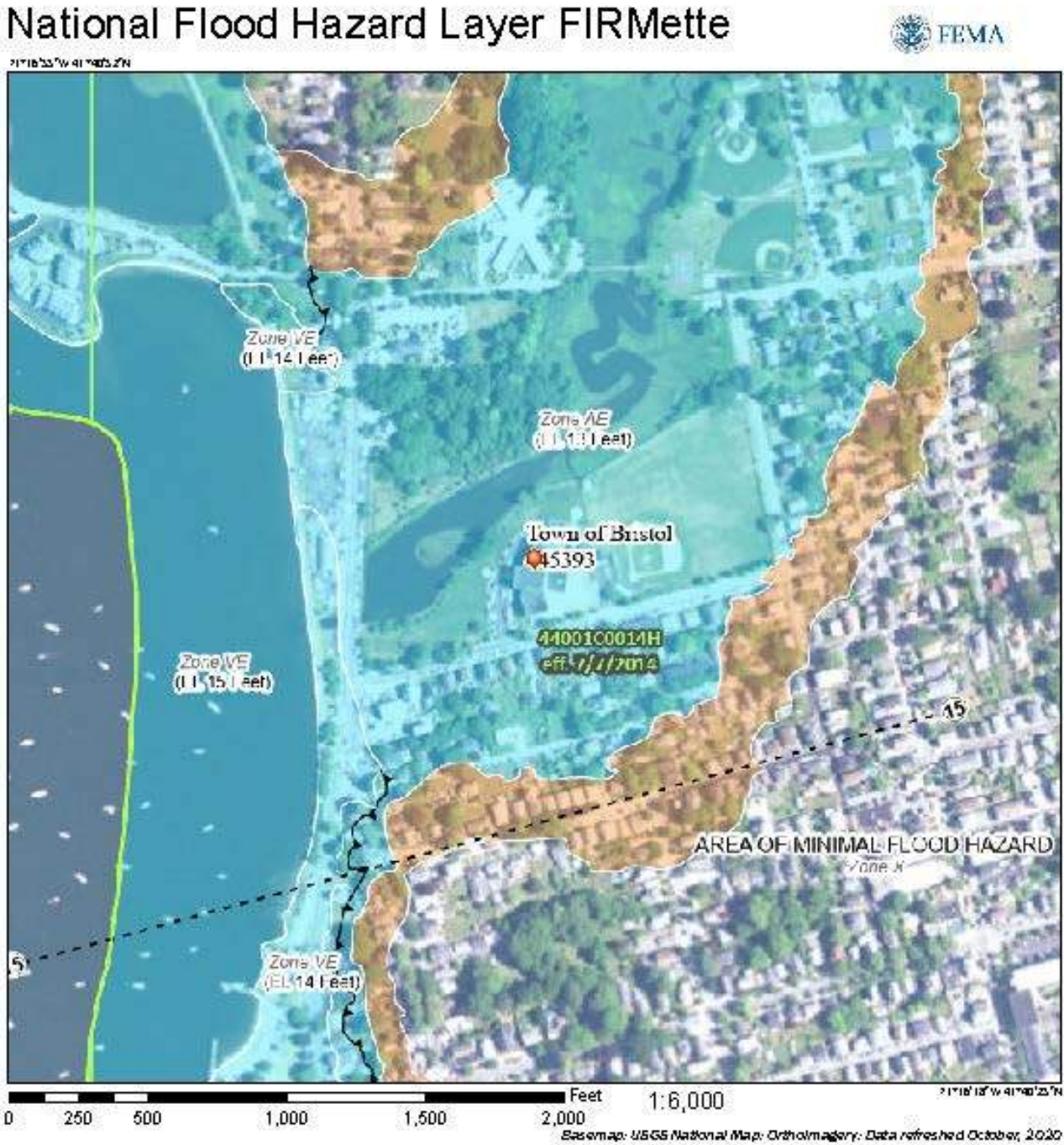
- On the Silver Creek
- Fronting Bristol Harbor
- Full size ball field
- Floods





# Guiteras School

- FEMA Flood Zone AE (13 ft.)



This map complies with FEMA's standards for the use of digital flood maps if it is as valid as described below. The basemap shown complies with FEMA's basemap accuracy standards.

The flood hazard information is derived directly from the authoritative NFHL web services provided by FEMA. This map was updated on 8/28/2025 at 12:04 PM and does not reflect changes or amendments subsequent to this date and time. The NFHL and effective information may change or become superseded by new data over time.

This map image is valid if the one or more of the following map elements do not appear: Basemap imagery, flood zone labels, legend, scale bar, map creation date, community identifiers, FIRM panel number, and FIRM effective date. Map images for unmapped and unmapped areas should be used for regulatory purposes.



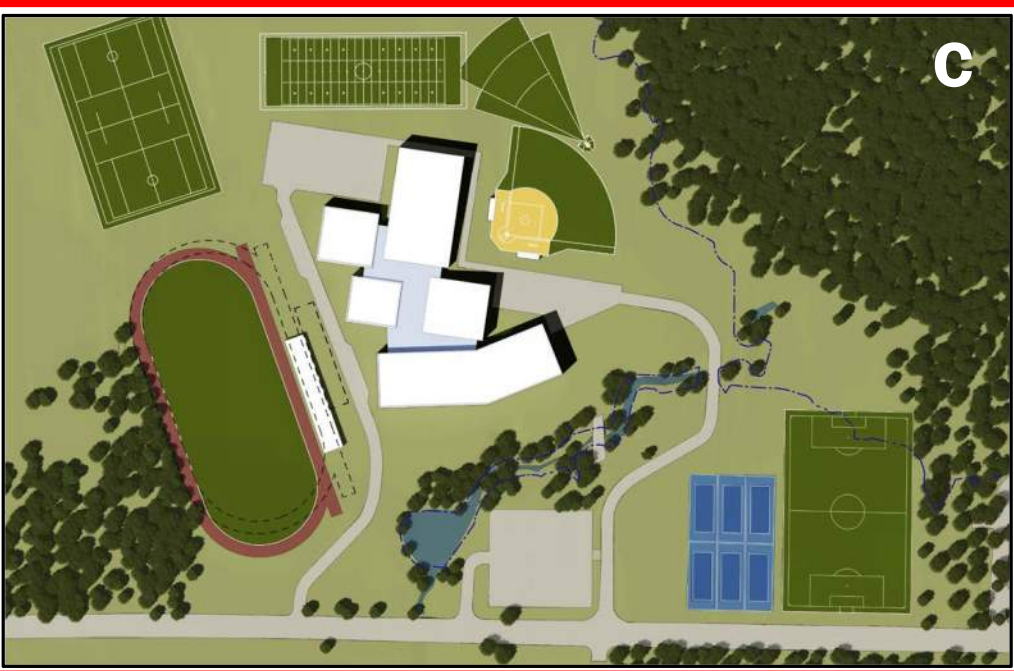


PMA Consultants

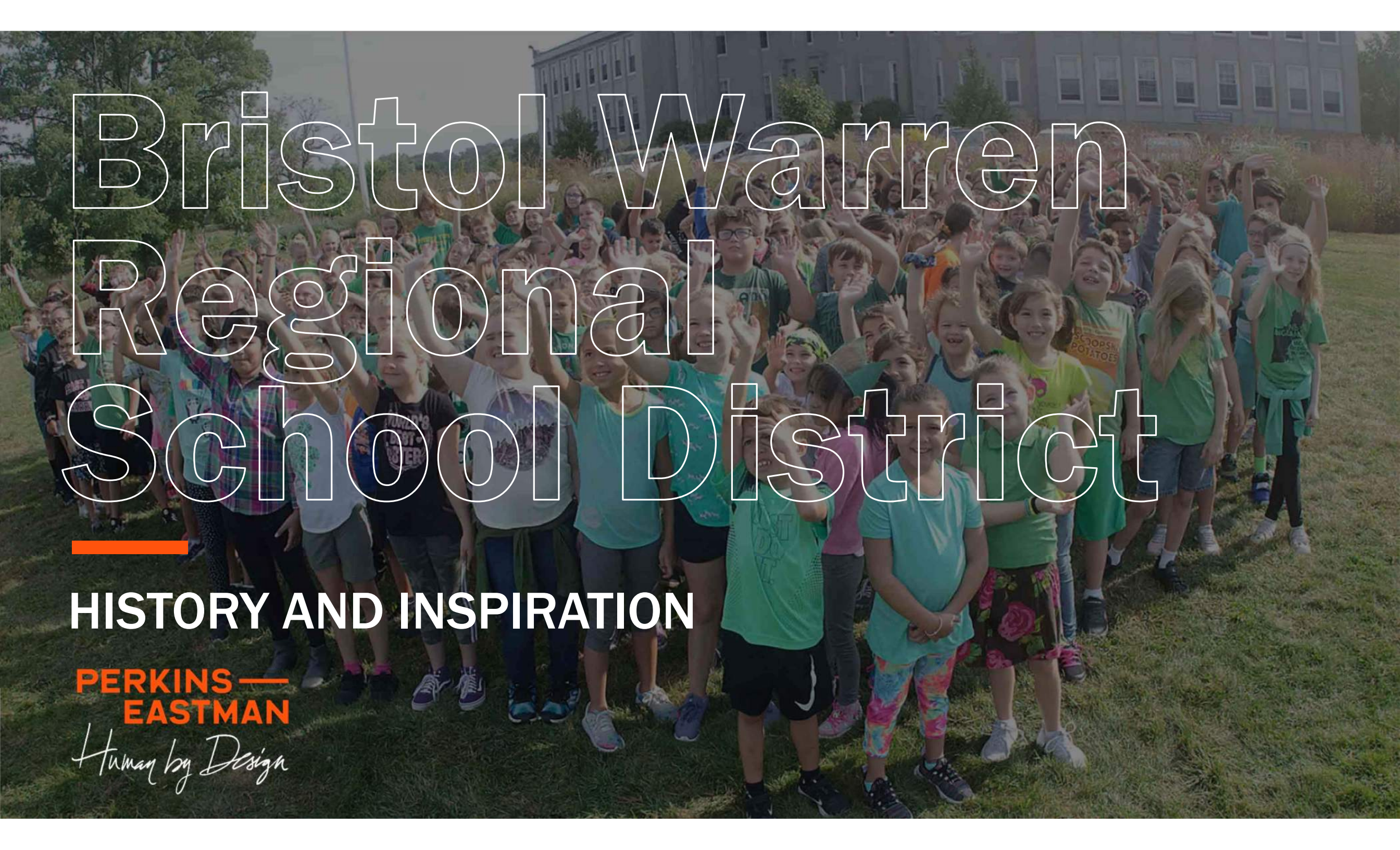
# PREFERRED SOLUTIONS

---

Review







# Bristol Warren Regional School District

---

**HISTORY AND INSPIRATION**

**PERKINS —  
EASTMAN**

*Human by Design*



History & Inspiration

---

An aerial photograph of a winding river or stream flowing through a dense, lush green forest. The water is a deep blue, contrasting with the vibrant green of the surrounding trees. The river meanders through the landscape, creating small islands and peninsulas covered in vegetation. The overall scene is serene and natural.

# Blue Ways + Green Ways



# Blueways

Rhode Island's landscape includes hundreds of freshwater lakes and ponds covering 20,749 acres. These waterbodies provide multiple recreational opportunities, important aquatic habitat, and a reliable source of drinking water supply for a majority of Rhode Island residents.

Glaciation has affected the whole state leaving rich outwashes, disarranged drainage on hardpan and a patchwork of swamps and ponds. About 70,000 acres of the State is classified as having hydric soils, boosting agriculture.

Rhode Island has already lost more than 50 percent of its original salt marsh habitats during the past two centuries due to human activity.





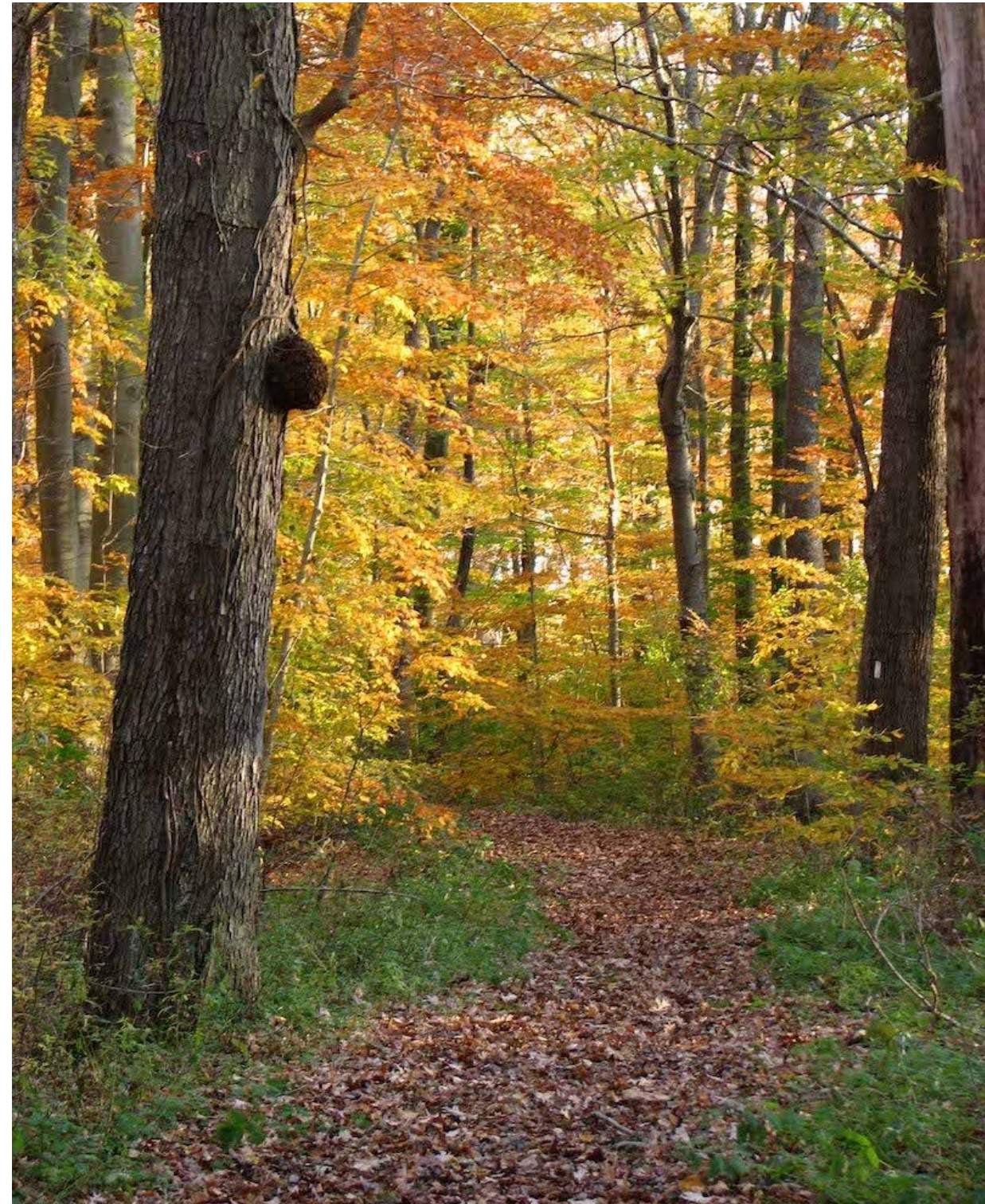
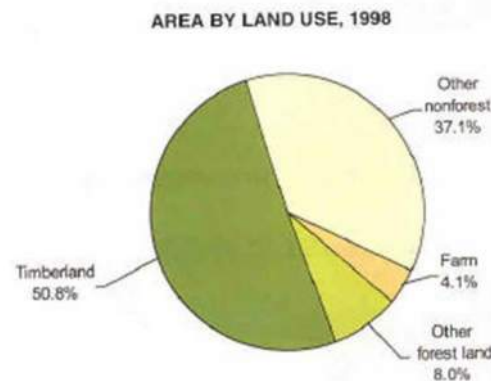
# Greenways

## FORESTS COVER 3 OUT OF 5 ACRES OF LAND

- 59% of the state is covered in forest

Since 1953, Rhode Island's population grew 28 percent to 1 million, yet it ranks ninth in the nation in percentage of forest cover. Few places on earth have as many people living among so much forest.

Due to economic pressures, Rhode Island's farms, forests, and open spaces are rapidly disappearing. The Farm, Forest, and Open Space Act helps citizens conserve these lands for themselves and for future generations.





# Audubon Center



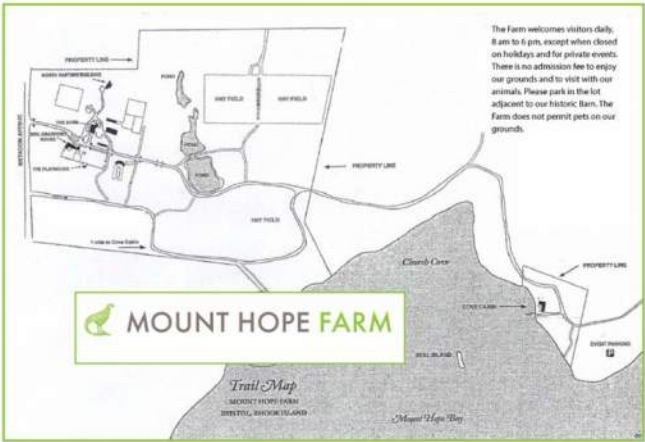


# Colt State Park





# Mount Hope Farm





# Mt Hope Farm





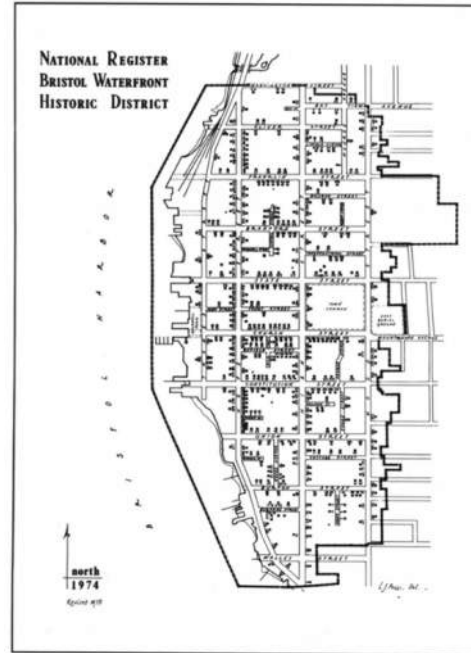
# Mt Hope Farm

BARN 1860S

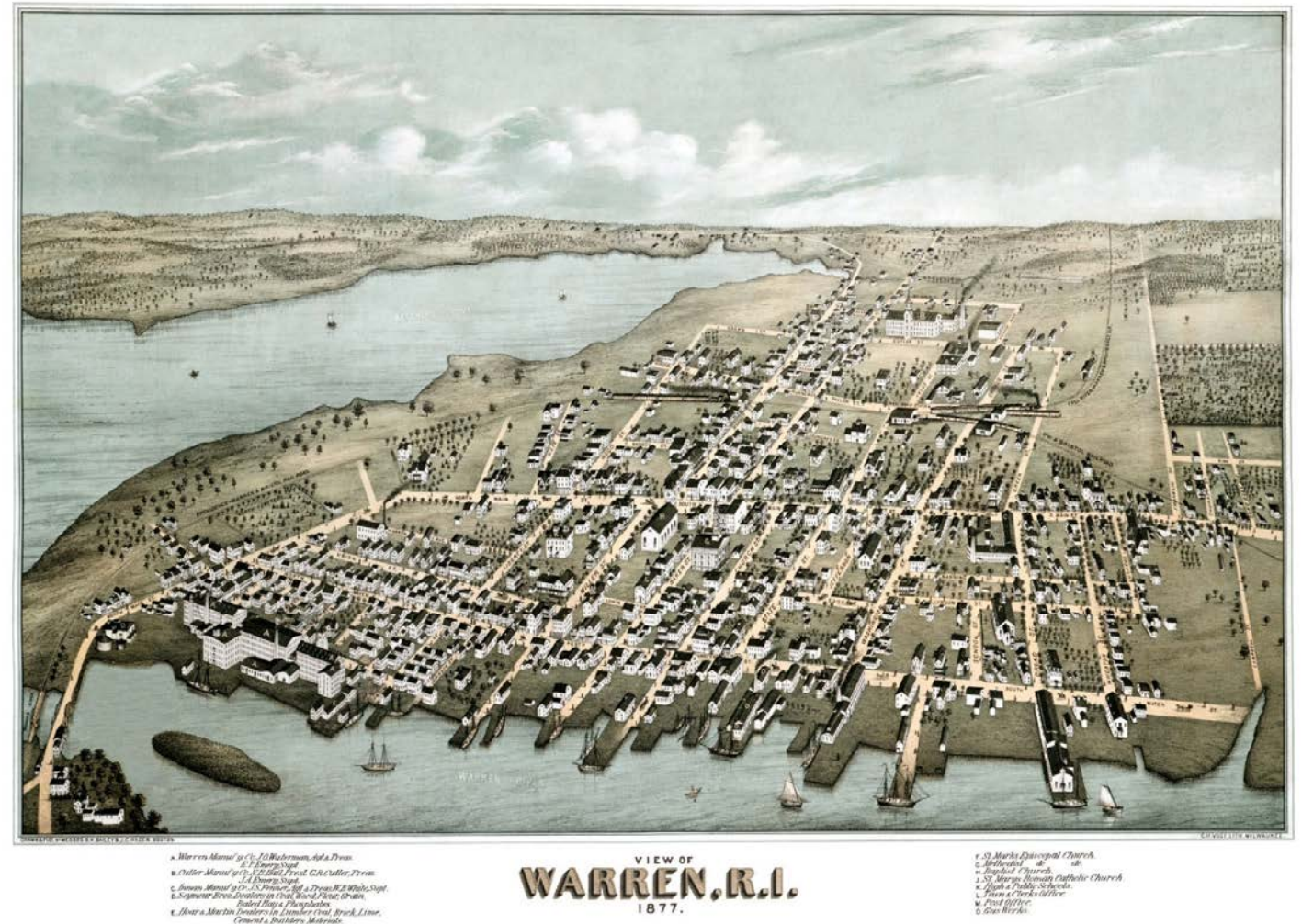




# Coast and Harbor



The presence of a well protected natural harbor made the Bristol peninsulas desirable real estate from the earliest years of settlement, when three English colonies disputed their ownership. In the eighteenth and nineteenth centuries Bristol and Warren's ships plied coastal and ocean lanes, and a densely developed, almost urban town grew up on the land above the harbor.



Bristol and Warren's history as a port town has left a substantial legacy of wharves, warehouses, and shops, of modest houses built for workers and sophisticated houses built by ship captains and owners, and of handsome public buildings and churches constructed with the wealth that trade produced.



# Waterfront Historic District





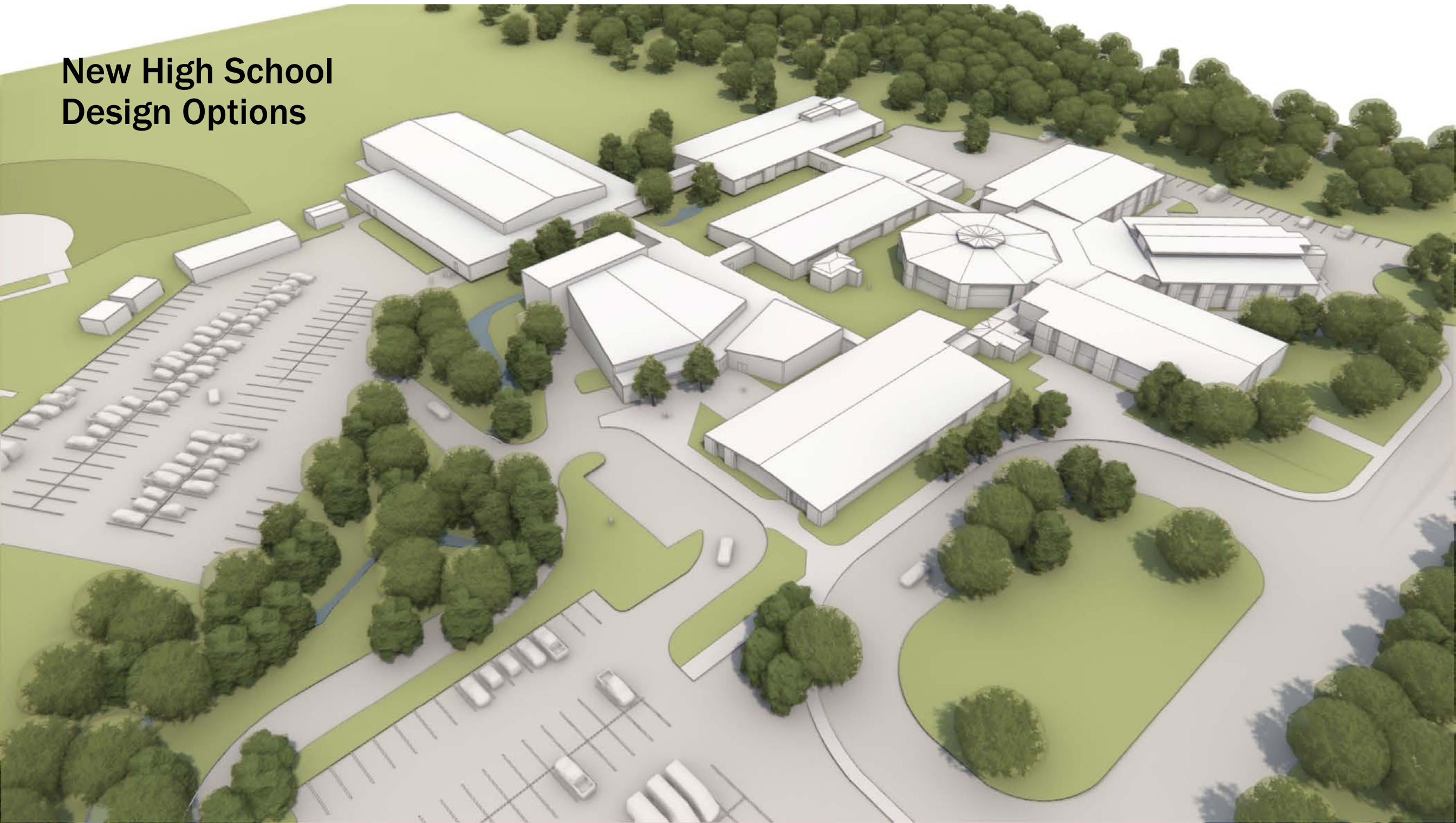
## Historic Warehouse Typology

---





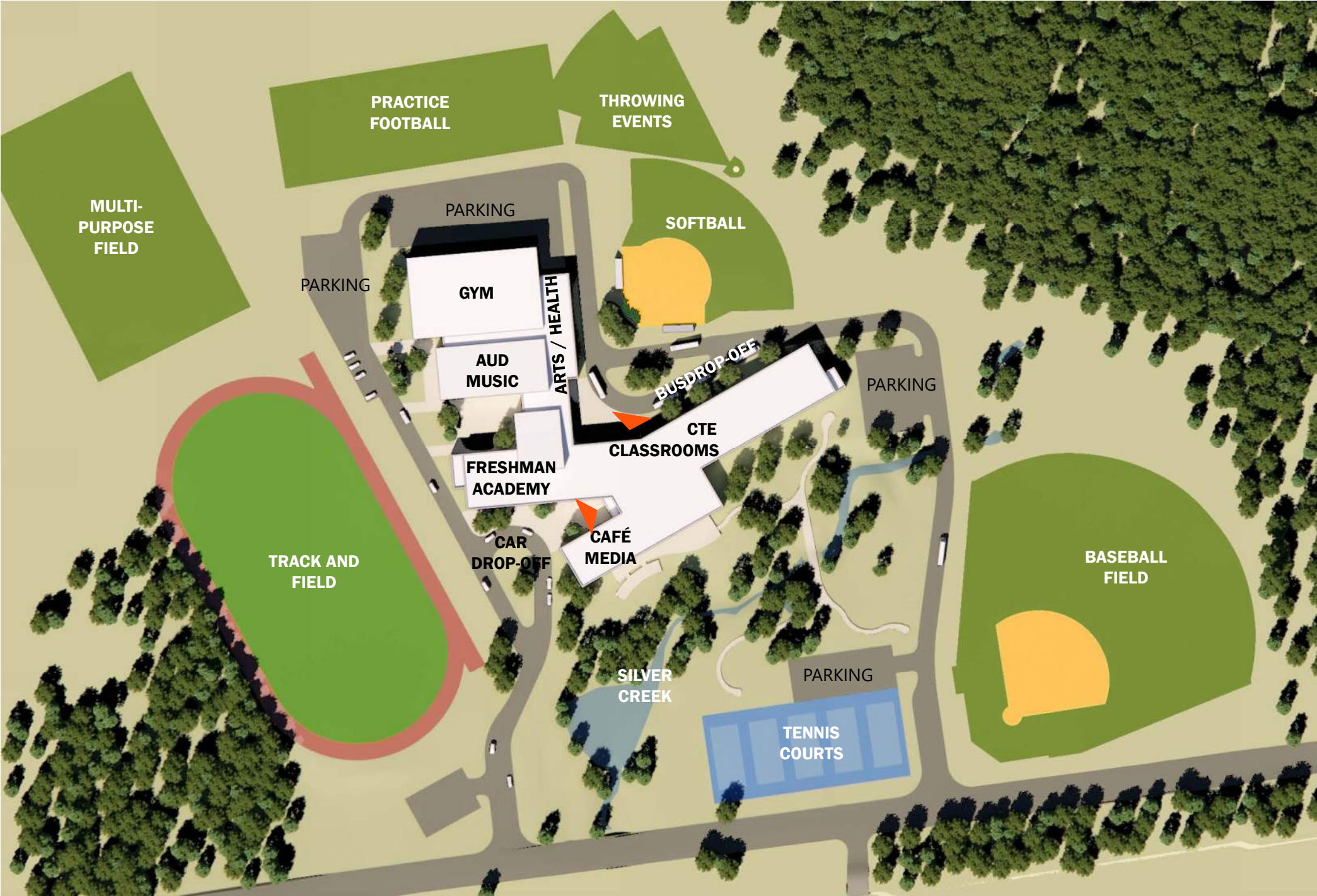
# New High School Design Options





# Option A

2 story





# Option A

2 story



# Option A

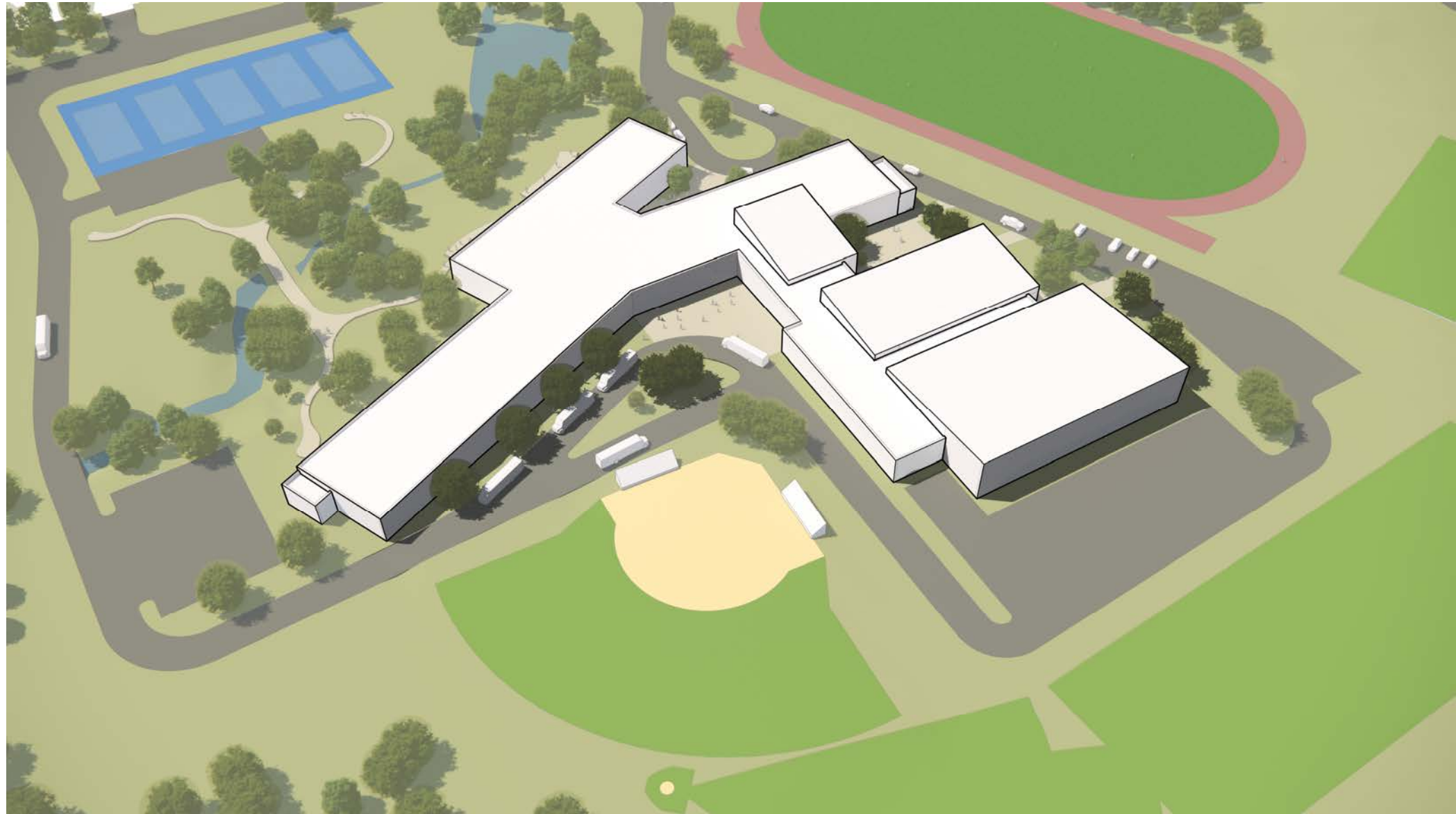
2 story





# Option A

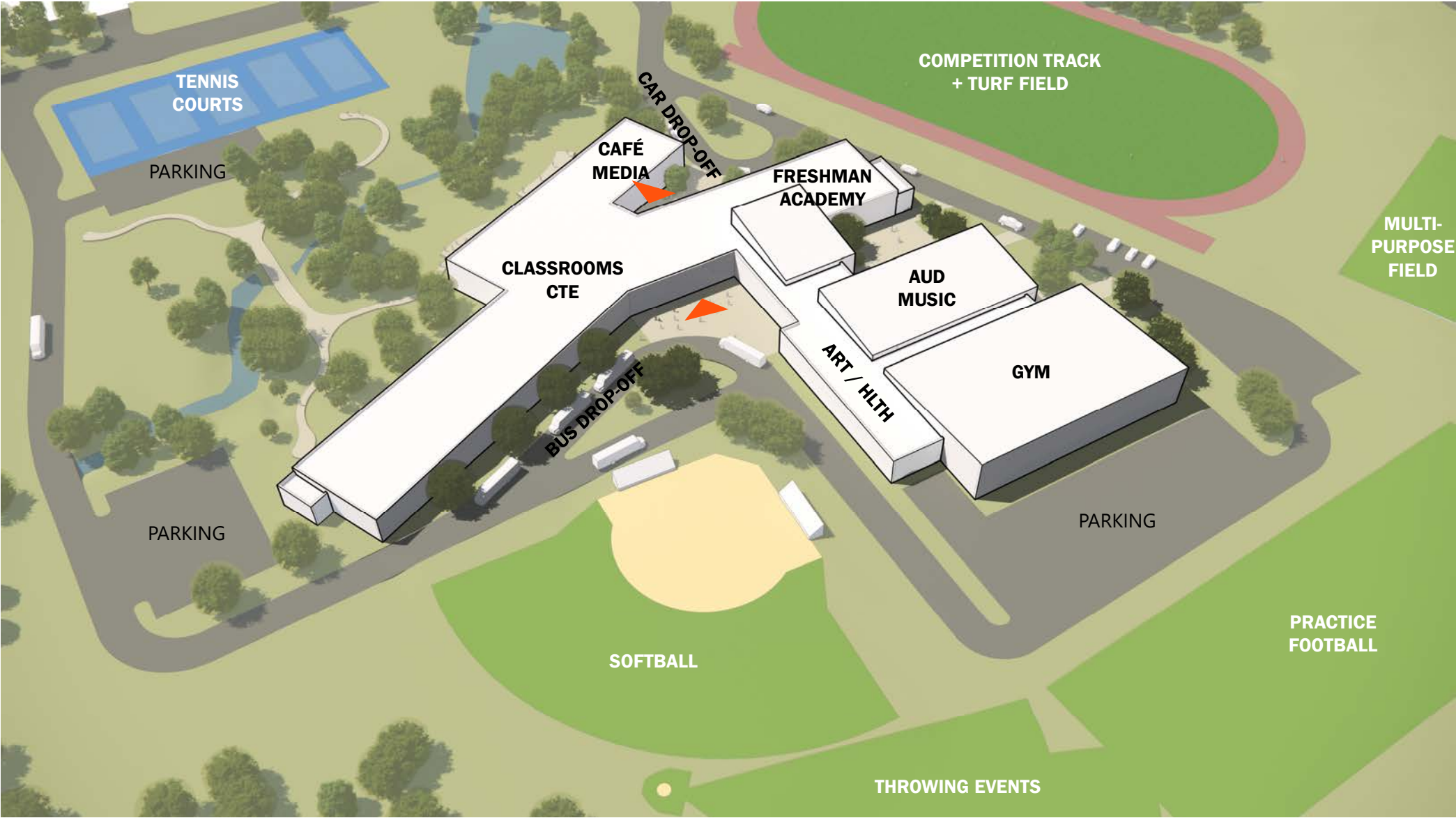
2 story





# Option A

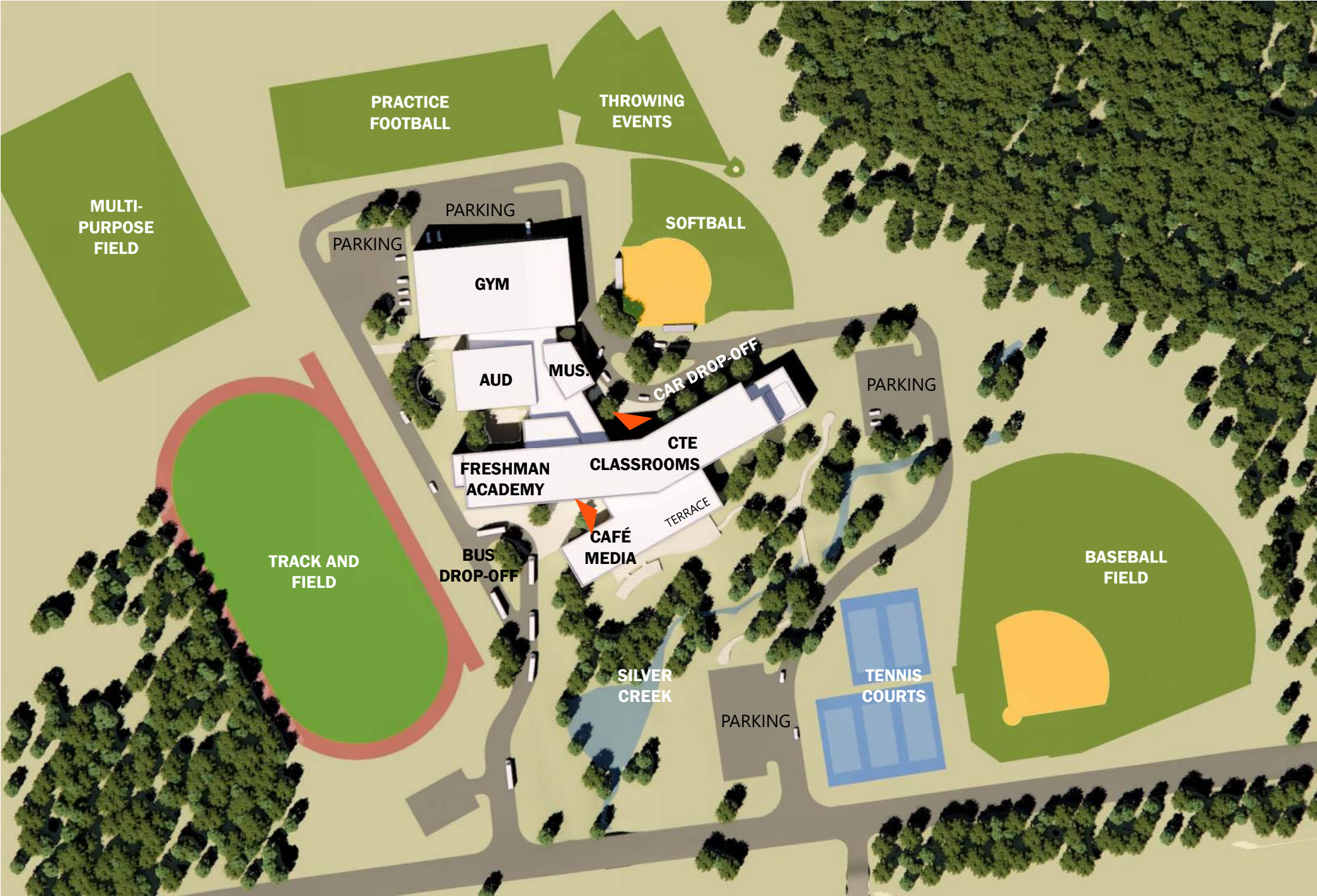
2 story





# Option B

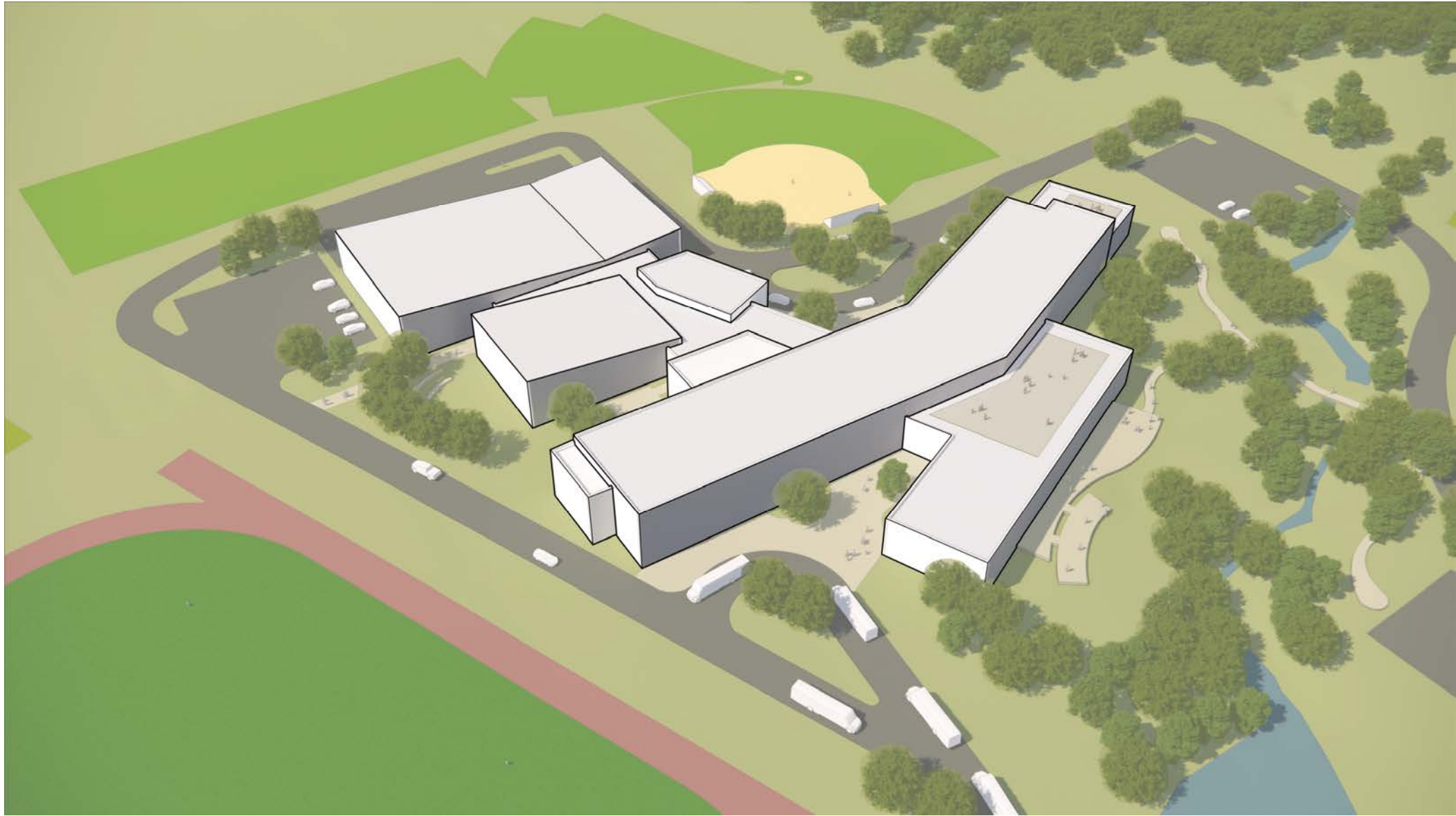
Partial 3 story





## Option B

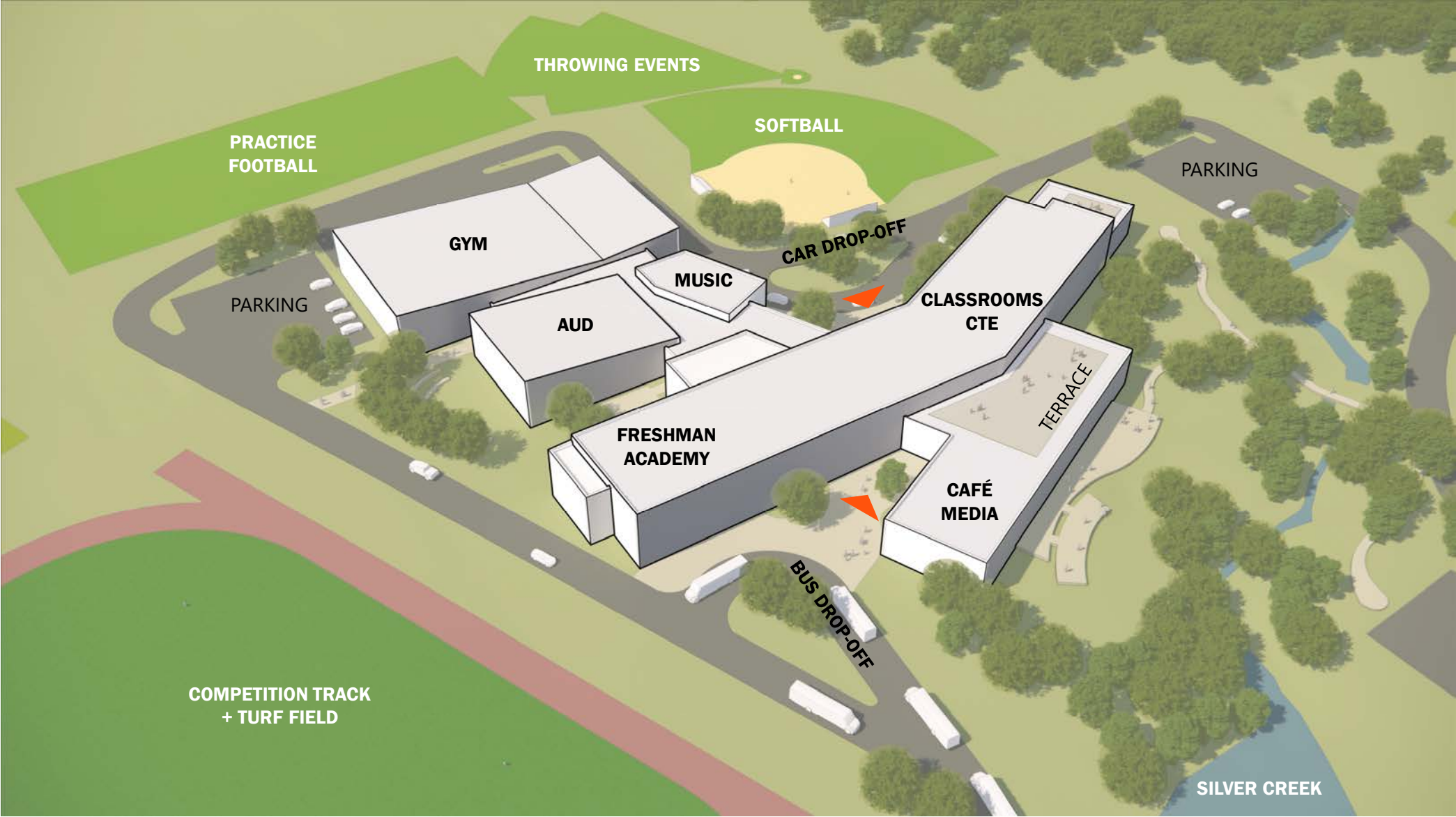
Partial 3 story





# Option B

Partial 3 story





## Option B

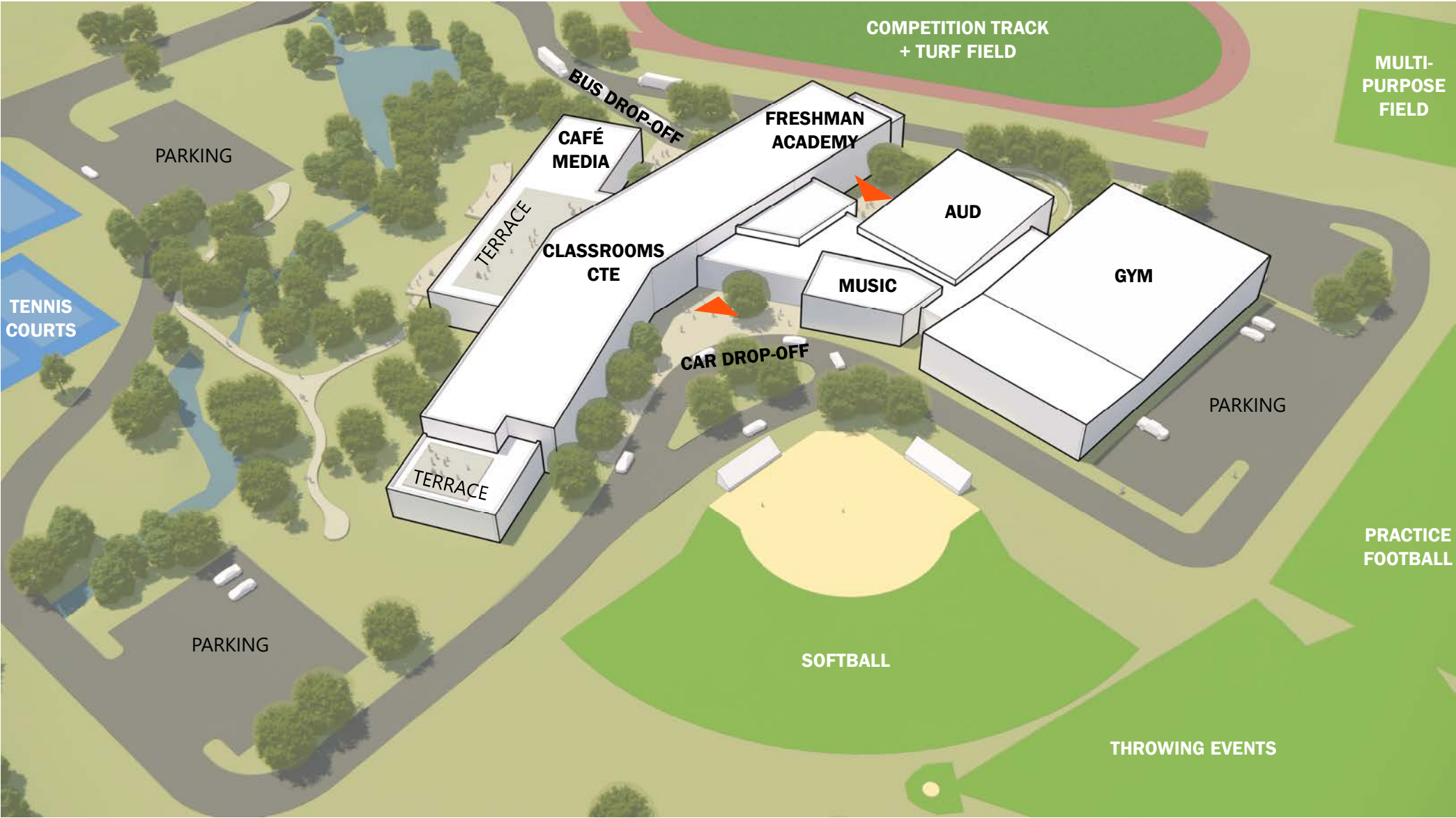
Partial 3 story





# Option B

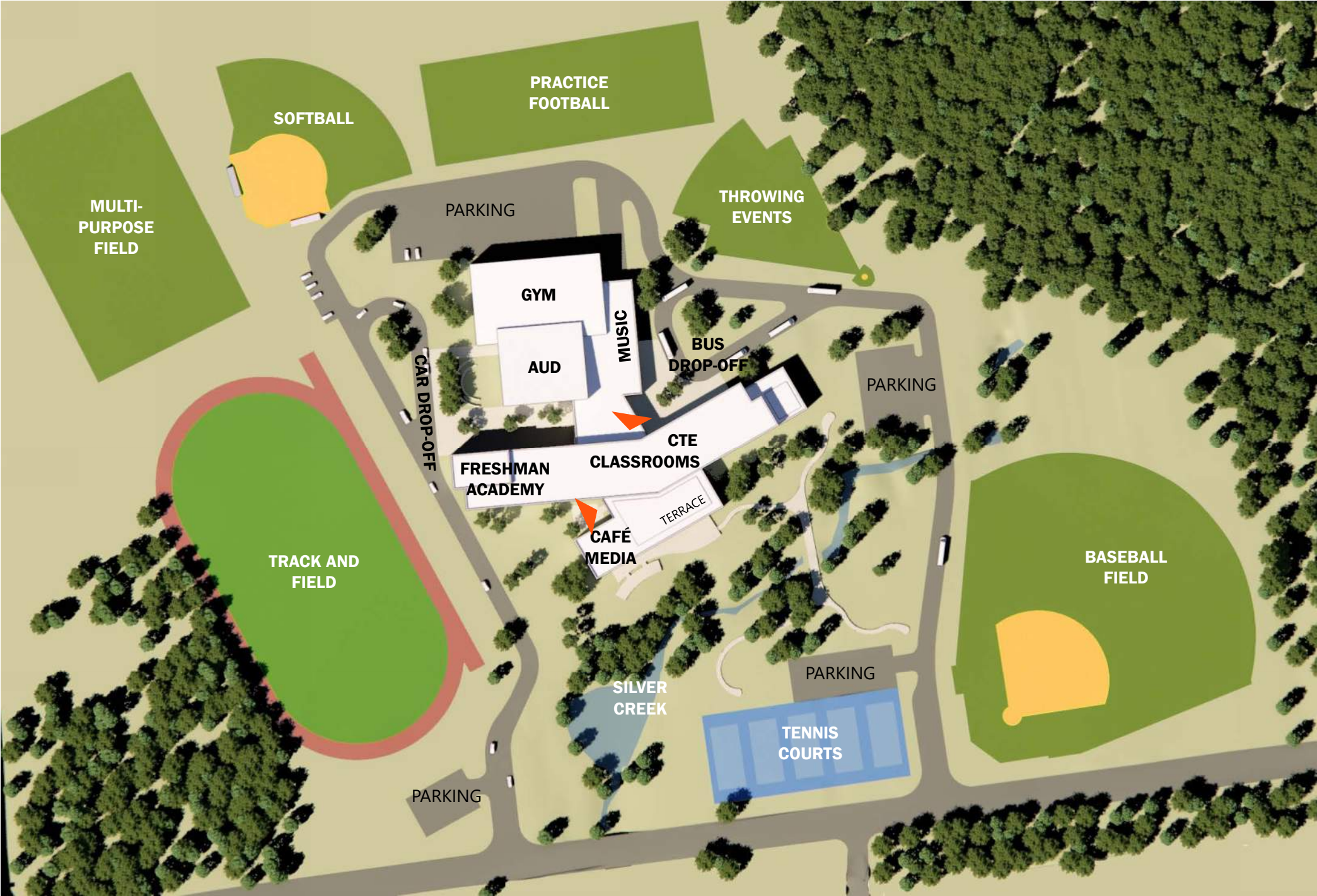
Partial 3 story





# Option C

Partial 3 story  
Increases Field Relocation

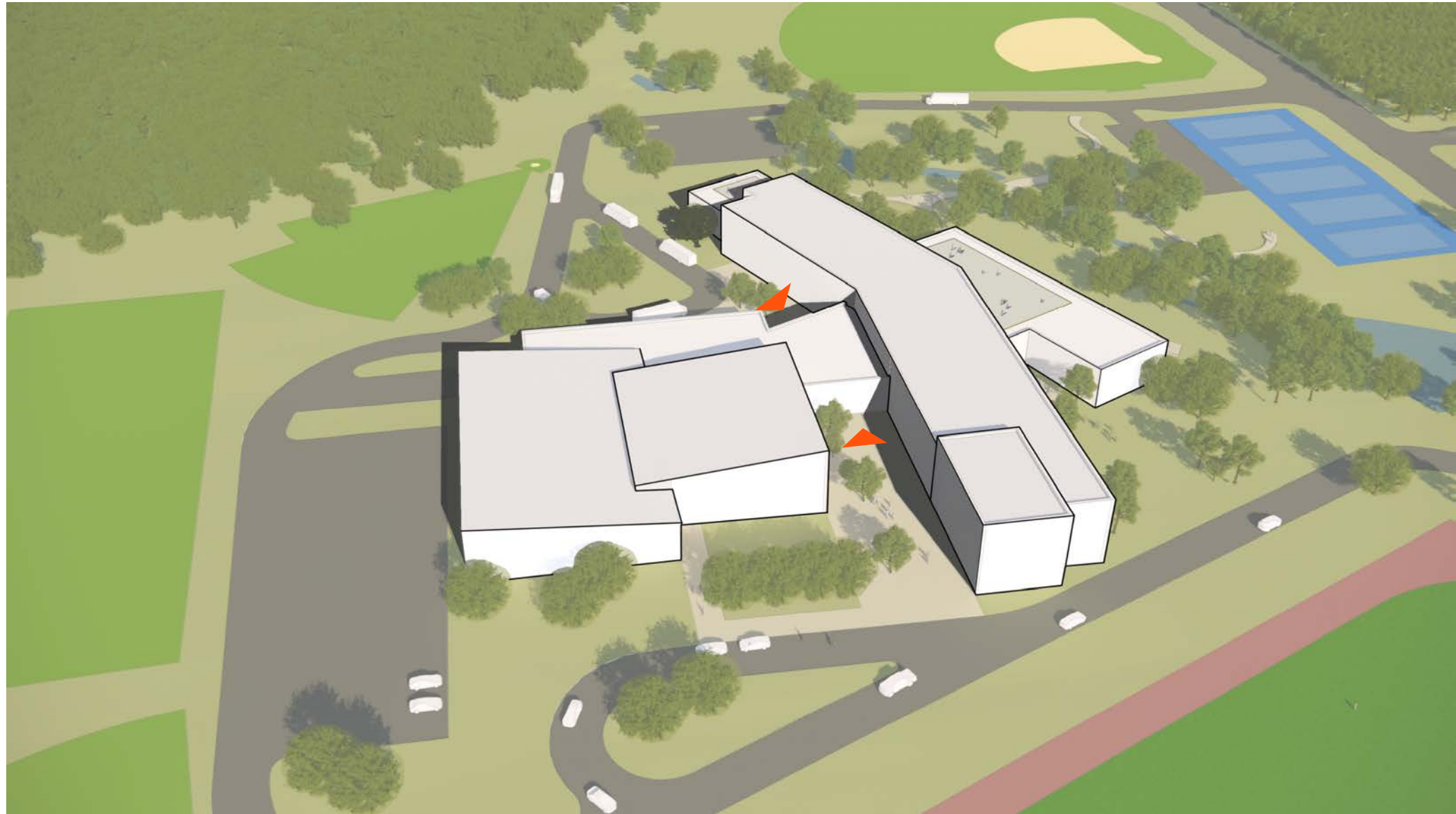




## Option C

Partial 3 story

Increases Field Relocation





# Option C

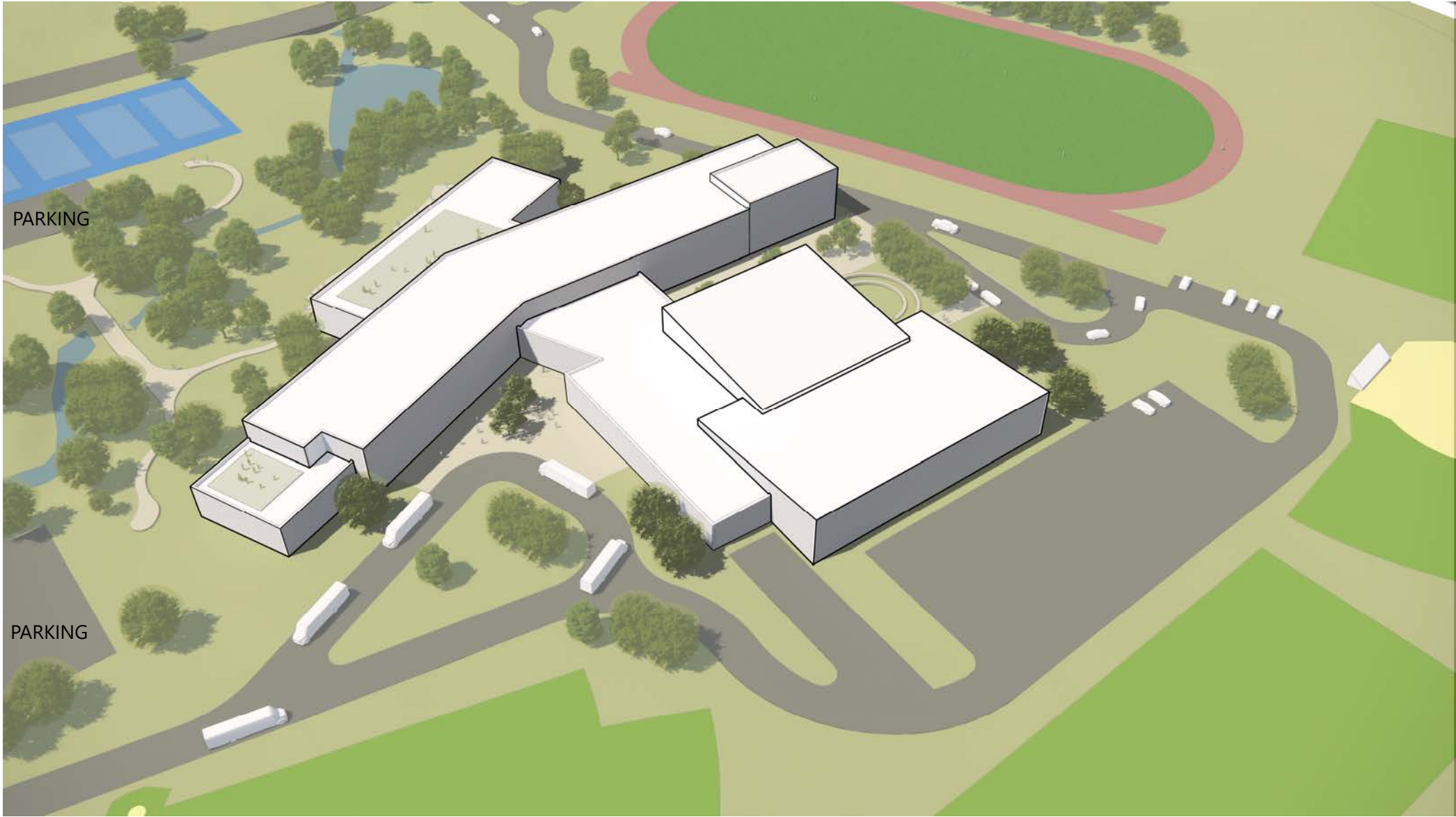
Partial 3 story  
Increases Field Relocation





# Option C

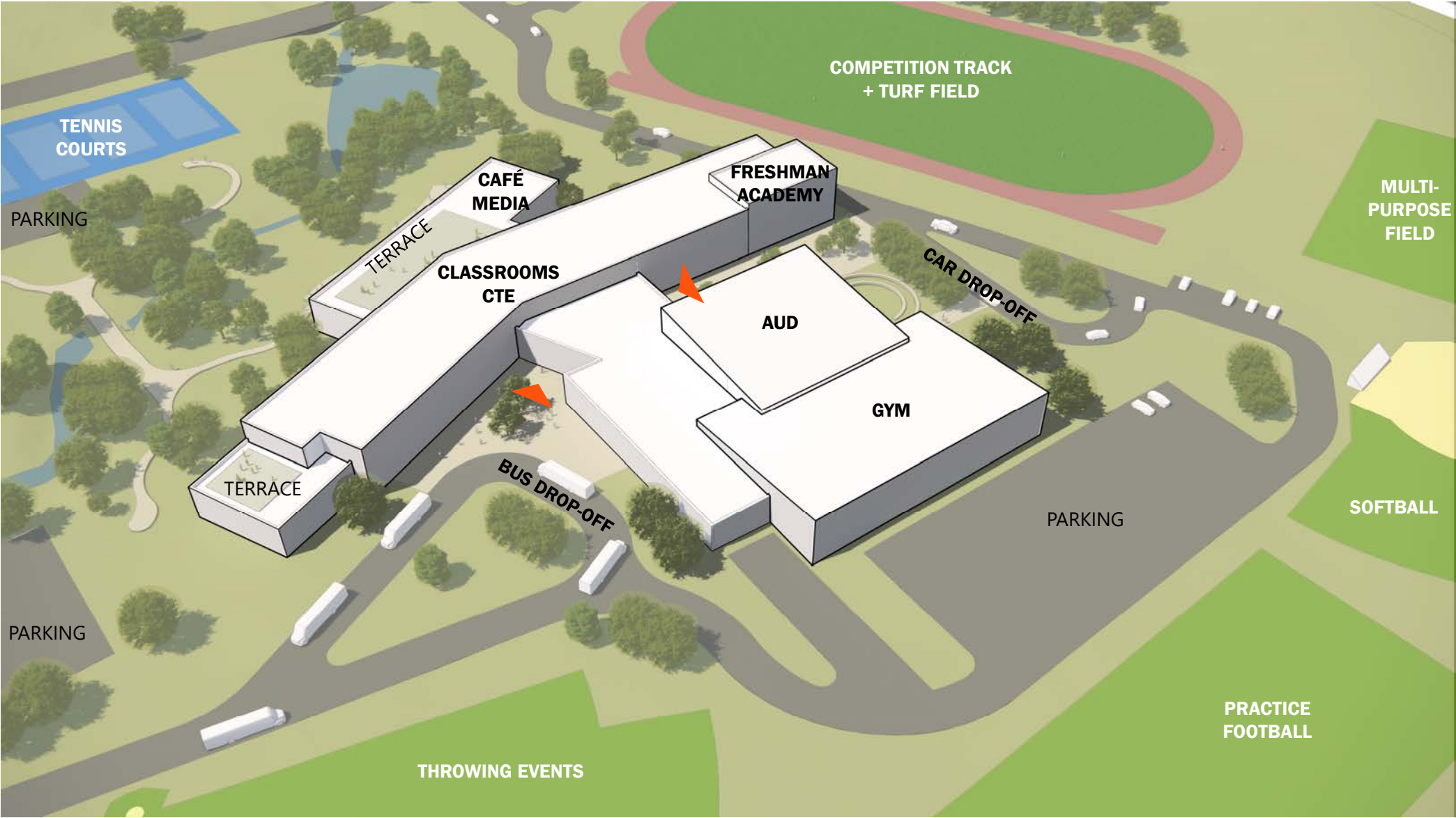
Partial 3 story  
Increases Field Relocation





# Option C

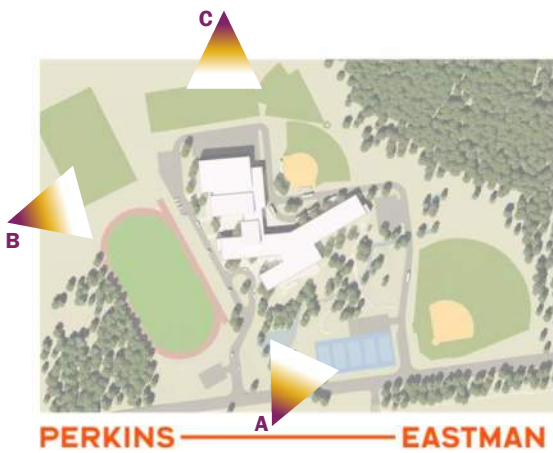
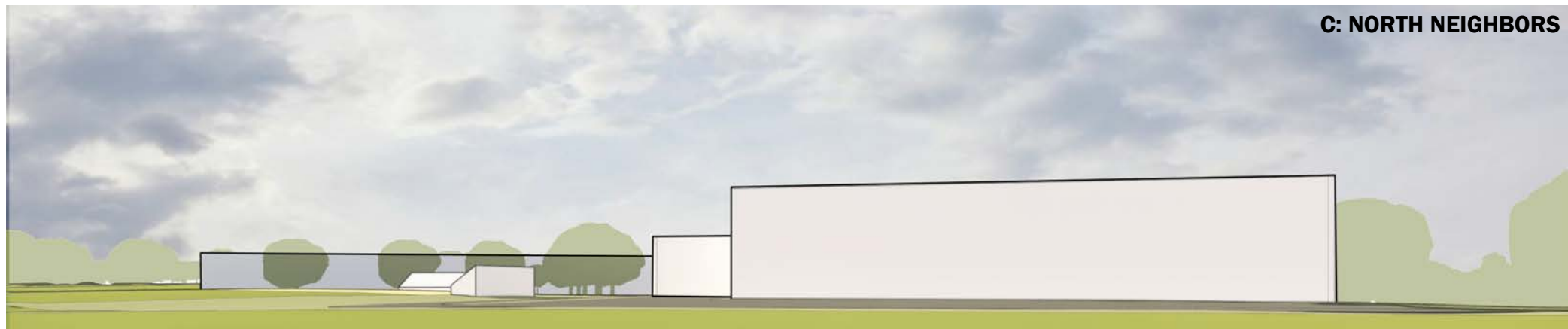
Partial 3 story  
Increases Field Relocation





# Neighbors

OPTION A | 2 STORY





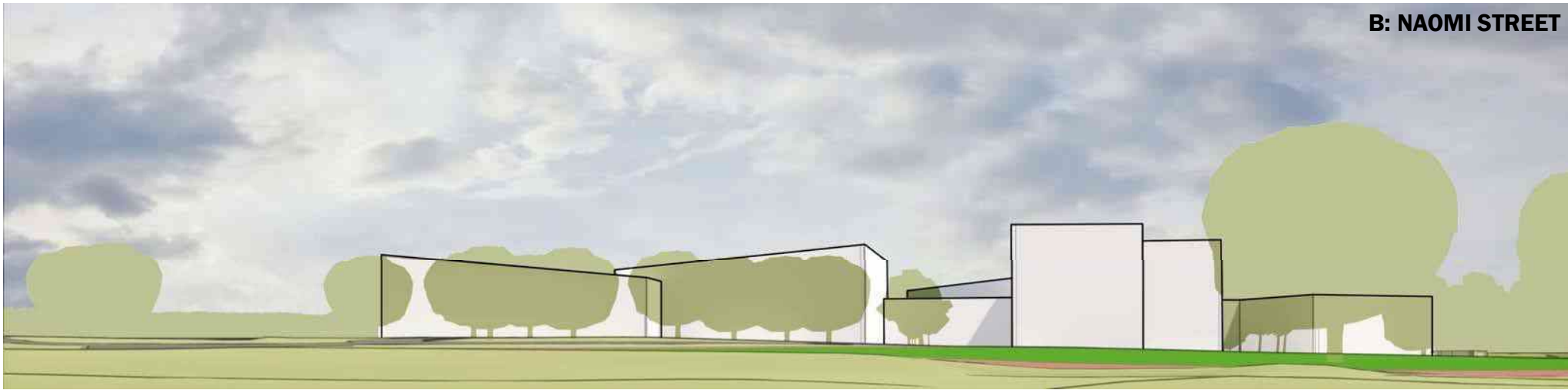
# Neighbors



OPTION B | PARTIAL 3 STORY



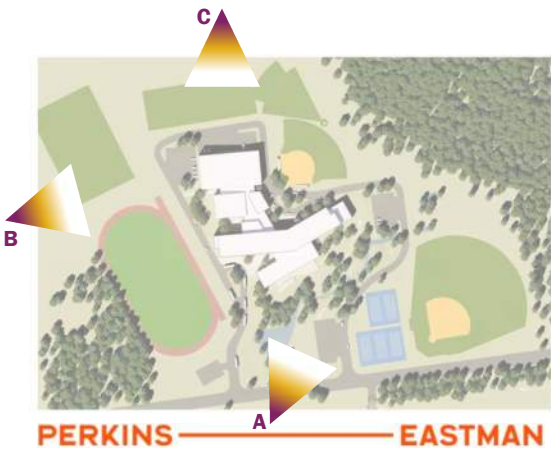
A: CHESNUT STREET



B: NAOMI STREET



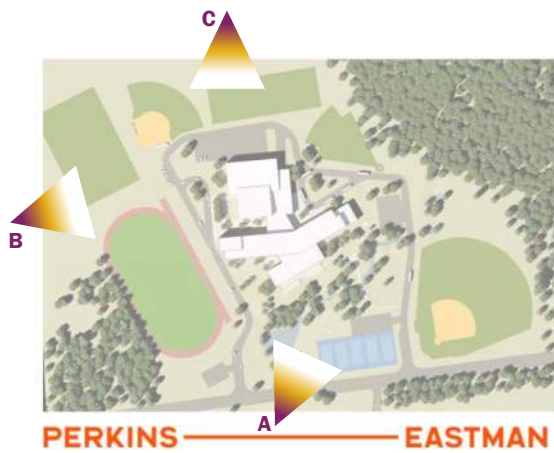
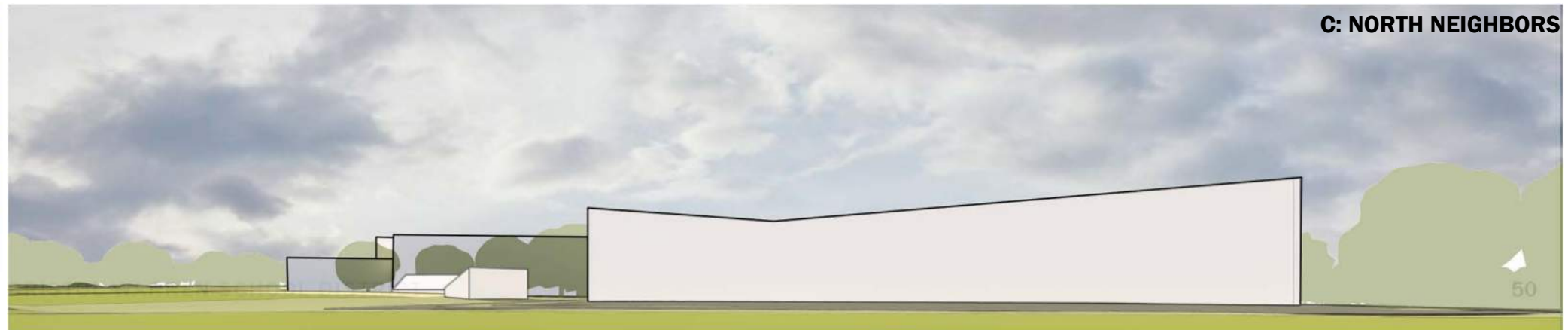
C: NORTH NEIGHBORS





# Neighbors

OPTION C | PARTIAL 3 STORY





# Field Layouts

OPTION A + B

## Temporarily Offline

6 Tennis Courts

1 Practice Field





# Field Layouts

OPTIONS A + B

## New Fields

5 Tennis Courts

1 Practice Field





# Field Layouts

OPTIONS A + B

## Future Fields

Competition Track

Turf Field

Baseball Field





# Field Layouts

OPTION C

## New Fields

Softball

Practice Football

Throwing Events

Practice Field

5 Tennis Courts





# Field Layouts

OPTION C

## Future Fields

Competition Track

Turf Field

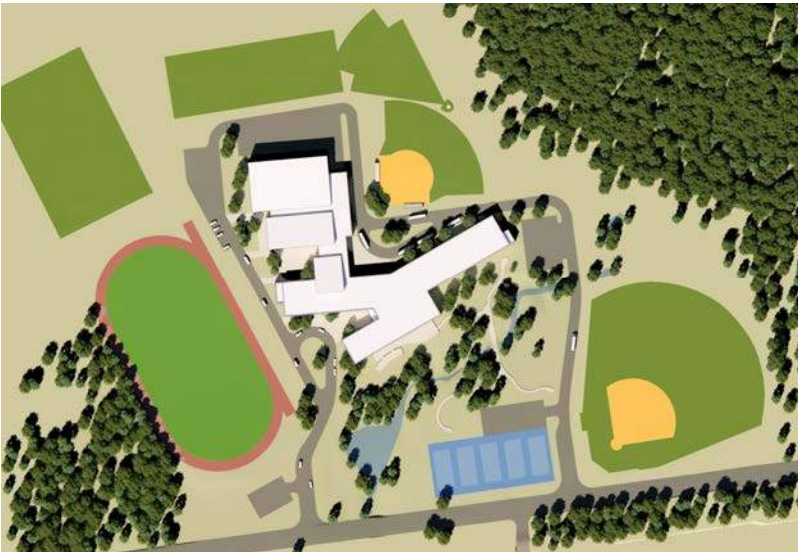
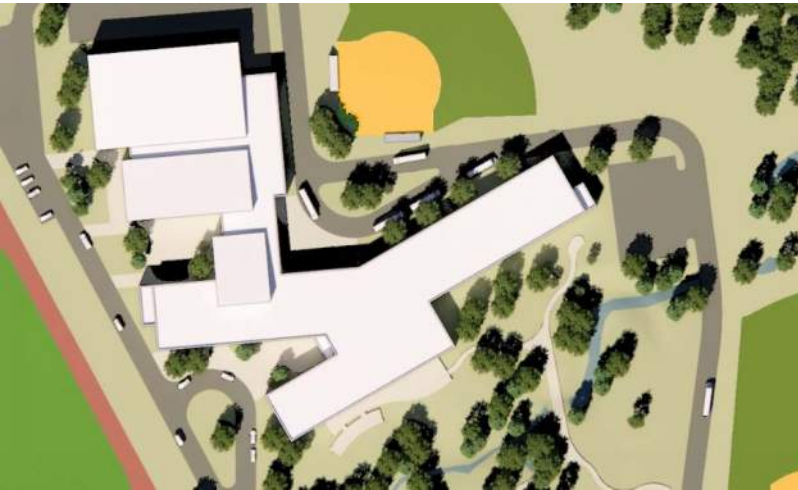
Baseball Field



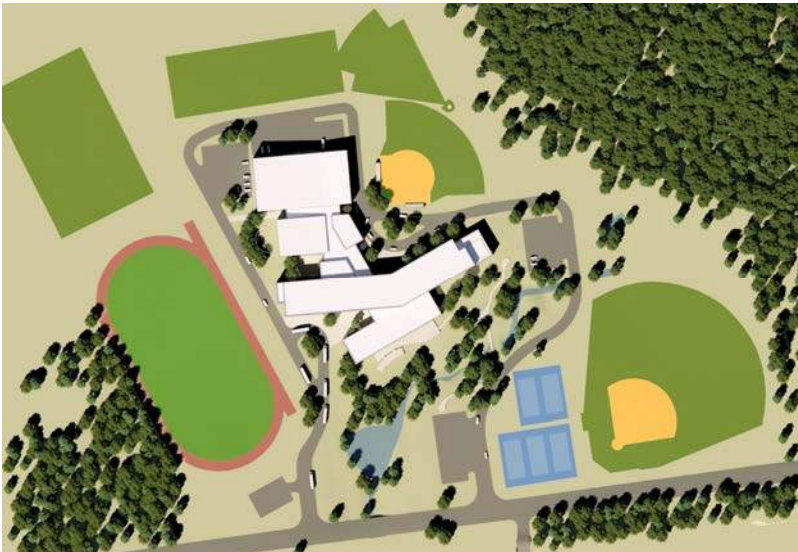
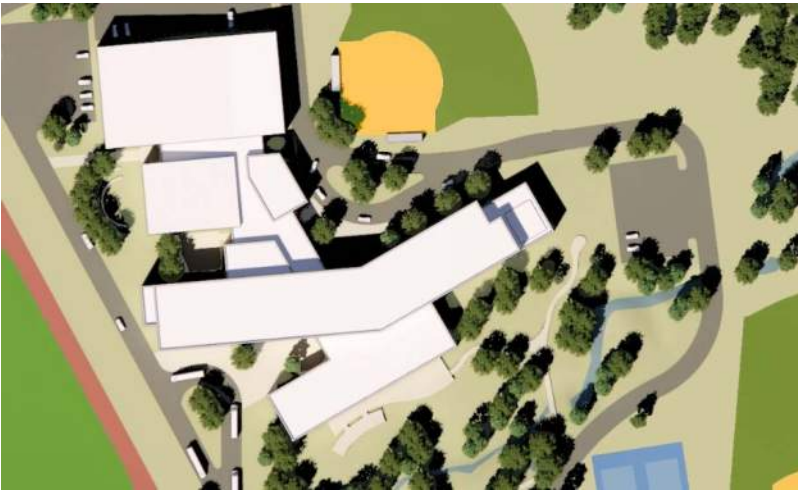


# Options

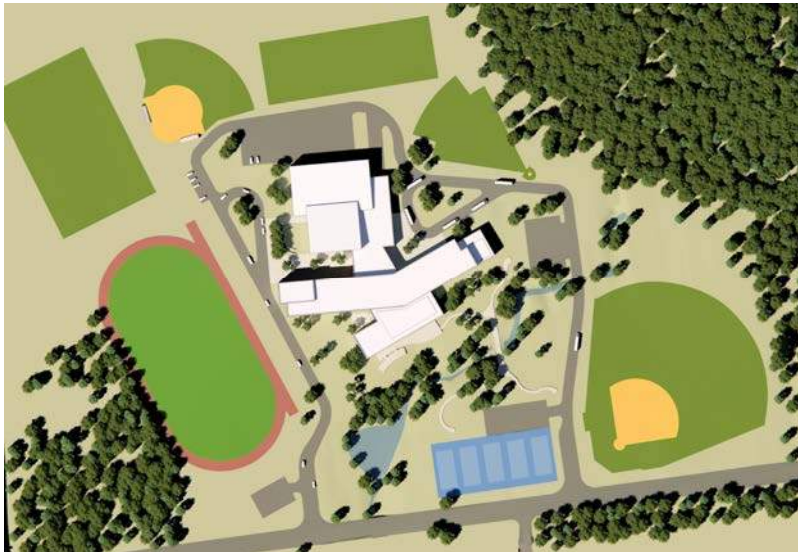
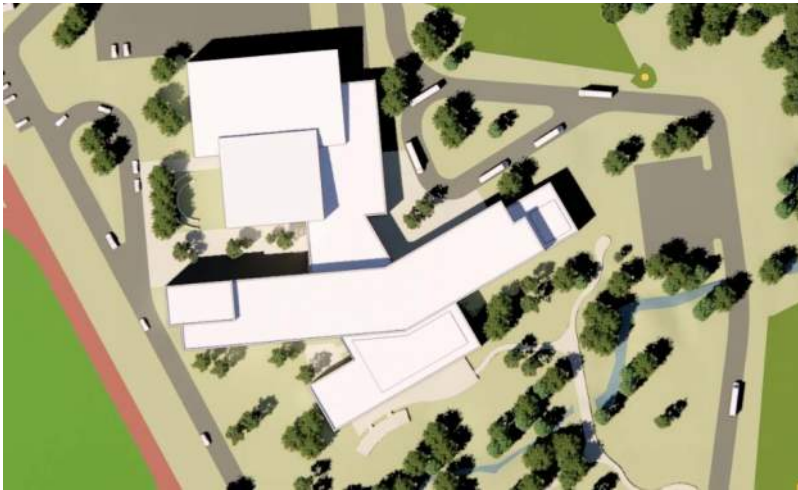
OPTION A



OPTION B



OPTION C





# Options

OPTION A



OPTION B



OPTION C







PMA Consultants

# COMMUNITY OUTREACH

---



# COMMUNITY OUTREACH

## BWRSD RIDE Necessity of Construction

- [BWRSD RIDE Necessity of Construction Stage I Submission](#)
- [BWRSD RIDE Necessity of Construction Stage II Process Overview](#)

## BWRSD Visioning Sessions

- [BWRSD High School Visioning Session](#)
- [BWRSD Middle School Visioning Session](#)
- BWRSD Elementary Schools Visioning Session - Coming Soon!

## Frequently Asked Questions

- [FAQ: BWRSD RIDE Necessity of Construction Stage II](#)

## BWRSD Capital Projects Updates

- [BWRSD Capital Projects Update 6.12.23](#)

## BWRSD School Building Committee

### 6-29-23 BWRSD Building Committee Meeting

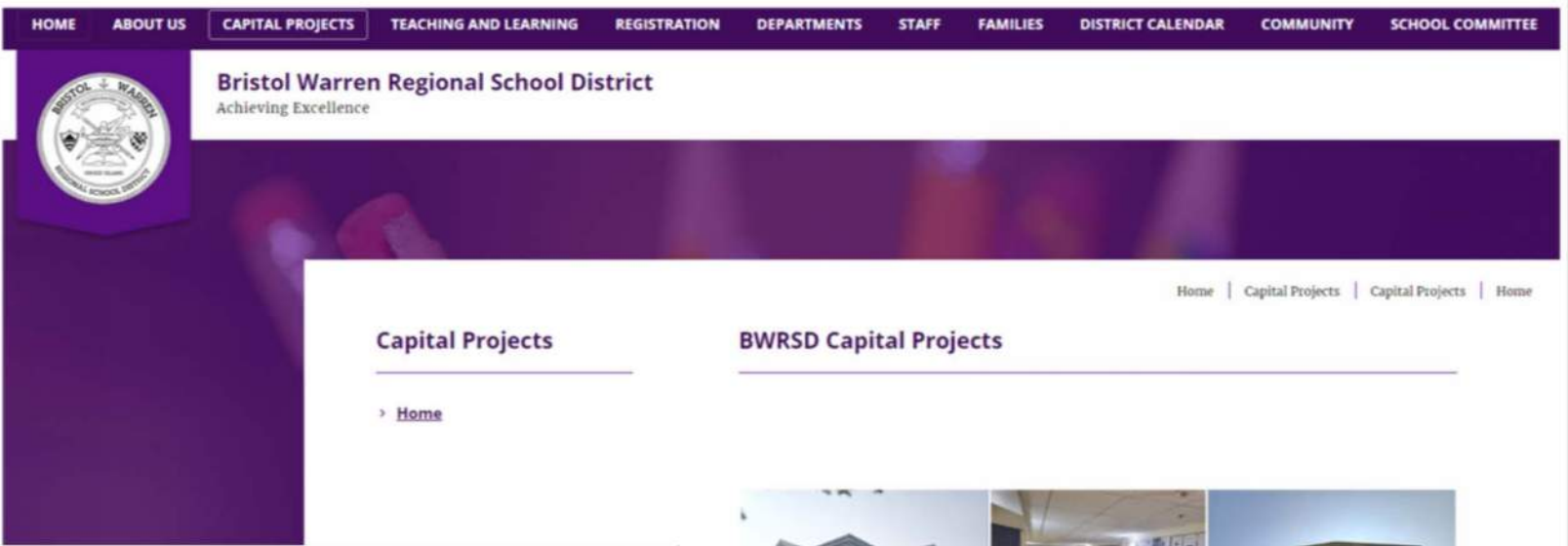
- [Agenda](#)

### 6-15-23 BWRSD School Building Committee Meeting

- [Agenda](#)
- [Presentation](#)

### 5-31-23 BWRSD School Building Committee Meeting

- [Agenda](#)
- [Presentation](#)



- ✓ WEBSITE UPDATES
- ✓ FAQs
- ✓ CONCERT SERIES





PMA Consultants

# NEXT STEPS

---

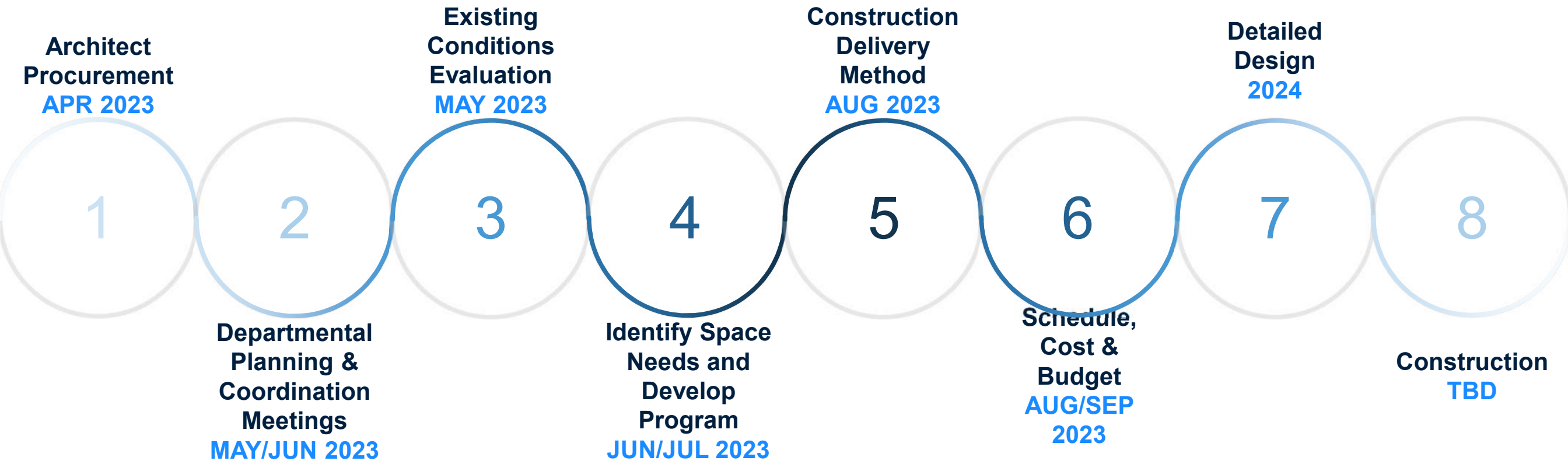


# KEY DATES / NEXT STEPS

Key Dates	15Sep23	- RIDE Stage II Submission Deadline
	18Sep23	- Board of Elections Approval of Referendum Question(s)
	07Nov23	- Project Funding Authorization Vote
	19Dec23	- RIDE Stage II Approval Target
	30Dec23	- Construction Manager Award
<hr/>		
Upcoming Meetings	18 July 23	Conservation – Meetings with RIDEM on July 18th
	1Aug 23	Integrated Design Meetings (Systems)– August 1st or 2nd
	7 Aug 23	Integrated Design Meetings (NE CHPS)– August 7th or 8th
	20Jul 23	Subconsultant Site Visits: Second Round
	03Aug23	RIDE Stage II Check-in #2



# TIMELINE





**PMA Consultants**

**PERKINS —  
EASTMAN**



**QUESTIONS? | THANK YOU!**