



Bristol Warren Regional School District RIDE Necessity of School Construction

STAGE II PROGRESS UPDATE

- 15Sep23 - RIDE Stage II Submission
- 17Sep23 - Bristol Porchfest
- 21Sep23 - School Building Committee
- 21Sep23 - AE/OPM Coordination Meeting: Weekly
- 23Sep23 - East Bay Running Festival (Outreach)
- 26Sep23 - Social Media Strategy Meeting
- 27Sep23 - School Committee Meeting
- 28Sep23 - AE/OPM Coordination Meeting: Weekly
- 29Sep23 - Cashflow Development Meeting With RIDE
- 02Oct23 - Community Forum & MHHS Tours
- 05Oct23 - School Building Committee
- 05Oct23 - AE/OPM Coordination Meeting: Weekly
- 08Oct23 - Warren Walkabout
- 11Oct23 - School Committee
- 11Oct23 - Abutters Meeting
- 14Oct23 - Harvest Festival
- 15Oct23 - Warren Walkabout
- 19Oct23 - School Building Committee

-
- 19Oct23 - TRC Meeting to Review Colt Andrews
 - 19Oct23 - AE/OPM Coordination Meeting: Weekly
 - 26Oct23 - AE/OPM Coordination Meeting: Weekly
 - 29Oct23 - Halloween Walkabout
 - 01Nov23 - Community Forum
 - 02Nov23 - School Building Committee

Since Last SBC Meeting

-
- 02Nov23 - AE/OPM Coordination Meeting: Weekly
 - 07Nov23 - Referendum Vote
 - 14Nov23 - Stage II Responses Due Back to RIDE

Upcoming

DESIGN



PMA Consultants

PERKINS —
EASTMAN

ROCKWELL ELEMENTARY SCHOOL

ROCKWELL
ELEMENTARY
SCHOOL

RENOVATED PRE-K CLASSROOM
WITH DEDICATED PLAY SPACE

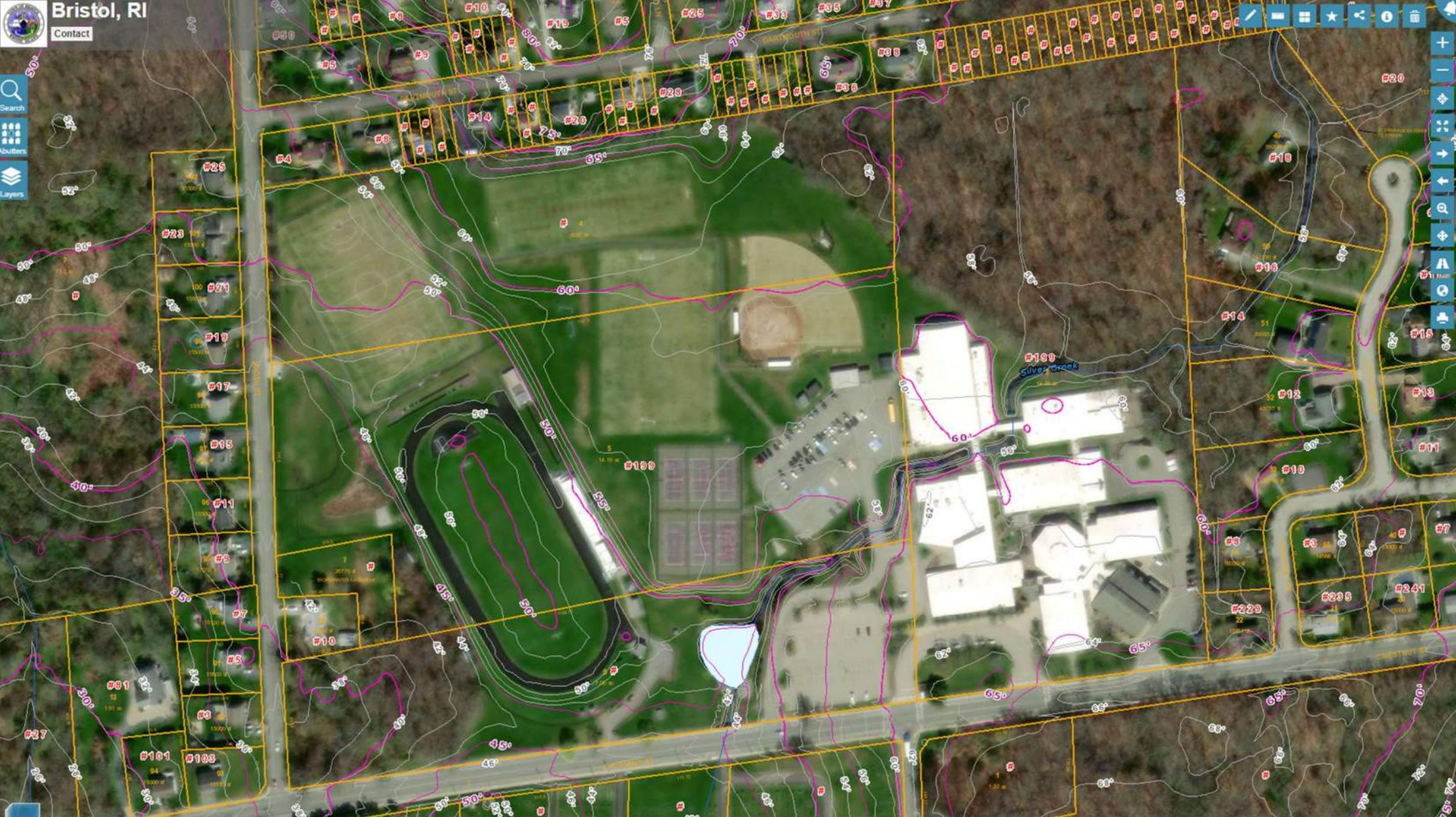




Search

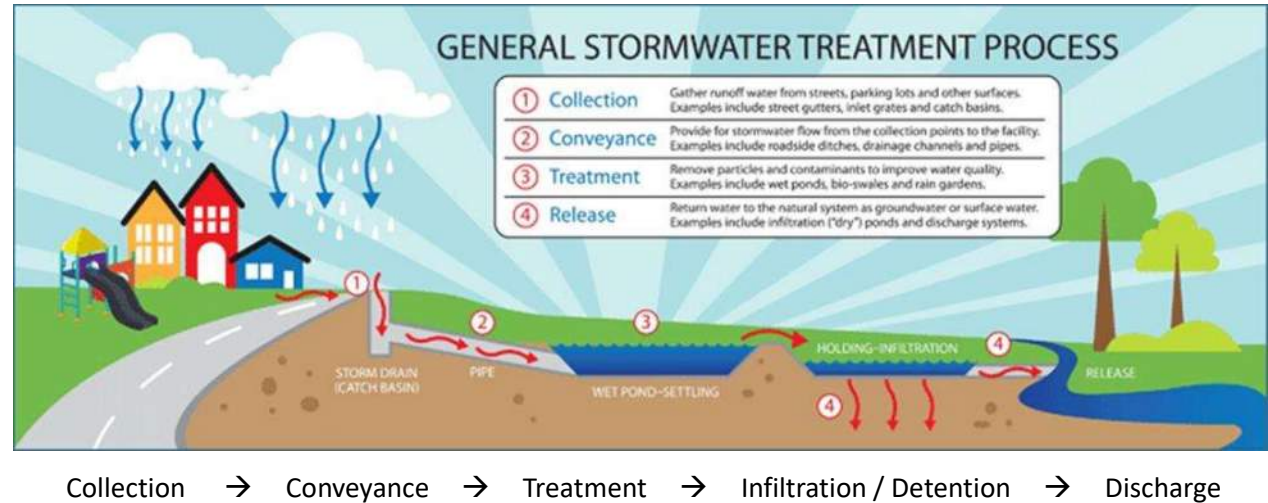


Layers



Stormwater Management System Process

- Collect and transport stormwater (a.k.a. rainwater)
- Provide stormwater treatment with the settling and removal of sediments
- Infiltrate stormwater to allow stormwater to seep into the ground
- Detain stormwater in basins to hold it onsite during major rain events
- Discharge any remaining stormwater at a slow and controlled rate



Photos of Example Stormwater Management Systems



Bioretention Area



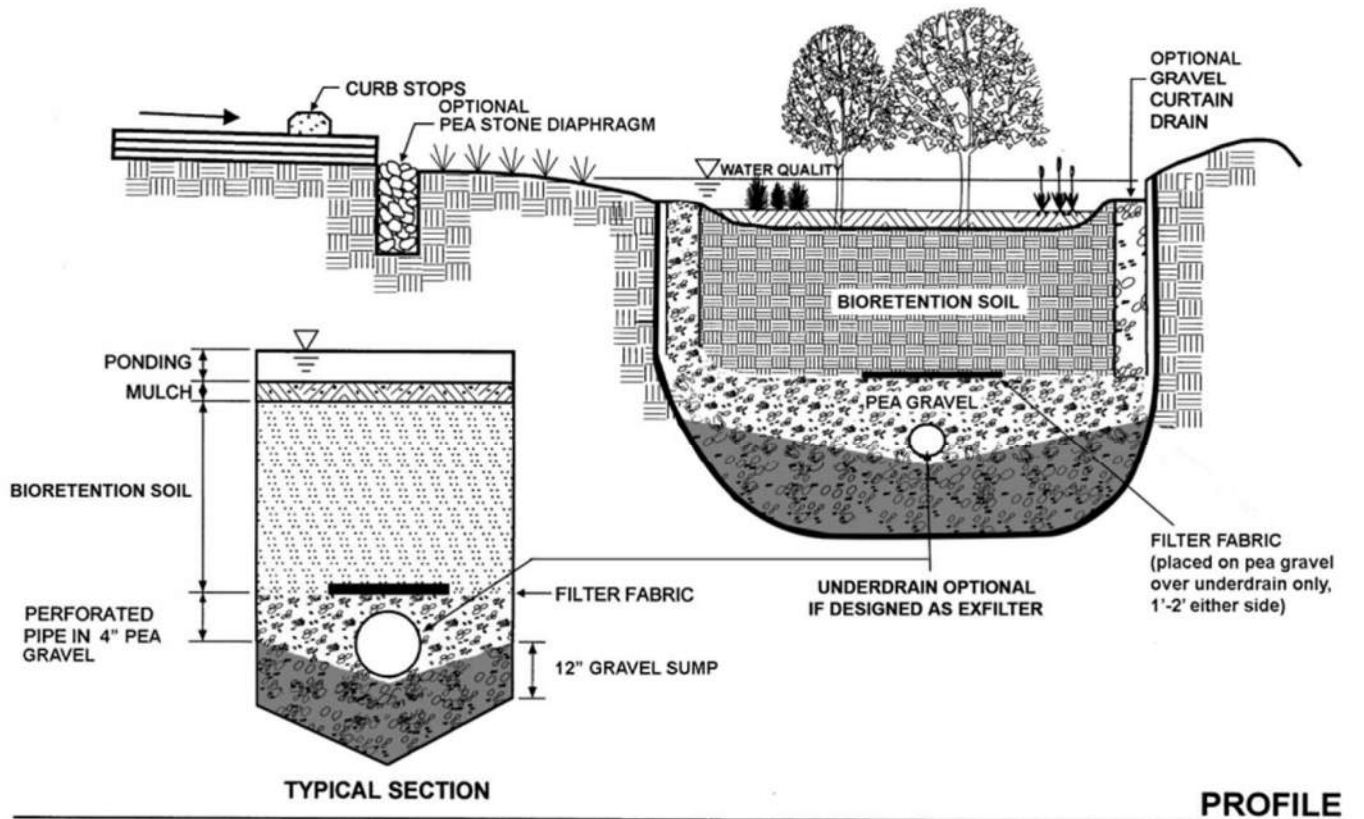
Tree Box Filter



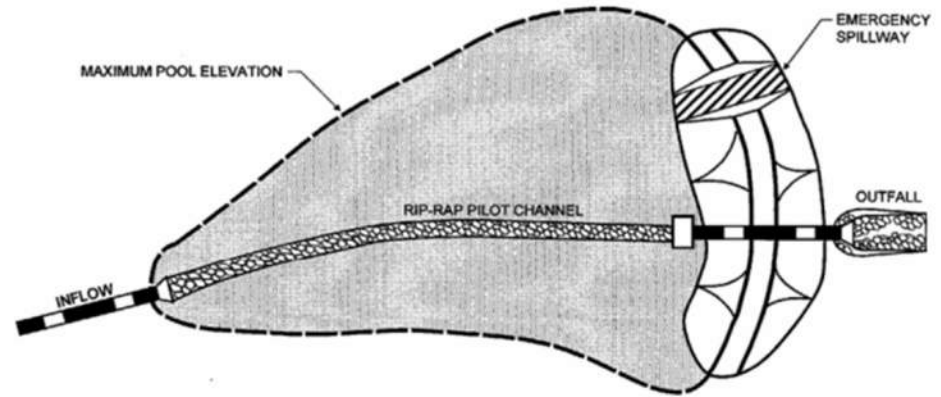
Detention Basin



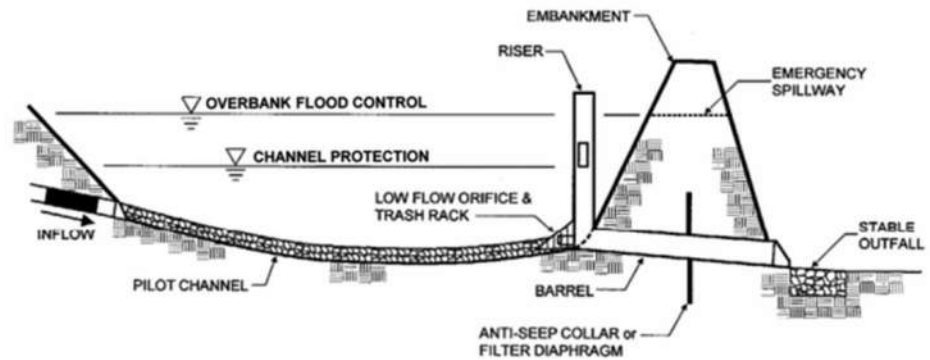
Sand Filter



Adapted from MDE, 2000



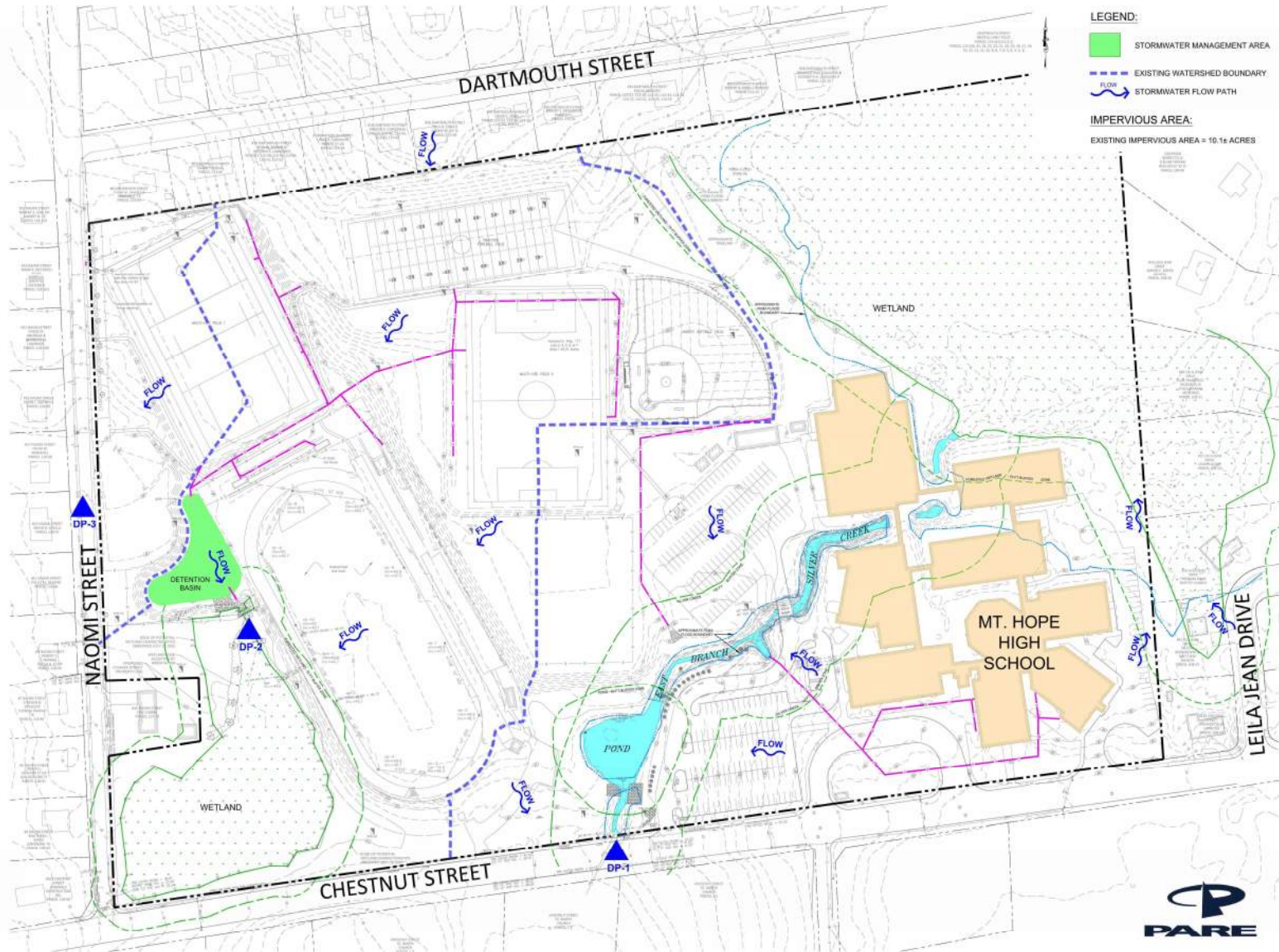
PLAN VIEW



PROFILE

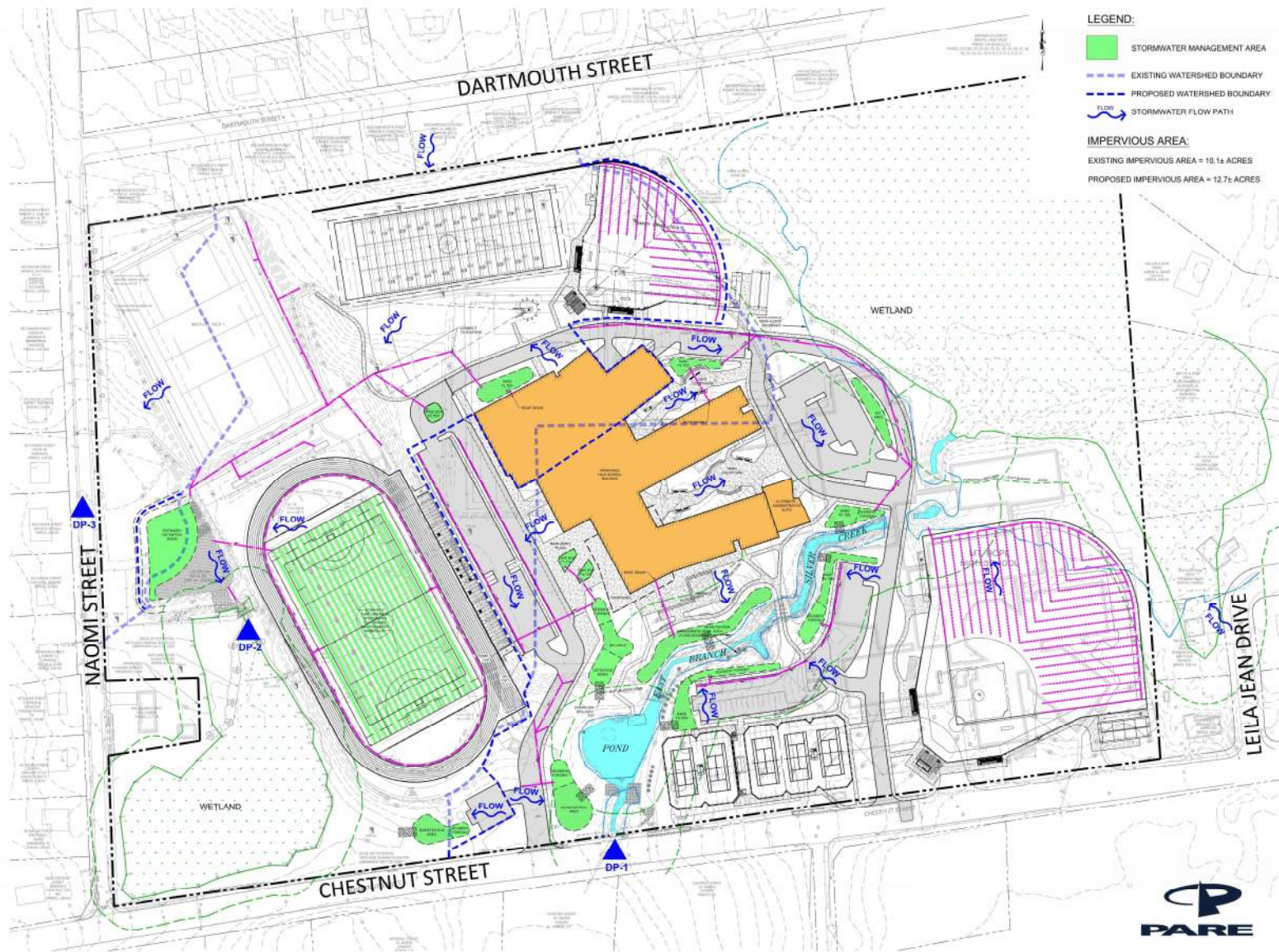
Stormwater Management - Existing

- Roof and pavement areas flow directly into Silver Creek
- Only one stormwater management area.

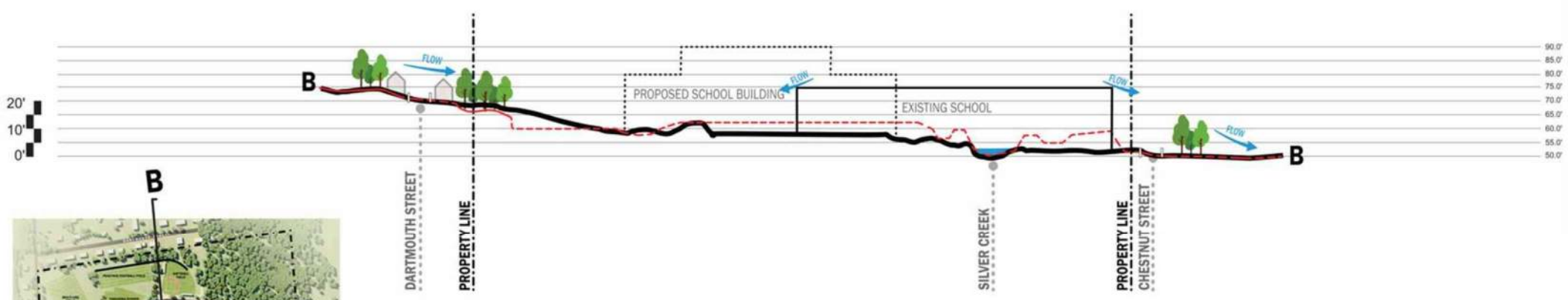
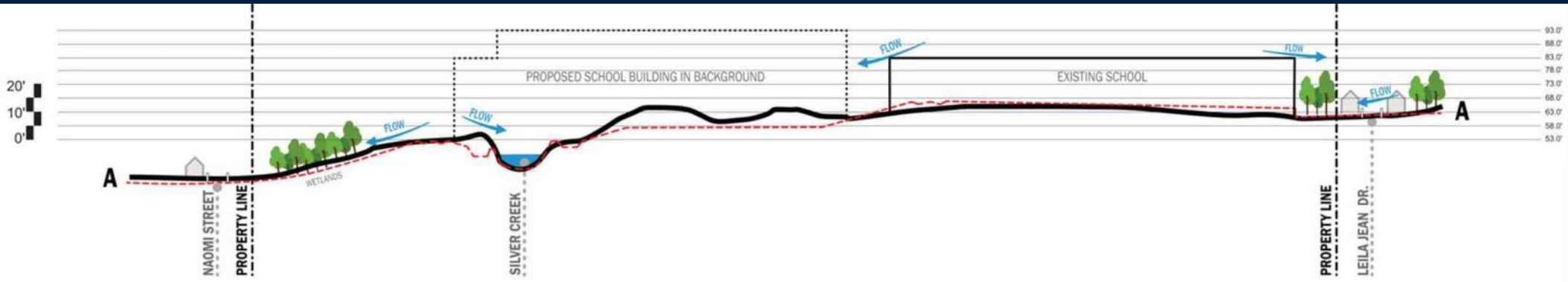


Stormwater Management - Proposed

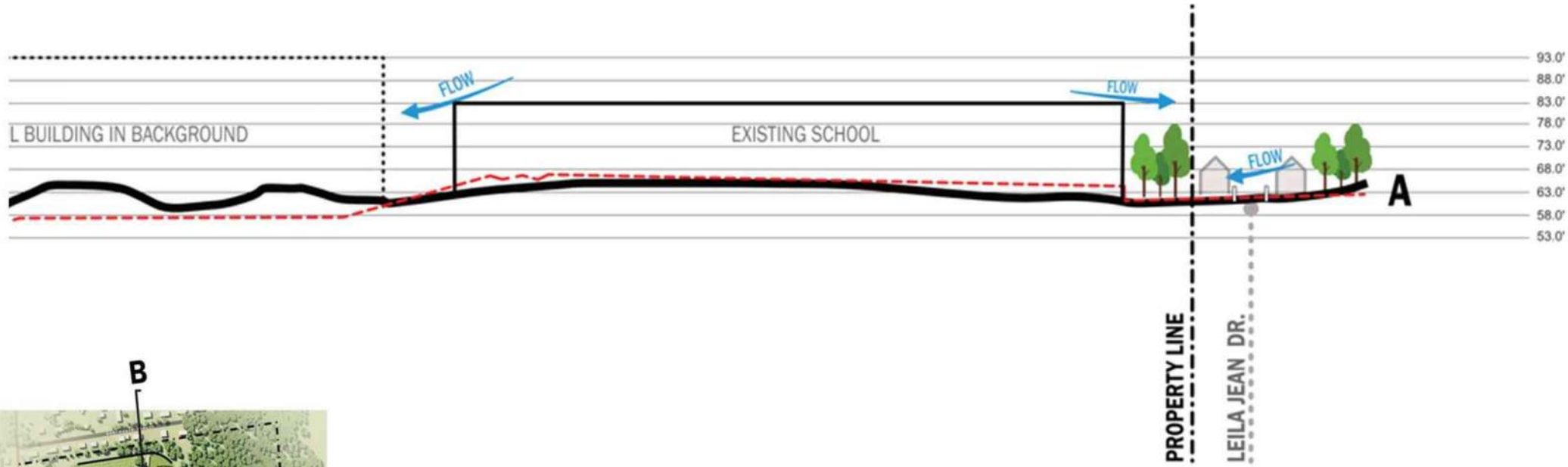
- Improvement to current condition
- Stormwater management features
- Restoration of vegetation at the creek
- Keeping out of the floodplain
- Addressing the high water table



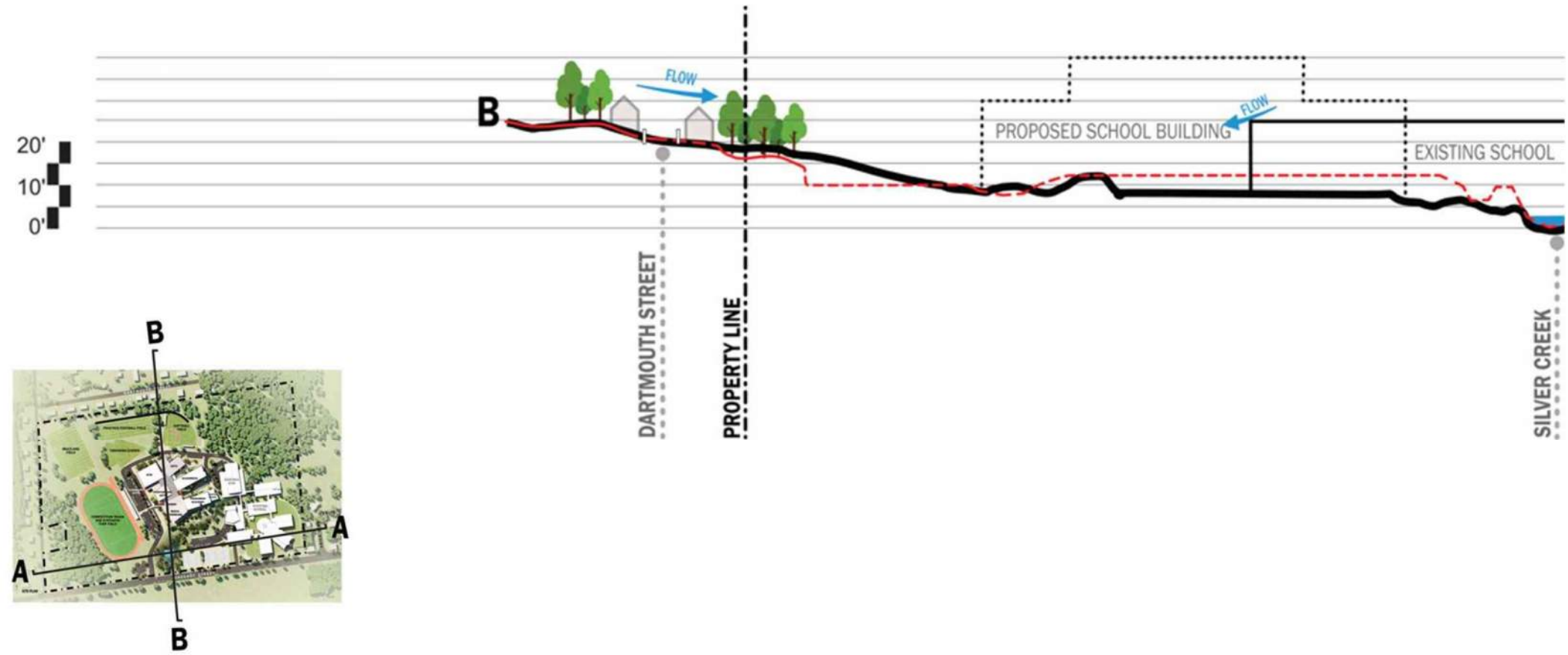
SITE SECTIONS



SITE SECTION - LEILA JEAN DRIVE



SITE SECTION - DARTMOUTH STREET



NEXT STEPS – STORMWATER DESIGN PROCESS

- Updated existing conditions plan
- Delineate wetlands on MHHS site near Leila Jean Drive
- Site walk with abutters to understand specific concerns
- Conduct additional test pits
- Develop stormwater management design
- Local and state permit process with the Town of Bristol and RIDEM

PROJECT BUDGET



PMA Consultants

PERKINS —
EASTMAN

RIDE UPDATE

SCHOOL BUILDING AUTHORITY
at the Rhode Island Department of Education



School Cost

For the RIDE school facilities assessments, project costs per square foot were developed based on a review of a variety of school project cost data from completed Rhode Island projects, similar Massachusetts and Connecticut K-12 schools, and national square foot school cost publications. As the determination of a single square foot cost for each school type is variable, due to its location geographically (suburbs versus city), varying site conditions, un-predictable economic influences, etc., the square foot costs reflect total project costs per square foot for the representative school type.



COST PER SQUARE FOOT

The total project square foot costs assumed 2023 economics and a hard bid (lump sum) environment. Focused on the low bidder's bid, these costs include a 20% allowance for all project soft costs and are in line with RIDE School Construction Regulations (5/24/07) regarding eligible project costs:

- Elementary School: \$564/sf
- Middle School: \$592/sf
- High School: \$628/sf



COST PER STUDENT

Combining furniture, fixtures, and equipment (FF&E), and technology (IT) into one total budget provides the most flexibility to each district. The FF&E and IT allowances assumes an ES of 75,000 sf with 350 students; a MS of 120,000 sf with 675 students; and a HS of 175,000 sf with 890 students. The following per student budgets for FF&E and IT budgets are:

- FF&E: \$2,100 /student
- IT: \$3,000/student

RIDE LETTER – BONUS ELIGIBILITY

63% Base

+ up to 20% Bonus

Districts are eligible for two percent (2%) additional reimbursement funds for projects that achieve energy efficiency thirty percent (30%) above the RI Building Energy Code; 3% additional reimbursement for energy efficiency forty percent (40%) above the RI Building Energy Code; and four percent (4%) additional reimbursement for energy efficiency fifty percent (50%) above the RI Building Energy Code.

In the "Bonus"

Permanent

School Safety & Security

If 75% of a project is for the purposes of School Safety & Security, then the project shall receive a 5% bonus.

In order to qualify for the increased share ratio for the temporary bonuses, 25% of the project costs, or a minimum of \$500,000, must be specifically directed to these purposes.

Commence by 2022 - Complete by 2027



Health & Safety

Projects that address Health and Safety Deficiencies shall receive a 5% bonus.



Educational Enhancements

Projects that address Educational Enhancements such as Early Childhood Education and Career and Technical Education shall receive a 5% bonus.

Commence by 2023 - Complete by 2028



Replacement

Replacement of a facility that has a Facility Condition Index of 65% or higher shall receive a 5% bonus.



Decrease Overcrowding

New construction or renovation that decreases overcrowding from more than 120% functional utilization to between 85% and 105% shall receive a 5% bonus.



Newer & Fewer

Consolidation of two or more school buildings (Newer and Fewer) into one school building shall receive a 5% bonus.

or

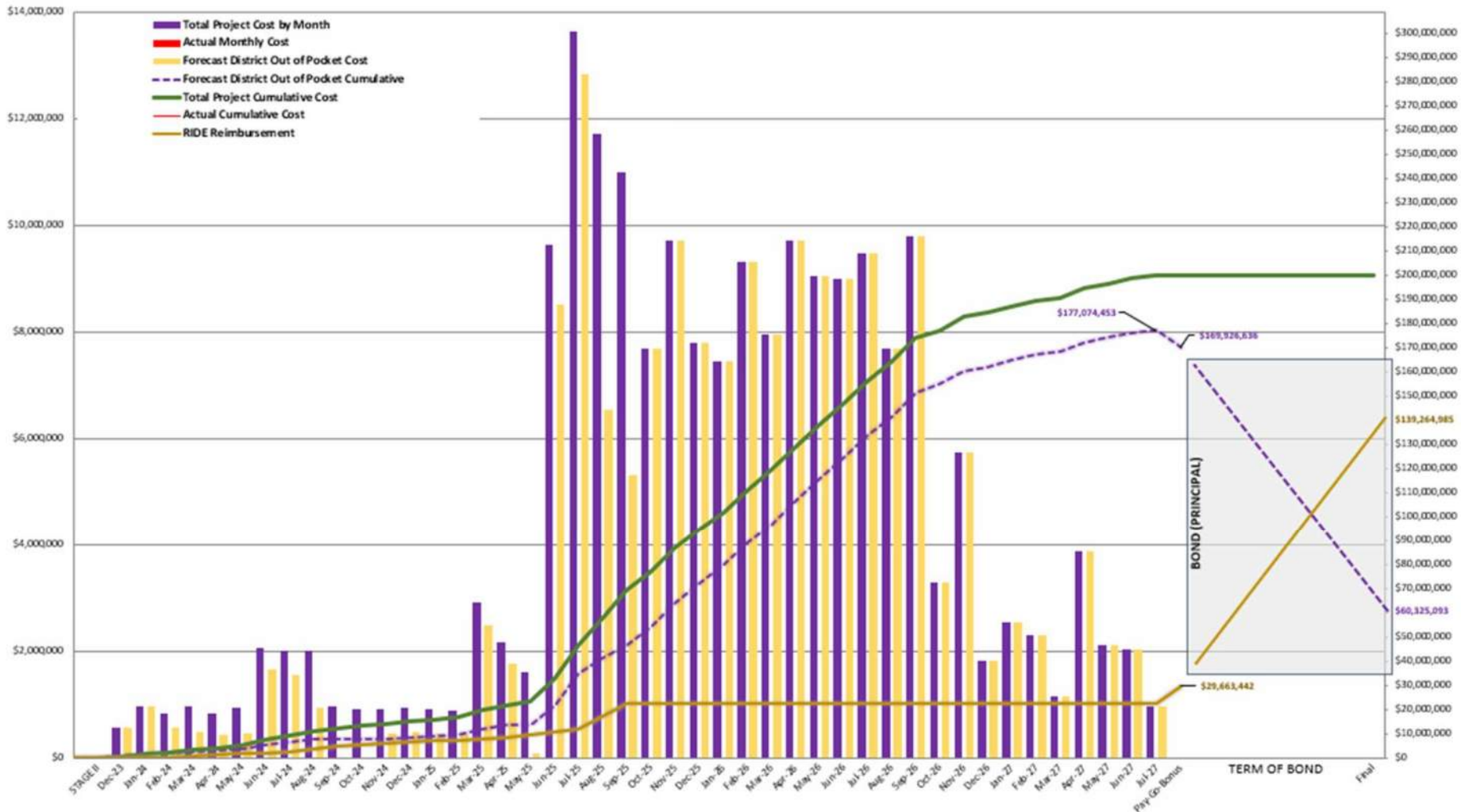


Increase Utilization

New construction or renovation that increases functional utilization from less than 60% to more than 80% shall receive a 5% bonus.

CASHFLOW

BWRSD Cashflow Projection - SD Phase - \$200M TPB



TAX IMPACT CALCULATOR

BRISTOL WARREN REGIONAL SCHOOL DISTRICT
RIDE NECESSITY OF SCHOOL CONSTRUCTION - STAGE II
PROJECTED TAX IMPACT CALCULATOR



STEP #1 SELECT YOUR TOWN FROM DROP DOWN:

BRISTOL

STEP #2 ENTER YOUR ASSESSED VALUE:

\$372,600

(see link to assessor database below)

	<u>MONTHLY</u>	<u>QUARTERLY</u>	<u>ANNUALLY</u>
TAX IMPACT PROJECTION*	\$14.90	\$44.71	\$178.85

*Based upon 83% reimbursement rate, \$183.3M of eligible costs, 30 year bond at 4.5%, and partial offset by existing debt maturing on May 15, 2028.

BRISTOL ASSESSOR DATABASE

<https://data.nereval.com/Search.aspx?town=Bristol>

WARREN ASSESSOR DATABASE

<https://data.nereval.com/SearchInfo.aspx?town=Warren>

FY24 MEDIAN SINGLE-FAMILY HOME (BRISTOL): **\$372,600**

TAX IMPACT CALCULATOR

BRISTOL WARREN REGIONAL SCHOOL DISTRICT
RIDE NECESSITY OF SCHOOL CONSTRUCTION - STAGE II
PROJECTED TAX IMPACT CALCULATOR



STEP #1 SELECT YOUR TOWN FROM DROP DOWN:

WARREN

STEP #2 ENTER YOUR ASSESSED VALUE:

\$388,450

(see link to assessor database below)

	<u>MONTHLY</u>	<u>QUARTERLY</u>	<u>ANNUALLY</u>
TAX IMPACT PROJECTION*	\$26.87	\$80.60	\$322.41

*Based upon 83% reimbursement rate, \$183.3M of eligible costs, 30 year bond at 4.5%, and partial offset by existing debt maturing on May 15, 2028.

BRISTOL ASSESSOR DATABASE

<https://data.nereval.com/Search.aspx?town=Bristol>

WARREN ASSESSOR DATABASE

<https://data.nereval.com/SearchInfo.aspx?town=Warren>

FY24 MEDIAN SINGLE-FAMILY HOME (WARREN): **\$388,450**

COMMUNITY OUTREACH



PMA Consultants

PERKINS —
EASTMAN

OUTREACH

- ✓ Website Updates
- ✓ Social Media Launch
- ✓ Building Committee
- ✓ School Committee
- ✓ Bristol Town Council
- ✓ Warren Town Council
- ✓ Bristol Concert Series
- ✓ Warren Concert Series
- ✓ Hope & Main Schoolyard Markets
- ✓ Bristol Community Night Out
- ✓ MHHS Class of 2027 Welcoming
- ✓ MHHS Home Football Game
- ✓ Bristol Porchfest
- ✓ East Bay Running Festival
- ✓ Community Forum & MHHS Tour
- ✓ Abutters Meeting (10/11)
- ✓ Warren Walkabout (10/8, 10/15)
- ✓ Halloween Walkabout (10/29)
- ✓ Community Forum (11/1)
- ❑ VOTE (11/7)





PMA Consultants

**PERKINS —
EASTMAN**

QUESTIONS? | THANK YOU!