

## Values

Excellence • Achievement • Innovation • Community

## Mission

The Balsz District nurtures the unique skills and abilities of all learners.

## Vision

Students empowered to be globally competitive and innovative thinkers who contribute to their community's sustainability.



SCHOOL DISTRICT

4825 E. Roosevelt Street  
Phoenix, AZ 85008  
Phone: 602.629.6400  
Fax: 602.629.6470



# English Language Development

## SEI Program Description

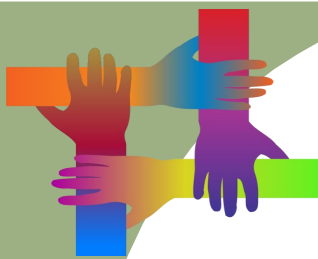


*Believe In*



Balsz Believes In You!





# English Language Development

In 2019, the Arizona State Board of Education was charged with developing and adopting research-based models of Structured English Immersion (SEI) to be used in school districts and charter schools in Arizona. Arizona Revised Statute (A.R.S) §15-756.01 requires that the SEI Models include a minimum of 120 minutes per day of English Language Development (ELD) for grades K- 5, and a minimum of 100 minutes of ELD per day for grades 6-12. Approved models adhere to the following criteria:

- Provide coherent instruction aligned with Arizona's English Language Proficiency Standards and Performance Indicators.
- Include oral and written language instruction, including structured opportunities to develop verbal and written skills and comprehension strategies.
- Include access to complex language content through grade-level texts and materials with appropriate support.
- Include parental engagement strategies.

## SEI Program Models

Under SB1014, local education agencies (LEAs) must either implement one of the Structured English Immersion (SEI) Models that have been approved by the state, OR they may submit an application to implement a different SEI model or an alternate program model. The SEI Models approved by the State Board of Education are:

- Pull-Out SEI Model
- Two-Hour SEI Model
- Newcomer SEI Model

Please note that for the 2023-3024 school year, Balsz Elementary School District is only offering the Pull-Out Model.

<b>Pull-Out SEI Model</b>	<b>Targeted Instruction</b> 60/50 minutes daily	<b>Integrated Instruction</b> 60/50 minutes daily	Remainder of the academic school day is taught in English.
	Instructional Grouping: ELs Only	Instructional Grouping: ELs with non-ELs	ELs with non-ELs
<b>Two-Hour SEI Model</b>	<b>Targeted Instruction</b> 120/100 minutes daily	<b>Integrated Instruction</b> The rest of the academic school day, minimum of one class/period	Remainder of the academic school day is taught in English.
	Instructional Grouping: ELs Only	Instructional Grouping: ELs with non-ELs	ELs with non-ELs
<b>Newcomer SEI Model</b>	<b>Targeted Instruction</b> 120/100 minutes daily	<b>Integrated Instruction</b> 120/100 minutes daily	Remainder of the academic school day is taught in English.
	Instructional Grouping: ELs Only	Instructional Grouping: ELs Only	ELs with non-ELs



## English Language Learning FAQ

⇒ How are students identified as EL?

EL (English Learner) students are identified through a home language survey and the AZELLA. If the home language survey indicates a language other than English for any one of the three responses, then the student is administered the AZELLA. If the student does not achieve proficiency on the AZELLA, the student is identified as an EL and is eligible to receive EL services.

⇒ When are students assessed on AZELLA? How many times per year are they assessed?

Students that score less than proficient on the AZELLA test are eligible for EL services. Students that are eligible for EL services will be administered the Spring AZELLA reassessment annually until student scores proficient.

⇒ What are EL services?

Arizona requires school districts and charter schools (otherwise known as Local Education Agencies or LEAs) with English learner (EL) students to provide English language development (ELD) instruction using a structured English immersion (SEI) model. Arizona uses the Language Development Approach.

## How Can I Help My Student?

⇒ Empowering ELL Parents and Families at Home

- English
- Spanish

⇒ Learning Together at Home

- English
- Spanish

⇒ Help Your Child Learn to Read

- English
- Spanish

⇒ Colorín Colorado

- English
- Spanish

