

# Princeton Public Schools Potential Facilities Expansion "Concept Plans"

**December 12, 2023**



## AGENDA

<b>1</b>	<b>Potential Projects- An Overview</b>	<b>Slides 3 - 13</b>
<b>2</b>	<b>Preliminary Cost Range and Schedule</b>	<b>Slides 14 - 15</b>
<b>3</b>	<b>Questions?</b>	<b>Slide 16</b>

## 1 - Potential Projects- An Overview

**The following projects are being considered for inclusion in the Referendum:**

1	Additions and Renovations to Princeton Middle School
2	Additions and Renovations to Community Park ES
3	Additions and Renovations to Littlebrook ES
4	Minor Renovations to Princeton High School Tech Space
5	Classroom HVAC Improvements at Princeton HS
5	Demolition and Site Development of Valley Road/Witherspoon Street Dilapidated Building Wing

**An overview of the projects follows. These plans are preliminary and will be refined as we move forward in the collaborative process.**

# PRINCETON MIDDLE SCHOOL

## Princeton Middle School- Site Impact Areas

### New One-Story Addition

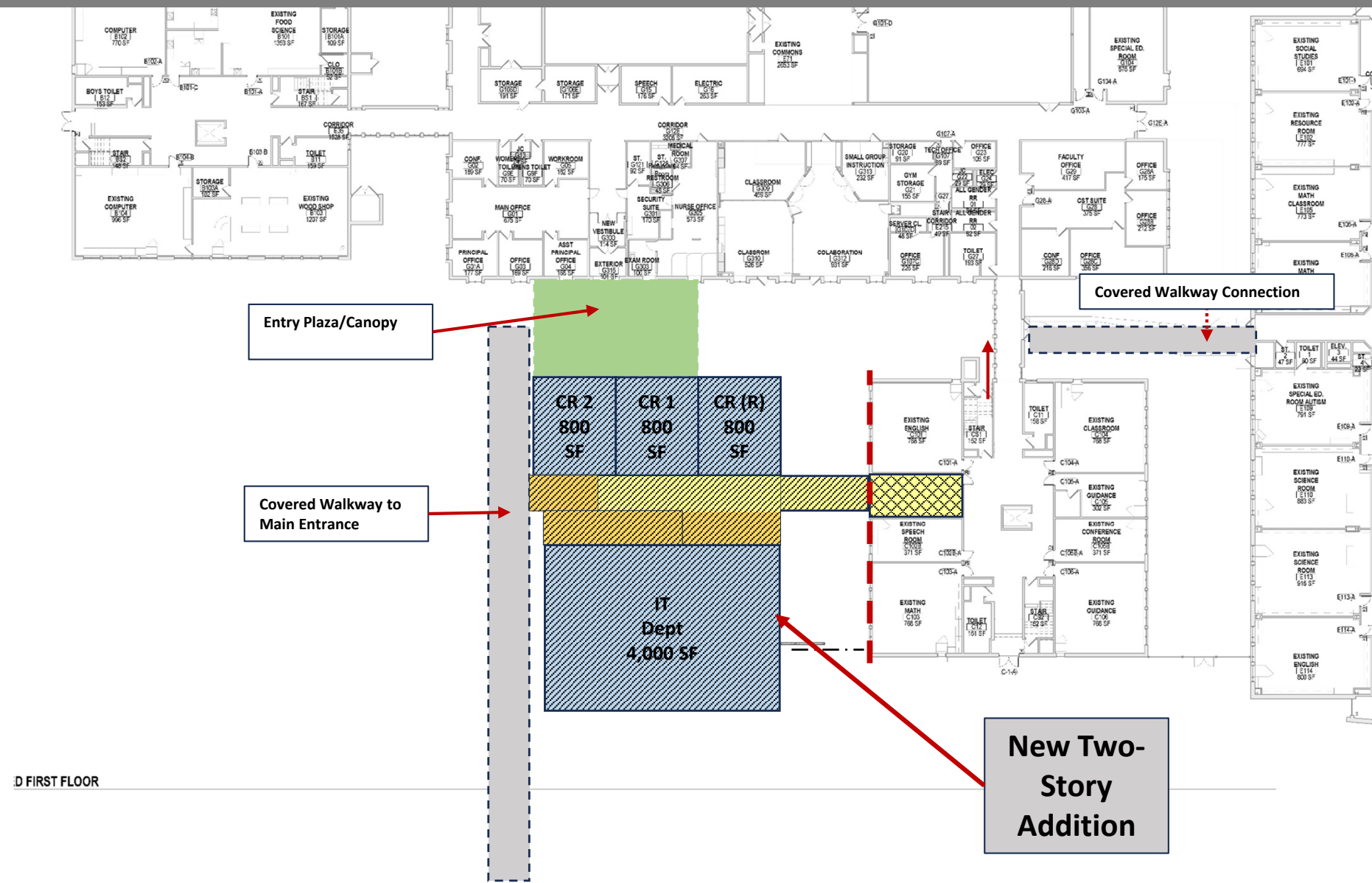
- Cafeteria Expansion
- Multi-Purpose/Aux Gym Space

### New Two-Story Addition

- Classrooms
- Science Lab
- District IT Department



# PRINCETON MIDDLE SCHOOL



## Two Story Addition

### First Floor

Includes:

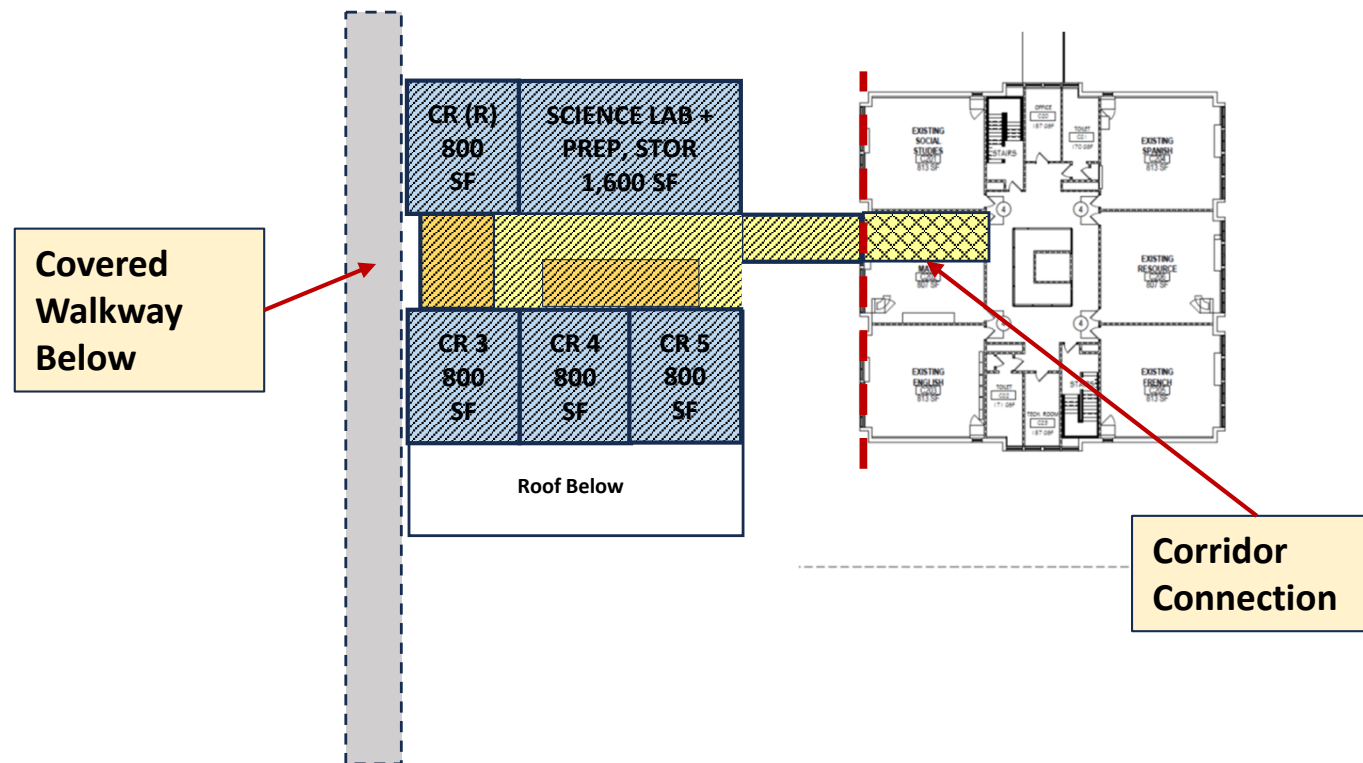
Flexible Classrooms: 3

IT Department: Relocated from HS. Offices, work space, conference, future main frame prep.

Support Spaces: Small toilet rooms, storage, mechanical and custodial space.



# PRINCETON MIDDLE SCHOOL



## Two Story Addition

### Second Floor

Includes:

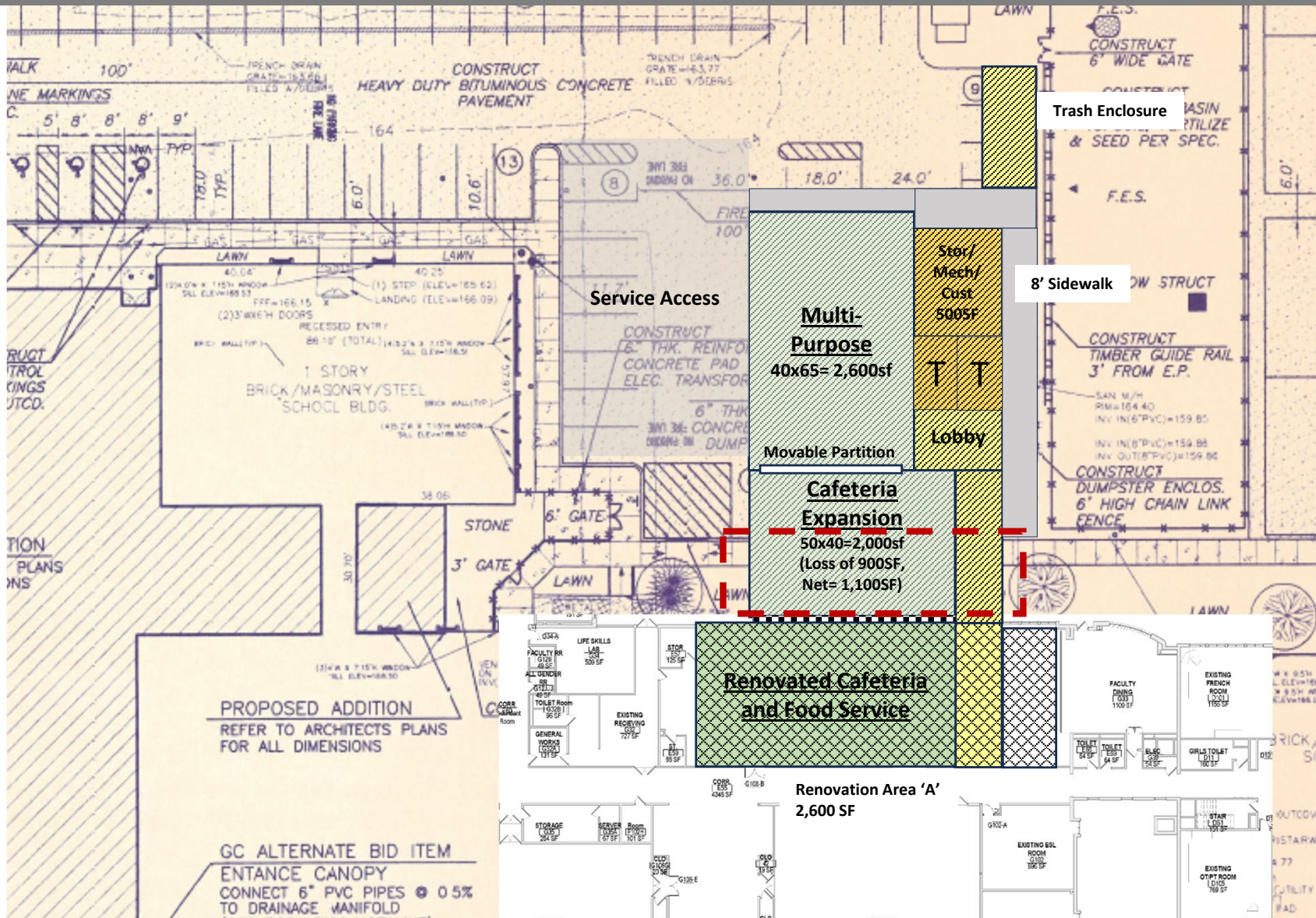
**General Classrooms:** 4 Total new rooms @800sf each. Net= 3 new classrooms

### Science Lab Classroom:

Includes prep and storage rooms

**Support Spaces:** Small toilet rooms, storage, mechanical and custodial space.

# PRINCETON MIDDLE SCHOOL



## Design Features

### Single Story Addition

(approximately 7,200sf)

Mid-volume space allowing for 12' ceiling heights minimum. Includes:

**Cafeteria/Food Service:** Renovate existing, add new space net 1,100SF. Moveable partition can allow expanded dining area in multi-purpose room.

**Multi-Purpose Room:** Movable partition between this room and cafeteria can provide up to 3,700 SF of open area.

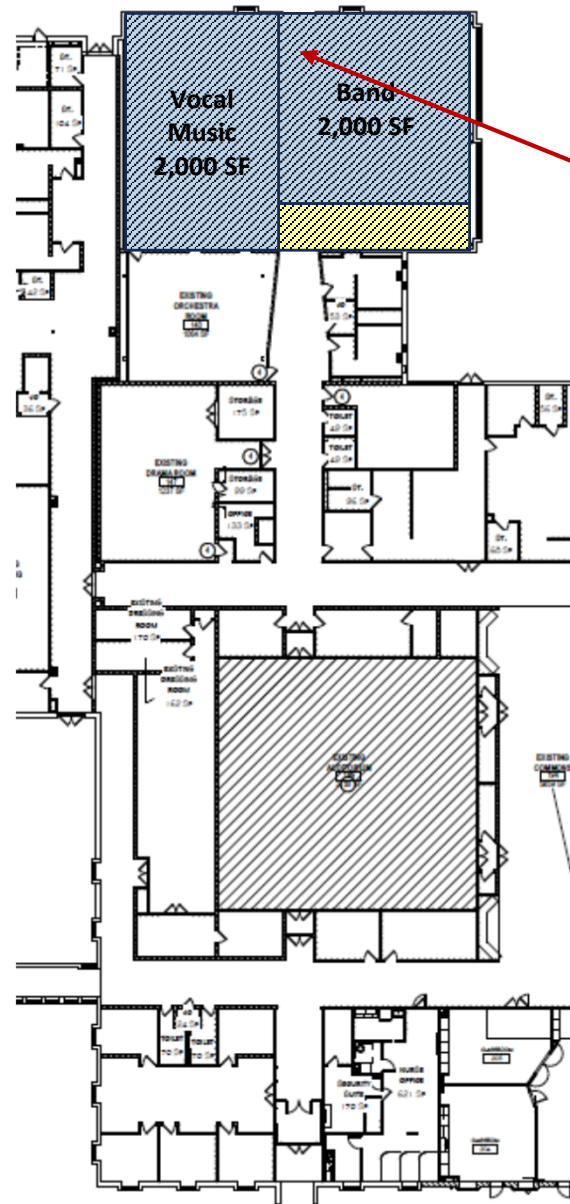
**Support Spaces:** Small toilet rooms, storage, mechanical and custodial space.

1/16" scale= 240%

Princeton Public Schools  
Princeton Middle School

Preliminary Floor Plan- Cafeteria/Multi-Purpose/Aux Gym

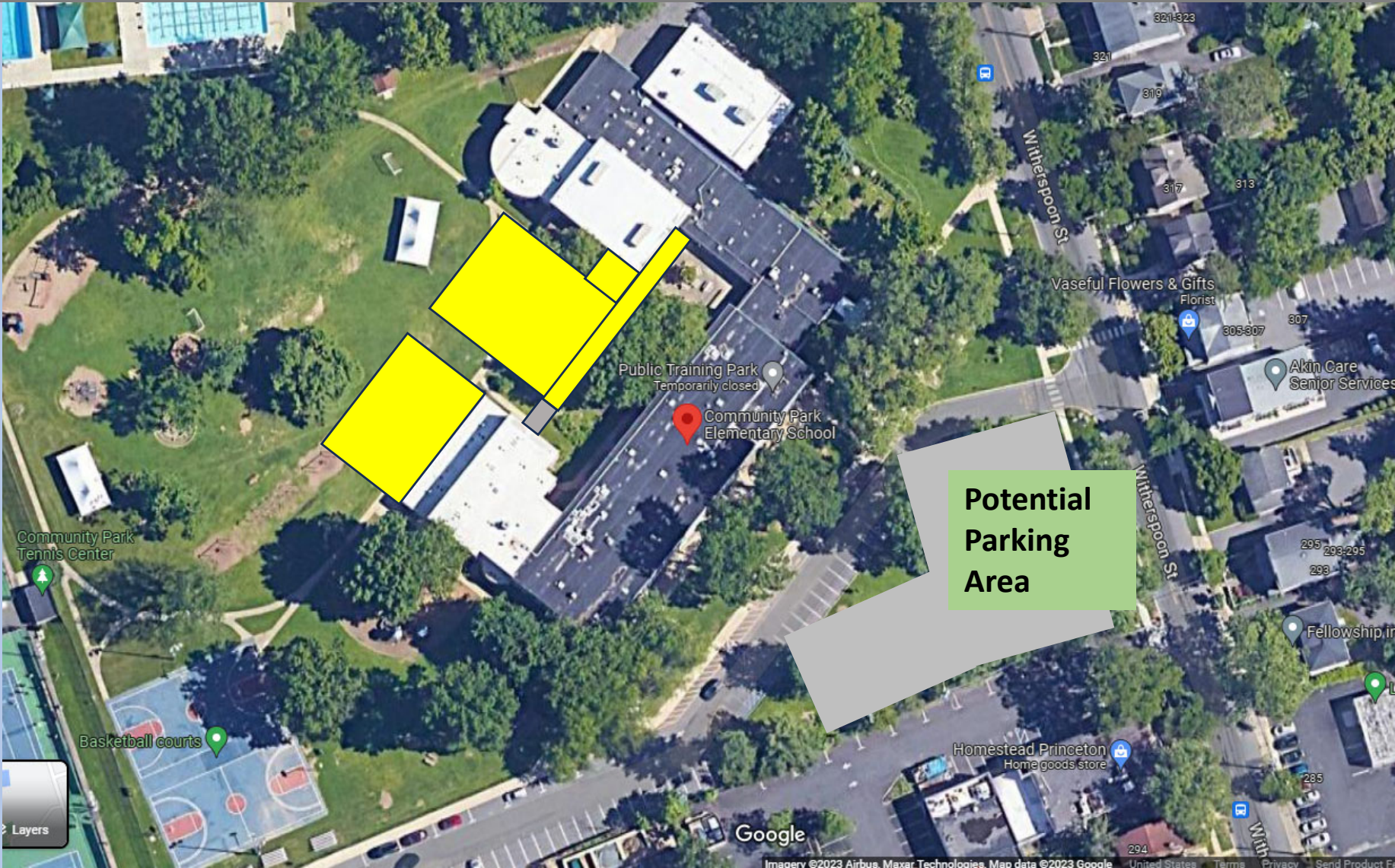
Slide #:7



Renovate  
Existing Music  
Area- Convert  
Four Smaller  
Existing  
Rooms to Two  
Larger Music  
Rooms



# COMMUNITY PARK ELEMENTARY SCHOOL



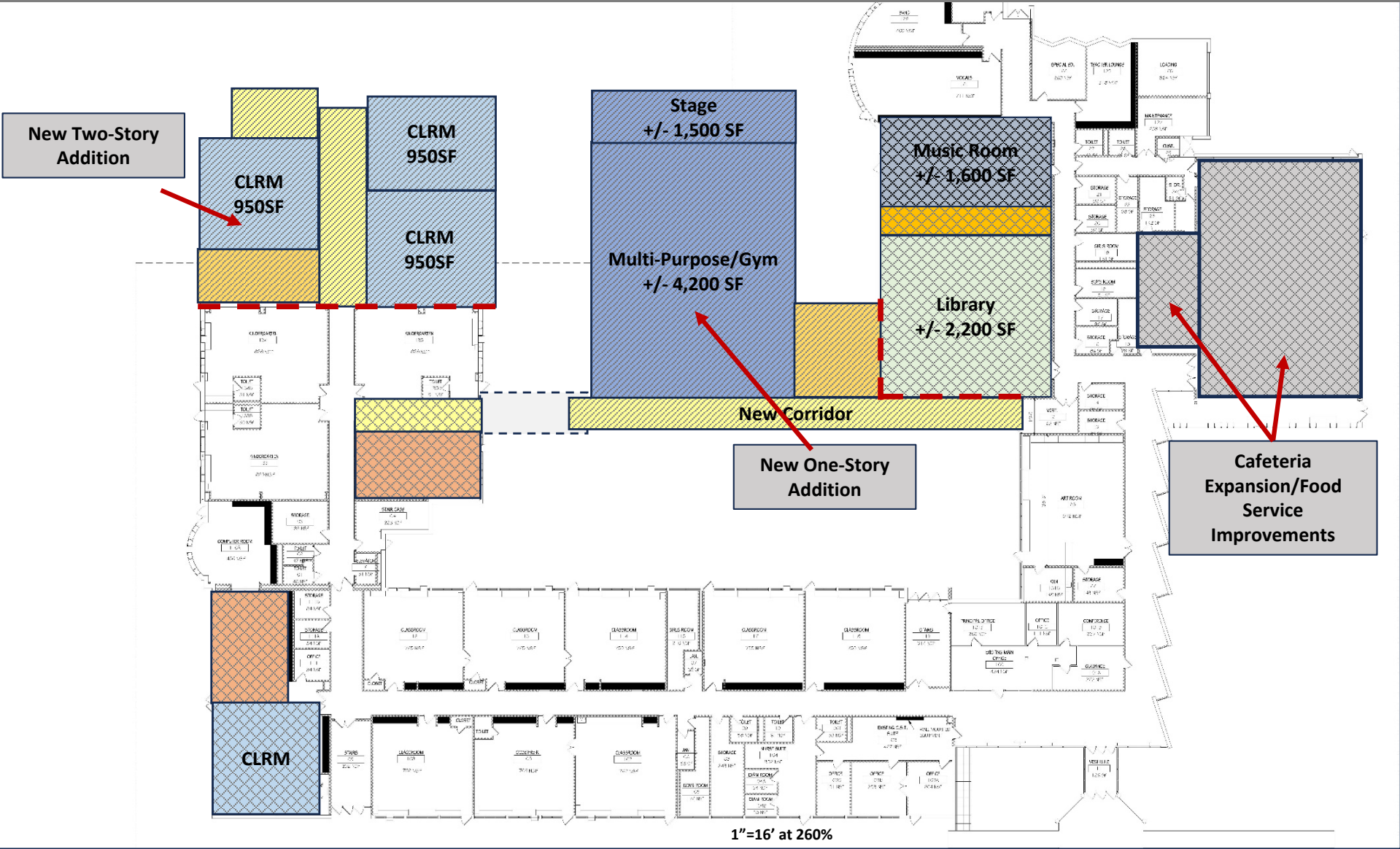
## Community Park Elementary School Two Areas of Impact

**Princeton**  
Public Schools

Live to Learn, Learn to Live



# COMMUNITY PARK ELEMENTARY SCHOOL



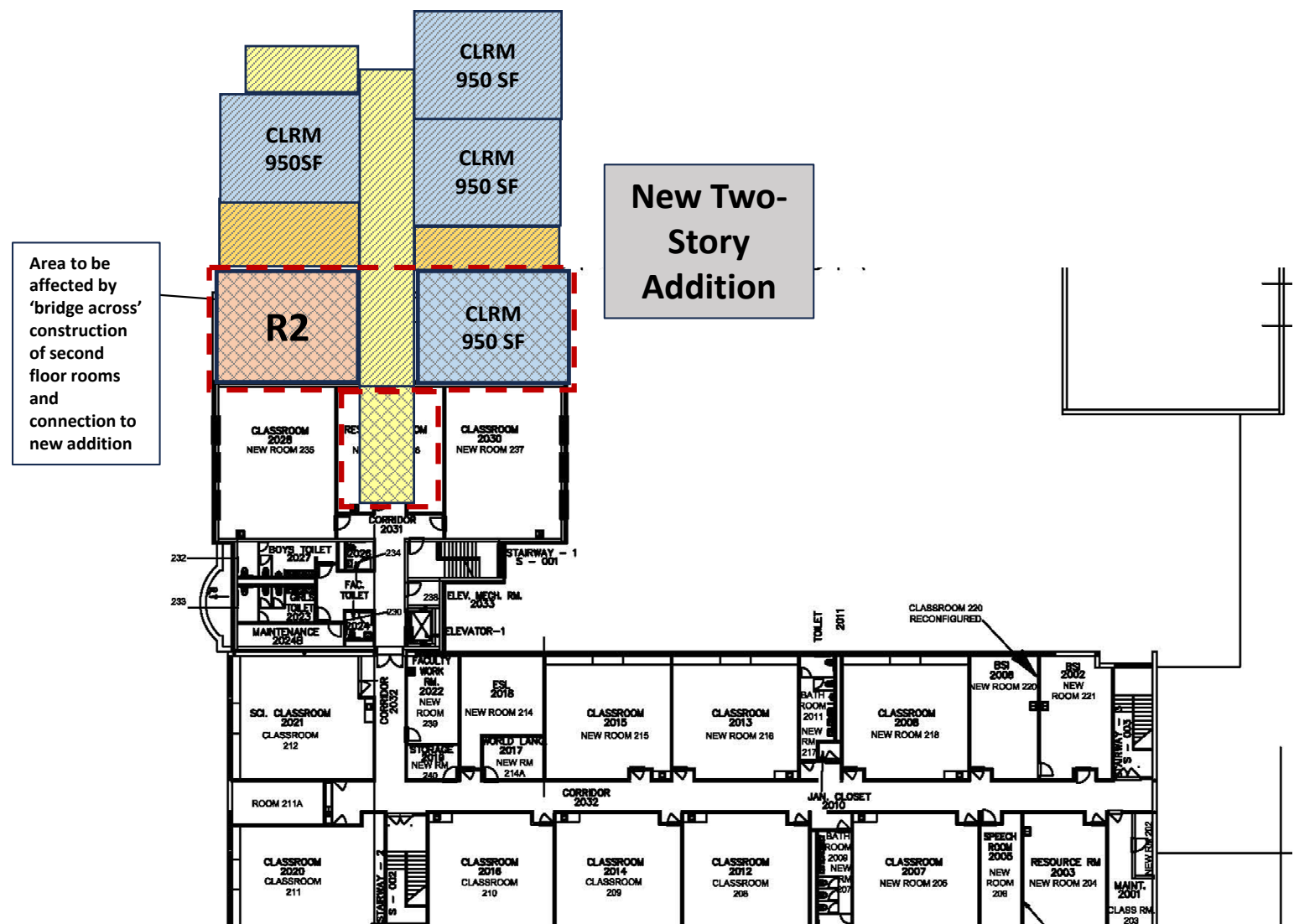
## Type of Program Space

	Classroom
	Gym/Multi-purpose/Stage
	Cafeteria/Food Service
	Library
	Music Room
	Small Group/Pull-Outs TBD
	Storage/Mech/Toilets, Etc.
	Circulation- Corridors/Stairs

## Type of Construction

	Renovations
	New Construction

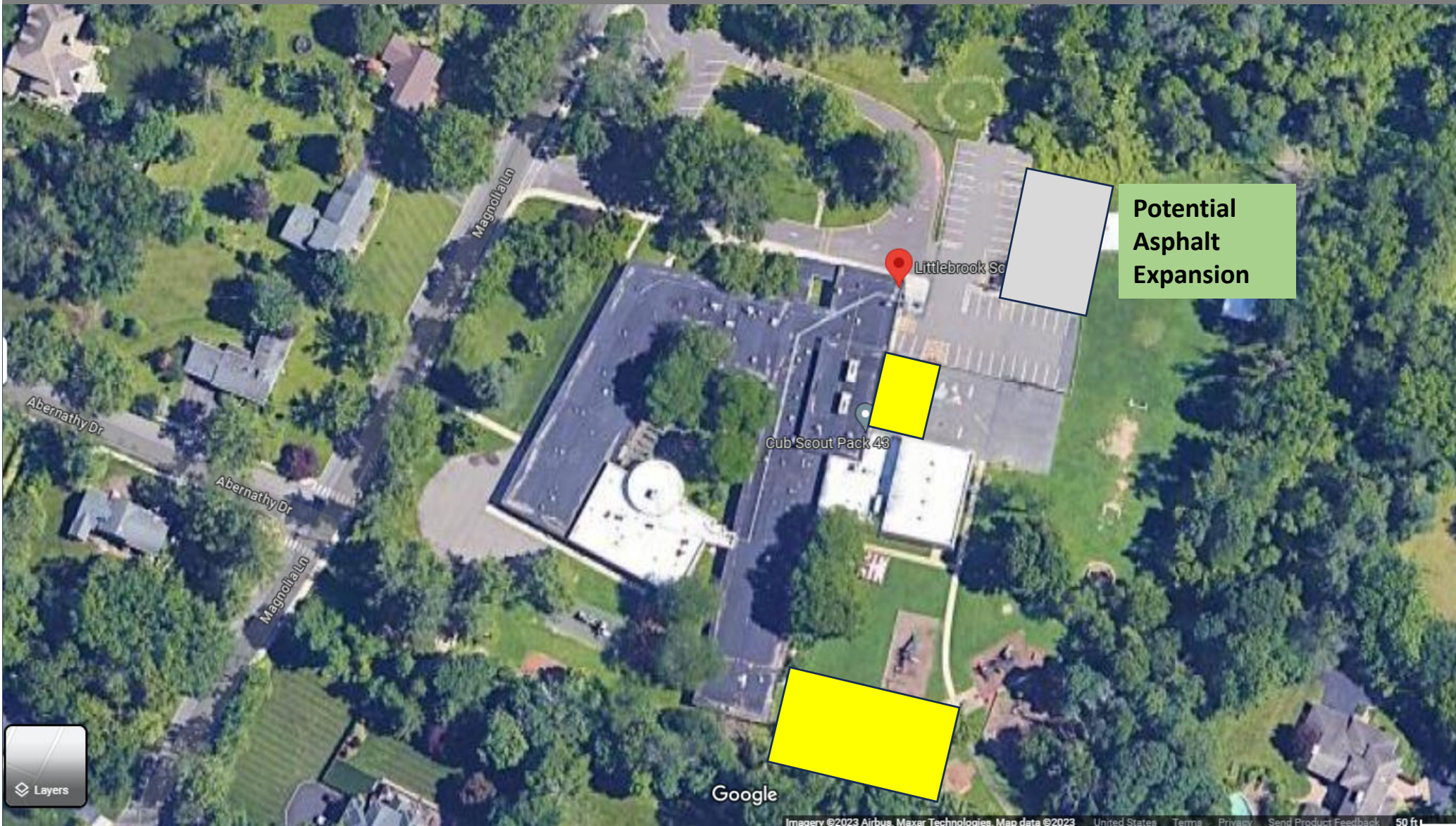
# COMMUNITY PARK ELEMENTARY SCHOOL



Type of Program Space	
	Classroom
	Small Group/Pull-Outs TBD
	Storage/Mech/Toilets, Etc.
	Circulation- Corridors/Stairs
Type of Construction	
	Renovations
	New Construction



# LITTLEBROOK ELEMENTARY SCHOOL



**Littlebrook  
Elementary  
School  
Site Impact  
Areas**





## 2 Preliminary Cost Range and Schedule

<u>LOCATION</u>	<u>PROJECT COST RANGE</u>
Princeton Middle School	\$29.3M - \$30.8M
Community Park ES	\$23.8M - \$25.1M
Littlebrook ES	\$12.8M - \$13.4M
Princeton HS Minor Tech Area Renovation	\$2.7M - \$2.8M
Princeton High School HVAC	\$9.1M - \$9.6M
Valley Road Demolition of Older Section	\$4.1M - \$4.3M
<b><u>TOTALS</u></b>	<b>\$81.8M - \$85.1M</b>

	<u>NOTES</u>
1	Costs above are preliminary and estimated based upon information known to date.
2	All costs are subject to refinement as scope of work and projects are developed.
3	More details about costs will be shared at future meetings.

## 2 Preliminary Schedule

<u>Event</u>	<u>Anticipated Dates</u>
Referendum Date	FALL 2024
Design and Bidding	October 2024 – June 2025
Construction- Additions	August 2025 – May 2027
New Spaces Open for Use- School Year	September 2027
Construction Renovations	June 2026 – December 2027
Substantial Completion of All Work	December 2027

	<u>NOTES</u>
1	Schedule may be affected by issues such as unforeseen conditions, agency reviews, long lead times and other factors.
2	Schedule assumes passage of Referendum in September of 2024.

# 3 QUESTIONS





# Thank You!!

