



High School Boundary Process

December 12, 2023

Purpose

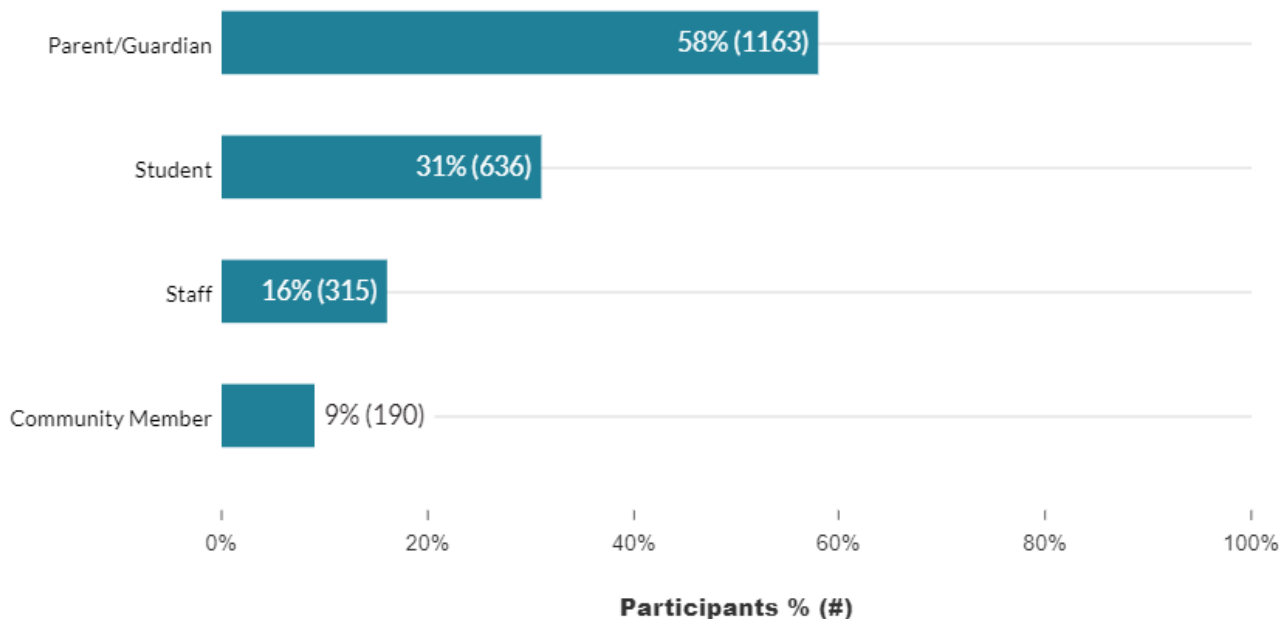
- Provide an update on the Boundary Process
 - Guiding Principles based on ThoughtExchange analysis
 - Preliminary Boundary Drafts
 - Community Engagement next steps

Background

- August 16th – October 1st: Pasco School District stakeholder engagement using the ThoughtExchange platform.
- Opening Question:
 - ***What is most important to you about how Pasco School District (PSD) makes decisions about boundary revisions for PSD high schools? Why is this important to you?***

ThoughtExchange Participation

- 2,132 respondents
 - 1,258 individual thoughts submitted
 - 24,229 ratings of thoughts collected



Action Taken

September-October

- Applications for the Boundary Input Technical Team were collected from stakeholder groups across PSD

October

- Boundary Input Team Established
 - 4 members drawn, 1 each from West, North, Central and East Pasco
 - 2 "At Large" members drawn
 - Principals from PHS, CHS, HVHS

Action Taken

November

- Boundary Input Team ThoughtExchange Analysis-November 5th
 - Teams given printed copies of all 1258 ideas collected through the ThoughtExchange process.
 - Teams were instructed to identify and highlight common thoughts found in the data using the following themes.

Feeder School

Location to Residence

Safety

Size

Transportation

Diversity

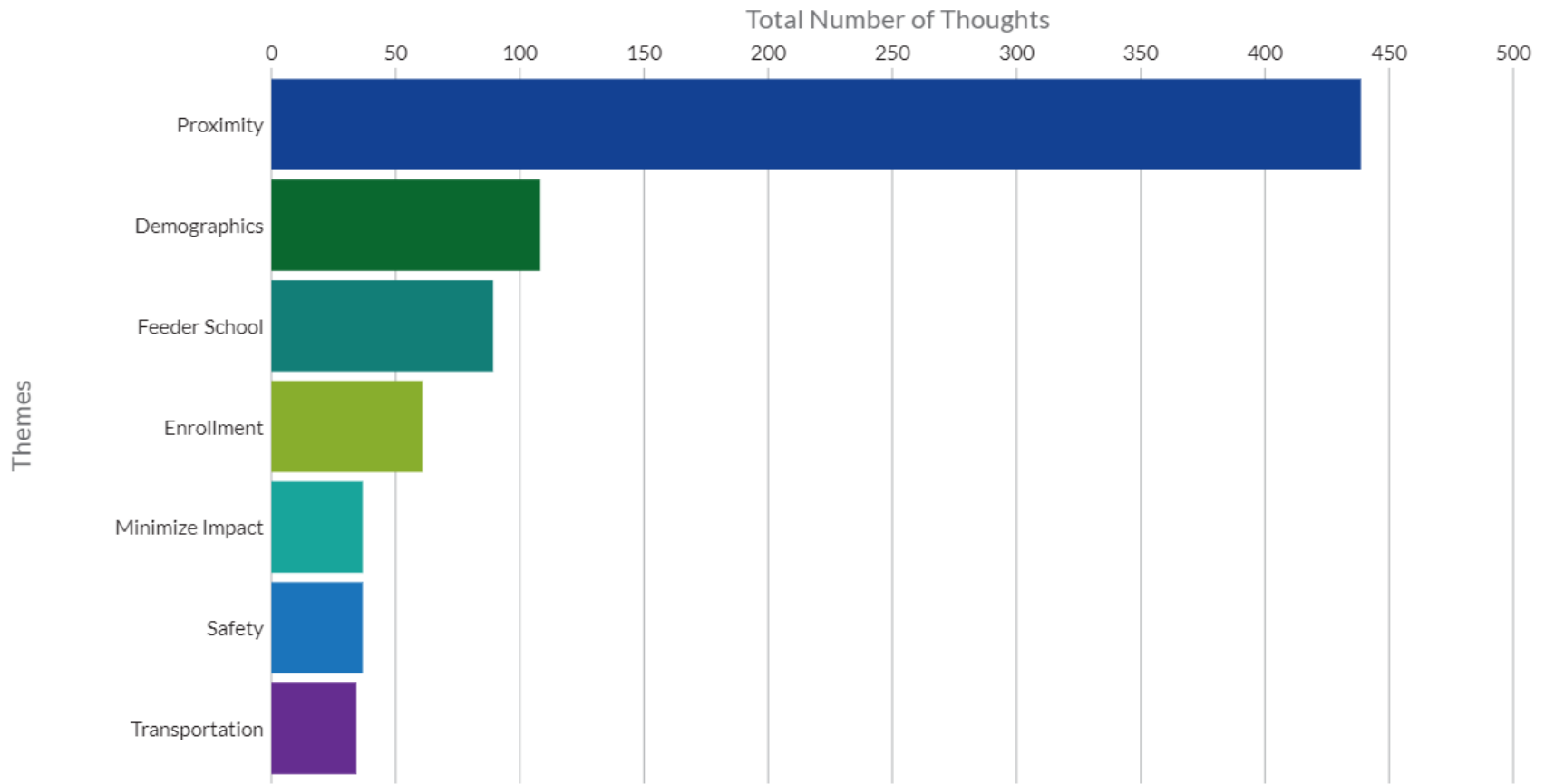
Student Impact

Action Taken

November continued

- Boundary Input Team ThoughtExchange Analysis-November 5th
 - The purpose of this activity was for our members to become familiar with the feedback provided from our community as well as to summarize data into categories.
 - The summary of the work from November 5th was collated to provide the following set of Guiding Principles that will be used to draft boundary scenarios and guide decision making process.

Guiding Principles for High School Boundary

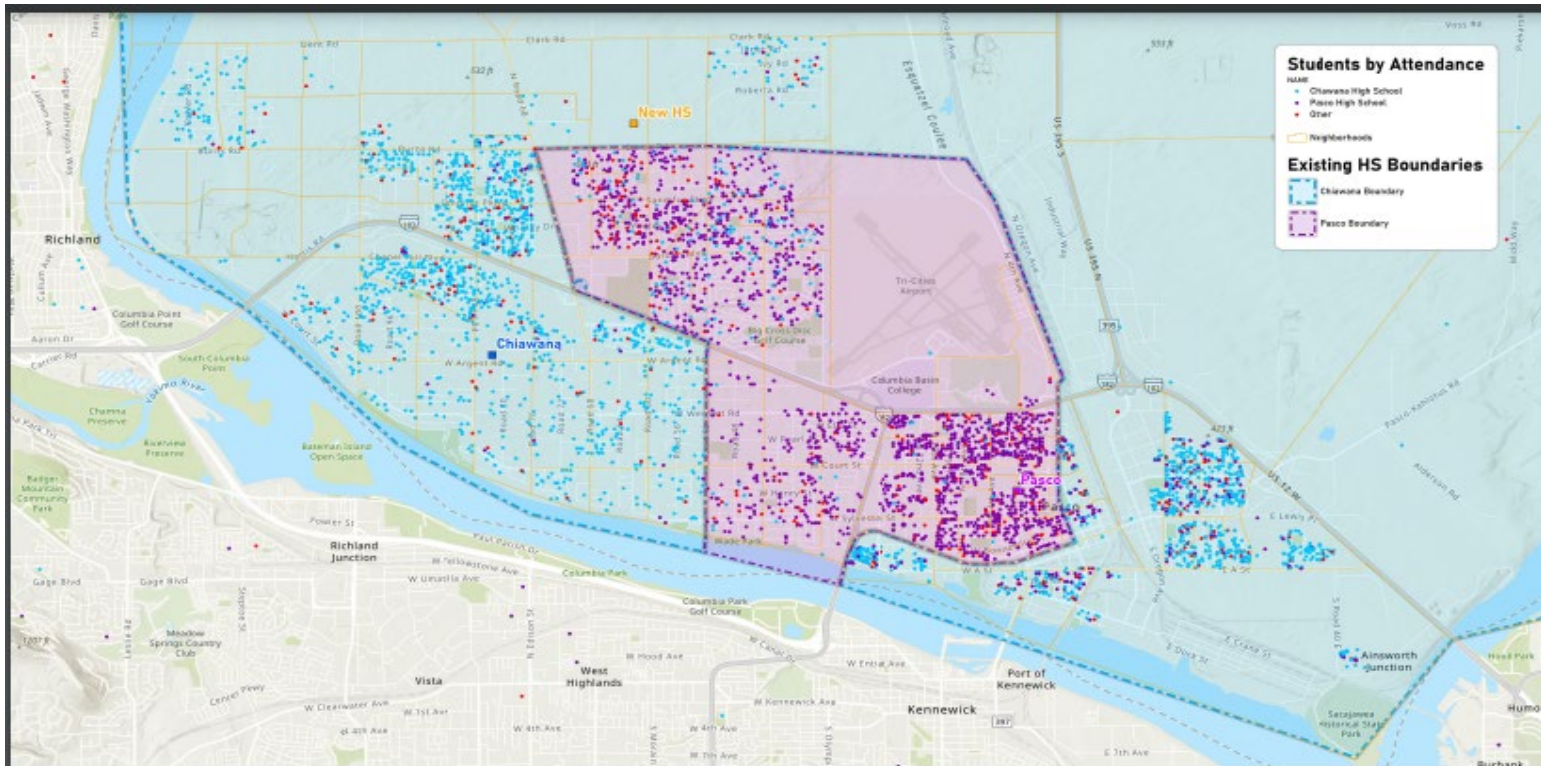


JUB Engineering

December

- Primary Boundary Drafts
 - JUB Engineering team has created an initial set of 6 Boundary Drafts utilizing Pasco School District data. These drafts seek to take into account all Guiding Principles but will focus primarily on the following:
 - Proximity-Travel time
 - Proximity-Straight line distance
 - Feeder School
 - Hybrid Feeder/Proximity
 - Variations to allow for similar size enrollments and demographics

Existing Boundaries and Attendance



EXISTING BOUNDARIES & ATTENDANCE

Pasco School District, 2023

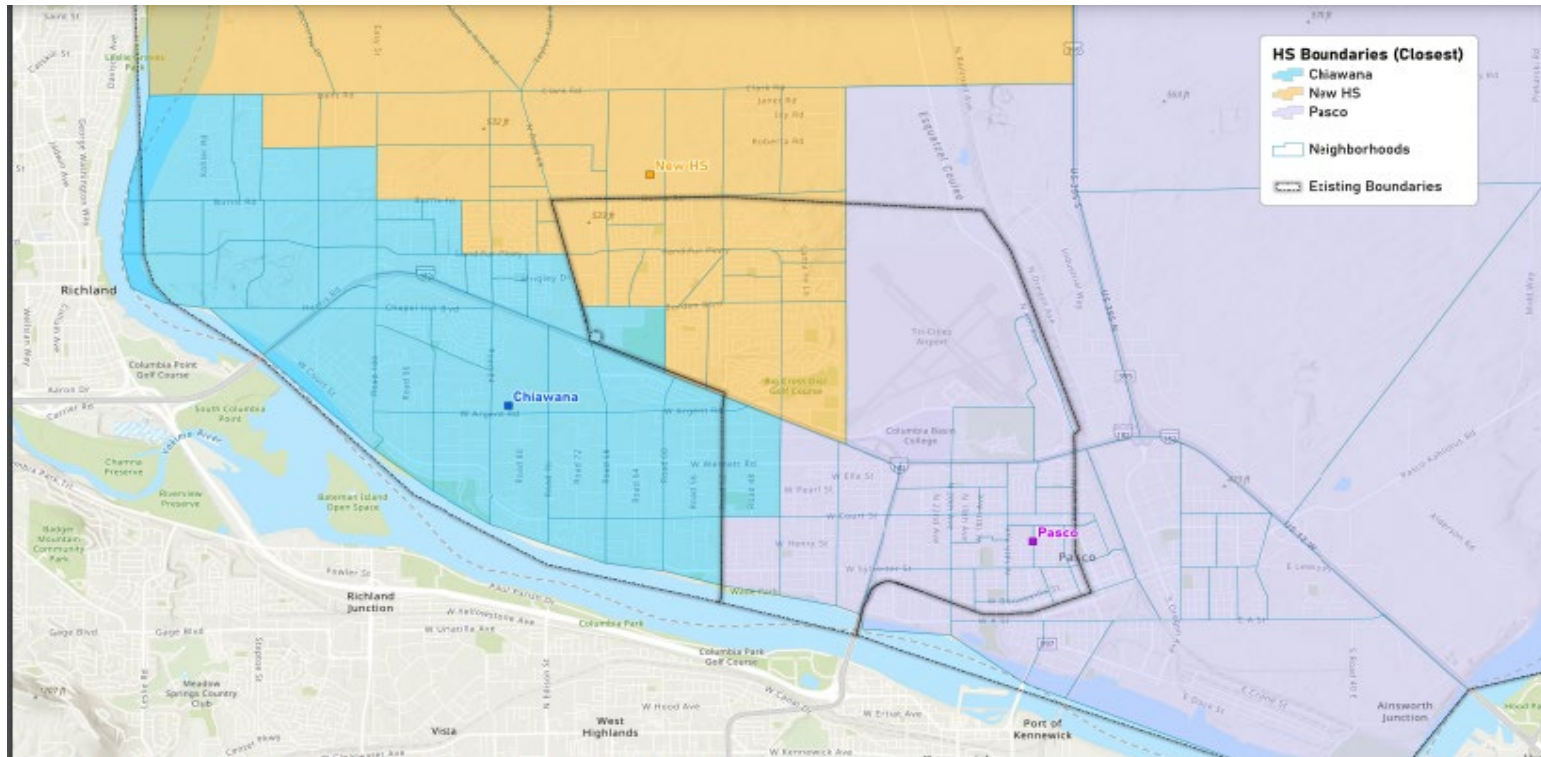


0 0.5 1 2 3 4 5 Miles



THE LARSON GROUP
GATEWAY BUSINESS INC.
OTHER JUB COMPANIES

Scenario 1: Closest Distance



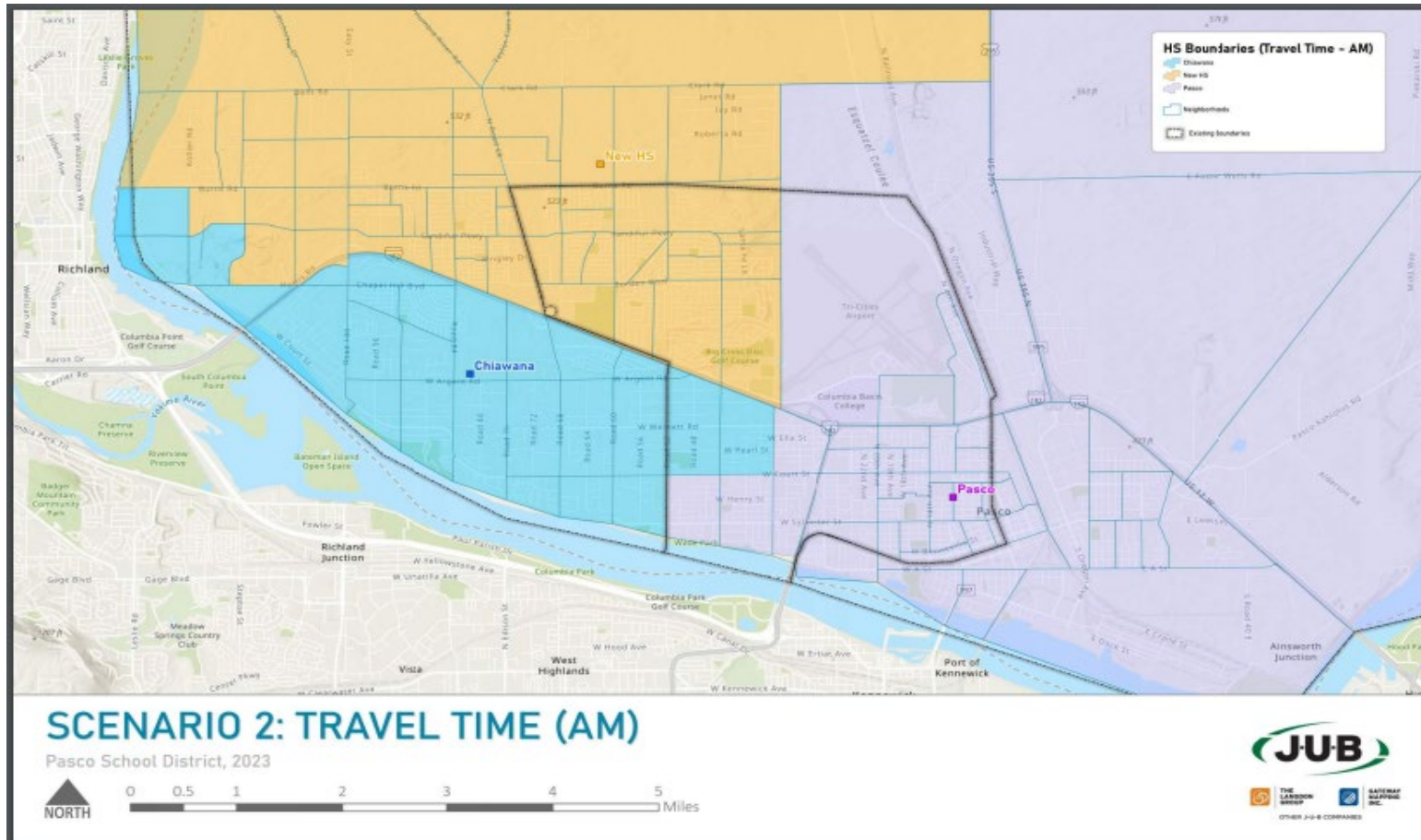
SCENARIO 1: CLOSEST DISTANCE

Pasco School District, 2023

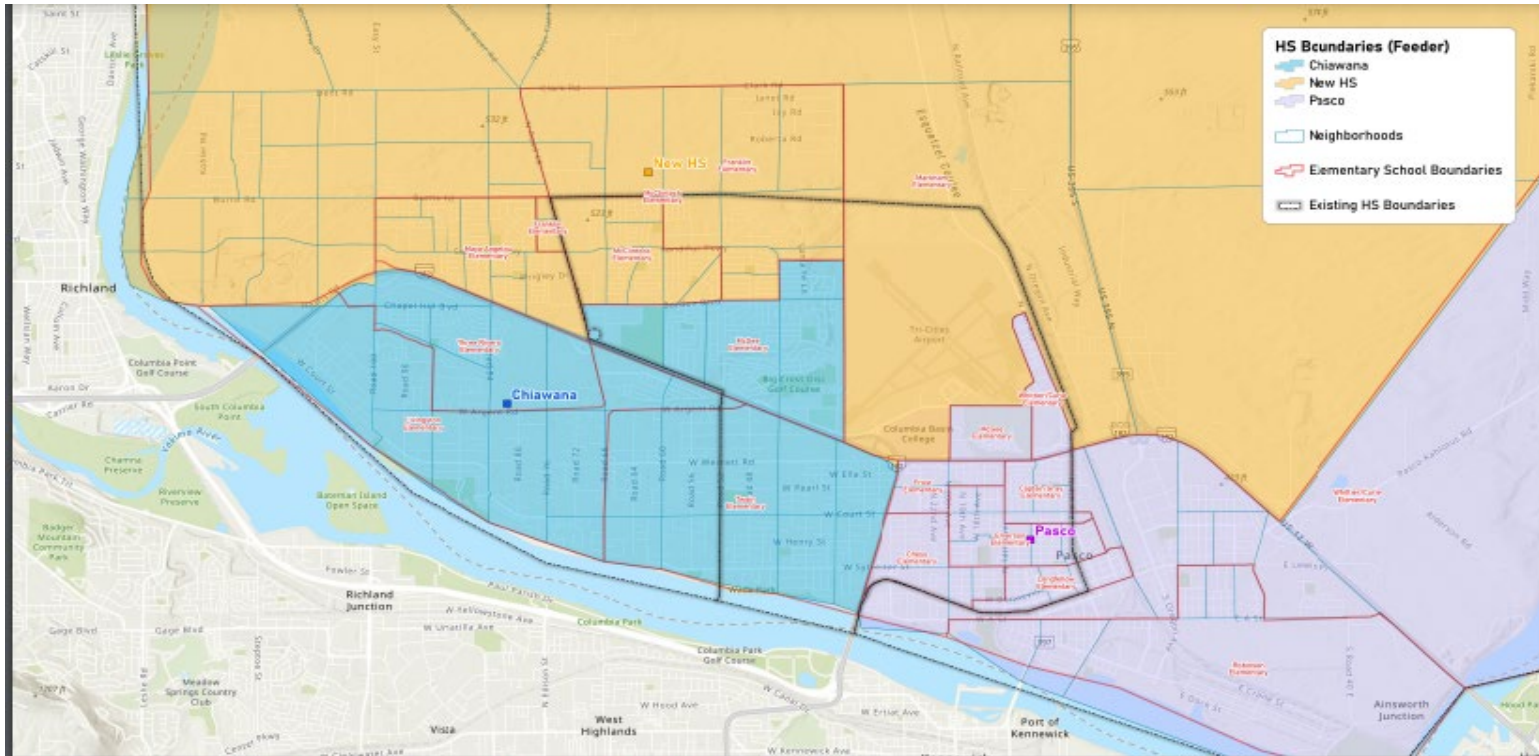


OTHER JUB COMPANIES

Scenario 2: Travel Time



Scenario 3: Middle School Feeder



SCENARIO 3: MIDDLE SCHOOL FEEDER

Pasco School District, 2023

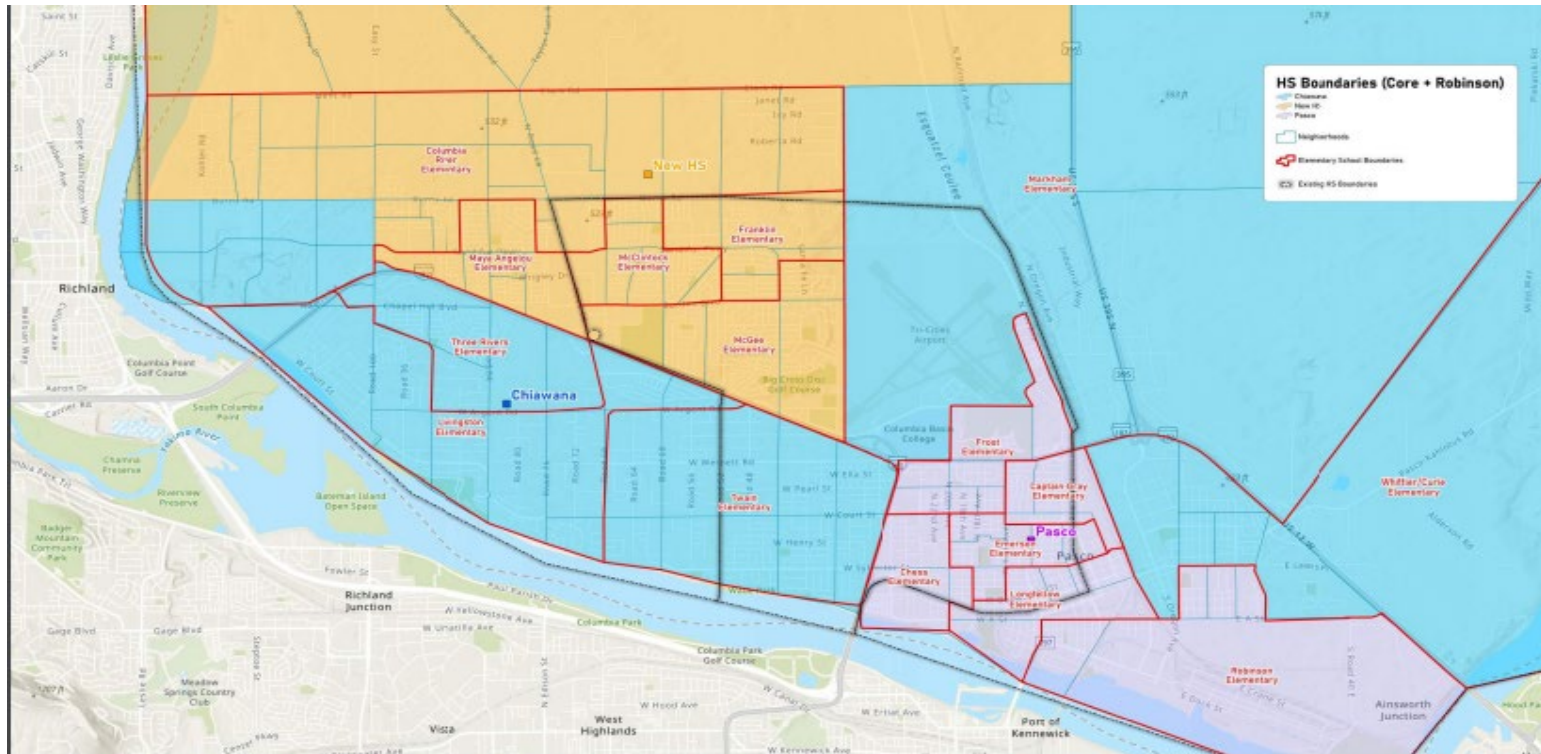


0 0.5 1 2 3 4 5 Miles



THE LARSEN GROUP
GATEWAY REGIONAL INC.
OTHER JUB COMPANIES

Scenario 4: Core + Robinson ES(PHS)



SCENARIO 4: CORE + ROBINSON ES (PASCO HS)

Pasco School District, 2023

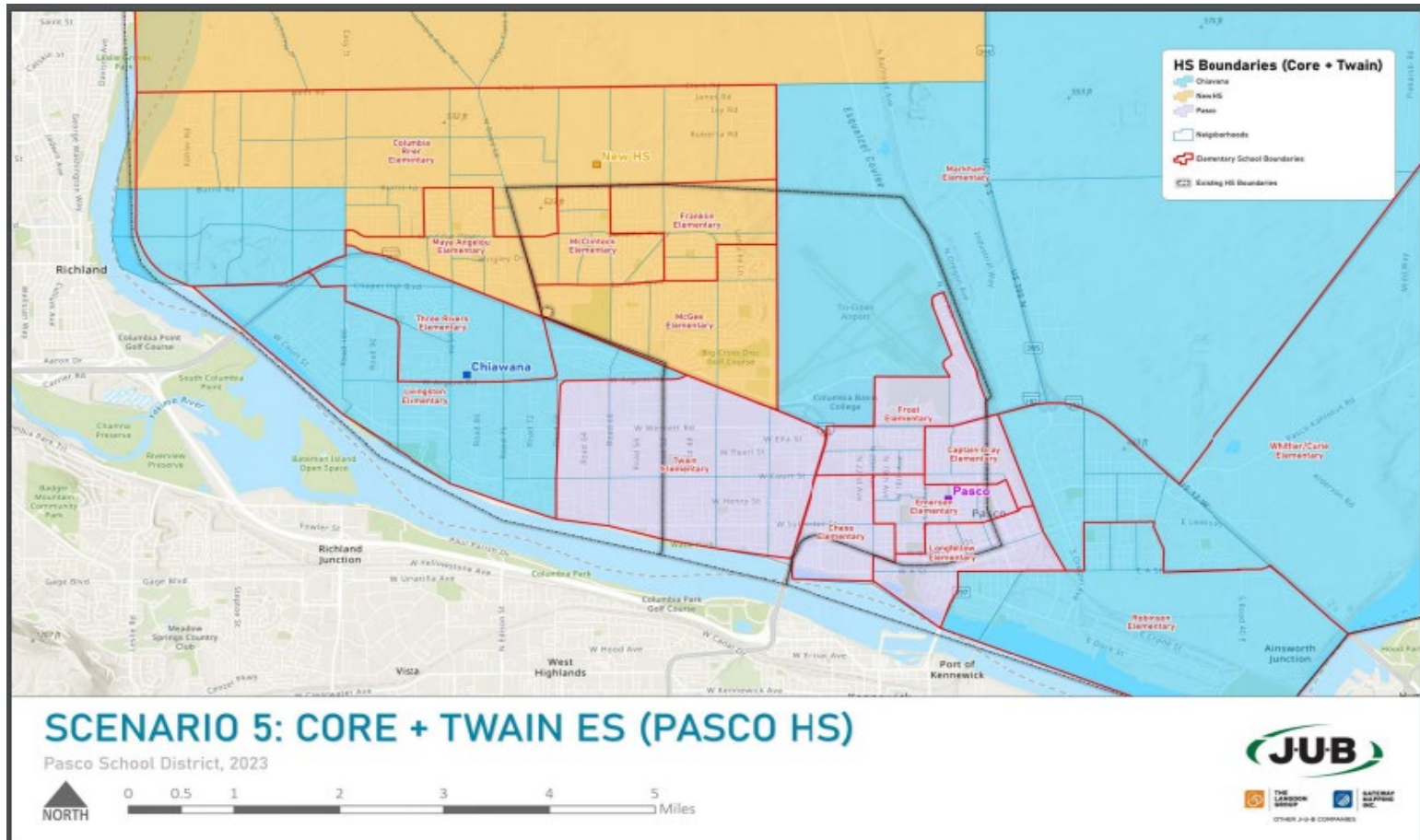


0 0.5 1 2 3 4 5 Miles

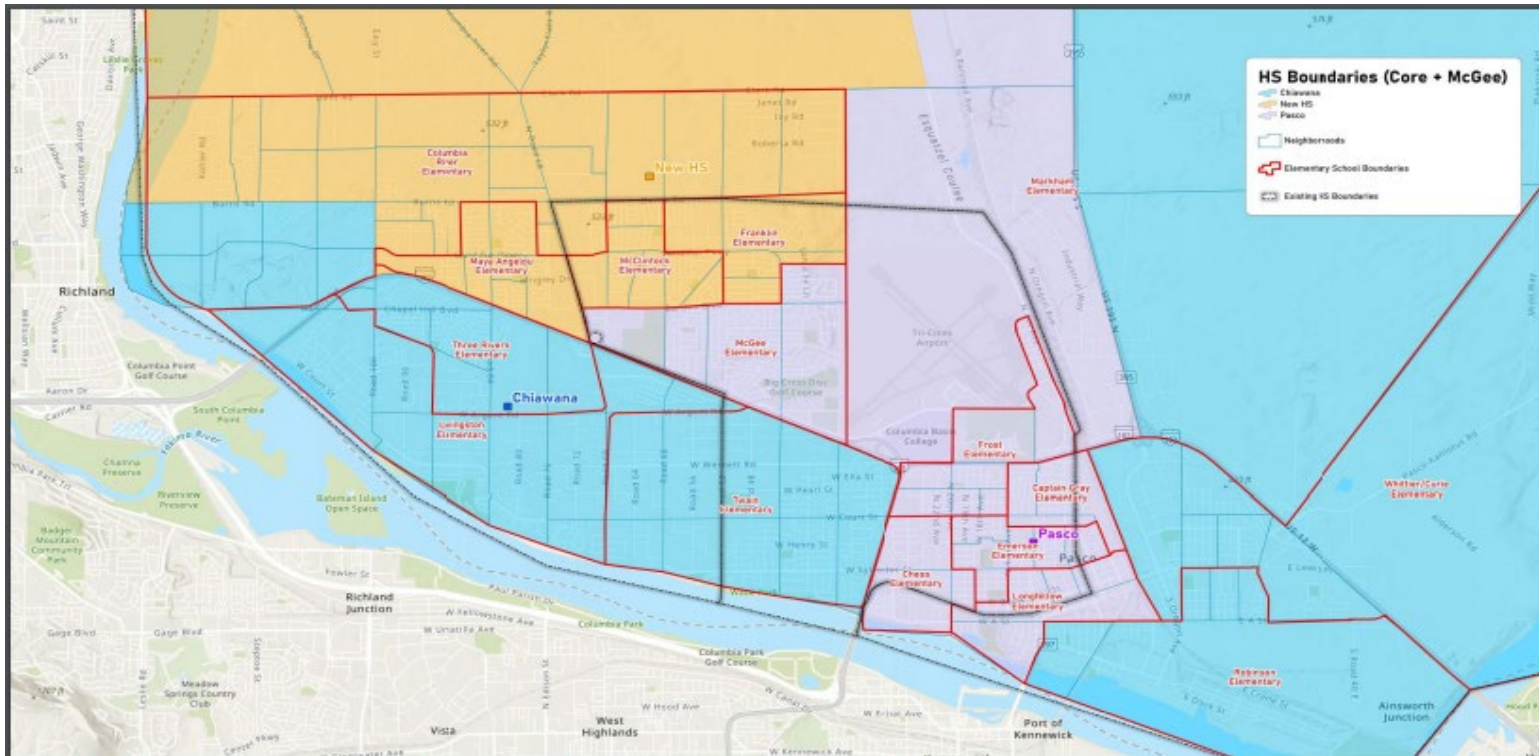


THE LARSEN GROUP
GATEWAY MAPS INC.
OTHER JUB COMPANIES

Scenario 5: Core + Twain ES (PHS)



Scenario 6: Core + McGee ES (PHS)



SCENARIO 6: CORE + MCGEE ES (PASCO HS)

Pasco School District, 2023



0 0.5 1 2 3 4 5 Miles



THE LARSON GROUP
BATTERY
OTHER JUB-B COMPANIES

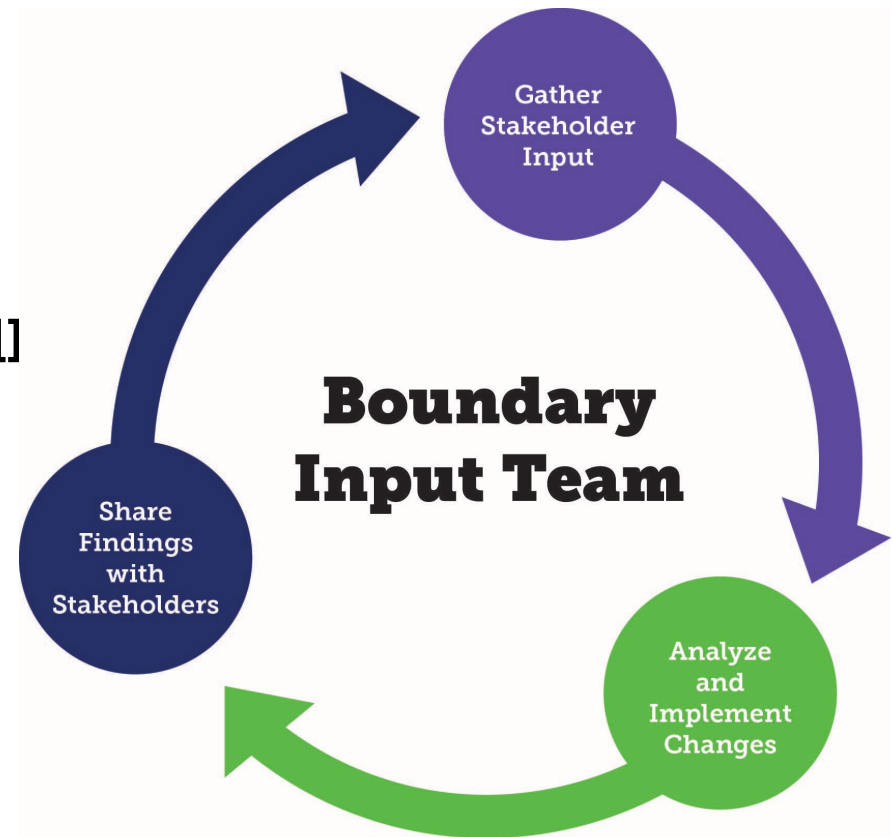
Next Steps

Technical Team

- **December and January**
 - Analyze the data collected by JUB Engineering.
 - Work together with these initial 6 boundary drafts to compose 3 boundary maps.
 - Utilize the Guiding Principles in all work around boundary proposals.
 - Present the final 3 maps for approval and community review to the Pasco School District Board of Directors January 23.

Cycle of Input Process

- January-March
 - Stakeholder meetings will be held to collect input.
 - Boundary proposal will be revised, and another round of stakeholder input meetings will occur.
 - This revision process may take place multiple times.



Next Steps

January – March

- **Community Engagement Events**
 - The Boundary Input Team will finalize initial Boundary Drafts
 - Team will begin to collect feedback on Boundary Drafts in the following ways:
 - Digital/Online Boundary Drafts can be accessed through the PSD Boundary page
 - Stakeholders will be able to provide feedback on all drafts online
 - Physical Boundary Drafts will be presented at 20 Community Engagement events across PSD
 - Stakeholders will be able to provide feedback on all drafts in person

Next Steps

January- March

- **Community Engagement Events**

- **Elementary Events**

- Chess - Jan 22
- Emerson - Jan 23
- Three Rivers - Jan 23
- PDLA- Jan 24
- Livingston - Jan 18
- Longfellow - Jan 25
- Columbia River - Jan 31
- Robinson - Jan 31
- Captain Gray - Feb 6
- Markham - Feb 7
- Frost - Feb 8
- Whittier/Curie - Feb 15
- Maya - Feb 16
- McGee - Feb 21
- Franklin - Mar 4
- McClintock - Mar 12

- **Events open to all PSD Stakeholders**

- Stevens MS - Jan 23
- Ochoa MS - Feb 5
- Ray Reynolds MS - Feb 13
- McLoughlin MS - Mar 5
- Pasco HS - Mar 21
- Chiawana HS - Feb 14

Next Steps: School Board

- **January 23-Board Report**
 - Update on Boundary Input Teamwork
 - Boundary Maps
 - Community Outreach
- **February 27-Board Report**
 - Boundary Revision Update
- **March 26-Board Report**
 - Boundary Revision Update
- **April 23-Study Session**
 - Boundary Revision Presentation



You Belong - Tú Perteneces

