

# DULWICH COLLEGE

FOUNDED 1619



## Accessibility Information

Visitors' Factsheet



## Introduction

---

The College strives to provide a warm welcome to everyone and an equally positive experience to all visitors.

Levels of accessibility vary around the College, depending on the age and nature of each building. This factsheet focuses on the older buildings which may be more challenging for some and the venues which are more commonly used for events.

Sometimes internal access between buildings is via steps. We have therefore produced this factsheet to identify the level-access entrances and to communicate key information. Our staff are more than happy to provide tailored information and encourage visitors with access needs to contact us in advance.

## Getting Here

---

There are two accessible parking bays located in the car park by Reception. In addition, a further two bays located outside the North Cloister and one bay outside the Christison Hall.

Neither North Dulwich or West Dulwich stations are suitable for wheelchair users and East Dulwich station has very restricted access. Herne Hill is wheelchair accessible.

When planning your journey you may find it helpful to contact Transport for All for accessible travel advice on [www.transportforall.org.uk](http://www.transportforall.org.uk)

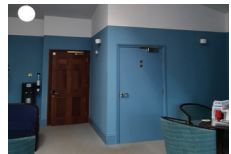
## Reception - Butt Arch

---

All visitors are required to report to Reception for security reasons during working hours. (This does not apply for events which are outside of these times)

There is stepped access at the entrance to Reception. A portable ramp is available on request.

There is an accessible WC within the Reception waiting area. Access to the waiting area requires a portable ramp, also available on request.



## South Block Entrance and Old Reception

---

There is level access at the entrance via glazed doors. Between the entrance and 'Old' Reception there are four steps. A portable ramp is available and there is a bell on the wall to call for assistance. We advise wheelchair users to kindly let us know when they are coming so that we can make the most suitable and comfortable arrangements in advance. There is an accessible WC between 'Old' and the South Cloister.

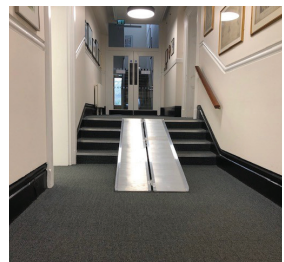


## The Master's Office

---

From 'Old' Reception, there are another four steps up to the Master's Study. A portable ramp is available on request but this is steeper than usually recommended.

A visitor with mobility impairments may be more comfortable meeting the Master in a more accessible and convenient location and for that reason please advise us in advance of any access needs.



## The Barry Buildings

---

The Barry Buildings are the iconic historic buildings, comprised of North, Centre and South Blocks, connected by the North and South Cloisters. The Lower Hall and Great Hall are in the Centre Block. Once inside, there are steps from the South and North Cloisters into the Lower Hall. The Centre Block and Cloisters each have their own accessible entrance and visitors requiring a level access route between buildings will need to go outside and re-enter via another entrance.

This is signed on the map and staff will be able to guide you.

### South Cloister

---

This area is routinely accessed from 'Old' Reception down one step. Level access is available via the door at the opposite end from 'Old' Reception on the same side of the building (adjacent to the Centre Block). If guests particularly require internal access from the South Cloister to the accessible WC a portable ramp is available on request. Please note there is a non-slip mat in place.

There are six steps between the South Cloister and the adjoining Lower Hall. For a level access route, use the opposite door (on the east, College Road side) and once outside turn left in the car park for the Lower Hall entrance.





## Lower Hall

---

There are two steps at this entrance on the College Road side. There are two small ramps provided for wheelchair users. Drinks Receptions and exhibitions are frequently held in the Lower Hall. Once inside, this area is level. There are, however, three steps to access the upper landing and lift to the Great Hall. We have a portable ramp available for use with assistance. Please note this does not have a handrail.



## Great Hall

---

The Great Hall is upstairs via a large sweeping staircase. There is a small passenger lift suitable for one wheelchair user who must be accompanied for safety reasons. This measures (75 x 160 cm).

This large hall is used for receptions and conferences. An induction loop and PA system is in place.

The main stage is accessed via six steps, not accessible to wheelchairs. There is a smaller stage (dais) on the opposite side of the hall and a ramp is available for wheelchair users. If a dais and ramp are required seating can be reconfigured, so please let us know if this is preferable. There is a toilet available on this floor which can be used. It is not an accessible toilet and measures 72cm door width.

## North Cloister

---

Level access into the North Cloister mirrors that of the South Cloister, on the same side of the College as 'Old' Reception.

## Old Library

---

There is one step to the main entrance.

There is also an alternative ramped entrance: please follow the path round to the right.

An accessible WC is located inside.

Please note that inside the Library, the doorways are approx 70 cm wide.



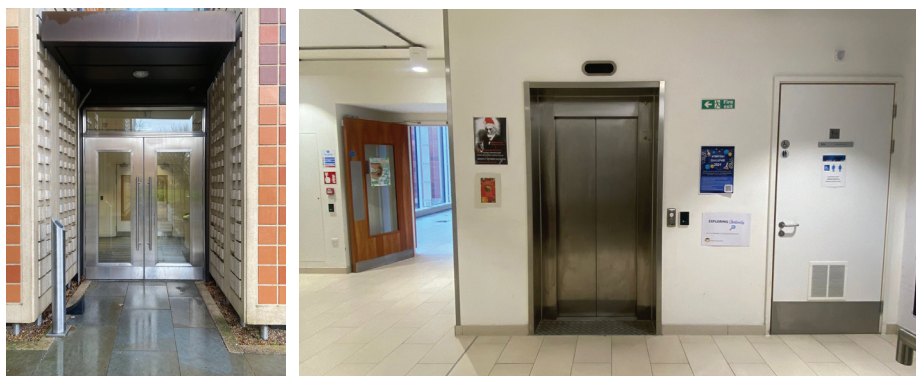
## The Laboratory

---

This building has level access at both entrances.

There is an accessible passenger lift suitable for a wheelchair user and there are refuge points on both the 1st and 2nd floors. An accessible WC is located on each of the 3 floors adjacent to the lift.

This building is often used for events including dinners, lunches, receptions and conferences.



## Ned's Place

---

Some events include access to our café. This is located on the ground floor of the Lord George building which is a modern building. Staff are always happy to provide assistance. There is an accessible WC on the ground floor and a lift to the upstairs area.



## Christison Hall (Dining Hall)

---

This building is often used for exhibitions, fairs, dinners, lunches, parties and receptions.

There is both ramped and stepped access at the entrance with sensoractivated automatic doors.

The ground floor is entirely flat but note that the stage at the back is stepped access only. The first floor of the Hall is accessed via one flight of stairs. Please note the steps are 'open risers' and so visually-impaired visitors may require assistance. There is no lift access.



## Edward Alleyn Theatre

---

This building has both stepped and ramped access to the entrance.

There is an accessible WC within the foyer and an induction loop available.

Seating in the theatre is flexible and configured to the organiser's specification so please advise staff of any access requirements when booking so that appropriate arrangements can be made.



## Pavilion Salle

---

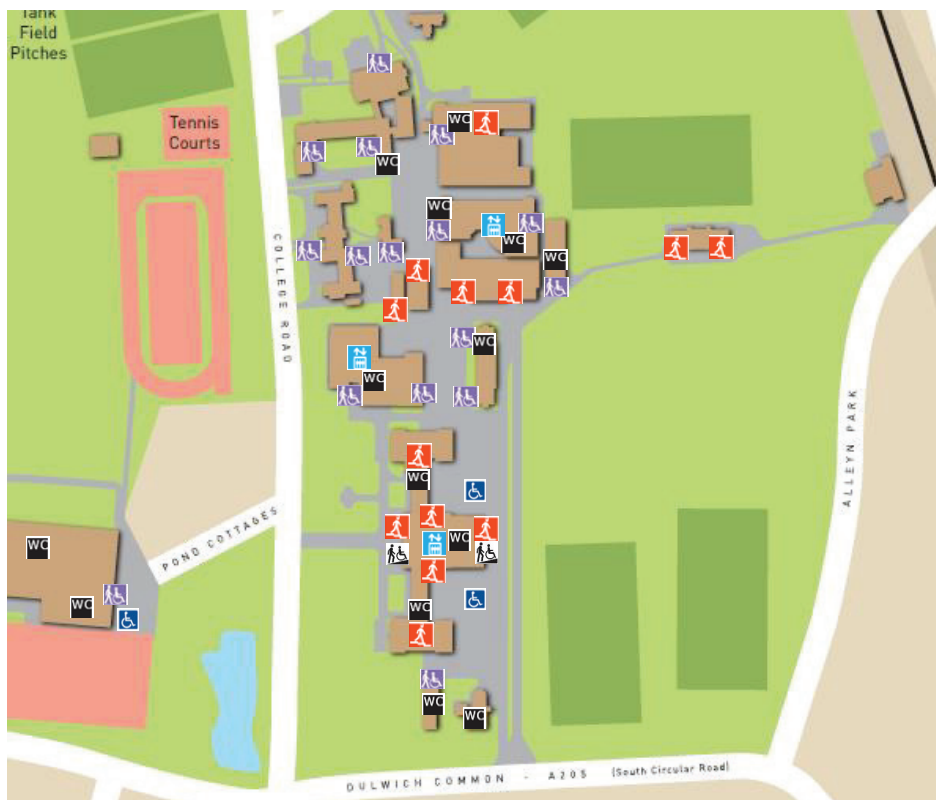
Events are often held on the first floor of the building and the bar is situated upstairs. Please note that this building has no level access, nor lift access upstairs.







The wheelchair stair climber can be requested from the Site Officer team. It can operate on most staircases around the campus.



## Key


 Disabled Parking

 Stepped Access

 Accessible WC

 Level Access Entrance

 Lift (Staff Assistance required)

 Ramp Access (On request)



Dulwich College

Dulwich Common, London, SE21 7LD

Telephone: 020 8693 3601 Fax: 020 8693 6319

Email: [enquiries@dulwich.org.uk](mailto:enquiries@dulwich.org.uk) Web: [www.dulwich.org.uk](http://www.dulwich.org.uk)

Registered Charity No 1150064