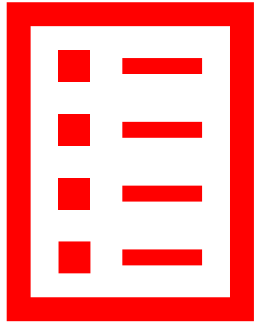


WILLIAMSVILLE CENTRAL SCHOOL DISTRICT

SPECIAL BOARD MEETING PRESENTATION
August 21, 2020



PRESENTED BY:
DR. SCOTT G. MARTZLOFF
SUPERINTENDENT OF SCHOOLS



DISTRICT PRIORITIES

- ▶ Health and safety
- ▶ Communication with all community stakeholders
- ▶ Defining our “new normal”
- ▶ Define new changes to our school reopening plan

CHANGES TO OUR DISTRICT PLAN

- ▶ BOCES will not be used as an online education provider
- ▶ Due date for parents to select full online instruction changed to Wednesday, August 26, 2020
- ▶ Elementary school students in the hybrid instructional model will not have online instruction on the two days they are not physically in school

LEAVE AND ACCOMMODATION REQUESTS

▶ Guiding Principles

- ▶ All employees in all 7 bargaining units have access to what the law provides and what is specified in your contract
- ▶ Each request will be reviewed on a case-by-case basis using three pathways:
 - ▶ Contract
 - ▶ Medical documentation
 - ▶ Law

LEAVE AND ACCOMMODATION REQUESTS

- ▶ Contractual Leaves (7 bargaining units)
 - ▶ Short term/long term
 - ▶ Paid/unpaid
 - ▶ Employees are not eligible for health insurance on an extended unpaid leave of absence
 - ▶ Child care
 - ▶ Special purposes/extenuating circumstances
 - ▶ Each contract is different
 - ▶ Review your contract

LEAVE AND ACCOMMODATION REQUESTS

- ▶ Medical Documentation
 - ▶ Each situation is unique
 - ▶ Spectrum of severity
 - ▶ Provide detailed documentation
 - ▶ The District will work with medical professionals to help determine eligibility
 - ▶ The District has developed a “Physician Questionnaire” to be filled out if there is a request for accommodations

LEAVE AND ACCOMMODATION REQUESTS

- ▶ Law Regarding Leave and Accommodation
 - ▶ New COVID-19 Federal and State laws
 - ▶ Families First Coronavirus Response Act (FFCRA)
 - ▶ Emergency Paid Sick Leave Act (ESPLA) - 10 days (80 hours)
 - ▶ Emergency Family and Medical Leave Expansion Act (EFMLA) - 12 weeks
 - ▶ Family Medical Leave Act (FMLA)
 - ▶ Americans with Disabilities Act (ADA)

LEAVE AND ACCOMMODATION REQUESTS

- ▶ Americans with Disabilities Act (ADA)
 - ▶ Requires employers to provide reasonable accommodations
 - ▶ Submit your specific request
 - ▶ Submit “Physician Questionnaire” - ADA Request
 - ▶ Related to COVID-19 form
 - ▶ Submit additional medical documentation as needed
 - ▶ District engages in the “interactive process”
 - ▶ You’ll be notified ASAP

LEAVE AND ACCOMMODATION REQUESTS

- ▶ New York State COVID-19 Legislation
- ▶ Family First Coronavirus Response Act (FFCRA)
 - ▶ Emergency Paid Sick Leave Act (EPSL)
 - ▶ Emergency Family and Medical Leave Expansion Action (EFMLA)

LEAVE AND ACCOMMODATION REQUESTS

▶ New York State COVID-19 Legislation

- ▶ Up to 14 calendar days of full paid leave due to a mandatory or precautionary order of quarantine or isolation
- ▶ Taken without loss to employee accruals
- ▶ Does not apply to voluntary travel to states with significant community spread of COVID-19

LEAVE AND ACCOMMODATION REQUESTS

- ▶ Family First Coronavirus Response Act (FFCRA)
 - ▶ Emergency Paid Sick Leave Act (EPSL)
 - ▶ Can take up to 10 days (max 80 hours) of paid sick leave
 - ▶ Generally full pay for your own medical condition subject to maximums and daily caps
 - ▶ Two-thirds pay to take care of family members

LEAVE AND ACCOMMODATION REQUESTS

- ▶ Family First Coronavirus Response Act (FFCRA)
 - ▶ Emergency Family and Medical Leave Expansion Action (EFMLA)
 - ▶ Must have worked 30 days in the District
 - ▶ Up to 12 weeks of leave to care for a child whose school or day care is closed
 - ▶ Part-time employees are eligible

HUMAN RESOURCES

- ▶ Human Resources has developed a process and forms to request leaves and accommodations
- ▶ Dr. John McKenna, Assistant Superintendent for Human Resources
 - ▶ E-mail: jmckenna@williamsvillek12.org
 - ▶ Phone: 626-8051
- ▶ Ms. Moira “Molly” Cooper, Labor Relations Specialist
 - ▶ E-mail: mcooper@williamsvillek12.org
 - ▶ Phone: 626-8050



HEALTH AND SAFETY

- ▶ School based COVID-19 Testing
- ▶ Face coverings
- ▶ Daily health screenings
 - ▶ Temperature check
 - ▶ COVID-19 questionnaire
- ▶ Social distancing
- ▶ Air Ventilation
- ▶ Transportation
- ▶ Child Nutrition



HEALTH AND SAFETY

▶ School based COVID-19 Testing

- ▶ As per Dr. Howard Zucker, New York State Department of Health, it is not recommended that asymptomatic children or teachers be tested for the re-entry into school
- ▶ Testing every student prior to attending in the fall or on a particular schedule is not feasible per Dr. Zucker
- ▶ NYSED School Reopening Guidance
 - ▶ Page 41 - Schools are to comply with CDC guidance and not conduct COVID-19 Testing
 - ▶ Decisions to test should be determined by health care providers and local DOH

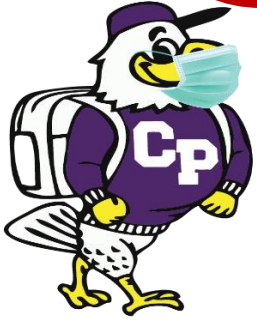


FACE COVERINGS





FACE COVERINGS





FACE COVERINGS

- ▶ Face coverings are **REQUIRED**
- ▶ We strongly encourage parents to have children practice properly wearing a mask for extended periods of time (i.e. length of school day)

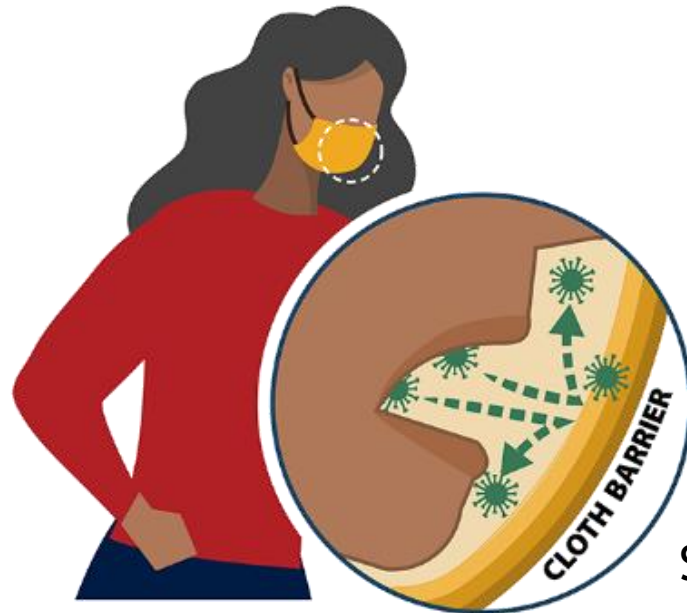


Source: CDC



FACE COVERINGS

- ▶ What is an appropriate face covering?
 - ▶ Cloth covering that fits properly and covers the nose and mouth



Source: CDC



FACE COVERINGS





FACE COVERINGS

- ▶ Scheduled Mask Breaks
 - ▶ NYSED recommends mask breaks but does not define parameters
 - ▶ CDC and DOH recommend masks need to be worn as much as possible throughout the school day for optimal health and safety
 - ▶ School sanctioned 5 minute intervals at the start of a new subject area or transition into new activity (max 6 per day)
 - ▶ 6-feet of distancing must be maintained between individuals
 - ▶ During meals
 - ▶ We strongly encourage parents to have children practice properly wearing a mask for extended periods of time (i.e. length of school day)



DAILY HEALTH SCREENINGS

- ▶ Temperature and COVID-19 health screenings to be completed by staff before they leave for school daily and reported to the District
- ▶ As an additional safety precaution, the District has purchased touchless thermal scanners to re-check temperatures as staff enter the building



TEMPERATURE SCREENINGS



- ▶ FDA compliant
- ▶ Accurate infrared thermal scanner
- ▶ Non-contact
- ▶ Temperature reading takes less than one (1) second



AIR VENTILATION

- ▶ Classrooms use air ventilators that draw fresh air in from the outside
- ▶ This air is filtered by the unit to remove dust, pollen and other allergens
- ▶ The units are not intended to provide enhanced filtration
- ▶ Any attempt to install higher level filtration will only reduce air flow



AIR VENTILATION

- ▶ Adding a higher MERV filter will reduce air flow
- ▶ All guidance from the WHO, CDC, and other agencies recommend increasing air flow to flush out the virus
- ▶ With a 50% occupancy in the classroom you will have more than twice the code mandated ventilation/air flow
- ▶ More information from the District's Architect/Engineer on the school's ventilation system is posted under the "Reopening Information" tab on the District's website



CLEANING PROTOCOL

- ▶ The District is using CDC COVID-19 approved cleaning supplies. These are different from what we were using and Safety Data Sheets (SDS) are available at every school office
- ▶ Daily Cleaning
 - ▶ High touch areas are cleaned and disinfected several times during a school day (i.e. classroom door handles, lavatory fixtures, hand rails on stairs)
- ▶ Deep Cleaning
 - ▶ Deep cleaning occurs every weeknight and includes classroom desktops and high touch areas in a classroom (door handles, faucets, countertops, light switches)
 - ▶ Cleaning supplies will be provided to each classroom for the cleaning of keyboards



TRANSPORTATION

- ▶ Masks are **REQUIRED** to be worn on the bus
 - ▶ If a student does not have a mask on at the bus stop, the bus driver will provide one to the student to wear on the bus





SOCIAL DISTANCING

- ▶ 6-feet of distance as defined by New York State Department of Health and New York State Education Department



6-feet apart





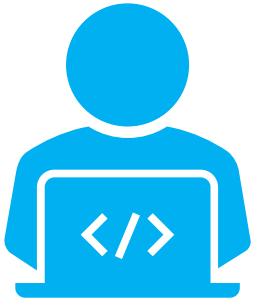
SOCIAL DISTANCING

- ▶ Polycarbonate Barriers/Dividers (not plexiglass)
 - ▶ Social distancing of 6-feet is a requirement, polycarbonate dividers are not a substitute
 - ▶ When social distancing of 6-feet is unattainable polycarbonate barriers/dividers are a consideration and data is limited on effectiveness



CHILD NUTRITION

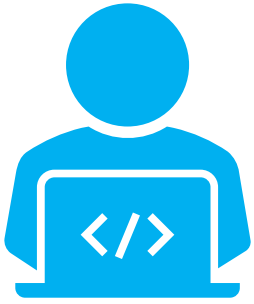
- ▶ The District will utilize appropriate methods per the NYSED and DOH for meal preparation and student spacing for meal consumption (Per COVID-19)
- ▶ Each school is creating an individual plan for eating lunch for students with food allergies
- ▶ Preferred meal locations are cafeterias
- ▶ Alternate meal locations are school dependent and include gyms and classrooms
- ▶ Cash transactions are strongly discouraged



CONTINUITY OF INSTRUCTION

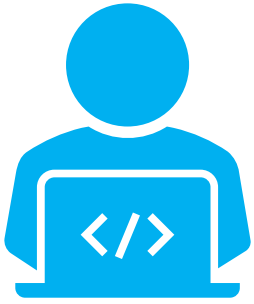
- ▶ Laptops with cameras and microphones will be placed in each teacher's classroom to allow students to receive instruction five days a week in grades 5-12





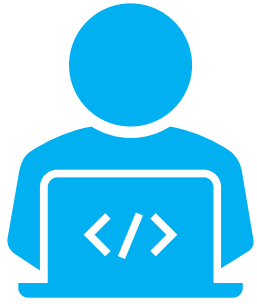
CONTINUITY OF INSTRUCTION

- ▶ Why the change?
 - ▶ Allows for transition between current hybrid and remote models
 - ▶ Maintains focus on in-person learning at the elementary school level
 - ▶ All classes/courses are available and accessible to all students regardless of the instructional model (hybrid or remote)
 - ▶ Allows virtual students to take Advanced Placement (high school) and electives (middle and high school)
 - ▶ All students follow their established schedule
 - ▶ It's a regular school day for students
 - ▶ Assures access to LIVE instruction provided by the teacher and direct connection of students to their class in real time as it is occurring



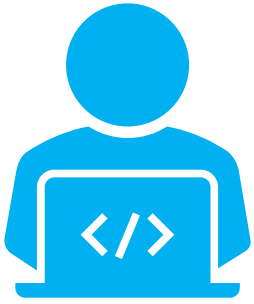
CONTINUITY OF INSTRUCTION

- ▶ Instructional Model assures 180 days of instruction
 - ▶ Teachers are required to take attendance daily
 - ▶ In-person and online schedules for students are the same at the middle and high school level
 - ▶ Students follow the established daily/weekly schedule



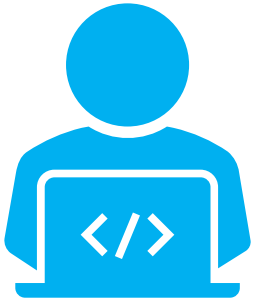
CONTINUITY OF INSTRUCTION

- ▶ Field trips and large gatherings (i.e. school concerts) are currently canceled due to the health and safety guidelines the District is following
- ▶ Open house information will be shared virtually by each school



CONTINUITY OF INSTRUCTION

- ▶ Individual Education Plans (IEP) & 504 Plans
 - ▶ Will be followed as best as possible with services and supports being provided face-to-face and digitally
 - ▶ Schedules with related service providers are being produced and modifications will be provided with principal or service provider recommendation
 - ▶ Any specific requests regarding the delivery of services need to be addressed to the building principal and related service provider



CONTINUITY OF INSTRUCTION

- ▶ Office of Exceptional Education & Student Services
 - ▶ Phone: 716-626-8061
 - ▶ Community Forum for IEP & 504 Plans (Zoom Webinar)
 - ▶ Monday, August 24, 2020 at 6 p.m.

WILLIAMSVILLE CENTRAL SCHOOL DISTRICT

SPECIAL BOARD MEETING PRESENTATION
August 21, 2020



PRESENTED BY:
DR. SCOTT G. MARTZLOFF
SUPERINTENDENT OF SCHOOLS