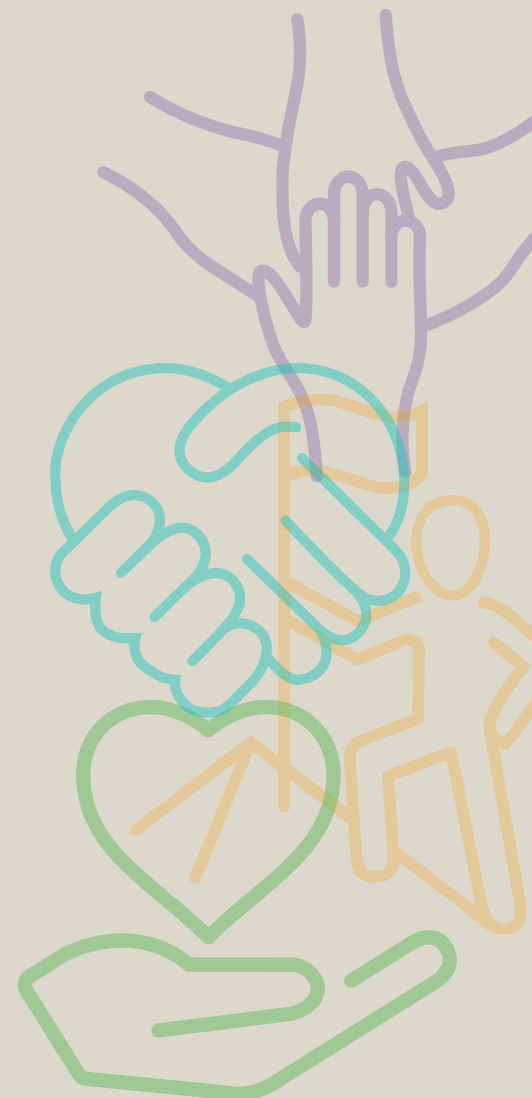




International
School of London
Qatar

STRATEGIC PLAN

V1 2023





Dear ISL Qatar Community,

I am delighted to announce the publication of our school's new Strategic Plan. This plan is not just a document; it's a roadmap that will guide us on our journey towards excellence in education.

This plan represents our unwavering commitment to providing the best learning experience, a dedication to nurturing our students academically and holistically. For the wider community, it shows our commitment to a more sustainable and fair future.

We are excited for our future and what this plan means for our students, parents, staff, and the wider community.

Yours in partnership,
Sean Areias, Ed.D.
Head of School, ISL Qatar

Facts & Figures



Established in
2008.



218 Staff representing
over 50 nationalities.



1168 students from
over **80** countries.



12 languages taught
through our Mother
Tongue Programmes.

Mission

Empowering learners to lead through compassion, collaboration, creativity and critical thinking.

Vision

Imagining and designing a better world together.

Core values



BELONGING

We value diversity, inclusivity, and individual perspective, promoting acceptance and appreciation.



INTEGRITY

We try our best to be honest and to do what is right.



GRIT

We foster passion, perseverance and a growth mindset to overcome challenges and meet our goals.



KINDNESS

We promote empathy, compassion, and respect to foster a caring community.

Definition of Learning

Learning at ISL Qatar is a joyful, dynamic process of discovery, inspiring innovation and transformation, whereby learners connect and engage purposefully with the world.

STRATEGIC GOAL 1

ISL Qatar will enhance inclusive, personalized and equitable learning for all.

1.1

ISL Qatar commits to continuously **improving**, aligning, documenting, and publishing its **curricula**.



1.3

ISL Qatar commits to fostering a learning environment that empowers learners to take charge of their education, encouraging **autonomy** and **active engagement** within their learning experiences.

1.4

ISL Qatar commits to providing a **positive and safe learning environment** that focuses on social-emotional learning and pastoral care, promoting positive behavior and healthy relationships, with continuous improvement and reinforcement.

1.6

ISL Qatar commits to prioritizing best practices in giving specific, timely, and constructive **feedback** to learners to **enhance** their **learning outcomes**.



1.2

ISL Qatar commits to improving the implementation of inclusive teaching practices, ensuring that all learners have **access to learning opportunities**, and feel valued and understood as individuals.



1.5

ISL Qatar commits to ensuring smooth **transitions** across specific **stages of learning** using effective transition protocols.

1.7

ISL Qatar commits to enhancing the **professional growth of our staff**, with the implementation of a new professional growth and evaluation plans linked to SMART goals, performance data, and the school's strategic plan.

STRATEGIC GOAL 2

ISL Qatar will build meaningful relationships to enrich its community.

2.1

At ISL Qatar we will create a future where communication knows no boundaries, where every voice is heard, and where the spirit of collaboration is possible through **effective communication systems**.



2.2

ISL Qatar aims to **deepen community relationships** through a diverse range of activities, events, and initiatives that encourage active participation and engagement.

2.3

Through our **Alumni Programme**, ISL Qatar invites students back into our vibrant community, where they will find a dedicated space to reconnect, share their success **stories**, and relive cherished memories.

2.4

ISL Qatar is embarking on a transformative journey of collaboration, forging **local and international partnerships** both commercial and academic, to fulfil our school's mission and vision.



2.5

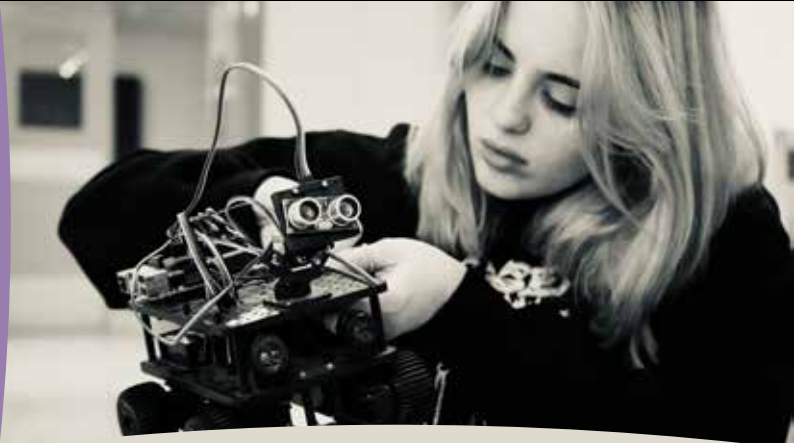
At ISL Qatar, every voice matters, and our cherished **parents** play a critical role in the journey of their child's education. Our **PSA** will provide a forum of collaboration, engagement and inspiration.

STRATEGIC GOAL 3

ISL Qatar will ensure the optimal use of spaces and resources to support its evolving programmes and the needs of the community.

3.1

ISL Qatar strives to successfully implement all learning-related tech audit recommendations, accompanied by comprehensive documentation of the alignment between the **technology integration plan**, assessment and reporting.



3.2

ISL Qatar undertakes to develop and implement infrastructure and **professional learning strategies** that foster the seamless progression of technology, while also incorporating pertinent tech audit suggestions.

3.3

ISL Qatar aims to have clear and comprehensive tech policies and procedures in place to ensure the **effective use of technology**.



3.4

ISL Qatar commits to creating a facilities **master plan** that aligns with the school's **long-term financial plan**.



3.5

ISL Qatar commits to allocating funds for creating developmentally appropriate **recreational spaces** for all students.

3.6

ISL Qatar aims to introduce a timetable structure that maximizes the efficient use of **learning time and spaces**.

STRATEGIC GOAL 4

ISL Qatar will ensure long-term success and growth through effective governance, proactive financial planning and sustainable leadership development.



4.1

ISL Qatar commits to continuing to enhance its **governance** and legal practices to ensure responsible and innovative planning for sustainable growth and future-focused education.



4.2

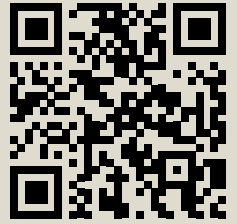
ISL Qatar commits to developing a new long-term **financial plan** to optimize the school's growth and success.



4.3

ISL Qatar will implement a **leadership development** and succession plan that promotes exceptional operational performance and continuity.

**Contact
us!**



THIS IS US!



International
School of London
Qatar

