



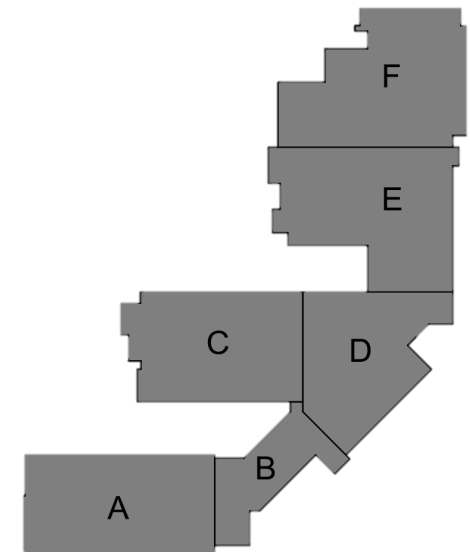
Mary E. Britton Middle School

➤ Completed Work:

- Complete ICF at Cafeteria and Area C
- Start ICF Area D and End Wall Area A
- Continue Steel Erection at Area E (Cafeteria)
- Complete CMU at Stage Area for Hollow Core Plank Set-out
- Domestic Water to Vault
- Install Temporary Heating at Area A
- Prep Topping Slab At Area C
- Continue Zone Piping at Geothermal Field
- Continue rough-in of Sprinkler and MEP scopes
- Install Roofing system and curbs at Kitchen/Mechanical room

➤ Upcoming Work/Look Ahead:

- Complete ICF Area A/C Entrance Walls
- Set Stala Frames in Area D
- ICF in Area D
- Place Topping Slab Area A Platform (12.11.23)
- Continue Roof Steel Area A and C
- Continue Roof Steel at Cafeteria
- Set remaining Hollow Core (12.7.23)
- Metal Stud Framing at Area F Platform
- CMU at Area B and D second floor corridor wall
- Prep Topping Slab Area C
- MEP and Sprinkler following hollow core set out
- Continue Domestic Water/Fire Line
- Continue Site Sanitary





Mary E. Britton Middle School

Area A – Interior Soffit Framing has begun



Week Ending December 8, 2023

Mary E. Britton Middle School



Area B – 2nd Floor CMU Continues



Week Ending December 8, 2023

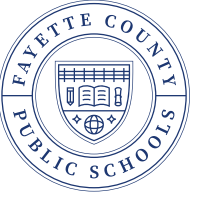
Mary E. Britton Middle School

Area B – Front Entry Stala Frames Installed

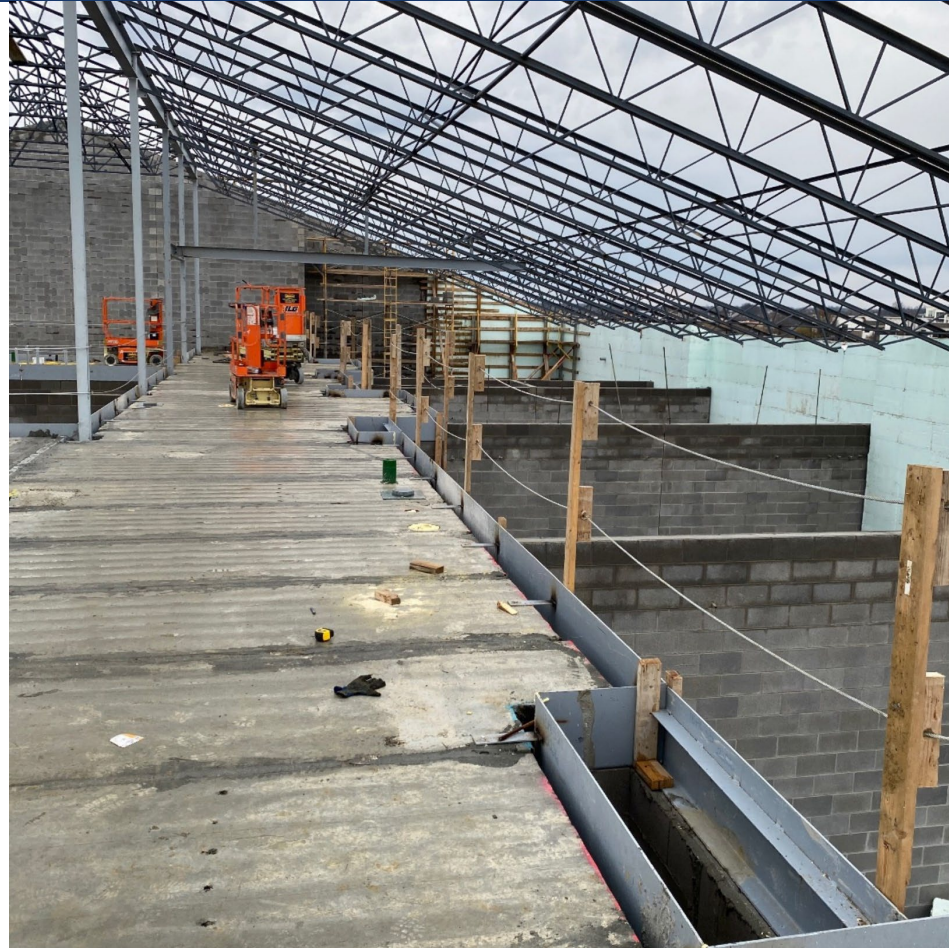


Week Ending December 8, 2023

Mary E. Britton Middle School



Area C – Hollow Core and Edge Steel Installed



Week Ending December 8, 2023

Mary E. Britton Middle School



Area C – Stair Stala Frame going in



Week Ending December 8, 2023

Mary E. Britton Middle School



Area E – Kitchen Roof Decking Installed



Week Ending December 8, 2023

Mary E. Britton Middle School

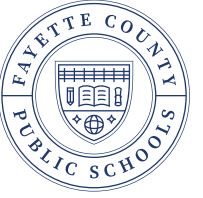


Area E – Storm Shelter Platform



Week Ending December 8, 2023

Mary E. Britton Middle School



Area F – Gym Roofing has Started



Week Ending December 8, 2023