

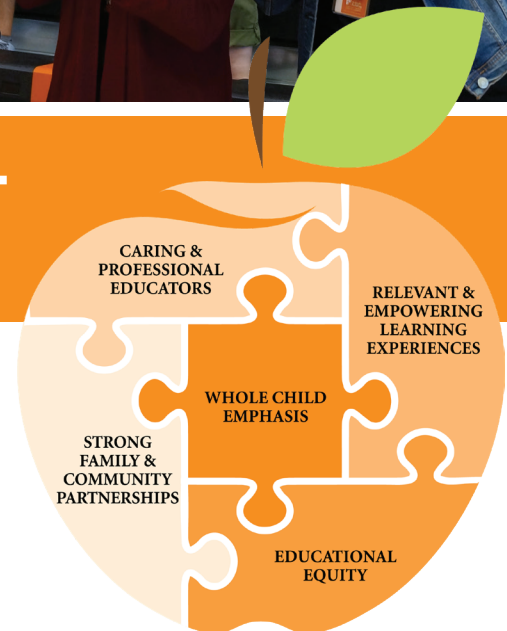
**VOTE**  
NOVEMBER 8

Listening. Planning.  
Responding Responsibly.

## 2022 OPERATIONAL REFERENDUM INFORMATION

### RETAINING & ATTRACTING the Best Educators for Every Classroom

The teacher in the classroom has the greatest impact on student success. If we wish to continue offering the highest quality education and services to our kids, we must keep and attract excellent educators by offering competitive salaries that keep up with inflation.



### WHY is an Operational Referendum Necessary?

**1. LACK OF STATE FUNDING**

There has been a 0% increase in ongoing per pupil funding from the State of Wisconsin for two years in conjunction with significant increases in inflation.

**2. INCREASINGLY COMPETITIVE MARKET**

To remain a "destination district" – maintain our ability to retain and attract the best educators in an increasingly competitive job market – we must offer competitive salaries.

**3. MORE LOCAL CONTROL**

A referendum allows our community to take into our own hands the funding of our schools through local tax collections.

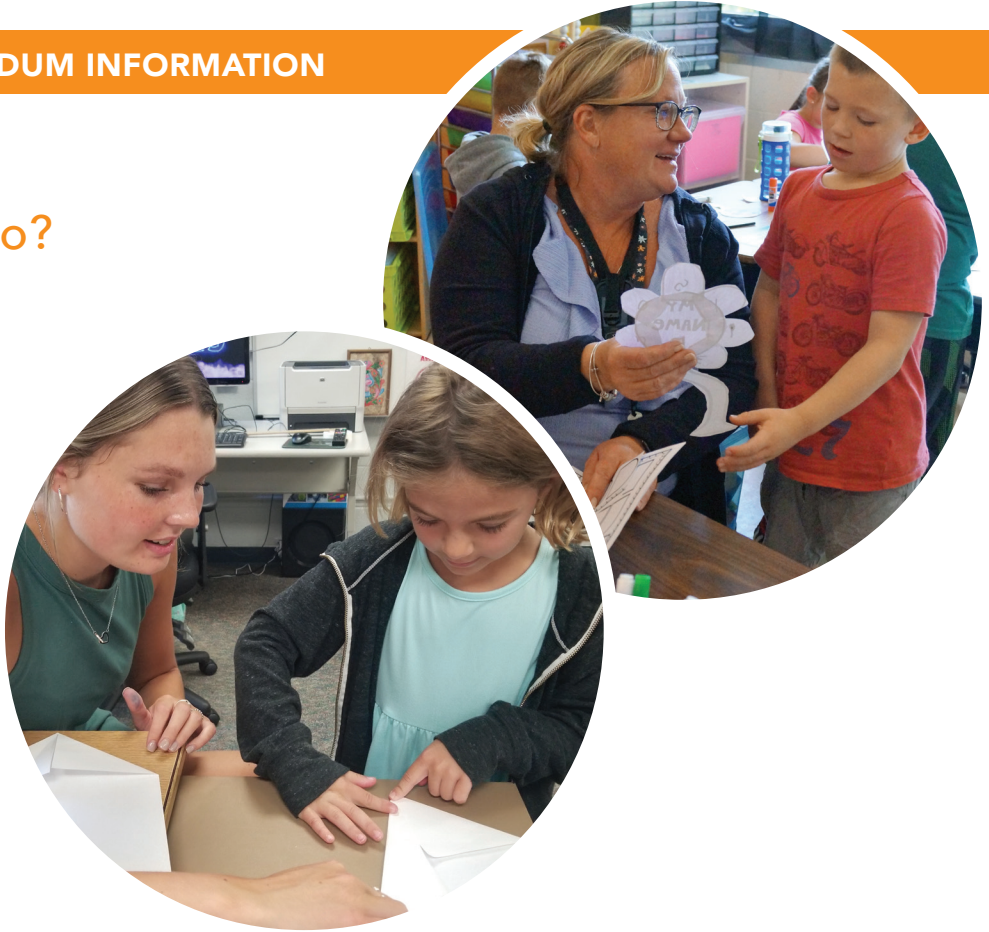
**4. ONE-TIME FUNDS DO NOT SUSTAIN ONGOING OPERATIONS**

Staffing and benefits comprise 80% of our operating budget (\$49M). While we appreciate one-time money, it does not cover our ongoing budget needs.

## 2022 OPERATIONAL REFERENDUM INFORMATION

### WHAT Will the Referendum Funds do?

1. Keep the best educators in our District by offering competitive salaries & benefits that keep up with inflation.
2. Maintain class sizes similar to what they are today.
3. Allow us to continue providing mental health services and staff positions paid for with one-time ESSER funds.
4. Provide the necessary ongoing operational funds to meet the needs of our kids and families.



### TAX IMPACT

Year	Amount / Year (total over 3 years: \$11,400,000) <sup>1</sup>	Projected Tax Impact (per \$100,000 of assessed property value) <sup>2</sup>
Year 1: 2022-2023	\$5,420,000	\$98
Year 2: 2023-2024	\$3,000,000	\$95
Year 3: 2024-2025	\$2,980,000	\$66

<sup>1</sup> The District has already reduced the total referendum by \$2M through debt reduction and expense savings (most notably health insurance provider change).

<sup>2</sup> Projected tax impact is based on the following assumptions: (1) New construction Equalized Assessed Value (EAV) increase of 2% in 2022 & 2023 and 1% for 2024 levy years. Total EAV increase projections: 12% 2022, 8% 2023 & 5% 2024. (2) Student growth increase 20 FTE for 2022, 30 FTE for 2023 and 40 FTE for 2024. (3) Equalization Aid (aka property tax relief) increase uses Baird model for 2022-23 and assumes same increases for 2023-24 and 2024-25.

### COMMUNITY OPEN HOUSES

Location: Rome Corners Intermediate School

- Tuesday, September 27, 6:30-7:30 p.m.
- Thursday, October 6, 6:30-7:30 p.m.
- Saturday, October 15, 9:30-10:30 a.m.

**NEED ACCOMMODATIONS OR UNABLE TO ATTEND AND INTERESTED IN LEARNING MORE?**

Contact Dr. Leslie Bergstrom, Oregon School District Superintendent:  
lcb2@OregonSD.org | 608-835-4003 (office) | 608-219-7507 (cell).

**VOTE**  
NOVEMBER 8

Listening. Planning.  
Responding Responsibly.

**LEARN MORE**

OregonSD.org/SchoolFunding



**HOLA!**

Planea asistir y/o necesita información en español, llame al 608-835-4276.