



Title I and ESSA



Orland School District 135



What is Title I?

Title I, Part A (Title I) of the Elementary and Secondary Education Act, as amended (ESEA) provides financial assistance to local educational agencies (LEAs) and schools with high numbers or high percentages of children from low-income families to help ensure that all children meet challenging state academic standards.

What is ESSA? Every Student Succeeds Act

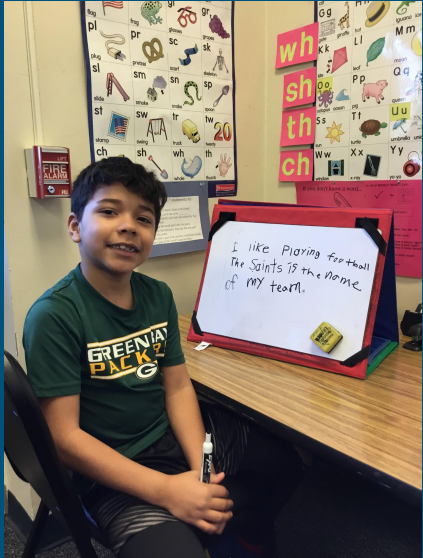
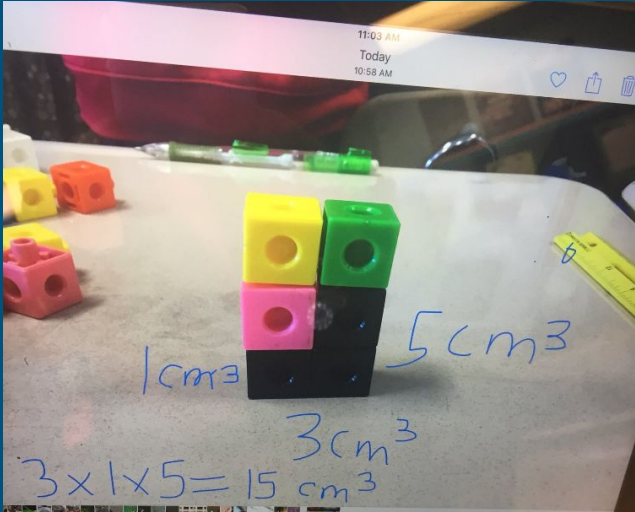
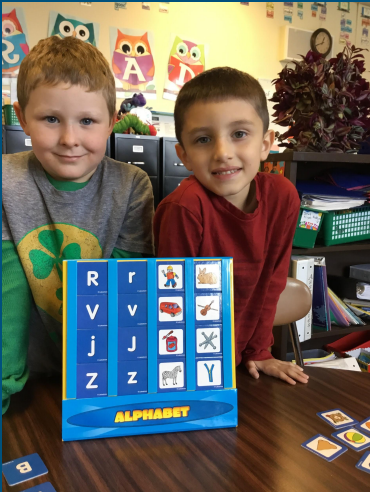
The new Every Student Succeeds Act, signed into law Dec. 10, 2015, give states more power on determining measures for schools. Title one is tied to ESSA because money is spent on the instructional needs of students to move forward in our quest for becoming leaders in learning.

Our Schools are Title I Targeted Assistance Schools

In a Title I, Part A targeted assistance school(s), Title I funds may only be used to provide supplemental instructional services to eligible children identified as having the greatest need for special assistance. Eligible children are children identified by the school as failing, or most at risk of failing, to meet the challenging state academic standards on the basis of multiple, educationally related, objective criteria.

Title I Funds Help to Support.....

Literacy and Numeracy



Title I Funds Help to Support.....

Science, Technology, Engineering, Math (STEM)



Title I Funds Help to Support.....

Author Visits



Title I Funds Help to Support.....

After School Programs



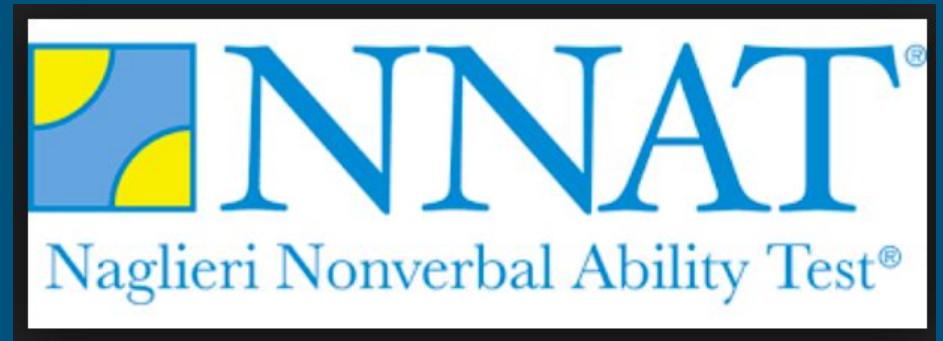
Title I Funds Help to Support.....

Parental, Community, and Family Involvement



Title I Funds Help to Support.....

Assessment



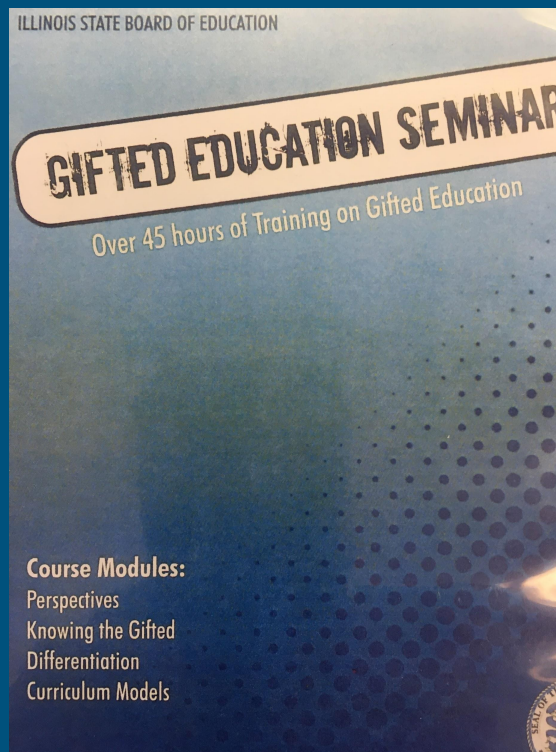
Title I Funds Help to Support.....

Social Emotional Education



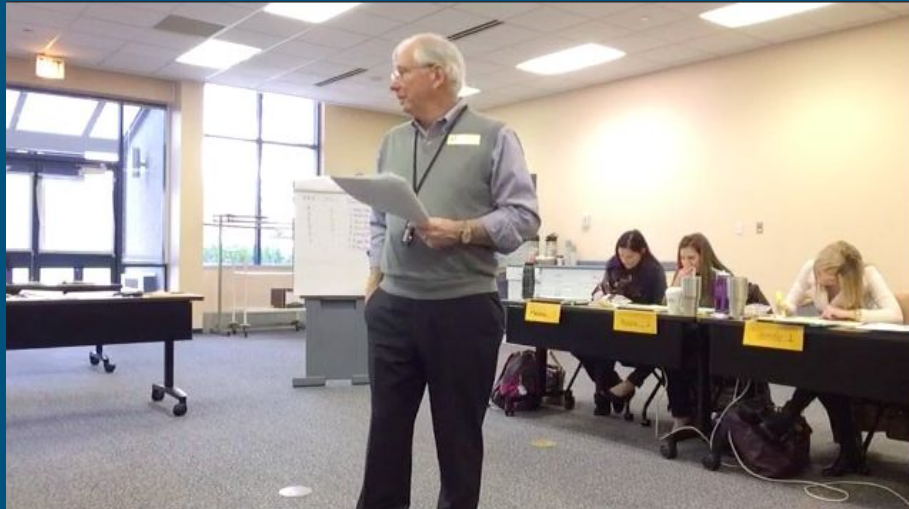
Title I Funds Help to Support.....

Gifted Education



Title I Funds Help to Support.....

Professional Development



Title I Funds Help to Support.....

Additional Examples

- Family Nights (Staffing)
 - Hachiko Night - Sharing literacy with families
 - Grandparents' Night - Sharing vocabulary, interviews with writing, art projects with Grandparents or Special People
- Reading Club
 - Staffing
 - Materials
 - Teaching Resources
- Math Club
 - Staffing
 - Materials
 - Teaching Resources

Title I Funds Help to Support.....

Additional Examples

- Math Intervention Staffing
 - Materials
- Summer Library Sessions
 - Staffing
 - Incentives
- Mystery Science Subscription
- PD & Booktalk for staff
 - Purchased Formative 5
 - Purchased The Book Whisperer & Running Wild
- Classroom libraries
- Math manipulatives / visual displays
 - Fraction Magnets

Title I Funds Help to Support.....

Additional Examples

- PBIS
 - Team Meetings / Staffing
- WATCH DOGS (Dads of great students)
 - Parent Information Night
 - Pizza Party
 - Materials
- Telephone Headphones / Speakers
 - Students use for speech to text or for just listening
- Reading Intervention
 - Staffing
 - PD - Just Words, Wilson, Foundations
 - Materials - Just Words, Summer Reading Bags

Shareholder Feedback Guides Action Plan

Orland School District 135 Title I Planning Survey

Orland School District 135 receives Federal funds to provide additional learning opportunities, resources, and extra instructional support for schools. Currently, six of our buildings qualify for this funding, which means these schools benefit from Title I funds. The intent of this survey is to gather information on current parenting partnerships and seek ways we can continue to support our families for the success of our students. This survey will be open through Friday, May 5. Thank you for your time!

1. Stakeholder Representation (please check all that apply)

Check all that apply.

- I am a parent in Orland School District 135.
- I am a local government representative.
- I am a representative of a community-based organization.

2. Which school or schools does your child or children attend?

Check all that apply.

- Park School
- Prairie School
- Center School
- Centennial School
- Liberty School
- Meadow Ridge School
- High Point School
- Jerling Junior High School
- Orland Junior High School
- Century Junior High School
- Out of District Placement

3. In which school programs does your child participate?

Check all that apply.

- After school reading.
- After School math.
- RTI (Response to Intervention)
- High Math / Honors Math
- Enrichment / Honors Language Arts
- Social Work Groups (i.e. friendship groups, lunch groups, etc.)
- Summer School
- Early Childhood Education - At Risk

4. For which area would you like to see more resources or improved instruction and support?

Mark only one oval.

- Language Arts
- Mathematics
- Honors and Gifted Education
- Bullying Prevention
- Social and Emotional Learning
- Science Education
- Social Science (Social Studies) Education
- Summer School
- Early Childhood Education - At Risk

5. From your last answer to the previous question, what do you think is needed to enhance the area you selected?

Mark only one oval.

- Teacher professional development / Teacher training
- More resources (books, online subscriptions, apps)
- Programs for students to attend
- More technology

6. For which area would you like to see more parent events, parent education, and parent involvement?

Mark only one oval.

- Language Arts
- Mathematics
- Honors and Gifted Education
- Bullying Prevention
- Social and Emotional Learning
- Science Education
- Social Science (Social Studies) Education
- Summer School
- RTI (Response to Intervention)
- Early Childhood Education - At Risk

7. How do you feel the District can use Federal funds to improve student education in Orland School District 135?
