

Godley ISD CTE

Partnership Breakfast



WELCOME

Nikki Nix

Godley ISD Director of CTE & CCMR

...



GROWTH

Dr. Rich Dear

Godley ISD Lead Learner and Superintendent

....

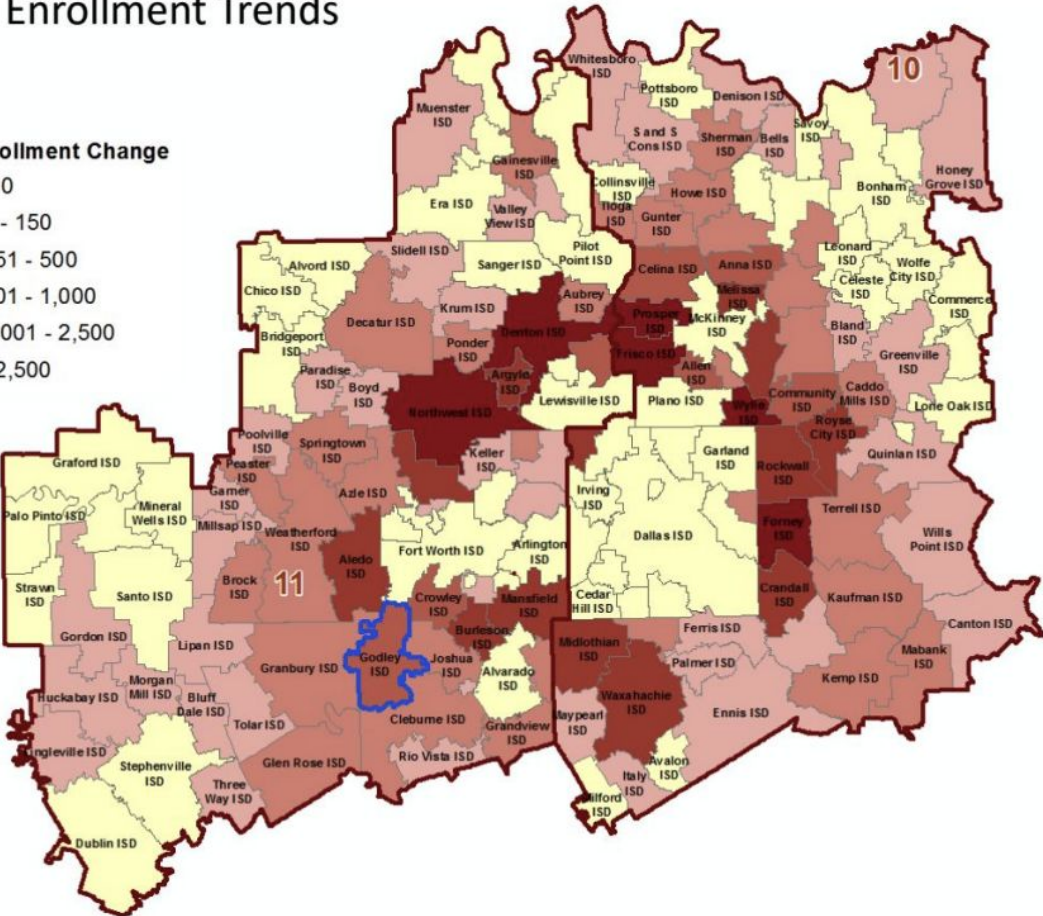
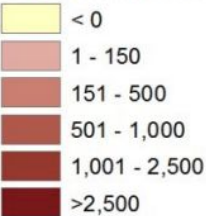


Godley ISD growth



State Enrollment Trends

5 Yr Enrollment Change

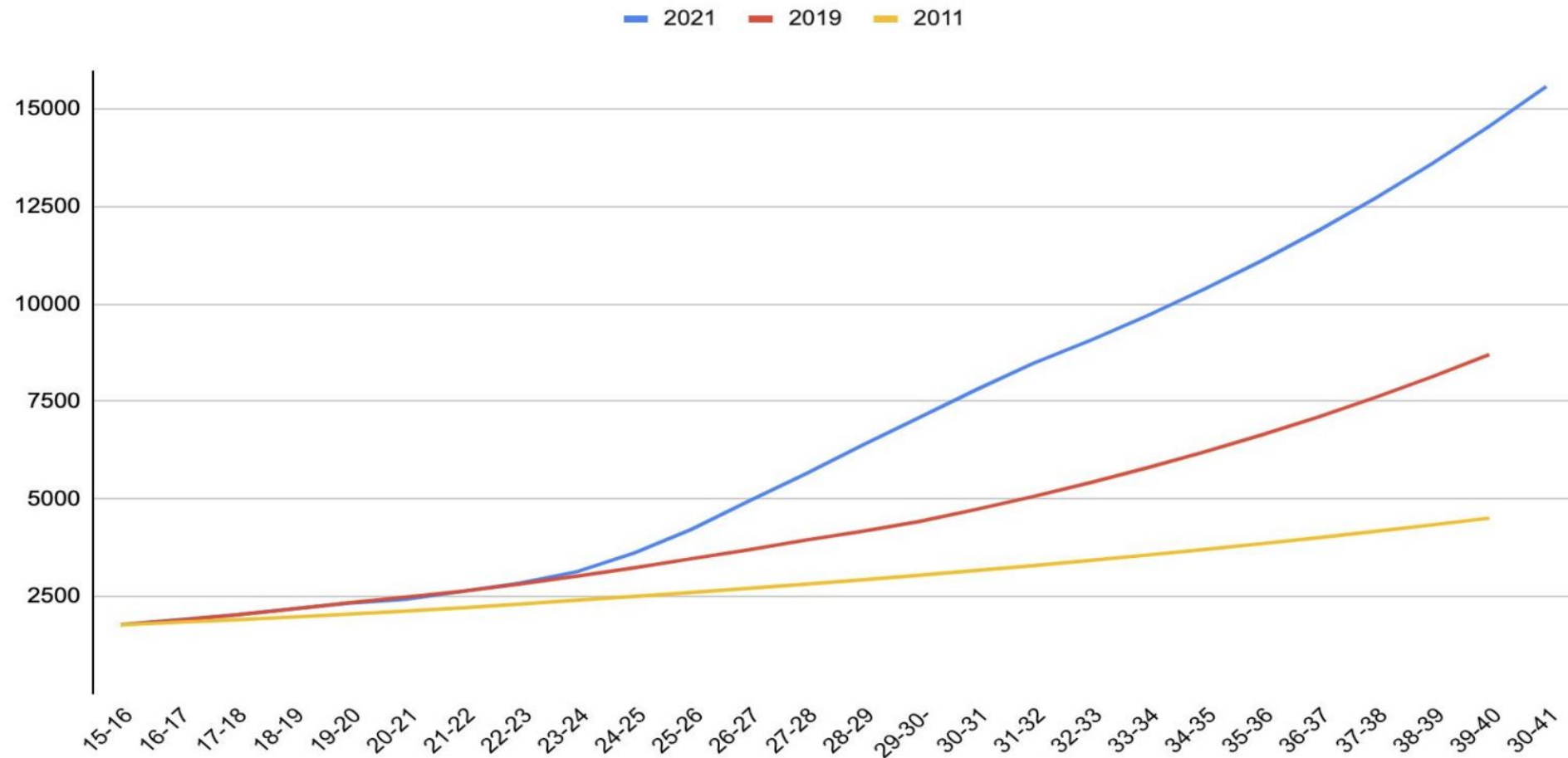


- Godley ISD enrollment has grown by 665 students between 2015/16 and 2020/21, an increase of 37.4%
- GISD enrollment was up 95 students from 2019/20, a increase of 4.0%
- Region 10 has seen an overall enrollment decline of 17,918 students from 2019/20, a decline of -2.2%
- Region 11 enrollment has declined -2.9% from 2019/20, a difference of 17,104 students



Demographic studies 2011, 2019, 2021

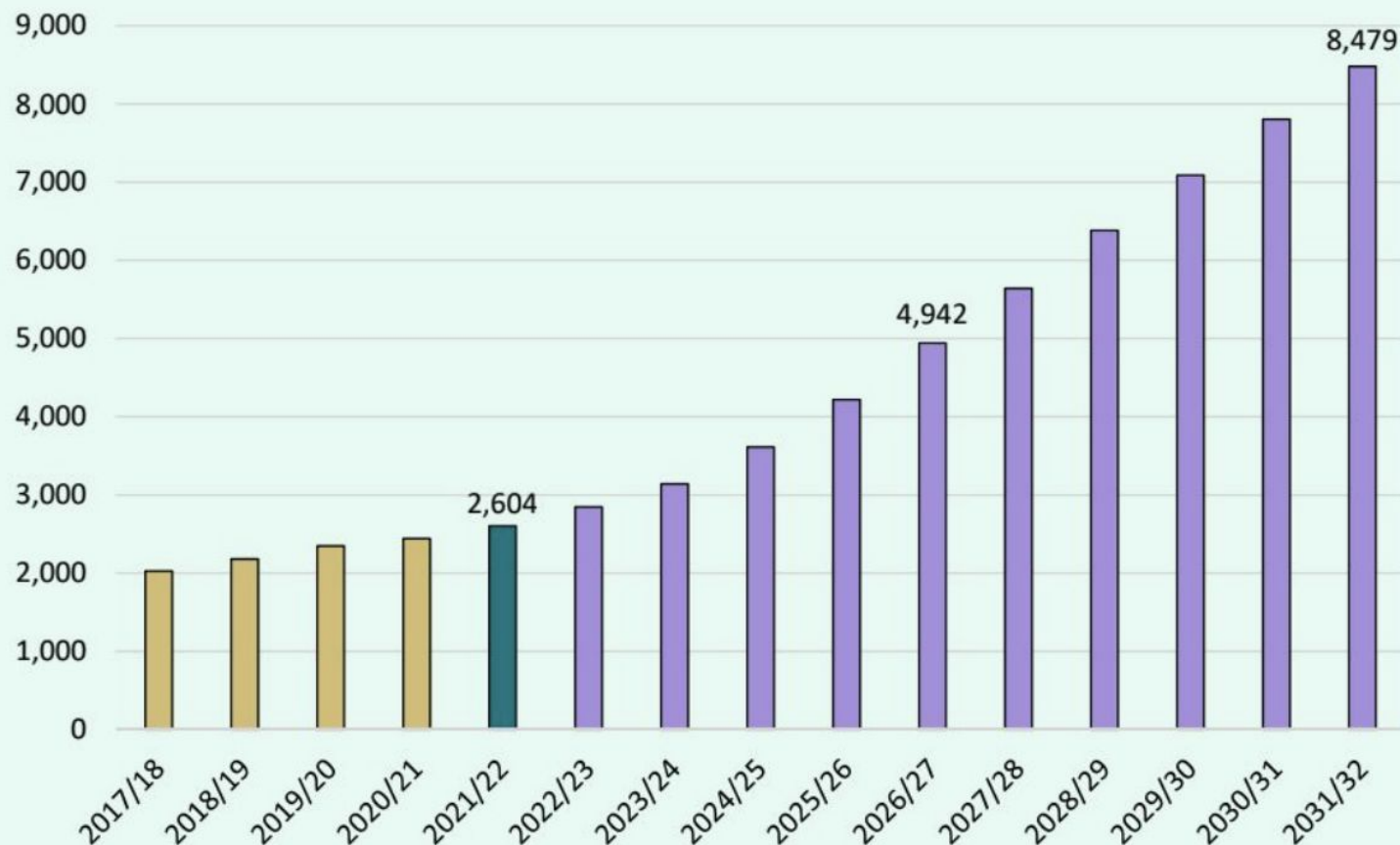
Comparison of 2021, 2019 and 2011 Demographic reports: Student enrollment v year





Key Takeaways

Enrollment Forecast



- Godley ISD enrollment grew by more than 650 students in the last 5 years
- Despite the impacts of COVID-19, 2020/21 enrollment increased 4% or 95 students from 2019/20
- 2021 total home sales within GISD are on pace to exceed 2020 totals
- The district has over 780 lots currently available to build on, with over 16,200 additional lots in the planning stages
- Groundwork is currently underway on roughly 830 lots that will impact the district in the next 1-2 years
- GISD is forecasted to enroll nearly 5,000 students by 2026/27 and nearly 8,500 by 2031/32
- 15-20 year enrollment growth could put district enrollment between 18,000 to 20,000 students

Measure of success

- Pilar 2: Student Readiness
- Pilar 3: Engaged Well-Rounded Students

CTE

NIKKI NIX

Godley ISD Director of CTE & CCMR

...

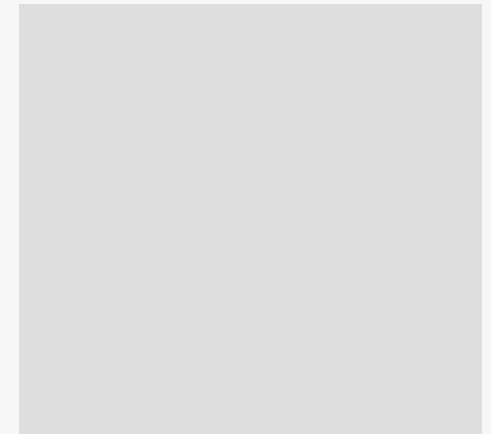


What is CTE?











What is CTE?

- Career & Technical Education
- Connecting students to careers and post-secondary education
- Explore passion
- Hands-on
- Real-world, real-life experience
- Prepare students for the workforce

What is CTE?

- Connection to Real World
 - Mentors
 - Curriculum Coaches
 - SME (Subject Matter Experts)
 - Guest Speakers
 - Internships

TEA 14 Career Clusters



- ☐ Agriculture, Food & Natural Resources
- ☐ Architecture & Construction
- ☐ Arts, AV Technology & Communications
- ☐ Business, Marketing & Finance
- ☐ Education & Training
- ☐ Energy
- ☐ Health Science
- ☐ Hospitality & Tourism
- ☐ Human Services
- ☐ Information Technology
- ☐ Law & Public Safety
- ☐ Manufacturing
- ☐ STEM
- ☐ Transportation, Distribution & Logistics

Godley ISD Offers

8 of 14 Career Clusters



✓ Agriculture, Food & Natural Resources

❑ Architecture & Construction

✓ Arts, AV Technology & Communications

✓ Business, Marketing & Finance

✓ Education & Training

❑ Energy

✓ Health Science

❑ Hospitality & Tourism

✓ Human Services

✓ Information Technology

❑ Law & Public Safety

❑ Manufacturing

❑ STEM

✓ Transportation, Distribution & Logistics

Godley ISD Programs of Study

14 Total



Agriculture, Food & Natural Resources

- ☐ Agribusiness
- ☐ Animal Science
- ☐ Applied Agriculture Engineering
- ☐ Plant Science

Arts, AV Technology & Communications

- ☐ Digital Communications
- ☐ Graphic Design & Multimedia Arts

Business, Marketing & Finance

- ☐ Entrepreneurship



Programs of Study

14 Total



Education & Training

- ❑ Teaching & Training

Health Science

- ❑ Exercise Science & Wellness
- ❑ Healthcare Diagnostics
- ❑ Healthcare Therapeutic

Human Services

- ❑ Family & Community Services

Programs of Study

14 Total

Information Technology

- ❑ Information Technology Support & Services

Transportation, Distribution & Logistics

- ❑ Drone (Unmanned Flight) *Regional Program of Study*

Program of Study

4 year sequence of courses

Applied Ag Engineering

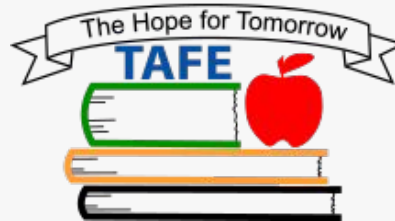
Freshman	Principles of AFNR
Sophomore	Ag Mech and Metal
Junior	Ag Structure & Fabrication
Senior	Practicum in AFNR

Health Science

Freshman	Principles of Health Science
Sophomore	Medical Terminology
Junior	Health Science Clinical
Senior	Practicum in Health Science

CTSO

Career & Technical Student Organization



Pre-K to Professionals

- Career Poster Contest
- Film Festival
- Exposure to different Careers
- Peer to Peer Career Fair

CTE Core Courses

These courses are CTE courses that also fulfill core graduation requirements.

- Math for Technical Professionals
- Forensic Science
- Anatomy & Physiology
- Scientific Research & Design
- Advanced Animal Science
- Floral Design



Capstone Experience

Culminating experience for students in CTE programs.

Capstone Experiences include:

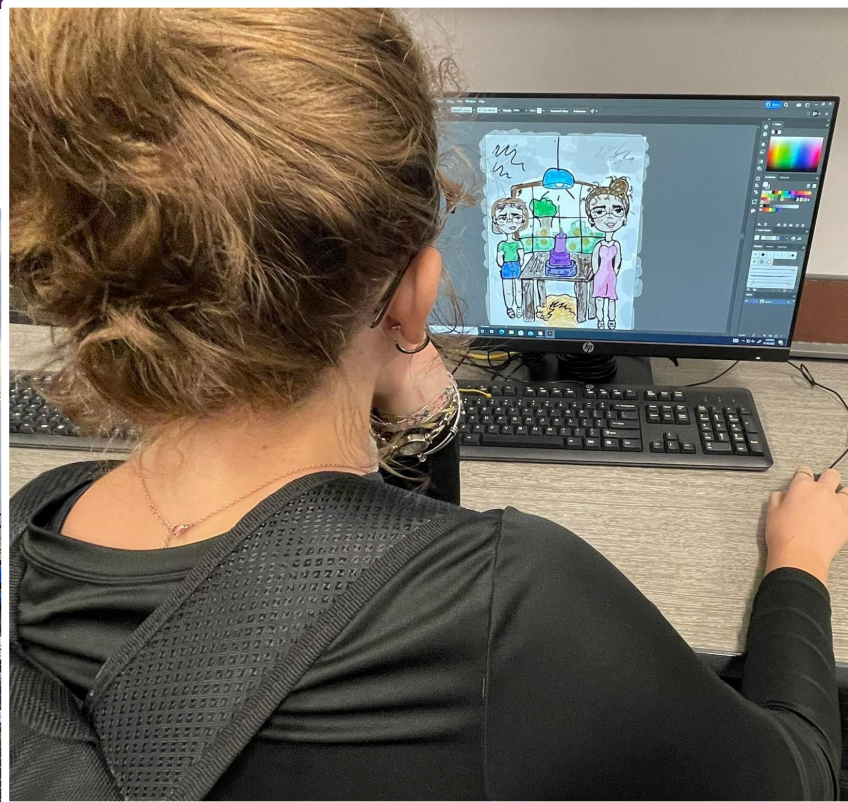
- Student Enterprise
- Internship
(Paid/Unpaid)
- Panel Presentation



Capstone Experience



Capstone Experience

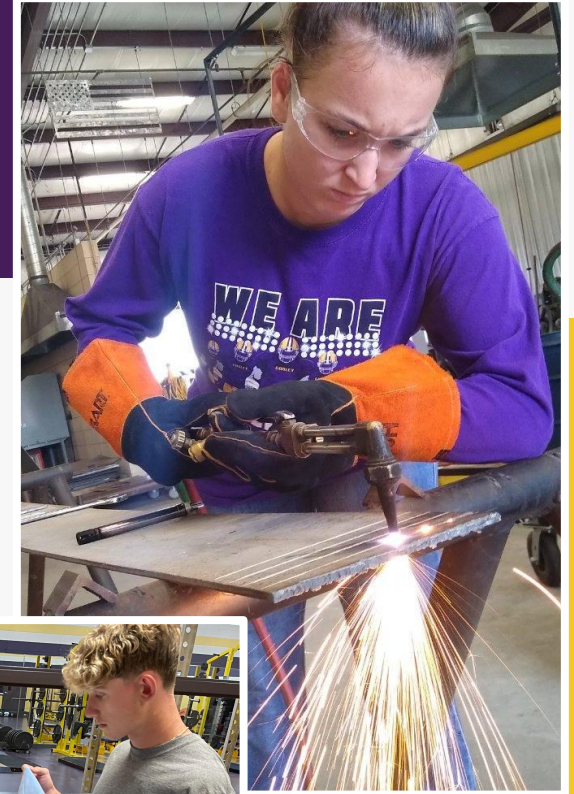


Capstone Experience



Certifications

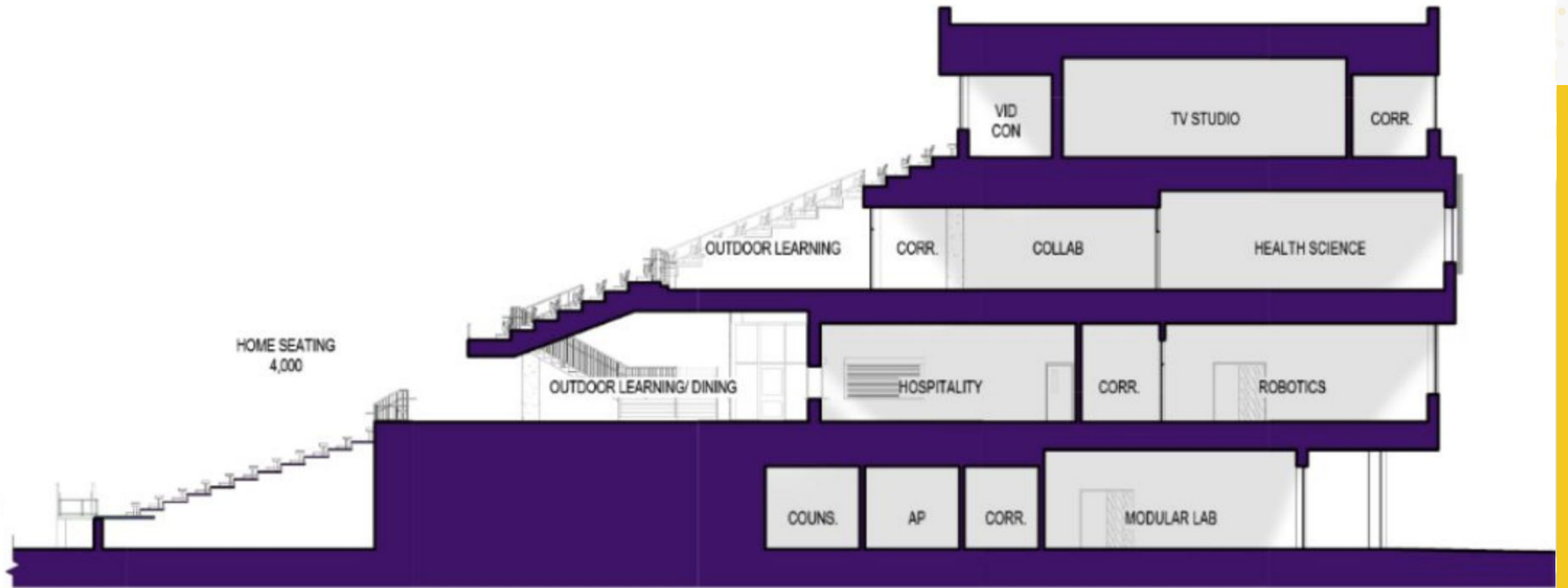
- ✓ AWS D 1.1
- ✓ Microsoft Office
- ✓ OSHA 30 Hour
- ✓ Adobe
- ✓ FAA Part 107 Remote Drone Pilot
- ✓ PCT – Patient Care Technician
- ✓ Floral Design
- ✓ Teacher Aide
- ✓ And more....



CTE Center



CTE Center



CTE/ HOME SIDE STADIUM

CTE Center



CTE Center



CTE Center



CTE Center



Programs in CTE Center



Business



Welding



Floral Design



Health Science



Robotics



iLead



Audio/Video

Production



Graphic Design



Education &

Training

Potential Future

Programming:



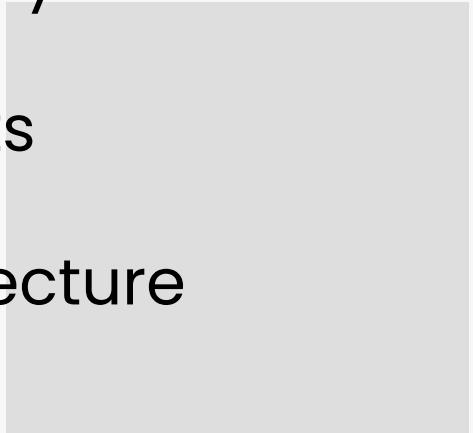
Culinary Arts



eSports



Architecture



Ways to Partner

- Mentor
- SME (Subject Matter Expert)
- Internship Provider
- Judge
- Guest Speaker
- Mock Interviews
- Program Evaluation/Feedback



Why Partner?

- Mutually Beneficial, not a one-way partnership
- ROI – Return on Investment
 - Hiring Pipeline
 - Advertising/Partnership Representation
- Growing the next generation of leaders
- Grows the Godley Community

Growing Strong with Deep Roots

....



GHS Career Fair

**Friday, January 13
1-3:30 p.m.**

Career match with students
15 minute conversations/presentations about your
career

Jessica Leatherman

jleatherman@godleyisd.net

How to Partner

**Interested in Partnering or know
someone who might be?**

[Submit Form](#)

Contact:
Nikki Nix

nnix@godleyisd.net

Social Media



@godleyisdcte

SmugMug

🏠 > CTE - Career and Technical Education



GISD CTE



Nikki Nix

Director of CTE & CCMR

nnix@godleyisd.net

817-592-4140

