



# Godley ISD CTE

## An Overview

# TEA 14 Career Clusters



- ☐ Agriculture, Food & Natural Resources
- ☐ Architecture & Construction
- ☐ Arts, AV Technology & Communications
- ☐ Business, Marketing & Finance
- ☐ Education & Training
- ☐ Energy
- ☐ Health Science
- ☐ Hospitality & Tourism
- ☐ Human Services
- ☐ Information Technology
- ☐ Law & Public Safety
- ☐ Manufacturing
- ☐ STEM
- ☐ Transportation, Distribution & Logistics

# Godley ISD Offers

## 8 of 14 Career Clusters



✓ Agriculture, Food & Natural Resources

❑ Architecture & Construction

✓ Arts, AV Technology & Communications

✓ Business, Marketing & Finance

✓ Education & Training

❑ Energy

✓ Health Science

❑ Hospitality & Tourism

✓ Human Services

✓ Information Technology

❑ Law & Public Safety

❑ Manufacturing

❑ STEM

✓ Transportation, Distribution & Logistics

# Godley ISD Programs of Study

## 12 Total



### Agriculture, Food & Natural Resources

- ❑ Agribusiness
- ❑ Animal Science
- ❑ Applied Agriculture Engineering
- ❑ Plant Science

### Arts, AV Technology & Communications

- ❑ Digital Communications
- ❑ Graphic Design & Multimedia Arts

### Business, Marketing & Finance

- ❑ Entrepreneurship



# Programs of Study

## 12 Total



### Education & Training

- ❑ Teaching & Training

### Health Science

- ❑ Healthcare Therapeutic
  - ❑ PCT
  - ❑ EMT
  - ❑ Athletic Training

### Human Services

- ❑ Family & Community Services

# Programs of Study

## 12 Total

### Information Technology

- ❑ Information Technology Support & Services

### Transportation, Distribution & Logistics

- ❑ Drone (Unmanned Flight) *Regional Program of Study*

# Program of Study

## 4 year sequence of courses

### Applied Ag Engineering

Freshman	Principles of AFNR
Sophomore	Ag Mech and Metal
Junior	Ag Structure & Fabrication
Senior	Practicum in AFNR

### Health Science

Freshman	Principles of Health Science
Sophomore	Medical Terminology
Junior	Health Science Clinical
Senior	Practicum in Health Science

# Capstone Experience

Culminating experience for students in CTE programs.

Capstone Experiences include:

- Student Enterprise
- Internship  
(Paid/Unpaid)
- Panel Presentation



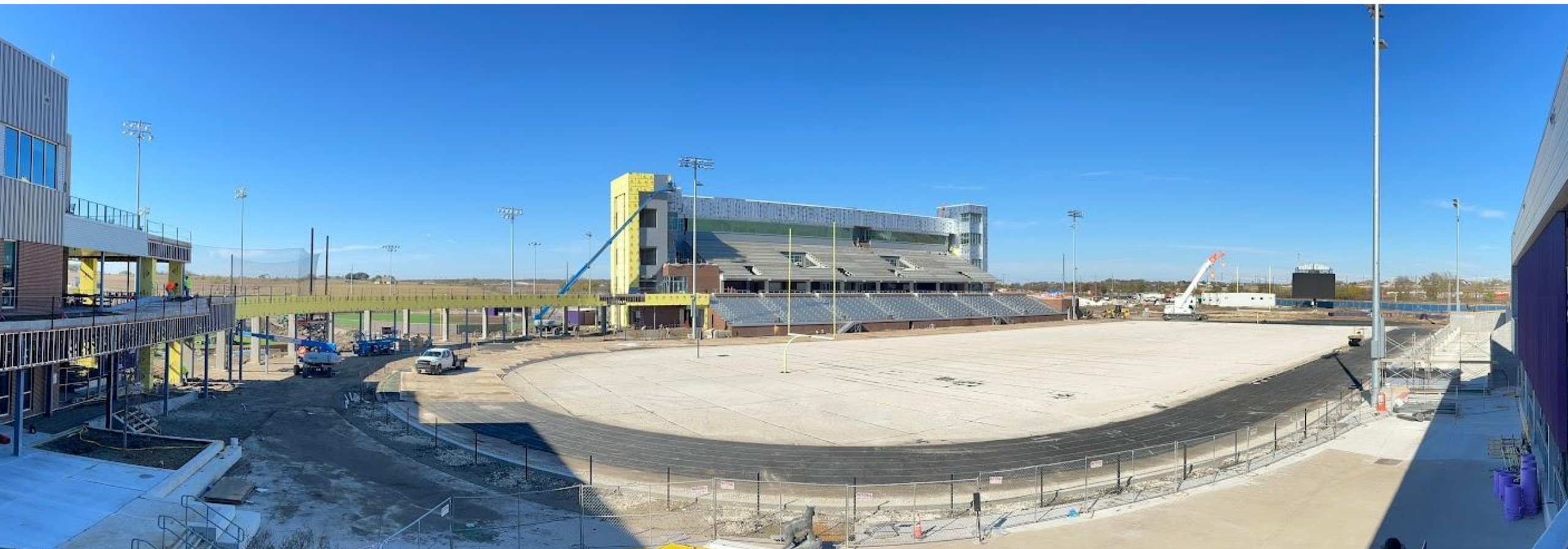
# THE WILD



**WILDCAT INNOVATIVE LEARNING DESTINATION**



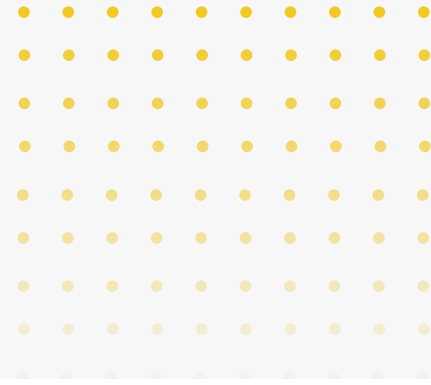


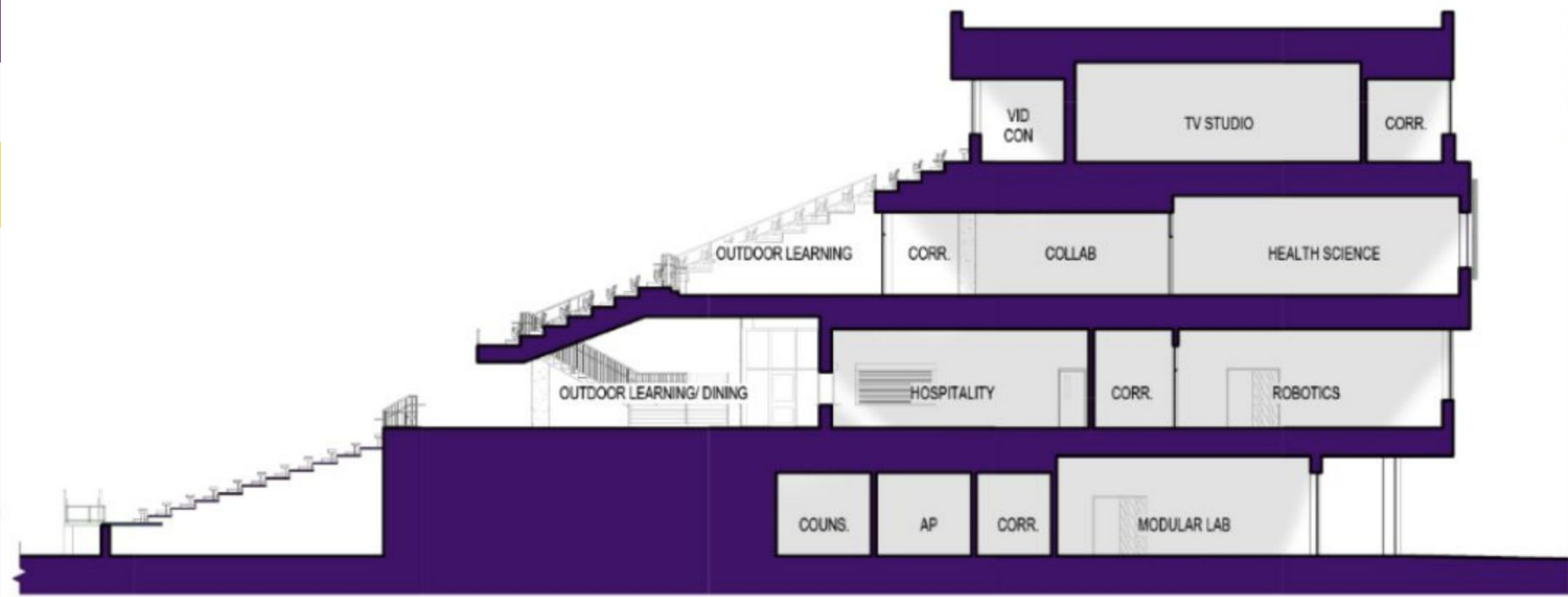












CTE/ HOME SIDE STADIUM













**School Store – Open to  
the Public**





# Floral Design Lab





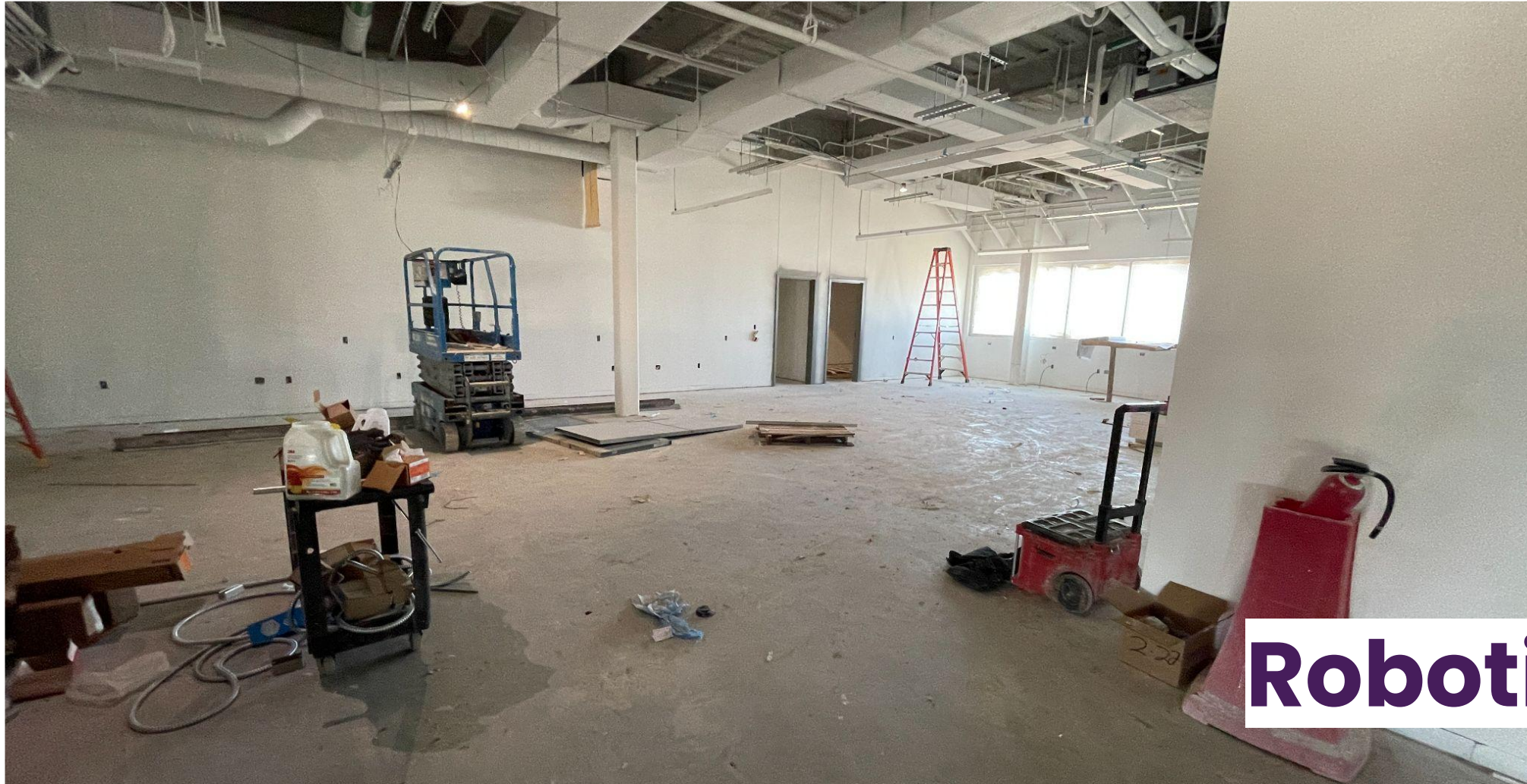
## Welding Lab





# IT/Networking Labs





## Robotics Lab





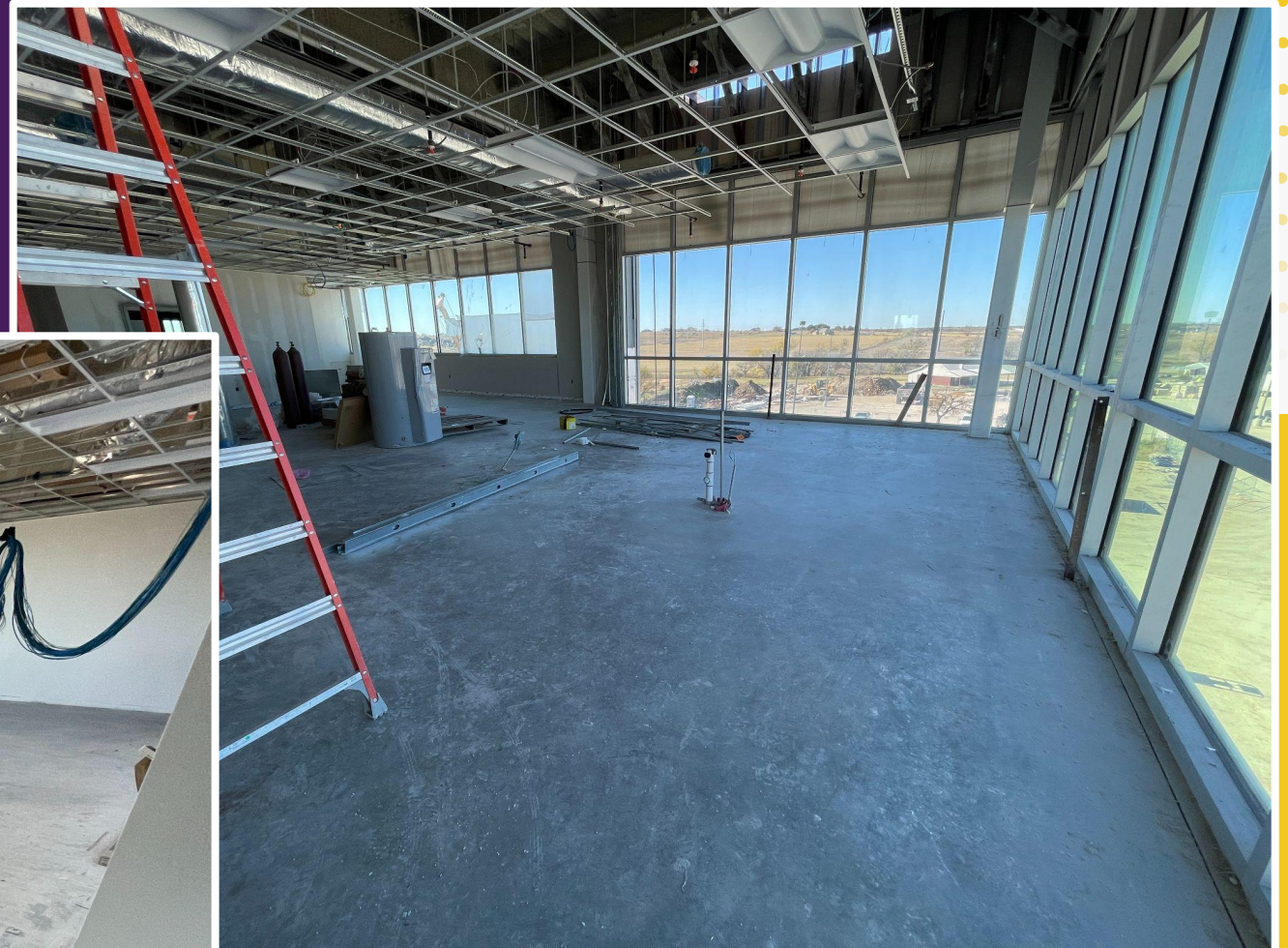
# Flex Space/Restaurant





## Science Labs





# Health Science /Hospital Lab ...





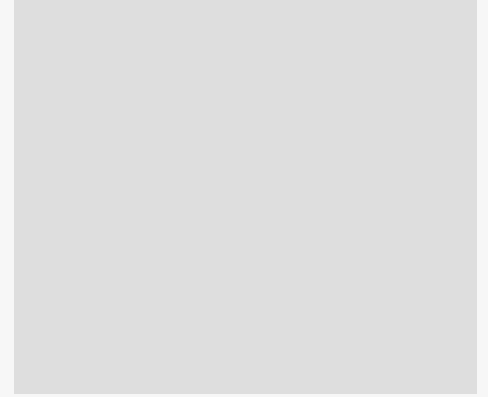
# TV Studio & Control Room

....





**Audio/Video,  
Graphic Design &  
Huddle Rooms**













# Programs in



- Business

- Welding

- Floral Design

- Health Science

- Robotics

- iLead

- Audio/Video

Production

- Graphic Design

- Education &

Training

## Potential Future

### Programming:

- Culinary Arts

- eSports

- Architecture

# Ways to Partner

## → **Time**, *Talent*, Treasure

- Mentor
- SME (Subject Matter Expert)
- Internship Provider
- Judge
- Guest Speaker
- Mock Interviews
- Program Evaluation/Feedback



# Why Partner?

- Mutually Beneficial, not a one-way partnership
- ROI – Return on Investment
  - Hiring Pipeline
  - Advertising/Partnership Representation
- Growing the next generation of leaders
- Grows the Godley Community

***Growing Strong with Deep Roots***

....

# Social Media



@godleyisdcte



# Nikki Nix

Director of CTE & CCMR

[nnix@godleyisd.net](mailto:nnix@godleyisd.net)

817-592-2250

