



Date: 1/14/21
Performed by: Andrew Tinklenberg
Location: Henry High School
RE: Radon Testing

INTRODUCTION

From January 4 – 7, 2021, radon testing was performed within Henry High School. The testing was performed in frequently-occupied ground contact rooms and rooms immediately above unoccupied spaces (crawl spaces and tunnels) that are in contact with the ground per the Environmental Protection Agency (EPA) and Minnesota Department of Health (MDH) guidelines.

SUMMARY OF FINDINGS

All of the areas that were tested were found to have radon gas levels below 4.0 picocuries per liter of air (pCi/L), which is the EPA and MDH action level. The test kit in Gym 016 was lost/removed and could not be submitted for analysis. Since the radon levels throughout the building were found to be very low, re-testing in the space is not necessary. (Note: Duplicate (side-by-side) sampling was conducted in select areas at a rate of 10% of areas tested, and Rooms A, B & C were the blank samples.)

Please refer to the attached AirChek radon testing report and sample diagrams for further information concerning the radon testing, areas that were tested, and the radon levels that were found to be present. Per MDH requirements, this information will be shared with the local regulatory agency (MDH). The information will also be posted on the EH&S webpage available through the main MPS website and maintained on file by EH&S.

If you have any questions regarding this information, please feel free to contact me. Thank you,

Andrew Tinklenberg
NRPP ID# 111389 RT



Safety Specialist - Environmental Health & Safety
Minneapolis Public Schools
Environmental Health & Safety - Facilities Dept.

andrew.tinklenberg@mpls.k12.mn.us

612-668-0306 Phone

612-668-0310 EH & S General Office

612-668-0275 Fax



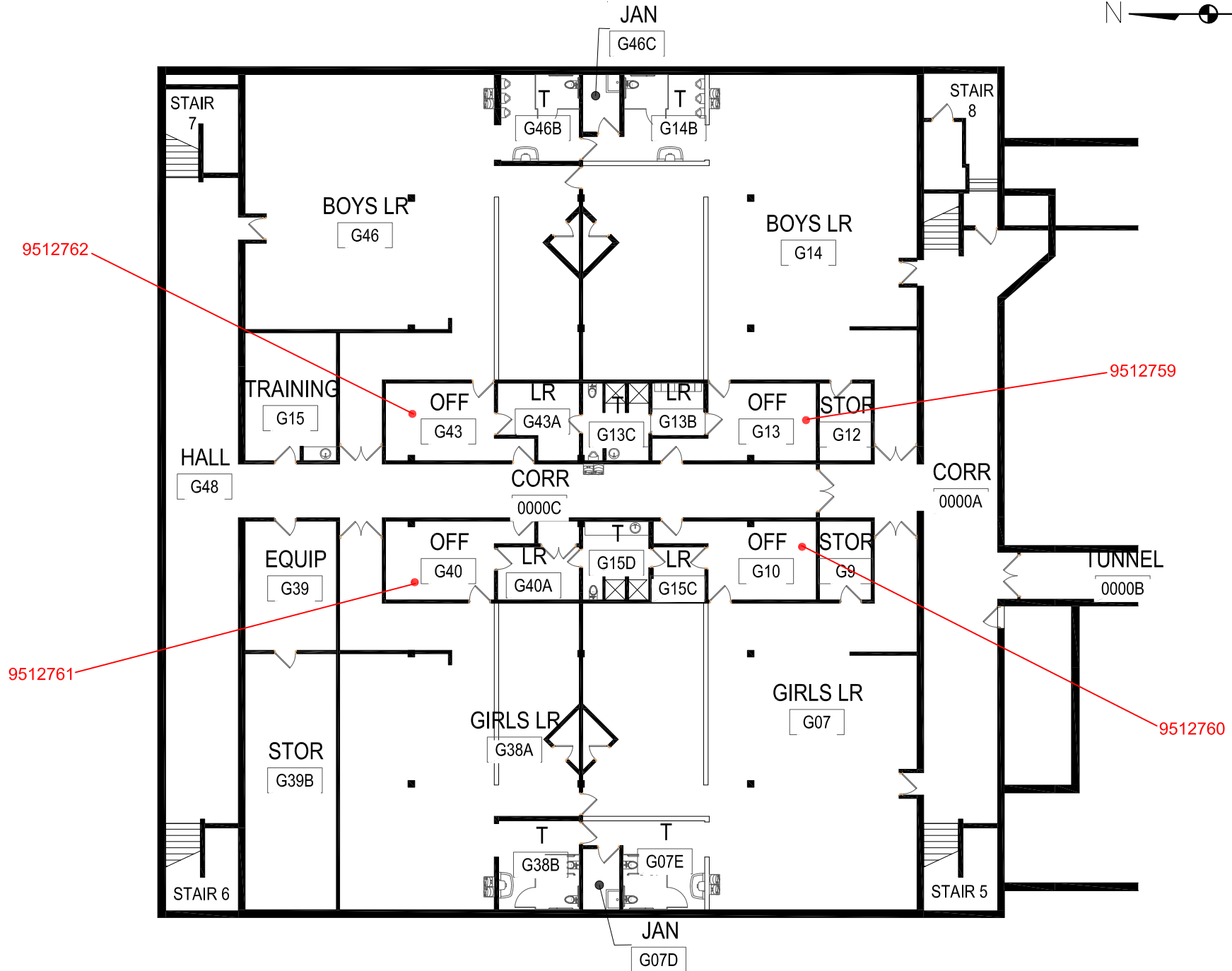
I5554 / ANDREW TINKLENBERG / MINNEAPOLIS PUBLIC SCHOOLS

Kit Number	Start Date	Start Time	End Date	End Time	Temp.	Facility	Building	Room	Project ID	Floor	Result
9512726	2021-01-04	7:00 am	2021-01-07	2:00 pm	70	MPS	HENRY HIGH	CUSTODIAN 026	HENRY HIGH	0	< 0.3
9512746	2021-01-04	7:00 am	2021-01-07	2:00 pm	70	MPS	HENRY HIGH	CUSTODIAN 026	HENRY HIGH	0	< 0.3
9512747	2021-01-04	7:00 am	2021-01-07	2:00 pm	70	MPS	HENRY HIGH	OFFICE 024B	HENRY HIGH	0	< 0.3
9512748	2021-01-04	7:00 am	2021-01-07	2:00 pm	70	MPS	HENRY HIGH	CAFETERIA 012A	HENRY HIGH	0	0.7
9512749	2021-01-04	7:00 am	2021-01-07	2:00 pm	70	MPS	HENRY HIGH	BOYS/GIRLS 021	HENRY HIGH	0	< 0.3
9512750	2021-01-04	8:00 am	2021-01-07	2:00 pm	70	MPS	HENRY HIGH	OFFICE 024A	HENRY HIGH	0	< 0.3
9512751	2021-01-04	8:00 am	2021-01-07	2:00 pm	68	MPS	HENRY HIGH	WEIGHTS 027	HENRY HIGH	0	0.6
9512752	2021-01-04	8:00 am	2021-01-07	2:00 pm	68	MPS	HENRY HIGH	CLASS 035	HENRY HIGH	0	0.9
9512753	2021-01-04	8:00 am	2021-01-07	2:00 pm	68	MPS	HENRY HIGH	CLASS 037	HENRY HIGH	0	0.9
9512754	2021-01-04	8:00 am	2021-01-07	2:00 pm	68	MPS	HENRY HIGH	CLASS 038	HENRY HIGH	0	0.7
9512755	2021-01-04	8:00 am	2021-01-07	2:00 pm	70	MPS	HENRY HIGH	CLASS G101	HENRY HIGH	0	< 0.3
9512756	2021-01-04	8:00 am	2021-01-07	2:00 pm	70	MPS	HENRY HIGH	CLASS G101	HENRY HIGH	0	1.2
9512757	2021-01-04	8:00 am	2021-01-07	2:00 pm	70	MPS	HENRY HIGH	OFFICE G104	HENRY HIGH	0	0.6
9512758	2021-01-04	8:00 am	2021-01-07	2:00 pm	70	MPS	HENRY HIGH	GYM 117	HENRY HIGH	1	< 0.3
9512759	2021-01-04	8:00 am	2021-01-07	2:00 pm	70	MPS	HENRY HIGH	OFFICE G13	HENRY HIGH	0	< 0.3
9512760	2021-01-04	8:00 am	2021-01-07	2:00 pm	70	MPS	HENRY HIGH	OFFICE G10	HENRY HIGH	0	< 0.3
9512761	2021-01-04	8:00 am	2021-01-07	2:00 pm	70	MPS	HENRY HIGH	OFFICE G40	HENRY HIGH	0	< 0.3
9512762	2021-01-04	8:00 am	2021-01-07	2:00 pm	70	MPS	HENRY HIGH	OFFICE G43	HENRY HIGH	0	< 0.3
9512763	2021-01-04	8:00 am	2021-01-07	2:00 pm	68	MPS	HENRY HIGH	CLASS 018	HENRY HIGH	0	< 0.3
9512764	2021-01-04	8:00 am	2021-01-07	2:00 pm	68	MPS	HENRY HIGH	OFFICE 018F	HENRY HIGH	0	0.6
9512765	2021-01-04	8:00 am	2021-01-07	2:00 pm	68	MPS	HENRY HIGH	OFFICE 018C	HENRY HIGH	0	< 0.3
9512767	2021-01-04	8:00 am	2021-01-07	2:00 pm	70	MPS	HENRY HIGH	CLASS 012	HENRY HIGH	0	0.6
9512768	2021-01-04	8:00 am	2021-01-07	2:00 pm	68	MPS	HENRY HIGH	CLASS 010	HENRY HIGH	0	1.3
9512769	2021-01-04	8:00 am	2021-01-07	2:00 pm	68	MPS	HENRY HIGH	OFFICE 007	HENRY HIGH	0	0.6
9512770	2021-01-04	8:00 am	2021-01-07	2:00 pm	68	MPS	HENRY HIGH	OFFICE 006/005	HENRY HIGH	0	< 0.3
9512771	2021-01-04	8:00 am	2021-01-07	2:00 pm	68	MPS	HENRY HIGH	OFFICE 005A	HENRY HIGH	0	< 0.3
9512772	2021-01-04	8:00 am	2021-01-07	2:00 pm	68	MPS	HENRY HIGH	OFFICE 004	HENRY HIGH	0	0.7
9512773	2021-01-04	8:00 am	2021-01-07	2:00 pm	68	MPS	HENRY HIGH	CLASS 008	HENRY HIGH	0	< 0.3
9512774	2021-01-04	8:00 am	2021-01-07	2:00 pm	70	MPS	HENRY HIGH	OFFICE 008A	HENRY HIGH	0	< 0.3
9512775	2021-01-04	9:00 am	2021-01-07	3:00 pm	68	MPS	HENRY HIGH	BAND 001	HENRY HIGH	0	< 0.3
9512776	2021-01-04	9:00 am	2021-01-07	3:00 pm	68	MPS	HENRY HIGH	OFFICE 001A	HENRY HIGH	0	< 0.3
9512777	2021-01-04	9:00 am	2021-01-07	3:00 pm	68	MPS	HENRY HIGH	OFFICE 001A	HENRY HIGH	0	0.5
9512778	2021-01-04	9:00 am	2021-01-07	3:00 pm	70	MPS	HENRY HIGH	OFFICE 105	HENRY HIGH	1	< 0.3
9512779	2021-01-04	9:00 am	2021-01-07	3:00 pm	70	MPS	HENRY HIGH	OFFICE 104	HENRY HIGH	1	< 0.3
9512780	2021-01-04	9:00 am	2021-01-07	3:00 pm	70	MPS	HENRY HIGH	OFFICE 104B	HENRY HIGH	1	< 0.3

I5554 / ANDREW TINKLENBERG / MINNEAPOLIS PUBLIC SCHOOLS

Kit Number	Start Date	Start Time	End Date	End Time	Temp.	Facility	Building	Room	Project ID	Floor	Result
9512781	2021-01-04	9:00 am	2021-01-07	3:00 pm	70	MPS	HENRY HIGH	OFFICE 104C	HENRY HIGH	1	0.6
9512782	2021-01-04	9:00 am	2021-01-07	3:00 pm	70	MPS	HENRY HIGH	CLASS 130	HENRY HIGH	1	< 0.3
9512783	2021-01-04	9:00 am	2021-01-07	3:00 pm	70	MPS	HENRY HIGH	CLASS 132	HENRY HIGH	1	< 0.3
9512784	2021-01-04	9:00 am	2021-01-07	3:00 pm	70	MPS	HENRY HIGH	CLASS 133	HENRY HIGH	1	< 0.3
9512785	2021-01-04	9:00 am	2021-01-07	3:00 pm	70	MPS	HENRY HIGH	CLASS 134	HENRY HIGH	1	< 0.3
9512786	2021-01-04	9:00 am	2021-01-07	3:00 pm	70	MPS	HENRY HIGH	CLASS 100	HENRY HIGH	1	< 0.3
9512787	2021-01-04	9:00 am	2021-01-07	3:00 pm	70	MPS	HENRY HIGH	CLASS 100	HENRY HIGH	1	< 0.3
9512788	2021-01-04	9:00 am	2021-01-07	3:00 pm	68	MPS	HENRY HIGH	OFFICE SUITE 102	HENRY HIGH	1	< 0.3
9512789	2021-01-04	9:00 am	2021-01-07	3:00 pm	70	MPS	HENRY HIGH	OFFICE 103	HENRY HIGH	1	< 0.3
9512790	2021-01-04	9:00 am	2021-01-07	3:00 pm	70	MPS	HENRY HIGH	OFFICE 103A	HENRY HIGH	1	< 0.3
9512791	2021-01-04	9:00 am	2021-01-07	3:00 pm	70	MPS	HENRY HIGH	OFFICE 103C	HENRY HIGH	1	< 0.3
9512792	2021-01-04	9:00 am	2021-01-07	3:00 pm	70	MPS	HENRY HIGH	OFFICE 103D	HENRY HIGH	1	< 0.3
9512793	2021-01-04	9:00 am	2021-01-07	3:00 pm	70	MPS	HENRY HIGH	OFFICE 103E	HENRY HIGH	1	< 0.3
9512794	2021-01-04	9:00 am	2021-01-07	3:00 pm	70	MPS	HENRY HIGH	CLASS 150	HENRY HIGH	1	< 0.3
9512795	2021-01-04	9:00 am	2021-01-07	3:00 pm	70	MPS	HENRY HIGH	CLASS 151	HENRY HIGH	1	< 0.3
9512796	2021-01-04	9:00 am	2021-01-07	3:00 pm	70	MPS	HENRY HIGH	STAFF 152	HENRY HIGH	1	< 0.3
9512797	2021-01-04	9:00 am	2021-01-07	3:00 pm	70	MPS	HENRY HIGH	HEALTH 153	HENRY HIGH	1	< 0.3
9512798	2021-01-04	9:00 am	2021-01-07	3:00 pm	68	MPS	HENRY HIGH	COMPUTER 165	HENRY HIGH	1	< 0.3
9512799	2021-01-04	9:00 am	2021-01-07	3:00 pm	70	MPS	HENRY HIGH	OFFICE 164	HENRY HIGH	1	< 0.3
9512800	2021-01-04	9:00 am	2021-01-07	3:00 pm	70	MPS	HENRY HIGH	OFFICE 166	HENRY HIGH	1	< 0.3
9512801	2021-01-04	10:00 am	2021-01-07	3:00 pm	68	MPS	HENRY HIGH	CLASS 168	HENRY HIGH	1	< 0.3
9512802	2021-01-04	10:00 am	2021-01-07	3:00 pm	68	MPS	HENRY HIGH	CLASS 168	HENRY HIGH	1	< 0.3
9512803	2021-01-04	10:00 am	2021-01-07	3:00 pm	70	MPS	HENRY HIGH	ROOM A	HENRY HIGH	1	< 0.3
9512804	2021-01-04	10:00 am	2021-01-07	3:00 pm	70	MPS	HENRY HIGH	ROOM B	HENRY HIGH	1	< 0.3
9512805	2021-01-04	10:00 am	2021-01-07	3:00 pm	70	MPS	HENRY HIGH	ROOM C	HENRY HIGH	1	< 0.3

DIAGRAM #1 - RADON SAMPLE LOCATIONS



BASEMENT FLOOR PLAN

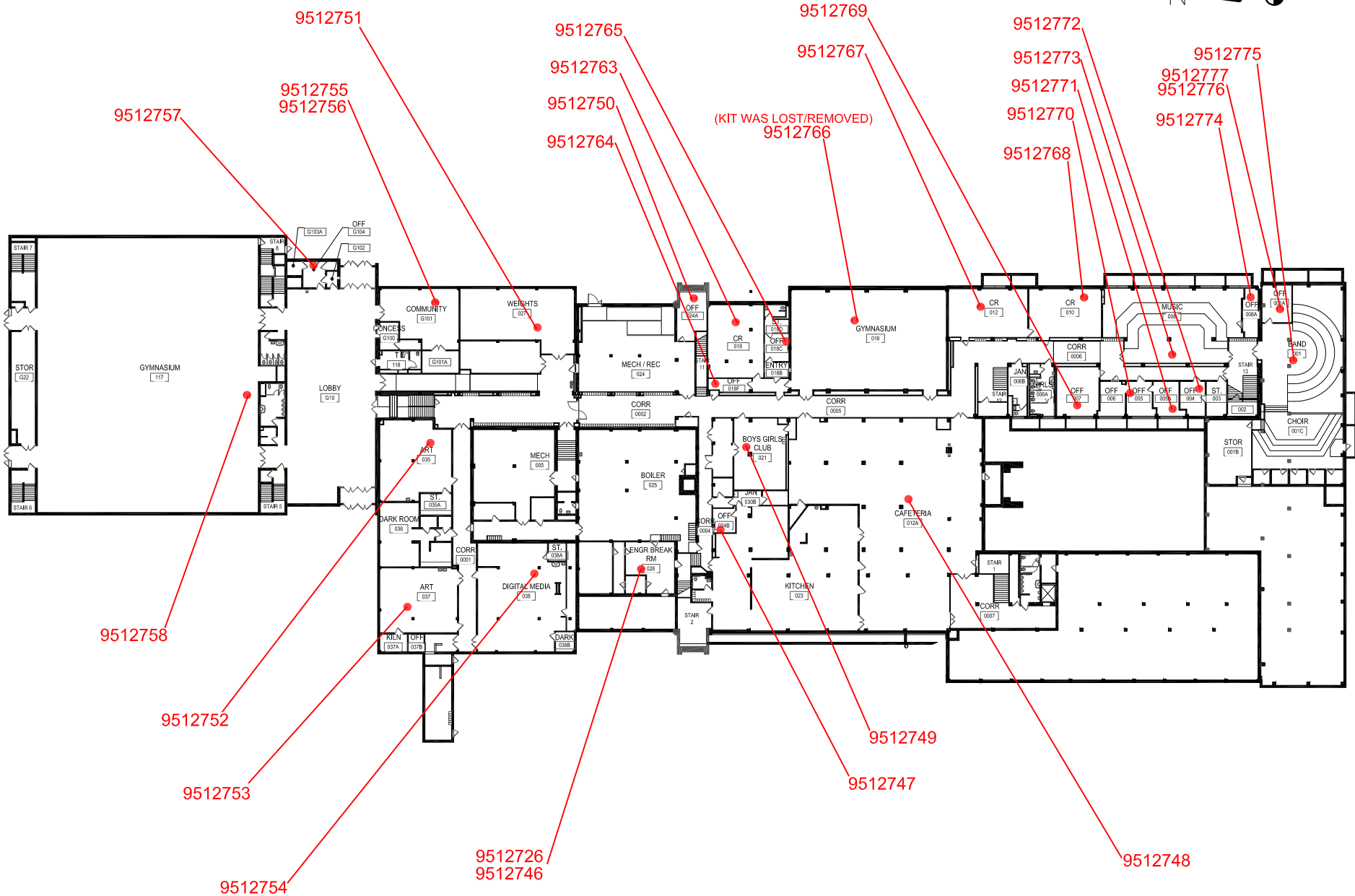
PREPARED ON: 1/4/21
 BY: ANDREW TINKLENBERG
 EH&S SAFETY SPECIALIST

HENRY HIGH SCHOOL
 4320 NEWTON AVE. N.
 MINNEAPOLIS, MN 55412

MINNEAPOLIS
 PUBLIC SCHOOLS
 Urban Education. Global Citizens.



DIAGRAM #2 - RADON SAMPLE LOCATION



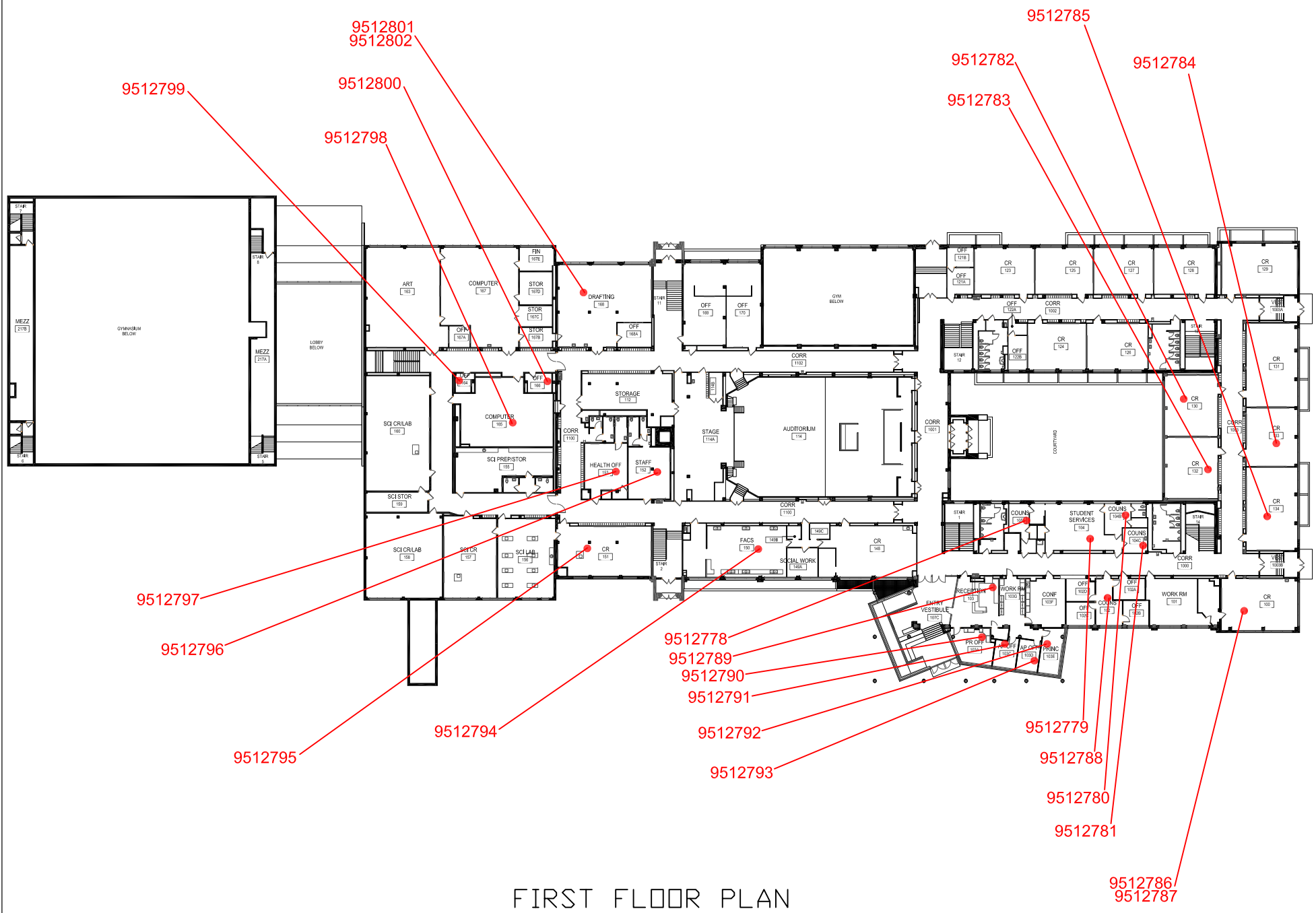
PREPARED ON: 1/4/21
 BY: ANDREW TINKLENBERG
 EH&S SAFETY SPECIALIST

HENRY HIGH SCHOOL
 4320 NEWTON AVE. N.
 MINNEAPOLIS, MN 55412



GROUND FLOOR PLAN

DIAGRAM #3 - RADON SAMPLE LOCATION



FIRST FLOOR PLAN

PREPARED ON: 1/4/21
 BY: ANDREW TINKLENBERG
 EH&S SAFETY SPECIALIST

HENRY HIGH SCHOOL
 4320 NEWTON AVE. N.
 MINNEAPOLIS, MN 55412

MINNEAPOLIS
 PUBLIC SCHOOLS
 Urban Education. Global Citizens.

