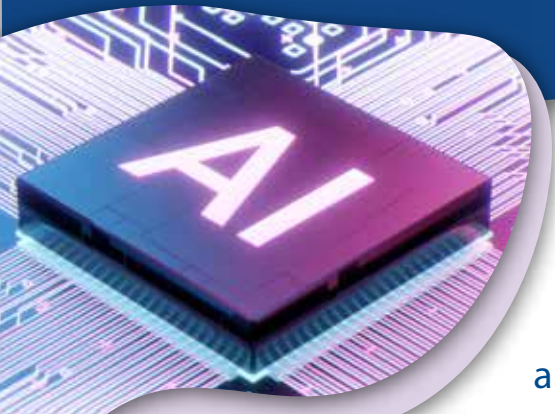


# THE IB AND ARTIFICIAL INTELLIGENCE (AI) TOOLS



International Baccalaureate®  
Baccalauréat International  
Bachillerato Internacional



## WHY IS THE IB ALLOWING STUDENTS TO USE AI TOOLS?

Students at IB World Schools are provided with a unique, challenging and diverse education. They are encouraged to drive their own learning and to think critically and challenge assumptions.

The IB understands that there will be many reservations about allowing the use of Chat GPT and other artificial intelligence tools in IB World Schools. However, we believe that these tools can provide great opportunities to enhance the skills of IB learners. Critical thinking, for example, is a skill that will grow in importance when using artificial intelligence tools. We therefore need to work with these tools, rather than against them, and embrace what the technology is capable of. The IB strongly believes that we should find appropriate ways to include such tools in teaching and assessment, which are complementary with learning aims.

## HOW CAN STUDENTS MAINTAIN ACADEMIC INTEGRITY WHEN USING AI TOOLS?

Opportunities created by AI tools reinforce that academic integrity is an ethical choice that students must make. Students cannot learn about acting with integrity by being given a list of rules for the examination room or learning a particular format for referencing. They learn by talking about what it means to act with academic integrity and seeing it role-modelled around them.

The goal of academic integrity is to make knowledge, understanding and thinking transparent. Students must understand how to correctly reference and ethically use any external information in their work, including text/images obtained from artificial intelligence (AI) tools.

For the IB, **transparency** is the key, and we expect students to give full credit to any source/material that they have used when writing and creating their own work.



## HOW DO STUDENTS CORRECTLY REFERENCE AI TOOLS?

In any type of work where an external source has been used, a citation must be included at the point of use. The inclusion of a reference at the end of the paper is not enough. The citation in a text should link to a full reference in the bibliography.

Students should be clear that if they use the text (or any other product) produced by an AI tool—by copying or paraphrasing that text or modifying an image—they must clearly reference it in the body of their work and add the reference in the bibliography.

The in-text citation should contain quotation marks using the referencing style already in use by the school, for example: *“the development of the tools and variables required for.....”* (text taken/paraphrased from ChatGPT, 2023).

The reference in the bibliography should also contain the prompt given to the AI tool and the date it generated the text, for example: OpenAI. (23 February 2023). ChatGPT response to *example* prompt about *example* topic.

## HOW ARE ARTIFICIAL INTELLIGENCE TOOLS ADDRESSED IN THE UPDATED ACADEMIC INTEGRITY POLICY?

The Academic Integrity policy has been updated and is now available on the Programme Resource Centre. There is a new appendix (6) – *Guidance on the use of artificial intelligence tools*. This section will help schools to support their students on how to use these tools ethically, in line with the IB’s principles of academic integrity.

