

LEA Name : Unionville-Chadds Ford SD
Address : 740 Unionville Road
Kennett Square , PA 19348

County : Chester
AUN Number : 124158503
LEA Type : SD

Annual Financial Report Accuracy Certification Statement

For Fiscal Year Ending
6/30/2023

Pennsylvania Department of Education
&
Office of Comptroller Operations

PDE-2056: Intermediate Unit
PDE-2057: School District, AVTS/CTC, Charter School,
and Special Program Jointure

CERTIFICATION: By signing this page I agree that the electronic data submitted is a complete and accurate statement of the financial operations and status of the local education agency for the fiscal year. It has been prepared in accordance with generally accepted accounting principles and established Commonwealth of PA reporting guidelines.



Chief School Administrator Signature

11/17/2023

Date



Board Secretary Signature

11/17/2023

Date

Joseph Deady

Contact Person

jdeady@ucfsd.net

Contact Person E-mail Address

(610)347-0970

Ext :3319

Contact Person Telephone Number

(610)347-0976

Contact Person Fax Number

Audit Certification
Annual Financial Report:
For Fiscal Year Ending **6/30/2023**
(Pursuant to PA School Code Section 218(b))

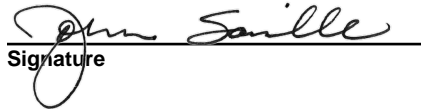
LEA Name : Unionville-Chadds Ford SD
AUN Number : 124158503
County : Chester

Audit Certification Due: 12/31/2023

This certification is applicable to the Annual Financial Report data submitted through the Consolidated Financial Reporting System (CFRS).


CERTIFICATION: By signing this page I agree that the financial statements of the school have been properly audited as noted above pursuant to Article XXIV, and in the auditor's professional opinion, the Annual Financial Report (PDE-2057) submitted through CFRS is materially consistent with the audited financial statements.

Chief School Administrator


Signature

11/17/2023
Date

Board Secretary


Signature

11/17/2023
Date

Joseph Deady

Contact Person

jdeady@ucfsd.net

Contact Person E-mail Address

(610)347-0970

Ext :3319

Contact Person Telephone Number

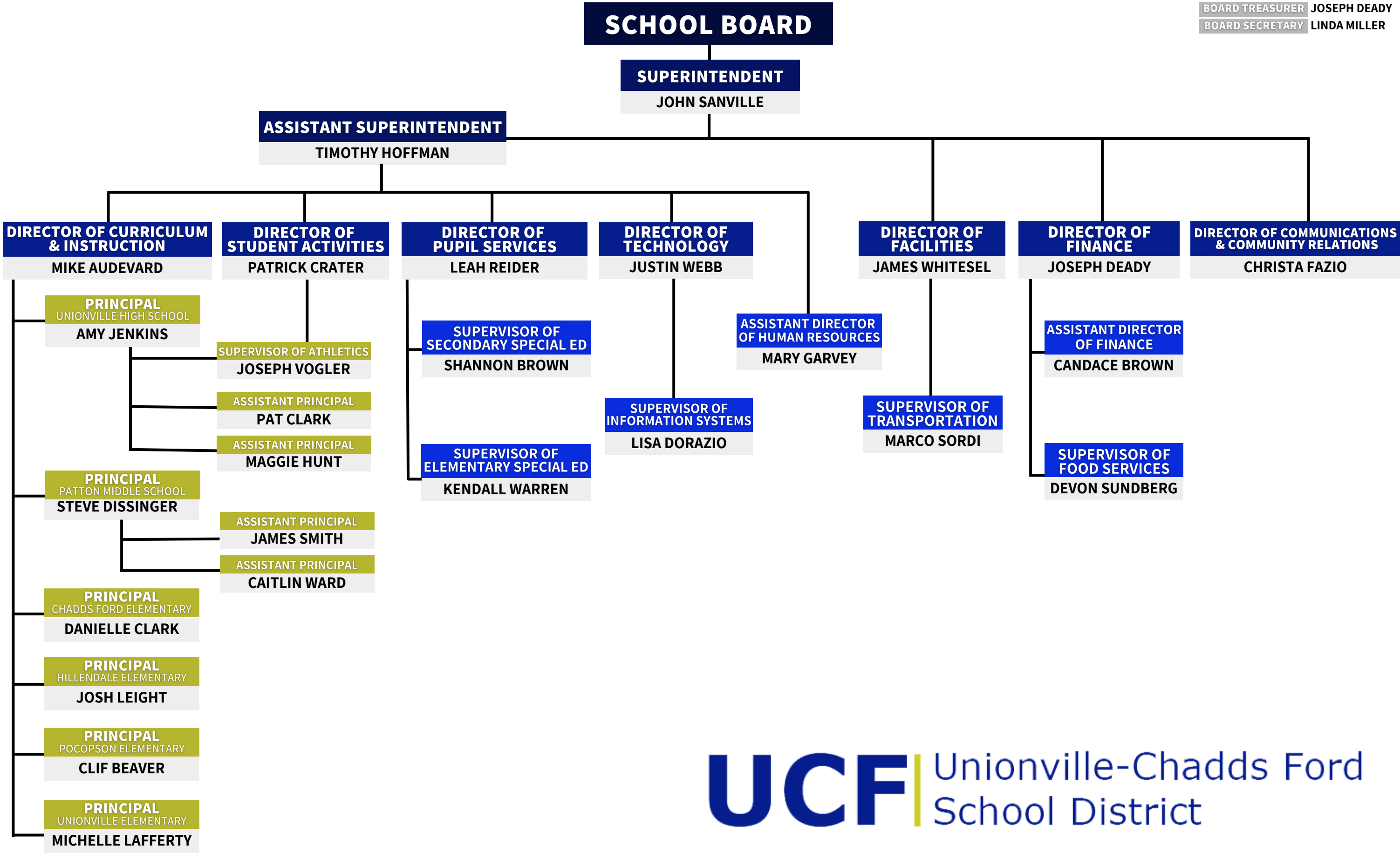
(610)347-0976

Contact Person Fax Number

ORGANIZATIONAL CHART OF

UNIONVILLE-CHADDS FORD SCHOOL DISTRICT

BOARD TREASURER JOSEPH DEADY
BOARD SECRETARY LINDA MILLER





Book	Policy Manual
Section	600 Finances
Title	GASB Statement 34
Code	622
Status	Active
Adopted	January 20, 2015
Last Revised	March 20, 2023

Purpose

The Board recognizes the need to implement the required accounting and financial reporting standards stipulated by the Pennsylvania Department of Education.

The primary objectives of implementing the Governmental Accounting Standards Board (GASB) Statement 34 are to assure compliance with state requirements, and properly account for both the financial and economic resources of the district.

Authority

Participation of the school district in any such activity shall be in accordance with Board policy. [\[1\]](#)[\[2\]](#)

Delegation of Responsibility

The responsibility to coordinate the compilation and preparation of all information necessary to implement this policy is delegated to the Director of Finance.

The designated individual shall be responsible for implementing the necessary procedures to establish and maintain a fixed asset inventory, including depreciation schedules. Depreciation shall be computed on a straight-line basis over the useful lives of the assets, using an averaging convention. Normal maintenance and repairs shall be charged to expense as incurred; major renewals and betterments that materially extend the life or increase the value of the asset shall be capitalized. A schedule of accumulated depreciation shall be consistent from year to year. The basis for depreciation, including groups of assets and useful lives, shall be in writing and submitted for review to the Board.

The Director of Finance shall prepare the required Management Discussion and Analysis (MD&A). The MD&A shall be in the form required by GASB Statement 34 and shall be submitted to the Board for approval, prior to publication.

Prior to submission of the MD&A for Board approval, the district's independent auditors shall review the MD&A, in accordance with SAS No. 52, 'Required Supplementary Information'.

Legal [1. 24 P.S. 218](#)
[2. 24 P.S. 613](#)

Governmental Accounting Standards Board, Statement No. 34

<u>Val Number</u>	<u>Description</u>	<u>Justification</u>
30116	Revenue Detail: A large amount has been reported as Earnings on Investments in Fund 32, account 6500, which should only include interest earnings of this fund. Correct or provide a brief explanation of the revenue reported. Revenue Detail 6500, Fund 32: \$25,189.41	The interest earning is large due to interest rates increasing significantly this year compared to previous years.
30410	Revenue Detail: AFR amount must equal or exceed PDE FAI System amount. 6944, AFR Rev Detail: \$16,115.18 6944, PDE FAI System: \$108,315.00	Revenue was received that was accrued to prior year.
50280	SOIN: Current Year AFR amount must equal Prior Year AFR amount. SOIN, Beg Bal, Gen Obl Bnds: \$75,415,000.00 PY Ending Bal, Gen Obl Bnds: \$76,130,000.00	The original issue amount when the bond was purchased was incorrectly entered. It was overstated by \$715,000.

Amounts Expressed in Whole Dollars		<u>General Fund</u> <u>(10)</u>	<u>Student Sponsored</u> <u>Activity Fund</u> <u>(21)</u>	<u>Public Purpose Trust</u> <u>(27)</u>	<u>Other Compt Approved</u> <u>(28)</u>	<u>Athletic / Activity</u> <u>(29)</u>
Assets And Deferred Outflows Of Resources						
Assets						
0100	Cash and Cash Equivalents	9,722,862				
0110	Investments	4,192,000				
0120	Taxes Receivable	941,242				
0130	Due From Other Funds	821,875				
0141	Due From Other Governments	4,687,792				
0142	State Revenue Receivable					
0143	Federal Revenue Receivable					
0145	Other Intergovernmental Revenue Receivable					
0146	Due from Primary Government					
0147	Due from Component Unit					
0150	Other Receivables	53,027				
0170	Inventories					
0180	Prepaid Expenses (Expenditures)	5,880				
0190	Other Current Assets					
Total Assets		\$20,424,678				
0910	Deferred Outflows of Resources					
Total Assets And Deferred Outflows Of Resources		\$20,424,678				

LEA : 124158503 Unionville-Chadds Ford SD

Printed 11/28/2023 9:35:53 AM

Amounts Expressed in Whole Dollars		<u>Capital Reserve (690.</u> <u>1850)</u> <u>(31)</u>	<u>Capital Reserve (1431)</u> <u>(32)</u>	<u>Other Capital Projects</u> <u>Fund</u> <u>(39)</u>	<u>Debt Service</u> <u>(40)</u>	<u>Permanent</u> <u>(90)</u>
Assets And Deferred Outflows Of Resources						
Assets						
0100	Cash and Cash Equivalents		666,388	9,042,261		
0110	Investments					
0120	Taxes Receivable					
0130	Due From Other Funds					
0141	Due From Other Governments					
0142	State Revenue Receivable					
0143	Federal Revenue Receivable					
0145	Other Intergovernmental Revenue Receivable					
0146	Due from Primary Government					
0147	Due from Component Unit					
0150	Other Receivables					
0170	Inventories					
0180	Prepaid Expenses (Expenditures)					
0190	Other Current Assets					
Total Assets			\$666,388	\$9,042,261		
0910	Deferred Outflows of Resources					
Total Assets And Deferred Outflows Of Resources			\$666,388	\$9,042,261		

LEA : 124158503 Unionville-Chadds Ford SD

Printed 11/28/2023 9:35:53 AM

Amounts Expressed in Whole Dollars		<u>Total Governmental</u> <u>Funds</u>
Assets And Deferred Outflows Of Resources		
Assets		
0100	Cash and Cash Equivalents	19,431,511
0110	Investments	4,192,000
0120	Taxes Receivable	941,242
0130	Due From Other Funds	821,875
0141	Due From Other Governments	4,687,792
0142	State Revenue Receivable	
0143	Federal Revenue Receivable	
0145	Other Intergovernmental Revenue Receivable	
0146	Due from Primary Government	
0147	Due from Component Unit	
0150	Other Receivables	53,027
0170	Inventories	
0180	Prepaid Expenses (Expenditures)	5,880
0190	Other Current Assets	
Total Assets		\$30,133,327
0910	Deferred Outflows of Resources	
Total Assets And Deferred Outflows Of Resources		\$30,133,327

LEA : 124158503 Unionville-Chadds Ford SD

Printed 11/28/2023 9:35:53 AM

Amounts Expressed in Whole Dollars		<u>General Fund</u> <u>(10)</u>	<u>Student Sponsored</u> <u>Activity Fund</u> <u>(21)</u>	<u>Public Purpose Trust</u> <u>(27)</u>	<u>Other Compt Approved</u> <u>(28)</u>	<u>Athletic / Activity</u> <u>(29)</u>
Liabilities And Deferred Inflows Of Resources And Fund Balances						
Liabilities						
0400	Due to Other Funds					
0411	Due to Other Governments					
0412	Due to Primary Government					
0413	Due to Component Unit					
0420	Accounts Payable	783,961				
0430	Contracts Payable					
0440	Current Portion of Long-Term Debt					
0450	Short-Term Payables					
0461	Accrued Salaries and Benefits	11,374,787				
0462	Payroll Deductions and Withholding					
0480	Unearned Revenues					
0490	Other Current Liabilities					
Total Liabilities		\$12,158,748				
0950	Deferred Inflows of Resources	597,212				
Fund Balances						
0810	Nonspendable Fund Balance	5,880				
0820	Restricted Fund Balance					
0830	Committed Fund Balance	2,971,787				
0840	Assigned Fund Balance					
0850	Unassigned Fund Balance	4,691,051				
Total Fund Balances		\$7,668,718				
Total Liabilities, Deferred Inflows Of Resources And Fund Balances		\$20,424,678				

LEA : 124158503 Unionville-Chadds Ford SD

Printed 11/28/2023 9:35:53 AM

Amounts Expressed in Whole Dollars		<u>Capital Reserve (690.</u> <u>1850)</u> <u>(31)</u>	<u>Capital Reserve (1431)</u> <u>(32)</u>	<u>Other Capital Projects</u> <u>Fund</u> <u>(39)</u>	<u>Debt Service</u> <u>(40)</u>	<u>Permanent</u> <u>(90)</u>
Liabilities And Deferred Inflows Of Resources And Fund Balances						
Liabilities						
0400	Due to Other Funds					
0411	Due to Other Governments					
0412	Due to Primary Government					
0413	Due to Component Unit					
0420	Accounts Payable			1,393,453		
0430	Contracts Payable					
0440	Current Portion of Long-Term Debt					
0450	Short-Term Payables					
0461	Accrued Salaries and Benefits					
0462	Payroll Deductions and Withholding					
0480	Unearned Revenues					
0490	Other Current Liabilities					
Total Liabilities				\$1,393,453		
0950	Deferred Inflows of Resources					
Fund Balances						
0810	Nonspendable Fund Balance					
0820	Restricted Fund Balance		666,388	7,648,808		
0830	Committed Fund Balance					
0840	Assigned Fund Balance					
0850	Unassigned Fund Balance					
Total Fund Balances			\$666,388	\$7,648,808		
Total Liabilities, Deferred Inflows Of Resources And Fund Balances			\$666,388	\$9,042,261		

LEA : 124158503 Unionville-Chadds Ford SD

Printed 11/28/2023 9:35:53 AM

Amounts Expressed in Whole Dollars		<u>Total Governmental</u> <u>Funds</u>
Liabilities And Deferred Inflows Of Resources And Fund Balances		
Liabilities		
0400 Due to Other Funds		
0411 Due to Other Governments		
0412 Due to Primary Government		
0413 Due to Component Unit		
0420 Accounts Payable	2,177,414	
0430 Contracts Payable		
0440 Current Portion of Long-Term Debt		
0450 Short-Term Payables		
0461 Accrued Salaries and Benefits	11,374,787	
0462 Payroll Deductions and Withholding		
0480 Unearned Revenues		
0490 Other Current Liabilities		
Total Liabilities	\$13,552,201	
0950 Deferred Inflows of Resources	597,212	
Fund Balances		
0810 Nonspendable Fund Balance	5,880	
0820 Restricted Fund Balance	8,315,196	
0830 Committed Fund Balance	2,971,787	
0840 Assigned Fund Balance		
0850 Unassigned Fund Balance	4,691,051	
Total Fund Balances	\$15,983,914	
Total Liabilities, Deferred Inflows Of Resources And Fund Balances	\$30,133,327	

Amounts Expressed in Whole Dollars	<u>General Fund</u> <u>(10)</u>	<u>Student Sponsored</u> <u>Activity Fund</u> <u>(21)</u>	<u>Public Purpose Trust</u> <u>(27)</u>	<u>Other Compt Approved</u> <u>(28)</u>	<u>Athletic / Activity</u> <u>(29)</u>
Revenues					
6000 Revenue from Local Sources	78,398,388				
7000 Revenue from State Sources	17,999,363				
8000 Revenue from Federal Sources	1,077,870				
Total Revenues	\$97,475,621				
Expenditures					
1000 Instruction	57,248,180				
2000 Support Services	29,840,133				
3000 Operation of Non-Instructional Services	1,959,435				
4000 Facilities Acquisition, Construction and Improvement Services					
5110 Debt Service	9,044,038				
5130 Refund of Prior Year Revenues / Receipts	10,055				
5140 Leases and Other Right-to-Use Arrangements	96,100				
Total Expenditures	\$98,197,941				
Excess (Deficiency) Of Revenues Over Expenditures	(\$722,320)				
Other Financing Sources (Uses)					
9110 Face Value of Bonds Issued					
9120 Proceeds from Refunding of Bonds					
9130 Bond Premiums					
9200 Proceeds from Extended Term Financing, Leases, and Other Right-to-Use Arrangements					
9300 Interfund Transfers - IN					
9400 Sale of or Compensation for Loss of Fixed Assets	32,633				
9710 Transfers from Component Units					
9720 Transfers from Primary Governments					
9910 Other Financing Sources Not Listed in the 9000 Series					
9990 Insurance Recoveries					
5120 Debt Service – Refunded Bonds					
5150 Bond Discounts					
5200 Interfund Transfers – Out	500,000				
5300 Transfers Out to Component Units/Primary Governments					
Total Other Financing Sources (Uses)	(\$467,367)				

Amounts Expressed in Whole Dollars		<u>Capital Reserve (690.1850)</u> <u>(31)</u>	<u>Capital Reserve (1431)</u> <u>(32)</u>	<u>Other Capital Projects</u> <u>Fund</u> <u>(39)</u>	<u>Debt Service</u> <u>(40)</u>	<u>Permanent</u> <u>(90)</u>
Revenues						
6000	Revenue from Local Sources		25,189	378,757		
7000	Revenue from State Sources					
8000	Revenue from Federal Sources					
Total Revenues			\$25,189	\$378,757		
Expenditures						
1000	Instruction					
2000	Support Services					
3000	Operation of Non-Instructional Services					
4000	Facilities Acquisition, Construction and Improvement Services		154,082	4,178,164		
5110	Debt Service					
5130	Refund of Prior Year Revenues / Receipts					
5140	Leases and Other Right-to-Use Arrangements					
Total Expenditures			\$154,082	\$4,178,164		
Excess (Deficiency) Of Revenues Over Expenditures			(\$128,893)	(\$3,799,407)		
Other Financing Sources (Uses)						
9110	Face Value of Bonds Issued					
9120	Proceeds from Refunding of Bonds					
9130	Bond Premiums					
9200	Proceeds from Extended Term Financing, Leases, and Other Right-to-Use Arrangements					
9300	Interfund Transfers - IN		500,000			
9400	Sale of or Compensation for Loss of Fixed Assets					
9710	Transfers from Component Units					
9720	Transfers from Primary Governments					
9910	Other Financing Sources Not Listed in the 9000 Series					
9990	Insurance Recoveries					
5120	Debt Service – Refunded Bonds					
5150	Bond Discounts					
5200	Interfund Transfers – Out					
5300	Transfers Out to Component Units/Primary Governments					
Total Other Financing Sources (Uses)			\$500,000			

Amounts Expressed in Whole Dollars		<u>Total Governmental Funds</u>
Revenues		
6000	Revenue from Local Sources	78,802,334
7000	Revenue from State Sources	17,999,363
8000	Revenue from Federal Sources	1,077,870
Total Revenues		\$97,879,567
Expenditures		
1000	Instruction	57,248,180
2000	Support Services	29,840,133
3000	Operation of Non-Instructional Services	1,959,435
4000	Facilities Acquisition, Construction and Improvement Services	4,332,246
5110	Debt Service	9,044,038
5130	Refund of Prior Year Revenues / Receipts	10,055
5140	Leases and Other Right-to-Use Arrangements	96,100
Total Expenditures		\$102,530,187
Excess (Deficiency) Of Revenues Over Expenditures		(\$4,650,620)
Other Financing Sources (Uses)		
9110	Face Value of Bonds Issued	
9120	Proceeds from Refunding of Bonds	
9130	Bond Premiums	
9200	Proceeds from Extended Term Financing, Leases, and Other Right-to-Use Arrangements	
9300	Interfund Transfers - IN	500,000
9400	Sale of or Compensation for Loss of Fixed Assets	32,633
9710	Transfers from Component Units	
9720	Transfers from Primary Governments	
9910	Other Financing Sources Not Listed in the 9000 Series	
9990	Insurance Recoveries	
5120	Debt Service – Refunded Bonds	
5150	Bond Discounts	
5200	Interfund Transfers – Out	500,000
5300	Transfers Out to Component Units/Primary Governments	
Total Other Financing Sources (Uses)		\$32,633

Amounts Expressed in Whole Dollars		<u>General Fund</u> <u>(10)</u>	<u>Student Sponsored</u> <u>Activity Fund</u> <u>(21)</u>	<u>Public Purpose Trust</u> <u>(27)</u>	<u>Other Compt Approved</u> <u>(28)</u>	<u>Athletic / Activity</u> <u>(29)</u>
Special And Extraordinary Items						
9920	Special Items – Gains					
9930	Extraordinary Items – Gains					
5520	Special Items – Losses					
5530	Extraordinary Items – Losses					
Net Change In Fund Balances		(\$1,189,687)				
Fund Balance						
0001	Fund Balance - Beginning of Fiscal Year	8,858,404				
Fund Balance - End Of Year		\$7,668,717				

Amounts Expressed in Whole Dollars		<u>Capital Reserve (690.</u> <u>1850)</u> <u>(31)</u>	<u>Capital Reserve (1431)</u> <u>(32)</u>	<u>Other Capital Projects</u> <u>Fund</u> <u>(39)</u>	<u>Debt Service</u> <u>(40)</u>	<u>Permanent</u> <u>(90)</u>
Special And Extraordinary Items						
9920	Special Items – Gains					
9930	Extraordinary Items – Gains					
5520	Special Items – Losses					
5530	Extraordinary Items – Losses					
Net Change In Fund Balances			\$371,107	(\$3,799,407)		
Fund Balance						
0001	Fund Balance - Beginning of Fiscal Year		295,279	11,448,216		
Fund Balance - End Of Year			\$666,386	\$7,648,809		

Amounts Expressed in Whole Dollars		<u>Total Governmental</u> <u>Funds</u>
Special And Extraordinary Items		
9920	Special Items – Gains	
9930	Extraordinary Items – Gains	
5520	Special Items – Losses	
5530	Extraordinary Items – Losses	
Net Change In Fund Balances		(\$4,617,987)
Fund Balance		
0001	Fund Balance - Beginning of Fiscal Year	20,601,899
Fund Balance - End Of Year		\$15,983,912

Amounts Expressed in Whole Dollars		<u>Food Service</u> <u>(51)</u>	<u>Child Care</u> <u>Operations</u> <u>(52)</u>	<u>Other Enterprise</u> <u>(58)</u>	<u>TOTAL</u>	<u>Internal Service</u> <u>(60)</u>
Assets And Deferred Outflows Of Resources						
Current Assets						
0100	Cash and Cash Equivalents	725,063			725,063	3,153,087
0110	Investments					
0130	Due From Other Funds					
0141	Due From Other Governments	64,751			64,751	
0142	State Revenue Receivable					
0143	Federal Revenue Receivable					
0146	Due from Primary Government					
0147	Due from Component Unit					
0150	Other Receivables					
0170	Inventories	19,751			19,751	
0180	Prepaid Expenses (Expenditures)					
0190	Other Current Assets					211,128
Total Current Assets		\$809,565			\$809,565	\$3,364,215
Noncurrent Assets						
0211	Land					
0212	Site Improvements (Net)					
0220	Buildings and Building Improvements (Net)					
0230	Tangible Property and Intangible Right-To-Use Assets (Net)					
0250	Construction in Progress					
0260	Long Term Prepayments					
0290	Other Noncurrent Assets	165,080			165,080	
Total Noncurrent Assets		\$165,080			\$165,080	
0910	Deferred Outflows of Resources	286,928			286,928	
Total Assets And Deferred Outflows Of Resources		\$1,261,573			\$1,261,573	\$3,364,215

LEA : 124158503 Unionville-Chadds Ford SD

Printed 11/28/2023 9:36:05 AM

Amounts Expressed in Whole Dollars	Food Service (51)	Child Care Operations (52)	Other Enterprise (58)	TOTAL	Internal Service (60)
Liabilities And Deferred Inflows Of Resources And Net Position					
Current Liabilities					
0400 Due to Other Funds	308,454			308,454	513,421
0411 Due to Other Governments					
0413 Due to Component Unit					
0420 Accounts Payable					
0430 Contracts Payable					
0440 Current Portion of Long-Term Debt					
0450 Short-Term Payables					
0461 Accrued Salaries and Benefits					986,579
0462 Payroll Deductions and Withholding					
0480 Unearned Revenues	91,629			91,629	
0490 Other Current Liabilities					
Total Current Liabilities	\$400,083			\$400,083	\$1,500,000
Noncurrent Liabilities					
0510 Bonds Payable					
0520 Extended-Term Financing Agreements Payable					
0530 Lease and Other Right-To-Use Obligations					
0540 Accumulated Compensated Absences					
0550 Authority Lease Obligations					
0560 Other Post-Employment Benefits (OPEB)	99,373			99,373	
0570 Net Pension Liability	1,703,203			1,703,203	
0599 Other Noncurrent Liabilities					
Total Noncurrent Liabilities	\$1,802,576			\$1,802,576	
Total Liabilities	\$2,202,659			\$2,202,659	\$1,500,000
0950 Deferred Inflows of Resources	91,804			91,804	
Net Position					
0791 Net Investment in Capital Assets	165,080			165,080	
0008 Restricted Net Position (0792 – 0798)					
0799 Unrestricted Net Position	(1,197,970)			(1,197,970)	1,864,215
Total Net Position	(\$1,032,890)			(\$1,032,890)	\$1,864,215
Total Liabilities And Deferred Inflows Of Resources And Net Position	\$1,261,573			\$1,261,573	\$3,364,215

Amounts Expressed in Whole Dollars		<u>Food Service</u> <u>(51)</u>	<u>Child Care Operations</u> <u>(52)</u>	<u>Other Enterprise</u> <u>(58)</u>	<u>TOTAL</u>	<u>Internal Service</u> <u>(60)</u>
Operating Revenues						
6600	Food Service Revenue	1,364,802			1,364,802	
0071	Charges for Services					9,437,150
0072	Other Operating Revenue					
Total Operating Revenues		\$1,364,802			\$1,364,802	\$9,437,150
Operating Expenses						
100	Personnel Services – Salaries	643,858			643,858	
200	Personnel Services – Employee Benefits	301,340			301,340	10,929,086
300	Purchased Professional and Technical Services					8,064
400	Purchased Property Services					
500	Other Purchased Services					
600	Supplies	1,033,858			1,033,858	
740	Depreciation	59,947			59,947	
770	Amortization Expense					
810	Dues and Fees					
880	Refunds of Prior Years' Receipts					
890	Miscellaneous Expenditures					
Total Operating Expenses		\$2,039,003			\$2,039,003	\$10,937,150
Operating Income (Loss)		(\$674,201)			(\$674,201)	(\$1,500,000)
Non Operating Revenues (Expenses)						
6500	Earnings on Investments	11,215			11,215	121,333
6830	Federal Revenue from Intermediary Sources					
6920	Contributions and Donations from Private Sources					
6930	Gains or Losses on Sale of Fixed Assets					
6991	Refunds of a Prior Year Expenditure					
7000	Revenue from State Sources	227,866			227,866	
8000	Revenue from Federal Sources	514,134			514,134	
9990	Insurance Recoveries					
820	Claims and Judgments Against the LEA					
830	Interest					
TOTAL Non Operating Revenues (Expenses)		\$753,215			\$753,215	\$121,333
Income (Loss) Before Contributions And Transfers		\$79,014			\$79,014	(\$1,378,667)

Amounts Expressed in Whole Dollars	<u>Food Service</u> <u>(51)</u>	<u>Child Care Operations</u> <u>(52)</u>	<u>Other Enterprise</u> <u>(58)</u>	<u>TOTAL</u>	<u>Internal Service</u> <u>(60)</u>
Contributions, Transfers, and Special and Extraordinary Items					
5200 Interfund Transfers – Out					
5300 Transfers Out to Component Units/Primary Governments					
5520 Special Items – Losses					
5530 Extraordinary Items – Losses					
9300 Interfund Transfers - IN					
9500 Capital Contributions					
9700 Transfers IN From Component Units/Primary Governments					
9920 Special Items – Gains					
9930 Extraordinary Items – Gains					
Change In Net Position	\$79,014			\$79,014	(\$1,378,667)
0002 Net Position - Beginning of Fiscal Year	(1,111,904)			(1,111,904)	3,242,882
0003 Accounting Changes / Residual Equity Transfers					
Net Position - End Of Year	(\$1,032,890)			(\$1,032,890)	\$1,864,215

LEA : 124158503 Unionville-Chadds Ford SD

Printed 11/28/2023 9:36:16 AM

Amounts Expressed in Whole Dollars		<u>Food Service</u> <u>(51)</u>	<u>Child Care Operations</u> <u>(52)</u>	<u>Other Enterprise</u> <u>(58)</u>	<u>TOTAL</u>	<u>Internal Service(60)</u>
Cash Flows From Operating Activities						
0011	Cash Receipts From Users	1,374,501			1,374,501	
0012	Cash Receipts From Assessments Made to Other Funds					9,527,104
0013	Cash Receipts From Earnings on Investments					
0014	Cash Receipts From Other Operating Revenue					
0015	Cash Payments To Employees For Services	642,596			642,596	
0016	Cash Payments For Insurance Claims					10,719,040
0017	Cash Payments To Suppliers For Goods and Services	923,732			923,732	
0018	Cash Payments For Other Operating Expenses					8,064
Net Cash Provided By (Used For) Operating Activities		(\$191,827)			(\$191,827)	(\$1,200,000)
Cash Flows From Non-Capital Financing Activities						
0021	Receipts From Local Sources - 6000					
0022	Receipts From State Sources - 7000	225,024			225,024	
0023	Receipts From Federal Sources -8000	474,208			474,208	
0024	Notes and Loans Received (Repaid)					
0025	Interest Paid on Notes/Loans - 5100-830					
0026	Operating Transfers In (Out)/Residual Equity Trans					
0027	Operating Transfers In (Out) Primary Government / Comp Unit					
0028	Receipts From Refund of Prior Year Expenditures - 6991					
0029	Special and Extraordinary Gains (losses)					
0030	Receipts from Insurance Recoveries -9990					
Net Cash Prov By (Used for) Non-Capital Financing Activities		\$699,232			\$699,232	
Cash Flows From Capital and Related Financing Activities						
0031	Payments For Fac Acq, Const, and Imp - 4000					
0032	Gain / (Loss) on Sale of Fixed Assets - 6930					
0033	Proceeds From Extended Term Financing - 9200					
0034	Principal Paid on Financing Agreements					
0035	Interest Paid on Financing Agreements - 5100-830					
0036	(Inc) Dec in Contributed Capital					
Net Cash Prov By (Used for) Capital and Related Financing Activities						
Cash Flows From Investing Activities						
0041	Earnings on Investments - 6500	11,215			11,215	121,333
0042	Purchase of Inv Securities / Deposits to Inv Pools					
0043	Receipts From Investment Pool Withdrawals					
0044	Proceeds from Sale and Maturity of Inv Securities					

LEA : 124158503 Unionville-Chadds Ford SD

Printed 11/28/2023 9:36:16 AM

Page - 2 of 4

0045 Loans Received (Paid)

Net Cash Prov By (Used for) Investing Activities	\$11,215	\$11,215	\$121,333
--	----------	----------	-----------

LEA : 124158503 Unionville-Chadds Ford SD

Printed 11/28/2023 9:36:16 AM

	Food Service (51)	Child Care Operations (52)	Other Enterprise (58)	TOTAL	Internal Service (60)
Net Increase (Decrease) in Cash Flows	518,620			518,620	(1,078,667)
0004 Cash and Cash Equivalents Beginning of Year	206,443			206,443	1,231,754
Cash and Cash Equivalents at Year End	\$725,063			\$725,063	\$153,087
Reconciliation of Operating Income (Loss) To Net Cash Provided by (Used For) Operating Activities					
0005 Operating Income (Loss) per REP	(674,201)			(674,201)	(1,500,000)
Adjustments					
0051 Depreciation and Net Amortization	59,947			59,947	
0052 Provision for Uncollectible Accounts					
0053 Other Adjustments	113,314			113,314	
Effect of Changes in Assets, Liabilities, Deferred Outflows and Deferred Inflows					
0054 (Inc) Dec In Accounts Receivable (0120-0150)					
0055 Advances to Other Funds					
0056 (Inc) Dec in Inventories (0170)	(3,188)			(3,188)	
0057 (Inc) Dec in Prepaid Expenses (0180)					
0058 (Inc) Dec in Other Current or Noncurrent Assets	158,259			158,259	
0064 Deferred Outflows (0910)	42,668			42,668	
0059 Inc (Dec) in Accounts Payable (0400-0450)					
0060 Inc (Dec) in Accrued Salaries/Benefits (0461)					210,046
0065 Inc (Dec) in Net Pension Liabilities (0570)	67,954			67,954	
0066 Inc (Dec) in Other Postemp Benefit Oblig (0560)	(45,334)			(45,334)	
0061 Inc (Dec) in Payroll Deductions/Withholding (0462)					
0062 Inc (Dec) in Unearned Revenue (0480)	9,699			9,699	
0063 Inc (Dec) in Other Current or Noncurrent Liabilities	308,454			308,454	89,954
0067 Deferred Inflows (0950)	(229,399)			(229,399)	
Total Adjustments	\$482,374			\$482,374	\$300,000
Cash Provided By (Used for) Total	(\$191,827)			(\$191,827)	(\$1,200,000)

COMBINED STATEMENT OF CASH FLOWS
SCHEDULE OF NONCASH INVESTING, CAPITAL, AND FINANCING ACTIVITIES

Explanation of Transaction and Balance Sheet Effect	Amount
Total	

LEA : 124158503 Unionville-Chadds Ford SD

Printed 11/28/2023 9:36:18 AM

Amounts Expressed in Whole Dollars		<u>Private Purpose Trust</u> <u>(71)</u>	<u>Investment Trust</u> <u>(72)</u>	<u>Pension Trust</u> <u>(73)</u>	<u>Student Activity Custodial</u> <u>(81)</u>
Assets And Deferred Outflows Of Resources					
Assets					
0100	Cash and Cash Equivalents	23,434			360,920
0110	Investments				
0130	Due From Other Funds				
0140	Due from Other Governments, Primary Government and Component Units				
0150	Other Receivables				
0170	Inventories				
0180	Prepaid Expenses (Expenditures)				
0190	Other Current Assets				
0220	Buildings and Building Improvements (Net)				
0230	Tangible Property and Intangible Right-To-Use Assets (Net)				
Total Assets		\$23,434			\$360,920
0910	Deferred Outflows of Resources				
Total Assets And Deferred Outflows Of Resources		\$23,434			\$360,920

LEA : 124158503 Unionville-Chadds Ford SD

Printed 11/28/2023 9:36:18 AM

Amounts Expressed in Whole Dollars		<u>Other Custodial</u> <u>(89)</u>	<u>Fiduciary Component Units</u> <u>(98)</u>	<u>Total Fiduciary Funds</u>
Assets And Deferred Outflows Of Resources				
Assets				
0100	Cash and Cash Equivalents			384,354
0110	Investments			
0130	Due From Other Funds			
0140	Due from Other Governments, Primary Government and Component Units			
0150	Other Receivables			
0170	Inventories			
0180	Prepaid Expenses (Expenditures)			
0190	Other Current Assets			
0220	Buildings and Building Improvements (Net)			
0230	Tangible Property and Intangible Right-To-Use Assets (Net)			
Total Assets				\$384,354
0910	Deferred Outflows of Resources			
Total Assets And Deferred Outflows Of Resources				\$384,354

LEA : 124158503 Unionville-Chadds Ford SD

Printed 11/28/2023 9:36:18 AM

Amounts Expressed in Whole Dollars		<u>Private Purpose Trust</u>	<u>Investment Trust</u>	<u>Pension Trust</u>	<u>Student Activity Custodial</u>
		<u>(71)</u>	<u>(72)</u>	<u>(73)</u>	<u>(81)</u>
Liabilities, Deferred Inflows Of Resources And Net Position					
Liabilities					
0400	Due to Other Funds				
0410	Due to Other Governments, Primary Government and Component Units				
0420	Accounts Payable				
0430	Contracts Payable				
0450	Short-Term Payables				
0460	Payroll Accruals and Withholdings				
0480	Unearned Revenues				
0490	Other Current Liabilities				
Total Liabilities					
0950	Deferred Inflows of Resources				
Net Position					
0791	Net Investment in Capital Assets				
0009	Restricted Net Position (0792 – 0798)	23,434			360,920
0799	Unrestricted Net Position				
Total Net Position		\$23,434			\$360,920
Total Liabilities, Deferred Inflows Of Resources And Net Position		\$23,434			\$360,920

LEA : 124158503 Unionville-Chadds Ford SD

Printed 11/28/2023 9:36:18 AM

Amounts Expressed in Whole Dollars		<u>Other Custodial</u> <u>(89)</u>	<u>Fiduciary Component Units</u> <u>(98)</u>	<u>Total Fiduciary Funds</u>
Liabilities, Deferred Inflows Of Resources And Net Position				
Liabilities				
0400	Due to Other Funds			
0410	Due to Other Governments, Primary Government and Component Units			
0420	Accounts Payable			
0430	Contracts Payable			
0450	Short-Term Payables			
0460	Payroll Accruals and Withholdings			
0480	Unearned Revenues			
0490	Other Current Liabilities			
Total Liabilities				
0950	Deferred Inflows of Resources			
Net Position				
0791	Net Investment in Capital Assets			
0009	Restricted Net Position (0792 – 0798)			384,354
0799	Unrestricted Net Position			
Total Net Position				\$384,354
Total Liabilities, Deferred Inflows Of Resources And Net Position				\$384,354

LEA : 124158503 Unionville-Chadds Ford SD

Printed 11/28/2023 9:36:20 AM

Amounts Expressed in Whole Dollars	<u>Private Purpose Trust</u> <u>(71)</u>	<u>Investment Trust</u> <u>(72)</u>	<u>Pension Trust</u> <u>(73)</u>	<u>Student Activity</u> <u>Custodial</u> <u>(81)</u>	<u>Other Custodial</u> <u>(89)</u>	<u>Fiduciary Component</u> <u>Units</u> <u>(98)</u>
Additions						
0091 Gifts and Contributions	53,605			684,312		
0095 Net Investment Earnings						
0092 Other Additions						
Deductions						
0093 Scholarships Awarded	59,301					
0094 Other Deductions				731,343		
Change In Net Position	(\$5,696)			(\$47,031)		
0006 Net Position – Beginning of Fiscal Year	29,130			407,951		
0007 Net Position Held in Trust for Pension Benefits						
Net Position - End of Fiscal Year	\$23,434			\$360,920		

LEA : 124158503 Unionville-Chadds Ford SD

Printed 11/28/2023 9:36:20 AM

Amounts Expressed in Whole Dollars		<u>Total Fiduciary</u> <u>Funds</u>
Additions		
0091	Gifts and Contributions	737,917
0095	Net Investment Earnings	
0092	Other Additions	
Deductions		
0093	Scholarships Awarded	59,301
0094	Other Deductions	731,343
Change In Net Position		(\$52,727)
0006	Net Position – Beginning of Fiscal Year	437,081
0007	Net Position Held in Trust for Pension Benefits	
Net Position - End of Fiscal Year		\$384,354

	Revenue Reported In Current Year	Current Year Tax Accrual	Prior Year Tax Accrual	Taxes Collected In Current Year
Revenue from Local Sources				
6111 Current Real Estate Taxes	72,329,549.11			72,329,549.11
6112 Interim Real Estate Taxes	311,027.39	11,973.00	8,822.00	307,876.39
6113 Public Utility Realty Taxes	69,016.60			69,016.60
6153 Current Act 511 Real Estate Transfer Taxes	1,672,099.03	173,273.88	220,292.00	1,719,117.15
6411 Delinquent Real Estate Taxes	1,369,984.71	158,783.22	169,858.00	1,381,059.49
6500 Earnings on Investments	1,466,427.94			
6700 Revenues from LEA Activities	375,372.73			
6832 Federal IDEA Revenue Received as Pass Through	572,193.18			
6910 Rentals	121,584.90			
6941 Regular Day School Tuition	16,300.00			
6944 Receipts from Other LEAs in Pennsylvania - Education	16,115.18			
6949 Other Tuition from Patrons	10,740.00			
6992 Energy Efficiency Revenues and Incentives	25,397.44			
6999 Other Revenues Not Specified Above	42,579.61			
TOTAL Revenue from Local Sources	\$78,398,387.82	\$344,030.10	\$398,972.00	\$75,806,618.74

	Revenue Reported In Current Year			
<u>Revenue from State Sources</u>				
7111 Basic Education Funding-Formula	3,879,738.34			
7112 Basic Education Funding-Social Security	1,594,450.17			
7160 Tuition for Orphans Subsidy	2,024.80			
7240 Driver Education - Student	945.00			
7250 Migratory Children	120.00			
7271 Special Education funds for School-Aged Pupils	1,939,652.78			
7311 Pupil Transportation Subsidy	428,766.04			
7312 Nonpublic and Charter School Pupil Transportation Subsidy	77,385.00			
7320 Rental and Sinking Fund Payments / Building Reimbursement Subsidy	301,358.22			
7330 Health Services (Medical, Dental, Nurse, Act 25)	78,171.63			
7340 State Property Tax Reduction Allocation	1,876,394.39			
7362 School Mental Health & Safety and Security Grants	63,336.00			
7505 Ready to Learn Block Grant	127,325.00			
7820 State Share of Retirement Contributions	7,629,695.61			
TOTAL Revenue from State Sources	\$17,999,362.98			

	Revenue Reported In Current Year			
<u>Revenue from Federal Sources</u>				
8514 Title I - Improving the Academic Achievement of the Disadvantaged	93,238.44			
8515 Title II - Preparing, Training, and Recruiting High Quality Teachers and Principals	33,698.20			
8516 Title III - Language Instruction for English Learners and Immigrant Students	7,344.04			
8517 Title IV - 21st Century Schools	10,000.00			
8744 ARP ESSER - Elementary and Secondary School Emergency Relief Fund	267,455.00			
8751 ARP ESSER Learning Loss	37,834.00			
8752 ARP ESSER Summer Programs	8,192.00			
8753 ARP ESSER Afterschool Programs	4,021.00			
8810 School-Based Access Medicaid Reimbursement Program (SBAP) Reimbursements (Access)	605,495.50			
8820 Medical Assistance Reimbursement for Administrative Claiming (Quarterly) Program	10,592.12			
TOTAL Revenue from Federal Sources	\$1,077,870.30			

	Revenue Reported In Current Year			
<u>Other Financing Sources</u>				
9400 Sale of or Compensation for Loss of Fixed Assets	32,633.00			
TOTAL Other Financing Sources	\$32,633.00			
TOTAL FROM ALL SOURCES	\$97,508,254.10	\$344,030.10	\$398,972.00	\$75,806,618.74

LEA : 124158503 Unionville-Chadds Ford SD

Printed 11/28/2023 9:36:23 AM

	<u>General Fund (10)</u>	<u>Student Sponsored Activity Fund (21)</u>	<u>Public Purpose Trust (27)</u>	<u>Other Compt Approved (28)</u>	<u>Athletic / Activity (29)</u>	<u>Capital Reserve (690, 1850) (31)</u>
6000 Revenue from Local Sources						
6111 Current Real Estate Taxes	72,329,549.11					
6112 Interim Real Estate Taxes	311,027.39					
6113 Public Utility Realty Taxes	69,016.60					
6153 Current Act 511 Real Estate Transfer Taxes	1,672,099.03					
6411 Delinquent Real Estate Taxes	1,369,984.71					
6500 Earnings on Investments	1,466,427.94					
6700 Revenues from LEA Activities	375,372.73					
6832 Federal IDEA Revenue Received as Pass Through	572,193.18					
6910 Rentals	121,584.90					
6941 Regular Day School Tuition	16,300.00					
6944 Receipts from Other LEAs in Pennsylvania - Education	16,115.18					
6949 Other Tuition from Patrons	10,740.00					
6992 Energy Efficiency Revenues and Incentives	25,397.44					
6999 Other Revenues Not Specified Above	42,579.61					
6000 Total Revenue from Local Sources	\$78,398,387.82					
7000 Revenue from State Sources						
7111 Basic Education Funding-Formula	3,879,738.34					
7112 Basic Education Funding-Social Security	1,594,450.17					
7160 Tuition for Orphans Subsidy	2,024.80					
7240 Driver Education - Student	945.00					
7250 Migratory Children	120.00					
7271 Special Education funds for School-Aged Pupils	1,939,652.78					
7311 Pupil Transportation Subsidy	428,766.04					
7312 Nonpublic and Charter School Pupil Transportation Subsidy	77,385.00					
7320 Rental and Sinking Fund Payments / Building Reimbursement Subsidy	301,358.22					
7330 Health Services (Medical, Dental, Nurse, Act 25)	78,171.63					
7340 State Property Tax Reduction Allocation	1,876,394.39					
7362 School Mental Health & Safety and Security Grants	63,336.00					
7505 Ready to Learn Block Grant	127,325.00					
7820 State Share of Retirement Contributions	7,629,695.61					
7000 Total Revenue from State Sources	\$17,999,362.98					
8000 Revenue from Federal Sources						
8514 Title I - Improving the Academic Achievement of the Disadvantaged	93,238.44					

LEA : 124158503 Unionville-Chadds Ford SD

Printed 11/28/2023 9:36:23 AM

	<u>Capital Reserve</u> <u>(1431) (32)</u>	<u>Other Capital</u> <u>Projects Fund (39)</u>	<u>Debt Service (40)</u>	<u>Permanent (90)</u>	<u>Total</u>
6000 Revenue from Local Sources					
6111 Current Real Estate Taxes					72,329,549.11
6112 Interim Real Estate Taxes					311,027.39
6113 Public Utility Realty Taxes					69,016.60
6153 Current Act 511 Real Estate Transfer Taxes					1,672,099.03
6411 Delinquent Real Estate Taxes					1,369,984.71
6500 Earnings on Investments	25,189.41	378,757.17			1,870,374.52
6700 Revenues from LEA Activities					375,372.73
6832 Federal IDEA Revenue Received as Pass Through					572,193.18
6910 Rentals					121,584.90
6941 Regular Day School Tuition					16,300.00
6944 Receipts from Other LEAs in Pennsylvania - Education					16,115.18
6949 Other Tuition from Patrons					10,740.00
6992 Energy Efficiency Revenues and Incentives					25,397.44
6999 Other Revenues Not Specified Above					42,579.61
6000 Total Revenue from Local Sources	\$25,189.41	\$378,757.17			\$78,802,334.40
7000 Revenue from State Sources					
7111 Basic Education Funding-Formula					3,879,738.34
7112 Basic Education Funding-Social Security					1,594,450.17
7160 Tuition for Orphans Subsidy					2,024.80
7240 Driver Education - Student					945.00
7250 Migratory Children					120.00
7271 Special Education funds for School-Aged Pupils					1,939,652.78
7311 Pupil Transportation Subsidy					428,766.04
7312 Nonpublic and Charter School Pupil Transportation Subsidy					77,385.00
7320 Rental and Sinking Fund Payments / Building Reimbursement Subsidy					301,358.22
7330 Health Services (Medical, Dental, Nurse, Act 25)					78,171.63
7340 State Property Tax Reduction Allocation					1,876,394.39
7362 School Mental Health & Safety and Security Grants					63,336.00
7505 Ready to Learn Block Grant					127,325.00
7820 State Share of Retirement Contributions					7,629,695.61
7000 Total Revenue from State Sources					\$17,999,362.98
8000 Revenue from Federal Sources					
8514 Title I - Improving the Academic Achievement of the Disadvantaged					93,238.44

LEA : 124158503 Unionville-Chadds Ford SD

Printed 11/28/2023 9:36:23 AM

	<u>General Fund (10)</u>	<u>Student Sponsored Activity Fund (21)</u>	<u>Public Purpose Trust (27)</u>	<u>Other Compt Approved (28)</u>	<u>Athletic / Activity (29)</u>	<u>Capital Reserve (690, 1850) (31)</u>
8000 Revenue from Federal Sources						
8515 Title II - Preparing, Training, and Recruiting High Quality Teachers and Principals	33,698.20					
8516 Title III - Language Instruction for English Learners and Immigrant Students	7,344.04					
8517 Title IV - 21st Century Schools	10,000.00					
8744 ARP ESSER - Elementary and Secondary School Emergency Relief Fund	267,455.00					
8751 ARP ESSER Learning Loss	37,834.00					
8752 ARP ESSER Summer Programs	8,192.00					
8753 ARP ESSER Afterschool Programs	4,021.00					
8810 School-Based Access Medicaid Reimbursement Program (SBAP) Reimbursements (Access)	605,495.50					
8820 Medical Assistance Reimbursement for Administrative Claiming (Quarterly) Program	10,592.12					
8000 Total Revenue from Federal Sources	\$1,077,870.30					
9000 Other Financing Sources						
9310 General Fund Transfers						
9400 Sale of or Compensation for Loss of Fixed Assets	32,633.00					
9000 Total Other Financing Sources	\$32,633.00					
Total From All Sources	\$97,508,254.10					

LEA : 124158503 Unionville-Chadds Ford SD

Printed 11/28/2023 9:36:23 AM

	<u>Capital Reserve</u> <u>(1431) (32)</u>	<u>Other Capital</u> <u>Projects Fund (39)</u>	<u>Debt Service (40)</u>	<u>Permanent (90)</u>	<u>Total</u>
8000 Revenue from Federal Sources					
8515 Title II - Preparing, Training, and Recruiting High Quality Teachers and Principals					33,698.20
8516 Title III - Language Instruction for English Learners and Immigrant Students					7,344.04
8517 Title IV - 21st Century Schools					10,000.00
8744 ARP ESSER - Elementary and Secondary School Emergency Relief Fund					267,455.00
8751 ARP ESSER Learning Loss					37,834.00
8752 ARP ESSER Summer Programs					8,192.00
8753 ARP ESSER Afterschool Programs					4,021.00
8810 School-Based Access Medicaid Reimbursement Program (SBAP) Reimbursements (Access)					605,495.50
8820 Medical Assistance Reimbursement for Administrative Claiming (Quarterly) Program					10,592.12
8000 Total Revenue from Federal Sources					\$1,077,870.30
9000 Other Financing Sources					
9310 General Fund Transfers	500,000.00				500,000.00
9400 Sale of or Compensation for Loss of Fixed Assets					32,633.00
9000 Total Other Financing Sources	\$500,000.00				\$532,633.00
Total From All Sources	\$525,189.41	\$378,757.17			\$98,412,200.68

LEA : 124158503 Unionville-Chadds Ford SD

Printed 11/28/2023 9:36:26 AM

	<u>General Fund (10)</u>	<u>Student Sponsored Activity Fund (21)</u>	<u>Public Purpose Trust (27)</u>	<u>Other Compt Approved (28)</u>	<u>Athletic / Activity (29)</u>	<u>Capital Reserve (690. 1850) (31)</u>
Revenue from Local Sources	78,398,387.82					
Revenue from State Sources	17,999,362.98					
Revenue from Federal Sources	1,077,870.30					
Other Financing Sources	32,633.00					
Total From All Sources	\$97,508,254.10					

LEA : 124158503 Unionville-Chadds Ford SD

Printed 11/28/2023 9:36:26 AM

	<u>Capital Reserve (1431)</u> <u>(32)</u>	<u>Other Capital Projects</u> <u>Fund (39)</u>	<u>Debt Service (40)</u>	<u>Permanent (90)</u>	<u>Total</u>
Revenue from Local Sources	25,189.41	378,757.17			78,802,334.40
Revenue from State Sources					17,999,362.98
Revenue from Federal Sources					1,077,870.30
Other Financing Sources	500,000.00				532,633.00
Total From All Sources	\$525,189.41	\$378,757.17			\$98,412,200.68

LEA : 124158503 Unionville-Chadds Ford SD

Printed 11/28/2023 9:36:29 AM

General Fund (10)

1000 Instruction	Total
100 <u>Personnel Services – Salaries</u>	
100 Personnel Services – Salaries	29,550,013.01
Total Personnel Services – Salaries	\$29,550,013.01
200 <u>Personnel Services – Employee Benefits</u>	
220 Social Security Contributions	2,157,470.96
230 PSERS Retirement Contributions	10,197,339.56
250 Unemployment Compensation	1,649.49
260 Workers' Compensation	226,244.47
270 Group Insurance – Self-Insurance	6,304,319.24
Total Personnel Services – Employee Benefits	\$18,887,023.72
300 <u>Purchased Professional and Technical Services</u>	
322 Professional Educational Services – Ius	2,889,948.06
329 Professional Educational Services – Other	2,163,298.82
330 Other Professional Services	860,559.25
390 Other Purchased Professional and Technical Services	300.88
Total Purchased Professional and Technical Services	\$5,914,107.01
400 <u>Purchased Property Services</u>	
430 Repairs and Maintenance Services	79,543.73
Total Purchased Property Services	\$79,543.73
500 <u>Other Purchased Services</u>	
530 Communications	1,040.35
561 Tuition To Other School Districts Within the State	162,622.56
562 Tuition To Pennsylvania Charter Schools	819,236.05
564 Tuition To Career and Technology Centers	844,478.28
567 Tuition To Approved Private Schools (APS) and PA Chartered Schools for the Deaf and Blind	57,746.21
569 Tuition – Other	122,733.58
580 Travel	72,012.82
599 Other Miscellaneous Purchased Services	17,291.47
Total Other Purchased Services	\$2,097,161.32
600 <u>Supplies</u>	
610 General Supplies	375,076.27
630 Food	246.39
640 Books and Periodicals	161,185.27
650 Supplies & Fees – Technology Related	33,788.12
Total Supplies	\$570,296.05
700 <u>Property</u>	
752 Capital Equipment – Original and Additional	132,435.55
762 Capitalized Equipment - Replacement	17,434.28
Total Property	\$149,869.83
800 <u>Other Objects</u>	
810 Dues and Fees	165.00

LEA : 124158503 Unionville-Chadds Ford SD

Printed 11/28/2023 9:36:29 AM

General Fund (10)

1000 Instruction

	<u>Total</u>
Total Other Objects	\$165.00
Total 1000 Instruction	\$57,248,179.67

LEA : 124158503 Unionville-Chadds Ford SD

Printed 11/28/2023 9:36:29 AM

General Fund (10)

1100 Regular Programs – Elementary / Secondary

	Elementary	Secondary	Federal	Total
100 <u>Personnel Services – Salaries</u>				
100 Personnel Services – Salaries	11,072,762.84	11,488,453.67	151,258.00	22,712,474.51
Total Personnel Services – Salaries	\$11,072,762.84	\$11,488,453.67	\$151,258.00	\$22,712,474.51
200 <u>Personnel Services – Employee Benefits</u>				
220 Social Security Contributions	811,163.67	845,978.45		1,657,142.12
230 PSERS Retirement Contributions	3,837,069.82	3,993,831.96	2,126.00	7,833,027.78
250 Unemployment Compensation	561.84	584.64		1,146.48
260 Workers' Compensation	85,166.74	88,621.64		173,788.38
270 Group Insurance – Self-Insurance	2,248,144.01	2,339,343.06		4,587,487.07
Total Personnel Services – Employee Benefits	\$6,982,106.08	\$7,268,359.75	\$2,126.00	\$14,252,591.83
300 <u>Purchased Professional and Technical Services</u>				
322 Professional Educational Services – lus			1,800.00	1,800.00
329 Professional Educational Services – Other	526,320.14	340,784.29		867,104.43
330 Other Professional Services			4,665.38	4,665.38
Total Purchased Professional and Technical Services	\$526,320.14	\$340,784.29	\$6,465.38	\$873,569.81
400 <u>Purchased Property Services</u>				
430 Repairs and Maintenance Services	38,129.05	39,980.04		78,109.09
Total Purchased Property Services	\$38,129.05	\$39,980.04		\$78,109.09
500 <u>Other Purchased Services</u>				
530 Communications	260.07	260.07		520.14
562 Tuition To Pennsylvania Charter Schools	183,364.06	385,890.79		569,254.85
569 Tuition – Other	10,733.00	74,926.57		85,659.57
580 Travel	9,202.26	55,575.07		64,777.33
Total Other Purchased Services	\$203,559.39	\$516,652.50		\$720,211.89
600 <u>Supplies</u>				
610 General Supplies	109,913.38	164,231.83	70,992.00	345,137.21
640 Books and Periodicals	43,026.46	113,736.45	878.80	157,641.71
Total Supplies	\$152,939.84	\$277,968.28	\$71,870.80	\$502,778.92
700 <u>Property</u>				
752 Capital Equipment – Original and Additional	40,575.56	91,859.99		132,435.55
762 Capitalized Equipment - Replacement	6,709.76	10,724.52		17,434.28
Total Property	\$47,285.32	\$102,584.51		\$149,869.83
Total 1100 Regular Programs – Elementary / Secondary	\$19,023,102.66	\$20,034,783.04	\$231,720.18	\$39,289,605.88

LEA : 124158503 Unionville-Chadds Ford SD

Printed 11/28/2023 9:36:29 AM

General Fund (10)

1110 Regular Programs

	Elementary	Secondary	Federal	Total
100 <u>Personnel Services – Salaries</u>				
100 Personnel Services – Salaries	11,072,762.84	11,488,453.67	59,547.00	22,620,763.51
Total Personnel Services – Salaries	\$11,072,762.84	\$11,488,453.67	\$59,547.00	\$22,620,763.51
200 <u>Personnel Services – Employee Benefits</u>				
220 Social Security Contributions	811,163.67	845,978.45		1,657,142.12
230 PSERS Retirement Contributions	3,837,069.82	3,993,831.96	1,063.00	7,831,964.78
250 Unemployment Compensation	561.84	584.64		1,146.48
260 Workers' Compensation	85,166.74	88,621.64		173,788.38
270 Group Insurance – Self-Insurance	2,248,144.01	2,339,343.06		4,587,487.07
Total Personnel Services – Employee Benefits	\$6,982,106.08	\$7,268,359.75	\$1,063.00	\$14,251,528.83
300 <u>Purchased Professional and Technical Services</u>				
329 Professional Educational Services – Other	526,320.14	340,784.29		867,104.43
Total Purchased Professional and Technical Services	\$526,320.14	\$340,784.29		\$867,104.43
400 <u>Purchased Property Services</u>				
430 Repairs and Maintenance Services	38,129.05	39,980.04		78,109.09
Total Purchased Property Services	\$38,129.05	\$39,980.04		\$78,109.09
500 <u>Other Purchased Services</u>				
530 Communications	260.07	260.07		520.14
562 Tuition To Pennsylvania Charter Schools	183,364.06	385,890.79		569,254.85
569 Tuition – Other	10,733.00	74,926.57		85,659.57
580 Travel	9,202.26	55,575.07		64,777.33
Total Other Purchased Services	\$203,559.39	\$516,652.50		\$720,211.89
600 <u>Supplies</u>				
610 General Supplies	109,913.38	164,231.83	70,527.00	344,672.21
640 Books and Periodicals	43,026.46	113,736.45		156,762.91
Total Supplies	\$152,939.84	\$277,968.28	\$70,527.00	\$501,435.12
700 <u>Property</u>				
752 Capital Equipment – Original and Additional	40,575.56	91,859.99		132,435.55
762 Capitalized Equipment - Replacement	6,709.76	10,724.52		17,434.28
Total Property	\$47,285.32	\$102,584.51		\$149,869.83
Total 1110 Regular Programs	\$19,023,102.66	\$20,034,783.04	\$131,137.00	\$39,189,022.70

LEA : 124158503 Unionville-Chadds Ford SD

Printed 11/28/2023 9:36:29 AM

General Fund (10)

1190 Federally-Funded Regular Programs	<u>Elementary</u>	<u>Secondary</u>	<u>Federal</u>	<u>Total</u>
100 <u>Personnel Services – Salaries</u>				
100 Personnel Services – Salaries			91,711.00	91,711.00
Total Personnel Services – Salaries			\$91,711.00	\$91,711.00
200 <u>Personnel Services – Employee Benefits</u>				
230 PSERS Retirement Contributions			1,063.00	1,063.00
Total Personnel Services – Employee Benefits			\$1,063.00	\$1,063.00
300 <u>Purchased Professional and Technical Services</u>				
322 Professional Educational Services – Ius			1,800.00	1,800.00
330 Other Professional Services			4,665.38	4,665.38
Total Purchased Professional and Technical Services			\$6,465.38	\$6,465.38
600 <u>Supplies</u>				
610 General Supplies			465.00	465.00
640 Books and Periodicals			878.80	878.80
Total Supplies			\$1,343.80	\$1,343.80
Total 1190 Federally-Funded Regular Programs			\$100,583.18	\$100,583.18

LEA : 124158503 Unionville-Chadds Ford SD

Printed 11/28/2023 9:36:29 AM

General Fund (10)				
1200 Special Programs – Elementary / Secondary	<u>Elementary</u>	<u>Secondary</u>	<u>Federal</u>	<u>Total</u>
100 <u>Personnel Services – Salaries</u>				
100 Personnel Services – Salaries	3,610,621.38	2,429,539.47	795,981.15	6,836,142.00
Total Personnel Services – Salaries	\$3,610,621.38	\$2,429,539.47	\$795,981.15	\$6,836,142.00
200 <u>Personnel Services – Employee Benefits</u>				
220 Social Security Contributions	253,848.54	220,860.75	25,512.72	500,222.01
230 PSERS Retirement Contributions	1,196,779.04	1,041,068.46	126,464.28	2,364,311.78
250 Unemployment Compensation	263.71	239.30		503.01
260 Workers' Compensation	27,674.45	24,781.64		52,456.09
270 Group Insurance – Self-Insurance	877,797.82	780,386.35	58,648.00	1,716,832.17
Total Personnel Services – Employee Benefits	\$2,356,363.56	\$2,067,336.50	\$210,625.00	\$4,634,325.06
300 <u>Purchased Professional and Technical Services</u>				
322 Professional Educational Services – lus	1,010,008.10	1,878,139.96		2,888,148.06
329 Professional Educational Services – Other	967,534.23	309,200.82	896.00	1,277,631.05
330 Other Professional Services	19,039.98	836,853.89		855,893.87
390 Other Purchased Professional and Technical Services		300.88		300.88
Total Purchased Professional and Technical Services	\$1,996,582.31	\$3,024,495.55	\$896.00	\$5,021,973.86
400 <u>Purchased Property Services</u>				
430 Repairs and Maintenance Services	717.32	717.32		1,434.64
Total Purchased Property Services	\$717.32	\$717.32		\$1,434.64
500 <u>Other Purchased Services</u>				
530 Communications		520.21		520.21
562 Tuition To Pennsylvania Charter Schools	95,627.40	154,353.80		249,981.20
567 Tuition To Approved Private Schools (APS) and PA Chartered Schools for the Deaf and Blind		57,746.21		57,746.21
569 Tuition – Other		37,074.01		37,074.01
580 Travel	1,502.99	5,732.50		7,235.49
Total Other Purchased Services	\$97,130.39	\$255,426.73		\$352,557.12
600 <u>Supplies</u>				
610 General Supplies	23,338.03	2,641.03	3,960.00	29,939.06
630 Food	153.25	93.14		246.39
640 Books and Periodicals	374.84	3,168.72		3,543.56
650 Supplies & Fees – Technology Related	16,294.05	17,494.07		33,788.12
Total Supplies	\$40,160.17	\$23,396.96	\$3,960.00	\$67,517.13
800 <u>Other Objects</u>				
810 Dues and Fees	165.00			165.00
Total Other Objects	\$165.00			\$165.00
Total 1200 Special Programs – Elementary / Secondary	\$8,101,740.13	\$7,800,912.53	\$1,011,462.15	\$16,914,114.81

LEA : 124158503 Unionville-Chadds Ford SD

Printed 11/28/2023 9:36:29 AM

General Fund (10)

1210 Life Skills Support

	<u>Elementary</u>	<u>Secondary</u>	<u>Federal</u>	<u>Total</u>
100 <u>Personnel Services – Salaries</u>				
100 Personnel Services – Salaries			66,063.00	66,063.00
Total Personnel Services – Salaries			\$66,063.00	\$66,063.00
200 <u>Personnel Services – Employee Benefits</u>				
220 Social Security Contributions		2,335.91	2,526.91	4,862.82
230 PSERS Retirement Contributions		11,337.33	11,646.91	22,984.24
250 Unemployment Compensation		4.53		4.53
260 Workers' Compensation		509.94		509.94
270 Group Insurance – Self-Insurance		18,311.42		18,311.42
Total Personnel Services – Employee Benefits		\$32,499.13	\$14,173.82	\$46,672.95
300 <u>Purchased Professional and Technical Services</u>				
322 Professional Educational Services – Ius	294,881.97	350,908.79		645,790.76
329 Professional Educational Services – Other	107,313.15	66,881.87		174,195.02
Total Purchased Professional and Technical Services	\$402,195.12	\$417,790.66		\$819,985.78
500 <u>Other Purchased Services</u>				
530 Communications		520.21		520.21
Total Other Purchased Services		\$520.21		\$520.21
600 <u>Supplies</u>				
610 General Supplies	718.69	154.13		872.82
Total Supplies	\$718.69	\$154.13		\$872.82
Total 1210 Life Skills Support	\$402,913.81	\$450,964.13	\$80,236.82	\$934,114.76

LEA : 124158503 Unionville-Chadds Ford SD

Printed 11/28/2023 9:36:29 AM

General Fund (10)				
1220 Sensory Support	<u>Elementary</u>	<u>Secondary</u>	<u>Federal</u>	<u>Total</u>
100 <u>Personnel Services – Salaries</u>				
100 Personnel Services – Salaries	301,823.93	184,944.50	67,994.00	554,762.43
Total Personnel Services – Salaries	\$301,823.93	\$184,944.50	\$67,994.00	\$554,762.43
200 <u>Personnel Services – Employee Benefits</u>				
220 Social Security Contributions	20,809.02	17,438.63	2,600.00	40,847.65
230 PSERS Retirement Contributions	98,521.39	82,564.20	11,982.00	193,067.59
250 Unemployment Compensation	12.33	10.33		22.66
260 Workers' Compensation	2,330.49	1,953.03		4,283.52
270 Group Insurance – Self-Insurance	35,934.50	30,114.30	20,696.00	86,744.80
Total Personnel Services – Employee Benefits	\$157,607.73	\$132,080.49	\$35,278.00	\$324,966.22
300 <u>Purchased Professional and Technical Services</u>				
322 Professional Educational Services – lus	46,332.11	5,723.36		52,055.47
329 Professional Educational Services – Other	30,802.58			30,802.58
Total Purchased Professional and Technical Services	\$77,134.69	\$5,723.36		\$82,858.05
500 <u>Other Purchased Services</u>				
580 Travel	405.89			405.89
Total Other Purchased Services	\$405.89			\$405.89
600 <u>Supplies</u>				
610 General Supplies	1,042.93	469.26	3,960.00	5,472.19
Total Supplies	\$1,042.93	\$469.26	\$3,960.00	\$5,472.19
Total 1220 Sensory Support	\$538,015.17	\$323,217.61	\$107,232.00	\$968,464.78

LEA : 124158503 Unionville-Chadds Ford SD

Printed 11/28/2023 9:36:29 AM

General Fund (10)

1230 Emotional Support

	<u>Elementary</u>	<u>Secondary</u>	<u>Federal</u>	<u>Total</u>
100 <u>Personnel Services – Salaries</u>				
100 Personnel Services – Salaries	409,413.32	269,352.64	181,951.00	860,716.96
Total Personnel Services – Salaries	\$409,413.32	\$269,352.64	\$181,951.00	\$860,716.96
200 <u>Personnel Services – Employee Benefits</u>				
220 Social Security Contributions	28,487.72	31,402.52	3,326.41	63,216.65
230 PSERS Retirement Contributions	130,606.83	143,970.26	24,217.98	298,795.07
250 Unemployment Compensation	25.87	28.51		54.38
260 Workers' Compensation	3,153.31	3,475.94		6,629.25
270 Group Insurance – Self-Insurance	70,095.07	77,267.06		147,362.13
Total Personnel Services – Employee Benefits	\$232,368.80	\$256,144.29	\$27,544.39	\$516,057.48
300 <u>Purchased Professional and Technical Services</u>				
322 Professional Educational Services – lus	270,253.49	1,072,458.27		1,342,711.76
329 Professional Educational Services – Other	415,211.25	172,589.52		587,800.77
Total Purchased Professional and Technical Services	\$685,464.74	\$1,245,047.79		\$1,930,512.53
500 <u>Other Purchased Services</u>				
567 Tuition To Approved Private Schools (APS) and PA Chartered Schools for the Deaf and Blind		8,050.16		8,050.16
Total Other Purchased Services		\$8,050.16		\$8,050.16
600 <u>Supplies</u>				
610 General Supplies	12,917.19	338.18		13,255.37
Total Supplies	\$12,917.19	\$338.18		\$13,255.37
Total 1230 Emotional Support	\$1,340,164.05	\$1,778,933.06	\$209,495.39	\$3,328,592.50

LEA : 124158503 Unionville-Chadds Ford SD

Printed 11/28/2023 9:36:29 AM

General Fund (10)

1240 Academic Support

	<u>Elementary</u>	<u>Secondary</u>	<u>Federal</u>	<u>Total</u>
100 <u>Personnel Services – Salaries</u>				
100 Personnel Services – Salaries	2,772,903.23	1,851,665.07	266,825.00	4,891,393.30
Total Personnel Services – Salaries	\$2,772,903.23	\$1,851,665.07	\$266,825.00	\$4,891,393.30
200 <u>Personnel Services – Employee Benefits</u>				
220 Social Security Contributions	197,464.72	150,816.03	8,974.40	357,255.15
230 PSERS Retirement Contributions	933,891.19	713,319.65	41,364.39	1,688,575.23
250 Unemployment Compensation	218.09	176.16		394.25
260 Workers' Compensation	21,215.95	16,247.83		37,463.78
270 Group Insurance – Self-Insurance	752,189.42	602,569.58		1,354,759.00
Total Personnel Services – Employee Benefits	\$1,904,979.37	\$1,483,129.25	\$50,338.79	\$3,438,447.41
300 <u>Purchased Professional and Technical Services</u>				
322 Professional Educational Services – lus	81,112.58	290,896.50		372,009.08
329 Professional Educational Services – Other	295,942.18	54,344.27		350,286.45
Total Purchased Professional and Technical Services	\$377,054.76	\$345,240.77		\$722,295.53
500 <u>Other Purchased Services</u>				
580 Travel		390.62		390.62
Total Other Purchased Services		\$390.62		\$390.62
600 <u>Supplies</u>				
610 General Supplies	8,027.85	892.49		8,920.34
640 Books and Periodicals	374.84	3,168.72		3,543.56
Total Supplies	\$8,402.69	\$4,061.21		\$12,463.90
Total 1240 Academic Support	\$5,063,340.05	\$3,684,486.92	\$317,163.79	\$9,064,990.76

LEA : 124158503 Unionville-Chadds Ford SD

Printed 11/28/2023 9:36:29 AM

General Fund (10)

1241 Learning Support – Public	Elementary	Secondary	Federal	Total
100 <u>Personnel Services – Salaries</u>				
100 Personnel Services – Salaries	2,327,335.87	1,711,570.99	266,825.00	4,305,731.86
Total Personnel Services – Salaries	\$2,327,335.87	\$1,711,570.99	\$266,825.00	\$4,305,731.86
200 <u>Personnel Services – Employee Benefits</u>				
220 Social Security Contributions	165,648.15	140,812.35	8,974.40	315,434.90
230 PSERS Retirement Contributions	783,509.39	666,037.02	41,364.39	1,490,910.80
250 Unemployment Compensation	200.85	170.74		371.59
260 Workers' Compensation	17,879.48	15,198.79		33,078.27
270 Group Insurance – Self-Insurance	683,407.21	580,943.26		1,264,350.47
Total Personnel Services – Employee Benefits	\$1,650,645.08	\$1,403,162.16	\$50,338.79	\$3,104,146.03
300 <u>Purchased Professional and Technical Services</u>				
322 Professional Educational Services – lus	81,112.58	290,896.50		372,009.08
329 Professional Educational Services – Other	295,942.18	54,344.27		350,286.45
Total Purchased Professional and Technical Services	\$377,054.76	\$345,240.77		\$722,295.53
500 <u>Other Purchased Services</u>				
580 Travel		390.62		390.62
Total Other Purchased Services		\$390.62		\$390.62
600 <u>Supplies</u>				
610 General Supplies	6,694.44	869.00		7,563.44
640 Books and Periodicals	374.84	3,168.72		3,543.56
Total Supplies	\$7,069.28	\$4,037.72		\$11,107.00
Total 1241 Learning Support – Public	\$4,362,104.99	\$3,464,402.26	\$317,163.79	\$8,143,671.04

LEA : 124158503 Unionville-Chadds Ford SD

Printed 11/28/2023 9:36:29 AM

General Fund (10)

1243 Gifted Support

	<u>Elementary</u>	<u>Secondary</u>	<u>Federal</u>	<u>Total</u>
100 <u>Personnel Services – Salaries</u>				
100 Personnel Services – Salaries	445,567.36	140,094.08		585,661.44
Total Personnel Services – Salaries	\$445,567.36	\$140,094.08		\$585,661.44
200 <u>Personnel Services – Employee Benefits</u>				
220 Social Security Contributions	31,816.57	10,003.68		41,820.25
230 PSERS Retirement Contributions	150,381.80	47,282.63		197,664.43
250 Unemployment Compensation	17.24	5.42		22.66
260 Workers' Compensation	3,336.47	1,049.04		4,385.51
270 Group Insurance – Self-Insurance	68,782.21	21,626.32		90,408.53
Total Personnel Services – Employee Benefits	\$254,334.29	\$79,967.09		\$334,301.38
600 <u>Supplies</u>				
610 General Supplies	1,333.41	23.49		1,356.90
Total Supplies	\$1,333.41	\$23.49		\$1,356.90
Total 1243 Gifted Support	\$701,235.06	\$220,084.66		\$921,319.72

LEA : 124158503 Unionville-Chadds Ford SD

Printed 11/28/2023 9:36:29 AM

General Fund (10)

1260 Physical Support

	<u>Elementary</u>	<u>Secondary</u>	<u>Federal</u>	<u>Total</u>
300 <u>Purchased Professional and Technical Services</u>				
329 Professional Educational Services – Other	33,947.33		896.00	34,843.33
Total Purchased Professional and Technical Services	\$33,947.33		\$896.00	\$34,843.33
Total 1260 Physical Support	\$33,947.33		\$896.00	\$34,843.33

LEA : 124158503 Unionville-Chadds Ford SD

Printed 11/28/2023 9:36:29 AM

General Fund (10)

1270 Multi-Handicapped Support	<u>Elementary</u>	<u>Secondary</u>	<u>Federal</u>	<u>Total</u>
300 <u>Purchased Professional and Technical Services</u>				
322 Professional Educational Services – Ius	176,922.59	128,050.26		304,972.85
329 Professional Educational Services – Other	19,595.95	7,538.65		27,134.60
Total Purchased Professional and Technical Services	\$196,518.54	\$135,588.91		\$332,107.45
600 <u>Supplies</u>				
610 General Supplies		210.00		210.00
Total Supplies		\$210.00		\$210.00
Total 1270 Multi-Handicapped Support	\$196,518.54	\$135,798.91		\$332,317.45

LEA : 124158503 Unionville-Chadds Ford SD

Printed 11/28/2023 9:36:29 AM

General Fund (10)

1280 Early Intervention Support

300 Purchased Professional and Technical Services

322 Professional Educational Services – lus	Elementary	Secondary	Federal	Total
	34,277.34			34,277.34
Total Purchased Professional and Technical Services	\$34,277.34			\$34,277.34
Total 1280 Early Intervention Support	\$34,277.34			\$34,277.34

LEA : 124158503 Unionville-Chadds Ford SD

Printed 11/28/2023 9:36:29 AM

General Fund (10)				
1290 Special Programs - Other Support	<u>Elementary</u>	<u>Secondary</u>	<u>Federal</u>	<u>Total</u>
100 <u>Personnel Services – Salaries</u>				
100 Personnel Services – Salaries	126,480.90	123,577.26	213,148.15	463,206.31
Total Personnel Services – Salaries	\$126,480.90	\$123,577.26	\$213,148.15	\$463,206.31
200 <u>Personnel Services – Employee Benefits</u>				
220 Social Security Contributions	7,087.08	18,867.66	8,085.00	34,039.74
230 PSERS Retirement Contributions	33,759.63	89,877.02	37,253.00	160,889.65
250 Unemployment Compensation	7.42	19.77		27.19
260 Workers' Compensation	974.70	2,594.90		3,569.60
270 Group Insurance – Self-Insurance	19,578.83	52,123.99	37,952.00	109,654.82
Total Personnel Services – Employee Benefits	\$61,407.66	\$163,483.34	\$83,290.00	\$308,181.00
300 <u>Purchased Professional and Technical Services</u>				
322 Professional Educational Services – lus	106,228.02	30,102.78		136,330.80
329 Professional Educational Services – Other	64,721.79	7,846.51		72,568.30
330 Other Professional Services	19,039.98	836,853.89		855,893.87
390 Other Purchased Professional and Technical Services		300.88		300.88
Total Purchased Professional and Technical Services	\$189,989.79	\$875,104.06		\$1,065,093.85
400 <u>Purchased Property Services</u>				
430 Repairs and Maintenance Services	717.32	717.32		1,434.64
Total Purchased Property Services	\$717.32	\$717.32		\$1,434.64
500 <u>Other Purchased Services</u>				
562 Tuition To Pennsylvania Charter Schools	95,627.40	154,353.80		249,981.20
567 Tuition To Approved Private Schools (APS) and PA Chartered Schools for the Deaf and Blind		49,696.05		49,696.05
569 Tuition – Other		37,074.01		37,074.01
580 Travel	1,097.10	5,341.88		6,438.98
Total Other Purchased Services	\$96,724.50	\$246,465.74		\$343,190.24
600 <u>Supplies</u>				
610 General Supplies	631.37	576.97		1,208.34
630 Food	153.25	93.14		246.39
650 Supplies & Fees – Technology Related	16,294.05	17,494.07		33,788.12
Total Supplies	\$17,078.67	\$18,164.18		\$35,242.85
800 <u>Other Objects</u>				
810 Dues and Fees	165.00			165.00
Total Other Objects	\$165.00			\$165.00
Total 1290 Special Programs - Other Support	\$492,563.84	\$1,427,511.90	\$296,438.15	\$2,216,513.89

LEA : 124158503 Unionville-Chadds Ford SD

Printed 11/28/2023 9:36:29 AM

General Fund (10)

1300 Vocational Education

	<u>Elementary</u>	<u>Secondary</u>	<u>Federal</u>	<u>Total</u>
500 <u>Other Purchased Services</u>				
561 Tuition To Other School Districts Within the State		40,468.00		40,468.00
564 Tuition To Career and Technology Centers		844,478.28		844,478.28
Total Other Purchased Services		\$884,946.28		\$884,946.28
Total 1300 Vocational Education		\$884,946.28		\$884,946.28

LEA : 124158503 Unionville-Chadds Ford SD

Printed 11/28/2023 9:36:29 AM

General Fund (10)

1400 Other Instructional Programs – Elementary / Secondary	<u>Elementary</u>	<u>Secondary</u>	<u>Federal</u>	<u>Total</u>
100 <u>Personnel Services – Salaries</u>				
100 Personnel Services – Salaries	71.40	1,325.10		1,396.50
Total Personnel Services – Salaries	\$71.40	\$1,325.10		\$1,396.50
200 <u>Personnel Services – Employee Benefits</u>				
220 Social Security Contributions	5.46	101.37		106.83
Total Personnel Services – Employee Benefits	\$5.46	\$101.37		\$106.83
300 <u>Purchased Professional and Technical Services</u>				
329 Professional Educational Services – Other	226.95	18,336.39		18,563.34
Total Purchased Professional and Technical Services	\$226.95	\$18,336.39		\$18,563.34
500 <u>Other Purchased Services</u>				
561 Tuition To Other School Districts Within the State		122,154.56		122,154.56
599 Other Miscellaneous Purchased Services		17,291.47		17,291.47
Total Other Purchased Services		\$139,446.03		\$139,446.03
Total 1400 Other Instructional Programs – Elementary / Secondary	\$303.81	\$159,208.89		\$159,512.70

LEA : 124158503 Unionville-Chadds Ford SD

Printed 11/28/2023 9:36:29 AM

General Fund (10)

1410 Drivers' Education

	<u>Elementary</u>	<u>Secondary</u>	<u>Federal</u>	<u>Total</u>
300 <u>Purchased Professional and Technical Services</u>				
329 Professional Educational Services – Other		17,623.35		17,623.35
Total Purchased Professional and Technical Services		\$17,623.35		\$17,623.35
Total 1410 Drivers' Education		\$17,623.35		\$17,623.35

General Fund (10)

1430 Homebound Instruction	<u>Elementary</u>	<u>Secondary</u>	<u>Federal</u>	<u>Total</u>
100 <u>Personnel Services – Salaries</u>				
100 Personnel Services – Salaries	71.40	1,325.10		1,396.50
Total Personnel Services – Salaries	\$71.40	\$1,325.10		\$1,396.50
200 <u>Personnel Services – Employee Benefits</u>				
220 Social Security Contributions	5.46	101.37		106.83
Total Personnel Services – Employee Benefits	\$5.46	\$101.37		\$106.83
300 <u>Purchased Professional and Technical Services</u>				
329 Professional Educational Services – Other	226.95	713.04		939.99
Total Purchased Professional and Technical Services	\$226.95	\$713.04		\$939.99
Total 1430 Homebound Instruction	\$303.81	\$2,139.51		\$2,443.32

LEA : 124158503 Unionville-Chadds Ford SD

Printed 11/28/2023 9:36:29 AM

General Fund (10)

1440 Alternative Regular Education Programs

<u>Elementary</u>	<u>Secondary</u>	<u>Federal</u>	<u>Total</u>
-------------------	------------------	----------------	--------------

500 Other Purchased Services

561 Tuition To Other School Districts Within the State		122,154.56		122,154.56
599 Other Miscellaneous Purchased Services		17,291.47		17,291.47
Total Other Purchased Services		\$139,446.03		\$139,446.03
Total 1440 Alternative Regular Education Programs		\$139,446.03		\$139,446.03

LEA : 124158503 Unionville-Chadds Ford SD

Printed 11/28/2023 9:36:29 AM

General Fund (10)

1441 Adjudicated / Court-Placed Programs

Elementary Secondary Federal Total

500 Other Purchased Services

561 Tuition To Other School Districts Within the State		122,154.56		122,154.56
599 Other Miscellaneous Purchased Services		17,291.47		17,291.47
Total Other Purchased Services		\$139,446.03		\$139,446.03
Total 1441 Adjudicated / Court-Placed Programs		\$139,446.03		\$139,446.03

LEA : 124158503 Unionville-Chadds Ford SD

Printed 11/28/2023 9:36:34 AM

General Fund (10)

2000 Support Services

Total

100	<u>Personnel Services – Salaries</u>	
100	Personnel Services – Salaries	13,712,405.87
Total Personnel Services – Salaries		\$13,712,405.87
200	<u>Personnel Services – Employee Benefits</u>	
210	Group Insurance – Contracted Provider	9,394.96
220	Social Security Contributions	1,037,075.58
230	PSERS Retirement Contributions	4,691,898.14
240	Tuition Reimbursement	294,912.51
250	Unemployment Compensation	5,539.71
260	Workers' Compensation	369,116.15
270	Group Insurance – Self-Insurance	2,822,785.43
Total Personnel Services – Employee Benefits		\$9,230,722.48
300	<u>Purchased Professional and Technical Services</u>	
322	Professional Educational Services – Ius	10,875.50
329	Professional Educational Services – Other	674,896.86
330	Other Professional Services	425,796.79
340	Technical Services	40,502.93
350	Security / Safety Services	576.94
Total Purchased Professional and Technical Services		\$1,152,649.02
400	<u>Purchased Property Services</u>	
410	Cleaning Services	48,040.57
420	Utility Services	131,645.59
430	Repairs and Maintenance Services	703,927.83
440	Rentals	8,439.00
Total Purchased Property Services		\$892,052.99
500	<u>Other Purchased Services</u>	
516	Student Transportation Services From the IU	1,511.83
520	Insurance – General	6,632.13
521	Fire Insurance	168,155.00
522	Automotive Liability Insurance	117,103.00
523	General Property and Liability Insurance	71,721.00
529	Other Insurance	221,551.00
530	Communications	92,531.76
541	Advertising Related to Federal Grant Awards	917.50
549	Other Advertising/Public Relations	13,082.11
550	Printing and Binding	9,819.46
580	Travel	48,438.97
591	Services Purchased Locally	30,998.89
595	IU Payments By Withholding	40,788.82
Total Other Purchased Services		\$823,251.47
600	<u>Supplies</u>	
610	General Supplies	869,390.37
620	Energy	1,353,274.16
630	Food	20,628.85

LEA : 124158503 Unionville-Chadds Ford SD

Printed 11/28/2023 9:36:34 AM

General Fund (10)

2000 Support Services

Total

600 <u>Supplies</u>	
640 Books and Periodicals	57,823.95
650 Supplies & Fees – Technology Related	11,855.00
Total Supplies	\$2,312,972.33
700 <u>Property</u>	
752 Capital Equipment – Original and Additional	531,373.69
756 Capitalized Technology Equipment – Original	101,795.79
762 Capitalized Equipment - Replacement	1,051,583.81
766 Capitalized Technology Equipment – Replacement	(500.00)
Total Property	\$1,684,253.29
800 <u>Other Objects</u>	
810 Dues and Fees	31,825.54
Total Other Objects	\$31,825.54
Total 2000 Support Services	\$29,840,132.99

LEA : 124158503 Unionville-Chadds Ford SD

Printed 11/28/2023 9:36:34 AM

General Fund (10)

2100 Support Services – Students	<u>Elementary</u>	<u>Secondary</u>	<u>Federal</u>	<u>Total</u>
100 <u>Personnel Services – Salaries</u>				
100 Personnel Services – Salaries	1,253,574.20	1,312,034.86	94,840.00	2,660,449.06
Total Personnel Services – Salaries	\$1,253,574.20	\$1,312,034.86	\$94,840.00	\$2,660,449.06
200 <u>Personnel Services – Employee Benefits</u>				
220 Social Security Contributions	89,024.79	102,663.37	3,473.00	195,161.16
230 PSERS Retirement Contributions	421,136.32	485,309.70	15,988.00	922,434.02
250 Unemployment Compensation	61.90	69.52		131.42
260 Workers' Compensation	9,641.22	10,824.47		20,465.69
270 Group Insurance – Self-Insurance	176,245.16	204,641.69	26,989.00	407,875.85
Total Personnel Services – Employee Benefits	\$696,109.39	\$803,508.75	\$46,450.00	\$1,546,068.14
300 <u>Purchased Professional and Technical Services</u>				
322 Professional Educational Services – lus		10,875.50		10,875.50
329 Professional Educational Services – Other	101,408.97	24,769.12		126,178.09
330 Other Professional Services			10,000.00	10,000.00
Total Purchased Professional and Technical Services	\$101,408.97	\$35,644.62	\$10,000.00	\$147,053.59
500 <u>Other Purchased Services</u>				
530 Communications	9.90			9.90
549 Other Advertising/Public Relations	13,082.11			13,082.11
550 Printing and Binding	424.00			424.00
580 Travel	1,254.58	600.99		2,769.08
Total Other Purchased Services	\$14,770.59	\$600.99		\$16,285.09
600 <u>Supplies</u>				
610 General Supplies	9,078.20	7,572.67	2,640.00	19,290.87
630 Food		599.36		599.36
640 Books and Periodicals	121.13	544.63		691.25
Total Supplies	\$9,199.33	\$8,716.66	\$2,640.00	\$20,581.48
700 <u>Property</u>				
752 Capital Equipment – Original and Additional	938.00			938.00
Total Property	\$938.00			\$938.00
Total 2100 Support Services – Students	\$2,076,000.48	\$2,160,505.88	\$153,930.00	\$4,391,375.36

LEA : 124158503 Unionville-Chadds Ford SD

Printed 11/28/2023 9:36:34 AM

General Fund (10)

2110 Supervision of Student Services	Elementary	Secondary	Federal	Total
100 <u>Personnel Services – Salaries</u>				
100 Personnel Services – Salaries	158,279.75	158,279.26	1,150.00	317,709.01
Total Personnel Services – Salaries	\$158,279.75	\$158,279.26	\$1,150.00	\$317,709.01
200 <u>Personnel Services – Employee Benefits</u>				
220 Social Security Contributions	11,628.54	11,712.99		23,341.53
230 PSERS Retirement Contributions	54,962.58	55,361.75		110,324.33
250 Unemployment Compensation	9.03	9.10		18.13
260 Workers' Compensation	1,219.43	1,228.29		2,447.72
270 Group Insurance – Self-Insurance	29,904.71	30,121.90		60,026.61
Total Personnel Services – Employee Benefits	\$97,724.29	\$98,434.03		\$196,158.32
300 <u>Purchased Professional and Technical Services</u>				
329 Professional Educational Services – Other	38,963.64			38,963.64
Total Purchased Professional and Technical Services	\$38,963.64			\$38,963.64
500 <u>Other Purchased Services</u>				
530 Communications	9.90			9.90
549 Other Advertising/Public Relations	13,082.11			13,082.11
550 Printing and Binding	424.00			424.00
580 Travel	1,157.19	495.00		1,652.19
Total Other Purchased Services	\$14,673.20	\$495.00		\$15,168.20
600 <u>Supplies</u>				
630 Food		599.36		599.36
640 Books and Periodicals	121.13			121.13
Total Supplies	\$121.13	\$599.36		\$720.49
700 <u>Property</u>				
752 Capital Equipment – Original and Additional	938.00			938.00
Total Property	\$938.00			\$938.00
Total 2110 Supervision of Student Services	\$310,700.01	\$257,807.65	\$1,150.00	\$569,657.66

LEA : 124158503 Unionville-Chadds Ford SD

Printed 11/28/2023 9:36:34 AM

General Fund (10)

2111 Supervision of Student Services – Head of Component	Elementary	Secondary	Federal	Total
100 Personnel Services – Salaries				
100 Personnel Services – Salaries	158,279.75	158,279.26	1,150.00	317,709.01
Total Personnel Services – Salaries	\$158,279.75	\$158,279.26	\$1,150.00	\$317,709.01
200 Personnel Services – Employee Benefits				
220 Social Security Contributions	11,628.54	11,712.99		23,341.53
230 PSERS Retirement Contributions	54,962.58	55,361.75		110,324.33
250 Unemployment Compensation	9.03	9.10		18.13
260 Workers' Compensation	1,219.43	1,228.29		2,447.72
270 Group Insurance – Self-Insurance	29,904.71	30,121.90		60,026.61
Total Personnel Services – Employee Benefits	\$97,724.29	\$98,434.03		\$196,158.32
300 Purchased Professional and Technical Services				
329 Professional Educational Services – Other	38,963.64			38,963.64
Total Purchased Professional and Technical Services	\$38,963.64			\$38,963.64
500 Other Purchased Services				
530 Communications	9.90			9.90
549 Other Advertising/Public Relations	13,082.11			13,082.11
550 Printing and Binding	424.00			424.00
580 Travel	1,157.19	495.00		1,652.19
Total Other Purchased Services	\$14,673.20	\$495.00		\$15,168.20
600 Supplies				
630 Food		599.36		599.36
640 Books and Periodicals	121.13			121.13
Total Supplies	\$121.13	\$599.36		\$720.49
700 Property				
752 Capital Equipment – Original and Additional	938.00			938.00
Total Property	\$938.00			\$938.00
Total 2111 Supervision of Student Services – Head of Component	\$310,700.01	\$257,807.65	\$1,150.00	\$569,657.66

LEA : 124158503 Unionville-Chadds Ford SD

Printed 11/28/2023 9:36:34 AM

General Fund (10)				
2120 Guidance Services	<u>Elementary</u>	<u>Secondary</u>	<u>Federal</u>	<u>Total</u>
100 <u>Personnel Services – Salaries</u>				
100 Personnel Services – Salaries	620,093.95	1,153,419.60	2,875.00	1,776,388.55
Total Personnel Services – Salaries	\$620,093.95	\$1,153,419.60	\$2,875.00	\$1,776,388.55
200 <u>Personnel Services – Employee Benefits</u>				
220 Social Security Contributions	45,492.78	84,830.79		130,323.57
230 PSERS Retirement Contributions	215,022.75	400,954.79		615,977.54
250 Unemployment Compensation	30.06	56.04		86.10
260 Workers' Compensation	4,770.63	8,895.83		13,666.46
270 Group Insurance – Self-Insurance	87,542.58	163,241.42		250,784.00
Total Personnel Services – Employee Benefits	\$352,858.80	\$657,978.87		\$1,010,837.67
300 <u>Purchased Professional and Technical Services</u>				
329 Professional Educational Services – Other	62,445.33	14,669.12		77,114.45
330 Other Professional Services			10,000.00	10,000.00
Total Purchased Professional and Technical Services	\$62,445.33	\$14,669.12	\$10,000.00	\$87,114.45
600 <u>Supplies</u>				
640 Books and Periodicals		544.63		544.63
Total Supplies		\$544.63		\$544.63
Total 2120 Guidance Services	\$1,035,398.08	\$1,826,612.22	\$12,875.00	\$2,874,885.30

LEA : 124158503 Unionville-Chadds Ford SD

Printed 11/28/2023 9:36:34 AM

General Fund (10)

2140 Psychological Services	Elementary	Secondary	Federal	Total
100 <u>Personnel Services – Salaries</u>				
100 Personnel Services – Salaries	475,200.50	336.00	90,815.00	566,351.50
Total Personnel Services – Salaries	\$475,200.50	\$336.00	\$90,815.00	\$566,351.50
200 <u>Personnel Services – Employee Benefits</u>				
220 Social Security Contributions	31,903.47	6,119.59	3,473.00	41,496.06
230 PSERS Retirement Contributions	151,150.99	28,993.16	15,988.00	196,132.15
250 Unemployment Compensation	22.81	4.38		27.19
260 Workers' Compensation	3,651.16	700.35		4,351.51
270 Group Insurance – Self-Insurance	58,797.87	11,278.37	26,989.00	97,065.24
Total Personnel Services – Employee Benefits	\$245,526.30	\$47,095.85	\$46,450.00	\$339,072.15
300 <u>Purchased Professional and Technical Services</u>				
322 Professional Educational Services – lus		10,875.50		10,875.50
329 Professional Educational Services – Other		10,100.00		10,100.00
Total Purchased Professional and Technical Services		\$20,975.50		\$20,975.50
500 <u>Other Purchased Services</u>				
580 Travel	97.39	105.99		203.38
Total Other Purchased Services	\$97.39	\$105.99		\$203.38
600 <u>Supplies</u>				
610 General Supplies	9,078.20	7,572.67	2,640.00	19,290.87
Total Supplies	\$9,078.20	\$7,572.67	\$2,640.00	\$19,290.87
Total 2140 Psychological Services	\$729,902.39	\$76,086.01	\$139,905.00	\$945,893.40

LEA : 124158503 Unionville-Chadds Ford SD

Printed 11/28/2023 9:36:34 AM

General Fund (10)

2160 Social Work Services	<u>Elementary</u>	<u>Secondary</u>	<u>Federal</u>	<u>Total</u>
500 <u>Other Purchased Services</u>				
580 Travel				913.51
Total Other Purchased Services				\$913.51
600 <u>Supplies</u>				
640 Books and Periodicals				25.49
Total Supplies				\$25.49
Total 2160 Social Work Services				\$939.00

LEA : 124158503 Unionville-Chadds Ford SD

Printed 11/28/2023 9:36:34 AM

General Fund (10)

2200 Support Services – Instructional Staff	Elementary	Secondary	Federal	Total
100 Personnel Services – Salaries				
100 Personnel Services – Salaries	1,183,176.29	992,338.41	8,050.00	2,183,564.70
Total Personnel Services – Salaries	\$1,183,176.29	\$992,338.41	\$8,050.00	\$2,183,564.70
200 Personnel Services – Employee Benefits				
220 Social Security Contributions	84,321.45	75,827.40		160,148.85
230 PSERS Retirement Contributions	398,547.44	358,400.08		756,947.52
240 Tuition Reimbursement	124,122.50	124,122.50		248,245.00
250 Unemployment Compensation	56.33	47.90		104.23
260 Workers' Compensation	8,842.42	7,951.69		16,794.11
270 Group Insurance – Self-Insurance	183,143.87	157,936.33		341,080.20
Total Personnel Services – Employee Benefits	\$799,034.01	\$724,285.90		\$1,523,319.91
300 Purchased Professional and Technical Services				
329 Professional Educational Services – Other	22,284.30	69,945.43	32,280.00	124,509.73
Total Purchased Professional and Technical Services	\$22,284.30	\$69,945.43	\$32,280.00	\$124,509.73
400 Purchased Property Services				
430 Repairs and Maintenance Services	254,773.66	138,834.87		393,608.53
Total Purchased Property Services	\$254,773.66	\$138,834.87		\$393,608.53
500 Other Purchased Services				
530 Communications	20,928.07	21,243.29		42,171.36
580 Travel	5,161.03	6,014.47	1,755.20	12,930.70
591 Services Purchased Locally	1,228.54			1,228.54
Total Other Purchased Services	\$27,317.64	\$27,257.76	\$1,755.20	\$56,330.60
600 Supplies				
610 General Supplies	55,302.21	15,706.91		71,009.12
630 Food	947.61	2,485.28		3,432.89
640 Books and Periodicals	14,367.26	39,421.84		53,789.10
Total Supplies	\$70,617.08	\$57,614.03		\$128,231.11
700 Property				
752 Capital Equipment – Original and Additional	94,520.73	427,758.32		522,279.05
756 Capitalized Technology Equipment – Original	37,930.05	63,865.74		101,795.79
762 Capitalized Equipment - Replacement	301,498.58	245,515.38		547,013.96
766 Capitalized Technology Equipment – Replacement		(500.00)		(500.00)
Total Property	\$433,949.36	\$736,639.44		\$1,170,588.80
800 Other Objects				
810 Dues and Fees	302.50	302.50		605.00
Total Other Objects	\$302.50	\$302.50		\$605.00
Total 2200 Support Services – Instructional Staff	\$2,791,454.84	\$2,747,218.34	\$42,085.20	\$5,580,758.38

LEA : 124158503 Unionville-Chadds Ford SD

Printed 11/28/2023 9:36:34 AM

General Fund (10)

2220 Technology Support Services	Elementary	Secondary	Federal	Total
100 <u>Personnel Services – Salaries</u>				
100 Personnel Services – Salaries	476,845.21	451,589.99	1,725.00	930,160.20
Total Personnel Services – Salaries	\$476,845.21	\$451,589.99	\$1,725.00	\$930,160.20
200 <u>Personnel Services – Employee Benefits</u>				
220 Social Security Contributions	35,067.03	33,336.63		68,403.66
230 PSERS Retirement Contributions	165,745.19	157,566.40		323,311.59
250 Unemployment Compensation	27.88	26.50		54.38
260 Workers' Compensation	3,677.32	3,495.87		7,173.19
270 Group Insurance – Self-Insurance	82,259.06	78,199.94		160,459.00
Total Personnel Services – Employee Benefits	\$286,776.48	\$272,625.34		\$559,401.82
400 <u>Purchased Property Services</u>				
430 Repairs and Maintenance Services	3,999.21			3,999.21
Total Purchased Property Services	\$3,999.21			\$3,999.21
600 <u>Supplies</u>				
610 General Supplies	17,611.18	6,110.00		23,721.18
Total Supplies	\$17,611.18	\$6,110.00		\$23,721.18
700 <u>Property</u>				
752 Capital Equipment – Original and Additional	12,330.58	12,044.20		24,374.78
762 Capitalized Equipment - Replacement	4,376.39			4,376.39
Total Property	\$16,706.97	\$12,044.20		\$28,751.17
Total 2220 Technology Support Services	\$801,939.05	\$742,369.53	\$1,725.00	\$1,546,033.58

LEA : 124158503 Unionville-Chadds Ford SD

Printed 11/28/2023 9:36:34 AM

General Fund (10)

2240 Computer-Assisted Instruction Support Services	<u>Elementary</u>	<u>Secondary</u>	<u>Federal</u>	<u>Total</u>
300 <u>Purchased Professional and Technical Services</u>				
329 Professional Educational Services – Other	22,158.50	43,552.75		65,711.25
Total Purchased Professional and Technical Services	\$22,158.50	\$43,552.75		\$65,711.25
400 <u>Purchased Property Services</u>				
430 Repairs and Maintenance Services	250,774.45	138,834.87		389,609.32
Total Purchased Property Services	\$250,774.45	\$138,834.87		\$389,609.32
500 <u>Other Purchased Services</u>				
530 Communications	20,407.94	21,243.29		41,651.23
580 Travel	4,228.01	2,550.00		6,778.01
Total Other Purchased Services	\$24,635.95	\$23,793.29		\$48,429.24
600 <u>Supplies</u>				
610 General Supplies	34,057.66	9,596.91		43,654.57
630 Food	231.88	1,423.82		1,655.70
Total Supplies	\$34,289.54	\$11,020.73		\$45,310.27
700 <u>Property</u>				
752 Capital Equipment – Original and Additional	82,190.15	415,714.12		497,904.27
762 Capitalized Equipment - Replacement	297,122.19	245,515.38		542,637.57
Total Property	\$379,312.34	\$661,229.50		\$1,040,541.84
Total 2240 Computer-Assisted Instruction Support Services	\$711,170.78	\$878,431.14		\$1,589,601.92

LEA : 124158503 Unionville-Chadds Ford SD

Printed 11/28/2023 9:36:34 AM

General Fund (10)

2250 School Library Services	Elementary	Secondary	Federal	Total
100 Personnel Services – Salaries				
100 Personnel Services – Salaries	426,552.68	216,243.28	4,600.00	647,395.96
Total Personnel Services – Salaries	\$426,552.68	\$216,243.28	\$4,600.00	\$647,395.96
200 Personnel Services – Employee Benefits				
220 Social Security Contributions	31,399.08	16,256.55		47,655.63
230 PSERS Retirement Contributions	148,408.53	76,836.99		225,245.52
250 Unemployment Compensation	20.90	10.82		31.72
260 Workers' Compensation	3,292.69	1,704.75		4,997.44
270 Group Insurance – Self-Insurance	69,798.36	36,137.39		105,935.75
Total Personnel Services – Employee Benefits	\$252,919.56	\$130,946.50		\$383,866.06
600 Supplies				
640 Books and Periodicals	14,312.18	39,421.84		53,734.02
Total Supplies	\$14,312.18	\$39,421.84		\$53,734.02
Total 2250 School Library Services	\$693,784.42	\$386,611.62	\$4,600.00	\$1,084,996.04

LEA : 124158503 Unionville-Chadds Ford SD

Printed 11/28/2023 9:36:34 AM

General Fund (10)

2260 Instruction and Curriculum Development Services	<u>Elementary</u>	<u>Secondary</u>	<u>Federal</u>	<u>Total</u>
100 <u>Personnel Services – Salaries</u>				
100 Personnel Services – Salaries	262,107.68	284,012.67	1,725.00	547,845.35
Total Personnel Services – Salaries	\$262,107.68	\$284,012.67	\$1,725.00	\$547,845.35
200 <u>Personnel Services – Employee Benefits</u>				
220 Social Security Contributions	16,462.35	23,088.58		39,550.93
230 PSERS Retirement Contributions	77,809.71	109,128.75		186,938.46
250 Unemployment Compensation	7.55	10.58		18.13
260 Workers' Compensation	1,726.33	2,421.20		4,147.53
270 Group Insurance – Self-Insurance	31,086.45	43,599.00		74,685.45
Total Personnel Services – Employee Benefits	\$127,092.39	\$178,248.11		\$305,340.50
300 <u>Purchased Professional and Technical Services</u>				
329 Professional Educational Services – Other	125.80	26,392.68		26,518.48
Total Purchased Professional and Technical Services	\$125.80	\$26,392.68		\$26,518.48
500 <u>Other Purchased Services</u>				
530 Communications	520.13			520.13
580 Travel	218.52	2,014.47		2,232.99
Total Other Purchased Services	\$738.65	\$2,014.47		\$2,753.12
600 <u>Supplies</u>				
610 General Supplies	2,408.96			2,408.96
630 Food	613.35	329.17		942.52
640 Books and Periodicals	55.08			55.08
Total Supplies	\$3,077.39	\$329.17		\$3,406.56
700 <u>Property</u>				
756 Capitalized Technology Equipment – Original	37,930.05	63,865.74		101,795.79
766 Capitalized Technology Equipment – Replacement		(500.00)		(500.00)
Total Property	\$37,930.05	\$63,365.74		\$101,295.79
800 <u>Other Objects</u>				
810 Dues and Fees	302.50	302.50		605.00
Total Other Objects	\$302.50	\$302.50		\$605.00
Total 2260 Instruction and Curriculum Development Services	\$431,374.46	\$554,665.34	\$1,725.00	\$987,764.80

LEA : 124158503 Unionville-Chadds Ford SD

Printed 11/28/2023 9:36:34 AM

General Fund (10)

2270 Instructional Staff Professional Development Services	<u>Elementary</u>	<u>Secondary</u>	<u>Federal</u>	<u>Total</u>
100 <u>Personnel Services – Salaries</u>				
100 Personnel Services – Salaries	12,726.00	11,718.00		24,444.00
Total Personnel Services – Salaries	\$12,726.00	\$11,718.00		\$24,444.00
200 <u>Personnel Services – Employee Benefits</u>				
220 Social Security Contributions	1,012.67	932.46		1,945.13
230 PSERS Retirement Contributions	4,786.41	4,407.28		9,193.69
240 Tuition Reimbursement	124,122.50	124,122.50		248,245.00
260 Workers' Compensation	106.20	97.78		203.98
Total Personnel Services – Employee Benefits	\$130,027.78	\$129,560.02		\$259,587.80
300 <u>Purchased Professional and Technical Services</u>				
329 Professional Educational Services – Other			32,280.00	32,280.00
Total Purchased Professional and Technical Services			\$32,280.00	\$32,280.00
500 <u>Other Purchased Services</u>				
580 Travel	714.50	1,450.00	1,755.20	3,919.70
591 Services Purchased Locally	1,228.54			1,228.54
Total Other Purchased Services	\$1,943.04	\$1,450.00	\$1,755.20	\$5,148.24
600 <u>Supplies</u>				
630 Food		629.92		629.92
Total Supplies		\$629.92		\$629.92
Total 2270 Instructional Staff Professional Development Services	\$144,696.82	\$143,357.94	\$34,035.20	\$322,089.96

LEA : 124158503 Unionville-Chadds Ford SD

Printed 11/28/2023 9:36:34 AM

General Fund (10)

2290 Other Instructional Staff Services	<u>Elementary</u>	<u>Secondary</u>	<u>Federal</u>	<u>Total</u>
100 <u>Personnel Services – Salaries</u>				
100 Personnel Services – Salaries	4,944.72	28,774.47		33,719.19
Total Personnel Services – Salaries	\$4,944.72	\$28,774.47		\$33,719.19
200 <u>Personnel Services – Employee Benefits</u>				
220 Social Security Contributions	380.32	2,213.18		2,593.50
230 PSERS Retirement Contributions	1,797.60	10,460.66		12,258.26
260 Workers’ Compensation	39.88	232.09		271.97
Total Personnel Services – Employee Benefits	\$2,217.80	\$12,905.93		\$15,123.73
600 <u>Supplies</u>				
610 General Supplies	1,224.41			1,224.41
630 Food	102.38	102.37		204.75
Total Supplies	\$1,326.79	\$102.37		\$1,429.16
Total 2290 Other Instructional Staff Services	\$8,489.31	\$41,782.77		\$50,272.08

LEA : 124158503 Unionville-Chadds Ford SD

Printed 11/28/2023 9:36:34 AM

General Fund (10)

2300 Support Services – Administration	<u>Elementary</u>	<u>Secondary</u>	<u>Federal</u>	<u>Total</u>
100 <u>Personnel Services – Salaries</u>				
100 Personnel Services – Salaries	1,092,400.12	956,315.71	7,475.00	2,546,526.55
Total Personnel Services – Salaries	\$1,092,400.12	\$956,315.71	\$7,475.00	\$2,546,526.55
200 <u>Personnel Services – Employee Benefits</u>				
220 Social Security Contributions	79,615.96	70,158.88		184,830.00
230 PSERS Retirement Contributions	376,306.81	331,607.67		873,400.98
250 Unemployment Compensation	69.86	61.56		145.01
260 Workers' Compensation	8,348.98	7,357.25		19,377.82
270 Group Insurance – Self-Insurance	244,293.50	215,275.39		509,818.41
Total Personnel Services – Employee Benefits	\$708,635.11	\$624,460.75		\$1,587,572.22
300 <u>Purchased Professional and Technical Services</u>				
329 Professional Educational Services – Other	10,618.99	2,594.89		31,712.61
330 Other Professional Services				335,178.58
340 Technical Services		21,091.93		21,091.93
Total Purchased Professional and Technical Services	\$10,618.99	\$23,686.82		\$387,983.12
500 <u>Other Purchased Services</u>				
520 Insurance – General				6,632.13
530 Communications	27,104.82	10,881.93		38,276.75
541 Advertising Related to Federal Grant Awards				917.50
550 Printing and Binding	1,300.65	2,524.78		3,825.43
580 Travel				12,981.30
Total Other Purchased Services	\$28,405.47	\$13,406.71		\$62,633.11
600 <u>Supplies</u>				
610 General Supplies	9,891.67	24,705.62		37,301.57
630 Food	3,038.67	3,445.19		14,093.25
640 Books and Periodicals				3,262.53
Total Supplies	\$12,930.34	\$28,150.81		\$54,657.35
800 <u>Other Objects</u>				
810 Dues and Fees				27,034.23
Total Other Objects				\$27,034.23
Total 2300 Support Services – Administration	\$1,852,990.03	\$1,646,020.80	\$7,475.00	\$4,666,406.58

LEA : 124158503 Unionville-Chadds Ford SD

Printed 11/28/2023 9:36:34 AM

General Fund (10)				
2310 Board Services	<u>Elementary</u>	<u>Secondary</u>	<u>Federal</u>	<u>Total</u>
300 <u>Purchased Professional and Technical Services</u>				
329 Professional Educational Services – Other				9,210.00
Total Purchased Professional and Technical Services				\$9,210.00
500 <u>Other Purchased Services</u>				
520 Insurance – General				1,938.00
541 Advertising Related to Federal Grant Awards				917.50
580 Travel				2,383.38
Total Other Purchased Services				\$5,238.88
600 <u>Supplies</u>				
630 Food				2,419.70
Total Supplies				\$2,419.70
800 <u>Other Objects</u>				
810 Dues and Fees				19,918.23
Total Other Objects				\$19,918.23
Total 2310 Board Services				\$36,786.81

LEA : 124158503 Unionville-Chadds Ford SD

Printed 11/28/2023 9:36:34 AM

General Fund (10)

2330 Tax Assessment and Collection Services	<u>Elementary</u>	<u>Secondary</u>	<u>Federal</u>	<u>Total</u>
100 <u>Personnel Services – Salaries</u>				
100 Personnel Services – Salaries				560.25
Total Personnel Services – Salaries				\$560.25
200 <u>Personnel Services – Employee Benefits</u>				
220 Social Security Contributions				42.86
Total Personnel Services – Employee Benefits				\$42.86
300 <u>Purchased Professional and Technical Services</u>				
329 Professional Educational Services – Other				3,663.73
Total Purchased Professional and Technical Services				\$3,663.73
500 <u>Other Purchased Services</u>				
520 Insurance – General				4,694.13
530 Communications				290.00
Total Other Purchased Services				\$4,984.13
600 <u>Supplies</u>				
610 General Supplies				2,704.28
Total Supplies				\$2,704.28
Total 2330 Tax Assessment and Collection Services				\$11,955.25

LEA : 124158503 Unionville-Chadds Ford SD

Printed 11/28/2023 9:36:34 AM

General Fund (10)

2350 Legal and Accounting Services	<u>Elementary</u>	<u>Secondary</u>	<u>Federal</u>	<u>Total</u>
300 <u>Purchased Professional and Technical Services</u>				
330 Other Professional Services				277,228.58
Total Purchased Professional and Technical Services				\$277,228.58
Total 2350 Legal and Accounting Services				\$277,228.58

LEA : 124158503 Unionville-Chadds Ford SD

Printed 11/28/2023 9:36:34 AM

General Fund (10)				
2360 Office of the Superintendent / Executive Director Services	<u>Elementary</u>	<u>Secondary</u>	<u>Federal</u>	<u>Total</u>
100 <u>Personnel Services – Salaries</u>				
100 Personnel Services – Salaries			1,150.00	490,925.47
Total Personnel Services – Salaries			\$1,150.00	\$490,925.47
200 <u>Personnel Services – Employee Benefits</u>				
220 Social Security Contributions				35,012.30
230 PSERS Retirement Contributions				165,486.50
250 Unemployment Compensation				13.59
260 Workers' Compensation				3,671.59
270 Group Insurance – Self-Insurance				50,249.52
Total Personnel Services – Employee Benefits				\$254,433.50
300 <u>Purchased Professional and Technical Services</u>				
329 Professional Educational Services – Other				5,625.00
330 Other Professional Services				57,950.00
Total Purchased Professional and Technical Services				\$63,575.00
500 <u>Other Purchased Services</u>				
530 Communications	4,825.58	4,825.58		9,651.16
580 Travel				10,597.92
Total Other Purchased Services	\$4,825.58	\$4,825.58		\$20,249.08
600 <u>Supplies</u>				
630 Food				5,189.69
640 Books and Periodicals				3,262.53
Total Supplies				\$8,452.22
800 <u>Other Objects</u>				
810 Dues and Fees				7,116.00
Total Other Objects				\$7,116.00
Total 2360 Office of the Superintendent / Executive Director Services	\$4,825.58	\$4,825.58	\$1,150.00	\$844,751.27

LEA : 124158503 Unionville-Chadds Ford SD

Printed 11/28/2023 9:36:34 AM

General Fund (10)

2380 Office of the Principal Services	<u>Elementary</u>	<u>Secondary</u>	<u>Federal</u>	<u>Total</u>
100 <u>Personnel Services – Salaries</u>				
100 Personnel Services – Salaries	1,092,400.12	956,315.71	6,325.00	2,055,040.83
Total Personnel Services – Salaries	\$1,092,400.12	\$956,315.71	\$6,325.00	\$2,055,040.83
200 <u>Personnel Services – Employee Benefits</u>				
220 Social Security Contributions	79,615.96	70,158.88		149,774.84
230 PSERS Retirement Contributions	376,306.81	331,607.67		707,914.48
250 Unemployment Compensation	69.86	61.56		131.42
260 Workers' Compensation	8,348.98	7,357.25		15,706.23
270 Group Insurance – Self-Insurance	244,293.50	215,275.39		459,568.89
Total Personnel Services – Employee Benefits	\$708,635.11	\$624,460.75		\$1,333,095.86
300 <u>Purchased Professional and Technical Services</u>				
329 Professional Educational Services – Other	10,618.99	2,594.89		13,213.88
340 Technical Services		21,091.93		21,091.93
Total Purchased Professional and Technical Services	\$10,618.99	\$23,686.82		\$34,305.81
500 <u>Other Purchased Services</u>				
530 Communications	22,279.24	6,056.35		28,335.59
550 Printing and Binding	1,300.65	2,524.78		3,825.43
Total Other Purchased Services	\$23,579.89	\$8,581.13		\$32,161.02
600 <u>Supplies</u>				
610 General Supplies	9,891.67	24,705.62		34,597.29
630 Food	3,038.67	3,445.19		6,483.86
Total Supplies	\$12,930.34	\$28,150.81		\$41,081.15
Total 2380 Office of the Principal Services	\$1,848,164.45	\$1,641,195.22	\$6,325.00	\$3,495,684.67

LEA : 124158503 Unionville-Chadds Ford SD

Printed 11/28/2023 9:36:34 AM

General Fund (10)				
2400 Support Services – Pupil Health	Elementary	Secondary	Federal	Total
100 Personnel Services – Salaries				
100 Personnel Services – Salaries			2,300.00	509,784.50
Total Personnel Services – Salaries			\$2,300.00	\$509,784.50
200 Personnel Services – Employee Benefits				
220 Social Security Contributions				37,281.62
230 PSERS Retirement Contributions				176,212.48
250 Unemployment Compensation				45.32
260 Workers' Compensation				3,909.56
270 Group Insurance – Self-Insurance				160,560.59
Total Personnel Services – Employee Benefits				\$378,009.57
300 Purchased Professional and Technical Services				
329 Professional Educational Services – Other				4,754.00
330 Other Professional Services				7,412.00
Total Purchased Professional and Technical Services				\$12,166.00
400 Purchased Property Services				
410 Cleaning Services				231.00
430 Repairs and Maintenance Services				266.00
Total Purchased Property Services				\$497.00
600 Supplies				
610 General Supplies				7,125.68
650 Supplies & Fees – Technology Related				11,855.00
Total Supplies				\$18,980.68
700 Property				
762 Capitalized Equipment - Replacement				34,802.94
Total Property				\$34,802.94
Total 2400 Support Services – Pupil Health			\$2,300.00	\$954,240.69

LEA : 124158503 Unionville-Chadds Ford SD

Printed 11/28/2023 9:36:34 AM

General Fund (10)				
2440 Nursing Services				
	<u>Elementary</u>	<u>Secondary</u>	<u>Federal</u>	<u>Total</u>
100 <u>Personnel Services – Salaries</u>				
100 Personnel Services – Salaries			2,300.00	509,784.50
Total Personnel Services – Salaries			\$2,300.00	\$509,784.50
200 <u>Personnel Services – Employee Benefits</u>				
220 Social Security Contributions				37,281.62
230 PSERS Retirement Contributions				176,212.48
250 Unemployment Compensation				45.32
260 Workers' Compensation				3,909.56
270 Group Insurance – Self-Insurance				160,560.59
Total Personnel Services – Employee Benefits				\$378,009.57
300 <u>Purchased Professional and Technical Services</u>				
329 Professional Educational Services – Other				4,754.00
330 Other Professional Services				7,412.00
Total Purchased Professional and Technical Services				\$12,166.00
400 <u>Purchased Property Services</u>				
410 Cleaning Services				231.00
430 Repairs and Maintenance Services				266.00
Total Purchased Property Services				\$497.00
600 <u>Supplies</u>				
610 General Supplies				7,125.68
650 Supplies & Fees – Technology Related				11,855.00
Total Supplies				\$18,980.68
700 <u>Property</u>				
762 Capitalized Equipment - Replacement				34,802.94
Total Property				\$34,802.94
Total 2440 Nursing Services			\$2,300.00	\$954,240.69

LEA : 124158503 Unionville-Chadds Ford SD

Printed 11/28/2023 9:36:34 AM

General Fund (10)				
2500 Support Services – Business	Elementary	Secondary	Federal	Total
100 Personnel Services – Salaries				
100 Personnel Services – Salaries			1,725.00	523,000.63
Total Personnel Services – Salaries			\$1,725.00	\$523,000.63
200 Personnel Services – Employee Benefits				
220 Social Security Contributions				37,887.12
230 PSERS Retirement Contributions				179,277.03
250 Unemployment Compensation				27.19
260 Workers' Compensation				3,977.55
270 Group Insurance – Self-Insurance				64,866.64
Total Personnel Services – Employee Benefits				\$286,035.53
300 Purchased Professional and Technical Services				
329 Professional Educational Services – Other				102,593.22
Total Purchased Professional and Technical Services				\$102,593.22
400 Purchased Property Services				
430 Repairs and Maintenance Services				9,147.19
Total Purchased Property Services				\$9,147.19
500 Other Purchased Services				
530 Communications				4,267.49
580 Travel				1,721.42
591 Services Purchased Locally				29,770.35
Total Other Purchased Services				\$35,759.26
600 Supplies				
610 General Supplies				21,553.88
630 Food				22.07
Total Supplies				\$21,575.95
800 Other Objects				
810 Dues and Fees				2,005.81
Total Other Objects				\$2,005.81
Total 2500 Support Services – Business			\$1,725.00	\$980,117.59

LEA : 124158503 Unionville-Chadds Ford SD

Printed 11/28/2023 9:36:34 AM

General Fund (10)

2510 Fiscal Services

	<u>Elementary</u>	<u>Secondary</u>	<u>Federal</u>	<u>Total</u>
100 <u>Personnel Services – Salaries</u>				
100 Personnel Services – Salaries			1,725.00	523,000.63
Total Personnel Services – Salaries			\$1,725.00	\$523,000.63
200 <u>Personnel Services – Employee Benefits</u>				
220 Social Security Contributions				37,887.12
230 PSERS Retirement Contributions				179,277.03
250 Unemployment Compensation				27.19
260 Workers' Compensation				3,977.55
270 Group Insurance – Self-Insurance				64,866.64
Total Personnel Services – Employee Benefits				\$286,035.53
300 <u>Purchased Professional and Technical Services</u>				
329 Professional Educational Services – Other				102,593.22
Total Purchased Professional and Technical Services				\$102,593.22
400 <u>Purchased Property Services</u>				
430 Repairs and Maintenance Services				9,147.19
Total Purchased Property Services				\$9,147.19
500 <u>Other Purchased Services</u>				
530 Communications				4,267.49
580 Travel				1,721.42
Total Other Purchased Services				\$5,988.91
600 <u>Supplies</u>				
610 General Supplies				21,553.88
630 Food				22.07
Total Supplies				\$21,575.95
800 <u>Other Objects</u>				
810 Dues and Fees				2,005.81
Total Other Objects				\$2,005.81
Total 2510 Fiscal Services			\$1,725.00	\$950,347.24

LEA : 124158503 Unionville-Chadds Ford SD

Printed 11/28/2023 9:36:34 AM

General Fund (10)				
2511 Supervision of Fiscal Services - Head of Component	<u>Elementary</u>	<u>Secondary</u>	<u>Federal</u>	<u>Total</u>
100 <u>Personnel Services – Salaries</u>				
100 Personnel Services – Salaries				339,029.91
Total Personnel Services – Salaries				\$339,029.91
200 <u>Personnel Services – Employee Benefits</u>				
220 Social Security Contributions				24,626.24
230 PSERS Retirement Contributions				115,017.20
250 Unemployment Compensation				17.68
260 Workers' Compensation				2,586.94
270 Group Insurance – Self-Insurance				42,188.30
Total Personnel Services – Employee Benefits				\$184,436.36
300 <u>Purchased Professional and Technical Services</u>				
329 Professional Educational Services – Other				18,840.08
Total Purchased Professional and Technical Services				\$18,840.08
400 <u>Purchased Property Services</u>				
430 Repairs and Maintenance Services				9,147.19
Total Purchased Property Services				\$9,147.19
500 <u>Other Purchased Services</u>				
530 Communications				4,267.49
580 Travel				1,400.76
Total Other Purchased Services				\$5,668.25
600 <u>Supplies</u>				
610 General Supplies				5,388.47
630 Food				22.07
Total Supplies				\$5,410.54
800 <u>Other Objects</u>				
810 Dues and Fees				501.46
Total Other Objects				\$501.46
Total 2511 Supervision of Fiscal Services - Head of Component				\$563,033.79

LEA : 124158503 Unionville-Chadds Ford SD

Printed 11/28/2023 9:36:34 AM

General Fund (10)

2513 Receiving and Disbursing Funds Services	<u>Elementary</u>	<u>Secondary</u>	<u>Federal</u>	<u>Total</u>
100 <u>Personnel Services – Salaries</u>				
100 Personnel Services – Salaries			575.00	50,045.04
Total Personnel Services – Salaries			\$575.00	\$50,045.04
200 <u>Personnel Services – Employee Benefits</u>				
220 Social Security Contributions				3,599.62
230 PSERS Retirement Contributions				17,443.13
250 Unemployment Compensation				2.58
260 Workers' Compensation				377.48
270 Group Insurance – Self-Insurance				6,155.97
Total Personnel Services – Employee Benefits				\$27,578.78
300 <u>Purchased Professional and Technical Services</u>				
329 Professional Educational Services – Other				3,200.61
Total Purchased Professional and Technical Services				\$3,200.61
500 <u>Other Purchased Services</u>				
580 Travel				295.66
Total Other Purchased Services				\$295.66
600 <u>Supplies</u>				
610 General Supplies				5,388.47
Total Supplies				\$5,388.47
800 <u>Other Objects</u>				
810 Dues and Fees				501.45
Total Other Objects				\$501.45
Total 2513 Receiving and Disbursing Funds Services			\$575.00	\$87,010.01

LEA : 124158503 Unionville-Chadds Ford SD

Printed 11/28/2023 9:36:34 AM

General Fund (10)

2514 Payroll Services

	<u>Elementary</u>	<u>Secondary</u>	<u>Federal</u>	<u>Total</u>
100 <u>Personnel Services – Salaries</u>				
100 Personnel Services – Salaries			575.00	62,984.28
Total Personnel Services – Salaries			\$575.00	\$62,984.28
200 <u>Personnel Services – Employee Benefits</u>				
220 Social Security Contributions				4,541.13
230 PSERS Retirement Contributions				22,005.51
250 Unemployment Compensation				3.26
260 Workers' Compensation				476.21
270 Group Insurance – Self-Insurance				7,766.10
Total Personnel Services – Employee Benefits				\$34,792.21
300 <u>Purchased Professional and Technical Services</u>				
329 Professional Educational Services – Other				59,552.53
Total Purchased Professional and Technical Services				\$59,552.53
600 <u>Supplies</u>				
610 General Supplies				5,388.47
Total Supplies				\$5,388.47
800 <u>Other Objects</u>				
810 Dues and Fees				501.45
Total Other Objects				\$501.45
Total 2514 Payroll Services			\$575.00	\$163,218.94

LEA : 124158503 Unionville-Chadds Ford SD

Printed 11/28/2023 9:36:34 AM

General Fund (10)

2515 Financial Accounting Services	<u>Elementary</u>	<u>Secondary</u>	<u>Federal</u>	<u>Total</u>
100 <u>Personnel Services – Salaries</u>				
100 Personnel Services – Salaries			575.00	70,941.40
Total Personnel Services – Salaries			\$575.00	\$70,941.40
200 <u>Personnel Services – Employee Benefits</u>				
220 Social Security Contributions				5,120.13
230 PSERS Retirement Contributions				24,811.19
250 Unemployment Compensation				3.67
260 Workers' Compensation				536.92
270 Group Insurance – Self-Insurance				8,756.27
Total Personnel Services – Employee Benefits				\$39,228.18
300 <u>Purchased Professional and Technical Services</u>				
329 Professional Educational Services – Other				21,000.00
Total Purchased Professional and Technical Services				\$21,000.00
500 <u>Other Purchased Services</u>				
580 Travel				25.00
Total Other Purchased Services				\$25.00
600 <u>Supplies</u>				
610 General Supplies				5,388.47
Total Supplies				\$5,388.47
800 <u>Other Objects</u>				
810 Dues and Fees				501.45
Total Other Objects				\$501.45
Total 2515 Financial Accounting Services			\$575.00	\$137,084.50

LEA : 124158503 Unionville-Chadds Ford SD

Printed 11/28/2023 9:36:34 AM

General Fund (10)

2590 Other Support Services – Business	<u>Elementary</u>	<u>Secondary</u>	<u>Federal</u>	<u>Total</u>
500 <u>Other Purchased Services</u>				
591 Services Purchased Locally				29,770.35
Total Other Purchased Services				\$29,770.35
Total 2590 Other Support Services – Business				\$29,770.35

LEA : 124158503 Unionville-Chadds Ford SD

Printed 11/28/2023 9:36:34 AM

General Fund (10)				
2600 Operation and Maintenance of Plant Services	<u>Elementary</u>	<u>Secondary</u>	<u>Federal</u>	<u>Total</u>
100 <u>Personnel Services – Salaries</u>				
100 Personnel Services – Salaries			42,550.00	2,747,345.47
Total Personnel Services – Salaries			\$42,550.00	\$2,747,345.47
200 <u>Personnel Services – Employee Benefits</u>				
220 Social Security Contributions				200,348.17
230 PSERS Retirement Contributions				946,950.54
250 Unemployment Compensation				226.59
260 Workers' Compensation				21,009.62
270 Group Insurance – Self-Insurance				671,717.99
Total Personnel Services – Employee Benefits				\$1,840,252.91
300 <u>Purchased Professional and Technical Services</u>				
329 Professional Educational Services – Other				284,764.21
330 Other Professional Services				7,865.12
340 Technical Services				19,067.00
350 Security / Safety Services				576.94
Total Purchased Professional and Technical Services				\$312,273.27
400 <u>Purchased Property Services</u>				
410 Cleaning Services				47,809.57
420 Utility Services				131,645.59
430 Repairs and Maintenance Services				285,539.21
Total Purchased Property Services				\$464,994.37
500 <u>Other Purchased Services</u>				
521 Fire Insurance				168,155.00
523 General Property and Liability Insurance				71,721.00
529 Other Insurance				221,551.00
530 Communications				3,296.38
580 Travel				8,355.84
Total Other Purchased Services				\$473,079.22
600 <u>Supplies</u>				
610 General Supplies	232,670.93	232,670.93	52,878.00	518,219.86
620 Energy				1,096,104.72
Total Supplies	\$232,670.93	\$232,670.93	\$52,878.00	\$1,614,324.58
700 <u>Property</u>				
752 Capital Equipment – Original and Additional				5,339.26
762 Capitalized Equipment - Replacement				65,950.33
Total Property				\$71,289.59
Total 2600 Operation and Maintenance of Plant Services	\$232,670.93	\$232,670.93	\$95,428.00	\$7,523,559.41

LEA : 124158503 Unionville-Chadds Ford SD

Printed 11/28/2023 9:36:34 AM

General Fund (10)

2610 Supervision of Operation and Maintenance of Plant Services

Elementary Secondary Federal Total

100 <u>Personnel Services – Salaries</u>				
100 Personnel Services – Salaries				165,600.00
Total Personnel Services – Salaries				\$165,600.00
200 <u>Personnel Services – Employee Benefits</u>				
220 Social Security Contributions				12,076.26
230 PSERS Retirement Contributions				51,630.22
250 Unemployment Compensation				13.66
260 Workers' Compensation				1,266.38
270 Group Insurance – Self-Insurance				40,488.72
Total Personnel Services – Employee Benefits				\$105,475.24
500 <u>Other Purchased Services</u>				
530 Communications				3,296.38
580 Travel				4,534.31
Total Other Purchased Services				\$7,830.69
Total 2610 Supervision of Operation and Maintenance of Plant Services				\$278,905.93

LEA : 124158503 Unionville-Chadds Ford SD

Printed 11/28/2023 9:36:34 AM

General Fund (10)

2611 Supervision of Operation and Maintenance of Plant Services – Head of Component	<u>Elementary</u>	<u>Secondary</u>	<u>Federal</u>	<u>Total</u>
100 <u>Personnel Services – Salaries</u>				
100 Personnel Services – Salaries				165,600.00
Total Personnel Services – Salaries				\$165,600.00
200 <u>Personnel Services – Employee Benefits</u>				
220 Social Security Contributions				12,076.26
230 PSERS Retirement Contributions				51,630.22
250 Unemployment Compensation				13.66
260 Workers' Compensation				1,266.38
270 Group Insurance – Self-Insurance				40,488.72
Total Personnel Services – Employee Benefits				\$105,475.24
500 <u>Other Purchased Services</u>				
530 Communications				3,296.38
580 Travel				4,534.31
Total Other Purchased Services				\$7,830.69
Total 2611 Supervision of Operation and Maintenance of Plant Services – Head of Component				\$278,905.93

LEA : 124158503 Unionville-Chadds Ford SD

Printed 11/28/2023 9:36:34 AM

General Fund (10)				
2620 Operation of Buildings Services	Elementary	Secondary	Federal	Total
100 Personnel Services – Salaries				
100 Personnel Services – Salaries			39,675.00	2,247,360.80
Total Personnel Services – Salaries			\$39,675.00	\$2,247,360.80
200 Personnel Services – Employee Benefits				
220 Social Security Contributions				163,887.15
230 PSERS Retirement Contributions				778,430.01
250 Unemployment Compensation				185.35
260 Workers' Compensation				17,186.12
270 Group Insurance – Self-Insurance				549,473.19
Total Personnel Services – Employee Benefits				\$1,509,161.82
300 Purchased Professional and Technical Services				
329 Professional Educational Services – Other				284,764.21
330 Other Professional Services				7,865.12
340 Technical Services				19,067.00
350 Security / Safety Services				576.94
Total Purchased Professional and Technical Services				\$312,273.27
400 Purchased Property Services				
410 Cleaning Services				47,809.57
420 Utility Services				131,645.59
430 Repairs and Maintenance Services				285,539.21
Total Purchased Property Services				\$464,994.37
500 Other Purchased Services				
521 Fire Insurance				168,155.00
523 General Property and Liability Insurance				71,721.00
529 Other Insurance				221,551.00
580 Travel				3,593.53
Total Other Purchased Services				\$465,020.53
600 Supplies				
610 General Supplies	181,278.10	181,278.10		362,556.20
620 Energy				1,096,104.72
Total Supplies	\$181,278.10	\$181,278.10		\$1,458,660.92
700 Property				
752 Capital Equipment – Original and Additional				3,081.26
762 Capitalized Equipment - Replacement				65,950.33
Total Property				\$69,031.59
Total 2620 Operation of Buildings Services	\$181,278.10	\$181,278.10	\$39,675.00	\$6,526,503.30

LEA : 124158503 Unionville-Chadds Ford SD

Printed 11/28/2023 9:36:34 AM

General Fund (10)				
2630 Care and Upkeep of Grounds Services	<u>Elementary</u>	<u>Secondary</u>	<u>Federal</u>	<u>Total</u>
100 <u>Personnel Services – Salaries</u>				
100 Personnel Services – Salaries			2,875.00	334,384.67
Total Personnel Services – Salaries			\$2,875.00	\$334,384.67
200 <u>Personnel Services – Employee Benefits</u>				
220 Social Security Contributions				24,384.76
230 PSERS Retirement Contributions				116,890.31
250 Unemployment Compensation				27.58
260 Workers' Compensation				2,557.12
270 Group Insurance – Self-Insurance				81,756.08
Total Personnel Services – Employee Benefits				\$225,615.85
500 <u>Other Purchased Services</u>				
580 Travel				228.00
Total Other Purchased Services				\$228.00
600 <u>Supplies</u>				
610 General Supplies	51,392.83	51,392.83		102,785.66
Total Supplies	\$51,392.83	\$51,392.83		\$102,785.66
700 <u>Property</u>				
752 Capital Equipment – Original and Additional				2,258.00
Total Property				\$2,258.00
Total 2630 Care and Upkeep of Grounds Services	\$51,392.83	\$51,392.83	\$2,875.00	\$665,272.18

LEA : 124158503 Unionville-Chadds Ford SD

Printed 11/28/2023 9:36:34 AM

General Fund (10)

2660 Safety and Security Services

<u>Elementary</u>	<u>Secondary</u>	<u>Federal</u>	<u>Total</u>
-------------------	------------------	----------------	--------------

600 Supplies

610 General Supplies		52,878.00	52,878.00
----------------------	--	-----------	-----------

Total Supplies		\$52,878.00	\$52,878.00
----------------	--	-------------	-------------

Total 2660 Safety and Security Services		\$52,878.00	\$52,878.00
---	--	-------------	-------------

LEA : 124158503 Unionville-Chadds Ford SD

Printed 11/28/2023 9:36:34 AM

General Fund (10)

2700 Student Transportation Services	Elementary	Secondary	Federal	Total
100 <u>Personnel Services – Salaries</u>				
100 Personnel Services – Salaries			29,325.00	1,831,476.85
Total Personnel Services – Salaries			\$29,325.00	\$1,831,476.85
200 <u>Personnel Services – Employee Benefits</u>				
210 Group Insurance – Contracted Provider				9,394.96
220 Social Security Contributions				169,224.40
230 PSERS Retirement Contributions				589,978.10
240 Tuition Reimbursement				69.51
250 Unemployment Compensation				4,823.70
260 Workers' Compensation				278,108.42
270 Group Insurance – Self-Insurance				545,498.92
Total Personnel Services – Employee Benefits				\$1,597,098.01
300 <u>Purchased Professional and Technical Services</u>				
329 Professional Educational Services – Other				385.00
330 Other Professional Services				18,051.19
340 Technical Services				344.00
Total Purchased Professional and Technical Services				\$18,780.19
400 <u>Purchased Property Services</u>				
430 Repairs and Maintenance Services				15,366.90
440 Rentals				8,439.00
Total Purchased Property Services				\$23,805.90
500 <u>Other Purchased Services</u>				
516 Student Transportation Services From the IU				1,511.83
522 Automotive Liability Insurance				117,103.00
530 Communications				4,509.88
580 Travel				4,126.20
Total Other Purchased Services				\$127,250.91
600 <u>Supplies</u>				
610 General Supplies				190,050.53
620 Energy				257,169.44
630 Food				2,460.30
Total Supplies				\$449,680.27
700 <u>Property</u>				
762 Capitalized Equipment - Replacement				403,816.58
Total Property				\$403,816.58
Total 2700 Student Transportation Services			\$29,325.00	\$4,451,908.71

LEA : 124158503 Unionville-Chadds Ford SD

Printed 11/28/2023 9:36:34 AM

General Fund (10)

2710 Supervision of Student Transportation Services	<u>Elementary</u>	<u>Secondary</u>	<u>Federal</u>	<u>Total</u>
100 <u>Personnel Services – Salaries</u>				
100 Personnel Services – Salaries				126,150.63
Total Personnel Services – Salaries				\$126,150.63
200 <u>Personnel Services – Employee Benefits</u>				
210 Group Insurance – Contracted Provider				9,394.96
220 Social Security Contributions				44,405.55
230 PSERS Retirement Contributions				18.72
250 Unemployment Compensation				985.21
260 Workers' Compensation				56,992.42
Total Personnel Services – Employee Benefits				\$111,796.86
500 <u>Other Purchased Services</u>				
522 Automotive Liability Insurance				117,103.00
530 Communications				4,509.88
580 Travel				4,126.20
Total Other Purchased Services				\$125,739.08
600 <u>Supplies</u>				
630 Food				2,460.30
Total Supplies				\$2,460.30
Total 2710 Supervision of Student Transportation Services				\$366,146.87

LEA : 124158503 Unionville-Chadds Ford SD

Printed 11/28/2023 9:36:34 AM

General Fund (10)

2711 Supervision of Student Transportation Services – Head of Component	<u>Elementary</u>	<u>Secondary</u>	<u>Federal</u>	<u>Total</u>
100 <u>Personnel Services – Salaries</u>				
100 Personnel Services – Salaries				126,150.63
Total Personnel Services – Salaries				\$126,150.63
200 <u>Personnel Services – Employee Benefits</u>				
210 Group Insurance – Contracted Provider				9,394.96
220 Social Security Contributions				44,405.55
230 PSERS Retirement Contributions				18.72
250 Unemployment Compensation				985.21
260 Workers' Compensation				56,992.42
Total Personnel Services – Employee Benefits				\$111,796.86
500 <u>Other Purchased Services</u>				
522 Automotive Liability Insurance				117,103.00
530 Communications				4,509.88
580 Travel				4,126.20
Total Other Purchased Services				\$125,739.08
600 <u>Supplies</u>				
630 Food				2,460.30
Total Supplies				\$2,460.30
Total 2711 Supervision of Student Transportation Services – Head of Component				\$366,146.87

LEA : 124158503 Unionville-Chadds Ford SD

Printed 11/28/2023 9:36:34 AM

General Fund (10)

2720 Vehicle Operation Services

	<u>Elementary</u>	<u>Secondary</u>	<u>Federal</u>	<u>Total</u>
100 <u>Personnel Services – Salaries</u>				
100 Personnel Services – Salaries			27,025.00	1,054,251.55
Total Personnel Services – Salaries			\$27,025.00	\$1,054,251.55
200 <u>Personnel Services – Employee Benefits</u>				
220 Social Security Contributions				76,501.88
230 PSERS Retirement Contributions				361,588.01
250 Unemployment Compensation				152.40
260 Workers' Compensation				8,022.41
270 Group Insurance – Self-Insurance				464,081.17
Total Personnel Services – Employee Benefits				\$910,345.87
300 <u>Purchased Professional and Technical Services</u>				
329 Professional Educational Services – Other				385.00
330 Other Professional Services				18,051.19
340 Technical Services				344.00
Total Purchased Professional and Technical Services				\$18,780.19
500 <u>Other Purchased Services</u>				
516 Student Transportation Services From the IU				1,511.83
Total Other Purchased Services				\$1,511.83
Total 2720 Vehicle Operation Services			\$27,025.00	\$1,984,889.44

LEA : 124158503 Unionville-Chadds Ford SD

Printed 11/28/2023 9:36:34 AM

General Fund (10)

2730 Monitoring Services

	<u>Elementary</u>	<u>Secondary</u>	<u>Federal</u>	<u>Total</u>
100 <u>Personnel Services – Salaries</u>				
100 Personnel Services – Salaries			1,725.00	37,768.04
Total Personnel Services – Salaries			\$1,725.00	\$37,768.04
200 <u>Personnel Services – Employee Benefits</u>				
220 Social Security Contributions				2,684.27
230 PSERS Retirement Contributions				12,687.30
250 Unemployment Compensation				5.35
260 Workers' Compensation				281.49
270 Group Insurance – Self-Insurance				16,283.55
Total Personnel Services – Employee Benefits				\$31,941.96
Total 2730 Monitoring Services			\$1,725.00	\$69,710.00

LEA : 124158503 Unionville-Chadds Ford SD

Printed 11/28/2023 9:36:34 AM

General Fund (10)

2740 Vehicle Servicing and Maintenance Services

Elementary Secondary Federal Total

100 <u>Personnel Services – Salaries</u>				
100 Personnel Services – Salaries			575.00	144,747.15
Total Personnel Services – Salaries			\$575.00	\$144,747.15
200 <u>Personnel Services – Employee Benefits</u>				
220 Social Security Contributions				10,737.11
230 PSERS Retirement Contributions				50,749.19
250 Unemployment Compensation				21.39
260 Workers' Compensation				1,125.95
270 Group Insurance – Self-Insurance				65,134.20
Total Personnel Services – Employee Benefits				\$127,767.84
400 <u>Purchased Property Services</u>				
430 Repairs and Maintenance Services				15,366.90
440 Rentals				8,439.00
Total Purchased Property Services				\$23,805.90
600 <u>Supplies</u>				
610 General Supplies				190,050.53
620 Energy				257,169.44
Total Supplies				\$447,219.97
700 <u>Property</u>				
762 Capitalized Equipment - Replacement				403,816.58
Total Property				\$403,816.58
Total 2740 Vehicle Servicing and Maintenance Services			\$575.00	\$1,147,357.44

LEA : 124158503 Unionville-Chadds Ford SD

Printed 11/28/2023 9:36:34 AM

General Fund (10)

2750 Nonpublic Transportation				<u>Elementary</u>	<u>Secondary</u>	<u>Federal</u>	<u>Total</u>
100 <u>Personnel Services – Salaries</u>							
100 Personnel Services – Salaries							468,559.48
Total Personnel Services – Salaries							\$468,559.48
200 <u>Personnel Services – Employee Benefits</u>							
220 Social Security Contributions							34,895.59
230 PSERS Retirement Contributions							164,934.88
240 Tuition Reimbursement							69.51
250 Unemployment Compensation							3,659.35
260 Workers' Compensation							211,686.15
Total Personnel Services – Employee Benefits							\$415,245.48
Total 2750 Nonpublic Transportation							\$883,804.96

LEA : 124158503 Unionville-Chadds Ford SD

Printed 11/28/2023 9:36:34 AM

General Fund (10)					
2800 Support Services – Central		Elementary	Secondary	Federal	Total
100 <u>Personnel Services – Salaries</u>					
100 Personnel Services – Salaries				1,725.00	710,258.11
Total Personnel Services – Salaries				\$1,725.00	\$710,258.11
200 <u>Personnel Services – Employee Benefits</u>					
220 Social Security Contributions					52,194.26
230 PSERS Retirement Contributions					246,697.47
240 Tuition Reimbursement					46,598.00
250 Unemployment Compensation					36.25
260 Workers' Compensation					5,473.38
270 Group Insurance – Self-Insurance					121,366.83
Total Personnel Services – Employee Benefits					\$472,366.19
300 <u>Purchased Professional and Technical Services</u>					
330 Other Professional Services					47,289.90
Total Purchased Professional and Technical Services					\$47,289.90
500 <u>Other Purchased Services</u>					
550 Printing and Binding					5,570.03
580 Travel					5,554.43
Total Other Purchased Services					\$11,124.46
600 <u>Supplies</u>					
610 General Supplies					4,838.86
630 Food					20.98
640 Books and Periodicals					81.07
Total Supplies					\$4,940.91
700 <u>Property</u>					
752 Capital Equipment – Original and Additional					2,817.38
Total Property					\$2,817.38
800 <u>Other Objects</u>					
810 Dues and Fees					2,180.50
Total Other Objects					\$2,180.50
Total 2800 Support Services – Central				\$1,725.00	\$1,250,977.45

LEA : 124158503 Unionville-Chadds Ford SD

Printed 11/28/2023 9:36:34 AM

General Fund (10)

2810 Planning, Research, Development and Evaluation Services	<u>Elementary</u>	<u>Secondary</u>	<u>Federal</u>	<u>Total</u>
100 <u>Personnel Services – Salaries</u>				
100 Personnel Services – Salaries			1,150.00	525,751.83
Total Personnel Services – Salaries			\$1,150.00	\$525,751.83
200 <u>Personnel Services – Employee Benefits</u>				
220 Social Security Contributions				38,578.37
230 PSERS Retirement Contributions				182,341.61
250 Unemployment Compensation				31.72
260 Workers' Compensation				4,045.54
270 Group Insurance – Self-Insurance				111,842.03
Total Personnel Services – Employee Benefits				\$336,839.27
500 <u>Other Purchased Services</u>				
580 Travel				649.82
Total Other Purchased Services				\$649.82
700 <u>Property</u>				
752 Capital Equipment – Original and Additional				1,919.38
Total Property				\$1,919.38
Total 2810 Planning, Research, Development and Evaluation Services			\$1,150.00	\$865,160.30

LEA : 124158503 Unionville-Chadds Ford SD

Printed 11/28/2023 9:36:34 AM

General Fund (10)				
2820 Information Services	<u>Elementary</u>	<u>Secondary</u>	<u>Federal</u>	<u>Total</u>
100 <u>Personnel Services – Salaries</u>				
100 Personnel Services – Salaries			575.00	184,506.28
Total Personnel Services – Salaries			\$575.00	\$184,506.28
200 <u>Personnel Services – Employee Benefits</u>				
220 Social Security Contributions				13,615.89
230 PSERS Retirement Contributions				64,355.86
250 Unemployment Compensation				4.53
260 Workers' Compensation				1,427.84
270 Group Insurance – Self-Insurance				9,524.80
Total Personnel Services – Employee Benefits				\$88,928.92
300 <u>Purchased Professional and Technical Services</u>				
330 Other Professional Services				47,289.90
Total Purchased Professional and Technical Services				\$47,289.90
500 <u>Other Purchased Services</u>				
550 Printing and Binding				5,570.03
580 Travel				4,904.61
Total Other Purchased Services				\$10,474.64
600 <u>Supplies</u>				
610 General Supplies				4,838.86
630 Food				20.98
640 Books and Periodicals				81.07
Total Supplies				\$4,940.91
700 <u>Property</u>				
752 Capital Equipment – Original and Additional				898.00
Total Property				\$898.00
800 <u>Other Objects</u>				
810 Dues and Fees				2,180.50
Total Other Objects				\$2,180.50
Total 2820 Information Services			\$575.00	\$339,219.15

LEA : 124158503 Unionville-Chadds Ford SD

Printed 11/28/2023 9:36:34 AM

General Fund (10)				
2821 Supervision of Information Services	Elementary	Secondary	Federal	Total
100 Personnel Services – Salaries				
100 Personnel Services – Salaries			575.00	184,506.28
Total Personnel Services – Salaries			\$575.00	\$184,506.28
200 Personnel Services – Employee Benefits				
220 Social Security Contributions				13,615.89
230 PSERS Retirement Contributions				64,355.86
250 Unemployment Compensation				4.53
260 Workers' Compensation				1,427.84
270 Group Insurance – Self-Insurance				9,524.80
Total Personnel Services – Employee Benefits				\$88,928.92
300 Purchased Professional and Technical Services				
330 Other Professional Services				47,289.90
Total Purchased Professional and Technical Services				\$47,289.90
500 Other Purchased Services				
550 Printing and Binding				5,570.03
580 Travel				4,904.61
Total Other Purchased Services				\$10,474.64
600 Supplies				
610 General Supplies				4,838.86
630 Food				20.98
640 Books and Periodicals				81.07
Total Supplies				\$4,940.91
700 Property				
752 Capital Equipment – Original and Additional				898.00
Total Property				\$898.00
800 Other Objects				
810 Dues and Fees				2,180.50
Total Other Objects				\$2,180.50
Total 2821 Supervision of Information Services			\$575.00	\$339,219.15

LEA : 124158503 Unionville-Chadds Ford SD

Printed 11/28/2023 9:36:34 AM

General Fund (10)

2830 Staff Services

<u>Elementary</u>	<u>Secondary</u>	<u>Federal</u>	<u>Total</u>
-------------------	------------------	----------------	--------------

200 Personnel Services – Employee Benefits

240 Tuition Reimbursement			46,598.00
---------------------------	--	--	-----------

Total Personnel Services – Employee Benefits			\$46,598.00
---	--	--	--------------------

Total 2830 Staff Services			\$46,598.00
----------------------------------	--	--	--------------------

LEA : 124158503 Unionville-Chadds Ford SD

Printed 11/28/2023 9:36:34 AM

General Fund (10)

2834 Staff Development Services – Non-Instructional, Certified Staff Only	<u>Elementary</u>	<u>Secondary</u>	<u>Federal</u>	<u>Total</u>
200 <u>Personnel Services – Employee Benefits</u>				
240 Tuition Reimbursement				35,213.00
Total Personnel Services – Employee Benefits				\$35,213.00
Total 2834 Staff Development Services – Non-Instructional, Certified Staff Only				\$35,213.00

LEA : 124158503 Unionville-Chadds Ford SD

Printed 11/28/2023 9:36:34 AM

General Fund (10)

2836 Staff Development Services – Non-Instructional, Non-Certified Staff Only	<u>Elementary</u>	<u>Secondary</u>	<u>Federal</u>	<u>Total</u>
200 <u>Personnel Services – Employee Benefits</u>				
240 Tuition Reimbursement				11,385.00
Total Personnel Services – Employee Benefits				\$11,385.00
Total 2836 Staff Development Services – Non-Instructional, Non-Certified Staff Only				\$11,385.00

LEA : 124158503 Unionville-Chadds Ford SD

Printed 11/28/2023 9:36:34 AM

General Fund (10)

2900 Other Support Services	<u>Elementary</u>	<u>Secondary</u>	<u>Federal</u>	<u>Total</u>
500 <u>Other Purchased Services</u>				
595 IU Payments By Withholding				40,788.82
Total Other Purchased Services				\$40,788.82
Total 2900 Other Support Services				\$40,788.82

LEA : 124158503 Unionville-Chadds Ford SD

Printed 11/28/2023 9:36:34 AM

General Fund (10)

2910 Support Services Not Listed Elsewhere In the 2000 Series

Elementary Secondary Federal Total

500 Other Purchased Services

595 IU Payments By Withholding 40,788.82

Total Other Purchased Services \$40,788.82

Total 2910 Support Services Not Listed Elsewhere In the 2000 Series \$40,788.82

LEA : 124158503 Unionville-Chadds Ford SD

Printed 11/28/2023 9:36:38 AM

General Fund (10)

3000 Operation of Non-Instructional Services		<u>Total</u>
100 <u>Personnel Services – Salaries</u>		
100 Personnel Services – Salaries	1,117,666.50	
Total Personnel Services – Salaries	\$1,117,666.50	
200 <u>Personnel Services – Employee Benefits</u>		
220 Social Security Contributions	82,343.74	
230 PSERS Retirement Contributions	389,199.74	
250 Unemployment Compensation	18.13	
260 Workers' Compensation	8,635.03	
270 Group Insurance – Self-Insurance	41,366.55	
Total Personnel Services – Employee Benefits	\$521,563.19	
300 <u>Purchased Professional and Technical Services</u>		
329 Professional Educational Services – Other	42,975.00	
330 Other Professional Services	81,408.77	
Total Purchased Professional and Technical Services	\$124,383.77	
400 <u>Purchased Property Services</u>		
430 Repairs and Maintenance Services	15,104.06	
Total Purchased Property Services	\$15,104.06	
500 <u>Other Purchased Services</u>		
520 Insurance – General	12,400.00	
580 Travel	26,774.02	
591 Services Purchased Locally	600.00	
Total Other Purchased Services	\$39,774.02	
600 <u>Supplies</u>		
610 General Supplies	90,847.89	
Total Supplies	\$90,847.89	
700 <u>Property</u>		
752 Capital Equipment – Original and Additional	27,098.28	
Total Property	\$27,098.28	
800 <u>Other Objects</u>		
810 Dues and Fees	22,996.98	
Total Other Objects	\$22,996.98	
Total 3000 Operation of Non-Instructional Services	\$1,959,434.69	

LEA : 124158503 Unionville-Chadds Ford SD

Printed 11/28/2023 9:36:38 AM

General Fund (10)

3200 Student Activities

	<u>Elementary</u>	<u>Secondary</u>	<u>Federal</u>	<u>Total</u>
100 <u>Personnel Services – Salaries</u>				
100 Personnel Services – Salaries				1,106,380.16
Total Personnel Services – Salaries				\$1,106,380.16
200 <u>Personnel Services – Employee Benefits</u>				
220 Social Security Contributions				81,371.18
230 PSERS Retirement Contributions				384,602.89
250 Unemployment Compensation				18.13
260 Workers' Compensation				8,533.04
270 Group Insurance – Self-Insurance				41,366.55
Total Personnel Services – Employee Benefits				\$515,891.79
300 <u>Purchased Professional and Technical Services</u>				
329 Professional Educational Services – Other				42,975.00
330 Other Professional Services				81,408.77
Total Purchased Professional and Technical Services				\$124,383.77
400 <u>Purchased Property Services</u>				
430 Repairs and Maintenance Services				15,104.06
Total Purchased Property Services				\$15,104.06
500 <u>Other Purchased Services</u>				
520 Insurance – General				12,400.00
580 Travel				26,774.02
Total Other Purchased Services				\$39,174.02
600 <u>Supplies</u>				
610 General Supplies				90,847.89
Total Supplies				\$90,847.89
700 <u>Property</u>				
752 Capital Equipment – Original and Additional				27,098.28
Total Property				\$27,098.28
800 <u>Other Objects</u>				
810 Dues and Fees				22,996.98
Total Other Objects				\$22,996.98
Total 3200 Student Activities				\$1,941,876.95

LEA : 124158503 Unionville-Chadds Ford SD

Printed 11/28/2023 9:36:38 AM

General Fund (10)

3300 Community Services	<u>Elementary</u>	<u>Secondary</u>	<u>Federal</u>	<u>Total</u>
100 <u>Personnel Services – Salaries</u>				
100 Personnel Services – Salaries				11,286.34
Total Personnel Services – Salaries				\$11,286.34
200 <u>Personnel Services – Employee Benefits</u>				
220 Social Security Contributions				972.56
230 PSERS Retirement Contributions				4,596.85
260 Workers’ Compensation				101.99
Total Personnel Services – Employee Benefits				\$5,671.40
500 <u>Other Purchased Services</u>				
591 Services Purchased Locally				600.00
Total Other Purchased Services				\$600.00
Total 3300 Community Services				\$17,557.74

LEA : 124158503 Unionville-Chadds Ford SD

Printed 11/28/2023 9:36:47 AM

General Fund (10)

5000 Other Expenditures and Financing Uses		<u>Total</u>
800 <u>Other Objects</u>		
830 Interest		3,276,479.42
880 Refunds of Prior Years' Receipts		10,054.70
Total Other Objects		\$3,286,534.12
900 <u>Other Uses of Funds</u>		
910 Redemption of Principal		5,863,659.00
932 Capital Reserve Fund Transfers Applicable To Fund 32		500,000.00
Total Other Uses of Funds		\$6,363,659.00
Total 5000 Other Expenditures and Financing Uses		\$9,650,193.12

LEA : 124158503 Unionville-Chadds Ford SD

Printed 11/28/2023 9:36:47 AM

General Fund (10)

5100 Debt Service / Other Expenditures and Financing Uses	<u>Elementary</u>	<u>Secondary</u>	<u>Federal</u>	<u>Total</u>
800 <u>Other Objects</u>				
830 Interest				3,276,479.42
880 Refunds of Prior Years' Receipts				10,054.70
Total Other Objects				\$3,286,534.12
900 <u>Other Uses of Funds</u>				
910 Redemption of Principal				5,863,659.00
Total Other Uses of Funds				\$5,863,659.00
Total 5100 Debt Service / Other Expenditures and Financing Uses				\$9,150,193.12

LEA : 124158503 Unionville-Chadds Ford SD

Printed 11/28/2023 9:36:47 AM

General Fund (10)

5110 Debt Service	<u>Elementary</u>	<u>Secondary</u>	<u>Federal</u>	<u>Total</u>
800 <u>Other Objects</u>				
830 Interest				3,269,038.21
Total Other Objects				\$3,269,038.21
900 <u>Other Uses of Funds</u>				
910 Redemption of Principal				5,775,000.00
Total Other Uses of Funds				\$5,775,000.00
Total 5110 Debt Service				\$9,044,038.21

LEA : 124158503 Unionville-Chadds Ford SD

Printed 11/28/2023 9:36:47 AM

General Fund (10)

5130 Refund of Prior Year Revenues / Receipts	<u>Elementary</u>	<u>Secondary</u>	<u>Federal</u>	<u>Total</u>
800 <u>Other Objects</u>				
880 Refunds of Prior Years' Receipts				10,054.70
Total Other Objects				\$10,054.70
Total 5130 Refund of Prior Year Revenues / Receipts				\$10,054.70

LEA : 124158503 Unionville-Chadds Ford SD

Printed 11/28/2023 9:36:47 AM

General Fund (10)

5140 Leases and Other Right-to-Use Arrangements	<u>Elementary</u>	<u>Secondary</u>	<u>Federal</u>	<u>Total</u>
800 <u>Other Objects</u>				
830 Interest				7,441.21
Total Other Objects				\$7,441.21
900 <u>Other Uses of Funds</u>				
910 Redemption of Principal				88,659.00
Total Other Uses of Funds				\$88,659.00
Total 5140 Leases and Other Right-to-Use Arrangements				\$96,100.21

LEA : 124158503 Unionville-Chadds Ford SD

Printed 11/28/2023 9:36:47 AM

General Fund (10)

5200 Interfund Transfers – Out	<u>Elementary</u>	<u>Secondary</u>	<u>Federal</u>	<u>Total</u>
900 <u>Other Uses of Funds</u>				
932 Capital Reserve Fund Transfers Applicable To Fund 32				500,000.00
Total Other Uses of Funds				\$500,000.00
Total 5200 Interfund Transfers – Out				\$500,000.00

LEA : 124158503 Unionville-Chadds Ford SD

Printed 11/28/2023 9:36:47 AM

General Fund (10)

5230 Capital Projects Fund Transfers	<u>Elementary</u>	<u>Secondary</u>	<u>Federal</u>	<u>Total</u>
900 <u>Other Uses of Funds</u>				
932 Capital Reserve Fund Transfers Applicable To Fund 32				500,000.00
Total Other Uses of Funds				\$500,000.00
Total 5230 Capital Projects Fund Transfers				\$500,000.00

LEA : 124158503 Unionville-Chadds Ford SD

Printed 11/28/2023 9:36:41 AM

Capital Reserve Fund - § 1431 (32)

4000 Facilities Acquisition, Construction and Improvement Services

Total

700 <u>Property</u>	
762 Capitalized Equipment - Replacement	154,081.92
Total Property	\$154,081.92
Total 4000 Facilities Acquisition, Construction and Improvement Services	\$154,081.92

LEA : 124158503 Unionville-Chadds Ford SD

Printed 11/28/2023 9:36:41 AM

Capital Reserve Fund - § 1431 (32)

4600 Existing Building Improvement Services	<u>Elementary</u>	<u>Secondary</u>	<u>Federal</u>	<u>Total</u>
700 <u>Property</u>				
762 Capitalized Equipment - Replacement				154,081.92
Total Property				\$154,081.92
Total 4600 Existing Building Improvement Services				\$154,081.92

LEA : 124158503 Unionville-Chadds Ford SD

Printed 11/28/2023 9:36:44 AM

Other Capital Projects Fund (39)

4000 Facilities Acquisition, Construction and Improvement Services

Total

300 Purchased Professional and Technical Services

330 Other Professional Services	290.00
---------------------------------	--------

Total Purchased Professional and Technical Services	\$290.00
---	----------

700 Property

762 Capitalized Equipment - Replacement	4,177,873.80
---	--------------

Total Property	\$4,177,873.80
----------------	----------------

Total 4000 Facilities Acquisition, Construction and Improvement Services	\$4,178,163.80
--	----------------

LEA : 124158503 Unionville-Chadds Ford SD

Printed 11/28/2023 9:36:44 AM

Other Capital Projects Fund (39)

4600 Existing Building Improvement Services	<u>Elementary</u>	<u>Secondary</u>	<u>Federal</u>	<u>Total</u>
300 <u>Purchased Professional and Technical Services</u>				
330 Other Professional Services				290.00
Total Purchased Professional and Technical Services				\$290.00
700 <u>Property</u>				
762 Capitalized Equipment - Replacement				4,177,873.80
Total Property				\$4,177,873.80
Total 4600 Existing Building Improvement Services				\$4,178,163.80

LEA : 124158503 Unionville-Chadds Ford SD

Printed 11/28/2023 9:36:50 AM

	General Fund(10)	Student Sponsored Activity Fund(21)	Public Purpose Trust(27)	Other Compt Approved (28)	Athletic / Activity(29)
1000 Instruction					
1100 Regular Programs - Elementary / Secondary	39,289,605.88				
1200 Special Programs - Elementary / Secondary	16,914,114.81				
1300 Vocational Education	884,946.28				
1400 Other Instructional Programs - Elementary / Secondary	159,512.70				
Total Instruction	\$57,248,179.67				
2000 Support Services					
2100 Support Services - Students	4,391,375.36				
2200 Support Services - Instructional Staff	5,580,758.38				
2300 Support Services - Administration	4,666,406.58				
2400 Support Services - Pupil Health	954,240.69				
2500 Support Services - Business	980,117.59				
2600 Operation and Maintenance of Plant Services	7,523,559.41				
2700 Student Transportation Services	4,451,908.71				
2800 Support Services - Central	1,250,977.45				
2900 Other Support Services	40,788.82				
Total Support Services	\$29,840,132.99				
3000 Operation of Non-Instructional Services					
3200 Student Activities	1,941,876.95				
3300 Community Services	17,557.74				
Total Operation of Non-Instructional Services	\$1,959,434.69				
4000 Facilities Acquisition, Construction and Improvement Services					
4600 Existing Building Improvement Services					
Total Facilities Acquisition, Construction and Improvement Services					
5000 Other Expenditures and Financing Uses					
5100 Debt Service / Other Expenditures and Financing Uses	9,150,193.12				
5200 Interfund Transfers - Out	500,000.00				
Total Other Expenditures and Financing Uses	\$9,650,193.12				
TOTAL ACTUAL EXPENDITURES & OTHER FINANCING USES	\$98,697,940.47				

LEA : 124158503 Unionville-Chadds Ford SD

Printed 11/28/2023 9:36:50 AM

	<u>Capital Reserve (690.1850)(31)</u>	<u>Capital Reserve (1431)(32)</u>	<u>Other Capital Projects Fund(39)</u>	<u>Debt Service(40)</u>	<u>Permanent(90)</u>
1000 <u>Instruction</u>					
1100 Regular Programs - Elementary / Secondary					
1200 Special Programs - Elementary / Secondary					
1300 Vocational Education					
1400 Other Instructional Programs - Elementary / Secondary					
Total Instruction					
2000 <u>Support Services</u>					
2100 Support Services - Students					
2200 Support Services - Instructional Staff					
2300 Support Services - Administration					
2400 Support Services - Pupil Health					
2500 Support Services - Business					
2600 Operation and Maintenance of Plant Services					
2700 Student Transportation Services					
2800 Support Services - Central					
2900 Other Support Services					
Total Support Services					
3000 <u>Operation of Non-Instructional Services</u>					
3200 Student Activities					
3300 Community Services					
Total Operation of Non-Instructional Services					
4000 <u>Facilities Acquisition, Construction and Improvement Services</u>					
4600 Existing Building Improvement Services		154,081.92	4,178,163.80		
Total Facilities Acquisition, Construction and Improvement Services		\$154,081.92	\$4,178,163.80		
5000 <u>Other Expenditures and Financing Uses</u>					
5100 Debt Service / Other Expenditures and Financing Uses					
5200 Interfund Transfers - Out					
Total Other Expenditures and Financing Uses					
TOTAL ACTUAL EXPENDITURES & OTHER FINANCING USES		\$154,081.92	\$4,178,163.80		

LEA : 124158503 Unionville-Chadds Ford SD

Printed 11/28/2023 9:36:50 AM

	<u>Total</u>
1000 <u>Instruction</u>	
1100 Regular Programs - Elementary / Secondary	39,289,605.88
1200 Special Programs - Elementary / Secondary	16,914,114.81
1300 Vocational Education	884,946.28
1400 Other Instructional Programs - Elementary / Secondary	159,512.70
Total Instruction	\$57,248,179.67
2000 <u>Support Services</u>	
2100 Support Services - Students	4,391,375.36
2200 Support Services - Instructional Staff	5,580,758.38
2300 Support Services - Administration	4,666,406.58
2400 Support Services - Pupil Health	954,240.69
2500 Support Services - Business	980,117.59
2600 Operation and Maintenance of Plant Services	7,523,559.41
2700 Student Transportation Services	4,451,908.71
2800 Support Services - Central	1,250,977.45
2900 Other Support Services	40,788.82
Total Support Services	\$29,840,132.99
3000 <u>Operation of Non-Instructional Services</u>	
3200 Student Activities	1,941,876.95
3300 Community Services	17,557.74
Total Operation of Non-Instructional Services	\$1,959,434.69
4000 <u>Facilities Acquisition, Construction and Improvement Services</u>	
4600 Existing Building Improvement Services	4,332,245.72
Total Facilities Acquisition, Construction and Improvement Services	\$4,332,245.72
5000 <u>Other Expenditures and Financing Uses</u>	
5100 Debt Service / Other Expenditures and Financing Uses	9,150,193.12
5200 Interfund Transfers - Out	500,000.00
Total Other Expenditures and Financing Uses	\$9,650,193.12
TOTAL ACTUAL EXPENDITURES & OTHER FINANCING USES	\$103,030,186.19

LEA : 124158503 Unionville-Chadds Ford SD

Printed 11/28/2023 9:37:00 AM

PSERS Salary Data (Salary Data should relate to the General Fund only)

Amount	Description	Amount
	Total Salary Base for salaries subject to PSERS withholding	44,088,798.35
	Total Federally Funded salaries subject to PSERS withholding	941,132.54

Title I Expenditure Data

Amount	Description	Amount
	Expenditures Funded with Current Title I Funds	93,239.00
	Expenditures Funded with Carry over Title I Funds	
Total	Title I Expenditure Data	\$93,239.00

Title IV Revenue Data

Amount	Description	Amount
	Revenue from Title IV-A-1: Student Support and Academic Enrichment Grants	
	Revenue from Title IV-B: 21st Century Community Learning Centers	10,000.00

Title V Revenue Data

Amount	Description	Amount
	Revenue from Title V-B-2: Rural and Low-Income School Programs	
	Revenue from Title V-B-1: Small Rural School Achievement (Directly from the Federal Govt)	

1 .	<u>Current Special Education Expenditures within Function 1000</u> See list of exclusions in the note below.	12,853,959.34
2 .	<u>Current Special Education Expenditures within Function 2000</u> See list of exclusions in the note below.	5,965,335.17
2A.	<u>Current Special Education Expenditures within Sub-Function 2100</u> This data should also be included in line 2 above. See list of exclusions in the note below.	1,984,060.54
2B.	<u>Current Special Education Expenditures within Sub-Function 2200</u> This data should also be included in line 2 above. See list of exclusions in the note below.	918,652.95
2C.	<u>Current Special Education Expenditures within Sub-Function 2700</u> This data should also be included in line 2 above. See list of exclusions in the note below.	559,954.93
3.	<u>Current Special Education Expenditures within Sub-Function 3100</u> See list of exclusions in the note below.	
4.	<u>Current Special Education Expenditures within Sub-Function 3200</u> See list of exclusions in the note below.	304,874.68

Note: The Current Special Education Expenditure amounts for each line should be calculated as follows:

- * Include the total expenditures for special education costs from all governmental funds and the food service fund 51 for the function/sub-function requested
- * Exclude data from sub-functions: 1243,1450,1500,1600,1807,2280,2450,2750,2990
- * Exclude data from objects: 322,511,512,516,561,562,564,566,592,593,594,595,596,597,700,830,899

Benefits for Staff Relative to Collective Bargaining Agreements

	OBJECT	COVERED	NOT COVERED	TOTAL
10 General Fund				
	211 Medical Insurance			
	212 Dental Insurance			
	215 Eye Care Insurance			
	216 Prescription Insurance			
	271 Self-Insurance Medical Benefits	4,077,541.07	2,718,360.72	6,795,901.79
	272 Self-Insurance Dental Benefits	308,269.80	214,221.39	522,491.19
	275 Self-Insurance Eye Care Benefits	52,399.15	36,412.97	88,812.12
	276 Self-Insurance Prescription Benefits	1,217,966.81	811,977.88	2,029,944.69
	FUND TOTAL	\$5,656,176.83	\$3,780,972.96	\$9,437,149.79
50 Enterprise Fund	No Self Insurance data to report			
	211 Medical Insurance			
	212 Dental Insurance			
	215 Eye Care Insurance			
	216 Prescription Insurance			
	271 Self-Insurance Medical Benefits			
	272 Self-Insurance Dental Benefits			
	275 Self-Insurance Eye Care Benefits			
	276 Self-Insurance Prescription Benefits			
	FUND TOTAL			
60 Internal Service Fund	No Self Insurance data to report			
	211 Medical Insurance			
	212 Dental Insurance			
	215 Eye Care Insurance			
	216 Prescription Insurance			
	271 Self-Insurance Medical Benefits			
	272 Self-Insurance Dental Benefits			
	275 Self-Insurance Eye Care Benefits			
	276 Self-Insurance Prescription Benefits			
	FUND TOTAL			
Total of All Funds		\$5,656,176.83	\$3,780,972.96	\$9,437,149.79

LEA : 124158503 Unionville-Chadds Ford SD

Printed 11/28/2023 9:37:07 AM

Function	Special Education (Prior Year)	Nonspecial Education (Prior Year)	Total (Prior Year)	Special Education (Current Year)	Nonspecial Education (Current Year)	Total (Current Year)
2120 Guidance Services	841,685.72	1,563,130.61	2,404,816.33	880,932.98	1,636,018.40	2,516,951.38
2140 Psychological Services	919,776.10	48,409.27	968,185.37	898,598.73	47,294.67	945,893.40
2150 Speech Pathology and Audiology Services						
2160 Social Work Services						
2260 Instruction and Curriculum Development Services	212,128.46	848,513.83	1,060,642.29	197,552.96	790,211.84	987,764.80
2350 Legal and Accounting Services	66,611.50	144,939.06	211,550.56	91,547.99	185,680.59	277,228.58
2420 Medical Services						
2440 Nursing Services	233,176.30	699,528.89	932,705.19	238,560.17	715,680.52	954,240.69
2700 Student Transportation Services	449,182.18	3,869,877.24	4,319,059.42	462,998.51	3,988,910.20	4,451,908.71
Total	\$2,722,560.26	\$7,174,398.90	\$9,896,959.16	\$2,770,191.34	\$7,363,796.22	\$10,133,987.56

LEA : 124158503 Unionville-Chadds Ford SD

(PRINCIPAL AMOUNTS ONLY)								
<u>GOVERNMENTAL FUNDS/ ACTIVITIES</u>	Short-Term Borrowing	General Obligation Bonds/Notes	Authority Building Obligations	Leases, Other Right to Use Arrangements	Extended Term Financing Agreements	Other Long Term Debt/Liabilities	OPEB, Comp Abs, Net Pension Liab	Total
1. Debt at Beginning of Fiscal Year		75,415,000.00		174,956.00			123,994,145.00	199,584,101.00
2. Additional Debt Incurred During Year							10,738,858.00	10,738,858.00
3. Retirements and Repayments		5,775,000.00		88,659.00			622,210.00	6,485,869.00
4. Debt at End of Fiscal Year		69,640,000.00		86,297.00			134,110,793.00	203,837,090.00
5. Accreted Interest at End Of Fiscal Year								
6. Total Debt and Accreted Interest		69,640,000.00		86,297.00			134,110,793.00	203,837,090.00
7. Current Portion P&I - Due within 1 year		9,302,125.00		88,308.40			37,622.00	9,428,055.40
8. Interest Paid during current fiscal year		3,269,038.19		7,441.21				3,276,479.40

(PRINCIPAL AMOUNTS ONLY)								
<u>PROPRIETARY FUNDS</u>	Short-Term Borrowing	General Obligation Bonds/Notes	Authority Building Obligations	Leases, Other Right to Use Arrangements	Extended Term Financing Agreements	Other Long Term Debt/Liabilities	OPEB, Comp Abs, Net Pension Liab	Total
1. Debt at Beginning of Fiscal Year							1,635,249.00	1,635,249.00
2. Additional Debt Incurred During Year							67,954.00	67,954.00
3. Retirements and Repayments								
4. Debt at End of Fiscal Year							1,703,203.00	1,703,203.00
5. Accreted Interest at End Of Fiscal Year								
6. Total Debt and Accreted Interest							1,703,203.00	1,703,203.00
7. Current Portion P&I - Due within 1 year								
8. Interest Paid during current fiscal year								

LEA : 124158503 Unionville-Chadds Ford SD

Total Principal and Interest Payments Made by Your School - All Funds

Function	Fund		Principal (910)	Principal (920)	Interest (830)	Total (Principal +Interest)	Misc Other Uses (990)
5110	10	General Fund	5,775,000.00		3,269,038.21	9,044,038.21	
5110	20	Special Revenue Funds					
5110	30	Capital Projects Funds					
5110	40	Debt Service Fund					
5110	90	Permanent Fund					
5120	10	General Fund					
5120	20	Special Revenue Funds					
5120	30	Capital Projects Funds					
5120	40	Debt Service Fund					
5140	10	General Fund	88,659.00		7,441.21	96,100.21	
5140	20	Special Revenue Funds					
5140	30	Capital Projects Funds					
5140	40	Debt Service Fund					
5140	90	Permanent Fund					
Total Debt Payments - Governmental Funds			\$5,863,659.00		\$3,276,479.42	\$9,140,138.42	

Function	Fund		Principal (910)	Principal (920)	Interest (830)	Total (Principal +Interest)
5110	50	Enterprise Fund				
5110	60	Internal Service Fund				
5120	50	Enterprise Fund				
5120	60	Internal Service Fund				
5140	50	Enterprise Fund				
5140	60	Internal Service Fund				
Total Debt Payments - Proprietary Funds						

LEA : 124158503 Unionville-Chadds Ford SD

Printed 11/28/2023 9:37:10 AM

Debt Details
Governmental Funds/ Activities

Debt Category	Debt Issue Date (MM/YYYY)	Principal Amounts Only				Current Portion Due Within One Year (Principal and Interest)	Interest Paid During Fiscal Year
		Debt at Beginning of Fiscal Year	Additions	Reductions / Repayments	Debt at End of Fiscal Year		
General Obligation Bonds/Notes – CIB	02/2022	11,385,000.00		80,000.00	11,305,000.00	859,400.00	518,093.33
General Obligation Bonds/Notes – CIB	02/2022	2,445,000.00		1,505,000.00	940,000.00	493,300.00	87,119.86
General Obligation Bonds/Notes – CIB	05/2019	6,940,000.00		530,000.00	6,410,000.00	786,975.00	258,175.00
General Obligation Bonds/Notes – CIB	09/2016	54,645,000.00		3,660,000.00	50,985,000.00	7,162,450.00	2,405,650.00
Leases and Other Right to Use Arrangements		174,956.00		88,659.00	86,297.00	88,308.40	7,441.21
Compensated Absences		3,763,004.00	121,872.00	14,277.00	3,870,599.00	37,622.00	
Other Post-Employment Benefits (OPEB)		3,458,781.00	384,549.00	607,933.00	3,235,397.00		
Net Pension Liability		116,772,360.00	10,232,437.00		127,004,797.00		
Totals for Debt Entered:		\$199,584,101.00	\$10,738,858.00	\$6,485,869.00	\$203,837,090.00	\$9,428,055.40	\$3,276,479.40

Bond Details
Proprietary Funds

Debt Category	Debt Issue Date (MM/YYYY)	Principal Amounts Only				Current Portion Due Within One Year (Principal and Interest)	Interest Paid During Fiscal Year
		Debt at Beginning of Fiscal Year	Additions	Reductions / Repayments	Debt at End of Fiscal Year		
Net Pension Liability		1,635,249.00	67,954.00		1,703,203.00		
Totals for Debt Entered:		\$1,635,249.00	\$67,954.00		\$1,703,203.00		

LEA : 124158503 Unionville-Chadds Ford SD

General Fund (10)

Section 1: Tuition/Purchased Services as Reported within Expenditure Detail	Amount
Tuition Reported in General Fund Expenditures 1000-560	2,006,816.68
Purchased Services in General Fund Expenditures 1000-594 and 1000-597	
Section 1 Total	\$2,006,816.68

Section 2: Tuition Paid to Institution Types During Fiscal Year	Tuition Paid For Nonspecial Education	Tuition Paid For Special Education	Total
1 1306 Institutions			
2 Institutionalized Children's Programs			
3 Juveniles Incarcerated in Adult Facilities			
4 Residential Treatment Facilities			
5 Other Local Education Agencies	126,127.57	37,074.01	163,201.58
6 Brick and Mortar Charter Schools	34,155.29	37,497.18	71,652.47
7 Cyber Charter Schools	535,099.56	212,484.02	747,583.58
8 Career and Technology Centers	844,478.28		844,478.28
9 Approved Private Schools		57,746.21	57,746.21
10 PA Chartered Schools for the Deaf and Blind			
11 Private Residential Rehabilitative Institutions			
12 Juvenile Detention Centers	122,154.56		122,154.56
13 Special Program Jointures			
14 Other Tuition Not Included Elsewhere In This Section			
Section 2 Total	\$1,662,015.26	\$344,801.42	\$2,006,816.68

1 .	<u>Student Transportation Services for Educational Field Trips</u>	
2 .	<u>Student Transportation Services for Student Activities</u>	31,349.21
3 .	<u>Rental of Vehicles for Student Transportation Services</u>	
4 .	<u>Capital Reserve Funds</u>	

Include only district-owned transportation expenditures paid from State or local money.
DO NOT include federal expenditures or payments to contract service providers.
Contracted transportation services should not be recorded on this schedule.

LEA : 124158503 Unionville-Chadds Ford SD

Printed 11/28/2023 9:37:20 AM

Food Service / Cafeteria Operations Fund (51)

3000 Operation of Non-Instructional Services		<u>Total</u>
100 <u>Personnel Services – Salaries</u>		
100 Personnel Services – Salaries	643,858.39	
Total Personnel Services – Salaries		\$643,858.39
200 <u>Personnel Services – Employee Benefits</u>		
220 Social Security Contributions	49,255.17	
230 PSERS Retirement Contributions	80,268.48	
270 Group Insurance – Self-Insurance	171,816.42	
Total Personnel Services – Employee Benefits		\$301,340.07
600 <u>Supplies</u>		
610 General Supplies	1,033,857.77	
Total Supplies		\$1,033,857.77
700 <u>Property</u>		
740 Depreciation	59,947.87	
Total Property		\$59,947.87
Total 3000 Operation of Non-Instructional Services		\$2,039,004.10

LEA : 124158503 Unionville-Chadds Ford SD

Printed 11/28/2023 9:37:20 AM

Food Service / Cafeteria Operations Fund (51)

3100 Food Services	<u>Elementary</u>	<u>Secondary</u>	<u>Federal</u>	<u>Total</u>
100 <u>Personnel Services – Salaries</u>				
100 Personnel Services – Salaries				643,858.39
Total Personnel Services – Salaries				\$643,858.39
200 <u>Personnel Services – Employee Benefits</u>				
220 Social Security Contributions				49,255.17
230 PSERS Retirement Contributions				80,268.48
270 Group Insurance – Self-Insurance				171,816.42
Total Personnel Services – Employee Benefits				\$301,340.07
600 <u>Supplies</u>				
610 General Supplies				1,033,857.77
Total Supplies				\$1,033,857.77
700 <u>Property</u>				
740 Depreciation				59,947.87
Total Property				\$59,947.87
Total 3100 Food Services				\$2,039,004.10

LEA : 124158503 Unionville-Chadds Ford SD

Printed 11/28/2023 9:37:18 AM

Internal Service Fund (60)

2000 Support Services

Total

200 <u>Personnel Services – Employee Benefits</u>	
270 Group Insurance – Self-Insurance	10,929,086.00
Total Personnel Services – Employee Benefits	\$10,929,086.00
300 <u>Purchased Professional and Technical Services</u>	
330 Other Professional Services	8,064.00
Total Purchased Professional and Technical Services	\$8,064.00
Total 2000 Support Services	\$10,937,150.00

LEA : 124158503 Unionville-Chadds Ford SD

Printed 11/28/2023 9:37:18 AM

Internal Service Fund (60)

2800 Support Services – Central

Elementary Secondary Federal Total

200 <u>Personnel Services – Employee Benefits</u>				
270 Group Insurance – Self-Insurance				10,929,086.00
Total Personnel Services – Employee Benefits				\$10,929,086.00
300 <u>Purchased Professional and Technical Services</u>				
330 Other Professional Services				8,064.00
Total Purchased Professional and Technical Services				\$8,064.00
Total 2800 Support Services – Central				\$10,937,150.00

LEA : 124158503 Unionville-Chadds Ford SD

Printed 11/28/2023 9:37:18 AM

Internal Service Fund (60)

2830 Staff Services

Elementary Secondary Federal Total

200 <u>Personnel Services – Employee Benefits</u>				
270 Group Insurance – Self-Insurance				10,929,086.00
Total Personnel Services – Employee Benefits				\$10,929,086.00
300 <u>Purchased Professional and Technical Services</u>				
330 Other Professional Services				8,064.00
Total Purchased Professional and Technical Services				\$8,064.00
Total 2830 Staff Services				\$10,937,150.00

LEA : 124158503 Unionville-Chadds Ford SD

Printed 11/28/2023 9:37:18 AM

Internal Service Fund (60)

2835 Health Services	<u>Elementary</u>	<u>Secondary</u>	<u>Federal</u>	<u>Total</u>
200 <u>Personnel Services – Employee Benefits</u>				
270 Group Insurance – Self-Insurance				10,929,086.00
Total Personnel Services – Employee Benefits				\$10,929,086.00
300 <u>Purchased Professional and Technical Services</u>				
330 Other Professional Services				8,064.00
Total Purchased Professional and Technical Services				\$8,064.00
Total 2835 Health Services				\$10,937,150.00

	<u>Food Service(51)</u>	<u>Child Care Operations(52)</u>	<u>Other Enterprise(58)</u>	<u>Internal Service(60)</u>	<u>Total</u>
2000 <u>Support Services</u>					
2800 Support Services - Central				10,937,150.00	10,937,150.00
Total Support Services				\$10,937,150.00	\$10,937,150.00
3000 <u>Operation of Non-Instructional Services</u>					
3100 Food Services	2,039,004.10				2,039,004.10
Total Operation of Non-Instructional Services	\$2,039,004.10				\$2,039,004.10
TOTAL ACTUAL EXPENDITURES & OTHER FINANCING USES	\$2,039,004.10			\$10,937,150.00	\$12,976,154.10

LEA : 124158503 Unionville-Chadds Ford SD

Printed 11/28/2023 9:37:28 AM

Fund	School	School Number	Local Personnel	Local Nonpersonnel	State Personnel	State Nonpersonnel	Federal Personnel	Federal Nonpersonnel	Total	Explanation
10										
	Chadds Ford El Sch	1441	7,717,724.21	716,859.46	1,810,330.37	168,152.22	196,636.09	15,141.43	10,624,843.78	
	Charles F Patton MS	6719	9,784,427.16	1,646,904.01	2,295,112.54	386,310.82	150,278.35	37,976.85	14,301,009.73	
	Hillendale El Sch	7214	8,640,960.17	729,852.28	2,026,891.89	171,199.92	82,330.05	33,838.74	11,685,073.05	
	Pocopson El Sch	7736	11,205,024.82	979,788.96	2,628,339.16	229,827.03	193,776.30	20,051.56	15,256,807.83	
	Unionville El Sch	1442	7,662,466.63	776,439.08	1,797,368.72	182,127.69	310,426.34	14,563.49	10,743,391.95	
	Unionville HS	1443	12,992,171.39	2,501,834.07	3,047,546.38	586,849.97	459,920.02	61,173.31	19,649,495.14	
Total			58,002,774.38	7,351,677.86	13,605,589.06	1,724,467.65	1,393,367.15	182,745.38	82,260,621.48	

	<u>Nonspecial Education</u>	<u>Special Education</u>
1000 <u>Instruction</u>		
1100 Regular Programs - Elementary / Secondary		16,446.00
Total Instruction		\$16,446.00
5000 <u>Other Expenditures and Financing Uses</u>		
5100 Debt Service / Other Expenditures and Financing Uses		1,318.00
Total Other Expenditures and Financing Uses		\$1,318.00
TOTAL ACTUAL EXPENDITURES & OTHER FINANCING USES		\$17,764.00

LEA : 124158503 Unionville-Chadds Ford SD

Printed 11/28/2023 9:37:32 AM

1000 Instruction

100 Personnel Services - Salaries

100 Personnel Services - Salaries

11,345.00

Total Personnel Services - Salaries

\$11,345.00

200 Personnel Services - Employee Benefits

220 Social Security Contributions

868.00

230 PSERS Retirement Contributions

122.00

250 Unemployment Compensation

1.00

260 Workers' Compensation

87.00

270 Group Insurance - Self-Insurance

1,175.00

Total Personnel Services - Employee Benefits

\$2,253.00

300 Purchased Professional and Technical Services

390 Other Purchased Professional and Technical Services

60.00

Total Purchased Professional and Technical Services

\$60.00

400 Purchased Property Services

490 Other Purchased Property Services

1,962.00

Total Purchased Property Services

\$1,962.00

500 Other Purchased Services

599 Other Miscellaneous Purchased Services

571.00

Total Other Purchased Services

\$571.00

600 Supplies

610 General Supplies

255.00

Total Supplies

\$255.00

Total 1000 Instruction

\$16,446.00

LEA : 124158503 Unionville-Chadds Ford SD

Printed 11/28/2023 9:37:32 AM

1100 Regular Programs - Elementary / Secondary

Nonspecial Education

Special Education

100 <u>Personnel Services - Salaries</u>	
100 Personnel Services - Salaries	11,345.00
Total Personnel Services - Salaries	\$11,345.00
200 <u>Personnel Services - Employee Benefits</u>	
220 Social Security Contributions	868.00
230 PSERS Retirement Contributions	122.00
250 Unemployment Compensation	1.00
260 Workers' Compensation	87.00
270 Group Insurance - Self-Insurance	1,175.00
Total Personnel Services - Employee Benefits	\$2,253.00
300 <u>Purchased Professional and Technical Services</u>	
390 Other Purchased Professional and Technical Services	60.00
Total Purchased Professional and Technical Services	\$60.00
400 <u>Purchased Property Services</u>	
490 Other Purchased Property Services	1,962.00
Total Purchased Property Services	\$1,962.00
500 <u>Other Purchased Services</u>	
599 Other Miscellaneous Purchased Services	571.00
Total Other Purchased Services	\$571.00
600 <u>Supplies</u>	
610 General Supplies	255.00
Total Supplies	\$255.00
Total 1100 Regular Programs - Elementary / Secondary	\$16,446.00

LEA : 124158503 Unionville-Chadds Ford SD

Printed 11/28/2023 9:37:32 AM

1110 Regular Programs	<u>Nonspecial Education</u>	<u>Special Education</u>
100 <u>Personnel Services - Salaries</u>		
100 Personnel Services - Salaries		11,345.00
Total Personnel Services - Salaries		\$11,345.00
200 <u>Personnel Services - Employee Benefits</u>		
220 Social Security Contributions		868.00
230 PSERS Retirement Contributions		122.00
250 Unemployment Compensation		1.00
260 Workers' Compensation		87.00
270 Group Insurance - Self-Insurance		1,175.00
Total Personnel Services - Employee Benefits		\$2,253.00
300 <u>Purchased Professional and Technical Services</u>		
390 Other Purchased Professional and Technical Services		60.00
Total Purchased Professional and Technical Services		\$60.00
400 <u>Purchased Property Services</u>		
490 Other Purchased Property Services		1,962.00
Total Purchased Property Services		\$1,962.00
500 <u>Other Purchased Services</u>		
599 Other Miscellaneous Purchased Services		571.00
Total Other Purchased Services		\$571.00
600 <u>Supplies</u>		
610 General Supplies		255.00
Total Supplies		\$255.00
Total 1110 Regular Programs		\$16,446.00

LEA : 124158503 Unionville-Chadds Ford SD

Printed 11/28/2023 9:37:32 AM

5000 Other Expenditures and Financing Uses

900 <u>Other Uses of Funds</u>	
990 Miscellaneous Other Uses of Funds	1,318.00
Total Other Uses of Funds	\$1,318.00
Total 5000 Other Expenditures and Financing Uses	\$1,318.00

LEA : 124158503 Unionville-Chadds Ford SD

Printed 11/28/2023 9:37:32 AM

5100 Debt Service / Other Expenditures and Financing Uses	<u>Nonspecial Education</u>	<u>Special Education</u>
900 <u>Other Uses of Funds</u>		
990 Miscellaneous Other Uses of Funds		1,318.00
Total Other Uses of Funds		\$1,318.00
Total 5100 Debt Service / Other Expenditures and Financing Uses		\$1,318.00

LEA : 124158503 Unionville-Chadds Ford SD

Printed 11/28/2023 9:37:32 AM

5110 Debt Service	<u>Nonspecial Education</u>	<u>Special Education</u>
900 <u>Other Uses of Funds</u>		
990 Miscellaneous Other Uses of Funds		1,318.00
Total Other Uses of Funds		\$1,318.00
Total 5110 Debt Service		\$1,318.00

	<u>Nonspecial Education</u>	<u>Special Education</u>
7000 Revenue from State Sources		
Total Revenue from State Sources	\$0	\$495
Total	\$0	\$495
TOTAL REVENUES	\$0	\$495

LEA : 124158503 Unionville-Chadds Ford SD

Printed 11/28/2023 9:37:35 AM

	<u>Nonspecial Education</u>	<u>Special Education</u>
7000 Revenue from State Sources		
7810 State Share of Social Security and Medicare Taxes	0	434
7820 State Share of Retirement Contributions	0	61
Total Revenue from State Sources	\$0	\$495
TOTAL	\$0	\$495
TOTAL REVENUES	\$0	\$495