

LEA Name : Unionville-Chadds Ford SD  
Address : 740 Unionville Road  
Kennett Square , PA 19348

County : Chester  
AUN Number : 124158503  
LEA Type : SD

## Annual Financial Report Accuracy Certification Statement

For Fiscal Year Ending  
**6/30/2022**

Pennsylvania Department of Education  
&  
Office of Comptroller Operations

PDE-2056: Intermediate Unit  
PDE-2057: School District, AVTS/CTC, Charter School,  
and Special Program Jointure

**CERTIFICATION: By signing this page I agree that the electronic data submitted is a complete and accurate statement of the financial operations and status of the local education agency for the fiscal year. It has been prepared in accordance with generally accepted accounting principles and established Commonwealth of PA reporting guidelines.**



Chief School Administrator Signature

2/14/2023

Date



Board Secretary Signature

2/14/2023

Date

Joseph Deady

Contact Person

(610)347-0970

Ext :3319

Contact Person Telephone Number

jdeady@ucfsd.net

Contact Person E-mail Address

(610)347-0976

Contact Person Fax Number

# Audit Certification

## Annual Financial Report:

For Fiscal Year Ending 6/30/2022

(Pursuant to PA School Code Section 218(b))

LEA Name : Unionville-Chadds Ford SD

AUN Number : 124158503

County : Chester

Audit Certification Due:  
12/31/2022

This certification is applicable to the Annual Financial Report data submitted through the Consolidated Financial Reporting System (CFRS).

CERTIFICATION: By signing this page I agree that the financial statements of the school have been properly audited as noted above pursuant to Article XXIV, and in the auditor's professional opinion, the Annual Financial Report (PDE-2057) submitted through CFRS is materially consistent with the audited financial statements.

Chief School Administrator

Joe Sailer  
Signature

11.23.22  
Date

Board Secretary

Linda A. Miller  
Signature

11/23/2022  
Date

Joseph Deady

Contact Person

(610)347-0970

Contact Person Telephone Number

Ext :3319

jdeady@ucfsd.net

Contact Person E-mail Address

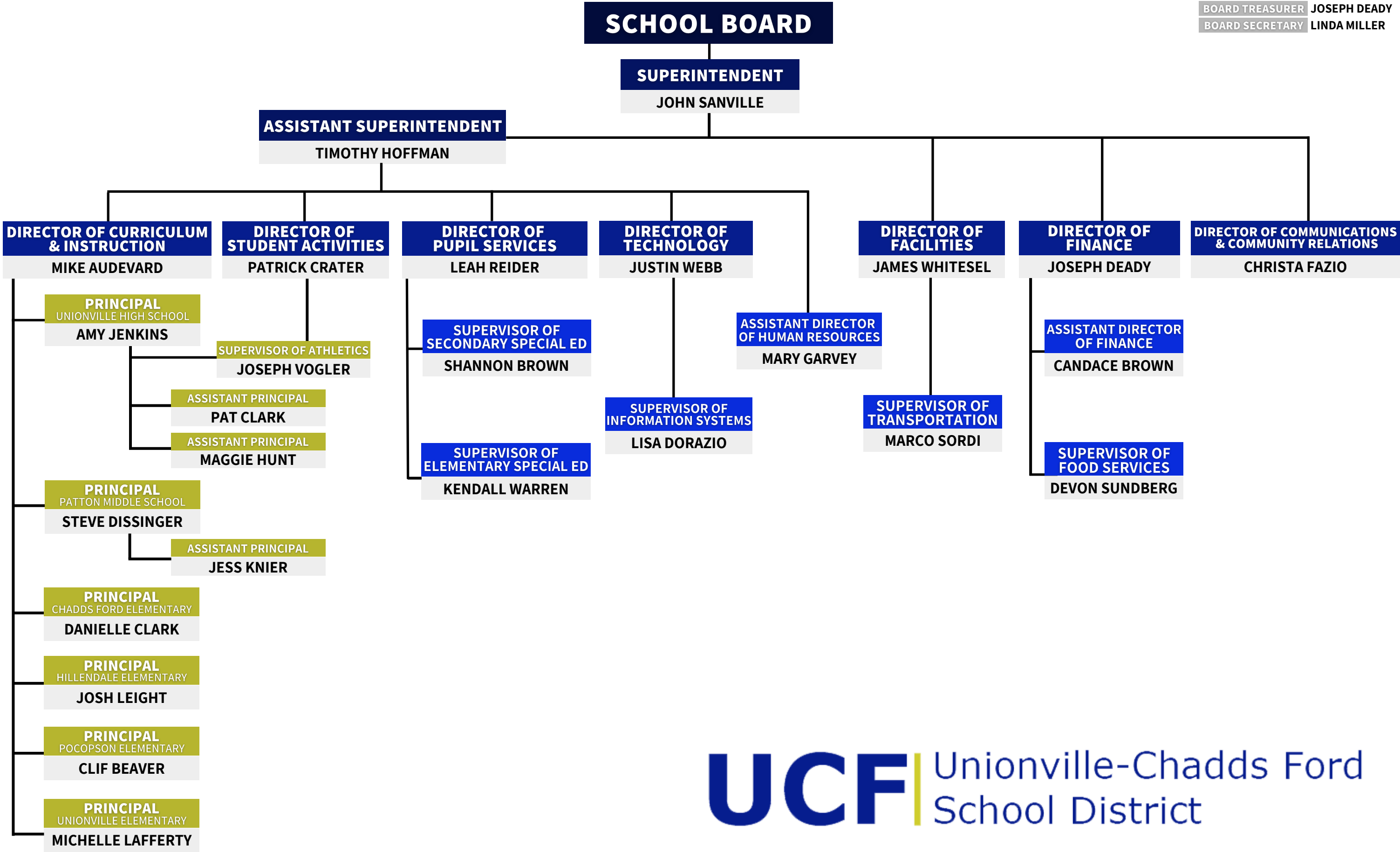
(610)347-0976

Contact Person Fax Number

ORGANIZATIONAL CHART OF

# UNIONVILLE-CHADDS FORD SCHOOL DISTRICT

BOARD TREASURER JOSEPH DEADY  
BOARD SECRETARY LINDA MILLER





Book	Policy Manual
Section	600 Finances
Title	GASB Statement 34
Code	622
Status	Active
Adopted	January 20, 2015

### **Purpose**

The Board recognizes the need to implement the required accounting and financial reporting standards stipulated by the Pennsylvania Department of Education.

The primary objectives of implementing the Governmental Accounting Standards Board (GASB) Statement 34 are to assure compliance with state requirements, and properly account for both the financial and economic resources of the district.

### **Authority**

Participation of the school district in any such activity shall be in accordance with Board policy.[\[1\]](#)[\[2\]](#)

### **Delegation of Responsibility**

The responsibility to coordinate the compilation and preparation of all information necessary to implement this policy is delegated to the Director of Business and Operations.

The designated individual shall be responsible for implementing the necessary procedures to establish and maintain a fixed asset inventory, including depreciation schedules. Depreciation shall be computed on a straight-line basis over the useful lives of the assets, using an averaging convention. Normal maintenance and repairs shall be charged to expense as incurred; major renewals and betterments that materially extend the life or increase the value of the asset shall be capitalized. A schedule of accumulated depreciation shall be consistent from year to year. The basis for depreciation, including groups of assets and useful lives, shall be in writing and submitted for review to the Board.

The Director of Business and Operations shall prepare the required Management Discussion and Analysis (MD&A). The MD&A shall be in the form required by GASB Statement 34 and shall be submitted to the Board for approval, prior to publication.

Prior to submission of the MD&A for Board approval, the district's independent auditors shall review the MD&A, in accordance with SAS No. 52, "Required Supplementary Information".

Legal	1. 24 P.S. 218
	2. 24 P.S. 613
	Governmental Accounting Standards Board, Statement No. 34



<u>Val Number</u>	<u>Description</u>	<u>Justification</u>
30410	Revenue Detail: AFR amount must equal or exceed PDE FAI System amount.  6944, AFR Rev Detail: \$215,174.79 6944, PDE FAI System: \$329,100.64	Revenue was received that was accrued to prior year.
30685	Revenue Detail: Current Tax Revenue amount cannot exceed 50% variance from prior year amount. Correct the data or enter a justification.  6153, Current AFR Rev Detail: \$2,532,002.53 6153, Prior AFR Rev Detail: \$1,493,978.50	Real estate transfer tax revenue collection was extremely strong during the 2021/2022 school year. Revenue data entered is correct.
42330	Expenditure Detail: AFR amount must equal or exceed PDE FAI System amount.  1000-562, AFR Exp Detail: \$677,179.44 1000-562, PDE FAI System: \$691,915.67	We received reconciliation refunds from 20-21 school year of \$14,736.23 during the 2021/2022 school year.
50160	SOIN: All Governmental Fund General Obligation Bonds must include an amount for Interest Paid during Fiscal Year. Correct data or enter a justification.	Two bonds were issued in 2022. Their payments start 12/1/22.
50280	SOIN: Current Year AFR amount must equal Prior Year AFR amount.  SOIN, Beg Bal, Gen Obl Bnds: \$70,270,000.00 PY Ending Bal, Gen Obl Bnds: \$70,360,000.00	A debt issue balance was incorrect by \$90,000 on the 2018/2019 AFR. The bond was paid in full in the 2021/2022 fiscal year.

Amounts Expressed in Whole Dollars		<u>General Fund</u> <u>(10)</u>	<u>Student Sponsored</u> <u>Activity Fund</u> <u>(21)</u>	<u>Public Purpose Trust</u> <u>(27)</u>	<u>Other Compt Approved</u> <u>(28)</u>	<u>Athletic / Activity</u> <u>(29)</u>
<b>Assets And Deferred Outflows Of Resources</b>						
<b>Assets</b>						
0100	Cash and Cash Equivalents	13,377,961				
0110	Investments	2,985,000				
0120	Taxes Receivable	1,059,210				
0130	Due From Other Funds	1,200,000				
0141	Due From Other Governments	4,858,440				
0142	State Revenue Receivable					
0143	Federal Revenue Receivable					
0145	Other Intergovernmental Revenue Receivable					
0146	Due from Primary Government					
0147	Due from Component Unit					
0150	Other Receivables					
0170	Inventories					
0180	Prepaid Expenses (Expenditures)	5,299				
0190	Other Current Assets					
<b>Total Assets</b>		<b>\$23,485,910</b>				
0910	Deferred Outflows of Resources					
<b>Total Assets And Deferred Outflows Of Resources</b>		<b>\$23,485,910</b>				

LEA : 124158503      Unionville-Chadds Ford SD

Printed 2/14/2023 9:28:11 AM

Amounts Expressed in Whole Dollars		<u>Capital Reserve (690.</u> <u>1850)</u> <u>(31)</u>	<u>Capital Reserve (1431)</u> <u>(32)</u>	<u>Other Capital Projects</u> <u>Fund</u> <u>(39)</u>	<u>Debt Service</u> <u>(40)</u>	<u>Permanent</u> <u>(90)</u>
<b>Assets And Deferred Outflows Of Resources</b>						
<b>Assets</b>						
0100	Cash and Cash Equivalents		297,432	11,953,600		
0110	Investments					
0120	Taxes Receivable					
0130	Due From Other Funds			57,300		
0141	Due From Other Governments					
0142	State Revenue Receivable					
0143	Federal Revenue Receivable					
0145	Other Intergovernmental Revenue Receivable					
0146	Due from Primary Government					
0147	Due from Component Unit					
0150	Other Receivables					
0170	Inventories					
0180	Prepaid Expenses (Expenditures)					
0190	Other Current Assets					
<b>Total Assets</b>			<b>\$297,432</b>	<b>\$12,010,900</b>		
0910	Deferred Outflows of Resources					
<b>Total Assets And Deferred Outflows Of Resources</b>			<b>\$297,432</b>	<b>\$12,010,900</b>		



LEA : 124158503      Unionville-Chadds Ford SD

Printed 2/14/2023 9:28:11 AM

Amounts Expressed in Whole Dollars		<u>Total Governmental</u> <u>Funds</u>
<b>Assets And Deferred Outflows Of Resources</b>		
<b>Assets</b>		
0100 Cash and Cash Equivalents		25,628,993
0110 Investments		2,985,000
0120 Taxes Receivable		1,059,210
0130 Due From Other Funds		1,257,300
0141 Due From Other Governments		4,858,440
0142 State Revenue Receivable		
0143 Federal Revenue Receivable		
0145 Other Intergovernmental Revenue Receivable		
0146 Due from Primary Government		
0147 Due from Component Unit		
0150 Other Receivables		
0170 Inventories		
0180 Prepaid Expenses (Expenditures)		5,299
0190 Other Current Assets		
<b>Total Assets</b>		<b>\$35,794,242</b>
0910 Deferred Outflows of Resources		
<b>Total Assets And Deferred Outflows Of Resources</b>		<b>\$35,794,242</b>

Amounts Expressed in Whole Dollars		<u>General Fund</u> <u>(10)</u>	<u>Student Sponsored</u> <u>Activity Fund</u> <u>(21)</u>	<u>Public Purpose Trust</u> <u>(27)</u>	<u>Other Compt Approved</u> <u>(28)</u>	<u>Athletic / Activity</u> <u>(29)</u>
<b>Liabilities And Deferred Inflows Of Resources And Fund Balances</b>						
<b>Liabilities</b>						
0400	Due to Other Funds	992,092				
0411	Due to Other Governments					
0412	Due to Primary Government					
0413	Due to Component Unit					
0420	Accounts Payable	1,533,799				
0430	Contracts Payable					
0440	Current Portion of Long-Term Debt					
0450	Short-Term Payables					
0461	Accrued Salaries and Benefits	11,441,377				
0462	Payroll Deductions and Withholding					
0480	Unearned Revenues	660,238				
0490	Other Current Liabilities					
<b>Total Liabilities</b>		<b>\$14,627,506</b>				
0950	Deferred Inflows of Resources					
<b>Fund Balances</b>						
0810	Nonspendable Fund Balance	5,299				
0820	Restricted Fund Balance					
0830	Committed Fund Balance	3,754,674				
0840	Assigned Fund Balance					
0850	Unassigned Fund Balance	5,098,431				
<b>Total Fund Balances</b>		<b>\$8,858,404</b>				
<b>Total Liabilities, Deferred Inflows Of Resources And Fund Balances</b>		<b>\$23,485,910</b>				

LEA : 124158503      Unionville-Chadds Ford SD

Printed 2/14/2023 9:28:11 AM

Amounts Expressed in Whole Dollars		<u>Capital Reserve (690.</u> <u>1850)</u> <u>(31)</u>	<u>Capital Reserve (1431)</u> <u>(32)</u>	<u>Other Capital Projects</u> <u>Fund</u> <u>(39)</u>	<u>Debt Service</u> <u>(40)</u>	<u>Permanent</u> <u>(90)</u>
<b>Liabilities And Deferred Inflows Of Resources And Fund Balances</b>						
<b>Liabilities</b>						
0400	Due to Other Funds					
0411	Due to Other Governments					
0412	Due to Primary Government					
0413	Due to Component Unit					
0420	Accounts Payable		2,152	562,685		
0430	Contracts Payable					
0440	Current Portion of Long-Term Debt					
0450	Short-Term Payables					
0461	Accrued Salaries and Benefits					
0462	Payroll Deductions and Withholding					
0480	Unearned Revenues					
0490	Other Current Liabilities					
<b>Total Liabilities</b>			<b>\$2,152</b>	<b>\$562,685</b>		
0950	Deferred Inflows of Resources					
<b>Fund Balances</b>						
0810	Nonspendable Fund Balance					
0820	Restricted Fund Balance		295,280	11,448,215		
0830	Committed Fund Balance					
0840	Assigned Fund Balance					
0850	Unassigned Fund Balance					
<b>Total Fund Balances</b>			<b>\$295,280</b>	<b>\$11,448,215</b>		
<b>Total Liabilities, Deferred Inflows Of Resources And Fund Balances</b>			<b>\$297,432</b>	<b>\$12,010,900</b>		

Amounts Expressed in Whole Dollars		<u>Total Governmental Funds</u>
<b>Liabilities And Deferred Inflows Of Resources And Fund Balances</b>		
<b>Liabilities</b>		
0400 Due to Other Funds		992,092
0411 Due to Other Governments		
0412 Due to Primary Government		
0413 Due to Component Unit		
0420 Accounts Payable		2,098,636
0430 Contracts Payable		
0440 Current Portion of Long-Term Debt		
0450 Short-Term Payables		
0461 Accrued Salaries and Benefits		11,441,377
0462 Payroll Deductions and Withholding		
0480 Unearned Revenues		660,238
0490 Other Current Liabilities		
<b>Total Liabilities</b>		<b>\$15,192,343</b>
0950 Deferred Inflows of Resources		
<b>Fund Balances</b>		
0810 Nonspendable Fund Balance		5,299
0820 Restricted Fund Balance		11,743,495
0830 Committed Fund Balance		3,754,674
0840 Assigned Fund Balance		
0850 Unassigned Fund Balance		5,098,431
<b>Total Fund Balances</b>		<b>\$20,601,899</b>
<b>Total Liabilities, Deferred Inflows Of Resources And Fund Balances</b>		<b>\$35,794,242</b>

Amounts Expressed in Whole Dollars	<u>General Fund</u> <u>(10)</u>	<u>Student Sponsored</u> <u>Activity Fund</u> <u>(21)</u>	<u>Public Purpose Trust</u> <u>(27)</u>	<u>Other Compt Approved</u> <u>(28)</u>	<u>Athletic / Activity</u> <u>(29)</u>
<b>Revenues</b>					
6000 Revenue from Local Sources	75,625,539				
7000 Revenue from State Sources	16,835,619				
8000 Revenue from Federal Sources	1,057,018				
<b>Total Revenues</b>	<b>\$93,518,176</b>				
<b>Expenditures</b>					
1000 Instruction	53,435,268				
2000 Support Services	29,292,897				
3000 Operation of Non-Instructional Services	1,826,809				
4000 Facilities Acquisition, Construction and Improvement Services					
5110 Debt Service	8,369,069				
5130 Refund of Prior Year Revenues / Receipts					
5140 Leases	83,928				
<b>Total Expenditures</b>	<b>\$93,007,971</b>				
<b>Excess (Deficiency) Of Revenues Over Expenditures</b>	<b>\$510,205</b>				
<b>Other Financing Sources (Uses)</b>					
9110 Face Value of Bonds Issued					
9120 Proceeds from Refunding of Bonds					
9130 Bond Premiums					
9200 Proceeds from Extended-Term Financing and Leases					
9300 Interfund Transfers - IN					
9400 Sale of or Compensation for Loss of Fixed Assets	3,626				
9710 Transfers from Component Units					
9720 Transfers from Primary Governments					
9910 Other Financing Sources Not Listed in the 9000 Series					
9990 Insurance Recoveries					
5120 Debt Service – Refunded Bonds					
5150 Bond Discounts					
5200 Interfund Transfers – Out	764,467				
5300 Transfers Out to Component Units/Primary Governments					
<b>Total Other Financing Sources (Uses)</b>	<b>(\$760,841)</b>				

Amounts Expressed in Whole Dollars		<u>Capital Reserve (690.1850)</u> <u>(31)</u>	<u>Capital Reserve (1431)</u> <u>(32)</u>	<u>Other Capital Projects</u> <u>Fund</u> <u>(39)</u>	<u>Debt Service</u> <u>(40)</u>	<u>Permanent</u> <u>(90)</u>
<b>Revenues</b>						
6000	Revenue from Local Sources		891	24,794		
7000	Revenue from State Sources					
8000	Revenue from Federal Sources					
<b>Total Revenues</b>			<b>\$891</b>	<b>\$24,794</b>		
<b>Expenditures</b>						
1000	Instruction					
2000	Support Services			200,282		
3000	Operation of Non-Instructional Services					
4000	Facilities Acquisition, Construction and Improvement Services		2,139,963	1,079,916		
5110	Debt Service					
5130	Refund of Prior Year Revenues / Receipts					
5140	Leases					
<b>Total Expenditures</b>			<b>\$2,139,963</b>	<b>\$1,280,198</b>		
<b>Excess (Deficiency) Of Revenues Over Expenditures</b>			<b>(\$2,139,072)</b>	<b>(\$1,255,404)</b>		
<b>Other Financing Sources (Uses)</b>						
9110	Face Value of Bonds Issued			11,385,000		
9120	Proceeds from Refunding of Bonds			2,445,000		
9130	Bond Premiums			1,377,670		
9200	Proceeds from Extended-Term Financing and Leases					
9300	Interfund Transfers - IN		764,467			
9400	Sale of or Compensation for Loss of Fixed Assets					
9710	Transfers from Component Units					
9720	Transfers from Primary Governments					
9910	Other Financing Sources Not Listed in the 9000 Series					
9990	Insurance Recoveries					
5120	Debt Service – Refunded Bonds			2,506,069		
5150	Bond Discounts					
5200	Interfund Transfers – Out					
5300	Transfers Out to Component Units/Primary Governments					
<b>Total Other Financing Sources (Uses)</b>			<b>\$764,467</b>	<b>\$12,701,601</b>		

Amounts Expressed in Whole Dollars		<u>Total Governmental Funds</u>
<b>Revenues</b>		
6000	Revenue from Local Sources	75,651,224
7000	Revenue from State Sources	16,835,619
8000	Revenue from Federal Sources	1,057,018
<b>Total Revenues</b>		<b>\$93,543,861</b>
<b>Expenditures</b>		
1000	Instruction	53,435,268
2000	Support Services	29,493,179
3000	Operation of Non-Instructional Services	1,826,809
4000	Facilities Acquisition, Construction and Improvement Services	3,219,879
5110	Debt Service	8,369,069
5130	Refund of Prior Year Revenues / Receipts	
5140	Leases	83,928
<b>Total Expenditures</b>		<b>\$96,428,132</b>
<b>Excess (Deficiency) Of Revenues Over Expenditures</b>		<b>(\$2,884,271)</b>
<b>Other Financing Sources (Uses)</b>		
9110	Face Value of Bonds Issued	11,385,000
9120	Proceeds from Refunding of Bonds	2,445,000
9130	Bond Premiums	1,377,670
9200	Proceeds from Extended-Term Financing and Leases	
9300	Interfund Transfers - IN	764,467
9400	Sale of or Compensation for Loss of Fixed Assets	3,626
9710	Transfers from Component Units	
9720	Transfers from Primary Governments	
9910	Other Financing Sources Not Listed in the 9000 Series	
9990	Insurance Recoveries	
5120	Debt Service – Refunded Bonds	2,506,069
5150	Bond Discounts	
5200	Interfund Transfers – Out	764,467
5300	Transfers Out to Component Units/Primary Governments	
<b>Total Other Financing Sources (Uses)</b>		<b>\$12,705,227</b>

Amounts Expressed in Whole Dollars		<u>General Fund</u> <u>(10)</u>	<u>Student Sponsored</u> <u>Activity Fund</u> <u>(21)</u>	<u>Public Purpose Trust</u> <u>(27)</u>	<u>Other Compt Approved</u> <u>(28)</u>	<u>Athletic / Activity</u> <u>(29)</u>
<b>Special And Extraordinary Items</b>						
9920	Special Items – Gains					
9930	Extraordinary Items – Gains					
5520	Special Items – Losses					
5530	Extraordinary Items – Losses					
<b>Net Change In Fund Balances</b>		<b>(\$250,636)</b>				
<b>Fund Balance</b>						
0001	Fund Balance - Beginning of Fiscal Year	9,109,042				
<b>Fund Balance - End Of Year</b>		<b>\$8,858,406</b>				



Amounts Expressed in Whole Dollars		<u>Capital Reserve (690.</u> <u>1850)</u> <u>(31)</u>	<u>Capital Reserve (1431)</u> <u>(32)</u>	<u>Other Capital Projects</u> <u>Fund</u> <u>(39)</u>	<u>Debt Service</u> <u>(40)</u>	<u>Permanent</u> <u>(90)</u>
<b>Special And Extraordinary Items</b>						
9920	Special Items – Gains					
9930	Extraordinary Items – Gains					
5520	Special Items – Losses					
5530	Extraordinary Items – Losses					
<b>Net Change In Fund Balances</b>			<b>(\$1,374,605)</b>	<b>\$11,446,197</b>		
<b>Fund Balance</b>						
0001	Fund Balance - Beginning of Fiscal Year		1,669,884	2,018		
<b>Fund Balance - End Of Year</b>			<b>\$295,279</b>	<b>\$11,448,215</b>		

Amounts Expressed in Whole Dollars		<u>Total Governmental Funds</u>
<b>Special And Extraordinary Items</b>		
9920	Special Items – Gains	
9930	Extraordinary Items – Gains	
5520	Special Items – Losses	
5530	Extraordinary Items – Losses	
<b>Net Change In Fund Balances</b>		<b>\$9,820,956</b>
<b>Fund Balance</b>		
0001	Fund Balance - Beginning of Fiscal Year	10,780,944
<b>Fund Balance - End Of Year</b>		<b>\$20,601,900</b>

LEA : 124158503      Unionville-Chadds Ford SD

Printed 2/14/2023 9:28:18 AM

Amounts Expressed in Whole Dollars		<u>Food Service</u> <u>(51)</u>	<u>Child Care</u> <u>Operations</u> <u>(52)</u>	<u>Other Enterprise</u> <u>(58)</u>	<u>TOTAL</u>	<u>Internal Service</u> <u>(60)</u>
<b>Assets And Deferred Outflows Of Resources</b>						
<b>Current Assets</b>						
0100	Cash and Cash Equivalents	206,443			206,443	1,231,754
0110	Investments					3,000,000
0130	Due From Other Funds	158,259			158,259	776,533
0141	Due From Other Governments	135,297			135,297	
0142	State Revenue Receivable					
0143	Federal Revenue Receivable					
0146	Due from Primary Government					
0147	Due from Component Unit					
0150	Other Receivables					
0170	Inventories	16,563			16,563	
0180	Prepaid Expenses (Expenditures)					
0190	Other Current Assets					211,128
<b>Total Current Assets</b>		<b>\$516,562</b>			<b>\$516,562</b>	<b>\$5,219,415</b>
<b>Noncurrent Assets</b>						
0211	Land					
0212	Site Improvements (Net)					
0220	Buildings and Building Improvements (Net)					
0230	Machinery, Equipment and Furniture (Net)	225,027			225,027	
0250	Construction in Progress					
0260	Long Term Prepayments					
0290	Other Noncurrent Assets					
<b>Total Noncurrent Assets</b>		<b>\$225,027</b>			<b>\$225,027</b>	
0910	Deferred Outflows of Resources	329,596			329,596	
<b>Total Assets And Deferred Outflows Of Resources</b>		<b>\$1,071,185</b>			<b>\$1,071,185</b>	<b>\$5,219,415</b>

Amounts Expressed in Whole Dollars	<u>Food Service</u> <u>(51)</u>	<u>Child Care</u> <u>Operations</u> <u>(52)</u>	<u>Other Enterprise</u> <u>(58)</u>	<u>TOTAL</u>	<u>Internal Service</u> <u>(60)</u>
<b>Liabilities And Deferred Inflows Of Resources And Net Position</b>					
<b>Current Liabilities</b>					
0400 Due to Other Funds					1,200,000
0411 Due to Other Governments					
0413 Due to Component Unit					
0420 Accounts Payable					
0430 Contracts Payable					
0440 Current Portion of Long-Term Debt					
0450 Short-Term Payables					
0461 Accrued Salaries and Benefits					776,533
0462 Payroll Deductions and Withholding					
0480 Unearned Revenues	81,930			81,930	
0490 Other Current Liabilities					
<b>Total Current Liabilities</b>	<b>\$81,930</b>			<b>\$81,930</b>	<b>\$1,976,533</b>
<b>Noncurrent Liabilities</b>					
0510 Bonds Payable					
0520 Extended-Term Financing Agreements Payable					
0530 Lease Obligations					
0540 Accumulated Compensated Absences					
0550 Authority Lease Obligations					
0560 Other Post-Employment Benefits (OPEB)	144,707			144,707	
0570 Net Pension Liability	1,635,249			1,635,249	
0599 Other Noncurrent Liabilities					
<b>Total Noncurrent Liabilities</b>	<b>\$1,779,956</b>			<b>\$1,779,956</b>	
<b>Total Liabilities</b>	<b>\$1,861,886</b>			<b>\$1,861,886</b>	<b>\$1,976,533</b>
0950 Deferred Inflows of Resources	321,203			321,203	
<b>Net Position</b>					
0791 Net Investment in Capital Assets	225,027			225,027	
0008 Restricted Net Position (0792 – 0798)					
0799 Unrestricted Net Position	(1,336,931)			(1,336,931)	3,242,882
<b>Total Net Position</b>	<b>(\$1,111,904)</b>			<b>(\$1,111,904)</b>	<b>\$3,242,882</b>
<b>Total Liabilities And Deferred Inflows Of Resources And Net Position</b>	<b>\$1,071,185</b>			<b>\$1,071,185</b>	<b>\$5,219,415</b>

Amounts Expressed in Whole Dollars	<u>Food Service</u> <u>(51)</u>	<u>Child Care Operations</u> <u>(52)</u>	<u>Other Enterprise</u> <u>(58)</u>	<u>TOTAL</u>	<u>Internal Service</u> <u>(60)</u>
<b>Operating Revenues</b>					
6600 Food Service Revenue	158,193			158,193	
0071 Charges for Services					8,294,033
0072 Other Operating Revenue					
<b>Total Operating Revenues</b>	<b>\$158,193</b>			<b>\$158,193</b>	<b>\$8,294,033</b>
<b>Operating Expenses</b>					
100 Personnel Services – Salaries	594,154			594,154	
200 Personnel Services – Employee Benefits	1,307,658			1,307,658	9,485,887
300 Purchased Professional and Technical Services					8,146
400 Purchased Property Services					
500 Other Purchased Services					
600 Supplies	851,233			851,233	
740 Depreciation	71,898			71,898	
810 Dues and Fees					
880 Refunds of Prior Years' Receipts					
890 Miscellaneous Expenditures					
<b>Total Operating Expenses</b>	<b>\$2,824,943</b>			<b>\$2,824,943</b>	<b>\$9,494,033</b>
<b>Operating Income (Loss)</b>	<b>(\$2,666,750)</b>			<b>(\$2,666,750)</b>	<b>(\$1,200,000)</b>
<b>Non Operating Revenues (Expenses)</b>					
6500 Earnings on Investments	20			20	2,112
6920 Contributions and Donations from Private Sources	3,861			3,861	
6930 Gains or Losses on Sale of Fixed Assets					
6991 Refunds of a Prior Year Expenditure					
7000 Revenue from State Sources	174,106			174,106	
8000 Revenue from Federal Sources	1,870,949			1,870,949	
9990 Insurance Recoveries					
820 Claims and Judgments Against the LEA					
830 Interest					
<b>TOTAL Non Operating Revenues (Expenses)</b>	<b>\$2,048,936</b>			<b>\$2,048,936</b>	<b>\$2,112</b>
<b>Income (Loss) Before Contributions And Transfers</b>	<b>(\$617,814)</b>			<b>(\$617,814)</b>	<b>(\$1,197,888)</b>

Amounts Expressed in Whole Dollars	<u>Food Service</u> <u>(51)</u>	<u>Child Care Operations</u> <u>(52)</u>	<u>Other Enterprise</u> <u>(58)</u>	<u>TOTAL</u>	<u>Internal Service</u> <u>(60)</u>
<b>Contributions, Transfers, and Special and Extraordinary Items</b>					
5200 Interfund Transfers – Out					
5300 Transfers Out to Component Units/Primary Governments					
5520 Special Items – Losses					
5530 Extraordinary Items – Losses					
9300 Interfund Transfers - IN					
9500 Capital Contributions					
9700 Transfers IN From Component Units/Primary Governments					
9920 Special Items – Gains					
9930 Extraordinary Items – Gains					
<b>Change In Net Position</b>	<b>(\$617,814)</b>			<b>(\$617,814)</b>	<b>(\$1,197,888)</b>
0002 Net Position - Beginning of Fiscal Year	(494,092)			(494,092)	4,440,770
0003 Accounting Changes / Residual Equity Transfers					
<b>Net Position - End Of Year</b>	<b>(\$1,111,906)</b>			<b>(\$1,111,906)</b>	<b>\$3,242,882</b>

LEA : 124158503      Unionville-Chadds Ford SD

Printed 2/14/2023 9:28:24 AM

Amounts Expressed in Whole Dollars		<u>Food Service</u> <u>(51)</u>	<u>Child Care Operations</u> <u>(52)</u>	<u>Other Enterprise</u> <u>(58)</u>	<u>TOTAL</u>	<u>Internal Service(60)</u>
<b>Cash Flows From Operating Activities</b>						
0011	Cash Receipts From Users	137,012			137,012	
0012	Cash Receipts From Assessments Made to Other Funds					9,205,603
0013	Cash Receipts From Earnings on Investments					
0014	Cash Receipts From Other Operating Revenue					
0015	Cash Payments To Employees For Services	1,443,994			1,443,994	
0016	Cash Payments For Insurance Claims					9,197,457
0017	Cash Payments To Suppliers For Goods and Services	755,197			755,197	
0018	Cash Payments For Other Operating Expenses					8,146
<b>Net Cash Provided By (Used For) Operating Activities</b>		<b>(\$2,062,179)</b>			<b>(\$2,062,179)</b>	<b>\$0</b>
<b>Cash Flows From Non-Capital Financing Activities</b>						
0021	Receipts From Local Sources - 6000	3,861			3,861	
0022	Receipts From State Sources - 7000	180,765			180,765	
0023	Receipts From Federal Sources -8000	1,868,099			1,868,099	
0024	Notes and Loans Received (Repaid)					
0025	Interest Paid on Notes/Loans - 5100-830					
0026	Operating Transfers In (Out)/Residual Equity Trans					
0027	Operating Transfers In (Out) Primary Government / Comp Unit					
0028	Receipts From Refund of Prior Year Expenditures - 6991					
0029	Special and Extraordinary Gains (losses)					
0030	Receipts from Insurance Recoveries -9990					
<b>Net Cash Prov By (Used for) Non-Capital Financing Activities</b>		<b>\$2,052,725</b>			<b>\$2,052,725</b>	
<b>Cash Flows From Capital and Related Financing Activities</b>						
0031	Payments For Fac Acq, Const, and Imp - 4000					
0032	Gain / (Loss) on Sale of Fixed Assets - 6930					
0033	Proceeds From Extended Term Financing - 9200					
0034	Principal Paid on Financing Agreements					
0035	Interest Paid on Financing Agreements - 5100-830					
0036	(Inc) Dec in Contributed Capital					
<b>Net Cash Prov By (Used for) Capital and Related Financing Activities</b>						
<b>Cash Flows From Investing Activities</b>						
0041	Earnings on Investments - 6500	20			20	2,112
0042	Purchase of Inv Securities / Deposits to Inv Pools					
0043	Receipts From Investment Pool Withdrawals					
0044	Proceeds from Sale and Maturity of Inv Securities					(3,000,000)

LEA : 124158503      Unionville-Chadds Ford SD

Printed 2/14/2023 9:28:24 AM

0045 Loans Received (Paid)			
Net Cash Prov By (Used for) Investing Activities	\$20	\$20	(\$2,997,888)



LEA : 124158503      Unionville-Chadds Ford SD

Printed 2/14/2023 9:28:24 AM

	<u>Food Service</u> <u>(51)</u>	<u>Child Care Operations</u> <u>(52)</u>	<u>Other Enterprise</u> <u>(58)</u>	<u>TOTAL</u>	<u>Internal Service</u> <u>(60)</u>
<b>Net Increase (Decrease) in Cash Flows</b>	<b>(9,434)</b>			<b>(9,434)</b>	<b>(2,997,888)</b>
0004 Cash and Cash Equivalents Beginning of Year	215,877			215,877	4,229,642
<b>Cash and Cash Equivalents at Year End</b>	<b>\$206,443</b>			<b>\$206,443</b>	<b>\$1,231,754</b>
<b>Reconciliation of Operating Income (Loss) To Net Cash Provided by (Used For) Operating Activities</b>					
0005 Operating Income (Loss) per REP	(2,666,750)			(2,666,750)	(1,200,000)
<b>Adjustments</b>					
0051 Depreciation and Net Amortization	71,898			71,898	
0052 Provision for Uncollectible Accounts					
0053 Other Adjustments	96,347			96,347	
<b>Effect of Changes in Assets, Liabilities, Deferred Outflows and Deferred Inflows</b>					
0054 (Inc) Dec In Accounts Receivable (0120-0150)					
0055 Advances to Other Funds (0160)					
0056 (Inc) Dec in Inventories (0170)	(311)			(311)	
0057 (Inc) Dec in Prepaid Expenses (0180)					
0058 (Inc) Dec in Other Current or Noncurrent Assets	(158,259)			(158,259)	(288,430)
0064 Deferred Outflows (0910)	(165,162)			(165,162)	
0059 Inc (Dec) in Accounts Payable (0400-0450)					
0060 Inc (Dec) in Accrued Salaries/Benefits (0461)	(14,618)			(14,618)	288,430
0065 Inc (Dec) in Net Pension Liabilities (0570)	751,885			751,885	
0066 Inc (Dec) in Other Postemp Benefit Oblig (0560)	(1,790)			(1,790)	
0061 Inc (Dec) in Payroll Deductions/Withholding (0462)					
0062 Inc (Dec) in Unearned Revenue (0480)	(21,181)			(21,181)	
0063 Inc (Dec) in Other Current or Noncurrent Liabilities	(247,100)			(247,100)	1,200,000
0067 Deferred Inflows (0950)	292,860			292,860	
<b>Total Adjustments</b>	<b>\$604,569</b>			<b>\$604,569</b>	<b>\$1,200,000</b>
<b>Cash Provided By (Used for) Total</b>	<b>(\$2,062,181)</b>			<b>(\$2,062,181)</b>	

COMBINED STATEMENT OF CASH FLOWS  
SCHEDULE OF NONCASH INVESTING, CAPITAL, AND FINANCING ACTIVITIES

Explanation of Transaction and Balance Sheet Effect	Amount
Total	

LEA : 124158503     Unionville-Chadds Ford SD

Printed 2/14/2023 9:28:26 AM

Amounts Expressed in Whole Dollars		<u>Private Purpose Trust</u> <u>(71)</u>	<u>Investment Trust</u> <u>(72)</u>	<u>Pension Trust</u> <u>(73)</u>	<u>Student Activity Custodial</u> <u>(81)</u>
<b>Assets And Deferred Outflows Of Resources</b>					
<b>Assets</b>					
0100	Cash and Cash Equivalents	29,130			407,951
0110	Investments				
0130	Due From Other Funds				
0140	Due from Other Governments, Primary Government and Component Units				
0150	Other Receivables				
0170	Inventories				
0180	Prepaid Expenses (Expenditures)				
0190	Other Current Assets				
0220	Buildings and Building Improvements (Net)				
0230	Machinery, Equipment and Furniture (Net)				
<b>Total Assets</b>		<b>\$29,130</b>			<b>\$407,951</b>
0910	Deferred Outflows of Resources				
<b>Total Assets And Deferred Outflows Of Resources</b>		<b>\$29,130</b>			<b>\$407,951</b>

LEA : 124158503     Unionville-Chadds Ford SD

Printed 2/14/2023 9:28:26 AM

Amounts Expressed in Whole Dollars		<u>Other Custodial</u> <u>(89)</u>	<u>Fiduciary Component Units</u> <u>(98)</u>	<u>Total Fiduciary Funds</u>
<b>Assets And Deferred Outflows Of Resources</b>				
<b>Assets</b>				
0100	Cash and Cash Equivalents			437,081
0110	Investments			
0130	Due From Other Funds			
0140	Due from Other Governments, Primary Government and Component Units			
0150	Other Receivables			
0170	Inventories			
0180	Prepaid Expenses (Expenditures)			
0190	Other Current Assets			
0220	Buildings and Building Improvements (Net)			
0230	Machinery, Equipment and Furniture (Net)			
<b>Total Assets</b>				<b>\$437,081</b>
0910	Deferred Outflows of Resources			
<b>Total Assets And Deferred Outflows Of Resources</b>				<b>\$437,081</b>

LEA : 124158503     Unionville-Chadds Ford SD

Printed 2/14/2023 9:28:26 AM

Amounts Expressed in Whole Dollars		<u>Private Purpose Trust</u> <u>(71)</u>	<u>Investment Trust</u> <u>(72)</u>	<u>Pension Trust</u> <u>(73)</u>	<u>Student Activity Custodial</u> <u>(81)</u>
<b>Liabilities, Deferred Inflows Of Resources And Net Position</b>					
<b>Liabilities</b>					
0400	Due to Other Funds				
0410	Due to Other Governments, Primary Government and Component Units				
0420	Accounts Payable				
0430	Contracts Payable				
0450	Short-Term Payables				
0460	Payroll Accruals and Withholdings				
0480	Unearned Revenues				
0490	Other Current Liabilities				
<b>Total Liabilities</b>					
0950	Deferred Inflows of Resources				
<b>Net Position</b>					
0791	Net Investment in Capital Assets				
0009	Restricted Net Position (0792 – 0798)	29,130			407,951
0799	Unrestricted Net Position				
<b>Total Net Position</b>		<b>\$29,130</b>			<b>\$407,951</b>
<b>Total Liabilities, Deferred Inflows Of Resources And Net Position</b>		<b>\$29,130</b>			<b>\$407,951</b>

LEA : 124158503     Unionville-Chadds Ford SD

Printed 2/14/2023 9:28:26 AM

Amounts Expressed in Whole Dollars		<u>Other Custodial</u> <u>(89)</u>	<u>Fiduciary Component Units</u> <u>(98)</u>	<u>Total Fiduciary Funds</u>
<b>Liabilities, Deferred Inflows Of Resources And Net Position</b>				
<b>Liabilities</b>				
0400	Due to Other Funds			
0410	Due to Other Governments, Primary Government and Component Units			
0420	Accounts Payable			
0430	Contracts Payable			
0450	Short-Term Payables			
0460	Payroll Accruals and Withholdings			
0480	Unearned Revenues			
0490	Other Current Liabilities			
<b>Total Liabilities</b>				
0950	Deferred Inflows of Resources			
<b>Net Position</b>				
0791	Net Investment in Capital Assets			
0009	Restricted Net Position (0792 – 0798)			437,081
0799	Unrestricted Net Position			
<b>Total Net Position</b>				<b>\$437,081</b>
<b>Total Liabilities, Deferred Inflows Of Resources And Net Position</b>				<b>\$437,081</b>

LEA : 124158503     Unionville-Chadds Ford SD

Printed 2/14/2023 9:28:27 AM

Amounts Expressed in Whole Dollars	<u>Private Purpose Trust</u> <u>(71)</u>	<u>Investment Trust</u> <u>(72)</u>	<u>Pension Trust</u> <u>(73)</u>	<u>Student Activity</u> <u>Custodial</u> <u>(81)</u>	<u>Other Custodial</u> <u>(89)</u>	<u>Fiduciary Component</u> <u>Units</u> <u>(98)</u>
<b>Additions</b>						
0091 Gifts and Contributions	25,465			523,178		
0095 Net Investment Earnings						
0092 Other Additions						
<b>Deductions</b>						
0093 Scholarships Awarded	30,800					
0094 Other Deductions				507,722		
<b>Change In Net Position</b>	<b>(\$5,335)</b>			<b>\$15,456</b>		
0006 Net Position – Beginning of Fiscal Year	34,465			392,495		
0007 Net Position Held in Trust for Pension Benefits						
<b>Net Position - End of Fiscal Year</b>	<b>\$29,130</b>			<b>\$407,951</b>		

LEA : 124158503      Unionville-Chadds Ford SD

Printed 2/14/2023 9:28:27 AM

Amounts Expressed in Whole Dollars		<u>Total Fiduciary</u> <u>Funds</u>
<b>Additions</b>		
0091	Gifts and Contributions	548,643
0095	Net Investment Earnings	
0092	Other Additions	
<b>Deductions</b>		
0093	Scholarships Awarded	30,800
0094	Other Deductions	507,722
<b>Change In Net Position</b>		<b>\$10,121</b>
0006	Net Position – Beginning of Fiscal Year	426,960
0007	Net Position Held in Trust for Pension Benefits	
<b>Net Position - End of Fiscal Year</b>		<b>\$437,081</b>



	Revenue Reported In Current Year	Current Year Tax Accrual	Prior Year Tax Accrual	Taxes Collected In Current Year
<b>Revenue from Local Sources</b>				
6111 Current Real Estate Taxes	70,117,324.76			70,117,324.76
6112 Interim Real Estate Taxes	359,450.70	8,822.00	67,076.00	417,704.70
6113 Public Utility Realty Taxes	70,572.62			70,572.62
6153 Current Act 511 Real Estate Transfer Taxes	2,532,002.53	220,292.00	167,936.00	2,479,646.53
6411 Delinquent Real Estate Taxes	1,255,218.68	169,858.00	178,636.00	1,263,996.68
6500 Earnings on Investments	29,287.16			
6700 Revenues from LEA Activities	333,559.99			
6832 Federal IDEA Revenue Received as Pass Through	543,070.20			
6910 Rentals	47,836.19			
6941 Regular Day School Tuition	17,609.63			
6944 Receipts from Other LEAs in Pennsylvania - Education	215,174.79			
6949 Other Tuition from Patrons	11,235.00			
6992 Energy Efficiency Revenues and Incentives	41,746.29			
6999 Other Revenues Not Specified Above	51,450.64			
<b>TOTAL Revenue from Local Sources</b>	<b>\$75,625,539.18</b>	<b>\$398,972.00</b>	<b>\$413,648.00</b>	<b>\$74,349,245.29</b>

	Revenue Reported In Current Year			
<b><u>Revenue from State Sources</u></b>				
7111 Basic Education Funding-Formula	3,515,630.31			
7112 Basic Education Funding-Social Security	934,764.52			
7160 Tuition for Orphans Subsidy	16,106.28			
7250 Migratory Children	120.00			
7271 Special Education funds for School-Aged Pupils	1,886,637.87			
7311 Pupil Transportation Subsidy	454,970.75			
7312 Nonpublic and Charter School Pupil Transportation Subsidy	97,020.00			
7320 Rental and Sinking Fund Payments / Building Reimbursement Subsidy	279,024.07			
7330 Health Services (Medical, Dental, Nurse, Act 25)	76,990.41			
7340 State Property Tax Reduction Allocation	1,488,647.19			
7361 School Safety and Security Grants	15,398.00			
7505 Ready to Learn Block Grant	127,325.00			
7810 State Share of Social Security and Medicare Taxes	596,513.62			
7820 State Share of Retirement Contributions	7,346,470.79			
<b>TOTAL Revenue from State Sources</b>	<b>\$16,835,618.81</b>			

Revenue Reported In Current Year				
Revenue from Federal Sources				
8514 NCLB, Title I - Improving the Academic Achievement of the Disadvantaged	101,614.31			
8515 NCLB, Title II - Preparing, Training and Recruiting High Quality Teachers and Principals	53,838.00			
8516 NCLB, Title III - Language Instruction for Limited English Proficient and Immigrant Students	7,494.32			
8517 NCLB, Title IV - 21St Century Schools	10,000.00			
8743 ESSER II - Elementary and Secondary School Emergency Relief Fund	491,253.83			
8810 School-Based Access Medicaid Reimbursement Program (SBAP) Reimbursements (Access)	392,817.20			
TOTAL Revenue from Federal Sources	\$1,057,017.66			

	Revenue Reported In Current Year			
<b><u>Other Financing Sources</u></b>				
9400 Sale of or Compensation for Loss of Fixed Assets	3,626.00			
<b>TOTAL Other Financing Sources</b>	<b>\$3,626.00</b>			
<b>TOTAL FROM ALL SOURCES</b>	<b>\$93,521,801.65</b>	<b>\$398,972.00</b>	<b>\$413,648.00</b>	<b>\$74,349,245.29</b>

LEA : 124158503     Unionville-Chadds Ford SD

Printed 2/14/2023 9:28:30 AM

	<u>General Fund (10)</u>	<u>Student Sponsored Activity Fund (21)</u>	<u>Public Purpose Trust (27)</u>	<u>Other Compt Approved (28)</u>	<u>Athletic / Activity (29)</u>	<u>Capital Reserve (690, 1850) (31)</u>
<b>6000 Revenue from Local Sources</b>						
6111 Current Real Estate Taxes	70,117,324.76					
6112 Interim Real Estate Taxes	359,450.70					
6113 Public Utility Realty Taxes	70,572.62					
6153 Current Act 511 Real Estate Transfer Taxes	2,532,002.53					
6411 Delinquent Real Estate Taxes	1,255,218.68					
6500 Earnings on Investments	29,287.16					
6700 Revenues from LEA Activities	333,559.99					
6832 Federal IDEA Revenue Received as Pass Through	543,070.20					
6910 Rentals	47,836.19					
6941 Regular Day School Tuition	17,609.63					
6944 Receipts from Other LEAs in Pennsylvania - Education	215,174.79					
6949 Other Tuition from Patrons	11,235.00					
6992 Energy Efficiency Revenues and Incentives	41,746.29					
6999 Other Revenues Not Specified Above	51,450.64					
<b>6000 Total Revenue from Local Sources</b>	<b>\$75,625,539.18</b>					
<b>7000 Revenue from State Sources</b>						
7111 Basic Education Funding-Formula	3,515,630.31					
7112 Basic Education Funding-Social Security	934,764.52					
7160 Tuition for Orphans Subsidy	16,106.28					
7250 Migratory Children	120.00					
7271 Special Education funds for School-Aged Pupils	1,886,637.87					
7311 Pupil Transportation Subsidy	454,970.75					
7312 Nonpublic and Charter School Pupil Transportation Subsidy	97,020.00					
7320 Rental and Sinking Fund Payments / Building Reimbursement Subsidy	279,024.07					
7330 Health Services (Medical, Dental, Nurse, Act 25)	76,990.41					
7340 State Property Tax Reduction Allocation	1,488,647.19					
7361 School Safety and Security Grants	15,398.00					
7505 Ready to Learn Block Grant	127,325.00					
7810 State Share of Social Security and Medicare Taxes	596,513.62					
7820 State Share of Retirement Contributions	7,346,470.79					
<b>7000 Total Revenue from State Sources</b>	<b>\$16,835,618.81</b>					
<b>8000 Revenue from Federal Sources</b>						
8514 NCLB, Title I - Improving the Academic Achievement of the Disadvantaged	101,614.31					
8515 NCLB, Title II - Preparing, Training and Recruiting High Quality Teachers and Principals	53,838.00					

LEA : 124158503      Unionville-Chadds Ford SD

Printed 2/14/2023 9:28:30 AM

	<u>Capital Reserve</u> <u>(1431) (32)</u>	<u>Other Capital</u> <u>Projects Fund (39)</u>	<u>Debt Service (40)</u>	<u>Permanent (90)</u>	<u>Total</u>
<b>6000 Revenue from Local Sources</b>					
6111 Current Real Estate Taxes					70,117,324.76
6112 Interim Real Estate Taxes					359,450.70
6113 Public Utility Realty Taxes					70,572.62
6153 Current Act 511 Real Estate Transfer Taxes					2,532,002.53
6411 Delinquent Real Estate Taxes					1,255,218.68
6500 Earnings on Investments	891.20	24,793.77			54,972.13
6700 Revenues from LEA Activities					333,559.99
6832 Federal IDEA Revenue Received as Pass Through					543,070.20
6910 Rentals					47,836.19
6941 Regular Day School Tuition					17,609.63
6944 Receipts from Other LEAs in Pennsylvania - Education					215,174.79
6949 Other Tuition from Patrons					11,235.00
6992 Energy Efficiency Revenues and Incentives					41,746.29
6999 Other Revenues Not Specified Above					51,450.64
<b>6000 Total Revenue from Local Sources</b>	<b>\$891.20</b>	<b>\$24,793.77</b>			<b>\$75,651,224.15</b>
<b>7000 Revenue from State Sources</b>					
7111 Basic Education Funding-Formula					3,515,630.31
7112 Basic Education Funding-Social Security					934,764.52
7160 Tuition for Orphans Subsidy					16,106.28
7250 Migratory Children					120.00
7271 Special Education funds for School-Aged Pupils					1,886,637.87
7311 Pupil Transportation Subsidy					454,970.75
7312 Nonpublic and Charter School Pupil Transportation Subsidy					97,020.00
7320 Rental and Sinking Fund Payments / Building Reimbursement Subsidy					279,024.07
7330 Health Services (Medical, Dental, Nurse, Act 25)					76,990.41
7340 State Property Tax Reduction Allocation					1,488,647.19
7361 School Safety and Security Grants					15,398.00
7505 Ready to Learn Block Grant					127,325.00
7810 State Share of Social Security and Medicare Taxes					596,513.62
7820 State Share of Retirement Contributions					7,346,470.79
<b>7000 Total Revenue from State Sources</b>					<b>\$16,835,618.81</b>
<b>8000 Revenue from Federal Sources</b>					
8514 NCLB, Title I - Improving the Academic Achievement of the Disadvantaged					101,614.31
8515 NCLB, Title II - Preparing, Training and Recruiting High Quality Teachers and Principals					53,838.00

LEA : 124158503      Unionville-Chadds Ford SD

Printed 2/14/2023 9:28:30 AM

	<u>General Fund (10)</u>	<u>Student Sponsored Activity Fund (21)</u>	<u>Public Purpose Trust (27)</u>	<u>Other Compt Approved (28)</u>	<u>Athletic / Activity (29)</u>	<u>Capital Reserve (690, 1850) (31)</u>
<b>8000 Revenue from Federal Sources</b>						
8516 NCLB, Title III - Language Instruction for Limited English Proficient and Immigrant Students	7,494.32					
8517 NCLB, Title IV - 21st Century Schools	10,000.00					
8743 ESSER II - Elementary and Secondary School Emergency Relief Fund	491,253.83					
8810 School-Based Access Medicaid Reimbursement Program (SBAP) Reimbursements (Access)	392,817.20					
<b>8000 Total Revenue from Federal Sources</b>	<b>\$1,057,017.66</b>					
<b>9000 Other Financing Sources</b>						
9110 Face Value of Bonds Issued						
9120 Proceeds from Refunding of Bonds						
9130 Bond Premiums						
9310 General Fund Transfers						
9400 Sale of or Compensation for Loss of Fixed Assets	3,626.00					
<b>9000 Total Other Financing Sources</b>	<b>\$3,626.00</b>					
<b>Total From All Sources</b>	<b>\$93,521,801.65</b>					

LEA : 124158503     Unionville-Chadds Ford SD

Printed 2/14/2023 9:28:30 AM

	<u>Capital Reserve</u> <u>(1431) (32)</u>	<u>Other Capital</u> <u>Projects Fund (39)</u>	<u>Debt Service (40)</u>	<u>Permanent (90)</u>	<u>Total</u>
<b>8000 Revenue from Federal Sources</b>					
8516 NCLB, Title III - Language Instruction for Limited English Proficient and Immigrant Students					7,494.32
8517 NCLB, Title IV - 21st Century Schools					10,000.00
8743 ESSER II - Elementary and Secondary School Emergency Relief Fund					491,253.83
8810 School-Based Access Medicaid Reimbursement Program (SBAP) Reimbursements (Access)					392,817.20
<b>8000 Total Revenue from Federal Sources</b>					<b>\$1,057,017.66</b>
<b>9000 Other Financing Sources</b>					
9110 Face Value of Bonds Issued		11,385,000.00			11,385,000.00
9120 Proceeds from Refunding of Bonds		2,445,000.00			2,445,000.00
9130 Bond Premiums		1,377,669.75			1,377,669.75
9310 General Fund Transfers	764,467.00				764,467.00
9400 Sale of or Compensation for Loss of Fixed Assets					3,626.00
<b>9000 Total Other Financing Sources</b>	<b>\$764,467.00</b>	<b>\$15,207,669.75</b>			<b>\$15,975,762.75</b>
<b>Total From All Sources</b>	<b>\$765,358.20</b>	<b>\$15,232,463.52</b>			<b>\$109,519,623.37</b>



	<u>General Fund (10)</u>	<u>Student Sponsored Activity Fund (21)</u>	<u>Public Purpose Trust (27)</u>	<u>Other Compt Approved (28)</u>	<u>Athletic / Activity (29)</u>	<u>Capital Reserve (690. 1850) (31)</u>
Revenue from Local Sources	75,625,539.18					
Revenue from State Sources	16,835,618.81					
Revenue from Federal Sources	1,057,017.66					
Other Financing Sources	3,626.00					
Total From All Sources	\$93,521,801.65					

LEA : 124158503     Unionville-Chadds Ford SD

Printed 2/14/2023 9:28:32 AM

	<u>Capital Reserve (1431)</u> <u>(32)</u>	<u>Other Capital Projects</u> <u>Fund (39)</u>	<u>Debt Service (40)</u>	<u>Permanent (90)</u>	<u>Total</u>
Revenue from Local Sources	891.20	24,793.77			75,651,224.15
Revenue from State Sources					16,835,618.81
Revenue from Federal Sources					1,057,017.66
Other Financing Sources	764,467.00	15,207,669.75			15,975,762.75
Total From All Sources	\$765,358.20	\$15,232,463.52			\$109,519,623.37

LEA : 124158503      Unionville-Chadds Ford SD

Printed 2/14/2023 9:28:34 AM

General Fund (10)

1000 Instruction		Total
<b>100 <u>Personnel Services – Salaries</u></b>		
100 Personnel Services – Salaries		28,385,721.32
<b>Total Personnel Services – Salaries</b>		<b>\$28,385,721.32</b>
<b>200 <u>Personnel Services – Employee Benefits</u></b>		
220 Social Security Contributions		2,066,301.41
230 PSERS Retirement Contributions		9,713,494.56
250 Unemployment Compensation		1,546.01
260 Workers' Compensation		170,629.96
270 Group Insurance – Self-Insurance		4,586,204.83
<b>Total Personnel Services – Employee Benefits</b>		<b>\$16,538,176.77</b>
<b>300 <u>Purchased Professional and Technical Services</u></b>		
322 Professional Educational Services – Ius		2,664,542.29
329 Professional Educational Services – Other		2,049,444.69
330 Other Professional Services		702,021.45
<b>Total Purchased Professional and Technical Services</b>		<b>\$5,416,008.43</b>
<b>400 <u>Purchased Property Services</u></b>		
430 Repairs and Maintenance Services		92,252.34
<b>Total Purchased Property Services</b>		<b>\$92,252.34</b>
<b>500 <u>Other Purchased Services</u></b>		
530 Communications		880.22
561 Tuition To Other School Districts Within the State		321,167.91
562 Tuition To Pennsylvania Charter Schools		677,179.44
564 Tuition To Career and Technology Centers		830,106.27
567 Tuition To Approved Private Schools (APS) and PA Chartered Schools for the Deaf and Blind		90,672.32
569 Tuition – Other		207,576.93
580 Travel		48,679.44
599 Other Miscellaneous Purchased Services		109,491.29
<b>Total Other Purchased Services</b>		<b>\$2,285,753.82</b>
<b>600 <u>Supplies</u></b>		
610 General Supplies		233,106.18
630 Food		232.43
640 Books and Periodicals		196,684.25
650 Supplies & Fees – Technology Related		44,730.92
<b>Total Supplies</b>		<b>\$474,753.78</b>
<b>700 <u>Property</u></b>		
752 Capital Equipment – Original and Additional		237,867.07
762 Capitalized Equipment - Replacement		4,734.93
<b>Total Property</b>		<b>\$242,602.00</b>
<b>Total 1000 Instruction</b>		<b>\$53,435,268.46</b>

LEA : 124158503     Unionville-Chadds Ford SD

Printed 2/14/2023 9:28:34 AM

General Fund (10)

1100 Regular Programs – Elementary / Secondary	Elementary	Secondary	Federal	Total
<b>100 Personnel Services – Salaries</b>				
100 Personnel Services – Salaries	10,622,342.37	10,879,832.61	235,684.39	21,737,859.37
<b>Total Personnel Services – Salaries</b>	<b>\$10,622,342.37</b>	<b>\$10,879,832.61</b>	<b>\$235,684.39</b>	<b>\$21,737,859.37</b>
<b>200 Personnel Services – Employee Benefits</b>				
220 Social Security Contributions	778,393.91	801,180.80	2,748.67	1,582,323.38
230 PSERS Retirement Contributions	3,653,329.07	3,761,227.63	25,609.04	7,440,165.74
250 Unemployment Compensation	523.97	541.25		1,065.22
260 Workers' Compensation	64,290.52	66,410.22		130,700.74
270 Group Insurance – Self-Insurance	1,307,992.12	1,351,117.45		2,659,109.57
<b>Total Personnel Services – Employee Benefits</b>	<b>\$5,804,529.59</b>	<b>\$5,980,477.35</b>	<b>\$28,357.71</b>	<b>\$11,813,364.65</b>
<b>300 Purchased Professional and Technical Services</b>				
322 Professional Educational Services – lus			19,825.00	19,825.00
329 Professional Educational Services – Other	485,640.24	333,284.43	150,801.01	969,725.68
<b>Total Purchased Professional and Technical Services</b>	<b>\$485,640.24</b>	<b>\$333,284.43</b>	<b>\$170,626.01</b>	<b>\$989,550.68</b>
<b>400 Purchased Property Services</b>				
430 Repairs and Maintenance Services	44,178.94	46,417.82		90,596.76
<b>Total Purchased Property Services</b>	<b>\$44,178.94</b>	<b>\$46,417.82</b>		<b>\$90,596.76</b>
<b>500 Other Purchased Services</b>				
530 Communications	220.06	220.05		440.11
562 Tuition To Pennsylvania Charter Schools	151,568.49	318,976.82		470,545.31
569 Tuition – Other	44,765.42	55,013.65		99,779.07
580 Travel	6,604.48	37,197.87		43,802.35
<b>Total Other Purchased Services</b>	<b>\$203,158.45</b>	<b>\$411,408.39</b>		<b>\$614,566.84</b>
<b>600 Supplies</b>				
610 General Supplies	68,224.17	113,080.67	28,786.75	210,091.59
640 Books and Periodicals	125,519.58	67,955.63	136.47	193,611.68
<b>Total Supplies</b>	<b>\$193,743.75</b>	<b>\$181,036.30</b>	<b>\$28,923.22</b>	<b>\$403,703.27</b>
<b>700 Property</b>				
752 Capital Equipment – Original and Additional	56,642.25	181,224.82		237,867.07
762 Capitalized Equipment - Replacement	4,734.93			4,734.93
<b>Total Property</b>	<b>\$61,377.18</b>	<b>\$181,224.82</b>		<b>\$242,602.00</b>
<b>Total 1100 Regular Programs – Elementary / Secondary</b>	<b>\$17,414,970.52</b>	<b>\$18,013,681.72</b>	<b>\$463,591.33</b>	<b>\$35,892,243.57</b>

LEA : 124158503      Unionville-Chadds Ford SD

Printed 2/14/2023 9:28:34 AM

General Fund (10)

1110 Regular Programs

	Elementary	Secondary	Federal	Total
<b>100 <u>Personnel Services – Salaries</u></b>				
100 Personnel Services – Salaries	10,622,342.37	10,879,832.61		21,502,174.98
<b>Total Personnel Services – Salaries</b>	<b>\$10,622,342.37</b>	<b>\$10,879,832.61</b>		<b>\$21,502,174.98</b>
<b>200 <u>Personnel Services – Employee Benefits</u></b>				
220 Social Security Contributions	778,393.91	801,180.80		1,579,574.71
230 PSERS Retirement Contributions	3,653,329.07	3,761,227.63		7,414,556.70
250 Unemployment Compensation	523.97	541.25		1,065.22
260 Workers' Compensation	64,290.52	66,410.22		130,700.74
270 Group Insurance – Self-Insurance	1,307,992.12	1,351,117.45		2,659,109.57
<b>Total Personnel Services – Employee Benefits</b>	<b>\$5,804,529.59</b>	<b>\$5,980,477.35</b>		<b>\$11,785,006.94</b>
<b>300 <u>Purchased Professional and Technical Services</u></b>				
329 Professional Educational Services – Other	485,640.24	333,284.43		818,924.67
<b>Total Purchased Professional and Technical Services</b>	<b>\$485,640.24</b>	<b>\$333,284.43</b>		<b>\$818,924.67</b>
<b>400 <u>Purchased Property Services</u></b>				
430 Repairs and Maintenance Services	44,178.94	46,417.82		90,596.76
<b>Total Purchased Property Services</b>	<b>\$44,178.94</b>	<b>\$46,417.82</b>		<b>\$90,596.76</b>
<b>500 <u>Other Purchased Services</u></b>				
530 Communications	220.06	220.05		440.11
562 Tuition To Pennsylvania Charter Schools	151,568.49	318,976.82		470,545.31
569 Tuition – Other	44,765.42	55,013.65		99,779.07
580 Travel	6,604.48	37,197.87		43,802.35
<b>Total Other Purchased Services</b>	<b>\$203,158.45</b>	<b>\$411,408.39</b>		<b>\$614,566.84</b>
<b>600 <u>Supplies</u></b>				
610 General Supplies	68,224.17	113,080.67		181,304.84
640 Books and Periodicals	125,519.58	67,955.63		193,475.21
<b>Total Supplies</b>	<b>\$193,743.75</b>	<b>\$181,036.30</b>		<b>\$374,780.05</b>
<b>700 <u>Property</u></b>				
752 Capital Equipment – Original and Additional	56,642.25	181,224.82		237,867.07
762 Capitalized Equipment - Replacement	4,734.93			4,734.93
<b>Total Property</b>	<b>\$61,377.18</b>	<b>\$181,224.82</b>		<b>\$242,602.00</b>
<b>Total 1110 Regular Programs</b>	<b>\$17,414,970.52</b>	<b>\$18,013,681.72</b>		<b>\$35,428,652.24</b>

LEA : 124158503      Unionville-Chadds Ford SD

Printed 2/14/2023 9:28:34 AM

General Fund (10)

1190 Federally-Funded Regular Programs	<u>Elementary</u>	<u>Secondary</u>	<u>Federal</u>	<u>Total</u>
<b>100 <u>Personnel Services – Salaries</u></b>				
100 Personnel Services – Salaries			235,684.39	235,684.39
<b>Total Personnel Services – Salaries</b>			<b>\$235,684.39</b>	<b>\$235,684.39</b>
<b>200 <u>Personnel Services – Employee Benefits</u></b>				
220 Social Security Contributions			2,748.67	2,748.67
230 PSERS Retirement Contributions			25,609.04	25,609.04
<b>Total Personnel Services – Employee Benefits</b>			<b>\$28,357.71</b>	<b>\$28,357.71</b>
<b>300 <u>Purchased Professional and Technical Services</u></b>				
322 Professional Educational Services – Ius			19,825.00	19,825.00
329 Professional Educational Services – Other			150,801.01	150,801.01
<b>Total Purchased Professional and Technical Services</b>			<b>\$170,626.01</b>	<b>\$170,626.01</b>
<b>600 <u>Supplies</u></b>				
610 General Supplies			28,786.75	28,786.75
640 Books and Periodicals			136.47	136.47
<b>Total Supplies</b>			<b>\$28,923.22</b>	<b>\$28,923.22</b>
<b>Total 1190 Federally-Funded Regular Programs</b>			<b>\$463,591.33</b>	<b>\$463,591.33</b>

LEA : 124158503      Unionville-Chadds Ford SD

Printed 2/14/2023 9:28:34 AM

General Fund (10)

1200 Special Programs – Elementary / Secondary	Elementary	Secondary	Federal	Total
<b>100 Personnel Services – Salaries</b>				
100 Personnel Services – Salaries	3,472,557.10	2,523,125.89	648,309.71	6,643,992.70
<b>Total Personnel Services – Salaries</b>	<b>\$3,472,557.10</b>	<b>\$2,523,125.89</b>	<b>\$648,309.71</b>	<b>\$6,643,992.70</b>
<b>200 Personnel Services – Employee Benefits</b>				
220 Social Security Contributions	244,223.92	218,475.40	20,966.47	483,665.79
230 PSERS Retirement Contributions	1,144,129.92	1,020,623.93	107,108.31	2,271,862.16
250 Unemployment Compensation	247.65	233.14		480.79
260 Workers' Compensation	20,845.35	19,058.19		39,903.54
270 Group Insurance – Self-Insurance	987,310.10	916,893.53	22,891.63	1,927,095.26
<b>Total Personnel Services – Employee Benefits</b>	<b>\$2,396,756.94</b>	<b>\$2,175,284.19</b>	<b>\$150,966.41</b>	<b>\$4,723,007.54</b>
<b>300 Purchased Professional and Technical Services</b>				
322 Professional Educational Services – lus	898,785.50	1,642,042.27	103,889.52	2,644,717.29
329 Professional Educational Services – Other	805,654.11	262,488.06	93.14	1,068,235.31
330 Other Professional Services	22,990.03	679,031.42		702,021.45
<b>Total Purchased Professional and Technical Services</b>	<b>\$1,727,429.64</b>	<b>\$2,583,561.75</b>	<b>\$103,982.66</b>	<b>\$4,414,974.05</b>
<b>400 Purchased Property Services</b>				
430 Repairs and Maintenance Services	827.79	827.79		1,655.58
<b>Total Purchased Property Services</b>	<b>\$827.79</b>	<b>\$827.79</b>		<b>\$1,655.58</b>
<b>500 Other Purchased Services</b>				
530 Communications		440.11		440.11
562 Tuition To Pennsylvania Charter Schools	79,045.48	127,588.65		206,634.13
567 Tuition To Approved Private Schools (APS) and PA Chartered Schools for the Deaf and Blind	38,186.56	52,485.76		90,672.32
569 Tuition – Other	75,827.56	31,970.30		107,797.86
580 Travel	1,879.22	2,997.87		4,877.09
<b>Total Other Purchased Services</b>	<b>\$194,938.82</b>	<b>\$215,482.69</b>		<b>\$410,421.51</b>
<b>600 Supplies</b>				
610 General Supplies	9,660.62	13,353.97		23,014.59
630 Food	125.79	106.64		232.43
640 Books and Periodicals	3,046.77	25.80		3,072.57
650 Supplies & Fees – Technology Related	12,718.92	32,012.00		44,730.92
<b>Total Supplies</b>	<b>\$25,552.10</b>	<b>\$45,498.41</b>		<b>\$71,050.51</b>
<b>Total 1200 Special Programs – Elementary / Secondary</b>	<b>\$7,818,062.39</b>	<b>\$7,543,780.72</b>	<b>\$903,258.78</b>	<b>\$16,265,101.89</b>

LEA : 124158503     Unionville-Chadds Ford SD

Printed 2/14/2023 9:28:34 AM

General Fund (10)

1210 Life Skills Support

	<u>Elementary</u>	<u>Secondary</u>	<u>Federal</u>	<u>Total</u>
<b>100 <u>Personnel Services – Salaries</u></b>				
100 Personnel Services – Salaries			62,261.83	62,261.83
<b>Total Personnel Services – Salaries</b>			<b>\$62,261.83</b>	<b>\$62,261.83</b>
<b>200 <u>Personnel Services – Employee Benefits</u></b>				
220 Social Security Contributions		3,739.92	943.73	4,683.65
230 PSERS Retirement Contributions		10,604.77	11,395.19	21,999.96
250 Unemployment Compensation		4.14		4.14
260 Workers' Compensation		385.17		385.17
270 Group Insurance – Self-Insurance		27,021.70		27,021.70
<b>Total Personnel Services – Employee Benefits</b>		<b>\$41,755.70</b>	<b>\$12,338.92</b>	<b>\$54,094.62</b>
<b>300 <u>Purchased Professional and Technical Services</u></b>				
322 Professional Educational Services – lus	299,275.28	71,428.57	103,889.52	474,593.37
329 Professional Educational Services – Other	159,632.55	29,169.82		188,802.37
<b>Total Purchased Professional and Technical Services</b>	<b>\$458,907.83</b>	<b>\$100,598.39</b>	<b>\$103,889.52</b>	<b>\$663,395.74</b>
<b>500 <u>Other Purchased Services</u></b>				
530 Communications		440.11		440.11
580 Travel	233.34	233.34		466.68
<b>Total Other Purchased Services</b>	<b>\$233.34</b>	<b>\$673.45</b>		<b>\$906.79</b>
<b>600 <u>Supplies</u></b>				
610 General Supplies	5,474.07	2,173.07		7,647.14
<b>Total Supplies</b>	<b>\$5,474.07</b>	<b>\$2,173.07</b>		<b>\$7,647.14</b>
<b>Total 1210 Life Skills Support</b>	<b>\$464,615.24</b>	<b>\$145,200.61</b>	<b>\$178,490.27</b>	<b>\$788,306.12</b>



LEA : 124158503     Unionville-Chadds Ford SD

Printed 2/14/2023 9:28:34 AM

General Fund (10)

1220 Sensory Support	Elementary	Secondary	Federal	Total
<b>100 <u>Personnel Services – Salaries</u></b>				
100 Personnel Services – Salaries	386,709.17	101,669.44	11,576.10	499,954.71
<b>Total Personnel Services – Salaries</b>	<b>\$386,709.17</b>	<b>\$101,669.44</b>	<b>\$11,576.10</b>	<b>\$499,954.71</b>
<b>200 <u>Personnel Services – Employee Benefits</u></b>				
220 Social Security Contributions	27,456.32	8,040.43	1,035.79	36,532.54
230 PSERS Retirement Contributions	131,166.09	38,411.23	2,022.34	171,599.66
250 Unemployment Compensation	19.24	5.63		24.87
260 Workers' Compensation	2,323.81	680.51		3,004.32
270 Group Insurance – Self-Insurance	72,736.54	21,300.48		94,037.02
<b>Total Personnel Services – Employee Benefits</b>	<b>\$233,702.00</b>	<b>\$68,438.28</b>	<b>\$3,058.13</b>	<b>\$305,198.41</b>
<b>300 <u>Purchased Professional and Technical Services</u></b>				
322 Professional Educational Services – lus	11,927.02	6,200.79		18,127.81
329 Professional Educational Services – Other	27,049.83			27,049.83
<b>Total Purchased Professional and Technical Services</b>	<b>\$38,976.85</b>	<b>\$6,200.79</b>		<b>\$45,177.64</b>
<b>500 <u>Other Purchased Services</u></b>				
580 Travel	106.81			106.81
<b>Total Other Purchased Services</b>	<b>\$106.81</b>			<b>\$106.81</b>
<b>600 <u>Supplies</u></b>				
610 General Supplies	800.93	344.63		1,145.56
<b>Total Supplies</b>	<b>\$800.93</b>	<b>\$344.63</b>		<b>\$1,145.56</b>
<b>Total 1220 Sensory Support</b>	<b>\$660,295.76</b>	<b>\$176,653.14</b>	<b>\$14,634.23</b>	<b>\$851,583.13</b>

LEA : 124158503     Unionville-Chadds Ford SD

Printed 2/14/2023 9:28:34 AM

General Fund (10)

1230 Emotional Support

	<u>Elementary</u>	<u>Secondary</u>	<u>Federal</u>	<u>Total</u>
<b>100 <u>Personnel Services – Salaries</u></b>				
100 Personnel Services – Salaries	468,981.11	246,982.59	226,339.32	942,303.02
<b>Total Personnel Services – Salaries</b>	<b>\$468,981.11</b>	<b>\$246,982.59</b>	<b>\$226,339.32</b>	<b>\$942,303.02</b>
<b>200 <u>Personnel Services – Employee Benefits</u></b>				
220 Social Security Contributions	32,362.52	32,662.07	3,669.08	68,693.67
230 PSERS Retirement Contributions	144,198.73	145,533.40	32,933.89	322,666.02
250 Unemployment Compensation	28.88	29.14		58.02
260 Workers' Compensation	2,824.34	2,850.49		5,674.83
270 Group Insurance – Self-Insurance	81,408.56	82,162.07		163,570.63
<b>Total Personnel Services – Employee Benefits</b>	<b>\$260,823.03</b>	<b>\$263,237.17</b>	<b>\$36,602.97</b>	<b>\$560,663.17</b>
<b>300 <u>Purchased Professional and Technical Services</u></b>				
322 Professional Educational Services – lus	367,300.71	1,181,954.46		1,549,255.17
329 Professional Educational Services – Other	218,759.57	96,058.60		314,818.17
<b>Total Purchased Professional and Technical Services</b>	<b>\$586,060.28</b>	<b>\$1,278,013.06</b>		<b>\$1,864,073.34</b>
<b>500 <u>Other Purchased Services</u></b>				
567 Tuition To Approved Private Schools (APS) and PA Chartered Schools for the Deaf and Blind		14,299.20		14,299.20
<b>Total Other Purchased Services</b>		<b>\$14,299.20</b>		<b>\$14,299.20</b>
<b>600 <u>Supplies</u></b>				
610 General Supplies	(1,672.02)	1,779.78		107.76
<b>Total Supplies</b>	<b>(\$1,672.02)</b>	<b>\$1,779.78</b>		<b>\$107.76</b>
<b>Total 1230 Emotional Support</b>	<b>\$1,314,192.40</b>	<b>\$1,804,311.80</b>	<b>\$262,942.29</b>	<b>\$3,381,446.49</b>

LEA : 124158503      Unionville-Chadds Ford SD

Printed 2/14/2023 9:28:34 AM

General Fund (10)

1240 Academic Support

	<u>Elementary</u>	<u>Secondary</u>	<u>Federal</u>	<u>Total</u>
<b>100 <u>Personnel Services – Salaries</u></b>				
100 Personnel Services – Salaries	2,468,805.69	2,043,491.83	170,396.00	4,682,693.52
<b>Total Personnel Services – Salaries</b>	<b>\$2,468,805.69</b>	<b>\$2,043,491.83</b>	<b>\$170,396.00</b>	<b>\$4,682,693.52</b>
<b>200 <u>Personnel Services – Employee Benefits</u></b>				
220 Social Security Contributions	176,899.52	158,383.32	5,062.99	340,345.83
230 PSERS Retirement Contributions	827,941.35	740,953.97	29,768.18	1,598,663.50
250 Unemployment Compensation	194.16	183.02		377.18
260 Workers' Compensation	14,806.61	13,285.07		28,091.68
270 Group Insurance – Self-Insurance	823,034.69	765,286.84		1,588,321.53
<b>Total Personnel Services – Employee Benefits</b>	<b>\$1,842,876.33</b>	<b>\$1,678,092.22</b>	<b>\$34,831.17</b>	<b>\$3,555,799.72</b>
<b>300 <u>Purchased Professional and Technical Services</u></b>				
322 Professional Educational Services – lus	47,119.94	237,336.11		284,456.05
329 Professional Educational Services – Other	317,090.74	69,981.70		387,072.44
<b>Total Purchased Professional and Technical Services</b>	<b>\$364,210.68</b>	<b>\$307,317.81</b>		<b>\$671,528.49</b>
<b>600 <u>Supplies</u></b>				
610 General Supplies	3,373.18	389.82		3,763.00
640 Books and Periodicals	3,046.77	25.80		3,072.57
<b>Total Supplies</b>	<b>\$6,419.95</b>	<b>\$415.62</b>		<b>\$6,835.57</b>
<b>Total 1240 Academic Support</b>	<b>\$4,682,312.65</b>	<b>\$4,029,317.48</b>	<b>\$205,227.17</b>	<b>\$8,916,857.30</b>

LEA : 124158503      Unionville-Chadds Ford SD

Printed 2/14/2023 9:28:34 AM

General Fund (10)

1241 Learning Support – Public	Elementary	Secondary	Federal	Total
<b>100 Personnel Services – Salaries</b>				
100 Personnel Services – Salaries	2,062,482.81	1,901,439.37	170,396.00	4,134,318.18
<b>Total Personnel Services – Salaries</b>	<b>\$2,062,482.81</b>	<b>\$1,901,439.37</b>	<b>\$170,396.00</b>	<b>\$4,134,318.18</b>
<b>200 Personnel Services – Employee Benefits</b>				
220 Social Security Contributions	147,323.78	147,991.84	5,062.99	300,378.61
230 PSERS Retirement Contributions	689,018.96	692,143.40	29,768.18	1,410,930.54
250 Unemployment Compensation	175.76	176.55		352.31
260 Workers' Compensation	12,374.39	12,430.51		24,804.90
270 Group Insurance – Self-Insurance	728,911.05	732,216.37		1,461,127.42
<b>Total Personnel Services – Employee Benefits</b>	<b>\$1,577,803.94</b>	<b>\$1,584,958.67</b>	<b>\$34,831.17</b>	<b>\$3,197,593.78</b>
<b>300 Purchased Professional and Technical Services</b>				
322 Professional Educational Services – lus	47,119.94	237,336.11		284,456.05
329 Professional Educational Services – Other	317,090.74	69,981.70		387,072.44
<b>Total Purchased Professional and Technical Services</b>	<b>\$364,210.68</b>	<b>\$307,317.81</b>		<b>\$671,528.49</b>
<b>600 Supplies</b>				
610 General Supplies	1,657.54	216.92		1,874.46
640 Books and Periodicals	3,046.77	25.80		3,072.57
<b>Total Supplies</b>	<b>\$4,704.31</b>	<b>\$242.72</b>		<b>\$4,947.03</b>
<b>Total 1241 Learning Support – Public</b>	<b>\$4,009,201.74</b>	<b>\$3,793,958.57</b>	<b>\$205,227.17</b>	<b>\$8,008,387.48</b>

LEA : 124158503      Unionville-Chadds Ford SD

Printed 2/14/2023 9:28:34 AM

General Fund (10)

1243 Gifted Support

	<u>Elementary</u>	<u>Secondary</u>	<u>Federal</u>	<u>Total</u>
<b>100 <u>Personnel Services – Salaries</u></b>				
100 Personnel Services – Salaries	406,322.88	142,052.46		548,375.34
<b>Total Personnel Services – Salaries</b>	<b>\$406,322.88</b>	<b>\$142,052.46</b>		<b>\$548,375.34</b>
<b>200 <u>Personnel Services – Employee Benefits</u></b>				
220 Social Security Contributions	29,575.74	10,391.48		39,967.22
230 PSERS Retirement Contributions	138,922.39	48,810.57		187,732.96
250 Unemployment Compensation	18.40	6.47		24.87
260 Workers' Compensation	2,432.22	854.56		3,286.78
270 Group Insurance – Self-Insurance	94,123.64	33,070.47		127,194.11
<b>Total Personnel Services – Employee Benefits</b>	<b>\$265,072.39</b>	<b>\$93,133.55</b>		<b>\$358,205.94</b>
<b>600 <u>Supplies</u></b>				
610 General Supplies	1,715.64	172.90		1,888.54
<b>Total Supplies</b>	<b>\$1,715.64</b>	<b>\$172.90</b>		<b>\$1,888.54</b>
<b>Total 1243 Gifted Support</b>	<b>\$673,110.91</b>	<b>\$235,358.91</b>		<b>\$908,469.82</b>

LEA : 124158503      Unionville-Chadds Ford SD

Printed 2/14/2023 9:28:34 AM

General Fund (10)

1260 Physical Support

	<u>Elementary</u>	<u>Secondary</u>	<u>Federal</u>	<u>Total</u>
300 <u>Purchased Professional and Technical Services</u>				
329 Professional Educational Services – Other	19,632.74			19,632.74
<b>Total Purchased Professional and Technical Services</b>	<b>\$19,632.74</b>			<b>\$19,632.74</b>
<b>Total 1260 Physical Support</b>	<b>\$19,632.74</b>			<b>\$19,632.74</b>

LEA : 124158503     Unionville-Chadds Ford SD

Printed 2/14/2023 9:28:34 AM

General Fund (10)

1270 Multi-Handicapped Support	<u>Elementary</u>	<u>Secondary</u>	<u>Federal</u>	<u>Total</u>
300 <u>Purchased Professional and Technical Services</u>				
322 Professional Educational Services – Ius	122,884.53	139,814.58		262,699.11
329 Professional Educational Services – Other		46,800.00		46,800.00
Total Purchased Professional and Technical Services	\$122,884.53	\$186,614.58		\$309,499.11
500 <u>Other Purchased Services</u>				
580 Travel	120.12			120.12
Total Other Purchased Services	\$120.12			\$120.12
600 <u>Supplies</u>				
610 General Supplies	1,095.00			1,095.00
Total Supplies	\$1,095.00			\$1,095.00
Total 1270 Multi-Handicapped Support	\$124,099.65	\$186,614.58		\$310,714.23

LEA : 124158503     Unionville-Chadds Ford SD

Printed 2/14/2023 9:28:34 AM

General Fund (10)

1280 Early Intervention Support	<u>Elementary</u>	<u>Secondary</u>	<u>Federal</u>	<u>Total</u>
300 <u>Purchased Professional and Technical Services</u>				
322 Professional Educational Services – lus	20,970.06			20,970.06
Total Purchased Professional and Technical Services	\$20,970.06			\$20,970.06
Total 1280 Early Intervention Support	\$20,970.06			\$20,970.06



LEA : 124158503     Unionville-Chadds Ford SD

Printed 2/14/2023 9:28:34 AM

General Fund (10)

1290 Special Programs - Other Support	Elementary	Secondary	Federal	Total
<b>100 <u>Personnel Services – Salaries</u></b>				
100 Personnel Services – Salaries	148,061.13	130,982.03	177,736.46	456,779.62
<b>Total Personnel Services – Salaries</b>	<b>\$148,061.13</b>	<b>\$130,982.03</b>	<b>\$177,736.46</b>	<b>\$456,779.62</b>
<b>200 <u>Personnel Services – Employee Benefits</u></b>				
220 Social Security Contributions	7,505.56	15,649.66	10,254.88	33,410.10
230 PSERS Retirement Contributions	40,823.75	85,120.56	30,988.71	156,933.02
250 Unemployment Compensation	5.37	11.21		16.58
260 Workers' Compensation	890.59	1,856.95		2,747.54
270 Group Insurance – Self-Insurance	10,130.31	21,122.44	22,891.63	54,144.38
<b>Total Personnel Services – Employee Benefits</b>	<b>\$59,355.58</b>	<b>\$123,760.82</b>	<b>\$64,135.22</b>	<b>\$247,251.62</b>
<b>300 <u>Purchased Professional and Technical Services</u></b>				
322 Professional Educational Services – lus	29,307.96	5,307.76		34,615.72
329 Professional Educational Services – Other	63,488.68	20,477.94	93.14	84,059.76
330 Other Professional Services	22,990.03	679,031.42		702,021.45
<b>Total Purchased Professional and Technical Services</b>	<b>\$115,786.67</b>	<b>\$704,817.12</b>	<b>\$93.14</b>	<b>\$820,696.93</b>
<b>400 <u>Purchased Property Services</u></b>				
430 Repairs and Maintenance Services	827.79	827.79		1,655.58
<b>Total Purchased Property Services</b>	<b>\$827.79</b>	<b>\$827.79</b>		<b>\$1,655.58</b>
<b>500 <u>Other Purchased Services</u></b>				
562 Tuition To Pennsylvania Charter Schools	79,045.48	127,588.65		206,634.13
567 Tuition To Approved Private Schools (APS) and PA Chartered Schools for the Deaf and Blind	38,186.56	38,186.56		76,373.12
569 Tuition – Other	75,827.56	31,970.30		107,797.86
580 Travel	1,418.95	2,764.53		4,183.48
<b>Total Other Purchased Services</b>	<b>\$194,478.55</b>	<b>\$200,510.04</b>		<b>\$394,988.59</b>
<b>600 <u>Supplies</u></b>				
610 General Supplies	589.46	8,666.67		9,256.13
630 Food	125.79	106.64		232.43
650 Supplies & Fees – Technology Related	12,718.92	32,012.00		44,730.92
<b>Total Supplies</b>	<b>\$13,434.17</b>	<b>\$40,785.31</b>		<b>\$54,219.48</b>
<b>Total 1290 Special Programs - Other Support</b>	<b>\$531,943.89</b>	<b>\$1,201,683.11</b>	<b>\$241,964.82</b>	<b>\$1,975,591.82</b>

LEA : 124158503      Unionville-Chadds Ford SD

Printed 2/14/2023 9:28:34 AM

General Fund (10)

1300 Vocational Education

	<u>Elementary</u>	<u>Secondary</u>	<u>Federal</u>	<u>Total</u>
500 <u>Other Purchased Services</u>				
561 Tuition To Other School Districts Within the State		10,117.00		10,117.00
564 Tuition To Career and Technology Centers		830,106.27		830,106.27
<b>Total Other Purchased Services</b>		<b>\$840,223.27</b>		<b>\$840,223.27</b>
<b>Total 1300 Vocational Education</b>		<b>\$840,223.27</b>		<b>\$840,223.27</b>

LEA : 124158503     Unionville-Chadds Ford SD

Printed 2/14/2023 9:28:34 AM

General Fund (10)

1400 Other Instructional Programs – Elementary / Secondary	<u>Elementary</u>	<u>Secondary</u>	<u>Federal</u>	<u>Total</u>
<b>100 <u>Personnel Services – Salaries</u></b>				
100 Personnel Services – Salaries	481.95	3,387.30		3,869.25
<b>Total Personnel Services – Salaries</b>	<b>\$481.95</b>	<b>\$3,387.30</b>		<b>\$3,869.25</b>
<b>200 <u>Personnel Services – Employee Benefits</u></b>				
220 Social Security Contributions	37.47	274.77		312.24
230 PSERS Retirement Contributions	176.00	1,290.66		1,466.66
260 Workers’ Compensation	3.08	22.60		25.68
<b>Total Personnel Services – Employee Benefits</b>	<b>\$216.55</b>	<b>\$1,588.03</b>		<b>\$1,804.58</b>
<b>300 <u>Purchased Professional and Technical Services</u></b>				
329 Professional Educational Services – Other		11,483.70		11,483.70
<b>Total Purchased Professional and Technical Services</b>		<b>\$11,483.70</b>		<b>\$11,483.70</b>
<b>500 <u>Other Purchased Services</u></b>				
561 Tuition To Other School Districts Within the State		311,050.91		311,050.91
599 Other Miscellaneous Purchased Services		109,491.29		109,491.29
<b>Total Other Purchased Services</b>		<b>\$420,542.20</b>		<b>\$420,542.20</b>
<b>Total 1400 Other Instructional Programs – Elementary / Secondary</b>	<b>\$698.50</b>	<b>\$437,001.23</b>		<b>\$437,699.73</b>

LEA : 124158503      Unionville-Chadds Ford SD

Printed 2/14/2023 9:28:34 AM

General Fund (10)

1410 Drivers' Education

300 Purchased Professional and Technical Services

	<u>Elementary</u>	<u>Secondary</u>	<u>Federal</u>	<u>Total</u>
329 Professional Educational Services – Other		11,483.70		11,483.70
<b>Total Purchased Professional and Technical Services</b>		<b>\$11,483.70</b>		<b>\$11,483.70</b>
<b>Total 1410 Drivers' Education</b>		<b>\$11,483.70</b>		<b>\$11,483.70</b>

LEA : 124158503      Unionville-Chadds Ford SD

Printed 2/14/2023 9:28:34 AM

General Fund (10)

1430 Homebound Instruction	<u>Elementary</u>	<u>Secondary</u>	<u>Federal</u>	<u>Total</u>
<b>100 <u>Personnel Services – Salaries</u></b>				
100 Personnel Services – Salaries	481.95	3,387.30		3,869.25
<b>Total Personnel Services – Salaries</b>	<b>\$481.95</b>	<b>\$3,387.30</b>		<b>\$3,869.25</b>
<b>200 <u>Personnel Services – Employee Benefits</u></b>				
220 Social Security Contributions	37.47	274.77		312.24
230 PSERS Retirement Contributions	176.00	1,290.66		1,466.66
260 Workers’ Compensation	3.08	22.60		25.68
<b>Total Personnel Services – Employee Benefits</b>	<b>\$216.55</b>	<b>\$1,588.03</b>		<b>\$1,804.58</b>
<b>500 <u>Other Purchased Services</u></b>				
599 Other Miscellaneous Purchased Services		109,491.29		109,491.29
<b>Total Other Purchased Services</b>		<b>\$109,491.29</b>		<b>\$109,491.29</b>
<b>Total 1430 Homebound Instruction</b>	<b>\$698.50</b>	<b>\$114,466.62</b>		<b>\$115,165.12</b>

LEA : 124158503     Unionville-Chadds Ford SD

Printed 2/14/2023 9:28:34 AM

General Fund (10)

1440 Alternative Regular Education Programs	<u>Elementary</u>	<u>Secondary</u>	<u>Federal</u>	<u>Total</u>
500 <u>Other Purchased Services</u>				
561 Tuition To Other School Districts Within the State		311,050.91		311,050.91
Total Other Purchased Services		\$311,050.91		\$311,050.91
Total 1440 Alternative Regular Education Programs		\$311,050.91		\$311,050.91

LEA : 124158503     Unionville-Chadds Ford SD

Printed 2/14/2023 9:28:34 AM

General Fund (10)

1441 Adjudicated / Court-Placed Programs	<u>Elementary</u>	<u>Secondary</u>	<u>Federal</u>	<u>Total</u>
500 <u>Other Purchased Services</u>				
561 Tuition To Other School Districts Within the State		311,050.91		311,050.91
Total Other Purchased Services		\$311,050.91		\$311,050.91
Total 1441 Adjudicated / Court-Placed Programs		\$311,050.91		\$311,050.91

LEA : 124158503      Unionville-Chadds Ford SD

Printed 2/14/2023 9:28:38 AM

General Fund (10)

2000 Support Services

Total

100	<u>Personnel Services – Salaries</u>	
100	Personnel Services – Salaries	13,374,996.36
Total Personnel Services – Salaries		\$13,374,996.36
200	<u>Personnel Services – Employee Benefits</u>	
220	Social Security Contributions	978,700.89
230	PSERS Retirement Contributions	4,596,524.20
240	Tuition Reimbursement	290,728.00
250	Unemployment Compensation	812.39
260	Workers' Compensation	79,755.73
270	Group Insurance – Self-Insurance	3,660,183.27
Total Personnel Services – Employee Benefits		\$9,606,704.48
300	<u>Purchased Professional and Technical Services</u>	
329	Professional Educational Services – Other	387,111.30
330	Other Professional Services	407,791.07
340	Technical Services	15,622.00
350	Security / Safety Services	1,348.96
Total Purchased Professional and Technical Services		\$811,873.33
400	<u>Purchased Property Services</u>	
410	Cleaning Services	46,576.04
420	Utility Services	147,591.55
430	Repairs and Maintenance Services	683,367.66
440	Rentals	7,273.43
Total Purchased Property Services		\$884,808.68
500	<u>Other Purchased Services</u>	
513	Contracted Carriers	468.00
516	Student Transportation Services From the IU	425.46
520	Insurance – General	7,242.13
521	Fire Insurance	153,999.00
522	Automotive Liability Insurance	120,672.00
523	General Property and Liability Insurance	115,610.00
529	Other Insurance	153,238.00
530	Communications	120,533.13
541	Advertising Related to Federal Grant Awards	1,040.00
549	Other Advertising/Public Relations	2,857.33
550	Printing and Binding	11,188.88
580	Travel	33,196.16
591	Services Purchased Locally	39,678.94
595	IU Payments By Withholding	40,594.51
Total Other Purchased Services		\$800,743.54
600	<u>Supplies</u>	
610	General Supplies	849,291.38
620	Energy	1,396,624.28
630	Food	23,537.45
640	Books and Periodicals	61,376.68



LEA : 124158503      Unionville-Chadds Ford SD

Printed 2/14/2023 9:28:38 AM

General Fund (10)

2000 Support Services

Total

600 <u>Supplies</u>	
650 Supplies & Fees – Technology Related	11,510.00
Total Supplies	\$2,342,339.79
700 <u>Property</u>	
752 Capital Equipment – Original and Additional	464,547.52
756 Capitalized Technology Equipment – Original	102,585.57
762 Capitalized Equipment - Replacement	855,310.77
Total Property	\$1,422,443.86
800 <u>Other Objects</u>	
810 Dues and Fees	48,987.38
Total Other Objects	\$48,987.38
Total 2000 Support Services	\$29,292,897.42

LEA : 124158503      Unionville-Chadds Ford SD

Printed 2/14/2023 9:28:38 AM

General Fund (10)				
2100 Support Services – Students	<u>Elementary</u>	<u>Secondary</u>	<u>Federal</u>	<u>Total</u>
100 <u>Personnel Services – Salaries</u>				
100 Personnel Services – Salaries	1,233,247.08	1,231,969.02	58,758.84	2,523,974.94
<b>Total Personnel Services – Salaries</b>	<b>\$1,233,247.08</b>	<b>\$1,231,969.02</b>	<b>\$58,758.84</b>	<b>\$2,523,974.94</b>
200 <u>Personnel Services – Employee Benefits</u>				
220 Social Security Contributions	88,500.76	91,832.60	3,890.53	184,223.89
230 PSERS Retirement Contributions	422,825.81	432,240.63	10,265.17	865,331.61
250 Unemployment Compensation	67.22	73.71		140.93
260 Workers' Compensation	7,581.55	7,619.81		15,201.36
270 Group Insurance – Self-Insurance	289,337.89	282,285.67	17,009.94	588,633.50
<b>Total Personnel Services – Employee Benefits</b>	<b>\$808,313.23</b>	<b>\$814,052.42</b>	<b>\$31,165.64</b>	<b>\$1,653,531.29</b>
300 <u>Purchased Professional and Technical Services</u>				
329 Professional Educational Services – Other	38,710.64	22,295.46		61,006.10
330 Other Professional Services			9,640.40	9,640.40
<b>Total Purchased Professional and Technical Services</b>	<b>\$38,710.64</b>	<b>\$22,295.46</b>	<b>\$9,640.40</b>	<b>\$70,646.50</b>
500 <u>Other Purchased Services</u>				
530 Communications	8.95	13.68		22.63
541 Advertising Related to Federal Grant Awards	1,040.00			1,040.00
550 Printing and Binding	380.59			380.59
580 Travel	441.92	2,740.00	359.60	4,521.22
<b>Total Other Purchased Services</b>	<b>\$1,871.46</b>	<b>\$2,753.68</b>	<b>\$359.60</b>	<b>\$5,964.44</b>
600 <u>Supplies</u>				
610 General Supplies	17,998.23	8,906.44		26,904.67
640 Books and Periodicals		905.38		1,443.22
<b>Total Supplies</b>	<b>\$17,998.23</b>	<b>\$9,811.82</b>		<b>\$28,347.89</b>
700 <u>Property</u>				
752 Capital Equipment – Original and Additional		44.12		44.12
<b>Total Property</b>		<b>\$44.12</b>		<b>\$44.12</b>
<b>Total 2100 Support Services – Students</b>	<b>\$2,100,140.64</b>	<b>\$2,080,926.52</b>	<b>\$99,924.48</b>	<b>\$4,282,509.18</b>

LEA : 124158503     Unionville-Chadds Ford SD

Printed 2/14/2023 9:28:38 AM

General Fund (10)

2110 Supervision of Student Services	Elementary	Secondary	Federal	Total
100 <u>Personnel Services – Salaries</u>				
100 Personnel Services – Salaries	151,224.54	150,945.06		302,169.60
<b>Total Personnel Services – Salaries</b>	<b>\$151,224.54</b>	<b>\$150,945.06</b>		<b>\$302,169.60</b>
200 <u>Personnel Services – Employee Benefits</u>				
220 Social Security Contributions	11,084.66	11,084.66		22,169.32
230 PSERS Retirement Contributions	52,066.56	52,066.56		104,133.12
250 Unemployment Compensation	8.29	8.29		16.58
260 Workers' Compensation	911.57	911.57		1,823.14
270 Group Insurance – Self-Insurance	44,205.03	44,205.03		88,410.06
<b>Total Personnel Services – Employee Benefits</b>	<b>\$108,276.11</b>	<b>\$108,276.11</b>		<b>\$216,552.22</b>
300 <u>Purchased Professional and Technical Services</u>				
329 Professional Educational Services – Other	38,143.12			38,143.12
<b>Total Purchased Professional and Technical Services</b>	<b>\$38,143.12</b>			<b>\$38,143.12</b>
500 <u>Other Purchased Services</u>				
530 Communications	8.95	13.68		22.63
541 Advertising Related to Federal Grant Awards	1,040.00			1,040.00
550 Printing and Binding	380.59			380.59
580 Travel	370.66	545.00		915.66
<b>Total Other Purchased Services</b>	<b>\$1,800.20</b>	<b>\$558.68</b>		<b>\$2,358.88</b>
700 <u>Property</u>				
752 Capital Equipment – Original and Additional		44.12		44.12
<b>Total Property</b>		<b>\$44.12</b>		<b>\$44.12</b>
<b>Total 2110 Supervision of Student Services</b>	<b>\$299,443.97</b>	<b>\$259,823.97</b>		<b>\$559,267.94</b>

LEA : 124158503      Unionville-Chadds Ford SD

Printed 2/14/2023 9:28:38 AM

General Fund (10)

2111 Supervision of Student Services – Head of Component	<u>Elementary</u>	<u>Secondary</u>	<u>Federal</u>	<u>Total</u>
<b>100 <u>Personnel Services – Salaries</u></b>				
100 Personnel Services – Salaries	151,224.54	150,945.06		302,169.60
<b>Total Personnel Services – Salaries</b>	<b>\$151,224.54</b>	<b>\$150,945.06</b>		<b>\$302,169.60</b>
<b>200 <u>Personnel Services – Employee Benefits</u></b>				
220 Social Security Contributions	11,084.66	11,084.66		22,169.32
230 PSERS Retirement Contributions	52,066.56	52,066.56		104,133.12
250 Unemployment Compensation	8.29	8.29		16.58
260 Workers' Compensation	911.57	911.57		1,823.14
270 Group Insurance – Self-Insurance	44,205.03	44,205.03		88,410.06
<b>Total Personnel Services – Employee Benefits</b>	<b>\$108,276.11</b>	<b>\$108,276.11</b>		<b>\$216,552.22</b>
<b>300 <u>Purchased Professional and Technical Services</u></b>				
329 Professional Educational Services – Other	38,143.12			38,143.12
<b>Total Purchased Professional and Technical Services</b>	<b>\$38,143.12</b>			<b>\$38,143.12</b>
<b>500 <u>Other Purchased Services</u></b>				
530 Communications	8.95	13.68		22.63
541 Advertising Related to Federal Grant Awards	1,040.00			1,040.00
550 Printing and Binding	380.59			380.59
580 Travel	370.66	545.00		915.66
<b>Total Other Purchased Services</b>	<b>\$1,800.20</b>	<b>\$558.68</b>		<b>\$2,358.88</b>
<b>700 <u>Property</u></b>				
752 Capital Equipment – Original and Additional		44.12		44.12
<b>Total Property</b>		<b>\$44.12</b>		<b>\$44.12</b>
<b>Total 2111 Supervision of Student Services – Head of Component</b>	<b>\$299,443.97</b>	<b>\$259,823.97</b>		<b>\$559,267.94</b>

LEA : 124158503     Unionville-Chadds Ford SD

Printed 2/14/2023 9:28:38 AM

General Fund (10)

2120 Guidance Services

	<u>Elementary</u>	<u>Secondary</u>	<u>Federal</u>	<u>Total</u>
<b>100 <u>Personnel Services – Salaries</u></b>				
100 Personnel Services – Salaries	591,280.88	1,078,671.96		1,669,952.84
<b>Total Personnel Services – Salaries</b>	<b>\$591,280.88</b>	<b>\$1,078,671.96</b>		<b>\$1,669,952.84</b>
<b>200 <u>Personnel Services – Employee Benefits</u></b>				
220 Social Security Contributions	45,056.79	76,718.32		121,775.11
230 PSERS Retirement Contributions	211,639.58	360,359.29		571,998.87
250 Unemployment Compensation	36.81	62.67		99.48
260 Workers' Compensation	3,724.33	6,341.43		10,065.76
270 Group Insurance – Self-Insurance	131,515.73	223,932.18		355,447.91
<b>Total Personnel Services – Employee Benefits</b>	<b>\$391,973.24</b>	<b>\$667,413.89</b>		<b>\$1,059,387.13</b>
<b>300 <u>Purchased Professional and Technical Services</u></b>				
329 Professional Educational Services – Other	567.52	12,725.46		13,292.98
330 Other Professional Services			9,640.40	9,640.40
<b>Total Purchased Professional and Technical Services</b>	<b>\$567.52</b>	<b>\$12,725.46</b>	<b>\$9,640.40</b>	<b>\$22,933.38</b>
<b>500 <u>Other Purchased Services</u></b>				
580 Travel			359.60	359.60
<b>Total Other Purchased Services</b>			<b>\$359.60</b>	<b>\$359.60</b>
<b>600 <u>Supplies</u></b>				
640 Books and Periodicals		905.38		905.38
<b>Total Supplies</b>		<b>\$905.38</b>		<b>\$905.38</b>
<b>Total 2120 Guidance Services</b>	<b>\$983,821.64</b>	<b>\$1,759,716.69</b>	<b>\$10,000.00</b>	<b>\$2,753,538.33</b>

LEA : 124158503     Unionville-Chadds Ford SD

Printed 2/14/2023 9:28:38 AM

General Fund (10)

2140 Psychological Services	Elementary	Secondary	Federal	Total
100 <u>Personnel Services – Salaries</u>				
100 Personnel Services – Salaries	490,741.66	2,352.00	58,758.84	551,852.50
<b>Total Personnel Services – Salaries</b>	<b>\$490,741.66</b>	<b>\$2,352.00</b>	<b>\$58,758.84</b>	<b>\$551,852.50</b>
200 <u>Personnel Services – Employee Benefits</u>				
220 Social Security Contributions	32,359.31	4,029.62	3,890.53	40,279.46
230 PSERS Retirement Contributions	159,119.67	19,814.78	10,265.17	189,199.62
250 Unemployment Compensation	22.12	2.75		24.87
260 Workers' Compensation	2,945.65	366.81		3,312.46
270 Group Insurance – Self-Insurance	113,617.13	14,148.46	17,009.94	144,775.53
<b>Total Personnel Services – Employee Benefits</b>	<b>\$308,063.88</b>	<b>\$38,362.42</b>	<b>\$31,165.64</b>	<b>\$377,591.94</b>
300 <u>Purchased Professional and Technical Services</u>				
329 Professional Educational Services – Other		9,570.00		9,570.00
<b>Total Purchased Professional and Technical Services</b>		<b>\$9,570.00</b>		<b>\$9,570.00</b>
500 <u>Other Purchased Services</u>				
580 Travel	71.26	2,195.00		2,266.26
<b>Total Other Purchased Services</b>	<b>\$71.26</b>	<b>\$2,195.00</b>		<b>\$2,266.26</b>
600 <u>Supplies</u>				
610 General Supplies	17,998.23	8,906.44		26,904.67
<b>Total Supplies</b>	<b>\$17,998.23</b>	<b>\$8,906.44</b>		<b>\$26,904.67</b>
<b>Total 2140 Psychological Services</b>	<b>\$816,875.03</b>	<b>\$61,385.86</b>	<b>\$89,924.48</b>	<b>\$968,185.37</b>

LEA : 124158503      Unionville-Chadds Ford SD

Printed 2/14/2023 9:28:38 AM

General Fund (10)

2160 Social Work Services	<u>Elementary</u>	<u>Secondary</u>	<u>Federal</u>	<u>Total</u>
500 <u>Other Purchased Services</u>				
580 Travel				979.70
Total Other Purchased Services				\$979.70
600 <u>Supplies</u>				
640 Books and Periodicals				537.84
Total Supplies				\$537.84
Total 2160 Social Work Services				\$1,517.54

LEA : 124158503      Unionville-Chadds Ford SD

Printed 2/14/2023 9:28:38 AM

General Fund (10)

2200 Support Services – Instructional Staff	Elementary	Secondary	Federal	Total
<b>100 Personnel Services – Salaries</b>				
100 Personnel Services – Salaries	1,135,352.95	917,505.55	40,267.82	2,093,126.32
<b>Total Personnel Services – Salaries</b>	<b>\$1,135,352.95</b>	<b>\$917,505.55</b>	<b>\$40,267.82</b>	<b>\$2,093,126.32</b>
<b>200 Personnel Services – Employee Benefits</b>				
220 Social Security Contributions	82,853.92	69,521.10		152,375.02
230 PSERS Retirement Contributions	389,179.23	326,552.68		715,731.91
240 Tuition Reimbursement	125,247.50	125,247.50		250,495.00
250 Unemployment Compensation	46.83	36.07		82.90
260 Workers' Compensation	6,826.99	5,729.53		12,556.52
270 Group Insurance – Self-Insurance	259,662.64	193,892.45		453,555.09
<b>Total Personnel Services – Employee Benefits</b>	<b>\$863,817.11</b>	<b>\$720,979.33</b>		<b>\$1,584,796.44</b>
<b>300 Purchased Professional and Technical Services</b>				
329 Professional Educational Services – Other	85,360.22	33,806.57	562.50	119,729.29
<b>Total Purchased Professional and Technical Services</b>	<b>\$85,360.22</b>	<b>\$33,806.57</b>	<b>\$562.50</b>	<b>\$119,729.29</b>
<b>400 Purchased Property Services</b>				
430 Repairs and Maintenance Services	284,030.17	132,992.24		417,022.41
<b>Total Purchased Property Services</b>	<b>\$284,030.17</b>	<b>\$132,992.24</b>		<b>\$417,022.41</b>
<b>500 Other Purchased Services</b>				
530 Communications	69,632.29	(18,970.17)		50,662.12
580 Travel	3,498.95	1,981.86	1,920.68	7,401.49
591 Services Purchased Locally	1,811.13			1,811.13
<b>Total Other Purchased Services</b>	<b>\$74,942.37</b>	<b>(\$16,988.31)</b>	<b>\$1,920.68</b>	<b>\$59,874.74</b>
<b>600 Supplies</b>				
610 General Supplies	71,014.28	52,323.18		123,337.46
630 Food	596.58	1,999.57		2,596.15
640 Books and Periodicals	16,813.04	38,876.32		55,689.36
<b>Total Supplies</b>	<b>\$88,423.90</b>	<b>\$93,199.07</b>		<b>\$181,622.97</b>
<b>700 Property</b>				
752 Capital Equipment – Original and Additional	195,329.73	259,349.86		454,679.59
756 Capitalized Technology Equipment – Original	38,378.64	35,920.18	28,286.75	102,585.57
762 Capitalized Equipment - Replacement	235,076.63	228,687.67		463,764.30
<b>Total Property</b>	<b>\$468,785.00</b>	<b>\$523,957.71</b>	<b>\$28,286.75</b>	<b>\$1,021,029.46</b>
<b>800 Other Objects</b>				
810 Dues and Fees	297.50	297.50		595.00
<b>Total Other Objects</b>	<b>\$297.50</b>	<b>\$297.50</b>		<b>\$595.00</b>
<b>Total 2200 Support Services – Instructional Staff</b>	<b>\$3,001,009.22</b>	<b>\$2,405,749.66</b>	<b>\$71,037.75</b>	<b>\$5,477,796.63</b>



LEA : 124158503     Unionville-Chadds Ford SD

Printed 2/14/2023 9:28:38 AM

General Fund (10)

2220 Technology Support Services	Elementary	Secondary	Federal	Total
100 <u>Personnel Services – Salaries</u>				
100 Personnel Services – Salaries	435,795.01	408,390.80		844,185.81
<b>Total Personnel Services – Salaries</b>	<b>\$435,795.01</b>	<b>\$408,390.80</b>		<b>\$844,185.81</b>
200 <u>Personnel Services – Employee Benefits</u>				
220 Social Security Contributions	31,986.26	29,525.78		61,512.04
230 PSERS Retirement Contributions	150,245.04	138,687.72		288,932.76
250 Unemployment Compensation	21.55	19.90		41.45
260 Workers' Compensation	2,643.80	2,440.43		5,084.23
270 Group Insurance – Self-Insurance	114,546.63	105,735.36		220,281.99
<b>Total Personnel Services – Employee Benefits</b>	<b>\$299,443.28</b>	<b>\$276,409.19</b>		<b>\$575,852.47</b>
400 <u>Purchased Property Services</u>				
430 Repairs and Maintenance Services	4,178.85			4,178.85
<b>Total Purchased Property Services</b>	<b>\$4,178.85</b>			<b>\$4,178.85</b>
600 <u>Supplies</u>				
610 General Supplies	15,890.77	28,559.65		44,450.42
<b>Total Supplies</b>	<b>\$15,890.77</b>	<b>\$28,559.65</b>		<b>\$44,450.42</b>
700 <u>Property</u>				
752 Capital Equipment – Original and Additional	13,213.37	15,384.98		28,598.35
762 Capitalized Equipment - Replacement	16,944.71			16,944.71
<b>Total Property</b>	<b>\$30,158.08</b>	<b>\$15,384.98</b>		<b>\$45,543.06</b>
<b>Total 2220 Technology Support Services</b>	<b>\$785,465.99</b>	<b>\$728,744.62</b>		<b>\$1,514,210.61</b>

LEA : 124158503     Unionville-Chadds Ford SD

Printed 2/14/2023 9:28:38 AM

General Fund (10)

2240 Computer-Assisted Instruction Support Services	<u>Elementary</u>	<u>Secondary</u>	<u>Federal</u>	<u>Total</u>
300 <u>Purchased Professional and Technical Services</u>				
329 Professional Educational Services – Other	84,610.22	21,258.20		105,868.42
Total Purchased Professional and Technical Services	\$84,610.22	\$21,258.20		\$105,868.42
400 <u>Purchased Property Services</u>				
430 Repairs and Maintenance Services	279,851.32	132,992.24		412,843.56
Total Purchased Property Services	\$279,851.32	\$132,992.24		\$412,843.56
500 <u>Other Purchased Services</u>				
530 Communications	69,192.18	(18,970.17)		50,222.01
580 Travel	2,474.01	268.80		2,742.81
Total Other Purchased Services	\$71,666.19	(\$18,701.37)		\$52,964.82
600 <u>Supplies</u>				
610 General Supplies	49,494.68	23,228.42		72,723.10
630 Food	494.94	1,022.17		1,517.11
Total Supplies	\$49,989.62	\$24,250.59		\$74,240.21
700 <u>Property</u>				
752 Capital Equipment – Original and Additional	182,116.36	242,968.93		425,085.29
762 Capitalized Equipment - Replacement	218,131.92	209,857.67		427,989.59
Total Property	\$400,248.28	\$452,826.60		\$853,074.88
Total 2240 Computer-Assisted Instruction Support Services	\$886,365.63	\$612,626.26		\$1,498,991.89

LEA : 124158503      Unionville-Chadds Ford SD

Printed 2/14/2023 9:28:38 AM

General Fund (10)

2250 School Library Services	Elementary	Secondary	Federal	Total
100 Personnel Services – Salaries				
100 Personnel Services – Salaries	395,119.74	177,134.49		572,254.23
Total Personnel Services – Salaries	\$395,119.74	\$177,134.49		\$572,254.23
200 Personnel Services – Employee Benefits				
220 Social Security Contributions	28,870.07	12,970.61		41,840.68
230 PSERS Retirement Contributions	135,607.73	60,925.21		196,532.94
250 Unemployment Compensation	17.16	7.71		24.87
260 Workers' Compensation	2,374.19	1,066.66		3,440.85
270 Group Insurance – Self-Insurance	106,302.05	47,758.89		154,060.94
Total Personnel Services – Employee Benefits	\$273,171.20	\$122,729.08		\$395,900.28
600 Supplies				
640 Books and Periodicals	16,813.04	38,876.32		55,689.36
Total Supplies	\$16,813.04	\$38,876.32		\$55,689.36
Total 2250 School Library Services	\$685,103.98	\$338,739.89		\$1,023,843.87

LEA : 124158503      Unionville-Chadds Ford SD

Printed 2/14/2023 9:28:38 AM

General Fund (10)

2260 Instruction and Curriculum Development Services	<u>Elementary</u>	<u>Secondary</u>	<u>Federal</u>	<u>Total</u>
100 <u>Personnel Services – Salaries</u>				
100 Personnel Services – Salaries	294,621.23	306,005.16		600,626.39
<b>Total Personnel Services – Salaries</b>	<b>\$294,621.23</b>	<b>\$306,005.16</b>		<b>\$600,626.39</b>
200 <u>Personnel Services – Employee Benefits</u>				
220 Social Security Contributions	21,266.93	22,134.97		43,401.90
230 PSERS Retirement Contributions	99,894.47	103,971.79		203,866.26
250 Unemployment Compensation	8.12	8.46		16.58
260 Workers' Compensation	1,748.92	1,820.31		3,569.23
270 Group Insurance – Self-Insurance	38,813.96	40,398.20		79,212.16
<b>Total Personnel Services – Employee Benefits</b>	<b>\$161,732.40</b>	<b>\$168,333.73</b>		<b>\$330,066.13</b>
300 <u>Purchased Professional and Technical Services</u>				
329 Professional Educational Services – Other		3,200.00		3,200.00
<b>Total Purchased Professional and Technical Services</b>		<b>\$3,200.00</b>		<b>\$3,200.00</b>
500 <u>Other Purchased Services</u>				
530 Communications	440.11			440.11
580 Travel	459.94	1,693.06		2,153.00
<b>Total Other Purchased Services</b>	<b>\$900.05</b>	<b>\$1,693.06</b>		<b>\$2,593.11</b>
600 <u>Supplies</u>				
610 General Supplies	312.51	535.11		847.62
630 Food	54.26	248.26		302.52
<b>Total Supplies</b>	<b>\$366.77</b>	<b>\$783.37</b>		<b>\$1,150.14</b>
700 <u>Property</u>				
752 Capital Equipment – Original and Additional		995.95		995.95
756 Capitalized Technology Equipment – Original	38,378.64	35,920.18	28,286.75	102,585.57
762 Capitalized Equipment - Replacement		18,830.00		18,830.00
<b>Total Property</b>	<b>\$38,378.64</b>	<b>\$55,746.13</b>	<b>\$28,286.75</b>	<b>\$122,411.52</b>
800 <u>Other Objects</u>				
810 Dues and Fees	297.50	297.50		595.00
<b>Total Other Objects</b>	<b>\$297.50</b>	<b>\$297.50</b>		<b>\$595.00</b>
<b>Total 2260 Instruction and Curriculum Development Services</b>	<b>\$496,296.59</b>	<b>\$536,058.95</b>	<b>\$28,286.75</b>	<b>\$1,060,642.29</b>

LEA : 124158503      Unionville-Chadds Ford SD

Printed 2/14/2023 9:28:38 AM

General Fund (10)

2270 Instructional Staff Professional Development Services	<u>Elementary</u>	<u>Secondary</u>	<u>Federal</u>	<u>Total</u>
100 <u>Personnel Services – Salaries</u>				
100 Personnel Services – Salaries	1,391.09	8,751.59	40,267.82	50,410.50
Total Personnel Services – Salaries	\$1,391.09	\$8,751.59	\$40,267.82	\$50,410.50
200 <u>Personnel Services – Employee Benefits</u>				
220 Social Security Contributions	112.41	3,634.52		3,746.93
230 PSERS Retirement Contributions	528.00	17,071.97		17,599.97
240 Tuition Reimbursement	125,247.50	125,247.50		250,495.00
260 Workers' Compensation	9.24	298.90		308.14
Total Personnel Services – Employee Benefits	\$125,897.15	\$146,252.89		\$272,150.04
300 <u>Purchased Professional and Technical Services</u>				
329 Professional Educational Services – Other	750.00	9,348.37	562.50	10,660.87
Total Purchased Professional and Technical Services	\$750.00	\$9,348.37	\$562.50	\$10,660.87
500 <u>Other Purchased Services</u>				
580 Travel	565.00	20.00	1,920.68	2,505.68
591 Services Purchased Locally	1,811.13			1,811.13
Total Other Purchased Services	\$2,376.13	\$20.00	\$1,920.68	\$4,316.81
600 <u>Supplies</u>				
630 Food		571.95		571.95
Total Supplies		\$571.95		\$571.95
Total 2270 Instructional Staff Professional Development Services	\$130,414.37	\$164,944.80	\$42,751.00	\$338,110.17

LEA : 124158503      Unionville-Chadds Ford SD

Printed 2/14/2023 9:28:38 AM

General Fund (10)

2290 Other Instructional Staff Services	<u>Elementary</u>	<u>Secondary</u>	<u>Federal</u>	<u>Total</u>
100 <u>Personnel Services – Salaries</u>				
100 Personnel Services – Salaries	8,425.88	17,223.51		25,649.39
<b>Total Personnel Services – Salaries</b>	<b>\$8,425.88</b>	<b>\$17,223.51</b>		<b>\$25,649.39</b>
200 <u>Personnel Services – Employee Benefits</u>				
220 Social Security Contributions	618.25	1,255.22		1,873.47
230 PSERS Retirement Contributions	2,903.99	5,895.99		8,799.98
260 Workers’ Compensation	50.84	103.23		154.07
<b>Total Personnel Services – Employee Benefits</b>	<b>\$3,573.08</b>	<b>\$7,254.44</b>		<b>\$10,827.52</b>
600 <u>Supplies</u>				
610 General Supplies	5,316.32			5,316.32
630 Food	47.38	157.19		204.57
<b>Total Supplies</b>	<b>\$5,363.70</b>	<b>\$157.19</b>		<b>\$5,520.89</b>
<b>Total 2290 Other Instructional Staff Services</b>	<b>\$17,362.66</b>	<b>\$24,635.14</b>		<b>\$41,997.80</b>

LEA : 124158503      Unionville-Chadds Ford SD

Printed 2/14/2023 9:28:38 AM

General Fund (10)

2300 Support Services – Administration	Elementary	Secondary	Federal	Total
<b>100 Personnel Services – Salaries</b>				
100 Personnel Services – Salaries	1,061,114.92	1,010,651.81		2,565,685.33
<b>Total Personnel Services – Salaries</b>	<b>\$1,061,114.92</b>	<b>\$1,010,651.81</b>		<b>\$2,565,685.33</b>
<b>200 Personnel Services – Employee Benefits</b>				
220 Social Security Contributions	75,163.35	72,215.76		182,479.01
230 PSERS Retirement Contributions	353,055.30	339,209.99		856,531.63
250 Unemployment Compensation	42.28	40.62		95.33
260 Workers' Compensation	6,194.29	5,951.38		15,047.28
270 Group Insurance – Self-Insurance	208,278.61	200,110.82		482,397.04
<b>Total Personnel Services – Employee Benefits</b>	<b>\$642,733.83</b>	<b>\$617,528.57</b>		<b>\$1,536,550.29</b>
<b>300 Purchased Professional and Technical Services</b>				
329 Professional Educational Services – Other	7,943.71	1,283.70		27,745.50
330 Other Professional Services			10,750.00	269,668.77
<b>Total Purchased Professional and Technical Services</b>	<b>\$7,943.71</b>	<b>\$1,283.70</b>	<b>\$10,750.00</b>	<b>\$297,414.27</b>
<b>400 Purchased Property Services</b>				
430 Repairs and Maintenance Services		21,496.91		21,496.91
<b>Total Purchased Property Services</b>		<b>\$21,496.91</b>		<b>\$21,496.91</b>
<b>500 Other Purchased Services</b>				
520 Insurance – General				7,242.13
530 Communications	24,782.49	10,077.78		34,860.27
549 Other Advertising/Public Relations				2,857.33
550 Printing and Binding	1,187.30	2,304.76		3,492.06
580 Travel				4,803.15
<b>Total Other Purchased Services</b>	<b>\$25,969.79</b>	<b>\$12,382.54</b>		<b>\$53,254.94</b>
<b>600 Supplies</b>				
610 General Supplies	8,229.30	12,709.18		24,428.26
630 Food	2,277.21	10,649.75		19,413.17
640 Books and Periodicals				2,977.50
<b>Total Supplies</b>	<b>\$10,506.51</b>	<b>\$23,358.93</b>		<b>\$46,818.93</b>
<b>800 Other Objects</b>				
810 Dues and Fees				23,295.57
<b>Total Other Objects</b>				<b>\$23,295.57</b>
<b>Total 2300 Support Services – Administration</b>	<b>\$1,748,268.76</b>	<b>\$1,686,702.46</b>	<b>\$10,750.00</b>	<b>\$4,544,516.24</b>

LEA : 124158503      Unionville-Chadds Ford SD

Printed 2/14/2023 9:28:38 AM

General Fund (10)				
2310 Board Services	<u>Elementary</u>	<u>Secondary</u>	<u>Federal</u>	<u>Total</u>
300 <u>Purchased Professional and Technical Services</u>				
329 Professional Educational Services – Other				9,822.50
Total Purchased Professional and Technical Services				\$9,822.50
500 <u>Other Purchased Services</u>				
520 Insurance – General				1,281.00
549 Other Advertising/Public Relations				2,857.33
Total Other Purchased Services				\$4,138.33
600 <u>Supplies</u>				
630 Food				995.15
Total Supplies				\$995.15
800 <u>Other Objects</u>				
810 Dues and Fees				19,275.57
Total Other Objects				\$19,275.57
Total 2310 Board Services				\$34,231.55



LEA : 124158503     Unionville-Chadds Ford SD

Printed 2/14/2023 9:28:38 AM

General Fund (10)

2330 Tax Assessment and Collection Services	<u>Elementary</u>	<u>Secondary</u>	<u>Federal</u>	<u>Total</u>
100 <u>Personnel Services – Salaries</u>				
100 Personnel Services – Salaries				1,681.00
Total Personnel Services – Salaries				\$1,681.00
200 <u>Personnel Services – Employee Benefits</u>				
220 Social Security Contributions				128.59
Total Personnel Services – Employee Benefits				\$128.59
300 <u>Purchased Professional and Technical Services</u>				
329 Professional Educational Services – Other				7,070.59
Total Purchased Professional and Technical Services				\$7,070.59
500 <u>Other Purchased Services</u>				
520 Insurance – General				5,961.13
Total Other Purchased Services				\$5,961.13
600 <u>Supplies</u>				
610 General Supplies				3,489.78
Total Supplies				\$3,489.78
Total 2330 Tax Assessment and Collection Services				\$18,331.09

LEA : 124158503     Unionville-Chadds Ford SD

Printed 2/14/2023 9:28:38 AM

General Fund (10)

2350 Legal and Accounting Services	<u>Elementary</u>	<u>Secondary</u>	<u>Federal</u>	<u>Total</u>
300 <u>Purchased Professional and Technical Services</u>				
330 Other Professional Services				211,550.56
Total Purchased Professional and Technical Services				\$211,550.56
Total 2350 Legal and Accounting Services				\$211,550.56

LEA : 124158503     Unionville-Chadds Ford SD

Printed 2/14/2023 9:28:38 AM

General Fund (10)				
2360 Office of the Superintendent / Executive Director Services	<u>Elementary</u>	<u>Secondary</u>	<u>Federal</u>	<u>Total</u>
100 <u>Personnel Services – Salaries</u>				
100 Personnel Services – Salaries				492,237.60
Total Personnel Services – Salaries				\$492,237.60
200 <u>Personnel Services – Employee Benefits</u>				
220 Social Security Contributions				34,971.31
230 PSERS Retirement Contributions				164,266.34
250 Unemployment Compensation				12.43
260 Workers' Compensation				2,901.61
270 Group Insurance – Self-Insurance				74,007.61
Total Personnel Services – Employee Benefits				\$276,159.30
300 <u>Purchased Professional and Technical Services</u>				
329 Professional Educational Services – Other				1,625.00
330 Other Professional Services			10,750.00	58,118.21
Total Purchased Professional and Technical Services			\$10,750.00	\$59,743.21
500 <u>Other Purchased Services</u>				
530 Communications	4,557.80	4,557.79		9,115.59
580 Travel				4,803.15
Total Other Purchased Services	\$4,557.80	\$4,557.79		\$13,918.74
600 <u>Supplies</u>				
630 Food				5,491.06
640 Books and Periodicals				2,977.50
Total Supplies				\$8,468.56
800 <u>Other Objects</u>				
810 Dues and Fees				4,020.00
Total Other Objects				\$4,020.00
Total 2360 Office of the Superintendent / Executive Director Services	\$4,557.80	\$4,557.79	\$10,750.00	\$854,547.41

LEA : 124158503      Unionville-Chadds Ford SD

Printed 2/14/2023 9:28:38 AM

General Fund (10)

2380 Office of the Principal Services	Elementary	Secondary	Federal	Total
<b>100 <u>Personnel Services – Salaries</u></b>				
100 Personnel Services – Salaries	1,061,114.92	1,010,651.81		2,071,766.73
<b>Total Personnel Services – Salaries</b>	<b>\$1,061,114.92</b>	<b>\$1,010,651.81</b>		<b>\$2,071,766.73</b>
<b>200 <u>Personnel Services – Employee Benefits</u></b>				
220 Social Security Contributions	75,163.35	72,215.76		147,379.11
230 PSERS Retirement Contributions	353,055.30	339,209.99		692,265.29
250 Unemployment Compensation	42.28	40.62		82.90
260 Workers' Compensation	6,194.29	5,951.38		12,145.67
270 Group Insurance – Self-Insurance	208,278.61	200,110.82		408,389.43
<b>Total Personnel Services – Employee Benefits</b>	<b>\$642,733.83</b>	<b>\$617,528.57</b>		<b>\$1,260,262.40</b>
<b>300 <u>Purchased Professional and Technical Services</u></b>				
329 Professional Educational Services – Other	7,943.71	1,283.70		9,227.41
<b>Total Purchased Professional and Technical Services</b>	<b>\$7,943.71</b>	<b>\$1,283.70</b>		<b>\$9,227.41</b>
<b>400 <u>Purchased Property Services</u></b>				
430 Repairs and Maintenance Services		21,496.91		21,496.91
<b>Total Purchased Property Services</b>		<b>\$21,496.91</b>		<b>\$21,496.91</b>
<b>500 <u>Other Purchased Services</u></b>				
530 Communications	20,224.69	5,519.99		25,744.68
550 Printing and Binding	1,187.30	2,304.76		3,492.06
<b>Total Other Purchased Services</b>	<b>\$21,411.99</b>	<b>\$7,824.75</b>		<b>\$29,236.74</b>
<b>600 <u>Supplies</u></b>				
610 General Supplies	8,229.30	12,709.18		20,938.48
630 Food	2,277.21	10,649.75		12,926.96
<b>Total Supplies</b>	<b>\$10,506.51</b>	<b>\$23,358.93</b>		<b>\$33,865.44</b>
<b>Total 2380 Office of the Principal Services</b>	<b>\$1,743,710.96</b>	<b>\$1,682,144.67</b>		<b>\$3,425,855.63</b>

LEA : 124158503     Unionville-Chadds Ford SD

Printed 2/14/2023 9:28:38 AM

<b>General Fund (10)</b>				
<b>2400 Support Services – Pupil Health</b>				
	<u>Elementary</u>	<u>Secondary</u>	<u>Federal</u>	<u>Total</u>
<b>100 <u>Personnel Services – Salaries</u></b>				
100 Personnel Services – Salaries			3,326.80	523,230.13
<b>Total Personnel Services – Salaries</b>			<b>\$3,326.80</b>	<b>\$523,230.13</b>
<b>200 <u>Personnel Services – Employee Benefits</u></b>				
220 Social Security Contributions				38,093.75
230 PSERS Retirement Contributions				178,932.98
250 Unemployment Compensation				29.01
260 Workers' Compensation				3,132.71
270 Group Insurance – Self-Insurance				157,202.07
<b>Total Personnel Services – Employee Benefits</b>				<b>\$377,390.52</b>
<b>300 <u>Purchased Professional and Technical Services</u></b>				
329 Professional Educational Services – Other				3,450.00
330 Other Professional Services				10,970.00
<b>Total Purchased Professional and Technical Services</b>				<b>\$14,420.00</b>
<b>400 <u>Purchased Property Services</u></b>				
410 Cleaning Services				30.00
430 Repairs and Maintenance Services				245.00
<b>Total Purchased Property Services</b>				<b>\$275.00</b>
<b>500 <u>Other Purchased Services</u></b>				
580 Travel				285.58
<b>Total Other Purchased Services</b>				<b>\$285.58</b>
<b>600 <u>Supplies</u></b>				
610 General Supplies				6,942.96
650 Supplies & Fees – Technology Related				11,510.00
<b>Total Supplies</b>				<b>\$18,452.96</b>
<b>700 <u>Property</u></b>				
762 Capitalized Equipment - Replacement				(1,349.00)
<b>Total Property</b>				<b>(\$1,349.00)</b>
<b>Total 2400 Support Services – Pupil Health</b>			<b>\$3,326.80</b>	<b>\$932,705.19</b>

LEA : 124158503     Unionville-Chadds Ford SD

Printed 2/14/2023 9:28:38 AM

General Fund (10)

2440 Nursing Services

	<u>Elementary</u>	<u>Secondary</u>	<u>Federal</u>	<u>Total</u>
<b>100 <u>Personnel Services – Salaries</u></b>				
100 Personnel Services – Salaries			3,326.80	523,230.13
<b>Total Personnel Services – Salaries</b>			<b>\$3,326.80</b>	<b>\$523,230.13</b>
<b>200 <u>Personnel Services – Employee Benefits</u></b>				
220 Social Security Contributions				38,093.75
230 PSERS Retirement Contributions				178,932.98
250 Unemployment Compensation				29.01
260 Workers' Compensation				3,132.71
270 Group Insurance – Self-Insurance				157,202.07
<b>Total Personnel Services – Employee Benefits</b>				<b>\$377,390.52</b>
<b>300 <u>Purchased Professional and Technical Services</u></b>				
329 Professional Educational Services – Other				3,450.00
330 Other Professional Services				10,970.00
<b>Total Purchased Professional and Technical Services</b>				<b>\$14,420.00</b>
<b>400 <u>Purchased Property Services</u></b>				
410 Cleaning Services				30.00
430 Repairs and Maintenance Services				245.00
<b>Total Purchased Property Services</b>				<b>\$275.00</b>
<b>500 <u>Other Purchased Services</u></b>				
580 Travel				285.58
<b>Total Other Purchased Services</b>				<b>\$285.58</b>
<b>600 <u>Supplies</u></b>				
610 General Supplies				6,942.96
650 Supplies & Fees – Technology Related				11,510.00
<b>Total Supplies</b>				<b>\$18,452.96</b>
<b>700 <u>Property</u></b>				
762 Capitalized Equipment - Replacement				(1,349.00)
<b>Total Property</b>				<b>(\$1,349.00)</b>
<b>Total 2440 Nursing Services</b>			<b>\$3,326.80</b>	<b>\$932,705.19</b>

LEA : 124158503      Unionville-Chadds Ford SD

Printed 2/14/2023 9:28:38 AM

General Fund (10)				
2500 Support Services – Business	Elementary	Secondary	Federal	Total
<b>100 Personnel Services – Salaries</b>				
100 Personnel Services – Salaries				463,611.17
<b>Total Personnel Services – Salaries</b>				<b>\$463,611.17</b>
<b>200 Personnel Services – Employee Benefits</b>				
220 Social Security Contributions				42,152.92
230 PSERS Retirement Contributions				197,999.60
250 Unemployment Compensation				20.72
260 Workers' Compensation				3,466.52
270 Group Insurance – Self-Insurance				97,038.78
<b>Total Personnel Services – Employee Benefits</b>				<b>\$340,678.54</b>
<b>300 Purchased Professional and Technical Services</b>				
329 Professional Educational Services – Other				70,821.85
<b>Total Purchased Professional and Technical Services</b>				<b>\$70,821.85</b>
<b>400 Purchased Property Services</b>				
430 Repairs and Maintenance Services				13,774.93
<b>Total Purchased Property Services</b>				<b>\$13,774.93</b>
<b>500 Other Purchased Services</b>				
530 Communications				28,228.07
580 Travel				1,624.29
591 Services Purchased Locally				37,867.81
<b>Total Other Purchased Services</b>				<b>\$67,720.17</b>
<b>600 Supplies</b>				
610 General Supplies				21,735.16
630 Food				8.98
640 Books and Periodicals				1,257.90
<b>Total Supplies</b>				<b>\$23,002.04</b>
<b>800 Other Objects</b>				
810 Dues and Fees				23,726.81
<b>Total Other Objects</b>				<b>\$23,726.81</b>
<b>Total 2500 Support Services – Business</b>				<b>\$1,003,335.51</b>

LEA : 124158503      Unionville-Chadds Ford SD

Printed 2/14/2023 9:28:38 AM

General Fund (10)

2510 Fiscal Services

	<u>Elementary</u>	<u>Secondary</u>	<u>Federal</u>	<u>Total</u>
<b>100 <u>Personnel Services – Salaries</u></b>				
100 Personnel Services – Salaries				463,611.17
<b>Total Personnel Services – Salaries</b>				<b>\$463,611.17</b>
<b>200 <u>Personnel Services – Employee Benefits</u></b>				
220 Social Security Contributions				42,152.92
230 PSERS Retirement Contributions				197,999.60
250 Unemployment Compensation				20.72
260 Workers' Compensation				3,466.52
270 Group Insurance – Self-Insurance				97,038.78
<b>Total Personnel Services – Employee Benefits</b>				<b>\$340,678.54</b>
<b>300 <u>Purchased Professional and Technical Services</u></b>				
329 Professional Educational Services – Other				70,821.85
<b>Total Purchased Professional and Technical Services</b>				<b>\$70,821.85</b>
<b>400 <u>Purchased Property Services</u></b>				
430 Repairs and Maintenance Services				13,774.93
<b>Total Purchased Property Services</b>				<b>\$13,774.93</b>
<b>500 <u>Other Purchased Services</u></b>				
530 Communications				28,228.07
580 Travel				1,624.29
<b>Total Other Purchased Services</b>				<b>\$29,852.36</b>
<b>600 <u>Supplies</u></b>				
610 General Supplies				21,735.16
630 Food				8.98
640 Books and Periodicals				1,257.90
<b>Total Supplies</b>				<b>\$23,002.04</b>
<b>800 <u>Other Objects</u></b>				
810 Dues and Fees				23,726.81
<b>Total Other Objects</b>				<b>\$23,726.81</b>
<b>Total 2510 Fiscal Services</b>				<b>\$965,467.70</b>



LEA : 124158503      Unionville-Chadds Ford SD

Printed 2/14/2023 9:28:38 AM

General Fund (10)				
2511 Supervision of Fiscal Services - Head of Component	<u>Elementary</u>	<u>Secondary</u>	<u>Federal</u>	<u>Total</u>
100 <u>Personnel Services – Salaries</u>				
100 Personnel Services – Salaries				294,780.33
Total Personnel Services – Salaries				\$294,780.33
200 <u>Personnel Services – Employee Benefits</u>				
220 Social Security Contributions				26,802.31
230 PSERS Retirement Contributions				139,010.11
250 Unemployment Compensation				13.17
260 Workers' Compensation				2,204.14
270 Group Insurance – Self-Insurance				61,700.68
Total Personnel Services – Employee Benefits				\$229,730.41
300 <u>Purchased Professional and Technical Services</u>				
329 Professional Educational Services – Other				17,525.66
Total Purchased Professional and Technical Services				\$17,525.66
400 <u>Purchased Property Services</u>				
430 Repairs and Maintenance Services				13,774.93
Total Purchased Property Services				\$13,774.93
500 <u>Other Purchased Services</u>				
530 Communications				28,228.07
580 Travel				1,250.10
Total Other Purchased Services				\$29,478.17
600 <u>Supplies</u>				
610 General Supplies				5,433.79
630 Food				8.98
640 Books and Periodicals				1,257.90
Total Supplies				\$6,700.67
800 <u>Other Objects</u>				
810 Dues and Fees				5,931.70
Total Other Objects				\$5,931.70
Total 2511 Supervision of Fiscal Services - Head of Component				\$597,921.87

LEA : 124158503      Unionville-Chadds Ford SD

Printed 2/14/2023 9:28:38 AM

General Fund (10)

2513 Receiving and Disbursing Funds Services	<u>Elementary</u>	<u>Secondary</u>	<u>Federal</u>	<u>Total</u>
<b>100 <u>Personnel Services – Salaries</u></b>				
100 Personnel Services – Salaries				41,306.04
<b>Total Personnel Services – Salaries</b>				<b>\$41,306.04</b>
<b>200 <u>Personnel Services – Employee Benefits</u></b>				
220 Social Security Contributions				3,755.67
230 PSERS Retirement Contributions				14,432.33
250 Unemployment Compensation				1.85
260 Workers' Compensation				308.85
270 Group Insurance – Self-Insurance				8,645.80
<b>Total Personnel Services – Employee Benefits</b>				<b>\$27,144.50</b>
<b>300 <u>Purchased Professional and Technical Services</u></b>				
329 Professional Educational Services – Other				1,094.00
<b>Total Purchased Professional and Technical Services</b>				<b>\$1,094.00</b>
<b>500 <u>Other Purchased Services</u></b>				
580 Travel				374.19
<b>Total Other Purchased Services</b>				<b>\$374.19</b>
<b>600 <u>Supplies</u></b>				
610 General Supplies				5,433.79
<b>Total Supplies</b>				<b>\$5,433.79</b>
<b>800 <u>Other Objects</u></b>				
810 Dues and Fees				5,931.70
<b>Total Other Objects</b>				<b>\$5,931.70</b>
<b>Total 2513 Receiving and Disbursing Funds Services</b>				<b>\$81,284.22</b>

LEA : 124158503      Unionville-Chadds Ford SD

Printed 2/14/2023 9:28:38 AM

General Fund (10)

2514 Payroll Services

	<u>Elementary</u>	<u>Secondary</u>	<u>Federal</u>	<u>Total</u>
<b>100 <u>Personnel Services – Salaries</u></b>				
100 Personnel Services – Salaries				59,529.60
<b>Total Personnel Services – Salaries</b>				<b>\$59,529.60</b>
<b>200 <u>Personnel Services – Employee Benefits</u></b>				
220 Social Security Contributions				5,412.61
230 PSERS Retirement Contributions				20,799.64
250 Unemployment Compensation				2.66
260 Workers' Compensation				445.12
270 Group Insurance – Self-Insurance				12,460.18
<b>Total Personnel Services – Employee Benefits</b>				<b>\$39,120.21</b>
<b>300 <u>Purchased Professional and Technical Services</u></b>				
329 Professional Educational Services – Other				31,402.19
<b>Total Purchased Professional and Technical Services</b>				<b>\$31,402.19</b>
<b>600 <u>Supplies</u></b>				
610 General Supplies				5,433.79
<b>Total Supplies</b>				<b>\$5,433.79</b>
<b>800 <u>Other Objects</u></b>				
810 Dues and Fees				5,931.70
<b>Total Other Objects</b>				<b>\$5,931.70</b>
<b>Total 2514 Payroll Services</b>				<b>\$141,417.49</b>

LEA : 124158503     Unionville-Chadds Ford SD

Printed 2/14/2023 9:28:38 AM

<b>General Fund (10)</b>				
<b>2515 Financial Accounting Services</b>	<b><u>Elementary</u></b>	<b><u>Secondary</u></b>	<b><u>Federal</u></b>	<b><u>Total</u></b>
<b>100 <u>Personnel Services – Salaries</u></b>				
100 Personnel Services – Salaries				67,995.20
<b>Total Personnel Services – Salaries</b>				<b>\$67,995.20</b>
<b>200 <u>Personnel Services – Employee Benefits</u></b>				
220 Social Security Contributions				6,182.33
230 PSERS Retirement Contributions				23,757.52
250 Unemployment Compensation				3.04
260 Workers' Compensation				508.41
270 Group Insurance – Self-Insurance				14,232.12
<b>Total Personnel Services – Employee Benefits</b>				<b>\$44,683.42</b>
<b>300 <u>Purchased Professional and Technical Services</u></b>				
329 Professional Educational Services – Other				20,800.00
<b>Total Purchased Professional and Technical Services</b>				<b>\$20,800.00</b>
<b>600 <u>Supplies</u></b>				
610 General Supplies				5,433.79
<b>Total Supplies</b>				<b>\$5,433.79</b>
<b>800 <u>Other Objects</u></b>				
810 Dues and Fees				5,931.71
<b>Total Other Objects</b>				<b>\$5,931.71</b>
<b>Total 2515 Financial Accounting Services</b>				<b>\$144,844.12</b>

LEA : 124158503      Unionville-Chadds Ford SD

Printed 2/14/2023 9:28:38 AM

General Fund (10)

2590 Other Support Services – Business	<u>Elementary</u>	<u>Secondary</u>	<u>Federal</u>	<u>Total</u>
500 <u>Other Purchased Services</u>				
591 Services Purchased Locally				37,867.81
Total Other Purchased Services				\$37,867.81
Total 2590 Other Support Services – Business				\$37,867.81

LEA : 124158503     Unionville-Chadds Ford SD

Printed 2/14/2023 9:28:38 AM

General Fund (10)

2600 Operation and Maintenance of Plant Services	Elementary	Secondary	Federal	Total
<b>100 <u>Personnel Services – Salaries</u></b>				
100 Personnel Services – Salaries				2,768,765.65
<b>Total Personnel Services – Salaries</b>				<b>\$2,768,765.65</b>
<b>200 <u>Personnel Services – Employee Benefits</u></b>				
220 Social Security Contributions				202,021.79
230 PSERS Retirement Contributions				948,931.45
250 Unemployment Compensation				194.81
260 Workers' Compensation				16,690.67
270 Group Insurance – Self-Insurance				867,932.70
<b>Total Personnel Services – Employee Benefits</b>				<b>\$2,035,771.42</b>
<b>300 <u>Purchased Professional and Technical Services</u></b>				
329 Professional Educational Services – Other				103,544.57
330 Other Professional Services				55,248.72
340 Technical Services				15,804.00
350 Security / Safety Services				1,348.96
<b>Total Purchased Professional and Technical Services</b>				<b>\$175,946.25</b>
<b>400 <u>Purchased Property Services</u></b>				
410 Cleaning Services				46,546.04
420 Utility Services				147,591.55
430 Repairs and Maintenance Services				221,333.22
<b>Total Purchased Property Services</b>				<b>\$415,470.81</b>
<b>500 <u>Other Purchased Services</u></b>				
521 Fire Insurance				153,999.00
523 General Property and Liability Insurance				115,610.00
529 Other Insurance				153,238.00
530 Communications				2,519.94
580 Travel				5,497.16
<b>Total Other Purchased Services</b>				<b>\$430,864.10</b>
<b>600 <u>Supplies</u></b>				
610 General Supplies	251,450.87	251,450.84	15,570.91	518,472.62
620 Energy				1,193,910.88
<b>Total Supplies</b>	<b>\$251,450.87</b>	<b>\$251,450.84</b>	<b>\$15,570.91</b>	<b>\$1,712,383.50</b>
<b>700 <u>Property</u></b>				
752 Capital Equipment – Original and Additional				9,823.81
762 Capitalized Equipment - Replacement				25,066.64
<b>Total Property</b>				<b>\$34,890.45</b>
<b>Total 2600 Operation and Maintenance of Plant Services</b>	<b>\$251,450.87</b>	<b>\$251,450.84</b>	<b>\$15,570.91</b>	<b>\$7,574,092.18</b>

LEA : 124158503      Unionville-Chadds Ford SD

Printed 2/14/2023 9:28:38 AM

General Fund (10)

2610 Supervision of Operation and Maintenance of Plant Services	<u>Elementary</u>	<u>Secondary</u>	<u>Federal</u>	<u>Total</u>
<b>100 <u>Personnel Services – Salaries</u></b>				
100 Personnel Services – Salaries				200,369.18
<b>Total Personnel Services – Salaries</b>				<b>\$200,369.18</b>
<b>200 <u>Personnel Services – Employee Benefits</u></b>				
220 Social Security Contributions				14,619.85
230 PSERS Retirement Contributions				68,671.98
250 Unemployment Compensation				14.10
260 Workers' Compensation				1,207.87
270 Group Insurance – Self-Insurance				62,810.29
<b>Total Personnel Services – Employee Benefits</b>				<b>\$147,324.09</b>
<b>300 <u>Purchased Professional and Technical Services</u></b>				
329 Professional Educational Services – Other				208.20
330 Other Professional Services				30,631.58
<b>Total Purchased Professional and Technical Services</b>				<b>\$30,839.78</b>
<b>500 <u>Other Purchased Services</u></b>				
530 Communications				2,519.94
580 Travel				1,856.86
<b>Total Other Purchased Services</b>				<b>\$4,376.80</b>
<b>Total 2610 Supervision of Operation and Maintenance of Plant Services</b>				<b>\$382,909.85</b>

LEA : 124158503      Unionville-Chadds Ford SD

Printed 2/14/2023 9:28:38 AM

General Fund (10)

2611 Supervision of Operation and Maintenance of Plant Services – Head of Component	<u>Elementary</u>	<u>Secondary</u>	<u>Federal</u>	<u>Total</u>
<b>100 <u>Personnel Services – Salaries</u></b>				
100 Personnel Services – Salaries				200,369.18
<b>Total Personnel Services – Salaries</b>				<b>\$200,369.18</b>
<b>200 <u>Personnel Services – Employee Benefits</u></b>				
220 Social Security Contributions				14,619.85
230 PSERS Retirement Contributions				68,671.98
250 Unemployment Compensation				14.10
260 Workers' Compensation				1,207.87
270 Group Insurance – Self-Insurance				62,810.29
<b>Total Personnel Services – Employee Benefits</b>				<b>\$147,324.09</b>
<b>300 <u>Purchased Professional and Technical Services</u></b>				
329 Professional Educational Services – Other				208.20
330 Other Professional Services				30,631.58
<b>Total Purchased Professional and Technical Services</b>				<b>\$30,839.78</b>
<b>500 <u>Other Purchased Services</u></b>				
530 Communications				2,519.94
580 Travel				1,856.86
<b>Total Other Purchased Services</b>				<b>\$4,376.80</b>
<b>Total 2611 Supervision of Operation and Maintenance of Plant Services – Head of Component</b>				<b>\$382,909.85</b>



LEA : 124158503      Unionville-Chadds Ford SD

Printed 2/14/2023 9:28:38 AM

<b>General Fund (10)</b>				
<b>2620 Operation of Buildings Services</b>	<b><u>Elementary</u></b>	<b><u>Secondary</u></b>	<b><u>Federal</u></b>	<b><u>Total</u></b>
<b>100 <u>Personnel Services – Salaries</u></b>				
100 Personnel Services – Salaries				2,245,132.43
<b>Total Personnel Services – Salaries</b>				<b>\$2,245,132.43</b>
<b>200 <u>Personnel Services – Employee Benefits</u></b>				
220 Social Security Contributions				163,815.12
230 PSERS Retirement Contributions				769,468.07
250 Unemployment Compensation				157.97
260 Workers' Compensation				13,534.10
270 Group Insurance – Self-Insurance				703,787.93
<b>Total Personnel Services – Employee Benefits</b>				<b>\$1,650,763.19</b>
<b>300 <u>Purchased Professional and Technical Services</u></b>				
329 Professional Educational Services – Other				102,946.37
330 Other Professional Services				24,617.14
340 Technical Services				15,804.00
<b>Total Purchased Professional and Technical Services</b>				<b>\$143,367.51</b>
<b>400 <u>Purchased Property Services</u></b>				
410 Cleaning Services				46,546.04
420 Utility Services				147,591.55
430 Repairs and Maintenance Services				221,333.22
<b>Total Purchased Property Services</b>				<b>\$415,470.81</b>
<b>500 <u>Other Purchased Services</u></b>				
521 Fire Insurance				153,999.00
523 General Property and Liability Insurance				115,610.00
529 Other Insurance				153,238.00
580 Travel				906.30
<b>Total Other Purchased Services</b>				<b>\$423,753.30</b>
<b>600 <u>Supplies</u></b>				
610 General Supplies	186,953.68	186,953.66	15,570.91	389,478.25
620 Energy				1,193,910.88
<b>Total Supplies</b>	<b>\$186,953.68</b>	<b>\$186,953.66</b>	<b>\$15,570.91</b>	<b>\$1,583,389.13</b>
<b>700 <u>Property</u></b>				
752 Capital Equipment – Original and Additional				1,559.50
762 Capitalized Equipment - Replacement				10,560.85
<b>Total Property</b>				<b>\$12,120.35</b>
<b>Total 2620 Operation of Buildings Services</b>	<b>\$186,953.68</b>	<b>\$186,953.66</b>	<b>\$15,570.91</b>	<b>\$6,473,996.72</b>

LEA : 124158503      Unionville-Chadds Ford SD

Printed 2/14/2023 9:28:38 AM

General Fund (10)

2630 Care and Upkeep of Grounds Services	<u>Elementary</u>	<u>Secondary</u>	<u>Federal</u>	<u>Total</u>
100 <u>Personnel Services – Salaries</u>				
100 Personnel Services – Salaries				323,264.04
Total Personnel Services – Salaries				\$323,264.04
200 <u>Personnel Services – Employee Benefits</u>				
220 Social Security Contributions				23,586.82
230 PSERS Retirement Contributions				110,791.40
250 Unemployment Compensation				22.74
260 Workers' Compensation				1,948.70
270 Group Insurance – Self-Insurance				101,334.48
Total Personnel Services – Employee Benefits				\$237,684.14
500 <u>Other Purchased Services</u>				
580 Travel				2,734.00
Total Other Purchased Services				\$2,734.00
600 <u>Supplies</u>				
610 General Supplies	56,261.28	56,261.28		112,522.56
Total Supplies	\$56,261.28	\$56,261.28		\$112,522.56
700 <u>Property</u>				
752 Capital Equipment – Original and Additional				8,264.31
762 Capitalized Equipment - Replacement				14,505.79
Total Property				\$22,770.10
Total 2630 Care and Upkeep of Grounds Services	\$56,261.28	\$56,261.28		\$698,974.84

LEA : 124158503     Unionville-Chadds Ford SD

Printed 2/14/2023 9:28:38 AM

General Fund (10)

2660 Safety and Security Services	<u>Elementary</u>	<u>Secondary</u>	<u>Federal</u>	<u>Total</u>
300 <u>Purchased Professional and Technical Services</u>				
329 Professional Educational Services – Other				390.00
350 Security / Safety Services				1,348.96
Total Purchased Professional and Technical Services				\$1,738.96
600 <u>Supplies</u>				
610 General Supplies	8,235.91	8,235.90		16,471.81
Total Supplies	\$8,235.91	\$8,235.90		\$16,471.81
Total 2660 Safety and Security Services	\$8,235.91	\$8,235.90		\$18,210.77

LEA : 124158503      Unionville-Chadds Ford SD

Printed 2/14/2023 9:28:38 AM

General Fund (10)				
2700 Student Transportation Services	<u>Elementary</u>	<u>Secondary</u>	<u>Federal</u>	<u>Total</u>
100 <u>Personnel Services – Salaries</u>				
100 Personnel Services – Salaries				1,781,945.35
Total Personnel Services – Salaries				\$1,781,945.35
200 <u>Personnel Services – Employee Benefits</u>				
220 Social Security Contributions				129,581.20
230 PSERS Retirement Contributions				608,665.46
250 Unemployment Compensation				232.11
260 Workers' Compensation				10,682.03
270 Group Insurance – Self-Insurance				927,363.88
Total Personnel Services – Employee Benefits				\$1,676,524.68
300 <u>Purchased Professional and Technical Services</u>				
329 Professional Educational Services – Other				813.99
330 Other Professional Services				16,964.18
340 Technical Services				(182.00)
Total Purchased Professional and Technical Services				\$17,596.17
400 <u>Purchased Property Services</u>				
430 Repairs and Maintenance Services				9,495.19
440 Rentals				7,273.43
Total Purchased Property Services				\$16,768.62
500 <u>Other Purchased Services</u>				
513 Contracted Carriers				468.00
516 Student Transportation Services From the IU				425.46
522 Automotive Liability Insurance				120,672.00
530 Communications				4,240.10
580 Travel				4,349.80
Total Other Purchased Services				\$130,155.36
600 <u>Supplies</u>				
610 General Supplies				124,007.86
620 Energy				202,713.40
630 Food				1,519.15
Total Supplies				\$328,240.41
700 <u>Property</u>				
762 Capitalized Equipment - Replacement				367,828.83
Total Property				\$367,828.83
Total 2700 Student Transportation Services				\$4,319,059.42

LEA : 124158503      Unionville-Chadds Ford SD

Printed 2/14/2023 9:28:38 AM

General Fund (10)

2710 Supervision of Student Transportation Services	<u>Elementary</u>	<u>Secondary</u>	<u>Federal</u>	<u>Total</u>
<b>100 <u>Personnel Services – Salaries</u></b>				
100 Personnel Services – Salaries				124,736.17
<b>Total Personnel Services – Salaries</b>				<b>\$124,736.17</b>
<b>200 <u>Personnel Services – Employee Benefits</u></b>				
220 Social Security Contributions				9,070.68
230 PSERS Retirement Contributions				42,606.58
250 Unemployment Compensation				16.25
260 Workers' Compensation				747.74
270 Group Insurance – Self-Insurance				64,915.47
<b>Total Personnel Services – Employee Benefits</b>				<b>\$117,356.72</b>
<b>500 <u>Other Purchased Services</u></b>				
522 Automotive Liability Insurance				120,672.00
530 Communications				4,240.10
580 Travel				4,349.80
<b>Total Other Purchased Services</b>				<b>\$129,261.90</b>
<b>600 <u>Supplies</u></b>				
630 Food				1,519.15
<b>Total Supplies</b>				<b>\$1,519.15</b>
<b>Total 2710 Supervision of Student Transportation Services</b>				<b>\$372,873.94</b>

LEA : 124158503     Unionville-Chadds Ford SD

Printed 2/14/2023 9:28:38 AM

General Fund (10)

2711 Supervision of Student Transportation Services – Head of Component	<u>Elementary</u>	<u>Secondary</u>	<u>Federal</u>	<u>Total</u>
100 <u>Personnel Services – Salaries</u>				
100 Personnel Services – Salaries				124,736.17
Total Personnel Services – Salaries				\$124,736.17
200 <u>Personnel Services – Employee Benefits</u>				
220 Social Security Contributions				9,070.68
230 PSERS Retirement Contributions				42,606.58
250 Unemployment Compensation				16.25
260 Workers' Compensation				747.74
270 Group Insurance – Self-Insurance				64,915.47
Total Personnel Services – Employee Benefits				\$117,356.72
500 <u>Other Purchased Services</u>				
522 Automotive Liability Insurance				120,672.00
530 Communications				4,240.10
580 Travel				4,349.80
Total Other Purchased Services				\$129,261.90
600 <u>Supplies</u>				
630 Food				1,519.15
Total Supplies				\$1,519.15
Total 2711 Supervision of Student Transportation Services – Head of Component				\$372,873.94

LEA : 124158503     Unionville-Chadds Ford SD

Printed 2/14/2023 9:28:38 AM

General Fund (10)

2720 Vehicle Operation Services	<u>Elementary</u>	<u>Secondary</u>	<u>Federal</u>	<u>Total</u>
100 <u>Personnel Services – Salaries</u>				
100 Personnel Services – Salaries				1,015,708.85
Total Personnel Services – Salaries				\$1,015,708.85
200 <u>Personnel Services – Employee Benefits</u>				
220 Social Security Contributions				73,861.29
230 PSERS Retirement Contributions				346,939.31
250 Unemployment Compensation				132.30
260 Workers' Compensation				6,088.76
270 Group Insurance – Self-Insurance				528,597.41
Total Personnel Services – Employee Benefits				\$955,619.07
300 <u>Purchased Professional and Technical Services</u>				
329 Professional Educational Services – Other				813.99
330 Other Professional Services				16,964.18
340 Technical Services				(182.00)
Total Purchased Professional and Technical Services				\$17,596.17
500 <u>Other Purchased Services</u>				
513 Contracted Carriers				468.00
516 Student Transportation Services From the IU				425.46
Total Other Purchased Services				\$893.46
Total 2720 Vehicle Operation Services				\$1,989,817.55

LEA : 124158503     Unionville-Chadds Ford SD

Printed 2/14/2023 9:28:38 AM

General Fund (10)

2730 Monitoring Services

	<u>Elementary</u>	<u>Secondary</u>	<u>Federal</u>	<u>Total</u>
<b>100 <u>Personnel Services – Salaries</u></b>				
100 Personnel Services – Salaries				35,638.91
<b>Total Personnel Services – Salaries</b>				<b>\$35,638.91</b>
<b>200 <u>Personnel Services – Employee Benefits</u></b>				
220 Social Security Contributions				2,591.62
230 PSERS Retirement Contributions				12,173.31
250 Unemployment Compensation				4.64
260 Workers' Compensation				213.64
270 Group Insurance – Self-Insurance				18,547.28
<b>Total Personnel Services – Employee Benefits</b>				<b>\$33,530.49</b>
<b>Total 2730 Monitoring Services</b>				<b>\$69,169.40</b>



LEA : 124158503     Unionville-Chadds Ford SD

Printed 2/14/2023 9:28:38 AM

General Fund (10)

2740 Vehicle Servicing and Maintenance Services

Elementary                      Secondary                      Federal                      Total

100 <u>Personnel Services – Salaries</u>				
100 Personnel Services – Salaries				142,555.63
<b>Total Personnel Services – Salaries</b>				<b>\$142,555.63</b>
200 <u>Personnel Services – Employee Benefits</u>				
220 Social Security Contributions				10,366.50
230 PSERS Retirement Contributions				48,693.24
250 Unemployment Compensation				18.57
260 Workers' Compensation				854.56
270 Group Insurance – Self-Insurance				74,189.11
<b>Total Personnel Services – Employee Benefits</b>				<b>\$134,121.98</b>
400 <u>Purchased Property Services</u>				
430 Repairs and Maintenance Services				9,495.19
440 Rentals				7,273.43
<b>Total Purchased Property Services</b>				<b>\$16,768.62</b>
600 <u>Supplies</u>				
610 General Supplies				124,007.86
620 Energy				202,713.40
<b>Total Supplies</b>				<b>\$326,721.26</b>
700 <u>Property</u>				
762 Capitalized Equipment - Replacement				367,828.83
<b>Total Property</b>				<b>\$367,828.83</b>
<b>Total 2740 Vehicle Servicing and Maintenance Services</b>				<b>\$987,996.32</b>

LEA : 124158503     Unionville-Chadds Ford SD

Printed 2/14/2023 9:28:38 AM

General Fund (10)

2750 Nonpublic Transportation				<u>Elementary</u>	<u>Secondary</u>	<u>Federal</u>	<u>Total</u>
100 <u>Personnel Services – Salaries</u>							
100 Personnel Services – Salaries							463,305.79
Total Personnel Services – Salaries							\$463,305.79
200 <u>Personnel Services – Employee Benefits</u>							
220 Social Security Contributions							33,691.11
230 PSERS Retirement Contributions							158,253.02
250 Unemployment Compensation							60.35
260 Workers' Compensation							2,777.33
270 Group Insurance – Self-Insurance							241,114.61
Total Personnel Services – Employee Benefits							\$435,896.42
Total 2750 Nonpublic Transportation							\$899,202.21

LEA : 124158503     Unionville-Chadds Ford SD

Printed 2/14/2023 9:28:38 AM

General Fund (10)

2800 Support Services – Central	<u>Elementary</u>	<u>Secondary</u>	<u>Federal</u>	<u>Total</u>
100 <u>Personnel Services – Salaries</u>				
100 Personnel Services – Salaries				654,657.47
Total Personnel Services – Salaries				\$654,657.47
200 <u>Personnel Services – Employee Benefits</u>				
220 Social Security Contributions				47,773.31
230 PSERS Retirement Contributions				224,399.56
240 Tuition Reimbursement				40,233.00
250 Unemployment Compensation				16.58
260 Workers' Compensation				2,978.64
270 Group Insurance – Self-Insurance				86,060.21
Total Personnel Services – Employee Benefits				\$401,461.30
300 <u>Purchased Professional and Technical Services</u>				
330 Other Professional Services				45,299.00
Total Purchased Professional and Technical Services				\$45,299.00
500 <u>Other Purchased Services</u>				
550 Printing and Binding				7,316.23
580 Travel				4,713.47
Total Other Purchased Services				\$12,029.70
600 <u>Supplies</u>				
610 General Supplies				3,462.39
640 Books and Periodicals				8.70
Total Supplies				\$3,471.09
800 <u>Other Objects</u>				
810 Dues and Fees				1,370.00
Total Other Objects				\$1,370.00
Total 2800 Support Services – Central				\$1,118,288.56

LEA : 124158503      Unionville-Chadds Ford SD

Printed 2/14/2023 9:28:38 AM

General Fund (10)

2810 Planning, Research, Development and Evaluation Services

Elementary                      Secondary                      Federal                      Total

100 <u>Personnel Services – Salaries</u>				
100 Personnel Services – Salaries				495,846.97
<b>Total Personnel Services – Salaries</b>				<b>\$495,846.97</b>
200 <u>Personnel Services – Employee Benefits</u>				
220 Social Security Contributions				36,220.29
230 PSERS Retirement Contributions				170,133.00
250 Unemployment Compensation				16.58
260 Workers' Compensation				2,978.64
270 Group Insurance – Self-Insurance				86,060.21
<b>Total Personnel Services – Employee Benefits</b>				<b>\$295,408.72</b>
500 <u>Other Purchased Services</u>				
580 Travel				311.20
<b>Total Other Purchased Services</b>				<b>\$311.20</b>
<b>Total 2810 Planning, Research, Development and Evaluation Services</b>				<b>\$791,566.89</b>

LEA : 124158503      Unionville-Chadds Ford SD

Printed 2/14/2023 9:28:38 AM

General Fund (10)				
2820 Information Services	<u>Elementary</u>	<u>Secondary</u>	<u>Federal</u>	<u>Total</u>
100 <u>Personnel Services – Salaries</u>				
100 Personnel Services – Salaries				158,810.50
Total Personnel Services – Salaries				\$158,810.50
200 <u>Personnel Services – Employee Benefits</u>				
220 Social Security Contributions				11,553.02
230 PSERS Retirement Contributions				54,266.56
Total Personnel Services – Employee Benefits				\$65,819.58
300 <u>Purchased Professional and Technical Services</u>				
330 Other Professional Services				45,299.00
Total Purchased Professional and Technical Services				\$45,299.00
500 <u>Other Purchased Services</u>				
550 Printing and Binding				7,316.23
580 Travel				4,402.27
Total Other Purchased Services				\$11,718.50
600 <u>Supplies</u>				
610 General Supplies				3,462.39
640 Books and Periodicals				8.70
Total Supplies				\$3,471.09
800 <u>Other Objects</u>				
810 Dues and Fees				1,370.00
Total Other Objects				\$1,370.00
Total 2820 Information Services				\$286,488.67

LEA : 124158503      Unionville-Chadds Ford SD

Printed 2/14/2023 9:28:38 AM

General Fund (10)

2823 Public Information Services	<u>Elementary</u>	<u>Secondary</u>	<u>Federal</u>	<u>Total</u>
100 <u>Personnel Services – Salaries</u>				
100 Personnel Services – Salaries				158,810.50
Total Personnel Services – Salaries				\$158,810.50
200 <u>Personnel Services – Employee Benefits</u>				
220 Social Security Contributions				11,553.02
230 PSERS Retirement Contributions				54,266.56
Total Personnel Services – Employee Benefits				\$65,819.58
300 <u>Purchased Professional and Technical Services</u>				
330 Other Professional Services				45,299.00
Total Purchased Professional and Technical Services				\$45,299.00
500 <u>Other Purchased Services</u>				
550 Printing and Binding				7,316.23
580 Travel				4,402.27
Total Other Purchased Services				\$11,718.50
600 <u>Supplies</u>				
610 General Supplies				3,462.39
640 Books and Periodicals				8.70
Total Supplies				\$3,471.09
800 <u>Other Objects</u>				
810 Dues and Fees				1,370.00
Total Other Objects				\$1,370.00
Total 2823 Public Information Services				\$286,488.67

LEA : 124158503     Unionville-Chadds Ford SD

Printed 2/14/2023 9:28:38 AM

General Fund (10)				
2830 Staff Services	<u>Elementary</u>	<u>Secondary</u>	<u>Federal</u>	<u>Total</u>
200 <u>Personnel Services – Employee Benefits</u>				
240 Tuition Reimbursement				40,233.00
Total Personnel Services – Employee Benefits				\$40,233.00
Total 2830 Staff Services				\$40,233.00

LEA : 124158503     Unionville-Chadds Ford SD

Printed 2/14/2023 9:28:38 AM

General Fund (10)

2834 Staff Development Services – Non-Instructional, Certified Staff Only	<u>Elementary</u>	<u>Secondary</u>	<u>Federal</u>	<u>Total</u>
200 <u>Personnel Services – Employee Benefits</u>				
240 Tuition Reimbursement				34,556.00
Total Personnel Services – Employee Benefits				\$34,556.00
Total 2834 Staff Development Services – Non-Instructional, Certified Staff Only				\$34,556.00



LEA : 124158503     Unionville-Chadds Ford SD

Printed 2/14/2023 9:28:38 AM

General Fund (10)

2836 Staff Development Services – Non-Instructional, Non-Certified Staff Only	<u>Elementary</u>	<u>Secondary</u>	<u>Federal</u>	<u>Total</u>
200 <u>Personnel Services – Employee Benefits</u>				
240 Tuition Reimbursement				5,677.00
Total Personnel Services – Employee Benefits				\$5,677.00
Total 2836 Staff Development Services – Non-Instructional, Non-Certified Staff Only				\$5,677.00

LEA : 124158503     Unionville-Chadds Ford SD

Printed 2/14/2023 9:28:38 AM

General Fund (10)

2900 Other Support Services	<u>Elementary</u>	<u>Secondary</u>	<u>Federal</u>	<u>Total</u>
500 <u>Other Purchased Services</u>				
595 IU Payments By Withholding				40,594.51
Total Other Purchased Services				\$40,594.51
Total 2900 Other Support Services				\$40,594.51

LEA : 124158503     Unionville-Chadds Ford SD

Printed 2/14/2023 9:28:38 AM

General Fund (10)

2910 Support Services Not Listed Elsewhere In the 2000 Series

Elementary                      Secondary                      Federal                      Total

500 <u>Other Purchased Services</u>				
595 IU Payments By Withholding				40,594.51
Total Other Purchased Services				\$40,594.51
Total 2910 Support Services Not Listed Elsewhere In the 2000 Series				\$40,594.51

LEA : 124158503      Unionville-Chadds Ford SD

Printed 2/14/2023 9:28:45 AM

<b>General Fund (10)</b>	
<b>3000 Operation of Non-Instructional Services</b>	<b><u>Total</u></b>
<b>100 <u>Personnel Services – Salaries</u></b>	
100 Personnel Services – Salaries	1,060,969.12
<b>Total Personnel Services – Salaries</b>	<b>\$1,060,969.12</b>
<b>200 <u>Personnel Services – Employee Benefits</u></b>	
220 Social Security Contributions	77,436.48
230 PSERS Retirement Contributions	363,732.61
250 Unemployment Compensation	20.72
260 Workers' Compensation	6,393.81
270 Group Insurance – Self-Insurance	47,645.27
<b>Total Personnel Services – Employee Benefits</b>	<b>\$495,228.89</b>
<b>300 <u>Purchased Professional and Technical Services</u></b>	
329 Professional Educational Services – Other	35,000.00
330 Other Professional Services	72,100.17
<b>Total Purchased Professional and Technical Services</b>	<b>\$107,100.17</b>
<b>400 <u>Purchased Property Services</u></b>	
430 Repairs and Maintenance Services	8,353.49
<b>Total Purchased Property Services</b>	<b>\$8,353.49</b>
<b>500 <u>Other Purchased Services</u></b>	
520 Insurance – General	12,400.00
580 Travel	13,584.38
<b>Total Other Purchased Services</b>	<b>\$25,984.38</b>
<b>600 <u>Supplies</u></b>	
610 General Supplies	89,113.79
<b>Total Supplies</b>	<b>\$89,113.79</b>
<b>700 <u>Property</u></b>	
752 Capital Equipment – Original and Additional	19,980.85
<b>Total Property</b>	<b>\$19,980.85</b>
<b>800 <u>Other Objects</u></b>	
810 Dues and Fees	20,078.13
<b>Total Other Objects</b>	<b>\$20,078.13</b>
<b>Total 3000 Operation of Non-Instructional Services</b>	<b>\$1,826,808.82</b>

LEA : 124158503     Unionville-Chadds Ford SD

Printed 2/14/2023 9:28:45 AM

General Fund (10)

3200 Student Activities

	<u>Elementary</u>	<u>Secondary</u>	<u>Federal</u>	<u>Total</u>
<b>100 <u>Personnel Services – Salaries</u></b>				
100 Personnel Services – Salaries				1,048,386.36
<b>Total Personnel Services – Salaries</b>				<b>\$1,048,386.36</b>
<b>200 <u>Personnel Services – Employee Benefits</u></b>				
220 Social Security Contributions				76,499.75
230 PSERS Retirement Contributions				359,332.62
250 Unemployment Compensation				20.72
260 Workers' Compensation				6,316.78
270 Group Insurance – Self-Insurance				47,645.27
<b>Total Personnel Services – Employee Benefits</b>				<b>\$489,815.14</b>
<b>300 <u>Purchased Professional and Technical Services</u></b>				
329 Professional Educational Services – Other				35,000.00
330 Other Professional Services				72,100.17
<b>Total Purchased Professional and Technical Services</b>				<b>\$107,100.17</b>
<b>400 <u>Purchased Property Services</u></b>				
430 Repairs and Maintenance Services				8,353.49
<b>Total Purchased Property Services</b>				<b>\$8,353.49</b>
<b>500 <u>Other Purchased Services</u></b>				
520 Insurance – General				12,400.00
580 Travel				13,584.38
<b>Total Other Purchased Services</b>				<b>\$25,984.38</b>
<b>600 <u>Supplies</u></b>				
610 General Supplies				89,113.79
<b>Total Supplies</b>				<b>\$89,113.79</b>
<b>700 <u>Property</u></b>				
752 Capital Equipment – Original and Additional				19,980.85
<b>Total Property</b>				<b>\$19,980.85</b>
<b>800 <u>Other Objects</u></b>				
810 Dues and Fees				20,078.13
<b>Total Other Objects</b>				<b>\$20,078.13</b>
<b>Total 3200 Student Activities</b>				<b>\$1,808,812.31</b>

LEA : 124158503     Unionville-Chadds Ford SD

Printed 2/14/2023 9:28:45 AM

General Fund (10)

3300 Community Services

Elementary                      Secondary                      Federal                      Total

100 <u>Personnel Services – Salaries</u>				
100 Personnel Services – Salaries				12,582.76
<b>Total Personnel Services – Salaries</b>				<b>\$12,582.76</b>
200 <u>Personnel Services – Employee Benefits</u>				
220 Social Security Contributions				936.73
230 PSERS Retirement Contributions				4,399.99
260 Workers’ Compensation				77.03
<b>Total Personnel Services – Employee Benefits</b>				<b>\$5,413.75</b>
<b>Total 3300 Community Services</b>				<b>\$17,996.51</b>

General Fund (10)

5000 Other Expenditures and Financing Uses

Total

800 <u>Other Objects</u>	
830 Interest	2,864,068.75
<b>Total Other Objects</b>	<b>\$2,864,068.75</b>
900 <u>Other Uses of Funds</u>	
910 Redemption of Principal	5,588,928.00
932 Capital Reserve Fund Transfers Applicable To Fund 32	764,467.00
<b>Total Other Uses of Funds</b>	<b>\$6,353,395.00</b>
<b>Total 5000 Other Expenditures and Financing Uses</b>	<b>\$9,217,463.75</b>

General Fund (10)

5100 Debt Service / Other Expenditures and Financing Uses	<u>Elementary</u>	<u>Secondary</u>	<u>Federal</u>	<u>Total</u>
800 <u>Other Objects</u>				
830 Interest				2,864,068.75
Total Other Objects				\$2,864,068.75
900 <u>Other Uses of Funds</u>				
910 Redemption of Principal				5,588,928.00
Total Other Uses of Funds				\$5,588,928.00
Total 5100 Debt Service / Other Expenditures and Financing Uses				\$8,452,996.75



LEA : 124158503     Unionville-Chadds Ford SD

Printed 2/14/2023 9:28:51 AM

General Fund (10)

5110 Debt Service	<u>Elementary</u>	<u>Secondary</u>	<u>Federal</u>	<u>Total</u>
800 <u>Other Objects</u>				
830 Interest				2,864,068.75
Total Other Objects				\$2,864,068.75
900 <u>Other Uses of Funds</u>				
910 Redemption of Principal				5,505,000.00
Total Other Uses of Funds				\$5,505,000.00
Total 5110 Debt Service				\$8,369,068.75

LEA : 124158503     Unionville-Chadds Ford SD

Printed 2/14/2023 9:28:51 AM

General Fund (10)

5140 Leases	<u>Elementary</u>	<u>Secondary</u>	<u>Federal</u>	<u>Total</u>
900 <u>Other Uses of Funds</u>				
910 Redemption of Principal				83,928.00
<b>Total Other Uses of Funds</b>				<b>\$83,928.00</b>
<b>Total 5140 Leases</b>				<b>\$83,928.00</b>

LEA : 124158503     Unionville-Chadds Ford SD

Printed 2/14/2023 9:28:51 AM

General Fund (10)

5200 Interfund Transfers – Out	<u>Elementary</u>	<u>Secondary</u>	<u>Federal</u>	<u>Total</u>
900 <u>Other Uses of Funds</u>				
932 Capital Reserve Fund Transfers Applicable To Fund 32				764,467.00
Total Other Uses of Funds				\$764,467.00
Total 5200 Interfund Transfers – Out				\$764,467.00

LEA : 124158503     Unionville-Chadds Ford SD

Printed 2/14/2023 9:28:51 AM

General Fund (10)

5230 Capital Projects Fund Transfers	<u>Elementary</u>	<u>Secondary</u>	<u>Federal</u>	<u>Total</u>
900 <u>Other Uses of Funds</u>				
932 Capital Reserve Fund Transfers Applicable To Fund 32				764,467.00
Total Other Uses of Funds				\$764,467.00
Total 5230 Capital Projects Fund Transfers				\$764,467.00

LEA : 124158503      Unionville-Chadds Ford SD

Printed 2/14/2023 9:28:47 AM

Capital Reserve Fund - § 1431 (32)

4000 Facilities Acquisition, Construction and Improvement Services

Total

300 Purchased Professional and Technical Services

330 Other Professional Services	33,937.83
---------------------------------	-----------

Total Purchased Professional and Technical Services	\$33,937.83
---	-------------

700 Property

762 Capitalized Equipment - Replacement	2,106,024.89
---	--------------

Total Property	\$2,106,024.89
----------------	----------------

Total 4000 Facilities Acquisition, Construction and Improvement Services	\$2,139,962.72
--	----------------

LEA : 124158503     Unionville-Chadds Ford SD

Printed 2/14/2023 9:28:47 AM

Capital Reserve Fund - § 1431 (32)

4600 Existing Building Improvement Services	<u>Elementary</u>	<u>Secondary</u>	<u>Federal</u>	<u>Total</u>
300 <u>Purchased Professional and Technical Services</u>				
330 Other Professional Services				33,937.83
Total Purchased Professional and Technical Services				\$33,937.83
700 <u>Property</u>				
762 Capitalized Equipment - Replacement				2,106,024.89
Total Property				\$2,106,024.89
Total 4600 Existing Building Improvement Services				\$2,139,962.72

LEA : 124158503     Unionville-Chadds Ford SD

Printed 2/14/2023 9:28:42 AM

Other Capital Projects Fund (39)

2000 Support Services

Total

800 Other Objects

810 Dues and Fees

200,281.79

Total Other Objects	\$200,281.79
Total 2000 Support Services	\$200,281.79

LEA : 124158503     Unionville-Chadds Ford SD

Printed 2/14/2023 9:28:42 AM

Other Capital Projects Fund (39)

2300 Support Services – Administration

Elementary

Secondary

Federal

Total

800 Other Objects

810 Dues and Fees

200,281.79

Total Other Objects				\$200,281.79
Total 2300 Support Services – Administration				\$200,281.79



LEA : 124158503      Unionville-Chadds Ford SD

Printed 2/14/2023 9:28:42 AM

Other Capital Projects Fund (39)

2390 Other Administration Services

<u>Elementary</u>	<u>Secondary</u>	<u>Federal</u>	<u>Total</u>
-------------------	------------------	----------------	--------------

800 Other Objects

810 Dues and Fees			200,281.79
-------------------	--	--	------------

<b>Total Other Objects</b>			<b>\$200,281.79</b>
----------------------------	--	--	---------------------

<b>Total 2390 Other Administration Services</b>			<b>\$200,281.79</b>
---	--	--	---------------------

LEA : 124158503      Unionville-Chadds Ford SD

Printed 2/14/2023 9:28:49 AM

Other Capital Projects Fund (39)

4000 Facilities Acquisition, Construction and Improvement Services

Total

300 Purchased Professional and Technical Services

330 Other Professional Services	9,835.70
---------------------------------	----------

Total Purchased Professional and Technical Services	\$9,835.70
---	------------

700 Property

762 Capitalized Equipment - Replacement	1,070,079.99
---	--------------

Total Property	\$1,070,079.99
----------------	----------------

Total 4000 Facilities Acquisition, Construction and Improvement Services	\$1,079,915.69
--	----------------

LEA : 124158503     Unionville-Chadds Ford SD

Printed 2/14/2023 9:28:49 AM

Other Capital Projects Fund (39)

4600 Existing Building Improvement Services	<u>Elementary</u>	<u>Secondary</u>	<u>Federal</u>	<u>Total</u>
300 <u>Purchased Professional and Technical Services</u>				
330 Other Professional Services				9,835.70
Total Purchased Professional and Technical Services				\$9,835.70
700 <u>Property</u>				
762 Capitalized Equipment - Replacement				1,070,079.99
Total Property				\$1,070,079.99
Total 4600 Existing Building Improvement Services				\$1,079,915.69

LEA : 124158503     Unionville-Chadds Ford SD

Printed 2/14/2023 9:28:53 AM

Other Capital Projects Fund (39)

5000 Other Expenditures and Financing Uses

Total

900 Other Uses of Funds

910 Redemption of Principal	2,506,068.75
-----------------------------	--------------

Total Other Uses of Funds	\$2,506,068.75
---------------------------	----------------

Total 5000 Other Expenditures and Financing Uses	\$2,506,068.75
--	----------------

Other Capital Projects Fund (39)

5100 Debt Service / Other Expenditures and Financing Uses	<u>Elementary</u>	<u>Secondary</u>	<u>Federal</u>	<u>Total</u>
900 <u>Other Uses of Funds</u>				
910 Redemption of Principal				2,506,068.75
Total Other Uses of Funds				\$2,506,068.75
Total 5100 Debt Service / Other Expenditures and Financing Uses				\$2,506,068.75

LEA : 124158503     Unionville-Chadds Ford SD

Printed 2/14/2023 9:28:53 AM

Other Capital Projects Fund (39)

5120 Debt Service – Refunded Bonds

<u>Elementary</u>	<u>Secondary</u>	<u>Federal</u>	<u>Total</u>
-------------------	------------------	----------------	--------------

900 Other Uses of Funds

910 Redemption of Principal			2,506,068.75
-----------------------------	--	--	--------------

<b>Total Other Uses of Funds</b>			<b>\$2,506,068.75</b>
----------------------------------	--	--	-----------------------

<b>Total 5120 Debt Service – Refunded Bonds</b>			<b>\$2,506,068.75</b>
---	--	--	-----------------------

LEA : 124158503     Unionville-Chadds Ford SD

Printed 2/14/2023 9:28:55 AM

	<u>General Fund(10)</u>	<u>Student Sponsored Activity Fund(21)</u>	<u>Public Purpose Trust(27)</u>	<u>Other Compt Approved (28)</u>	<u>Athletic / Activity(29)</u>
<b>1000 <u>Instruction</u></b>					
1100 Regular Programs - Elementary / Secondary	35,892,243.57				
1200 Special Programs - Elementary / Secondary	16,265,101.89				
1300 Vocational Education	840,223.27				
1400 Other Instructional Programs - Elementary / Secondary	437,699.73				
<b>Total Instruction</b>	<b>\$53,435,268.46</b>				
<b>2000 <u>Support Services</u></b>					
2100 Support Services - Students	4,282,509.18				
2200 Support Services - Instructional Staff	5,477,796.63				
2300 Support Services - Administration	4,544,516.24				
2400 Support Services - Pupil Health	932,705.19				
2500 Support Services - Business	1,003,335.51				
2600 Operation and Maintenance of Plant Services	7,574,092.18				
2700 Student Transportation Services	4,319,059.42				
2800 Support Services - Central	1,118,288.56				
2900 Other Support Services	40,594.51				
<b>Total Support Services</b>	<b>\$29,292,897.42</b>				
<b>3000 <u>Operation of Non-Instructional Services</u></b>					
3200 Student Activities	1,808,812.31				
3300 Community Services	17,996.51				
<b>Total Operation of Non-Instructional Services</b>	<b>\$1,826,808.82</b>				
<b>4000 <u>Facilities Acquisition, Construction and Improvement Services</u></b>					
4600 Existing Building Improvement Services					
<b>Total Facilities Acquisition, Construction and Improvement Services</b>					
<b>5000 <u>Other Expenditures and Financing Uses</u></b>					
5100 Debt Service / Other Expenditures and Financing Uses	8,452,996.75				
5200 Interfund Transfers - Out	764,467.00				
<b>Total Other Expenditures and Financing Uses</b>	<b>\$9,217,463.75</b>				
<b>TOTAL ACTUAL EXPENDITURES &amp; OTHER FINANCING USES</b>	<b>\$93,772,438.45</b>				

LEA : 124158503     Unionville-Chadds Ford SD

Printed 2/14/2023 9:28:55 AM

	<u>Capital Reserve (690.1850)(31)</u>	<u>Capital Reserve (1431)(32)</u>	<u>Other Capital Projects Fund(39)</u>	<u>Debt Service(40)</u>	<u>Permanent(90)</u>
<b>1000 <u>Instruction</u></b>					
1100 Regular Programs - Elementary / Secondary					
1200 Special Programs - Elementary / Secondary					
1300 Vocational Education					
1400 Other Instructional Programs - Elementary / Secondary					
<b>Total Instruction</b>					
<b>2000 <u>Support Services</u></b>					
2100 Support Services - Students					
2200 Support Services - Instructional Staff					
2300 Support Services - Administration			200,281.79		
2400 Support Services - Pupil Health					
2500 Support Services - Business					
2600 Operation and Maintenance of Plant Services					
2700 Student Transportation Services					
2800 Support Services - Central					
2900 Other Support Services					
<b>Total Support Services</b>			<b>\$200,281.79</b>		
<b>3000 <u>Operation of Non-Instructional Services</u></b>					
3200 Student Activities					
3300 Community Services					
<b>Total Operation of Non-Instructional Services</b>					
<b>4000 <u>Facilities Acquisition, Construction and Improvement Services</u></b>					
4600 Existing Building Improvement Services		2,139,962.72	1,079,915.69		
<b>Total Facilities Acquisition, Construction and Improvement Services</b>		<b>\$2,139,962.72</b>	<b>\$1,079,915.69</b>		
<b>5000 <u>Other Expenditures and Financing Uses</u></b>					
5100 Debt Service / Other Expenditures and Financing Uses			2,506,068.75		
5200 Interfund Transfers - Out					
<b>Total Other Expenditures and Financing Uses</b>			<b>\$2,506,068.75</b>		
<b>TOTAL ACTUAL EXPENDITURES &amp; OTHER FINANCING USES</b>		<b>\$2,139,962.72</b>	<b>\$3,786,266.23</b>		



LEA : 124158503     Unionville-Chadds Ford SD

Printed 2/14/2023 9:28:55 AM

	<u>Total</u>
<b>1000 <u>Instruction</u></b>	
1100 Regular Programs - Elementary / Secondary	35,892,243.57
1200 Special Programs - Elementary / Secondary	16,265,101.89
1300 Vocational Education	840,223.27
1400 Other Instructional Programs - Elementary / Secondary	437,699.73
<b>Total Instruction</b>	<b>\$53,435,268.46</b>
<b>2000 <u>Support Services</u></b>	
2100 Support Services - Students	4,282,509.18
2200 Support Services - Instructional Staff	5,477,796.63
2300 Support Services - Administration	4,744,798.03
2400 Support Services - Pupil Health	932,705.19
2500 Support Services - Business	1,003,335.51
2600 Operation and Maintenance of Plant Services	7,574,092.18
2700 Student Transportation Services	4,319,059.42
2800 Support Services - Central	1,118,288.56
2900 Other Support Services	40,594.51
<b>Total Support Services</b>	<b>\$29,493,179.21</b>
<b>3000 <u>Operation of Non-Instructional Services</u></b>	
3200 Student Activities	1,808,812.31
3300 Community Services	17,996.51
<b>Total Operation of Non-Instructional Services</b>	<b>\$1,826,808.82</b>
<b>4000 <u>Facilities Acquisition, Construction and Improvement Services</u></b>	
4600 Existing Building Improvement Services	3,219,878.41
<b>Total Facilities Acquisition, Construction and Improvement Services</b>	<b>\$3,219,878.41</b>
<b>5000 <u>Other Expenditures and Financing Uses</u></b>	
5100 Debt Service / Other Expenditures and Financing Uses	10,959,065.50
5200 Interfund Transfers - Out	764,467.00
<b>Total Other Expenditures and Financing Uses</b>	<b>\$11,723,532.50</b>
<b>TOTAL ACTUAL EXPENDITURES &amp; OTHER FINANCING USES</b>	<b>\$99,698,667.40</b>

LEA : 124158503      Unionville-Chadds Ford SD

Printed 2/14/2023 9:29:04 AM

PSERS Salary Data (Salary Data should relate to the General Fund only)

Amount	Description	Amount
	Total Salary Base for salaries subject to PSERS withholding	42,611,089.43
	Total Federally Funded salaries subject to PSERS withholding	795,592.55

Title I Expenditure Data

Amount	Description	Amount
	Expenditures Funded with Current Title I Funds	101,614.00
	Expenditures Funded with Carry over Title I Funds	
Total	Title I Expenditure Data	\$101,614.00

Title IV Revenue Data

Amount	Description	Amount
	Revenue from Title IV-A-1: Student Support and Academic Enrichment Grants	10,000.00
	Revenue from Title IV-B: 21st Century Community Learning Centers	

Title V Revenue Data

Amount	Description	Amount
	Revenue from Title V-B-2: Rural and Low-Income School Programs	
	Revenue from Title V-B-1: Small Rural School Achievement (Directly from the Federal Govt)	

1 . <u>Current Special Education Expenditures within &lt;b&gt;Function 1000.&lt;/b&gt;\r\nSee list of exclusions in the note below.</u>	18,058,567.50
2 . <u>Current Special Education Expenditures within &lt;b&gt;Function 2000.&lt;/b&gt;\r\nSee list of exclusions in the note below.</u>	5,655,524.76
3 . <u>Current Special Education Expenditures within &lt;b&gt;Sub-Function 2100.&lt;/b&gt;\r\nThis data should also be included in line 2 above.\r\nSee list of exclusions in the note below.</u>	1,971,550.91
4 . <u>Current Special Education Expenditures within &lt;b&gt;Sub-Function 2200.&lt;/b&gt;\r\nThis data should also be included in line 2 above.\r\nSee list of exclusions in the note below.</u>	740,056.37
5 . <u>Current Special Education Expenditures within &lt;b&gt;Sub-Function 2700.&lt;/b&gt;\r\nThis data should also be included in line 2 above.\r\nSee list of exclusions in the note below.</u>	479,343.51
6 . <u>Current Special Education Expenditures within &lt;b&gt;Sub-Function 3100.&lt;/b&gt;\r\nSee list of exclusions in the note below.</u>	
7 . <u>Current Special Education Expenditures within &lt;b&gt;Sub-Function 3200.&lt;/b&gt;\r\nSee list of exclusions in the note below.</u>	280,846.54

Note: The Current Special Education Expenditure amounts for each line should be calculated as follows:

- \* Include the total expenditures for special education costs from all funds for the function/sub-function requested
- \* Exclude data from sub-functions: 1243,1450,1500,1600,1807,2280,2450,2750,2990
- \* Exclude data from objects: 322,511,512,516,561,562,564,566,592,593,594,595,596,597,700,830,899

Benefits for Staff Relative to Collective Bargaining Agreements

	OBJECT	COVERED	NOT COVERED	TOTAL
10 General Fund				
	211 Medical Insurance			
	212 Dental Insurance			
	215 Eye Care Insurance			
	216 Prescription Insurance			
	271 Self-Insurance Medical Benefits	3,117,192.29	2,764,302.59	5,881,494.88
	272 Self-Insurance Dental Benefits	316,499.76	248,678.39	565,178.15
	275 Self-Insurance Eye Care Benefits	50,708.10	39,842.08	90,550.18
	276 Self-Insurance Prescription Benefits	931,109.38	825,700.77	1,756,810.15
	FUND TOTAL	\$4,415,509.53	\$3,878,523.83	\$8,294,033.36
50 Enterprise Fund	No Self Insurance data to report			
	211 Medical Insurance			
	212 Dental Insurance			
	215 Eye Care Insurance			
	216 Prescription Insurance			
	271 Self-Insurance Medical Benefits			
	272 Self-Insurance Dental Benefits			
	275 Self-Insurance Eye Care Benefits			
	276 Self-Insurance Prescription Benefits			
	FUND TOTAL			
60 Internal Service Fund	No Self Insurance data to report			
	211 Medical Insurance			
	212 Dental Insurance			
	215 Eye Care Insurance			
	216 Prescription Insurance			
	271 Self-Insurance Medical Benefits			
	272 Self-Insurance Dental Benefits			
	275 Self-Insurance Eye Care Benefits			
	276 Self-Insurance Prescription Benefits			
	FUND TOTAL			
Total of All Funds		\$4,415,509.53	\$3,878,523.83	\$8,294,033.36

LEA : 124158503     Unionville-Chadds Ford SD

Printed 2/14/2023 9:29:14 AM

Function	Special Education (Prior Year)	Nonspecial Education (Prior Year)	Total (Prior Year)	Special Education (Current Year)	Nonspecial Education (Current Year)	Total (Current Year)
2120 Guidance Services	818,334.79	1,519,764.45	2,338,099.24	841,685.72	1,563,130.61	2,404,816.33
2140 Psychological Services	831,809.21	43,782.68	875,591.89	919,776.10	48,409.27	968,185.37
2150 Speech Pathology and Audiology Services						
2160 Social Work Services						
2260 Instruction and Curriculum Development Services	265,671.67	1,062,688.74	1,328,360.41	212,128.46	848,513.83	1,060,642.29
2350 Legal and Accounting Services	48,109.75	103,135.19	151,244.94	66,611.50	144,939.06	211,550.56
2420 Medical Services						
2440 Nursing Services	196,155.71	588,464.00	784,619.71	233,176.30	699,528.89	932,705.19
2700 Student Transportation Services	446,591.35	3,847,556.25	4,294,147.60	449,182.18	3,869,877.24	4,319,059.42
Total	\$2,606,672.48	\$7,165,391.31	\$9,772,063.79	\$2,722,560.26	\$7,174,398.90	\$9,896,959.16

LEA : 124158503     Unionville-Chadds Ford SD

Printed 2/14/2023 9:29:19 AM

(PRINCIPAL AMOUNTS ONLY)

**GOVERNMENTAL FUNDS/ ACTIVITIES**

	Short-Term Borrowing	General Obligation Bonds/Notes	Authority Building Obligations	OLTD, Ext Term Fin, Leases	Other Post- Employment Benefits (OPEB)	Compensated Absences	Net Pension Liability	Total
1. Debt at Beginning of Fiscal Year		70,270,000.00		258,884.00	6,251,589.00	4,156,657.00	144,470,211.00	225,407,341.00
2. Additional Debt Incurred During Year		13,830,000.00			718,844.00			14,548,844.00
3. Retirements and Repayments		7,970,000.00		83,928.00	3,511,652.00	393,653.00	27,697,851.00	39,657,084.00
4. Debt at End of Fiscal Year		76,130,000.00		174,956.00	3,458,781.00	3,763,004.00	116,772,360.00	200,299,101.00
5. Accreted Interest at End Of Fiscal Year								
6. Total Debt and Accreted Interest		76,130,000.00		174,956.00	3,458,781.00	3,763,004.00	116,772,360.00	200,299,101.00
7. Current Portion P&I - Due within 1 year		9,044,038.19		83,928.00		37,622.00		9,165,588.19
8. Interest Paid during current fiscal year		2,864,068.75						2,864,068.75

(PRINCIPAL AMOUNTS ONLY)

**PROPRIETARY FUNDS**

	Short-Term Borrowing	General Obligation Bonds/Notes	Authority Building Obligations	OLTD, Ext Term Fin, Leases	Other Post- Employment Benefits (OPEB)	Compensated Absences	Net Pension Liability	Total
1. Debt at Beginning of Fiscal Year							883,364.00	883,364.00
2. Additional Debt Incurred During Year							751,885.00	751,885.00
3. Retirements and Repayments								
4. Debt at End of Fiscal Year							1,635,249.00	1,635,249.00
5. Accreted Interest at End Of Fiscal Year								
6. Total Debt and Accreted Interest							1,635,249.00	1,635,249.00
7. Current Portion P&I - Due within 1 year								
8. Interest Paid during current fiscal year								

LEA : 124158503     Unionville-Chadds Ford SD

Total Principal and Interest Payments Made by Your School - All Funds

Function	Fund		Principal (910)	Principal (920)	Interest (830)	Total (Principal +Interest)	Misc Other Uses (990)
5110	10	General Fund	5,505,000.00		2,864,068.75	8,369,068.75	
5110	20	Special Revenue Funds					
5110	30	Capital Projects Funds					
5110	40	Debt Service Fund					
5110	90	Permanent Fund					
5120	10	General Fund					
5120	20	Special Revenue Funds					
5120	30	Capital Projects Funds	2,506,068.75			2,506,068.75	
5120	40	Debt Service Fund					
5140	10	General Fund	83,928.00			83,928.00	
5140	20	Special Revenue Funds					
5140	30	Capital Projects Funds					
5140	40	Debt Service Fund					
5140	90	Permanent Fund					
Total Debt Payments - Governmental Funds			\$8,094,996.75		\$2,864,068.75	\$10,959,065.50	

Function	Fund		Principal (910)	Principal (920)	Interest (830)	Total (Principal +Interest)
5110	50	Enterprise Fund				
5110	60	Internal Service Fund				
5120	50	Enterprise Fund				
5120	60	Internal Service Fund				
5140	50	Enterprise Fund				
5140	60	Internal Service Fund				

Total Debt Payments - Proprietary Funds						
---	--	--	--	--	--	--

LEA : 124158503     Unionville-Chadds Ford SD

Printed 2/14/2023 9:29:19 AM

**Debt Details**  
**Governmental Funds/ Activities**

Debt Category	Debt Issue Date (MM/YYYY)	Principal Amounts Only				Current Portion Due Within One Year (Principal and Interest)	Interest Paid During Fiscal Year
		Debt at Beginning of Fiscal Year	Additions	Reductions / Repayments	Debt at End of Fiscal Year		
General Obligation Bonds/Notes – CIB	02/2022		11,385,000.00		11,385,000.00	598,093.33	
General Obligation Bonds/Notes – CIB	02/2022		2,445,000.00		2,445,000.00	1,592,119.86	
General Obligation Bonds/Notes – CIB	05/2019	8,165,000.00		510,000.00	7,655,000.00	788,175.00	278,575.00
General Obligation Bonds/Notes – CIB	05/2019	205,000.00		205,000.00			8,200.00
General Obligation Bonds/Notes – CIB	09/2016	57,000,000.00		2,355,000.00	54,645,000.00	6,065,650.00	2,440,975.00
General Obligation Bonds/Notes – CIB	02/2015	4,685,000.00		4,685,000.00			129,868.75
General Obligation Bonds/Notes – CIB	09/2010	215,000.00		215,000.00			6,450.00
Compensated Absences		4,156,657.00		393,653.00	3,763,004.00	37,622.00	
Other Post-Employment Benefits (OPEB)		6,251,589.00	718,844.00	3,511,652.00	3,458,781.00		
Net Pension Liability		144,470,211.00		27,697,851.00	116,772,360.00		
Leases		258,884.00		83,928.00	174,956.00	83,928.00	
<b>Totals for Debt Entered:</b>		<b>\$225,407,341.00</b>	<b>\$14,548,844.00</b>	<b>\$39,657,084.00</b>	<b>\$200,299,101.00</b>	<b>\$9,165,588.19</b>	<b>\$2,864,068.75</b>

**Bond Details**  
**Proprietary Funds**

Debt Category	Debt Issue Date (MM/YYYY)	Principal Amounts Only				Current Portion Due Within One Year (Principal and Interest)	Interest Paid During Fiscal Year
		Debt at Beginning of Fiscal Year	Additions	Reductions / Repayments	Debt at End of Fiscal Year		
Net Pension Liability		883,364.00	751,885.00		1,635,249.00		
<b>Totals for Debt Entered:</b>		<b>\$883,364.00</b>	<b>\$751,885.00</b>		<b>\$1,635,249.00</b>		



LEA : 124158503     Unionville-Chadds Ford SD

**General Fund (10)**

Section 1: Tuition/Purchased Services as Reported within Expenditure Detail	Amount
Tuition Reported in General Fund Expenditures 1000-560	2,126,702.87
Purchased Services in General Fund Expenditures 1000-594 and 1000-597	
<b>Section 1 Total</b>	<b>\$2,126,702.87</b>

Section 2: Tuition Paid to Institution Types During Fiscal Year	Tuition Paid For Nonspecial Education	Tuition Paid For Special Education	Total
1 1306 Institutions			
2 Institutionalized Children's Programs			
3 Juveniles Incarcerated in Adult Facilities			
4 Residential Treatment Facilities			
5 Other Local Education Agencies	109,896.07	107,797.86	217,693.93
6 Brick and Mortar Charter Schools	28,232.72	30,995.12	59,227.84
7 Cyber Charter Schools	442,312.59	175,639.01	617,951.60
8 Career and Technology Centers	830,106.27		830,106.27
9 Approved Private Schools		90,672.32	90,672.32
10 PA Chartered Schools for the Deaf and Blind			
11 Private Residential Rehabilitative Institutions			
12 Juvenile Detention Centers	311,050.91		311,050.91
13 Special Program Jointures			
14 Other Tuition Not Included Elsewhere In This Section			
<b>Section 2 Total</b>	<b>\$1,721,598.56</b>	<b>\$405,104.31</b>	<b>\$2,126,702.87</b>

1 .	<u>Student Transportation Services for Educational Field Trips</u>	
2 .	<u>Student Transportation Services for Student Activities</u>	27,378.60
3 .	<u>Rental of Vehicles for Student Transportation Services</u>	
4 .	<u>Capital Reserve Funds</u>	

Include only district-owned transportation expenditures paid from State or local money.  
DO NOT include federal expenditures or payments to contract service providers.  
Contracted transportation services should not be recorded on this schedule.

LEA : 124158503      Unionville-Chadds Ford SD

Printed 2/14/2023 9:29:31 AM

Food Service / Cafeteria Operations Fund (51)

3000 Operation of Non-Instructional Services		<u>Total</u>
100 <u>Personnel Services – Salaries</u>		
100 Personnel Services – Salaries	594,153.55	
Total Personnel Services – Salaries		\$594,153.55
200 <u>Personnel Services – Employee Benefits</u>		
220 Social Security Contributions	44,990.79	
230 PSERS Retirement Contributions	1,091,384.32	
270 Group Insurance – Self-Insurance	171,282.92	
Total Personnel Services – Employee Benefits		\$1,307,658.03
600 <u>Supplies</u>		
610 General Supplies	851,233.00	
Total Supplies		\$851,233.00
700 <u>Property</u>		
740 Depreciation	71,897.87	
Total Property		\$71,897.87
Total 3000 Operation of Non-Instructional Services		\$2,824,942.45

LEA : 124158503      Unionville-Chadds Ford SD

Printed 2/14/2023 9:29:31 AM

Food Service / Cafeteria Operations Fund (51)

3100 Food Services	<u>Elementary</u>	<u>Secondary</u>	<u>Federal</u>	<u>Total</u>
100 <u>Personnel Services – Salaries</u>				
100 Personnel Services – Salaries				594,153.55
Total Personnel Services – Salaries				\$594,153.55
200 <u>Personnel Services – Employee Benefits</u>				
220 Social Security Contributions				44,990.79
230 PSERS Retirement Contributions				1,091,384.32
270 Group Insurance – Self-Insurance				171,282.92
Total Personnel Services – Employee Benefits				\$1,307,658.03
600 <u>Supplies</u>				
610 General Supplies				851,233.00
Total Supplies				\$851,233.00
700 <u>Property</u>				
740 Depreciation				71,897.87
Total Property				\$71,897.87
Total 3100 Food Services				\$2,824,942.45

LEA : 124158503      Unionville-Chadds Ford SD

Printed 2/14/2023 9:29:28 AM

Internal Service Fund (60)

2000 Support Services

Total

200 Personnel Services – Employee Benefits

270 Group Insurance – Self-Insurance	9,485,887.00
--------------------------------------	--------------

<b>Total Personnel Services – Employee Benefits</b>	<b>\$9,485,887.00</b>
---	-----------------------

300 Purchased Professional and Technical Services

330 Other Professional Services	8,146.00
---------------------------------	----------

<b>Total Purchased Professional and Technical Services</b>	<b>\$8,146.00</b>
--	-------------------

<b>Total 2000 Support Services</b>	<b>\$9,494,033.00</b>
------------------------------------	-----------------------

LEA : 124158503      Unionville-Chadds Ford SD

Printed 2/14/2023 9:29:28 AM

Internal Service Fund (60)

2800 Support Services – Central

Elementary                      Secondary                      Federal                      Total

200 <u>Personnel Services – Employee Benefits</u>				
270 Group Insurance – Self-Insurance				9,485,887.00
<b>Total Personnel Services – Employee Benefits</b>				<b>\$9,485,887.00</b>
300 <u>Purchased Professional and Technical Services</u>				
330 Other Professional Services				8,146.00
<b>Total Purchased Professional and Technical Services</b>				<b>\$8,146.00</b>
<b>Total 2800 Support Services – Central</b>				<b>\$9,494,033.00</b>

LEA : 124158503      Unionville-Chadds Ford SD

Printed 2/14/2023 9:29:28 AM

Internal Service Fund (60)

2830 Staff Services

Elementary                      Secondary                      Federal                      Total

200 <u>Personnel Services – Employee Benefits</u>				
270 Group Insurance – Self-Insurance				9,485,887.00
<b>Total Personnel Services – Employee Benefits</b>				<b>\$9,485,887.00</b>
300 <u>Purchased Professional and Technical Services</u>				
330 Other Professional Services				8,146.00
<b>Total Purchased Professional and Technical Services</b>				<b>\$8,146.00</b>
<b>Total 2830 Staff Services</b>				<b>\$9,494,033.00</b>

LEA : 124158503      Unionville-Chadds Ford SD

Printed 2/14/2023 9:29:28 AM

Internal Service Fund (60)

2835 Health Services

Elementary                      Secondary                      Federal                      Total

200 <u>Personnel Services – Employee Benefits</u>				
270 Group Insurance – Self-Insurance				9,485,887.00
<b>Total Personnel Services – Employee Benefits</b>				<b>\$9,485,887.00</b>
300 <u>Purchased Professional and Technical Services</u>				
330 Other Professional Services				8,146.00
<b>Total Purchased Professional and Technical Services</b>				<b>\$8,146.00</b>
<b>Total 2835 Health Services</b>				<b>\$9,494,033.00</b>



	<u>Food Service(51)</u>	<u>Child Care Operations(52)</u>	<u>Other Enterprise(58)</u>	<u>Internal Service(60)</u>	<u>Total</u>
<b>2000 <u>Support Services</u></b>					
2800 Support Services - Central				9,494,033.00	9,494,033.00
<b>Total Support Services</b>				<b>\$9,494,033.00</b>	<b>\$9,494,033.00</b>
<b>3000 <u>Operation of Non-Instructional Services</u></b>					
3100 Food Services	2,824,942.45				2,824,942.45
<b>Total Operation of Non-Instructional Services</b>	<b>\$2,824,942.45</b>				<b>\$2,824,942.45</b>
<b>TOTAL ACTUAL EXPENDITURES &amp; OTHER FINANCING USES</b>	<b>\$2,824,942.45</b>			<b>\$9,494,033.00</b>	<b>\$12,318,975.45</b>

LEA : 124158503     Unionville-Chadds Ford SD

Printed 2/14/2023 9:29:42 AM

Fund	School	School Number	Local Personnel	Local Nonpersonnel	State Personnel	State Nonpersonnel	Federal Personnel	Federal Nonpersonnel	Total	Explanation
10										
	Chadds Ford El Sch	1441	7,198,253.51	705,637.58	1,580,104.43	154,896.05	156,402.99	4,864.08	9,800,158.64	
	Charles F Patton MS	6719	9,930,327.43	1,556,426.01	2,179,827.97	341,654.49	96,120.85	13,489.17	14,117,845.92	
	Hillendale El Sch	7214	7,879,353.44	733,436.76	1,729,614.17	160,998.31	44,358.44	5,350.10	10,553,111.22	
	Pocopson El Sch	7736	10,754,235.33	1,026,110.84	2,360,685.81	225,243.84	248,149.53	6,955.13	14,621,380.48	
	Unionville El Sch	1442	7,457,802.78	759,562.59	1,637,078.66	166,733.26	143,057.28	5,152.18	10,169,386.75	
	Unionville HS	1443	12,912,176.15	2,301,029.18	2,834,380.13	505,103.97	301,871.52	28,190.34	18,882,751.29	
Total			56,132,148.64	7,082,202.96	12,321,691.17	1,554,629.92	989,960.61	64,001.00	78,144,634.30	

	<u>Nonspecial Education</u>	<u>Special Education</u>
<b>1000 <u>Instruction</u></b>		
1100 Regular Programs - Elementary / Secondary	35,209.00	78,369.00
<b>Total Instruction</b>	<b>\$35,209.00</b>	<b>\$78,369.00</b>
<b>3000 <u>Operation of Non-Instructional Services</u></b>		
3200 Student Activities	129.00	287.00
<b>Total Operation of Non-Instructional Services</b>	<b>\$129.00</b>	<b>\$287.00</b>
<b>5000 <u>Other Expenditures and Financing Uses</u></b>		
5100 Debt Service / Other Expenditures and Financing Uses	2,874.00	6,397.00
<b>Total Other Expenditures and Financing Uses</b>	<b>\$2,874.00</b>	<b>\$6,397.00</b>
<b>TOTAL ACTUAL EXPENDITURES &amp; OTHER FINANCING USES</b>	<b>\$38,212.00</b>	<b>\$85,053.00</b>

LEA : 124158503     Unionville-Chadds Ford SD

Printed 2/14/2023 9:29:46 AM

1000 Instruction

100 <u>Personnel Services - Salaries</u>		
100 Personnel Services - Salaries	22,715.00	50,558.00
<b>Total Personnel Services - Salaries</b>	<b>\$22,715.00</b>	<b>\$50,558.00</b>
200 <u>Personnel Services - Employee Benefits</u>		
220 Social Security Contributions	1,715.00	3,816.00
230 PSERS Retirement Contributions	7,981.00	17,765.00
250 Unemployment Compensation	71.00	157.00
260 Workers' Compensation	214.00	475.00
270 Group Insurance - Self-Insurance	1,217.00	2,711.00
<b>Total Personnel Services - Employee Benefits</b>	<b>\$11,198.00</b>	<b>\$24,924.00</b>
300 <u>Purchased Professional and Technical Services</u>		
390 Other Purchased Professional and Technical Services	76.00	169.00
<b>Total Purchased Professional and Technical Services</b>	<b>\$76.00</b>	<b>\$169.00</b>
400 <u>Purchased Property Services</u>		
490 Other Purchased Property Services	579.00	1,290.00
<b>Total Purchased Property Services</b>	<b>\$579.00</b>	<b>\$1,290.00</b>
500 <u>Other Purchased Services</u>		
599 Other Miscellaneous Purchased Services	548.00	1,220.00
<b>Total Other Purchased Services</b>	<b>\$548.00</b>	<b>\$1,220.00</b>
600 <u>Supplies</u>		
610 General Supplies	93.00	208.00
<b>Total Supplies</b>	<b>\$93.00</b>	<b>\$208.00</b>
<b>Total 1000 Instruction</b>	<b>\$35,209.00</b>	<b>\$78,369.00</b>

LEA : 124158503     Unionville-Chadds Ford SD

Printed 2/14/2023 9:29:46 AM

1100 Regular Programs - Elementary / Secondary

	<u>Nonspecial Education</u>	<u>Special Education</u>
<b>100 <u>Personnel Services - Salaries</u></b>		
100 Personnel Services - Salaries	22,715.00	50,558.00
<b>Total Personnel Services - Salaries</b>	<b>\$22,715.00</b>	<b>\$50,558.00</b>
<b>200 <u>Personnel Services - Employee Benefits</u></b>		
220 Social Security Contributions	1,715.00	3,816.00
230 PSERS Retirement Contributions	7,981.00	17,765.00
250 Unemployment Compensation	71.00	157.00
260 Workers' Compensation	214.00	475.00
270 Group Insurance - Self-Insurance	1,217.00	2,711.00
<b>Total Personnel Services - Employee Benefits</b>	<b>\$11,198.00</b>	<b>\$24,924.00</b>
<b>300 <u>Purchased Professional and Technical Services</u></b>		
390 Other Purchased Professional and Technical Services	76.00	169.00
<b>Total Purchased Professional and Technical Services</b>	<b>\$76.00</b>	<b>\$169.00</b>
<b>400 <u>Purchased Property Services</u></b>		
490 Other Purchased Property Services	579.00	1,290.00
<b>Total Purchased Property Services</b>	<b>\$579.00</b>	<b>\$1,290.00</b>
<b>500 <u>Other Purchased Services</u></b>		
599 Other Miscellaneous Purchased Services	548.00	1,220.00
<b>Total Other Purchased Services</b>	<b>\$548.00</b>	<b>\$1,220.00</b>
<b>600 <u>Supplies</u></b>		
610 General Supplies	93.00	208.00
<b>Total Supplies</b>	<b>\$93.00</b>	<b>\$208.00</b>
<b>Total 1100 Regular Programs - Elementary / Secondary</b>	<b>\$35,209.00</b>	<b>\$78,369.00</b>

LEA : 124158503     Unionville-Chadds Ford SD

Printed 2/14/2023 9:29:46 AM

1110 Regular Programs

	<u>Nonspecial Education</u>	<u>Special Education</u>
<b>100 <u>Personnel Services - Salaries</u></b>		
100 Personnel Services - Salaries	22,715.00	50,558.00
<b>Total Personnel Services - Salaries</b>	<b>\$22,715.00</b>	<b>\$50,558.00</b>
<b>200 <u>Personnel Services - Employee Benefits</u></b>		
220 Social Security Contributions	1,715.00	3,816.00
230 PSERS Retirement Contributions	7,981.00	17,765.00
250 Unemployment Compensation	71.00	157.00
260 Workers' Compensation	214.00	475.00
270 Group Insurance - Self-Insurance	1,217.00	2,711.00
<b>Total Personnel Services - Employee Benefits</b>	<b>\$11,198.00</b>	<b>\$24,924.00</b>
<b>300 <u>Purchased Professional and Technical Services</u></b>		
390 Other Purchased Professional and Technical Services	76.00	169.00
<b>Total Purchased Professional and Technical Services</b>	<b>\$76.00</b>	<b>\$169.00</b>
<b>400 <u>Purchased Property Services</u></b>		
490 Other Purchased Property Services	579.00	1,290.00
<b>Total Purchased Property Services</b>	<b>\$579.00</b>	<b>\$1,290.00</b>
<b>500 <u>Other Purchased Services</u></b>		
599 Other Miscellaneous Purchased Services	548.00	1,220.00
<b>Total Other Purchased Services</b>	<b>\$548.00</b>	<b>\$1,220.00</b>
<b>600 <u>Supplies</u></b>		
610 General Supplies	93.00	208.00
<b>Total Supplies</b>	<b>\$93.00</b>	<b>\$208.00</b>
<b>Total 1110 Regular Programs</b>	<b>\$35,209.00</b>	<b>\$78,369.00</b>

LEA : 124158503      Unionville-Chadds Ford SD

Printed 2/14/2023 9:29:46 AM

3000 Operation of Non-Instructional Services

100 <u>Personnel Services - Salaries</u>		
100 Personnel Services - Salaries	129.00	287.00
<b>Total Personnel Services - Salaries</b>	<b>\$129.00</b>	<b>\$287.00</b>
<b>Total 3000 Operation of Non-Instructional Services</b>	<b>\$129.00</b>	<b>\$287.00</b>

LEA : 124158503     Unionville-Chadds Ford SD

Printed 2/14/2023 9:29:46 AM

3200 Student Activities

	<u>Nonspecial Education</u>	<u>Special Education</u>
100 <u>Personnel Services - Salaries</u>		
100 Personnel Services - Salaries	129.00	287.00
<b>Total Personnel Services - Salaries</b>	<b>\$129.00</b>	<b>\$287.00</b>
<b>Total 3200 Student Activities</b>	<b>\$129.00</b>	<b>\$287.00</b>



LEA : 124158503      Unionville-Chadds Ford SD

Printed 2/14/2023 9:29:46 AM

5000 Other Expenditures and Financing Uses

900 <u>Other Uses of Funds</u>		
990 Miscellaneous Other Uses of Funds	2,874.00	6,397.00
<b>Total Other Uses of Funds</b>	<b>\$2,874.00</b>	<b>\$6,397.00</b>
<b>Total 5000 Other Expenditures and Financing Uses</b>	<b>\$2,874.00</b>	<b>\$6,397.00</b>

LEA : 124158503     Unionville-Chadds Ford SD

Printed 2/14/2023 9:29:46 AM

5100 Debt Service / Other Expenditures and Financing Uses	<u>Nonspecial Education</u>	<u>Special Education</u>
900 <u>Other Uses of Funds</u>		
990 Miscellaneous Other Uses of Funds	2,874.00	6,397.00
<b>Total Other Uses of Funds</b>	<b>\$2,874.00</b>	<b>\$6,397.00</b>
<b>Total 5100 Debt Service / Other Expenditures and Financing Uses</b>	<b>\$2,874.00</b>	<b>\$6,397.00</b>

LEA : 124158503     Unionville-Chadds Ford SD

Printed 2/14/2023 9:29:46 AM

5110 Debt Service	<u>Nonspecial Education</u>	<u>Special Education</u>
900 <u>Other Uses of Funds</u>		
990 Miscellaneous Other Uses of Funds	2,874.00	6,397.00
Total Other Uses of Funds	\$2,874.00	\$6,397.00
Total 5110 Debt Service	\$2,874.00	\$6,397.00

	<u>Nonspecial Education</u>	<u>Special Education</u>
7000 Revenue from State Sources		
Total Revenue from State Sources	\$4,848	\$10,791
Total	\$4,848	\$10,791
TOTAL REVENUES	\$4,848	\$10,791

LEA : 124158503     Unionville-Chadds Ford SD

Printed 2/14/2023 9:29:51 AM

	<u>Nonspecial Education</u>	<u>Special Education</u>
<b>7000 Revenue from State Sources</b>		
7810 State Share of Social Security and Medicare Taxes	857	1,908
7820 State Share of Retirement Contributions	3,991	8,883
<b>Total Revenue from State Sources</b>	<b>\$4,848</b>	<b>\$10,791</b>
<b>TOTAL</b>	<b>\$4,848</b>	<b>\$10,791</b>
<b>TOTAL REVENUES</b>	<b>\$4,848</b>	<b>\$10,791</b>