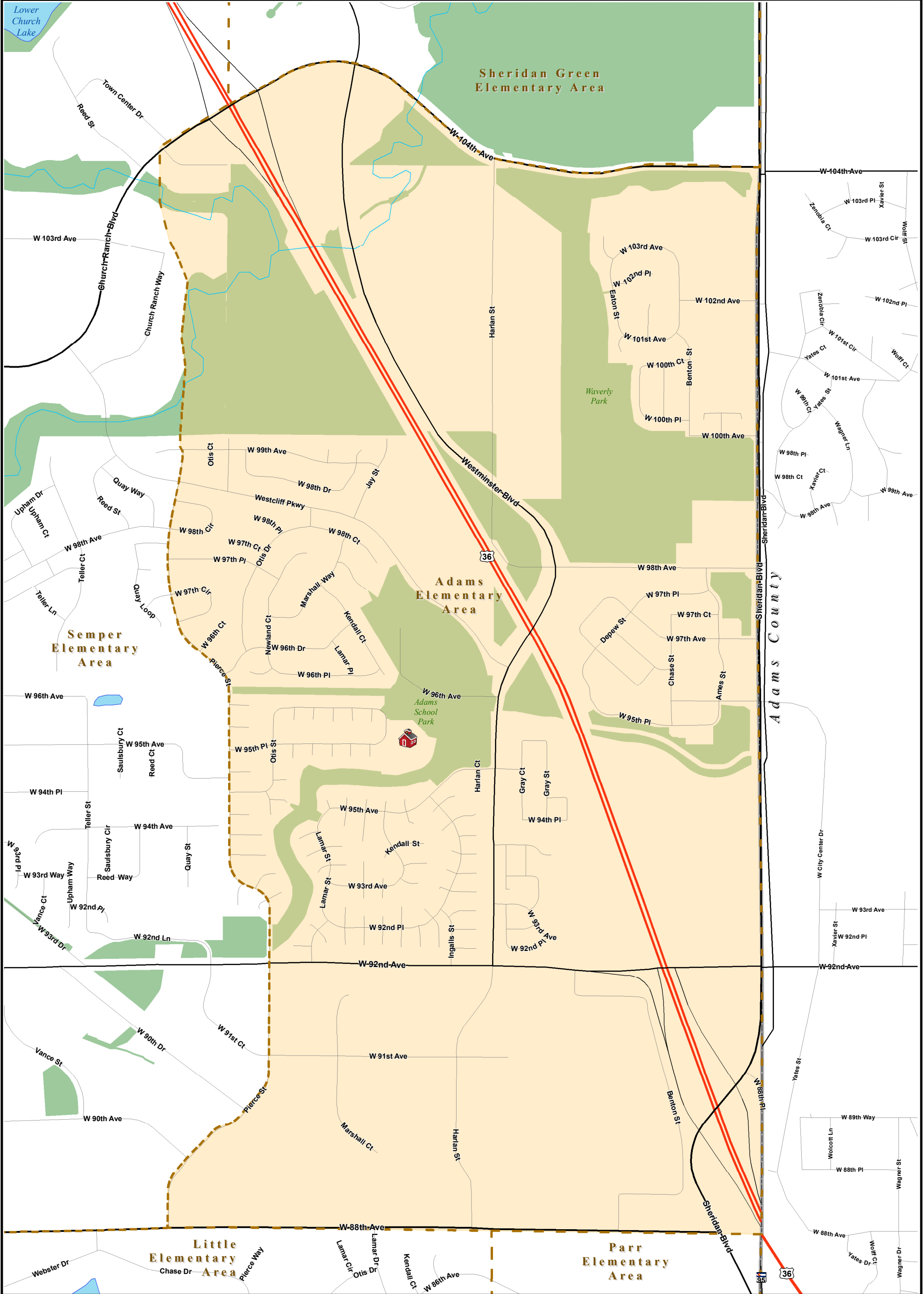


Adams Elementary

Standley Lake Attendance Area

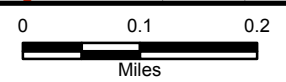
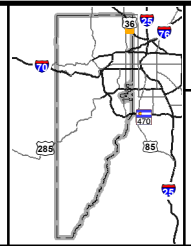
6450 W 95th Pl, Westminster CO 80021

303-982-9790



Planning and Construction
303-982-2584

- Adams Elementary
- Adams Elementary Boundary
- School Boundaries
- Parks



Location Code: 02500
School Code: 0030
Rev: 20120613
Disclaimer: This map is for cartographic use only and may contain information that is no longer current. Jefferson County Schools assumes no responsibility of any kind for use of this map. Please contact the Planning Department with any questions.