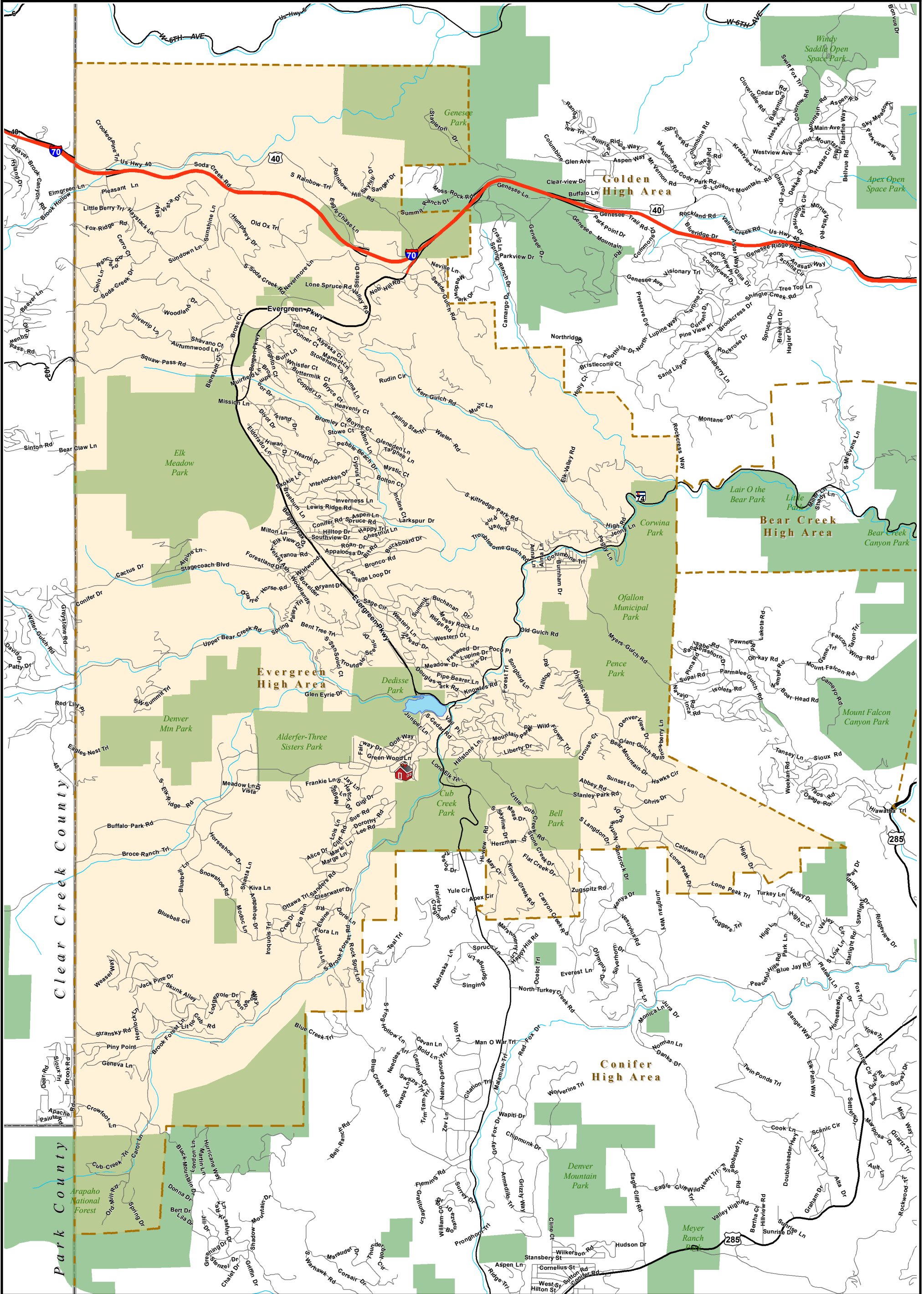

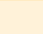




Evergreen High

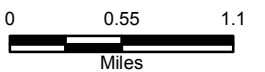
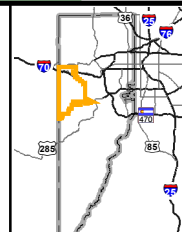
29300 Buffalo Park Rd, Evergreen CO 80439

303-982-5140



-  Evergreen High
-  Evergreen High Boundary
-  School Boundaries
-  Parks

Planning and Construction
303-982-2584



Location Code: 74000
School Code: 2836
Rev: 20120509

Disclaimer: This map is for cartographic use only and may contain information that is no longer current. Jefferson County Schools assumes no responsibility of any kind for use of this map. Please contact the Planning Department with any questions.

Evergreen High School

29300 Buffalo Park Road, Evergreen 80439 · Voice: 303.982.5140 · Evergreen Attendance Area

LEGAL DESCRIPTION

Beginning at the center of section 1, T4S, R72W, 6th principal meridian; east 4 1/4 miles, south 1 mile; west 3/4 mile; south 1/2 mile to the NW corner of section 15, T4S, R71W; east 3/4 mile; south 1/2 mile; west 1/4 mile to the center of section 15, T4S, R71W; south 1/2 mile; east 1/2 mile; south 1/2 mile; east 3/4 mile; south 1/2 mile; east 1/2 mile; southeast approximately 1,600 ft to the center section line; south 1/4 mile to the center of section 25, T4S, R71W; east 1/2 mile; south 3 1/2 miles to the NW corner of section 18, T5S, R70W; southeasterly on a diagonal to the NE corner of section 20, T5S, R70W; west 1/2 mile; south 1/4 mile; west 3/4 mile (including split parcel 50-202-01-008); south 1/4 mile; west 3/4 mile; north 1/2 mile to the SE corner section 13 T5S, R71W; west 1 mile; south 3/4 mile; west 1 mile; north 3/4 mile to the NE section 22, T5S, R71W (including 51-224-03-002 at the intersection of Skyline Dr and County Hwy #73); west 1 mile; south 3/4 mile; west approximately 1,900 ft; south 1 mile; west approximately 3,260 ft; south 1 1/4 miles to the SE corner section 32, T5S, R 71W, west 1 1/2 miles to the north 1/4 corner of section 6, T6N, R71W, south 1 mile, west approximately 1 mile to the Jefferson County border; north along the Jefferson County border approximately 12 1/2 miles to the center of section 1, T4S, R72W also known as the point of beginning.

Contributing School: Evergreen Middle School.