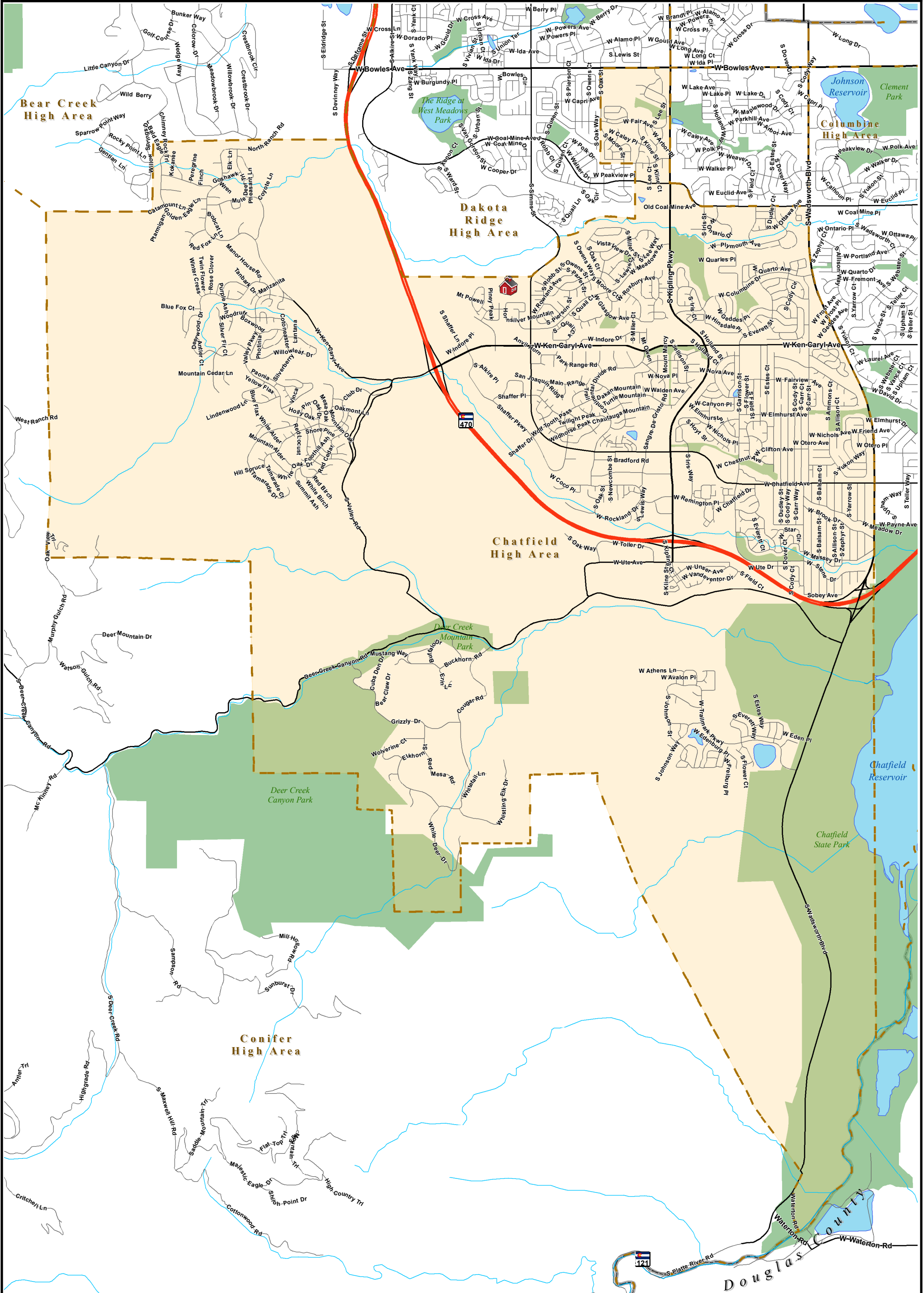

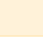




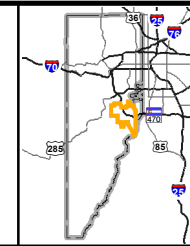
Chatfield High

7227 S Simms St, Littleton CO 80127
303-982-3670



-  Chatfield High
-  Chatfield High Boundary
-  School Boundaries
-  Parks

Planning and Construction
303-982-2584



0 0.35 0.7
Miles

Location Code: 73200
School Code: 1522
Rev: 20120509
Disclaimer: This map is for cartographic use only and may contain information that is no longer current. Jefferson County Schools assumes no responsibility of any kind for use of this map. Please contact the Planning Department with any questions.

Chatfield High School

7227 South Simms Street, Littleton 80127 · Voice: 303.982.3670 · Chatfield Attendance Area

LEGAL DESCRIPTION

Beginning at the south $\frac{1}{4}$ corner of section 23, T5S, R70W, 6th principal meridian; east $\frac{3}{4}$ mile; north $\frac{1}{2}$ mile; east to C-470 (approximately 900 ft south of the W Bowles Ave bridge); south along C-470 to a point approximately 3,700 ft north of the W Ken Caryl Ave bridge; east to S Simms St approximately 710 ft north of W Fremont Ave (following the north property line of Chatfield High); north along S Simms St to Dutch Creek (approximately 2,000 ft south of S Ward Rd along S Simms St); east/northeast along Dutch Creek (Meadows Golf Club) to a point approximately 1,300 ft west of S Kipling Pkwy; north to the rear property lines W Coal Mine Pl and S Moore St, past W Coal Mine Ave following the rear property lines of W Peakview Pl and W Walker Pl to W Walker Ave; west along W Walker Ave, continuing along the rear property lines of W Weaver Dr and S Nelson Way; north along the rear property lines of W Weaver Dr and S Oak Way to S Oak St; north along S Oak St to W Bowles Ave; east to S Kipling St; south to W Coal Mine Ave; east to S Wadsworth Blvd; south on S Wadsworth Blvd to a point approximately 1,100 ft south of W Payne Ave (where S Wadsworth Blvd changes from south to southwest and the approximate center of section 2, T6S, R69W, 6th principal meridian); continuing south on the center line of sections 2, 11, 14, and 23 to the South Platte river (also the Jefferson County border); southwest along the river to the intersection of Waterton Rd and the South Platte river (also the Jefferson County line); north along Waterton Rd to S Wadsworth Blvd; thence approximately 3.5 miles northwest along the Dakota Hogback (generally N 27° W) to the north $\frac{1}{4}$ corner of section 16, T6S, R69W; west to the NW corner of section 16; south $\frac{1}{2}$ mile; west $\frac{1}{2}$ mile; south $\frac{1}{2}$ mile; west $\frac{1}{2}$ mile to the SW corner of section 17, T6S, R69W; north $\frac{3}{4}$ mile; west $\frac{1}{4}$ mile; north $\frac{1}{4}$ mile to the NW corner of the NE $\frac{1}{4}$, NE $\frac{1}{4}$, section 18, T6S, R69W; west $\frac{3}{4}$ mile to the NW corner of section 18, T6S, R69W; north 1 $\frac{1}{2}$ miles; west 1 $\frac{1}{2}$ miles to the center of Sec. 2, T6S, R70W, north 2 $\frac{1}{2}$ miles to the south $\frac{1}{4}$ corner of Sec. 23, T5S, R70W also known as the point of beginning.

Contributing Schools:

Deer Creek Middle School
Falcon Bluffs Middle School
Bradford K-8 North (4-8)