

Welcome to Thompson Elementary!



2023-2024

Table of Contents

[Welcome to a New School Year](#)

[Meet the ILC Team](#)

[Contact Information](#)

[Ready for School?](#)

[Arrival and Dismissal](#)

[Attendance Policy](#)

[Health Management Plans / Allergies](#)

[Daily Schedule](#)

[Parent Communication](#)

[Grading Policy](#)

[Community Building Practices](#)

[Successful Students at Thompson](#)

[Online Tools](#)

[What You Can Expect](#)

[Upcoming Dates](#)



Getting to Know Your Child's Teacher

**Hi! I am Ms. Konsmo and this is my 19th
year being a teacher and
I LOVE my job!**

**I also enjoy reading and making
embroidery crafts for my family.**



BACK

Getting to Know Your Child's Teacher

I'd like to extend a warm welcome to my new and returning students. As always, the start of a school year holds the promise of new discovery and learning, as well as the prospect of personal growth in all areas.



BACK

Meet the ILC 3 Team!



**SHARLA KONSMO,
TEACHER**



**KELLY SPENCER,
PARAPROFESSIONAL**



**AMBER WARREN
PARAPROFESSIONAL**



**MARTA CASTILLA,
PARAPROFESSIONAL**

We are passionate about helping our students become confident readers, writers, scientists, and mathematicians. WE CAN DO HARD THINGS!



BACK

Meet the Specialist Teachers!

Mr. Hurt - PE



**Ms. Ramming
Library**



Ms. Franz - Music



Ms. Weekley - Art



**Mr. Horak
Technology**



Integration with general education peers and adult assistance will be provided based on student need.



BACK

Contact Information

Email is the best way to contact me. During live teaching time I will be focusing on your child, but will return your email OR phone call as soon as possible (within 24 hours).

Sharla Konsmo	
Phone Number	253.800.5800
Email	skonsmo@bethelsd.org
Text using REMIND	Text the message @a69d2c to the number 81010.



Ready for School?

Bring Daily:

- Individual Water Bottle for use in class
- Backpack with Orange Folder
- Headphones (preferably not earbuds)

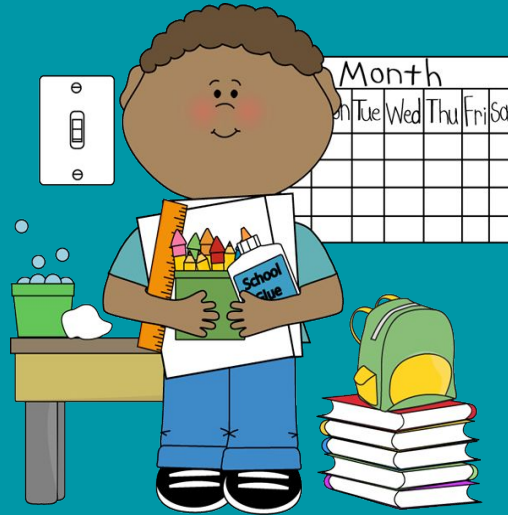


BACK

School Supplies

Most school supplies, such as pencils, markers, glue sticks, etc., will be provided by Thompson Elementary School.

Our classroom would also appreciate donations of healthy snacks throughout the school year, though this is **NOT** required.



Individual Student Supplies

- Backpack
- Reusable water bottle
- Headphones



BACK

Arrival and Dismissal

- Doors open at 9:20am. Tardy bell rings at 9:30 am.
- Students may eat breakfast at school. They can enter at 9:15am.
- If you change your normal pick-up routine, please **contact the office** by 3pm that day to ensure the change is communicated.
- NO toys or stuffed animals allowed at school unless it is a special day.
- Dress for the weather, we go outside daily.



Drop off and Pick up

- Most students in the ILC classroom receive special transportation. If you do not have a bus routed for your child and need this service, please let me know ASAP.
- Pick up and Drop off for the ILC classrooms is at the corner of the school near the Thompson Preschool building.



9:15

3:55

Attendance Policy

Students should make every effort to be here on time every day.

But... if your child shows these symptoms, please be cautious and keep them home:

- Fever
- Vomiting
- Diarrhea (2x in 24 hours)

253.800.5800



Health Management Plans / Allergies



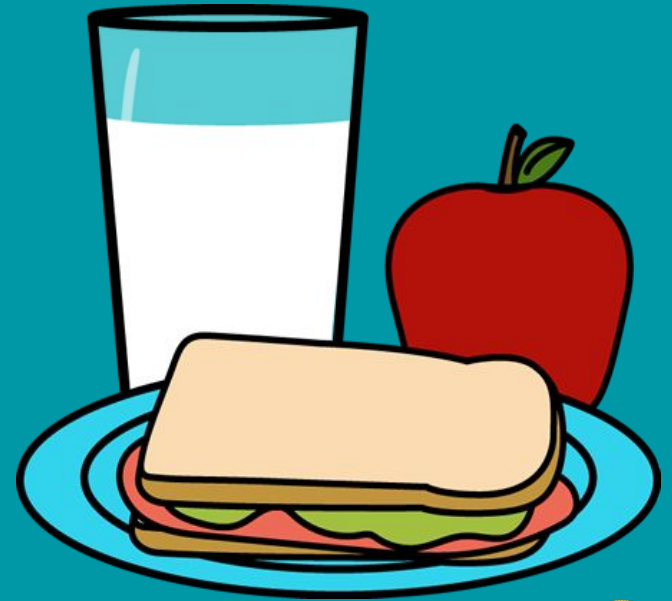
- If your child has allergies, or specific dietary requirements due to medical recommendations or religious beliefs, please let me know.
- The school nurse will contact families directly to review any and all health management plans.



BACK

Lunch / Snacks

- All students get FREE breakfast and lunch, but families will still need to complete the Free/Reduced Lunch forms online.
- We will eat in the cafeteria again this school year with 5th grade.
- We will offer snacks / treats randomly throughout the school year. Most often, this is an earned reward by meeting a personal or whole group goal.



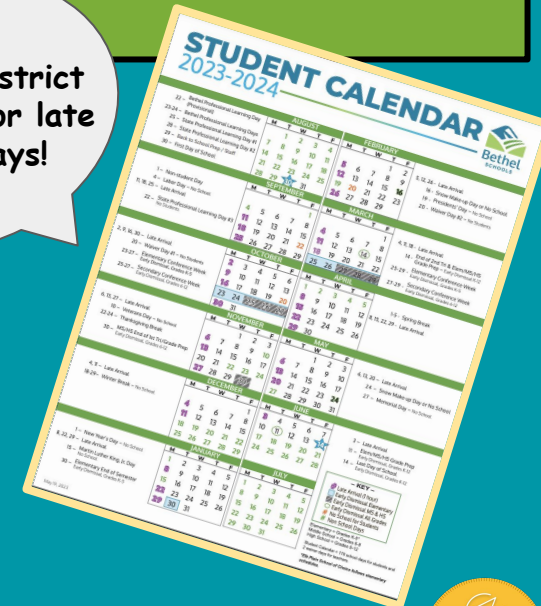
BACK

Daily Schedule

9:30-9:40	Arrival / Breakfast
9:40-10:00	AM Meeting - ELA Focus
10:00-11:15	ELA Small Group Rotations
11:15-11:50	Science / Social Studies
11:55-12:45	Lunch / Recess
12:50-1:10	PM Meeting - MATH Focus
1:10-2:25	MATH Small Group Rotations
2:25-2:40	Recess / Brain Break
2:40-2:55	Social Emotional Learning (SEL)
3:05-3:50	Specialist (Late Start Mondays 3:00 - 3:35)

Movement breaks
provided throughout
the school day.

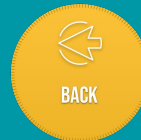
Look at district
calendar for late
start days!



BACK

ILC 3 Content Overview

	Whole Group		Small Group	Independent Practice
Reading	Asking Answering Questions	Story Elements	Foundational Skills Decodable Text Fluency Practice	Narrative Passages Informational Text
Science Topics: Forces and Motion & Life Cycles and Traits Social Studies Topics: Citizenship in a Community & Communities Around the World				
Writing	Letter / Sound Combinations Word Bank Usage Evidence Based Writing		Handwriting Spelling / Sight Words Syntax / Sentence Writing	Personal Information Journaling Learning to Type
Math	Time / Money Shapes / Fractions Data		Number Sense / Place Value Addition and Subtraction Word Problems	Basic Calculations Calculator Use
Foundational Reading and writing Skills Letter Sounds, Vowels both short and long sounds, CVC words, short vowel words with consonant blends				



Grading Policy

For assessed work, we use the 4, 3, 2, 1 standards-based grading scale. The ILC classroom is a fully modified program with academic expectations based on outcomes typically represented by a first grade student in general education.

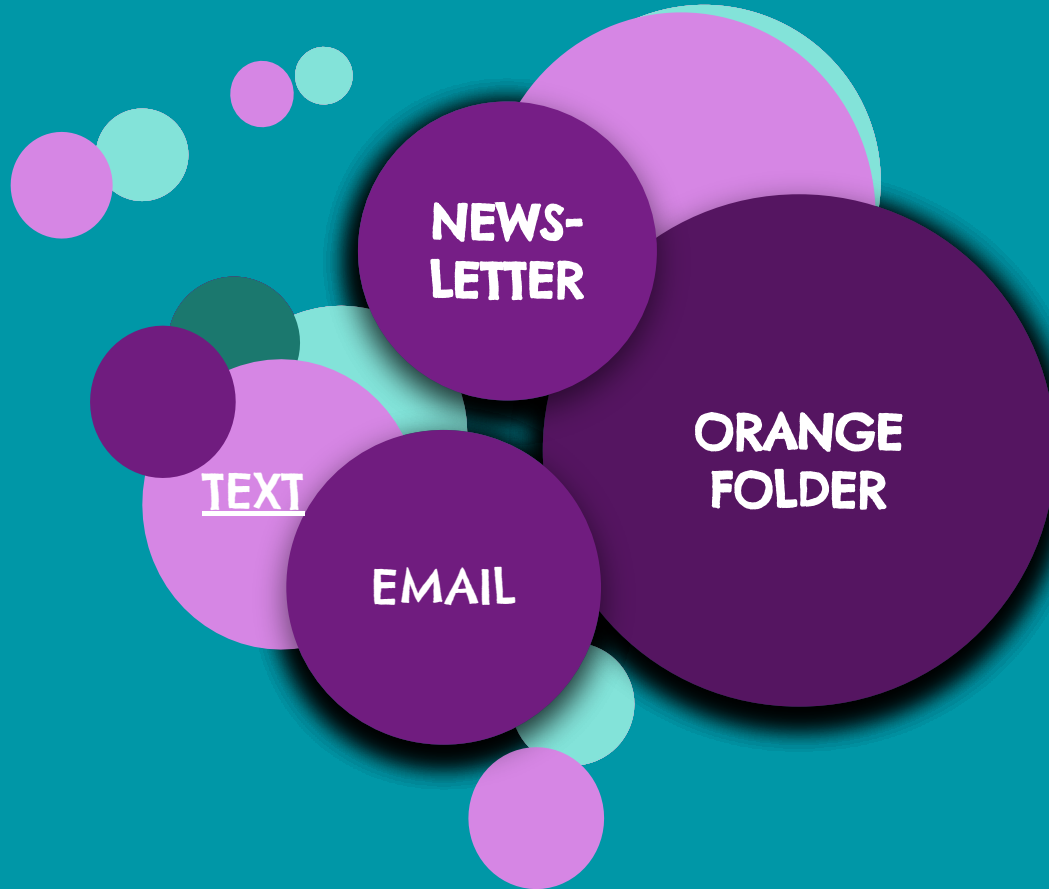
- 4 - Your child demonstrates advanced understanding of grade level standards.
- 3 - Your child demonstrates proficiency for grade level standards.
- 2 - Your child demonstrates basic understanding of grade level standards. Your child needs additional practice and support.
- 1 - Your child demonstrates minimal understanding of grade level standards. Your child needs significant support and practice.

IEP Progress Reports will provide more specific information about student progress.



BACK

Parent Communication



IEP / Re-evaluation Meetings / Conferences

Most meetings will be held in the morning, before school starts. If your schedule requires a different meeting time, please let me know.

IEP meetings will be scheduled a month in advance.

For students who will be re-evaluated for special education this school year, two meetings will be required, one to reestablish eligibility for special education and a follow up meeting to write the IEP.

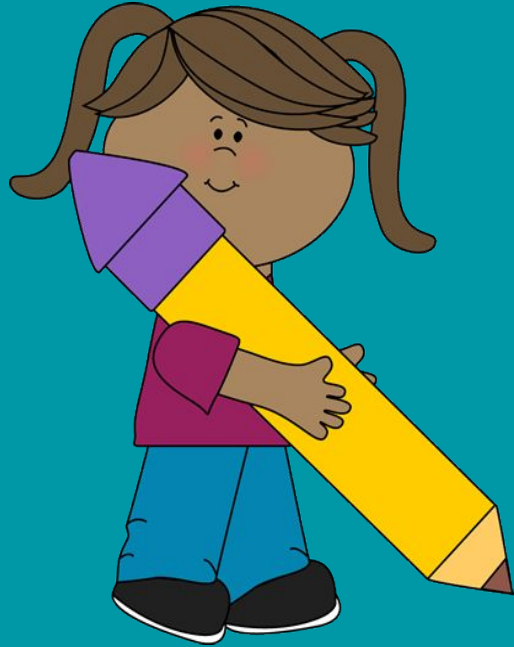
Parent / Teacher conferences will be scheduled in October and March after school, with one day available for evening appointments.

Additional meetings and/or meetings conducted via Zoom can be scheduled per parent request.



BACK

Community Building Practices



We believe

- Students will be involved in identifying and creating classroom community expectations and norms.
- Participation is important because we learn best by working and learning with others.



BACK

ILC 3 Social Emotional Learning

We
GROW
Positive
Feelings!

We
SHRINK
Negative
Feelings!



Successful Students at Thompson R O A R



R O A R

Respectful

On Task

Always Safe

Responsible



We do the Right Thing at the Right Time in the Right Way with a Good Attitude!

We can learn anywhere!

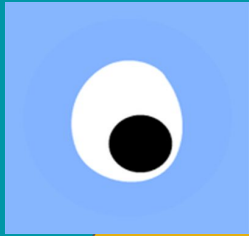
- We work hard, even when things get difficult.
- We set and achieve goals.
- We solve problems.
- We make mistakes and learn from them.
- We ask for help when we need it.
- We believe in ourselves!

Everybody has an “OOPs” moment. Students may lose recess minutes, but they can earn them back by resetting.



BACK

Online Tools



Connect to your child's Seesaw



Seesaw

Family Sign In



Sign in with Google

Create Family Account

[Terms of Service](#) and [Privacy Policy](#)

Download the Seesaw app or use a computer to access.

- Link to your child's account through the QR code or link from your child's teacher
- Create or use an existing account to see your child's work or message your child's teacher.



BACK

What You Can Expect

Wednesday	Orange folders will go home with any important papers from the office.
Every Day	Read with your child everyday for 20 minutes!
Coming Soon!	Individual Student Goal Sheets (Math and Reading)

PLEASE Communicate how your child will be getting home!



Plans change? Call the office before 3pm to notify us in time.



Upcoming Dates

8/28: Open House 5:30-7:00 pm

8/30: First Day of School

9/1: No Student Day

9/4: Labor Day, No School

9/11, 9/18, 9/25: 1 hour late start

9/22: No Student Day

9/29: Fall Picture Day

9/15
PTA Popcorn
Smencil Day

9/21
PTA Restaurant Night
Godfather's Pizza 5-8 pm



BACK