

Enrollment Equity Committee Recommendation

2021-2022



In the fall of 2023, the Duneland School Corporation (DSC) will serve students in grades 5-8 at renovated Liberty and Westchester campuses.

Without making any adjustments to current school enrollment boundaries, Westchester would serve **934** students and Liberty would serve **688** students in the fall of 2023 (based on current enrollment trends).

In order to provide maximum opportunities for all students (courses/programs, co & extra curricular opportunities, etc.), DSC is looking to establish enrollment equity at each of the two schools.



Enrollment Equity Committee

Committee Formation - DuneNews and school-based newsletters were utilized to find parental volunteers to serve on the Enrollment Equity Committee.

Committee Make-up - The committee consisted of elementary and intermediate school parents from all K-6 schools, community members, teachers (all parents to DSC students) and school/district administrators. Once formed, the committee consisted of 32 individuals.

Committee Responsibilities - The committee was charged with developing options regarding possible elementary, intermediate/middle school attendance boundary adjustments for the 2023-2024 school year.



The committee used the following parameters when weighing potential solutions:

1. Each school should have a total student population consistent with the number of classrooms planned to serve the general population, exclusive of rooms set aside for other uses.
- 2*. When possible, recommended boundaries should take into consideration space to accommodate anticipated enrollment growth.
- 3*. Consideration should be given to all demographic profiles (socioeconomic status, race, special education, ELL, etc.) during the attendance boundary development process.
4. Students with disabilities should be placed in accordance with applicable laws with consideration given to appropriate services, specialized spaces, and sound educational practices that meet students' identified needs.
- 5*. Changes from the present attendance boundaries should be minimized.
6. All students within the new attendance boundaries shall be required to attend their assigned school except when approved through the pre-defined DSC transfer processes where transportation is not provided.
- 7*. Student travel time on school transportation should be considered.

The Enrollment Equity Committee reviewed and discussed the following:

- Current Enrollment Trends;
- Historical Enrollment Trends;
- Closed Enrollment Policy;
- Transfer Student Policies;
 - McKinney-Vento Students (as prescribed by Federal law);
 - Internal Transfers (as prescribed by DSC procedures);
 - “Grandfathered” Transfers (as prescribed by state law);
 - Staff Children Transfers (as prescribed by state law);
 - Adjoining School Corporation Transfers (as prescribed by state law);
- DSC Boundary Data;
- Projected New Home Starts; *and*
- Transportation Barriers



As of 10/26/21

ELEMENTARY/ENROLLMENT

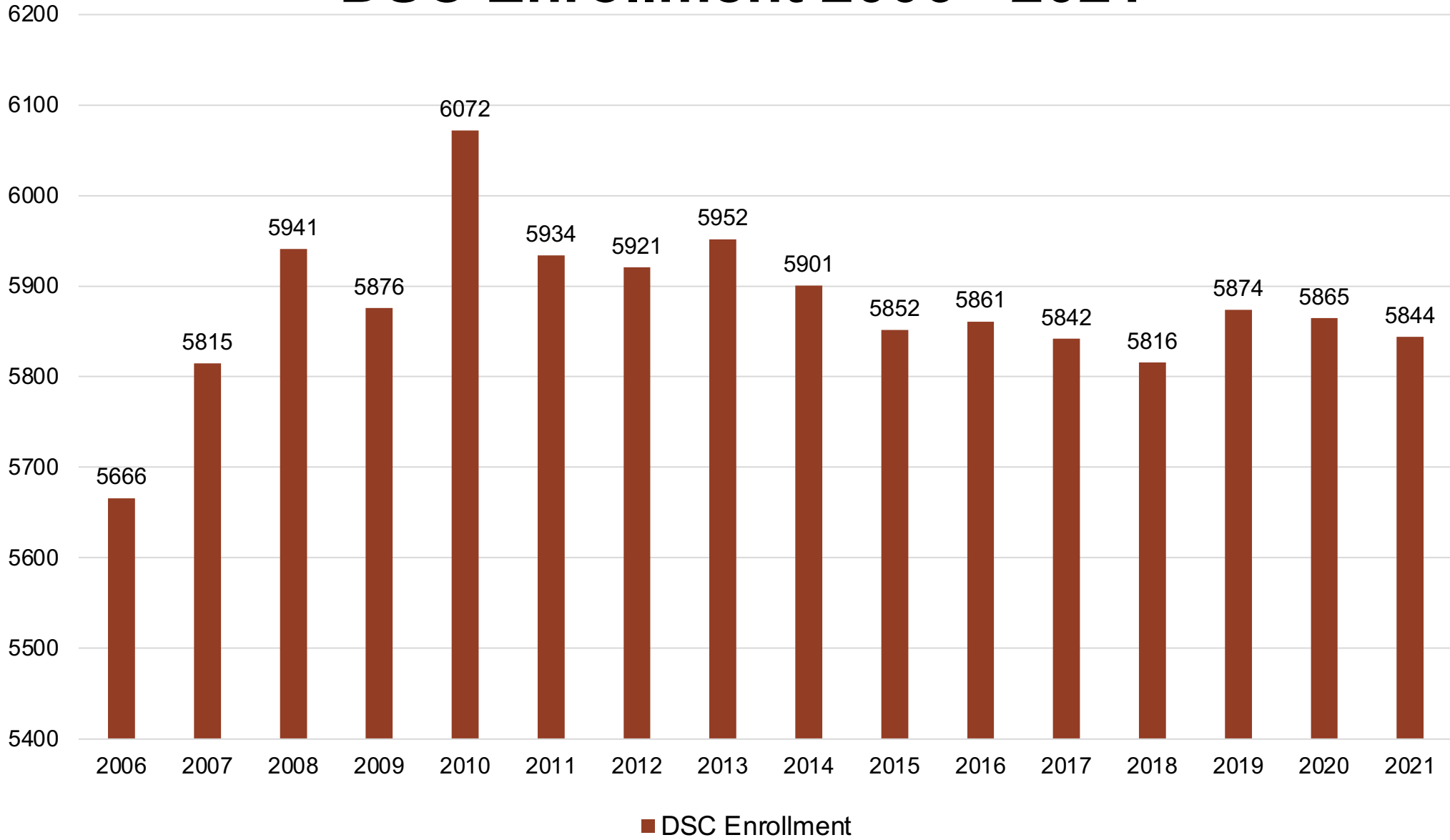
	K	1ST	2ND	3RD	4TH	5th	6th	7TH	8TH	TOTAL
Bailly	64	80	90	85	86	X	X	X	X	405
Brummitt	73	80	61	61	64	X	X	X	X	339
Jackson	47	56	78	68	67	X	X	X	X	316
Liberty Elem	98	90	108	96	98	X	X	X	X	490
Yost	68	76	90	88	89	X	X	X	X	411
TVA	0	4	6	10	15	6	10	X	X	51
LIS	X	X	X	X	X	173	186	X	X	359
WIS	X	X	X	X	X	219	242	X	X	461

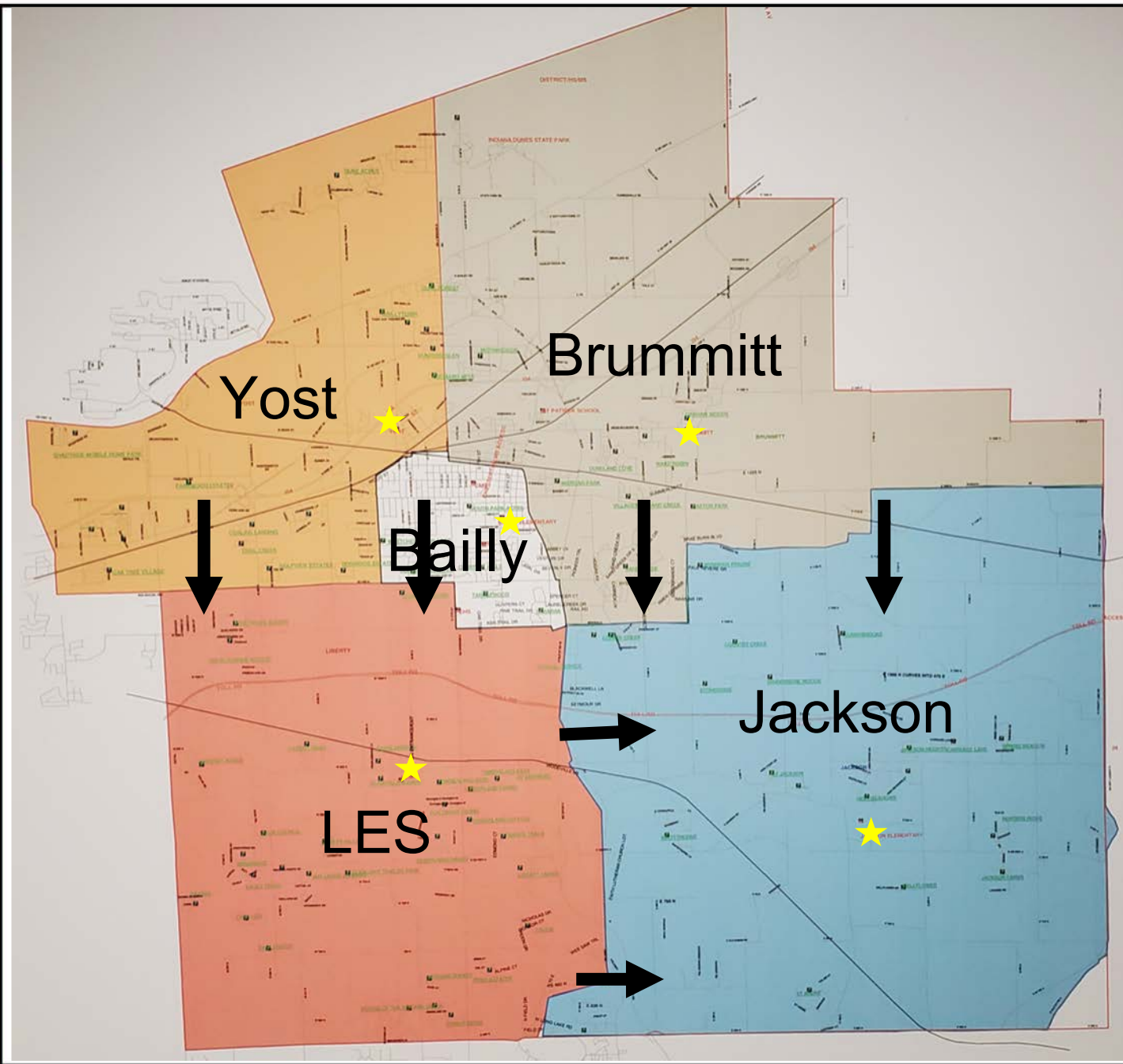
2023 Westchester	X	X	X	X	X	234	239	219	242	934
2023 Liberty	X	X	X	X	X	164	165	173	186	688

**Fall 2023 Reconfiguration Cohort
(127 student difference)**



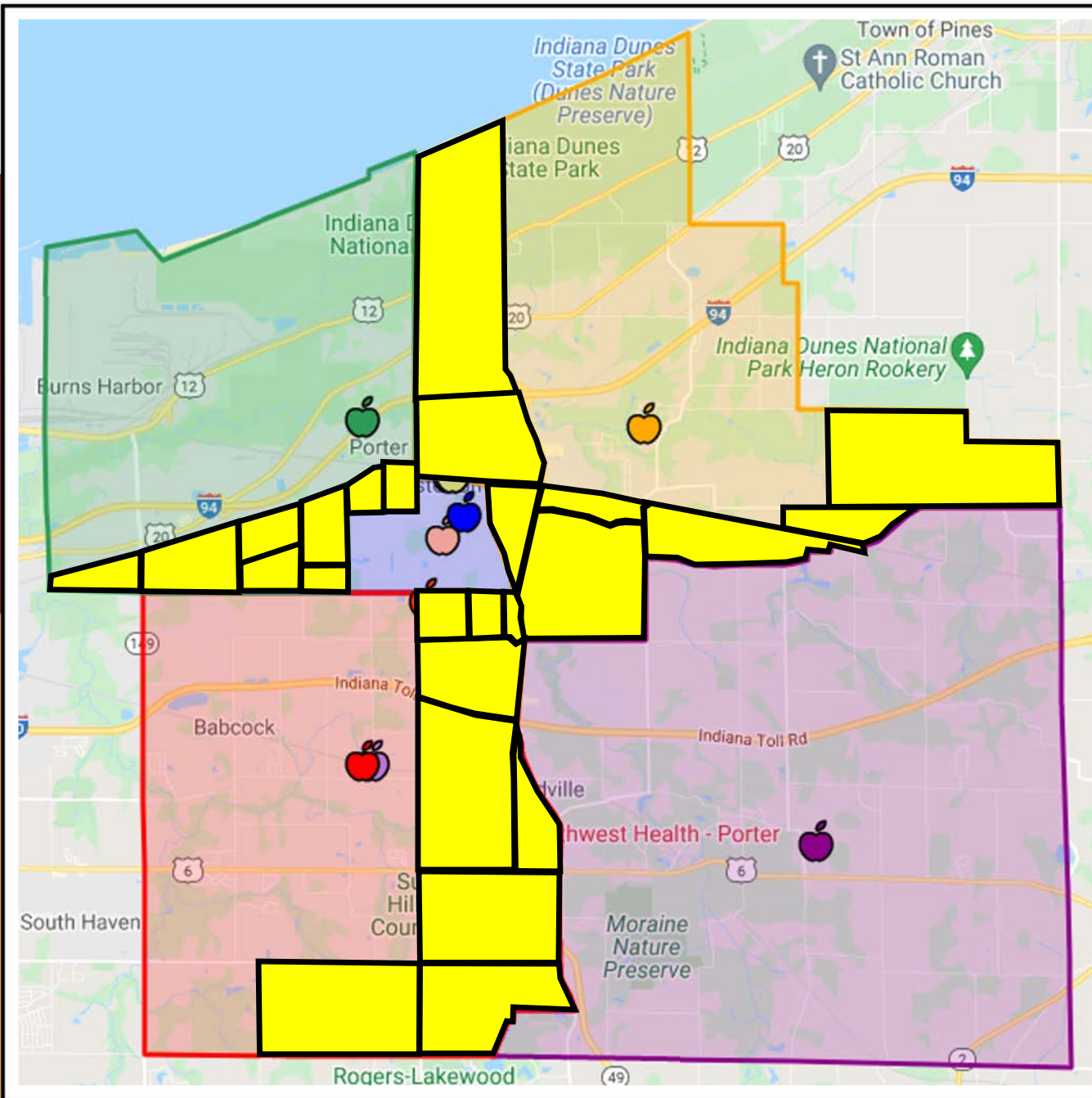
DSC Enrollment 2006 - 2021





Since the goal of the process was to increase the enrollment at the Liberty campus, the committee focused on strategies to move students into the Liberty attendance area. A secondary goal was to increase enrollment at Jackson Elementary School.





Although all DSC areas were discussed, the committee paid close attention to the boundary areas indicated in yellow.





The committee created and discussed multiple scenarios.

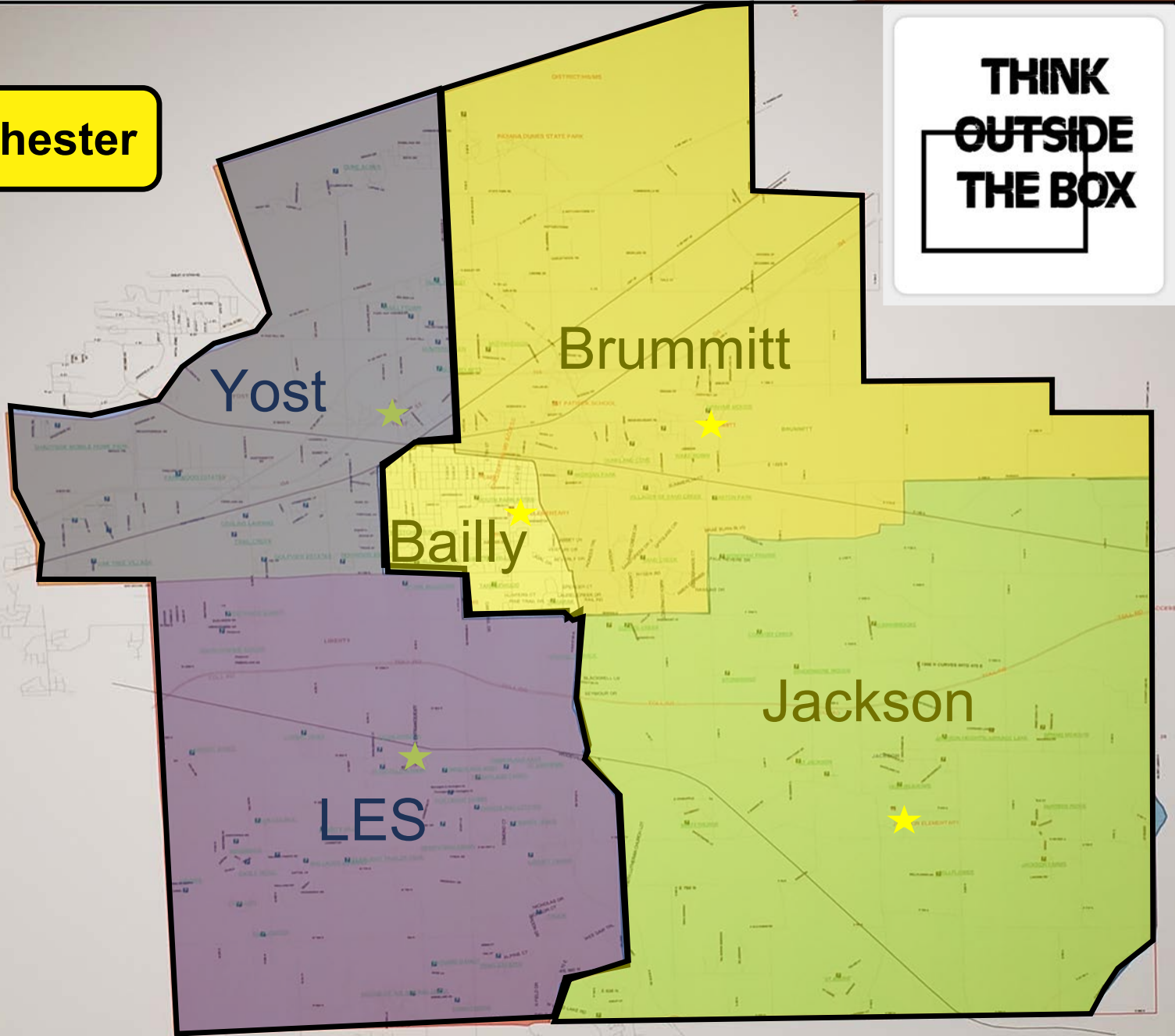


Liberty



Westchester

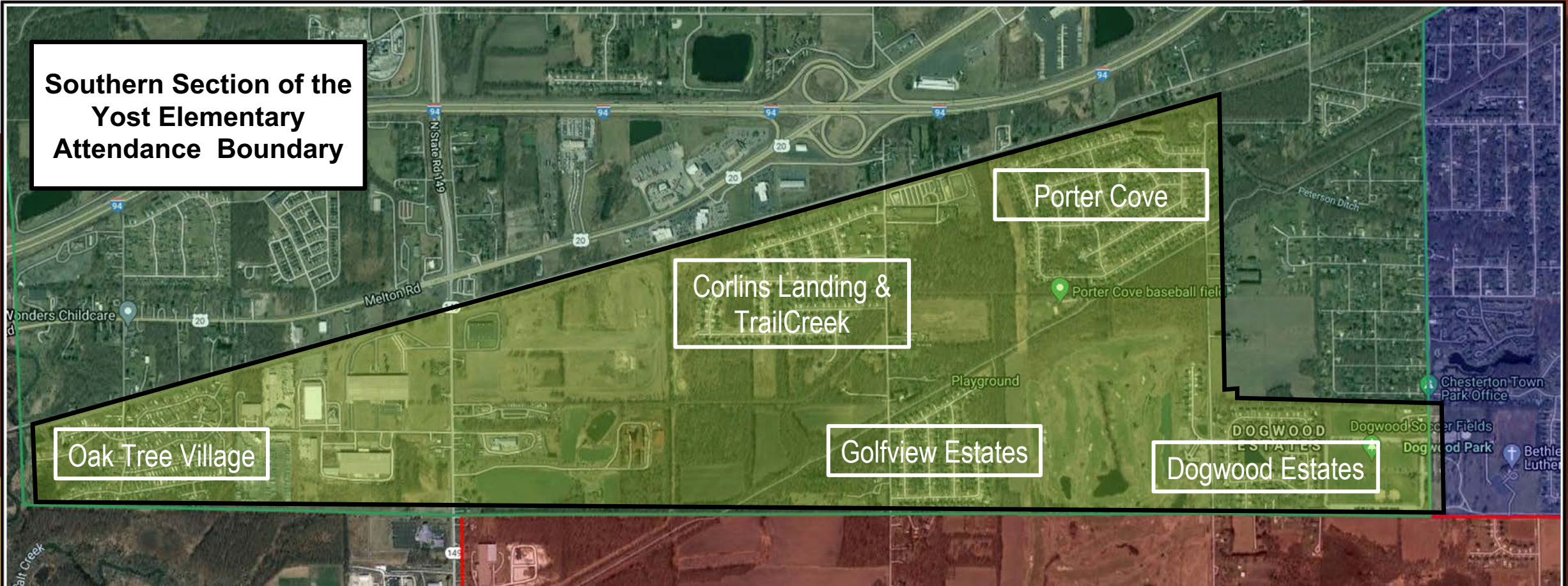
THINK
OUTSIDE
THE BOX



Consensus Decision



**Southern Section of the
Yost Elementary
Attendance Boundary**



Although elementary boundaries would remain the same (students would still attend Yost Elementary School), students in the southern portion of the Yost attendance area would attend Liberty for Intermediate School and Middle School.



Boundaries



The committee selected this scenario for the following reasons:

1. Balances enrollment between both campuses (792 – 785)
2. Decreases the socioeconomic disparity between the two campuses
3. Impacts the least number of students and families out of all scenarios considered
4. Has room for adjustment if enrollment trends change (subdivision carveout)
5. Transportation times will not be significantly impacted
6. Neighborhood students will transition to 5-8 schools together

(Based on Current Enrollment)

- 38% of Kindergarten students at Yost will transition together
- 30% of 1st grade students at Yost will transition together
- 50% of 2nd grade students at Yost will transition together
- 29% of 3rd grade students at Yost will transition together
- 35% of 4th grade students at Yost will transition together

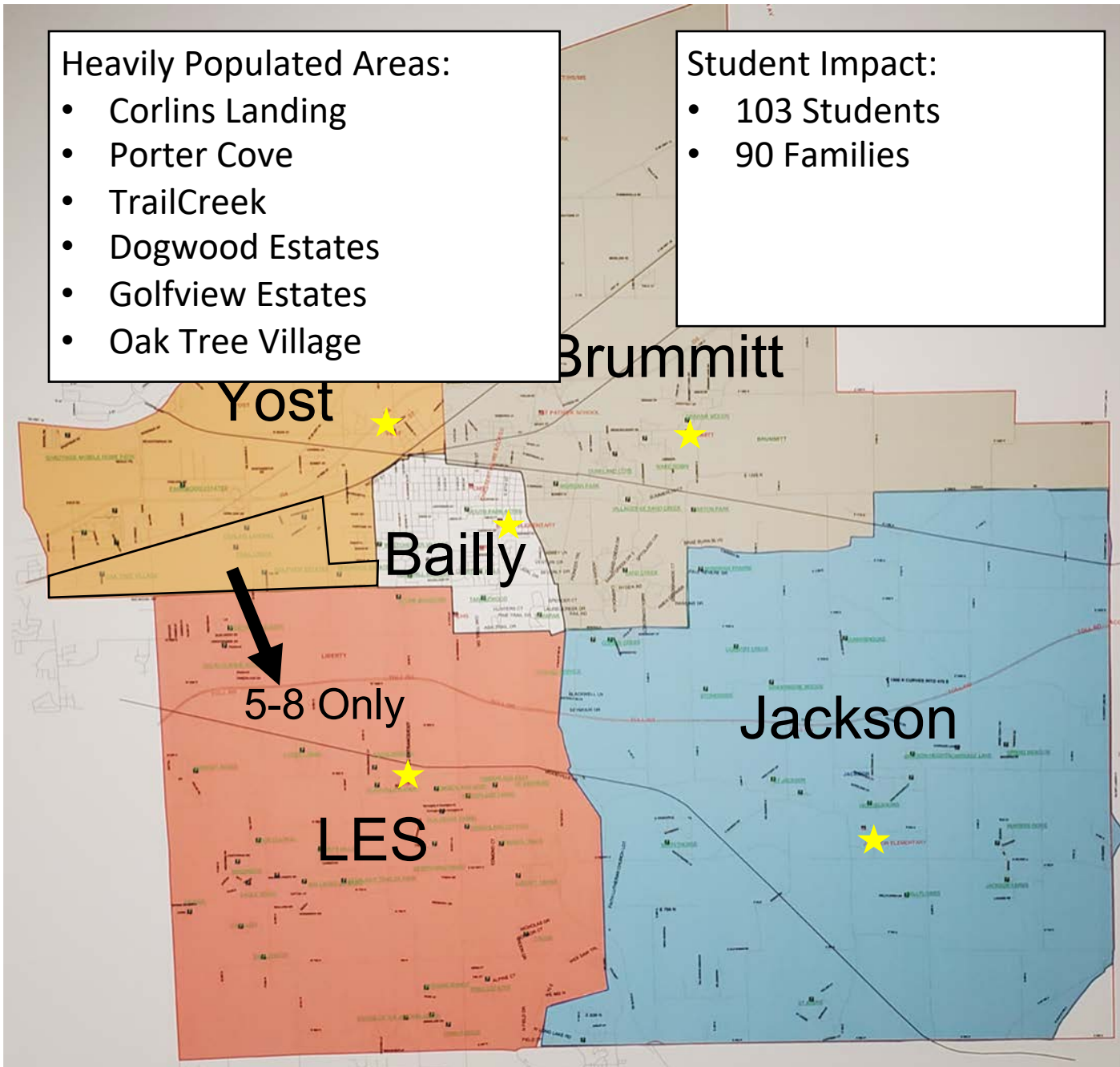


Heavily Populated Areas:

- Corlins Landing
- Porter Cove
- TrailCreek
- Dogwood Estates
- Golfview Estates
- Oak Tree Village

Student Impact:

- 103 Students
- 90 Families



Scenario 3.5 Overview:

- Elementary boundaries remain the same
- Students in the southern portion of the Yost boundary area would attend Liberty for IS & MS

Enrollment (2023 projection):

- LIS/LMS – 785
- WIS/WMS – 792

SES:

- LIS/LMS – 25%
- WIS/WMS – 32%

SpEd:

- LIS/LMS – 20%
- WIS/WMS – 20%

Race (American Indian, Asian, Black, Multi-Racial):

- LIS/LMS – 7.27%
- WIS/WMS – 12.12%

Ethnicity (Non-Hispanic):

- LIS/LMS – 81%
- WIS/WMS – 86%

Oak Tree Village
• WIS – 5.4 Miles
• LIS – 6.0 Miles

Corlins Landing & TrailCreek
• WIS – 3.6 Miles
• LIS – 4.2 Miles

Porter Cove
• WIS – 3.1 Miles
• LIS – 3.5 Miles

Golfview Estates
• WIS – 4.4 Miles
• LIS – 3.9 Miles

Dogwood Estates
• WIS – 2.3 Miles
• LIS – 2.9 Miles

Decision Parameter - Student travel time on school transportation should be considered.

0.6 Miles



Local School Experiences



Several elementary schools split (Cooks, Northview, Central and Heavilin). There has not been any notable detriment since they all eventually become 9th graders at VHS. When students have been asked about the transition, a vast majority expressed that it was not significant especially when they had familiar elementary faces make the transition with them. They also stated that it was nice to have additional friends when they transitioned to high school.



Like Valparaiso, a few elementary schools are split in Portage. They have not experienced any concerns with transitions over the years. Students adapt well to the change. Portage students have experienced the same benefits as those in Valparaiso.



LES/Jackson Boundary Change

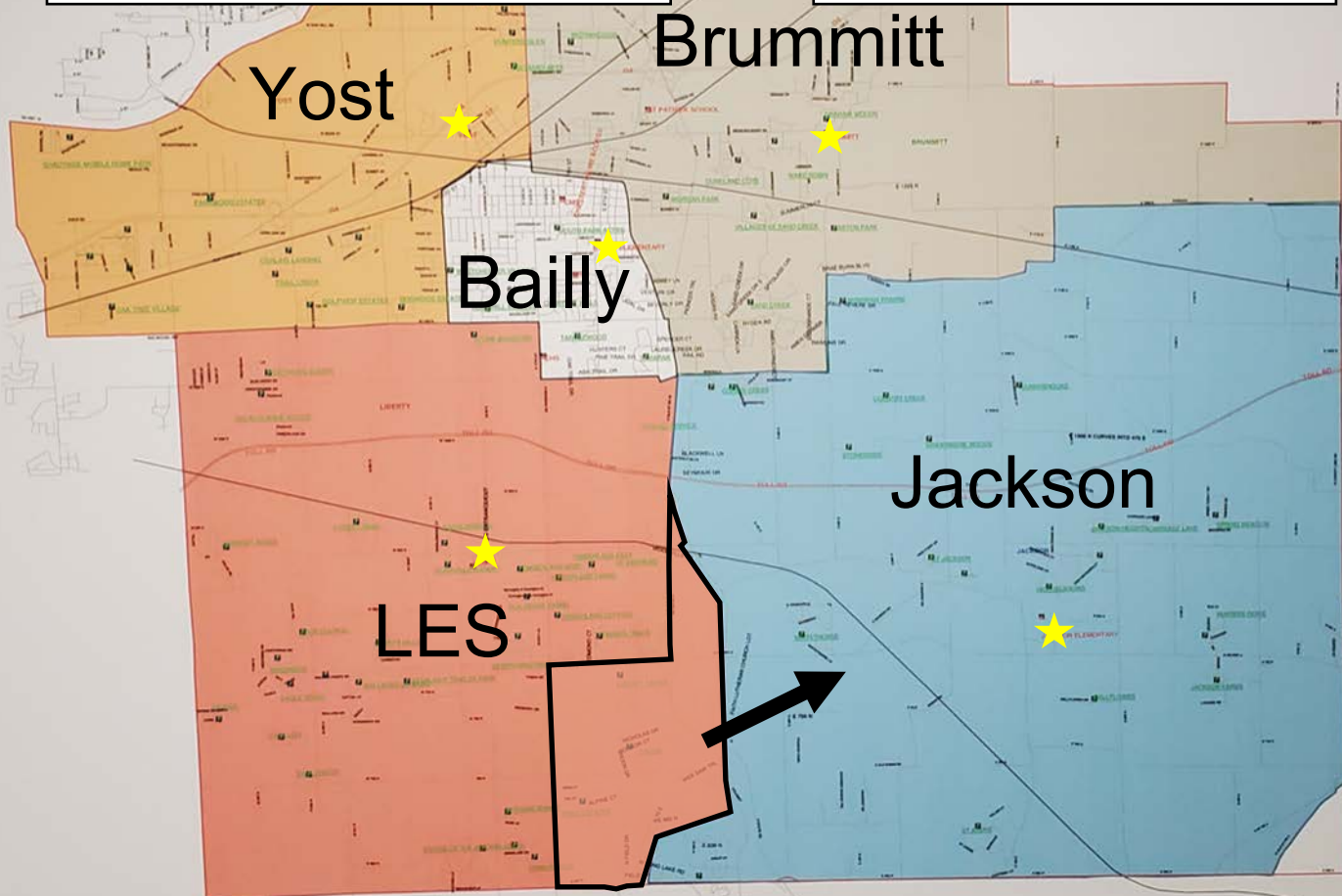


LES Subdivisions going to Jackson Elementary:

- Liberty Farm
- Pines Estates
- Troon
- Long Lake (West)

Student Impact:

- 56 Students
- 45 Families



Scenario 12 Overview:

- Move SE corner of current LES district to Jackson to relieve some enrollment pressure from LES

Enrollment	Current	New
• LES	488	432 (-56)
• Jackson	292	348 (+56)

SES	Current	New
• LES	30.12%	27.31%
• Jackson	13.01%	19.25%

SpEd	Current	New
• LES	17.01%	17.36%
• Jackson	13.36%	13.51%

Race	Current	New
• LES	8.61%	6.94%
• Jackson	5.14%	7.76%

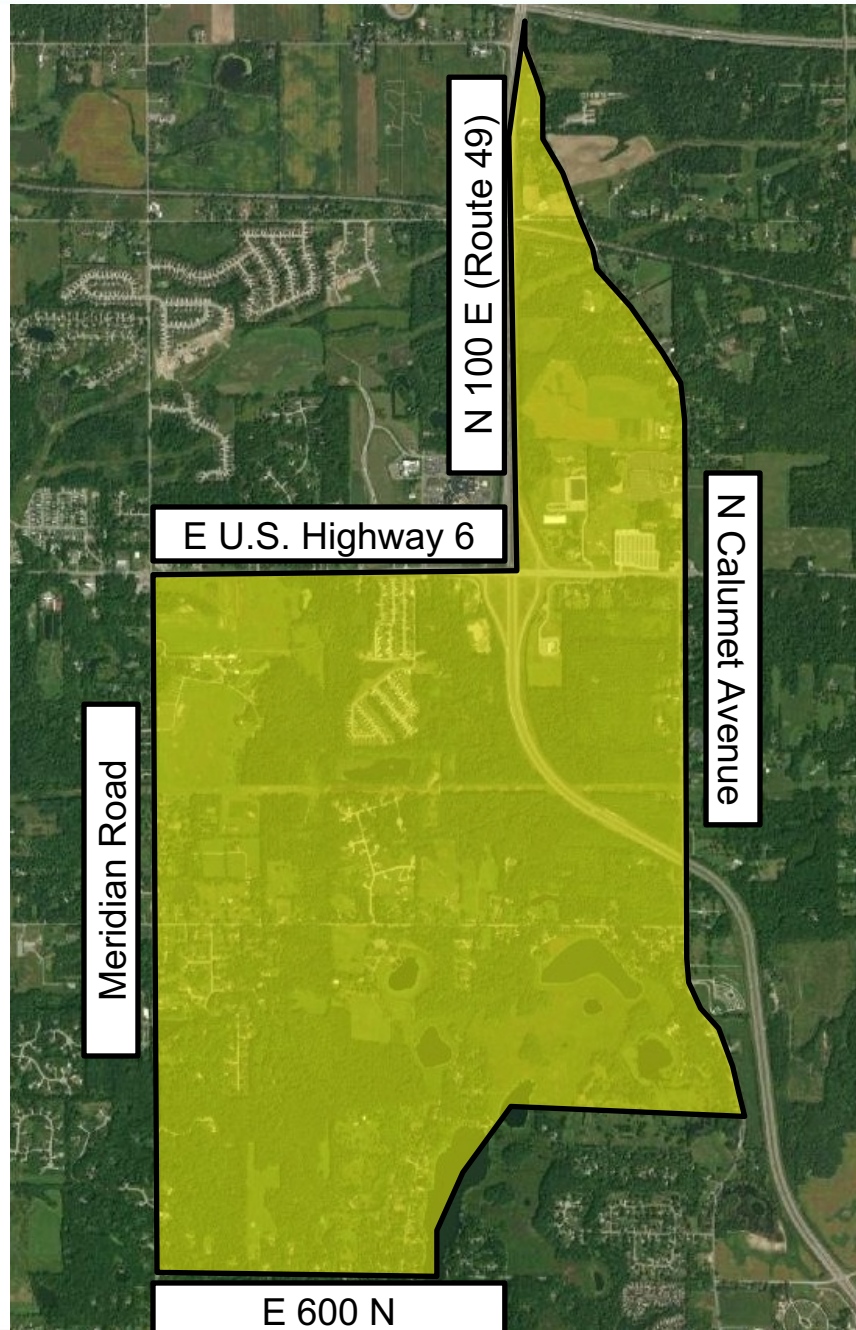
Ethnicity	Current	New
• LES	81.56%	81.25%
• Jackson	85.27%	85.06%



Boundaries

Driving Distance Increase (LES to Jackson)

- Liberty Farms – 1.6 Miles
- Troon – 1.7 Miles
- Pine Estates – 2.6 Miles
- Long Lake – 3 Miles



Enrollment Equity Committee Comments



Thank You!



Questions from the Board

