

2017-18 Enrollment for October 26, 2017

Day 45 - FINAL

School	PK	K	1st	2nd	3rd	4th	5th	6th	7th	8th	9th	10th	11th	12th	Total
Ballentine Elementary School	4	91	103	86	105	100	100								589
Chapin Elementary School	70	128	130	119	122	161									730
Chapin High School											384	349	348	300	1381
Chapin Intermediate School							412	446							858
Chapin Middle School								4	396	441					841
CrossRoads Intermediate School								751							751
Dutch Fork Elementary School	41	67	76	62	80	83	91								500
Dutch Fork High School											458	461	434	410	1763
Dutch Fork Middle School								4	537	525					1066
H E Corley Elementary School	106	67	90	70	90	87	78								588
Harbison West Elementary School	77	69	71	98	108	101	128								652
Irmo Elementary School	42	70	72	99	92	90	105								570
Irmo High School											334	341	341	339	1355
Irmo Middle School								112	400	379					891
Lake Murray Elementary School	3	151	226	196	203	188									967
Leaphart Elementary School	20	74	79	74	76	66	86								475
Nursery Road Elementary School	43	82	71	65	60	71	76								468
Oak Pointe Elementary School	20	95	93	100	106	106	113								633
River Springs Elementary School	43	79	82	88	81	94	98								565
Seven Oaks Elementary School	40	84	101	92	93	93	79								582
Spring Hill High School											292	287	234	239	1052
Total	509	1057	1194	1149	1216	1240	1366	1317	1333	1345	1468	1438	1357	1288	17277

All students registered in PowerSchool on Day 45 are included in this report regardless of funding status.

Data pulled from PowerSchool on 11/3/2017

2018-19 Enrollment for October 31, 2018

Day 45 - Final

School	PK	K	1st	2nd	3rd	4th	5th	6th	7th	8th	9th	10th	11th	12th	Total
Ballentine Elementary School	1	88	112	113	102	111	90								617
Chapin Elementary School	74	160	141	166	156	156									853
Chapin High School											411	384	340	340	1475
Chapin Intermediate School							397	473							870
Chapin Middle School								2	483	416					901
CrossRoads Intermediate School								819							819
Dutch Fork Elementary School	42	81	75	78	81	91	90								538
Dutch Fork High School											449	415	448	395	1707
Dutch Fork Middle School								3	491	544					1038
H E Corley Elementary School	126	80	63	92	70	89	85								605
Harbison West Elementary School	92	65	79	92	100	100	105								633
Irmo Elementary School	37	86	73	79	106	92	83								556
Irmo High School											333	320	340	313	1306
Irmo Middle School								138	397	389					924
Lake Murray Elementary School	4	171	155	207	191	196									924
Leaphart Elementary School	21	65	78	80	78	93	68								483
Nursery Road Elementary School	43	69	82	69	75	56	73								467
Oak Pointe Elementary School	21	76	100	92	105	103	100								597
River Springs Elementary School	40	70	77	79	88	82	94								530
Seven Oaks Elementary School	40	81	86	102	85	81	82								557
Spring Hill High School											293	278	266	224	1061
Grand Total	541	1092	1121	1249	1237	1250	1267	1435	1371	1349	1486	1397	1394	1272	17461

All students registered in PowerSchool on Day 45 are included in this report regardless of funding status.

Data pulled from PowerSchool at 5:09 PM on 11/8/2018

2019-20 Enrollment for October 24, 2019

Day 45 - Final

School	PK	K	1st	2nd	3rd	4th	5th	6th	7th	8th	9th	10th	11th	12th	Total
Ballentine Elementary School	4	111	101	118	125	116	104								679
Chapin Elementary School	78	140	164	146	169	160									857
Chapin High School											370	415	381	321	1487
Chapin Intermediate School							377	425							802
Chapin Middle School								3	513	494					1010
CrossRoads Intermediate School								723							723
Dutch Fork Elementary School	41	57	87	78	84	90	92								529
Dutch Fork High School											466	448	382	396	1692
Dutch Fork Middle School								5	511	495					1011
H E Corley Elementary School	120	94	85	61	93	69	108								630
Harbison West Elementary School	85	72	60	107	84	110	101								619
Irmo Elementary School	44	82	89	84	83	103	98								583
Irmo High School											366	310	307	280	1263
Irmo Middle School								137	467	412					1016
Lake Murray Elementary School	7	169	179	167	210	199									931
Leaphart Elementary School	20	63	72	81	91	76	82								485
Nursery Road Elementary School	43	58	68	84	70	78	62								463
Oak Pointe Elementary School	21	89	72	99	89	104	106								580
River Springs Elementary School	41	67	78	85	79	85	83								518
Seven Oaks Elementary School	41	66	89	90	89	83	88								546
Spring Hill High School											301	280	272	269	1122
Grand Total	545	1068	1144	1200	1266	1273	1301	1293	1491	1401	1503	1453	1342	1266	17546

All students registered in PowerSchool on Day 45 are included in this report regardless of funding status.

Data pulled from PowerSchool at 4:00 PM on 11/4/2019

2020-21 Enrollment for November 11, 2020

ALL STUDENTS

Day 45 - Final

School	PK	K	1st	2nd	3rd	4th	5th	6th	7th	8th	9th	10th	11th	12th	Total
Ballentine Elementary School	1	102	102	109	110	114	98								636
Chapin Elementary School	73	143	150	163	150	188									867
Chapin High School											413	364	405	367	1549
Chapin Intermediate School							401	407							808
Chapin Middle School								3	452	521					976
CrossRoads Intermediate School								708							708
Dutch Fork Elementary School	18	75	64	69	60	84	87								457
Dutch Fork High School											420	434	430	365	1649
Dutch Fork Middle School								4	451	514					969
H E Corley Elementary School	94	87	84	75	48	95	65								548
Harbison West Elementary School	63	71	65	81	99	85	103								567
Irmo Elementary School	24	92	88	81	85	73	108								551
Irmo High School											353	311	291	261	1216
Irmo Middle School								140	393	431					964
Lake Murray Elementary School	4	144	175	186	174	215									898
Leaphart Elementary School	14	65	65	70	63	85	73								435
Nursery Road Elementary School	32	65	62	57	72	67	69								424
Oak Pointe Elementary School	15	85	83	71	100	81	99								534
River Springs Elementary School	16	60	65	78	83	76	77								455
Seven Oaks Elementary School	27	62	59	72	75	87	81								463
Spring Hill High School											304	298	264	270	1136
Grand Total	381	1051	1062	1112	1119	1250	1261	1262	1296	1466	1490	1407	1390	1263	16810

All students registered in PowerSchool on Day 45 are included in this report regardless of funding status.

Enrollment data pulled from PowerSchool at 5:20 PM on 11/18/2020

2020-21 Enrollment for November 11, 2020

IN-PERSON

Day 45 - Final

School	PK	K	1st	2nd	3rd	4th	5th	6th	7th	8th	9th	10th	11th	12th	Total
Ballentine Elementary School	1	84	80	83	79	82	65								474
Chapin Elementary School	73	115	133	134	119	157									731
Chapin High School											342	306	359	330	1337
Chapin Intermediate School							333	338							671
Chapin Middle School								3	380	421					804
CrossRoads Intermediate School								436							436
Dutch Fork Elementary School	18	48	37	36	28	42	44								253
Dutch Fork High School											274	270	306	248	1098
Dutch Fork Middle School								3	301	312					616
H E Corley Elementary School	94	58	43	36	30	50	32								343
Harbison West Elementary School	63	45	39	46	61	44	59								357
Irmo Elementary School	24	78	60	58	59	49	63								391
Irmo High School											179	153	172	145	649
Irmo Middle School								94	204	230					528
Lake Murray Elementary School	4	118	148	152	149	180									751
Leaphart Elementary School	14	40	35	33	34	42	38								236
Nursery Road Elementary School	32	43	39	38	46	42	36								276
Oak Pointe Elementary School	15	66	60	52	74	61	70								398
River Springs Elementary School	16	46	52	59	65	49	54								341
Seven Oaks Elementary School	27	35	29	36	35	41	41								244
Spring Hill High School											248	228	211	234	921
Grand Total	381	776	755	763	779	839	835	874	885	963	1043	957	1048	957	11855

All students registered in PowerSchool on Day 45 are included in this report regardless of funding status.

Enrollment data pulled from PowerSchool at 5:20 PM on 11/18/2020
 Instructional model determined from schedule data pulled
 from PowerSchool at 3:45 PM on 11/20/2020

2020-21 Enrollment for November 11, 2020

FIVE

Day 45 - Final

School	PK	K	1st	2nd	3rd	4th	5th	6th	7th	8th	9th	10th	11th	12th	Total
Ballentine Elementary School		18	22	26	31	32	33								162
Chapin Elementary School		28	17	29	31	31									136
Chapin High School											71	58	46	37	212
Chapin Intermediate School							68	69							137
Chapin Middle School									72	100					172
CrossRoads Intermediate School								272							272
Dutch Fork Elementary School		27	27	33	32	42	43								204
Dutch Fork High School											146	164	124	117	551
Dutch Fork Middle School								1	150	202					353
H E Corley Elementary School		29	41	39	18	45	33								205
Harbison West Elementary School		26	26	35	38	41	44								210
Irmo Elementary School		14	28	23	26	24	45								160
Irmo High School											174	158	119	116	567
Irmo Middle School								46	189	201					436
Lake Murray Elementary School		26	27	34	25	35									147
Leaphart Elementary School		25	30	37	29	43	35								199
Nursery Road Elementary School		22	23	19	26	25	33								148
Oak Pointe Elementary School		19	23	19	26	20	29								136
River Springs Elementary School		14	13	19	18	27	23								114
Seven Oaks Elementary School		27	30	36	40	46	40								219
Spring Hill High School											56	70	53	36	215
Grand Total	0	275	307	349	340	411	426	388	411	503	447	450	342	306	4955

All students registered in PowerSchool on Day 45 are included in this report regardless of funding status.

Enrollment data pulled from PowerSchool at 5:20 PM on 11/18/2020
 Instructional model determined from schedule data pulled
 from PowerSchool at 3:45 PM on 11/20/2020

2021-22 Enrollment for October 21, 2021

ALL STUDENTS

Day 45 - Final

School	PK	K	1st	2nd	3rd	4th	5th	6th	7th	8th	9th	10th	11th	12th	Total
Ballentine Elementary School	3	67	100	100	94	93	105								562
Chapin Elementary School	81	119	140	124	153	117									734
Chapin High School											419	421	361	391	1592
Chapin Intermediate School							440	465							905
Chapin Middle School								1	460	483					944
CrossRoads Intermediate School								701							701
Dutch Fork Elementary School	39	70	81	65	70	67	86								478
Dutch Fork High School											492	431	403	383	1709
Dutch Fork Middle School								4	457	467					928
H E Corley Elementary School	110	75	90	81	83	59	86								584
Harbison West Elementary School	77	77	71	92	70	97	87								571
Irmo Elementary School	21	73	94	88	81	99	68								524
Irmo High School											458	315	309	255	1337
Irmo Middle School								124	439	402					965
Lake Murray Elementary School	4	145	142	174	165	171									801
Leaphart Elementary School	20	69	69	68	74	72	98								470
Nursery Road Elementary School	39	71	76	67	59	71	72								455
Oak Pointe Elementary School	21	64	93	79	71	108	90								526
Piney Woods Elementary School	3	82	82	81	87	85									420
River Springs Elementary School	20	58	61	70	82	89	73								453
Seven Oaks Elementary School	42	68	74	81	75	73	91								504
Spring Hill High School											302	293	273	250	1118
Grand Total	480	1038	1173	1170	1164	1201	1296	1295	1356	1352	1671	1460	1346	1279	17281

All students registered in PowerSchool on Day 45 are included in this report regardless of funding status.

Data pulled from PowerSchool at 3:00 PM on 10/29/2021

2021-22 Enrollment for October 21, 2021

IN-PERSON

Day 45 - Final

School	PK	K	1st	2nd	3rd	4th	5th	6th	7th	8th	9th	10th	11th	12th	Total
Ballentine Elementary School	3	67	97	94	89	85	99								534
Chapin Elementary School	81	119	138	123	145	113									719
Chapin High School											411	407	349	380	1547
Chapin Intermediate School							428	451							879
Chapin Middle School								1	447	460					908
CrossRoads Intermediate School								638							638
Dutch Fork Elementary School	39	70	79	62	63	62	77								452
Dutch Fork High School											470	411	380	359	1620
Dutch Fork Middle School								4	426	437					867
H E Corley Elementary School	110	75	86	78	77	53	85								564
Harbison West Elementary School	77	77	67	91	67	89	81								549
Irmo Elementary School	21	73	93	84	80	92	64								507
Irmo High School											427	296	287	235	1245
Irmo Middle School								121	412	369					902
Lake Murray Elementary School	4	145	138	169	160	170									786
Leaphart Elementary School	20	69	66	65	67	68	92								447
Nursery Road Elementary School	39	71	74	63	55	68	67								437
Oak Pointe Elementary School	21	64	89	78	70	105	86								513
Piney Woods Elementary School	3	82	80	81	87	84									417
River Springs Elementary School	20	58	61	69	80	88	68								444
Seven Oaks Elementary School	42	68	70	71	69	66	78								464
Spring Hill High School											302	292	266	242	1102
Grand Total	480	1038	1138	1128	1109	1143	1225	1215	1285	1266	1610	1406	1282	1216	16541

All students registered in PowerSchool on Day 45 are included in this report regardless of funding status.

Data pulled from PowerSchool at 3:00 PM on 10/29/2021

2021-22 Enrollment for October 21, 2021

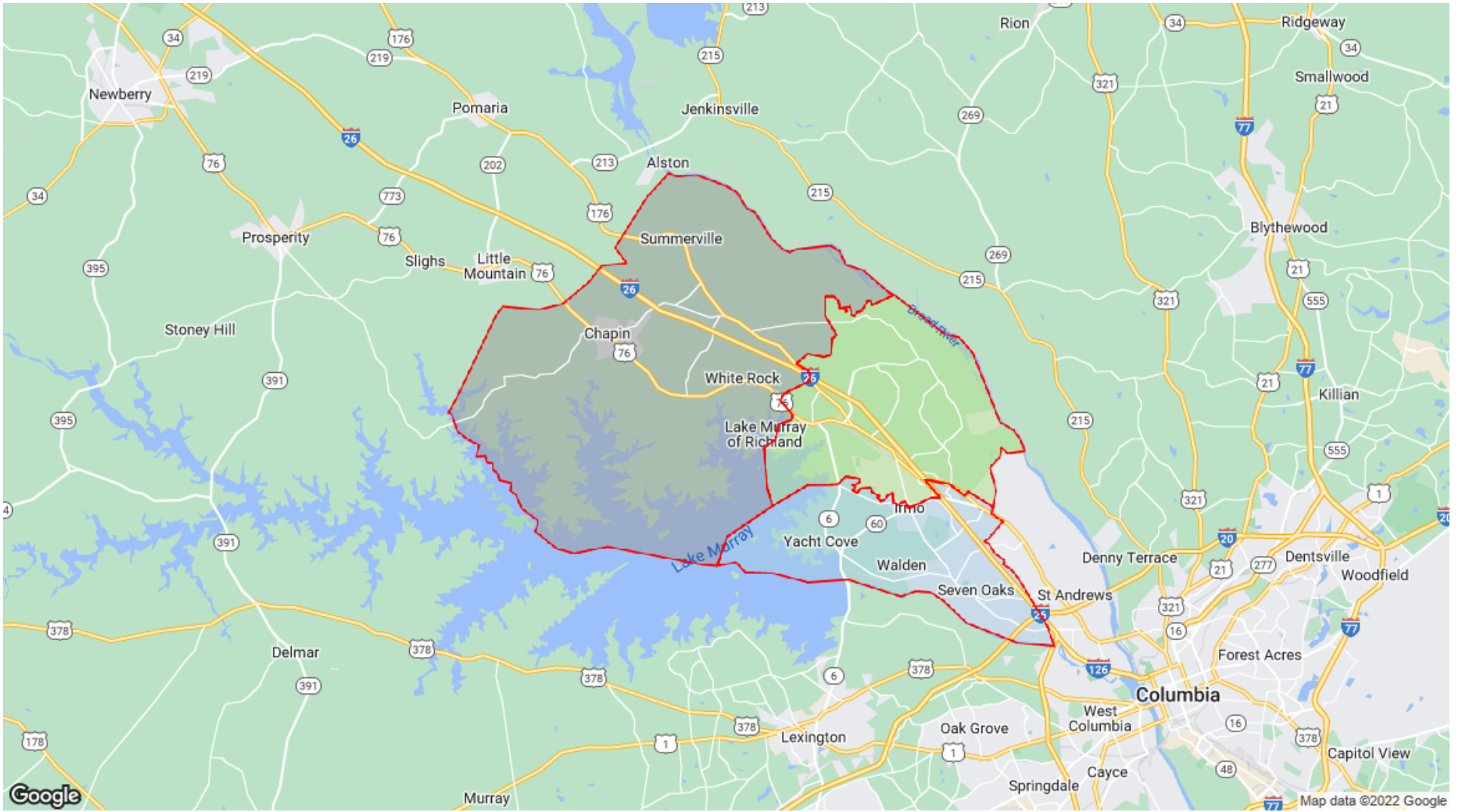
FIVE

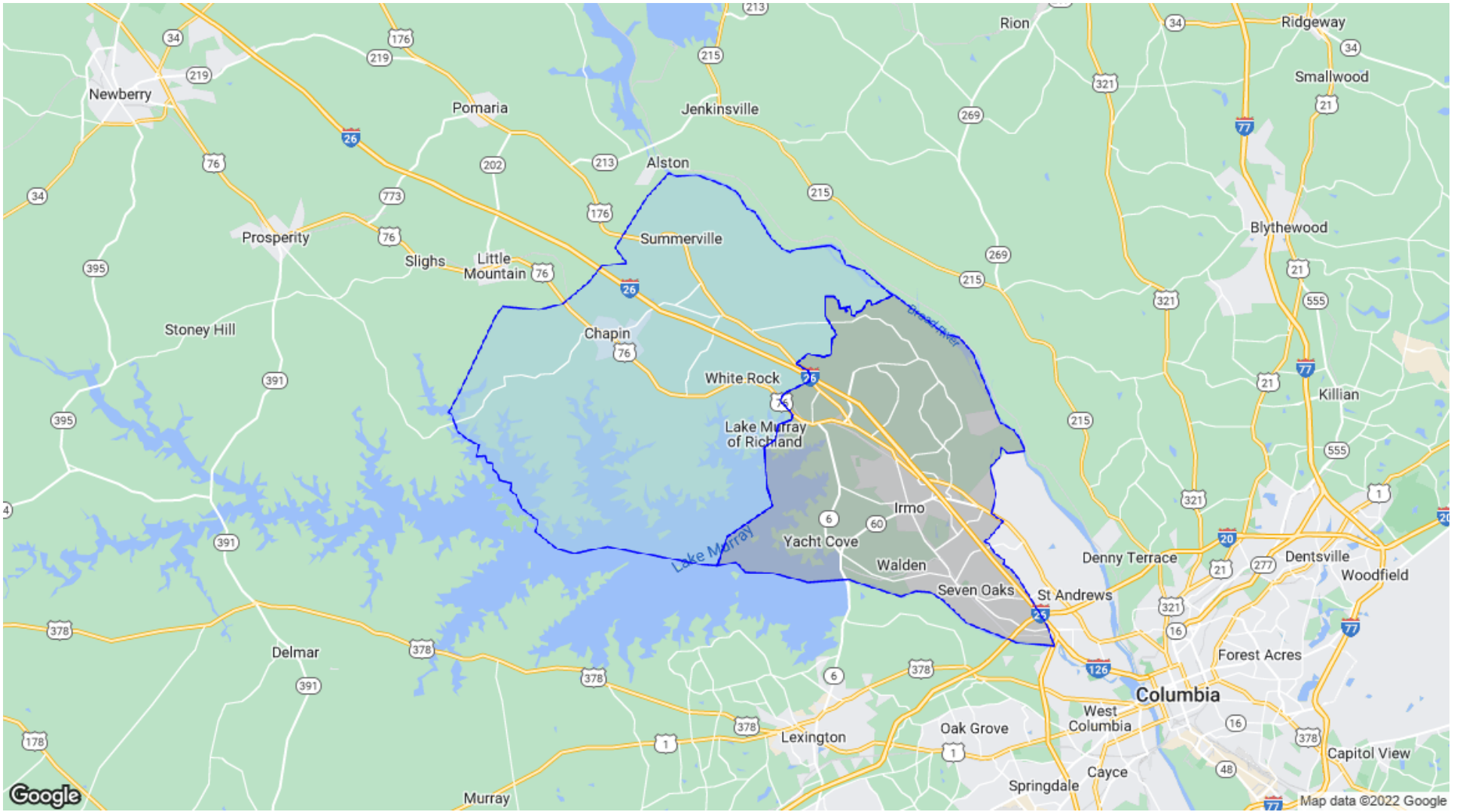
Day 45 - Final

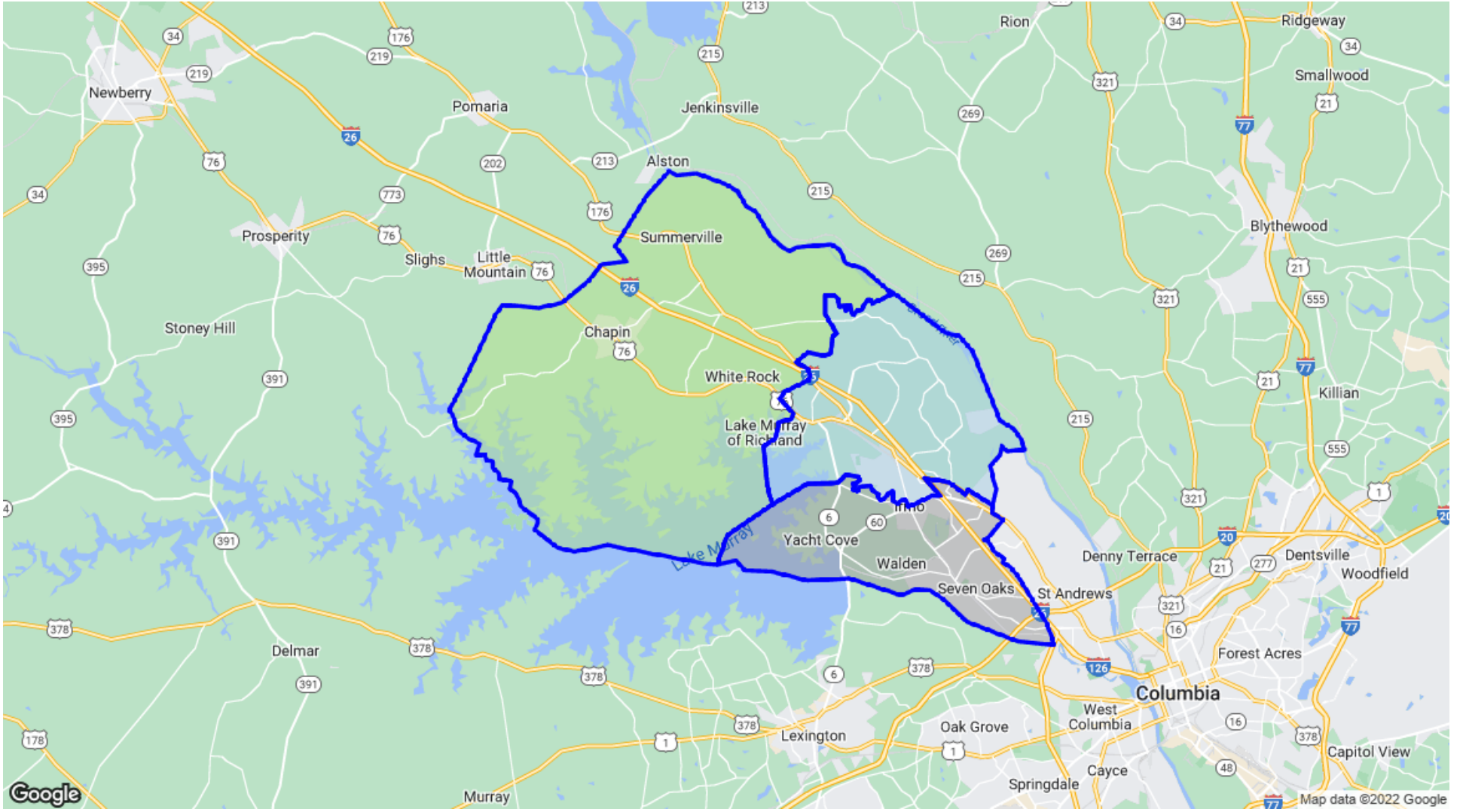
School	PK	K	1st	2nd	3rd	4th	5th	6th	7th	8th	9th	10th	11th	12th	Total
Ballentine Elementary School			3	6	5	8	6								28
Chapin Elementary School			2	1	8	4									15
Chapin High School											8	14	12	11	45
Chapin Intermediate School							12	14							26
Chapin Middle School									13	23					36
CrossRoads Intermediate School								63							63
Dutch Fork Elementary School			2	3	7	5	9								26
Dutch Fork High School											22	20	23	24	89
Dutch Fork Middle School									31	30					61
H E Corley Elementary School			4	3	6	6	1								20
Harbison West Elementary School			4	1	3	8	6								22
Irmo Elementary School			1	4	1	7	4								17
Irmo High School											31	19	22	20	92
Irmo Middle School								3	27	33					63
Lake Murray Elementary School			4	5	5	1									15
Leaphart Elementary School			3	3	7	4	6								23
Nursery Road Elementary School			2	4	4	3	5								18
Oak Pointe Elementary School			4	1	1	3	4								13
Piney Woods Elementary School			2			1									3
River Springs Elementary School				1	2	1	5								9
Seven Oaks Elementary School			4	10	6	7	13								40
Spring Hill High School												1	7	8	16
Grand Total	0	0	35	42	55	58	71	80	71	86	61	54	64	63	740

All students registered in PowerSchool on Day 45 are included in this report regardless of funding status.

Data pulled from PowerSchool at 3:00 PM on 10/29/2021







School District Five of Lexington and Richland Counties
 School Building Information

School	Year Built (original)	Square Feet	Capacity	Enrollment (2017)
Elementary				
Ballentine Elementary	2002	106,731	819	623
Chapin Elementary	1977	131,950	916	651
Dutch Fork Elementary	1953	95,182	657	506
HE Corley Elementary	1990	105,944	733	495
Harbison West Elementary	1982	115,000	710	592
Irmo Elementary	1933	121,000	640	486
Lake Murray Elementary	1997	102,842	849	994
Leaphart Elementary	1975	120,500	814	427
Nursery Road Elementary	1980	110,000	777	418
Oak Pointe Elementary	2007	110,396	756	615
Piney Woods Elementary	2021	112,316	750	
River Springs Elementary	1997	99,899	925	541
Seven Oaks Elementary	1966	103,756	640	593

Intermediate				
Chapin Intermediate	1,991	177,433	1018	759
CrossRoads Intermediate	1971	148,194	1098	803

Middle				
Chapin Middle	2015	141,070	1200	866
Dutch Fork Middle	1998	142,901	1,149	1034
Irmo Middle	1977	233,000	1181	891

High				
Chapin High	1971	375,500	1700	1315
Dutch Fork High	1993	368,788	2207	1708
Irmo High	1964	396,121	2141	1413
Spring Hill High	2013	287,000	1700	1092
CATE	2012	115,000	1200	

Abbr	Latitude	Longitude
AFS	34.16655	-81.2735
BES	34.12918	-81.2356
CATS	34.16517	-81.2717
CES	34.13797	-81.3444
CHS	34.16725	-81.34
CIS	34.13913	-81.3419
CMS	34.16896	-81.2768
CRIS	34.07395	-81.1772
DFES	34.10554	-81.1862
DFHS	34.15264	-81.1993
DFMS	34.15179	-81.2036
DO	34.12461	-81.2168
HECES	34.1077	-81.2092
HWES	34.08375	-81.1657
IES	34.08445	-81.1844
IHS	34.06725	-81.1717
IMS	34.07012	-81.1768
LES	34.05298	-81.1562
LMES	34.1333	-81.2803
NRES	34.0617	-81.1905
OPES	34.14535	-81.1652
PWES	34.13577	-81.3828
RSES	34.13655	-81.1778
SHHS	34.16655	-81.2735
SOES	34.04358	-81.126