

LEA Name : Souderton Area SD
Address : 760 Lower Road
Souderton , PA 18964

County : Montgomery
AUN Number : 123467103
LEA Type : SD

Annual Financial Report
Accuracy Certification Statement

For Fiscal Year Ending
6/30/2023


Pennsylvania Department of Education
&
Office of Comptroller Operations

PDE-2056: Intermediate Unit
PDE-2057: School District, AVTS/CTC, Charter School,
and Special Program Jointure

CERTIFICATION: By signing this page I agree that the electronic data submitted is a complete and accurate statement of the financial operations and status of the local education agency for the fiscal year. It has been prepared in accordance with generally accepted accounting principles and established Commonwealth of PA reporting guidelines.



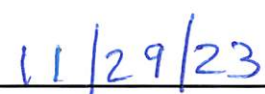
Chief School Administrator Signature



Date



Board Secretary Signature



Date

Michael Taylor

Contact Person

mtaylor@soudertonsd.org

Contact Person E-mail Address

(215)723-6061

Ext :

Contact Person Telephone Number

Contact Person Fax Number

Audit Certification
Annual Financial Report:
For Fiscal Year Ending **6/30/2023**
(Pursuant to PA School Code Section 218(b))

LEA Name : Souderton Area SD
AUN Number : 123467103
County : Montgomery

Audit Certification Due: 12/31/2023

This certification is applicable to the Annual Financial Report data submitted through the Consolidated Financial Reporting System (CFRS).

CERTIFICATION: By signing this page I agree that the financial statements of the school have been properly audited as noted above pursuant to Article XXIV, and in the auditor's professional opinion, the Annual Financial Report (PDE-2057) submitted through CFRS is materially consistent with the audited financial statements.

Chief School Administrator



Signature

11/29/23

Date

Board Secretary



Signature

11/29/23

Date

Michael Taylor

Contact Person

mtaylor@soudertonsd.org

Contact Person E-mail Address

(215)723-6061

Ext :

Contact Person Telephone Number

Contact Person Fax Number

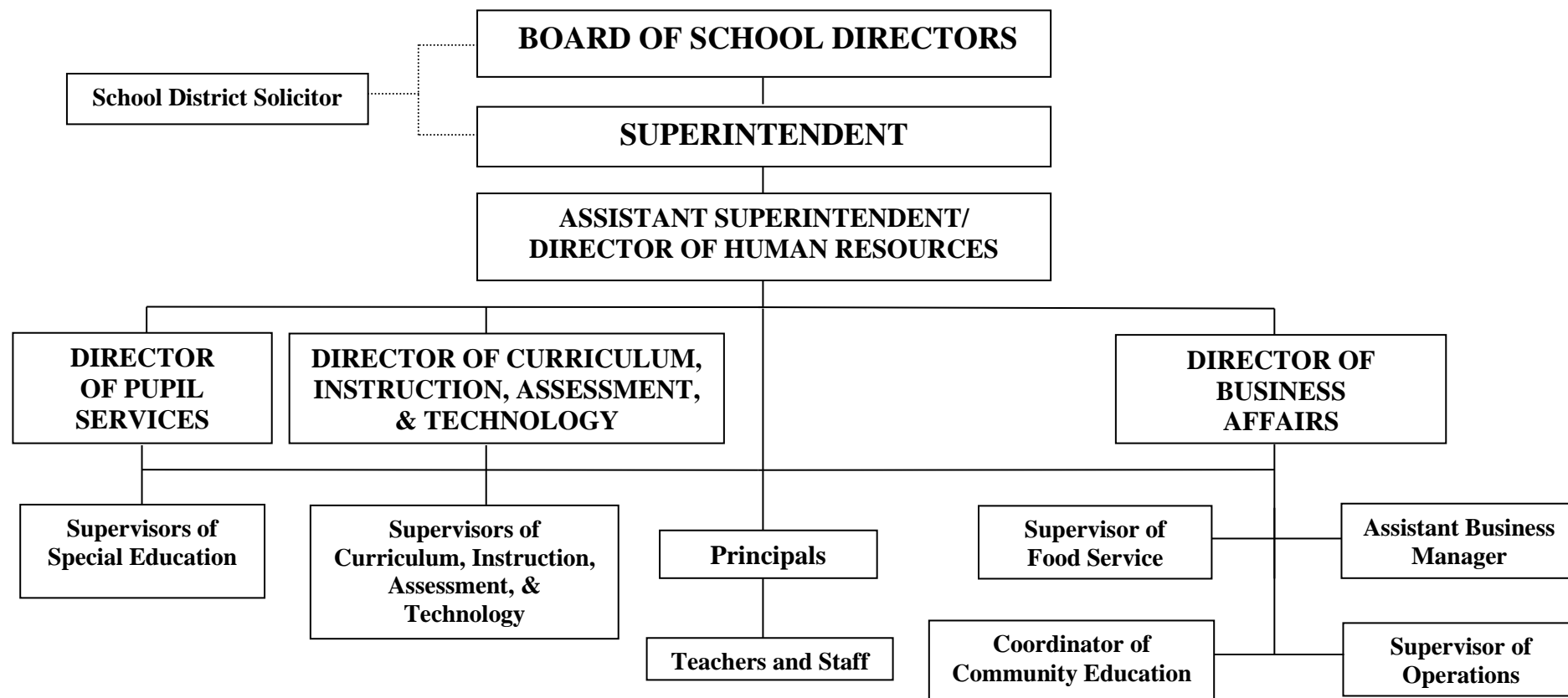
SECTION: LOCAL BOARD PROCEDURES

TITLE: ORGANIZATIONAL CHART

ADOPTED: June 27, 2971

REVISED: August 26, 2021

SOUDERTON AREA SCHOOL DISTRICT



In the absence of the Superintendent, the Assistant Superintendent assumes the role of the Superintendent.



Book	Policy Manual
Section	600 Finances
Title	GASB Statement 34
Code	622
Status	Active
Adopted	March 26, 2002

Purpose

The Board recognizes the need to implement the required accounting and financial reporting standards stipulated by the Pennsylvania Department of Education (PDE).[\[1\]](#)

The primary objectives of implementing GASB Statement Number 34 are to assure compliance with state requirements and to properly account for both the financial and economic resources of the school entity.

Authority

Participation of the school entity in any such activity shall be in accordance with Board policy.

Delegation of Responsibility

The responsibility to coordinate the compilation and preparation of all information necessary to implement this policy is delegated to the Director of Business Affairs.

The Director of Business Affairs shall be responsible for implementation of the necessary administrative procedures to establish and maintain a fixed asset inventory, including depreciation schedules. Depreciation shall be computed on a straight-line basis over the useful lives of the assets using an averaging convention. Normal maintenance and repairs shall be charged to expense as incurred, major renewals and betterments that materially extend the life or increase the value of the asset shall be capitalized. A schedule of accumulated depreciation shall be consistent from year to year. The basis for depreciation, including groups of assets and useful lives shall be done in writing and submitted for review to the independent local auditors.

The Director of Business Affairs shall prepare the required Management's Discussion and Analysis (MD&A). The MD&A shall be in the form required by GASB Statement Number 34 and shall be submitted to the Superintendent for review prior to publication.

Prior to submission of the MD&A for the Superintendent's review, the school entity's independent auditors shall review the MD&A in accordance with SAS No. 52, "Required Supplementary Information".

Guidelines

In order to associate debt with acquired assets and to avoid net asset deficits, any asset that has been acquired with debt proceeds shall be capitalized regardless of the cost of the asset. The asset life of these assets shall be considered relative to the time of the respective debt amortizations.

For all other assets not acquired by debt proceeds, the dollar value of any single item for inclusion in the fixed assets accounts shall not be less than \$4,000. The capitalization threshold shall be set at a level that will capture at least 80% of all fixed assets.

The following assets do not normally individually meet capitalization threshold criteria: library books, classroom texts, computer equipment, classroom furniture. These asset category costs shall be capitalized and depreciated as groups when that group's acquisition cost exceeds \$10,000 in any given fiscal year.

For group asset depreciation purposes, the estimated useful life of the group may be based on the weighted average or simple average of the useful life of individual items or on an assessment of the life of the group as a whole. Periodically, the school entity shall review the estimated life of groups of assets and adjust the remaining depreciation life of the group.

Assets that fall below the capitalization threshold for GASB Statement Number 34 reporting purposes may still be significant for insurance, warranty service, and obsolescence or replacement policy tracking purposes. The school entity may record and maintain these non-GASB Statement Number 34 asset inventories in subsidiary ledgers.

Legal

[1. 24 P.S. 613](#)

<u>Val Number</u>	<u>Description</u>	<u>Justification</u>
30219	<p>New Governmental Fund Lease/Other Right-To-Use Arrangement proceeds have been reported in revenue code 9220. However, comparable entries for the initial capital outlay expenditure have not been reported in object 730. Please correct or provide a justification.</p> <p>Govt Fund Revenue Detail - code 9220: \$167,263.59 Govt Fund Expenditure Detail - Object Code 730: \$214,014.59</p>	<p>The difference is for IT software which was paid in full and not financed so no need to record in 9220, per our local auditors.</p>
50160	<p>SOIN: All Governmental Fund General Obligation Bonds must include an amount for Interest Paid during Fiscal Year. Correct data or enter a justification.</p>	<p>Bond 2023 was new in the 22-23 school year and nothing needed to be paid</p>

LEA : 123467103 Souderton Area SD

Printed 11/30/2023 3:31:30 PM

Amounts Expressed in Whole Dollars		<u>General Fund</u> <u>(10)</u>	<u>Student Sponsored</u> <u>Activity Fund</u> <u>(21)</u>	<u>Public Purpose Trust</u> <u>(27)</u>	<u>Other Compt Approved</u> <u>(28)</u>	<u>Athletic / Activity</u> <u>(29)</u>
Assets And Deferred Outflows Of Resources						
Assets						
0100	Cash and Cash Equivalents	14,229,843				
0110	Investments					
0120	Taxes Receivable	1,262,849				
0130	Due From Other Funds	95,050				
0141	Due From Other Governments	5,113,810				
0142	State Revenue Receivable					
0143	Federal Revenue Receivable					
0145	Other Intergovernmental Revenue Receivable					
0146	Due from Primary Government					
0147	Due from Component Unit					
0150	Other Receivables	92,159				
0170	Inventories					
0180	Prepaid Expenses (Expenditures)	212,150				
0190	Other Current Assets					
Total Assets		\$21,005,861				
0910	Deferred Outflows of Resources					
Total Assets And Deferred Outflows Of Resources		\$21,005,861				

LEA : 123467103 Souderton Area SD

Printed 11/30/2023 3:31:30 PM

Amounts Expressed in Whole Dollars		<u>Capital Reserve (690.</u> <u>1850)</u> <u>(31)</u>	<u>Capital Reserve (1431)</u> <u>(32)</u>	<u>Other Capital Projects</u> <u>Fund</u> <u>(39)</u>	<u>Debt Service</u> <u>(40)</u>	<u>Permanent</u> <u>(90)</u>
Assets And Deferred Outflows Of Resources						
Assets						
0100	Cash and Cash Equivalents			29,505,050		
0110	Investments					
0120	Taxes Receivable					
0130	Due From Other Funds					
0141	Due From Other Governments					
0142	State Revenue Receivable					
0143	Federal Revenue Receivable					
0145	Other Intergovernmental Revenue Receivable					
0146	Due from Primary Government					
0147	Due from Component Unit					
0150	Other Receivables					
0170	Inventories					
0180	Prepaid Expenses (Expenditures)					
0190	Other Current Assets					
Total Assets				\$29,505,050		
0910	Deferred Outflows of Resources					
Total Assets And Deferred Outflows Of Resources				\$29,505,050		

LEA : 123467103 Souderton Area SD

Printed 11/30/2023 3:31:30 PM

Amounts Expressed in Whole Dollars		<u>Total Governmental</u> <u>Funds</u>
Assets And Deferred Outflows Of Resources		
Assets		
0100 Cash and Cash Equivalents	43,734,893	
0110 Investments		
0120 Taxes Receivable	1,262,849	
0130 Due From Other Funds	95,050	
0141 Due From Other Governments	5,113,810	
0142 State Revenue Receivable		
0143 Federal Revenue Receivable		
0145 Other Intergovernmental Revenue Receivable		
0146 Due from Primary Government		
0147 Due from Component Unit		
0150 Other Receivables	92,159	
0170 Inventories		
0180 Prepaid Expenses (Expenditures)	212,150	
0190 Other Current Assets		
Total Assets	\$50,510,911	
0910 Deferred Outflows of Resources		
Total Assets And Deferred Outflows Of Resources	\$50,510,911	

LEA : 123467103 Souderton Area SD

Printed 11/30/2023 3:31:30 PM

Amounts Expressed in Whole Dollars		<u>General Fund</u> <u>(10)</u>	<u>Student Sponsored</u> <u>Activity Fund</u> <u>(21)</u>	<u>Public Purpose Trust</u> <u>(27)</u>	<u>Other Compt Approved</u> <u>(28)</u>	<u>Athletic / Activity</u> <u>(29)</u>
Liabilities And Deferred Inflows Of Resources And Fund Balances						
Liabilities						
0400	Due to Other Funds	1,825,944				
0411	Due to Other Governments	529,480				
0412	Due to Primary Government					
0413	Due to Component Unit					
0420	Accounts Payable	621,610				
0430	Contracts Payable					
0440	Current Portion of Long-Term Debt	221,659				
0450	Short-Term Payables					
0461	Accrued Salaries and Benefits	415,565				
0462	Payroll Deductions and Withholding	7,517,959				
0480	Unearned Revenues					
0490	Other Current Liabilities	443,647				
Total Liabilities		\$11,575,864				
0950	Deferred Inflows of Resources	966,218				
Fund Balances						
0810	Nonspendable Fund Balance	140,559				
0820	Restricted Fund Balance	177,916				
0830	Committed Fund Balance	1,000,000				
0840	Assigned Fund Balance	2,131,053				
0850	Unassigned Fund Balance	5,014,251				
Total Fund Balances		\$8,463,779				
Total Liabilities, Deferred Inflows Of Resources And Fund Balances		\$21,005,861				

LEA : 123467103 Souderton Area SD

Printed 11/30/2023 3:31:30 PM

Amounts Expressed in Whole Dollars		<u>Capital Reserve (690.</u> <u>1850)</u> <u>(31)</u>	<u>Capital Reserve (1431)</u> <u>(32)</u>	<u>Other Capital Projects</u> <u>Fund</u> <u>(39)</u>	<u>Debt Service</u> <u>(40)</u>	<u>Permanent</u> <u>(90)</u>
Liabilities And Deferred Inflows Of Resources And Fund Balances						
Liabilities						
0400	Due to Other Funds					
0411	Due to Other Governments					
0412	Due to Primary Government					
0413	Due to Component Unit					
0420	Accounts Payable			2,194,982		
0430	Contracts Payable					
0440	Current Portion of Long-Term Debt					
0450	Short-Term Payables					
0461	Accrued Salaries and Benefits					
0462	Payroll Deductions and Withholding					
0480	Unearned Revenues					
0490	Other Current Liabilities					
Total Liabilities				\$2,194,982		
0950	Deferred Inflows of Resources					
Fund Balances						
0810	Nonspendable Fund Balance					
0820	Restricted Fund Balance			27,310,068		
0830	Committed Fund Balance					
0840	Assigned Fund Balance					
0850	Unassigned Fund Balance					
Total Fund Balances				\$27,310,068		
Total Liabilities, Deferred Inflows Of Resources And Fund Balances				\$29,505,050		

LEA : 123467103 Souderton Area SD

Printed 11/30/2023 3:31:30 PM

Amounts Expressed in Whole Dollars		<u>Total Governmental</u> <u>Funds</u>
Liabilities And Deferred Inflows Of Resources And Fund Balances		
Liabilities		
0400 Due to Other Funds		1,825,944
0411 Due to Other Governments		529,480
0412 Due to Primary Government		
0413 Due to Component Unit		
0420 Accounts Payable		2,816,592
0430 Contracts Payable		
0440 Current Portion of Long-Term Debt		221,659
0450 Short-Term Payables		
0461 Accrued Salaries and Benefits		415,565
0462 Payroll Deductions and Withholding		7,517,959
0480 Unearned Revenues		
0490 Other Current Liabilities		443,647
Total Liabilities		\$13,770,846
0950 Deferred Inflows of Resources		966,218
Fund Balances		
0810 Nonspendable Fund Balance		140,559
0820 Restricted Fund Balance		27,487,984
0830 Committed Fund Balance		1,000,000
0840 Assigned Fund Balance		2,131,053
0850 Unassigned Fund Balance		5,014,251
Total Fund Balances		\$35,773,847
Total Liabilities, Deferred Inflows Of Resources And Fund Balances		\$50,510,911

Amounts Expressed in Whole Dollars	<u>General Fund</u> <u>(10)</u>	<u>Student Sponsored</u> <u>Activity Fund</u> <u>(21)</u>	<u>Public Purpose Trust</u> <u>(27)</u>	<u>Other Compt Approved</u> <u>(28)</u>	<u>Athletic / Activity</u> <u>(29)</u>
Revenues					
6000 Revenue from Local Sources	106,151,505				
7000 Revenue from State Sources	33,675,808				
8000 Revenue from Federal Sources	2,119,083				
Total Revenues	\$141,946,396				
Expenditures					
1000 Instruction	90,880,570				
2000 Support Services	41,939,629				
3000 Operation of Non-Instructional Services	1,901,525				
4000 Facilities Acquisition, Construction and Improvement Services	77,445				
5110 Debt Service	11,317,475				
5130 Refund of Prior Year Revenues / Receipts					
5140 Leases and Other Right-to-Use Arrangements	89,514				
Total Expenditures	\$146,206,158				
Excess (Deficiency) Of Revenues Over Expenditures	(\$4,259,762)				
Other Financing Sources (Uses)					
9110 Face Value of Bonds Issued					
9120 Proceeds from Refunding of Bonds					
9130 Bond Premiums					
9200 Proceeds from Extended Term Financing, Leases, and Other Right-to-Use Arrangements	167,264				
9300 Interfund Transfers - IN					
9400 Sale of or Compensation for Loss of Fixed Assets					
9710 Transfers from Component Units					
9720 Transfers from Primary Governments					
9910 Other Financing Sources Not Listed in the 9000 Series					
9990 Insurance Recoveries	2,575				
5120 Debt Service – Refunded Bonds					
5150 Bond Discounts					
5200 Interfund Transfers – Out					
5300 Transfers Out to Component Units/Primary Governments					
Total Other Financing Sources (Uses)	\$169,839				

Amounts Expressed in Whole Dollars		<u>Capital Reserve (690.</u> <u>1850)</u> <u>(31)</u>	<u>Capital Reserve (1431)</u> <u>(32)</u>	<u>Other Capital Projects</u> <u>Fund</u> <u>(39)</u>	<u>Debt Service</u> <u>(40)</u>	<u>Permanent</u> <u>(90)</u>
Revenues						
6000	Revenue from Local Sources			1,397,100		
7000	Revenue from State Sources					
8000	Revenue from Federal Sources					
Total Revenues				\$1,397,100		
Expenditures						
1000	Instruction					
2000	Support Services			303,520		
3000	Operation of Non-Instructional Services					
4000	Facilities Acquisition, Construction and Improvement Services			23,403,614		
5110	Debt Service					
5130	Refund of Prior Year Revenues / Receipts					
5140	Leases and Other Right-to-Use Arrangements					
Total Expenditures				\$23,707,134		
Excess (Deficiency) Of Revenues Over Expenditures				(\$22,310,034)		
Other Financing Sources (Uses)						
9110	Face Value of Bonds Issued			9,999,459		
9120	Proceeds from Refunding of Bonds					
9130	Bond Premiums					
9200	Proceeds from Extended Term Financing, Leases, and Other Right-to-Use Arrangements					
9300	Interfund Transfers - IN					
9400	Sale of or Compensation for Loss of Fixed Assets					
9710	Transfers from Component Units					
9720	Transfers from Primary Governments					
9910	Other Financing Sources Not Listed in the 9000 Series					
9990	Insurance Recoveries					
5120	Debt Service – Refunded Bonds					
5150	Bond Discounts					
5200	Interfund Transfers – Out					
5300	Transfers Out to Component Units/Primary Governments					
Total Other Financing Sources (Uses)				\$9,999,459		

Amounts Expressed in Whole Dollars		<u>Total Governmental Funds</u>
Revenues		
6000	Revenue from Local Sources	107,548,605
7000	Revenue from State Sources	33,675,808
8000	Revenue from Federal Sources	2,119,083
Total Revenues		\$143,343,496
Expenditures		
1000	Instruction	90,880,570
2000	Support Services	42,243,149
3000	Operation of Non-Instructional Services	1,901,525
4000	Facilities Acquisition, Construction and Improvement Services	23,481,059
5110	Debt Service	11,317,475
5130	Refund of Prior Year Revenues / Receipts	
5140	Leases and Other Right-to-Use Arrangements	89,514
Total Expenditures		\$169,913,292
Excess (Deficiency) Of Revenues Over Expenditures		(\$26,569,796)
Other Financing Sources (Uses)		
9110	Face Value of Bonds Issued	9,999,459
9120	Proceeds from Refunding of Bonds	
9130	Bond Premiums	
9200	Proceeds from Extended Term Financing, Leases, and Other Right-to-Use Arrangements	167,264
9300	Interfund Transfers - IN	
9400	Sale of or Compensation for Loss of Fixed Assets	
9710	Transfers from Component Units	
9720	Transfers from Primary Governments	
9910	Other Financing Sources Not Listed in the 9000 Series	
9990	Insurance Recoveries	2,575
5120	Debt Service – Refunded Bonds	
5150	Bond Discounts	
5200	Interfund Transfers – Out	
5300	Transfers Out to Component Units/Primary Governments	
Total Other Financing Sources (Uses)		\$10,169,298

Amounts Expressed in Whole Dollars		<u>General Fund</u> <u>(10)</u>	<u>Student Sponsored</u> <u>Activity Fund</u> <u>(21)</u>	<u>Public Purpose Trust</u> <u>(27)</u>	<u>Other Compt Approved</u> <u>(28)</u>	<u>Athletic / Activity</u> <u>(29)</u>
Special And Extraordinary Items						
9920	Special Items – Gains					
9930	Extraordinary Items – Gains					
5520	Special Items – Losses					
5530	Extraordinary Items – Losses					
Net Change In Fund Balances		(\$4,089,923)				
Fund Balance						
0001	Fund Balance - Beginning of Fiscal Year	12,553,699				
Fund Balance - End Of Year		\$8,463,776				

Amounts Expressed in Whole Dollars		<u>Capital Reserve (690.</u> <u>1850)</u> <u>(31)</u>	<u>Capital Reserve (1431)</u> <u>(32)</u>	<u>Other Capital Projects</u> <u>Fund</u> <u>(39)</u>	<u>Debt Service</u> <u>(40)</u>	<u>Permanent</u> <u>(90)</u>
Special And Extraordinary Items						
9920	Special Items – Gains					
9930	Extraordinary Items – Gains					
5520	Special Items – Losses					
5530	Extraordinary Items – Losses					
Net Change In Fund Balances				(\$12,310,575)		
Fund Balance						
0001	Fund Balance - Beginning of Fiscal Year			39,620,645		
Fund Balance - End Of Year				\$27,310,070		

Amounts Expressed in Whole Dollars		<u>Total Governmental</u> <u>Funds</u>
Special And Extraordinary Items		
9920	Special Items – Gains	
9930	Extraordinary Items – Gains	
5520	Special Items – Losses	
5530	Extraordinary Items – Losses	
Net Change In Fund Balances		(\$16,400,498)
Fund Balance		
0001	Fund Balance - Beginning of Fiscal Year	52,174,344
Fund Balance - End Of Year		\$35,773,846

LEA : 123467103 Souderton Area SD

Printed 11/30/2023 3:32:03 PM

Amounts Expressed in Whole Dollars	<u>Food Service</u> <u>(51)</u>	<u>Child Care</u> <u>Operations</u> <u>(52)</u>	<u>Other Enterprise</u> <u>(58)</u>	<u>TOTAL</u>	<u>Internal Service</u> <u>(60)</u>
Assets And Deferred Outflows Of Resources					
Current Assets					
0100 Cash and Cash Equivalents	1,308,074			1,308,074	453,180
0110 Investments					
0130 Due From Other Funds	207,935			207,935	1,618,009
0141 Due From Other Governments	62,642			62,642	
0142 State Revenue Receivable					
0143 Federal Revenue Receivable					
0146 Due from Primary Government					
0147 Due from Component Unit					
0150 Other Receivables	12,998			12,998	236,768
0170 Inventories	88,924			88,924	
0180 Prepaid Expenses (Expenditures)					
0190 Other Current Assets					
Total Current Assets	\$1,680,573			\$1,680,573	\$2,307,957
Noncurrent Assets					
0211 Land					
0212 Site Improvements (Net)					
0220 Buildings and Building Improvements (Net)					
0230 Tangible Property and Intangible Right-To-Use Assets (Net)	443,790			443,790	
0250 Construction in Progress					
0260 Long Term Prepayments					
0290 Other Noncurrent Assets					
Total Noncurrent Assets	\$443,790			\$443,790	
0910 Deferred Outflows of Resources	317,615			317,615	
Total Assets And Deferred Outflows Of Resources	\$2,441,978			\$2,441,978	\$2,307,957

LEA : 123467103 Souderton Area SD

Printed 11/30/2023 3:32:03 PM

Amounts Expressed in Whole Dollars	<u>Food Service</u> <u>(51)</u>	<u>Child Care</u> <u>Operations</u> <u>(52)</u>	<u>Other Enterprise</u> <u>(58)</u>	<u>TOTAL</u>	<u>Internal Service</u> <u>(60)</u>
Liabilities And Deferred Inflows Of Resources And Net Position					
Current Liabilities					
0400 Due to Other Funds	94,306			94,306	
0411 Due to Other Governments					
0413 Due to Component Unit					
0420 Accounts Payable	84,515			84,515	1,003,962
0430 Contracts Payable					
0440 Current Portion of Long-Term Debt					
0450 Short-Term Payables					
0461 Accrued Salaries and Benefits	1,841			1,841	
0462 Payroll Deductions and Withholding					
0480 Unearned Revenues	101,204			101,204	
0490 Other Current Liabilities					92,660
Total Current Liabilities	\$281,866			\$281,866	\$1,096,622
Noncurrent Liabilities					
0510 Bonds Payable					
0520 Extended-Term Financing Agreements Payable					
0530 Lease and Other Right-To-Use Obligations					
0540 Accumulated Compensated Absences					
0550 Authority Lease Obligations					
0560 Other Post-Employment Benefits (OPEB)	137,053			137,053	
0570 Net Pension Liability	2,825,260			2,825,260	
0599 Other Noncurrent Liabilities					
Total Noncurrent Liabilities	\$2,962,313			\$2,962,313	
Total Liabilities	\$3,244,179			\$3,244,179	\$1,096,622
0950 Deferred Inflows of Resources	123,156			123,156	
Net Position					
0791 Net Investment in Capital Assets	443,790			443,790	
0008 Restricted Net Position (0792 – 0798)					
0799 Unrestricted Net Position	(1,369,147)			(1,369,147)	1,211,335
Total Net Position	(\$925,357)			(\$925,357)	\$1,211,335
Total Liabilities And Deferred Inflows Of Resources And Net Position	\$2,441,978			\$2,441,978	\$2,307,957

Amounts Expressed in Whole Dollars		<u>Food Service</u> <u>(51)</u>	<u>Child Care Operations</u> <u>(52)</u>	<u>Other Enterprise</u> <u>(58)</u>	<u>TOTAL</u>	<u>Internal Service</u> <u>(60)</u>
Operating Revenues						
6600	Food Service Revenue	1,279,003			1,279,003	
0071	Charges for Services					15,102,030
0072	Other Operating Revenue	68,161			68,161	29,050
Total Operating Revenues		\$1,347,164			\$1,347,164	\$15,131,080
Operating Expenses						
100	Personnel Services – Salaries	537,365			537,365	
200	Personnel Services – Employee Benefits	323,415			323,415	13,490,596
300	Purchased Professional and Technical Services	8,749			8,749	
400	Purchased Property Services	98,668			98,668	
500	Other Purchased Services	1,428,348			1,428,348	1,104,727
600	Supplies	330,874			330,874	
740	Depreciation	60,364			60,364	
770	Amortization Expense					
810	Dues and Fees	1,817			1,817	465,981
880	Refunds of Prior Years' Receipts					
890	Miscellaneous Expenditures					
Total Operating Expenses		\$2,789,600			\$2,789,600	\$15,061,304
Operating Income (Loss)		(\$1,442,436)			(\$1,442,436)	\$69,776
Non Operating Revenues (Expenses)						
6500	Earnings on Investments	31,765			31,765	
6830	Federal Revenue from Intermediary Sources					
6920	Contributions and Donations from Private Sources	15,949			15,949	
6930	Gains or Losses on Sale of Fixed Assets	(3,520)			(3,520)	
6991	Refunds of a Prior Year Expenditure					
7000	Revenue from State Sources	305,338			305,338	
8000	Revenue from Federal Sources	1,614,349			1,614,349	
9990	Insurance Recoveries					
820	Claims and Judgments Against the LEA					
830	Interest					
TOTAL Non Operating Revenues (Expenses)		\$1,963,881			\$1,963,881	
Income (Loss) Before Contributions And Transfers		\$521,445			\$521,445	\$69,776

Amounts Expressed in Whole Dollars	<u>Food Service</u> <u>(51)</u>	<u>Child Care Operations</u> <u>(52)</u>	<u>Other Enterprise</u> <u>(58)</u>	<u>TOTAL</u>	<u>Internal Service</u> <u>(60)</u>
Contributions, Transfers, and Special and Extraordinary Items					
5200 Interfund Transfers – Out					
5300 Transfers Out to Component Units/Primary Governments					
5520 Special Items – Losses					
5530 Extraordinary Items – Losses					
9300 Interfund Transfers - IN					
9500 Capital Contributions					
9700 Transfers IN From Component Units/Primary Governments					
9920 Special Items – Gains					
9930 Extraordinary Items – Gains					
Change In Net Position	\$521,445			\$521,445	\$69,776
0002 Net Position - Beginning of Fiscal Year	(1,446,801)			(1,446,801)	1,141,559
0003 Accounting Changes / Residual Equity Transfers					
Net Position - End Of Year	(\$925,356)			(\$925,356)	\$1,211,335

LEA : 123467103 Souderton Area SD

Printed 11/30/2023 3:32:57 PM

Amounts Expressed in Whole Dollars		<u>Food Service</u> <u>(51)</u>	<u>Child Care Operations</u> <u>(52)</u>	<u>Other Enterprise</u> <u>(58)</u>	<u>TOTAL</u>	<u>Internal Service(60)</u>
Cash Flows From Operating Activities						
0011	Cash Receipts From Users	1,072,495			1,072,495	
0012	Cash Receipts From Assessments Made to Other Funds					13,932,614
0013	Cash Receipts From Earnings on Investments					29,050
0014	Cash Receipts From Other Operating Revenue	68,161			68,161	
0015	Cash Payments To Employees For Services	929,646			929,646	
0016	Cash Payments For Insurance Claims					14,756,167
0017	Cash Payments To Suppliers For Goods and Services	1,448,289			1,448,289	
0018	Cash Payments For Other Operating Expenses	1,817			1,817	465,981
Net Cash Provided By (Used For) Operating Activities		(\$1,239,096)			(\$1,239,096)	(\$1,260,484)
Cash Flows From Non-Capital Financing Activities						
0021	Receipts From Local Sources - 6000	15,949			15,949	
0022	Receipts From State Sources - 7000	299,152			299,152	
0023	Receipts From Federal Sources -8000	1,404,069			1,404,069	
0024	Notes and Loans Received (Repaid)					
0025	Interest Paid on Notes/Loans - 5100-830					
0026	Operating Transfers In (Out)/Residual Equity Trans					
0027	Operating Transfers In (Out) Primary Government / Comp Unit					
0028	Receipts From Refund of Prior Year Expenditures - 6991					
0029	Special and Extraordinary Gains (losses)					
0030	Receipts from Insurance Recoveries -9990					
Net Cash Prov By (Used for) Non-Capital Financing Activities		\$1,719,170			\$1,719,170	
Cash Flows From Capital and Related Financing Activities						
0031	Payments For Fac Acq, Const, and Imp - 4000	(135,576)			(135,576)	
0032	Gain / (Loss) on Sale of Fixed Assets - 6930					
0033	Proceeds From Extended Term Financing - 9200					
0034	Principal Paid on Financing Agreements					
0035	Interest Paid on Financing Agreements - 5100-830					
0036	(Inc) Dec in Contributed Capital					
Net Cash Prov By (Used for) Capital and Related Financing Activities		(\$135,576)			(\$135,576)	
Cash Flows From Investing Activities						
0041	Earnings on Investments - 6500	31,765			31,765	
0042	Purchase of Inv Securities / Deposits to Inv Pools					
0043	Receipts From Investment Pool Withdrawals					
0044	Proceeds from Sale and Maturity of Inv Securities					

LEA : 123467103 Souderton Area SD

Printed 11/30/2023 3:32:57 PM

0045 Loans Received (Paid)

Net Cash Prov By (Used for) Investing Activities	\$31,765	\$31,765
--	----------	----------

LEA : 123467103 Souderton Area SD

Printed 11/30/2023 3:32:57 PM

	Food Service (51)	Child Care Operations (52)	Other Enterprise (58)	TOTAL	Internal Service (60)
Net Increase (Decrease) in Cash Flows	376,263			376,263	(1,260,484)
0004 Cash and Cash Equivalents Beginning of Year	931,811			931,811	1,713,664
Cash and Cash Equivalents at Year End	\$1,308,074			\$1,308,074	\$453,180
Reconciliation of Operating Income (Loss) To Net Cash Provided by (Used For) Operating Activities					
0005 Operating Income (Loss) per REP	(1,442,436)			(1,442,436)	69,776
Adjustments					
0051 Depreciation and Net Amortization	60,364			60,364	
0052 Provision for Uncollectible Accounts					
0053 Other Adjustments	273,956			273,956	
Effect of Changes in Assets, Liabilities, Deferred Outflows and Deferred Inflows					
0054 (Inc) Dec In Accounts Receivable (0120-0150)	(2,858)			(2,858)	(154,550)
0055 Advances to Other Funds	(203,650)			(203,650)	(1,014,866)
0056 (Inc) Dec in Inventories (0170)	8,830			8,830	
0057 (Inc) Dec in Prepaid Expenses (0180)					
0058 (Inc) Dec in Other Current or Noncurrent Assets					
0064 Deferred Outflows (0910)	89,666			89,666	
0059 Inc (Dec) in Accounts Payable (0400-0450)	114,830			114,830	(148,111)
0060 Inc (Dec) in Accrued Salaries/Benefits (0461)	(252)			(252)	
0065 Inc (Dec) in Net Pension Liabilities (0570)	88,219			88,219	
0066 Inc (Dec) in Other Postemp Benefit Oblig (0560)	(27,683)			(27,683)	
0061 Inc (Dec) in Payroll Deductions/Withholding (0462)					
0062 Inc (Dec) in Unearned Revenue (0480)					
0063 Inc (Dec) in Other Current or Noncurrent Liabilities	20,734			20,734	(12,733)
0067 Deferred Inflows (0950)	(218,815)			(218,815)	
Total Adjustments	\$203,341			\$203,341	(\$1,330,260)
Cash Provided By (Used for) Total	(\$1,239,095)			(\$1,239,095)	(\$1,260,484)

COMBINED STATEMENT OF CASH FLOWS
SCHEDULE OF NONCASH INVESTING, CAPITAL, AND FINANCING ACTIVITIES

Explanation of Transaction and Balance Sheet Effect	Amount
Total	

LEA : 123467103 Souderton Area SD

Printed 11/30/2023 3:32:59 PM

Amounts Expressed in Whole Dollars		<u>Private Purpose Trust</u> <u>(71)</u>	<u>Investment Trust</u> <u>(72)</u>	<u>Pension Trust</u> <u>(73)</u>	<u>Student Activity Custodial</u> <u>(81)</u>
Assets And Deferred Outflows Of Resources					
Assets					
0100	Cash and Cash Equivalents				280,602
0110	Investments				
0130	Due From Other Funds				
0140	Due from Other Governments, Primary Government and Component Units				
0150	Other Receivables				2,225
0170	Inventories				
0180	Prepaid Expenses (Expenditures)				
0190	Other Current Assets				
0220	Buildings and Building Improvements (Net)				
0230	Tangible Property and Intangible Right-To-Use Assets (Net)				
Total Assets					\$282,827
0910	Deferred Outflows of Resources				
Total Assets And Deferred Outflows Of Resources					\$282,827

LEA : 123467103 Souderton Area SD

Printed 11/30/2023 3:32:59 PM

Amounts Expressed in Whole Dollars		<u>Other Custodial</u> <u>(89)</u>	<u>Fiduciary Component Units</u> <u>(98)</u>	<u>Total Fiduciary Funds</u>
Assets And Deferred Outflows Of Resources				
Assets				
0100	Cash and Cash Equivalents			280,602
0110	Investments			
0130	Due From Other Funds			
0140	Due from Other Governments, Primary Government and Component Units			
0150	Other Receivables			2,225
0170	Inventories			
0180	Prepaid Expenses (Expenditures)			
0190	Other Current Assets			
0220	Buildings and Building Improvements (Net)			
0230	Tangible Property and Intangible Right-To-Use Assets (Net)			
Total Assets				\$282,827
0910	Deferred Outflows of Resources			
Total Assets And Deferred Outflows Of Resources				\$282,827

LEA : 123467103 Souderton Area SD

Printed 11/30/2023 3:32:59 PM

Amounts Expressed in Whole Dollars		<u>Private Purpose Trust</u> <u>(71)</u>	<u>Investment Trust</u> <u>(72)</u>	<u>Pension Trust</u> <u>(73)</u>	<u>Student Activity Custodial</u> <u>(81)</u>
Liabilities, Deferred Inflows Of Resources And Net Position					
Liabilities					
0400	Due to Other Funds				
0410	Due to Other Governments, Primary Government and Component Units				
0420	Accounts Payable				850
0430	Contracts Payable				
0450	Short-Term Payables				
0460	Payroll Accruals and Withholdings				
0480	Unearned Revenues				744
0490	Other Current Liabilities				2,214
Total Liabilities					\$3,808
0950	Deferred Inflows of Resources				
Net Position					
0791	Net Investment in Capital Assets				
0009	Restricted Net Position (0792 – 0798)				279,019
0799	Unrestricted Net Position				
Total Net Position					\$279,019
Total Liabilities, Deferred Inflows Of Resources And Net Position					\$282,827

LEA : 123467103 Souderton Area SD

Printed 11/30/2023 3:32:59 PM

Amounts Expressed in Whole Dollars		<u>Other Custodial</u> <u>(89)</u>	<u>Fiduciary Component Units</u> <u>(98)</u>	<u>Total Fiduciary Funds</u>
Liabilities, Deferred Inflows Of Resources And Net Position				
Liabilities				
0400	Due to Other Funds			
0410	Due to Other Governments, Primary Government and Component Units			
0420	Accounts Payable			850
0430	Contracts Payable			
0450	Short-Term Payables			
0460	Payroll Accruals and Withholdings			
0480	Unearned Revenues			744
0490	Other Current Liabilities			2,214
Total Liabilities				\$3,808
0950	Deferred Inflows of Resources			
Net Position				
0791	Net Investment in Capital Assets			
0009	Restricted Net Position (0792 – 0798)			279,019
0799	Unrestricted Net Position			
Total Net Position				\$279,019
Total Liabilities, Deferred Inflows Of Resources And Net Position				\$282,827

LEA : 123467103 Souderton Area SD

Printed 11/30/2023 3:33:01 PM

Amounts Expressed in Whole Dollars	<u>Private Purpose Trust</u> <u>(71)</u>	<u>Investment Trust</u> <u>(72)</u>	<u>Pension Trust</u> <u>(73)</u>	<u>Student Activity</u> <u>Custodial</u> <u>(81)</u>	<u>Other Custodial</u> <u>(89)</u>	<u>Fiduciary Component</u> <u>Units</u> <u>(98)</u>
Additions						
0091 Gifts and Contributions				587,775		
0095 Net Investment Earnings				620		
0092 Other Additions						
Deductions						
0093 Scholarships Awarded						
0094 Other Deductions				543,397		
Change In Net Position				\$44,998		
0006 Net Position – Beginning of Fiscal Year				234,021		
0007 Net Position Held in Trust for Pension Benefits						
Net Position - End of Fiscal Year				\$279,019		

LEA : 123467103 Souderton Area SD

Printed 11/30/2023 3:33:01 PM

Amounts Expressed in Whole Dollars		<u>Total Fiduciary</u>
		<u>Funds</u>
Additions		
0091	Gifts and Contributions	587,775
0095	Net Investment Earnings	620
0092	Other Additions	
Deductions		
0093	Scholarships Awarded	
0094	Other Deductions	543,397
Change In Net Position		\$44,998
0006	Net Position – Beginning of Fiscal Year	234,021
0007	Net Position Held in Trust for Pension Benefits	
Net Position - End of Fiscal Year		\$279,019

	Revenue Reported In Current Year	Current Year Tax Accrual	Prior Year Tax Accrual	Taxes Collected In Current Year
Revenue from Local Sources				
6111 Current Real Estate Taxes	87,297,891.29			87,297,891.29
6112 Interim Real Estate Taxes	561,416.69			561,416.69
6113 Public Utility Realty Taxes	93,570.57			93,570.57
6114 Payments in Lieu of Current Taxes - State / Local	350,498.76			350,498.76
6120 Current Per Capita Taxes, Section 679	140,788.80			140,788.80
6141 Current Act 511 Per Capita Taxes	140,788.80			140,788.80
6151 Current Act 511 Earned Income Taxes	10,144,361.28			10,144,361.28
6153 Current Act 511 Real Estate Transfer Taxes	1,716,847.43			1,716,847.43
6411 Delinquent Real Estate Taxes	948,675.89			948,675.89
6420 Delinquent Per Capita Taxes, Section 679	13,356.32			13,356.32
6440 Delinquent Local Enabling Taxes - Flat Rate Assessments	13,356.32			13,356.32
6500 Earnings on Investments	1,614,080.75			
6700 Revenues from LEA Activities	592,655.19			
6832 Federal IDEA Revenue Received as Pass Through	1,237,713.19			
6838 Federal COVID Related Revenue Received as Pass Through from Other PA LEAs	200.09			
6910 Rentals	151,465.96			
6920 Contributions and Donations from Private Sources	39,284.37			
6942 Summer School Tuition	110.00			
6943 Adult Education Tuition	84,977.00			
6944 Receipts from Other LEAs in Pennsylvania - Education	19,899.60			
6961 Transportation Services Provided Other Pennsylvania LEAs	18,276.66			
6962 Other Services Provided Other Pennsylvania LEAs	42,476.28			
6980 Revenue from Community Services Activities	556,453.50			
6991 Refunds of a Prior Year Expenditure	7,548.62			
6992 Energy Efficiency Revenues and Incentives	41,643.62			
6999 Other Revenues Not Specified Above	323,168.11			
TOTAL Revenue from Local Sources	\$106,151,505.09			\$101,421,552.15

	Revenue Reported In Current Year			
<u>Revenue from State Sources</u>				
7111 Basic Education Funding-Formula	10,943,079.69			
7112 Basic Education Funding-Social Security	2,091,257.45			
7160 Tuition for Orphans Subsidy	158,223.67			
7250 Migratory Children	40.00			
7271 Special Education funds for School-Aged Pupils	3,682,431.87			
7311 Pupil Transportation Subsidy	1,998,962.96			
7312 Nonpublic and Charter School Pupil Transportation Subsidy	289,135.00			
7320 Rental and Sinking Fund Payments / Building Reimbursement Subsidy	777,949.67			
7330 Health Services (Medical, Dental, Nurse, Act 25)	120,304.01			
7340 State Property Tax Reduction Allocation	2,818,508.18			
7505 Ready to Learn Block Grant	524,477.00			
7599 Other State Revenue Not Listed Elsewhere in the 7000 Series	624.60			
7820 State Share of Retirement Contributions	10,270,813.94			
TOTAL Revenue from State Sources	\$33,675,808.04			

	Revenue Reported In Current Year			
<u>Revenue from Federal Sources</u>				
8514 Title I - Improving the Academic Achievement of the Disadvantaged	370,992.00			
8515 Title II - Preparing, Training, and Recruiting High Quality Teachers and Principals	116,309.00			
8516 Title III - Language Instruction for English Learners and Immigrant Students	102,757.11			
8517 Title IV - 21st Century Schools	34,247.00			
8744 ARP ESSER - Elementary and Secondary School Emergency Relief Fund	1,064,589.79			
8751 ARP ESSER Learning Loss	145,472.97			
8752 ARP ESSER Summer Programs	12,748.20			
8753 ARP ESSER Afterschool Programs	18,183.21			
8810 School-Based Access Medicaid Reimbursement Program (SBAP) Reimbursements (Access)	249,000.00			
8820 Medical Assistance Reimbursement for Administrative Claiming (Quarterly) Program	4,784.19			
TOTAL Revenue from Federal Sources	\$2,119,083.47			

		Revenue Reported <u>In Current Year</u>			
<u>Other Financing Sources</u>					
9220	Leases and Other Right-to-Use Arrangements	167,263.59			
9990	Insurance Recoveries	2,575.48			
TOTAL Other Financing Sources		\$169,839.07			
TOTAL FROM ALL SOURCES		\$142,116,235.67	\$101,421,552.15		

LEA : 123467103 Souderton Area SD

Printed 11/30/2023 3:33:06 PM

	<u>General Fund (10)</u>	<u>Student Sponsored Activity Fund (21)</u>	<u>Public Purpose Trust (27)</u>	<u>Other Compt Approved (28)</u>	<u>Athletic / Activity (29)</u>	<u>Capital Reserve (690, 1850) (31)</u>
6000 Revenue from Local Sources						
6111 Current Real Estate Taxes	87,297,891.29					
6112 Interim Real Estate Taxes	561,416.69					
6113 Public Utility Realty Taxes	93,570.57					
6114 Payments in Lieu of Current Taxes - State / Local	350,498.76					
6120 Current Per Capita Taxes, Section 679	140,788.80					
6141 Current Act 511 Per Capita Taxes	140,788.80					
6151 Current Act 511 Earned Income Taxes	10,144,361.28					
6153 Current Act 511 Real Estate Transfer Taxes	1,716,847.43					
6411 Delinquent Real Estate Taxes	948,675.89					
6420 Delinquent Per Capita Taxes, Section 679	13,356.32					
6440 Delinquent Local Enabling Taxes - Flat Rate Assessments	13,356.32					
6500 Earnings on Investments	1,614,080.75					
6700 Revenues from LEA Activities	592,655.19					
6832 Federal IDEA Revenue Received as Pass Through	1,237,713.19					
6838 Federal COVID Related Revenue Received as Pass Through from Other PA LEAs	200.09					
6910 Rentals	151,465.96					
6920 Contributions and Donations from Private Sources	39,284.37					
6942 Summer School Tuition	110.00					
6943 Adult Education Tuition	84,977.00					
6944 Receipts from Other LEAs in Pennsylvania - Education	19,899.60					
6961 Transportation Services Provided Other Pennsylvania LEAs	18,276.66					
6962 Other Services Provided Other Pennsylvania LEAs	42,476.28					
6980 Revenue from Community Services Activities	556,453.50					
6991 Refunds of a Prior Year Expenditure	7,548.62					
6992 Energy Efficiency Revenues and Incentives	41,643.62					
6999 Other Revenues Not Specified Above	323,168.11					
6000 Total Revenue from Local Sources	\$106,151,505.09					
7000 Revenue from State Sources						
7111 Basic Education Funding-Formula	10,943,079.69					
7112 Basic Education Funding-Social Security	2,091,257.45					
7160 Tuition for Orphans Subsidy	158,223.67					
7250 Migratory Children	40.00					
7271 Special Education funds for School-Aged Pupils	3,682,431.87					
7311 Pupil Transportation Subsidy	1,998,962.96					
7312 Nonpublic and Charter School Pupil Transportation Subsidy	289,135.00					

LEA : 123467103 Souderton Area SD

Printed 11/30/2023 3:33:06 PM

	Capital Reserve (1431) (32)	Other Capital Projects Fund (39)	Debt Service (40)	Permanent (90)	Total
6000 Revenue from Local Sources					
6111 Current Real Estate Taxes					87,297,891.29
6112 Interim Real Estate Taxes					561,416.69
6113 Public Utility Realty Taxes					93,570.57
6114 Payments in Lieu of Current Taxes - State / Local					350,498.76
6120 Current Per Capita Taxes, Section 679					140,788.80
6141 Current Act 511 Per Capita Taxes					140,788.80
6151 Current Act 511 Earned Income Taxes					10,144,361.28
6153 Current Act 511 Real Estate Transfer Taxes					1,716,847.43
6411 Delinquent Real Estate Taxes					948,675.89
6420 Delinquent Per Capita Taxes, Section 679					13,356.32
6440 Delinquent Local Enabling Taxes - Flat Rate Assessments					13,356.32
6500 Earnings on Investments		1,397,099.50			3,011,180.25
6700 Revenues from LEA Activities					592,655.19
6832 Federal IDEA Revenue Received as Pass Through					1,237,713.19
6838 Federal COVID Related Revenue Received as Pass Through from Other PA LEAs					200.09
6910 Rentals					151,465.96
6920 Contributions and Donations from Private Sources					39,284.37
6942 Summer School Tuition					110.00
6943 Adult Education Tuition					84,977.00
6944 Receipts from Other LEAs in Pennsylvania - Education					19,899.60
6961 Transportation Services Provided Other Pennsylvania LEAs					18,276.66
6962 Other Services Provided Other Pennsylvania LEAs					42,476.28
6980 Revenue from Community Services Activities					556,453.50
6991 Refunds of a Prior Year Expenditure					7,548.62
6992 Energy Efficiency Revenues and Incentives					41,643.62
6999 Other Revenues Not Specified Above					323,168.11
6000 Total Revenue from Local Sources		\$1,397,099.50			\$107,548,604.59
7000 Revenue from State Sources					
7111 Basic Education Funding-Formula					10,943,079.69
7112 Basic Education Funding-Social Security					2,091,257.45
7160 Tuition for Orphans Subsidy					158,223.67
7250 Migratory Children					40.00
7271 Special Education funds for School-Aged Pupils					3,682,431.87
7311 Pupil Transportation Subsidy					1,998,962.96
7312 Nonpublic and Charter School Pupil Transportation Subsidy					289,135.00

LEA : 123467103 Souderton Area SD

Printed 11/30/2023 3:33:06 PM

	<u>General Fund (10)</u>	<u>Student Sponsored Activity Fund (21)</u>	<u>Public Purpose Trust (27)</u>	<u>Other Compt Approved (28)</u>	<u>Athletic / Activity (29)</u>	<u>Capital Reserve (690, 1850) (31)</u>
7000 Revenue from State Sources						
7320 Rental and Sinking Fund Payments / Building Reimbursement Subsidy	777,949.67					
7330 Health Services (Medical, Dental, Nurse, Act 25)	120,304.01					
7340 State Property Tax Reduction Allocation	2,818,508.18					
7505 Ready to Learn Block Grant	524,477.00					
7599 Other State Revenue Not Listed Elsewhere in the 7000 Series	624.60					
7820 State Share of Retirement Contributions	10,270,813.94					
7000 Total Revenue from State Sources	\$33,675,808.04					
8000 Revenue from Federal Sources						
8514 Title I - Improving the Academic Achievement of the Disadvantaged	370,992.00					
8515 Title II - Preparing, Training, and Recruiting High Quality Teachers and Principals	116,309.00					
8516 Title III - Language Instruction for English Learners and Immigrant Students	102,757.11					
8517 Title IV - 21st Century Schools	34,247.00					
8744 ARP ESSER - Elementary and Secondary School Emergency Relief Fund	1,064,589.79					
8751 ARP ESSER Learning Loss	145,472.97					
8752 ARP ESSER Summer Programs	12,748.20					
8753 ARP ESSER Afterschool Programs	18,183.21					
8810 School-Based Access Medicaid Reimbursement Program (SBAP) Reimbursements (Access)	249,000.00					
8820 Medical Assistance Reimbursement for Administrative Claiming (Quarterly) Program	4,784.19					
8000 Total Revenue from Federal Sources	\$2,119,083.47					
9000 Other Financing Sources						
9110 Face Value of Bonds Issued						
9220 Leases and Other Right-to-Use Arrangements	167,263.59					
9990 Insurance Recoveries	2,575.48					
9000 Total Other Financing Sources	\$169,839.07					
Total From All Sources	\$142,116,235.67					

LEA : 123467103 Souderton Area SD

Printed 11/30/2023 3:33:06 PM

	<u>Capital Reserve</u> <u>(1431) (32)</u>	<u>Other Capital</u> <u>Projects Fund (39)</u>	<u>Debt Service (40)</u>	<u>Permanent (90)</u>	<u>Total</u>
7000 Revenue from State Sources					
7320 Rental and Sinking Fund Payments / Building Reimbursement Subsidy					777,949.67
7330 Health Services (Medical, Dental, Nurse, Act 25)					120,304.01
7340 State Property Tax Reduction Allocation					2,818,508.18
7505 Ready to Learn Block Grant					524,477.00
7599 Other State Revenue Not Listed Elsewhere in the 7000 Series					624.60
7820 State Share of Retirement Contributions					10,270,813.94
7000 Total Revenue from State Sources					\$33,675,808.04
8000 Revenue from Federal Sources					
8514 Title I - Improving the Academic Achievement of the Disadvantaged					370,992.00
8515 Title II - Preparing, Training, and Recruiting High Quality Teachers and Principals					116,309.00
8516 Title III - Language Instruction for English Learners and Immigrant Students					102,757.11
8517 Title IV - 21st Century Schools					34,247.00
8744 ARP ESSER - Elementary and Secondary School Emergency Relief Fund					1,064,589.79
8751 ARP ESSER Learning Loss					145,472.97
8752 ARP ESSER Summer Programs					12,748.20
8753 ARP ESSER Afterschool Programs					18,183.21
8810 School-Based Access Medicaid Reimbursement Program (SBAP) Reimbursements (Access)					249,000.00
8820 Medical Assistance Reimbursement for Administrative Claiming (Quarterly) Program					4,784.19
8000 Total Revenue from Federal Sources					\$2,119,083.47
9000 Other Financing Sources					
9110 Face Value of Bonds Issued		9,999,459.00			9,999,459.00
9220 Leases and Other Right-to-Use Arrangements					167,263.59
9990 Insurance Recoveries					2,575.48
9000 Total Other Financing Sources		\$9,999,459.00			\$10,169,298.07
Total From All Sources		\$11,396,558.50			\$153,512,794.17

LEA : 123467103 Souderton Area SD

Printed 11/30/2023 3:33:09 PM

	<u>General Fund (10)</u>	<u>Student Sponsored Activity Fund (21)</u>	<u>Public Purpose Trust (27)</u>	<u>Other Compt Approved (28)</u>	<u>Athletic / Activity (29)</u>	<u>Capital Reserve (690. 1850) (31)</u>
Revenue from Local Sources	106,151,505.09					
Revenue from State Sources	33,675,808.04					
Revenue from Federal Sources	2,119,083.47					
Other Financing Sources	169,839.07					
Total From All Sources	\$142,116,235.67					

LEA : 123467103 Souderton Area SD

Printed 11/30/2023 3:33:09 PM

	<u>Capital Reserve (1431)</u> <u>(32)</u>	<u>Other Capital Projects</u> <u>Fund (39)</u>	<u>Debt Service (40)</u>	<u>Permanent (90)</u>	<u>Total</u>
Revenue from Local Sources		1,397,099.50			107,548,604.59
Revenue from State Sources					33,675,808.04
Revenue from Federal Sources					2,119,083.47
Other Financing Sources		9,999,459.00			10,169,298.07
Total From All Sources		\$11,396,558.50			\$153,512,794.17

LEA : 123467103 Souderton Area SD

Printed 11/30/2023 3:33:13 PM

General Fund (10)

1000 Instruction		Total
100 <u>Personnel Services – Salaries</u>		
100 Personnel Services – Salaries		43,296,492.44
Total Personnel Services – Salaries		\$43,296,492.44
200 <u>Personnel Services – Employee Benefits</u>		
210 Group Insurance – Contracted Provider		78,472.00
220 Social Security Contributions		3,171,267.65
230 PSERS Retirement Contributions		15,157,461.10
250 Unemployment Compensation		2,000.66
260 Workers' Compensation		202,857.02
270 Group Insurance – Self-Insurance		7,737,710.46
291 Other Retirement Plans		15,150.00
Total Personnel Services – Employee Benefits		\$26,364,918.89
300 <u>Purchased Professional and Technical Services</u>		
322 Professional Educational Services – Ius		3,206,419.96
323 Professional Educational Services – Other Educational Agencies		559,252.47
329 Professional Educational Services – Other		8,080.00
330 Other Professional Services		4,502,631.20
390 Other Purchased Professional and Technical Services		12,911.71
Total Purchased Professional and Technical Services		\$8,289,295.34
400 <u>Purchased Property Services</u>		
430 Repairs and Maintenance Services		6,127.36
440 Rentals		1,250.00
Total Purchased Property Services		\$7,377.36
500 <u>Other Purchased Services</u>		
510 Student Transportation Services		34,750.54
530 Communications		2,812.28
549 Other Advertising/Public Relations		535.00
550 Printing and Binding		14,781.41
561 Tuition To Other School Districts Within the State		184,020.99
562 Tuition To Pennsylvania Charter Schools		4,566,129.31
563 Tuition To Nonpublic Schools		2,468,328.31
564 Tuition To Career and Technology Centers		1,735,101.09
566 Tuition To Institutions of Higher Education and Technical Institutes		13,400.00
567 Tuition To Approved Private Schools (APS) and PA Chartered Schools for the Deaf and Blind		351,282.57
568 Tuition To Private Residential Rehabilitative Institutions (PRRI) [In-State] and Detention Centers		1,772,991.21
569 Tuition – Other		2,054.00
580 Travel		4,407.41
594 IU Payment By Withholding for Institutionalized Children's Programs – Special Classes		1,162.78
599 Other Miscellaneous Purchased Services		9,544.52
Total Other Purchased Services		\$11,161,301.42
600 <u>Supplies</u>		
610 General Supplies		1,147,430.45
630 Food		32,890.94
640 Books and Periodicals		232,945.23

LEA : 123467103 Souderton Area SD

Printed 11/30/2023 3:33:13 PM

General Fund (10)	
1000 Instruction	<u>Total</u>
600 <u>Supplies</u>	
650 Supplies & Fees – Technology Related	212,297.97
Total Supplies	\$1,625,564.59
700 <u>Property</u>	
766 Capitalized Technology Equipment – Replacement	101,181.80
Total Property	\$101,181.80
800 <u>Other Objects</u>	
810 Dues and Fees	16,537.72
820 Claims and Judgments Against the LEA	17,000.00
890 Miscellaneous Expenditures	900.00
Total Other Objects	\$34,437.72
Total 1000 Instruction	\$90,880,569.56

LEA : 123467103 Souderton Area SD

Printed 11/30/2023 3:33:13 PM

General Fund (10)

1100 Regular Programs – Elementary / Secondary	Elementary	Secondary	Federal	Total
100 <u>Personnel Services – Salaries</u>				
100 Personnel Services – Salaries	14,762,304.46	17,206,348.17	924,721.62	32,893,374.25
Total Personnel Services – Salaries	\$14,762,304.46	\$17,206,348.17	\$924,721.62	\$32,893,374.25
200 <u>Personnel Services – Employee Benefits</u>				
210 Group Insurance – Contracted Provider	28,006.04	33,019.66	4.25	61,029.95
220 Social Security Contributions	1,094,298.77	1,265,036.99	57,315.18	2,416,650.94
230 PSERS Retirement Contributions	5,243,613.27	6,104,303.15	213,021.04	11,560,937.46
250 Unemployment Compensation	158.25	794.63	27.98	980.86
260 Workers' Compensation	69,563.18	81,163.04	1,226.39	151,952.61
270 Group Insurance – Self-Insurance	2,752,123.95	3,175,687.43		5,927,811.38
Total Personnel Services – Employee Benefits	\$9,187,763.46	\$10,660,004.90	\$271,594.84	\$20,119,363.20
300 <u>Purchased Professional and Technical Services</u>				
330 Other Professional Services	6,310.52	14,262.78	85,922.50	106,495.80
Total Purchased Professional and Technical Services	\$6,310.52	\$14,262.78	\$85,922.50	\$106,495.80
400 <u>Purchased Property Services</u>				
430 Repairs and Maintenance Services		6,127.36		6,127.36
440 Rentals		1,250.00		1,250.00
Total Purchased Property Services		\$7,377.36		\$7,377.36
500 <u>Other Purchased Services</u>				
510 Student Transportation Services		25,129.68	165.00	25,294.68
561 Tuition To Other School Districts Within the State		13,390.50	167,503.00	180,893.50
562 Tuition To Pennsylvania Charter Schools	1,891,432.97	706,870.18		2,598,303.15
568 Tuition To Private Residential Rehabilitative Institutions (PRRI) [In-State] and Detention Centers		243,061.56		243,061.56
569 Tuition – Other		1,474.00		1,474.00
580 Travel	56.75	100.56		157.31
599 Other Miscellaneous Purchased Services		338.36		338.36
Total Other Purchased Services	\$1,891,489.72	\$990,364.84	\$167,668.00	\$3,049,522.56
600 <u>Supplies</u>				
610 General Supplies	645,909.45	271,762.03	156,162.52	1,073,834.00
630 Food	800.30	1,684.15		2,484.45
640 Books and Periodicals	135,686.99	53,486.92	19,843.99	209,017.90
650 Supplies & Fees – Technology Related	77,496.62	69,788.08	10,699.50	157,984.20
Total Supplies	\$859,893.36	\$396,721.18	\$186,706.01	\$1,443,320.55
700 <u>Property</u>				
766 Capitalized Technology Equipment – Replacement			101,181.80	101,181.80
Total Property			\$101,181.80	\$101,181.80
800 <u>Other Objects</u>				
810 Dues and Fees		6,877.00		6,877.00
890 Miscellaneous Expenditures	60.00	150.00		210.00
Total Other Objects	\$60.00	\$7,027.00		\$7,087.00
Total 1100 Regular Programs – Elementary / Secondary	\$26,707,821.52	\$29,282,106.23	\$1,737,794.77	\$57,727,722.52

LEA : 123467103 Souderton Area SD

Printed 11/30/2023 3:33:13 PM

General Fund (10)

1110 Regular Programs

	Elementary	Secondary	Federal	Total
100 <u>Personnel Services – Salaries</u>				
100 Personnel Services – Salaries	14,762,304.46	17,206,348.17	509,280.79	32,477,933.42
Total Personnel Services – Salaries	\$14,762,304.46	\$17,206,348.17	\$509,280.79	\$32,477,933.42
200 <u>Personnel Services – Employee Benefits</u>				
210 Group Insurance – Contracted Provider	28,006.04	33,019.66	4.25	61,029.95
220 Social Security Contributions	1,094,298.77	1,265,036.99	27,019.10	2,386,354.86
230 PSERS Retirement Contributions	5,243,613.27	6,104,303.15	89,786.20	11,437,702.62
250 Unemployment Compensation	158.25	794.63	27.90	980.78
260 Workers' Compensation	69,563.18	81,163.04	1,146.57	151,872.79
270 Group Insurance – Self-Insurance	2,752,123.95	3,175,687.43		5,927,811.38
Total Personnel Services – Employee Benefits	\$9,187,763.46	\$10,660,004.90	\$117,984.02	\$19,965,752.38
300 <u>Purchased Professional and Technical Services</u>				
330 Other Professional Services	6,310.52	14,262.78	85,922.50	106,495.80
Total Purchased Professional and Technical Services	\$6,310.52	\$14,262.78	\$85,922.50	\$106,495.80
400 <u>Purchased Property Services</u>				
430 Repairs and Maintenance Services		6,127.36		6,127.36
440 Rentals		1,250.00		1,250.00
Total Purchased Property Services		\$7,377.36		\$7,377.36
500 <u>Other Purchased Services</u>				
510 Student Transportation Services		25,129.68		25,129.68
561 Tuition To Other School Districts Within the State		13,390.50	167,503.00	180,893.50
562 Tuition To Pennsylvania Charter Schools	1,891,432.97	706,870.18		2,598,303.15
568 Tuition To Private Residential Rehabilitative Institutions (PRRI) [In-State] and Detention Centers		243,061.56		243,061.56
569 Tuition – Other		1,474.00		1,474.00
580 Travel	56.75	100.56		157.31
599 Other Miscellaneous Purchased Services		338.36		338.36
Total Other Purchased Services	\$1,891,489.72	\$990,364.84	\$167,503.00	\$3,049,357.56
600 <u>Supplies</u>				
610 General Supplies	645,909.45	271,762.03	151,930.57	1,069,602.05
630 Food	800.30	1,684.15		2,484.45
640 Books and Periodicals	135,686.99	53,486.92	3,135.78	192,309.69
650 Supplies & Fees – Technology Related	77,496.62	69,788.08	3,979.50	151,264.20
Total Supplies	\$859,893.36	\$396,721.18	\$159,045.85	\$1,415,660.39
700 <u>Property</u>				
766 Capitalized Technology Equipment – Replacement			101,181.80	101,181.80
Total Property			\$101,181.80	\$101,181.80
800 <u>Other Objects</u>				
810 Dues and Fees		6,877.00		6,877.00
890 Miscellaneous Expenditures	60.00	150.00		210.00
Total Other Objects	\$60.00	\$7,027.00		\$7,087.00
Total 1110 Regular Programs	\$26,707,821.52	\$29,282,106.23	\$1,140,917.96	\$57,130,845.71

LEA : 123467103 Souderton Area SD

Printed 11/30/2023 3:33:13 PM

General Fund (10)

1190 Federally-Funded Regular Programs	<u>Elementary</u>	<u>Secondary</u>	<u>Federal</u>	<u>Total</u>
100 <u>Personnel Services – Salaries</u>				
100 Personnel Services – Salaries			415,440.83	415,440.83
Total Personnel Services – Salaries			\$415,440.83	\$415,440.83
200 <u>Personnel Services – Employee Benefits</u>				
220 Social Security Contributions			30,296.08	30,296.08
230 PSERS Retirement Contributions			123,234.84	123,234.84
250 Unemployment Compensation			0.08	0.08
260 Workers' Compensation			79.82	79.82
Total Personnel Services – Employee Benefits			\$153,610.82	\$153,610.82
500 <u>Other Purchased Services</u>				
510 Student Transportation Services			165.00	165.00
Total Other Purchased Services			\$165.00	\$165.00
600 <u>Supplies</u>				
610 General Supplies			4,231.95	4,231.95
640 Books and Periodicals			16,708.21	16,708.21
650 Supplies & Fees – Technology Related			6,720.00	6,720.00
Total Supplies			\$27,660.16	\$27,660.16
Total 1190 Federally-Funded Regular Programs			\$596,876.81	\$596,876.81

LEA : 123467103 Souderton Area SD

Printed 11/30/2023 3:33:13 PM

General Fund (10)

1200 Special Programs – Elementary / Secondary

	Elementary	Secondary	Federal	Total
100 Personnel Services – Salaries				
100 Personnel Services – Salaries	4,373,770.20	4,890,573.51	805,774.39	10,070,118.10
Total Personnel Services – Salaries	\$4,373,770.20	\$4,890,573.51	\$805,774.39	\$10,070,118.10
200 Personnel Services – Employee Benefits				
210 Group Insurance – Contracted Provider	8,756.18	8,283.57		17,039.75
220 Social Security Contributions	330,959.25	370,028.68	29,048.65	730,036.58
230 PSERS Retirement Contributions	1,598,441.92	1,786,177.84	141,686.87	3,526,306.63
250 Unemployment Compensation	475.68	323.93		799.61
260 Workers' Compensation	23,108.37	26,039.79		49,148.16
270 Group Insurance – Self-Insurance	782,200.59	1,027,698.49		1,809,899.08
291 Other Retirement Plans	3,850.00	7,700.00		11,550.00
Total Personnel Services – Employee Benefits	\$2,747,791.99	\$3,226,252.30	\$170,735.52	\$6,144,779.81
300 Purchased Professional and Technical Services				
322 Professional Educational Services – Ius	1,475,806.12	1,514,798.84	201,585.00	3,192,189.96
323 Professional Educational Services – Other Educational Agencies	89,500.00	114,341.85		203,841.85
329 Professional Educational Services – Other		8,080.00		8,080.00
330 Other Professional Services	2,141,421.22	2,187,364.18	47,093.00	4,375,878.40
Total Purchased Professional and Technical Services	\$3,706,727.34	\$3,824,584.87	\$248,678.00	\$7,779,990.21
500 Other Purchased Services				
510 Student Transportation Services	2,082.19	2,428.67		4,510.86
530 Communications		2,812.28		2,812.28
550 Printing and Binding		23.00		23.00
561 Tuition To Other School Districts Within the State	528.00	2,599.49		3,127.49
562 Tuition To Pennsylvania Charter Schools	1,216,702.46	751,123.70		1,967,826.16
563 Tuition To Nonpublic Schools	515,005.75	1,953,322.56		2,468,328.31
566 Tuition To Institutions of Higher Education and Technical Institutes		13,400.00		13,400.00
567 Tuition To Approved Private Schools (APS) and PA Chartered Schools for the Deaf and Blind	99,419.31	251,863.26		351,282.57
568 Tuition To Private Residential Rehabilitative Institutions (PRRI) [In-State] and Detention Centers	227,315.04	1,302,614.61		1,529,929.65
569 Tuition – Other		580.00		580.00
580 Travel	1,375.42	2,543.18		3,918.60
594 IU Payment By Withholding for Institutionalized Children's Programs – Special Classes		1,162.78		1,162.78
599 Other Miscellaneous Purchased Services	149.00	765.64		914.64
Total Other Purchased Services	\$2,062,577.17	\$4,285,239.17		\$6,347,816.34
600 Supplies				
610 General Supplies	28,242.52	25,754.51	3,200.09	57,197.12
630 Food	250.49	1,714.00		1,964.49
640 Books and Periodicals	18,727.76	4,779.57		23,507.33
650 Supplies & Fees – Technology Related	25,521.80	28,791.97		54,313.77
Total Supplies	\$72,742.57	\$61,040.05	\$3,200.09	\$136,982.71
800 Other Objects				
810 Dues and Fees	1,750.00			1,750.00
820 Claims and Judgments Against the LEA		17,000.00		17,000.00

LEA : 123467103 Souderton Area SD

Printed 11/30/2023 3:33:13 PM

General Fund (10)

1200 Special Programs – Elementary / Secondary	<u>Elementary</u>	<u>Secondary</u>	<u>Federal</u>	<u>Total</u>
800 <u>Other Objects</u>				
890 Miscellaneous Expenditures		690.00		690.00
Total Other Objects	\$1,750.00	\$17,690.00		\$19,440.00
Total 1200 Special Programs – Elementary / Secondary	\$12,965,359.27	\$16,305,379.90	\$1,228,388.00	\$30,499,127.17

LEA : 123467103 Souderton Area SD

Printed 11/30/2023 3:33:13 PM

General Fund (10)

1210 Life Skills Support

	Elementary	Secondary	Federal	Total
100 <u>Personnel Services – Salaries</u>				
100 Personnel Services – Salaries	205,571.94	742,394.02		947,965.96
Total Personnel Services – Salaries	\$205,571.94	\$742,394.02		\$947,965.96
200 <u>Personnel Services – Employee Benefits</u>				
210 Group Insurance – Contracted Provider	228.85	868.69		1,097.54
220 Social Security Contributions	15,243.55	54,912.81		70,156.36
230 PSERS Retirement Contributions	72,423.69	260,868.87		333,292.56
250 Unemployment Compensation	50.13	106.29		156.42
260 Workers' Compensation	1,027.43	3,688.41		4,715.84
270 Group Insurance – Self-Insurance	33,771.14	85,901.75		119,672.89
Total Personnel Services – Employee Benefits	\$122,744.79	\$406,346.82		\$529,091.61
300 <u>Purchased Professional and Technical Services</u>				
322 Professional Educational Services – Ius	296,842.87	245,415.10		542,257.97
330 Other Professional Services	162,821.18	426,708.08	40,830.00	630,359.26
Total Purchased Professional and Technical Services	\$459,664.05	\$672,123.18	\$40,830.00	\$1,172,617.23
500 <u>Other Purchased Services</u>				
580 Travel		13.44		13.44
Total Other Purchased Services		\$13.44		\$13.44
600 <u>Supplies</u>				
610 General Supplies	321.18	11,028.27		11,349.45
650 Supplies & Fees – Technology Related	10,061.05	15,193.57		25,254.62
Total Supplies	\$10,382.23	\$26,221.84		\$36,604.07
Total 1210 Life Skills Support	\$798,363.01	\$1,847,099.30	\$40,830.00	\$2,686,292.31

LEA : 123467103 Souderton Area SD

Printed 11/30/2023 3:33:13 PM

General Fund (10)

1220 Sensory Support	Elementary	Secondary	Federal	Total
100 <u>Personnel Services – Salaries</u>				
100 Personnel Services – Salaries	674,361.84	151,621.00		825,982.84
Total Personnel Services – Salaries	\$674,361.84	\$151,621.00		\$825,982.84
200 <u>Personnel Services – Employee Benefits</u>				
210 Group Insurance – Contracted Provider	1,341.23	300.24		1,641.47
220 Social Security Contributions	49,943.68	11,215.05		61,158.73
230 PSERS Retirement Contributions	237,780.05	53,461.59		291,241.64
260 Workers' Compensation	3,156.33	710.88		3,867.21
270 Group Insurance – Self-Insurance	101,179.09	13,992.40		115,171.49
Total Personnel Services – Employee Benefits	\$393,400.38	\$79,680.16		\$473,080.54
300 <u>Purchased Professional and Technical Services</u>				
330 Other Professional Services	164,440.53	47,074.70		211,515.23
Total Purchased Professional and Technical Services	\$164,440.53	\$47,074.70		\$211,515.23
600 <u>Supplies</u>				
610 General Supplies	1,325.21	2,884.91		4,210.12
640 Books and Periodicals	355.18			355.18
650 Supplies & Fees – Technology Related	5,160.48			5,160.48
Total Supplies	\$6,840.87	\$2,884.91		\$9,725.78
Total 1220 Sensory Support	\$1,239,043.62	\$281,260.77		\$1,520,304.39

LEA : 123467103 Souderton Area SD

Printed 11/30/2023 3:33:13 PM

General Fund (10)

1230 Emotional Support

	Elementary	Secondary	Federal	Total
100 <u>Personnel Services – Salaries</u>				
100 Personnel Services – Salaries	500,601.16	387,754.30	805,774.39	1,694,129.85
Total Personnel Services – Salaries	\$500,601.16	\$387,754.30	\$805,774.39	\$1,694,129.85
200 <u>Personnel Services – Employee Benefits</u>				
210 Group Insurance – Contracted Provider	2,353.64	319.52		2,673.16
220 Social Security Contributions	47,690.11	44,775.91	29,048.65	121,514.67
230 PSERS Retirement Contributions	235,030.05	220,132.61	141,686.87	596,849.53
250 Unemployment Compensation	200.79	145.88		346.67
260 Workers' Compensation	4,333.70	4,519.63		8,853.33
270 Group Insurance – Self-Insurance	152,518.93	105,594.39		258,113.32
Total Personnel Services – Employee Benefits	\$442,127.22	\$375,487.94	\$170,735.52	\$988,350.68
300 <u>Purchased Professional and Technical Services</u>				
322 Professional Educational Services – Ius	446,869.82	412,493.01	58,432.97	917,795.80
330 Other Professional Services	1,063,712.43	772,062.59	3,090.00	1,838,865.02
Total Purchased Professional and Technical Services	\$1,510,582.25	\$1,184,555.60	\$61,522.97	\$2,756,660.82
500 <u>Other Purchased Services</u>				
580 Travel	119.71	30.38		150.09
Total Other Purchased Services	\$119.71	\$30.38		\$150.09
600 <u>Supplies</u>				
610 General Supplies	10,320.37	6,569.71		16,890.08
640 Books and Periodicals	974.89			974.89
650 Supplies & Fees – Technology Related	4,640.40	4,989.46		9,629.86
Total Supplies	\$15,935.66	\$11,559.17		\$27,494.83
Total 1230 Emotional Support	\$2,469,366.00	\$1,959,387.39	\$1,038,032.88	\$5,466,786.27

LEA : 123467103 Souderton Area SD

Printed 11/30/2023 3:33:13 PM

General Fund (10)

1240 Academic Support

	Elementary	Secondary	Federal	Total
100 <u>Personnel Services – Salaries</u>				
100 Personnel Services – Salaries	2,247,424.79	3,026,766.03		5,274,190.82
Total Personnel Services – Salaries	\$2,247,424.79	\$3,026,766.03		\$5,274,190.82
200 <u>Personnel Services – Employee Benefits</u>				
210 Group Insurance – Contracted Provider	3,491.74	5,461.36		8,953.10
220 Social Security Contributions	162,639.77	221,301.81		383,941.58
230 PSERS Retirement Contributions	792,306.26	1,066,979.49		1,859,285.75
250 Unemployment Compensation	161.00			161.00
260 Workers' Compensation	10,876.37	14,387.33		25,263.70
270 Group Insurance – Self-Insurance	364,531.06	770,372.26		1,134,903.32
Total Personnel Services – Employee Benefits	\$1,334,006.20	\$2,078,502.25		\$3,412,508.45
300 <u>Purchased Professional and Technical Services</u>				
322 Professional Educational Services – Ius	637,135.41	260,167.96	94,112.25	991,415.62
330 Other Professional Services	666,153.11	488,366.44		1,154,519.55
Total Purchased Professional and Technical Services	\$1,303,288.52	\$748,534.40	\$94,112.25	\$2,145,935.17
500 <u>Other Purchased Services</u>				
510 Student Transportation Services		161.00		161.00
Total Other Purchased Services		\$161.00		\$161.00
600 <u>Supplies</u>				
610 General Supplies	1,361.73	1,027.78		2,389.51
640 Books and Periodicals	17,275.56	4,767.38		22,042.94
650 Supplies & Fees – Technology Related	277.00	5,194.99		5,471.99
Total Supplies	\$18,914.29	\$10,990.15		\$29,904.44
Total 1240 Academic Support	\$4,903,633.80	\$5,864,953.83	\$94,112.25	\$10,862,699.88

LEA : 123467103 Souderton Area SD

Printed 11/30/2023 3:33:13 PM

General Fund (10)

1241 Learning Support – Public	Elementary	Secondary	Federal	Total
100 Personnel Services – Salaries				
100 Personnel Services – Salaries	2,001,655.79	2,716,779.03		4,718,434.82
Total Personnel Services – Salaries	\$2,001,655.79	\$2,716,779.03		\$4,718,434.82
200 Personnel Services – Employee Benefits				
210 Group Insurance – Contracted Provider	2,999.03	4,836.16		7,835.19
220 Social Security Contributions	145,823.34	198,176.09		343,999.43
230 PSERS Retirement Contributions	705,648.08	957,678.03		1,663,326.11
250 Unemployment Compensation	161.00			161.00
260 Workers' Compensation	9,725.30	12,936.25		22,661.55
270 Group Insurance – Self-Insurance	317,434.12	717,819.14		1,035,253.26
Total Personnel Services – Employee Benefits	\$1,181,790.87	\$1,891,445.67		\$3,073,236.54
300 Purchased Professional and Technical Services				
322 Professional Educational Services – Ius	637,135.41	260,167.96	94,112.25	991,415.62
330 Other Professional Services	666,153.11	488,366.44		1,154,519.55
Total Purchased Professional and Technical Services	\$1,303,288.52	\$748,534.40	\$94,112.25	\$2,145,935.17
600 Supplies				
610 General Supplies	1,361.73	1,027.78		2,389.51
640 Books and Periodicals	17,240.61	4,767.38		22,007.99
650 Supplies & Fees – Technology Related	97.00	5,194.99		5,291.99
Total Supplies	\$18,699.34	\$10,990.15		\$29,689.49
Total 1241 Learning Support – Public	\$4,505,434.52	\$5,367,749.25	\$94,112.25	\$9,967,296.02

LEA : 123467103 Souderton Area SD

Printed 11/30/2023 3:33:13 PM

General Fund (10)				
1243 Gifted Support	<u>Elementary</u>	<u>Secondary</u>	<u>Federal</u>	<u>Total</u>
100 <u>Personnel Services – Salaries</u>				
100 Personnel Services – Salaries	245,769.00	309,987.00		555,756.00
Total Personnel Services – Salaries	\$245,769.00	\$309,987.00		\$555,756.00
200 <u>Personnel Services – Employee Benefits</u>				
210 Group Insurance – Contracted Provider	492.71	625.20		1,117.91
220 Social Security Contributions	16,816.43	23,125.72		39,942.15
230 PSERS Retirement Contributions	86,658.18	109,301.46		195,959.64
260 Workers' Compensation	1,151.07	1,451.08		2,602.15
270 Group Insurance – Self-Insurance	47,096.94	52,553.12		99,650.06
Total Personnel Services – Employee Benefits	\$152,215.33	\$187,056.58		\$339,271.91
500 <u>Other Purchased Services</u>				
510 Student Transportation Services		161.00		161.00
Total Other Purchased Services		\$161.00		\$161.00
600 <u>Supplies</u>				
640 Books and Periodicals	34.95			34.95
650 Supplies & Fees – Technology Related	180.00			180.00
Total Supplies	\$214.95			\$214.95
Total 1243 Gifted Support	\$398,199.28	\$497,204.58		\$895,403.86

LEA : 123467103 Souderton Area SD

Printed 11/30/2023 3:33:13 PM

General Fund (10)

1260 Physical Support	<u>Elementary</u>	<u>Secondary</u>	<u>Federal</u>	<u>Total</u>
100 <u>Personnel Services – Salaries</u>				
100 Personnel Services – Salaries	354,494.00	60,605.00		415,099.00
Total Personnel Services – Salaries	\$354,494.00	\$60,605.00		\$415,099.00
200 <u>Personnel Services – Employee Benefits</u>				
210 Group Insurance – Contracted Provider	623.63	101.73		725.36
220 Social Security Contributions	26,297.11	4,309.40		30,606.51
230 PSERS Retirement Contributions	124,994.45	21,369.28		146,363.73
260 Workers' Compensation	1,658.97	284.14		1,943.11
Total Personnel Services – Employee Benefits	\$153,574.16	\$26,064.55		\$179,638.71
Total 1260 Physical Support	\$508,068.16	\$86,669.55		\$594,737.71

LEA : 123467103 Souderton Area SD

Printed 11/30/2023 3:33:13 PM

General Fund (10)

1270 Multi-Handicapped Support	Elementary	Secondary	Federal	Total
100 <u>Personnel Services – Salaries</u>				
100 Personnel Services – Salaries	177,893.49	95,286.20		273,179.69
Total Personnel Services – Salaries	\$177,893.49	\$95,286.20		\$273,179.69
200 <u>Personnel Services – Employee Benefits</u>				
210 Group Insurance – Contracted Provider	210.84	150.36		361.20
220 Social Security Contributions	13,189.75	6,890.97		20,080.72
230 PSERS Retirement Contributions	62,816.98	33,597.84		96,414.82
250 Unemployment Compensation	32.52	6.11		38.63
260 Workers' Compensation	885.14	460.56		1,345.70
270 Group Insurance – Self-Insurance	29,933.95	1,998.38		31,932.33
Total Personnel Services – Employee Benefits	\$107,069.18	\$43,104.22		\$150,173.40
300 <u>Purchased Professional and Technical Services</u>				
330 Other Professional Services		121,221.83		121,221.83
Total Purchased Professional and Technical Services		\$121,221.83		\$121,221.83
500 <u>Other Purchased Services</u>				
510 Student Transportation Services	608.23			608.23
599 Other Miscellaneous Purchased Services	64.00			64.00
Total Other Purchased Services	\$672.23			\$672.23
600 <u>Supplies</u>				
610 General Supplies	3,351.79	1,127.22		4,479.01
640 Books and Periodicals	122.13			122.13
650 Supplies & Fees – Technology Related	2,439.87	2,904.00		5,343.87
Total Supplies	\$5,913.79	\$4,031.22		\$9,945.01
Total 1270 Multi-Handicapped Support	\$291,548.69	\$263,643.47		\$555,192.16

LEA : 123467103 Souderton Area SD

Printed 11/30/2023 3:33:13 PM

General Fund (10)

1280 Early Intervention Support	<u>Elementary</u>	<u>Secondary</u>	<u>Federal</u>	<u>Total</u>
300 <u>Purchased Professional and Technical Services</u>				
322 Professional Educational Services – lus	94,828.25			94,828.25
Total Purchased Professional and Technical Services	\$94,828.25			\$94,828.25
Total 1280 Early Intervention Support	\$94,828.25			\$94,828.25

LEA : 123467103 Souderton Area SD

Printed 11/30/2023 3:33:13 PM

General Fund (10)

1290 Special Programs - Other Support	Elementary	Secondary	Federal	Total
100 <u>Personnel Services – Salaries</u>				
100 Personnel Services – Salaries	213,422.98	426,146.96		639,569.94
Total Personnel Services – Salaries	\$213,422.98	\$426,146.96		\$639,569.94
200 <u>Personnel Services – Employee Benefits</u>				
210 Group Insurance – Contracted Provider	506.25	1,081.67		1,587.92
220 Social Security Contributions	15,955.28	26,622.73		42,578.01
230 PSERS Retirement Contributions	73,090.44	129,768.16		202,858.60
250 Unemployment Compensation	31.24	65.65		96.89
260 Workers' Compensation	1,170.43	1,988.84		3,159.27
270 Group Insurance – Self-Insurance	100,266.42	49,839.31		150,105.73
291 Other Retirement Plans	3,850.00	7,700.00		11,550.00
Total Personnel Services – Employee Benefits	\$194,870.06	\$217,066.36		\$411,936.42
300 <u>Purchased Professional and Technical Services</u>				
322 Professional Educational Services – Ius	129.77	596,722.77	49,039.78	645,892.32
323 Professional Educational Services – Other Educational Agencies	89,500.00	114,341.85		203,841.85
329 Professional Educational Services – Other		8,080.00		8,080.00
330 Other Professional Services	84,293.97	331,930.54	3,173.00	419,397.51
Total Purchased Professional and Technical Services	\$173,923.74	\$1,051,075.16	\$52,212.78	\$1,277,211.68
500 <u>Other Purchased Services</u>				
510 Student Transportation Services	1,473.96	2,267.67		3,741.63
530 Communications		2,812.28		2,812.28
550 Printing and Binding		23.00		23.00
561 Tuition To Other School Districts Within the State	528.00	2,599.49		3,127.49
562 Tuition To Pennsylvania Charter Schools	1,216,702.46	751,123.70		1,967,826.16
563 Tuition To Nonpublic Schools	515,005.75	1,953,322.56		2,468,328.31
566 Tuition To Institutions of Higher Education and Technical Institutes		13,400.00		13,400.00
567 Tuition To Approved Private Schools (APS) and PA Chartered Schools for the Deaf and Blind	99,419.31	251,863.26		351,282.57
568 Tuition To Private Residential Rehabilitative Institutions (PRRI) [In-State] and Detention Centers	227,315.04	1,302,614.61		1,529,929.65
569 Tuition – Other		580.00		580.00
580 Travel	1,255.71	2,499.36		3,755.07
594 IU Payment By Withholding for Institutionalized Children's Programs – Special Classes		1,162.78		1,162.78
599 Other Miscellaneous Purchased Services	85.00	765.64		850.64
Total Other Purchased Services	\$2,061,785.23	\$4,285,034.35		\$6,346,819.58
600 <u>Supplies</u>				
610 General Supplies	11,562.24	3,116.62	3,200.09	17,878.95
630 Food	250.49	1,714.00		1,964.49
640 Books and Periodicals		12.19		12.19
650 Supplies & Fees – Technology Related	2,943.00	509.95		3,452.95
Total Supplies	\$14,755.73	\$5,352.76	\$3,200.09	\$23,308.58
800 <u>Other Objects</u>				
810 Dues and Fees	1,750.00			1,750.00
820 Claims and Judgments Against the LEA		17,000.00		17,000.00

LEA : 123467103 Souderton Area SD

Printed 11/30/2023 3:33:13 PM

General Fund (10)

1290 Special Programs - Other Support	<u>Elementary</u>	<u>Secondary</u>	<u>Federal</u>	<u>Total</u>
800 <u>Other Objects</u>				
890 Miscellaneous Expenditures		690.00		690.00
Total Other Objects	\$1,750.00	\$17,690.00		\$19,440.00
Total 1290 Special Programs - Other Support	\$2,660,507.74	\$6,002,365.59	\$55,412.87	\$8,718,286.20

LEA : 123467103 Souderton Area SD

Printed 11/30/2023 3:33:13 PM

General Fund (10)

1300 Vocational Education

<u>Elementary</u>	<u>Secondary</u>	<u>Federal</u>	<u>Total</u>
-------------------	------------------	----------------	--------------

500 Other Purchased Services

564 Tuition To Career and Technology Centers	1,735,101.09		1,735,101.09
--	--------------	--	--------------

Total Other Purchased Services	\$1,735,101.09		\$1,735,101.09
---------------------------------------	-----------------------	--	-----------------------

Total 1300 Vocational Education	\$1,735,101.09		\$1,735,101.09
--	-----------------------	--	-----------------------

LEA : 123467103 Souderton Area SD

Printed 11/30/2023 3:33:13 PM

General Fund (10)

1400 Other Instructional Programs – Elementary / Secondary	Elementary	Secondary	Federal	Total
100 <u>Personnel Services – Salaries</u>				
100 Personnel Services – Salaries	216,173.20	43,955.65		260,128.85
Total Personnel Services – Salaries	\$216,173.20	\$43,955.65		\$260,128.85
200 <u>Personnel Services – Employee Benefits</u>				
210 Group Insurance – Contracted Provider	176.78			176.78
220 Social Security Contributions	16,092.52	3,042.54		19,135.06
230 PSERS Retirement Contributions	40,099.68	9,275.29		49,374.97
250 Unemployment Compensation	159.14	32.12		191.26
260 Workers' Compensation	1,140.55	240.43		1,380.98
291 Other Retirement Plans	1,800.00			1,800.00
Total Personnel Services – Employee Benefits	\$59,468.67	\$12,590.38		\$72,059.05
300 <u>Purchased Professional and Technical Services</u>				
322 Professional Educational Services – Ius		8,542.00		8,542.00
323 Professional Educational Services – Other Educational Agencies	84,307.66	271,102.96		355,410.62
390 Other Purchased Professional and Technical Services	12,911.71			12,911.71
Total Purchased Professional and Technical Services	\$97,219.37	\$279,644.96		\$376,864.33
500 <u>Other Purchased Services</u>				
510 Student Transportation Services	4,945.00			4,945.00
550 Printing and Binding	400.00			400.00
580 Travel	331.50			331.50
599 Other Miscellaneous Purchased Services	8,291.52			8,291.52
Total Other Purchased Services	\$13,968.02			\$13,968.02
600 <u>Supplies</u>				
610 General Supplies	15,208.39	230.61		15,439.00
630 Food	28,442.00			28,442.00
Total Supplies	\$43,650.39	\$230.61		\$43,881.00
800 <u>Other Objects</u>				
810 Dues and Fees	3,648.22	1,577.08		5,225.30
Total Other Objects	\$3,648.22	\$1,577.08		\$5,225.30
Total 1400 Other Instructional Programs – Elementary / Secondary	\$434,127.87	\$337,998.68		\$772,126.55

LEA : 123467103 Souderton Area SD

Printed 11/30/2023 3:33:13 PM

General Fund (10)

1430 Homebound Instruction	<u>Elementary</u>	<u>Secondary</u>	<u>Federal</u>	<u>Total</u>
100 <u>Personnel Services – Salaries</u>				
100 Personnel Services – Salaries	417.00	11,044.00		11,461.00
Total Personnel Services – Salaries	\$417.00	\$11,044.00		\$11,461.00
200 <u>Personnel Services – Employee Benefits</u>				
220 Social Security Contributions	31.45	845.20		876.65
230 PSERS Retirement Contributions	147.03	3,894.08		4,041.11
250 Unemployment Compensation		7.24		7.24
260 Workers' Compensation	2.25	61.89		64.14
Total Personnel Services – Employee Benefits	\$180.73	\$4,808.41		\$4,989.14
300 <u>Purchased Professional and Technical Services</u>				
323 Professional Educational Services – Other Educational Agencies	84,307.66	271,102.96		355,410.62
Total Purchased Professional and Technical Services	\$84,307.66	\$271,102.96		\$355,410.62
Total 1430 Homebound Instruction	\$84,905.39	\$286,955.37		\$371,860.76

LEA : 123467103 Souderton Area SD

Printed 11/30/2023 3:33:13 PM

General Fund (10)

1440 Alternative Regular Education Programs	<u>Elementary</u>	<u>Secondary</u>	<u>Federal</u>	<u>Total</u>
300 <u>Purchased Professional and Technical Services</u>				
322 Professional Educational Services – lus		8,542.00		8,542.00
Total Purchased Professional and Technical Services		\$8,542.00		\$8,542.00
Total 1440 Alternative Regular Education Programs		\$8,542.00		\$8,542.00

LEA : 123467103 Souderton Area SD

Printed 11/30/2023 3:33:13 PM

General Fund (10)

1441 Adjudicated / Court-Placed Programs	<u>Elementary</u>	<u>Secondary</u>	<u>Federal</u>	<u>Total</u>
300 <u>Purchased Professional and Technical Services</u>				
322 Professional Educational Services – lus		8,542.00		8,542.00
Total Purchased Professional and Technical Services		\$8,542.00		\$8,542.00
Total 1441 Adjudicated / Court-Placed Programs		\$8,542.00		\$8,542.00

LEA : 123467103 Souderton Area SD

Printed 11/30/2023 3:33:13 PM

General Fund (10)				
1490 Additional Other Instructional Programs	<u>Elementary</u>	<u>Secondary</u>	<u>Federal</u>	<u>Total</u>
100 <u>Personnel Services – Salaries</u>				
100 Personnel Services – Salaries	215,756.20	32,911.65		248,667.85
Total Personnel Services – Salaries	\$215,756.20	\$32,911.65		\$248,667.85
200 <u>Personnel Services – Employee Benefits</u>				
210 Group Insurance – Contracted Provider	176.78			176.78
220 Social Security Contributions	16,061.07	2,197.34		18,258.41
230 PSERS Retirement Contributions	39,952.65	5,381.21		45,333.86
250 Unemployment Compensation	159.14	24.88		184.02
260 Workers' Compensation	1,138.30	178.54		1,316.84
291 Other Retirement Plans	1,800.00			1,800.00
Total Personnel Services – Employee Benefits	\$59,287.94	\$7,781.97		\$67,069.91
300 <u>Purchased Professional and Technical Services</u>				
390 Other Purchased Professional and Technical Services	12,911.71			12,911.71
Total Purchased Professional and Technical Services	\$12,911.71			\$12,911.71
500 <u>Other Purchased Services</u>				
510 Student Transportation Services	4,945.00			4,945.00
550 Printing and Binding	400.00			400.00
580 Travel	331.50			331.50
599 Other Miscellaneous Purchased Services	8,291.52			8,291.52
Total Other Purchased Services	\$13,968.02			\$13,968.02
600 <u>Supplies</u>				
610 General Supplies	15,208.39	230.61		15,439.00
630 Food	28,442.00			28,442.00
Total Supplies	\$43,650.39	\$230.61		\$43,881.00
800 <u>Other Objects</u>				
810 Dues and Fees	3,648.22	1,577.08		5,225.30
Total Other Objects	\$3,648.22	\$1,577.08		\$5,225.30
Total 1490 Additional Other Instructional Programs	\$349,222.48	\$42,501.31		\$391,723.79

LEA : 123467103 Souderton Area SD

Printed 11/30/2023 3:33:13 PM

General Fund (10)

1500 Nonpublic School Programs

	<u>Elementary</u>	<u>Secondary</u>	<u>Federal</u>	<u>Total</u>
300 <u>Purchased Professional and Technical Services</u>				
322 Professional Educational Services – lus			5,688.00	5,688.00
330 Other Professional Services			4,078.00	4,078.00
Total Purchased Professional and Technical Services			\$9,766.00	\$9,766.00
Total 1500 Nonpublic School Programs			\$9,766.00	\$9,766.00

LEA : 123467103 Souderton Area SD

Printed 11/30/2023 3:33:13 PM

General Fund (10)

1600 Adult Education Programs	Elementary	Secondary	Federal	Total
100 <u>Personnel Services – Salaries</u>				
100 Personnel Services – Salaries				72,871.24
Total Personnel Services – Salaries				\$72,871.24
200 <u>Personnel Services – Employee Benefits</u>				
210 Group Insurance – Contracted Provider				225.52
220 Social Security Contributions				5,445.07
230 PSERS Retirement Contributions				20,842.04
250 Unemployment Compensation				28.93
260 Workers' Compensation				375.27
291 Other Retirement Plans				1,800.00
Total Personnel Services – Employee Benefits				\$28,716.83
300 <u>Purchased Professional and Technical Services</u>				
330 Other Professional Services				16,179.00
Total Purchased Professional and Technical Services				\$16,179.00
500 <u>Other Purchased Services</u>				
549 Other Advertising/Public Relations				535.00
550 Printing and Binding				14,358.41
Total Other Purchased Services				\$14,893.41
600 <u>Supplies</u>				
610 General Supplies				960.33
640 Books and Periodicals				420.00
Total Supplies				\$1,380.33
800 <u>Other Objects</u>				
810 Dues and Fees				2,685.42
Total Other Objects				\$2,685.42
Total 1600 Adult Education Programs				\$136,726.23

LEA : 123467103 Souderton Area SD

Printed 11/30/2023 3:33:18 PM

General Fund (10)

2000 Support Services

Total

100	<u>Personnel Services – Salaries</u>	
100	Personnel Services – Salaries	14,900,958.86
Total Personnel Services – Salaries		\$14,900,958.86
200	<u>Personnel Services – Employee Benefits</u>	
210	Group Insurance – Contracted Provider	44,832.69
220	Social Security Contributions	1,074,650.70
230	PSERS Retirement Contributions	5,087,900.30
240	Tuition Reimbursement	233,692.80
250	Unemployment Compensation	588.49
260	Workers' Compensation	70,736.47
270	Group Insurance – Self-Insurance	3,148,939.72
291	Other Retirement Plans	96,270.83
Total Personnel Services – Employee Benefits		\$9,757,612.00
300	<u>Purchased Professional and Technical Services</u>	
322	Professional Educational Services – Ius	225,793.31
329	Professional Educational Services – Other	17,182.50
330	Other Professional Services	1,277,918.80
340	Technical Services	56,902.00
350	Security / Safety Services	37,173.37
360	Employee Training and Development Services	27,291.46
390	Other Purchased Professional and Technical Services	1,233.90
Total Purchased Professional and Technical Services		\$1,643,495.34
400	<u>Purchased Property Services</u>	
410	Cleaning Services	67,750.43
420	Utility Services	165,482.49
430	Repairs and Maintenance Services	897,097.46
440	Rentals	194,501.56
450	Construction Services	26,140.00
Total Purchased Property Services		\$1,350,971.94
500	<u>Other Purchased Services</u>	
510	Student Transportation Services	340.00
511	Student Transportation Services from Another LEA Within the State	16,987.32
513	Contracted Carriers	8,101,364.65
516	Student Transportation Services From the IU	185,132.50
519	Student Transportation Services From Other Sources	253,029.09
520	Insurance – General	97,272.00
522	Automotive Liability Insurance	23,918.00
523	General Property and Liability Insurance	336,604.00
530	Communications	531,684.07
549	Other Advertising/Public Relations	2,617.36
550	Printing and Binding	48,319.62
580	Travel	18,088.87
595	IU Payments By Withholding	80,676.75
Total Other Purchased Services		\$9,696,034.23

LEA : 123467103 Souderton Area SD

Printed 11/30/2023 3:33:18 PM

General Fund (10)

2000 Support Services

Total

600 <u>Supplies</u>	
610 General Supplies	847,892.88
620 Energy	1,439,326.26
630 Food	20,682.07
640 Books and Periodicals	50,335.62
650 Supplies & Fees – Technology Related	1,348,021.27
Total Supplies	\$3,706,258.10
700 <u>Property</u>	
738 Technology Software Lease and Other Right-to-Use Arrangements	214,014.59
752 Capital Equipment – Original and Additional	29,167.01
756 Capitalized Technology Equipment – Original	54,404.50
758 Capitalized Technology Software - Original	18,087.50
762 Capitalized Equipment - Replacement	105,408.60
766 Capitalized Technology Equipment – Replacement	315,435.98
Total Property	\$736,518.18
800 <u>Other Objects</u>	
810 Dues and Fees	81,528.17
820 Claims and Judgments Against the LEA	18,500.00
890 Miscellaneous Expenditures	47,752.00
Total Other Objects	\$147,780.17
Total 2000 Support Services	\$41,939,628.82

LEA : 123467103 Souderton Area SD

Printed 11/30/2023 3:33:18 PM

General Fund (10)

2100 Support Services – Students

	Elementary	Secondary	Federal	Total
100 Personnel Services – Salaries				
100 Personnel Services – Salaries	1,023,081.49	1,361,326.56	213,105.00	3,016,498.37
Total Personnel Services – Salaries	\$1,023,081.49	\$1,361,326.56	\$213,105.00	\$3,016,498.37
200 Personnel Services – Employee Benefits				
210 Group Insurance – Contracted Provider	2,458.34	2,819.90		5,480.08
220 Social Security Contributions	77,640.55	104,566.20	7,849.86	221,188.03
230 PSERS Retirement Contributions	378,826.46	498,673.86	37,570.42	1,058,898.42
250 Unemployment Compensation		14.06		174.02
260 Workers' Compensation	5,376.52	7,082.52		14,652.56
270 Group Insurance – Self-Insurance	176,560.53	236,079.83		531,068.02
291 Other Retirement Plans	3,450.00	3,450.00		6,900.00
Total Personnel Services – Employee Benefits	\$644,312.40	\$852,686.37	\$45,420.28	\$1,838,361.13
300 Purchased Professional and Technical Services				
322 Professional Educational Services – Ius	750.00	188,558.17		189,308.17
330 Other Professional Services	17,092.50	2,047.22		584,696.10
Total Purchased Professional and Technical Services	\$17,842.50	\$190,605.39		\$774,004.27
500 Other Purchased Services				
510 Student Transportation Services	340.00			340.00
530 Communications	220.50	31.50		252.00
549 Other Advertising/Public Relations				59.99
550 Printing and Binding	2,554.50	2,554.50		5,109.00
580 Travel	450.47	252.28		1,413.20
Total Other Purchased Services	\$3,565.47	\$2,838.28		\$7,174.19
600 Supplies				
610 General Supplies	9,570.35	4,581.61		14,166.90
630 Food	35.00	295.97		330.97
640 Books and Periodicals	777.71	382.98		1,160.69
650 Supplies & Fees – Technology Related		12,059.77		111,145.96
Total Supplies	\$10,383.06	\$17,320.33		\$126,804.52
800 Other Objects				
810 Dues and Fees	300.00	420.00		720.00
890 Miscellaneous Expenditures		47,752.00		47,752.00
Total Other Objects	\$300.00	\$48,172.00		\$48,472.00
Total 2100 Support Services – Students	\$1,699,484.92	\$2,472,948.93	\$258,525.28	\$5,811,314.48

LEA : 123467103 Souderton Area SD

Printed 11/30/2023 3:33:18 PM

General Fund (10)

2110 Supervision of Student Services	Elementary	Secondary	Federal	Total
100 <u>Personnel Services – Salaries</u>				
100 Personnel Services – Salaries	109,125.25	109,125.25		218,250.50
Total Personnel Services – Salaries	\$109,125.25	\$109,125.25		\$218,250.50
200 <u>Personnel Services – Employee Benefits</u>				
210 Group Insurance – Contracted Provider	619.84	619.84		1,239.68
220 Social Security Contributions	7,766.18	7,766.18		15,532.36
230 PSERS Retirement Contributions	38,112.78	38,112.78		76,225.56
260 Workers' Compensation	533.58	533.58		1,067.16
270 Group Insurance – Self-Insurance	24,364.96	24,364.96		48,729.92
291 Other Retirement Plans	3,450.00	3,450.00		6,900.00
Total Personnel Services – Employee Benefits	\$74,847.34	\$74,847.34		\$149,694.68
500 <u>Other Purchased Services</u>				
530 Communications	31.50	31.50		63.00
550 Printing and Binding	2,554.50	2,554.50		5,109.00
580 Travel	78.33	78.32		156.65
Total Other Purchased Services	\$2,664.33	\$2,664.32		\$5,328.65
600 <u>Supplies</u>				
610 General Supplies	43.24	43.24		86.48
630 Food	35.00	35.00		70.00
640 Books and Periodicals	337.00	337.00		674.00
Total Supplies	\$415.24	\$415.24		\$830.48
800 <u>Other Objects</u>				
810 Dues and Fees	200.00	200.00		400.00
Total Other Objects	\$200.00	\$200.00		\$400.00
Total 2110 Supervision of Student Services	\$187,252.16	\$187,252.15		\$374,504.31

LEA : 123467103 Souderton Area SD

Printed 11/30/2023 3:33:18 PM

General Fund (10)

2111 Supervision of Student Services – Head of Component	<u>Elementary</u>	<u>Secondary</u>	<u>Federal</u>	<u>Total</u>
100 <u>Personnel Services – Salaries</u>				
100 Personnel Services – Salaries	109,125.25	109,125.25		218,250.50
Total Personnel Services – Salaries	\$109,125.25	\$109,125.25		\$218,250.50
200 <u>Personnel Services – Employee Benefits</u>				
210 Group Insurance – Contracted Provider	619.84	619.84		1,239.68
220 Social Security Contributions	7,766.18	7,766.18		15,532.36
230 PSERS Retirement Contributions	38,112.78	38,112.78		76,225.56
260 Workers' Compensation	533.58	533.58		1,067.16
270 Group Insurance – Self-Insurance	24,364.96	24,364.96		48,729.92
291 Other Retirement Plans	3,450.00	3,450.00		6,900.00
Total Personnel Services – Employee Benefits	\$74,847.34	\$74,847.34		\$149,694.68
500 <u>Other Purchased Services</u>				
530 Communications	31.50	31.50		63.00
550 Printing and Binding	2,554.50	2,554.50		5,109.00
580 Travel	78.33	78.32		156.65
Total Other Purchased Services	\$2,664.33	\$2,664.32		\$5,328.65
600 <u>Supplies</u>				
610 General Supplies	43.24	43.24		86.48
630 Food	35.00	35.00		70.00
640 Books and Periodicals	337.00	337.00		674.00
Total Supplies	\$415.24	\$415.24		\$830.48
800 <u>Other Objects</u>				
810 Dues and Fees	200.00	200.00		400.00
Total Other Objects	\$200.00	\$200.00		\$400.00
Total 2111 Supervision of Student Services – Head of Component	\$187,252.16	\$187,252.15		\$374,504.31

LEA : 123467103 Souderton Area SD

Printed 11/30/2023 3:33:18 PM

General Fund (10)

2120 Guidance Services	Elementary	Secondary	Federal	Total
100 Personnel Services – Salaries				
100 Personnel Services – Salaries	529,264.45	1,081,224.99		1,610,489.44
Total Personnel Services – Salaries	\$529,264.45	\$1,081,224.99		\$1,610,489.44
200 Personnel Services – Employee Benefits				
210 Group Insurance – Contracted Provider	1,065.23	1,865.51		2,930.74
220 Social Security Contributions	37,711.82	80,128.36		117,840.18
230 PSERS Retirement Contributions	186,618.47	381,157.20		567,775.67
260 Workers' Compensation	2,476.80	5,162.22		7,639.02
270 Group Insurance – Self-Insurance	94,817.95	182,698.47		277,516.42
Total Personnel Services – Employee Benefits	\$322,690.27	\$651,011.76		\$973,702.03
500 Other Purchased Services				
510 Student Transportation Services	340.00			340.00
Total Other Purchased Services	\$340.00			\$340.00
600 Supplies				
610 General Supplies	526.11	344.32		870.43
630 Food		260.97		260.97
640 Books and Periodicals	440.71	45.98		486.69
650 Supplies & Fees – Technology Related		12,059.77		12,059.77
Total Supplies	\$966.82	\$12,711.04		\$13,677.86
800 Other Objects				
890 Miscellaneous Expenditures		47,752.00		47,752.00
Total Other Objects		\$47,752.00		\$47,752.00
Total 2120 Guidance Services	\$853,261.54	\$1,792,699.79		\$2,645,961.33

LEA : 123467103 Souderton Area SD

Printed 11/30/2023 3:33:18 PM

General Fund (10)

2130 Attendance Services

	<u>Elementary</u>	<u>Secondary</u>	<u>Federal</u>	<u>Total</u>
100 <u>Personnel Services – Salaries</u>				
100 Personnel Services – Salaries				418,985.32
Total Personnel Services – Salaries				\$418,985.32
200 <u>Personnel Services – Employee Benefits</u>				
210 Group Insurance – Contracted Provider				201.84
220 Social Security Contributions				31,131.42
230 PSERS Retirement Contributions				143,827.68
250 Unemployment Compensation				159.96
260 Workers' Compensation				2,193.52
270 Group Insurance – Self-Insurance				118,427.66
Total Personnel Services – Employee Benefits				\$295,942.08
500 <u>Other Purchased Services</u>				
549 Other Advertising/Public Relations				59.99
580 Travel				710.45
Total Other Purchased Services				\$770.44
600 <u>Supplies</u>				
610 General Supplies				14.94
Total Supplies				\$14.94
Total 2130 Attendance Services				\$715,712.78

LEA : 123467103 Souderton Area SD

Printed 11/30/2023 3:33:18 PM

General Fund (10)

2140 Psychological Services	Elementary	Secondary	Federal	Total
100 <u>Personnel Services – Salaries</u>				
100 Personnel Services – Salaries	384,691.79	170,976.32	213,105.00	768,773.11
Total Personnel Services – Salaries	\$384,691.79	\$170,976.32	\$213,105.00	\$768,773.11
200 <u>Personnel Services – Employee Benefits</u>				
210 Group Insurance – Contracted Provider	773.27	334.55		1,107.82
220 Social Security Contributions	32,162.55	16,671.66	7,849.86	56,684.07
230 PSERS Retirement Contributions	154,095.21	79,403.88	37,570.42	271,069.51
250 Unemployment Compensation		14.06		14.06
260 Workers' Compensation	2,366.14	1,386.72		3,752.86
270 Group Insurance – Self-Insurance	57,377.62	29,016.40		86,394.02
Total Personnel Services – Employee Benefits	\$246,774.79	\$126,827.27	\$45,420.28	\$419,022.34
300 <u>Purchased Professional and Technical Services</u>				
322 Professional Educational Services – Ius	750.00	188,558.17		189,308.17
330 Other Professional Services	17,092.50	2,047.22		19,139.72
Total Purchased Professional and Technical Services	\$17,842.50	\$190,605.39		\$208,447.89
500 <u>Other Purchased Services</u>				
530 Communications	189.00			189.00
580 Travel	372.14	173.96		546.10
Total Other Purchased Services	\$561.14	\$173.96		\$735.10
600 <u>Supplies</u>				
610 General Supplies	9,001.00	4,194.05		13,195.05
Total Supplies	\$9,001.00	\$4,194.05		\$13,195.05
800 <u>Other Objects</u>				
810 Dues and Fees	100.00	220.00		320.00
Total Other Objects	\$100.00	\$220.00		\$320.00
Total 2140 Psychological Services	\$658,971.22	\$492,996.99	\$258,525.28	\$1,410,493.49

LEA : 123467103 Souderton Area SD

Printed 11/30/2023 3:33:18 PM

General Fund (10)

2160 Social Work Services

<u>Elementary</u>	<u>Secondary</u>	<u>Federal</u>	<u>Total</u>
-------------------	------------------	----------------	--------------

300 Purchased Professional and Technical Services

330 Other Professional Services			565,556.38
---------------------------------	--	--	------------

Total Purchased Professional and Technical Services			\$565,556.38
--	--	--	---------------------

Total 2160 Social Work Services			\$565,556.38
--	--	--	---------------------

LEA : 123467103 Souderton Area SD

Printed 11/30/2023 3:33:18 PM

General Fund (10)

2170 Student Accounting Services

<u>Elementary</u>	<u>Secondary</u>	<u>Federal</u>	<u>Total</u>
-------------------	------------------	----------------	--------------

600 Supplies

650 Supplies & Fees – Technology Related				99,086.19
--	--	--	--	-----------

Total Supplies				\$99,086.19
-----------------------	--	--	--	--------------------

Total 2170 Student Accounting Services				\$99,086.19
---	--	--	--	--------------------

LEA : 123467103 Souderton Area SD

Printed 11/30/2023 3:33:18 PM

General Fund (10)

2200 Support Services – Instructional Staff

	Elementary	Secondary	Federal	Total
100 <u>Personnel Services – Salaries</u>				
100 Personnel Services – Salaries	1,307,649.68	1,114,299.06	672.00	2,422,620.74
Total Personnel Services – Salaries	\$1,307,649.68	\$1,114,299.06	\$672.00	\$2,422,620.74
200 <u>Personnel Services – Employee Benefits</u>				
210 Group Insurance – Contracted Provider	3,861.94	3,716.21		7,578.15
220 Social Security Contributions	95,783.59	81,410.37		177,193.96
230 PSERS Retirement Contributions	452,969.34	391,250.19		844,219.53
240 Tuition Reimbursement	101,766.00	118,633.80		220,399.80
250 Unemployment Compensation	16.53	1.41		17.94
260 Workers' Compensation	6,559.04	5,280.92		11,839.96
270 Group Insurance – Self-Insurance	222,566.79	218,020.38		440,587.17
291 Other Retirement Plans	9,288.20	5,675.00		14,963.20
Total Personnel Services – Employee Benefits	\$892,811.43	\$823,988.28		\$1,716,799.71
300 <u>Purchased Professional and Technical Services</u>				
329 Professional Educational Services – Other		195.00	13,600.00	13,795.00
330 Other Professional Services	9,550.00	11,638.50	15,300.00	36,488.50
360 Employee Training and Development Services	5,800.80	11,787.66	4,535.00	22,123.46
390 Other Purchased Professional and Technical Services	853.90	380.00		1,233.90
Total Purchased Professional and Technical Services	\$16,204.70	\$24,001.16	\$33,435.00	\$73,640.86
400 <u>Purchased Property Services</u>				
430 Repairs and Maintenance Services	15,371.68	26,356.22		41,727.90
440 Rentals	53,579.91	53,579.92		107,159.83
Total Purchased Property Services	\$68,951.59	\$79,936.14		\$148,887.73
500 <u>Other Purchased Services</u>				
530 Communications	500.00			500.00
550 Printing and Binding	883.94	352.39		1,236.33
580 Travel	4,870.08	3,539.97		8,410.05
Total Other Purchased Services	\$6,254.02	\$3,892.36		\$10,146.38
600 <u>Supplies</u>				
610 General Supplies	56,978.19	114,661.96		171,640.15
630 Food	1,107.82	758.97		1,866.79
640 Books and Periodicals	27,766.97	19,226.38	838.50	47,831.85
650 Supplies & Fees – Technology Related	220,460.48	137,714.53		358,175.01
Total Supplies	\$306,313.46	\$272,361.84	\$838.50	\$579,513.80
700 <u>Property</u>				
738 Technology Software Lease and Other Right-to-Use Arrangements	64,175.33	64,175.33		128,350.66
Total Property	\$64,175.33	\$64,175.33		\$128,350.66
800 <u>Other Objects</u>				
810 Dues and Fees	913.00	582.00		1,495.00
Total Other Objects	\$913.00	\$582.00		\$1,495.00
Total 2200 Support Services – Instructional Staff	\$2,663,273.21	\$2,383,236.17	\$34,945.50	\$5,081,454.88

LEA : 123467103 Souderton Area SD

Printed 11/30/2023 3:33:18 PM

General Fund (10)

2210 Supervision of Educational Media Services	<u>Elementary</u>	<u>Secondary</u>	<u>Federal</u>	<u>Total</u>
100 <u>Personnel Services – Salaries</u>				
100 Personnel Services – Salaries	43,762.05	43,762.05		87,524.10
Total Personnel Services – Salaries	\$43,762.05	\$43,762.05		\$87,524.10
200 <u>Personnel Services – Employee Benefits</u>				
210 Group Insurance – Contracted Provider	296.74	296.74		593.48
220 Social Security Contributions	3,196.82	3,196.83		6,393.65
230 PSERS Retirement Contributions	15,027.49	15,027.50		30,054.99
260 Workers' Compensation	205.72	205.72		411.44
270 Group Insurance – Self-Insurance	11,970.30	11,970.31		23,940.61
291 Other Retirement Plans	1,925.00	1,925.00		3,850.00
Total Personnel Services – Employee Benefits	\$32,622.07	\$32,622.10		\$65,244.17
300 <u>Purchased Professional and Technical Services</u>				
330 Other Professional Services		2,745.00		2,745.00
Total Purchased Professional and Technical Services		\$2,745.00		\$2,745.00
600 <u>Supplies</u>				
610 General Supplies		555.93		555.93
630 Food	53.35	53.35		106.70
Total Supplies	\$53.35	\$609.28		\$662.63
Total 2210 Supervision of Educational Media Services	\$76,437.47	\$79,738.43		\$156,175.90

LEA : 123467103 Souderton Area SD

Printed 11/30/2023 3:33:18 PM

General Fund (10)

2211 Supervision of Educational Media Services – Head of Component	<u>Elementary</u>	<u>Secondary</u>	<u>Federal</u>	<u>Total</u>
100 <u>Personnel Services – Salaries</u>				
100 Personnel Services – Salaries	43,762.05	43,762.05		87,524.10
Total Personnel Services – Salaries	\$43,762.05	\$43,762.05		\$87,524.10
200 <u>Personnel Services – Employee Benefits</u>				
210 Group Insurance – Contracted Provider	296.74	296.74		593.48
220 Social Security Contributions	3,196.82	3,196.83		6,393.65
230 PSERS Retirement Contributions	15,027.49	15,027.50		30,054.99
260 Workers' Compensation	205.72	205.72		411.44
270 Group Insurance – Self-Insurance	11,970.30	11,970.31		23,940.61
291 Other Retirement Plans	1,925.00	1,925.00		3,850.00
Total Personnel Services – Employee Benefits	\$32,622.07	\$32,622.10		\$65,244.17
300 <u>Purchased Professional and Technical Services</u>				
330 Other Professional Services		2,745.00		2,745.00
Total Purchased Professional and Technical Services		\$2,745.00		\$2,745.00
600 <u>Supplies</u>				
610 General Supplies		555.93		555.93
630 Food	53.35	53.35		106.70
Total Supplies	\$53.35	\$609.28		\$662.63
Total 2211 Supervision of Educational Media Services – Head of Component	\$76,437.47	\$79,738.43		\$156,175.90

LEA : 123467103 Souderton Area SD

Printed 11/30/2023 3:33:18 PM

General Fund (10)

2220 Technology Support Services	Elementary	Secondary	Federal	Total
100 <u>Personnel Services – Salaries</u>				
100 Personnel Services – Salaries	320,599.44	273,509.91		594,109.35
Total Personnel Services – Salaries	\$320,599.44	\$273,509.91		\$594,109.35
200 <u>Personnel Services – Employee Benefits</u>				
210 Group Insurance – Contracted Provider	629.76	963.12		1,592.88
220 Social Security Contributions	23,765.64	20,164.78		43,930.42
230 PSERS Retirement Contributions	112,409.19	95,281.91		207,691.10
250 Unemployment Compensation	16.53			16.53
260 Workers' Compensation	1,510.84	1,279.84		2,790.68
270 Group Insurance – Self-Insurance	17,075.10	72,054.24		89,129.34
291 Other Retirement Plans	3,913.20	300.00		4,213.20
Total Personnel Services – Employee Benefits	\$159,320.26	\$190,043.89		\$349,364.15
300 <u>Purchased Professional and Technical Services</u>				
390 Other Purchased Professional and Technical Services		155.00		155.00
Total Purchased Professional and Technical Services		\$155.00		\$155.00
400 <u>Purchased Property Services</u>				
430 Repairs and Maintenance Services	9,823.68	18,601.35		28,425.03
Total Purchased Property Services	\$9,823.68	\$18,601.35		\$28,425.03
500 <u>Other Purchased Services</u>				
580 Travel	1,562.32	864.00		2,426.32
Total Other Purchased Services	\$1,562.32	\$864.00		\$2,426.32
600 <u>Supplies</u>				
610 General Supplies	11,791.15	111,435.58		123,226.73
650 Supplies & Fees – Technology Related	5,038.80	5,038.80		10,077.60
Total Supplies	\$16,829.95	\$116,474.38		\$133,304.33
Total 2220 Technology Support Services	\$508,135.65	\$599,648.53		\$1,107,784.18

LEA : 123467103 Souderton Area SD

Printed 11/30/2023 3:33:18 PM

General Fund (10)

2240 Computer-Assisted Instruction Support Services	<u>Elementary</u>	<u>Secondary</u>	<u>Federal</u>	<u>Total</u>
400 <u>Purchased Property Services</u>				
440 Rentals	53,579.91	53,579.92		107,159.83
Total Purchased Property Services	\$53,579.91	\$53,579.92		\$107,159.83
500 <u>Other Purchased Services</u>				
580 Travel	330.78			330.78
Total Other Purchased Services	\$330.78			\$330.78
600 <u>Supplies</u>				
610 General Supplies	273.00			273.00
Total Supplies	\$273.00			\$273.00
Total 2240 Computer-Assisted Instruction Support Services	\$54,183.69	\$53,579.92		\$107,763.61

LEA : 123467103 Souderton Area SD

Printed 11/30/2023 3:33:18 PM

General Fund (10)

2250 School Library Services	Elementary	Secondary	Federal	Total
100 Personnel Services – Salaries				
100 Personnel Services – Salaries	497,987.00	247,103.00		745,090.00
Total Personnel Services – Salaries	\$497,987.00	\$247,103.00		\$745,090.00
200 Personnel Services – Employee Benefits				
210 Group Insurance – Contracted Provider	997.55	491.81		1,489.36
220 Social Security Contributions	36,691.71	17,953.62		54,645.33
230 PSERS Retirement Contributions	175,590.18	87,128.36		262,718.54
260 Workers' Compensation	2,333.15	1,158.25		3,491.40
270 Group Insurance – Self-Insurance	125,047.63	61,384.56		186,432.19
Total Personnel Services – Employee Benefits	\$340,660.22	\$168,116.60		\$508,776.82
600 Supplies				
610 General Supplies	897.24	1,246.58		2,143.82
640 Books and Periodicals	19,621.71	18,083.41		37,705.12
650 Supplies & Fees – Technology Related	27,786.54	49,394.73		77,181.27
Total Supplies	\$48,305.49	\$68,724.72		\$117,030.21
Total 2250 School Library Services	\$886,952.71	\$483,944.32		\$1,370,897.03

LEA : 123467103 Souderton Area SD

Printed 11/30/2023 3:33:18 PM

General Fund (10)

2260 Instruction and Curriculum Development Services	Elementary	Secondary	Federal	Total
100 Personnel Services – Salaries				
100 Personnel Services – Salaries	306,396.17	336,073.23		642,469.40
Total Personnel Services – Salaries	\$306,396.17	\$336,073.23		\$642,469.40
200 Personnel Services – Employee Benefits				
210 Group Insurance – Contracted Provider	1,655.03	1,694.43		3,349.46
220 Social Security Contributions	22,260.48	24,432.70		46,693.18
230 PSERS Retirement Contributions	102,157.66	118,499.57		220,657.23
250 Unemployment Compensation		1.41		1.41
260 Workers' Compensation	1,451.53	1,589.64		3,041.17
270 Group Insurance – Self-Insurance	42,503.17	42,896.78		85,399.95
291 Other Retirement Plans	3,450.00	3,450.00		6,900.00
Total Personnel Services – Employee Benefits	\$173,477.87	\$192,564.53		\$366,042.40
300 Purchased Professional and Technical Services				
330 Other Professional Services	300.00	4,291.50		4,591.50
390 Other Purchased Professional and Technical Services	853.90	225.00		1,078.90
Total Purchased Professional and Technical Services	\$1,153.90	\$4,516.50		\$5,670.40
400 Purchased Property Services				
430 Repairs and Maintenance Services	5,548.00	7,754.87		13,302.87
Total Purchased Property Services	\$5,548.00	\$7,754.87		\$13,302.87
500 Other Purchased Services				
530 Communications	500.00			500.00
550 Printing and Binding	883.94	352.39		1,236.33
580 Travel	2,859.87	2,450.38		5,310.25
Total Other Purchased Services	\$4,243.81	\$2,802.77		\$7,046.58
600 Supplies				
610 General Supplies	44,016.80	1,423.87		45,440.67
630 Food	1,054.47	705.62		1,760.09
640 Books and Periodicals	8,145.26	1,142.97		9,288.23
650 Supplies & Fees – Technology Related	180,671.14	83,281.00		263,952.14
Total Supplies	\$233,887.67	\$86,553.46		\$320,441.13
700 Property				
738 Technology Software Lease and Other Right-to-Use Arrangements	64,175.33	64,175.33		128,350.66
Total Property	\$64,175.33	\$64,175.33		\$128,350.66
800 Other Objects				
810 Dues and Fees	913.00	582.00		1,495.00
Total Other Objects	\$913.00	\$582.00		\$1,495.00
Total 2260 Instruction and Curriculum Development Services	\$789,795.75	\$695,022.69		\$1,484,818.44

LEA : 123467103 Souderton Area SD

Printed 11/30/2023 3:33:18 PM

General Fund (10)

2270 Instructional Staff Professional Development Services	Elementary	Secondary	Federal	Total
100 <u>Personnel Services – Salaries</u>				
100 Personnel Services – Salaries	138,905.02	213,850.87	672.00	353,427.89
Total Personnel Services – Salaries	\$138,905.02	\$213,850.87	\$672.00	\$353,427.89
200 <u>Personnel Services – Employee Benefits</u>				
210 Group Insurance – Contracted Provider	282.86	270.11		552.97
220 Social Security Contributions	9,868.94	15,662.44		25,531.38
230 PSERS Retirement Contributions	47,784.82	75,312.85		123,097.67
240 Tuition Reimbursement	101,766.00	118,633.80		220,399.80
260 Workers' Compensation	1,057.80	1,047.47		2,105.27
270 Group Insurance – Self-Insurance	25,970.59	29,714.49		55,685.08
Total Personnel Services – Employee Benefits	\$186,731.01	\$240,641.16		\$427,372.17
300 <u>Purchased Professional and Technical Services</u>				
329 Professional Educational Services – Other		195.00	13,600.00	13,795.00
330 Other Professional Services	9,250.00	4,602.00	15,300.00	29,152.00
360 Employee Training and Development Services	5,800.80	11,787.66	4,535.00	22,123.46
Total Purchased Professional and Technical Services	\$15,050.80	\$16,584.66	\$33,435.00	\$65,070.46
500 <u>Other Purchased Services</u>				
580 Travel	117.11	225.59		342.70
Total Other Purchased Services	\$117.11	\$225.59		\$342.70
600 <u>Supplies</u>				
650 Supplies & Fees – Technology Related	6,964.00			6,964.00
Total Supplies	\$6,964.00			\$6,964.00
Total 2270 Instructional Staff Professional Development Services	\$347,767.94	\$471,302.28	\$34,107.00	\$853,177.22

LEA : 123467103 Souderton Area SD

Printed 11/30/2023 3:33:18 PM

General Fund (10)

2280 Nonpublic Support Services

	<u>Elementary</u>	<u>Secondary</u>	<u>Federal</u>	<u>Total</u>
600 <u>Supplies</u>				
640 Books and Periodicals			838.50	838.50
Total Supplies			\$838.50	\$838.50
Total 2280 Nonpublic Support Services			\$838.50	\$838.50

LEA : 123467103 Souderton Area SD

Printed 11/30/2023 3:33:18 PM

General Fund (10)

2300 Support Services – Administration	Elementary	Secondary	Federal	Total
100 Personnel Services – Salaries				
100 Personnel Services – Salaries	1,172,831.25	1,717,178.64		3,266,250.67
Total Personnel Services – Salaries	\$1,172,831.25	\$1,717,178.64		\$3,266,250.67
200 Personnel Services – Employee Benefits				
210 Group Insurance – Contracted Provider	5,963.97	8,763.94		16,102.88
220 Social Security Contributions	84,754.89	116,650.61		225,583.22
230 PSERS Retirement Contributions	395,781.79	550,912.11		1,042,718.49
260 Workers' Compensation	5,389.72	7,478.12		14,250.98
270 Group Insurance – Self-Insurance	254,041.88	317,399.92		612,167.35
291 Other Retirement Plans	11,460.00	23,754.40		42,914.40
Total Personnel Services – Employee Benefits	\$757,392.25	\$1,024,959.10		\$1,953,737.32
300 Purchased Professional and Technical Services				
330 Other Professional Services	623.00	1,381.00		315,510.35
Total Purchased Professional and Technical Services	\$623.00	\$1,381.00		\$315,510.35
400 Purchased Property Services				
440 Rentals	23,242.23	16,167.92		40,753.65
Total Purchased Property Services	\$23,242.23	\$16,167.92		\$40,753.65
500 Other Purchased Services				
520 Insurance – General				97,272.00
530 Communications	7,672.56	13,765.14		53,308.82
549 Other Advertising/Public Relations				2,557.37
550 Printing and Binding	19,607.62	21,984.41		41,611.43
580 Travel	437.07	2,431.26		3,651.98
Total Other Purchased Services	\$27,717.25	\$38,180.81		\$198,401.60
600 Supplies				
610 General Supplies	5,815.39	24,932.74		58,226.69
630 Food	1,953.56	9,457.80		16,016.38
640 Books and Periodicals	1,041.15			1,146.08
650 Supplies & Fees – Technology Related				9,000.00
Total Supplies	\$8,810.10	\$34,390.54		\$84,389.15
800 Other Objects				
810 Dues and Fees	5,445.00	3,630.00		37,201.00
820 Claims and Judgments Against the LEA				18,500.00
Total Other Objects	\$5,445.00	\$3,630.00		\$55,701.00
Total 2300 Support Services – Administration	\$1,996,061.08	\$2,835,888.01		\$5,914,743.74

LEA : 123467103 Souderton Area SD

Printed 11/30/2023 3:33:18 PM

General Fund (10)

2310 Board Services

Elementary Secondary Federal Total

300 <u>Purchased Professional and Technical Services</u>				
330 Other Professional Services				30,433.92
Total Purchased Professional and Technical Services				\$30,433.92
500 <u>Other Purchased Services</u>				
520 Insurance – General				81,638.00
549 Other Advertising/Public Relations				2,447.37
Total Other Purchased Services				\$84,085.37
600 <u>Supplies</u>				
610 General Supplies				932.43
630 Food				84.00
650 Supplies & Fees – Technology Related				9,000.00
Total Supplies				\$10,016.43
800 <u>Other Objects</u>				
810 Dues and Fees				16,308.04
820 Claims and Judgments Against the LEA				18,500.00
Total Other Objects				\$34,808.04
Total 2310 Board Services				\$159,343.76

LEA : 123467103 Souderton Area SD

Printed 11/30/2023 3:33:18 PM

General Fund (10)				
2330 Tax Assessment and Collection Services	<u>Elementary</u>	<u>Secondary</u>	<u>Federal</u>	<u>Total</u>
100 <u>Personnel Services – Salaries</u>				
100 Personnel Services – Salaries				91,511.50
Total Personnel Services – Salaries				\$91,511.50
200 <u>Personnel Services – Employee Benefits</u>				
220 Social Security Contributions				7,000.60
Total Personnel Services – Employee Benefits				\$7,000.60
300 <u>Purchased Professional and Technical Services</u>				
330 Other Professional Services				140,049.36
Total Purchased Professional and Technical Services				\$140,049.36
500 <u>Other Purchased Services</u>				
520 Insurance – General				15,634.00
530 Communications				30,191.12
Total Other Purchased Services				\$45,825.12
600 <u>Supplies</u>				
610 General Supplies				1,075.88
Total Supplies				\$1,075.88
800 <u>Other Objects</u>				
810 Dues and Fees				210.00
Total Other Objects				\$210.00
Total 2330 Tax Assessment and Collection Services				\$285,672.46

LEA : 123467103 Souderton Area SD

Printed 11/30/2023 3:33:18 PM

General Fund (10)

2350 Legal and Accounting Services	<u>Elementary</u>	<u>Secondary</u>	<u>Federal</u>	<u>Total</u>
300 <u>Purchased Professional and Technical Services</u>				
330 Other Professional Services				143,023.07
Total Purchased Professional and Technical Services				\$143,023.07
Total 2350 Legal and Accounting Services				\$143,023.07

LEA : 123467103 Souderton Area SD

Printed 11/30/2023 3:33:18 PM

General Fund (10)

2360 Office of the Superintendent / Executive Director Services	<u>Elementary</u>	<u>Secondary</u>	<u>Federal</u>	<u>Total</u>
100 <u>Personnel Services – Salaries</u>				
100 Personnel Services – Salaries				284,729.28
Total Personnel Services – Salaries				\$284,729.28
200 <u>Personnel Services – Employee Benefits</u>				
210 Group Insurance – Contracted Provider				1,374.97
220 Social Security Contributions				17,177.12
230 PSERS Retirement Contributions				96,024.59
260 Workers' Compensation				1,383.14
270 Group Insurance – Self-Insurance				40,725.55
291 Other Retirement Plans				7,700.00
Total Personnel Services – Employee Benefits				\$164,385.37
500 <u>Other Purchased Services</u>				
530 Communications	6,083.12	6,083.12		12,166.24
549 Other Advertising/Public Relations				110.00
550 Printing and Binding				19.40
580 Travel				783.65
Total Other Purchased Services	\$6,083.12	\$6,083.12		\$13,079.29
600 <u>Supplies</u>				
610 General Supplies				3,732.29
630 Food				4,341.02
640 Books and Periodicals				104.93
Total Supplies				\$8,178.24
800 <u>Other Objects</u>				
810 Dues and Fees				11,607.96
Total Other Objects				\$11,607.96
Total 2360 Office of the Superintendent / Executive Director Services	\$6,083.12	\$6,083.12		\$481,980.14

LEA : 123467103 Souderton Area SD

Printed 11/30/2023 3:33:18 PM

General Fund (10)

2370 Community Relations Services	<u>Elementary</u>	<u>Secondary</u>	<u>Federal</u>	<u>Total</u>
500 <u>Other Purchased Services</u>				
530 Communications				1,680.00
Total Other Purchased Services				\$1,680.00
Total 2370 Community Relations Services				\$1,680.00

LEA : 123467103 Souderton Area SD

Printed 11/30/2023 3:33:18 PM

General Fund (10)

2380 Office of the Principal Services	Elementary	Secondary	Federal	Total
100 <u>Personnel Services – Salaries</u>				
100 Personnel Services – Salaries	1,172,831.25	1,717,178.64		2,890,009.89
Total Personnel Services – Salaries	\$1,172,831.25	\$1,717,178.64		\$2,890,009.89
200 <u>Personnel Services – Employee Benefits</u>				
210 Group Insurance – Contracted Provider	5,963.97	8,763.94		14,727.91
220 Social Security Contributions	84,754.89	116,650.61		201,405.50
230 PSERS Retirement Contributions	395,781.79	550,912.11		946,693.90
260 Workers' Compensation	5,389.72	7,478.12		12,867.84
270 Group Insurance – Self-Insurance	254,041.88	317,399.92		571,441.80
291 Other Retirement Plans	11,460.00	23,754.40		35,214.40
Total Personnel Services – Employee Benefits	\$757,392.25	\$1,024,959.10		\$1,782,351.35
300 <u>Purchased Professional and Technical Services</u>				
330 Other Professional Services	623.00	1,381.00		2,004.00
Total Purchased Professional and Technical Services	\$623.00	\$1,381.00		\$2,004.00
400 <u>Purchased Property Services</u>				
440 Rentals	23,242.23	16,167.92		39,410.15
Total Purchased Property Services	\$23,242.23	\$16,167.92		\$39,410.15
500 <u>Other Purchased Services</u>				
530 Communications	1,589.44	7,682.02		9,271.46
550 Printing and Binding	19,607.62	21,984.41		41,592.03
580 Travel	437.07	2,431.26		2,868.33
Total Other Purchased Services	\$21,634.13	\$32,097.69		\$53,731.82
600 <u>Supplies</u>				
610 General Supplies	5,815.39	24,932.74		30,748.13
630 Food	1,953.56	9,457.80		11,411.36
640 Books and Periodicals	1,041.15			1,041.15
Total Supplies	\$8,810.10	\$34,390.54		\$43,200.64
800 <u>Other Objects</u>				
810 Dues and Fees	5,445.00	3,630.00		9,075.00
Total Other Objects	\$5,445.00	\$3,630.00		\$9,075.00
Total 2380 Office of the Principal Services	\$1,989,977.96	\$2,829,804.89		\$4,819,782.85

LEA : 123467103 Souderton Area SD

Printed 11/30/2023 3:33:18 PM

General Fund (10)				
2390 Other Administration Services	<u>Elementary</u>	<u>Secondary</u>	<u>Federal</u>	<u>Total</u>
400 <u>Purchased Property Services</u>				
440 Rentals				1,343.50
Total Purchased Property Services				\$1,343.50
600 <u>Supplies</u>				
610 General Supplies				21,737.96
630 Food				180.00
Total Supplies				\$21,917.96
Total 2390 Other Administration Services				\$23,261.46

LEA : 123467103 Souderton Area SD

Printed 11/30/2023 3:33:18 PM

General Fund (10)				
2400 Support Services – Pupil Health	Elementary	Secondary	Federal	Total
100 Personnel Services – Salaries				
100 Personnel Services – Salaries				788,849.10
Total Personnel Services – Salaries				\$788,849.10
200 Personnel Services – Employee Benefits				
210 Group Insurance – Contracted Provider				22.20
220 Social Security Contributions				57,887.62
230 PSERS Retirement Contributions				277,460.93
250 Unemployment Compensation				169.80
260 Workers' Compensation				4,259.98
270 Group Insurance – Self-Insurance				166,699.80
Total Personnel Services – Employee Benefits				\$506,500.33
300 Purchased Professional and Technical Services				
322 Professional Educational Services – Ius				36,485.14
330 Other Professional Services				255,443.01
Total Purchased Professional and Technical Services				\$291,928.15
400 Purchased Property Services				
410 Cleaning Services				30.00
430 Repairs and Maintenance Services				1,178.47
Total Purchased Property Services				\$1,208.47
500 Other Purchased Services				
530 Communications				8.17
580 Travel				16.50
Total Other Purchased Services				\$24.67
600 Supplies				
610 General Supplies				21,049.32
640 Books and Periodicals				197.00
650 Supplies & Fees – Technology Related				16,207.50
Total Supplies				\$37,453.82
Total 2400 Support Services – Pupil Health				\$1,625,964.54

LEA : 123467103 Souderton Area SD

Printed 11/30/2023 3:33:18 PM

General Fund (10)

2420 Medical Services

Elementary Secondary Federal Total

100 <u>Personnel Services – Salaries</u>				
100 Personnel Services – Salaries				105.00
Total Personnel Services – Salaries				\$105.00
200 <u>Personnel Services – Employee Benefits</u>				
220 Social Security Contributions				7.41
230 PSERS Retirement Contributions				37.01
260 Workers’ Compensation				0.57
Total Personnel Services – Employee Benefits				\$44.99
300 <u>Purchased Professional and Technical Services</u>				
322 Professional Educational Services – Ius				36,485.14
330 Other Professional Services				252,221.01
Total Purchased Professional and Technical Services				\$288,706.15
Total 2420 Medical Services				\$288,856.14

LEA : 123467103 Souderton Area SD

Printed 11/30/2023 3:33:18 PM

General Fund (10)				
2440 Nursing Services				
	<u>Elementary</u>	<u>Secondary</u>	<u>Federal</u>	<u>Total</u>
100 <u>Personnel Services – Salaries</u>				
100 Personnel Services – Salaries				786,734.03
Total Personnel Services – Salaries				\$786,734.03
200 <u>Personnel Services – Employee Benefits</u>				
210 Group Insurance – Contracted Provider				22.08
220 Social Security Contributions				57,737.93
230 PSERS Retirement Contributions				276,715.16
250 Unemployment Compensation				169.47
260 Workers' Compensation				4,248.50
270 Group Insurance – Self-Insurance				164,399.84
Total Personnel Services – Employee Benefits				\$503,292.98
300 <u>Purchased Professional and Technical Services</u>				
330 Other Professional Services				3,222.00
Total Purchased Professional and Technical Services				\$3,222.00
400 <u>Purchased Property Services</u>				
410 Cleaning Services				30.00
430 Repairs and Maintenance Services				1,178.47
Total Purchased Property Services				\$1,208.47
500 <u>Other Purchased Services</u>				
530 Communications				8.17
580 Travel				16.50
Total Other Purchased Services				\$24.67
600 <u>Supplies</u>				
610 General Supplies				21,049.32
640 Books and Periodicals				197.00
650 Supplies & Fees – Technology Related				16,207.50
Total Supplies				\$37,453.82
Total 2440 Nursing Services				\$1,331,935.97

LEA : 123467103 Souderton Area SD

Printed 11/30/2023 3:33:18 PM

General Fund (10)

2450 Nonpublic Health Services	<u>Elementary</u>	<u>Secondary</u>	<u>Federal</u>	<u>Total</u>
100 <u>Personnel Services – Salaries</u>				
100 Personnel Services – Salaries				2,010.07
Total Personnel Services – Salaries				\$2,010.07
200 <u>Personnel Services – Employee Benefits</u>				
210 Group Insurance – Contracted Provider				0.12
220 Social Security Contributions				142.28
230 PSERS Retirement Contributions				708.76
250 Unemployment Compensation				0.33
260 Workers' Compensation				10.91
270 Group Insurance – Self-Insurance				2,299.96
Total Personnel Services – Employee Benefits				\$3,162.36
Total 2450 Nonpublic Health Services				\$5,172.43

LEA : 123467103 Souderton Area SD

Printed 11/30/2023 3:33:18 PM

General Fund (10)

2500 Support Services – Business	<u>Elementary</u>	<u>Secondary</u>	<u>Federal</u>	<u>Total</u>
100 <u>Personnel Services – Salaries</u>				
100 Personnel Services – Salaries				527,043.94
Total Personnel Services – Salaries				\$527,043.94
200 <u>Personnel Services – Employee Benefits</u>				
210 Group Insurance – Contracted Provider				2,494.34
220 Social Security Contributions				37,239.07
230 PSERS Retirement Contributions				180,255.26
250 Unemployment Compensation				3.62
260 Workers' Compensation				2,471.90
270 Group Insurance – Self-Insurance				135,511.51
291 Other Retirement Plans				7,346.21
Total Personnel Services – Employee Benefits				\$365,321.91
400 <u>Purchased Property Services</u>				
410 Cleaning Services				1,800.00
430 Repairs and Maintenance Services				1,120.12
440 Rentals				27,353.86
Total Purchased Property Services				\$30,273.98
500 <u>Other Purchased Services</u>				
530 Communications				9,874.16
580 Travel				1,435.80
Total Other Purchased Services				\$11,309.96
600 <u>Supplies</u>				
610 General Supplies				35,579.03
630 Food				2,242.93
650 Supplies & Fees – Technology Related				18,844.59
Total Supplies				\$56,666.55
800 <u>Other Objects</u>				
810 Dues and Fees				31,266.68
Total Other Objects				\$31,266.68
Total 2500 Support Services – Business				\$1,021,883.02

LEA : 123467103 Souderton Area SD

Printed 11/30/2023 3:33:18 PM

General Fund (10)				
2510 Fiscal Services				
	<u>Elementary</u>	<u>Secondary</u>	<u>Federal</u>	<u>Total</u>
100 <u>Personnel Services – Salaries</u>				
100 Personnel Services – Salaries				435,139.73
Total Personnel Services – Salaries				\$435,139.73
200 <u>Personnel Services – Employee Benefits</u>				
210 Group Insurance – Contracted Provider				2,317.24
220 Social Security Contributions				30,785.33
230 PSERS Retirement Contributions				147,849.97
260 Workers' Compensation				2,038.26
270 Group Insurance – Self-Insurance				95,185.14
291 Other Retirement Plans				7,346.21
Total Personnel Services – Employee Benefits				\$285,522.15
400 <u>Purchased Property Services</u>				
410 Cleaning Services				1,800.00
440 Rentals				27,353.86
Total Purchased Property Services				\$29,153.86
500 <u>Other Purchased Services</u>				
530 Communications				9,874.16
580 Travel				1,435.80
Total Other Purchased Services				\$11,309.96
600 <u>Supplies</u>				
610 General Supplies				32,528.25
630 Food				2,242.93
650 Supplies & Fees – Technology Related				18,844.59
Total Supplies				\$53,615.77
800 <u>Other Objects</u>				
810 Dues and Fees				31,266.68
Total Other Objects				\$31,266.68
Total 2510 Fiscal Services				\$846,008.15

LEA : 123467103 Souderton Area SD

Printed 11/30/2023 3:33:18 PM

General Fund (10)				
2511 Supervision of Fiscal Services - Head of Component	<u>Elementary</u>	<u>Secondary</u>	<u>Federal</u>	<u>Total</u>
100 <u>Personnel Services – Salaries</u>				
100 Personnel Services – Salaries				236,007.50
Total Personnel Services – Salaries				\$236,007.50
200 <u>Personnel Services – Employee Benefits</u>				
210 Group Insurance – Contracted Provider				1,397.12
220 Social Security Contributions				15,662.69
230 PSERS Retirement Contributions				80,761.47
260 Workers' Compensation				1,105.48
270 Group Insurance – Self-Insurance				37,869.98
291 Other Retirement Plans				5,479.21
Total Personnel Services – Employee Benefits				\$142,275.95
400 <u>Purchased Property Services</u>				
410 Cleaning Services				1,800.00
440 Rentals				27,353.86
Total Purchased Property Services				\$29,153.86
500 <u>Other Purchased Services</u>				
530 Communications				9,874.16
580 Travel				1,435.80
Total Other Purchased Services				\$11,309.96
600 <u>Supplies</u>				
610 General Supplies				32,528.25
630 Food				2,242.93
650 Supplies & Fees – Technology Related				18,844.59
Total Supplies				\$53,615.77
800 <u>Other Objects</u>				
810 Dues and Fees				4,762.51
Total Other Objects				\$4,762.51
Total 2511 Supervision of Fiscal Services - Head of Component				\$477,125.55

LEA : 123467103 Souderton Area SD

Printed 11/30/2023 3:33:18 PM

General Fund (10)

2513 Receiving and Disbursing Funds Services	<u>Elementary</u>	<u>Secondary</u>	<u>Federal</u>	<u>Total</u>
100 <u>Personnel Services – Salaries</u>				
100 Personnel Services – Salaries				26,289.13
Total Personnel Services – Salaries				\$26,289.13
200 <u>Personnel Services – Employee Benefits</u>				
210 Group Insurance – Contracted Provider				49.20
220 Social Security Contributions				1,862.41
230 PSERS Retirement Contributions				9,269.53
260 Workers' Compensation				123.99
270 Group Insurance – Self-Insurance				8,470.91
Total Personnel Services – Employee Benefits				\$19,776.04
Total 2513 Receiving and Disbursing Funds Services				\$46,065.17

LEA : 123467103 Souderton Area SD

Printed 11/30/2023 3:33:18 PM

General Fund (10)

2514 Payroll Services

Elementary Secondary Federal Total

100 <u>Personnel Services – Salaries</u>				
100 Personnel Services – Salaries				64,714.90
Total Personnel Services – Salaries				\$64,714.90
200 <u>Personnel Services – Employee Benefits</u>				
210 Group Insurance – Contracted Provider				127.92
220 Social Security Contributions				4,953.25
230 PSERS Retirement Contributions				20,688.85
260 Workers' Compensation				303.98
270 Group Insurance – Self-Insurance				24,968.74
291 Other Retirement Plans				1,550.00
Total Personnel Services – Employee Benefits				\$52,592.74
Total 2514 Payroll Services				\$117,307.64

LEA : 123467103 Souderton Area SD

Printed 11/30/2023 3:33:18 PM

General Fund (10)

2515 Financial Accounting Services	<u>Elementary</u>	<u>Secondary</u>	<u>Federal</u>	<u>Total</u>
100 <u>Personnel Services – Salaries</u>				
100 Personnel Services – Salaries				108,128.20
Total Personnel Services – Salaries				\$108,128.20
200 <u>Personnel Services – Employee Benefits</u>				
210 Group Insurance – Contracted Provider				743.00
220 Social Security Contributions				8,306.98
230 PSERS Retirement Contributions				37,130.12
260 Workers' Compensation				504.81
270 Group Insurance – Self-Insurance				23,875.51
291 Other Retirement Plans				317.00
Total Personnel Services – Employee Benefits				\$70,877.42
Total 2515 Financial Accounting Services				\$179,005.62

LEA : 123467103 Souderton Area SD

Printed 11/30/2023 3:33:18 PM

General Fund (10)				
2519 Other Fiscal Services	<u>Elementary</u>	<u>Secondary</u>	<u>Federal</u>	<u>Total</u>
800 <u>Other Objects</u>				
810 Dues and Fees				26,504.17
Total Other Objects				\$26,504.17
Total 2519 Other Fiscal Services				\$26,504.17

LEA : 123467103 Souderton Area SD

Printed 11/30/2023 3:33:18 PM

General Fund (10)					
2520 Purchasing Services		<u>Elementary</u>	<u>Secondary</u>	<u>Federal</u>	<u>Total</u>
100 <u>Personnel Services – Salaries</u>					
100 Personnel Services – Salaries					46,991.00
Total Personnel Services – Salaries					\$46,991.00
200 <u>Personnel Services – Employee Benefits</u>					
210 Group Insurance – Contracted Provider					88.55
220 Social Security Contributions					3,074.61
230 PSERS Retirement Contributions					16,568.99
250 Unemployment Compensation					0.49
260 Workers' Compensation					221.36
270 Group Insurance – Self-Insurance					19,914.75
Total Personnel Services – Employee Benefits					\$39,868.75
Total 2520 Purchasing Services					\$86,859.75

LEA : 123467103 Souderton Area SD

Printed 11/30/2023 3:33:18 PM

General Fund (10)

2540 Printing, Publishing and Duplicating Services	<u>Elementary</u>	<u>Secondary</u>	<u>Federal</u>	<u>Total</u>
100 <u>Personnel Services – Salaries</u>				
100 Personnel Services – Salaries				44,913.21
Total Personnel Services – Salaries				\$44,913.21
200 <u>Personnel Services – Employee Benefits</u>				
210 Group Insurance – Contracted Provider				88.55
220 Social Security Contributions				3,379.13
230 PSERS Retirement Contributions				15,836.30
250 Unemployment Compensation				3.13
260 Workers' Compensation				212.28
270 Group Insurance – Self-Insurance				20,411.62
Total Personnel Services – Employee Benefits				\$39,931.01
400 <u>Purchased Property Services</u>				
430 Repairs and Maintenance Services				1,120.12
Total Purchased Property Services				\$1,120.12
600 <u>Supplies</u>				
610 General Supplies				3,050.78
Total Supplies				\$3,050.78
Total 2540 Printing, Publishing and Duplicating Services				\$89,015.12

LEA : 123467103 Souderton Area SD

Printed 11/30/2023 3:33:18 PM

General Fund (10)

2600 Operation and Maintenance of Plant Services	Elementary	Secondary	Federal	Total
100 <u>Personnel Services – Salaries</u>				
100 Personnel Services – Salaries				3,941,882.60
Total Personnel Services – Salaries				\$3,941,882.60
200 <u>Personnel Services – Employee Benefits</u>				
210 Group Insurance – Contracted Provider				7,830.15
220 Social Security Contributions				288,853.34
230 PSERS Retirement Contributions				1,362,488.74
250 Unemployment Compensation				190.38
260 Workers' Compensation				18,866.10
270 Group Insurance – Self-Insurance				1,079,738.62
291 Other Retirement Plans				1,641.34
Total Personnel Services – Employee Benefits				\$2,759,608.67
300 <u>Purchased Professional and Technical Services</u>				
350 Security / Safety Services				37,173.37
Total Purchased Professional and Technical Services				\$37,173.37
400 <u>Purchased Property Services</u>				
410 Cleaning Services				65,920.43
420 Utility Services				165,482.49
430 Repairs and Maintenance Services				852,061.40
440 Rentals				19,234.22
450 Construction Services				26,140.00
Total Purchased Property Services				\$1,128,838.54
500 <u>Other Purchased Services</u>				
522 Automotive Liability Insurance				23,918.00
523 General Property and Liability Insurance				336,604.00
530 Communications				136,598.06
580 Travel				1,343.03
Total Other Purchased Services				\$498,463.09
600 <u>Supplies</u>				
610 General Supplies	187,840.05	279,774.70		467,614.75
620 Energy				1,439,326.26
650 Supplies & Fees – Technology Related				37,416.23
Total Supplies	\$187,840.05	\$279,774.70		\$1,944,357.24
700 <u>Property</u>				
752 Capital Equipment – Original and Additional			29,167.01	29,167.01
756 Capitalized Technology Equipment – Original				54,404.50
762 Capitalized Equipment - Replacement				105,408.60
Total Property			\$29,167.01	\$188,980.11
800 <u>Other Objects</u>				
810 Dues and Fees				1,216.88
Total Other Objects				\$1,216.88
Total 2600 Operation and Maintenance of Plant Services	\$187,840.05	\$279,774.70	\$29,167.01	\$10,500,520.50

LEA : 123467103 Souderton Area SD

Printed 11/30/2023 3:33:18 PM

General Fund (10)

2610 Supervision of Operation and Maintenance of Plant Services	<u>Elementary</u>	<u>Secondary</u>	<u>Federal</u>	<u>Total</u>
100 <u>Personnel Services – Salaries</u>				
100 Personnel Services – Salaries				146,400.07
Total Personnel Services – Salaries				\$146,400.07
200 <u>Personnel Services – Employee Benefits</u>				
210 Group Insurance – Contracted Provider				870.24
220 Social Security Contributions				10,812.58
230 PSERS Retirement Contributions				50,514.61
260 Workers' Compensation				686.24
270 Group Insurance – Self-Insurance				67,336.83
291 Other Retirement Plans				327.00
Total Personnel Services – Employee Benefits				\$130,547.50
400 <u>Purchased Property Services</u>				
440 Rentals				900.00
Total Purchased Property Services				\$900.00
500 <u>Other Purchased Services</u>				
580 Travel				1,343.03
Total Other Purchased Services				\$1,343.03
800 <u>Other Objects</u>				
810 Dues and Fees				250.00
Total Other Objects				\$250.00
Total 2610 Supervision of Operation and Maintenance of Plant Services				\$279,440.60

LEA : 123467103 Souderton Area SD

Printed 11/30/2023 3:33:18 PM

General Fund (10)				
2611 Supervision of Operation and Maintenance of Plant Services – Head of Component	<u>Elementary</u>	<u>Secondary</u>	<u>Federal</u>	<u>Total</u>
100 <u>Personnel Services – Salaries</u>				
100 Personnel Services – Salaries				146,400.07
Total Personnel Services – Salaries				\$146,400.07
200 <u>Personnel Services – Employee Benefits</u>				
210 Group Insurance – Contracted Provider				870.24
220 Social Security Contributions				10,812.58
230 PSERS Retirement Contributions				50,514.61
260 Workers' Compensation				686.24
270 Group Insurance – Self-Insurance				67,336.83
291 Other Retirement Plans				327.00
Total Personnel Services – Employee Benefits				\$130,547.50
400 <u>Purchased Property Services</u>				
440 Rentals				900.00
Total Purchased Property Services				\$900.00
500 <u>Other Purchased Services</u>				
580 Travel				1,343.03
Total Other Purchased Services				\$1,343.03
800 <u>Other Objects</u>				
810 Dues and Fees				250.00
Total Other Objects				\$250.00
Total 2611 Supervision of Operation and Maintenance of Plant Services – Head of Component				\$279,440.60

LEA : 123467103 Souderton Area SD

Printed 11/30/2023 3:33:18 PM

General Fund (10)

2620 Operation of Buildings Services	Elementary	Secondary	Federal	Total
100 <u>Personnel Services – Salaries</u>				
100 Personnel Services – Salaries				3,285,305.61
Total Personnel Services – Salaries				\$3,285,305.61
200 <u>Personnel Services – Employee Benefits</u>				
210 Group Insurance – Contracted Provider				6,733.59
220 Social Security Contributions				240,101.11
230 PSERS Retirement Contributions				1,132,234.18
250 Unemployment Compensation				109.12
260 Workers' Compensation				15,460.51
270 Group Insurance – Self-Insurance				949,179.72
Total Personnel Services – Employee Benefits				\$2,343,818.23
400 <u>Purchased Property Services</u>				
430 Repairs and Maintenance Services				704,366.37
440 Rentals				17,506.22
450 Construction Services				3,950.00
Total Purchased Property Services				\$725,822.59
600 <u>Supplies</u>				
610 General Supplies	157,413.84	259,090.65		416,504.49
Total Supplies	\$157,413.84	\$259,090.65		\$416,504.49
700 <u>Property</u>				
752 Capital Equipment – Original and Additional			29,167.01	29,167.01
762 Capitalized Equipment - Replacement				105,408.60
Total Property			\$29,167.01	\$134,575.61
Total 2620 Operation of Buildings Services	\$157,413.84	\$259,090.65	\$29,167.01	\$6,906,026.53

LEA : 123467103 Souderton Area SD

Printed 11/30/2023 3:33:18 PM

General Fund (10)

2630 Care and Upkeep of Grounds Services	<u>Elementary</u>	<u>Secondary</u>	<u>Federal</u>	<u>Total</u>
100 <u>Personnel Services – Salaries</u>				
100 Personnel Services – Salaries				115,626.46
Total Personnel Services – Salaries				\$115,626.46
200 <u>Personnel Services – Employee Benefits</u>				
210 Group Insurance – Contracted Provider				226.32
220 Social Security Contributions				8,454.37
230 PSERS Retirement Contributions				40,681.81
260 Workers' Compensation				539.85
270 Group Insurance – Self-Insurance				35,210.89
Total Personnel Services – Employee Benefits				\$85,113.24
400 <u>Purchased Property Services</u>				
430 Repairs and Maintenance Services				87,313.22
450 Construction Services				22,190.00
Total Purchased Property Services				\$109,503.22
600 <u>Supplies</u>				
610 General Supplies	15,552.16	5,810.00		21,362.16
Total Supplies	\$15,552.16	\$5,810.00		\$21,362.16
Total 2630 Care and Upkeep of Grounds Services	\$15,552.16	\$5,810.00		\$331,605.08

LEA : 123467103 Souderton Area SD

Printed 11/30/2023 3:33:18 PM

General Fund (10)				
2650 Vehicle Operation and Maintenance Services (Other Than Student Transportation Vehicles)	<u>Elementary</u>	<u>Secondary</u>	<u>Federal</u>	<u>Total</u>
400 <u>Purchased Property Services</u>				
430 Repairs and Maintenance Services				20,145.49
Total Purchased Property Services				\$20,145.49
500 <u>Other Purchased Services</u>				
522 Automotive Liability Insurance				23,918.00
Total Other Purchased Services				\$23,918.00
600 <u>Supplies</u>				
610 General Supplies	5,292.39	5,292.38		10,584.77
620 Energy				5,503.82
Total Supplies	\$5,292.39	\$5,292.38		\$16,088.59
800 <u>Other Objects</u>				
810 Dues and Fees				302.92
Total Other Objects				\$302.92
Total 2650 Vehicle Operation and Maintenance Services (Other Than Student Transportation Vehicles)	\$5,292.39	\$5,292.38		\$60,455.00

LEA : 123467103 Souderton Area SD

Printed 11/30/2023 3:33:18 PM

General Fund (10)				
2660 Safety and Security Services	<u>Elementary</u>	<u>Secondary</u>	<u>Federal</u>	<u>Total</u>
100 <u>Personnel Services – Salaries</u>				
100 Personnel Services – Salaries				394,550.46
Total Personnel Services – Salaries				\$394,550.46
200 <u>Personnel Services – Employee Benefits</u>				
220 Social Security Contributions				29,485.28
230 PSERS Retirement Contributions				139,058.14
250 Unemployment Compensation				81.26
260 Workers' Compensation				2,179.50
270 Group Insurance – Self-Insurance				28,011.18
291 Other Retirement Plans				1,314.34
Total Personnel Services – Employee Benefits				\$200,129.70
300 <u>Purchased Professional and Technical Services</u>				
350 Security / Safety Services				37,173.37
Total Purchased Professional and Technical Services				\$37,173.37
400 <u>Purchased Property Services</u>				
430 Repairs and Maintenance Services				40,236.32
Total Purchased Property Services				\$40,236.32
600 <u>Supplies</u>				
610 General Supplies	9,581.66	9,581.67		19,163.33
650 Supplies & Fees – Technology Related				33,469.23
Total Supplies	\$9,581.66	\$9,581.67		\$52,632.56
700 <u>Property</u>				
756 Capitalized Technology Equipment – Original				54,404.50
Total Property				\$54,404.50
800 <u>Other Objects</u>				
810 Dues and Fees				280.00
Total Other Objects				\$280.00
Total 2660 Safety and Security Services	\$9,581.66	\$9,581.67		\$779,406.91

LEA : 123467103 Souderton Area SD

Printed 11/30/2023 3:33:18 PM

General Fund (10)

2690 Other Operation and Maintenance of Plant Services	<u>Elementary</u>	<u>Secondary</u>	<u>Federal</u>	<u>Total</u>
400 <u>Purchased Property Services</u>				
410 Cleaning Services				65,920.43
420 Utility Services				165,482.49
440 Rentals				828.00
Total Purchased Property Services				\$232,230.92
500 <u>Other Purchased Services</u>				
523 General Property and Liability Insurance				336,604.00
530 Communications				136,598.06
Total Other Purchased Services				\$473,202.06
600 <u>Supplies</u>				
620 Energy				1,433,822.44
650 Supplies & Fees – Technology Related				3,947.00
Total Supplies				\$1,437,769.44
800 <u>Other Objects</u>				
810 Dues and Fees				383.96
Total Other Objects				\$383.96
Total 2690 Other Operation and Maintenance of Plant Services				\$2,143,586.38

LEA : 123467103 Souderton Area SD

Printed 11/30/2023 3:33:18 PM

General Fund (10)

2700 Student Transportation Services	<u>Elementary</u>	<u>Secondary</u>	<u>Federal</u>	<u>Total</u>
500 <u>Other Purchased Services</u>				
511 Student Transportation Services from Another LEA Within the State				16,987.32
513 Contracted Carriers				8,101,364.65
516 Student Transportation Services From the IU				185,132.50
519 Student Transportation Services From Other Sources				253,029.09
Total Other Purchased Services				\$8,556,513.56
600 <u>Supplies</u>				
650 Supplies & Fees – Technology Related				7,619.50
Total Supplies				\$7,619.50
Total 2700 Student Transportation Services				\$8,564,133.06

LEA : 123467103 Souderton Area SD

Printed 11/30/2023 3:33:18 PM

General Fund (10)

2720 Vehicle Operation Services	<u>Elementary</u>	<u>Secondary</u>	<u>Federal</u>	<u>Total</u>
500 <u>Other Purchased Services</u>				
513 Contracted Carriers				6,994,994.41
516 Student Transportation Services From the IU				185,132.50
519 Student Transportation Services From Other Sources				253,029.09
Total Other Purchased Services				\$7,433,156.00
600 <u>Supplies</u>				
650 Supplies & Fees – Technology Related				7,619.50
Total Supplies				\$7,619.50
Total 2720 Vehicle Operation Services				\$7,440,775.50

LEA : 123467103 Souderton Area SD

Printed 11/30/2023 3:33:18 PM

General Fund (10)

2750 Nonpublic Transportation

Elementary Secondary Federal Total

500 Other Purchased Services

511 Student Transportation Services from Another LEA Within the State 16,987.32

513 Contracted Carriers 1,106,370.24

Total Other Purchased Services \$1,123,357.56

Total 2750 Nonpublic Transportation \$1,123,357.56

LEA : 123467103 Souderton Area SD

Printed 11/30/2023 3:33:18 PM

General Fund (10)

2800 Support Services – Central

Elementary Secondary Federal Total

100 <u>Personnel Services – Salaries</u>				
100 Personnel Services – Salaries				937,813.44
Total Personnel Services – Salaries				\$937,813.44
200 <u>Personnel Services – Employee Benefits</u>				
210 Group Insurance – Contracted Provider				5,324.89
220 Social Security Contributions				66,705.46
230 PSERS Retirement Contributions				321,858.93
240 Tuition Reimbursement				13,293.00
250 Unemployment Compensation				32.73
260 Workers' Compensation				4,394.99
270 Group Insurance – Self-Insurance				183,167.25
291 Other Retirement Plans				22,505.68
Total Personnel Services – Employee Benefits				\$617,282.93
300 <u>Purchased Professional and Technical Services</u>				
329 Professional Educational Services – Other				3,387.50
330 Other Professional Services				85,780.84
340 Technical Services			53,626.00	56,902.00
360 Employee Training and Development Services				5,168.00
Total Purchased Professional and Technical Services			\$53,626.00	\$151,238.34
400 <u>Purchased Property Services</u>				
430 Repairs and Maintenance Services				1,009.57
Total Purchased Property Services				\$1,009.57
500 <u>Other Purchased Services</u>				
530 Communications				331,142.86
550 Printing and Binding				362.86
580 Travel				1,818.31
Total Other Purchased Services				\$333,324.03
600 <u>Supplies</u>				
610 General Supplies				79,616.04
630 Food				225.00
650 Supplies & Fees – Technology Related				789,612.48
Total Supplies				\$869,453.52
700 <u>Property</u>				
738 Technology Software Lease and Other Right-to-Use Arrangements				85,663.93
758 Capitalized Technology Software - Original				18,087.50
766 Capitalized Technology Equipment – Replacement				315,435.98
Total Property				\$419,187.41
800 <u>Other Objects</u>				
810 Dues and Fees				9,628.61
Total Other Objects				\$9,628.61
Total 2800 Support Services – Central			\$53,626.00	\$3,338,937.85

LEA : 123467103 Souderton Area SD

Printed 11/30/2023 3:33:18 PM

General Fund (10)

2810 Planning, Research, Development and Evaluation Services	<u>Elementary</u>	<u>Secondary</u>	<u>Federal</u>	<u>Total</u>
100 <u>Personnel Services – Salaries</u>				
100 Personnel Services – Salaries				118,867.80
Total Personnel Services – Salaries				\$118,867.80
200 <u>Personnel Services – Employee Benefits</u>				
210 Group Insurance – Contracted Provider				814.96
220 Social Security Contributions				9,007.56
230 PSERS Retirement Contributions				40,817.96
260 Workers' Compensation				555.55
270 Group Insurance – Self-Insurance				22,324.32
291 Other Retirement Plans				3,755.64
Total Personnel Services – Employee Benefits				\$77,275.99
Total 2810 Planning, Research, Development and Evaluation Services				\$196,143.79

LEA : 123467103 Souderton Area SD

Printed 11/30/2023 3:33:18 PM

General Fund (10)

2820 Information Services	<u>Elementary</u>	<u>Secondary</u>	<u>Federal</u>	<u>Total</u>
100 <u>Personnel Services – Salaries</u>				
100 Personnel Services – Salaries				87,661.70
Total Personnel Services – Salaries				\$87,661.70
200 <u>Personnel Services – Employee Benefits</u>				
210 Group Insurance – Contracted Provider				570.95
220 Social Security Contributions				6,191.95
230 PSERS Retirement Contributions				30,102.26
250 Unemployment Compensation				9.60
260 Workers' Compensation				473.34
270 Group Insurance – Self-Insurance				19,598.33
291 Other Retirement Plans				3,750.00
Total Personnel Services – Employee Benefits				\$60,696.43
Total 2820 Information Services				\$148,358.13

LEA : 123467103 Souderton Area SD

Printed 11/30/2023 3:33:18 PM

General Fund (10)

2821 Supervision of Information Services	<u>Elementary</u>	<u>Secondary</u>	<u>Federal</u>	<u>Total</u>
100 <u>Personnel Services – Salaries</u>				
100 Personnel Services – Salaries				87,661.70
Total Personnel Services – Salaries				\$87,661.70
200 <u>Personnel Services – Employee Benefits</u>				
210 Group Insurance – Contracted Provider				570.95
220 Social Security Contributions				6,191.95
230 PSERS Retirement Contributions				30,102.26
250 Unemployment Compensation				9.60
260 Workers' Compensation				473.34
270 Group Insurance – Self-Insurance				19,598.33
291 Other Retirement Plans				3,750.00
Total Personnel Services – Employee Benefits				\$60,696.43
Total 2821 Supervision of Information Services				\$148,358.13

LEA : 123467103 Souderton Area SD

Printed 11/30/2023 3:33:18 PM

General Fund (10)

2830 Staff Services

	<u>Elementary</u>	<u>Secondary</u>	<u>Federal</u>	<u>Total</u>
100 <u>Personnel Services – Salaries</u>				
100 Personnel Services – Salaries				376,275.94
Total Personnel Services – Salaries				\$376,275.94
200 <u>Personnel Services – Employee Benefits</u>				
210 Group Insurance – Contracted Provider				1,500.82
220 Social Security Contributions				25,616.65
230 PSERS Retirement Contributions				128,270.00
240 Tuition Reimbursement				13,293.00
250 Unemployment Compensation				23.13
260 Workers' Compensation				1,704.09
270 Group Insurance – Self-Insurance				87,618.70
291 Other Retirement Plans				11,200.00
Total Personnel Services – Employee Benefits				\$269,226.39
300 <u>Purchased Professional and Technical Services</u>				
329 Professional Educational Services – Other				3,387.50
330 Other Professional Services				555.00
360 Employee Training and Development Services				5,168.00
Total Purchased Professional and Technical Services				\$9,110.50
500 <u>Other Purchased Services</u>				
550 Printing and Binding				277.36
580 Travel				825.79
Total Other Purchased Services				\$1,103.15
600 <u>Supplies</u>				
610 General Supplies				2,049.30
630 Food				225.00
650 Supplies & Fees – Technology Related				61,796.36
Total Supplies				\$64,070.66
800 <u>Other Objects</u>				
810 Dues and Fees				9,628.61
Total Other Objects				\$9,628.61
Total 2830 Staff Services				\$729,415.25

LEA : 123467103 Souderton Area SD

Printed 11/30/2023 3:33:18 PM

General Fund (10)				
2831 Supervision of Staff Services	<u>Elementary</u>	<u>Secondary</u>	<u>Federal</u>	<u>Total</u>
100 <u>Personnel Services – Salaries</u>				
100 Personnel Services – Salaries				262,088.46
Total Personnel Services – Salaries				\$262,088.46
200 <u>Personnel Services – Employee Benefits</u>				
210 Group Insurance – Contracted Provider				1,446.31
220 Social Security Contributions				17,442.52
230 PSERS Retirement Contributions				88,166.11
260 Workers' Compensation				1,169.52
270 Group Insurance – Self-Insurance				34,482.29
291 Other Retirement Plans				11,200.00
Total Personnel Services – Employee Benefits				\$153,906.75
300 <u>Purchased Professional and Technical Services</u>				
329 Professional Educational Services – Other				3,387.50
330 Other Professional Services				555.00
Total Purchased Professional and Technical Services				\$3,942.50
500 <u>Other Purchased Services</u>				
550 Printing and Binding				277.36
Total Other Purchased Services				\$277.36
600 <u>Supplies</u>				
610 General Supplies				2,049.30
630 Food				225.00
650 Supplies & Fees – Technology Related				43,898.05
Total Supplies				\$46,172.35
800 <u>Other Objects</u>				
810 Dues and Fees				9,628.61
Total Other Objects				\$9,628.61
Total 2831 Supervision of Staff Services				\$476,016.03

LEA : 123467103 Souderton Area SD

Printed 11/30/2023 3:33:18 PM

General Fund (10)

2833 Staff Accounting Services

Elementary Secondary Federal Total

600 <u>Supplies</u>				
650 Supplies & Fees – Technology Related				17,898.31

Total Supplies				\$17,898.31
Total 2833 Staff Accounting Services				\$17,898.31

LEA : 123467103 Souderton Area SD

Printed 11/30/2023 3:33:18 PM

General Fund (10)

2834 Staff Development Services – Non-Instructional, Certified Staff Only	<u>Elementary</u>	<u>Secondary</u>	<u>Federal</u>	<u>Total</u>
300 <u>Purchased Professional and Technical Services</u>				
360 Employee Training and Development Services				375.00
Total Purchased Professional and Technical Services				\$375.00
Total 2834 Staff Development Services – Non-Instructional, Certified Staff Only				\$375.00

LEA : 123467103 Souderton Area SD

Printed 11/30/2023 3:33:18 PM

General Fund (10)				
2835 Health Services				
	<u>Elementary</u>	<u>Secondary</u>	<u>Federal</u>	<u>Total</u>
100 <u>Personnel Services – Salaries</u>				
100 Personnel Services – Salaries				41,421.00
Total Personnel Services – Salaries				\$41,421.00
200 <u>Personnel Services – Employee Benefits</u>				
210 Group Insurance – Contracted Provider				34.07
220 Social Security Contributions				2,923.96
230 PSERS Retirement Contributions				14,604.94
250 Unemployment Compensation				1.70
260 Workers' Compensation				194.85
270 Group Insurance – Self-Insurance				20,077.21
Total Personnel Services – Employee Benefits				\$37,836.73
Total 2835 Health Services				\$79,257.73

LEA : 123467103 Souderton Area SD

Printed 11/30/2023 3:33:18 PM

General Fund (10)

2836 Staff Development Services – Non-Instructional, Non-Certified Staff Only	<u>Elementary</u>	<u>Secondary</u>	<u>Federal</u>	<u>Total</u>
200 <u>Personnel Services – Employee Benefits</u>				
240 Tuition Reimbursement				13,293.00
Total Personnel Services – Employee Benefits				\$13,293.00
300 <u>Purchased Professional and Technical Services</u>				
360 Employee Training and Development Services				4,793.00
Total Purchased Professional and Technical Services				\$4,793.00
500 <u>Other Purchased Services</u>				
580 Travel				825.79
Total Other Purchased Services				\$825.79
Total 2836 Staff Development Services – Non-Instructional, Non-Certified Staff Only				\$18,911.79

LEA : 123467103 Souderton Area SD

Printed 11/30/2023 3:33:18 PM

General Fund (10)

2839 Other Staff Services

Elementary Secondary Federal Total

100 <u>Personnel Services – Salaries</u>				
100 Personnel Services – Salaries				72,766.48
Total Personnel Services – Salaries				\$72,766.48
200 <u>Personnel Services – Employee Benefits</u>				
210 Group Insurance – Contracted Provider				20.44
220 Social Security Contributions				5,250.17
230 PSERS Retirement Contributions				25,498.95
250 Unemployment Compensation				21.43
260 Workers' Compensation				339.72
270 Group Insurance – Self-Insurance				33,059.20
Total Personnel Services – Employee Benefits				\$64,189.91
Total 2839 Other Staff Services				\$136,956.39

LEA : 123467103 Souderton Area SD

Printed 11/30/2023 3:33:18 PM

General Fund (10)				
2840 Data Processing Services		<u>Elementary</u>	<u>Secondary</u>	<u>Federal</u> <u>Total</u>
100 <u>Personnel Services – Salaries</u>				
100 Personnel Services – Salaries				355,008.00
Total Personnel Services – Salaries				\$355,008.00
200 <u>Personnel Services – Employee Benefits</u>				
210 Group Insurance – Contracted Provider				2,438.16
220 Social Security Contributions				25,889.30
230 PSERS Retirement Contributions				122,668.71
260 Workers' Compensation				1,662.01
270 Group Insurance – Self-Insurance				53,625.90
291 Other Retirement Plans				3,800.04
Total Personnel Services – Employee Benefits				\$210,084.12
300 <u>Purchased Professional and Technical Services</u>				
330 Other Professional Services				85,225.84
340 Technical Services			53,626.00	56,902.00
Total Purchased Professional and Technical Services			\$53,626.00	\$142,127.84
400 <u>Purchased Property Services</u>				
430 Repairs and Maintenance Services				1,009.57
Total Purchased Property Services				\$1,009.57
500 <u>Other Purchased Services</u>				
530 Communications				331,142.86
550 Printing and Binding				85.50
580 Travel				992.52
Total Other Purchased Services				\$332,220.88
600 <u>Supplies</u>				
610 General Supplies				77,566.74
650 Supplies & Fees – Technology Related				727,816.12
Total Supplies				\$805,382.86
700 <u>Property</u>				
738 Technology Software Lease and Other Right-to-Use Arrangements				85,663.93
758 Capitalized Technology Software - Original				18,087.50
766 Capitalized Technology Equipment – Replacement				315,435.98
Total Property				\$419,187.41
Total 2840 Data Processing Services			\$53,626.00	\$2,265,020.68

LEA : 123467103 Souderton Area SD

Printed 11/30/2023 3:33:18 PM

General Fund (10)

2900 Other Support Services	<u>Elementary</u>	<u>Secondary</u>	<u>Federal</u>	<u>Total</u>
500 <u>Other Purchased Services</u>				
595 IU Payments By Withholding				80,676.75
Total Other Purchased Services				\$80,676.75
Total 2900 Other Support Services				\$80,676.75

LEA : 123467103 Souderton Area SD

Printed 11/30/2023 3:33:18 PM

General Fund (10)

2910 Support Services Not Listed Elsewhere In the 2000 Series

Elementary Secondary Federal Total

500 Other Purchased Services

595 IU Payments By Withholding 80,676.75

Total Other Purchased Services \$80,676.75

Total 2910 Support Services Not Listed Elsewhere In the 2000 Series \$80,676.75

LEA : 123467103 Souderton Area SD

Printed 11/30/2023 3:33:26 PM

General Fund (10)

3000 Operation of Non-Instructional Services		<u>Total</u>
100 <u>Personnel Services – Salaries</u>		
100 Personnel Services – Salaries	826,855.14	
Total Personnel Services – Salaries	\$826,855.14	
200 <u>Personnel Services – Employee Benefits</u>		
210 Group Insurance – Contracted Provider	295.20	
220 Social Security Contributions	62,429.56	
230 PSERS Retirement Contributions	283,778.74	
250 Unemployment Compensation	385.63	
260 Workers' Compensation	4,439.68	
270 Group Insurance – Self-Insurance	51,653.65	
291 Other Retirement Plans	1,550.00	
Total Personnel Services – Employee Benefits	\$404,532.46	
300 <u>Purchased Professional and Technical Services</u>		
330 Other Professional Services	22,948.71	
390 Other Purchased Professional and Technical Services	59,109.50	
Total Purchased Professional and Technical Services	\$82,058.21	
400 <u>Purchased Property Services</u>		
430 Repairs and Maintenance Services	54,220.17	
440 Rentals	9,263.40	
Total Purchased Property Services	\$63,483.57	
500 <u>Other Purchased Services</u>		
510 Student Transportation Services	181,296.44	
520 Insurance – General	7,207.00	
530 Communications	1,567.64	
550 Printing and Binding	2,459.27	
580 Travel	15,412.98	
599 Other Miscellaneous Purchased Services	45,629.51	
Total Other Purchased Services	\$253,572.84	
600 <u>Supplies</u>		
610 General Supplies	109,824.84	
630 Food	18,682.12	
640 Books and Periodicals	34,842.79	
650 Supplies & Fees – Technology Related	15,114.30	
Total Supplies	\$178,464.05	
700 <u>Property</u>		
752 Capital Equipment – Original and Additional	13,600.77	
762 Capitalized Equipment - Replacement	7,827.96	
Total Property	\$21,428.73	
800 <u>Other Objects</u>		
810 Dues and Fees	34,904.61	
890 Miscellaneous Expenditures	36,225.00	

LEA : 123467103 Souderton Area SD

Printed 11/30/2023 3:33:26 PM

General Fund (10)

3000 Operation of Non-Instructional Services

	<u>Total</u>
Total Other Objects	\$71,129.61
Total 3000 Operation of Non-Instructional Services	\$1,901,524.61

LEA : 123467103 Souderton Area SD

Printed 11/30/2023 3:33:26 PM

Page - 3 of 5

General Fund (10)				
3200 Student Activities	Elementary	Secondary	Federal	Total
100 Personnel Services – Salaries				
100 Personnel Services – Salaries				826,855.14
Total Personnel Services – Salaries				\$826,855.14
200 Personnel Services – Employee Benefits				
210 Group Insurance – Contracted Provider				295.20
220 Social Security Contributions				62,429.56
230 PSERS Retirement Contributions				283,778.74
250 Unemployment Compensation				385.63
260 Workers' Compensation				4,439.68
270 Group Insurance – Self-Insurance				51,653.65
291 Other Retirement Plans				1,550.00
Total Personnel Services – Employee Benefits				\$404,532.46
300 Purchased Professional and Technical Services				
330 Other Professional Services				22,948.71
390 Other Purchased Professional and Technical Services				59,109.50
Total Purchased Professional and Technical Services				\$82,058.21
400 Purchased Property Services				
430 Repairs and Maintenance Services				54,220.17
440 Rentals				9,263.40
Total Purchased Property Services				\$63,483.57
500 Other Purchased Services				
510 Student Transportation Services				181,296.44
520 Insurance – General				7,207.00
530 Communications				1,567.64
550 Printing and Binding				2,459.27
580 Travel				15,412.98
599 Other Miscellaneous Purchased Services				45,629.51
Total Other Purchased Services				\$253,572.84
600 Supplies				
610 General Supplies				109,824.84
630 Food				18,682.12
640 Books and Periodicals				34,842.79
650 Supplies & Fees – Technology Related				15,114.30
Total Supplies				\$178,464.05
700 Property				
752 Capital Equipment – Original and Additional				13,600.77
762 Capitalized Equipment - Replacement				7,827.96
Total Property				\$21,428.73
800 Other Objects				
810 Dues and Fees				34,904.61
890 Miscellaneous Expenditures				1,075.00

LEA : 123467103 Souderton Area SD

Printed 11/30/2023 3:33:26 PM

General Fund (10)

3200 Student Activities

Elementary Secondary Federal Total

Total Other Objects				\$35,979.61
Total 3200 Student Activities				\$1,866,374.61

Page 138

LEA : 123467103 Souderton Area SD

Printed 11/30/2023 3:33:30 PM

General Fund (10)

4000 Facilities Acquisition, Construction and Improvement Services		<u>Total</u>
400 <u>Purchased Property Services</u>		
430	Repairs and Maintenance Services	2,668.00
450	Construction Services	74,777.00
Total Purchased Property Services		\$77,445.00
Total 4000 Facilities Acquisition, Construction and Improvement Services		\$77,445.00

LEA : 123467103 Souderton Area SD

Printed 11/30/2023 3:33:30 PM

General Fund (10)

4600 Existing Building Improvement Services	<u>Elementary</u>	<u>Secondary</u>	<u>Federal</u>	<u>Total</u>
400 <u>Purchased Property Services</u>				
430 Repairs and Maintenance Services				2,668.00
450 Construction Services				74,777.00
Total Purchased Property Services				\$77,445.00
Total 4600 Existing Building Improvement Services				\$77,445.00

LEA : 123467103 Souderton Area SD

Printed 11/30/2023 3:33:37 PM

General Fund (10)	
5000 Other Expenditures and Financing Uses	<u>Total</u>
800 <u>Other Objects</u>	
830 Interest	2,247,603.32
Total Other Objects	\$2,247,603.32
900 <u>Other Uses of Funds</u>	
910 Redemption of Principal	9,159,385.53
Total Other Uses of Funds	\$9,159,385.53
Total 5000 Other Expenditures and Financing Uses	\$11,406,988.85

LEA : 123467103 Souderton Area SD

Printed 11/30/2023 3:33:37 PM

General Fund (10)

5100 Debt Service / Other Expenditures and Financing Uses	<u>Elementary</u>	<u>Secondary</u>	<u>Federal</u>	<u>Total</u>
800 <u>Other Objects</u>				
830 Interest				2,247,603.32
Total Other Objects				\$2,247,603.32
900 <u>Other Uses of Funds</u>				
910 Redemption of Principal				9,159,385.53
Total Other Uses of Funds				\$9,159,385.53
Total 5100 Debt Service / Other Expenditures and Financing Uses				\$11,406,988.85

LEA : 123467103 Souderton Area SD

Printed 11/30/2023 3:33:37 PM

General Fund (10)

5110 Debt Service	<u>Elementary</u>	<u>Secondary</u>	<u>Federal</u>	<u>Total</u>
800 <u>Other Objects</u>				
830 Interest				2,247,474.71
Total Other Objects				\$2,247,474.71
900 <u>Other Uses of Funds</u>				
910 Redemption of Principal				9,070,000.00
Total Other Uses of Funds				\$9,070,000.00
Total 5110 Debt Service				\$11,317,474.71

LEA : 123467103 Souderton Area SD

Printed 11/30/2023 3:33:37 PM

General Fund (10)

5140 Leases and Other Right-to-Use Arrangements	<u>Elementary</u>	<u>Secondary</u>	<u>Federal</u>	<u>Total</u>
800 <u>Other Objects</u>				
830 Interest				128.61
Total Other Objects				\$128.61
900 <u>Other Uses of Funds</u>				
910 Redemption of Principal				89,385.53
Total Other Uses of Funds				\$89,385.53
Total 5140 Leases and Other Right-to-Use Arrangements				\$89,514.14

LEA : 123467103 Souderton Area SD

Printed 11/30/2023 3:33:23 PM

Other Capital Projects Fund (39)

2000 Support Services

Total

300	<u>Purchased Professional and Technical Services</u>	
330	Other Professional Services	195,709.10
Total Purchased Professional and Technical Services		\$195,709.10
400	<u>Purchased Property Services</u>	
430	Repairs and Maintenance Services	40,080.00
450	Construction Services	11,680.00
Total Purchased Property Services		\$51,760.00
500	<u>Other Purchased Services</u>	
523	General Property and Liability Insurance	28,108.00
550	Printing and Binding	1,200.00
Total Other Purchased Services		\$29,308.00
600	<u>Supplies</u>	
610	General Supplies	17,314.26
Total Supplies		\$17,314.26
700	<u>Property</u>	
752	Capital Equipment – Original and Additional	9,429.00
Total Property		\$9,429.00
Total 2000 Support Services		\$303,520.36

LEA : 123467103 Souderton Area SD

Printed 11/30/2023 3:33:23 PM

Other Capital Projects Fund (39)

2300 Support Services – Administration

Elementary Secondary Federal Total

300 Purchased Professional and Technical Services

330 Other Professional Services 195,709.10

Total Purchased Professional and Technical Services \$195,709.10

500 Other Purchased Services

550 Printing and Binding 1,200.00

Total Other Purchased Services \$1,200.00

Total 2300 Support Services – Administration \$196,909.10

LEA : 123467103 Souderton Area SD

Printed 11/30/2023 3:33:23 PM

Other Capital Projects Fund (39)

2390 Other Administration Services

Elementary Secondary Federal Total

300 Purchased Professional and Technical Services

330 Other Professional Services 195,709.10

Total Purchased Professional and Technical Services \$195,709.10

500 Other Purchased Services

550 Printing and Binding 1,200.00

Total Other Purchased Services \$1,200.00

Total 2390 Other Administration Services \$196,909.10

LEA : 123467103 Souderton Area SD

Printed 11/30/2023 3:33:23 PM

Other Capital Projects Fund (39)

2600 Operation and Maintenance of Plant Services	<u>Elementary</u>	<u>Secondary</u>	<u>Federal</u>	<u>Total</u>
400 <u>Purchased Property Services</u>				
430 Repairs and Maintenance Services				40,080.00
450 Construction Services				11,680.00
Total Purchased Property Services				\$51,760.00
500 <u>Other Purchased Services</u>				
523 General Property and Liability Insurance				28,108.00
Total Other Purchased Services				\$28,108.00
600 <u>Supplies</u>				
610 General Supplies	5,664.50	11,649.76		17,314.26
Total Supplies	\$5,664.50	\$11,649.76		\$17,314.26
700 <u>Property</u>				
752 Capital Equipment – Original and Additional				9,429.00
Total Property				\$9,429.00
Total 2600 Operation and Maintenance of Plant Services	\$5,664.50	\$11,649.76		\$106,611.26

LEA : 123467103 Souderton Area SD

Printed 11/30/2023 3:33:23 PM

Other Capital Projects Fund (39)

2620 Operation of Buildings Services	<u>Elementary</u>	<u>Secondary</u>	<u>Federal</u>	<u>Total</u>
400 <u>Purchased Property Services</u>				
430 Repairs and Maintenance Services				40,080.00
450 Construction Services				11,680.00
Total Purchased Property Services				\$51,760.00
600 <u>Supplies</u>				
610 General Supplies	5,664.50	11,649.76		17,314.26
Total Supplies	\$5,664.50	\$11,649.76		\$17,314.26
700 <u>Property</u>				
752 Capital Equipment – Original and Additional				9,429.00
Total Property				\$9,429.00
Total 2620 Operation of Buildings Services	\$5,664.50	\$11,649.76		\$78,503.26

LEA : 123467103 Souderton Area SD

Printed 11/30/2023 3:33:23 PM

Other Capital Projects Fund (39)

2690 Other Operation and Maintenance of Plant Services

<u>Elementary</u>	<u>Secondary</u>	<u>Federal</u>	<u>Total</u>
-------------------	------------------	----------------	--------------

500 Other Purchased Services

523 General Property and Liability Insurance			28,108.00
--	--	--	-----------

Total Other Purchased Services			\$28,108.00
---------------------------------------	--	--	--------------------

Total 2690 Other Operation and Maintenance of Plant Services			\$28,108.00
---	--	--	--------------------

LEA : 123467103 Souderton Area SD

Printed 11/30/2023 3:33:33 PM

Other Capital Projects Fund (39)

4000 Facilities Acquisition, Construction and Improvement Services

Total

300 Purchased Professional and Technical Services

330 Other Professional Services	239,503.22
390 Other Purchased Professional and Technical Services	8,380.00

Total Purchased Professional and Technical Services	\$247,883.22
--	---------------------

400 Purchased Property Services

450 Construction Services	22,920,793.66
490 Other Purchased Property Services	175,942.00

Total Purchased Property Services	\$23,096,735.66
--	------------------------

500 Other Purchased Services

549 Other Advertising/Public Relations	1,241.36
--	----------

Total Other Purchased Services	\$1,241.36
---------------------------------------	-------------------

700 Property

752 Capital Equipment – Original and Additional	12,753.74
762 Capitalized Equipment - Replacement	45,000.00

Total Property	\$57,753.74
-----------------------	--------------------

Total 4000 Facilities Acquisition, Construction and Improvement Services	\$23,403,613.98
---	------------------------

LEA : 123467103 Souderton Area SD

Printed 11/30/2023 3:33:33 PM

Other Capital Projects Fund (39)

4200 Existing Site Improvement Services	<u>Elementary</u>	<u>Secondary</u>	<u>Federal</u>	<u>Total</u>
400 <u>Purchased Property Services</u>				
450 Construction Services				12,946.50
Total Purchased Property Services				\$12,946.50
700 <u>Property</u>				
752 Capital Equipment – Original and Additional				5,588.74
Total Property				\$5,588.74
Total 4200 Existing Site Improvement Services				\$18,535.24

LEA : 123467103 Souderton Area SD

Printed 11/30/2023 3:33:33 PM

Other Capital Projects Fund (39)

4300 Architecture and Engineering Services / Educational Specifications Development – Original and Additional	<u>Elementary</u>	<u>Secondary</u>	<u>Federal</u>	<u>Total</u>
300 <u>Purchased Professional and Technical Services</u>				
330 Other Professional Services				10,540.00
Total Purchased Professional and Technical Services				\$10,540.00
Total 4300 Architecture and Engineering Services / Educational Specifications Development – Original and Additional				\$10,540.00

LEA : 123467103 Souderton Area SD

Printed 11/30/2023 3:33:33 PM

Other Capital Projects Fund (39)

4400 Architecture and Engineering Services / Educational Specifications – Improvements	<u>Elementary</u>	<u>Secondary</u>	<u>Federal</u>	<u>Total</u>
300 <u>Purchased Professional and Technical Services</u>				
330 Other Professional Services				228,863.22
390 Other Purchased Professional and Technical Services				8,380.00
Total Purchased Professional and Technical Services				\$237,243.22
500 <u>Other Purchased Services</u>				
549 Other Advertising/Public Relations				1,241.36
Total Other Purchased Services				\$1,241.36
Total 4400 Architecture and Engineering Services / Educational Specifications – Improvements				\$238,484.58

LEA : 123467103 Souderton Area SD

Printed 11/30/2023 3:33:33 PM

Other Capital Projects Fund (39)

4600 Existing Building Improvement Services	<u>Elementary</u>	<u>Secondary</u>	<u>Federal</u>	<u>Total</u>
300 <u>Purchased Professional and Technical Services</u>				
330 Other Professional Services				100.00
Total Purchased Professional and Technical Services				\$100.00
400 <u>Purchased Property Services</u>				
450 Construction Services				22,907,847.16
490 Other Purchased Property Services				175,942.00
Total Purchased Property Services				\$23,083,789.16
700 <u>Property</u>				
752 Capital Equipment – Original and Additional				7,165.00
762 Capitalized Equipment - Replacement				45,000.00
Total Property				\$52,165.00
Total 4600 Existing Building Improvement Services				\$23,136,054.16

LEA : 123467103 Souderton Area SD

Printed 11/30/2023 3:33:42 PM

	<u>General Fund(10)</u>	<u>Student Sponsored Activity Fund(21)</u>	<u>Public Purpose Trust(27)</u>	<u>Other Compt Approved (28)</u>	<u>Athletic / Activity(29)</u>
1000 <u>Instruction</u>					
1100 Regular Programs - Elementary / Secondary	57,727,722.52				
1200 Special Programs - Elementary / Secondary	30,499,127.17				
1300 Vocational Education	1,735,101.09				
1400 Other Instructional Programs - Elementary / Secondary	772,126.55				
1500 Nonpublic School Programs	9,766.00				
1600 Adult Education Programs	136,726.23				
Total Instruction	\$90,880,569.56				
2000 <u>Support Services</u>					
2100 Support Services - Students	5,811,314.48				
2200 Support Services - Instructional Staff	5,081,454.88				
2300 Support Services - Administration	5,914,743.74				
2400 Support Services - Pupil Health	1,625,964.54				
2500 Support Services - Business	1,021,883.02				
2600 Operation and Maintenance of Plant Services	10,500,520.50				
2700 Student Transportation Services	8,564,133.06				
2800 Support Services - Central	3,338,937.85				
2900 Other Support Services	80,676.75				
Total Support Services	\$41,939,628.82				
3000 <u>Operation of Non-Instructional Services</u>					
3200 Student Activities	1,866,374.61				
3400 Scholarships and Awards	35,150.00				
Total Operation of Non-Instructional Services	\$1,901,524.61				
4000 <u>Facilities Acquisition, Construction and Improvement Services</u>					
4200 Existing Site Improvement Services					
4300 Architecture and Engineering Services / Educational Specifications Development - Original and Additional					
4400 Architecture and Engineering Services / Educational Specifications - Improvements					
4600 Existing Building Improvement Services	77,445.00				
Total Facilities Acquisition, Construction and Improvement Services	\$77,445.00				
5000 <u>Other Expenditures and Financing Uses</u>					
5100 Debt Service / Other Expenditures and Financing Uses	11,406,988.85				
Total Other Expenditures and Financing Uses	\$11,406,988.85				
TOTAL ACTUAL EXPENDITURES & OTHER FINANCING USES	\$146,206,156.84				

LEA : 123467103 Souderton Area SD

Printed 11/30/2023 3:33:42 PM

	<u>Capital Reserve (690.</u>	<u>Capital Reserve (1431)(32)</u>	<u>Other Capital Projects</u>	<u>Debt Service(40)</u>	<u>Permanent(90)</u>
	<u>1850)(31)</u>		<u>Fund(39)</u>		
1000 <u>Instruction</u>					
1100 Regular Programs - Elementary / Secondary					
1200 Special Programs - Elementary / Secondary					
1300 Vocational Education					
1400 Other Instructional Programs - Elementary / Secondary					
1500 Nonpublic School Programs					
1600 Adult Education Programs					
Total Instruction					
2000 <u>Support Services</u>					
2100 Support Services - Students					
2200 Support Services - Instructional Staff					
2300 Support Services - Administration			196,909.10		
2400 Support Services - Pupil Health					
2500 Support Services - Business					
2600 Operation and Maintenance of Plant Services			106,611.26		
2700 Student Transportation Services					
2800 Support Services - Central					
2900 Other Support Services					
Total Support Services			\$303,520.36		
3000 <u>Operation of Non-Instructional Services</u>					
3200 Student Activities					
3400 Scholarships and Awards					
Total Operation of Non-Instructional Services					
4000 <u>Facilities Acquisition, Construction and Improvement Services</u>					
4200 Existing Site Improvement Services			18,535.24		
4300 Architecture and Engineering Services / Educational Specifications Development - Original and Additional			10,540.00		
4400 Architecture and Engineering Services / Educational Specifications - Improvements			238,484.58		
4600 Existing Building Improvement Services			23,136,054.16		
Total Facilities Acquisition, Construction and Improvement Services			\$23,403,613.98		
5000 <u>Other Expenditures and Financing Uses</u>					
5100 Debt Service / Other Expenditures and Financing Uses					
Total Other Expenditures and Financing Uses					
TOTAL ACTUAL EXPENDITURES & OTHER FINANCING USES			\$23,707,134.34		

LEA : 123467103 Souderton Area SD

Printed 11/30/2023 3:33:42 PM

	<u>Total</u>
1000 <u>Instruction</u>	
1100 Regular Programs - Elementary / Secondary	57,727,722.52
1200 Special Programs - Elementary / Secondary	30,499,127.17
1300 Vocational Education	1,735,101.09
1400 Other Instructional Programs - Elementary / Secondary	772,126.55
1500 Nonpublic School Programs	9,766.00
1600 Adult Education Programs	136,726.23
Total Instruction	\$90,880,569.56
2000 <u>Support Services</u>	
2100 Support Services - Students	5,811,314.48
2200 Support Services - Instructional Staff	5,081,454.88
2300 Support Services - Administration	6,111,652.84
2400 Support Services - Pupil Health	1,625,964.54
2500 Support Services - Business	1,021,883.02
2600 Operation and Maintenance of Plant Services	10,607,131.76
2700 Student Transportation Services	8,564,133.06
2800 Support Services - Central	3,338,937.85
2900 Other Support Services	80,676.75
Total Support Services	\$42,243,149.18
3000 <u>Operation of Non-Instructional Services</u>	
3200 Student Activities	1,866,374.61
3400 Scholarships and Awards	35,150.00
Total Operation of Non-Instructional Services	\$1,901,524.61
4000 <u>Facilities Acquisition, Construction and Improvement Services</u>	
4200 Existing Site Improvement Services	18,535.24
4300 Architecture and Engineering Services / Educational Specifications Development - Original and Additional	10,540.00
4400 Architecture and Engineering Services / Educational Specifications - Improvements	238,484.58
4600 Existing Building Improvement Services	23,213,499.16
Total Facilities Acquisition, Construction and Improvement Services	\$23,481,058.98
5000 <u>Other Expenditures and Financing Uses</u>	
5100 Debt Service / Other Expenditures and Financing Uses	11,406,988.85
Total Other Expenditures and Financing Uses	\$11,406,988.85
TOTAL ACTUAL EXPENDITURES & OTHER FINANCING USES	\$169,913,291.18

LEA : 123467103 Souderton Area SD

Printed 11/30/2023 3:33:56 PM

PSERS Salary Data (Salary Data should relate to the General Fund only)

Amount	Description	Amount
	Total Salary Base for salaries subject to PSERS withholding	56,900,106.88
	Total Federally Funded salaries subject to PSERS withholding	1,944,273.01

Title I Expenditure Data

Amount	Description	Amount
	Expenditures Funded with Current Title I Funds	265,820.61
	Expenditures Funded with Carry over Title I Funds	
Total	Title I Expenditure Data	\$265,820.61

Title IV Revenue Data

Amount	Description	Amount
	Revenue from Title IV-A-1: Student Support and Academic Enrichment Grants	34,247.00
	Revenue from Title IV-B: 21st Century Community Learning Centers	

Title V Revenue Data

Amount	Description	Amount
	Revenue from Title V-B-2: Rural and Low-Income School Programs	
	Revenue from Title V-B-1: Small Rural School Achievement (Directly from the Federal Govt)	

LEA : 123467103 Souderton Area SD

1 .	<u>Current Special Education Expenditures within Function 1000</u> See list of exclusions in the note below.	24,426,016.92
2 .	<u>Current Special Education Expenditures within Function 2000</u> See list of exclusions in the note below.	270,001.68
2A.	<u>Current Special Education Expenditures within Sub-Function 2100</u> This data should also be included in line 2 above. See list of exclusions in the note below.	
2B.	<u>Current Special Education Expenditures within Sub-Function 2200</u> This data should also be included in line 2 above. See list of exclusions in the note below.	300.00
2C.	<u>Current Special Education Expenditures within Sub-Function 2700</u> This data should also be included in line 2 above. See list of exclusions in the note below.	
3.	<u>Current Special Education Expenditures within Sub-Function 3100</u> See list of exclusions in the note below.	
4.	<u>Current Special Education Expenditures within Sub-Function 3200</u> See list of exclusions in the note below.	

Note: The Current Special Education Expenditure amounts for each line should be calculated as follows:

- * Include the total expenditures for special education costs from all governmental funds and the food service fund 51 for the function/sub-function requested
- * Exclude data from sub-functions: 1243,1450,1500,1600,1807,2280,2450,2750,2990
- * Exclude data from objects: 322,511,512,516,561,562,564,566,592,593,594,595,596,597,700,830,899

Benefits for Staff Relative to Collective Bargaining Agreements

	OBJECT	COVERED	NOT COVERED	TOTAL
10 General Fund				
	211 Medical Insurance			
	212 Dental Insurance			
	215 Eye Care Insurance			
	216 Prescription Insurance			
	271 Self-Insurance Medical Benefits	9,011,835.13	1,183,987.95	10,195,823.08
	272 Self-Insurance Dental Benefits	551,248.32	81,728.10	632,976.42
	275 Self-Insurance Eye Care Benefits	96,421.40	13,082.93	109,504.33
	276 Self-Insurance Prescription Benefits			
	FUND TOTAL	\$9,659,504.85	\$1,278,798.98	\$10,938,303.83
50 Enterprise Fund				
	211 Medical Insurance			
	212 Dental Insurance			
	215 Eye Care Insurance			
	216 Prescription Insurance			
	271 Self-Insurance Medical Benefits	17,271.60	134,447.98	151,719.58
	272 Self-Insurance Dental Benefits	1,045.32	7,299.32	8,344.64
	275 Self-Insurance Eye Care Benefits	195.72	1,250.07	1,445.79
	276 Self-Insurance Prescription Benefits			
	FUND TOTAL	\$18,512.64	\$142,997.37	\$161,510.01
60 Internal Service Fund	No Self Insurance data to report			
	211 Medical Insurance			
	212 Dental Insurance			
	215 Eye Care Insurance			
	216 Prescription Insurance			
	271 Self-Insurance Medical Benefits			
	272 Self-Insurance Dental Benefits			
	275 Self-Insurance Eye Care Benefits			
	276 Self-Insurance Prescription Benefits			
	FUND TOTAL			
Total of All Funds		\$9,678,017.49	\$1,421,796.35	\$11,099,813.84

LEA : 123467103 Souderton Area SD

Printed 11/30/2023 3:34:05 PM

Function	Special Education (Prior Year)	Nonspecial Education (Prior Year)	Total (Prior Year)	Special Education (Current Year)	Nonspecial Education (Current Year)	Total (Current Year)
2120 Guidance Services	452,356.69	2,012,802.40	2,465,159.09	490,282.10	2,107,927.23	2,598,209.33
2140 Psychological Services	246,801.36	1,098,165.16	1,344,966.52	266,160.12	1,144,333.37	1,410,493.49
2150 Speech Pathology and Audiology Services						
2160 Social Work Services	255,884.51	255,884.50	511,769.01	282,778.19	282,778.19	565,556.38
2260 Instruction and Curriculum Development Services	219,033.95	974,611.55	1,193,645.50	280,185.24	1,204,633.20	1,484,818.44
2350 Legal and Accounting Services	24,507.13	109,046.73	133,553.86	26,988.45	116,034.62	143,023.07
2420 Medical Services		298,841.27	298,841.27		288,856.14	288,856.14
2440 Nursing Services	235,333.65	1,047,138.58	1,282,472.23	251,336.32	1,080,599.65	1,331,935.97
2700 Student Transportation Services	3,130,809.72	5,011,519.52	8,142,329.24	3,546,029.98	5,018,103.08	8,564,133.06
Total	\$4,564,727.01	\$10,808,009.71	\$15,372,736.72	\$5,143,760.40	\$11,243,265.48	\$16,387,025.88

LEA : 123467103 Souderton Area SD

Printed 11/30/2023 3:34:10 PM

(PRINCIPAL AMOUNTS ONLY)

GOVERNMENTAL FUNDS/ ACTIVITIES

	Short-Term Borrowing	General Obligation Bonds/Notes	Authority Building Obligations	Leases, Other Right to Use Arrangements	Extended Term Financing Agreements	Other Long Term Debt/Liabilities	OPEB, Comp Abs, Net Pension Liab	Total
1. Debt at Beginning of Fiscal Year		68,580,000.00		39,473.00			177,479,479.00	246,098,952.00
2. Additional Debt Incurred During Year		9,865,000.00		167,264.00			9,285,646.00	19,317,910.00
3. Retirements and Repayments		9,070,000.00		89,386.00			3,519,777.00	12,679,163.00
4. Debt at End of Fiscal Year		69,375,000.00		117,351.00			183,245,348.00	252,737,699.00
5. Accreted Interest at End Of Fiscal Year								
6. Total Debt and Accreted Interest		69,375,000.00		117,351.00			183,245,348.00	252,737,699.00
7. Current Portion P&I - Due within 1 year		11,945,451.00		62,042.00			221,659.00	12,229,152.00
8. Interest Paid during current fiscal year		2,247,474.71						2,247,474.71

(PRINCIPAL AMOUNTS ONLY)

PROPRIETARY FUNDS

	Short-Term Borrowing	General Obligation Bonds/Notes	Authority Building Obligations	Leases, Other Right to Use Arrangements	Extended Term Financing Agreements	Other Long Term Debt/Liabilities	OPEB, Comp Abs, Net Pension Liab	Total
1. Debt at Beginning of Fiscal Year							2,901,777.00	2,901,777.00
2. Additional Debt Incurred During Year							88,219.00	88,219.00
3. Retirements and Repayments							27,683.00	27,683.00
4. Debt at End of Fiscal Year							2,962,313.00	2,962,313.00
5. Accreted Interest at End Of Fiscal Year								
6. Total Debt and Accreted Interest							2,962,313.00	2,962,313.00
7. Current Portion P&I - Due within 1 year								
8. Interest Paid during current fiscal year								

LEA : 123467103 Souderton Area SD

Total Principal and Interest Payments Made by Your School - All Funds

Function	Fund		Principal (910)	Principal (920)	Interest (830)	Total (Principal +Interest)	Misc Other Uses (990)
5110	10	General Fund	9,070,000.00		2,247,474.71	11,317,474.71	
5110	20	Special Revenue Funds					
5110	30	Capital Projects Funds					
5110	40	Debt Service Fund					
5110	90	Permanent Fund					
5120	10	General Fund					
5120	20	Special Revenue Funds					
5120	30	Capital Projects Funds					
5120	40	Debt Service Fund					
5140	10	General Fund	89,385.53		128.61	89,514.14	
5140	20	Special Revenue Funds					
5140	30	Capital Projects Funds					
5140	40	Debt Service Fund					
5140	90	Permanent Fund					
Total Debt Payments - Governmental Funds			\$9,159,385.53		\$2,247,603.32	\$11,406,988.85	

Function	Fund		Principal (910)	Principal (920)	Interest (830)	Total (Principal +Interest)
5110	50	Enterprise Fund				
5110	60	Internal Service Fund				
5120	50	Enterprise Fund				
5120	60	Internal Service Fund				
5140	50	Enterprise Fund				
5140	60	Internal Service Fund				

Total Debt Payments - Proprietary Funds						
---	--	--	--	--	--	--

LEA : 123467103 Souderton Area SD

Printed 11/30/2023 3:34:10 PM

Debt Details
Governmental Funds/ Activities

Debt Category	Debt Issue Date (MM/YYYY)	Principal Amounts Only				Current Portion Due Within One Year (Principal and Interest)	Interest Paid During Fiscal Year
		Debt at Beginning of Fiscal Year	Additions	Reductions / Repayments	Debt at End of Fiscal Year		
General Obligation Bonds/Notes – CIB	01/2023		9,865,000.00		9,865,000.00	380,282.00	
General Obligation Bonds/Notes – CIB	06/2022	33,100,000.00			33,100,000.00	1,474,675.00	1,041,108.32
General Obligation Bonds/Notes – CIB	07/2021	8,910,000.00		5,000.00	8,905,000.00	303,000.00	298,100.00
General Obligation Bonds/Notes – CIB	11/2019	8,210,000.00		10,000.00	8,200,000.00	4,275,625.00	410,000.00
General Obligation Bonds/Notes – CIB	01/2017	11,070,000.00		3,425,000.00	7,645,000.00	3,833,375.00	401,550.00
General Obligation Bonds/Notes – CIB	01/2015	1,430,000.00		705,000.00	725,000.00	732,975.00	23,352.50
General Obligation Bonds/Notes – CIB	01/2014	5,860,000.00		4,925,000.00	935,000.00	945,519.00	73,363.89
Leases and Other Right to Use Arrangements		39,473.00	167,264.00	89,386.00	117,351.00	62,042.00	
Net Pension Liability		159,779,814.00	9,249,629.00		169,029,443.00		
Other Post-Employment Benefits (OPEB)		14,834,733.00		3,503,521.00	11,331,212.00		
Compensated Absences		2,864,932.00	36,017.00	16,256.00	2,884,693.00	221,659.00	
Totals for Debt Entered:		\$246,098,952.00	\$19,317,910.00	\$12,679,163.00	\$252,737,699.00	\$12,229,152.00	\$2,247,474.71

Bond Details
Proprietary Funds

Debt Category	Debt Issue Date (MM/YYYY)	Principal Amounts Only				Current Portion Due Within One Year (Principal and Interest)	Interest Paid During Fiscal Year
		Debt at Beginning of Fiscal Year	Additions	Reductions / Repayments	Debt at End of Fiscal Year		
Net Pension Liability		2,737,041.00	88,219.00		2,825,260.00		
Other Post-Employment Benefits (OPEB)		164,736.00		27,683.00	137,053.00		
Totals for Debt Entered:		\$2,901,777.00	\$88,219.00	\$27,683.00	\$2,962,313.00		

LEA : 123467103 Souderton Area SD

General Fund (10)

Section 1: Tuition/Purchased Services as Reported within Expenditure Detail	Amount
Tuition Reported in General Fund Expenditures 1000-560	11,093,307.48
Purchased Services in General Fund Expenditures 1000-594 and 1000-597	1,162.78
Section 1 Total	\$11,094,470.26

Section 2: Tuition Paid to Institution Types During Fiscal Year	Tuition Paid For Nonspecial Education	Tuition Paid For Special Education	Total
1 1306 Institutions			
2 Institutionalized Children's Programs		1,162.78	1,162.78
3 Juveniles Incarcerated in Adult Facilities			
4 Residential Treatment Facilities			
5 Other Local Education Agencies	180,893.50	41,386.34	222,279.84
6 Brick and Mortar Charter Schools	1,860,573.97	1,403,932.99	3,264,506.96
7 Cyber Charter Schools	737,729.18	563,893.17	1,301,622.35
8 Career and Technology Centers	1,735,101.09		1,735,101.09
9 Approved Private Schools		351,282.57	351,282.57
10 PA Chartered Schools for the Deaf and Blind			
11 Private Residential Rehabilitative Institutions	243,061.56	1,529,929.65	1,772,991.21
12 Juvenile Detention Centers			
13 Special Program Jointures			
14 Other Tuition Not Included Elsewhere In This Section	14,874.00	2,430,649.46	2,445,523.46
Section 2 Total	\$4,772,233.30	\$6,322,236.96	\$11,094,470.26

LEA : 123467103 Souderton Area SD

Printed 11/30/2023 3:34:16 PM

Food Service / Cafeteria Operations Fund (51)

3000 Operation of Non-Instructional Services

Total

100	<u>Personnel Services – Salaries</u>	
100	Personnel Services – Salaries	537,365.38
Total Personnel Services – Salaries		\$537,365.38
200	<u>Personnel Services – Employee Benefits</u>	
220	Social Security Contributions	38,830.20
230	PSERS Retirement Contributions	114,206.54
250	Unemployment Compensation	193.28
260	Workers' Compensation	2,903.02
270	Group Insurance – Self-Insurance	161,510.01
280	Other Post-Employment Benefits (OPEB)	5,771.00
Total Personnel Services – Employee Benefits		\$323,414.05
300	<u>Purchased Professional and Technical Services</u>	
340	Technical Services	8,749.00
Total Purchased Professional and Technical Services		\$8,749.00
400	<u>Purchased Property Services</u>	
430	Repairs and Maintenance Services	98,667.63
Total Purchased Property Services		\$98,667.63
500	<u>Other Purchased Services</u>	
530	Communications	2,860.75
570	Food Service Management	1,424,807.47
580	Travel	679.95
Total Other Purchased Services		\$1,428,348.17
600	<u>Supplies</u>	
610	General Supplies	25,252.12
630	Food	305,622.35
Total Supplies		\$330,874.47
700	<u>Property</u>	
740	Depreciation	60,364.25
Total Property		\$60,364.25
800	<u>Other Objects</u>	
810	Dues and Fees	1,817.08
Total Other Objects		\$1,817.08
Total 3000 Operation of Non-Instructional Services		\$2,789,600.03

LEA : 123467103 Souderton Area SD

Printed 11/30/2023 3:34:16 PM

Food Service / Cafeteria Operations Fund (51)

3100 Food Services	Elementary	Secondary	Federal	Total
100 <u>Personnel Services – Salaries</u>				
100 Personnel Services – Salaries				537,365.38
Total Personnel Services – Salaries				\$537,365.38
200 <u>Personnel Services – Employee Benefits</u>				
220 Social Security Contributions				38,830.20
230 PSERS Retirement Contributions				114,206.54
250 Unemployment Compensation				193.28
260 Workers' Compensation				2,903.02
270 Group Insurance – Self-Insurance				161,510.01
280 Other Post-Employment Benefits (OPEB)				5,771.00
Total Personnel Services – Employee Benefits				\$323,414.05
300 <u>Purchased Professional and Technical Services</u>				
340 Technical Services				8,749.00
Total Purchased Professional and Technical Services				\$8,749.00
400 <u>Purchased Property Services</u>				
430 Repairs and Maintenance Services				98,667.63
Total Purchased Property Services				\$98,667.63
500 <u>Other Purchased Services</u>				
530 Communications				2,860.75
570 Food Service Management				1,424,807.47
580 Travel				679.95
Total Other Purchased Services				\$1,428,348.17
600 <u>Supplies</u>				
610 General Supplies				25,252.12
630 Food				305,622.35
Total Supplies				\$330,874.47
700 <u>Property</u>				
740 Depreciation				60,364.25
Total Property				\$60,364.25
800 <u>Other Objects</u>				
810 Dues and Fees				1,817.08
Total Other Objects				\$1,817.08
Total 3100 Food Services				\$2,789,600.03

LEA : 123467103 Souderton Area SD

Printed 11/30/2023 3:34:20 PM

Internal Service Fund (60)

3000 Operation of Non-Instructional Services		<u>Total</u>
200 <u>Personnel Services – Employee Benefits</u>		
270 Group Insurance – Self-Insurance	13,490,595.54	
Total Personnel Services – Employee Benefits	\$13,490,595.54	
500 <u>Other Purchased Services</u>		
520 Insurance – General	1,104,726.93	
Total Other Purchased Services	\$1,104,726.93	
800 <u>Other Objects</u>		
810 Dues and Fees	465,981.34	
Total Other Objects	\$465,981.34	
Total 3000 Operation of Non-Instructional Services	\$15,061,303.81	

LEA : 123467103 Souderton Area SD

Printed 11/30/2023 3:34:20 PM

Internal Service Fund (60)

3100 Food Services	<u>Elementary</u>	<u>Secondary</u>	<u>Federal</u>	<u>Total</u>
200 <u>Personnel Services – Employee Benefits</u>				
270 Group Insurance – Self-Insurance				13,490,595.54
Total Personnel Services – Employee Benefits				\$13,490,595.54
500 <u>Other Purchased Services</u>				
520 Insurance – General				1,104,726.93
Total Other Purchased Services				\$1,104,726.93
800 <u>Other Objects</u>				
810 Dues and Fees				465,981.34
Total Other Objects				\$465,981.34
Total 3100 Food Services				\$15,061,303.81

	<u>Food Service(51)</u>	<u>Child Care Operations(52)</u>	<u>Other Enterprise(58)</u>	<u>Internal Service(60)</u>	<u>Total</u>
3000 <u>Operation of Non-Instructional Services</u>					
3100 Food Services	2,789,600.03			15,061,303.81	17,850,903.84
Total Operation of Non-Instructional Services	\$2,789,600.03			\$15,061,303.81	\$17,850,903.84
TOTAL ACTUAL EXPENDITURES & OTHER FINANCING USES	\$2,789,600.03			\$15,061,303.81	\$17,850,903.84

LEA : 123467103 Souderton Area SD

Printed 11/30/2023 3:34:34 PM

Fund	School	School Number	Local Personnel	Local Nonpersonnel	State Personnel	State Nonpersonnel	Federal Personnel	Federal Nonpersonnel	Total	Explanation
10										
	E M Crouthamel El Sch	3357	5,869,734.00	2,740,372.04	11,074.81	19,015.97	249,115.13	52,731.13	8,942,043.08	
	Franconia El Sch	3266	6,665,153.71	3,242,966.25	12,909.88	22,166.87	236,415.11	61,468.56	10,241,080.38	
	Indian Crest MS	8062	11,043,646.18	5,395,154.96	20,153.58	34,604.64	215,945.25	95,958.40	16,805,463.01	
	Indian Valley MS	4722	10,746,019.89	5,964,686.43	24,081.27	41,348.68	258,030.43	114,659.55	17,148,826.25	
	Oak Ridge El Sch	7262	6,899,065.95	3,264,632.35	13,135.24	22,553.83	140,743.87	62,541.58	10,402,672.82	
	Salford Hills El Sch	8282	6,962,292.48	3,609,355.91	14,165.45	24,322.75	151,782.60	67,446.80	10,829,365.99	
	Souderton Area HS	3354	30,470,153.58	17,938,999.02	69,024.39	118,518.14	739,595.23	328,649.85	49,664,940.21	
	Vernfield El Sch	7752	7,486,065.23	4,198,379.49	16,451.24	28,247.56	176,274.80	78,330.26	11,983,748.58	
	West Broad Street El Sch	4900	6,783,953.25	3,048,211.94	12,266.00	21,061.29	264,121.25	58,402.79	10,188,016.52	
Total			92,926,084.27	49,402,758.39	193,261.86	331,839.73	2,432,023.67	920,188.92	146,206,156.84	