
Mt. Olive Residency Investigations and Bus Safety Program



Agenda

- Residency Investigations
 - 2021-22, 2022-23, 2023-24
- Bus Safety Program
 - Video Demonstration
 - 2022-23, 2023-24
- Community Safety Initiatives
- Vape Incidents
 - 2023-24



Residency Investigations

Grade Level	2021/2022		2022/2023		2023/2024 *	
	Children	Tuition	Children	Tuition	Children	Tuition
PK - 5	5	\$87,947.00	9	\$174,835.00	13	\$437,802.00
6-8	7	\$131,550.00	3	\$54,414.00	1	\$25,929.00
9-12	4	\$282,205.00	7	\$132,611.00	2	\$43,230.00
TOTAL	16	\$501,702.00	19	\$361,860.00	16	\$506,961.00

Note: 2C: 28-7A - Tampering with public records or information

**as of November 2023*



SOURCE: DALLAS COUNTY SCHOOLS

abc **11**

2022-2023 Bus Tickets			
Month	Tickets Issued	Cases Heard and Found Guilty	Total Fines
September	188	50	\$14,880.00
October	173	56	\$13,440.00
November	185	154	\$37,260.00
December	150	124	\$29,760.00
January	151	134	\$32,160.00
February	123	97	\$23,280.00
March	165	157	\$37,680.00
April	99	139	\$34,760.00
May	165	135	\$32,400.00
June	96	133	\$32,120.00
Total For School Year	1495	1179	\$287,740.00
July	24	126	\$30,740.00
August	25	158	\$38,320.00
Total	1544	1463	\$356,800.00

2023-2024 Bus Tickets

Month	Tickets Issued	Cases Heard and Found Guilty	Total Fines
September	144	121	\$30,040.00
October	139	120	\$28,800.00
November (1-27)	81	29	\$7,160.00
Total To Date	364	270	\$66,000.00

02/13/2023 16:46:37

CH5

96

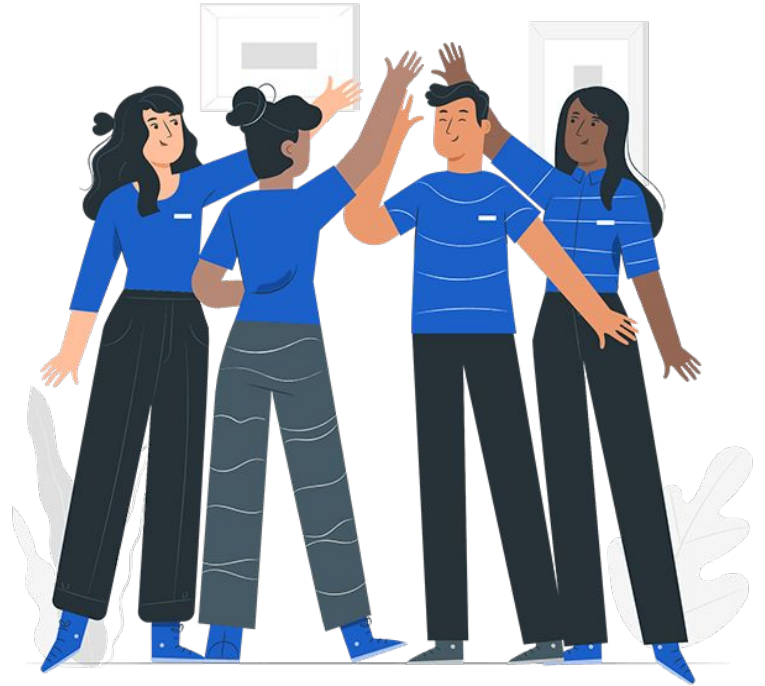
Alarm: RT

TJ D W



Community Safety Initiatives

- Providing bus routes to MOPD
- Billboards
- Newsletter
- Newspaper
- Electronic road sign
- Social Media (Facebook)



Keep Our Kids Safe



STOP
or get
Bus-ted...
School Bus Cameras are Here

CAMERA
TICKET

\$\$\$



OUTFRONT

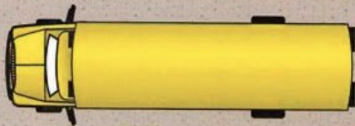
7121



AN EQUATION FOR SAFETY



**SCHOOL BUS + FLASHING RED LIGHT
= STOP**



You might think that if you do not see school students, driving by a stopped school bus and ignoring its flashing red lights is okay. It is not okay.

In fact, it's illegal. And it could turn deadly.

Nationally, over the past 32 years, **414 students have been killed** while in the process of being picked up or dropped off by a school bus. This translates into almost 13 deaths each year over the last three decades.

Those motorists either did not know what flashing red lights meant or disregarded them. These drivers caused hundreds of deaths that could have easily been prevented.

To prevent more deaths like these, learn the law and obey it.



For additional information, please visit:

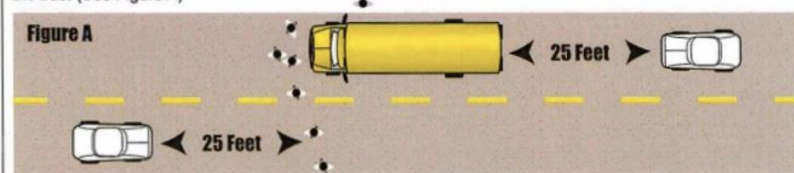
www.state.nj.us/education/finance/transportation
www.state.nj.us/transportation
www.njmvc.gov

or email:

student.trans@doe.state.nj.us
nj.safety@fhwa.dot.gov

The Law – Passing Stopped School Buses (39:4-128.1)

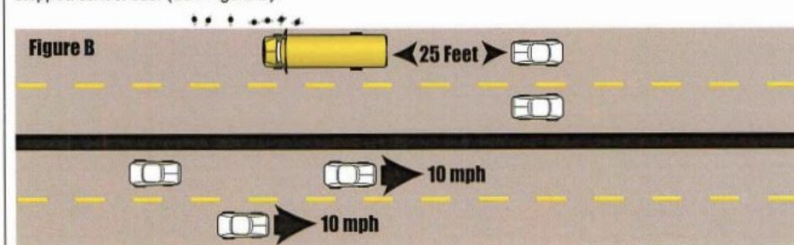
1) On a two-lane highway, or other road not divided by some type of physical barrier, stop at least 25 feet from a stopped school bus with flashing red lights whether or not you are traveling in the same direction as the bus. (See Figure A)



2) Stop at least 25 feet from a stopped school bus with flashing red lights if you are on a divided highway and on the same side of the highway as the school bus. (See Figure B)

Remain stopped until all students are safely on the bus or on the side of the highway, and until the bus's flashing red lights have been turned off.

3) Vehicles approaching a stopped school bus – but from the opposite side of a divided highway – that is picking up or letting off students may pass at 10 mph or less and must remain at that speed until completely past the stopped school bus. (See Figure B)



4) Travel no faster than 10 mph by a stopped school bus that is picking up or letting off students directly at a school (or day camp or any school-related activity) located on the same side of the highway where the school bus is stopped.

Note: School bus drivers are required to use flashing red lights when their bus is stopped to pick up or drop off students, and until every student is safely on the bus or clear of the bus and highway.

Fines & Points

A violation of these laws results in a \$100 fine, and up to 15 days in jail or up to 15 days community service for a first offense. For subsequent offenses, violators can receive a \$250 fine or more and up to 15 days in jail. Five points are added to a driver's record for each offense.

Mount Olive Chronicle

mtolivechronicle.com

THURSDAY, OCTOBER 19, 2023

\$2.00

Mount Olive girls soccer
loses to Hanover Park • 9



Budd Lake man charged
with resisting arrest • 5



Now & Then
• Special Section Inside



Email or phone

Password

Log In

Forgot Account?



Mount Olive Township

4.2K likes • 4.7K followers

Posts

About

Photos

Videos



Email or phone

Password

Log In

Forgot Account?



MOUNT OLIVE

POLICE DEPARTMENT



Mount Olive Police

10K followers • 24 following

Posts

About

Photos

Videos



2023-2024 Vape Tickets

Month	Tickets Issued	Cases Heard and Found Guilty	Total Fines
September	3	0	0
October	10	8	\$2,240.00
November (1-27)	7	6	\$1,440.00
Total To Date	20	14	\$3,680.00

Questions?
