

**GENERAL NOTES**

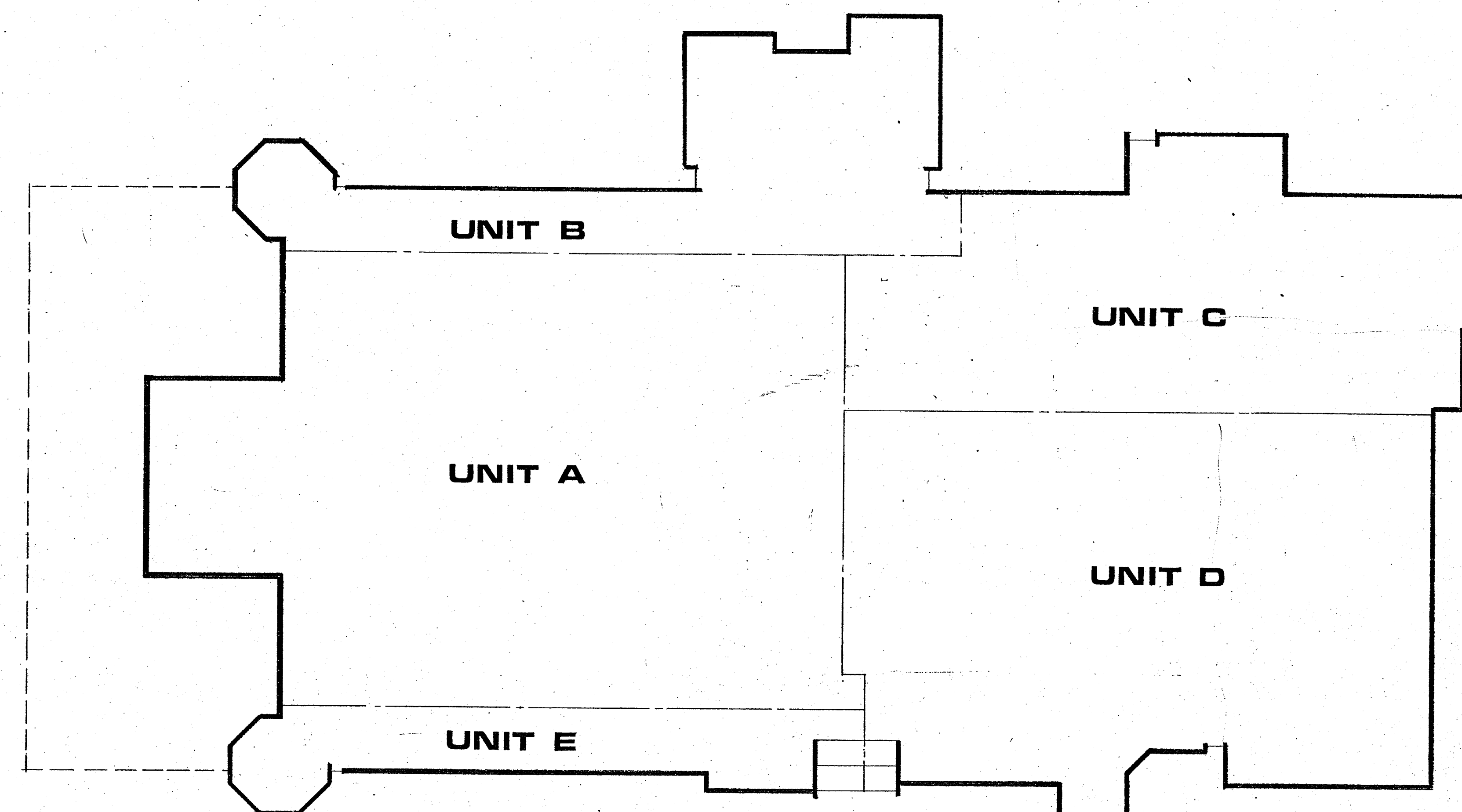
1. ALL 4FT x 2FT LIGHT TROFFERS TO HAVE 5" FLEXIBLE DUCT CONNS. NOMINAL CFM: 100 PER FIXTURE.
2. ALL 2FT x 2FT LIGHT TROFFERS TO HAVE 4" FLEXIBLE DUCT CONNS. NOMINAL CFM: 50 PER FIXTURE.
3. SEE DETAILS OF LIGHT TROFFERS & DOWNIES SEE ELECTRICAL DRAWINGS & SPECIFICATIONS.
4. ALL RETURN AIR GRILLES IN PLENUM CEILING TO BE PROVIDED WITH FIRE DAMPERS SEE DEG. M-3.
5. ALL DIMENSIONS SHOWN FOR DUCTS ARE EXTERNAL DIMENSIONS.
6. PROVIDE 1/2" INTERNAL SOUND INSULATION ON ALL SUPPLY DUCTS & RETURN/EXHAUST DUCTS WHERE HATCHED.
7. PROVIDE TURNING VANES ON ALL SQUARE ELBOWS VANES TO BE CONSTRUCTED NOT TO TRANSMIT SOUND.
8. ACCESS SHALL BE PROVIDED TO ALL VOLUME CONTROL DAMPERS, ELECTRIC REHEAT COILS & FIRE DAMPERS.
9. DUCTWORK CONSTRUCTION, GAGES, FITTINGS & SUPPORTS SHALL BE AS A.S.H.R.A.E. STANDARDS.
10. DUCTWORK SHALL RUN BETWEEN OR THROUGH JOISTS AS INDICATED.
11. DIFFUSER & GRILL POSITIONS SHALL BE COORDINATED BY THE MECHANICAL CONTRACTOR WITH THE ELECTRICAL CONTRACTOR TO ENSURE NO CONFLICTION BETWEEN LIGHTS & AIR TERMINALS.
12. ALL LIGHT TROFFER DOWNIES SHALL HAVE SIDE CONNECTIONS.
13. ALL FUSIBLE LINKS ON FIRE DAMPERS SHALL BE RATED TO PART AT 185°F.
14. FIRE DAMPERS SHALL BE PROVIDED WHEREVER DUCTS PASS THROUGH PARTITION WALLS OR CEILING. ON THIS PROJECT THE CEILING SHALL BE DEEMED TO HAVE A FIRE RATING.
15. ALL DUCTWORK JOINTS SHALL BE SECURELY TAPED TO PREVENT LEAKAGE. MINIMUM OVERLAP OF TAPE SHALL BE 1/2" EITHER SIDE OF EXTERNAL SEAM.
16. FLEXIBLE CONNECTIONS SHALL BE OF FLAMEPROOF MATERIAL. BENDS SHALL BE EASY SWEEP FOR MINIMUM RESISTANCE. DISTORTION OF THE FLEXIBLE CONN. WILL NOT BE PERMITTED. FLEXIBLE CONNECTIONS SHALL BE MIN. 5FT & MAX. 8FT IN LENGTH.
17. PERMANENT ACCESS MUST BE PROVIDED TO AC-14 & AC-15 FOR MAINTENANCE.

**SYMBOLS**

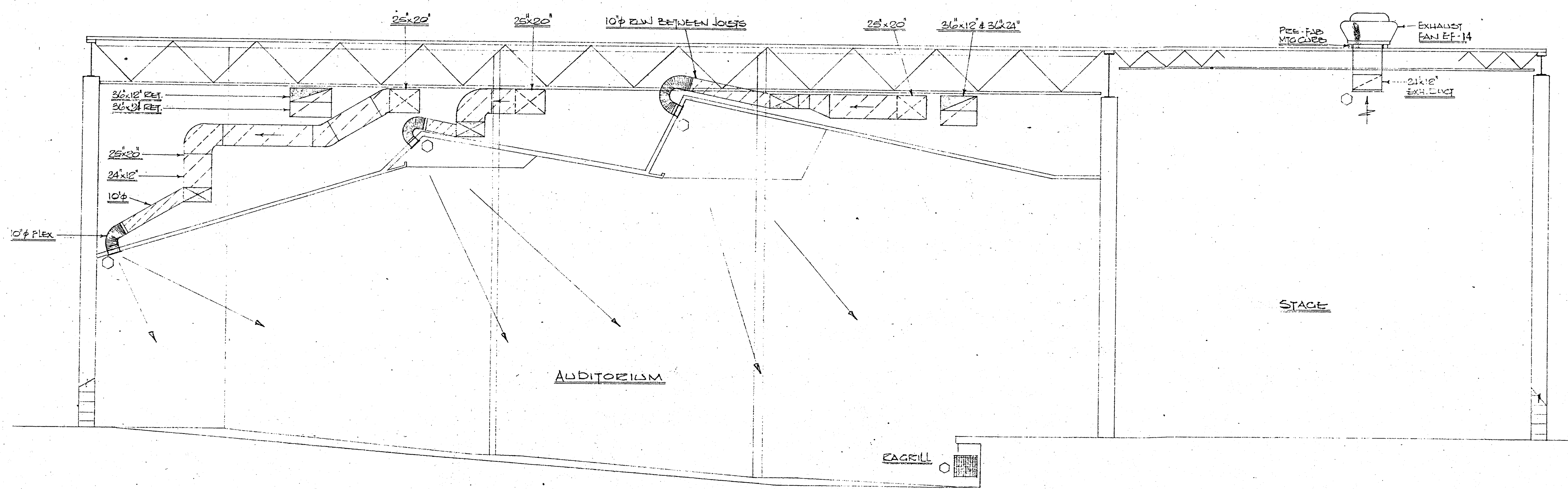
- |  |                       |    |                             |
|--|-----------------------|----|-----------------------------|
|  | ELECTRIC DUCT COIL    | AC | AIR CONDITIONING UNIT       |
|  | SUPPLY AIR TROFFERE   | HV | HEATING & VENT. UNIT        |
|  | SUPPLY DUCT           | EF | EXHAUST FAN                 |
|  | RETURN DUCT           | EV | RELIEF VENT.                |
|  | INSULATED DUCT        |    | ELECTRIC WALL HEATER        |
|  | SUPPLY DIFFUSER       |    | ELECTRIC FIN TUBE RADIATION |
|  | RETURN GRILLE         |    | DIFFUSER OR GRILLE          |
|  | VOLUME CONTROL DAMPER |    | ROOM THERMOSTAT             |
|  |                       | FD | FIRE DAMPER                 |
|  |                       | CP | CONTROL PANEL               |
|  |                       | CC | CANVAS CONNECTION           |

ELECTRIC COIL SCHEDULE										CONT.											
REF	UNIT	TYPE	KW	SIZE	VOLT	Φ	SIZE	Φ	ACCESSORIES	REMARKS	REF	UNIT	TYPE	KW	SIZE	VOLT	Φ	SIZE	Φ	ACCESSORIES	REMARKS
EC-1	A	QU	10	18/11	480	3	2	24	CFKQ	INDECO	EC-17	E	QU	3	14/10	277	1	2	24	CFKQ	INDECO
-2			10	18/12							-18			8	20/18	480	3	3			
-3			12.5	24/12							-19			1	12/8	277	1	1			
-4			10	21/10							-20			1	12/8	277	1	1			
-5			7.5	20/10							-21	E		7	20/14	480	1	2			
-6			15/9								-22	B		3	12/10	277	1	2			
-7			5	15/8							-23			1	12/8	277	1	1			
-8			5	12/8							24#24A			5	16/10	480	1	2			
-9			5	12/8							-25			2	12/8	277	1	1			
-10			5	18/8							-26			7	20/12	480	1	2			
-11	A		7.5	18/12							-27			5	18/12	480	1	2			
-12	E		24/12		480	1	2				-28			5	16/10	480	1	2			
-13			3	14/8	277	1	2				29			3	14/8	277	1	2			
-14			5	16/12	480	1	2				-30	B	QU	7	24/12	480	1	2	24	CFKQ	INDECO
-15			4	16/10	277	1	2				EC-31	B	QU	5	14/10	480	1	2	24	CFKQ	"
EC-16	E	QU	2	12/8	277	1	2	24	CFKQ	INDECO	EC-32	WALL	QU	12.5	18/8	480	3	2	24	CFKQ	"
											EC-33	WALL	QU	5	12/8	277	1	2	24	CFKQ	"

C: BUILT IN CONTACTOR F: BUILT IN FUSES K: INSULATED TERMINAL BOX Q: BUILT IN DISCONNECT SWITCH



**KEY PLAN**



**AUDITORIUM SECTION A-A**  
SCALE: 1/4" = 1'-0"  
REFER TO DRG. M-4 FOR PLAN

<b>HVAC GENERAL NOTES</b>	
THE PARTNERSHIP OF LYONS · MATHER · LECHNER Architects BRIDGEPORT CONNECTICUT	
MIDDLE SCHOOL — HIGH SCHOOL SHEPAUG VALLEY REGIONAL SCHOOL DISTRICT NO. 12	
DATE: 7-22-70	JOB NO. 055
DRAWN: AJT	CHECKED: S.F.
REVISIONS:	<b>M 8</b>