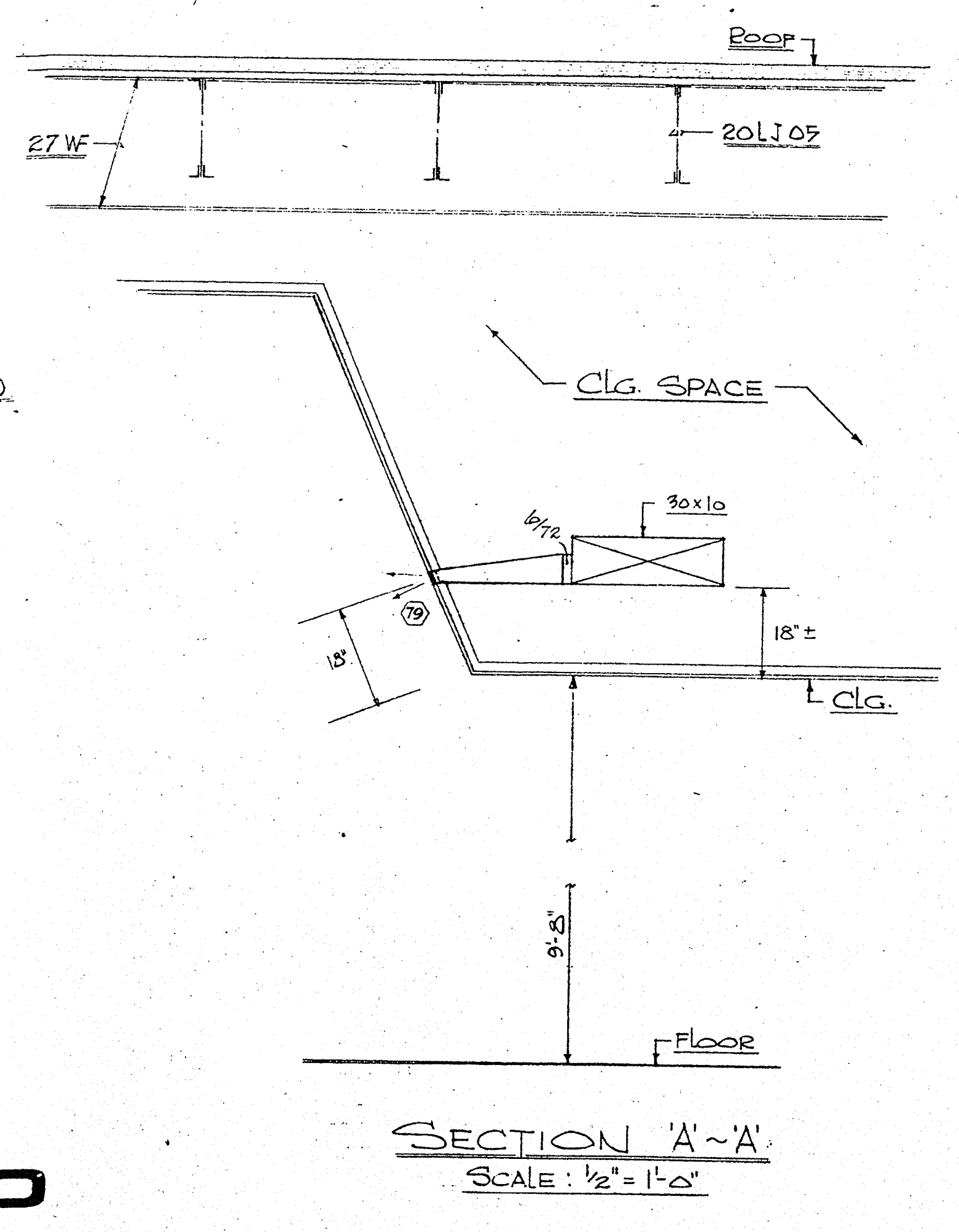
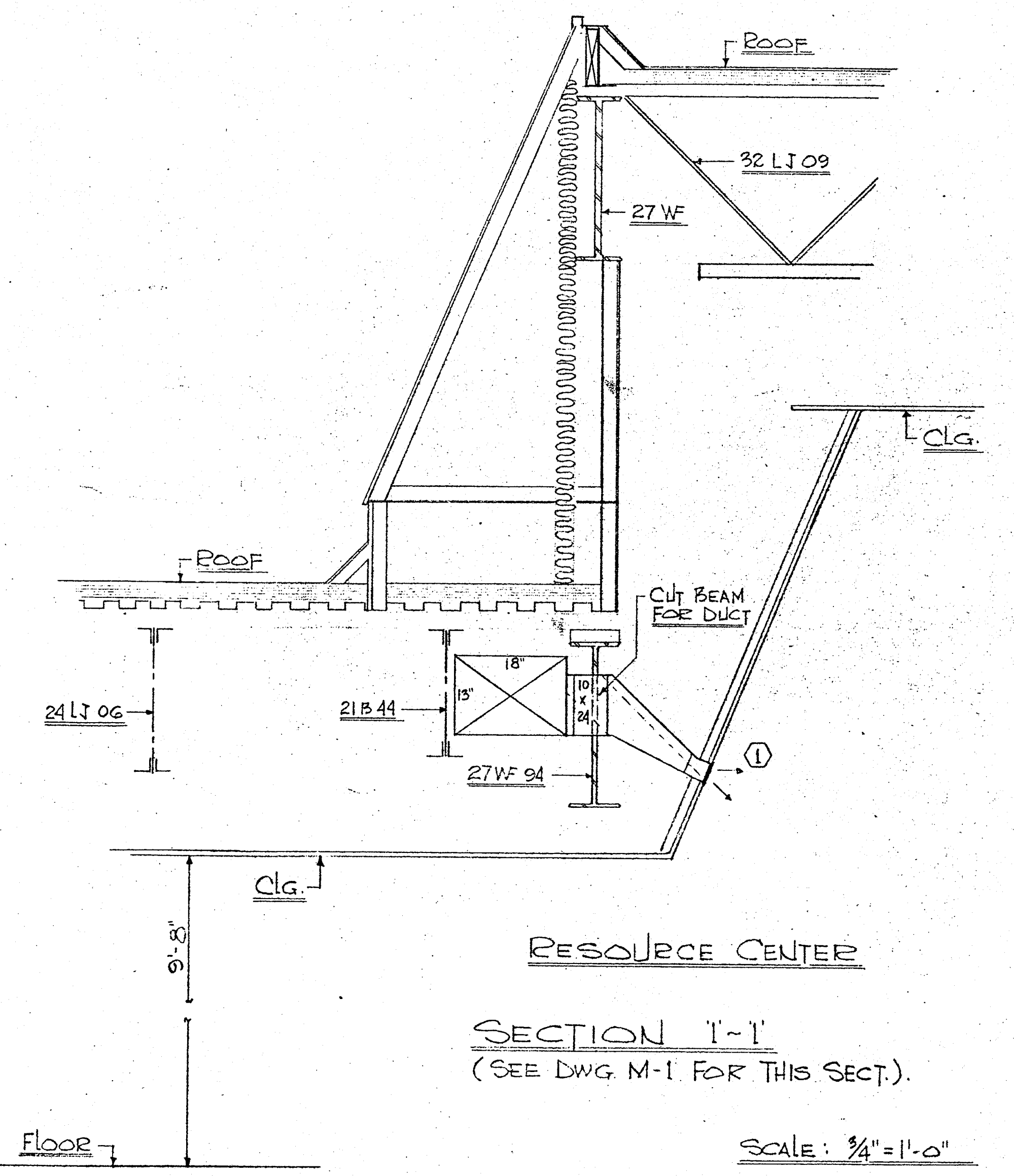
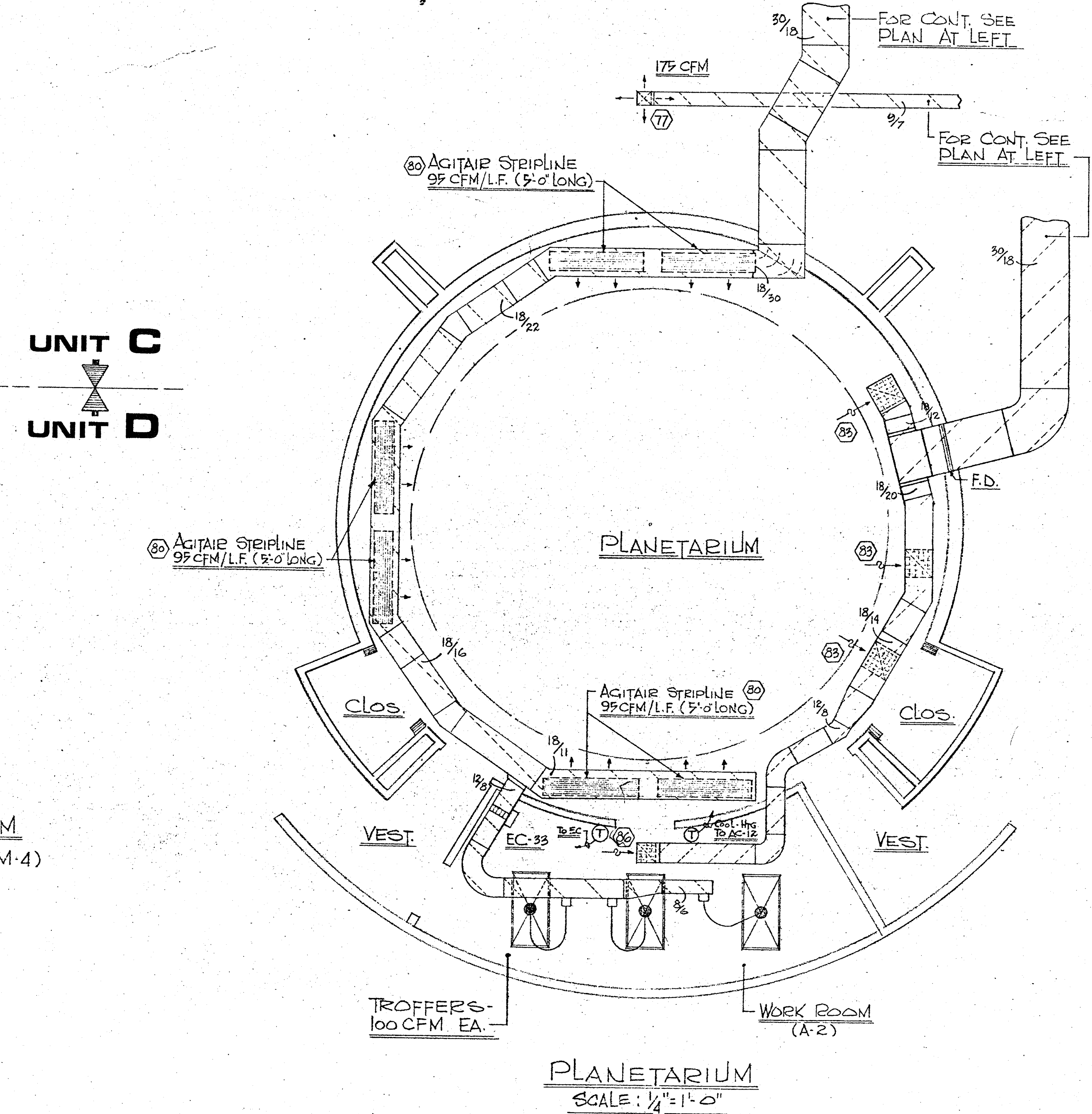
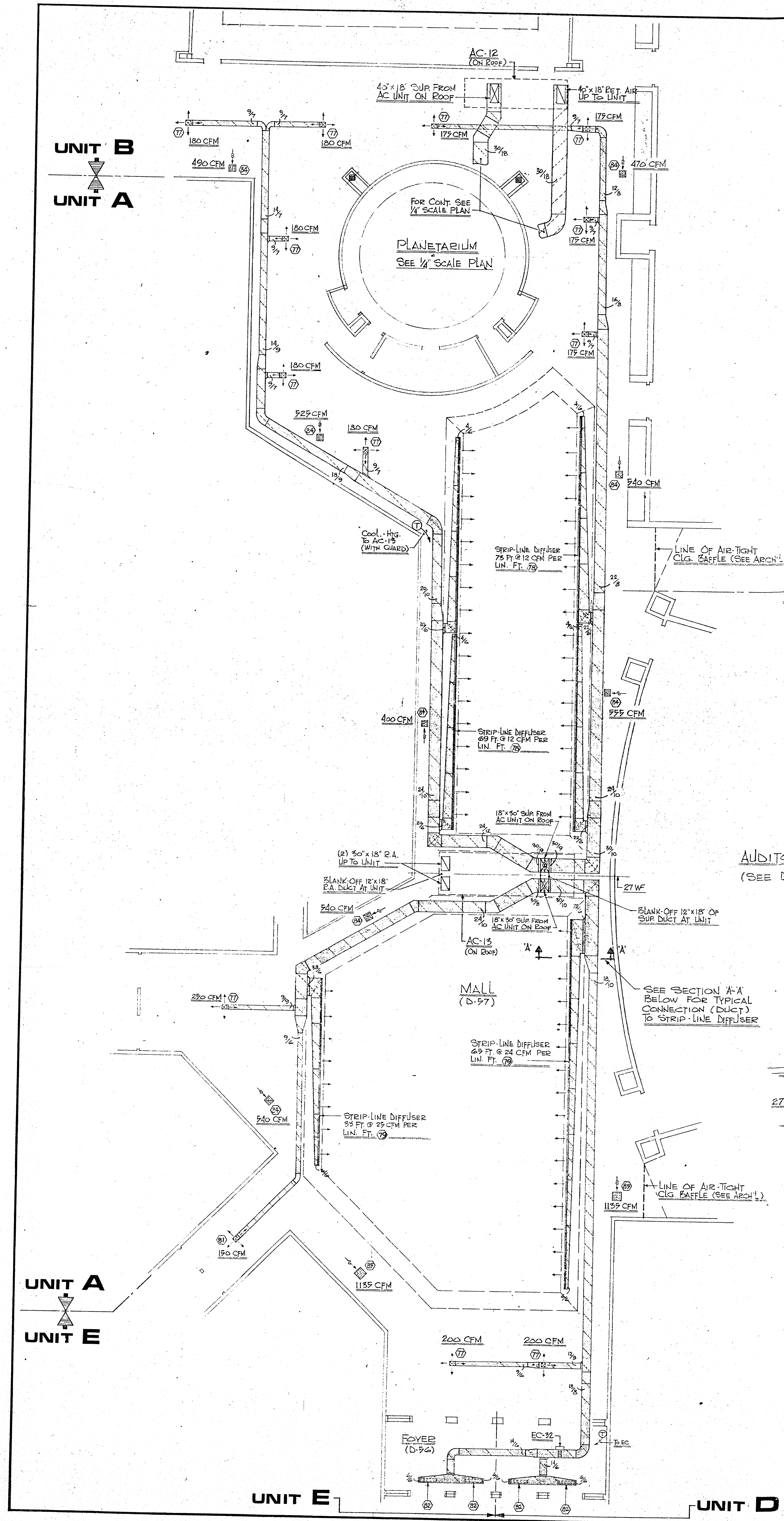


REF. NO.	UNIT	MFR.	SIZE	MODEL	TYPE	SUP. (CFM)	RET. (CFM)	ACCESS.	REMARKS
77	MALL	AGITAIR	9' x 9'	RC	40	AS NOTED	---	V & D.C.	
78	"	"	AS NOTED	STRIPLINE	2EF	12 CFM/L.F.	---	D & PFS	MAX. O.A. 2"
79	"	"	"	"	4 EF	24 CFM/L.F.	---	"	" 2"
80	PLANET.	"	3' x 6'	"	24 ES	99 CFM/L.F.	---	"	" 13"
81	MALL	"	6' x 6'	RC	40	AS NOTED	---	V & D.C.	
82	"	"	3' x 6'	STRIPLINE	12AH	125	---	D & PFS	MAX. O.A. 6"
83	PLANET.	"	18' x 18'	EC950	---	---	950	---	---
84	MALL	"	10' x 22'	"	---	---	---	AS NOTED	SEE NOTE #11 EISEN F.D.
85	"	"	22' x 22'	"	---	---	---	"	"
86	PLANET.	"	10' x 10'	"	---	---	300	---	---
87	B	"	24' x 12'	EDGO	---	---	---	EXH 1105	WITH DMFR

NOTE:
 UTILIZE CLG SPACE IN MALL AS RET. AIR PLENUM.
 FOR ALL EQUIPMENT SCHEDULES SEE DWGS. M-7 & M-8

SPECIAL NOTE:
 LOCATIONS WHERE DUCTS RUN THRU BAR JOISTS & DUCT IS TOO LARGE TO PASSTHRU, CUT BAR OR BARS TO ACCOMMODATE. REINFORCE IF NECESSARY.



- GENERAL NOTES:**
1. ALL DIMENSIONS SHOWN ARE OUTSIDE DIMENSIONS.
 2. SEE SYMBOL LIST DWG M-8 FOR ALL DESIGNATIONS.
 3. PROVIDE 1/2" INTERNAL SOUND LINING ON ALL DUCTS (SUPPLY, RETURN, EXHAUST)
 4. PROVIDE ACCESS TO ALL VOLUME DAMPERS, ELECTRIC REHEAT COILS & FIRE DAMPERS.
 5. PROVIDE TURNING VANES ON ALL SQUARE ELBOWS.

**MALL AND PLANETARIUM
 HVAC FLOOR PLAN**

THE PARTNERSHIP OF LYONS · MATHER · LECHNER Architects
 BRIDGEPORT CONNECTICUT

		MIDDLE SCHOOL — HIGH SCHOOL SKEPANG VALLEY REGIONAL SCHOOL DISTRICT NO. 12	
		DATE: 7-22-70	JOB NO. 999
DRAWN: S.J.		CHECKED: A.T.	
REVISIONS		M5	