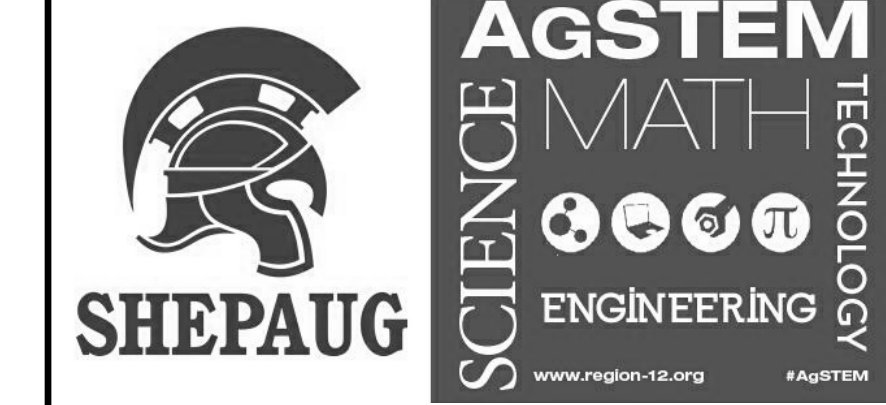
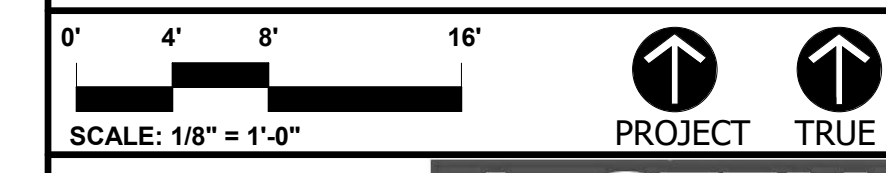
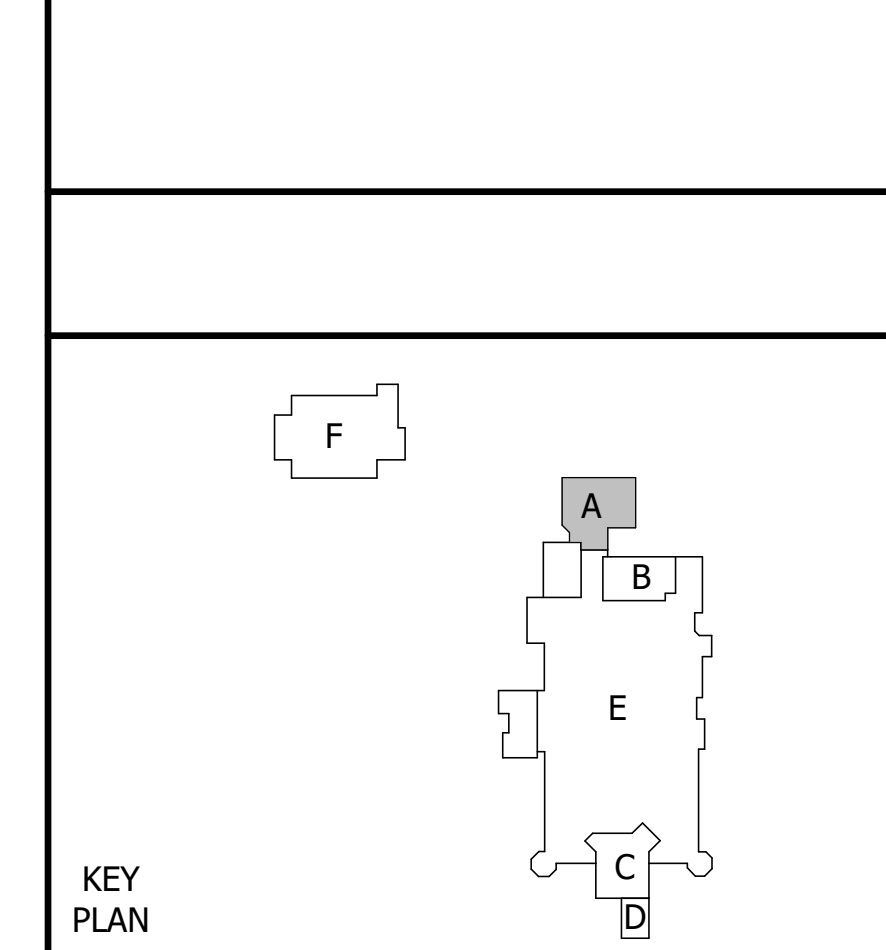


NOTE: THESE DOCUMENTS ARE NOT THE CONTRACT DOCUMENTS. THIS SET IS ISSUED SOLELY FOR THE CONVENIENCE OF THE CONSTRUCTION MANAGER. IT IS A COMPILATION OF THE BID DOCUMENTS AND PUBLISHED ADDENDUM. THESE DOCUMENTS DO NOT SUPERSEDE OR ALTER THE REQUIREMENTS OF THE CONTRACT DRAWINGS. THE COMPLETENESS AND/OR ACCURACY OF THE COMPILED INFORMATION IS NOT GUARANTEED AND THE DESIGNER ACCEPTS NO ADDITIONAL LIABILITIES BASED ON THEIR USE BY THE OWNER, CONSTRUCTION MANAGER, SUBCONTRACTORS, MATERIAL SUPPLIERS, OR OTHERS.

ISSUE DATE	
DATE	DESCRIPTION
NOVEMBER 5, 2018	PHASE 2: CONFORMED

REVISIONS	
DATE	DESCRIPTION



NEW
AGRISCIENCE
STEM ACADEMY
ADDITIONS & ASSOCIATED
RENOVATIONS
SHEPAUG VALLEY SCHOOL
159 SOUTH STREET
WASHINGTON, CT 06794
SCIENCE SPN: 212-0025 A/EC
VO-AG SPN: 212-0026 VA/N

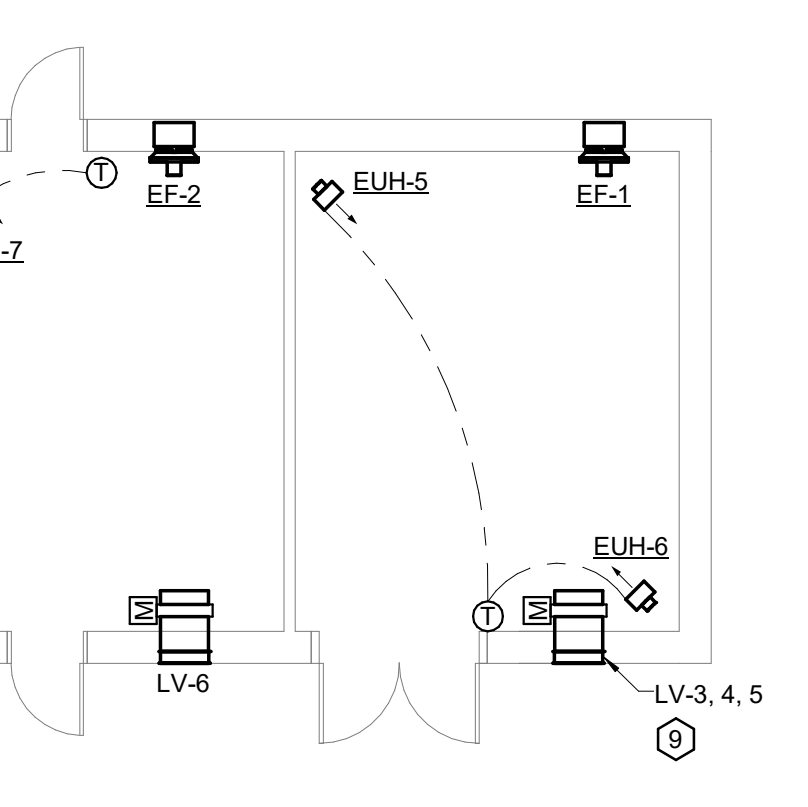
PROJECT NO.: 15073.00 DRAWN BY: PA

MECHANICAL DUCTWORK MAIN LEVEL FLOOR PLAN AREA A
DRAWING NO.: **M1.01**

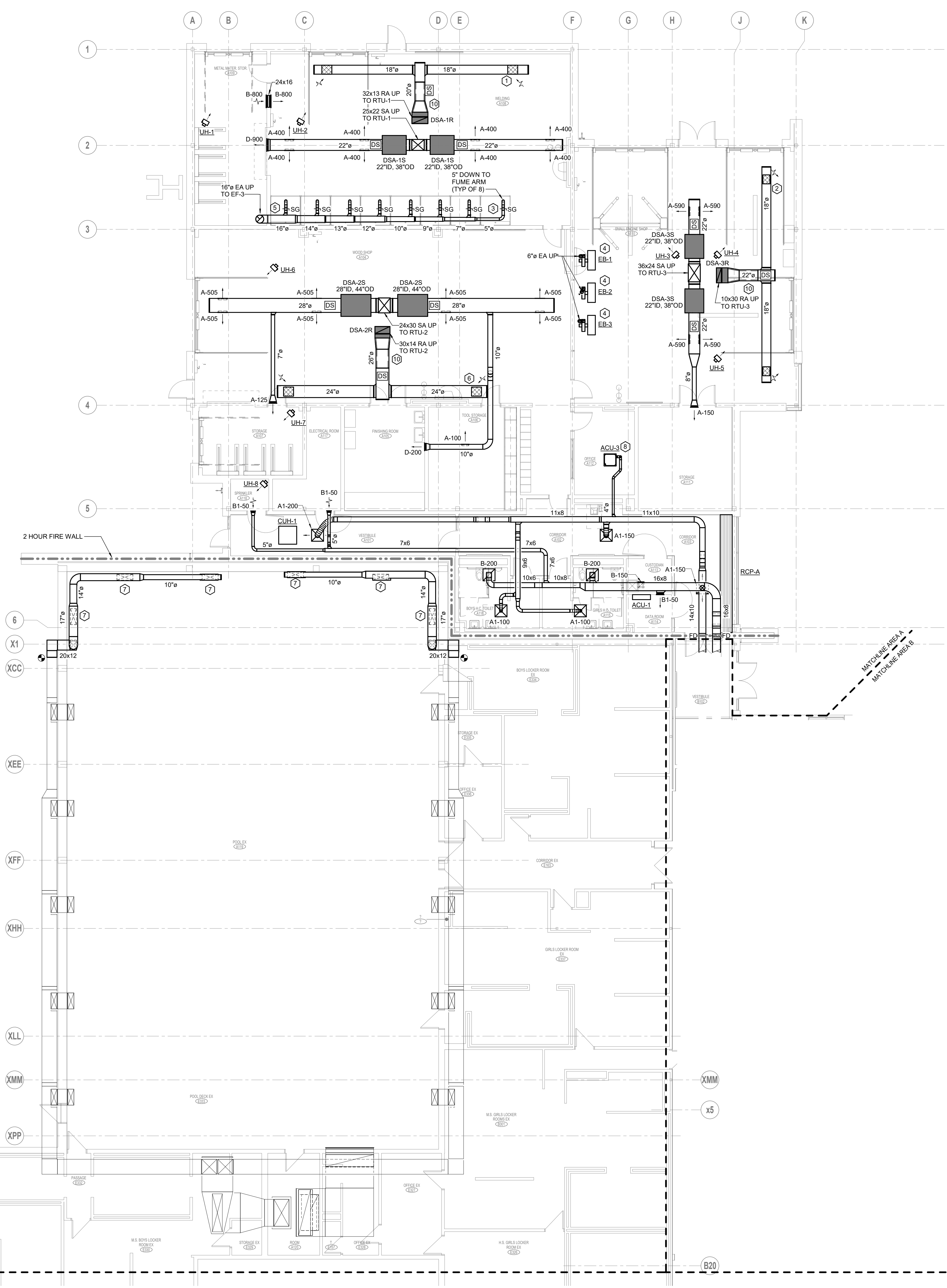
- ### HVAC GENERAL NOTES
- ALL DUCTWORK AND PIPING CROSSING SEISMIC JOINTS SHALL ACCOMMODATE DIFFERENTIAL MOTION. REFER TO SPECIFICATION FOR ADDITIONAL INFORMATION. SEE ARCHITECTURAL AND STRUCTURAL DRAWINGS FOR LOCATIONS.
 - ALL TOILETS & BATHROOMS SHALL HAVE 3/4" UNDERCUT DOORS.
 - PROVIDE VOLUME DAMPERS ON ALL SUPPLY, EXHAUST, AND RETURN BRANCH DUCTS, INCLUDING ALL INDIVIDUAL BRANCHES TO REGISTERS, GRILLES, AND DIFFUSERS.
 - COORDINATE AND VERIFY LOCATIONS OF ALL ITEMS REQUIRING ACCESS WITH ARCHITECT IN FIELD, INCLUDING VALVES, VOLUME DAMPERS, FIRE DAMPERS, ETC.
 - ALL THERMOSTATS OR TEMPERATURE SENSORS LOCATED ON OUTSIDE WALLS SHALL HAVE INSULATED PAD BEHIND THE THERMOSTATS OR TEMPERATURE SENSORS.
 - ALL MOTORIZED DAMPERS SHALL BE WIRED BY ATC CONTRACTOR, COORDINATE VOLTAGE REQUIREMENTS.
 - ALL MECHANICAL EQUIPMENT TO BE A MINIMUM 10FT FROM THE EDGE OF THE ROOF.
 - MAINTAIN A MINIMUM DISTANCE OF 25FT FROM ALL INTAKES AND EXHAUSTS.

- ### ACOUSTICAL REQUIREMENT NOTES
- ALL INTERNAL LINERS & INSULATION SHALL BE NON-POROUS SEALED TYPE.
 - PROVIDE MIN. 25'-0" OF 1" INTERNAL ACOUSTICAL DUCT LINER UPSTREAM AND DOWNSTREAM OF EACH AIR HANDLING UNIT AND FAN UNLESS FAN HAS A DEDICATED SILENCER. PROVIDE INTERNAL ACOUSTICAL DUCT LINER AND 18 GAUGE DUCTWORK BETWEEN AIR HANDLING UNIT OR FAN TO SILENCER WHEN A SILENCER IS PROVIDED.
 - ALL SUPPLY, RETURN, AND EXHAUST DIFFUSERS AND GRILLES LOCATED OVER CLASSROOMS AND LEARNING AREAS THAT ARE HARD DUCT CONNECTED SHALL HAVE MIN. 5'-0" OF 1" INTERNAL INSULATION.
 - ALL SUPPLY, RETURN, AND EXHAUST DIFFUSERS AND GRILLS SHALL BE SELECTED AT 20 NC OR LOWER.

- ### DRAWING NOTES
- 18"x18" DUCT OPENING ON TOP OF DUCT WITH 1" WELDED WIRE MESH SCREEN (TYPICAL OF 2).
 - 18"x18" DUCT OPENING ON TOP OF DUCT WITH 1" WELDED WIRE MESH SCREEN (TYPICAL OF 2).
 - PROVIDE SLIDE GATE FOR EACH FUME ARM (TYPICAL OF 8). BALANCE EACH FUME ARM TO 500 CFM.
 - PROVIDE MONOXIVENT SERIES 9000 SPRING RETRACTABLE HOSE REEL WITH 20' SERIES 9000 EXHAUST EXTRACTION HOSE AND 0.45 REEL MOUNTED BLOWER (1/2 HP, 208/230V/3PH) OR APPROVED EQUAL. CONNECT 6" EXHAUST DUCT TO FACTORY SUPPLIED BLOWER AND EXHAUST UP THROUGH ROOF TO GOOSENECK. COORDINATE REEL LOCATION WITH THE PROGRAM.
 - PROVIDE SPARK COOLER INLINE AND UPSTREAM OF FAN.
 - 20" x 34" DUCT OPENING ON TOP OF DUCT WITH 1" WELDED WIRE MESH SCREEN (TYPICAL OF 2).
 - INSTALL EXISTING DIFFUSER PRESERVED DURING DEMOLITION ON THE PROPOSED DUCTWORK. MATCH THE ELEVATIONS OF THE EXISTING TO REMAIN DIFFUSERS.
 - CONNECT 4" DUCTWORK TO THE CASSETTE OUTSIDE AIR CONNECTION. BALANCE TO 25 CFM.
 - REFER TO ARCHITECTURAL ELEVATIONS FOR ELEVATIONS OF LV-3, LV-4, AND LV-5. PROVIDE MOTORIZED DAMPER FOR EACH LOUVER.
 - PROVIDE 5' OF 1" ACOUSTICAL LINING DOWNSTREAM OF SILENCER.



2 FIRE PUMP HOUSE
1/8" = 1'-0"



1 MAIN LEVEL - AREA A
1/8" = 1'-0"

MATCHLINE AREA A
MATCHLINE AREA E