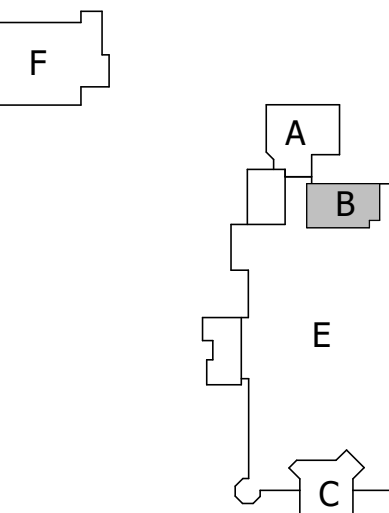


NOTE: THESE DOCUMENTS ARE NOT THE CONTRACT DOCUMENTS. THIS SET IS ISSUED SOLELY FOR THE CONVENIENCE OF THE CONSTRUCTION MANAGER. IT IS A COMPILATION OF THE BID DOCUMENTS AND PUBLISHED ADDENDUM. THESE DOCUMENTS DO NOT SUPERSEDE OR ALTER THE REQUIREMENTS OF THE CONTRACT DRAWINGS. THE COMPLETENESS AND/OR ACCURACY OF THE COMPILED INFORMATION IS NOT GUARANTEED AND THE DESIGNER ACCEPTS NO ADDITIONAL LIABILITIES BASED ON THEIR USE BY THE OWNER, CONSTRUCTION MANAGER, SUBCONTRACTORS, MATERIAL SUPPLIERS, OR OTHERS.

ISSUE DATE	
DATE	DESCRIPTION
NOVEMBER 5, 2018	PHASE 2: CONFORMED

REVISIONS	
DATE	DESCRIPTION
September 20, 2018	PHASE 2: DRAWING REVISED FOR ADDENDUM NO. 1



KEY PLAN

SCALE: AS NOTED PROJECT TRUE



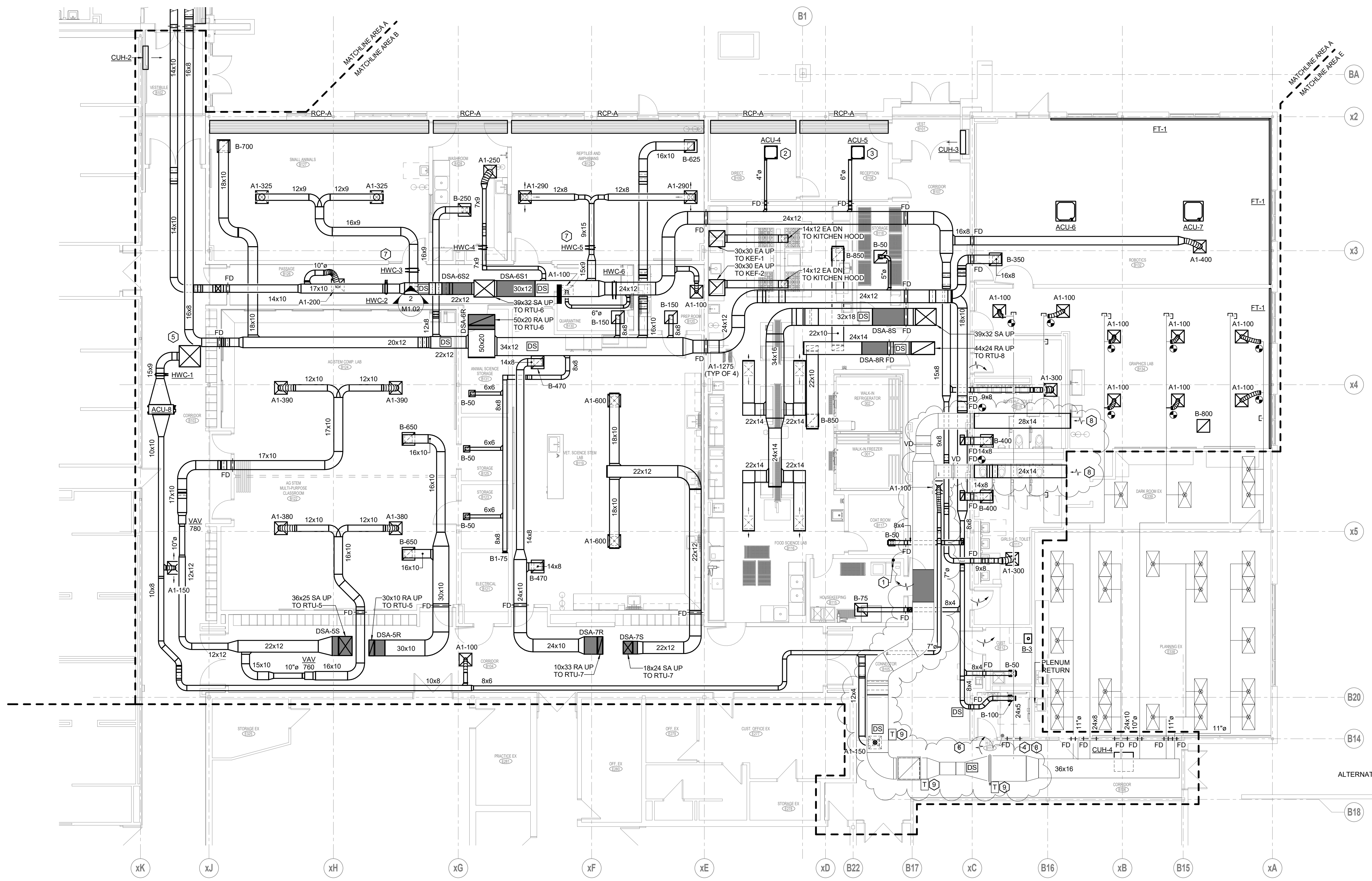
NEW
AGRISCIENCE
STEM ACADEMY
ADDITIONS & ASSOCIATED
RENOVATIONS
SHEPAUG VALLEY SCHOOL
159 SOUTH STREET
WASHINGTON, CT 06794
SCIENCE SPN: 212-0025 A/EC
VO-AG SPN: 212-0026 VA/N

PROJECT NO.: 15073.00 DRAWN BY: PA

MECHANICAL DUCTWORK
MAIN LEVEL FLOOR
PLAN AREA B

DRAWING NO.: **M1.02**

2016 © COPYRIGHT KAESTLE BOOS ASSOC., INC.



1 MAIN LEVEL - AREA B
1/8" = 1'-0"

HVAC GENERAL NOTES

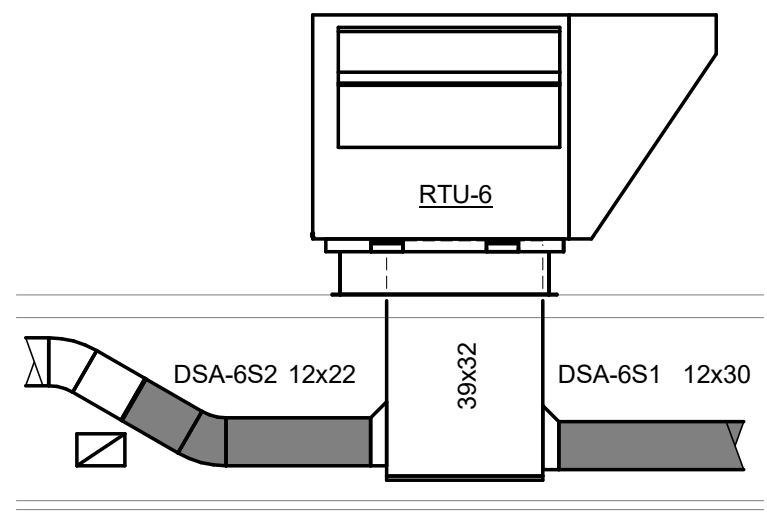
1. ALL DUCTWORK AND PIPING CROSSING SEISMIC JOINTS SHALL ACCOMMODATE DIFFERENTIAL MOTION. REFER TO SPECIFICATION FOR ADDITIONAL INFORMATION. SEE ARCHITECTURAL AND STRUCTURAL DRAWINGS FOR LOCATIONS.
2. ALL TOILETS & BATHROOMS SHALL HAVE 3/4" UNDERCUT DOORS.
3. PROVIDE VOLUME DAMPERS ON ALL SUPPLY, EXHAUST, AND RETURN BRANCH DUCTS, INCLUDING ALL INDIVIDUAL BRANCHES TO REGISTERS, GRILLES, AND DIFFUSERS.
4. COORDINATE AND VERIFY LOCATIONS OF ALL ITEMS REQUIRING ACCESS WITH ARCHITECT IN FIELD, INCLUDING VALVES, VOLUME DAMPERS, FIRE DAMPERS, ETC.
5. ALL THERMOSTATS LOCATED ON OUTSIDE WALL SHALL HAVE INSULATED PAD BEHIND.
6. ALL MOTORIZED DAMPERS SHALL BE WIRED BY ATC CONTRACTOR. COORDINATE VOLTAGE REQUIREMENTS.

ACOUSTICAL REQUIREMENT NOTES

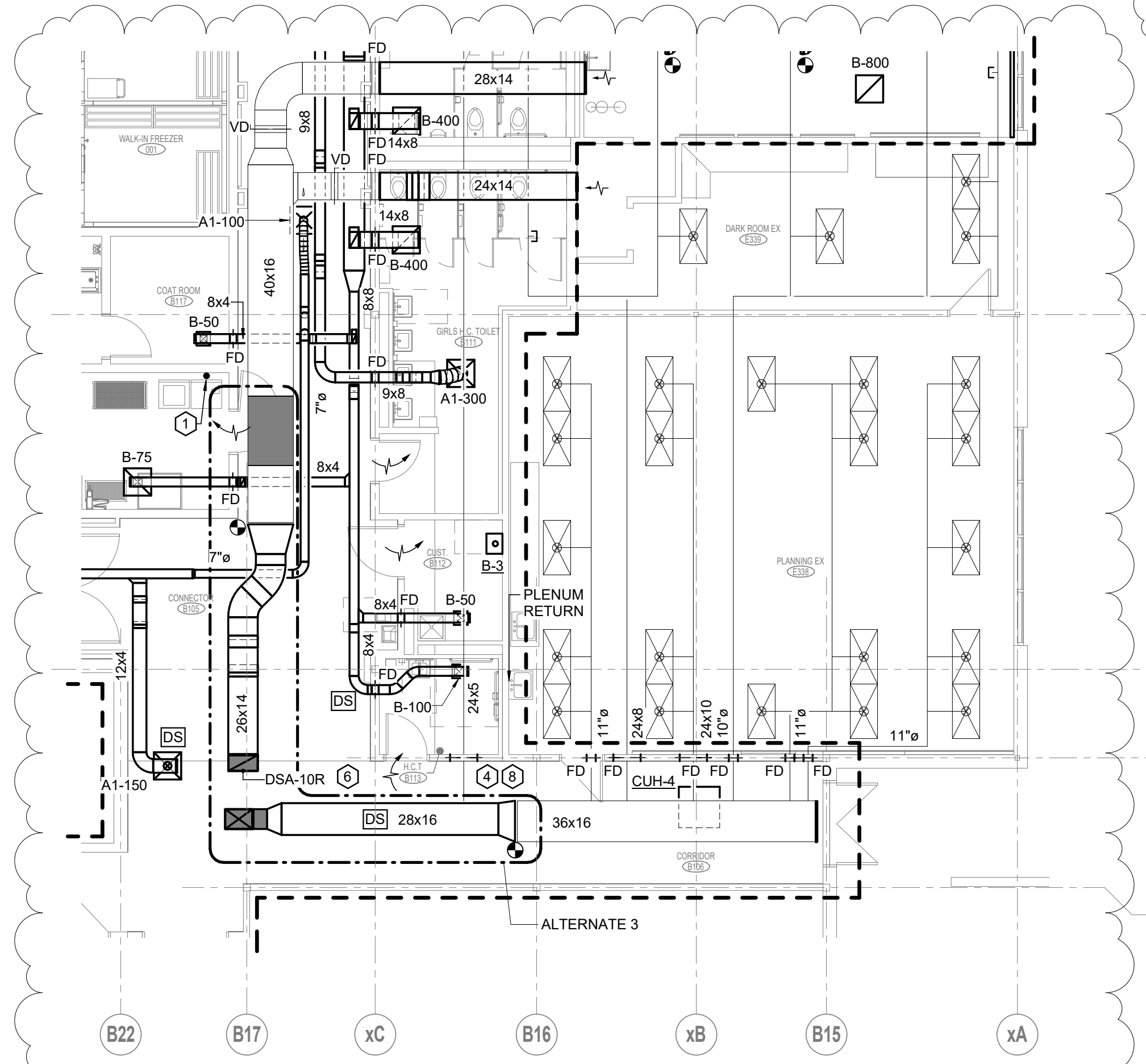
1. ALL INTERNAL LINERS & INSULATION SHALL BE NON-POROUS SEALED TYPE.
2. PROVIDE MIN. 25'-0" OF 1" INTERNAL ACOUSTICAL DUCT LINER UPSTREAM AND DOWNSTREAM OF EACH AIR HANDLING UNIT AND FAN UNLESS FAN HAS A DEDICATED SILENCER. PROVIDE INTERNAL ACOUSTICAL DUCT LINER AND 18 GAUGE DUCTWORK BETWEEN AIR HANDLING UNIT OR FAN TO SILENCER WHEN A SILENCER IS PROVIDED.
3. ALL SUPPLY, RETURN, AND EXHAUST DIFFUSERS AND GRILLES LOCATED OVER CLASSROOMS AND LEARNING AREAS THAT ARE HARD DUCT CONNECTED SHALL HAVE MIN. 5'-0" OF 1" INTERNAL INSULATION.
4. ALL SUPPLY, RETURN, AND EXHAUST DIFFUSERS AND GRILLS SHALL BE SELECTED AT 20 NC OR LOWER.
5. PER ACOUSTICAL CONSULTANT REQUIREMENTS, PROVIDE DUCT SILENCERS ON ALL VAV BOXES IN ADDITION TO 10'-0" OF 1" ACOUSTICAL LINER.

DRAWING NOTES

1. PROVIDE 4" SPUN ALUMINUM ROOF CAP WITH 12" EXTENSION (ALDES RCR OR EQUIVALENT).
2. CONNECT 4" DUCT TO CASSETTE OUTSIDE AIR CONNECTION. BALANCE TO 25 CFM.
3. CONNECT 6" DUCT TO CASSETTE OUTSIDE 4" AIR CONNECTION. BALANCE TO 25 CFM. BALANCE TO 75 CFM.
4. PROVIDE FIRE DAMPER AND ACCESS DOOR IN EXISTING DUCTWORK, (TYP).
5. BASE BID: PROVIDE 22"x22" DUCTWORK UP TO GREENHECK GRSH-12 INTAKE HOOD OR EQUAL. PROVIDE 12" HIGH ROOF CURB.
6. ALTERNATE 3: PROVIDE 40" x 40" DUCTWORK UP TO INTAKE HOOD PROVIDED UNDER PHASE 1 AND RELOCATED UNDER PHASE 2.
7. BASE BID: THE FAN, HOT WATER COIL AND RETURN DUCTWORK PROVIDED UNDER PHASE 1 SHALL REMAIN.
8. ALTERNATE 3: PROVIDE RTU-10, DUCTWORK, ETC AS SHOWN.
9. PROVIDE 10'-0" OF 1" INTERNAL ACOUSTICAL DUCT LINER DOWNSTREAM OF HWC-3 AND HWC-5.
10. PROVIDE 12" WIRE MESH SCREEN ON OPEN DUCT.
11. BASE BID: PROVIDE RETURN AIR, MIXED AIR AND SUPPLY AIR TEMPERATURE SENSORS. UPDATE GRAPHICS DISPLAY TO INCLUDE RA, MA, AND SA TEMPERATURES.
12. ALTERNATE 3: PROVIDE INSTRUMENTATION FOR RTU-10 AS INDICATED ON DETAIL 1/M4.01.



2 DSA-6S1 DETAIL
1/4" = 1'-0"



3 AREA B - Alternate 3
1/8" = 1'-0"