

RSD 10 School Continuous Improvement Plans

BOARD OF EDUCATION

NOVEMBER 8, 2021

Continuous Improvement Plan at the Elementary Schools

2021-2022



Literacy

Goal: 100% of students will read on grade level by the end of their 3rd and 4th grade years as measured by the F&P Benchmark Assessment System

2021-2022 Target: 92% of students in 3rd grade and 90% of students in 4th grade will read on grade level by the end of the school year

Baseline Data: 84% [82%] of students in 2nd grade and 82% [95%] of students in 3rd grade were reading on grade level at the end of last year

Focus Areas

- Use phonics assessments consistently for diagnostic purposes at the classroom level
- Incorporate phonics instruction and word study in grades 3 & 4 classroom instruction
- Work with Teachers College staff developers to incorporate word study components into Reading & Writing Workshop
- Adjust the pace of K-4 literacy curriculum based on student need and priority standards
- Utilize WIN (What I Need) intervention block for targeted phonics instruction

Numeracy

Goal: 100% of students will meet grade level standards in math on the Smarter Balanced Assessment (SBA)

2021-2022 Target: 70% of students in 3rd grade and 75% of students in 4th grade will meet grade level standards in math by the end of the school year

Baseline Data: 61% of last year's third grade students and 66% of last year's fourth grade students met grade level standards in math

Focus Areas

- Analyze formative assessments to make instructional decisions:
 - Bridges Unit Screeners
 - Bridges Checkpoints
 - SBA Interim Assessments
- Utilize What I Need (WIN) intervention block for targeted reteaching and skills instruction
- Implement Math Work Places (stations) strategically based on student data

Internal Community

Goal: Offer a wide variety of before, during and after school activities designed to meet the diverse interests of our students so that 100% of families respond favorably to the survey question, "How well do the activities offered at your child's school match his/her interests?"

2021-2022 Target: By spring of 2022, 80% of families will respond favorably to the survey question, "How well do the activities offered at your child's school match his/her interests?"

Baseline Data: Positive responses to survey question: In 2021, 58%. In 2019, 63%. In 2018, 66%.

Focus Areas

- Encourage elementary staff to offer before/after school programs through the district
- Work with PTA/PTO to identify parents or community members who would like to share a skill or hobby with elementary students
- Contract with 2-3 outside agencies to offer before/during or after school programs

Continuous Improvement Plan at Har-Bur Middle School

2021-2022



Literacy

Goal: 100% of students at Har-Bur will meet the English Language Arts/Literacy Achievement Benchmark as measured by the Smarter Balanced or Star Assessments.

2021-2022 Target

- Spring 2022 Smarter Balanced Results

Grade	Percent of Students at Levels 3 and 4
5	66 [61]
6	68 [63]
7	76 [71]
8	71 [66]

Focus Areas

- Provide focused professional development on analyzing formative assessments results to differentiate instruction and focus intervention.
- Work with outside consultants to coach literacy best practices at the classroom level, word study, and data decision making.
- Add Developmental Spelling Assessment and follow up with word study (Grade 5).
- Support students with explicit literacy instruction in the classrooms and in pull-out work with interventionists during WIN (What I Need) time.

Numeracy

Goal: 100% of students at Har-Bur will meet the Math Achievement Benchmark as measured by the Smarter Balanced and Star Assessments.

2021-2022 Target

- Spring 2022 Smarter Balanced Results

Grade	Percent of Students at Levels 3 and 4
5	60 [42]
6	60 [43]
7	62 [57]
8	62 [57]

Focus Areas

- Provide focused professional development to analyze formative assessments results to differentiate instruction and identify standards and skills focus areas.
- Provide professional development opportunities for teachers to build capacity and deeper understanding of Math Curriculum (Bridges and Illustrative Curriculum).
- Identify students in need for support and offer learning opportunities to those students including during our WIN (What I Need) Block, other times during the school day as well as after school.

Internal Community

Goal: 100% of students will feel connected to the adults at Har-Bur Middle School and can identify at least one trusted adult.

2021-2022 Target: On the Spring 2022 Student Survey, at least 75% of students answer favorable to the question: How connected do you feel to the adults at your school?

Baseline Data: On the Spring 2021 Student Survey, 31% of students in Grades 6-8 answer favorable to the question: How connected do you feel to the adults at your school?

Focus Areas

Continue

Continue to build staff capacity towards supporting students and developing positive relationships.

Reboot

Reboot our PAW Student Advisory Program

Expand

Expand our Extra Curricular Offerings for students to allow for more participation

Continuous Improvement Plan at Lewis Mills High School

2021-2022



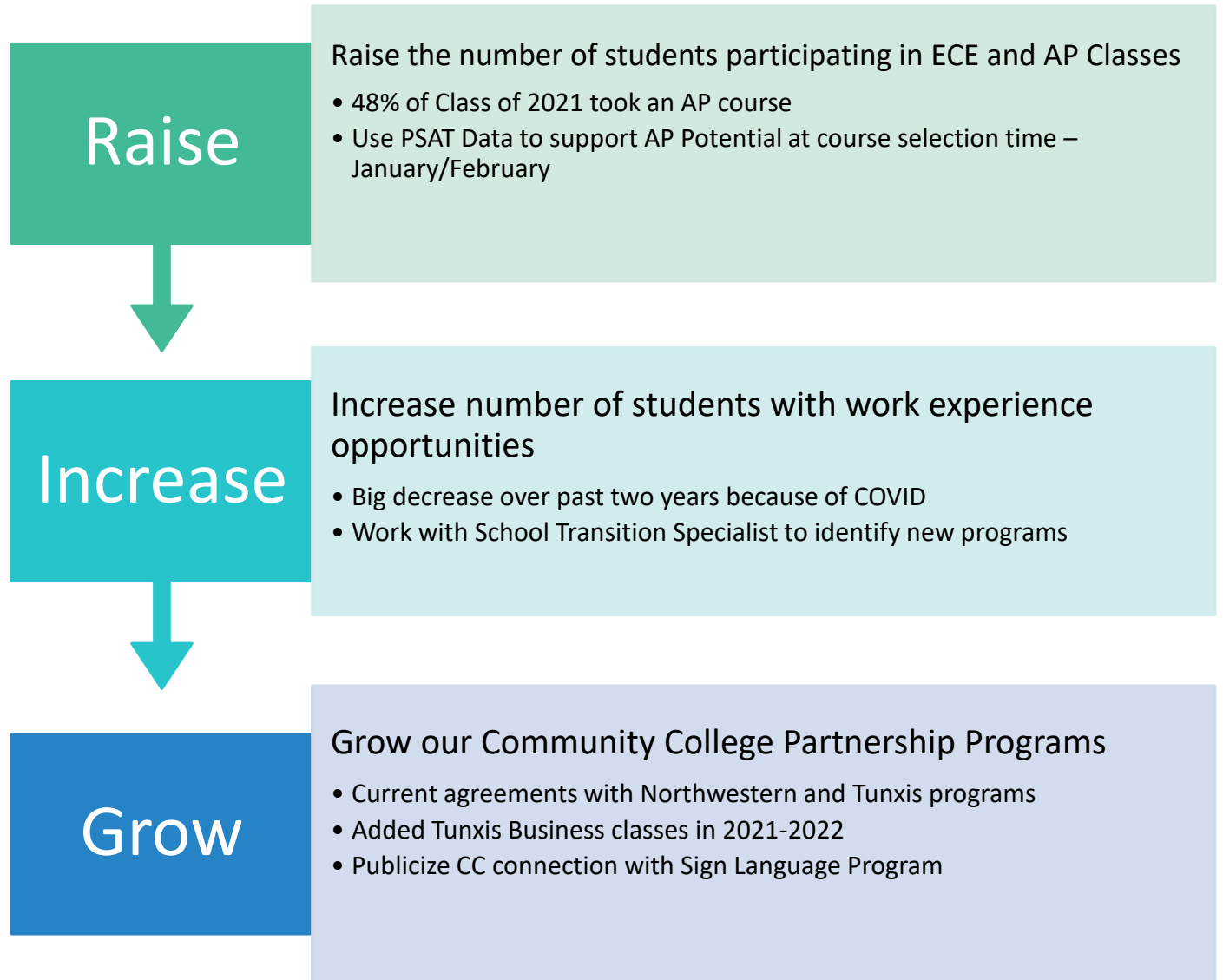
Post-Secondary Experience

Goal: 100% of students will have a post-secondary experience during their time at LSM.

2021-2022 Target: 85% of students in the Class of 2022 will have a post-secondary experience before they graduate in June.

Baseline Data: 78% of the Class of 2021 had a post-secondary experience.

Focus Areas



Math Benchmark Scores

Goal: 75% of students will reach the math benchmark as determined by their SAT score.

2021-2022 Target: 60% of students in the Class of 2023 will reach the math benchmark in the Spring of 2022.

Baseline Data: 48% of students in the Class of 2023 reached the math benchmark in the fall of 2020.

Focus Areas

Raise

Raise the % of high needs students achieving the math benchmark on the PSATs.

- Disaggregate high needs scores
- Provide additional support for identified students



Increase

Increase academic supports available to students.

- School SST team will monitor #s of students in learning labs
- Provide SAT/PSAT help after school



Grow

Grow our math intervention opportunities

- After-school math support
- Investigate creation of “math lab”
- Math teachers in learning labs

Student Participation

Goal: 100% of students will participate in a co-curricular club or sport.

2021-2022 Target: 90% of students at LSM will participate in a co-curricular club or sport.

Baseline Data: As of this fall, 83% of students are projected to participate in a club or sport.

Focus Areas

Raise

Raise the number of students participating in After-School clubs.

- Currently offering 27 different club offerings
- Work with ATA budget to allow for new student clubs

Increase

Increase opportunities for students to participate in LSM athletic teams.

- Monitor JV program participation and middle school numbers

Grow

Grow our opportunities for student participation

- Meet with students to discuss new initiatives
- Recruit teachers/staff to run new programs
- Look at alternate times for clubs/activities to meet