

A copublication of CTE & the CTE PTO

November 30, 2023

# CHERRY TREE CHATTER

## KEY DATES

**Nov 29 – Dec 1**

Elf Workshop

**Dec 4**

Science Fair

Registration Opens

**Dec 13**

Late Start

Wellness Wednesday

**Dec 22 – Jan 8**

Winter Break –

No School

**Jan 10**

Late Start

**Jan 15**

Martin Luther King, Jr

Day – No School

**Jan 16**

Science Fair

Registration Closes

**Jan 16, 23, 30**

Lego Club Session 1

**Jan 22**

PTO General

Membership Meeting

**Jan 24**

Late Start

**Feb 1**

Winter Family

Fun Night

For announcements, updates, and reminders for CTE activities,  
follow Cherry Tree PTO on social media!

[Facebook](#) | [Twitter](#) | [Instagram](#)

For a working calendar of  
events, please click [HERE](#).

## SCHOLASTIC BOOK FAIR – THANK YOU!

We experienced pure BOOK JOY in November at the CTE Book Fair!

Thank you to the many many volunteers who supported our student shopping times and helped us welcome parents and GRAND friends into CTE for our special evening events.

Thank you to our teachers for enthusiastically supporting the Book Fair every year, joining us to read with PJs and Cocoa and sharing your book recommendations with the students.

In addition to a remarkable book fair, our school raised over \$1,350 for All for Books with our coin collection – Wow! This program helps to purchase books for our classroom libraries, help kids in our own school get books, and impact the community. It is a win-win-win.



## WELLNESS WEDNESDAYS

During November's Wellness Wednesday, we had game show style questions and split the room in order to test students' knowledge on identifying some unique super foods. Very few of the kids knew what a parsnip or leek was, but they now know these super foods and their many health benefits. Most kids were impressed with the dragon fruit.



Wellness Wednesdays needs your help!

Please **CLICK HERE** to volunteer  
(background check required)

## WINTER FAMILY FUN NIGHT

Save the Date for  
Winter Family Fun Night!

**Thursday, February 1st**

Keep a lookout for more information  
coming soon!



## ART MATERIALS NEEDED

Mrs. Crispin is in need of donated materials for the art classroom. If you have the below items, please feel free to send them with your child!

- 12 x 12 scrapbook paper
- Small plastic containers (such as lunchbox size applesauce/yogurt)
- Regular plastic containers (such as deli, cottage cheese, yogurt, etc.)



## STAFF FAVORITE THINGS

Holidays are approaching, and we often get requests for staff appreciation ideas. For those interested, we've compiled lists of our CTE teachers' and staff's favorite things for gifting inspiration!

Please click below to visit the  
[Staff Favorite Things Webpage](#)





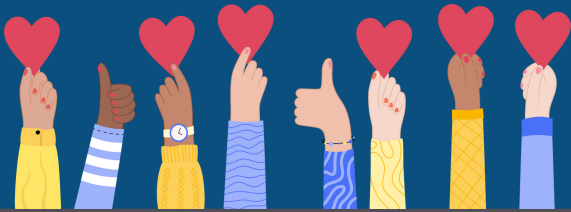
## VOLUNTEER

We need your support! Cherry Tree PTO needs your time and talent to make this Fall's events and initiatives successful!

Parents and grandparents, please fill out the Google Form below to indicate interest in volunteering this Fall.

You will need to complete and pass a background check prior to volunteering. If you have any questions, please e-mail the PTO at [cherrytreeppto@gmail.com](mailto:cherrytreeppto@gmail.com)

### VOLUNTEER INTEREST FORM



## TREASURER'S REPORT

The current [Treasurer's Report](#) is available, as well as previous reports. Learn how your PTO dollars were used to enhance students' experiences at CTE.

Budget for the 2023-2024 school year can be viewed [HERE](#).

## SMALL BUSINESS DIRECTORY

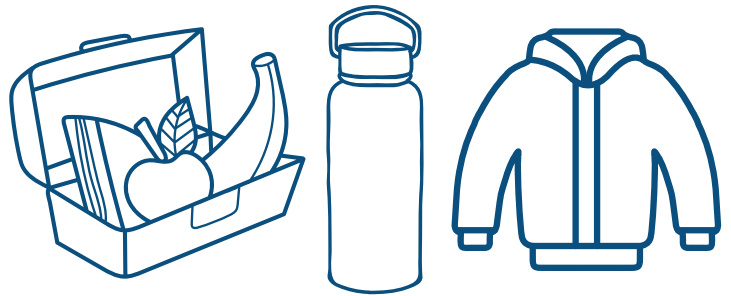
Do you own a small business?  
CTE wants to support you!

Click [HERE](#) to add your business to our CTE small business directory!



## STUDENT BELONGINGS

Be sure to label your student's personal belongings, such as coats/jackets, water bottles, lunch boxes, etc. If an item is missing, please be sure to have your student check the Lost and Found!



## 2023 – 2024 PTO SLATE

Click [HERE](#) to view the PTO Slate for the Executive and General Board for the 2023-2024 school year.

Thank you to all parents who are willing to fill these roles!

## CTE MEMBERSHIP TOOLKIT



Have you signed up for the optional [Cherry Tree Directory](#)?

If you are already a member, please update your child's teacher!

Once you create a Membership Toolkit account, you will have access to the directory and upcoming calendar events.

This is a free, optional directory for all Cherry Tree families.

# HOLIDAY LIGHTS RECYCLING DRIVE

## HOLIDAY LIGHTS RECYCLING DRIVE

Recycle old,  
broken and unused  
strings of lights!

This environmentally-friendly  
program offers an alternative to  
sending strands of holiday lights  
to a landfill.

SPONSORED BY:

 **Carmel Utilities**



White's **ACE** Hardware  
and Garden Center  
Great Service - Great Price

Drop-off at all Carmel Clay Schools  
**STARTING: MONDAY, NOVEMBER 20**

Collection ends on Wednesday, December 20

# JOIN THE CCS TEAM



**CARMEL CLAY  
SCHOOLS**  
TOGETHER WE ACHIEVE

## JOIN OUR TEAM

### SUBSTITUTE TEACHERS

- **Work in a professional environment with a flexible schedule you control**
- **Positively impact the education of students in your own community**
- **Have the ability to select your preferred school site**
- **Daily Rate is \$80- \$90**



For more information, contact Kelli Hackett at  
[khackett@ccs.k12.in.us](mailto:khackett@ccs.k12.in.us) or (317) 844-9961.



Visit our website

[www.ccs.k12.in.us](http://www.ccs.k12.in.us)

**APPLY HERE** [WWW.APPLITRACK.COM/CCS/ONLINEAPP/](http://WWW.APPLITRACK.COM/CCS/ONLINEAPP/)

# ASCENSION CARMEL CLAY SCHOOLS STUDENT THERAPY SERVICES

Ascension behavioral health partners with Carmel Clay Schools to provide on-site counseling services and skills training to children and families. Services are provided all year (including school and summer breaks).



**Ascension**



**Parents can call Ascension directly at 317-338-4951 to register and schedule your child with one of our licensed school-based counselors.**

**Ascension therapy services are administered through Ascension Stress Center and billed to the family's insurance. Financial assistance options are also available.**

# EASY, NO COST WAYS TO SUPPORT CHERRY TREE



## Cherry Tree PTO is thrilled to announce a fundraising opportunity with Shutterfly.

With their help, we've created a custom online storefront where you can shop the extensive Shutterfly collection, and for every purchase made, Shutterfly will donate 8% to our Organization. Plus, you can even use applicable Shutterfly discount codes!

Please feel free to share this website with friends and family!

<http://cherrytreepto.shutterflystorefront.com/>



## Kroger has a community rewards program!

Log in to your Kroger account and choose Community Rewards to add Cherry Tree Elementary PTO from the list of organizations.

Kroger donates a percentage of your spending to our school.

This is an easy no-cost way to support Cherry Tree!  
Register for these programs today!



# CHERRY TREE REMINDERS



## PARKING

A new city ordinance now restricts using neighborhood streets near school property as a school drop off alternative. If you are using a car to get children to/from school, please follow the procedure to bring them in/pick up on school property in the lot to the east of the school/facing Hazel Dell Pkwy.



## CARPOOL

We do our best each day to keep the line moving in an efficient way. You can help by having students ready to exit the car upon arrival, pulling all the way down in the morning to allow more cars to drop off and by having all students exit the passenger side of the car for safety. Thank you for your partnership in helping us welcome and safely deliver home 700+ students each day.



## CHROMEBOOKS

Please remember to charge your Chromebooks every night! They are a very important part of our daily routine and need to be charged and ready to go at the beginning of each day. In addition to being charged it is very important they are brought to school each day. Unfortunately, we will no longer be able to offer loaner computers to students who forget them at home.

\*Also, please remind your students to treat them with special care. We have seen an increased number of broken devices, and we are very limited in our inventory of replacement Chromebooks.



## ATTENDANCE

Cherry Tree Elementary is now using School Dismissal Manager to report absences (both in advance and same-day), late arrivals, and appointments. This online tool is preferred to phone calls. Visit [www.schooldismissalmanager.com](http://www.schooldismissalmanager.com).



## SUPPORT CHERRY TREE

Box Tops are a simple way to support Cherry Tree! Just download the Box Tops for Education App and scan your grocery receipts after you shop! Box Tops donates \$0.10 for each participating product you buy and there are always new bonus box tops opportunities! Having trouble remembering to scan your receipts? Set a customized scan reminder through the app that fits your shopping schedule!

Kroger has a community rewards program as well! Log into your Kroger account and choose Community Rewards to add the Cherry Tree Elementary PTO from the list of organizations. Kroger donates a percentage of your spending to our school.

These are simple ways for friends and families to support the Cherry Tree PTO at **NO COST** and they are an integral part of our fundraising efforts. Thanks for your support!



## STUDENT BELONGINGS

Be sure to label your student's personal belongings, such as coats/jackets, water bottles, lunch boxes, etc. If an item is missing, please be sure to have your student check the Lost and Found!

