

LEA Name : Kutztown Area SD
Address : 251 Long Lane
Kutztown, PA 19530

County : Berks
AUN Number : 114064003
LEA Type : SD

Annual Financial Report Accuracy Certification Statement

For Fiscal Year Ending

6/30/2023

Pennsylvania Department of Education
&

Office of Comptroller Operations

PDE-2056: Intermediate Unit

PDE-2057: School District, AVTS/CTC, Charter School,
and Special Program Jointure

CERTIFICATION: By signing this page I agree that the electronic data submitted is a complete and accurate statement of the financial operations and status of the local education agency for the fiscal year. It has been prepared in accordance with generally accepted accounting principles and established Commonwealth of PA reporting guidelines.

Chief School Administrator Signature

Date

Board Secretary Signature

Date

Elizabeth Siteman

(484)641-5526 Ext :

Contact Person

Contact Person Telephone Number

esiteman@kasd.org

Contact Person E-mail Address

Contact Person Fax Number

Audit Certification
Annual Financial Report:
For Fiscal Year Ending **6/30/2023**
(Pursuant to PA School Code Section 218(b))

LEA Name : Kutztown Area SD
AUN Number : 114064003
County : Berks

Audit Certification Due:
12/31/2023

This certification is applicable to the Annual Financial Report data submitted through the Consolidated Financial Reporting System (CFRS).

CERTIFICATION: By signing this page I agree that the financial statements of the school have been properly audited as noted above pursuant to Article XXIV, and in the auditor's professional opinion, the Annual Financial Report (PDE-2057) submitted through CFRS is materially consistent with the audited financial statements.

Chief School Administrator

Signature
11/29/23
Date

Board Secretary

Signature
11.29.2023
Date

Elizabeth Siteman

(484)641-5526

Ext :

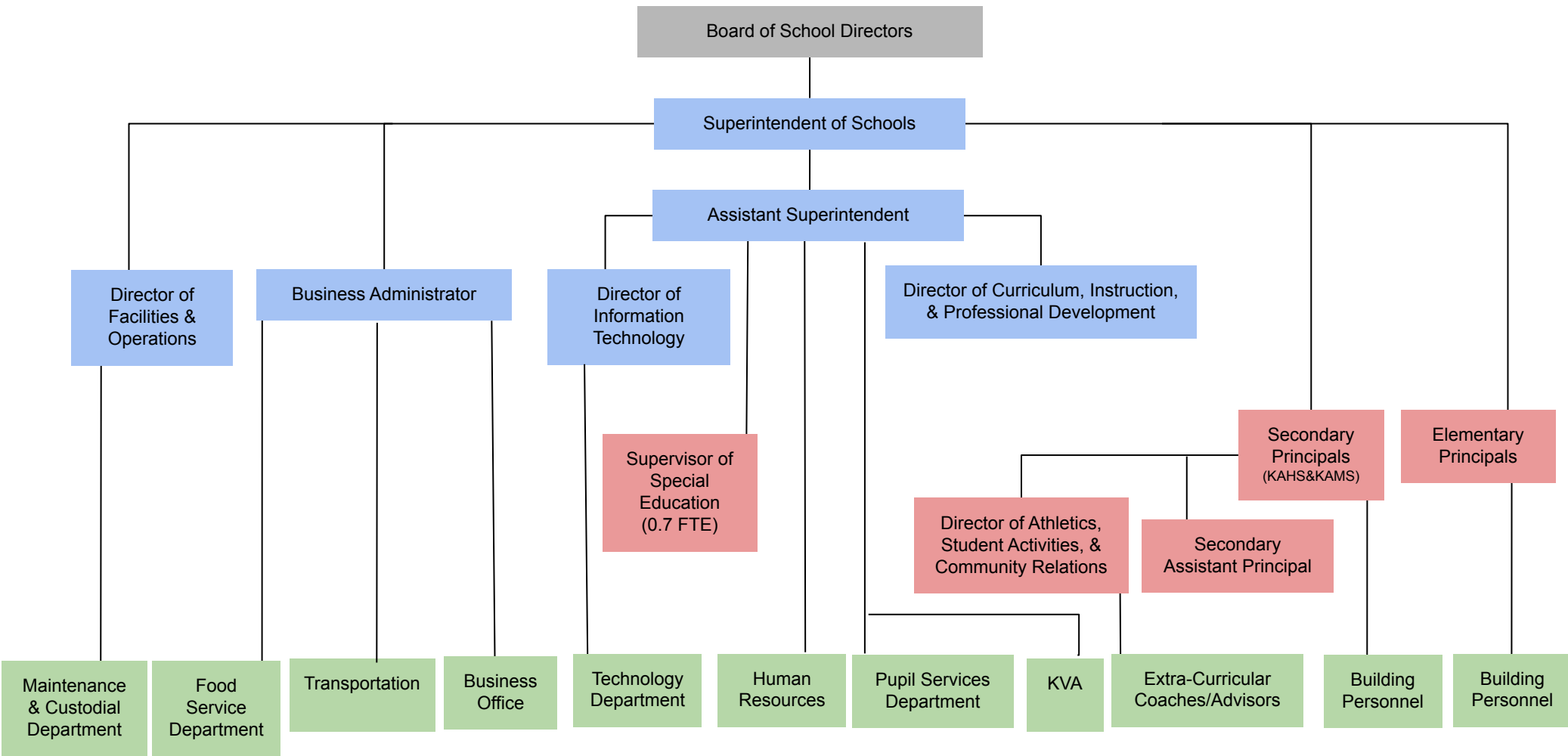
Contact Person

Contact Person Telephone Number

esiteman@kasd.org

Contact Person E-mail Address

Contact Person Fax Number



Kutztown Area School District

Capitalization Policy

Book	Policy Manual
Section	600 Finances
Title	GASB Statement 34
Code	622
Status	Active
Adopted	March 18, 2002
Last Revised	October 18, 2010

Purpose

The Board recognizes the need to implement the required accounting and financial reporting standards stipulated by the Pennsylvania Department of Education.

The primary objectives of implementing the GASB Statement 34 are to assure compliance with state requirements, and properly account for both the financial and economic resources of the district, specifically:

1. New entity-wide financial statements reflecting the overall financial position of the district.
2. Long-term focus for school district activities.
3. Narrative overview and analysis.
4. Information on major funds.
5. Expanded budgetary reporting.

Definition

A **capitalized asset** shall be any asset acquired by donation or purchase that has a useful life of longer than one (1) year or extends the life of another capitalized asset or increases its value and meets a specific dollar threshold.

Authority

Participation of the school district in any such activity shall be in accordance with Board policy.[1][2]

Delegation of Responsibility

The responsibility to coordinate the compilation and preparation of all information necessary to implement this policy in accordance with district administrative regulations is delegated to the Business Administrator, in cooperation with the local independent auditor.

The designated individual shall be responsible for implementing the necessary procedures to establish and maintain a fixed asset inventory, including depreciation schedules. Depreciation shall be computed on a straight-line basis over the estimated useful lives of the assets, using an averaging convention. Periodically, management shall evaluate the estimated useful life of each depreciable asset to determine if revision of such estimate is required. Normal maintenance and repairs shall be charged to expense as incurred; major renewals and betterments that materially extend the life or increase the value of the asset shall be capitalized. A schedule of accumulated depreciation shall be

consistent from year to year. The basis for depreciation, including groups of assets and useful lives, shall be in writing and submitted for review to the Board.

The Business Administrator shall prepare the required Management Discussion and Analysis (MD&A). The MD&A shall be in the form required by GASB Statement 34 and shall be submitted to the Board for approval, prior to publication.

Prior to submission of the MD&A for Board approval, the district's independent auditors shall review the MD&A, in accordance with SAS No. 52, "Required Supplementary Information".

Guidelines

In order to associate debt with acquired assets and to avoid net asset deficits, any asset that has been acquired with debt proceeds shall be capitalized, regardless of the cost of the asset. The asset life of these assets shall be considered relative to the time of the respective debt amortizations.

All capitalized assets shall be recorded at historical cost at acquisition date or estimated cost if acquired prior to the date of the initial inventory. Any donated capital asset shall be recorded at the date of donation using the fair market value of the item at that date.

A dollar threshold for each asset shall be set at an appropriate level. Administration should periodically review these levels with assistance from the local independent auditor and make any modifications necessary.

The capitalization threshold shall be set at a level that will capture at least eighty percent (80%) of all fixed assets.

The assets listed below do not normally individually meet capitalization threshold criteria:

1. Library books.
2. Classroom texts.
3. Computer equipment.
4. Classroom furniture.

These asset category costs shall be capitalized and depreciated as groups when that group's acquisition cost exceeds the capitalization threshold in any given fiscal year.

For group asset depreciation purposes, the estimated useful life of the group may be based on the weighted average or simple average of the useful life of individual items, or on an assessment of the life of the group as a whole. Periodically, the district shall review the estimated life of groups of assets and adjust the remaining depreciation life of the group.

Assets that fall below the capitalization threshold for GASB 34 reporting purposes may still be significant for insurance, warranty service, and obsolescence/replacement policy tracking purposes. The district may record and maintain these non-GASB 34 asset inventories in subsidiary ledgers.

Legal

1. 24 P.S. 218

2. 24 P.S. 613

Governmental Accounting Standards Board, Statement No. 34

Val Number	Description	Justification
50278	<p>SOIN: Current Year AFR amount must equal Prior Year AFR amount. Note: If the variance is due to a Subscription-Based IT Arrangement (SBITA) existing prior to GASB 96 implementation that is now being included on the SOIN as Leases & Other Right-to-Use Arrangements "Amount at FY Start", please note this within the justification.</p> <p>SOIN, Beg Bal, Govt Funds Leases & Other Right to Use Arrangements: \$54,672.00</p> <p>PY Ending Bal, Govt Funds Leases & Other Right to Use Arrangements: \$0.00</p>	<p>Beginning balance due to the GASB 96 standard being implemented effective 7/1/22.</p>
50279	<p>SOIN: Current Year AFR amount must equal Prior Year AFR amount.</p> <p>SOIN, Beg Bal, Govt Funds Extended Term Financing Agreements: \$461,750.00</p> <p>PY Ending Bal, Govt Funds Extended Term Financing Agreements: \$0.00</p>	<p>Prior years AFR were missing this line item. Corrected going forward.</p>
50410	<p>SESS - 2140 Psychological Services: SESS Schedule amounts for Special Education vary from prior year by 40% or more. Correct the data or enter a justification.</p> <p>SESS Schedule 2140: \$293,084.25</p> <p>Prior Year SESS Schedule 2140: \$163,524.64</p>	<p>Additional services provided with ESSER funding.</p>
50430	<p>SESS - 2160 Social Work Services: SESS Schedule amounts for Special Education vary from prior year by 40% or more. Correct the data or enter a justification.</p> <p>SESS Schedule 2160: \$22,844.42</p> <p>Prior Year SESS Schedule 2160: \$0.00</p>	<p>Social Work Services added to services provided by the District in 22-23.</p>
50440	<p>SESS - 2260 Instruction and Curriculum Development Services: SESS Schedule amounts for Special Education vary from prior year by 40% or more. Correct the data or enter a justification.</p> <p>SESS Schedule 2260: \$347,704.50</p> <p>Prior Year SESS Schedule 2260: \$62,057.15</p>	<p>Prior year understated due to sub functions not being included in special education calculation.</p>

LEA : 114064003 Kutztown Area SD

Printed 11/30/2023 10:17:30 AM

Amounts Expressed in Whole Dollars		<u>General Fund</u> <u>(10)</u>	<u>Student Sponsored</u> <u>Activity Fund</u> <u>(21)</u>	<u>Public Purpose Trust</u> <u>(27)</u>	<u>Other Compt Approved</u> <u>(28)</u>	<u>Athletic / Activity</u> <u>(29)</u>
Assets And Deferred Outflows Of Resources						
Assets						
0100	Cash and Cash Equivalents	1,305,252	77,380			
0110	Investments	5,335,450				
0120	Taxes Receivable	840,921				
0130	Due From Other Funds					
0141	Due From Other Governments	137,918				
0142	State Revenue Receivable	1,206,353				
0143	Federal Revenue Receivable	825,425				
0145	Other Intergovernmental Revenue Receivable					
0146	Due from Primary Government					
0147	Due from Component Unit					
0150	Other Receivables	158,994				
0170	Inventories					
0180	Prepaid Expenses (Expenditures)	5,955				
0190	Other Current Assets					
Total Assets		\$9,816,268	\$77,380			
0910	Deferred Outflows of Resources					
Total Assets And Deferred Outflows Of Resources		\$9,816,268	\$77,380			

LEA : 114064003 Kutztown Area SD

Printed 11/30/2023 10:17:30 AM

Amounts Expressed in Whole Dollars		<u>Capital Reserve (690.</u> <u>1850)</u> <u>(31)</u>	<u>Capital Reserve (1431)</u> <u>(32)</u>	<u>Other Capital Projects</u> <u>Fund</u> <u>(39)</u>	<u>Debt Service</u> <u>(40)</u>	<u>Permanent</u> <u>(90)</u>
Assets And Deferred Outflows Of Resources						
Assets						
0100	Cash and Cash Equivalents			33,603		
0110	Investments			267,435		
0120	Taxes Receivable					
0130	Due From Other Funds			140,285		
0141	Due From Other Governments					
0142	State Revenue Receivable					
0143	Federal Revenue Receivable					
0145	Other Intergovernmental Revenue Receivable					
0146	Due from Primary Government					
0147	Due from Component Unit					
0150	Other Receivables					
0170	Inventories					
0180	Prepaid Expenses (Expenditures)					
0190	Other Current Assets					
Total Assets				\$441,323		
0910	Deferred Outflows of Resources					
Total Assets And Deferred Outflows Of Resources				\$441,323		

LEA : 114064003 Kutztown Area SD

Printed 11/30/2023 10:17:30 AM

Amounts Expressed in Whole Dollars		<u>Total Governmental</u>
		<u>Funds</u>
Assets And Deferred Outflows Of Resources		
Assets		
0100	Cash and Cash Equivalents	1,416,235
0110	Investments	5,602,885
0120	Taxes Receivable	840,921
0130	Due From Other Funds	140,285
0141	Due From Other Governments	137,918
0142	State Revenue Receivable	1,206,353
0143	Federal Revenue Receivable	825,425
0145	Other Intergovernmental Revenue Receivable	
0146	Due from Primary Government	
0147	Due from Component Unit	
0150	Other Receivables	158,994
0170	Inventories	
0180	Prepaid Expenses (Expenditures)	5,955
0190	Other Current Assets	
Total Assets		\$10,334,971
0910	Deferred Outflows of Resources	
Total Assets And Deferred Outflows Of Resources		\$10,334,971

LEA : 114064003 Kutztown Area SD

Printed 11/30/2023 10:17:30 AM

Amounts Expressed in Whole Dollars		<u>General Fund</u> <u>(10)</u>	<u>Student Sponsored</u> <u>Activity Fund</u> <u>(21)</u>	<u>Public Purpose Trust</u> <u>(27)</u>	<u>Other Compt Approved</u> <u>(28)</u>	<u>Athletic / Activity</u> <u>(29)</u>
Liabilities And Deferred Inflows Of Resources And Fund Balances						
Liabilities						
0400	Due to Other Funds	(62,294)				
0411	Due to Other Governments	46,776				
0412	Due to Primary Government					
0413	Due to Component Unit					
0420	Accounts Payable	252,630				
0430	Contracts Payable					
0440	Current Portion of Long-Term Debt	86,562				
0450	Short-Term Payables					
0461	Accrued Salaries and Benefits	1,581,348				
0462	Payroll Deductions and Withholding	1,467,928				
0480	Unearned Revenues	532,160				
0490	Other Current Liabilities	4,153				
Total Liabilities		\$3,909,263				
0950	Deferred Inflows of Resources					
Fund Balances						
0810	Nonspendable Fund Balance	5,955				
0820	Restricted Fund Balance		77,380			
0830	Committed Fund Balance	3,361,928				
0840	Assigned Fund Balance	201,814				
0850	Unassigned Fund Balance	2,337,308				
Total Fund Balances		\$5,907,005	\$77,380			
Total Liabilities, Deferred Inflows Of Resources And Fund Balances		\$9,816,268	\$77,380			

LEA : 114064003 Kutztown Area SD

Printed 11/30/2023 10:17:30 AM

Amounts Expressed in Whole Dollars		<u>Capital Reserve (690.</u> <u>1850)</u> <u>(31)</u>	<u>Capital Reserve (1431)</u> <u>(32)</u>	<u>Other Capital Projects</u> <u>Fund</u> <u>(39)</u>	<u>Debt Service</u> <u>(40)</u>	<u>Permanent</u> <u>(90)</u>
Liabilities And Deferred Inflows Of Resources And Fund Balances						
Liabilities						
0400	Due to Other Funds					
0411	Due to Other Governments					
0412	Due to Primary Government					
0413	Due to Component Unit					
0420	Accounts Payable			39,015		
0430	Contracts Payable					
0440	Current Portion of Long-Term Debt					
0450	Short-Term Payables					
0461	Accrued Salaries and Benefits					
0462	Payroll Deductions and Withholding					
0480	Unearned Revenues					
0490	Other Current Liabilities					
Total Liabilities				\$39,015		
0950	Deferred Inflows of Resources					
Fund Balances						
0810	Nonspendable Fund Balance					
0820	Restricted Fund Balance			402,308		
0830	Committed Fund Balance					
0840	Assigned Fund Balance					
0850	Unassigned Fund Balance					
Total Fund Balances				\$402,308		
Total Liabilities, Deferred Inflows Of Resources And Fund Balances				\$441,323		

LEA : 114064003 Kutztown Area SD

Printed 11/30/2023 10:17:30 AM

Amounts Expressed in Whole Dollars		<u>Total Governmental</u> <u>Funds</u>
Liabilities And Deferred Inflows Of Resources And Fund Balances		
Liabilities		
0400 Due to Other Funds	(62,294)	
0411 Due to Other Governments	46,776	
0412 Due to Primary Government		
0413 Due to Component Unit		
0420 Accounts Payable	291,645	
0430 Contracts Payable		
0440 Current Portion of Long-Term Debt	86,562	
0450 Short-Term Payables		
0461 Accrued Salaries and Benefits	1,581,348	
0462 Payroll Deductions and Withholding	1,467,928	
0480 Unearned Revenues	532,160	
0490 Other Current Liabilities	4,153	
Total Liabilities	\$3,948,278	
0950 Deferred Inflows of Resources		
Fund Balances		
0810 Nonspendable Fund Balance	5,955	
0820 Restricted Fund Balance	479,688	
0830 Committed Fund Balance	3,361,928	
0840 Assigned Fund Balance	201,814	
0850 Unassigned Fund Balance	2,337,308	
Total Fund Balances	\$6,386,693	
Total Liabilities, Deferred Inflows Of Resources And Fund Balances	\$10,334,971	

Amounts Expressed in Whole Dollars	<u>General Fund</u> <u>(10)</u>	<u>Student Sponsored</u> <u>Activity Fund</u> <u>(21)</u>	<u>Public Purpose Trust</u> <u>(27)</u>	<u>Other Compt Approved</u> <u>(28)</u>	<u>Athletic / Activity</u> <u>(29)</u>
Revenues					
6000 Revenue from Local Sources	24,462,348	313,852			
7000 Revenue from State Sources	10,202,521				
8000 Revenue from Federal Sources	1,794,849				
Total Revenues	\$36,459,718	\$313,852			
Expenditures					
1000 Instruction	21,126,181				
2000 Support Services	12,460,716				
3000 Operation of Non-Instructional Services	975,368	321,065			
4000 Facilities Acquisition, Construction and Improvement Services	66,468				
5110 Debt Service	2,442,265				
5130 Refund of Prior Year Revenues / Receipts					
5140 Leases and Other Right-to-Use Arrangements	31,819				
Total Expenditures	\$37,102,817	\$321,065			
Excess (Deficiency) Of Revenues Over Expenditures	(\$643,099)	(\$7,213)			
Other Financing Sources (Uses)					
9110 Face Value of Bonds Issued					
9120 Proceeds from Refunding of Bonds					
9130 Bond Premiums					
9200 Proceeds from Extended Term Financing, Leases, and Other Right-to-Use Arrangements	163,224				
9300 Interfund Transfers - IN	33,598				
9400 Sale of or Compensation for Loss of Fixed Assets	15,255				
9710 Transfers from Component Units					
9720 Transfers from Primary Governments					
9910 Other Financing Sources Not Listed in the 9000 Series					
9990 Insurance Recoveries					
5120 Debt Service – Refunded Bonds					
5150 Bond Discounts					
5200 Interfund Transfers – Out	374,526				
5300 Transfers Out to Component Units/Primary Governments					
Total Other Financing Sources (Uses)	(\$162,449)				

Amounts Expressed in Whole Dollars		<u>Capital Reserve (690.</u> <u>1850)</u> <u>(31)</u>	<u>Capital Reserve (1431)</u> <u>(32)</u>	<u>Other Capital Projects</u> <u>Fund</u> <u>(39)</u>	<u>Debt Service</u> <u>(40)</u>	<u>Permanent</u> <u>(90)</u>
Revenues						
6000	Revenue from Local Sources			10,559		
7000	Revenue from State Sources					
8000	Revenue from Federal Sources					
Total Revenues				\$10,559		
Expenditures						
1000	Instruction					
2000	Support Services			308,980		
3000	Operation of Non-Instructional Services					
4000	Facilities Acquisition, Construction and Improvement Services			290,328		
5110	Debt Service					
5130	Refund of Prior Year Revenues / Receipts					
5140	Leases and Other Right-to-Use Arrangements					
Total Expenditures				\$599,308		
Excess (Deficiency) Of Revenues Over Expenditures				(\$588,749)		
Other Financing Sources (Uses)						
9110	Face Value of Bonds Issued					
9120	Proceeds from Refunding of Bonds					
9130	Bond Premiums					
9200	Proceeds from Extended Term Financing, Leases, and Other Right-to-Use Arrangements					
9300	Interfund Transfers - IN			372,785		
9400	Sale of or Compensation for Loss of Fixed Assets					
9710	Transfers from Component Units					
9720	Transfers from Primary Governments					
9910	Other Financing Sources Not Listed in the 9000 Series					
9990	Insurance Recoveries					
5120	Debt Service – Refunded Bonds					
5150	Bond Discounts					
5200	Interfund Transfers – Out					
5300	Transfers Out to Component Units/Primary Governments					
Total Other Financing Sources (Uses)				\$372,785		

Amounts Expressed in Whole Dollars		<u>Total Governmental Funds</u>
Revenues		
6000 Revenue from Local Sources		24,786,759
7000 Revenue from State Sources		10,202,521
8000 Revenue from Federal Sources		1,794,849
Total Revenues		\$36,784,129
Expenditures		
1000 Instruction		21,126,181
2000 Support Services		12,769,696
3000 Operation of Non-Instructional Services		1,296,433
4000 Facilities Acquisition, Construction and Improvement Services		356,796
5110 Debt Service		2,442,265
5130 Refund of Prior Year Revenues / Receipts		
5140 Leases and Other Right-to-Use Arrangements		31,819
Total Expenditures		\$38,023,190
Excess (Deficiency) Of Revenues Over Expenditures		(\$1,239,061)
Other Financing Sources (Uses)		
9110 Face Value of Bonds Issued		
9120 Proceeds from Refunding of Bonds		
9130 Bond Premiums		
9200 Proceeds from Extended Term Financing, Leases, and Other Right-to-Use Arrangements		163,224
9300 Interfund Transfers - IN		406,383
9400 Sale of or Compensation for Loss of Fixed Assets		15,255
9710 Transfers from Component Units		
9720 Transfers from Primary Governments		
9910 Other Financing Sources Not Listed in the 9000 Series		
9990 Insurance Recoveries		
5120 Debt Service – Refunded Bonds		
5150 Bond Discounts		
5200 Interfund Transfers – Out		374,526
5300 Transfers Out to Component Units/Primary Governments		
Total Other Financing Sources (Uses)		\$210,336

Amounts Expressed in Whole Dollars		<u>General Fund</u> <u>(10)</u>	<u>Student Sponsored</u> <u>Activity Fund</u> <u>(21)</u>	<u>Public Purpose Trust</u> <u>(27)</u>	<u>Other Compt Approved</u> <u>(28)</u>	<u>Athletic / Activity</u> <u>(29)</u>
Special And Extraordinary Items						
9920 Special Items – Gains						
9930 Extraordinary Items – Gains						
5520 Special Items – Losses						
5530 Extraordinary Items – Losses						
Net Change In Fund Balances		(\$805,548)	(\$7,213)			
Fund Balance						
0001 Fund Balance - Beginning of Fiscal Year		6,712,554	84,594			
Fund Balance - End Of Year		\$5,907,006	\$77,381			

Amounts Expressed in Whole Dollars		<u>Capital Reserve (690.</u> <u>1850)</u> <u>(31)</u>	<u>Capital Reserve (1431)</u> <u>(32)</u>	<u>Other Capital Projects</u> <u>Fund</u> <u>(39)</u>	<u>Debt Service</u> <u>(40)</u>	<u>Permanent</u> <u>(90)</u>
Special And Extraordinary Items						
9920	Special Items – Gains					
9930	Extraordinary Items – Gains					
5520	Special Items – Losses					
5530	Extraordinary Items – Losses					
Net Change In Fund Balances				(\$215,964)		
Fund Balance						
0001	Fund Balance - Beginning of Fiscal Year			618,272		
Fund Balance - End Of Year				\$402,308		

Amounts Expressed in Whole Dollars		<u>Total Governmental Funds</u>
Special And Extraordinary Items		
9920	Special Items – Gains	
9930	Extraordinary Items – Gains	
5520	Special Items – Losses	
5530	Extraordinary Items – Losses	
Net Change In Fund Balances		(\$1,028,725)
Fund Balance		
0001	Fund Balance - Beginning of Fiscal Year	7,415,420
Fund Balance - End Of Year		\$6,386,695

LEA : 114064003 Kutztown Area SD

Printed 11/30/2023 10:18:05 AM

Amounts Expressed in Whole Dollars	<u>Food Service</u> <u>(51)</u>	<u>Child Care</u> <u>Operations</u> <u>(52)</u>	<u>Other Enterprise</u> <u>(58)</u>	<u>TOTAL</u>	<u>Internal Service</u> <u>(60)</u>
Assets And Deferred Outflows Of Resources					
Current Assets					
0100 Cash and Cash Equivalents	659,446			659,446	
0110 Investments					
0130 Due From Other Funds					
0141 Due From Other Governments					
0142 State Revenue Receivable					
0143 Federal Revenue Receivable					
0146 Due from Primary Government					
0147 Due from Component Unit					
0150 Other Receivables					
0170 Inventories	22,104			22,104	
0180 Prepaid Expenses (Expenditures)					
0190 Other Current Assets					
Total Current Assets	\$681,550			\$681,550	
Noncurrent Assets					
0211 Land					
0212 Site Improvements (Net)					
0220 Buildings and Building Improvements (Net)					
0230 Tangible Property and Intangible Right-To-Use Assets (Net)	167,145			167,145	
0250 Construction in Progress					
0260 Long Term Prepayments					
0290 Other Noncurrent Assets					
Total Noncurrent Assets	\$167,145			\$167,145	
0910 Deferred Outflows of Resources	189,638			189,638	
Total Assets And Deferred Outflows Of Resources	\$1,038,333			\$1,038,333	

LEA : 114064003 Kutztown Area SD

Printed 11/30/2023 10:18:05 AM

Amounts Expressed in Whole Dollars	<u>Food Service</u> <u>(51)</u>	<u>Child Care</u> <u>Operations</u> <u>(52)</u>	<u>Other Enterprise</u> <u>(58)</u>	<u>TOTAL</u>	<u>Internal Service</u> <u>(60)</u>
Liabilities And Deferred Inflows Of Resources And Net Position					
Current Liabilities					
0400 Due to Other Funds	202,579			202,579	
0411 Due to Other Governments					
0413 Due to Component Unit					
0420 Accounts Payable					
0430 Contracts Payable					
0440 Current Portion of Long-Term Debt					
0450 Short-Term Payables					
0461 Accrued Salaries and Benefits					
0462 Payroll Deductions and Withholding					
0480 Unearned Revenues					
0490 Other Current Liabilities	3,510			3,510	
Total Current Liabilities	\$206,089			\$206,089	
Noncurrent Liabilities					
0510 Bonds Payable					
0520 Extended-Term Financing Agreements Payable					
0530 Lease and Other Right-To-Use Obligations					
0540 Accumulated Compensated Absences					
0550 Authority Lease Obligations					
0560 Other Post-Employment Benefits (OPEB)	39,859			39,859	
0570 Net Pension Liability	677,499			677,499	
0599 Other Noncurrent Liabilities					
Total Noncurrent Liabilities	\$717,358			\$717,358	
Total Liabilities	\$923,447			\$923,447	
0950 Deferred Inflows of Resources	98,216			98,216	
Net Position					
0791 Net Investment in Capital Assets	167,145			167,145	
0008 Restricted Net Position (0792 – 0798)					
0799 Unrestricted Net Position	(150,475)			(150,475)	
Total Net Position	\$16,670			\$16,670	
Total Liabilities And Deferred Inflows Of Resources And Net Position	\$1,038,333			\$1,038,333	

Amounts Expressed in Whole Dollars	<u>Food Service</u> <u>(51)</u>	<u>Child Care Operations</u> <u>(52)</u>	<u>Other Enterprise</u> <u>(58)</u>	<u>TOTAL</u>	<u>Internal Service</u> <u>(60)</u>
Operating Revenues					
6600 Food Service Revenue	292,162			292,162	
0071 Charges for Services					
0072 Other Operating Revenue					
Total Operating Revenues	\$292,162			\$292,162	
Operating Expenses					
100 Personnel Services – Salaries	269,289			269,289	
200 Personnel Services – Employee Benefits	115,222			115,222	
300 Purchased Professional and Technical Services	3,246			3,246	
400 Purchased Property Services	14,337			14,337	
500 Other Purchased Services	1,792			1,792	
600 Supplies	385,361			385,361	
740 Depreciation	20,503			20,503	
770 Amortization Expense					
810 Dues and Fees	597			597	
880 Refunds of Prior Years' Receipts					
890 Miscellaneous Expenditures					
Total Operating Expenses	\$810,347			\$810,347	
Operating Income (Loss)	(\$518,185)			(\$518,185)	
Non Operating Revenues (Expenses)					
6500 Earnings on Investments	13,279			13,279	
6830 Federal Revenue from Intermediary Sources					
6920 Contributions and Donations from Private Sources					
6930 Gains or Losses on Sale of Fixed Assets	1,517			1,517	
6991 Refunds of a Prior Year Expenditure					
7000 Revenue from State Sources	112,436			112,436	
8000 Revenue from Federal Sources	496,131			496,131	
9990 Insurance Recoveries					
820 Claims and Judgments Against the LEA					
830 Interest					
TOTAL Non Operating Revenues (Expenses)	\$623,363			\$623,363	
Income (Loss) Before Contributions And Transfers	\$105,178			\$105,178	

Amounts Expressed in Whole Dollars	<u>Food Service</u> <u>(51)</u>	<u>Child Care Operations</u> <u>(52)</u>	<u>Other Enterprise</u> <u>(58)</u>	<u>TOTAL</u>	<u>Internal Service</u> <u>(60)</u>
Contributions, Transfers, and Special and Extraordinary Items					
5200 Interfund Transfers – Out	33,598			33,598	
5300 Transfers Out to Component Units/Primary Governments					
5520 Special Items – Losses					
5530 Extraordinary Items – Losses					
9300 Interfund Transfers - IN	1,741			1,741	
9500 Capital Contributions					
9700 Transfers IN From Component Units/Primary Governments					
9920 Special Items – Gains					
9930 Extraordinary Items – Gains					
Change In Net Position	\$73,321			\$73,321	
0002 Net Position - Beginning of Fiscal Year	(56,652)			(56,652)	
0003 Accounting Changes / Residual Equity Transfers					
Net Position - End Of Year	\$16,669			\$16,669	

LEA : 114064003 Kutztown Area SD

Printed 11/30/2023 10:18:38 AM

Amounts Expressed in Whole Dollars		<u>Food Service</u> <u>(51)</u>	<u>Child Care Operations</u> <u>(52)</u>	<u>Other Enterprise</u> <u>(58)</u>	<u>TOTAL</u>	<u>Internal Service(60)</u>
Cash Flows From Operating Activities						
0011	Cash Receipts From Users	279,841			279,841	
0012	Cash Receipts From Assessments Made to Other Funds					
0013	Cash Receipts From Earnings on Investments					
0014	Cash Receipts From Other Operating Revenue					
0015	Cash Payments To Employees For Services	268,186			268,186	
0016	Cash Payments For Insurance Claims					
0017	Cash Payments To Suppliers For Goods and Services	337,287			337,287	
0018	Cash Payments For Other Operating Expenses					
Net Cash Provided By (Used For) Operating Activities		(\$325,632)			(\$325,632)	
Cash Flows From Non-Capital Financing Activities						
0021	Receipts From Local Sources - 6000					
0022	Receipts From State Sources - 7000	112,466			112,466	
0023	Receipts From Federal Sources -8000	435,448			435,448	
0024	Notes and Loans Received (Repaid)					
0025	Interest Paid on Notes/Loans - 5100-830					
0026	Operating Transfers In (Out)/Residual Equity Trans	1,741			1,741	
0027	Operating Transfers In (Out) Primary Government / Comp Unit	(33,598)			(33,598)	
0028	Receipts From Refund of Prior Year Expenditures - 6991					
0029	Special and Extraordinary Gains (losses)					
0030	Receipts from Insurance Recoveries -9990					
Net Cash Prov By (Used for) Non-Capital Financing Activities		\$516,057			\$516,057	
Cash Flows From Capital and Related Financing Activities						
0031	Payments For Fac Acq, Const, and Imp - 4000	(9,624)			(9,624)	
0032	Gain / (Loss) on Sale of Fixed Assets - 6930	2,107			2,107	
0033	Proceeds From Extended Term Financing - 9200					
0034	Principal Paid on Financing Agreements					
0035	Interest Paid on Financing Agreements - 5100-830					
0036	(Inc) Dec in Contributed Capital					
Net Cash Prov By (Used for) Capital and Related Financing Activities		(\$7,517)			(\$7,517)	
Cash Flows From Investing Activities						
0041	Earnings on Investments - 6500	13,278			13,278	
0042	Purchase of Inv Securities / Deposits to Inv Pools					
0043	Receipts From Investment Pool Withdrawals					
0044	Proceeds from Sale and Maturity of Inv Securities					

LEA : 114064003 Kutztown Area SD

Printed 11/30/2023 10:18:38 AM

0045 Loans Received (Paid)

Net Cash Prov By (Used for) Investing Activities	\$13,278	\$13,278
--	----------	----------

LEA : 114064003 Kutztown Area SD

Printed 11/30/2023 10:18:38 AM

	<u>Food Service</u> <u>(51)</u>	<u>Child Care Operations</u> <u>(52)</u>	<u>Other Enterprise</u> <u>(58)</u>	<u>TOTAL</u>	<u>Internal Service</u> <u>(60)</u>
Net Increase (Decrease) in Cash Flows	196,186			196,186	
0004 Cash and Cash Equivalents Beginning of Year	463,260			463,260	
Cash and Cash Equivalents at Year End	\$659,446			\$659,446	
<hr/>					
Reconciliation of Operating Income (Loss) To Net Cash Provided by (Used For) Operating Activities					
0005 Operating Income (Loss) per REP	(518,185)			(518,185)	
Adjustments					
0051 Depreciation and Net Amortization	20,503			20,503	
0052 Provision for Uncollectible Accounts					
0053 Other Adjustments	61,462			61,462	
Effect of Changes in Assets, Liabilities, Deferred Outflows and Deferred Inflows					
0054 (Inc) Dec In Accounts Receivable (0120-0150)					
0055 Advances to Other Funds					
0056 (Inc) Dec in Inventories (0170)	6,582			6,582	
0057 (Inc) Dec in Prepaid Expenses (0180)					
0058 (Inc) Dec in Other Current or Noncurrent Assets					
0064 Deferred Outflows (0910)	(51,195)			(51,195)	
0059 Inc (Dec) in Accounts Payable (0400-0450)					
0060 Inc (Dec) in Accrued Salaries/Benefits (0461)					
0065 Inc (Dec) in Net Pension Liabilities (0570)	162,857			162,857	
0066 Inc (Dec) in Other Postemp Benefit Oblig (0560)	(12,957)			(12,957)	
0061 Inc (Dec) in Payroll Deductions/Withholding (0462)					
0062 Inc (Dec) in Unearned Revenue (0480)	(12,321)			(12,321)	
0063 Inc (Dec) in Other Current or Noncurrent Liabilities	180,825			180,825	
0067 Deferred Inflows (0950)	(163,203)			(163,203)	
Total Adjustments	\$192,553			\$192,553	
Cash Provided By (Used for) Total	(\$325,632)			(\$325,632)	
<hr/>					

COMBINED STATEMENT OF CASH FLOWS
SCHEDULE OF NONCASH INVESTING, CAPITAL, AND FINANCING ACTIVITIES

Explanation of Transaction and Balance Sheet Effect	Amount
Donated commodities used	61,462
Total	\$61,462

LEA : 114064003 Kutztown Area SD

General Fund (10)

Printed 11/30/2023 10:18:41 AM

Page - 1 of 4

	Revenue Reported In Current Year	Current Year Tax Accrual	Prior Year Tax Accrual	Taxes Collected In Current Year
Revenue from Local Sources				
6111 Current Real Estate Taxes	20,278,082.83			20,278,082.83
6112 Interim Real Estate Taxes	62,861.49			62,861.49
6113 Public Utility Realty Taxes	22,849.54			22,849.54
6114 Payments in Lieu of Current Taxes - State / Local	12,325.32			12,325.32
6120 Current Per Capita Taxes, Section 679	33,336.60			33,336.60
6141 Current Act 511 Per Capita Taxes	33,336.60			33,336.60
6143 Current Act 511 Local Services Taxes	37,231.23			37,231.23
6151 Current Act 511 Earned Income Taxes	2,083,554.78			2,083,554.78
6153 Current Act 511 Real Estate Transfer Taxes	299,655.98			299,655.98
6154 Current Act 511 Amusement Taxes	56,441.38			56,441.38
6411 Delinquent Real Estate Taxes	502,903.59			502,903.59
6420 Delinquent Per Capita Taxes, Section 679	7,066.58			7,066.58
6440 Delinquent Local Enabling Taxes - Flat Rate Assessments	7,066.62			7,066.62
6500 Earnings on Investments	368,175.48			
6700 Revenues from LEA Activities	58,944.23			
6832 Federal IDEA Revenue Received as Pass Through	262,497.27			
6910 Rentals	44,988.50			
6920 Contributions and Donations from Private Sources	78,723.38			
6942 Summer School Tuition	600.00			
6944 Receipts from Other LEAs in Pennsylvania - Education	3,404.64			
6991 Refunds of a Prior Year Expenditure	11.50			
6999 Other Revenues Not Specified Above	208,290.28			
TOTAL Revenue from Local Sources	\$24,462,347.82			\$23,436,712.54

	Revenue Reported In Current Year			
<u>Revenue from State Sources</u>				
7111 Basic Education Funding-Formula	4,006,869.98			
7112 Basic Education Funding-Social Security	534,758.16			
7160 Tuition for Orphans Subsidy	21,332.87			
7220 Vocational Education	43,469.31			
7271 Special Education funds for School-Aged Pupils	1,048,169.40			
7311 Pupil Transportation Subsidy	765,293.77			
7312 Nonpublic and Charter School Pupil Transportation Subsidy	43,120.00			
7320 Rental and Sinking Fund Payments / Building Reimbursement Subsidy	10,867.01			
7330 Health Services (Medical, Dental, Nurse, Act 25)	25,669.66			
7340 State Property Tax Reduction Allocation	769,743.67			
7361 School Safety and Security Grants	64,460.01			
7362 School Mental Health & Safety and Security Grants	91,666.70			
7505 Ready to Learn Block Grant	140,805.00			
7599 Other State Revenue Not Listed Elsewhere in the 7000 Series	2,985.10			
7820 State Share of Retirement Contributions	2,633,310.51			
TOTAL Revenue from State Sources	\$10,202,521.15			

	Revenue Reported In Current Year			
<u>Revenue from Federal Sources</u>				
8514 Title I - Improving the Academic Achievement of the Disadvantaged	262,477.28			
8515 Title II - Preparing, Training, and Recruiting High Quality Teachers and Principals	50,456.75			
8516 Title III - Language Instruction for English Learners and Immigrant Students	5,860.30			
8517 Title IV - 21st Century Schools	17,010.84			
8743 ESSER II - Elementary and Secondary School Emergency Relief Fund	563,183.34			
8744 ARP ESSER - Elementary and Secondary School Emergency Relief Fund	615,686.32			
8751 ARP ESSER Learning Loss	56,471.50			
8752 ARP ESSER Summer Programs	20,145.65			
8753 ARP ESSER Afterschool Programs	61.53			
8810 School-Based Access Medicaid Reimbursement Program (SBAP) Reimbursements (Access)	195,595.00			
8820 Medical Assistance Reimbursement for Administrative Claiming (Quarterly) Program	7,900.84			
TOTAL Revenue from Federal Sources	\$1,794,849.35			

Revenue Reported In Current Year				
<u>Other Financing Sources</u>				
9220	Leases and Other Right-to-Use Arrangements	45,175.78		
9290	Other Extended-Term Financing Proceeds	118,047.80		
9350	Enterprise Fund Transfers	33,597.60		
9400	Sale of or Compensation for Loss of Fixed Assets	15,255.00		
TOTAL Other Financing Sources		\$212,076.18		
TOTAL FROM ALL SOURCES		\$36,671,794.50		\$23,436,712.54

LEA : 114064003 Kutztown Area SD

Printed 11/30/2023 10:18:43 AM

	<u>General Fund (10)</u>	<u>Student Sponsored Activity Fund (21)</u>	<u>Public Purpose Trust (27)</u>	<u>Other Compt Approved (28)</u>	<u>Athletic / Activity (29)</u>	<u>Capital Reserve (690, 1850) (31)</u>
6000 Revenue from Local Sources						
6111 Current Real Estate Taxes	20,278,082.83					
6112 Interim Real Estate Taxes	62,861.49					
6113 Public Utility Realty Taxes	22,849.54					
6114 Payments in Lieu of Current Taxes - State / Local	12,325.32					
6120 Current Per Capita Taxes, Section 679	33,336.60					
6141 Current Act 511 Per Capita Taxes	33,336.60					
6143 Current Act 511 Local Services Taxes	37,231.23					
6151 Current Act 511 Earned Income Taxes	2,083,554.78					
6153 Current Act 511 Real Estate Transfer Taxes	299,655.98					
6154 Current Act 511 Amusement Taxes	56,441.38					
6411 Delinquent Real Estate Taxes	502,903.59					
6420 Delinquent Per Capita Taxes, Section 679	7,066.58					
6440 Delinquent Local Enabling Taxes - Flat Rate Assessments	7,066.62					
6500 Earnings on Investments	368,175.48	293.12				
6700 Revenues from LEA Activities	58,944.23					
6832 Federal IDEA Revenue Received as Pass Through	262,497.27					
6910 Rentals	44,988.50					
6920 Contributions and Donations from Private Sources	78,723.38					
6942 Summer School Tuition	600.00					
6944 Receipts from Other LEAs in Pennsylvania - Education	3,404.64					
6991 Refunds of a Prior Year Expenditure	11.50					
6999 Other Revenues Not Specified Above	208,290.28	313,558.41				
6000 Total Revenue from Local Sources	\$24,462,347.82	\$313,851.53				
7000 Revenue from State Sources						
7111 Basic Education Funding-Formula	4,006,869.98					
7112 Basic Education Funding-Social Security	534,758.16					
7160 Tuition for Orphans Subsidy	21,332.87					
7220 Vocational Education	43,469.31					
7271 Special Education funds for School-Aged Pupils	1,048,169.40					
7311 Pupil Transportation Subsidy	765,293.77					
7312 Nonpublic and Charter School Pupil Transportation Subsidy	43,120.00					
7320 Rental and Sinking Fund Payments / Building Reimbursement Subsidy	10,867.01					
7330 Health Services (Medical, Dental, Nurse, Act 25)	25,669.66					
7340 State Property Tax Reduction Allocation	769,743.67					
7361 School Safety and Security Grants	64,460.01					

LEA : 114064003 Kutztown Area SD

Printed 11/30/2023 10:18:43 AM

	Capital Reserve (1431) (32)	Other Capital Projects Fund (39)	Debt Service (40)	Permanent (90)	Total
6000 Revenue from Local Sources					
6111 Current Real Estate Taxes					20,278,082.83
6112 Interim Real Estate Taxes					62,861.49
6113 Public Utility Realty Taxes					22,849.54
6114 Payments in Lieu of Current Taxes - State / Local					12,325.32
6120 Current Per Capita Taxes, Section 679					33,336.60
6141 Current Act 511 Per Capita Taxes					33,336.60
6143 Current Act 511 Local Services Taxes					37,231.23
6151 Current Act 511 Earned Income Taxes					2,083,554.78
6153 Current Act 511 Real Estate Transfer Taxes					299,655.98
6154 Current Act 511 Amusement Taxes					56,441.38
6411 Delinquent Real Estate Taxes					502,903.59
6420 Delinquent Per Capita Taxes, Section 679					7,066.58
6440 Delinquent Local Enabling Taxes - Flat Rate Assessments					7,066.62
6500 Earnings on Investments		10,558.59			379,027.19
6700 Revenues from LEA Activities					58,944.23
6832 Federal IDEA Revenue Received as Pass Through					262,497.27
6910 Rentals					44,988.50
6920 Contributions and Donations from Private Sources					78,723.38
6942 Summer School Tuition					600.00
6944 Receipts from Other LEAs in Pennsylvania - Education					3,404.64
6991 Refunds of a Prior Year Expenditure					11.50
6999 Other Revenues Not Specified Above					521,848.69
6000 Total Revenue from Local Sources		\$10,558.59			\$24,786,757.94
7000 Revenue from State Sources					
7111 Basic Education Funding-Formula					4,006,869.98
7112 Basic Education Funding-Social Security					534,758.16
7160 Tuition for Orphans Subsidy					21,332.87
7220 Vocational Education					43,469.31
7271 Special Education funds for School-Aged Pupils					1,048,169.40
7311 Pupil Transportation Subsidy					765,293.77
7312 Nonpublic and Charter School Pupil Transportation Subsidy					43,120.00
7320 Rental and Sinking Fund Payments / Building Reimbursement Subsidy					10,867.01
7330 Health Services (Medical, Dental, Nurse, Act 25)					25,669.66
7340 State Property Tax Reduction Allocation					769,743.67
7361 School Safety and Security Grants					64,460.01

LEA : 114064003 Kutztown Area SD

Printed 11/30/2023 10:18:43 AM

	<u>General Fund (10)</u>	<u>Student Sponsored Activity Fund (21)</u>	<u>Public Purpose Trust (27)</u>	<u>Other Compt Approved (28)</u>	<u>Athletic / Activity (29)</u>	<u>Capital Reserve (690, 1850) (31)</u>
7000 Revenue from State Sources						
7362 School Mental Health & Safety and Security Grants	91,666.70					
7505 Ready to Learn Block Grant	140,805.00					
7599 Other State Revenue Not Listed Elsewhere in the 7000 Series	2,985.10					
7820 State Share of Retirement Contributions	2,633,310.51					
7000 Total Revenue from State Sources	\$10,202,521.15					
8000 Revenue from Federal Sources						
8514 Title I - Improving the Academic Achievement of the Disadvantaged	262,477.28					
8515 Title II - Preparing, Training, and Recruiting High Quality Teachers and Principals	50,456.75					
8516 Title III - Language Instruction for English Learners and Immigrant Students	5,860.30					
8517 Title IV - 21st Century Schools	17,010.84					
8743 ESSER II - Elementary and Secondary School Emergency Relief Fund	563,183.34					
8744 ARP ESSER - Elementary and Secondary School Emergency Relief Fund	615,686.32					
8751 ARP ESSER Learning Loss	56,471.50					
8752 ARP ESSER Summer Programs	20,145.65					
8753 ARP ESSER Afterschool Programs	61.53					
8810 School-Based Access Medicaid Reimbursement Program (SBAP) Reimbursements (Access)	195,595.00					
8820 Medical Assistance Reimbursement for Administrative Claiming (Quarterly) Program	7,900.84					
8000 Total Revenue from Federal Sources	\$1,794,849.35					
9000 Other Financing Sources						
9220 Leases and Other Right-to-Use Arrangements	45,175.78					
9290 Other Extended-Term Financing Proceeds	118,047.80					
9310 General Fund Transfers						
9350 Enterprise Fund Transfers	33,597.60					
9400 Sale of or Compensation for Loss of Fixed Assets	15,255.00					
9000 Total Other Financing Sources	\$212,076.18					
Total From All Sources	\$36,671,794.50	\$313,851.53				

LEA : 114064003 Kutztown Area SD

Printed 11/30/2023 10:18:43 AM

	<u>Capital Reserve</u> <u>(1431) (32)</u>	<u>Other Capital</u> <u>Projects Fund (39)</u>	<u>Debt Service (40)</u>	<u>Permanent (90)</u>	<u>Total</u>
7000 Revenue from State Sources					
7362 School Mental Health & Safety and Security Grants					91,666.70
7505 Ready to Learn Block Grant					140,805.00
7599 Other State Revenue Not Listed Elsewhere in the 7000 Series					2,985.10
7820 State Share of Retirement Contributions					2,633,310.51
7000 Total Revenue from State Sources					\$10,202,521.15
8000 Revenue from Federal Sources					
8514 Title I - Improving the Academic Achievement of the Disadvantaged					262,477.28
8515 Title II - Preparing, Training, and Recruiting High Quality Teachers and Principals					50,456.75
8516 Title III - Language Instruction for English Learners and Immigrant Students					5,860.30
8517 Title IV - 21st Century Schools					17,010.84
8743 ESSER II - Elementary and Secondary School Emergency Relief Fund					563,183.34
8744 ARP ESSER - Elementary and Secondary School Emergency Relief Fund					615,686.32
8751 ARP ESSER Learning Loss					56,471.50
8752 ARP ESSER Summer Programs					20,145.65
8753 ARP ESSER Afterschool Programs					61.53
8810 School-Based Access Medicaid Reimbursement Program (SBAP) Reimbursements (Access)					195,595.00
8820 Medical Assistance Reimbursement for Administrative Claiming (Quarterly) Program					7,900.84
8000 Total Revenue from Federal Sources					\$1,794,849.35
9000 Other Financing Sources					
9220 Leases and Other Right-to-Use Arrangements					45,175.78
9290 Other Extended-Term Financing Proceeds					118,047.80
9310 General Fund Transfers		372,785.11			372,785.11
9350 Enterprise Fund Transfers					33,597.60
9400 Sale of or Compensation for Loss of Fixed Assets					15,255.00
9000 Total Other Financing Sources		\$372,785.11			\$584,861.29
Total From All Sources		\$383,343.70			\$37,368,989.73

LEA : 114064003 Kutztown Area SD

Printed 11/30/2023 10:18:46 AM

	<u>General Fund (10)</u>	<u>Student Sponsored Activity Fund (21)</u>	<u>Public Purpose Trust (27)</u>	<u>Other Compt Approved (28)</u>	<u>Athletic / Activity (29)</u>	<u>Capital Reserve (690. 1850) (31)</u>
Revenue from Local Sources	24,462,347.82	313,851.53				
Revenue from State Sources	10,202,521.15					
Revenue from Federal Sources	1,794,849.35					
Other Financing Sources	212,076.18					
Total From All Sources	\$36,671,794.50	\$313,851.53				

LEA : 114064003 Kutztown Area SD

Printed 11/30/2023 10:18:46 AM

	<u>Capital Reserve (1431)</u> <u>(32)</u>	<u>Other Capital Projects</u> <u>Fund (39)</u>	<u>Debt Service (40)</u>	<u>Permanent (90)</u>	<u>Total</u>
Revenue from Local Sources		10,558.59			24,786,757.94
Revenue from State Sources					10,202,521.15
Revenue from Federal Sources					1,794,849.35
Other Financing Sources		372,785.11			584,861.29
Total From All Sources		\$383,343.70			\$37,368,989.73

LEA : 114064003 Kutztown Area SD

Printed 11/30/2023 10:18:52 AM

General Fund (10)

1000 Instruction	Total
100 <u>Personnel Services – Salaries</u>	
100 Personnel Services – Salaries	10,394,711.39
Total Personnel Services – Salaries	\$10,394,711.39
200 <u>Personnel Services – Employee Benefits</u>	
210 Group Insurance – Contracted Provider	69,456.27
220 Social Security Contributions	763,768.34
230 PSERS Retirement Contributions	3,593,739.00
260 Workers' Compensation	79,485.73
270 Group Insurance – Self-Insurance	1,753,281.74
Total Personnel Services – Employee Benefits	\$6,259,731.08
300 <u>Purchased Professional and Technical Services</u>	
322 Professional Educational Services – Ius	144,220.25
329 Professional Educational Services – Other	420,115.43
330 Other Professional Services	12,331.25
390 Other Purchased Professional and Technical Services	4,895.00
Total Purchased Professional and Technical Services	\$581,561.93
400 <u>Purchased Property Services</u>	
430 Repairs and Maintenance Services	39,156.65
440 Rentals	18,280.44
Total Purchased Property Services	\$57,437.09
500 <u>Other Purchased Services</u>	
510 Student Transportation Services	24,505.57
561 Tuition To Other School Districts Within the State	15,359.92
562 Tuition To Pennsylvania Charter Schools	2,068,733.45
563 Tuition To Nonpublic Schools	338,378.54
564 Tuition To Career and Technology Centers	633,319.09
567 Tuition To Approved Private Schools (APS) and PA Chartered Schools for the Deaf and Blind	28,105.26
568 Tuition To Private Residential Rehabilitative Institutions (PRRI) [In-State] and Detention Centers	4,255.52
569 Tuition – Other	120,320.00
580 Travel	2,635.17
Total Other Purchased Services	\$3,235,612.52
600 <u>Supplies</u>	
610 General Supplies	230,553.37
630 Food	463.05
640 Books and Periodicals	35,803.06
650 Supplies & Fees – Technology Related	200,598.88
Total Supplies	\$467,418.36
700 <u>Property</u>	
752 Capital Equipment – Original and Additional	118,047.80
Total Property	\$118,047.80
800 <u>Other Objects</u>	

LEA : 114064003 Kutztown Area SD

Printed 11/30/2023 10:18:52 AM

General Fund (10)		
1000 Instruction		<u>Total</u>
800 <u>Other Objects</u>		
810 Dues and Fees		11,660.91
Total Other Objects		\$11,660.91
Total 1000 Instruction		\$21,126,181.08

LEA : 114064003 Kutztown Area SD

Printed 11/30/2023 10:18:52 AM

General Fund (10)

1100 Regular Programs – Elementary / Secondary	Elementary	Secondary	Federal	Total
100 Personnel Services – Salaries				
100 Personnel Services – Salaries	4,428,556.28	3,185,897.12	368,559.23	7,983,012.63
Total Personnel Services – Salaries	\$4,428,556.28	\$3,185,897.12	\$368,559.23	\$7,983,012.63
200 Personnel Services – Employee Benefits				
210 Group Insurance – Contracted Provider	30,614.40	22,079.95	1,009.37	53,703.72
220 Social Security Contributions	325,583.01	235,537.88	27,327.68	588,448.57
230 PSERS Retirement Contributions	1,595,550.71	1,106,824.86	64,984.30	2,767,359.87
260 Workers' Compensation	34,960.34	24,153.65	1,487.01	60,601.00
270 Group Insurance – Self-Insurance	733,681.83	488,750.47	26,070.44	1,248,502.74
Total Personnel Services – Employee Benefits	\$2,720,390.29	\$1,877,346.81	\$120,878.80	\$4,718,615.90
300 Purchased Professional and Technical Services				
322 Professional Educational Services – lus	465.21	8,651.72		9,116.93
329 Professional Educational Services – Other	256,494.84	152,367.59		408,862.43
390 Other Purchased Professional and Technical Services	1,475.00		3,000.00	4,475.00
Total Purchased Professional and Technical Services	\$258,435.05	\$161,019.31	\$3,000.00	\$422,454.36
400 Purchased Property Services				
430 Repairs and Maintenance Services	19,829.28	19,327.37		39,156.65
440 Rentals	10,312.16	7,968.28		18,280.44
Total Purchased Property Services	\$30,141.44	\$27,295.65		\$57,437.09
500 Other Purchased Services				
510 Student Transportation Services	10,835.67	13,669.90		24,505.57
561 Tuition To Other School Districts Within the State		15,359.92		15,359.92
562 Tuition To Pennsylvania Charter Schools	451,718.82	576,505.19	213,685.00	1,241,909.01
568 Tuition To Private Residential Rehabilitative Institutions (PRRI) [In-State] and Detention Centers		4,135.52		4,135.52
569 Tuition – Other	15,672.41	14,647.59	90,000.00	120,320.00
580 Travel	753.06	264.99		1,018.05
Total Other Purchased Services	\$478,979.96	\$624,583.11	\$303,685.00	\$1,407,248.07
600 Supplies				
610 General Supplies	88,034.06	85,324.98	25,518.16	198,877.20
640 Books and Periodicals	17,334.43	8,267.53		25,601.96
650 Supplies & Fees – Technology Related	128,172.79	56,457.58	2,700.00	187,330.37
Total Supplies	\$233,541.28	\$150,050.09	\$28,218.16	\$411,809.53
700 Property				
752 Capital Equipment – Original and Additional	61,018.91	57,028.89		118,047.80
Total Property	\$61,018.91	\$57,028.89		\$118,047.80
800 Other Objects				
810 Dues and Fees	3,856.17	6,869.74		10,725.91
Total Other Objects	\$3,856.17	\$6,869.74		\$10,725.91
Total 1100 Regular Programs – Elementary / Secondary	\$8,214,919.38	\$6,090,090.72	\$824,341.19	\$15,129,351.29

LEA : 114064003 Kutztown Area SD

Printed 11/30/2023 10:18:52 AM

General Fund (10)

1110 Regular Programs	Elementary	Secondary	Federal	Total
100 <u>Personnel Services – Salaries</u>				
100 Personnel Services – Salaries	4,428,556.28	3,185,897.12	185,706.99	7,800,160.39
Total Personnel Services – Salaries	\$4,428,556.28	\$3,185,897.12	\$185,706.99	\$7,800,160.39
200 <u>Personnel Services – Employee Benefits</u>				
210 Group Insurance – Contracted Provider	30,614.40	22,079.95	1,009.37	53,703.72
220 Social Security Contributions	325,583.01	235,537.88	13,772.71	574,893.60
230 PSERS Retirement Contributions	1,595,550.71	1,106,824.86	32,747.57	2,735,123.14
260 Workers' Compensation	34,960.34	24,153.65	1,487.01	60,601.00
270 Group Insurance – Self-Insurance	733,681.83	488,750.47	26,070.44	1,248,502.74
Total Personnel Services – Employee Benefits	\$2,720,390.29	\$1,877,346.81	\$75,087.10	\$4,672,824.20
300 <u>Purchased Professional and Technical Services</u>				
322 Professional Educational Services – lus	465.21	8,651.72		9,116.93
329 Professional Educational Services – Other	256,494.84	152,367.59		408,862.43
390 Other Purchased Professional and Technical Services	1,475.00		3,000.00	4,475.00
Total Purchased Professional and Technical Services	\$258,435.05	\$161,019.31	\$3,000.00	\$422,454.36
400 <u>Purchased Property Services</u>				
430 Repairs and Maintenance Services	19,829.28	19,327.37		39,156.65
440 Rentals	10,312.16	7,968.28		18,280.44
Total Purchased Property Services	\$30,141.44	\$27,295.65		\$57,437.09
500 <u>Other Purchased Services</u>				
510 Student Transportation Services	10,835.67	13,669.90		24,505.57
561 Tuition To Other School Districts Within the State		15,359.92		15,359.92
562 Tuition To Pennsylvania Charter Schools	451,718.82	576,505.19	213,685.00	1,241,909.01
568 Tuition To Private Residential Rehabilitative Institutions (PRRI) [In-State] and Detention Centers		4,135.52		4,135.52
569 Tuition – Other	15,672.41	14,647.59	90,000.00	120,320.00
580 Travel	753.06	264.99		1,018.05
Total Other Purchased Services	\$478,979.96	\$624,583.11	\$303,685.00	\$1,407,248.07
600 <u>Supplies</u>				
610 General Supplies	88,034.06	85,324.98	6,847.02	180,206.06
640 Books and Periodicals	17,334.43	8,267.53		25,601.96
650 Supplies & Fees – Technology Related	128,172.79	56,457.58		184,630.37
Total Supplies	\$233,541.28	\$150,050.09	\$6,847.02	\$390,438.39
700 <u>Property</u>				
752 Capital Equipment – Original and Additional	61,018.91	57,028.89		118,047.80
Total Property	\$61,018.91	\$57,028.89		\$118,047.80
800 <u>Other Objects</u>				
810 Dues and Fees	3,856.17	6,869.74		10,725.91
Total Other Objects	\$3,856.17	\$6,869.74		\$10,725.91
Total 1110 Regular Programs	\$8,214,919.38	\$6,090,090.72	\$574,326.11	\$14,879,336.21

LEA : 114064003 Kutztown Area SD

Printed 11/30/2023 10:18:52 AM

General Fund (10)

1190 Federally-Funded Regular Programs	<u>Elementary</u>	<u>Secondary</u>	<u>Federal</u>	<u>Total</u>
100 <u>Personnel Services – Salaries</u>				
100 Personnel Services – Salaries			182,852.24	182,852.24
Total Personnel Services – Salaries			\$182,852.24	\$182,852.24
200 <u>Personnel Services – Employee Benefits</u>				
220 Social Security Contributions			13,554.97	13,554.97
230 PSERS Retirement Contributions			32,236.73	32,236.73
Total Personnel Services – Employee Benefits			\$45,791.70	\$45,791.70
600 <u>Supplies</u>				
610 General Supplies			18,671.14	18,671.14
650 Supplies & Fees – Technology Related			2,700.00	2,700.00
Total Supplies			\$21,371.14	\$21,371.14
Total 1190 Federally-Funded Regular Programs			\$250,015.08	\$250,015.08

LEA : 114064003 Kutztown Area SD

Printed 11/30/2023 10:18:52 AM

General Fund (10)				
1200 Special Programs – Elementary / Secondary	Elementary	Secondary	Federal	Total
100 Personnel Services – Salaries				
100 Personnel Services – Salaries	1,150,867.55	747,332.95	210,146.73	2,108,347.23
Total Personnel Services – Salaries	\$1,150,867.55	\$747,332.95	\$210,146.73	\$2,108,347.23
200 Personnel Services – Employee Benefits				
210 Group Insurance – Contracted Provider	7,706.88	7,035.52		14,742.40
220 Social Security Contributions	82,975.40	54,416.18	15,306.78	152,698.36
230 PSERS Retirement Contributions	400,730.20	289,309.00	37,043.76	727,082.96
260 Workers' Compensation	9,281.55	7,323.10		16,604.65
270 Group Insurance – Self-Insurance	269,249.67	215,029.92		484,279.59
Total Personnel Services – Employee Benefits	\$769,943.70	\$573,113.72	\$52,350.54	\$1,395,407.96
300 Purchased Professional and Technical Services				
322 Professional Educational Services – lus	75,612.64	58,082.68		133,695.32
330 Other Professional Services	9,190.63	3,140.62		12,331.25
390 Other Purchased Professional and Technical Services	217.10	202.90		420.00
Total Purchased Professional and Technical Services	\$85,020.37	\$61,426.20		\$146,446.57
500 Other Purchased Services				
562 Tuition To Pennsylvania Charter Schools	373,053.59	453,770.85		826,824.44
563 Tuition To Nonpublic Schools	20,862.68	121,920.86	195,595.00	338,378.54
567 Tuition To Approved Private Schools (APS) and PA Chartered Schools for the Deaf and Blind		28,105.26		28,105.26
568 Tuition To Private Residential Rehabilitative Institutions (PRRI) [In-State] and Detention Centers		120.00		120.00
Total Other Purchased Services	\$393,916.27	\$603,916.97	\$195,595.00	\$1,193,428.24
600 Supplies				
610 General Supplies	11,200.79	6,687.89		17,888.68
640 Books and Periodicals	6,938.79	3,262.31		10,201.10
650 Supplies & Fees – Technology Related	1,210.91	8,207.60		9,418.51
Total Supplies	\$19,350.49	\$18,157.80		\$37,508.29
800 Other Objects				
810 Dues and Fees		770.00		770.00
Total Other Objects		\$770.00		\$770.00
Total 1200 Special Programs – Elementary / Secondary	\$2,419,098.38	\$2,004,717.64	\$458,092.27	\$4,881,908.29

LEA : 114064003 Kutztown Area SD

Printed 11/30/2023 10:18:52 AM

General Fund (10)				
1210 Life Skills Support	<u>Elementary</u>	<u>Secondary</u>	<u>Federal</u>	<u>Total</u>
100 <u>Personnel Services – Salaries</u>				
100 Personnel Services – Salaries	126,573.14	72,968.29	205,453.26	404,994.69
Total Personnel Services – Salaries	\$126,573.14	\$72,968.29	\$205,453.26	\$404,994.69
200 <u>Personnel Services – Employee Benefits</u>				
210 Group Insurance – Contracted Provider	1,449.36	2,011.16		3,460.52
220 Social Security Contributions	8,751.03	5,177.11	14,997.60	28,925.74
230 PSERS Retirement Contributions	48,807.32	55,410.49	36,216.23	140,434.04
260 Workers' Compensation	1,227.54	1,997.48		3,225.02
270 Group Insurance – Self-Insurance	53,139.59	53,312.11		106,451.70
Total Personnel Services – Employee Benefits	\$113,374.84	\$117,908.35	\$51,213.83	\$282,497.02
500 <u>Other Purchased Services</u>				
563 Tuition To Nonpublic Schools	20,862.68	45,827.32	118,240.00	184,930.00
Total Other Purchased Services	\$20,862.68	\$45,827.32	\$118,240.00	\$184,930.00
600 <u>Supplies</u>				
610 General Supplies	2,652.58	3,171.29		5,823.87
640 Books and Periodicals	1,138.09	1,419.94		2,558.03
650 Supplies & Fees – Technology Related	297.00			297.00
Total Supplies	\$4,087.67	\$4,591.23		\$8,678.90
800 <u>Other Objects</u>				
810 Dues and Fees		170.00		170.00
Total Other Objects		\$170.00		\$170.00
Total 1210 Life Skills Support	\$264,898.33	\$241,465.19	\$374,907.09	\$881,270.61

LEA : 114064003 Kutztown Area SD

Printed 11/30/2023 10:18:52 AM

General Fund (10)

1220 Sensory Support	Elementary	Secondary	Federal	Total
100 Personnel Services – Salaries				
100 Personnel Services – Salaries	119,770.21	65,020.57		184,790.78
Total Personnel Services – Salaries	\$119,770.21	\$65,020.57		\$184,790.78
200 Personnel Services – Employee Benefits				
210 Group Insurance – Contracted Provider	510.22	370.76		880.98
220 Social Security Contributions	9,111.03	4,922.84		14,033.87
230 PSERS Retirement Contributions	39,881.15	22,107.32		61,988.47
260 Workers' Compensation	905.68	502.04		1,407.72
270 Group Insurance – Self-Insurance	3,762.68	3,762.68		7,525.36
Total Personnel Services – Employee Benefits	\$54,170.76	\$31,665.64		\$85,836.40
300 Purchased Professional and Technical Services				
322 Professional Educational Services – lus	62,710.64	26,794.68		89,505.32
330 Other Professional Services	9,190.63	3,140.62		12,331.25
Total Purchased Professional and Technical Services	\$71,901.27	\$29,935.30		\$101,836.57
600 Supplies				
610 General Supplies	4,814.36	1,973.13		6,787.49
Total Supplies	\$4,814.36	\$1,973.13		\$6,787.49
Total 1220 Sensory Support	\$250,656.60	\$128,594.64		\$379,251.24

Page 45

LEA : 114064003 Kutztown Area SD

Printed 11/30/2023 10:18:52 AM

General Fund (10)

1240 Academic Support

	<u>Elementary</u>	<u>Secondary</u>	<u>Federal</u>	<u>Total</u>
100 <u>Personnel Services – Salaries</u>				
100 Personnel Services – Salaries	904,524.20	609,344.09	4,693.47	1,518,561.76
Total Personnel Services – Salaries	\$904,524.20	\$609,344.09	\$4,693.47	\$1,518,561.76
200 <u>Personnel Services – Employee Benefits</u>				
210 Group Insurance – Contracted Provider	5,747.30	4,653.60		10,400.90
220 Social Security Contributions	65,113.34	44,316.23	309.18	109,738.75
230 PSERS Retirement Contributions	312,041.73	211,791.19	827.53	524,660.45
260 Workers' Compensation	7,148.33	4,823.58		11,971.91
270 Group Insurance – Self-Insurance	212,347.40	157,955.13		370,302.53
Total Personnel Services – Employee Benefits	\$602,398.10	\$423,539.73	\$1,136.71	\$1,027,074.54
300 <u>Purchased Professional and Technical Services</u>				
322 Professional Educational Services – lus	2,012.00	31,288.00		33,300.00
Total Purchased Professional and Technical Services	\$2,012.00	\$31,288.00		\$33,300.00
500 <u>Other Purchased Services</u>				
562 Tuition To Pennsylvania Charter Schools	373,053.59	453,770.85		826,824.44
563 Tuition To Nonpublic Schools		76,093.54		76,093.54
568 Tuition To Private Residential Rehabilitative Institutions (PRRI) [In-State] and Detention Centers		120.00		120.00
Total Other Purchased Services	\$373,053.59	\$529,984.39		\$903,037.98
600 <u>Supplies</u>				
610 General Supplies	3,733.85	1,543.47		5,277.32
640 Books and Periodicals	5,800.70	1,842.37		7,643.07
650 Supplies & Fees – Technology Related	913.91	8,207.60		9,121.51
Total Supplies	\$10,448.46	\$11,593.44		\$22,041.90
800 <u>Other Objects</u>				
810 Dues and Fees		600.00		600.00
Total Other Objects		\$600.00		\$600.00
Total 1240 Academic Support	\$1,892,436.35	\$1,606,349.65	\$5,830.18	\$3,504,616.18

LEA : 114064003 Kutztown Area SD

Printed 11/30/2023 10:18:52 AM

General Fund (10)

1241 Learning Support – Public	Elementary	Secondary	Federal	Total
100 Personnel Services – Salaries				
100 Personnel Services – Salaries	804,308.75	559,652.80	4,693.47	1,368,655.02
Total Personnel Services – Salaries	\$804,308.75	\$559,652.80	\$4,693.47	\$1,368,655.02
200 Personnel Services – Employee Benefits				
210 Group Insurance – Contracted Provider	5,372.52	4,342.12		9,714.64
220 Social Security Contributions	57,677.29	40,572.65	309.18	98,559.12
230 PSERS Retirement Contributions	277,022.32	194,609.03	827.53	472,458.88
260 Workers' Compensation	6,353.08	4,433.38		10,786.46
270 Group Insurance – Self-Insurance	196,993.70	151,485.01		348,478.71
Total Personnel Services – Employee Benefits	\$543,418.91	\$395,442.19	\$1,136.71	\$939,997.81
300 Purchased Professional and Technical Services				
322 Professional Educational Services – lus	2,012.00	31,288.00		33,300.00
Total Purchased Professional and Technical Services	\$2,012.00	\$31,288.00		\$33,300.00
500 Other Purchased Services				
562 Tuition To Pennsylvania Charter Schools	373,053.59	453,770.85		826,824.44
563 Tuition To Nonpublic Schools		76,093.54		76,093.54
568 Tuition To Private Residential Rehabilitative Institutions (PRRI) [In-State] and Detention Centers		120.00		120.00
Total Other Purchased Services	\$373,053.59	\$529,984.39		\$903,037.98
600 Supplies				
610 General Supplies	3,443.96	1,543.47		4,987.43
640 Books and Periodicals	5,800.70	1,842.37		7,643.07
650 Supplies & Fees – Technology Related	913.91	8,207.60		9,121.51
Total Supplies	\$10,158.57	\$11,593.44		\$21,752.01
Total 1241 Learning Support – Public	\$1,732,951.82	\$1,527,960.82	\$5,830.18	\$3,266,742.82

LEA : 114064003 Kutztown Area SD

Printed 11/30/2023 10:18:52 AM

General Fund (10)

1243 Gifted Support	Elementary	Secondary	Federal	Total
100 Personnel Services – Salaries				
100 Personnel Services – Salaries	100,215.45	49,691.29		149,906.74
Total Personnel Services – Salaries	\$100,215.45	\$49,691.29		\$149,906.74
200 Personnel Services – Employee Benefits				
210 Group Insurance – Contracted Provider	374.78	311.48		686.26
220 Social Security Contributions	7,436.05	3,743.58		11,179.63
230 PSERS Retirement Contributions	35,019.41	17,182.16		52,201.57
260 Workers' Compensation	795.25	390.20		1,185.45
270 Group Insurance – Self-Insurance	15,353.70	6,470.12		21,823.82
Total Personnel Services – Employee Benefits	\$58,979.19	\$28,097.54		\$87,076.73
600 Supplies				
610 General Supplies	289.89			289.89
Total Supplies	\$289.89			\$289.89
800 Other Objects				
810 Dues and Fees		600.00		600.00
Total Other Objects		\$600.00		\$600.00
Total 1243 Gifted Support	\$159,484.53	\$78,388.83		\$237,873.36

LEA : 114064003 Kutztown Area SD

Printed 11/30/2023 10:18:52 AM

General Fund (10)				
1280 Early Intervention Support	<u>Elementary</u>	<u>Secondary</u>	<u>Federal</u>	<u>Total</u>
300 <u>Purchased Professional and Technical Services</u>				
322 Professional Educational Services – lus	10,890.00			10,890.00
Total Purchased Professional and Technical Services	\$10,890.00			\$10,890.00
Total 1280 Early Intervention Support	\$10,890.00			\$10,890.00

LEA : 114064003 Kutztown Area SD

Printed 11/30/2023 10:18:52 AM

General Fund (10)

1290 Special Programs - Other Support	<u>Elementary</u>	<u>Secondary</u>	<u>Federal</u>	<u>Total</u>
300 <u>Purchased Professional and Technical Services</u>				
390 Other Purchased Professional and Technical Services	217.10	202.90		420.00
Total Purchased Professional and Technical Services	\$217.10	\$202.90		\$420.00
500 <u>Other Purchased Services</u>				
567 Tuition To Approved Private Schools (APS) and PA Chartered Schools for the Deaf and Blind		28,105.26		28,105.26
Total Other Purchased Services		\$28,105.26		\$28,105.26
Total 1290 Special Programs - Other Support	\$217.10	\$28,308.16		\$28,525.26

LEA : 114064003 Kutztown Area SD

Printed 11/30/2023 10:18:52 AM

General Fund (10)

1300 Vocational Education

	<u>Elementary</u>	<u>Secondary</u>	<u>Federal</u>	<u>Total</u>
100 <u>Personnel Services – Salaries</u>				
100 Personnel Services – Salaries		231,746.78		231,746.78
Total Personnel Services – Salaries		\$231,746.78		\$231,746.78
200 <u>Personnel Services – Employee Benefits</u>				
210 Group Insurance – Contracted Provider		1,010.15		1,010.15
220 Social Security Contributions		17,149.91		17,149.91
230 PSERS Retirement Contributions		78,074.82		78,074.82
260 Workers' Compensation		1,783.91		1,783.91
270 Group Insurance – Self-Insurance		20,499.41		20,499.41
Total Personnel Services – Employee Benefits		\$118,518.20		\$118,518.20
500 <u>Other Purchased Services</u>				
564 Tuition To Career and Technology Centers		633,319.09		633,319.09
580 Travel		1,617.12		1,617.12
Total Other Purchased Services		\$634,936.21		\$634,936.21
600 <u>Supplies</u>				
610 General Supplies		11,411.98		11,411.98
650 Supplies & Fees – Technology Related		2,100.00		2,100.00
Total Supplies		\$13,511.98		\$13,511.98
800 <u>Other Objects</u>				
810 Dues and Fees		165.00		165.00
Total Other Objects		\$165.00		\$165.00
Total 1300 Vocational Education		\$998,878.17		\$998,878.17

LEA : 114064003 Kutztown Area SD

Printed 11/30/2023 10:18:52 AM

General Fund (10)				
1400 Other Instructional Programs – Elementary / Secondary	<u>Elementary</u>	<u>Secondary</u>	<u>Federal</u>	<u>Total</u>
100 <u>Personnel Services – Salaries</u>				
100 Personnel Services – Salaries	260.97	69.78	71,274.00	71,604.75
Total Personnel Services – Salaries	\$260.97	\$69.78	\$71,274.00	\$71,604.75
200 <u>Personnel Services – Employee Benefits</u>				
220 Social Security Contributions	18.36	4.88	5,448.26	5,471.50
230 PSERS Retirement Contributions	5,902.96	2,750.33	12,568.06	21,221.35
260 Workers’ Compensation	2.09	0.56	493.52	496.17
Total Personnel Services – Employee Benefits	\$5,923.41	\$2,755.77	\$18,509.84	\$27,189.02
300 <u>Purchased Professional and Technical Services</u>				
329 Professional Educational Services – Other			7,003.00	7,003.00
Total Purchased Professional and Technical Services			\$7,003.00	\$7,003.00
600 <u>Supplies</u>				
610 General Supplies			2,375.51	2,375.51
630 Food			463.05	463.05
650 Supplies & Fees – Technology Related			1,750.00	1,750.00
Total Supplies			\$4,588.56	\$4,588.56
Total 1400 Other Instructional Programs – Elementary / Secondary	\$6,184.38	\$2,825.55	\$101,375.40	\$110,385.33

LEA : 114064003 Kutztown Area SD

Printed 11/30/2023 10:18:52 AM

General Fund (10)				
1420 Summer School	<u>Elementary</u>	<u>Secondary</u>	<u>Federal</u>	<u>Total</u>
100 <u>Personnel Services – Salaries</u>				
100 Personnel Services – Salaries			71,274.00	71,274.00
Total Personnel Services – Salaries			\$71,274.00	\$71,274.00
200 <u>Personnel Services – Employee Benefits</u>				
220 Social Security Contributions			5,448.26	5,448.26
230 PSERS Retirement Contributions	5,810.94	2,725.73	12,568.06	21,104.73
260 Workers’ Compensation			493.52	493.52
Total Personnel Services – Employee Benefits	\$5,810.94	\$2,725.73	\$18,509.84	\$27,046.51
300 <u>Purchased Professional and Technical Services</u>				
329 Professional Educational Services – Other			7,003.00	7,003.00
Total Purchased Professional and Technical Services			\$7,003.00	\$7,003.00
600 <u>Supplies</u>				
610 General Supplies			2,375.51	2,375.51
630 Food			463.05	463.05
650 Supplies & Fees – Technology Related			1,750.00	1,750.00
Total Supplies			\$4,588.56	\$4,588.56
Total 1420 Summer School	\$5,810.94	\$2,725.73	\$101,375.40	\$109,912.07

LEA : 114064003 Kutztown Area SD

Printed 11/30/2023 10:18:52 AM

General Fund (10)

1430 Homebound Instruction	<u>Elementary</u>	<u>Secondary</u>	<u>Federal</u>	<u>Total</u>
100 <u>Personnel Services – Salaries</u>				
100 Personnel Services – Salaries	260.97	69.78		330.75
Total Personnel Services – Salaries	\$260.97	\$69.78		\$330.75
200 <u>Personnel Services – Employee Benefits</u>				
220 Social Security Contributions	18.36	4.88		23.24
230 PSERS Retirement Contributions	92.02	24.60		116.62
260 Workers’ Compensation	2.09	0.56		2.65
Total Personnel Services – Employee Benefits	\$112.47	\$30.04		\$142.51
Total 1430 Homebound Instruction	\$373.44	\$99.82		\$473.26

LEA : 114064003 Kutztown Area SD

Printed 11/30/2023 10:18:52 AM

General Fund (10)

1500 Nonpublic School Programs

	<u>Elementary</u>	<u>Secondary</u>	<u>Federal</u>	<u>Total</u>
300 <u>Purchased Professional and Technical Services</u>				
322 Professional Educational Services – lus			1,408.00	1,408.00
Total Purchased Professional and Technical Services			\$1,408.00	\$1,408.00
Total 1500 Nonpublic School Programs			\$1,408.00	\$1,408.00

LEA : 114064003 Kutztown Area SD

Printed 11/30/2023 10:18:52 AM

General Fund (10)

1600 Adult Education Programs	<u>Elementary</u>	<u>Secondary</u>	<u>Federal</u>	<u>Total</u>
300 <u>Purchased Professional and Technical Services</u>				
329 Professional Educational Services – Other				4,250.00
Total Purchased Professional and Technical Services				\$4,250.00
Total 1600 Adult Education Programs				\$4,250.00

LEA : 114064003 Kutztown Area SD

Printed 11/30/2023 10:19:02 AM

General Fund (10)

2000 Support Services

Total

100 <u>Personnel Services – Salaries</u>	
100 Personnel Services – Salaries	4,582,470.59
Total Personnel Services – Salaries	\$4,582,470.59
200 <u>Personnel Services – Employee Benefits</u>	
210 Group Insurance – Contracted Provider	29,873.10
220 Social Security Contributions	336,225.03
230 PSERS Retirement Contributions	1,527,876.81
240 Tuition Reimbursement	203,749.05
260 Workers' Compensation	36,091.80
270 Group Insurance – Self-Insurance	864,219.73
291 Other Retirement Plans	16,467.84
Total Personnel Services – Employee Benefits	\$3,014,503.36
300 <u>Purchased Professional and Technical Services</u>	
310 Official / Administrative Services	42,887.47
323 Professional Educational Services – Other Educational Agencies	1,121.02
329 Professional Educational Services – Other	3,300.00
330 Other Professional Services	395,496.97
340 Technical Services	142,707.11
350 Security / Safety Services	17,240.00
360 Employee Training and Development Services	84,921.57
390 Other Purchased Professional and Technical Services	44,056.67
Total Purchased Professional and Technical Services	\$731,730.81
400 <u>Purchased Property Services</u>	
410 Cleaning Services	254,971.62
420 Utility Services	96,952.18
430 Repairs and Maintenance Services	454,887.50
440 Rentals	7,108.29
Total Purchased Property Services	\$813,919.59
500 <u>Other Purchased Services</u>	
513 Contracted Carriers	1,127,371.82
516 Student Transportation Services From the IU	979.15
519 Student Transportation Services From Other Sources	210,547.04
520 Insurance – General	17,093.25
521 Fire Insurance	101,223.00
522 Automotive Liability Insurance	11,996.00
523 General Property and Liability Insurance	660.00
530 Communications	92,731.23
549 Other Advertising/Public Relations	1,070.39
550 Printing and Binding	2,385.00
580 Travel	12,580.60
595 IU Payments By Withholding	27,066.36
599 Other Miscellaneous Purchased Services	30,197.18
Total Other Purchased Services	\$1,635,901.02

LEA : 114064003 Kutztown Area SD

Printed 11/30/2023 10:19:02 AM

General Fund (10)

2000 Support Services

Total

600 <u>Supplies</u>	
610 General Supplies	223,431.42
620 Energy	590,405.54
630 Food	18,073.03
640 Books and Periodicals	44,356.19
650 Supplies & Fees – Technology Related	282,921.17
Total Supplies	\$1,159,187.35
700 <u>Property</u>	
739 Leases - Other	45,175.78
752 Capital Equipment – Original and Additional	9,513.99
762 Capitalized Equipment - Replacement	2,592.42
766 Capitalized Technology Equipment – Replacement	411,479.72
Total Property	\$468,761.91
800 <u>Other Objects</u>	
810 Dues and Fees	41,339.54
890 Miscellaneous Expenditures	12,902.00
Total Other Objects	\$54,241.54
Total 2000 Support Services	\$12,460,716.17

LEA : 114064003 Kutztown Area SD

Printed 11/30/2023 10:19:02 AM

General Fund (10)				
2100 Support Services – Students	<u>Elementary</u>	<u>Secondary</u>	<u>Federal</u>	<u>Total</u>
100 <u>Personnel Services – Salaries</u>				
100 Personnel Services – Salaries	320,257.46	454,057.49	73,096.35	847,411.30
Total Personnel Services – Salaries	\$320,257.46	\$454,057.49	\$73,096.35	\$847,411.30
200 <u>Personnel Services – Employee Benefits</u>				
210 Group Insurance – Contracted Provider	1,697.55	2,823.77	394.70	4,916.02
220 Social Security Contributions	23,577.44	33,949.78	5,507.23	63,034.45
230 PSERS Retirement Contributions	114,866.99	161,507.29	12,889.80	289,264.08
260 Workers' Compensation	2,524.72	3,554.23	585.32	6,664.27
270 Group Insurance – Self-Insurance	51,139.43	44,925.80	6,271.13	102,336.36
291 Other Retirement Plans		1,100.00		1,100.00
Total Personnel Services – Employee Benefits	\$193,806.13	\$247,860.87	\$25,648.18	\$467,315.18
300 <u>Purchased Professional and Technical Services</u>				
330 Other Professional Services	15,725.87	11,494.89		131,059.04
Total Purchased Professional and Technical Services	\$15,725.87	\$11,494.89		\$131,059.04
500 <u>Other Purchased Services</u>				
580 Travel	169.80	460.75		630.55
Total Other Purchased Services	\$169.80	\$460.75		\$630.55
600 <u>Supplies</u>				
610 General Supplies	2,394.39	4,741.77		7,136.16
650 Supplies & Fees – Technology Related	1,624.29	1,653.56		3,277.85
Total Supplies	\$4,018.68	\$6,395.33		\$10,414.01
800 <u>Other Objects</u>				
810 Dues and Fees	152.49	392.51		545.00
890 Miscellaneous Expenditures		12,902.00		12,902.00
Total Other Objects	\$152.49	\$13,294.51		\$13,447.00
Total 2100 Support Services – Students	\$534,130.43	\$733,563.84	\$98,744.53	\$1,470,277.08

LEA : 114064003 Kutztown Area SD

Printed 11/30/2023 10:19:02 AM

General Fund (10)

2120 Guidance Services	Elementary	Secondary	Federal	Total
100 <u>Personnel Services – Salaries</u>				
100 Personnel Services – Salaries	260,723.16	296,187.72		556,910.88
Total Personnel Services – Salaries	\$260,723.16	\$296,187.72		\$556,910.88
200 <u>Personnel Services – Employee Benefits</u>				
210 Group Insurance – Contracted Provider	1,560.37	2,018.91		3,579.28
220 Social Security Contributions	19,023.17	22,395.38		41,418.55
230 PSERS Retirement Contributions	89,985.78	102,343.54		192,329.32
260 Workers' Compensation	2,089.55	2,373.39		4,462.94
270 Group Insurance – Self-Insurance	51,139.43	34,398.96		85,538.39
291 Other Retirement Plans		1,100.00		1,100.00
Total Personnel Services – Employee Benefits	\$163,798.30	\$164,630.18		\$328,428.48
500 <u>Other Purchased Services</u>				
580 Travel		302.06		302.06
Total Other Purchased Services		\$302.06		\$302.06
600 <u>Supplies</u>				
610 General Supplies	654.33	3,115.50		3,769.83
650 Supplies & Fees – Technology Related	1,624.29	1,653.56		3,277.85
Total Supplies	\$2,278.62	\$4,769.06		\$7,047.68
800 <u>Other Objects</u>				
810 Dues and Fees		250.00		250.00
890 Miscellaneous Expenditures		12,902.00		12,902.00
Total Other Objects		\$13,152.00		\$13,152.00
Total 2120 Guidance Services	\$426,800.08	\$479,041.02		\$905,841.10

LEA : 114064003 Kutztown Area SD

Printed 11/30/2023 10:19:02 AM

General Fund (10)				
2140 Psychological Services				
	<u>Elementary</u>	<u>Secondary</u>	<u>Federal</u>	<u>Total</u>
100 <u>Personnel Services – Salaries</u>				
100 Personnel Services – Salaries	59,534.30	47,088.60	73,096.35	179,719.25
Total Personnel Services – Salaries	\$59,534.30	\$47,088.60	\$73,096.35	\$179,719.25
200 <u>Personnel Services – Employee Benefits</u>				
210 Group Insurance – Contracted Provider	137.18	119.92	394.70	651.80
220 Social Security Contributions	4,554.27	3,602.40	5,507.23	13,663.90
230 PSERS Retirement Contributions	24,881.21	22,429.46	12,889.80	60,200.47
260 Workers' Compensation	435.17	346.63	585.32	1,367.12
270 Group Insurance – Self-Insurance			6,271.13	6,271.13
Total Personnel Services – Employee Benefits	\$30,007.83	\$26,498.41	\$25,648.18	\$82,154.42
300 <u>Purchased Professional and Technical Services</u>				
330 Other Professional Services	15,725.87	11,494.89		27,220.76
Total Purchased Professional and Technical Services	\$15,725.87	\$11,494.89		\$27,220.76
500 <u>Other Purchased Services</u>				
580 Travel	169.80	158.69		328.49
Total Other Purchased Services	\$169.80	\$158.69		\$328.49
600 <u>Supplies</u>				
610 General Supplies	1,740.06	1,626.27		3,366.33
Total Supplies	\$1,740.06	\$1,626.27		\$3,366.33
800 <u>Other Objects</u>				
810 Dues and Fees	152.49	142.51		295.00
Total Other Objects	\$152.49	\$142.51		\$295.00
Total 2140 Psychological Services	\$107,330.35	\$87,009.37	\$98,744.53	\$293,084.25

LEA : 114064003 Kutztown Area SD

Printed 11/30/2023 10:19:02 AM

General Fund (10)

2160 Social Work Services

<u>Elementary</u>	<u>Secondary</u>	<u>Federal</u>	<u>Total</u>
-------------------	------------------	----------------	--------------

300 Purchased Professional and Technical Services

330 Other Professional Services			103,838.28
---------------------------------	--	--	------------

Total Purchased Professional and Technical Services			\$103,838.28
--	--	--	---------------------

Total 2160 Social Work Services			\$103,838.28
--	--	--	---------------------

LEA : 114064003 Kutztown Area SD

Printed 11/30/2023 10:19:02 AM

General Fund (10)

2190 Other Student Services	<u>Elementary</u>	<u>Secondary</u>	<u>Federal</u>	<u>Total</u>
100 <u>Personnel Services – Salaries</u>				
100 Personnel Services – Salaries		110,781.17		110,781.17
Total Personnel Services – Salaries		\$110,781.17		\$110,781.17
200 <u>Personnel Services – Employee Benefits</u>				
210 Group Insurance – Contracted Provider		684.94		684.94
220 Social Security Contributions		7,952.00		7,952.00
230 PSERS Retirement Contributions		36,734.29		36,734.29
260 Workers' Compensation		834.21		834.21
270 Group Insurance – Self-Insurance		10,526.84		10,526.84
Total Personnel Services – Employee Benefits		\$56,732.28		\$56,732.28
Total 2190 Other Student Services		\$167,513.45		\$167,513.45

LEA : 114064003 Kutztown Area SD

Printed 11/30/2023 10:19:02 AM

General Fund (10)

2200 Support Services – Instructional Staff	Elementary	Secondary	Federal	Total
100 Personnel Services – Salaries				
100 Personnel Services – Salaries	344,799.09	531,336.81	30,931.25	907,067.15
Total Personnel Services – Salaries	\$344,799.09	\$531,336.81	\$30,931.25	\$907,067.15
200 Personnel Services – Employee Benefits				
210 Group Insurance – Contracted Provider	2,758.43	3,331.09		6,089.52
220 Social Security Contributions	25,922.64	39,900.86	2,366.29	68,189.79
230 PSERS Retirement Contributions	122,935.16	188,029.90	5,454.42	316,419.48
240 Tuition Reimbursement	92,398.44	74,997.61		167,396.05
260 Workers' Compensation	2,802.36	4,293.30	247.68	7,343.34
270 Group Insurance – Self-Insurance	67,726.09	91,958.19		159,684.28
291 Other Retirement Plans	678.59	634.23		1,312.82
Total Personnel Services – Employee Benefits	\$315,221.71	\$403,145.18	\$8,068.39	\$726,435.28
300 Purchased Professional and Technical Services				
323 Professional Educational Services – Other Educational Agencies	1,121.02			1,121.02
329 Professional Educational Services – Other	930.42	869.58	1,500.00	3,300.00
340 Technical Services	64,882.49	60,639.84		125,522.33
360 Employee Training and Development Services	1,576.79	1,498.21	70,865.45	73,940.45
390 Other Purchased Professional and Technical Services	2,857.73	2,670.86	755.00	6,283.59
Total Purchased Professional and Technical Services	\$71,368.45	\$65,678.49	\$73,120.45	\$210,167.39
400 Purchased Property Services				
430 Repairs and Maintenance Services	7,284.67	6,808.33		14,093.00
Total Purchased Property Services	\$7,284.67	\$6,808.33		\$14,093.00
500 Other Purchased Services				
530 Communications	20,111.87	18,796.76		38,908.63
580 Travel	1,578.89	1,178.45	3,532.77	6,290.11
Total Other Purchased Services	\$21,690.76	\$19,975.21	\$3,532.77	\$45,198.74
600 Supplies				
610 General Supplies	4,630.72	4,489.43	2,122.39	11,242.54
630 Food	1,327.14	1,240.38		2,567.52
640 Books and Periodicals	10,410.32	33,295.40	568.67	44,274.39
650 Supplies & Fees – Technology Related	131,710.86	120,189.25		251,900.11
Total Supplies	\$148,079.04	\$159,214.46	\$2,691.06	\$309,984.56
700 Property				
752 Capital Equipment – Original and Additional	3,430.14	6,083.85		9,513.99
762 Capitalized Equipment - Replacement		2,592.42		2,592.42
766 Capitalized Technology Equipment – Replacement			411,479.72	411,479.72
Total Property	\$3,430.14	\$8,676.27	\$411,479.72	\$423,586.13
800 Other Objects				
810 Dues and Fees	302.90	283.10		586.00
Total Other Objects	\$302.90	\$283.10		\$586.00
Total 2200 Support Services – Instructional Staff	\$912,176.76	\$1,195,117.85	\$529,823.64	\$2,637,118.25

LEA : 114064003 Kutztown Area SD

Printed 11/30/2023 10:19:02 AM

General Fund (10)

2240 Computer-Assisted Instruction Support Services	Elementary	Secondary	Federal	Total
100 <u>Personnel Services – Salaries</u>				
100 Personnel Services – Salaries	73,542.63	253,853.11	30,931.25	358,326.99
Total Personnel Services – Salaries	\$73,542.63	\$253,853.11	\$30,931.25	\$358,326.99
200 <u>Personnel Services – Employee Benefits</u>				
210 Group Insurance – Contracted Provider	765.28	1,329.22		2,094.50
220 Social Security Contributions	5,437.40	18,920.67	2,366.29	26,724.36
230 PSERS Retirement Contributions	26,213.84	89,183.17	5,454.42	120,851.43
260 Workers' Compensation	588.88	2,032.68	247.68	2,869.24
270 Group Insurance – Self-Insurance	25,062.02	50,116.26		75,178.28
291 Other Retirement Plans	405.33	378.83		784.16
Total Personnel Services – Employee Benefits	\$58,472.75	\$161,960.83	\$8,068.39	\$228,501.97
300 <u>Purchased Professional and Technical Services</u>				
329 Professional Educational Services – Other	930.42	869.58		1,800.00
340 Technical Services	64,882.49	60,639.84		125,522.33
Total Purchased Professional and Technical Services	\$65,812.91	\$61,509.42		\$127,322.33
400 <u>Purchased Property Services</u>				
430 Repairs and Maintenance Services	7,284.67	6,808.33		14,093.00
Total Purchased Property Services	\$7,284.67	\$6,808.33		\$14,093.00
500 <u>Other Purchased Services</u>				
530 Communications	20,111.87	18,796.76		38,908.63
580 Travel	89.85	83.97		173.82
Total Other Purchased Services	\$20,201.72	\$18,880.73		\$39,082.45
600 <u>Supplies</u>				
610 General Supplies	614.70	574.51		1,189.21
650 Supplies & Fees – Technology Related	83,951.51	78,461.93		162,413.44
Total Supplies	\$84,566.21	\$79,036.44		\$163,602.65
700 <u>Property</u>				
752 Capital Equipment – Original and Additional	3,430.14	3,205.85		6,635.99
766 Capitalized Technology Equipment – Replacement			411,479.72	411,479.72
Total Property	\$3,430.14	\$3,205.85	\$411,479.72	\$418,115.71
800 <u>Other Objects</u>				
810 Dues and Fees	127.67	119.33		247.00
Total Other Objects	\$127.67	\$119.33		\$247.00
Total 2240 Computer-Assisted Instruction Support Services	\$313,438.70	\$585,374.04	\$450,479.36	\$1,349,292.10

LEA : 114064003 Kutztown Area SD

Printed 11/30/2023 10:19:02 AM

General Fund (10)				
2250 School Library Services	<u>Elementary</u>	<u>Secondary</u>	<u>Federal</u>	<u>Total</u>
100 <u>Personnel Services – Salaries</u>				
100 Personnel Services – Salaries	130,160.94	146,649.01		276,809.95
Total Personnel Services – Salaries	\$130,160.94	\$146,649.01		\$276,809.95
200 <u>Personnel Services – Employee Benefits</u>				
210 Group Insurance – Contracted Provider	791.46	878.78		1,670.24
220 Social Security Contributions	10,279.83	11,513.56		21,793.39
230 PSERS Retirement Contributions	47,605.41	53,307.29		100,912.70
260 Workers' Compensation	1,081.10	1,210.57		2,291.67
270 Group Insurance – Self-Insurance	3,635.50	5,365.42		9,000.92
Total Personnel Services – Employee Benefits	\$63,393.30	\$72,275.62		\$135,668.92
300 <u>Purchased Professional and Technical Services</u>				
390 Other Purchased Professional and Technical Services	508.51	475.25		983.76
Total Purchased Professional and Technical Services	\$508.51	\$475.25		\$983.76
600 <u>Supplies</u>				
610 General Supplies	1,697.48	713.09		2,410.57
640 Books and Periodicals	10,209.89	33,108.08		43,317.97
650 Supplies & Fees – Technology Related	3,112.58			3,112.58
Total Supplies	\$15,019.95	\$33,821.17		\$48,841.12
700 <u>Property</u>				
762 Capitalized Equipment - Replacement		2,592.42		2,592.42
Total Property		\$2,592.42		\$2,592.42
Total 2250 School Library Services	\$209,082.70	\$255,813.47		\$464,896.17

LEA : 114064003 Kutztown Area SD

Printed 11/30/2023 10:19:02 AM

General Fund (10)

2260 Instruction and Curriculum Development Services	Elementary	Secondary	Federal	Total
100 <u>Personnel Services – Salaries</u>				
100 Personnel Services – Salaries	141,095.52	130,834.69		271,930.21
Total Personnel Services – Salaries	\$141,095.52	\$130,834.69		\$271,930.21
200 <u>Personnel Services – Employee Benefits</u>				
210 Group Insurance – Contracted Provider	1,201.69	1,123.09		2,324.78
220 Social Security Contributions	10,205.41	9,466.63		19,672.04
230 PSERS Retirement Contributions	49,115.91	45,539.44		94,655.35
260 Workers' Compensation	1,132.38	1,050.05		2,182.43
270 Group Insurance – Self-Insurance	39,028.57	36,476.51		75,505.08
291 Other Retirement Plans	273.26	255.40		528.66
Total Personnel Services – Employee Benefits	\$100,957.22	\$93,911.12		\$194,868.34
300 <u>Purchased Professional and Technical Services</u>				
323 Professional Educational Services – Other Educational Agencies	1,121.02			1,121.02
390 Other Purchased Professional and Technical Services	2,349.22	2,195.61		4,544.83
Total Purchased Professional and Technical Services	\$3,470.24	\$2,195.61		\$5,665.85
500 <u>Other Purchased Services</u>				
580 Travel	966.55	903.36		1,869.91
Total Other Purchased Services	\$966.55	\$903.36		\$1,869.91
600 <u>Supplies</u>				
610 General Supplies	1,617.10	2,546.25		4,163.35
630 Food	954.61	892.20		1,846.81
640 Books and Periodicals	200.43	187.32		387.75
650 Supplies & Fees – Technology Related	44,646.77	41,727.32		86,374.09
Total Supplies	\$47,418.91	\$45,353.09		\$92,772.00
700 <u>Property</u>				
752 Capital Equipment – Original and Additional		2,878.00		2,878.00
Total Property		\$2,878.00		\$2,878.00
800 <u>Other Objects</u>				
810 Dues and Fees	175.23	163.77		339.00
Total Other Objects	\$175.23	\$163.77		\$339.00
Total 2260 Instruction and Curriculum Development Services	\$294,083.67	\$276,239.64		\$570,323.31

LEA : 114064003 Kutztown Area SD

Printed 11/30/2023 10:19:02 AM

General Fund (10)				
2270 Instructional Staff Professional Development Services	<u>Elementary</u>	<u>Secondary</u>	<u>Federal</u>	<u>Total</u>
200 <u>Personnel Services – Employee Benefits</u>				
240 Tuition Reimbursement	92,398.44	74,997.61		167,396.05
Total Personnel Services – Employee Benefits	\$92,398.44	\$74,997.61		\$167,396.05
300 <u>Purchased Professional and Technical Services</u>				
329 Professional Educational Services – Other			1,500.00	1,500.00
360 Employee Training and Development Services	1,576.79	1,498.21	70,865.45	73,940.45
390 Other Purchased Professional and Technical Services			755.00	755.00
Total Purchased Professional and Technical Services	\$1,576.79	\$1,498.21	\$73,120.45	\$76,195.45
500 <u>Other Purchased Services</u>				
580 Travel	522.49	191.12	3,532.77	4,246.38
Total Other Purchased Services	\$522.49	\$191.12	\$3,532.77	\$4,246.38
600 <u>Supplies</u>				
610 General Supplies	701.44	655.58	2,122.39	3,479.41
630 Food	372.53	348.18		720.71
640 Books and Periodicals			568.67	568.67
Total Supplies	\$1,073.97	\$1,003.76	\$2,691.06	\$4,768.79
Total 2270 Instructional Staff Professional Development Services	\$95,571.69	\$77,690.70	\$79,344.28	\$252,606.67

LEA : 114064003 Kutztown Area SD

Printed 11/30/2023 10:19:02 AM

General Fund (10)

2300 Support Services – Administration	Elementary	Secondary	Federal	Total
100 <u>Personnel Services – Salaries</u>				
100 Personnel Services – Salaries	387,381.40	421,765.58		1,257,486.77
Total Personnel Services – Salaries	\$387,381.40	\$421,765.58		\$1,257,486.77
200 <u>Personnel Services – Employee Benefits</u>				
210 Group Insurance – Contracted Provider	3,066.95	1,697.72		7,275.07
220 Social Security Contributions	28,052.98	31,548.27		90,617.81
230 PSERS Retirement Contributions	130,070.88	131,963.51		404,823.06
260 Workers' Compensation	3,068.65	3,125.09		9,722.69
270 Group Insurance – Self-Insurance	112,563.84	37,652.68		222,733.72
291 Other Retirement Plans	1,295.88	1,516.57		5,333.99
Total Personnel Services – Employee Benefits	\$278,119.18	\$207,503.84		\$740,506.34
300 <u>Purchased Professional and Technical Services</u>				
310 Official / Administrative Services				42,887.47
330 Other Professional Services				70,876.00
340 Technical Services				572.40
390 Other Purchased Professional and Technical Services	460.83	992.27		14,703.10
Total Purchased Professional and Technical Services	\$460.83	\$992.27		\$129,038.97
500 <u>Other Purchased Services</u>				
520 Insurance – General				17,093.25
530 Communications	8,676.56	8,109.21		16,785.77
549 Other Advertising/Public Relations				1,070.39
550 Printing and Binding				2,385.00
580 Travel	769.66	670.09		3,472.35
599 Other Miscellaneous Purchased Services	6,282.27	23,914.91		30,197.18
Total Other Purchased Services	\$15,728.49	\$32,694.21		\$71,003.94
600 <u>Supplies</u>				
610 General Supplies	3,420.46	2,418.72		27,821.28
630 Food	1,838.62	5,274.54		14,127.49
640 Books and Periodicals				28.80
650 Supplies & Fees – Technology Related	308.00			308.00
Total Supplies	\$5,567.08	\$7,693.26		\$42,285.57
800 <u>Other Objects</u>				
810 Dues and Fees	1,368.01	2,098.59		30,119.61
Total Other Objects	\$1,368.01	\$2,098.59		\$30,119.61
Total 2300 Support Services – Administration	\$688,624.99	\$672,747.75		\$2,270,441.20

LEA : 114064003 Kutztown Area SD

Printed 11/30/2023 10:19:02 AM

General Fund (10)

2310 Board Services

	<u>Elementary</u>	<u>Secondary</u>	<u>Federal</u>	<u>Total</u>
100 <u>Personnel Services – Salaries</u>				
100 Personnel Services – Salaries				2,500.00
Total Personnel Services – Salaries				\$2,500.00
200 <u>Personnel Services – Employee Benefits</u>				
220 Social Security Contributions				186.12
230 PSERS Retirement Contributions				881.50
260 Workers’ Compensation				20.02
Total Personnel Services – Employee Benefits				\$1,087.64
300 <u>Purchased Professional and Technical Services</u>				
330 Other Professional Services				34,270.00
390 Other Purchased Professional and Technical Services				13,250.00
Total Purchased Professional and Technical Services				\$47,520.00
500 <u>Other Purchased Services</u>				
520 Insurance – General				13,866.00
549 Other Advertising/Public Relations				1,070.39
580 Travel				150.75
Total Other Purchased Services				\$15,087.14
600 <u>Supplies</u>				
610 General Supplies				149.25
630 Food				40.54
Total Supplies				\$189.79
800 <u>Other Objects</u>				
810 Dues and Fees				15,449.73
Total Other Objects				\$15,449.73
Total 2310 Board Services				\$81,834.30

LEA : 114064003 Kutztown Area SD

Printed 11/30/2023 10:19:02 AM

General Fund (10)

2320 Board Treasurer Services	<u>Elementary</u>	<u>Secondary</u>	<u>Federal</u>	<u>Total</u>
100 <u>Personnel Services – Salaries</u>				
100 Personnel Services – Salaries				1,050.00
Total Personnel Services – Salaries				\$1,050.00
200 <u>Personnel Services – Employee Benefits</u>				
220 Social Security Contributions				78.34
230 PSERS Retirement Contributions				370.24
260 Workers’ Compensation				8.41
Total Personnel Services – Employee Benefits				\$456.99
500 <u>Other Purchased Services</u>				
520 Insurance – General				250.00
Total Other Purchased Services				\$250.00
Total 2320 Board Treasurer Services				\$1,756.99

LEA : 114064003 Kutztown Area SD

Printed 11/30/2023 10:19:02 AM

General Fund (10)

2330 Tax Assessment and Collection Services	<u>Elementary</u>	<u>Secondary</u>	<u>Federal</u>	<u>Total</u>
100 <u>Personnel Services – Salaries</u>				
100 Personnel Services – Salaries				23,212.00
Total Personnel Services – Salaries				\$23,212.00
200 <u>Personnel Services – Employee Benefits</u>				
220 Social Security Contributions				1,775.75
260 Workers’ Compensation				185.87
Total Personnel Services – Employee Benefits				\$1,961.62
300 <u>Purchased Professional and Technical Services</u>				
310 Official / Administrative Services				42,887.47
Total Purchased Professional and Technical Services				\$42,887.47
500 <u>Other Purchased Services</u>				
520 Insurance – General				2,977.25
Total Other Purchased Services				\$2,977.25
600 <u>Supplies</u>				
610 General Supplies				17,593.92
Total Supplies				\$17,593.92
Total 2330 Tax Assessment and Collection Services				\$88,632.26

LEA : 114064003 Kutztown Area SD

Printed 11/30/2023 10:19:02 AM

General Fund (10)

2350 Legal and Accounting Services	<u>Elementary</u>	<u>Secondary</u>	<u>Federal</u>	<u>Total</u>
300 <u>Purchased Professional and Technical Services</u>				
330 Other Professional Services				36,606.00
Total Purchased Professional and Technical Services				\$36,606.00
Total 2350 Legal and Accounting Services				\$36,606.00

LEA : 114064003 Kutztown Area SD

Printed 11/30/2023 10:19:02 AM

General Fund (10)				
2360 Office of the Superintendent / Executive Director Services	<u>Elementary</u>	<u>Secondary</u>	<u>Federal</u>	<u>Total</u>
100 <u>Personnel Services – Salaries</u>				
100 Personnel Services – Salaries				421,577.79
Total Personnel Services – Salaries				\$421,577.79
200 <u>Personnel Services – Employee Benefits</u>				
210 Group Insurance – Contracted Provider				2,510.40
220 Social Security Contributions				28,976.35
230 PSERS Retirement Contributions				141,536.93
260 Workers' Compensation				3,314.65
270 Group Insurance – Self-Insurance				72,517.20
291 Other Retirement Plans				2,521.54
Total Personnel Services – Employee Benefits				\$251,377.07
300 <u>Purchased Professional and Technical Services</u>				
340 Technical Services				572.40
Total Purchased Professional and Technical Services				\$572.40
500 <u>Other Purchased Services</u>				
530 Communications	8,676.56	8,109.21		16,785.77
580 Travel				1,881.85
Total Other Purchased Services	\$8,676.56	\$8,109.21		\$18,667.62
600 <u>Supplies</u>				
610 General Supplies				3,479.26
630 Food				6,973.79
640 Books and Periodicals				28.80
Total Supplies				\$10,481.85
800 <u>Other Objects</u>				
810 Dues and Fees				11,203.28
Total Other Objects				\$11,203.28
Total 2360 Office of the Superintendent / Executive Director Services	\$8,676.56	\$8,109.21		\$713,880.01

LEA : 114064003 Kutztown Area SD

Printed 11/30/2023 10:19:02 AM

General Fund (10)				
2380 Office of the Principal Services	<u>Elementary</u>	<u>Secondary</u>	<u>Federal</u>	<u>Total</u>
100 <u>Personnel Services – Salaries</u>				
100 Personnel Services – Salaries	387,381.40	421,765.58		809,146.98
Total Personnel Services – Salaries	\$387,381.40	\$421,765.58		\$809,146.98
200 <u>Personnel Services – Employee Benefits</u>				
210 Group Insurance – Contracted Provider	3,066.95	1,697.72		4,764.67
220 Social Security Contributions	28,052.98	31,548.27		59,601.25
230 PSERS Retirement Contributions	130,070.88	131,963.51		262,034.39
260 Workers' Compensation	3,068.65	3,125.09		6,193.74
270 Group Insurance – Self-Insurance	112,563.84	37,652.68		150,216.52
291 Other Retirement Plans	1,295.88	1,516.57		2,812.45
Total Personnel Services – Employee Benefits	\$278,119.18	\$207,503.84		\$485,623.02
300 <u>Purchased Professional and Technical Services</u>				
390 Other Purchased Professional and Technical Services	460.83	992.27		1,453.10
Total Purchased Professional and Technical Services	\$460.83	\$992.27		\$1,453.10
500 <u>Other Purchased Services</u>				
580 Travel	769.66	670.09		1,439.75
599 Other Miscellaneous Purchased Services	6,282.27	23,914.91		30,197.18
Total Other Purchased Services	\$7,051.93	\$24,585.00		\$31,636.93
600 <u>Supplies</u>				
610 General Supplies	3,420.46	2,418.72		5,839.18
630 Food	1,838.62	5,274.54		7,113.16
650 Supplies & Fees – Technology Related	308.00			308.00
Total Supplies	\$5,567.08	\$7,693.26		\$13,260.34
800 <u>Other Objects</u>				
810 Dues and Fees	1,368.01	2,098.59		3,466.60
Total Other Objects	\$1,368.01	\$2,098.59		\$3,466.60
Total 2380 Office of the Principal Services	\$679,948.43	\$664,638.54		\$1,344,586.97

LEA : 114064003 Kutztown Area SD

Printed 11/30/2023 10:19:02 AM

General Fund (10)				
2390 Other Administration Services	<u>Elementary</u>	<u>Secondary</u>	<u>Federal</u>	<u>Total</u>
500 <u>Other Purchased Services</u>				
550 Printing and Binding				2,385.00
Total Other Purchased Services				\$2,385.00
600 <u>Supplies</u>				
610 General Supplies				759.67
Total Supplies				\$759.67
Total 2390 Other Administration Services				\$3,144.67

LEA : 114064003 Kutztown Area SD

Printed 11/30/2023 10:19:02 AM

General Fund (10)				
2400 Support Services – Pupil Health	<u>Elementary</u>	<u>Secondary</u>	<u>Federal</u>	<u>Total</u>
100 <u>Personnel Services – Salaries</u>				
100 Personnel Services – Salaries				295,951.95
Total Personnel Services – Salaries				\$295,951.95
200 <u>Personnel Services – Employee Benefits</u>				
210 Group Insurance – Contracted Provider				1,319.11
220 Social Security Contributions				21,842.93
230 PSERS Retirement Contributions				102,417.57
260 Workers' Compensation				2,325.82
270 Group Insurance – Self-Insurance				32,057.98
Total Personnel Services – Employee Benefits				\$159,963.41
300 <u>Purchased Professional and Technical Services</u>				
330 Other Professional Services				180,746.46
Total Purchased Professional and Technical Services				\$180,746.46
500 <u>Other Purchased Services</u>				
580 Travel				47.72
Total Other Purchased Services				\$47.72
600 <u>Supplies</u>				
610 General Supplies				14,641.11
650 Supplies & Fees – Technology Related				3,340.00
Total Supplies				\$17,981.11
Total 2400 Support Services – Pupil Health				\$654,690.65

LEA : 114064003 Kutztown Area SD

Printed 11/30/2023 10:19:02 AM

General Fund (10)

2420 Medical Services	<u>Elementary</u>	<u>Secondary</u>	<u>Federal</u>	<u>Total</u>
300 <u>Purchased Professional and Technical Services</u>				
330 Other Professional Services				170,098.15
Total Purchased Professional and Technical Services				\$170,098.15
600 <u>Supplies</u>				
610 General Supplies				53.35
Total Supplies				\$53.35
Total 2420 Medical Services				\$170,151.50

LEA : 114064003 Kutztown Area SD

Printed 11/30/2023 10:19:02 AM

General Fund (10)

2430 Dental Services	<u>Elementary</u>	<u>Secondary</u>	<u>Federal</u>	<u>Total</u>
300 <u>Purchased Professional and Technical Services</u>				
330 Other Professional Services				50.00
Total Purchased Professional and Technical Services				\$50.00
600 <u>Supplies</u>				
610 General Supplies				44.18
Total Supplies				\$44.18
Total 2430 Dental Services				\$94.18

LEA : 114064003 Kutztown Area SD

Printed 11/30/2023 10:19:02 AM

General Fund (10)

2440 Nursing Services

	<u>Elementary</u>	<u>Secondary</u>	<u>Federal</u>	<u>Total</u>
100 <u>Personnel Services – Salaries</u>				
100 Personnel Services – Salaries				295,951.95
Total Personnel Services – Salaries				\$295,951.95
200 <u>Personnel Services – Employee Benefits</u>				
210 Group Insurance – Contracted Provider				1,319.11
220 Social Security Contributions				21,842.93
230 PSERS Retirement Contributions				102,417.57
260 Workers' Compensation				2,325.82
270 Group Insurance – Self-Insurance				32,057.98
Total Personnel Services – Employee Benefits				\$159,963.41
300 <u>Purchased Professional and Technical Services</u>				
330 Other Professional Services				10,598.31
Total Purchased Professional and Technical Services				\$10,598.31
500 <u>Other Purchased Services</u>				
580 Travel				47.72
Total Other Purchased Services				\$47.72
600 <u>Supplies</u>				
610 General Supplies				5,606.46
650 Supplies & Fees – Technology Related				3,340.00
Total Supplies				\$8,946.46
Total 2440 Nursing Services				\$475,507.85

LEA : 114064003 Kutztown Area SD

Printed 11/30/2023 10:19:02 AM

General Fund (10)				
2490 Other Health Services	<u>Elementary</u>	<u>Secondary</u>	<u>Federal</u>	<u>Total</u>
600 <u>Supplies</u>				
610 General Supplies				8,937.12
Total Supplies				\$8,937.12
Total 2490 Other Health Services				\$8,937.12

LEA : 114064003 Kutztown Area SD

Printed 11/30/2023 10:19:02 AM

General Fund (10)

2500 Support Services – Business	Elementary	Secondary	Federal	Total
100 <u>Personnel Services – Salaries</u>				
100 Personnel Services – Salaries				247,596.76
Total Personnel Services – Salaries				\$247,596.76
200 <u>Personnel Services – Employee Benefits</u>				
210 Group Insurance – Contracted Provider				2,091.83
220 Social Security Contributions				18,612.82
230 PSERS Retirement Contributions				85,484.74
260 Workers' Compensation				1,945.34
270 Group Insurance – Self-Insurance				50,752.20
291 Other Retirement Plans				1,902.75
Total Personnel Services – Employee Benefits				\$160,789.68
300 <u>Purchased Professional and Technical Services</u>				
330 Other Professional Services				12,465.47
340 Technical Services				16,612.38
390 Other Purchased Professional and Technical Services				190.00
Total Purchased Professional and Technical Services				\$29,267.85
400 <u>Purchased Property Services</u>				
430 Repairs and Maintenance Services				3,525.86
440 Rentals				4,996.56
Total Purchased Property Services				\$8,522.42
500 <u>Other Purchased Services</u>				
580 Travel				571.12
Total Other Purchased Services				\$571.12
600 <u>Supplies</u>				
610 General Supplies				1,507.41
640 Books and Periodicals				53.00
650 Supplies & Fees – Technology Related				5,671.60
Total Supplies				\$7,232.01
800 <u>Other Objects</u>				
810 Dues and Fees				8,306.23
Total Other Objects				\$8,306.23
Total 2500 Support Services – Business				\$462,286.07

LEA : 114064003 Kutztown Area SD

Printed 11/30/2023 10:19:02 AM

General Fund (10)				
2510 Fiscal Services				
	<u>Elementary</u>	<u>Secondary</u>	<u>Federal</u>	<u>Total</u>
100 <u>Personnel Services – Salaries</u>				
100 Personnel Services – Salaries				247,596.76
Total Personnel Services – Salaries				\$247,596.76
200 <u>Personnel Services – Employee Benefits</u>				
210 Group Insurance – Contracted Provider				2,091.83
220 Social Security Contributions				18,612.82
230 PSERS Retirement Contributions				85,484.74
260 Workers' Compensation				1,945.34
270 Group Insurance – Self-Insurance				50,752.20
291 Other Retirement Plans				1,902.75
Total Personnel Services – Employee Benefits				\$160,789.68
300 <u>Purchased Professional and Technical Services</u>				
330 Other Professional Services				12,465.47
340 Technical Services				16,612.38
390 Other Purchased Professional and Technical Services				190.00
Total Purchased Professional and Technical Services				\$29,267.85
400 <u>Purchased Property Services</u>				
430 Repairs and Maintenance Services				3,525.86
440 Rentals				4,996.56
Total Purchased Property Services				\$8,522.42
500 <u>Other Purchased Services</u>				
580 Travel				571.12
Total Other Purchased Services				\$571.12
600 <u>Supplies</u>				
610 General Supplies				1,507.41
640 Books and Periodicals				53.00
650 Supplies & Fees – Technology Related				5,671.60
Total Supplies				\$7,232.01
800 <u>Other Objects</u>				
810 Dues and Fees				8,306.23
Total Other Objects				\$8,306.23
Total 2510 Fiscal Services				\$462,286.07

LEA : 114064003 Kutztown Area SD

Printed 11/30/2023 10:19:02 AM

General Fund (10)

2511 Supervision of Fiscal Services - Head of Component	<u>Elementary</u>	<u>Secondary</u>	<u>Federal</u>	<u>Total</u>
100 <u>Personnel Services – Salaries</u>				
100 Personnel Services – Salaries				125,986.28
Total Personnel Services – Salaries				\$125,986.28
200 <u>Personnel Services – Employee Benefits</u>				
210 Group Insurance – Contracted Provider				1,001.47
220 Social Security Contributions				9,509.64
230 PSERS Retirement Contributions				41,254.20
260 Workers' Compensation				936.85
Total Personnel Services – Employee Benefits				\$52,702.16
500 <u>Other Purchased Services</u>				
580 Travel				209.96
Total Other Purchased Services				\$209.96
Total 2511 Supervision of Fiscal Services - Head of Component				\$178,898.40

LEA : 114064003 Kutztown Area SD

Printed 11/30/2023 10:19:02 AM

General Fund (10)				
2515 Financial Accounting Services	<u>Elementary</u>	<u>Secondary</u>	<u>Federal</u>	<u>Total</u>
100 <u>Personnel Services – Salaries</u>				
100 Personnel Services – Salaries				121,610.48
Total Personnel Services – Salaries				\$121,610.48
200 <u>Personnel Services – Employee Benefits</u>				
210 Group Insurance – Contracted Provider				1,090.36
220 Social Security Contributions				9,103.18
230 PSERS Retirement Contributions				44,230.54
260 Workers' Compensation				1,008.49
270 Group Insurance – Self-Insurance				50,752.20
291 Other Retirement Plans				1,902.75
Total Personnel Services – Employee Benefits				\$108,087.52
300 <u>Purchased Professional and Technical Services</u>				
330 Other Professional Services				12,465.47
340 Technical Services				16,612.38
390 Other Purchased Professional and Technical Services				190.00
Total Purchased Professional and Technical Services				\$29,267.85
400 <u>Purchased Property Services</u>				
430 Repairs and Maintenance Services				3,525.86
440 Rentals				4,996.56
Total Purchased Property Services				\$8,522.42
500 <u>Other Purchased Services</u>				
580 Travel				361.16
Total Other Purchased Services				\$361.16
600 <u>Supplies</u>				
610 General Supplies				1,507.41
640 Books and Periodicals				53.00
650 Supplies & Fees – Technology Related				5,671.60
Total Supplies				\$7,232.01
800 <u>Other Objects</u>				
810 Dues and Fees				8,306.23
Total Other Objects				\$8,306.23
Total 2515 Financial Accounting Services				\$283,387.67

LEA : 114064003 Kutztown Area SD

Printed 11/30/2023 10:19:02 AM

General Fund (10)

2600 Operation and Maintenance of Plant Services	Elementary	Secondary	Federal	Total
100 <u>Personnel Services – Salaries</u>				
100 Personnel Services – Salaries				866,822.91
Total Personnel Services – Salaries				\$866,822.91
200 <u>Personnel Services – Employee Benefits</u>				
210 Group Insurance – Contracted Provider				6,879.03
220 Social Security Contributions				61,740.37
230 PSERS Retirement Contributions				274,656.39
260 Workers' Compensation				6,807.09
270 Group Insurance – Self-Insurance				240,996.63
291 Other Retirement Plans				5,666.28
Total Personnel Services – Employee Benefits				\$596,745.79
300 <u>Purchased Professional and Technical Services</u>				
350 Security / Safety Services				17,240.00
390 Other Purchased Professional and Technical Services				14,805.00
Total Purchased Professional and Technical Services				\$32,045.00
400 <u>Purchased Property Services</u>				
410 Cleaning Services				254,971.62
420 Utility Services				96,952.18
430 Repairs and Maintenance Services				428,954.72
440 Rentals				2,111.73
Total Purchased Property Services				\$782,990.25
500 <u>Other Purchased Services</u>				
521 Fire Insurance				101,223.00
522 Automotive Liability Insurance				11,996.00
523 General Property and Liability Insurance				660.00
530 Communications				37,036.83
580 Travel				1,338.23
Total Other Purchased Services				\$152,254.06
600 <u>Supplies</u>				
610 General Supplies	70,311.05	87,894.73		158,205.78
620 Energy				568,446.29
630 Food				1,166.28
650 Supplies & Fees – Technology Related				8,027.24
Total Supplies	\$70,311.05	\$87,894.73		\$735,845.59
700 <u>Property</u>				
739 Leases - Other				45,175.78
Total Property				\$45,175.78
800 <u>Other Objects</u>				
810 Dues and Fees				1,419.42
Total Other Objects				\$1,419.42
Total 2600 Operation and Maintenance of Plant Services	\$70,311.05	\$87,894.73		\$3,213,298.80

LEA : 114064003 Kutztown Area SD

Printed 11/30/2023 10:19:02 AM

General Fund (10)

2610 Supervision of Operation and Maintenance of Plant Services	<u>Elementary</u>	<u>Secondary</u>	<u>Federal</u>	<u>Total</u>
100 <u>Personnel Services – Salaries</u>				
100 Personnel Services – Salaries				86,832.16
Total Personnel Services – Salaries				\$86,832.16
200 <u>Personnel Services – Employee Benefits</u>				
210 Group Insurance – Contracted Provider				96.55
220 Social Security Contributions				6,631.87
230 PSERS Retirement Contributions				29,952.27
260 Workers' Compensation				695.29
Total Personnel Services – Employee Benefits				\$37,375.98
Total 2610 Supervision of Operation and Maintenance of Plant Services				\$124,208.14

LEA : 114064003 Kutztown Area SD

Printed 11/30/2023 10:19:02 AM

General Fund (10)

2611 Supervision of Operation and Maintenance of Plant Services – Head of Component	<u>Elementary</u>	<u>Secondary</u>	<u>Federal</u>	<u>Total</u>
100 <u>Personnel Services – Salaries</u>				
100 Personnel Services – Salaries				86,832.16
Total Personnel Services – Salaries				\$86,832.16
200 <u>Personnel Services – Employee Benefits</u>				
210 Group Insurance – Contracted Provider				96.55
220 Social Security Contributions				6,631.87
230 PSERS Retirement Contributions				29,952.27
260 Workers' Compensation				695.29
Total Personnel Services – Employee Benefits				\$37,375.98
Total 2611 Supervision of Operation and Maintenance of Plant Services – Head of Component				\$124,208.14

LEA : 114064003 Kutztown Area SD

Printed 11/30/2023 10:19:02 AM

General Fund (10)				
2620 Operation of Buildings Services	<u>Elementary</u>	<u>Secondary</u>	<u>Federal</u>	<u>Total</u>
100 <u>Personnel Services – Salaries</u>				
100 Personnel Services – Salaries				779,990.75
Total Personnel Services – Salaries				\$779,990.75
200 <u>Personnel Services – Employee Benefits</u>				
210 Group Insurance – Contracted Provider				6,782.48
220 Social Security Contributions				55,108.50
230 PSERS Retirement Contributions				244,704.12
260 Workers' Compensation				6,111.80
270 Group Insurance – Self-Insurance				240,996.63
291 Other Retirement Plans				5,666.28
Total Personnel Services – Employee Benefits				\$559,369.81
300 <u>Purchased Professional and Technical Services</u>				
350 Security / Safety Services				17,240.00
390 Other Purchased Professional and Technical Services				14,805.00
Total Purchased Professional and Technical Services				\$32,045.00
400 <u>Purchased Property Services</u>				
410 Cleaning Services				254,971.62
420 Utility Services				96,952.18
430 Repairs and Maintenance Services				383,318.38
440 Rentals				2,111.73
Total Purchased Property Services				\$737,353.91
500 <u>Other Purchased Services</u>				
521 Fire Insurance				101,223.00
522 Automotive Liability Insurance				11,996.00
523 General Property and Liability Insurance				660.00
530 Communications				37,036.83
580 Travel				1,338.23
Total Other Purchased Services				\$152,254.06
600 <u>Supplies</u>				
610 General Supplies	61,554.63	67,553.62		129,108.25
620 Energy				568,446.29
630 Food				1,121.79
650 Supplies & Fees – Technology Related				6,027.24
Total Supplies	\$61,554.63	\$67,553.62		\$704,703.57
700 <u>Property</u>				
739 Leases - Other				45,175.78
Total Property				\$45,175.78
800 <u>Other Objects</u>				
810 Dues and Fees				1,419.42
Total Other Objects				\$1,419.42
Total 2620 Operation of Buildings Services	\$61,554.63	\$67,553.62		\$3,012,312.30

LEA : 114064003 Kutztown Area SD

Printed 11/30/2023 10:19:02 AM

General Fund (10)

2630 Care and Upkeep of Grounds Services	<u>Elementary</u>	<u>Secondary</u>	<u>Federal</u>	<u>Total</u>
400 <u>Purchased Property Services</u>				
430 Repairs and Maintenance Services				45,636.34
Total Purchased Property Services				\$45,636.34
600 <u>Supplies</u>				
610 General Supplies	8,119.43	19,745.77		27,865.20
Total Supplies	\$8,119.43	\$19,745.77		\$27,865.20
Total 2630 Care and Upkeep of Grounds Services	\$8,119.43	\$19,745.77		\$73,501.54

LEA : 114064003 Kutztown Area SD

Printed 11/30/2023 10:19:02 AM

General Fund (10)				
2660 Safety and Security Services	<u>Elementary</u>	<u>Secondary</u>	<u>Federal</u>	<u>Total</u>
600 <u>Supplies</u>				
610 General Supplies	636.99	595.34		1,232.33
630 Food				44.49
650 Supplies & Fees – Technology Related				2,000.00
Total Supplies	\$636.99	\$595.34		\$3,276.82
Total 2660 Safety and Security Services	\$636.99	\$595.34		\$3,276.82

LEA : 114064003 Kutztown Area SD

Printed 11/30/2023 10:19:02 AM

General Fund (10)				
2700 Student Transportation Services				
	<u>Elementary</u>	<u>Secondary</u>	<u>Federal</u>	<u>Total</u>
100 <u>Personnel Services – Salaries</u>				
100 Personnel Services – Salaries				107,162.96
Total Personnel Services – Salaries				\$107,162.96
200 <u>Personnel Services – Employee Benefits</u>				
210 Group Insurance – Contracted Provider				856.00
220 Social Security Contributions				8,246.99
230 PSERS Retirement Contributions				36,315.11
260 Workers' Compensation				863.21
270 Group Insurance – Self-Insurance				29,983.48
291 Other Retirement Plans				550.00
Total Personnel Services – Employee Benefits				\$76,814.79
300 <u>Purchased Professional and Technical Services</u>				
330 Other Professional Services				350.00
Total Purchased Professional and Technical Services				\$350.00
400 <u>Purchased Property Services</u>				
430 Repairs and Maintenance Services				8,313.92
Total Purchased Property Services				\$8,313.92
500 <u>Other Purchased Services</u>				
513 Contracted Carriers			15,517.81	1,127,371.82
516 Student Transportation Services From the IU				979.15
519 Student Transportation Services From Other Sources			15,044.59	210,547.04
580 Travel				105.67
Total Other Purchased Services			\$30,562.40	\$1,339,003.68
600 <u>Supplies</u>				
610 General Supplies				438.55
620 Energy				21,959.25
630 Food				211.74
650 Supplies & Fees – Technology Related				4,300.00
Total Supplies				\$26,909.54
800 <u>Other Objects</u>				
810 Dues and Fees				20.00
Total Other Objects				\$20.00
Total 2700 Student Transportation Services			\$30,562.40	\$1,558,574.89

LEA : 114064003 Kutztown Area SD

Printed 11/30/2023 10:19:02 AM

General Fund (10)				
2720 Vehicle Operation Services				
	<u>Elementary</u>	<u>Secondary</u>	<u>Federal</u>	<u>Total</u>
100 <u>Personnel Services – Salaries</u>				
100 Personnel Services – Salaries				104,095.26
Total Personnel Services – Salaries				\$104,095.26
200 <u>Personnel Services – Employee Benefits</u>				
210 Group Insurance – Contracted Provider				856.00
220 Social Security Contributions				8,012.30
230 PSERS Retirement Contributions				35,233.44
260 Workers' Compensation				838.65
270 Group Insurance – Self-Insurance				29,983.48
Total Personnel Services – Employee Benefits				\$74,923.87
300 <u>Purchased Professional and Technical Services</u>				
330 Other Professional Services				350.00
Total Purchased Professional and Technical Services				\$350.00
500 <u>Other Purchased Services</u>				
513 Contracted Carriers			15,517.81	826,721.52
516 Student Transportation Services From the IU				979.15
519 Student Transportation Services From Other Sources			15,044.59	210,547.04
580 Travel				105.67
Total Other Purchased Services			\$30,562.40	\$1,038,353.38
600 <u>Supplies</u>				
610 General Supplies				438.55
620 Energy				21,959.25
630 Food				211.74
650 Supplies & Fees – Technology Related				4,300.00
Total Supplies				\$26,909.54
800 <u>Other Objects</u>				
810 Dues and Fees				20.00
Total Other Objects				\$20.00
Total 2720 Vehicle Operation Services			\$30,562.40	\$1,244,652.05

LEA : 114064003 Kutztown Area SD

Printed 11/30/2023 10:19:02 AM

General Fund (10)

2740 Vehicle Servicing and Maintenance Services	<u>Elementary</u>	<u>Secondary</u>	<u>Federal</u>	<u>Total</u>
400 <u>Purchased Property Services</u>				
430 Repairs and Maintenance Services				8,313.92
Total Purchased Property Services				\$8,313.92
Total 2740 Vehicle Servicing and Maintenance Services				\$8,313.92

LEA : 114064003 Kutztown Area SD

Printed 11/30/2023 10:19:02 AM

General Fund (10)

2750 Nonpublic Transportation	<u>Elementary</u>	<u>Secondary</u>	<u>Federal</u>	<u>Total</u>
100 <u>Personnel Services – Salaries</u>				
100 Personnel Services – Salaries				3,067.70
Total Personnel Services – Salaries				\$3,067.70
200 <u>Personnel Services – Employee Benefits</u>				
220 Social Security Contributions				234.69
230 PSERS Retirement Contributions				1,081.67
260 Workers’ Compensation				24.56
291 Other Retirement Plans				550.00
Total Personnel Services – Employee Benefits				\$1,890.92
500 <u>Other Purchased Services</u>				
513 Contracted Carriers				300,650.30
Total Other Purchased Services				\$300,650.30
Total 2750 Nonpublic Transportation				\$305,608.92

LEA : 114064003 Kutztown Area SD

Printed 11/30/2023 10:19:02 AM

General Fund (10)				
2800 Support Services – Central		<u>Elementary</u>	<u>Secondary</u>	<u>Federal</u> <u>Total</u>
100 <u>Personnel Services – Salaries</u>				
100 Personnel Services – Salaries				52,970.79
Total Personnel Services – Salaries				\$52,970.79
200 <u>Personnel Services – Employee Benefits</u>				
210 Group Insurance – Contracted Provider				446.52
220 Social Security Contributions				3,939.87
230 PSERS Retirement Contributions				18,496.38
240 Tuition Reimbursement				36,353.00
260 Workers' Compensation				420.04
270 Group Insurance – Self-Insurance				25,675.08
291 Other Retirement Plans				602.00
Total Personnel Services – Employee Benefits				\$85,932.89
300 <u>Purchased Professional and Technical Services</u>				
360 Employee Training and Development Services			1,734.54	10,981.12
390 Other Purchased Professional and Technical Services				8,074.98
Total Purchased Professional and Technical Services			\$1,734.54	\$19,056.10
500 <u>Other Purchased Services</u>				
580 Travel				124.85
Total Other Purchased Services				\$124.85
600 <u>Supplies</u>				
610 General Supplies				2,438.59
650 Supplies & Fees – Technology Related				6,096.37
Total Supplies				\$8,534.96
800 <u>Other Objects</u>				
810 Dues and Fees				343.28
Total Other Objects				\$343.28
Total 2800 Support Services – Central			\$1,734.54	\$166,962.87

LEA : 114064003 Kutztown Area SD

Printed 11/30/2023 10:19:02 AM

General Fund (10)

2830 Staff Services

	<u>Elementary</u>	<u>Secondary</u>	<u>Federal</u>	<u>Total</u>
100 <u>Personnel Services – Salaries</u>				
100 Personnel Services – Salaries				52,970.79
Total Personnel Services – Salaries				\$52,970.79
200 <u>Personnel Services – Employee Benefits</u>				
210 Group Insurance – Contracted Provider				446.52
220 Social Security Contributions				3,939.87
230 PSERS Retirement Contributions				18,496.38
240 Tuition Reimbursement				36,353.00
260 Workers' Compensation				420.04
270 Group Insurance – Self-Insurance				25,675.08
291 Other Retirement Plans				602.00
Total Personnel Services – Employee Benefits				\$85,932.89
300 <u>Purchased Professional and Technical Services</u>				
360 Employee Training and Development Services			1,734.54	10,981.12
390 Other Purchased Professional and Technical Services				8,074.98
Total Purchased Professional and Technical Services			\$1,734.54	\$19,056.10
500 <u>Other Purchased Services</u>				
580 Travel				124.85
Total Other Purchased Services				\$124.85
600 <u>Supplies</u>				
610 General Supplies				2,438.59
650 Supplies & Fees – Technology Related				6,096.37
Total Supplies				\$8,534.96
800 <u>Other Objects</u>				
810 Dues and Fees				343.28
Total Other Objects				\$343.28
Total 2830 Staff Services			\$1,734.54	\$166,962.87

LEA : 114064003 Kutztown Area SD

Printed 11/30/2023 10:19:02 AM

General Fund (10)				
2832 Recruitment and Placement Services	<u>Elementary</u>	<u>Secondary</u>	<u>Federal</u>	<u>Total</u>
100 <u>Personnel Services – Salaries</u>				
100 Personnel Services – Salaries				52,970.79
Total Personnel Services – Salaries				\$52,970.79
200 <u>Personnel Services – Employee Benefits</u>				
210 Group Insurance – Contracted Provider				446.52
220 Social Security Contributions				3,939.87
230 PSERS Retirement Contributions				18,496.38
260 Workers' Compensation				420.04
270 Group Insurance – Self-Insurance				25,675.08
291 Other Retirement Plans				602.00
Total Personnel Services – Employee Benefits				\$49,579.89
300 <u>Purchased Professional and Technical Services</u>				
390 Other Purchased Professional and Technical Services				8,074.98
Total Purchased Professional and Technical Services				\$8,074.98
500 <u>Other Purchased Services</u>				
580 Travel				124.85
Total Other Purchased Services				\$124.85
600 <u>Supplies</u>				
610 General Supplies				2,438.59
650 Supplies & Fees – Technology Related				6,096.37
Total Supplies				\$8,534.96
800 <u>Other Objects</u>				
810 Dues and Fees				343.28
Total Other Objects				\$343.28
Total 2832 Recruitment and Placement Services				\$119,628.75

LEA : 114064003 Kutztown Area SD

Printed 11/30/2023 10:19:02 AM

General Fund (10)

2834 Staff Development Services – Non-Instructional, Certified Staff Only	<u>Elementary</u>	<u>Secondary</u>	<u>Federal</u>	<u>Total</u>
200 <u>Personnel Services – Employee Benefits</u>				
240 Tuition Reimbursement				29,397.00
Total Personnel Services – Employee Benefits				\$29,397.00
300 <u>Purchased Professional and Technical Services</u>				
360 Employee Training and Development Services			1,734.54	6,948.35
Total Purchased Professional and Technical Services			\$1,734.54	\$6,948.35
Total 2834 Staff Development Services – Non-Instructional, Certified Staff Only			\$1,734.54	\$36,345.35

LEA : 114064003 Kutztown Area SD

Printed 11/30/2023 10:19:02 AM

General Fund (10)

2836 Staff Development Services – Non-Instructional, Non-Certified Staff Only	<u>Elementary</u>	<u>Secondary</u>	<u>Federal</u>	<u>Total</u>
200 <u>Personnel Services – Employee Benefits</u>				
240 Tuition Reimbursement				6,956.00
Total Personnel Services – Employee Benefits				\$6,956.00
300 <u>Purchased Professional and Technical Services</u>				
360 Employee Training and Development Services				4,032.77
Total Purchased Professional and Technical Services				\$4,032.77
Total 2836 Staff Development Services – Non-Instructional, Non-Certified Staff Only				\$10,988.77

LEA : 114064003 Kutztown Area SD

Printed 11/30/2023 10:19:02 AM

General Fund (10)

2900 Other Support Services	<u>Elementary</u>	<u>Secondary</u>	<u>Federal</u>	<u>Total</u>
500 <u>Other Purchased Services</u>				
595 IU Payments By Withholding				27,066.36
Total Other Purchased Services				\$27,066.36
Total 2900 Other Support Services				\$27,066.36

LEA : 114064003 Kutztown Area SD

Printed 11/30/2023 10:19:02 AM

General Fund (10)

2910 Support Services Not Listed Elsewhere In the 2000 Series

Elementary Secondary Federal Total

500 Other Purchased Services

595 IU Payments By Withholding 27,066.36

Total Other Purchased Services \$27,066.36

Total 2910 Support Services Not Listed Elsewhere In the 2000 Series \$27,066.36

LEA : 114064003 Kutztown Area SD

Printed 11/30/2023 10:19:10 AM

General Fund (10)

3000 Operation of Non-Instructional Services		Total
100 <u>Personnel Services – Salaries</u>		
100 Personnel Services – Salaries		437,578.96
Total Personnel Services – Salaries		\$437,578.96
200 <u>Personnel Services – Employee Benefits</u>		
210 Group Insurance – Contracted Provider		1,263.27
220 Social Security Contributions		32,929.70
230 PSERS Retirement Contributions		144,511.16
260 Workers' Compensation		3,399.38
270 Group Insurance – Self-Insurance		25,675.08
291 Other Retirement Plans		312.69
Total Personnel Services – Employee Benefits		\$208,091.28
300 <u>Purchased Professional and Technical Services</u>		
330 Other Professional Services		20,135.00
390 Other Purchased Professional and Technical Services		43,203.56
Total Purchased Professional and Technical Services		\$63,338.56
400 <u>Purchased Property Services</u>		
430 Repairs and Maintenance Services		6,256.58
440 Rentals		8,120.61
Total Purchased Property Services		\$14,377.19
500 <u>Other Purchased Services</u>		
510 Student Transportation Services		53,280.09
520 Insurance – General		12,722.00
580 Travel		3,640.26
591 Services Purchased Locally		18,345.95
Total Other Purchased Services		\$87,988.30
600 <u>Supplies</u>		
610 General Supplies		93,608.61
620 Energy		151.92
630 Food		1,479.67
640 Books and Periodicals		2,908.79
650 Supplies & Fees – Technology Related		9,358.00
Total Supplies		\$107,506.99
700 <u>Property</u>		
752 Capital Equipment – Original and Additional		5,469.27
762 Capitalized Equipment - Replacement		15,815.42
Total Property		\$21,284.69
800 <u>Other Objects</u>		
810 Dues and Fees		10,024.90
860 Grants To Municipal and Community Service Organizations		4,536.10
890 Miscellaneous Expenditures		20,640.97
Total Other Objects		\$35,201.97
Total 3000 Operation of Non-Instructional Services		\$975,367.94

LEA : 114064003 Kutztown Area SD

Printed 11/30/2023 10:19:10 AM

General Fund (10)				
3200 Student Activities	<u>Elementary</u>	<u>Secondary</u>	<u>Federal</u>	<u>Total</u>
100 <u>Personnel Services – Salaries</u>				
100 Personnel Services – Salaries				437,578.96
Total Personnel Services – Salaries				\$437,578.96
200 <u>Personnel Services – Employee Benefits</u>				
210 Group Insurance – Contracted Provider				1,263.27
220 Social Security Contributions				32,929.70
230 PSERS Retirement Contributions				144,511.16
260 Workers' Compensation				3,399.38
270 Group Insurance – Self-Insurance				25,675.08
291 Other Retirement Plans				312.69
Total Personnel Services – Employee Benefits				\$208,091.28
300 <u>Purchased Professional and Technical Services</u>				
330 Other Professional Services				20,135.00
390 Other Purchased Professional and Technical Services				43,203.56
Total Purchased Professional and Technical Services				\$63,338.56
400 <u>Purchased Property Services</u>				
430 Repairs and Maintenance Services				6,256.58
440 Rentals				8,120.61
Total Purchased Property Services				\$14,377.19
500 <u>Other Purchased Services</u>				
510 Student Transportation Services				53,280.09
520 Insurance – General				12,722.00
580 Travel				3,640.26
Total Other Purchased Services				\$69,642.35
600 <u>Supplies</u>				
610 General Supplies			61.53	93,214.13
620 Energy				151.92
630 Food				1,479.67
650 Supplies & Fees – Technology Related				9,358.00
Total Supplies			\$61.53	\$104,203.72
700 <u>Property</u>				
752 Capital Equipment – Original and Additional				5,469.27
762 Capitalized Equipment - Replacement				15,815.42
Total Property				\$21,284.69
800 <u>Other Objects</u>				
810 Dues and Fees				10,024.90
Total Other Objects				\$10,024.90
Total 3200 Student Activities			\$61.53	\$928,541.65

LEA : 114064003 Kutztown Area SD

Printed 11/30/2023 10:19:10 AM

General Fund (10)

3300 Community Services	<u>Elementary</u>	<u>Secondary</u>	<u>Federal</u>	<u>Total</u>
500 <u>Other Purchased Services</u>				
591 Services Purchased Locally				18,345.95
Total Other Purchased Services				\$18,345.95
600 <u>Supplies</u>				
610 General Supplies			394.48	394.48
640 Books and Periodicals			2,908.79	2,908.79
Total Supplies			\$3,303.27	\$3,303.27
800 <u>Other Objects</u>				
860 Grants To Municipal and Community Service Organizations				4,536.10
Total Other Objects				\$4,536.10
Total 3300 Community Services			\$3,303.27	\$26,185.32

LEA : 114064003 Kutztown Area SD

Printed 11/30/2023 10:19:10 AM

General Fund (10)				
3400 Scholarships and Awards	<u>Elementary</u>	<u>Secondary</u>	<u>Federal</u>	<u>Total</u>
800 <u>Other Objects</u>				
890 Miscellaneous Expenditures				20,640.97
Total Other Objects				\$20,640.97
Total 3400 Scholarships and Awards				\$20,640.97

LEA : 114064003 Kutztown Area SD

Printed 11/30/2023 10:19:19 AM

General Fund (10)

4000 Facilities Acquisition, Construction and Improvement Services		<u>Total</u>
400 <u>Purchased Property Services</u>		
450 Construction Services	2,008.31	
Total Purchased Property Services	\$2,008.31	
600 <u>Supplies</u>		
610 General Supplies	64,460.01	
Total Supplies	\$64,460.01	
Total 4000 Facilities Acquisition, Construction and Improvement Services	\$66,468.32	

LEA : 114064003 Kutztown Area SD

Printed 11/30/2023 10:19:19 AM

General Fund (10)

4200 Existing Site Improvement Services	<u>Elementary</u>	<u>Secondary</u>	<u>Federal</u>	<u>Total</u>
400 <u>Purchased Property Services</u>				
450 Construction Services				2,008.31
Total Purchased Property Services				\$2,008.31
600 <u>Supplies</u>				
610 General Supplies				64,460.01
Total Supplies				\$64,460.01
Total 4200 Existing Site Improvement Services				\$66,468.32

LEA : 114064003 Kutztown Area SD

Printed 11/30/2023 10:19:29 AM

General Fund (10)	
5000 Other Expenditures and Financing Uses	<u>Total</u>
800 <u>Other Objects</u>	
830 Interest	646,336.90
Total Other Objects	\$646,336.90
900 <u>Other Uses of Funds</u>	
910 Redemption of Principal	1,827,746.55
939 Other Fund Transfers	374,526.37
Total Other Uses of Funds	\$2,202,272.92
Total 5000 Other Expenditures and Financing Uses	\$2,848,609.82

LEA : 114064003 Kutztown Area SD

Printed 11/30/2023 10:19:29 AM

General Fund (10)

5100 Debt Service / Other Expenditures and Financing Uses	<u>Elementary</u>	<u>Secondary</u>	<u>Federal</u>	<u>Total</u>
800 <u>Other Objects</u>				
830 Interest				646,336.90
Total Other Objects				\$646,336.90
900 <u>Other Uses of Funds</u>				
910 Redemption of Principal				1,827,746.55
Total Other Uses of Funds				\$1,827,746.55
Total 5100 Debt Service / Other Expenditures and Financing Uses				\$2,474,083.45

LEA : 114064003 Kutztown Area SD

Printed 11/30/2023 10:19:29 AM

General Fund (10)				
5110 Debt Service	<u>Elementary</u>	<u>Secondary</u>	<u>Federal</u>	<u>Total</u>
800 <u>Other Objects</u>				
830 Interest				646,148.67
Total Other Objects				\$646,148.67
900 <u>Other Uses of Funds</u>				
910 Redemption of Principal				1,796,115.93
Total Other Uses of Funds				\$1,796,115.93
Total 5110 Debt Service				\$2,442,264.60

LEA : 114064003 Kutztown Area SD

Printed 11/30/2023 10:19:29 AM

General Fund (10)

5140 Leases and Other Right-to-Use Arrangements	<u>Elementary</u>	<u>Secondary</u>	<u>Federal</u>	<u>Total</u>
800 <u>Other Objects</u>				
830 Interest				188.23
Total Other Objects				\$188.23
900 <u>Other Uses of Funds</u>				
910 Redemption of Principal				31,630.62
Total Other Uses of Funds				\$31,630.62
Total 5140 Leases and Other Right-to-Use Arrangements				\$31,818.85

LEA : 114064003 Kutztown Area SD

Printed 11/30/2023 10:19:29 AM

General Fund (10)

5200 Interfund Transfers – Out	<u>Elementary</u>	<u>Secondary</u>	<u>Federal</u>	<u>Total</u>
900 <u>Other Uses of Funds</u>				
939 Other Fund Transfers				374,526.37
Total Other Uses of Funds				\$374,526.37
Total 5200 Interfund Transfers – Out				\$374,526.37

LEA : 114064003 Kutztown Area SD

Printed 11/30/2023 10:19:29 AM

General Fund (10)

5230 Capital Projects Fund Transfers	<u>Elementary</u>	<u>Secondary</u>	<u>Federal</u>	<u>Total</u>
900 <u>Other Uses of Funds</u>				
939 Other Fund Transfers				372,785.11
Total Other Uses of Funds				\$372,785.11
Total 5230 Capital Projects Fund Transfers				\$372,785.11

LEA : 114064003 Kutztown Area SD

Printed 11/30/2023 10:19:29 AM

General Fund (10)

5250 Enterprise Fund Transfers	<u>Elementary</u>	<u>Secondary</u>	<u>Federal</u>	<u>Total</u>
900 <u>Other Uses of Funds</u>				
939 Other Fund Transfers				1,741.26
Total Other Uses of Funds				\$1,741.26
Total 5250 Enterprise Fund Transfers				\$1,741.26

LEA : 114064003 Kutztown Area SD

Printed 11/30/2023 10:19:15 AM

Student Sponsored Activity Fund (21)

3000 Operation of Non-Instructional Services

Total

600 Supplies

610 General Supplies

321,065.42

Total Supplies	\$321,065.42
Total 3000 Operation of Non-Instructional Services	\$321,065.42

LEA : 114064003 Kutztown Area SD

Printed 11/30/2023 10:19:15 AM

Student Sponsored Activity Fund (21)

3200 Student Activities	<u>Elementary</u>	<u>Secondary</u>	<u>Federal</u>	<u>Total</u>
600 <u>Supplies</u>				
610 General Supplies				321,065.42
Total Supplies				\$321,065.42
Total 3200 Student Activities				\$321,065.42

LEA : 114064003 Kutztown Area SD

Printed 11/30/2023 10:19:06 AM

Other Capital Projects Fund (39)

2000 Support Services		<u>Total</u>
400 <u>Purchased Property Services</u>		
430 Repairs and Maintenance Services	1,660.00	
Total Purchased Property Services	\$1,660.00	
600 <u>Supplies</u>		
650 Supplies & Fees – Technology Related	20,508.75	
Total Supplies	\$20,508.75	
700 <u>Property</u>		
752 Capital Equipment – Original and Additional	286,810.79	
Total Property	\$286,810.79	
Total 2000 Support Services	\$308,979.54	

LEA : 114064003 Kutztown Area SD

Printed 11/30/2023 10:19:06 AM

Other Capital Projects Fund (39)

2200 Support Services – Instructional Staff

	<u>Elementary</u>	<u>Secondary</u>	<u>Federal</u>	<u>Total</u>
600 <u>Supplies</u>				
650 Supplies & Fees – Technology Related		20,508.75		20,508.75
Total Supplies		\$20,508.75		\$20,508.75
700 <u>Property</u>				
752 Capital Equipment – Original and Additional		213,807.58		213,807.58
Total Property		\$213,807.58		\$213,807.58
Total 2200 Support Services – Instructional Staff		\$234,316.33		\$234,316.33

LEA : 114064003 Kutztown Area SD

Printed 11/30/2023 10:19:06 AM

Other Capital Projects Fund (39)

2240 Computer-Assisted Instruction Support Services	<u>Elementary</u>	<u>Secondary</u>	<u>Federal</u>	<u>Total</u>
600 <u>Supplies</u>				
650 Supplies & Fees – Technology Related		20,508.75		20,508.75
Total Supplies		\$20,508.75		\$20,508.75
700 <u>Property</u>				
752 Capital Equipment – Original and Additional		213,807.58		213,807.58
Total Property		\$213,807.58		\$213,807.58
Total 2240 Computer-Assisted Instruction Support Services		\$234,316.33		\$234,316.33

LEA : 114064003 Kutztown Area SD

Printed 11/30/2023 10:19:06 AM

Other Capital Projects Fund (39)

2600 Operation and Maintenance of Plant Services	<u>Elementary</u>	<u>Secondary</u>	<u>Federal</u>	<u>Total</u>
400 <u>Purchased Property Services</u>				
430 Repairs and Maintenance Services				1,660.00
Total Purchased Property Services				\$1,660.00
700 <u>Property</u>				
752 Capital Equipment – Original and Additional				73,003.21
Total Property				\$73,003.21
Total 2600 Operation and Maintenance of Plant Services				\$74,663.21

LEA : 114064003 Kutztown Area SD

Printed 11/30/2023 10:19:06 AM

Other Capital Projects Fund (39)

2620 Operation of Buildings Services	<u>Elementary</u>	<u>Secondary</u>	<u>Federal</u>	<u>Total</u>
400 <u>Purchased Property Services</u>				
430 Repairs and Maintenance Services				1,660.00
Total Purchased Property Services				\$1,660.00
700 <u>Property</u>				
752 Capital Equipment – Original and Additional				73,003.21
Total Property				\$73,003.21
Total 2620 Operation of Buildings Services				\$74,663.21

LEA : 114064003 Kutztown Area SD

Printed 11/30/2023 10:19:23 AM

Other Capital Projects Fund (39)

4000 Facilities Acquisition, Construction and Improvement Services

Total

400 <u>Purchased Property Services</u>	
450 Construction Services	83,171.17
Total Purchased Property Services	\$83,171.17
700 <u>Property</u>	
710 Land and Improvements	8,230.00
762 Capitalized Equipment - Replacement	198,927.18
Total Property	\$207,157.18
Total 4000 Facilities Acquisition, Construction and Improvement Services	\$290,328.35

LEA : 114064003 Kutztown Area SD

Printed 11/30/2023 10:19:23 AM

Other Capital Projects Fund (39)

4100 Site Acquisition Services – Original and Additional

Elementary

Secondary

Federal

Total

700 Property

710 Land and Improvements

8,230.00

Total Property

\$8,230.00

Total 4100 Site Acquisition Services – Original and Additional

\$8,230.00

LEA : 114064003 Kutztown Area SD

Printed 11/30/2023 10:19:23 AM

Other Capital Projects Fund (39)

4600 Existing Building Improvement Services	<u>Elementary</u>	<u>Secondary</u>	<u>Federal</u>	<u>Total</u>
400 <u>Purchased Property Services</u>				
450 Construction Services				83,171.17
Total Purchased Property Services				\$83,171.17
700 <u>Property</u>				
762 Capitalized Equipment - Replacement				198,927.18
Total Property				\$198,927.18
Total 4600 Existing Building Improvement Services				\$282,098.35

LEA : 114064003 Kutztown Area SD

Printed 11/30/2023 10:19:32 AM

	<u>General Fund(10)</u>	<u>Student Sponsored Activity Fund(21)</u>	<u>Public Purpose Trust(27)</u>	<u>Other Compt Approved (28)</u>	<u>Athletic / Activity(29)</u>
1000 <u>Instruction</u>					
1100 Regular Programs - Elementary / Secondary	15,129,351.29				
1200 Special Programs - Elementary / Secondary	4,881,908.29				
1300 Vocational Education	998,878.17				
1400 Other Instructional Programs - Elementary / Secondary	110,385.33				
1500 Nonpublic School Programs	1,408.00				
1600 Adult Education Programs	4,250.00				
Total Instruction	\$21,126,181.08				
2000 <u>Support Services</u>					
2100 Support Services - Students	1,470,277.08				
2200 Support Services - Instructional Staff	2,637,118.25				
2300 Support Services - Administration	2,270,441.20				
2400 Support Services - Pupil Health	654,690.65				
2500 Support Services - Business	462,286.07				
2600 Operation and Maintenance of Plant Services	3,213,298.80				
2700 Student Transportation Services	1,558,574.89				
2800 Support Services - Central	166,962.87				
2900 Other Support Services	27,066.36				
Total Support Services	\$12,460,716.17				
3000 <u>Operation of Non-Instructional Services</u>					
3200 Student Activities	928,541.65	321,065.42			
3300 Community Services	26,185.32				
3400 Scholarships and Awards	20,640.97				
Total Operation of Non-Instructional Services	\$975,367.94	\$321,065.42			
4000 <u>Facilities Acquisition, Construction and Improvement Services</u>					
4100 Site Acquisition Services - Original and Additional					
4200 Existing Site Improvement Services	66,468.32				
4600 Existing Building Improvement Services					
Total Facilities Acquisition, Construction and Improvement Services	\$66,468.32				
5000 <u>Other Expenditures and Financing Uses</u>					
5100 Debt Service / Other Expenditures and Financing Uses	2,474,083.45				
5200 Interfund Transfers - Out	374,526.37				
Total Other Expenditures and Financing Uses	\$2,848,609.82				
TOTAL ACTUAL EXPENDITURES & OTHER FINANCING USES	\$37,477,343.33	\$321,065.42			

LEA : 114064003 Kutztown Area SD

Printed 11/30/2023 10:19:32 AM

	<u>Capital Reserve (690.1850)(31)</u>	<u>Capital Reserve (1431)(32)</u>	<u>Other Capital Projects Fund(39)</u>	<u>Debt Service(40)</u>	<u>Permanent(90)</u>
1000 <u>Instruction</u>					
1100 Regular Programs - Elementary / Secondary					
1200 Special Programs - Elementary / Secondary					
1300 Vocational Education					
1400 Other Instructional Programs - Elementary / Secondary					
1500 Nonpublic School Programs					
1600 Adult Education Programs					
Total Instruction					
2000 <u>Support Services</u>					
2100 Support Services - Students					
2200 Support Services - Instructional Staff			234,316.33		
2300 Support Services - Administration					
2400 Support Services - Pupil Health					
2500 Support Services - Business					
2600 Operation and Maintenance of Plant Services			74,663.21		
2700 Student Transportation Services					
2800 Support Services - Central					
2900 Other Support Services					
Total Support Services			\$308,979.54		
3000 <u>Operation of Non-Instructional Services</u>					
3200 Student Activities					
3300 Community Services					
3400 Scholarships and Awards					
Total Operation of Non-Instructional Services					
4000 <u>Facilities Acquisition, Construction and Improvement Services</u>					
4100 Site Acquisition Services - Original and Additional			8,230.00		
4200 Existing Site Improvement Services					
4600 Existing Building Improvement Services			282,098.35		
Total Facilities Acquisition, Construction and Improvement Services			\$290,328.35		
5000 <u>Other Expenditures and Financing Uses</u>					
5100 Debt Service / Other Expenditures and Financing Uses					
5200 Interfund Transfers - Out					
Total Other Expenditures and Financing Uses					
TOTAL ACTUAL EXPENDITURES & OTHER FINANCING USES			\$599,307.89		

LEA : 114064003 Kutztown Area SD

Printed 11/30/2023 10:19:32 AM

	<u>Total</u>
1000 <u>Instruction</u>	
1100 Regular Programs - Elementary / Secondary	15,129,351.29
1200 Special Programs - Elementary / Secondary	4,881,908.29
1300 Vocational Education	998,878.17
1400 Other Instructional Programs - Elementary / Secondary	110,385.33
1500 Nonpublic School Programs	1,408.00
1600 Adult Education Programs	4,250.00
Total Instruction	\$21,126,181.08
2000 <u>Support Services</u>	
2100 Support Services - Students	1,470,277.08
2200 Support Services - Instructional Staff	2,871,434.58
2300 Support Services - Administration	2,270,441.20
2400 Support Services - Pupil Health	654,690.65
2500 Support Services - Business	462,286.07
2600 Operation and Maintenance of Plant Services	3,287,962.01
2700 Student Transportation Services	1,558,574.89
2800 Support Services - Central	166,962.87
2900 Other Support Services	27,066.36
Total Support Services	\$12,769,695.71
3000 <u>Operation of Non-Instructional Services</u>	
3200 Student Activities	1,249,607.07
3300 Community Services	26,185.32
3400 Scholarships and Awards	20,640.97
Total Operation of Non-Instructional Services	\$1,296,433.36
4000 <u>Facilities Acquisition, Construction and Improvement Services</u>	
4100 Site Acquisition Services - Original and Additional	8,230.00
4200 Existing Site Improvement Services	66,468.32
4600 Existing Building Improvement Services	282,098.35
Total Facilities Acquisition, Construction and Improvement Services	\$356,796.67
5000 <u>Other Expenditures and Financing Uses</u>	
5100 Debt Service / Other Expenditures and Financing Uses	2,474,083.45
5200 Interfund Transfers - Out	374,526.37
Total Other Expenditures and Financing Uses	\$2,848,609.82
TOTAL ACTUAL EXPENDITURES & OTHER FINANCING USES	\$38,397,716.64

LEA : 114064003 Kutztown Area SD

Printed 11/30/2023 10:19:45 AM

PSERS Salary Data (Salary Data should relate to the General Fund only)

Amount	Description	Amount
	Total Salary Base for salaries subject to PSERS withholding	15,172,332.07
	Total Federally Funded salaries subject to PSERS withholding	756,087.80

Title I Expenditure Data

Amount	Description	Amount
	Expenditures Funded with Current Title I Funds	259,764.28
	Expenditures Funded with Carry over Title I Funds	2,712.87
Total	Title I Expenditure Data	\$262,477.15

Title IV Revenue Data

Amount	Description	Amount
	Revenue from Title IV-A-1: Student Support and Academic Enrichment Grants	16,278.00
	Revenue from Title IV-B: 21st Century Community Learning Centers	732.84

Title V Revenue Data

Amount	Description	Amount
	Revenue from Title V-B-2: Rural and Low-Income School Programs	
	Revenue from Title V-B-1: Small Rural School Achievement (Directly from the Federal Govt)	

1 .	<u>Current Special Education Expenditures within Function 1000</u> See list of exclusions in the note below.	3,683,515.17
2 .	<u>Current Special Education Expenditures within Function 2000</u> See list of exclusions in the note below.	492,583.62
2A.	<u>Current Special Education Expenditures within Sub-Function 2100</u> This data should also be included in line 2 above. See list of exclusions in the note below.	
2B.	<u>Current Special Education Expenditures within Sub-Function 2200</u> This data should also be included in line 2 above. See list of exclusions in the note below.	282,036.58
2C.	<u>Current Special Education Expenditures within Sub-Function 2700</u> This data should also be included in line 2 above. See list of exclusions in the note below.	210,547.04
3.	<u>Current Special Education Expenditures within Sub-Function 3100</u> See list of exclusions in the note below.	
4.	<u>Current Special Education Expenditures within Sub-Function 3200</u> See list of exclusions in the note below.	

Note: The Current Special Education Expenditure amounts for each line should be calculated as follows:

- * Include the total expenditures for special education costs from all governmental funds and the food service fund 51 for the function/sub-function requested
- * Exclude data from sub-functions: 1243,1450,1500,1600,1807,2280,2450,2750,2990
- * Exclude data from objects: 322,511,512,516,561,562,564,566,592,593,594,595,596,597,700,830,899

Benefits for Staff Relative to Collective Bargaining Agreements

	OBJECT	COVERED	NOT COVERED	TOTAL
10 General Fund				
	211 Medical Insurance			
	212 Dental Insurance	28,108.75	14,245.83	42,354.58
	215 Eye Care Insurance	10,088.81	6,284.93	16,373.74
	216 Prescription Insurance			
	271 Self-Insurance Medical Benefits	1,753,281.74	889,894.81	2,643,176.55
	272 Self-Insurance Dental Benefits			
	275 Self-Insurance Eye Care Benefits			
	276 Self-Insurance Prescription Benefits			
	FUND TOTAL	\$1,791,479.30	\$910,425.57	\$2,701,904.87
50 Enterprise Fund				
	211 Medical Insurance			
	212 Dental Insurance		916.86	916.86
	215 Eye Care Insurance		376.96	376.96
	216 Prescription Insurance			
	271 Self-Insurance Medical Benefits		62,386.94	62,386.94
	272 Self-Insurance Dental Benefits			
	275 Self-Insurance Eye Care Benefits			
	276 Self-Insurance Prescription Benefits			
	FUND TOTAL		\$63,680.76	\$63,680.76
60 Internal Service Fund	No Self Insurance data to report			
	211 Medical Insurance			
	212 Dental Insurance			
	215 Eye Care Insurance			
	216 Prescription Insurance			
	271 Self-Insurance Medical Benefits			
	272 Self-Insurance Dental Benefits			
	275 Self-Insurance Eye Care Benefits			
	276 Self-Insurance Prescription Benefits			
	FUND TOTAL			
Total of All Funds		\$1,791,479.30	\$974,106.33	\$2,765,585.63

LEA : 114064003 Kutztown Area SD

Printed 11/30/2023 10:19:56 AM

Function	Special Education (Prior Year)	Nonspecial Education (Prior Year)	Total (Prior Year)	Special Education (Current Year)	Nonspecial Education (Current Year)	Total (Current Year)
2120 Guidance Services	183,529.80	657,150.29	840,680.09	199,285.04	706,556.06	905,841.10
2140 Psychological Services	163,524.64		163,524.64	293,084.25		293,084.25
2150 Speech Pathology and Audiology Services						
2160 Social Work Services				22,844.42	80,993.86	103,838.28
2260 Instruction and Curriculum Development Services	62,057.15	222,203.02	284,260.17	347,704.50	222,618.81	570,323.31
2350 Legal and Accounting Services	6,750.00	25,344.50	32,094.50	7,180.00	29,426.00	36,606.00
2420 Medical Services	32,090.77	114,904.81	146,995.58	37,433.33	132,718.17	170,151.50
2440 Nursing Services	113,137.30	405,101.57	518,238.87	104,611.73	370,896.12	475,507.85
2700 Student Transportation Services	500,348.70	1,044,336.90	1,544,685.60	507,113.17	1,051,461.72	1,558,574.89
Total	\$1,061,438.36	\$2,469,041.09	\$3,530,479.45	\$1,519,256.44	\$2,594,670.74	\$4,113,927.18

LEA : 114064003 Kutztown Area SD

(PRINCIPAL AMOUNTS ONLY)								
<u>GOVERNMENTAL FUNDS/ ACTIVITIES</u>	Short-Term Borrowing	General Obligation Bonds/Notes	Authority Building Obligations	Leases, Other Right to Use Arrangements	Extended Term Financing Agreements	Other Long Term Debt/Liabilities	OPEB, Comp Abs, Net Pension Liab	Total
1. Debt at Beginning of Fiscal Year		27,810,000.00		54,672.00	461,750.00		45,051,894.00	73,378,316.00
2. Additional Debt Incurred During Year				45,176.00	118,048.00		8,572,309.00	8,735,533.00
3. Retirements and Repayments		1,600,000.00		31,631.00	196,116.00		5,850,963.00	7,678,710.00
4. Debt at End of Fiscal Year		26,210,000.00		68,217.00	383,682.00		47,773,240.00	74,435,139.00
5. Accreted Interest at End Of Fiscal Year								
6. Total Debt and Accreted Interest		26,210,000.00		68,217.00	383,682.00		47,773,240.00	74,435,139.00
7. Current Portion P&I - Due within 1 year		2,237,004.00		29,322.00	209,960.00		86,563.00	2,562,849.00
8. Interest Paid during current fiscal year		641,264.00						641,264.00

(PRINCIPAL AMOUNTS ONLY)								
<u>PROPRIETARY FUNDS</u>	Short-Term Borrowing	General Obligation Bonds/Notes	Authority Building Obligations	Leases, Other Right to Use Arrangements	Extended Term Financing Agreements	Other Long Term Debt/Liabilities	OPEB, Comp Abs, Net Pension Liab	Total
1. Debt at Beginning of Fiscal Year							567,458.00	567,458.00
2. Additional Debt Incurred During Year							238,893.00	238,893.00
3. Retirements and Repayments							88,993.00	88,993.00
4. Debt at End of Fiscal Year							717,358.00	717,358.00
5. Accreted Interest at End Of Fiscal Year								
6. Total Debt and Accreted Interest							717,358.00	717,358.00
7. Current Portion P&I - Due within 1 year								
8. Interest Paid during current fiscal year								

LEA : 114064003 Kutztown Area SD

Total Principal and Interest Payments Made by Your School - All Funds

Function	Fund		Principal (910)	Principal (920)	Interest (830)	Total (Principal +Interest)	Misc Other Uses (990)
5110	10	General Fund	1,796,115.93		646,148.67	2,442,264.60	
5110	20	Special Revenue Funds					
5110	30	Capital Projects Funds					
5110	40	Debt Service Fund					
5110	90	Permanent Fund					
5120	10	General Fund					
5120	20	Special Revenue Funds					
5120	30	Capital Projects Funds					
5120	40	Debt Service Fund					
5140	10	General Fund	31,630.62		188.23	31,818.85	
5140	20	Special Revenue Funds					
5140	30	Capital Projects Funds					
5140	40	Debt Service Fund					
5140	90	Permanent Fund					
Total Debt Payments - Governmental Funds			\$1,827,746.55		\$646,336.90	\$2,474,083.45	

Function	Fund		Principal (910)	Principal (920)	Interest (830)	Total (Principal +Interest)
5110	50	Enterprise Fund				
5110	60	Internal Service Fund				
5120	50	Enterprise Fund				
5120	60	Internal Service Fund				
5140	50	Enterprise Fund				
5140	60	Internal Service Fund				
Total Debt Payments - Proprietary Funds						

LEA : 114064003 Kutztown Area SD

Debt Category	Debt Issue Date (MM/YYYY)	Principal Amounts Only				Current Portion Due Within One Year (Principal and Interest)	Interest Paid During Fiscal Year
		Debt at Beginning of Fiscal Year	Additions	Reductions / Repayments	Debt at End of Fiscal Year		
General Obligation Bonds/Notes – CIB	06/2021	6,495,000.00		5,000.00	6,490,000.00	260,900.00	255,950.00
General Obligation Bonds/Notes – CIB	06/2021	5,795,000.00		5,000.00	5,790,000.00	109,220.00	104,310.00
General Obligation Bonds/Notes – CIB	06/2021	8,775,000.00		1,535,000.00	7,240,000.00	1,633,260.00	100,912.00
General Obligation Bonds/Notes – CIB	12/2019	6,745,000.00		55,000.00	6,690,000.00	233,624.00	180,092.00
Leases and Other Right to Use Arrangements		54,672.00	45,176.00	31,631.00	68,217.00	29,322.00	
Extended Term Financing Agreements		461,750.00	118,048.00	196,116.00	383,682.00	209,960.00	
Compensated Absences		764,083.00	73,304.00	124,912.00	712,475.00	86,563.00	
Other Post-Employment Benefits (OPEB)		4,279,453.00		822,189.00	3,457,264.00		
Net Pension Liability		40,008,358.00	8,499,005.00	4,903,862.00	43,603,501.00		
Totals for Debt Entered:		\$73,378,316.00	\$8,735,533.00	\$7,678,710.00	\$74,435,139.00	\$2,562,849.00	\$641,264.00

Debt Category	Debt Issue Date (MM/YYYY)	Principal Amounts Only				Current Portion Due Within One Year (Principal and Interest)	Interest Paid During Fiscal Year
		Debt at Beginning of Fiscal Year	Additions	Reductions / Repayments	Debt at End of Fiscal Year		
Net Pension Liability		514,642.00	238,893.00	76,036.00	677,499.00		
Other Post-Employment Benefits (OPEB)		52,816.00		12,957.00	39,859.00		
Totals for Debt Entered:		\$567,458.00	\$238,893.00	\$88,993.00	\$717,358.00		

LEA : 114064003 Kutztown Area SD

General Fund (10)

Section 1: Tuition/Purchased Services as Reported within Expenditure Detail	Amount
Tuition Reported in General Fund Expenditures 1000-560	3,208,471.78
Purchased Services in General Fund Expenditures 1000-594 and 1000-597	
Section 1 Total	\$3,208,471.78

Section 2: Tuition Paid to Institution Types During Fiscal Year	Tuition Paid For Nonspecial Education	Tuition Paid For Special Education	Total
1 1306 Institutions			
2 Institutionalized Children's Programs			
3 Juveniles Incarcerated in Adult Facilities			
4 Residential Treatment Facilities			
5 Other Local Education Agencies	15,359.92		15,359.92
6 Brick and Mortar Charter Schools	664,193.11	234,380.70	898,573.81
7 Cyber Charter Schools	577,715.90	592,443.74	1,170,159.64
8 Career and Technology Centers	543,830.04	89,489.05	633,319.09
9 Approved Private Schools		28,105.26	28,105.26
10 PA Chartered Schools for the Deaf and Blind			
11 Private Residential Rehabilitative Institutions	4,135.52	120.00	4,255.52
12 Juvenile Detention Centers			
13 Special Program Jointures			
14 Other Tuition Not Included Elsewhere In This Section	120,320.00	338,378.54	458,698.54
Section 2 Total	\$1,925,554.49	\$1,282,917.29	\$3,208,471.78

1 .	<u>Student Transportation Services for Educational Field Trips</u>	24,505.57
2 .	<u>Student Transportation Services for Student Activities</u>	53,280.09
3 .	<u>Rental of Vehicles for Student Transportation Services</u>	
4 .	<u>Capital Reserve Funds</u>	

Include only district-owned transportation expenditures paid from State or local money.
DO NOT include federal expenditures or payments to contract service providers.
Contracted transportation services should not be recorded on this schedule.

LEA : 114064003 Kutztown Area SD

Printed 11/30/2023 10:20:14 AM

Food Service / Cafeteria Operations Fund (51)

3000 Operation of Non-Instructional Services		Total
100 <u>Personnel Services – Salaries</u>		
100 Personnel Services – Salaries		269,289.07
Total Personnel Services – Salaries		\$269,289.07
200 <u>Personnel Services – Employee Benefits</u>		
210 Group Insurance – Contracted Provider		1,474.96
220 Social Security Contributions		19,921.13
230 PSERS Retirement Contributions		34,935.15
260 Workers' Compensation		2,114.76
270 Group Insurance – Self-Insurance		62,386.94
280 Other Post-Employment Benefits (OPEB)		(6,126.00)
291 Other Retirement Plans		515.41
Total Personnel Services – Employee Benefits		\$115,222.35
300 <u>Purchased Professional and Technical Services</u>		
340 Technical Services		3,025.73
390 Other Purchased Professional and Technical Services		220.00
Total Purchased Professional and Technical Services		\$3,245.73
400 <u>Purchased Property Services</u>		
440 Rentals		14,337.03
Total Purchased Property Services		\$14,337.03
500 <u>Other Purchased Services</u>		
580 Travel		987.03
599 Other Miscellaneous Purchased Services		805.00
Total Other Purchased Services		\$1,792.03
600 <u>Supplies</u>		
610 General Supplies		33,752.62
620 Energy		1,932.70
630 Food		341,415.98
650 Supplies & Fees – Technology Related		8,259.40
Total Supplies		\$385,360.70
700 <u>Property</u>		
740 Depreciation		20,502.55
Total Property		\$20,502.55
800 <u>Other Objects</u>		
810 Dues and Fees		597.03
Total Other Objects		\$597.03
Total 3000 Operation of Non-Instructional Services		\$810,346.49

LEA : 114064003 Kutztown Area SD

Printed 11/30/2023 10:20:14 AM

Food Service / Cafeteria Operations Fund (51)

3100 Food Services	Elementary	Secondary	Federal	Total
100 <u>Personnel Services – Salaries</u>				
100 Personnel Services – Salaries				269,289.07
Total Personnel Services – Salaries				\$269,289.07
200 <u>Personnel Services – Employee Benefits</u>				
210 Group Insurance – Contracted Provider				1,474.96
220 Social Security Contributions				19,921.13
230 PSERS Retirement Contributions				34,935.15
260 Workers' Compensation				2,114.76
270 Group Insurance – Self-Insurance				62,386.94
280 Other Post-Employment Benefits (OPEB)				(6,126.00)
291 Other Retirement Plans				515.41
Total Personnel Services – Employee Benefits				\$115,222.35
300 <u>Purchased Professional and Technical Services</u>				
340 Technical Services				3,025.73
390 Other Purchased Professional and Technical Services				220.00
Total Purchased Professional and Technical Services				\$3,245.73
400 <u>Purchased Property Services</u>				
440 Rentals				14,337.03
Total Purchased Property Services				\$14,337.03
500 <u>Other Purchased Services</u>				
580 Travel				987.03
599 Other Miscellaneous Purchased Services				805.00
Total Other Purchased Services				\$1,792.03
600 <u>Supplies</u>				
610 General Supplies				33,752.62
620 Energy				1,932.70
630 Food				341,415.98
650 Supplies & Fees – Technology Related				8,259.40
Total Supplies				\$385,360.70
700 <u>Property</u>				
740 Depreciation				20,502.55
Total Property				\$20,502.55
800 <u>Other Objects</u>				
810 Dues and Fees				597.03
Total Other Objects				\$597.03
Total 3100 Food Services				\$810,346.49

	<u>Food Service(51)</u>	<u>Child Care Operations(52)</u>	<u>Other Enterprise(58)</u>	<u>Internal Service(60)</u>	<u>Total</u>
3000 <u>Operation of Non-Instructional Services</u>					
3100 Food Services	810,346.49				810,346.49
Total Operation of Non-Instructional Services	\$810,346.49				\$810,346.49
TOTAL ACTUAL EXPENDITURES & OTHER FINANCING USES	\$810,346.49				\$810,346.49

LEA : 114064003 Kutztown Area SD

Printed 11/30/2023 10:20:26 AM

Fund	School	School Number	Local Personnel	Local Nonpersonnel	State Personnel	State Nonpersonnel	Federal Personnel	Federal Nonpersonnel	Total	Explanation
10										
	Greenwich-Lenhartsville El Sch	810	4,396,068.16	831,802.32	0.01	0.01	105,364.78	32,821.45	5,366,056.73	
	Kutztown Area MS	6315	5,618,143.45	1,082,072.27	0.01	18,333.33	222,688.81	32,999.03	6,974,236.90	
	Kutztown Area SHS	816	7,875,620.81	1,885,563.48	0.01	73,333.37	254,474.86	41,762.38	10,130,754.91	
	Kutztown El Sch	6316	5,882,027.31	1,307,048.26	140,805.00	0.01	396,934.87	46,929.61	7,773,745.06	
Total			23,771,859.73	5,106,486.33	140,805.03	91,666.72	979,463.32	154,512.47	30,244,793.60	