

ANNUAL REPORT is published by the Columbia Public School District as a public service to the parents of school-age children and district residents. The Columbia Public School District does not discriminate on the basis of race, color, religion, gender, gender identity, gender expression, sexual orientation, national origin, ancestry, disability, age, or use of leave protected by the Family and Medical Leave Act, in its programs, activities, or with regard to employment. The Columbia Board of Education is an equal opportunity employer. Inquiries regarding Columbia Public Schools' compliance with IDEA and Section 504 regulations should contact Special Services at 1818 W. Worley Street, Columbia, MO 65203.

Aslin Administration Building
1818 W. Worley Street
Columbia, MO 65203



ECRWSS
POSTAL CUSTOMER

ANNUAL REPORT

2019-2020

ACHIEVEMENT

ENRICHMENT

OPPORTUNITY



Columbia
PUBLIC SCHOOLS



A MESSAGE FROM THE SUPERINTENDENT



Dr. Peter Stiepleman

In Columbia Public Schools, we believe in providing all of our children with an excellent education. By preparing our children for an ever-changing, unpredictable world, we believe it will take us one step closer toward realizing our vision to be the best school district in Missouri. Never before has our world been more ever-changing or unpredictable than now. Global pandemics will have an impact on a community and its schools. In our district, we frame our vision, mission, purpose and goals around providing our students with access. This means:

- Access** to a great curriculum;
- Access** to skilled teachers; and a nurturing environment;
- Access** to technology;
- Access** to experiences beyond the core curriculum;
- Access** to interest-based activities before and after school.

We communicate the issue of access for our district with three letters. Three vowels, actually, because like vowels, these three words serve as a building block—they represent the WHY for everything we do.

AEO **ACHIEVEMENT**
ENRICHMENT
OPPORTUNITY

AEO is a belief system that is more important today than ever before. We want all of our children to be able to access an excellent education. I'm committed to that. And to accomplishing success while living our core values of trust, integrity, transparency, collaboration, empathy and grace.

We have outstanding schools, students, teachers, and staff in our school district. Our continued efforts toward excellence would not be possible without the support of our community. We continue to be grateful for what the citizens of Columbia and Boone County do to help continue to make our schools the best.

Sincerely,
Dr. Peter Stiepleman
Superintendent
Columbia Public Schools

MISSION

To provide an excellent education for all students

VISION

To be the best school district in the state

VALUES

Trust
Integrity
Collaboration
Transparency
Empathy
Grace

ABOUT THE DISTRICT

Columbia Public Schools is the fifth largest school district in Missouri. It includes 21 elementary schools, seven middle schools, four high schools and the Columbia Area Career Center, as well as an early childhood education program, with an enrollment of 19,052 students.

The school district is accredited by the Missouri Department of Elementary and Secondary Education, citing such educational advantages as:

- Comprehensive curriculum and services at all grade levels, preschool and adult
- Exceptional programs for at-risk students and students with special needs
- Extensive depth and breadth in middle school and high school course offerings
- Award-winning career education programs designed for all students
- Successful community partnerships and volunteer programs
- Significant emphasis on staff development and school improvement efforts

Columbia's students excel in the classroom and in their post-secondary education careers. Nearly 85-90 percent of Columbia students extend their education beyond high school. Seventy-eight

percent attend a college, university or post-secondary program. Student performance on the ACT and SAT exams exceed state and national averages. In 2019, 91 percent of graduates took the ACT. Additionally, of the 1,337 students taking advanced placement courses, more than 80 percent earned college credit.

Our district's teachers represent the primary reason Columbia's schools and students are so successful. More than 72 percent of teachers hold a master's degree or higher and average 12.5 years of professional experience.

The community understands the importance of maintaining a high-quality educational program. Most recently, bond issues were passed in 1994, 1996, 1998, 2000, 2002, 2004, 2007, 2010, 2012, 2014, 2016, 2018 and 2020. A tax levy increase received voter approval in 1999, 2003, 2012 and 2016.

Columbia Public Schools is also ranked as a top 10 district for exemplary and innovative use of technology by the National School Boards Association and ranked in the top 10 percent of school districts nationwide by Niche.com.

**The district's focus,
from preschool to
adult career education,
is excellence.**

BOARD OF EDUCATION

PRESIDENT

Helen Wade

VICE PRESIDENT

Susan Blackburn

MEMBERS

Chris Horn
Teresa Maledy
David Seamon
Dr. Della Streaty-Wilhoit
Blake Willoughby

ENROLLMENT, STAFF and FACULTY FACTS

41.09%

Free or Reduced-Price
Lunch

7.0%

English Language
Learners

9.8%

Special Education

19,052
STUDENTS

PK – 12

48.1%  **51.9%** 

16

students to classroom teachers

5th

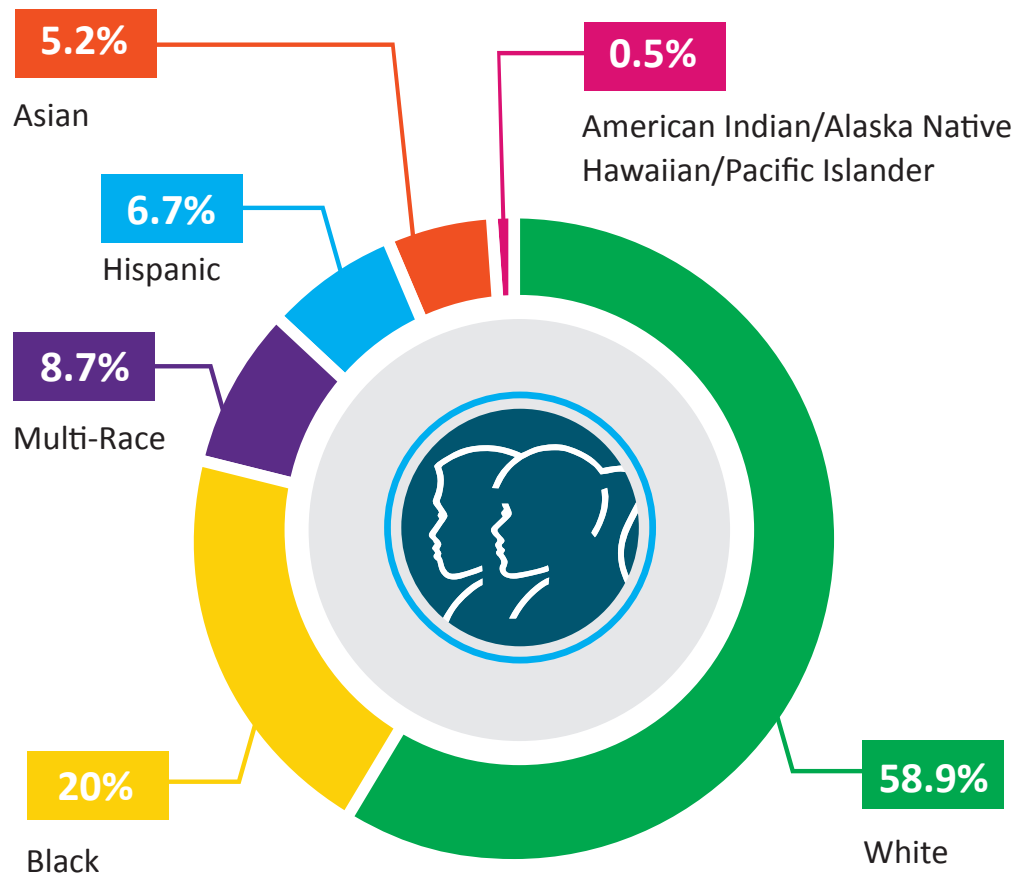
Largest
School
District
in Missouri

236

students to administrators

13:1

student to teacher ratio



42
BUILDINGS

116
(FTE)

Administration

principals
assistant principals
directors
supervisors
coordinators
central office

1,420
(FTE)

Teachers

classroom teachers
special services
instructional coaches

2,879
(TOTAL)

Employees

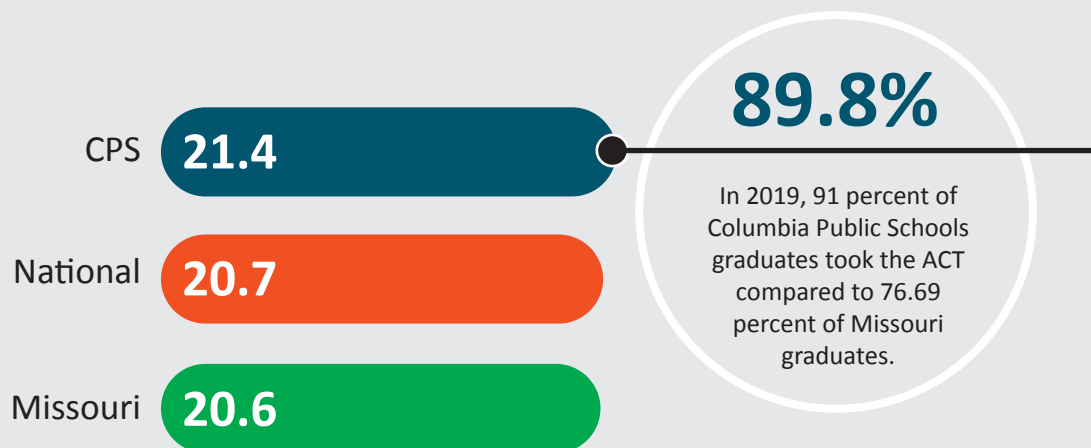
1,205
(FTE)

Student Support

secretaries
aides
food service
guidance
security
parent educators
nurses
transportation
custodians
technology
permanent subs
AVID tutors

STUDENT ACHEIVEMENT

ACT COMPOSITE SCORES



Percent of students with at least 90% attendance

Attendance Rate

82.5%

Graduation Rate

89.0%

54.4%



GRADUATE FOLLOW-UP

All students graduate collect-, career- and life-ready.
78% of the district's students attend college or a post-secondary program

AIMSWEB READING & MATH RESULTS

Percent of students scoring above the 40th percentile.

55.5%

Kindergarten Literacy

62.7%

Kindergarten Numeracy

64.9%

Reading 3rd Grade

67.9%

Math 2nd-10th grades

64.0%

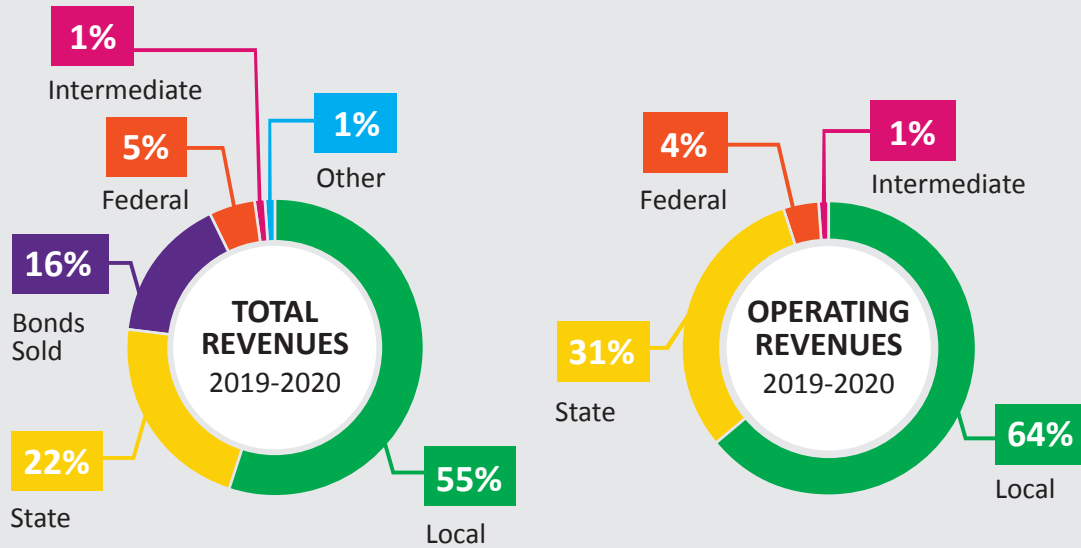
Reading 2nd-10th grades

1,903
AP EXAMS
WERE TAKEN

1,337
AP STUDENTS
ENROLLED

81.1%
EARNED A 3
OR HIGHER

FINANCES 2019 – 2020



2019-2020 Revenue Projected Actual

	TOTAL	OPERATING
Property Taxes	\$155,541,852	\$128,222,546
Sales Taxes	\$17,710,260	\$17,710,260
Foundation Formula	\$64,190,199	\$64,107,501
Other - State	\$9,560,655	\$9,033,249
Federal	\$17,869,244	\$10,563,943
Sale of Bonds	\$54,410,000	-
Other	\$19,754,877	\$6,095,916
	\$339,037,087	\$235,733,415

\$2.6187
BILLION

Final
assessed
valuation of
the district

\$11,921

Average
per pupil
expenses
2018-2019

\$12,326

Projected
per pupil
expenses
2019-2020

Adjusted TAX RATE of the District

	2019
TOTAL TAX RATE \$6.0988 per \$100 of assessed valuation	
Incidental/General	\$2.0111
Teachers	\$3.0158
Debt Service	\$0.9719
Capital Projects	\$0.10000

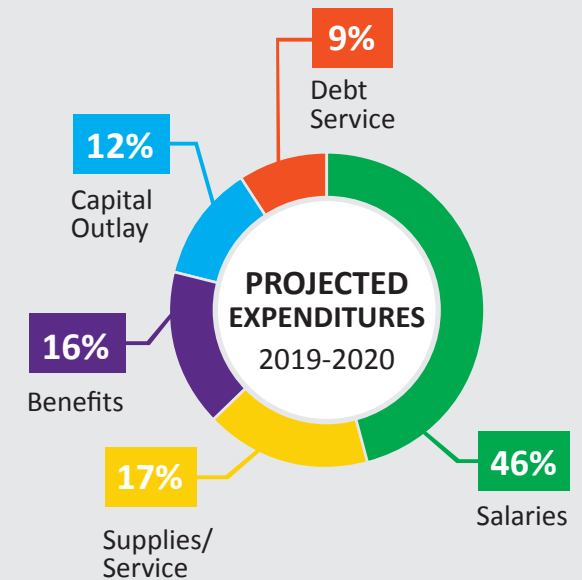
2019-2020 Expenditures by Fund Comparison

	BUDGETED	PROJECTED ACTUAL
General	\$86,958,948	\$79,166,372
Special Revenue (teachers)	\$146,756,094	\$144,570,360
Debt Service	\$24,487,338	\$26,413,868
Capital Projects	\$55,143,147	\$34,951,183
Other	\$16,637,174	\$16,348,697
	\$329,982,701	\$301,450,480

Columbia Public Schools maintains a balanced budget, guided by a long-range financial plan and planning parameters focused on Achievement, Enrichment and Opportunity.

Total expenditures by object show how CPS actually spends the dollars budgeted. Salaries and benefits account for nearly 62 percent of total expenditures and 80 percent of operating expenditures.

The increase in salaries and benefits for 2018-2019 can be attributed to improved compensation for employees and continued 100 percent fully-funded benefits for all full-time staff.



2019-2020 Expenditures by Object

	BUDGETED	PROJECTED ACTUAL
Salaries	\$142,568,171	\$137,928,750
Services/ Supplies/ Capital Outlay	\$113,719,756	\$86,917,320
Employee Benefits	\$47,675,169	\$48,012,319
Debt Service/ Lease Purchase	\$24,487,338	\$26,413,868
Other Financing Uses	\$1,532,267	\$2,178,224
	\$329,982,701	\$301,450,480

HIGHLIGHTS

DISTRICT ACHIEVEMENTS

DISTRICT RECOGNIZED FOR BUDGETING EXCELLENCE

Columbia Public Schools has been recognized by The Association of School Business Officials International with the Meritorious Budget Award for the 2019–2020 budget year. The award promotes and recognizes the best budget presentation practices in school districts. The district was also awarded the certificate of excellence in financial reporting for its Comprehensive Annual Financial Report (CAFR).



NATIONALLY RECOGNIZED TEACHERS

Oakland Middle School Teacher **Melissa Fike** was honored with the Milken Educator Award for her exceptional teaching. **Alex Soper**, Hickman High School physics teacher, received the Physics Teacher Education Coalition Teacher of the Year Award. CPS has **11 educators** who hold national board certification.

NATIONAL RECOGNITION FOR EQUITY AND INCLUSION WORK

In 2019, Columbia Public Schools was awarded the Magna Award for Equity Programs for its work with the Boone County Schools Mental Health Coalition. The district earned first place recognition among medium-sized school districts from across the country. The Magna Awards, sponsored by the National School Boards Association and the American School Board Journal, recognizes school districts for their efforts to remove barriers to achievement for vulnerable or underserved children based on race, ethnicity, gender, special needs, geography or socioeconomic status.

ATHLETICS & ACTIVITIES ACHIEVEMENTS



Rock Bridge High School Girls' Basketball Team went to its first Final Four appearance since 2017. *Team members:* **Kate Linnemeyer, Kyras Brodie, Averi Kroenke, Mary Primus, Sanaa' St Andre, Caitlin Hayes, Eryn Puett, Samantha Mackley**
Manager: **Megan Henry**

Rock Bridge High School Girls' Swimming 400 Freestyle Relay Team won the MSHSAA Class 2 Swimming State Championship. *Team members:* **Elise Henderson, Olivia Henderson, Ansley Barnes and Mara Manion**

A.J. Huskey (Battle High School) won the MSHSAA Class 1 Individual 100-Yard Fly Swimming State Championship.

Oakley Lorson (Rock Bridge High School) won the MSHSAA Class 2 Individual 200 Freestyle Swimming State Championship.

Carolyn Ford (Rock Bridge High School) won the MSHSAA Class 4 Individual Cross Country State Championship.

Seven CPS students were selected for the inaugural Missouri All-State Children's Choir. Students are: **Carmen Atkins, Mihir Bhalla, Zane Bragg, Parker Horvath, Natalie Huggler, Calla Shade and Keegan Shaw.**

ACADEMIC ACHIEVEMENTS

CAREER AND TECHNICAL EDUCATION CHAMPIONS

FFA Missouri Veterinary Science Career Development Event: **Mattie DaHaven** (Hickman High School) won firstplace and **Gentry Duncan** (Rock Bridge High School) won second place. They are joined by fellow team members **Emily Zimmerschied** (Columbia Area Career Center) who placed in fifth, and **Kaya MacLeod** (Rock Bridge High School) who placed in twelfth.



NATIONAL MERIT FINALISTS

Jacob Galen Coberly, Rock Bridge High School
Caleb Foster, Battle High School
Mary K. Grossmann, Rock Bridge High School
Crystal H. Odor, Rock Bridge High School
Fletcher S. Orr, Hickman High School
Inessa E. Verbitsky, Rock Bridge High School

6
National
Merit
Finalists

DECA State
Competition
72 students
qualified

Outstanding
Delegate Award
Model United Nations
Amira McKee
Rock Bridge High
School

2020 VALEDICTORIANS

ROCK BRIDGE HIGH SCHOOL

Olivia Anderson
Ansley Barnes
Kate Bushnell
Will Cover
Grace Dyer
James Glaser
Chengrui Hou
Benjamin Kimchi
Will Linder
Audrey Mueller
Greta Scheidt
Bailey Stover
Marin Tucker
Toan Vu



BATTLE HIGH SCHOOL

Maelyn Andreasen
Aya Bellaoui
Daniela Calle
Yin-Tzu Chen
Nevin Dubinski
Ty Leroux
Madeline Schrader
Nicholas Sheaffer

HICKMAN HIGH SCHOOL

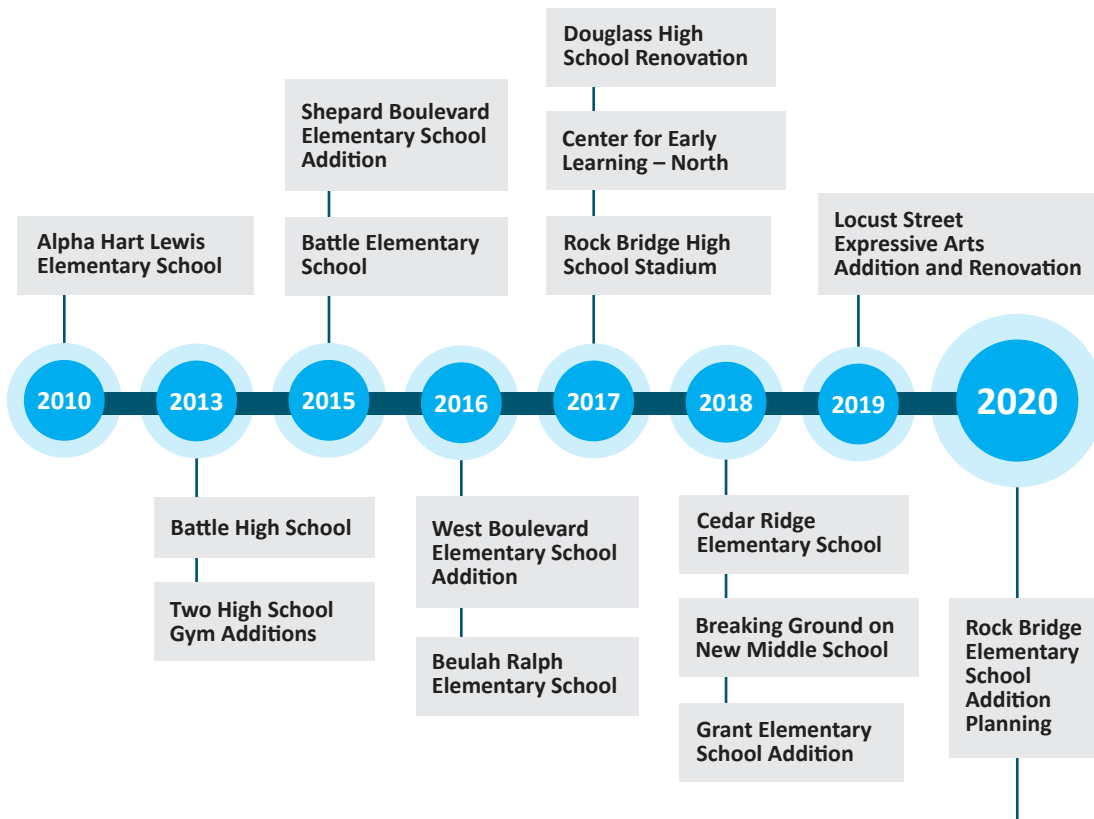
Sierra Calfee
Naomi Garson
Hannah Larson
Kristina Sidorova
Grace Spell
Isabel Trindade



BOND PROJECTS THROUGH THE YEARS

GROWTH

In a growing community like Columbia, it's imperative to have public support to fund projects and improvements. Columbians consistently rise to the challenge, voting for bonds and levy increases so our children can have the best educational experiences possible. From the gradual elimination of trailers to the construction of new schools, Columbia Public Schools is committed to having high-quality facilities and learning environments.



John Warner Middle School Opens



DISTRICT STATS & FACTS

SCHOOL IMPROVEMENTS

- Middle school athletic equity improvements at Oakland, Smithton and Gentry
- Locust Street Elementary School addition/renovation
- Oakland Middle School renovations
- Midway Heights School remodel
- Safety and security improvements across the district



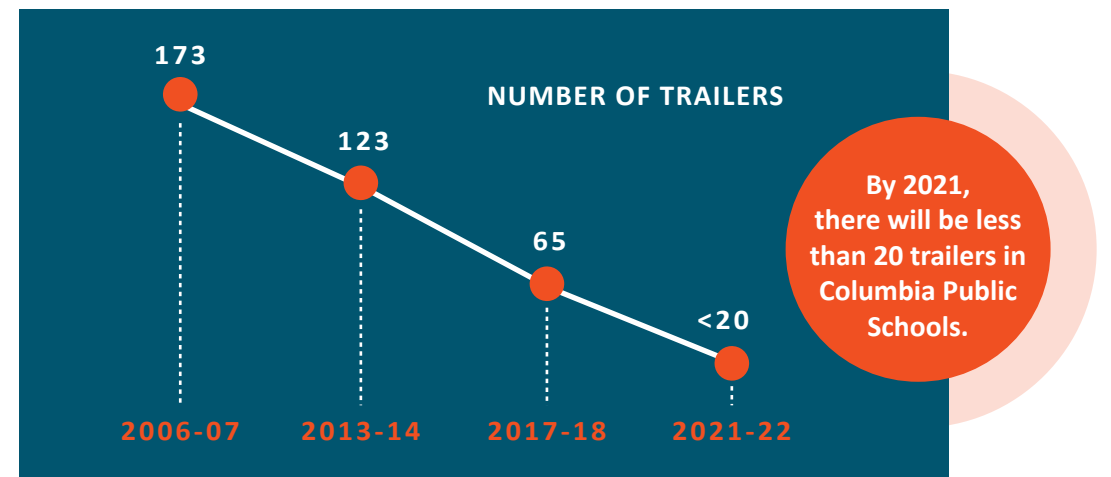
3,540,702
SQUARE FEET
OF BUILDING
SPACE



2,119,241 square feet of roofs



799 acres maintained



SCHOOL DIRECTORY



Alpha Hart Lewis
Elementary School
5801 Arbor Pointe Pkwy.
Columbia, MO 65202
573-214-3200
cpsk12.org/ahl



Fairview
Elementary School
909 Fairview Rd.
Columbia, MO 65203
573-214-3590
cpsk12.org/fve



Paxton Keeley
Elementary School
201 Park DeVille Dr.
Columbia, MO 65201
573-214-3570
cpsk12.org/kee



Gentry
Middle School
4200 Bethel St.
Columbia, MO 65203
573-214-3240
cpsk12.org/gms



Battle
High School
7575 E. St. Charles Rd.
Columbia, MO 65202
573-214-3300
cpsk12.org/bhs



The Early Childhood
Discovery Center
901 Rain Forest Pkwy.
Columbia, MO 65202
573-214-3430
cpsk12.org



Benton STEM
Elementary School
1410 Hinkson Ave.
Columbia, MO 65201
573-214-3610
cpsk12.org/bee



Grant
Elementary School
10 E. Broadway
Columbia, MO 65203
573-214-3520
cpsk12.org/gre



Ridgeway
Elementary School
107 E. Sexton Rd.
Columbia, MO 65203
573-214-3550
cpsk12.org/rwe



Jefferson
Middle School
713 Rogers St.
Columbia, MO 65201
573-214-3210
cpsk12.org/jms



Douglass
High School
301 N. Providence Rd.
Columbia, MO 65203
573-214-3680
cpsk12.org/dhs



Park Avenue
Headstart Preschool
403 Park Ave.
Columbia, MO 65201
573-449-1575



Beulah Ralph
Elementary School
5801 S. Highway KK
Columbia, MO 65203
573-214-3840
cpsk12.org/beu



Locust Street Expressive
Arts Elementary School
1208 Locust St.
Columbia, MO 65201
573-214-3530
cpsk12.org/lse



Rock Bridge
Elementary School
5151 S. Highway 163
Columbia, MO 65203
573-214-3290
cpsk12.org/rbe



John Warner
Middle School
5550 Sinclair Rd.
Columbia, MO 65203
573-214-3890
cpsk12.org/jwms



Hickman
High School
1104 N. Providence Rd.
Columbia, MO 65203
573-214-3000
cpsk12.org/hhs



A.C.E. (Alternative
Continuing Education)
1200 N. 7th St.
Columbia, MO 65201
573-825-7769



Blue Ridge
Elementary School
3700 Woodland Dr.
Columbia, MO 65202
573-214-3580
cpsk12.org/bre



Midway Heights
Elementary School
8130 W. Highway 40
Columbia, MO 65202
573-214-3540
cpsk12.org/mwe



Russell Boulevard
Elementary School
1800 W. Rollins Rd.
Columbia, MO 65203
573-214-3650
cpsk12.org/rue



Lange
Middle School
2201 Smiley Ln.
Columbia, MO 65202
573-214-3250
cpsk12.org/lms



Rock Bridge
High School
4303 S. Providence Rd.
Columbia, MO 65203
573-214-3100
cpsk12.org/rbhs



Roseta Avenue
Learning Center
1100 Roseta Ave.
Columbia, MO 65201
573-214-3510



Cedar Ridge
Elementary School
2345 Howell Mountain Dr.
Columbia, MO 65201
573-214-3880
cpsk12.org/cre



Mill Creek
Elementary School
2200 W. Nifong Blvd.
Columbia, MO 65203
573-214-3280
cpsk12.org/mce



Shepard Boulevard
Elementary School
2616 Shepard Blvd.
Columbia, MO 65201
573-214-3660
cpsk12.org/she



Oakland
Middle School
3405 Oakland Pl.
Columbia, MO 65202
573-214-3220
cpsk12.org/oms



Center for
Gifted Education
1010 Rangeline St.
Columbia, MO 65201
573-214-3750
cpsk12.org/eee



Center of Responsive
Education (CORE)
4600 Bethel St.
Columbia, MO 65203
573-214-3740
cpsk12.org/core



Derby Ridge
Elementary School
4400 Derby Ridge Dr.
Columbia, MO 65202
573-214-3270
cpsk12.org/dre



New Haven
Elementary School
3301 New Haven Rd.
Columbia, MO 65201
573-214-3640
cpsk12.org/nhe



Two Mile Prairie
Elementary School
5450 N. Route Z
Columbia, MO 65202
573-214-3560
cpsk12.org/tmp



Smithton
Middle School
3600 W. Worley St.
Columbia, MO 65203
573-214-3260
cpsk12.org/sms



Columbia Area
Career Center
4203 S. Providence Rd.
Columbia, MO 65203
573-214-3800
career-center.org



Eliot Battle
Elementary School
2600 Battle Ave.
Columbia, MO 65202
573-214-3790
cpsk12.org/bes



Parkade
Elementary School
111 Parkade Blvd.
Columbia, MO 65202
573-214-3630
cpsk12.org/pke



West Boulevard
Elementary School
319 West Boulevard N.
Columbia, MO 65203
573-214-3670
cpsk12.org/wbe



West
Middle School
401 Clinkscales Rd.
Columbia, MO 65203
573-214-3230
cpsk12.org/wms



Center for Early
Learning - North
2191 Smiley Ln.
Columbia, MO 65202
573-214-3950
cpsk12.org