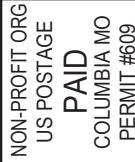


ANNUAL REPORT is published by the Columbia Public School District as a public service to the parents of school-age children and district residents. The Columbia Public School District does not discriminate on the basis of race, color, religion, gender, gender identity, gender expression, sex, sexual orientation, national origin, ancestry, disability, age, or use of leave protected by the Family and Medical Leave Act, in its programs, activities, or with regard to employment. The Columbia Board of Education is an equal opportunity employer. Inquiries regarding Columbia Public Schools' compliance with IDEA and Section 504 regulations should contact Special Services at 1818 W. Worley Street, Columbia, MO 65203.

Aslin Administration Building
1818 W. Worley Street
Columbia, MO 65203



**ECRWSS
POSTAL CUSTOMER**

ANNUAL REPORT 2020-2021



Columbia
PUBLIC SCHOOLS

A MESSAGE FROM THE SUPERINTENDENT



Dr. Brian Yearwood

In Columbia Public Schools, we believe in prioritizing scholars and supporting their learning and success.

As we continue to build on the current progress of Columbia Public Schools our focus is on:

Scholars First

We will continue the academic growth and enrichment opportunities for all scholars.

Continue Strong Relationships

We will strengthen relationships with families, scholars and our community to work together as a team to maintain excellence.

Recognize our Differences

We will maintain high expectations and modify our approaches to meet the needs of individual learners to help them excel.

We must focus on understanding how our scholars learn while continuing to provide high quality educational opportunities.

CPS is made up of exceptional schools, scholars, teachers and staff. Our continued work toward excellence is possible because of the support of our community and its investment in our schools.

Sincerely,

Dr. Brian Yearwood

Superintendent

Columbia Public Schools

“ We are very pleased to be moving forward with Dr. Yearwood. He comes to us with extensive experience in education and has experience in many areas our district has been focusing on, including literacy and college and career readiness. We are excited about his energy and optimism and believe he will give CPS 110%. ”

Board of Education President
Helen Wade

ABOUT THE DISTRICT

Columbia Public Schools is the fifth largest school district in Missouri. It includes 21 elementary schools, seven middle schools, four high schools and the Columbia Area Career Center, as well as an early childhood education program. Total enrollment is 18,213 students.

The school district is accredited by the Missouri Department of Elementary and Secondary Education, citing such educational advantages as:

Comprehensive curriculum and services at all grade levels, preschool and adult

Exceptional programs for at-risk students and students with special needs

Extensive depth and breadth in middle school and high school course offerings

Award-winning career education programs designed for all students

Successful community partnerships and volunteer programs

Significant emphasis on staff development and school improvement efforts

Columbia's students excel in the classroom and in their post-secondary education careers. Approximately 85-90 percent of Columbia students extend their education beyond high school, with 69.1 percent attending a college, university or post-secondary program.

Student performance on the ACT and SAT exams exceed state and national averages. In 2020, 89.1 percent of graduates took the ACT. Additionally, of the 1,483 students taking advanced placement courses in 2020, nearly 70 percent earned college credit.

Our district's teachers represent the primary reason Columbia's schools and students are so successful. More than 72 percent of teachers hold a master's degree or higher and average 12.5 years of professional experience.

The community understands the importance of maintaining a high-quality educational program. Most recently, bond issues were passed in 1994, 1996, 1998, 2000, 2002, 2004, 2007, 2010, 2012, 2014, 2016, 2018 and 2020. A tax levy increase received voter approval in 1999, 2003, 2012 and 2016.

Columbia Public Schools is also ranked as a top 10 district for exemplary and innovative use of technology by the National School Boards Association and ranked in the top 10 percent of school districts nationwide by Niche.com.

**The district's focus,
from preschool to
adult career education,
is excellence.**

BOARD OF EDUCATION

PRESIDENT

Helen Wade

VICE PRESIDENT

Dr. Della Streaty-Wilhoit

MEMBERS

Chris Horn

Katherine Sasser

David Seamon

Jeanne Snodgrass

Blake Willoughby

ENROLLMENT, STAFF and FACULTY FACTS

47.2%

Free or Reduced-Price
Lunch

6.65%

English Language
Learners

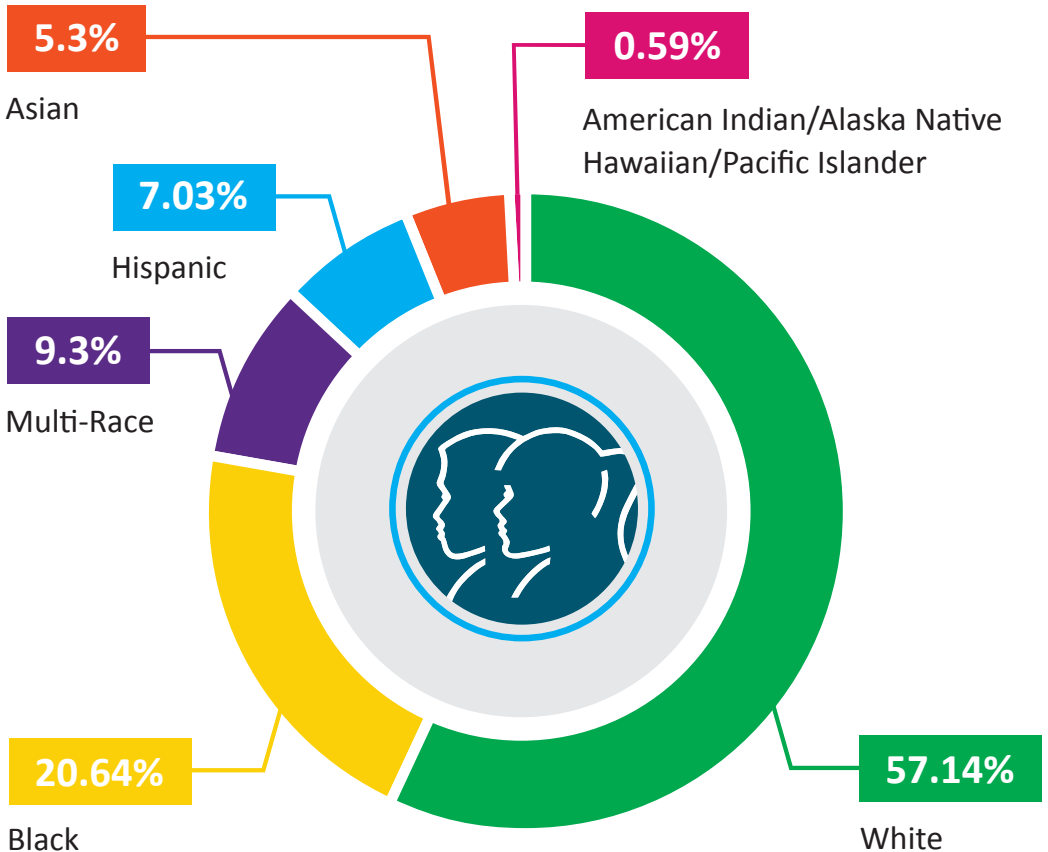
11.04%

Special Education

18,213
STUDENTS

PK – 12

48.5%  **51.5%** 



17

students to classroom teachers

226

students to administrators

5th

Largest
School
District
in Missouri

13:1

student to teacher ratio



42
BUILDINGS

119
(FTE)

Administration

principals
assistant principals
directors
supervisors
coordinators
central office

1,453
(FTE)

Teachers

classroom teachers
special services
instructional coaches

2,896
(TOTAL)

Employees

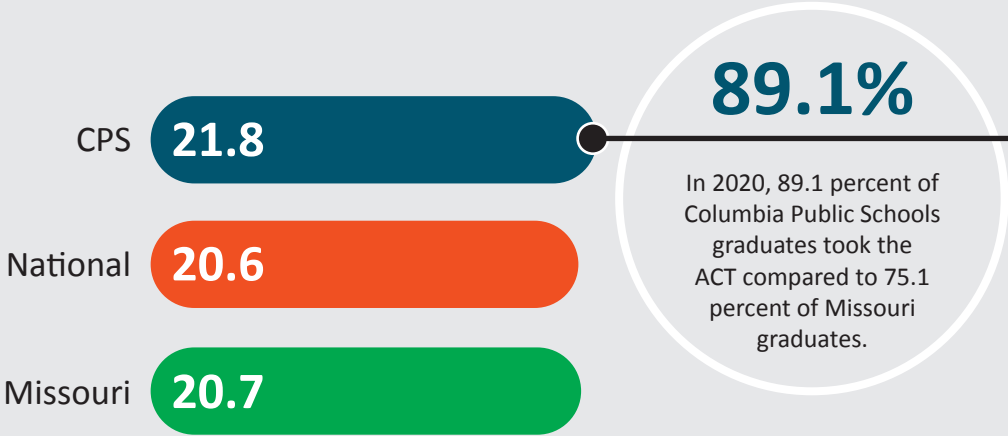
1,195
(FTE)

Student Support

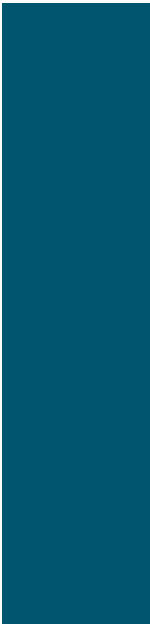
secretaries
aides
food service
guidance
security
parent educators
nurses
transportation
custodians
technology
permanent subs
AVID tutors

STUDENT ACHIEVEMENT

ACT COMPOSITE SCORES FOR 2020



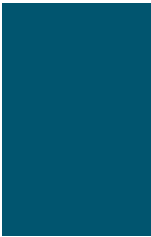
48.9%



2020 GRADUATE FOLLOW-UP

All students graduate college-, career- and life-ready.
69.1% of the district's students attend college or a post-secondary program

18.2%



16.7%



1.5%



2.0%



12.7%



4-Year College

2-Year College

Employed

Military

Post-Secondary Training Program

Other

Percent of students with at least
90% attendance in 2020

Attendance Rate

82.4%

Graduation Rate

90.8%

COLUMBIA PUBLIC SCHOOLS
EARLY COLLEGE PROGRAM STATISTICS

Students earn 10-12 college hours per semester while concurrently satisfying high school graduation requirements.

51

Students made
the fall MACC
President's List
GPA of 4.0

25

Students made
the fall MACC
Dean's List
GPA of 3.5 to 3.99

47%

Students
compete in a
MSHSAA
activity

155

Students
started
fall semester
2020-2021

143

Students
started
spring semester
2020-2021

1,963

AP EXAMS
WERE TAKEN
2020

1,483

AP STUDENTS
ENROLLED

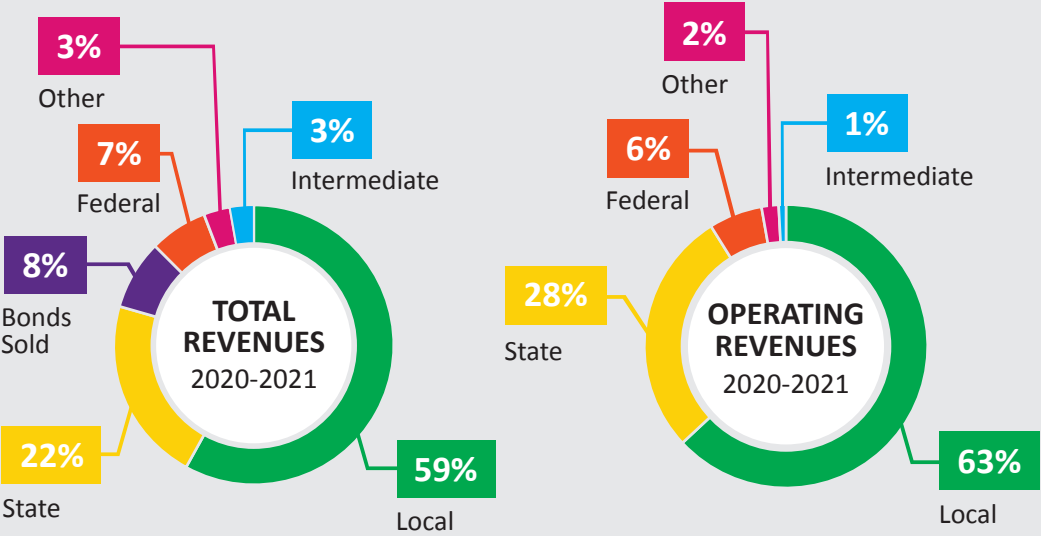
69.6%

EARNED A 3
OR HIGHER

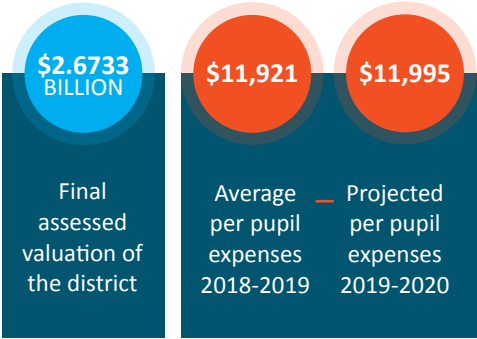
1,878

EARLY COLLEGE
CREDITS
EARNED

FINANCES 2020 – 2021



2020-2021 Revenue Projected Actual	TOTAL	OPERATING
Property Taxes	\$158,825,244	\$130,790,012
Sales Taxes	\$18,969,675	\$18,969,675
Foundation Formula	\$60,722,460	\$60,639,762
Other - State	\$11,179,563	\$8,949,580
Federal	\$21,449,171	\$15,948,067
Sale of Bonds	\$24,620,000	-
Other	\$23,844,202	\$11,898,841
	\$319,610,315	\$247,195,937



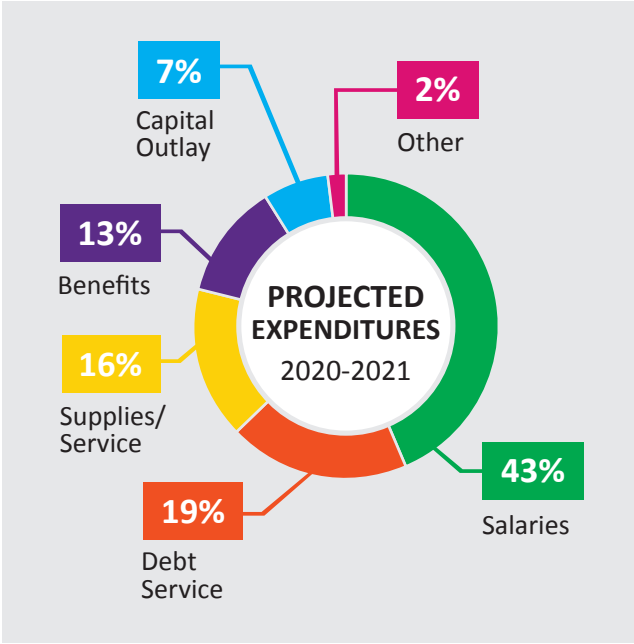
Adjusted TAX RATE of the District		2020
TOTAL TAX RATE \$6.0984 per \$100 of assessed valuation	Incidental/General	\$2.0107
	Teachers	\$3.0158
	Debt Service	\$0.9719
	Capital Projects	\$0.10000

2020-2021 Expenditures by Fund Comparision	BUDGETED	PROJECTED ACTUAL
General	\$106,328,408	\$93,003,754
Special Revenue (teachers)	\$156,023,901	\$151,937,144
Debt Service	\$60,782,493	\$66,140,295
Capital Projects	\$51,197,157	\$23,323,515
Other	\$17,648,572	\$12,979,614
	\$391,980,530	\$347,384,322

Columbia Public Schools maintains a balanced budget, guided by a long-range financial plan and planning parameters focused on Achievement, Enrichment and Opportunity.

Total expenditures by object show how CPS actually spends the dollars budgeted. Salaries and benefits account for nearly 62 percent of total expenditures and 80 percent of operating expenditures.

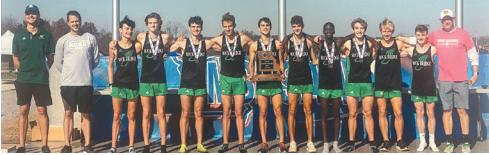
The school district continues 100% fully-funded benefits for all full-time staff.



2020-2021 Expenditures by Object	BUDGETED	PROJECTED ACTUAL
Salaries	\$151,266,904	\$148,296,725
Services/ Supplies/ Capital Outlay	\$115,591,747	\$77,536,632
Employee Benefits	\$49,817,334	\$45,988,326
Debt Service/ Lease Purchase	\$60,782,492	\$66,140,295
Other Financing Uses	\$14,522,053	\$9,422,344
	\$391,980,530	\$347,384,322

HIGHLIGHTS

ATHLETICS & ACTIVITIES ACHIEVEMENTS



ROCK BRIDGE HIGH SCHOOL

Girls' Softball

MSHSAA Class 5 State Champions

Boys' Cross Country

MSHSAA Class 5 State Champions

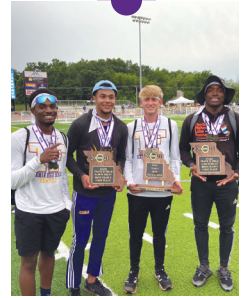
Boys' Track & Field

MSHSAA Class 5 State Champions



DOUGLASS HIGH SCHOOL

Brady Whelihan finished 10th in the shot put at the MSHSAA Class 1 State Championship, becoming the first track and field athlete in Douglass High School history to capture a district and sectional championship and compete at state.

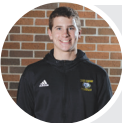


HICKMAN HIGH SCHOOL

Adam Trachsel, Devin Turner, Deontral Weston & Edward Nelson Jr. MSHSAA Class 5-4x100m Relay Track & Field State Champions



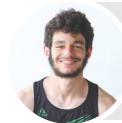
Matthew Hauser (Rock Bridge High School) – MSHSAA Class 5 Individual Cross Country State Champion



Carter McCallister (Rock Bridge High School) – MSHSAA Class 4-126 pound weight class Wrestling State Champion



Chris Giles (Rock Bridge High School) – MSHSAA Class 5-400m Dash Track & Field State Champion



Casey Hood (Rock Bridge High School) – MSHSAA Class 5-200m Dash Track & Field State Champion

ACADEMIC ACHIEVEMENTS

HICKMAN HIGH SCHOOL SENIOR NAMED PRESIDENTIAL SCHOLAR

Hickman High School senior Justin Eddy has been named a Presidential Scholar in Career and Technical Education. Secretary of Education Dr. Miguel Cardona announced the 57th class of U.S. Presidential Scholars on May 13, recognizing 161 high school seniors nationwide for their accomplishments in academics, the arts and career and technical education fields.



ACADEMIC ACHIEVEMENTS

PURDUE STAMPS SCHOLARS

Giovanna Durante of Rock Bridge High School was named one of the incoming Stamps Scholars at Purdue University, where she will also be a member of the Honors College. Purdue Stamps Scholars demonstrate academic merit, strong leadership potential and exceptional character.

SCHOLARSHIP & SCHOLAR RECIPIENT

Amaya Daniels, CPS AVID Scholar and MAC Scholar of Battle High School, was awarded a QuestBridge Scholarship which provides students who have excelled academically with a full four-year scholarship, worth over \$200,000. Amaya matched with Washington University in St. Louis. Amaya has also been named a Horatio Alger Scholar and was one of 106 chosen from 300,000 applications. The \$25,000 scholarship is given to students who have demonstrated academic achievement or leadership potential, determination, integrity and perseverance in overcoming adversity, and who have critical financial need.



Perfect
ACT
Scores

**MURIEL BATTLE
HIGH SCHOOL**
Jasper Holland

**ROCK BRIDGE
HIGH SCHOOL**
Kyle Chen
Bethany Eppinger
Emma Howell
Brandon Kim
Jarett Ren
Kellen Sapp
Macie Sexton
Elizabeth Sherwin
William VanDyke

2021 VALEDICTORIANS



HICKMAN HIGH SCHOOL

- Ethan Jones
- Benjamin Edidin
- Adin Aberbach
- Alice Tang
- Elizabeth Henderson
- Samantha Woodard



ROCK BRIDGE HIGH SCHOOL

- | | | |
|------------------|-----------------|----------------|
| Vignesh Kumar | Garrett Roach | Ella Maddox |
| Hyunjae Hahm | Phillip Lei | Claire Swindle |
| Abigail Frerking | Jarrett Ren | Ava Roderick |
| Shruti Gautam | Arren Mallott | Abigail Wankum |
| Giovanna Durante | Addison Lockett | |



BATTLE HIGH SCHOOL
Mackenzie Harrington
Valedictorian

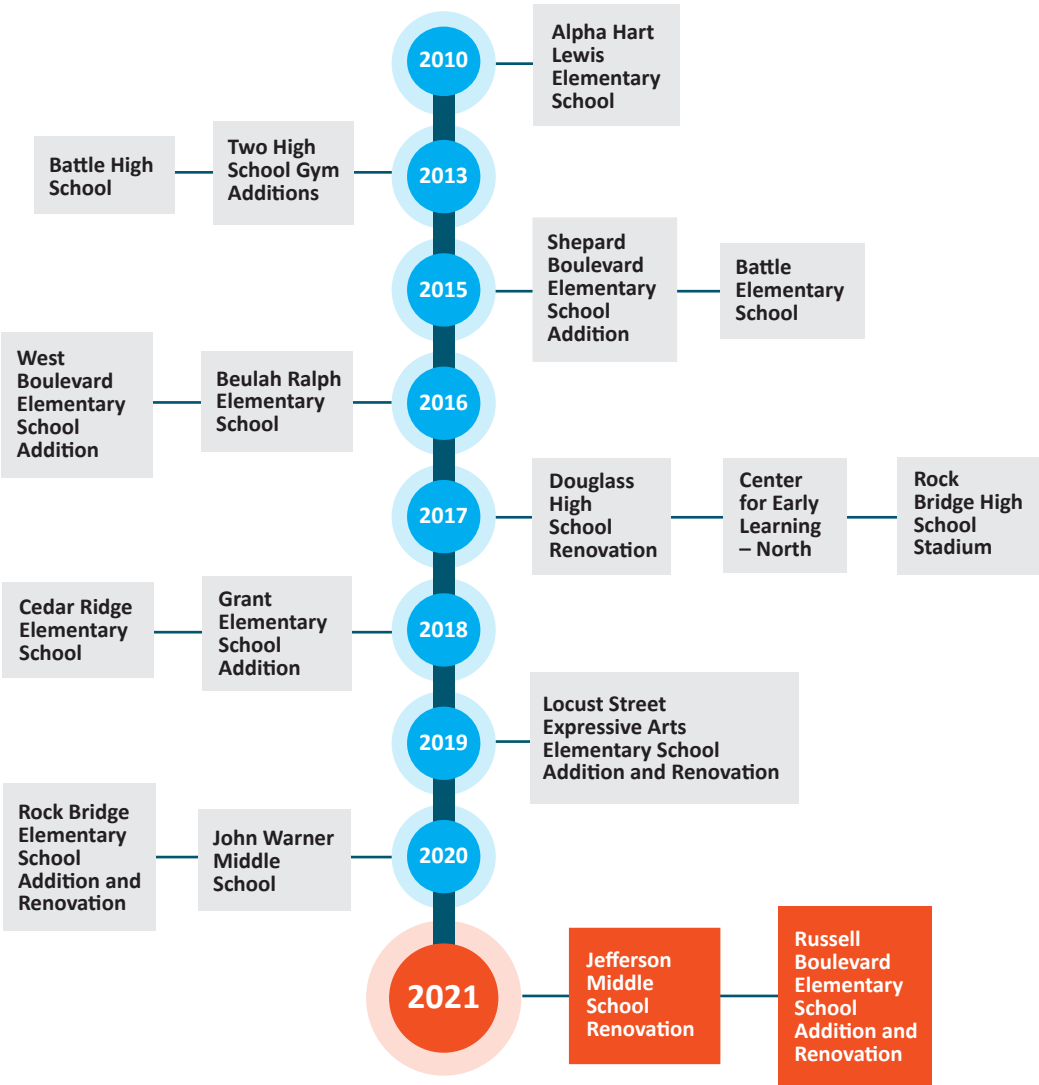


BATTLE HIGH SCHOOL
Addison Gish
Salutatorian

BOND PROJECTS THROUGH THE YEARS

GROWTH

In a growing community like Columbia, it's imperative to have public support to fund projects and improvements. Columbians consistently rise to the challenge, voting for bonds and levy increases so our children can have the best educational experiences possible. From the gradual elimination of trailers to the construction of new schools, Columbia Public Schools is committed to having high-quality facilities and learning environments.



DISTRICT STATS & FACTS

SCHOOL IMPROVEMENTS

- Renovations and additions completed at Locust Street Expressive Arts Elementary School
- Renovations completed to the restrooms and athletic field at Gentry Middle School
- New synthetic turf baseball fields added at Battle and Rock Bridge high schools
- Athletic field improvements made at Smithton and Oakland middle schools
- New softball fields and a practice field added at Hickman High School
- Front entrance updated at Fairview Elementary School
- Concrete sidewalk replaced at Smithton Middle School
- John Warner Middle School construction completed




799 acres maintained

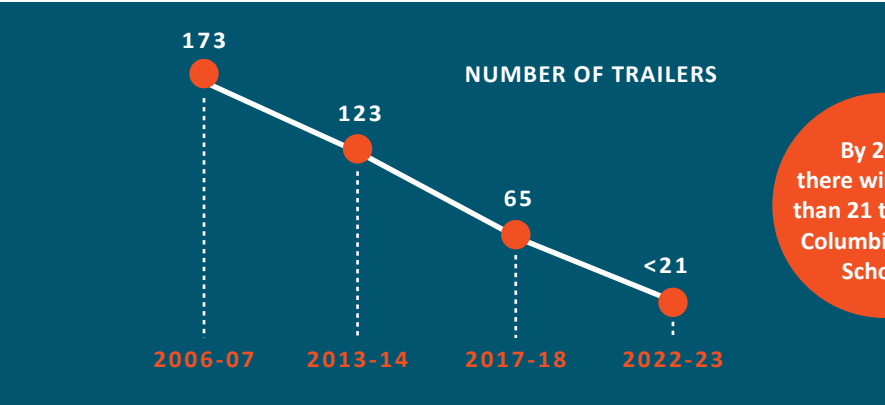


2,386,763 square feet of roofs





3,566,743
SQUARE FEET
OF BUILDING
SPACE



By 2022, there will be less than 21 trailers in Columbia Public Schools.

SCHOOL DIRECTORY



Alpha Hart Lewis
Elementary School
5801 Arbor Pointe Pkwy.
Columbia, MO 65202
573-214-3200
cpsk12.org/ahl



Fairview
Elementary School
909 Fairview Rd.
Columbia, MO 65203
573-214-3590
cpsk12.org/fve



Paxton Keeley
Elementary School
201 Park DeVille Dr.
Columbia, MO 65201
573-214-3570
Cpsk12.org/kee



Benton STEM
Elementary School
1410 Hinkson Ave.
Columbia, MO 65201
573-214-3610
cpsk12.org/bee



Grant
Elementary School
10 E. Broadway
Columbia, MO 65203
573-214-3520
cpsk12.org/gre



Ridgeway
Elementary School
107 E. Sexton Rd.
Columbia, MO 65203
573-214-3550
cpsk12.org/rwe



Beulah Ralph
Elementary School
5801 S. Highway KK
Columbia, MO 65203
573-214-3840
cpsk12.org/beu



Locust Street Expressive
Arts Elementary School
1208 Locust St.
Columbia, MO 65201
573-214-3530
cpsk12.org/lse



Rock Bridge
Elementary School
5151 S. Highway 163
Columbia, MO 65203
573-214-3290
cpsk12.org/rbe



Blue Ridge
Elementary School
3700 Woodland Dr.
Columbia, MO 65202
573-214-3580
cpsk12.org/bre



Midway Heights
Elementary School
8130 W. Highway 40
Columbia, MO 65202
573-214-3540
cpsk12.org/mwe



Russell Boulevard
Elementary School
1800 W. Rollins Rd.
Columbia, MO 65203
573-214-3650
cpsk12.org/rue



Cedar Ridge
Elementary School
2345 Howell Mountain Dr.
Columbia, MO 65201
573-214-3880
cpsk12.org/cre



Mill Creek
Elementary School
2200 W. Nifong Blvd.
Columbia, MO 65203
573-214-3280
cpsk12.org/mce



Shepard Boulevard
Elementary School
2616 Shepard Blvd.
Columbia, MO 65201
573-214-3660
cpsk12.org/she



Derby Ridge
Elementary School
4400 Derby Ridge Dr.
Columbia, MO 65202
573-214-3270
cpsk12.org/dre



New Haven
Elementary School
3301 New Haven Rd.
Columbia, MO 65201
573-214-3640
cpsk12.org/nhe



Two Mile Prairie
Elementary School
5450 N. Route Z
Columbia, MO 65202
573-214-3560
cpsk12.org/tmp



Eliot Battle
Elementary School
2600 Battle Ave.
Columbia, MO 65202
573-214-3790
cpsk12.org/bes



Parkade
Elementary School
111 Parkade Blvd.
Columbia, MO 65202
573-214-3630
cpsk12.org/pke



West Boulevard
Elementary School
319 West Boulevard N.
Columbia, MO 65203
573-214-3670
cpsk12.org/wbe



Gentry
Middle School
4200 Bethel St.
Columbia, MO 65203
573-214-3240
cpsk12.org/gms



Battle
High School
7575 E. St. Charles Rd.
Columbia, MO 65202
573-214-3300
cpsk12.org/bhs



Park Avenue
Headstart Preschool
403 Park Ave.
Columbia, MO 65201
573-449-1575



Jefferson
Middle School
713 Rogers St.
Columbia, MO 65201
573-214-3210
cpsk12.org/jms



Douglass
High School
301 N. Providence Rd.
Columbia, MO 65203
573-214-3680
cpsk12.org/dhs



A.C.E. (Alternative
Continuing Education)
1200 N. 7th St.
Columbia, MO 65201
573-825-7769



John Warner
Middle School
5550 Sinclair Rd.
Columbia, MO 65203
573-214-3890
cpsk12.org/jwms



Hickman
High School
1104 N. Providence Rd.
Columbia, MO 65203
573-214-3000
cpsk12.org/hhs



Roseta Avenue
Learning Center
1100 Roseta Ave.
Columbia, MO 65201
573-214-3510



Lange
Middle School
2201 Smiley Ln.
Columbia, MO 65202
573-214-3250
cpsk12.org/lms



Rock Bridge
High School
4303 S. Providence Rd.
Columbia, MO 65203
573-214-3100
cpsk12.org/rbhs



Center for
Gifted Education
1010 Rangeline St.
Columbia, MO 65201
573-214-3750
cpsk12.org/eee



Oakland
Middle School
3405 Oakland Pl.
Columbia, MO 65202
573-214-3220
cpsk12.org/oms



Columbia Area
Career Center
4203 S. Providence Rd.
Columbia, MO 65203
573-214-3800
career-center.org



Center of Responsive
Education (CORE)
4600 Bethel St.
Columbia, MO 65203
573-214-3740
cpsk12.org/core



Smithton
Middle School
3600 W. Worley St.
Columbia, MO 65203
573-214-3260
cpsk12.org/sms



Center for Early
Learning - North
2191 Smiley Ln.
Columbia, MO 65202
573-214-3950
cpsk12.org



West
Middle School
401 Clinkscapes Rd.
Columbia, MO 65203
573-214-3230
cpsk12.org/wms



The Early Childhood
Discovery Center
901 Rain Forest Pkwy.
Columbia, MO 65202
573-214-3430
cpsk12.org