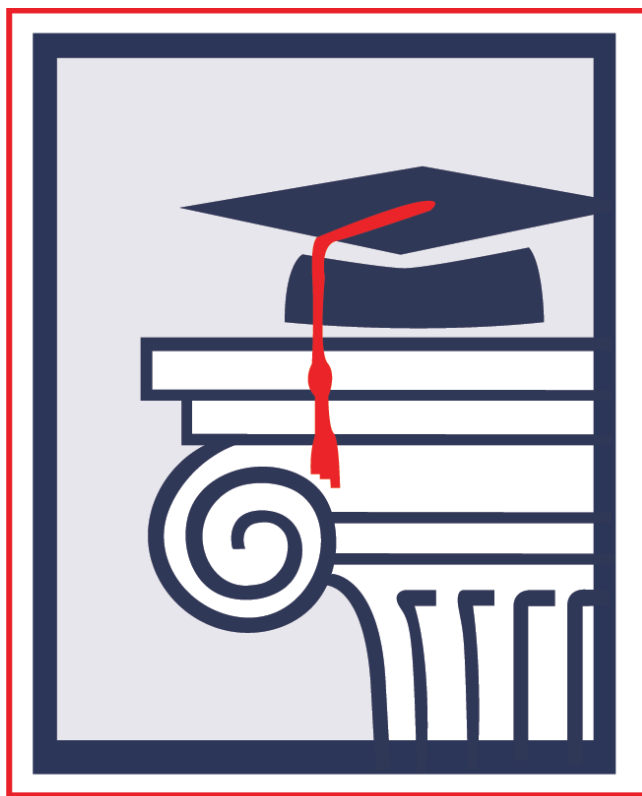


ANNUAL REPORT

2016-2017



**MONTGOMERY
C O U N T Y
E D U C A T I O N A L
S E R V I C E
C E N T E R**

TABLE OF CONTENTS

Philosophy.....	4
Mission Statement.....	4
Superintendent's Message	4
Board Members	5
Area Elected Officials	6
Montgomery County Schools.....	6-7
Financial Information	8
Office of Human Resources.....	9
Office of Administration and Operations.....	10
Department of Instructional Services.....	11-15
Office of Student Programs.....	16
MCESC Special Education Services.....	17-20
Miami Valley Regional Center	21
Diagnostic and Related Special Education Services.....	22
Occupational & Physical Therapy (OT/PT)	23
Autism Coaching Team (ACT)	24
Region 10 State Support Team	25
MCESC Technology Department	26
MCESC Web Site Directory	26

MCESC Philosophy:

The Montgomery County Educational Service Center believes that all students should be given educational experiences that maximize their potential in meeting the challenges of a constantly changing world. We believe that the ultimate goal of education should be to engage students in the problems of a subject matter, in the processes of thinking, and in connecting learning with real life and work. As students develop greater competence and confidence, they must assume responsibility for their own educational processes. Finally, to realize success in the communication age, all students must interact with technology to enhance their acquisition of knowledge and problem-solving skills.

We believe it is our mutual responsibility to provide visionary leadership and quality services that promote effective learning communities.

MCESC Mission Statement:

*The Montgomery County Educational Service
Center provides effective leadership and quality
services to educators, students, local boards, and
the community.*

The Montgomery County Educational Service Center supports a system for strong, collaborative linkages of the major stakeholders: districts, educational providers, students, parents, and the public at large. Through these combined efforts, the Center works actively to support the schools' continuous improvement processes by offering a broad range of quality services and programs. These services and programs focus on challenging and meaningful curriculum for all students, professional development, personnel and business management, student intervention, and active communication.

These cooperative efforts are designed to strengthen the capacity of the districts to achieve quality and cost-effective programs.

Superintendent's Message:



How do you evaluate the effectiveness of an Educational Service Center? The Ohio General Assembly recently passed legislation that links ESC effectiveness to saving \$ for school districts but ignores service quality or district needs in evaluating why school districts buy services from ESCs. Founded in 1914 as county boards of education with broad oversight of schools, 101 years later these county boards have evolved into ESCs which sell services to school districts who can buy services from other districts, private providers, or any other ESCs.

Since a picture can be worth a thousand words, charts have been added to the special education and instructional sections to display the depth and breadth of MCESC services provided in districts across 13 counties. The Montgomery County Educational Service Center provides high quality services through a cost effective delivery system. Why else would so many districts choose MCESC over other public and private providers? Quality services must be provided by strong, highly trained and dedicated professional staff and support staff. I want to thank all of the MCESC staff members who work so diligently to improve student lives and assist teachers in reaching higher levels in teaching and learning.

-Frank DePalma, Superintendent
frank.depalma@mcesc.org

MONTGOMERY COUNTY GOVERNING BOARD OF EDUCATION



Daryl M. Michael, Jr.



Gary M. Roberts



Gregg S. Shell



Terry L. Smith



Joy Weaver

Board Members Have Important Role

Each board member brings with him or her a commitment to the cause of educating youth and the desire to serve their communities and the schools through the important role they play in education. This commitment, when combined with the expert knowledge and experience of staff members of the county and local schools, ensures the success of the county local school educational program in meeting the needs of students.

Board members have a broad range of responsibilities including hiring of the superintendent and his staff, approving contracts and policies of the county, and providing oversight activities carried out by staff members.

As elected officials, board members are highly visible in their communities and serve as a resource to informally survey public opinion and facilitate two-way communication between the schools and their publics.

Montgomery County Governing Board of Education

200 South Keowee Street

Dayton, Ohio 45402-2242

Phone: 937/225-4598

Frank DePalma, Superintendent
Christopher Fox, Treasurer

Board Member

Daryl M. Michael, Jr.

Gary M. Roberts

Gregg S. Shell

Terry L. Smith

Joy Weaver

Home District

New Lebanon

Brookville

Valley View

New Lebanon

New Lebanon

Term Expires

Dec. 31, 2019

Dec. 31, 2017

Dec. 31, 2019

Dec. 31, 2017

Dec. 31, 2017

<u>Ohio Board of Education</u>	<u>Ohio Senate</u>	<u>Ohio House of Representatives</u>
Charlotte McGuire (District 3)	Bill Beagle (R-5) Peggy Lehner (R-6)	Fred Strahorn (D-39) Michael Henne (R-40) James Butler (R-41) Jeffery Rezabek (R-43) Niraj Antani (R-42)

MONTGOMERY COUNTY SCHOOL DISTRICTS

<p>Brookville Local Schools 75 June Place Brookville, Ohio 45309 Phone: 937/833-2181 Timothy L. Hopkins, Superintendent</p> 		<p>Jefferson Township Local Schools 2625 South Union Road Dayton, Ohio 45417 Phone: 937/835-5682 Dr. Richard Gates, Superintendent</p> 	
<u>Board Member</u>	<u>Term Expires</u>	<u>Board Member</u>	<u>Term Expires</u>
John Gordon	2019	Rev. Cuttino Dargan	2017
Judy Hoover	2017	Dr. Vilma Helms	2019
Joe Mellon	2017	Johnnie M. Kimberlin	2017
Rick Phillips	2019	Emmett C. Orr	2017
Scott Rutherford	2019	C. V. Mitchell III	2019
<p>Mad River Local Schools 801 Old Harshman Road Dayton, Ohio 45431 Phone: 937/259-6606 Chad Wyen, Superintendent</p> 		<p>New Lebanon Local Schools 320 South Fuls Road New Lebanon, Ohio 45345 Phone: 937/687-1301 Dr. Greg Williams, Superintendent</p> 	
<u>Board Member</u>	<u>Term Expires</u>	<u>Board Member</u>	<u>Term Expires</u>
Julie Denning	2019	Tonya Lankheit	2019
Scott Huddle	2019	Dawn Leonard	2017
Ruth Newhouse	2017	Ronald Moore	2019
Cristina Pickle	2017	Michael Roberts	2017
Marilyn Steiner	2017	David Woodgeard	2017
<p>Northridge Local Schools 2011 Timber Lane Dayton, Ohio 45414 Phone: 937/278-5885 David Jackson, Superintendent</p> 		<p>Valley View Local Schools 59 Peffley Street Germantown, Ohio 45327 Phone: 937/855-6581 Richard Earley, Superintendent</p> 	
<u>Board Member</u>	<u>Term Expires</u>	<u>Board Member</u>	<u>Term Expires</u>
Mark Brumley	2017	Brent Byerly	2017
Tina Fiore	2019	Mark Cline	2017
Margie Glock	2017	Tom Geglein	2019
Glenn Jones	2019	Jenny Michael	2019
Margie Lairson	2019	Angie Valenti	2017
<p>Miami Valley Career Technology Center 6800 Hoke Road, Englewood, OH 45315 Phone: 937/837-7781 Fax: 937/837-5318 Nick Weldy, Superintendent</p>			

MONTGOMERY COUNTY CITY SCHOOLS

Centerville City Schools

111 Virginia Avenue
Centerville, OH 45458
Phone: 937/433-8841
Thomas Henderson, PhD, Superintendent



<u>Board Member</u>	<u>Term Expires</u>
Brad Evers	2017
Clara Osterhage	2017
David Roer	2017
Annie Self	2019
Jeff Shroyer	2019

Dayton Public Schools

115 South Ludlow Street
Dayton, Ohio 45402
Phone: 937/542-3000
Lori Ward, Superintendent



<u>Board Member</u>	<u>Term Expires</u>
Adil Baquirov, PhD	2017
Joe Lacey	2017
Ronald Lee	2017
John McManus	2019
Hazel Rountree, PhD	2017
Sheila Taylor	2019
Robert Walker	2019

Huber Heights City Schools

5954 Longford Road
Huber Heights, OH 45424
Phone: 937/237-6300
Susan Gunnell, Superintendent



<u>Board Member</u>	<u>Term Expires</u>
Kelly Bledsoe	2017
Mark Combs	2017
Tony Cochren	2017
Mike Miller	2019
Krista Tipton	2019

Kettering City Schools

3750 Far Hills Avenue
Kettering, OH 45429
Phone: 937/499-1430
L. Scott Innskeep, Superintendent



<u>Board Member</u>	<u>Term Expires</u>
Jim Ambrose	2017
George Bayless	2017
Julie Gilmore	2017
Jennifer Kane	2019
Lori Simms Parks	2019

Miamisburg City Schools

540 East Park Avenue
Miamisburg, OH 45342
Phone: 937/866-3381
Dr. David Vail, Superintendent



<u>Board Member</u>	<u>Term Expires</u>
Chris Amsler	2017
Sharon Angel	2017
Kathleen M. Bates	2017
Danielle Kuehnle	2019
Dale Toadvine	2019

Northmont City Schools

4001 Old Salem Road
Englewood, OH 45322
Phone: 937/832-5000
Dr. Sarah C. Zatik, Superintendent



<u>Board Member</u>	<u>Term Expires</u>
Linda Blum	2017
Bruce Clapp	2017
Karl "Gerry" Espeleta	2019
Thomas L. Walker, Sr.	2019
Jane Woodie	2017

Oakwood City Schools

20 Rubicon Road
Oakwood, OH 45409
Phone: 937/297-5332
Dr. Kyle B. Ramey, Superintendent



<u>Board Member</u>	<u>Term Expires</u>
Cassie M. Darr	2017
Todd Duwel	2019
Michael A Miller	2017
Meredith Quigley	2019
Linda R. Woods	2017

Trotwood-Madison City Schools

444 South Broadway
Trotwood, OH 45426
Phone: 937/854-3050
Kevin A. Bell, Superintendent



<u>Board Member</u>	<u>Term Expires</u>
Deborah Daniel	2017
Beth Engelhardt	2017
Adrienne L. Heard	2019
Vanessa Jeter-Freeman	2019
Denise E. Moore	2017

Vandalia-Butler City Schools

306 South Dixie Drive
Vandalia, OH 45377
Phone: 937/415-6400
Bradley Neavin, Superintendent



<u>Board Member</u>	<u>Term Expires</u>
Bob Cupp	2017
Mary Kilsheimer	2019
George Moorman	2017
Bruce Sucher	2017
BuRodney Washburn	2019

West Carrollton City Schools

430 East Pease Avenue
West Carrollton, OH 45449
Phone: 937/859-5121
Dr. Rusty Clifford, Superintendent

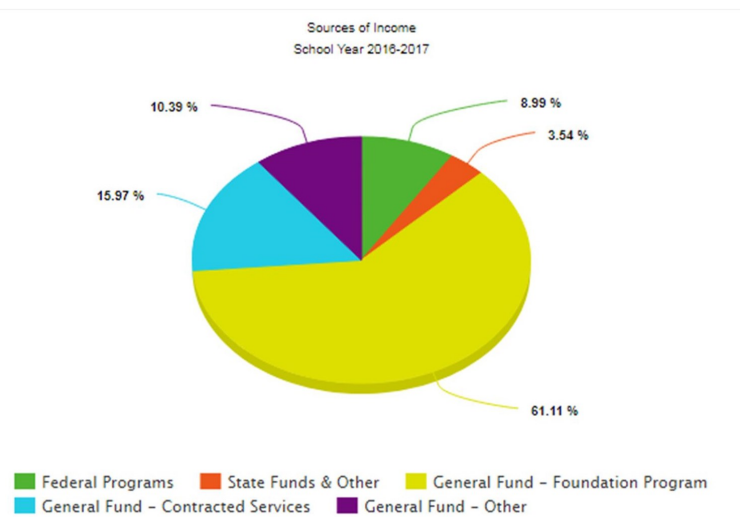


<u>Board Member</u>	<u>Term Expires</u>
Tom Wolf	2017
Debbie Bobbitt	2017
Leslie Miller	2017
Don Henry	2019
Roberta Phillips	2019

FINANCIAL INFORMATION

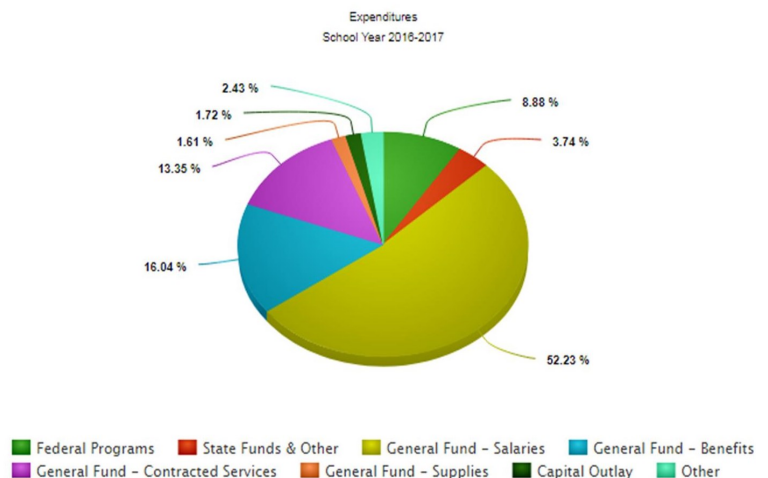
SOURCES OF INCOME - SCHOOL YEAR 2016-2017

Federal Programs	\$ 3,303,534.77	8.99%
State Funds and Other	1,299,892.22	3.54%
General Fund		
<i>Foundation Program</i>	22,442,391.02	61.11%
<i>Contracted Services</i>	5,866,558.85	15.97%
<i>Other</i>	<u>3,815,072.09</u>	<u>10.39%</u>
Total Receipts	36,727,448.95	100.00%
Beginning Balance	<u>17,317,191.86</u>	
Total Receipts Plus Balance	<u>\$54,044,640.81</u>	



EXPENDITURES - SCHOOL YEAR 2016-2017

Federal Programs	\$3,301,112.48	8.88%
State Funds and Other	1,389,525.57	3.74%
General Fund:		
Salaries	19,417,425.01	52.23%
Benefits	5,962,060.79	16.04%
Contracted Services	4,963,449.92	13.35%
Supplies/Materials	599,198.22	1.61%
Capital Outlay	638,604.63	1.72%
Other/Advances/ Transfers	902,882.51	2.43%
Total Expenditures	<u>\$37,174,259.13</u>	<u>100.00%</u>



OFFICE OF HUMAN RESOURCES

EXPERIENCED, DEDICATED EMPLOYEES NECESSARY FOR QUALITY EDUCATION

Experienced and dedicated employees are an important part of the Montgomery County Educational Service Center program.

The Montgomery County Governing Board of Education employed 414 people in 2016-2017, with 245 of them certificated in education. Certificated staff members averaged 17 years of experience in education. (Reported as of October 1, 2016.)

Of those certificated employees, 64 percent had a master's degree, and an additional 6 percent held a doctorate degree. The remainder (30%) held at least a bachelor's degree.

Staff members are encouraged to participate in additional training opportunities such as college course work, workshops, in-service programs, and seminars which apply to their particular area of expertise.

At various times throughout the year, the Montgomery County Educational Service Center Curriculum and Staff Development Office plan workshops dealing with current topics and issues in education. Local school district certificated personnel and teachers or administrators from other area school districts often attend these workshops.

Classified staff members have similar opportunities for participation in workshops which will help to maintain professionalism and update skills used in their jobs.

Certificated and classified employees provide services which support the educational process at the county level, in local school districts, and to other school districts in Montgomery and neighboring counties.

The objective of each employee at the Educational Service Center office is to provide the best services which affect quality education for the students, parents, and communities we serve.

TOTAL STAFF STATISTICS:

By Sex – Male 23.5%, Female 76.5%
By Race – White 89%, Non-White 11%

EXPERIENCE – 13 average years of experience in certificated staff

CLASSIFIED STAFF

Treasurer	1
Assistant Treasurer	1
Secretaries and Clerks	18
Family Consultant.....	2
Educational Assistants	81
Attendance Officers	3
Supervisor	1
Interpreters	3
City/County Cooperative	6
Computer Consultant.....	1
Coordinator of Technology	2
Assistant Maintenance Supervisor.....	1
Assistant Maintenance Director.....	1
Food Service	3
Custodian.....	8
Maintenance Director	1
Other Classified.....	6
Total.....	139

CERTIFICATED STAFF

Superintendent	1
Assistant Superintendents	2
CEO.....	1
Executive Directors.....	2
Directors	10
Principals.....	3
Curriculum Supervisors.....	4
Speech Supervisors.....	1
Transition to Work Coords	2
Special Ed Coordinator.....	1
Special Ed Program Supervisors.....	1
Gifted/Talented Supervisors.....	2
Speech Therapists	15
Teachers ED and MD	54
Tutors	2
Occupational Therapists.....	48
OT Assistant.....	4
Physical Therapists.....	22
PT Assistant	1
Audiologists	3
Psychologists	8
Psychologist Assistants.....	3
Mobility Specialists.....	4
School Nurse	1
Vision Intervention Specialists.....	6
City/County Cooperative	28
Hearing Intervention Specialist	4
State Support Team	23
SOITA Certificated Staff	2
Computer Technologist	1
Assist Sp Ed Prog Supervisor.....	1
Coord/Supervisor	9
Dean of Students	1
School Counselor	1
Other Certified.....	4
Total.....	275

OFFICE OF ADMINISTRATION AND OPERATIONS

The Office of Administration and Operations provide the following services and/or support the following programs:

Attendance Officers

The MCESC employs three attendance officers who provide attendance services for the following school districts in Montgomery County - Brookville, Jefferson, New Lebanon, Northmont, Valley View, and Mound Street Academy. We also provide attendance services to all school districts in Miami County.

Custodial

The MCESC employs eight custodians who provide all of the custodial and cleaning services at Learning Centers East and West, Regional Center, SOITA, and Keowee Street.

Maintenance

The MCESC employs three maintenance staff who provide all of the upkeep, repair, and replacement, of equipment and facilities at Learning Centers East and West, Regional Center, SOITA, and Keowee Street. They also do a great deal of initial construction as needed.

2016-17 major projects included: renovation of the front of the MC building at LC East; installation of new rubber playground surface at LC East; and installation of generators at LC West. Our maintenance team is responsible for daily food service transportation to Learning Centers East and West and YPH (Youth Partial Hospitalization). They are also responsible for mowing and maintaining 17 acres – which is inclusive of all MCESC sites.

Food service

The MCESC provides breakfast and lunch to all students at Learning Center East and West and YPH. Kettering City Schools prepare the food and it is transported daily to each location by our maintenance team.

Safety

All of the MCESC facilities have a “buzz in” front door entrance. We regularly practice “safety drills” with our students. Safety protocols, processes, and procedures are continuously monitored and updated. We utilize a very extensive “camera system” to monitor our facilities.

Transportation

The MCESC contracts with the Mad River City Schools to provide transportation services on an as needed basis. Most school districts transport their own students to our Learning Centers. The MCESC also provides transportation services in an emergency and/or as needed basis.

Client Relationships

The MCESC closely monitors and provides feedback to all of our clients regarding their contracts and billed services. We continue to build user friendly, working relationships and partnerships with all of our more than 90 school districts in a seven county area. The MCESC is the premier special education and related services provider in the State of Ohio.

Dr. Rusty Clifford, Director of Administration and Operations

200 South Keowee Street, Dayton, OH 45402-2242

Phone: (937) 225-4598 Fax: (937)496-7426

rusty.clifford@mcesc.org

DEPARTMENT OF INSTRUCTIONAL SERVICES

The Department of Instructional Services consisted of Curriculum Supervision, Gifted Supervision, The Dayton Regional STEM Center, AmeriCorps Reading Coordination, Western Ohio Service Collaborative Support, Professional Development Specialists, College and Career Transitioning Services, Learn to Earn Dayton, and Shared Services.

While our staff is thought of to be experts in their various fields, we are always learning new skills and content to meet the needs of our districts. Additionally, we continue to stay on top of state initiatives and best practices to provide the quality training and professional development we are known for in the region.

Our department continues to build a robust menu of options in response to the state's Career Connection mandates. This year ThinkTV partnered with us, to create a video series which serves as a complimentary resource to our "I Can Be Anything I Want To Be, A-Z." We have been able to finish and offer our current four Workforce Sector courses geared for exploration and planning for 9-12 graders. The 2016-2017 year was also the year we began creation of our middle school career curriculum, Career Adventures. We hope to pilot the first nine week module in January 2017.

The DRSC finished its tenth year. The flagship programming is our nationally recognized STEM Fellowship. Our replication of the STEM Fellows programming in Warner Robins, GA on behalf of the United State Air Force was a huge success. DRSC continues to provide materials, consultation and customized professional development to individual educational entities. Among other activities, DRSC hosted its second Annual STEM Conference. With over 200 attendees, the conference received positive feedback and again hosted national presenters.

This was our third year providing AmeriCorps Reading Tutor Coordination. This opportunity assisted districts in providing reading instruction to K-3 students in an intentional attempt to avoid students being retained in third grade due under state mandates.

The Instructional Service Department at Montgomery County ESC is, like other departments, a very busy group of staff members. It is our joy and our privilege to support districts on behalf of the 65,000 students in Montgomery County, as well as the kids of Ohio in general.

- **In addition to the districts noted in the charts that follow, trainings were held in other locations in Miami, Greene, Preble, and Darke Counties. MCESC also provided training to:**

MC Juvenile Court; 1
Private Schools; 21
Career Centers (JVS); 4

ESCs not listed; 2
University Dayton; 1
Wright State University; 1

- ****Content specific PD includes: APEX; Mental Health First Aid; Summer Rise**

Custom PD per district/organization:

Girl Scouts	Dept. of Youth Services
Valley View/PD	Huber Heights/PD
Bridge Program	ACT Overview
C.A.M	WSU Reading Endorsement

Cohorts/Collaboratives:

WOSC	MC Principals Institute
MC Master Teacher	MC Faculty Fellows
MVRCD	MC Counselors Academy
Summer RISE	

Shannon Cox, Associate Superintendent
Director of Administration and Operations
 200 South Keowee Street, Dayton, OH 45402-2242
 Phone: (937) 225-4598 Fax: (937) 496-7426
Shannon.cox@mcesc.org

District	Overcoming the Achievement Gap	OPES	*Resident Educator Academy	Air Test Data	**Content Specific	A-Z Curriculum	Career Connections	Ohio School Counselor Evaluation (OSCES)	Problem Based Learning	Counselor Industry Tours	STEM Center	*Opiate Education
Montgomery County												
Brookville Local				X	X	X	X				X	
Centerville City	X		X					X	X			
Dayton Public	X	X		X			X	X	X		X	X
Dayton Regional STEM												
Huber Heights City	X		X	X	X	X	X	X		X		X
Jefferson Township Local												
Kettering City			X	X	X	X	X			X	X	
Mad River Local			X	X	X		X	X			X	X
Miamisburg City	X				X	X	X	X		X	X	X
Mont. Cty ESC	X	X		X	X	X	X	X	X	X	X	
New Lebanon Local	X		X		X	X	X	X	X			X
Northmont City		X		X	X		X				X	X
Northridge Local	X		X	X		X	X			X	X	X
Oakwood City			X	X							X	
State Support Team												
Trotwood-Madison City			X	X	X		X	X				
Valley View Local			X				X			X	X	
Vandalia-Butler City				X	X		X					
West Carrollton City			X				X	X				
Clark County												
Clark County ESC			X									
Clark Shawnee Local												
Greenon			X									
Northeastern Local			X	X								
Northwestern Local	X	X	X	X								
Southeastern Local			X	X								
Springfield City								X	X			
Springfield Clark CTC												
Tecumseh Local			X	X								

MCECSC ANNUAL REPORT 2016-17

[illegible]

MCESC ANNUAL REPORT 2016-17

[illegible]

District	Overcoming the Achievement Gap	OPES	*Resident Educator Academy	Air Test Data	**Content Specific	A-Z Curriculum	Career Connections	Ohio School Counselor Evaluation (OSCES)	Problem Based Learning	Counselor Industry Tours	STEM Center	*Opiate Education
Others												
Anna Local								X				
Bellefontaine City			X									
Botkins Local												
Cincinnati Public								X				
Edgewood City												
Fort Loramie Local												
Hamilton City		X	X					X				
Hamilton County ESC								X				
Hardin Houston Local												
Lakota Local			X									
Licking County ESC												
London City			X									
Miami Trace												
Miami Valley CTC			X								X	
Middletown			X									
Monroe			X									
Mound Street					X							
Princeton City												
Shelby County ESC												
Sidney City												
Talawanda			X					X				
Triad Local												
Urbana Local	X											X
Warren County ESC			X									
West Liberty Salem Local												
Wilmington												
Wyoming												

OFFICE OF STUDENT PROGRAMS

The Office of Student Programs provides a variety of direct classroom services to prepare students to meet academic, social, cultural, civic, and employment needs. Each student's educational program is designed to provide an opportunity for independence as adults. The program for students with multiple disabilities had 172 students in twenty classrooms. The program for students with emotional disabilities had 214 students in fifteen classrooms. Intervention Specialists and Educational Assistants also worked with students at South Community's Youth Partial Hospitalization Program and at the KBMC Mental Health Program.

Student community activities included several experiences with fine art activities as well as volunteer work activities at many sites. High school MD students participated in a talent show. Such educational field trips and experiences help students to learn the independent living skills necessary to participate in social settings. Highlights of the year included the annual MD prom, MD graduation, and an ED Senior Celebration.

Career Planning services focused on community training locations including retail stores, restaurants, hospitals, and service companies. Emphasis was placed on developing the skills necessary for the workplace and independent living.

The Preschool Program for students with hearing impairments, located in Kettering, is unique. The program emphasizes teaching verbal communication and accepts students who demonstrate the desire and ability to develop spoken language.

2016-17 COUNTY OPERATED PROGRAM ENROLLMENT

Program	Total	Female	%	Male	%	White	%	Non-White	%
MD	172	39	23	133	77	92	53	80	47
ED	214	51	24	163	76	121	57	93	43
Hearing Impaired	6	2	33	4	67	6	100	0	0
Totals*	392	92	23	300	77	219	56	173	44

Speech/Language Supervision

The Speech/Language Supervisor consults with speech/language pathologists in the Montgomery County area. The Speech/Language Supervisor ensures that our region receives high quality, best practice service by providing compliance consultation, theory, evaluation, and diagnostic/treatment support. Customized professional development and Clinical Fellowship supervision is also available.



Jessica Davies, Director of Student Programs
 200 South Keowee Street, Dayton, Ohio 45402
 Phone: 937-224-8087
jessica.davies@mcesc.org

MCESC SPECIAL EDUCATIONAL SERVICES

2016-17 SCHOOL DISTRICTS SERVED

State and federal laws require Ohio public school districts to provide a variety of services that are specified on a student's Individualized Educational Program (IEP), 504 Plan, etc. The MCESC's highly qualified professionals provide these services to students and districts in a timely and cost effective manner. The breadth and depth of these services are outlined in this section.

DIRECT CLASSROOM SERVICES

CLASSES FOR STUDENTS WITH EMOTIONAL DISTURBANCES

CLASSES FOR STUDENTS WITH MULTIPLE DISABILITIES

CLASS FOR HEARING IMPAIRED STUDENTS

MCESC operated classrooms to provide DIRECT CLASSROOM SERVICES at three sites which housed 392 students with emotional disturbances or multiple disabilities in the 2016-17 school year. These students came from 26 school districts in six counties. Students met with highly qualified teachers, dedicated assistants and related special education intervention specialists to meet all educational goals outlined in each student's IEP. Six students attended a specialized pre-school class for with hearing loss and speech impairment.

This class has a STEP UP TO QUALITY rating of five stars, the highest rating in Ohio's pre-school report card system.

DIAGNOSTIC SERVICES

ASSESSMENT TEAM EVALUATIONS

AUTISM TEAM EVALUATIONS

The ASSESSMENT TEAM and AUTISM TEAM provide required and needed student diagnostic evaluations to identify student needs and assist teachers in developing specific strategies to help students learn and improve. These two teams provided services to students and teachers in 55 school districts in an eight county area.

RELATED SPECIAL EDUCATION SERVICES

AUDIOLOGY/HEARING INTERVENTION SERVICES

OCCUPATIONAL THERAPY SERVICES

PHYSICAL THERAPY SERVICES

SCHOOL PSYCHOLOGY SERVICES

SPEECH LANGUAGE PATHOLOGY SERVICES

VISION INTERVENTION SERVICES

The highly trained specialists in the RELATED SPECIAL EDUCATION SERVICES traveled to 67 school districts in a thirteen county area. Districts contract for these required but specialized services to obtain high quality services for their students in the most cost effective manner possible.

THE MONTGOMERY COUNTY EDUCATIONAL SERVICE CENTER IS PROUD OF THE STAFF THAT PROVIDES SUCH A HIGH QUALITY SERVICE TO STUDENTS SO THAT THEY CAN REACH THEIR ACADEMIC AND PERSONAL POTENTIAL.

MCESC SPECIAL EDUCATION SERVICES PROVIDED BY DISTRICT

DISTRICT	HEARING	VISION	ASSESSMENT	ED	MD	OT	PT	PSYCH	SPEECH	AUTISM
Montgomery County										
Brookville	X		X	X	X	X	X	X		X
Centerville City	X	X	X	X	X	X				X
Dayton Public		X	X	X	X	X				X
Huber Heights City	X	X	X	X	X	X	X	X	X	X
Jefferson Township Local			X	X	X	X	X		X	X
Kettering City	X	X	X	X	X					X
Mad River Local	X	X	X	X	X	X	X		X	X
Miamisburg City	X	X	X	X	X		X			X
New Lebanon Local		X	X	X	X	X	X		X	X
Northmont City	X	X	X	X	X	X	X			X
Northridge Local	X		X	X	X	X	X		X	X
Oakwood City	X	X	X	X		X	X			X
Trotwood-Madison City	X	X	X	X	X	X	X			X
Valley View Local	X	X	X	X	X	X	X	X	X	X
Vandalia-Butler City	X	X	X	X	X	X	X	X		X
West Carrollton City	X	X	X	X	X	X	X		X	X
Montgomery County ESC	X	X				X	X		X	
Darke County										
Ansonia Local			X			X	X			X
Arcanum-Butler Local	X	X	X			X	X			X
Franklin-Monroe Local	X		X			X	X			X
Greenville City	X		X							X
Mississinawa Valley Local	X		X			X	X			X
Tri-Village Local		X	X			X	X			X
Versailles Local	X	X	X	X		X				X
Darke County ESC										
Miami County										
Bethel Local	X	X	X	X	X		X			X
Bradford Exempt Village	X	X	X			X	X			X
Covington Exempted Village			X				X			X
Miami East Local	X		X				X			X
Milton-Union Exempted Village		X	X			X	X			X
Newton Local		X	X				X			X
Piqua City	X	X	X		X		X			
Tipp City Exempted Village	X	X	X				X			X
Troy City	X	X	X		X		X			X
Miami County ESC										
Preble County										
Eaton Community City	X	X	X			X	X			X
National Trail Local		X	X			X	X			X
Preble Shawnee Local			X							X
Tri-County North Local	X		X			X	X			X
Twin Valley Community Local		X	X			X	X			X
Preble County ESC		X								

MCESC SPECIAL EDUCATION SERVICES PROVIDED BY DISTRICT

DISTRICT	HEARING	VISION	ASSESSMENT	ED	MD	OT	PT	PSYCH	SPEECH	AUTISM
Greene County										
Beavercreek City	X		X	X						X
Bellbrook-Sugarcreek Local	X		X		X					
Cedarcliff	X		X	X						X
Fairborn City	X		X	X	X					X
Greeneview Local	X		X							X
Xenia Local	X		X	X	X					X
Yellow Springs Exemp Village			X							X
Greene County ESC										
Clark County										
Tecumseh Local	X	X	X		X					X
Clark-Shawnee Local		X	X							X
Greenon Local	X	X	X							X
Northeastern Local	X	X	X							X
Northwestern Local			X							
Southeastern Local	X	X	X							X
Springfield City	X		X							X
Warren County										
Carlisle	X	X								
Franklin City Schools	X	X			X					
Springboro City										
Wayne Local	X									
Logan County										
Benjamin Logan Local	X									
Indian Lake Local	X									
Madison County										
Madison-Champaign ESC	X	X								
Mercer County										
Celina	X									
Coldwater	X									
Fort Recovery	X	X								
Marion Local	X									
Parkway	X									
St. Henry	X									
Mercer County ESC										

MCESC SPECIAL EDUCATION SERVICES PROVIDED BY DISTRICT

DISTRICT	HEARING	VISION	ASSESSMENT	ED	MD	OT	PT	PSYCH	SPEECH	AUTISM
Shelby County										
Sidney City	X									
Auglaize County										
Mintster	X									
New Bremen	X									
St. Mary's	X	X								
Other										
City Day Community School						X				
Dayton Leadership Academy						X	X			
Dayton Regional STEM School						X	X		X	
Dayton SMART Elementary						X			X	
DECA PREP				X	X					
EAT-MCESC Assessment Team for all participating districts						X				
Emerson Academy				X	X					
Horizon Science Academy Downtown							X			
Horizon Science Academy Elementary							X			
Imagine Woodbury Academy						X				
Mound Street Academy								X		
National Heritage Academy				X						
North Dayton School of Discovery				X						
Pathway School of Discover				X						
Richard Allen Charter School (Montgomery County)						X				
St Albert the Great						X			X	
Wyoming City Schools					X					

MIAMI VALLEY REGIONAL CENTER



The Miami Valley Regional Center works closely with school districts across Clark, Darke, Greene, Miami, Montgomery and Preble counties, as well as neighboring districts, to provide cost-effective programs and services to children with special needs.

Specially trained staff provides support for students with impairments in vision, hearing, and orientation and mobility, as well as those needing occupational and physical therapy.

Additionally, the Regional Center can assist with the identification of youngsters in need of special services as well as with the development and implementation of the services they need. The staff works closely with students, their parents, and school districts to maximize their opportunity for success.

REGIONAL CENTER SERVICES PROVIDED BY:

Assessment Team
Audiology/Hearing Intervention
Autism Coaching Team
Orientation and Mobility Specialists
Occupational Therapists
Physical Therapists
Vision Intervention
Region 10 State Support Team
Ready Set Soar

REGIONAL CENTER LIBRARY

The Regional Center Library, sponsored by the Montgomery County Educational Service Center, operates a lending library of professional resources, instructional materials and switch toys available for loan to stakeholders in our six-county region. Additionally, we offer disability awareness programs and limited instructional materials development services, such as Board Maker software and laminating services.

During the 2016-17 school year, the Montgomery County ESC purchased new instructional materials and resources for the Regional Center Library and upgraded the library management software.

Approximately 463 items were checked out of the Regional Center Library during the 2016-17 school year.



Tom Dunn, Regional Center Administrative Supervisor

4801 Springfield Street, Riverside, Ohio 45431

Phone: 937/236-9965

Fax: 937/233-0161

tom.dunn@mcesc.org

**Diagnostic Services/Related Special Education Services
Educational Assessment Team/Hearing Intervention/ Vision Intervention/
Orientation and Mobility Services**

Service	Number of LEAs Served (includes Community Schools)	Estimated Number of Buildings Served	Estimated Number of Teachers Impacted	Estimated Number of Families Impacted
	2016-2017	2016-2017	2016-2017	2016-2017
Assessments	41	109	218	176
Vision	41	100	200	100
Hearing	57	151	302	151
	Total Number of Offerings		Estimated Number of Attendees	
Assessment (EAT)	6		211	
Vision	410		500	
Hearing	305		300	
School Family Facilitation	0		0	

Christy Donnelly
EAT Project Coordinator/Assistant Administrative Supervisor
Phone: 937-236-9965
Fax: 937-233-0161
Email: Christy.donnelly@mcesc.org

OCCUPATIONAL & PHYSICAL THERAPY (OT/PT) SERVICES

Number of LEAs Served* Includes Community Schools	Number of Buildings Served*	Number of Students Served By Receiving Ongoing Therapy-By Discipline		Number of Students Served by Screening/ Classroom Group, etc.		OT/PT Combined Total Students Served	Estimated Number of Families/ Professionals Impacted
44 districts	179 buildings	OT: 2,719	PT: 1,066	OT: 702	PT: 858	5,345	>8,000

OT/PT EQUIPMENT OPEN HOUSE

An equipment open house was held on August 19, 2016 to showcase recently purchased equipment. This equipment purchase updated our inventory with current items to enhance student learning opportunities. These items are available for trial or loan to our member districts.



UNIVERSITY SUPPORTS FOR SCHOOL-BASED THERAPY SERVICES

The OT/PT Department continues to provide clinical affiliations with 13 universities/community colleges in an effort to educate students about the unique field of pediatric school-based practice. Contractual Affiliations for OT/PT/OTA/PTA Students totaled 28; 21 OT/OTA and 7 PT students.

The schools represented include University of Dayton, Kettering, University of Findlay, Shawnee State, Rhodes, Andrews University (Michigan) and Sinclair

Ongoing Representation and Leadership by the OT/PT Department on University/College Advisory Boards and University Adjunct Faculty: 1.) University of Dayton (UD), Doctor of Physical Therapy Program, Advisory/Curriculum Council, 2.) two staff members serve as adjunct faculty for the UD Doctor of Physical Therapy Program and 3.) 12 other OTs and PTs participated in pediatric equipment labs and student tutorials.

SCHOOL MEDICAID CHANGES

After a complicated year of MSP changes, it was determined that it was necessary for OTs and PTs to become official Medicaid providers if they were to continue documenting for MSP (Medicaid Schools Program) billing. Legislative changes enabled OTs and PTs to make the referral necessary for districts to bill MSP without the use of an outside Medicaid Ordering Referring and Prescribing provider. There were 5 sessions offered in the OT/PT Department to provide assistance to therapists to ensure that forms were completed properly for the school based provider. Additionally, the department made a successful transition to new ICD-10 coding and documentations for evaluations.

MOST RECENT CUSTOMER SATISFACTION SURVEY RESULTS		
Total Department Surveys	Average Score	Percentage Rated Good/ Excellent
1036	4.82/5.0	96%

Cheryl VanHoose, MHS, PT, Director of Occupational Therapy/Physical Therapy
 Phone 937-236-9965 Fax: 937-233-0161
cheryl.vanhoose@mcesc.org

Autism Coaching Team (ACT)

The Autism and Low Incidence Coaching Team (ACT) is in its 8th year at the Regional Center. The mission of the ACT program is to build the capacity of school district personnel to support and serve students with autism and low incidence disabilities with evidence based practices. The team serves participating school districts in Darke, Preble, Miami, Montgomery, Clark, and Greene counties.

The team consists of administrative consultant and behavior specialist Lisa Combs, intervention specialist Allison Officer, occupational therapists Susan Aebker and Lynn DeMange, and speech and language pathologist Carol Dittoe. The ACT coaches support participating school districts in a variety of ways, including job embedded coaching (for individual students and classrooms), professional development sessions, classroom support plans, sensory assessments and recommendations, functional communication inventories, and behavior planning assistance.

The ACT program also shares many instructional resources on social media sites, including Facebook, Pinterest, and Boardmaker Share. A highlight of the ACT program is the A-LIST, which is a network of exemplar teachers and other service providers, who serve as invaluable partners to the ACT coaches in providing support to the region's teachers and therapists. You can learn more about ACT services and connect to their social media sites at www.mcesc.org/content/ACT

	Job Embedded Coaching Teams Served	Traditional Professional Development Participants	A-LIST network
Number of referrals/ participants	349 teams	749	80
Number of School Districts Served	38	27	25
Number of Counties Served	6	6	6

Lisa Combs, Coordinator
 (937) 236-9965 x2242
lisa.combs@mcesc.org

REGION 10 STATE SUPPORT TEAM

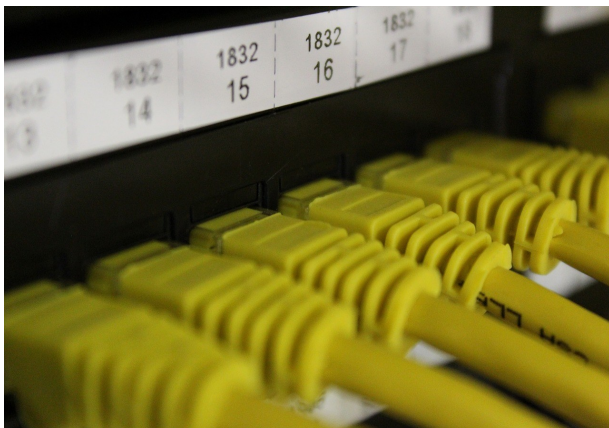
Service	Number of LEAs Served* Includes Community Schools		Estimated Number of Buildings Served*		Estimated Number of Teachers Impacted*		Estimated Number of Families & Community Impacted*
	2016-2017		2016-2017		2016-2017		2016-2017
School Improvement <i>Support Levels identified by ODE's Differentiated Accountability Formula</i>	Intensive	2	Focus Schools:	14	Focus Schools:	630	1100
	Moderate D/F	19	Watch Schools:	126	Watch Schools:	4,158	
	Moderate C	12	Others:	90	Others:	2,970	
52 districts 31 community schools	Total: 62		244		7,758		1500
Special Education Services, Technical Assistance & Supports	76		296		1,150		1,250
Early Learning & School Readiness	60		149 (include pre-schools)		750		14,000
	Total Number of Offerings				Estimated Number of Attendees		
Professional Development Offerings for All Support Areas	116				2886** **number includes educators and families who may have attended multiple events.		
	KRA/ELA Trainings: 27				KRA/ELA Trainings: 367		

**Provide technical assistance (onsite coaching), professional development, and building capacity of administrators, educators, and families using data to identify and define levels of support needed. ODE, OEC, and ELSR initiatives provide guidance within the scope of work for State Support Teams across Ohio.*

Betsy Apolito, Director of School Improvement
 Region 10 State Support Team
 Phone: 937-236-9965
 Fax: 937-233-0161
 Email: betsy.apolito@mcesc.org



MCESC TECHNOLOGY DEPARTMENT



Matt Lewis,
Board Office
Jon Elzey,
Regional Center
Corey O'Connor
William Griffith,
West Learning Center

Technology Support Phone: 937-225-4606
Fax: 937-259-5764



The Montgomery County ESC Technology Department provides purchasing advice, installation, inventory, and support services for over fourteen hundred desktop computers, notebooks, Chromebooks, and tablets and the associated internal networks that keep them connected to data from the outside world.

The technology department provides services to end users such as:

- selecting appropriate hardware and software
- ensuring that daily data backups are running correctly
- Answering desktop user questions

Responsibilities also include PDExpress updates, maintaining antivirus and malware signatures, and maintaining the county email system.

The Federal Erate program, which last year provided over \$50,000.00 in rebates and discounts for the district is also managed by the department. In 2015 with the awarding of a Straight A grant we purchased additional electronic resources and technology for use in classrooms. The added technology consisted of Chromebooks, Laptops and Smart® interactive flat panels.

We also added an additional technician to assist in implementing and supporting this added technology in the county classrooms.

Supported sites are Special Programs Learning Center classrooms, the Administration Building, and the Miami Valley Regional Center.

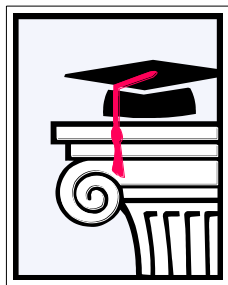
MCESC WEBSITE DIRECTORY

Montgomery County ESC home page..... www.mcesc.org
Employment.....www.mcesc.org/content/employment
Administrative Departments..... www.mcesc.org < “About Us”
Miami Valley Regional Center..... www.mcesc.org/MVRC/home

This report can also be viewed on our website at www.mcesc.org/board

Montgomery County ESC is committed to making our information accessible to individuals with disabilities and we make every effort to follow the standards set forth by WCAG 2.0 guidelines.

This page intentionally left blank for printing.



MONTGOMERY
C O U N T Y
E D U C A T I O N A L
S E R V I C E
C E N T E R

Montgomery County Educational Service Center

200 South Keowee Street

Dayton, Ohio 45402-2242

(937) 225-4598

(937) 496-7426 (Fax)

www.mcesc.org