



FutureThink

Formerly DeJONG-HEALY

FINAL REPORT



OHIO FACILITIES CONSTRUCTION COMMISSION

Lakota Local School District

Butler County

Enrollment Projections

August 25, 2020

INTRODUCTION

Based on a request from the Ohio Facilities Construction Commission, **FutureThink** was contracted to develop enrollment projections for the Lakota Local School District.

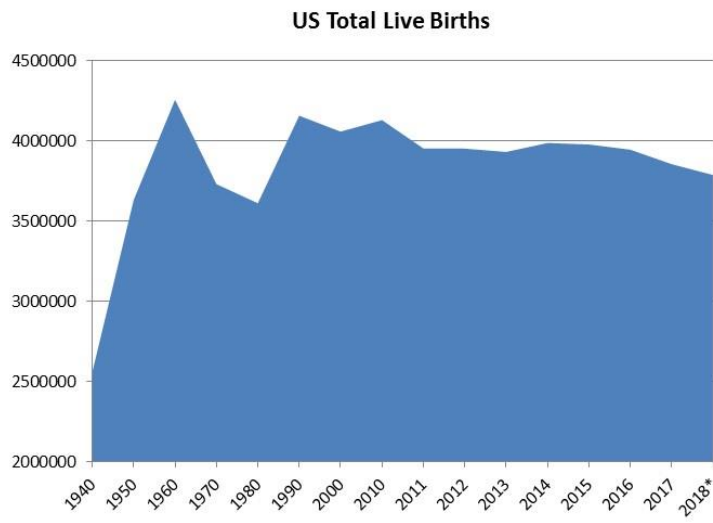
This report contains ten-year enrollment projections, which were developed for the Lakota Local School District by analyzing the following data:

- ▶ Live birth data
- ▶ Historical enrollment
- ▶ Community school enrollment
- ▶ Open enrollment
- ▶ Community demographics
- ▶ Housing information

The projections presented in this report are meant to serve as a planning tool for the future and represent the most likely direction of the District.

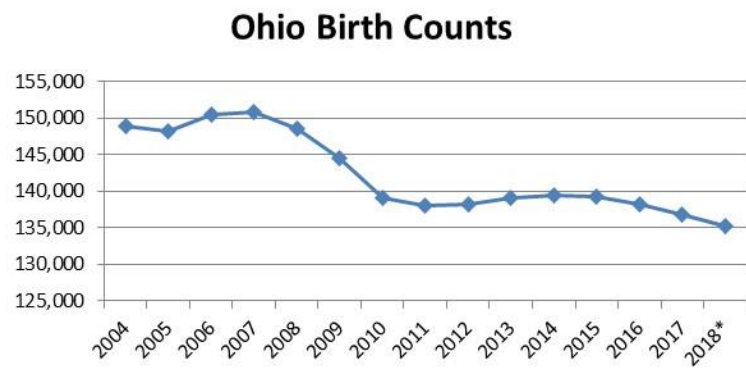
NATIONAL & OHIO TRENDS IN ENROLLMENT

Tracing the landscape of the country’s public school enrollment back over the past 70+ years reveals demographic, economic, and social changes. The United States as a whole continues to undergo major shifts in public student enrollment. The baby boom of the late 1940s and 50s was followed by the baby bust of the 1960s and 70s. An “echo” baby boom occurred in the 1980s, which then was followed by the echo baby bust from 1990 to 2000. There was a slight uptick from 2000 to 2010. Since 2011, the total number of births has been relatively flat with decline in 2017 and 2018.



Source: CDC, National Vital Statistics Reports, Rapid Release, Report 007, May 2019
*provisional

Ohio has experienced a similar trend in live births as seen around the country. Births increased slightly in 2006 and 2007 but then declined to an all-time low of 138,024 in 2011. In 2012, 2013, and 2014, there were slight increases, but counts have declined each year since then.

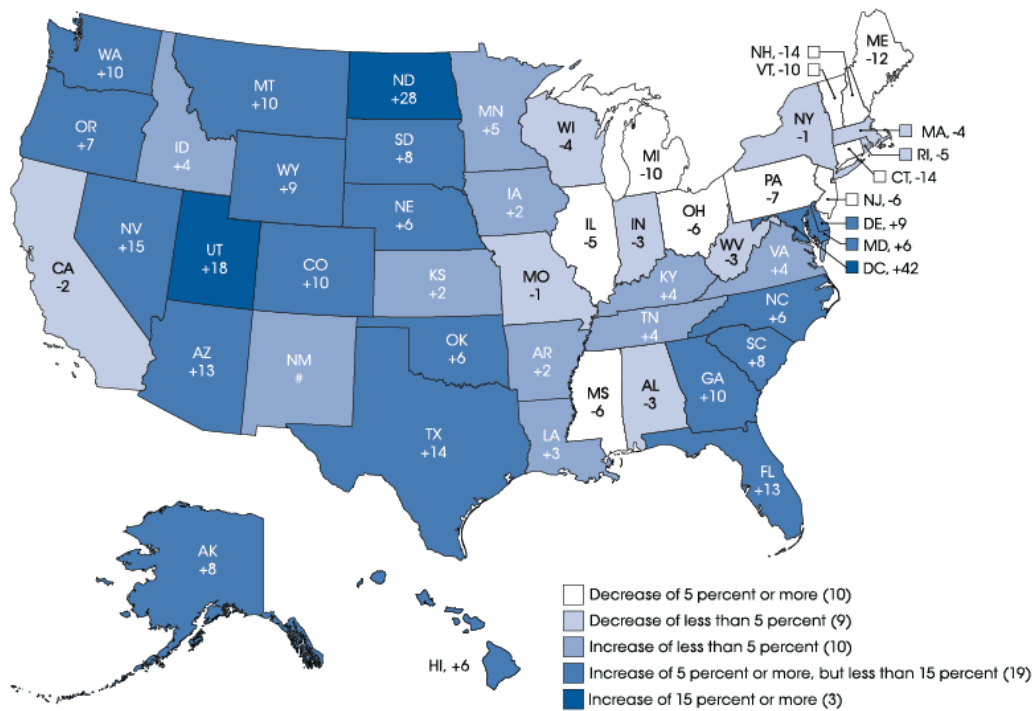


Lakota Local School District

In addition, to births dropping in Ohio, the state is also aging. The median age in 2017 was 39.9 years of age while the national median age is 37.9 years. In 2010, the median age in Ohio was 38.3 years.

In 2014-15, approximately 56 million students were enrolled in grades Pre-K-12 in the United States, an increase of 3% since the 2011-12 school year. Overall, enrollment is projected to increase by approximately 3% by the 2026-27 school year.

The figure below illustrates the projected change in Pre-K-12 public school enrollment from the 2014-15 to the 2026-27 school year. Growth is expected to continue primarily in the southeast and west. Washington, D.C.; North Dakota; and Utah are projected to experience the most growth. Ohio is projected to experience a decrease of 6 percent.



SOURCE: U.S. Department of Education, National Center for Education Statistics, Common Core of Data (CCD), "State Nonfiscal Survey of Public Elementary/Secondary Education," 2014-15; and Public State Elementary and Secondary Enrollment Model: 1980-2026. See *Digest of Education Statistics 2016*, [table 203.20](#).

Lakota Local School District

In Ohio, enrollment has declined steadily for both public and non-public school enrollment. From 2009-10 to 2018-19, public school enrollment declined by 149,775 students or approximately 8% statewide.

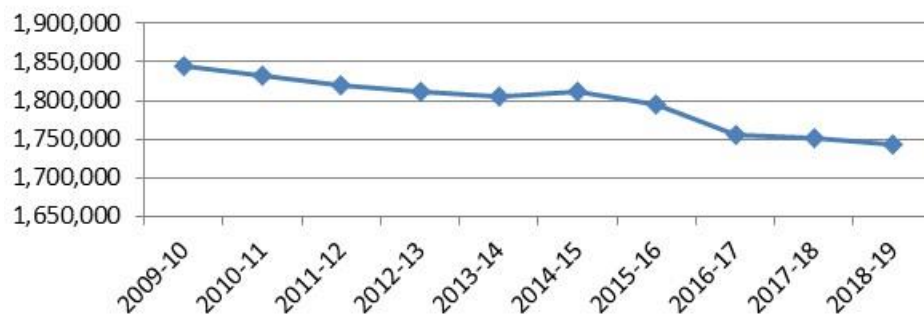
Ohio Public School Enrollment 2009-10 - 2018-19

Year	October Headcount*
2009-10	1,844,447
2010-11	1,832,832
2011-12	1,820,312
2012-13	1,811,532
2013-14	1,806,267
2014-15	1,810,577
2015-16	1,795,339
2016-17	1,755,552
2017-18	1,751,888
2018-19	1,742,715

Source: Ohio Department of Education

*includes grades K-12 and ungraded

Ohio Public School Enrollment



Lakota Local School District

From 2008-09 to 2017-18, private school enrollment has declined by 26,486 students or 14 percent.

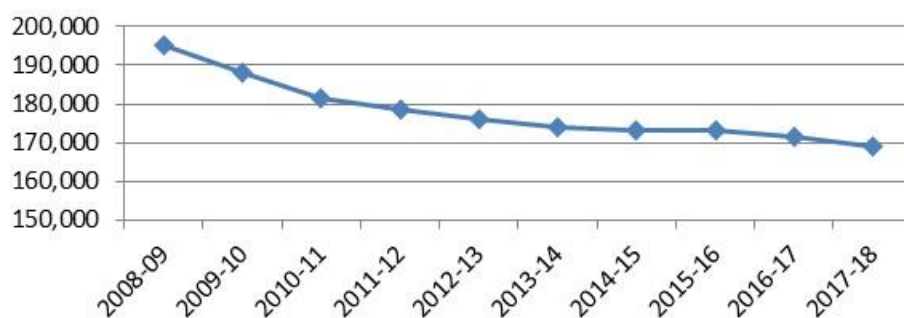
Ohio Chartered Non-Public School Enrollment 2008-09 - 2017-18

Year	October ADM*
2008-09	195,343
2009-10	187,994
2010-11	181,420
2011-12	178,702
2012-13	176,166
2013-14	173,966
2014-15	173,030
2015-16	172,990
2016-17	171,426
2017-18	168,857

Source: Ohio Department of Education

*includes grades K-12

Ohio Non-Public School Enrollment



Lakota Local School District

Out of 610 school districts, only 89 (or approximately 15%) gained enrollment in grades K - 12 from the 2008-09 to the 2017-18 school year. Of the 521 school districts who lost enrollment, only 72 (or 14%) lost less than 5 percent, and 108 districts (or 21%) lost between 5 and 10 percent. Approximately 46% (or 240 districts) lost between 10 and 20 percent.

For those districts that gained enrollment, 54% increased by less than 5 percent. Of the 10 districts with the greatest increase in students, one is located in Delaware County and seven in Franklin County.

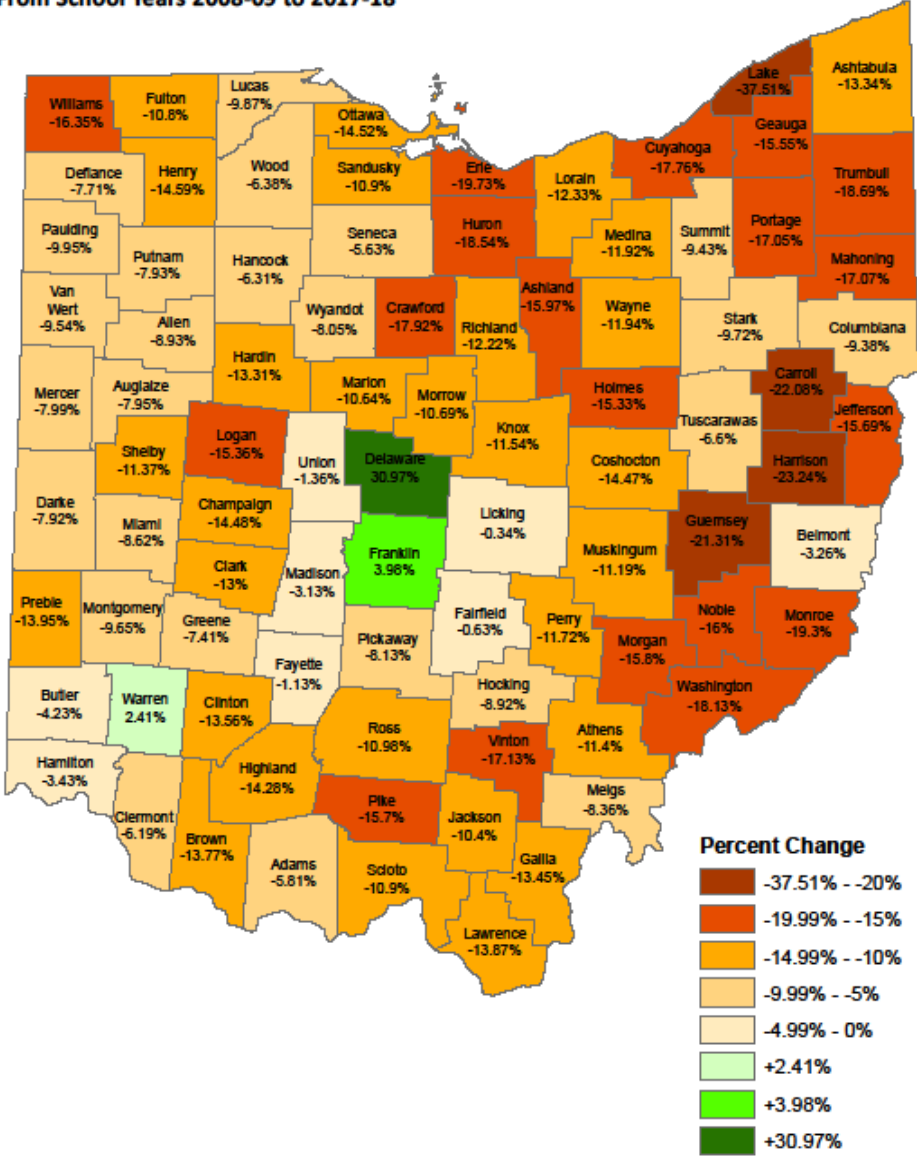
Analyzing enrollment from a county perspective, only 3 of the 88 counties in Ohio gained K – 12 enrollment from the 2008-09 to the 2017-18 school year: Delaware, Franklin and Warren.

County	Percentage Gain
Delaware	30.97%
Franklin	3.98%
Warren	2.41%

Lake County had the highest percentage loss of students at 37.54 percent. Fifty-nine percent of the counties (52 total) experienced a decline of greater than 10 percent. The map on the following page illustrates the gain/loss for each county from the 2008-09 to the 2017-18 school year.

Lakota Local School District

Student Enrollment Growth/Loss
From School Years 2008-09 to 2017-18



ENROLLMENT PROJECTION METHODOLOGIES

When projecting future enrollments, it is vital to track the number of births, the patterns of enrollment, the amount of new housing activity, and the change in household composition.

In addition, any of the following factors could cause a significant change in projected student enrollments:

- ▶ Boundary adjustments
- ▶ New school openings
- ▶ Changes/additions in program offerings
- ▶ Preschool programs
- ▶ Change in grade configuration
- ▶ Interest rates/unemployment shifts
- ▶ Magnet/charter/private school opening or closure
- ▶ Zoning changes
- ▶ Unplanned new housing activity
- ▶ Planned, but not built, housing

Obviously, certain factors can be gauged and planned for far better than others. For instance, it may be relatively straightforward to gather housing data from local builders regarding the total number of lots in a planned subdivision and calculate the potential student yield. However, planning for changes in the unemployment rate, and how these may either boost or reduce public school enrollment, proves more difficult. In any case, it is essential to gather a wide variety of information in preparation for producing enrollment projections.

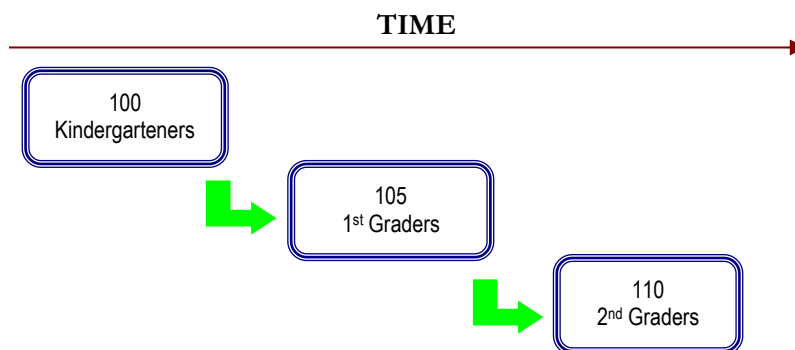
When looking ahead at a school district's enrollment over the next two, five, or ten years, it is helpful to approach the process from a global perspective. For example: How many new homes have been constructed each year? How many births have occurred each year in relation to the resident population? Is housing experiencing a turnover – if so, what is the composition of families moving in/out? Are more or less students attending private school or being home-schooled? What new educational policies are in place now that could affect student enrollment figures?

The data sets generated from questions such as these have led to the development of general methodologies to project future student enrollments. They are as follows:

Lakota Local School District

Cohort Survival Method

A cohort is a group of persons [in this case, students]. The cohort survival projection methodology uses previous live birth data and historical student enrollments to “age” a known population or cohort throughout the school grades. For instance, a cohort begins when a group of kindergarteners enrolls in grade K and moves to first grade the following year, second grade the next year, and so on.



A “survival ratio” is developed to track how this group of students grew or shrunk in number as they moved through the grade levels. By determining survival ratios for each grade transition [i.e., 1st to 2nd grade] over a ten-year period of time, patterns emerge and projection ratios can be developed to be used as a multiplier.

For example, if student enrollment has consistently increased from the 8th to the 9th grade over the past ten years, the survival ratios for each year would be greater than 100 percent. Through analysis of the survival ratios, the projection ratio is determined and is multiplied by the current 8th grade to develop a projection for next year’s 9th grade.

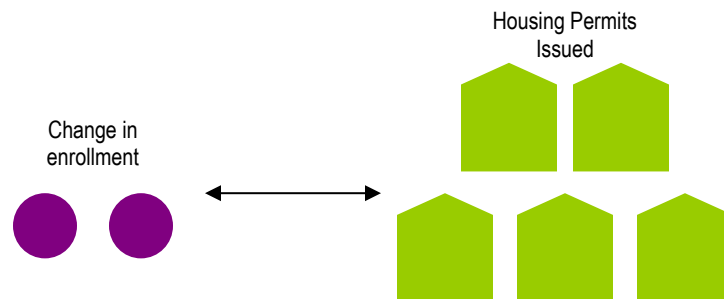
This methodology can be carried through to develop ten years of projection figures. Because there is not a grade cohort to follow for students coming into kindergarten, live birth counts are used to develop a survival ratio. Babies born five years previous to the kindergarten class are compared in number, and a ratio can be developed to project future kindergarten enrollments.

The cohort survival method is useful in areas where population is stable [relatively flat, growing steadily, or declining steadily], and where there have been no significant fluctuations in enrollment, births, and housing patterns from year to year.

Lakota Local School District

Housing

Enrollment projections can also be determined by analyzing the housing data for the areas that make up a school district. Yield factors can be established by comparing the historic change in enrollment from year to year divided by the total number of building or occupancy permits issued. For example, if student enrollment has increased by approximately 100 students each year and approximately 200 building permits have been issued each year for the past ten years, then the yield factor would be approximately .5 students per building permit.



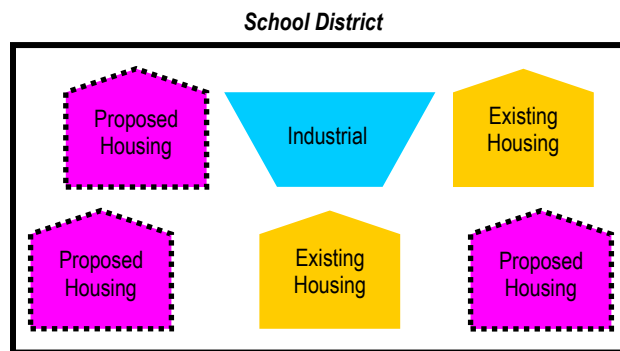
Once yield factors are established, the number of new students per year can be estimated by multiplying the yield factor by the number of projected new housing units. This method is effective when the rate of kindergarten enrollment far exceeds the live birth counts.

If housing demolitions are occurring in a district, these must also be taken into account. For instance, if housing demolitions/withdrawals have increased rapidly over recent years while new housing starts have remained relatively constant over many years, the conclusion may be that some of the new housing starts will simply be replacements for the families displaced by the demolitions. Of course, housing value and household composition would need to be further analyzed to confirm that this is indeed the case. It is possible that enrollment may remain flat or decline even though there is new housing occurring in the area.

Lakota Local School District

Land-Saturation Analysis

Housing data also drives the land-saturation analysis enrollment methodology. In areas where there is a high rate of development and the future development patterns in the area are clear, a “build-out” scenario can be developed. The scenario takes into consideration the remaining acreage to be developed, planned rate of completion, zoning policies, density per acre, type of housing, and ratios of school-age children per household type. This method is particularly useful in areas experiencing rapid growth.



Geographic Information Systems

While not a methodology, the need for better tools and easier manipulation of data has led to a new industry standard in planning – GIS [Geographic Information Systems]. GIS technology allows school districts to quickly analyze countless data sets including birth data, housing information, and enrollment statistics.

When paired with enrollment projections, GIS becomes an invaluable information-management and decision-making tool. Often, county or city offices are already implementing GIS technology and data can be shared and expanded among these organizations in the district. GIS tables and maps are included within this report illustrating population, age, and income estimates and projections.

The cohort survival was the primary method used in the development of the enrollment projections for the Lakota Local School District.

Lakota Local School District

HISTORICAL ENROLLMENT

Over the past ten years, student enrollment in the Lakota Local School District has decreased by 1,161 students in grades Pre-K – 12, including ungraded and full-time JVS students. Total enrollment for the 2019-20 school year is 17,254 students.

The approximate percentages of mainstreamed special education students [Pre-K – 12] for the current school year are as follows:

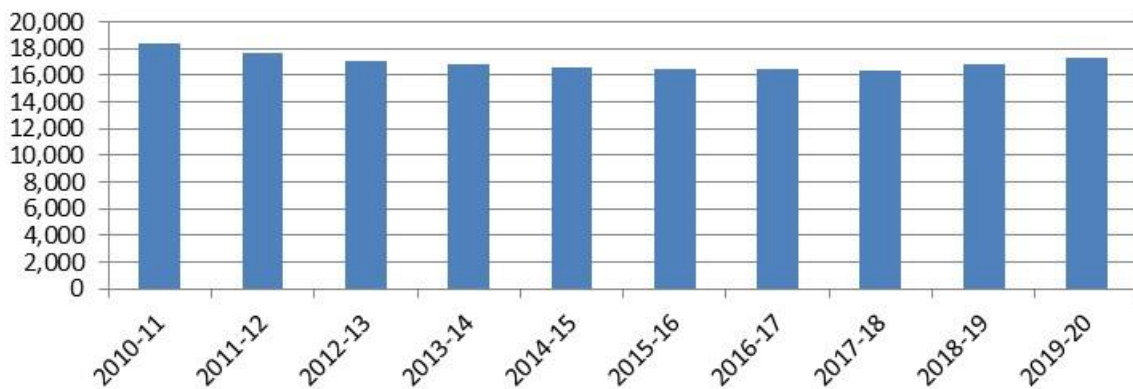
- Pre-K-12 – 7%

The approximate percentages of self-contained special education students [Pre-K – 12] for the current school year are as follows:

- Pre-K-12 – 1%

The following graph illustrates the District’s Pre-K – 12 enrollment history from 2010-11 through 2019-20.

**Lakota Local School District
Historical Enrollment**



Lakota Local School District

The following tables illustrate the District's enrollment history from 2010-11 through 2019-20.

**Lakota Local School District
Historical Enrollment**

Grade	2010-11	2011-12	2012-13	2013-14	2014-15	2015-16	2016-17	2017-18	2018-19	2019-20
Pre-K (regular)*	184	156	80	111	93	91	159	150	145	152
Pre-K (special needs)	152	123	123	108	140	139	139	143	129	156
K	1,254	1,121	1,095	996	1,048	964	938	1,072	1,291	1,239
1	1,366	1,259	1,192	1,225	1,135	1,169	1,056	1,072	1,204	1,356
2	1,373	1,376	1,274	1,174	1,234	1,133	1,190	1,081	1,115	1,235
3	1,440	1,335	1,316	1,276	1,188	1,283	1,149	1,214	1,160	1,152
4	1,433	1,391	1,293	1,322	1,266	1,206	1,300	1,164	1,238	1,173
5	1,402	1,400	1,365	1,279	1,299	1,306	1,211	1,322	1,195	1,285
6	1,479	1,358	1,413	1,353	1,296	1,320	1,338	1,233	1,344	1,264
7	1,432	1,436	1,309	1,409	1,353	1,287	1,321	1,316	1,279	1,388
8	1,344	1,401	1,422	1,303	1,402	1,345	1,305	1,336	1,339	1,319
9	1,367	1,248	1,287	1,370	1,238	1,364	1,319	1,261	1,343	1,304
10	1,435	1,326	1,193	1,282	1,325	1,210	1,370	1,320	1,300	1,413
11	1,371	1,342	1,272	1,182	1,192	1,224	1,140	1,284	1,199	1,300
12	1,192	1,205	1,212	1,157	1,051	1,101	1,153	1,102	1,244	1,273
Pre-K - 12 Total	18,224	17,477	16,846	16,547	16,260	16,142	16,088	16,070	16,525	17,009
Ungraded	54	47	47	50	44	42	35	51	51	52
JVS Full-Time	137	164	175	190	266	345	351	245	210	193
Grand Total	18,415	17,688	17,068	16,787	16,570	16,529	16,474	16,366	16,786	17,254

Source: Ohio Department of Education, EMIS; Lakota Local School District

**Lakota Local School District
Historical Enrollment by Grade Group**

Grade	2010-11	2011-12	2012-13	2013-14	2014-15	2015-16	2016-17	2017-18	2018-19	2019-20
Pre-K (special needs)	152	123	123	108	140	139	139	143	129	156
K - 5	8,268	7,882	7,535	7,272	7,170	7,061	6,844	6,925	7,203	7,440
6 - 8	4,255	4,195	4,144	4,065	4,051	3,952	3,964	3,885	3,962	3,971
9 - 12	5,365	5,121	4,964	4,991	4,806	4,899	4,982	4,967	5,086	5,290
Pre-K - 12 Total	18,040	17,321	16,766	16,436	16,167	16,051	15,929	15,920	16,380	16,857
Ungraded	54	47	47	50	44	42	35	51	51	52
Grand Total	18,094	17,368	16,813	16,486	16,211	16,093	15,964	15,971	16,431	16,909

Source: Ohio Department of Education, EMIS; Lakota Local School District

*regular Pre-K and full-time JVS enrollment are not included in grade group table above or in the projected enrollment figures.

Lakota Local School District

COMMUNITY SCHOOL ENROLLMENT

In Ohio, community school enrollment has increased dramatically over the last decade. From 2008-09 to 2017-18, enrollment has increased by approximately 18% from 88,536 students in 327 community schools to 104,380 students in 340 community schools. However, there has been a decrease of 14% in both enrollment and number of schools since the 2013-14 school year.

Ohio

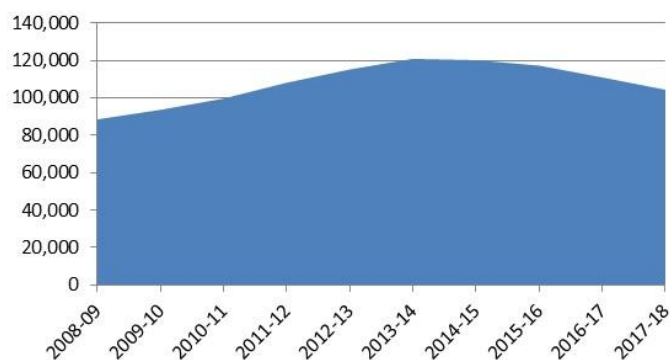
Community School Enrollment (Pre-K - 12)

Grade	2008-09	2009-10	2010-11	2011-12	2012-13	2013-14	2014-15	2015-16	2016-17	2017-18
Grand Total	88,536	93,623	99,658	108,124	115,225	120,893	120,200	117,282	110,961	104,380

Source: Ohio Department of Education, Ohio Community Schools Annual Report 2017-18

FTE students

Ohio Community School Enrollment



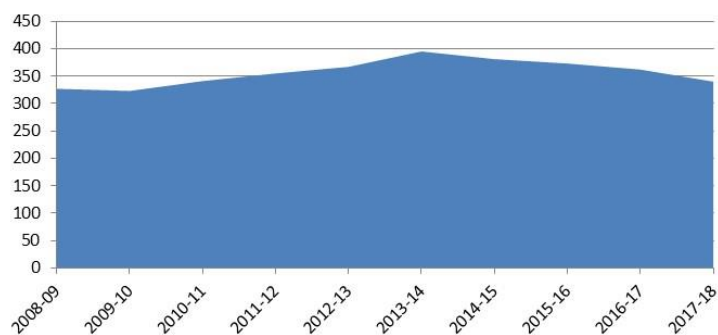
Ohio

Number of Community Schools

Grade	2008-09	2009-10	2010-11	2011-12	2012-13	2013-14	2014-15	2015-16	2016-17	2017-18
Grand Total	327	323	341	355	367	395	381	373	362	340

Source: Ohio Department of Education, Ohio Community Schools Annual Report 2017-18

Number of Community Schools in Ohio



Lakota Local School District

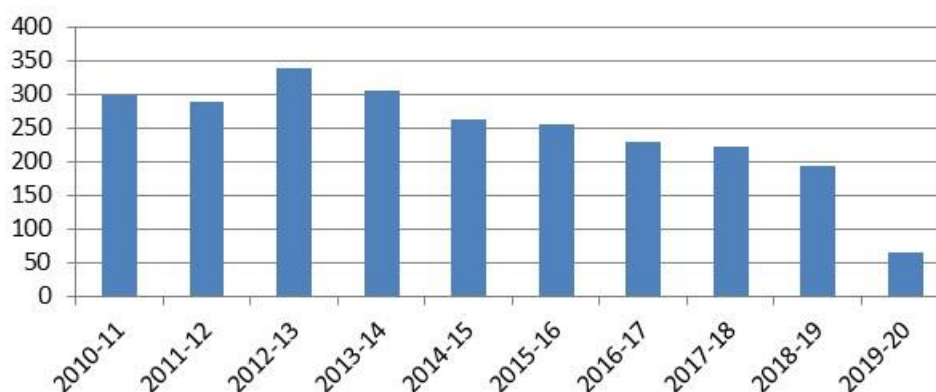
Since 2010-11, the number of Lakota Local School District students attending community schools has decreased from 297 to 64 students with some fluctuation. Enrollment of Lakota Local School District students attending community schools should be closely monitored as it may have a significant impact on District enrollment in the future.

**Lakota Local School District
Community School Enrollment**

Grade	2010-11	2011-12	2012-13	2013-14	2014-15	2015-16	2016-17	2017-18	2018-19	2019-20
Pre-K	0	0	0	0	0	0	0	0	0	0
K	12	13	13	15	12	3	5	8	8	1
1	12	14	18	12	12	10	7	3	6	2
2	15	10	18	15	9	9	5	5	4	1
3	14	19	17	20	11	11	7	7	7	2
4	14	11	19	9	14	7	11	6	9	4
5	27	24	13	17	12	13	7	15	7	2
6	17	28	29	22	12	11	15	10	10	3
7	16	21	22	24	15	11	13	17	11	6
8	18	21	30	25	19	27	16	20	11	5
9	37	32	38	38	31	36	29	24	31	18
10	45	35	35	34	37	35	31	37	22	12
11	24	36	51	35	40	46	31	30	36	6
12	31	25	35	39	39	36	52	41	31	2
Ungraded	15	0	0	0	0	0	0	0	0	0
Grand Total	297	289	338	305	263	255	229	223	193	64

Source: Ohio Department of Education, EMIS; Lakota Local School District

**Lakota Local School District
Students Attending Community Schools**



Lakota Local School District

OPEN ENROLLMENT

Since 2010-11, the number of Lakota Local School District students “open enrolling” into the District has increased from 0 to 326 students with some fluctuation. The number of students “open enrolling” out of the District has increased from 27 to 250 students with some fluctuation. Significant changes in the number of students “open enrolling” into or out of the District from year to year can impact enrollment projections and should be monitored.

Lakota Local School District
Open Enrollment - IN

Grade	2010-11	2011-12	2012-13	2013-14	2014-15	2015-16	2016-17	2017-18	2018-19	2019-20
Pre-K	0	0	0	0	0	0	1	1	0	0
K	0	13	10	13	13	7	19	16	10	12
1	0	8	7	14	19	10	17	19	21	7
2	0	8	2	7	9	16	22	31	22	16
3	0	5	3	8	12	16	25	35	28	16
4	0	6	4	8	12	19	32	27	25	23
5	0	2	0	8	6	14	27	44	29	24
6	0	6	4	9	13	10	24	27	51	19
7	0	4	2	8	11	10	18	30	37	29
8	0	2	3	6	11	17	16	29	35	38
9	0	29	5	8	10	13	33	15	38	30
10	0	13	0	11	8	15	22	45	36	37
11	0	9	5	11	16	11	33	33	50	32
12	0	9	0	7	19	25	28	45	40	43
Ungraded	0	0	0	0	0	0	0	0	0	0
Grand Total	0	114	45	118	159	183	317	397	422	326

Source: Ohio Department of Education, EMIS; Lakota Local School District

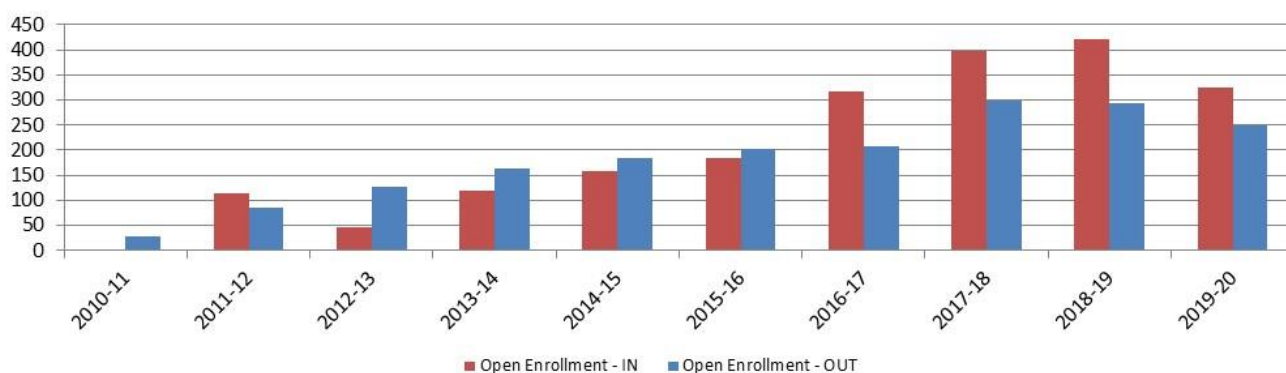
Lakota Local School District

Lakota Local School District Open Enrollment - OUT

Grade	2010-11	2011-12	2012-13	2013-14	2014-15	2015-16	2016-17	2017-18	2018-19	2019-20
Pre-K	0	0	2	0	0	0	0	0	0	1
K	8	15	19	13	19	17	22	18	12	9
1	2	13	12	17	6	20	17	30	18	15
2	2	8	12	11	17	8	25	23	24	16
3	1	5	12	15	11	16	8	27	26	17
4	0	7	9	10	15	12	16	12	22	19
5	0	3	8	10	10	12	9	20	14	15
6	1	7	8	9	13	11	14	19	19	8
7	1	5	10	11	10	13	8	21	22	27
8	2	3	8	19	11	8	15	15	26	20
9	2	4	5	20	25	13	9	22	20	24
10	2	6	6	11	21	27	16	19	26	24
11	2	4	8	9	17	20	28	28	27	26
12	4	5	8	8	10	25	21	44	37	29
Ungraded	0	0	0	0	0	0	0	0	1	0
Grand Total	27	85	127	163	185	202	208	298	294	250

Source: Ohio Department of Education, EMIS; Lakota Local School District

Lakota Local School District Open Enrollment



Lakota Local School District

LIVE BIRTH DATA

Utilization of live birth data is recommended when projecting future kindergarten enrollments as it provides a helpful overall trend. The live birth counts are used in determining a birth-to-kindergarten survival ratio. This ratio identifies the percentage of children born in a representative area who attend kindergarten in the District five years later. The survival ratios for birth-to-kindergarten as well as grades 1-12 can be found later in this report.

The Ohio Department of Health [ODH] information warehouse provides information about live birth events for Ohio residents. Information about events occurring outside of Ohio to Ohio residents is included. Information about events occurring inside Ohio to non-Ohio residents is not included.

Data is arranged by the residence of the mother. For example, if a mother lives in Powell, Delaware County but delivers her baby in Columbus, Franklin County, the birth is counted in Powell, Delaware County.

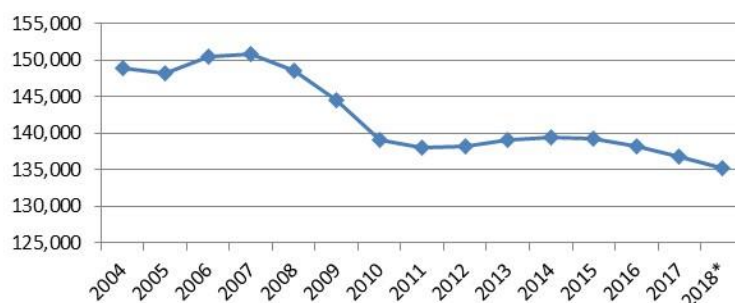
The number of live births is recorded by:

- ▶ State
- ▶ County
- ▶ City/Town
- ▶ Census Tract
- ▶ Zip Code
- ▶ Address [not available to the public]

Live birth counts are different from live birth rates. The live birth count is the actual number of live births. A birth rate is the number of births per 1,000 women in a specified population group. Birth rates are provided for counties only and for 9 age groups from 10-14 years to 45+ years.

Ohio has experienced a similar trend in live births as seen around the country. Births increased slightly in 2006 and 2007 but then declined to an all-time low of 138,024 in 2011. In 2012, 2013, and 2014, there were slight increases, but counts have declined each year since then.

Ohio Birth Counts



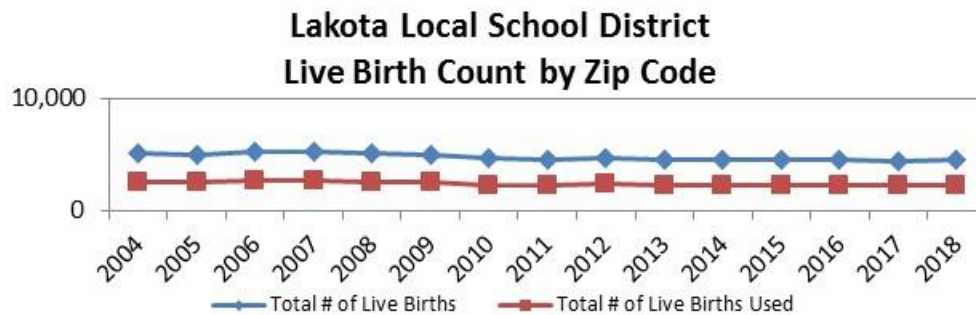
Lakota Local School District

The following table and graph include the live birth counts for zip codes 45011, 45014, 45036, 45040, 45044, 45050, 45067, 45069, 45241, and 45246. However, upon analysis of the map on page 20, only zip codes 45011, 45044, and 45069 were used for projection purposes.

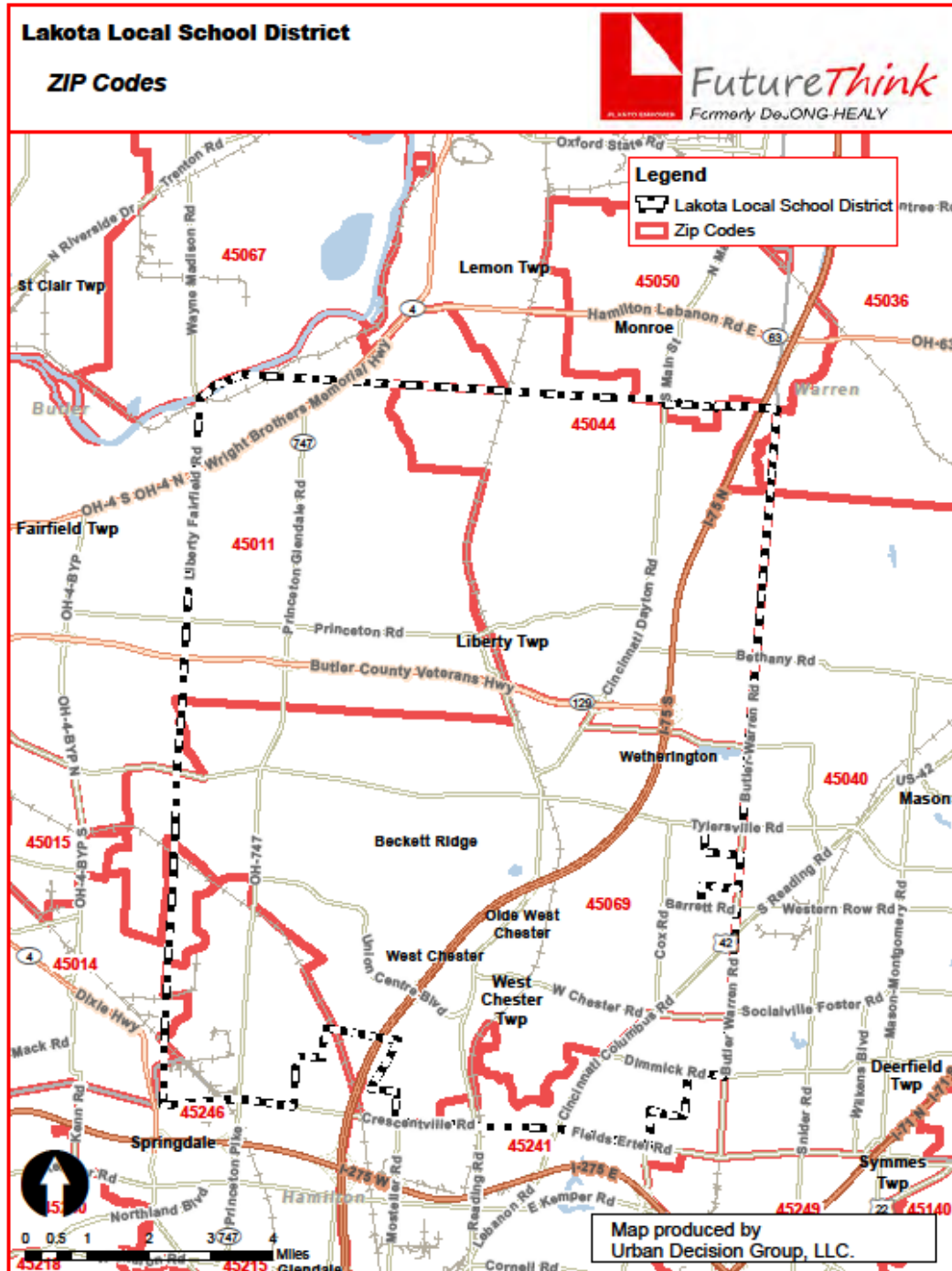
**Lakota Local School District
Live Birth Count by Zip Code
2004-2018**

Year	45011	45014	45036	45040	45044	45050	45067	45069	45241	45246	Total # of Live Births	Total # of Live Births Used
2004	1,155	595	442	763	793	111	189	574	225	220	5,067	2,522
2005	1,150	557	461	677	775	120	209	575	235	225	4,984	2,500
2006	1,119	606	447	631	905	147	222	664	258	264	5,263	2,688
2007	1,109	587	447	639	915	129	211	663	234	254	5,188	2,687
2008	1,090	624	419	565	908	136	212	582	261	249	5,046	2,580
2009	1,028	606	428	557	854	141	200	648	257	247	4,966	2,530
2010	912	557	414	502	810	123	192	578	276	252	4,616	2,300
2011	925	532	431	500	782	150	204	566	257	250	4,597	2,273
2012	964	574	410	468	779	161	164	603	259	244	4,626	2,346
2013	890	566	397	487	800	145	176	588	265	259	4,573	2,278
2014	903	580	399	477	683	168	175	638	262	232	4,517	2,224
2015	884	596	358	489	748	155	192	620	263	266	4,571	2,252
2016	920	564	386	480	737	146	198	601	262	242	4,536	2,258
2017	901	536	353	456	763	142	202	607	278	224	4,462	2,271
2018	891	579	352	474	789	142	169	599	278	221	4,494	2,279

Source: Ohio Department of Health, Public Health Data Warehouse



Lakota Local School District



Lakota Local School District

DEMOGRAPHICS

The Lakota Local School District is comprised of Liberty and West Chester townships in Butler County. General demographic data is included in the following tables for the areas located completely or partially in the District.

General Demographic Information

	Butler County	State of Ohio
Per Capita Income	\$29,745	\$29,011
Median Household Income	\$62,188	\$52,407
Persons Below Poverty	12.9%	14.9%

Source: US Census, American Community Survey, 2017 5-Year Estimates

Total Population

	2000 Census	2010 Census
Butler County	332,807	368,130
Liberty Township	22,819	37,259
West Chester Township	54,895	60,958

Source: ODOD Policy Research & Strategic Planning Office, August 2011

Also included are block group estimates and projections provided by ESRI. ESRI uses a time series of estimates from the U.S. Census Bureau that includes the latest estimates and inter-censal estimates adjusted for error of closure. The Census Bureau's time series is consistent, but testing has revealed improved accuracy by using a variety of sources to track county population trends.

ESRI also employs a time series of building permits and housing starts plus residential deliveries. Data sources are integrated and then analyzed by Census Block Groups.

Sources of data include:

- ▶ Supplementary Surveys of the Census Bureau
- ▶ Bureau of Labor Statistics' (BLS) Local Area Unemployment Statistics
- ▶ BLS Occupational Employment Statistics
- ▶ *InfoUSA*
- ▶ U.S. Bureau of the Census' Current Population Survey
- ▶ National Planning Association Data Service

Lakota Local School District

Below is a list of definitions as they appear on the U.S. Census Bureau website, to aid in interpretation of the following tables and maps.

Household:

A household includes all the people who occupy a housing unit as their usual place of residence.

Average family size:

A measure obtained by dividing the number of members of families by the total number of families (or family householders).

Family household (Family):

A family includes a householder and one or more people living in the same household who are related to the householder by birth, marriage, or adoption. All people who are related to the householder are regarded as members of his or her family. A family household may contain people not related to the householder, but those people are not included as part of the householder's family in census tabulations. Thus, the number of family households is equal to the number of families, but family households may include more members than do families. A household can contain only one family for purposes of census tabulations. Not all households contain families since a household may comprise a group of unrelated people or one person living alone.

Householder:

The person, or one of the people, in whose name the home is owned, being bought, or rented. If there is no such person present, any household member 15 years old and over can serve as the householder for the purposes of the census. Two types of householders are distinguished: a family householder and a nonfamily householder. A family householder is a householder living with one or more people related to him or her by birth, marriage, or adoption. The householder and all people in the household related to him are family members. A nonfamily householder is a householder living alone or with nonrelatives only.

Lakota Local School District

The following tables illustrate the current estimates and 5-year population projections based on block groups that comprise the state and school district, indicating areas of current and projected growth. The tables have been developed to determine selected age group projections and projections for household income, family size, and total households.

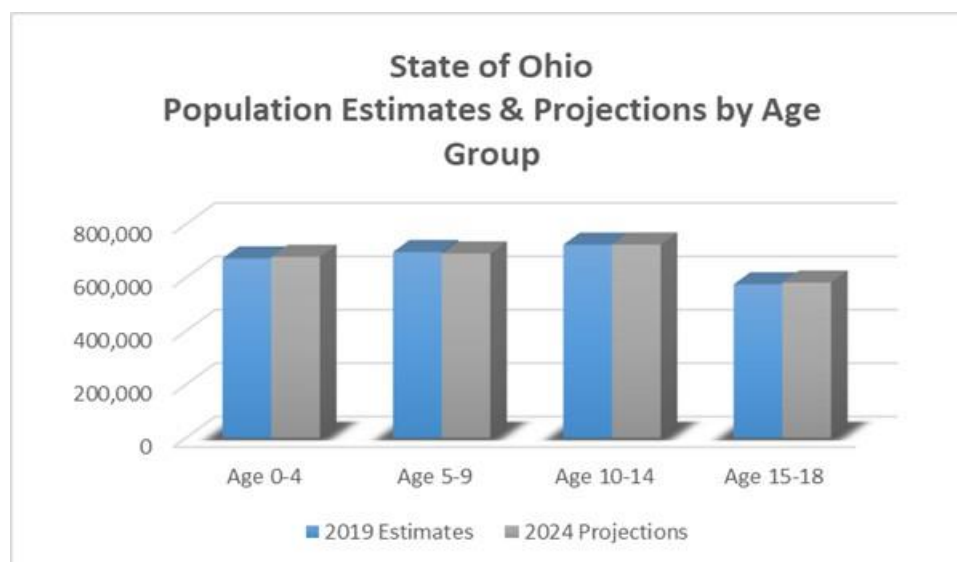
The total population in the State of Ohio is 11,805,053. This population is projected to increase by 150,819 people, or approximately 1% over a 5-year period.

The 0-18 year-old population in the State currently totals 2,665,500. This population is projected to increase by 6,714 children, or less than 1 percent.

The median age is projected to increase by 2% from 40.1 to 40.9 years of age.

State of Ohio	2019 Estimates	2024 Projections	Change 2019-24	Change 2019-24 (%)
Total Population	11,805,053	11,955,872	150,819	1.3%
Age 0-4	671,858	677,426	5,568	0.8%
Age 5-9	695,474	690,097	-5,377	-0.8%
Age 10-14	723,230	723,706	476	0.1%
Age 15-18	574,938	580,985	6,047	1.1%
Total Age 0-18	2,665,500	2,672,214	6,714	0.3%
Median Age	40.1	40.9	0.8	2.0%

Source: ESRI

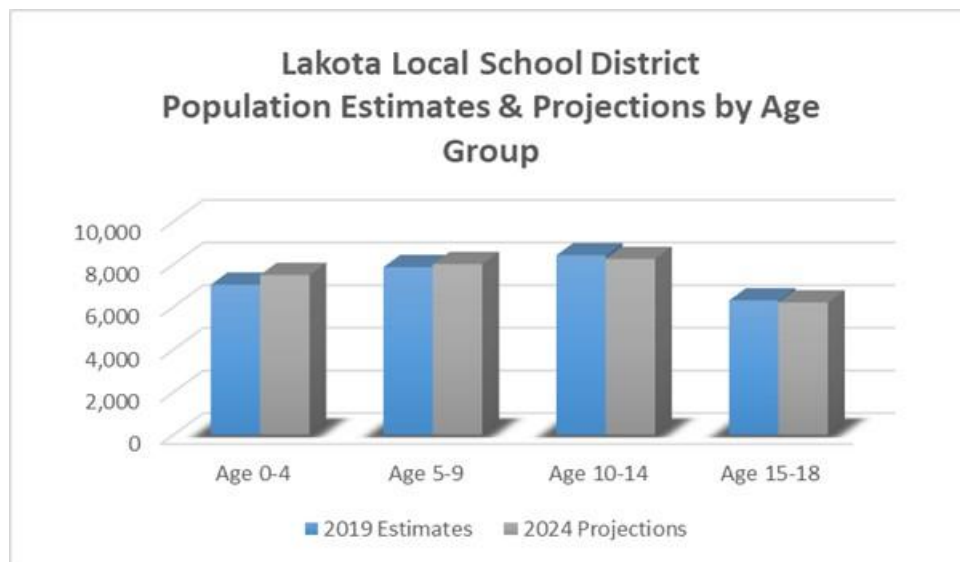


Lakota Local School District

The total population in the District is 105,242. This population is projected to increase by 5,667 people, or approximately 5% over a 5-year period. The 0-18 year-old population in the District currently totals 29,597. This population is projected to increase by 344 people, or approximately 1 percent. The median age is projected to increase by approximately 1%, from 37.7 to 38.2 years of age.

Lakota Local School District	2019 Estimates	2024 Projections	Change 2019-24	Change 2019-24 (%)
Total Population	105,242	110,909	5,667	5.4%
Age 0-4	7,032	7,492	460	6.5%
Age 5-9	7,858	8,000	142	1.8%
Age 10-14	8,413	8,244	-169	-2.0%
Age 15-18	6,294	6,205	-89	-1.4%
Total Age 0-18	29,597	29,941	344	1.2%
Median Age	37.7	38.2	0.5	1.3%

Source: ESRI



Lakota Local School District

Median and average household incomes in the State are projected to increase by approximately 12% and 14%, respectively over a 5-year period. The average family size is expected to remain the same, and the total number of family households is expected to increase slightly.

State of Ohio	2019 Estimates	2024 Projections	Change 2019-24	Change 2019-24 (%)
Median Household Income	\$54,966	\$61,801	\$6,835	12.4%
Average Household Income	\$75,519	\$85,904	\$10,385	13.8%
Average Family Size	3.02	3.02	0.00	0.0%
Total Family Households	3,013,240	3,036,269	23,029	0.8%

Source: ESRI

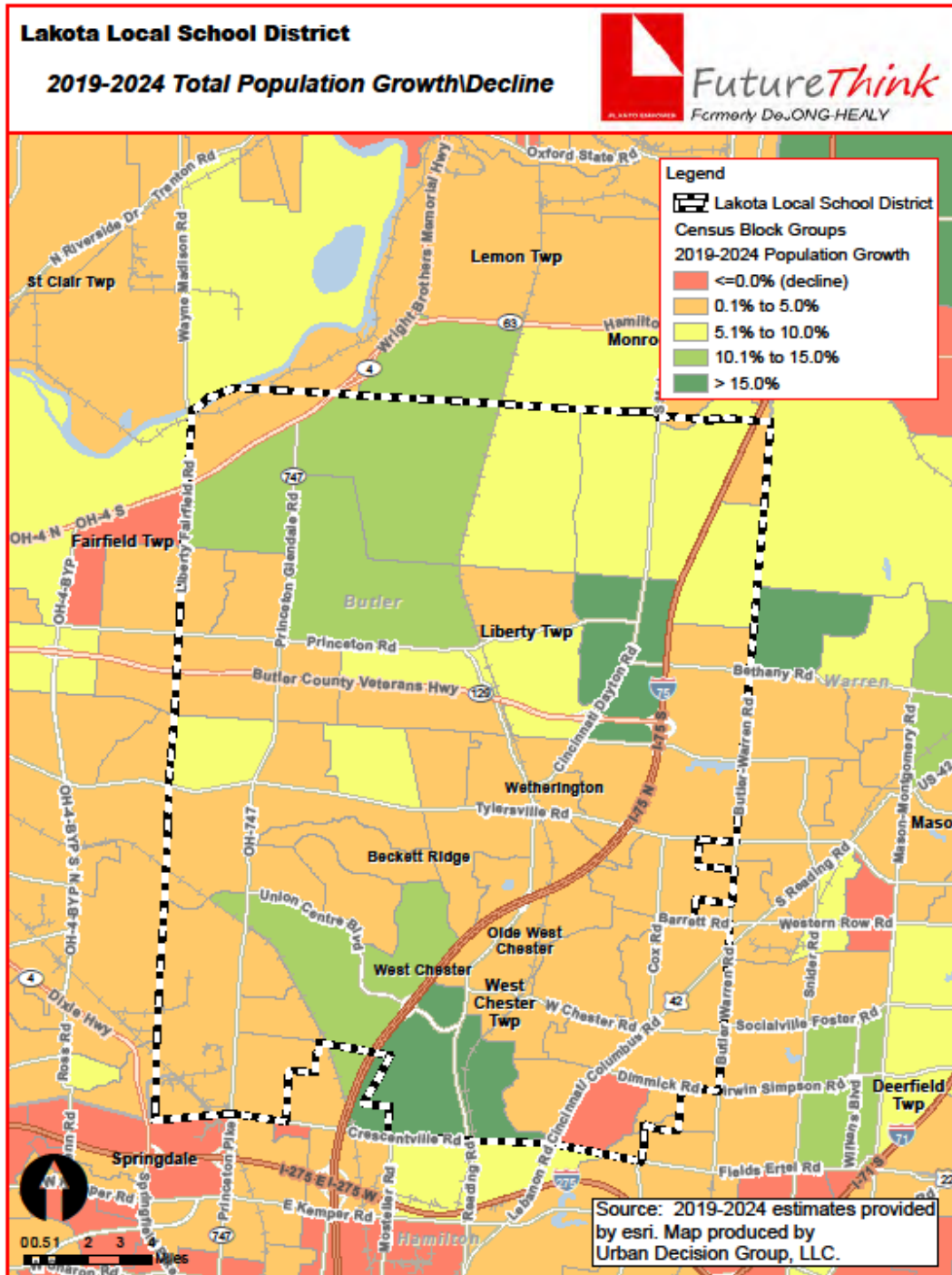
Median and average household incomes in the District are projected to increase by approximately 5% and 9%, respectively over a 5-year period. The average family size is projected to increase slightly, and the number of family households is projected to increase by approximately 5 percent.

Lakota Local School District	2019 Estimates	2024 Projections	Change 2019-24	Change 2019-24 (%)
Median Household Income	\$99,372	\$104,105	\$4,733	4.8%
Average Household Income	\$117,709	\$127,845	\$10,136	8.6%
Average Family Size	3.30	3.32	0.02	0.6%
Total Family Households	28,646	29,959	1,313	4.6%

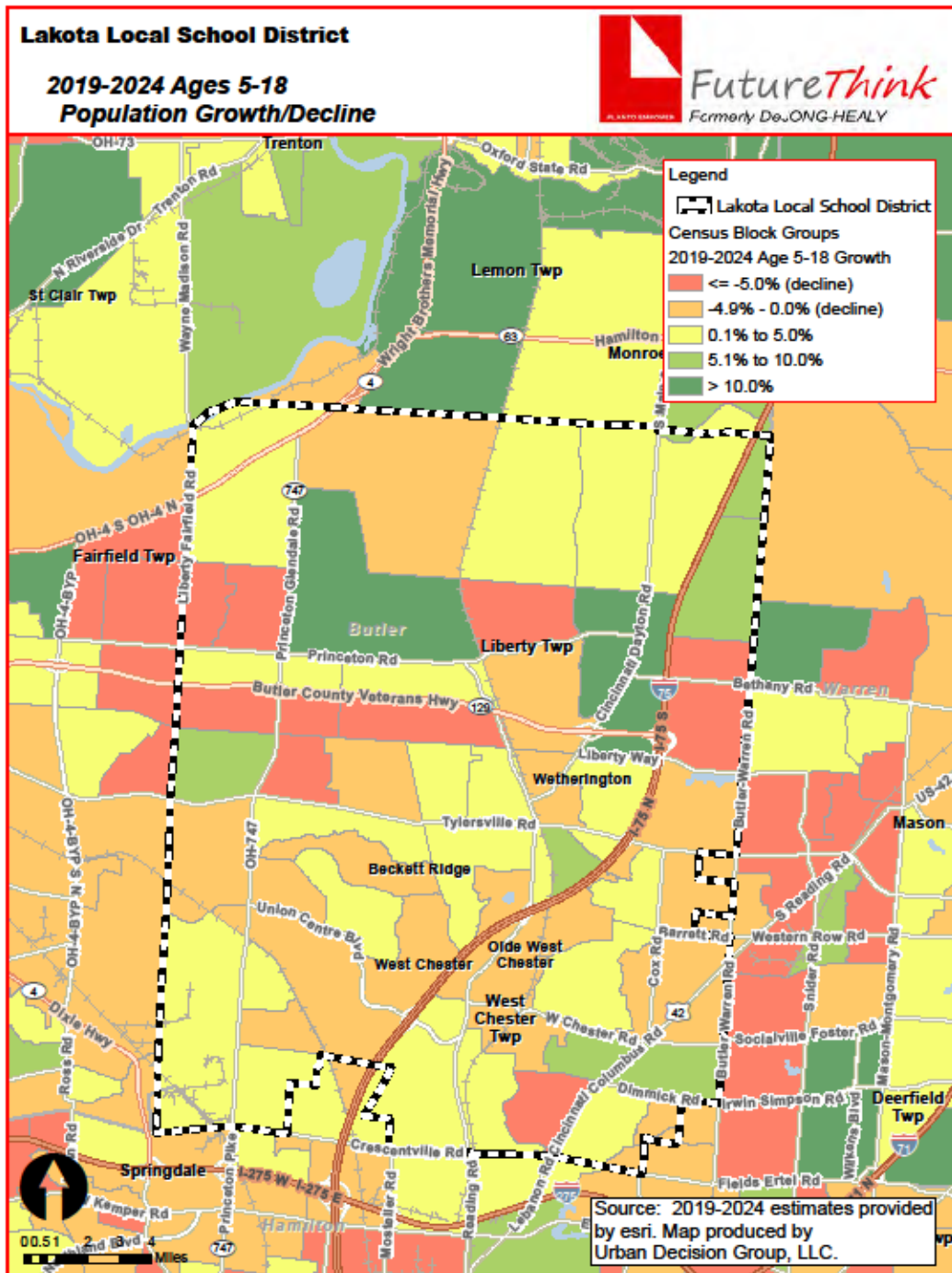
Source: ESRI

The maps on the following pages illustrate the data identified in the tables. The color coding identifies areas within the District that may be increasing or decreasing at different rates than others.

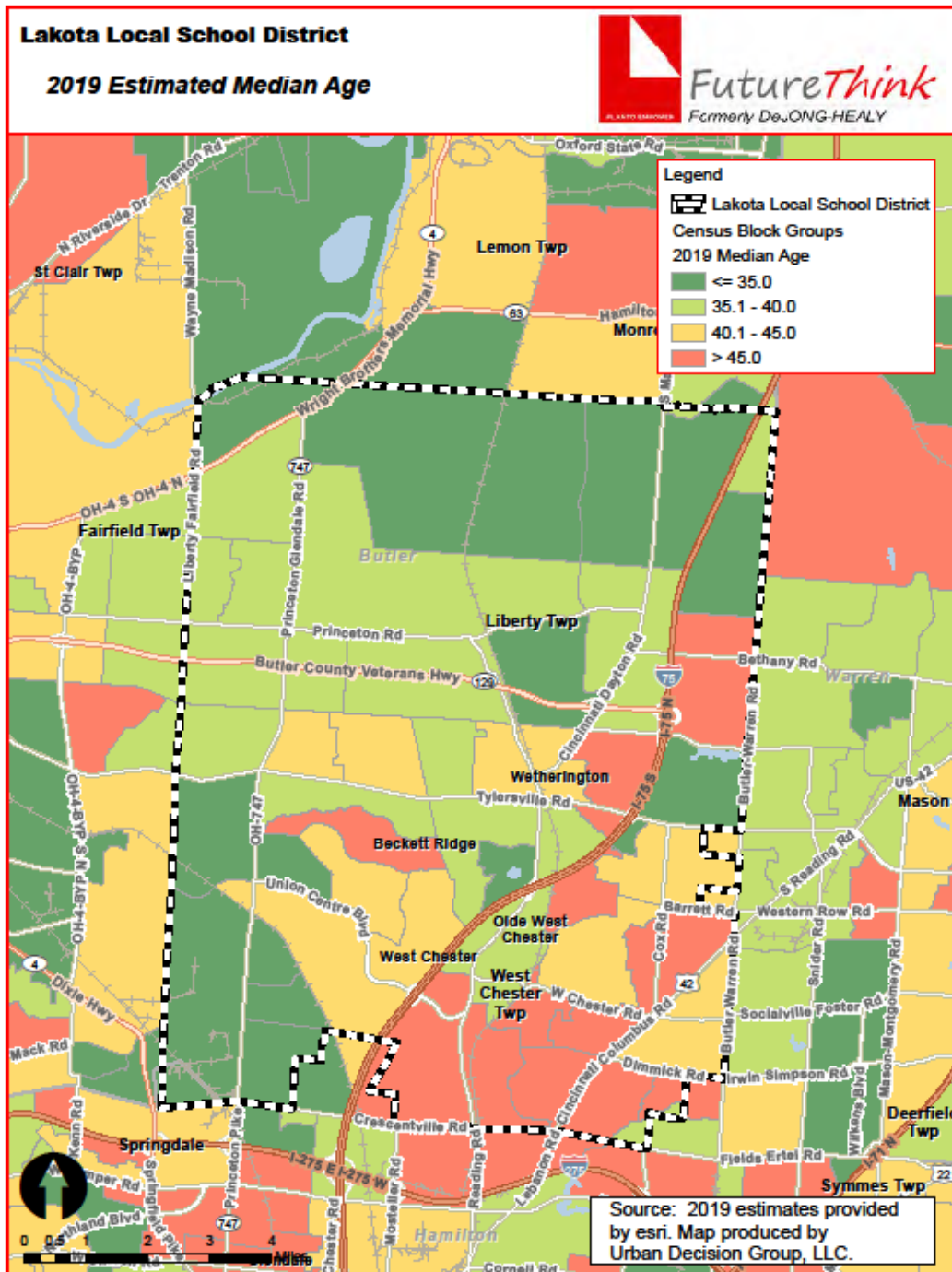
Lakota Local School District



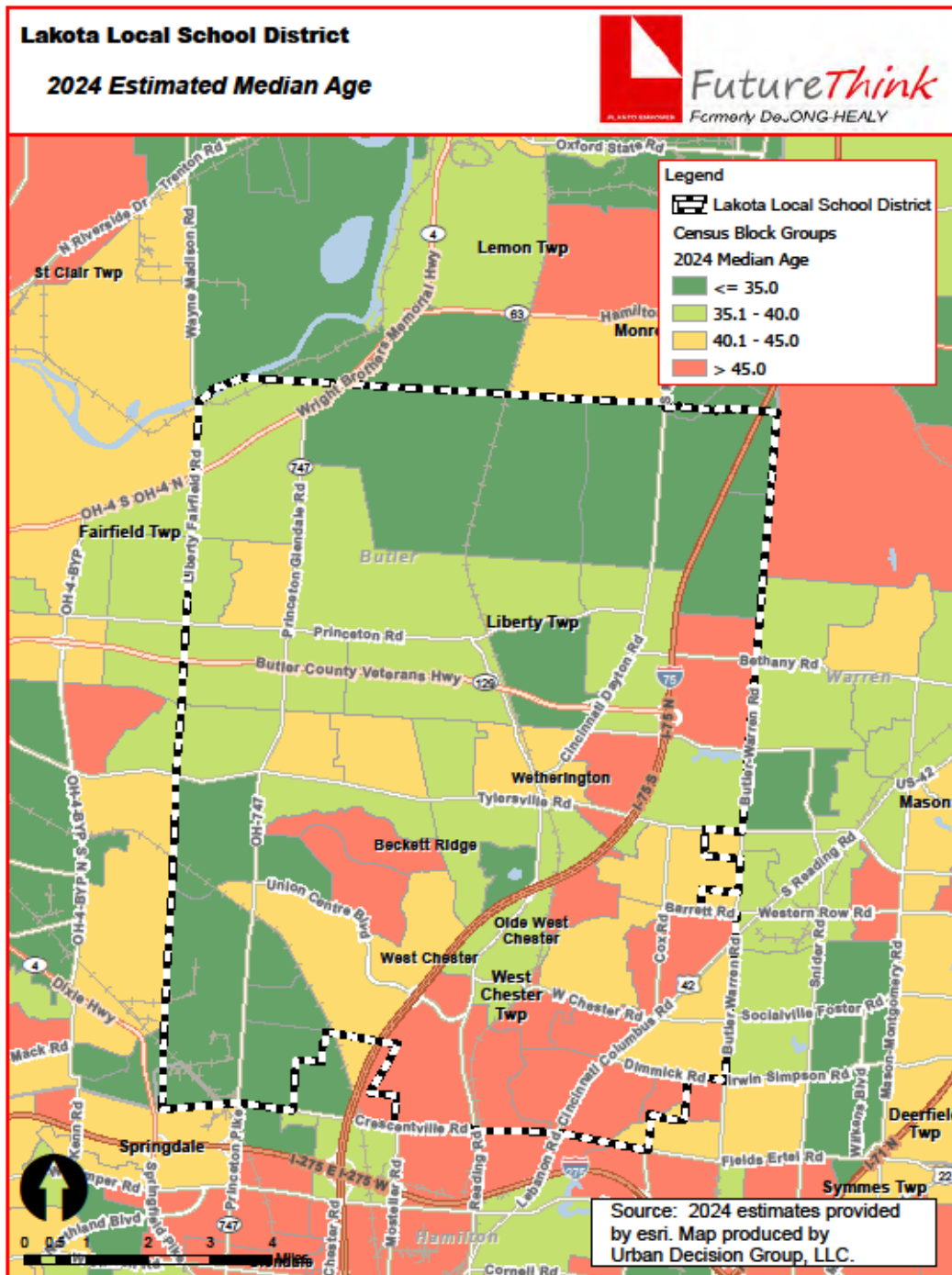
Lakota Local School District



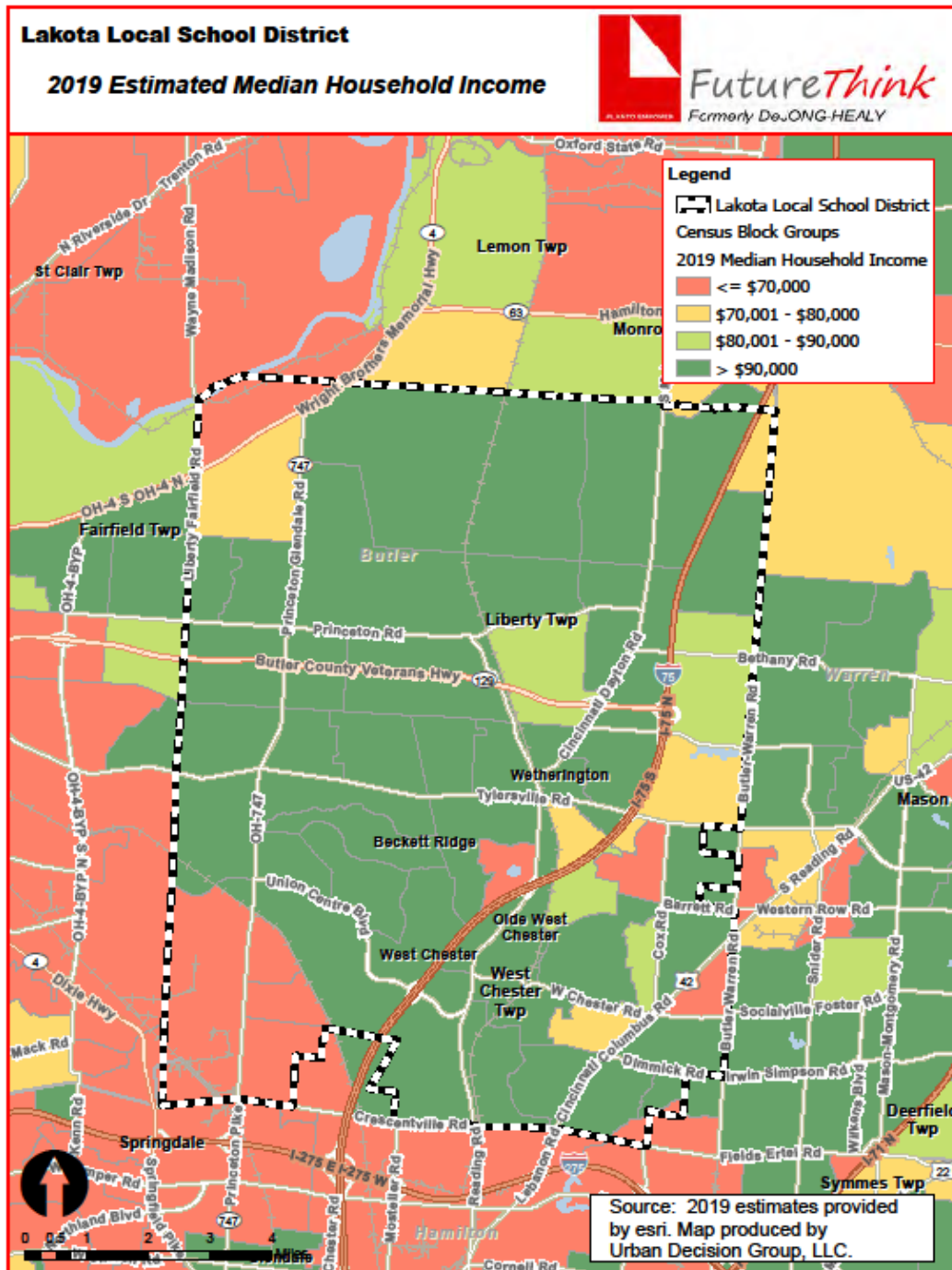
Lakota Local School District



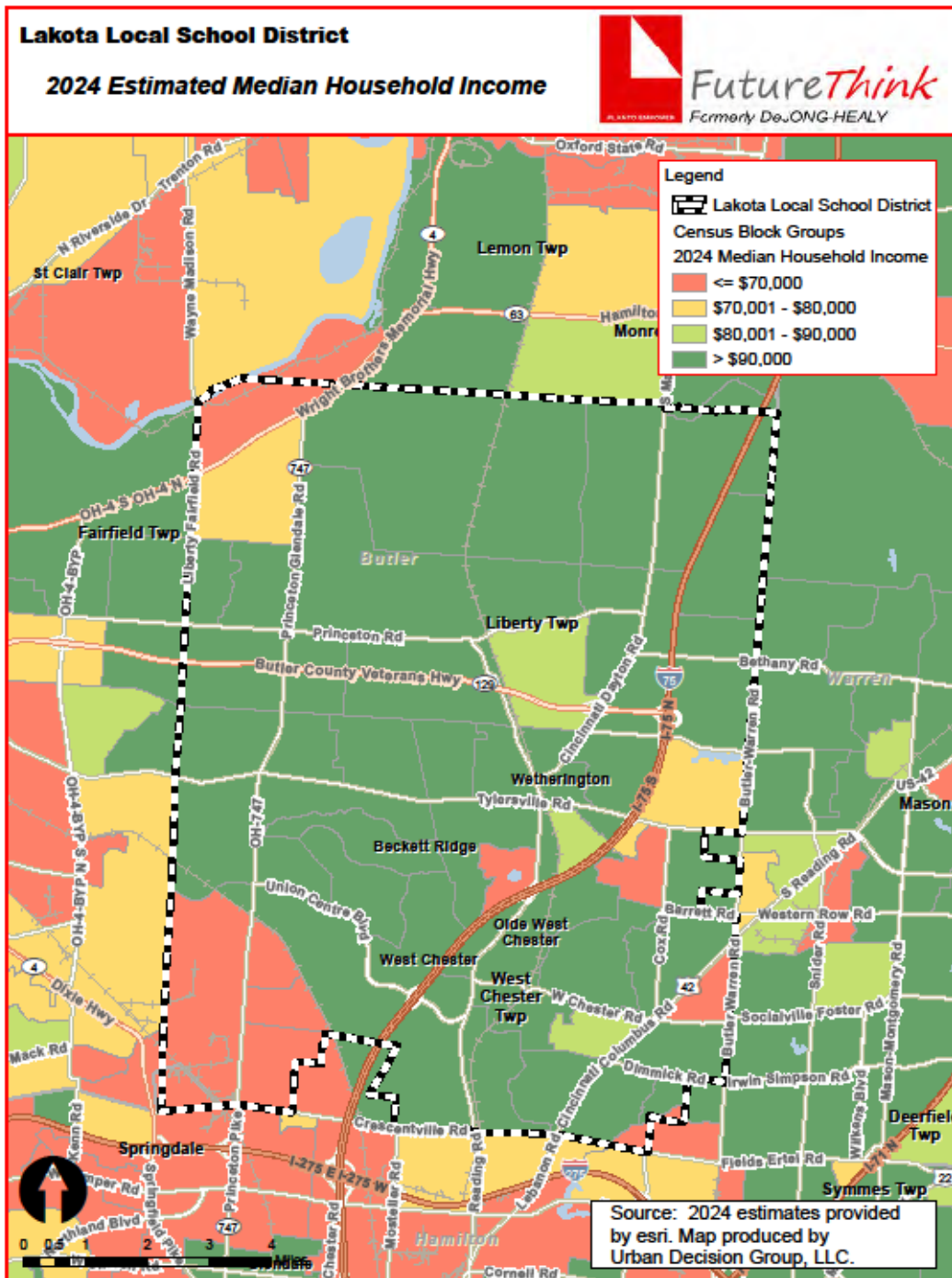
Lakota Local School District



Lakota Local School District



Lakota Local School District



HOUSING INFORMATION

The chart below illustrates the number of single-family dwelling building permits issued each year in Butler County.

of Building Permits Issued for Single Family Dwellings

Year	Butler County
2009	544
2010	440
2011	393
2012	488
2013	611
2014	583
2015	591
2016	706
2017	737
2018	694
2019*	772

Source: SOCDS Building Permits Database

*preliminary through December 2019

Lakota Local School District

SURVIVAL RATIOS

The chart below demonstrates the changes in enrollment as students move through the system. Percentages greater than 100 indicate that there are more students than there were in the previous grade the previous year. In other words, there was growth and new students entered the system. Percentages less than 100 indicate that there was decline with students leaving the system.

- ▶ Birth to Kindergarten: This ratio indicates the number of children born in the area who attend kindergarten in the District 5 years later. Percentages less than 100% result from movement out of the district, attendance at a non-public or charter school, or residence in another district within the same area.

The following table illustrates the survival ratios for the Lakota Local School District.

from	to	birth -> K	K->1	1->2	2->3	3->4	4->5	5->6	6->7	7->8	8->9	9->10	10->11	11->12
2010	2011	41.7%	100.4%	100.7%	97.2%	96.6%	97.7%	96.9%	97.1%	97.8%	92.9%	97.0%	93.5%	87.9%
2011	2012	40.8%	106.3%	101.2%	95.6%	96.9%	98.1%	100.9%	96.4%	99.0%	91.9%	95.6%	95.9%	90.3%
2012	2013	38.6%	111.9%	98.5%	100.2%	100.5%	98.9%	99.1%	99.7%	99.5%	96.3%	99.6%	99.1%	91.0%
2013	2014	41.4%	114.0%	100.7%	101.2%	99.2%	98.3%	101.3%	100.0%	99.5%	95.0%	96.7%	93.0%	88.9%
2014	2015	41.9%	111.5%	99.8%	104.0%	101.5%	103.2%	101.6%	99.3%	99.4%	97.3%	97.7%	92.4%	92.4%
2015	2016	41.3%	109.5%	101.8%	101.4%	101.3%	100.4%	102.5%	100.1%	101.4%	98.1%	100.4%	94.2%	94.2%
2016	2017	45.7%	114.3%	102.4%	102.0%	101.3%	101.7%	101.8%	98.4%	101.1%	96.6%	100.1%	93.7%	96.7%
2017	2018	56.7%	112.3%	104.0%	107.3%	102.0%	102.7%	101.7%	103.7%	101.7%	100.5%	103.1%	90.8%	96.9%
2018	2019	55.7%	105.0%	102.6%	103.3%	101.1%	103.8%	105.8%	103.3%	103.1%	97.4%	105.2%	100.0%	106.2%
	average	44.86%	109.476%	101.30%	101.4%	100.04%	100.5%	101.3%	99.8%	100.3%	96.219%	99.498%	94.739%	93.819%
	standard deviation	6.301%	4.388%	1.531%	3.295%	1.921%	2.237%	2.271%	2.331%	1.553%	2.503%	2.965%	2.880%	5.291%

Lakota Local School District

ENROLLMENT PROJECTION

Enrollment projections were developed after analyzing the data collected in this report. The projections indicate an increase of 625 students in grades Pre-K through 12, not including regular Pre-K or full-time JVS students, from the 2019-20 to the 2029-30 school year. The following tables and graph illustrate projected enrollments by grade and by grade group through the 2029-30 school year.

Preschool:

The Ohio School Design Manual [OSDM] provides space for preschool students with disabilities and a maximum of 40 ECE preschool students. The Lakota Local School District funds preschool through the following sources:

- General fund
- Tuition

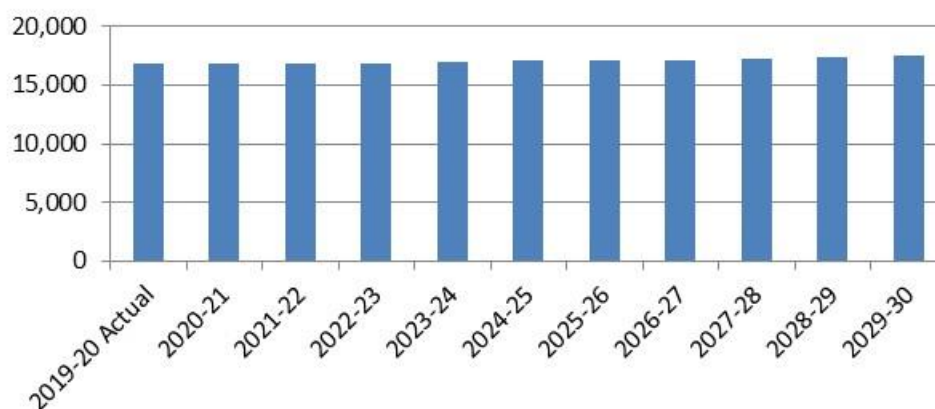
Kindergarten:

The OSDM provides space for all day, every day kindergarten.

Career Technical:

Due to the specialized space requirements, career technical students are pulled out of the 11th and 12th grade enrollments and projected separately.

**Lakota Local School District
Projected Enrollment**



Lakota Local School District

Lakota Local School District Projected Enrollment

Grade	2019-20 Actual	2020-21	2021-22	2022-23	2023-24	2024-25	2025-26	2026-27	2027-28	2028-29	2029-30
Pre-K (special needs)	156	135	135	136	136	136	136	136	136	136	136
K	1,239	1,122	1,125	1,131	1,135	1,129	1,129	1,129	1,129	1,129	1,129
1	1,356	1,367	1,238	1,241	1,248	1,253	1,245	1,245	1,245	1,245	1,245
2	1,235	1,387	1,398	1,266	1,269	1,276	1,281	1,273	1,273	1,273	1,273
3	1,152	1,260	1,415	1,426	1,291	1,294	1,302	1,307	1,299	1,299	1,299
4	1,173	1,168	1,277	1,434	1,445	1,308	1,312	1,319	1,324	1,316	1,316
5	1,285	1,199	1,193	1,305	1,465	1,477	1,337	1,340	1,348	1,353	1,345
6	1,264	1,308	1,220	1,214	1,328	1,491	1,503	1,360	1,364	1,372	1,377
7	1,388	1,282	1,327	1,237	1,231	1,347	1,512	1,524	1,379	1,383	1,391
8	1,319	1,408	1,301	1,346	1,255	1,249	1,366	1,533	1,546	1,399	1,403
9	1,304	1,288	1,374	1,269	1,313	1,225	1,219	1,333	1,496	1,508	1,365
10	1,413	1,333	1,316	1,405	1,297	1,342	1,252	1,246	1,362	1,529	1,541
11	1,300	1,326	1,250	1,234	1,317	1,216	1,259	1,174	1,168	1,278	1,434
12	1,273	1,247	1,272	1,199	1,184	1,264	1,167	1,207	1,126	1,121	1,225
Pre-K - 12 Total	16,857	16,830	16,841	16,843	16,914	17,007	17,020	17,126	17,195	17,341	17,479
Ungraded	52	53	53	53	54	54	54	54	54	55	55
Grand Total	16,909	16,883	16,894	16,896	16,968	17,061	17,074	17,180	17,249	17,396	17,534

Source: FutureThink

Lakota Local School District Projected Enrollment by Grade Group

Grade	2019-20 Actual	2020-21	2021-22	2022-23	2023-24	2024-25	2025-26	2026-27	2027-28	2028-29	2029-30
Pre-K (special needs)	156	135	135	136	136	136	136	136	136	136	136
K - 5	7,440	7,503	7,646	7,803	7,853	7,737	7,606	7,613	7,618	7,615	7,607
6 - 8	3,971	3,998	3,848	3,797	3,814	4,087	4,381	4,417	4,289	4,154	4,171
9 - 12	5,290	5,194	5,212	5,107	5,111	5,047	4,897	4,960	5,152	5,436	5,565
Pre-K - 12 Total	16,857	16,830	16,841	16,843	16,914	17,007	17,020	17,126	17,195	17,341	17,479
Ungraded	52	53	53	53	54	54	54	54	54	55	55
Grand Total	16,909	16,883	16,894	16,896	16,968	17,061	17,074	17,180	17,249	17,396	17,534

Source: FutureThink

CONCLUSION

As with any projection, the District should pay close attention to live birth counts, enrollment in elementary schools, community school enrollment, open enrollment, and any housing growth. Each of these factors will have an impact on future student enrollment.

FutureThink is pleased to have had the opportunity to provide the District with enrollment projection services. We hope this document will provide the necessary information to make informed decisions about the future of the Lakota Local School District.

APPENDIX

The following documents are included in the appendix:

- District Acceptance
- District Questionnaire

The April 2009 Enrollment Projection Report is available upon request.



Tracy Healy <thealy@futurethinkinc.com>

Lakota LSD (Butler): Enrollment Projection

Chris Passarge <chris.passarge@lakotaonline.com>

Tue, Aug 25, 2020 at 2:37 PM

To: Tracy Healy <thealy@futurethinkinc.com>, "Joseph.Macneil@ofcc.ohio.gov" <Joseph.Macneil@ofcc.ohio.gov>

Cc: Matt Miller <matt.miller@lakotaonline.com>

Tracy,

The facilities team reviewed the enrollment forecast and on behalf of the team and superintendent, accept the results.

Regards,

Chris

Christopher T. Passarge

Chief Operations Officer

Lakota Local School District

5572 Princeton Road

Liberty Township, OH 45011

(513) 874-5505



[Quoted text hidden]

[Quoted text hidden]

District Questionnaire for Lakota Local SD of Butler County (46110) [Thealy]

District Questionnaire has been submitted for review

Enrollment Report For Lakota Local SD of Butler County (46110)

Contact Information

Superintendent Name: Matthew Miller
 Superintendent Email: matt.miller@lakotaonline.com
 Superintendent Phone: (513) 874-5505
 Contact Name (if different from Superintendent): Chris Passarge
 Contact Title: Chief Operations Officer
 Contact Email: chris.passarge@lakotaonline.com
 Contact Phone: (513) 874-5505

K12 Enrollment

Grade	Enrolled 2010–2011	Enrolled 2011–2012	Enrolled 2012–2013	Enrolled 2013–2014	Enrolled 2014–2015	Enrolled 2015–2016	Enrolled 2016–2017	Enrolled 2017–2018	Enrolled 2018–2019	Enrolled 2019–2020
K	1254	1121	1095	996	1048	964	938	1072	1291	1239
1	1366	1259	1192	1225	1135	1169	1056	1072	1204	1356
2	1373	1376	1274	1174	1234	1133	1190	1081	1115	1235
3	1440	1335	1316	1276	1188	1283	1149	1214	1160	1152
4	1433	1391	1293	1322	1266	1206	1300	1164	1238	1173
5	1402	1400	1365	1279	1299	1306	1211	1322	1195	1285
6	1479	1358	1413	1353	1296	1320	1338	1233	1344	1264
7	1432	1436	1309	1409	1353	1287	1321	1316	1279	1388
8	1344	1401	1422	1303	1402	1345	1305	1336	1339	1319
9	1367	1248	1287	1370	1238	1364	1319	1261	1343	1304
10	1435	1326	1193	1282	1325	1210	1370	1320	1300	1413
11	1436	1433	1359	1263	1192	1224	1140	1284	1199	1300
12	1264	1278	1300	1266	1051	1101	1153	1102	1244	1273
Ungraded	54	47	47	50	44	42	35	51	51	52
Total	18079	17409	16865	16568	16071	15954	15825	15828	16302	16753

All Day Kindergarten

Do you offer kindergarten to all students, all day, every day?
yes

Preschool Enrollment

Do you **house** Preschool/Pre-K students in your facilities, **including** Pre-K students in a program run by an ESC or other agency?
yes

Please select your district's preschool funding sources:
General Fund Tuition

Early Childhood Education (ECE) grant funding (known as entitlement and public preschool) is distributed by the Ohio Department of Education to districts to provide preschool services for 3- and 4-year old children of income eligible families.

Do you house Early Childhood Education (ECE) students in your facilities?
no

Do you house Pre-K students with disabilities in your facilities?
yes

Please provide enrollment data:

Grade	2010–2011	2011–2012	2012–2013	2013–2014	2014–2015	2015–2016	2016–2017	2017–2018	2018–2019	2019–2020
Pre-K with disabilities	152	123	123	108	140	139	139	143	129	156

Do you house other Pre-K students in your facilities that are not students with disabilities and are not enrolled in ECE, or Federal Head Start (e.g., tuition-based or funded with other sources)?

yes

Please provide enrollment data:

Grade	2010–2011	2011–2012	2012–2013	2013–2014	2014–2015	2015–2016	2016–2017	2017–2018	2018–2019	2019–2020
Pre-K Other (not disabled, not enrolled in ECE, or Federal Head Start)	184	156	80	111	93	91	159	150	145	152

Student Teacher Ratios

What are your district's current average student to teacher ratios for the following grade groups?

Include core teachers only.

- K–3 24 to 1
- 4–5 26 to 1
- 6–8 28 to 1
- 9–12 28 to 1

Grade Configurations

PK through PK
 K through 5
 6 through 8
 9 through 12

Students with Disabilities

Definitions:

- **IE13** — Special Education outside the regular class less than 21% of the day.
- **IE14** — Special Education outside the regular class at least 21% of the day and no more than 60% of the day.
- **IE15** — Special Education outside the regular class more than 60% of the day.

Please provide enrollment for students with disabilities by ODE program code and grade configuration.

Code	PK-PK	K-5	6-8	9-12
IE13	967	0	0	0
IE14	290	0	0	0
IE15	196	0	0	0
Total	1453	0	0	0

*These students should be included in the October headcount

Does your District house additional students with disabilities from other school districts? (i.e., county programs, etc.) no

Community Enrollment

Grade	Enrolled 2010– 2011	Enrolled 2011– 2012	Enrolled 2012– 2013	Enrolled 2013– 2014	Enrolled 2014– 2015	Enrolled 2015– 2016	Enrolled 2016– 2017	Enrolled 2017– 2018	Enrolled 2018– 2019	Enrolled 2019– 2020
PreK	0	0	0	0	0	0	0	0	0	0
K	12	13	13	15	12	3	5	8	8	1
1	12	14	18	12	12	10	7	3	6	2
2	15	10	18	15	9	9	5	5	4	1
3	14	19	17	20	11	11	7	7	7	2
4	14	11	19	9	14	7	11	6	9	4
5	27	24	13	17	12	13	7	15	7	2
6	17	28	29	22	12	11	15	10	10	3
7	16	21	22	24	15	11	13	17	11	6
8	18	21	30	25	19	27	16	20	11	5
9	37	32	38	38	31	36	29	24	31	18
10	45	35	35	34	37	35	31	37	22	12
11	24	36	51	35	40	46	31	30	36	6
12	31	25	35	39	39	36	52	41	31	2
Ungraded	15	0	0	0	0	0	0	0	0	0
Total	297	289	338	305	263	255	229	223	193	64

Open Enrollment (In)

Grade	Enrolled 2010– 2011	Enrolled 2011– 2012	Enrolled 2012– 2013	Enrolled 2013– 2014	Enrolled 2014– 2015	Enrolled 2015– 2016	Enrolled 2016– 2017	Enrolled 2017– 2018	Enrolled 2018– 2019	Enrolled 2019– 2020
Prek	0	0	0	0	0	0	1	1	0	0
K	0	13	10	13	13	7	19	16	10	12
1	0	8	7	14	19	10	17	19	21	7

2	0	8	2	7	9	16	22	31	22	16
3	0	5	3	8	12	16	25	35	28	16
4	0	6	4	8	12	19	32	27	25	23
5	0	2	0	8	6	14	27	44	29	24
6	0	6	4	9	13	10	24	27	51	19
7	0	4	2	8	11	10	18	30	37	29
8	0	2	3	6	11	17	16	29	35	38
9	0	29	5	8	10	13	33	15	38	30
10	0	13	0	11	8	15	22	45	36	37
11	0	9	5	11	16	11	33	33	50	32
12	0	9	0	7	19	25	28	45	40	43
Ungraded	0	0	0	0	0	0	0	0	0	0
Total	0	114	45	118	159	183	317	397	422	326

Open Enrollment (Out)

Grade	Enrolled 2010– 2011	Enrolled 2011– 2012	Enrolled 2012– 2013	Enrolled 2013– 2014	Enrolled 2014– 2015	Enrolled 2015– 2016	Enrolled 2016– 2017	Enrolled 2017– 2018	Enrolled 2018– 2019	Enrolled 2019– 2020
Prek	0	0	2	0	0	0	0	0	0	1
K	8	15	19	13	19	17	22	18	12	9
1	2	13	12	17	6	20	17	30	18	15
2	2	8	12	11	17	8	25	23	24	16
3	1	5	12	15	11	16	8	27	26	17
4	0	7	9	10	15	12	16	12	22	19
5	0	3	8	10	10	12	9	20	14	15
6	1	7	8	9	13	11	14	19	19	8
7	1	5	10	11	10	13	8	21	22	27
8	2	3	8	19	11	8	15	15	26	20
9	2	4	5	20	25	13	9	22	20	24
10	2	6	6	11	21	27	16	19	26	24
11	2	4	8	9	17	20	28	28	27	26
12	4	5	8	8	10	25	21	44	37	29
Ungraded	0	0	0	0	0	0	0	0	1	0
Total	27	85	127	163	185	202	208	298	294	250

JVS Enrollment

Does your District belong to a JVSD? yes

Please select the JVSD your District belongs to: Butler Technology & Career Development Schools

Please provide enrollment for students attending JVS (or "Other") full or half-time.

Grade	Enrolled 2010– 2011	Enrolled 2011– 2012	Enrolled 2012– 2013	Enrolled 2013– 2014	Enrolled 2014– 2015	Enrolled 2015– 2016	Enrolled 2016– 2017	Enrolled 2017– 2018	Enrolled 2018– 2019	Enrolled 2019– 2020
Full Time 11	65	91	87	81	132	160	166	138	108	114
Full Time 12	72	73	88	109	134	185	185	107	102	79
Total	137	164	175	190	266	345	351	245	210	193

Grade	Enrolled 2010– 2011	Enrolled 2011– 2012	Enrolled 2012– 2013	Enrolled 2013– 2014	Enrolled 2014– 2015	Enrolled 2015– 2016	Enrolled 2016– 2017	Enrolled 2017– 2018	Enrolled 2018– 2019	Enrolled 2019– 2020
Half Time 11	0	0	0	0	0	0	0	0	0	0
Half Time 12	0	0	0	0	0	0	0	0	0	0
Total	0	0	0	0	0	0	0	0	0	0

Career Technical Compact Enrollment

Does your District belong to a Compact? no

Career Tech Program Enrollment

Include only those students who are considered "concentrators" or enrolled in a "pathway". Do NOT include students who are just taking one course.

Comprehensive Career Tech: Students who attend academics and career technical programs in your district.

On-Site Career Tech: Students who attend academics in another district but attend career technical programs in your district.

Satellite JVSD: Same as Comprehensive Career Tech, but the program is sponsored and/or administered by the JVS District and housed by your District.

Boundaries

Please list municipalities, townships, and any additional counties within the boundaries of your school district: West Chester Township Liberty Township

Has your District experienced changes in District-wide boundaries since 2004? no

Growth

Do you expect significant growth in your District over the next 10 years? no

Additional Information

Please provide any additional information you feel may impact your District's future enrollment [i.e. private schools opening or closing]

Submission Documents

The following are additional documents which may be useful in projecting your District's enrollment. Please check any documents you intend to provide for consideration and forward documents to:

Tracy Healy (thealy@futurethinkinc.com)

or

Future Think Inc.

5685 Tynecastle Loop

Dublin, 43016

Copies of any previous enrollment projections completed outside of OSFC

Return To District Print Report

Please contact Tracy Healy (thealy@futurethinkinc.com, 614-264-2638) with any questions or concerns regarding the District Questionnaire.