

For information or questions on Buckeye Eco, please contact:
Aztec Supply Corp
708-594-6080



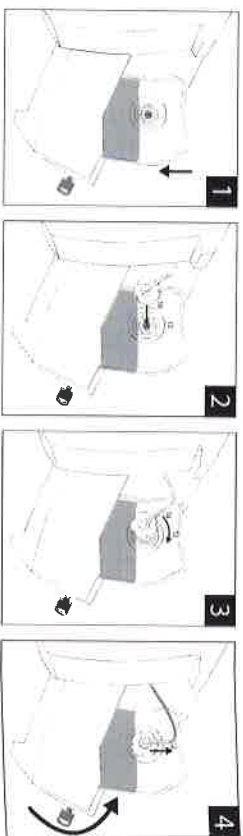
Eco Pro®

The Eco proportioning unit is a compact and convenient system that utilizes flexible packaging and proprietary technology to automatically dilute chemistry for desired cleaning.

Follow these steps for proper usage:

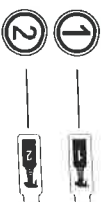
1. Use with cold water. Turn water "ON" at the faucet.
2. Select desired product by either pressing one of the green buttons (#3 or #4) for autoscrubber or mop bucket fill, or by filling a quart bottle by activating one of the low flow switches by inserting the desired 5-inch hoses (#1, #2, #5 or #6) into a quart bottle and pushing back on the switch.
3. When finished diluting the product, turn water "OFF" at the faucet.

Eco Bag Installation Instructions



Do Not Cross Connect Quick Connect Lines

For correct connection, match up panel number with Eco Cleaner line label, e.g:



E15

Hydrogen Peroxide Cleaner



For use:
 Spray & wipe inside restrooms
 Spray & wipe outside restrooms

E12

Glass Cleaner HD



For use:
 Mirrors
 Glass
 Plexiglas

E11

All-Purpose Cleaner



For use:
 Floors outside restrooms

E23

Neutral Disinfectant



For use:
 Floors inside restrooms
 Spray & wipe inside restrooms

E14

Muscle Cleaner



For use:
 White boards
 Pen ink / graffiti removal

*The product meets Green Seal® Standard GS-37 based on effective performance, concentrated volume, minimized/recycled packaging, and protective limits on VOCs and human & environmental toxicity. GreenSeal.org

**The product meets Green Seal® Standard GS-37 based on effective performance, concentrated volume, minimized/recycled packaging and protective limits on: VOCs and human & environmental toxicity. Acute toxicity and skin/eye damage met requirements at the as-used dilution, as specified for closed dilution systems. GreenSeal.org.

For information or questions on Buckeye Eco, please contact:
Aztec Supply Corp
708-594-6080



Eco Pro®

The Eco proportioning unit is a compact and convenient system that utilizes flexible packaging and proprietary technology to automatically dilute chemistry for desired cleaning.

Follow these steps for proper usage:

1. Use with cold water. Turn water "ON" at the faucet.
2. Select desired product by either pressing one of the green buttons (#3 or #4) for autoscrubber or mop bucket fill, or by filling a quart bottle by activating one of the low flow switches by inserting the desired 5-inch hoses (#1, #2, #5 or #6) into a quart bottle and pushing back on the switch.
3. When finished diluting the product, turn water "OFF" at the faucet.

Eco Bag Installation Instructions

Do Not Cross Connect Quick Connect Lines
 For correct connection, match up panel number with Eco Cleaner line label, e.g:

E15
Hydrogen Peroxide Cleaner

For use:
 Spray & wipe inside restrooms
 Spray & wipe outside restrooms

E12
Glass Cleaner HD

For use:
 Mirrors
 Glass
 Plexiglas

E23
Neutral Disinfectant

For use:
 Floors outside restrooms
 Spray & wipe inside restrooms

E61
Heavy-Duty Cleaner

For use:
 Mopping cafeteria floors
 Spray and wipe for cafeteria tables & counter tops

E14
Muscle Cleaner

For use:
 White boards
 Pen Ink / graffiti removal

* This product meets Green Seal™ Standard GS-37 based on effective performance, concentrated volume, minimized/ recycled packaging, and protective limits on VOCs and human & environmental toxicity. GreenSeal.org