

School Capacity and Utilization Task Force

November 8, 20 23

School Capacity & Utilization Task Force

Meeting #5

November 8, 2023, 5-7 p.m.

Karshner Center – 309 4th St NE Puyallup, WA 98372

Welcome/Introduction

- Welcome - Review / Approve Meeting #4 Minutes
- Introduction of School Board President Joseph Romero

Recap Meeting #4

- Summary of Region 1 Discussion
- Task Force Meeting Roadmap update

Region 2 Introduction

- Schools & Programs in Region 2
- Region 2 School Capacity & Enrollment

Enrollment Projection Factors

- District-wide Factors
- Carson Elementary Case Study

Break (5 min.)

Student Waivers/Transfers

- School Board Policy Review
- School Attendance Matrices

Closing / Survey Question



Next Meeting

Meeting #6

November 30, 2023, 5-7pm

Karshner Center – 309 4th St NE, Puyallup, WA 98372

Meeting Norms



Preserve this as a safe space
for open, honest discussion.

Give grace
and
space



If you present a problem,
then you should also
present a solution.



Keep an
infectious sense
of possibility
of what we can
accomplish



Engage fully
with honesty
and integrity



Respect the rights,
differences, and dignity
of others

Come
with an
open mind.



CHARTER

The **School Capacity and Utilization Task Force** is commissioned by the Board of Directors for the purpose of developing and evaluating recommendations to support the interim housing of students in the PreK-12th grade settings of the Puyallup School District until a future capital levy and/or bond program is funded and constructed.

You're Invited!

Patron Tour Region 2 on Nov. 14

Join us **Tuesday, November 14**, for an insider's look into **Puyallup High School, Aylen Junior High and Spinning Elementary**. Patron Tours also provide a sneak peek inside our central kitchen, EdTec, print shop and warehouse.

- Event begins at 8:30 a.m. and concludes at 1:00 p.m.
- Attendees who aren't able to commit to the entire tour are able to join and leave when convenient for them.
- Enjoy a complimentary lunch at the end of the tour prepared and served by high school CTE culinary students from the new 'Farm-to-Fork' food truck.

Scan this QR code to sign up for the November 14 date or view additional tour dates:



REVIEW / APPROVE MEETING #4 MINUTES

- Meeting Minutes are emailed with upcoming meeting agenda
- Minutes are available on the MS TEAMS School Capacity and Utilization Task Force page.

Meeting Roadmap



A photograph of three students sitting at a table in a classroom, focused on writing or drawing on papers. The student on the left is wearing a dark baseball cap with a logo. The student in the middle is a young woman with curly hair tied back, wearing a dark jacket. The student on the right is a young woman with dark hair in a bun, wearing a light-colored sweater. In the background, a blue sign with the words 'Work Day' is visible. The entire image is overlaid with a semi-transparent dark blue filter.

Recap Meeting #4

Meeting #4 – Recap Learning Targets

- ☐ Understand how building capacity may change without any changes to the physical space.
- ☐ Be able to identify schools in Region 1.
- ☐ Identify which schools in Region 1 will be challenged to serve projected growth in enrollment.
- ☐ Be familiar with outside factor(s) that may have an impact on PSD enrollment near Region 1?

Region 1- Discovery Take Aways

- ✓ Boundary Changes
- ✓ Grade Reconfiguration
- ✓ Program Movement
- ✓ Hybrid Option
- ✓ Waivers
- ✓ Marketing Choice Enrollment
- ✓ Secondary School Utilization Rates
- ✓ Transportation

We will revisit all take aways from Region 1 , Region 2 and Region 3 in January as we work to prepare the interim recommendation to serve the projected growth in enrollment.

A background image showing students in a classroom setting, with one student in the foreground writing on a piece of paper. The image is overlaid with a dark blue semi-transparent filter.

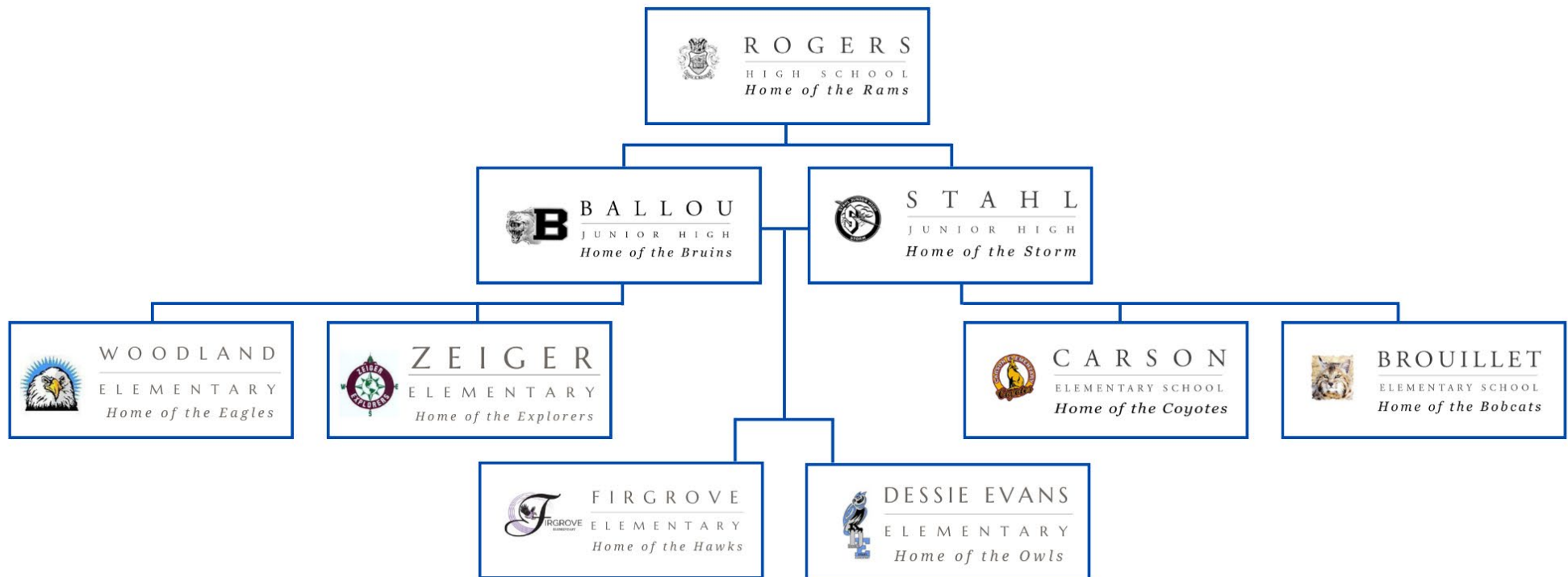
Region 2 Introduction

- Schools & Programs in Region 2
- Region 2 School Capacity & Enrollment

Meeting #5 –Learning Targets

- ☐ Be able to identify schools and programs in Region 2.
- ☐ Identify which schools in Region 2 will be challenged, if any, to serve enrollment growth from new housing.
- ☐ Be familiar with school board policy regarding waivers/transfers.
- ☐ Learn how to read the Attendance Matrix worksheets.
- ☐ Understand differences between Regions 1 and 2.

Region 2 Schools



Region 2



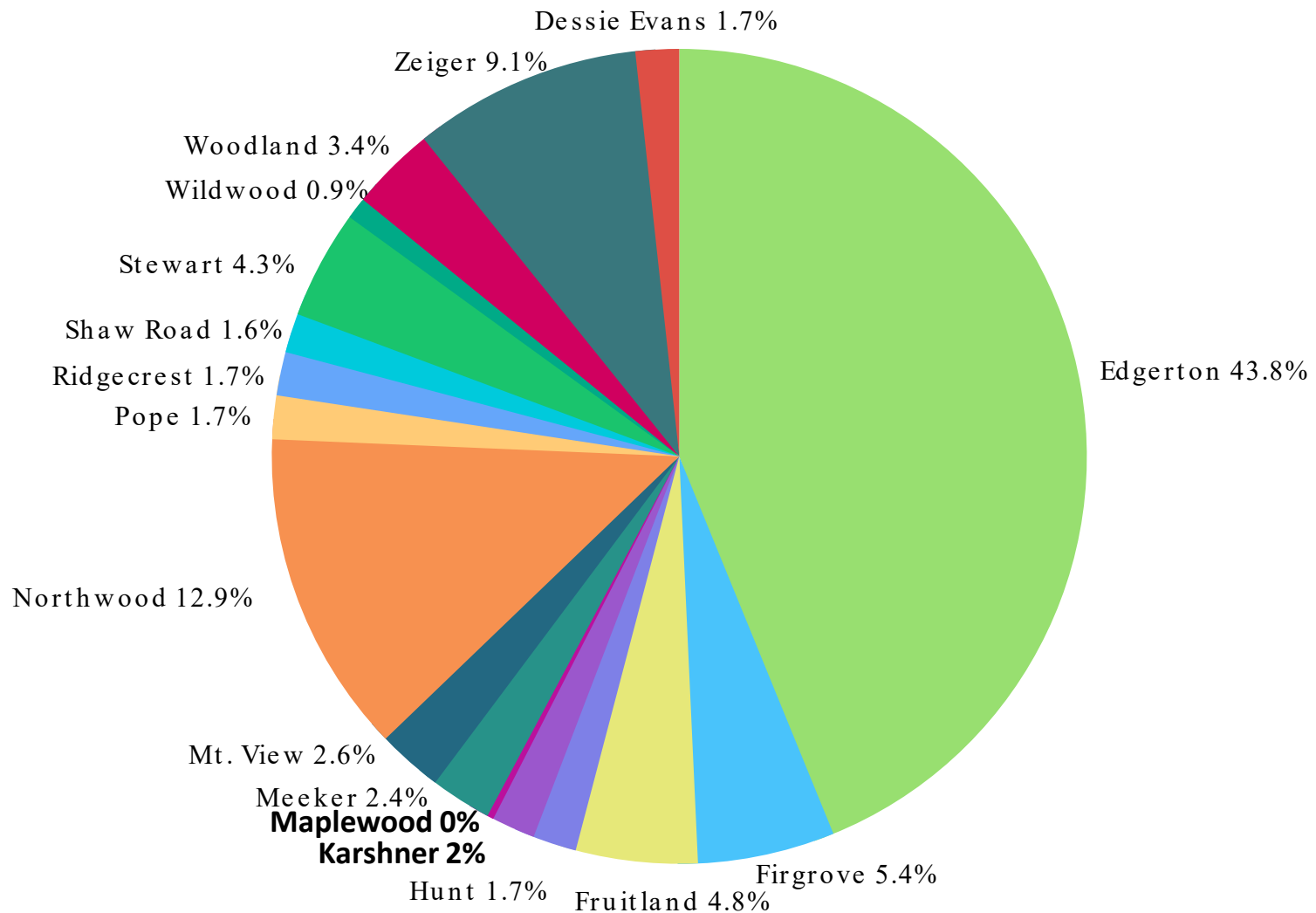
Featured Programs in Region 2

- Brouillet – Support Center (2), Developmental Kindergarten, QUEST (5)
- Carson – SPED Preschool, Kindergarten Academy (KA)
- Dessie Evans – WRAP (2), SPED Preschool (2), KA, Dual Language (K-4th)
- Firgrove – SPED Preschool (2), Support Center (2), KA
- Woodland – KITE (2), QUEST (2)
- Zeiger – DHH (3), SPED Preschool, KA
- Ballou JH– Support Center (2), DHH
- Stahl JH– KITE, EXCEL, PAGE
- Rogers HS – KITE, Support Center (2), DHH, WRAP (2)

(All schools have at least one classroom for the Resource Program)

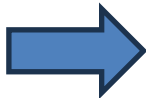
2022-2027 (5 YR) Single-Family Detached Only – Planned Housing Units by Elementary Attendance

Data compiled Nov. 2022



Region 2 Enrollment & Capacity

SCUT Elementary 2027-28 4-Year	BROUILLET	CARSON	DESSIE EVANS	FIRGROVE	WOODLAND	ZEIGER	REGION 2 TOTAL
Student Capacity (excluding Portables)	448	638	944	636	472	420	3,558
10/1/2023 Enrollment**	550	674	883	609	592	459	3,767
Enrollment w/ Projected Growth	550	674	884	634	605	488	3,834
Capacity +/-	(102)	(36)	60	2	(133)	(68)	(276)
Student Capacity (with portables)	668	792	944	636	648	684	4,372
Capacity +/-	118	118	60	2	43	196	538



Student capacity is based upon 22 students/classroom at 100% utilization rate. Northwood and Mt View use 21 students/classroom (K-5)

Preschool rooms and enrollment are not included in the capacity analysis.

*K-5th grade counts.

**Enrollment from Facilities Extract Cognos report pulled from eSchoolsPLUS on 10/1/2023. Does not include Preschool, Kindergarten Academy, P4 or PDL students.

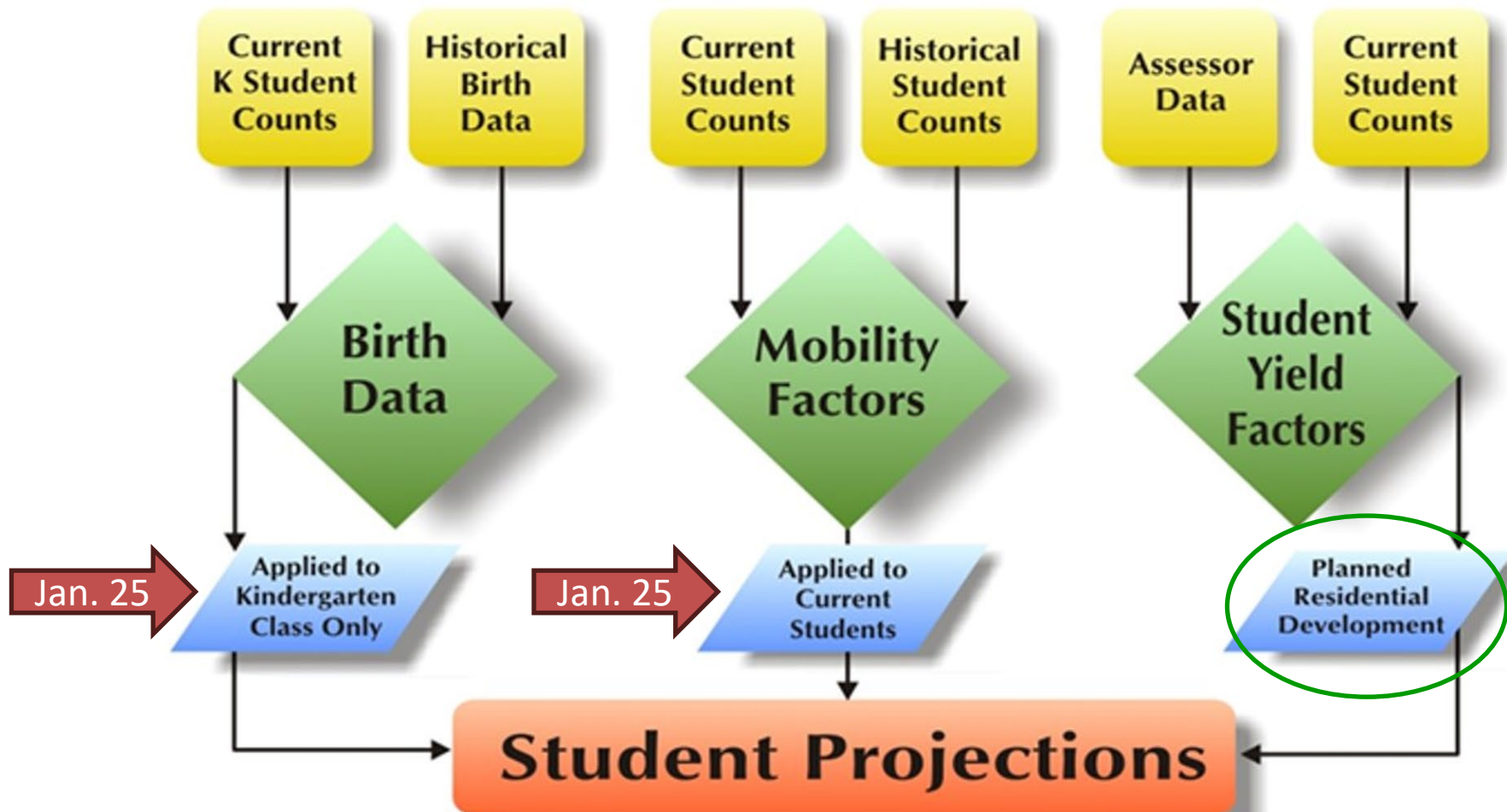
last updated: 10/30/23

A background image of students in a classroom, with a focus on two students in the foreground who are writing on papers. The image is dimmed with a blue overlay. A sign in the background says "Work Day".

Enrollment Projection Factors

- District-wide Factors
- Carson Elementary Case Study

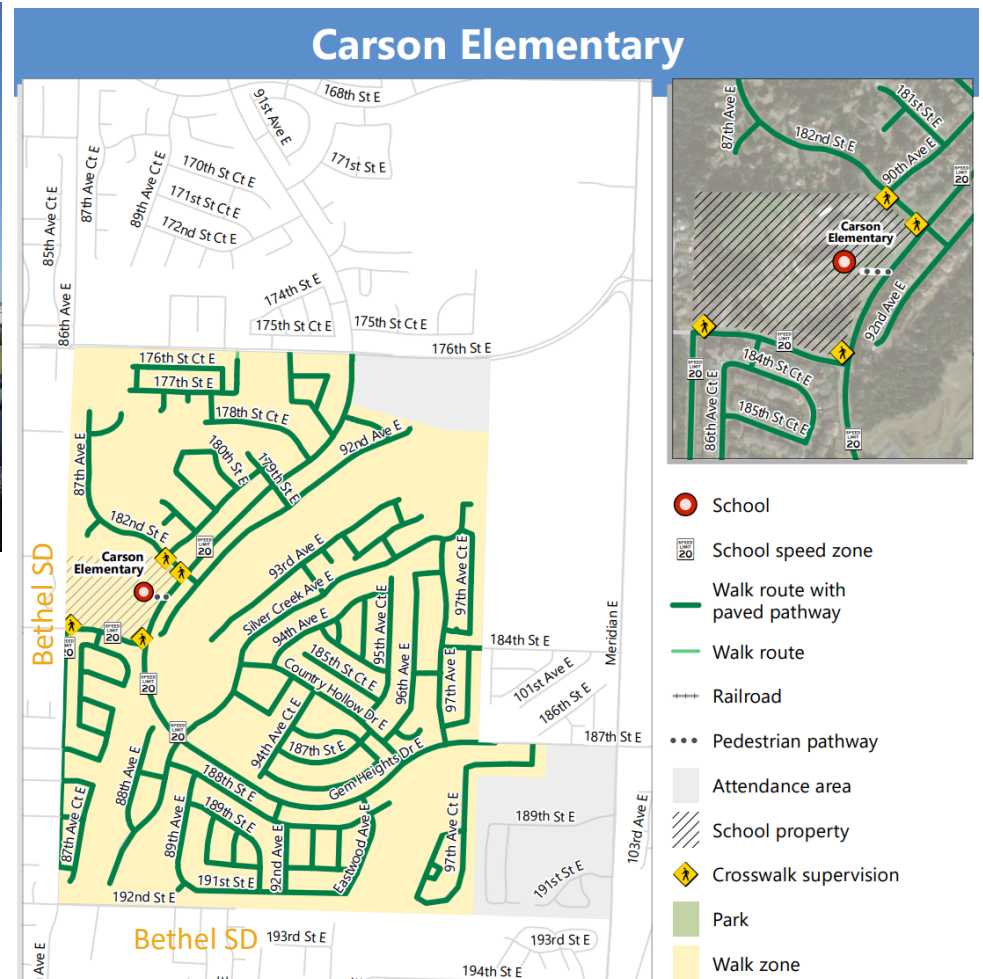
Enrollment Projection Inputs



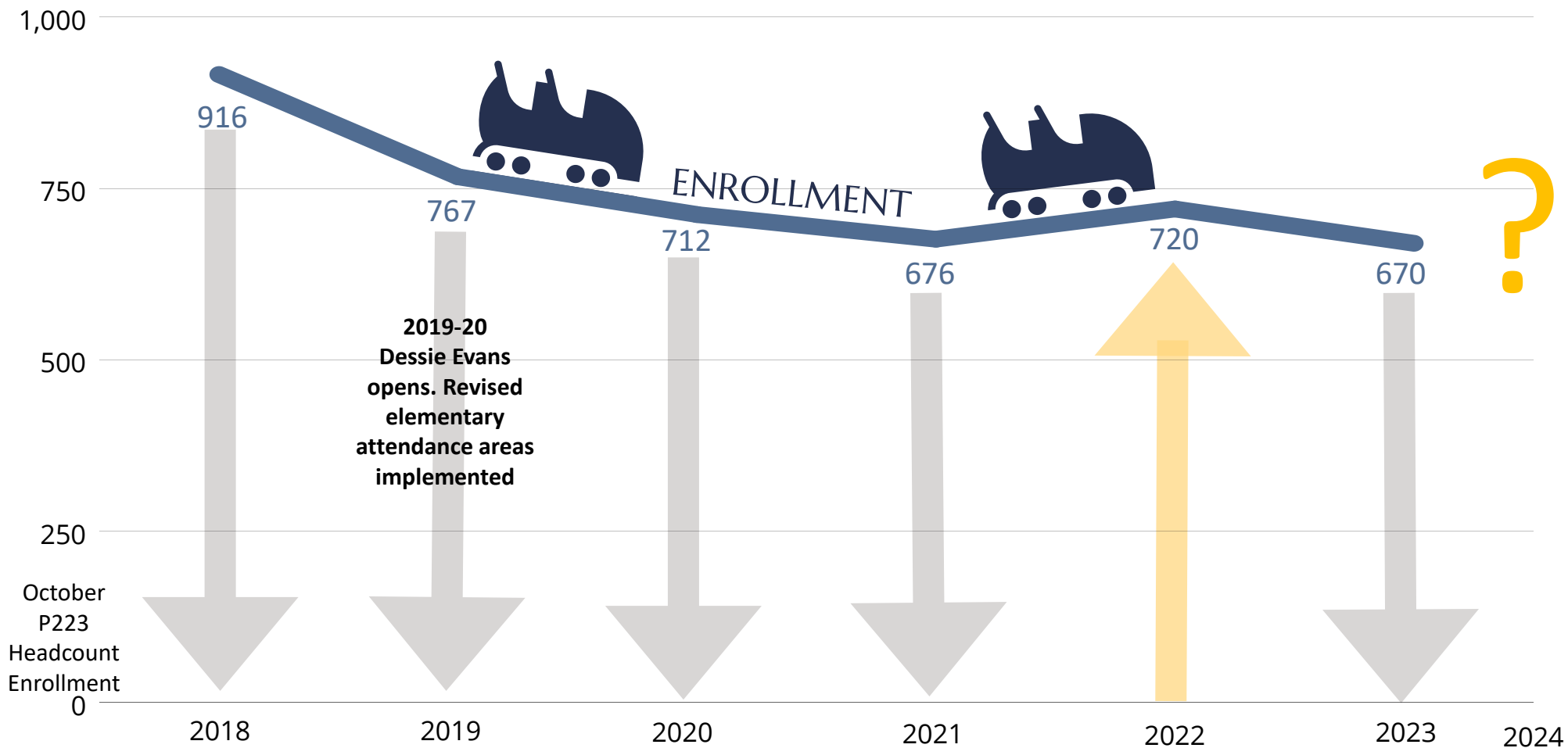
Carson Enrollment Case Study



- Silver Creek Master Planned Community – last homes built in 2017/18.
- Carson's western property line abut Bethel School District



Carson Enrollment Case Study



A photograph of three students sitting at a table, focused on their work. The student in the center is a young woman with dark hair in a bun, wearing a dark jacket, writing on a piece of paper. To her right, another student with dark hair is also writing. To the left, a third student wearing a dark baseball cap is partially visible, looking at a document. In the background, a blue sign with the words 'Work Day' is visible. The entire image has a dark blue overlay.

Break (5 minutes)

A background image showing two students, a young woman and a young man, sitting at a table and working on papers. The woman is in the foreground, looking down at her work, and the man is behind her, also working. The image is dimmed with a blue overlay. In the background, a sign with the words "Work Day" is visible.

Student Waivers / Transfers

- School Board Policy Review
- School Attendance Matrices

School Board Policy 3131 & 3131R

PSD Resident Students

- Required to attend the school designated via school attendance area
- Not applicable to students assigned to a school for programmatic purposes.
- Parents may request their student(s) transfer to attend another school in the district via an application process.
- Determination of approval is based on multiple factors, including space availability at the requested school.
- Transfer approval is conditioned upon several factors, including availability of transportation to/from school.

School Board Policy 3131 & 3131R

PSD Resident Students

- In-district transfer students will be accepted **for the duration of their school enrollment at that school** unless revoked by the district per policy and regulation or rescinded by the parent/guardian. 6th grade students entering 7th grade, and 9th grade students entering 10th grade, will return to their resident school of assignment **unless a transfer request is approved.**
- The district will grant transfer requests for students who are the children of full-time school employees residing within the district as required under RCW 28A.225.270(2).

School Board Policy 3141 & 3141R

Non-Resident Students

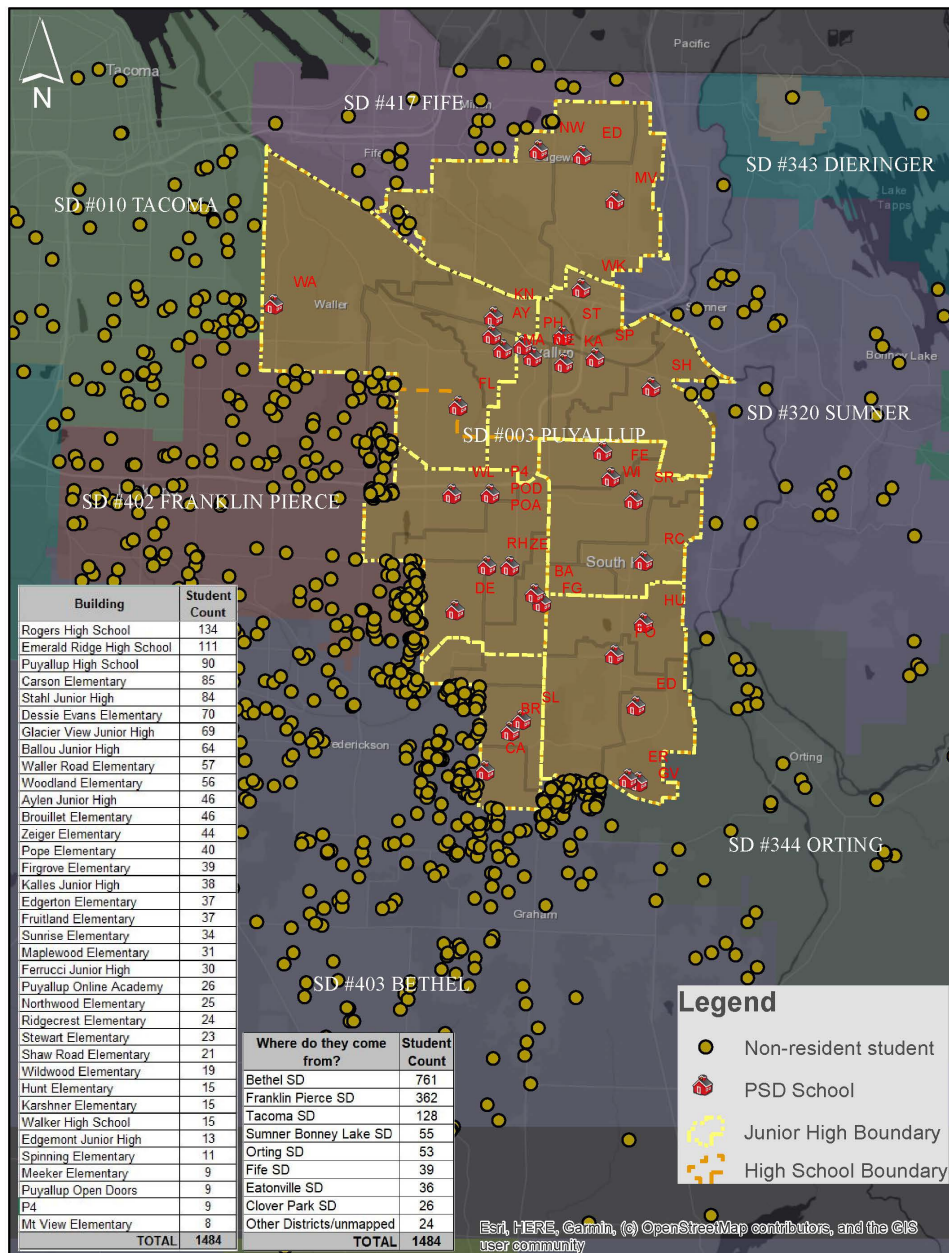
- Consistent with RCW.28A.225, any student who resides outside the Puyallup School District **may apply** to attend a school in the district.
- Non-Resident transfers granted are for **one school year only**. Requests for continued attendance must be initiated by the parent/guardian **annually**.
- Determination of approval is based on multiple factors, including space availability at the requested school.

School Board Policy 3141 & 3141R

Non-Resident Students

- Transfer approval is conditioned upon several factors, including availability of transportation to/from school and approved release from the resident district.
- The district will accept applications for non-resident students who are the children of full-time district employees pursuant to RCW 28A.225.225, at the school to which the employee is assigned or as outlined by Regulation 3141R.

2022-23 Puyallup School District Non-Resident Students



Building	Student Count
Rogers High School	134
Emerald Ridge High School	111
Puyallup High School	90
Carson Elementary	85
Stahl Junior High	84
Dessie Evans Elementary	70
Glacier View Junior High	69
Ballou Junior High	64
Waller Road Elementary	57
Woodland Elementary	56
Aylen Junior High	46
Brouillet Elementary	46
Zeiger Elementary	44
Pope Elementary	40
Firgrove Elementary	39
Kalles Junior High	38
Edgerton Elementary	37
Fruitland Elementary	37
Sunrise Elementary	34
Maplewood Elementary	31
Ferrucci Junior High	30
Puyallup Online Academy	26
Northwood Elementary	25
Ridgecrest Elementary	24
Stewart Elementary	23
Shaw Road Elementary	21
Wildwood Elementary	19
Hunt Elementary	15
Karshner Elementary	15
Walker High School	15
Edgemont Junior High	13
Spinning Elementary	11
Meeker Elementary	9
Puyallup Open Doors	9
P4	9
Mt View Elementary	8
TOTAL	1484

Where do they come from?	Student Count
Bethel SD	761
Franklin Pierce SD	362
Tacoma SD	128
Sumner Bonney Lake SD	55
Orting SD	53
Fife SD	39
Eatonville SD	36
Clover Park SD	26
Other Districts/unmapped	24
TOTAL	1484

SCHOOL OF ATTENDANCE - October 2022

Elementary Attendance Area	K-6 Students	SCHOOL OF ATTENDANCE - October 2022																								Transfer Out Rate	Transfer Out Count
		BROUILLET	CARSON	DESSIE EVANS	EDGERTON	FIRGROVE	FRUITLAND	HUNT	KARSHNER	MAPLEWOOD	MEEKER	MT VIEW	NORTHWOOD	POPE	RIDGECREST	SHAW RD	SPINNING	STEWART	SUNRISE	WALLER RD	WILDWOOD	WOODLAND	ZEIGER	EDGE MONT <small>5th grade only</small>			
BROUILLET	415	376	6	16	3	0	4	2	0	1	0	0	0	2	1	0	0	0	1	0	0	1	2	0	9.4%	39	
CARSON	638	12	598	13	4	2	0	1	0	3	0	0	0	1	1	0	0	1	0	0	0	0	2	0	6.3%	40	
DESSIE EVANS	765	2	3	717	5	6	1	1	0	3	1	0	0	3	0	0	0	0	1	2	2	5	13	0	6.3%	48	
EDGERTON	677	1	8	7	616	5	2	5	2	0	0	0	1	13	8	3	2	0	2	0	0	0	2	0	9.0%	61	
FIRGROVE	579	15	7	17	5	478	1	5	1	3	1	0	0	1	5	6	0	0	6	0	1	5	22	0	17.4%	101	
FRUITLAND	468	0	0	1	0	1	441	0	3	9	2	0	1	0	0	3	3	1	0	0	0	3	0	0	5.8%	27	
HUNT	740	0	0	11	10	13	2	625	2	4	3	0	0	12	20	4	0	2	15	0	1	4	11	1	15.5%	115	
KARSHNER	408	0	1	1	1	0	19	0	329	30	7	0	5	0	0	5	2	5	0	1	1	1	0	0	19.4%	79	
MAPLEWOOD	183	0	0	0	0	0	4	0	4	164	3	0	2	0	1	0	1	2	0	2	0	0	0	0	10.4%	19	
MEEKER	351	0	2	4	0	3	6	1	2	14	299	0	0	0	2	1	4	3	2	0	4	4	0	0	14.8%	52	
MT VIEW	336	0	0	0	0	0	1	0	4	1	4	256	11	0	0	2	0	12	0	0	0	0	0	45	10.4%	35	
NORTHWOOD	660	0	0	0	0	0	0	2	1	5	0	4	559	0	0	0	0	4	2	0	0	1	0	82	2.9%	19	
POPE	570	1	1	2	26	0	0	5	0	0	0	0	0	514	6	0	0	0	7	0	1	5	2	0	9.8%	56	
RIDGECREST	367	1	0	4	4	2	1	3	0	1	1	0	0	0	328	5	0	2	11	0	3	1	0	0	10.6%	39	
SHAWROAD	458	0	0	0	0	2	0	2	5	5	1	1	0	0	6	412	5	4	6	1	3	4	1	0	10.0%	46	
SPINNING	230	0	0	0	2	0	2	0	2	6	6	0	1	0	1	8	187	10	2	0	3	0	0	0	18.7%	43	
STEWART	286	0	0	2	0	1	0	2	2	1	13	9	1	0	1	5	8	239	2	0	0	0	0	0	16.4%	47	
SUNRISE	554	3	4	3	2	4	3	2	1	8	3	0	0	1	17	11	1	2	477	0	6	0	6	0	13.9%	77	
WALLER RD	327	1	0	0	0	0	35	0	6	19	4	0	0	2	0	0	4	2	0	246	5	3	0	0	24.8%	81	
WILDWOOD	362	1	1	2	1	1	4	2	3	2	2	0	0	1	11	22	1	8	16	1	279	1	3	0	22.9%	83	
WOODLAND	458	0	0	7	0	2	20	0	1	4	6	0	0	1	4	3	0	1	0	0	2	398	9	0	13.1%	60	
ZEIGER	453	0	0	18	2	3	6	6	0	1	2	3	2	4	2	0	0	1	4	0	0	36	363	0	19.9%	90	
K-6 Sub-totals	10285	413	631	825	681	523	552	664	368	284	358	273	583	555	414	490	218	299	554	253	311	472	436	128	12.2%	1257	
Quest	498	61	0	44	0	0	0	0	0	0	0	0	56	93	0	95	52	0	58	0	0	39	0	0			
*Special Ed w/PreK	589	40	22	56	44	53	24	38	0	39	17	0	18	33	34	31	0	28	40	0	35	11	26	0			
**Out of District	707	40	85	67	37	38	37	15	15	30	8	8	24	32	24	19	11	22	30	57	19	51	32	6			
***Unmatched	36	0	3	1	1	6	1	1	0	2	1	1	5	0	4	0	0	2	4	1	0	0	1	2			
PK-6 Totals:	12115	554	741	993	763	620	614	718	383	355	384	282	686	713	476	635	281	351	686	311	365	573	495	136			
Transfer In Count	1957	77	118	175	102	83	148	54	54	150	67	25	48	73	110	97	42	82	107	64	51	125	105	7			
Transfer In Rate	16.2%	13.9%	15.9%	17.6%	13.4%	13.4%	24.1%	7.5%	14.1%	42.3%	17.4%	8.9%	7.0%	10.2%	23.1%	15.3%	14.9%	23.4%	15.6%	20.6%	14.0%	21.8%	21.2%	5.1%			
	District-wide																										

NOTE: The numbers above are based upon an export of student data from eSchoolPLUS via the Facilities Cognos Report on October 6, 2022

XX = student transfer counts 20 or greater

NOTE: The list of schools includes only those with an attendance area. Schools with no associated attendance area pull students throughout the District.

NOTE: The table does not include 150 K-6 students coded to Puyallup Parent Partnership, 5 K-6 EXCEL students at Stahl JH and 1 Northwood student coded to Homeschool. PK-6 Total with these students = 12,271

* "Special Education" counts are based upon data provided by Special Services dated 10/6/2022 and exclude students designated under the following Programs: OT/PT Only, "Resource, Speech-OT only, Speech Only. Query is STUTYPE = 'SE' AND GRD < 7 OR STUTYPE = 'PK'. Matrix does not include 5 K-6 EXCEL students at Stahl JH. Does not represent all Sped or PreK students based on order of designation with STUTYPE field.

** "Out of District" counts includes students that reside outside of the Puyallup SD boundary based upon the location of the Physical Address record. Query is STUTYPE = 'OD' AND GRD < 7. Does NOT represent all Out of District students.

*** "Unmatched" includes students with a Physical Address record that could not be successfully mapped (geocoded). Query is STUTYPE = 'UM' AND GRD < 7. Does NOT represent all Unmatched students.

SCHOOL OF RESIDENCE (BASED ON CURRENT ATTENDANCE AREAS)	Junior High Attendance Area	7th-9th Grade Students	SCHOOL OF ATTENDANCE - October 2022							Transfer Out Rate	Transfer Out Count
			AYLEN	BALLOU	EDGEMONT (7th-9th grade only)	FERRUCCI	GLACIER VIEW	KALLES	STAHL		
	AYLEN	630	590	10	1	3	1	23	2	6.3%	40
	BALLOU	770	20	726	0	4	6	4	10	5.7%	44
	EDGEMONT	389	2	0	373	0	3	11	0	4.1%	16
	FERRUCCI	710	15	20	1	609	24	35	6	14.2%	101
	GLACIER VIEW	723	2	15	0	7	690	5	4	4.6%	33
	KALLES	562	12	8	0	5	3	533	1	5.2%	29
	STAHL	728	5	21	0	5	10	4	683	6.2%	45
	7-9 Sub-totals	4512	646	800	375	633	737	615	706	6.8%	308
	PAGE	404	0	0	0	114	0	171	119		
	*Special Ed	130	19	25	0	44	26	15	1		
	**Out of District	316	45	61	7	25	69	33	76		
	***Unmatched	24	4	5	7	3	0	1	4		
	****Other	9	0	0	3	0	2	0	4		
	7-9 Totals:	5395	714	891	392	819	834	835	910		
	Transfer In Count	624	101	135	9	49	116	115	99		
	Transfer In Rate	11.6%	14.1%	15.2%	2.3%	6.0%	13.9%	13.8%	10.9%		
	District-wide										

xx = student transfer counts 20 or greater.

NOTE: The numbers above are based upon an export of student data from eSchoolPLUS via the Facilities Cognos Report on October 6, 2022

NOTE: 6th grade students at Edgemont JH are included in the K-6 Elementary Attendance Matrix.

NOTE: The list of schools includes only those with an attendance area. Schools with no associated attendance area pull students throughout the District.

* "Special Education" counts are based upon data provided by Special Services dated 10/6/2022 and exclude students designated under the following Programs: OT/PT Only, "Resource, Speech-OT only, Speech Only. Query is STUTYPE = SE AND GRD >= 7 AND GRD <= 9. Does not represent all Sped students due to order of designation of STUTYPE field. Does not include 3 9th-Grade EXCEL students at ERHS and 1 9th-Grade Support Center student at PHS.

** "Out of District" counts represents students that reside outside of the Puyallup SD boundary based upon the location of the Physical Address record. Query is STUTYPE = OD AND GRD >= 7 AND GRD <= 9. Does not represent all OD students based on order of designation with STUTYPE field.

*** "Unmatched" represents a student with a Physical Address record that could not be successfully mapped (geocoded). Query is STUTYPE = UM. Does not represent all UM students based on order of designation with STUTYPE field.

**** "Other" represents students GRD 7-9 with a STUTYPE value other than: AE, RS, OD, OT, SE, or UM (in this case, all Homeschool Curriculum students). These numbers exclude the following "Buildings": (106) students-Puyallup Online Academy, (1)-P4, (6)-Walker High School, (1)-ERHS Gen Ed 9th grade student. Total with these students = 5,513.

		SCHOOL OF ATTENDANCE - October 2022					
SCHOOL OF RESIDENCE	High School Attendance Area	10th - 12th Grade Students	EMERALD RIDGE	PUYALLUP	ROGERS	Transfer Out Rate	Transfer Out Count
	EMERALD RIDGE	1389	1226	91	72	11.7%	163
	PUYALLUP	1257	12	1210	35	3.7%	47
	ROGERS	1530	53	128	1349	11.8%	181
	10-12 Sub-totals	4176	1291	1429	1456	9.4%	391
*Special Ed		180	44	53	83		
**Out of District		303	103	85	115		
***Unmatched		24	3	15	6		
****Other		12	3	3	6		
10-12 Totals:		4695	1444	1585	1666		
Transfer In Count		694	168	304	222		
Transfer In Rate		14.8%	11.6%	19.2%	13.3%		
		District-wide					

NOTE: The numbers above are based upon an export of student data from eSchoolPLUS via the Facilities Cognos Report on October 6, 2022

NOTE: The list of schools includes only those with an attendance area. Schools with no associated attendance area pull students throughout the District. Excludes 440 students STUTYPE="AE" (216 POA, 83 POD, 141 Walker HS). Also excludes 294 Full-time Running Start students STUTYPE="IS" (97 ERHS, 115 PHS, 82 RHS)

* "Special Ed" counts based upon data provided by Special Services dated 10/6/2022. Excludes students designated under the following Programs: OT/PT Only, Resource, Speech-OT only, Speech Only. Query is STUTYPE = SE AND GRD >= 10. Does not represent all Sped students based on order of designation of STUTYPE field. Excludes 9 10th grade 'SE' students housed at Junior High: AJH-2, BJH-4, KJH-3.

** "Out of District" counts represents students that reside outside of the Puyallup SD boundary based upon the location of the Physical Address record. Query is STUTYPE = OD AND GRD >= 10. Does not represent all OD students based on order of designation with STUTYPE field.

*** "Unmatched" represents a student with a Physical Address record that could not be successfully mapped (geocoded). Query is STUTYPE = UM. Does not represent all UM students based on order of designation with STUTYPE field.

**** "Other" represents students GRD 10-12 with a STUTYPE = HH or STUTYPE=NP. These numbers exclude students assigned to the following Buildings: Puyallup Online Academy, P4, and Walker High School. Total with all students = 5,438.

Questions?

Brian Devereux

Facilities Planning Director

DevereBJ@puyallup.k12.wa.us

(253) 841-8772

Brady Martin

Director of Capital Projects

martibl@puyallup.k12.wa.us

November 8, Region 2 Exit Survey



Meeting #6

November 30, 2023, 5-7pm

Karshner Center – 309 4th St NE, Puyallup, WA 98372

[Http://www.puyallupsd.org/scut](http://www.puyallupsd.org/scut)

You're Invited!

Patron Tour Region 2 on Nov. 14

Join us **Tuesday, November 14**, for an insider's look into **Puyallup High School, Aylen Junior High** and **Spinning Elementary**. Patron Tours also provide a sneak peek inside our central kitchen, EdTec, print shop and warehouse.

- Event begins at 8:30 a.m. and concludes at 1:00 p.m.
- Attendees who aren't able to commit to the entire tour are able to join and leave when convenient for them.
- Enjoy a complimentary lunch at the end of the tour prepared and served by high school CTE culinary students from the new 'Farm-to-Fork' food truck.

Scan this QR code to sign up for the November 14 date or view additional tour dates:

