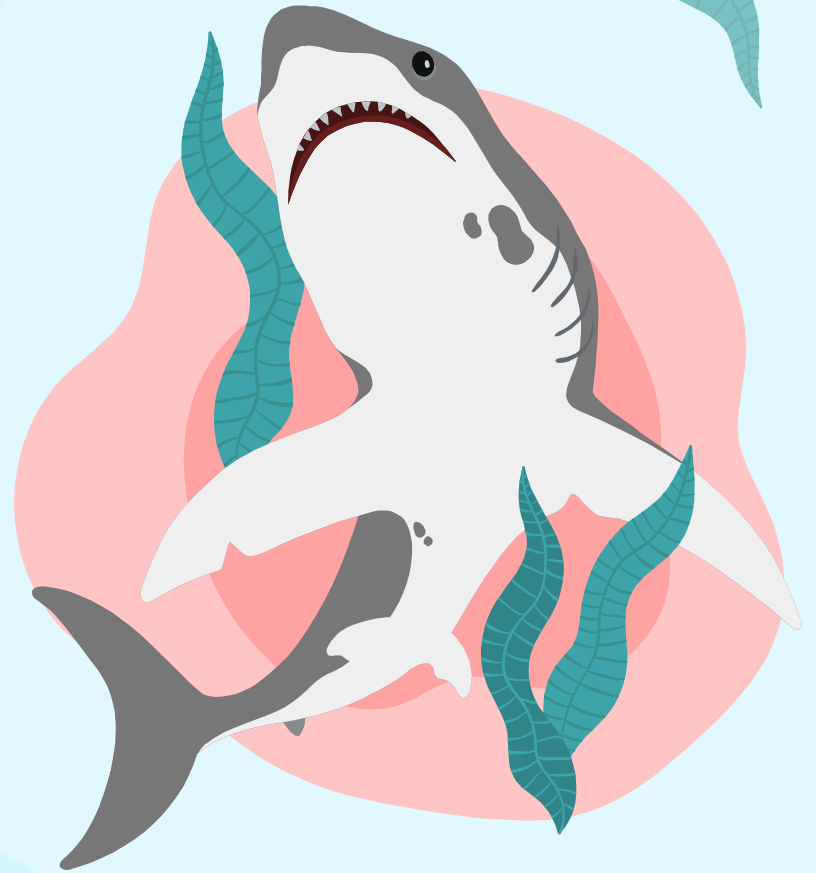


Reimagining Middle Schools

BELLEVUE SCHOOL DISTRICT
2022-2023 SCHOOL YEAR
STEERING COMMITTEE MEETING #7
(11/17/22)
BIG PICTURE



Mixed Groups

We Go Deep #1	Reef Explorers #2	Water Warriors #3	Crashing Waves #4	Sea Swimmers #5
Anissa	Courtney	Valeri	Wen	Gaurav
Sahaj	Dan	Hasini	Diego	Jessi
Kim	Danielle	Tori	Scott	Gabe
Mariela	Anna	Mathew	Tom	Susie
Gargi	Dee	Regen	Kalena	Nellie
Drew	Ishaan	James		Susan

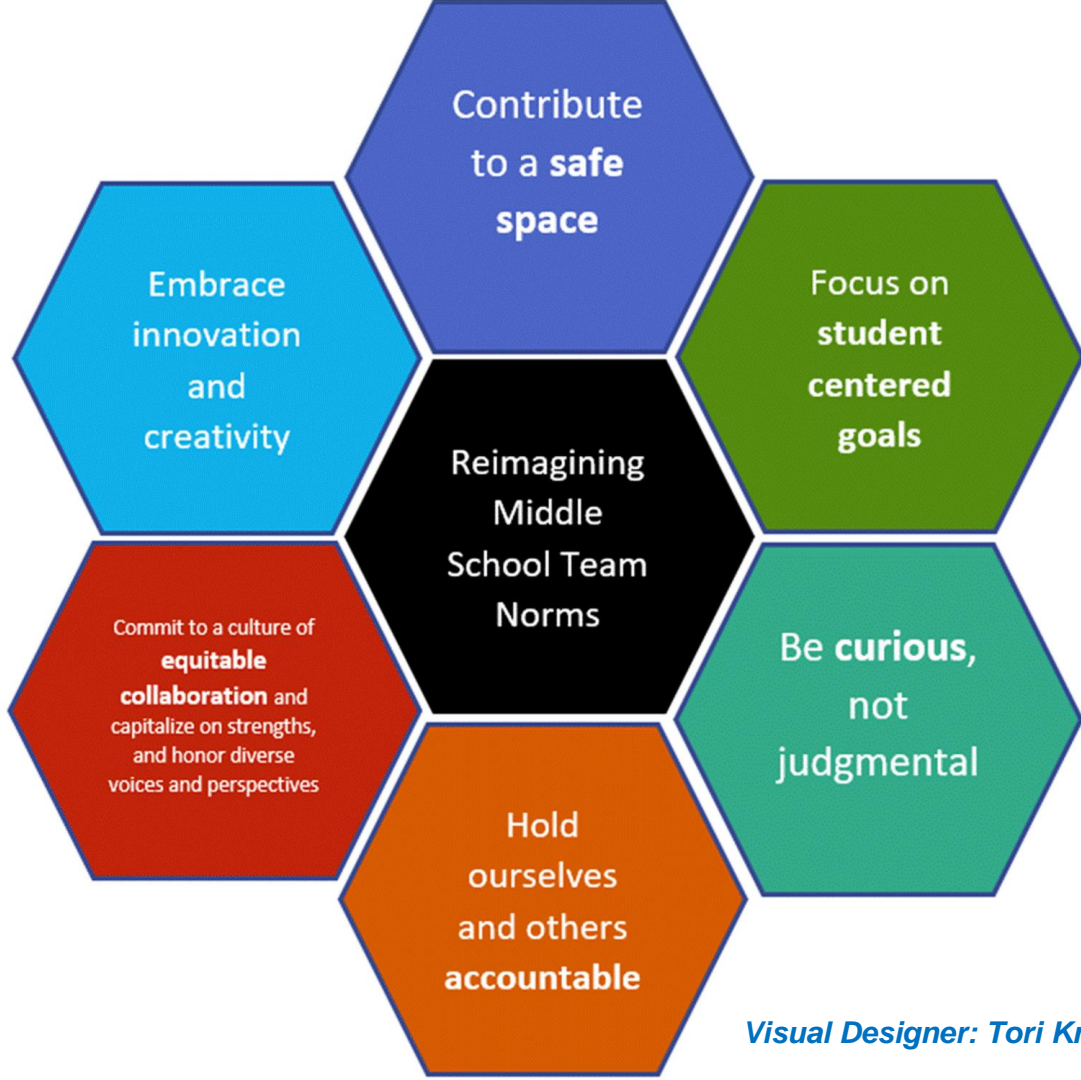
Agenda

- Inclusive Welcome
- Ideation
- Learning Walks
- **Break**
- Empathy Interview
- Making Sense of Data
- Ideation Sprint #1
- **Lunch**
- Innovative MS
- Ideation Sprint #2
- Student Voice
- "Shark Tank" Preparation
- Show Time
- Optimistic Closing

Community Agreements

Roles

<i>Timekeeper</i>	<i>Note Taker</i>	<i>Process Monitor</i>
James	Kim	Self-Reflection



Visual Designer: Tori Knight

Today's Objectives

01

We Empathize

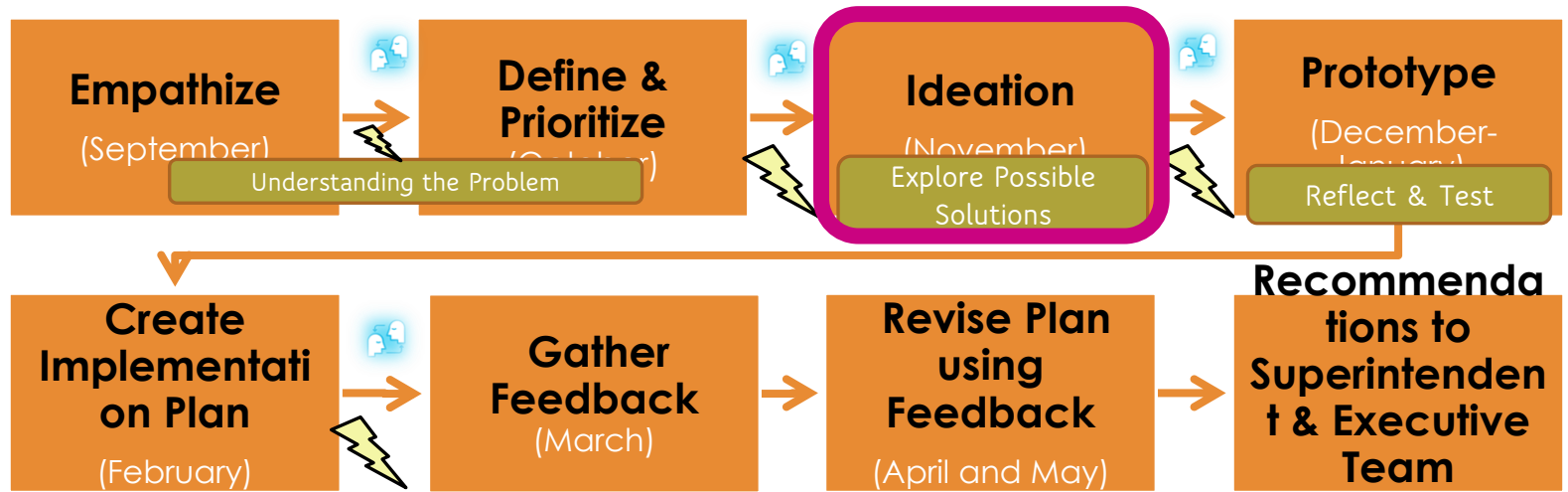
- High School Students Video
- Interview Panel with Big Picture and International
- Learning Walks
- AVID Student Projects

02

We IDEATE

- Review our vision ("We will create middle schools that offer a developmentally responsive, student-centered education.")
- Create recommendations

RMS Roadmap



EQUITY-CENTERED DESIGN THINKING PROCESS AND TIMELINES



Checkpoint



Feedback Loop

Preparation for
Implementation
(June-December
2023)

Implementation
(September
2024)

- * Review Steering Committee's overarching project vision
- * Create "How might we . . ." questions

- * Gather Feedback Level 1
- * Review Constrains (if any)
- * Refine Recommendation
- * Reach Consensus

- Reviewing Feedback
- Refining Recommendations

Executive Team



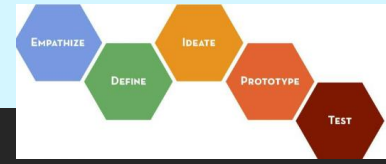
+Level 2 Members

- *Student Voices- HS and MS
- *Study Innovated MS
- * Learning Walks at Big Picture
- *Empathy Interview with International and Big Picture
- * Create Recommendations

+Level 2 Members

- * Launch Listening Campaign
- * Visiting Innovated MS

EXPLORE POSSIBLE SOLUTIONS



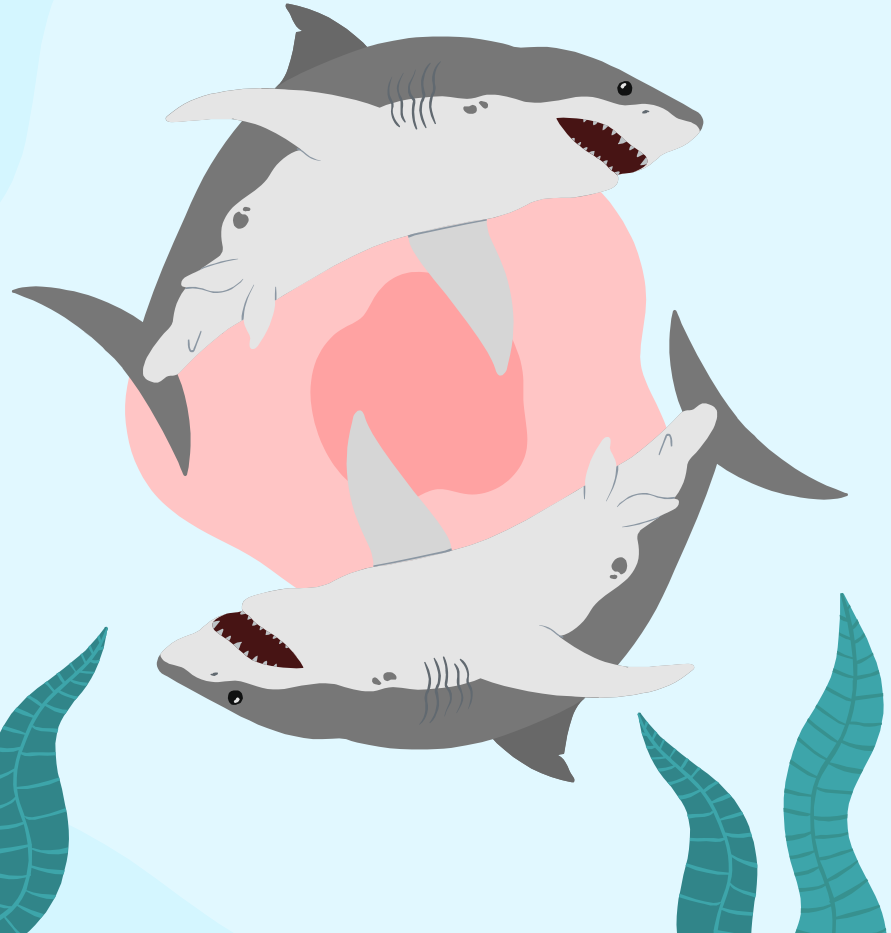




The Serious Business of Play

01

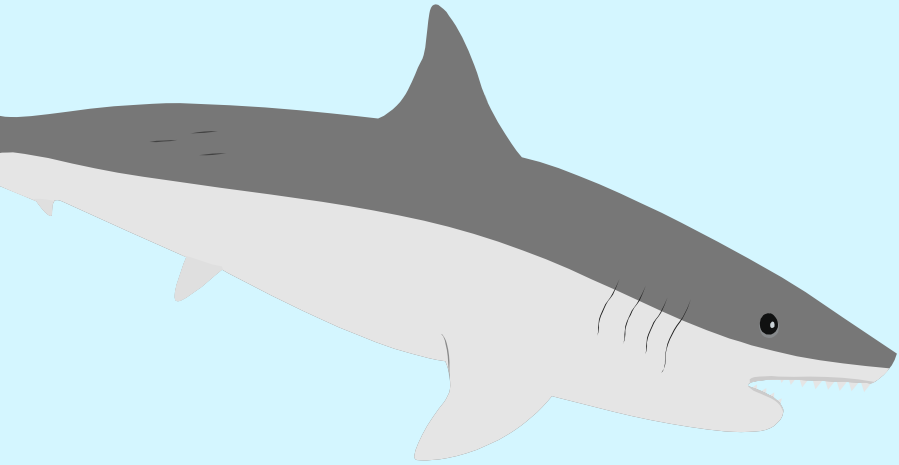
WE
Empathize



Student Voice

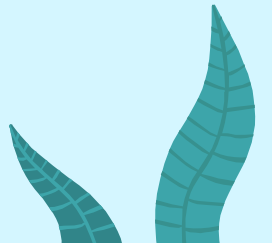
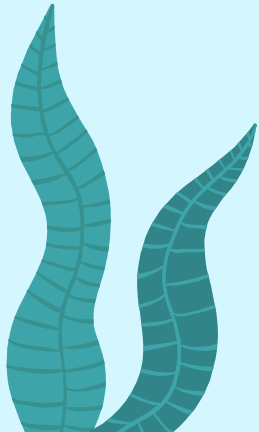
Dream Catchers host Charlie Haywood interviews BSD High School students for Reimagining Middle Schools.





02

**WE
IDEATE**



RMS Vision

Rooted in relationships

Learning environment & academic interactions

We will redesign the middle school experience to offer a developmentally responsive, student-centered education.

Social interactions & social-emotional needs

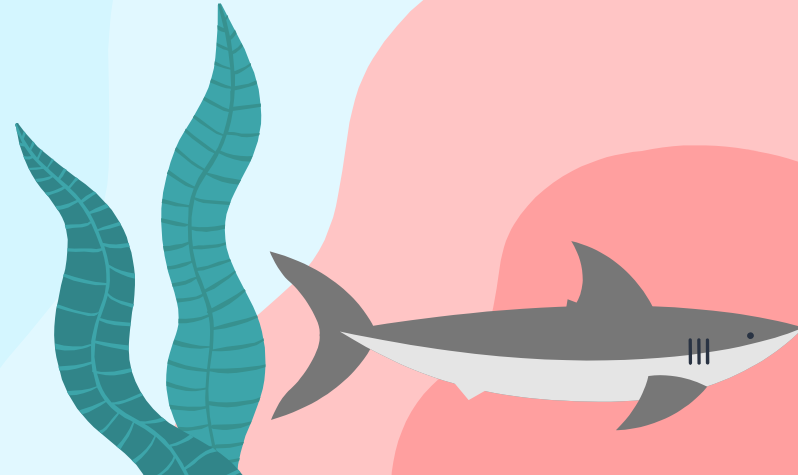
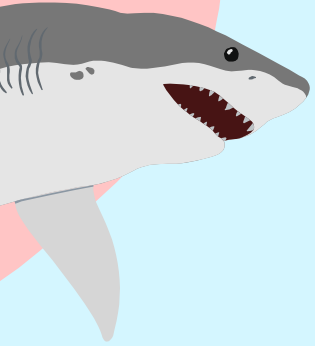
Meet students where they are

Bridge between elementary & high school

What is Ideation?

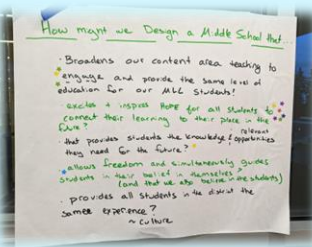
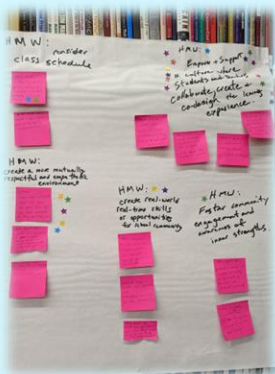
1. Generating ideas
2. Focusing on the **number of ideas** rather than quality
3. Uncovering and exploring new angles and avenues—to think outside the box
4. Independent thinking with collaboration

It's not about coming up with the 'right' idea, it's about generating the broadest range of possibilities." — Hasso Plattner Institute of Design at Stanford

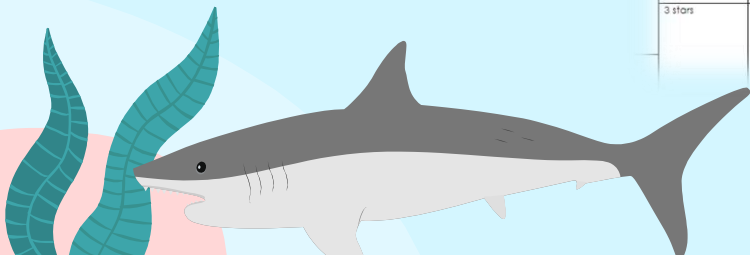
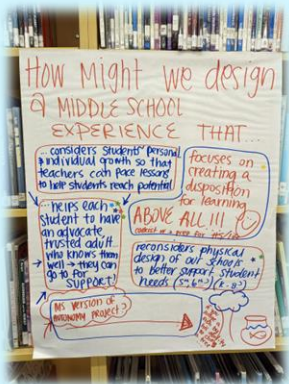
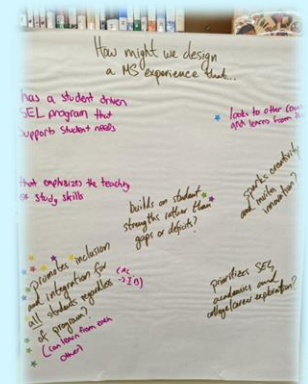
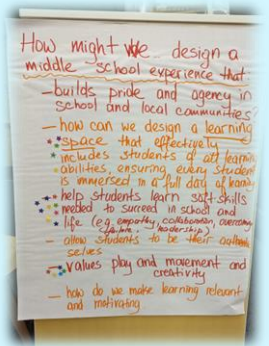




How Might We...?



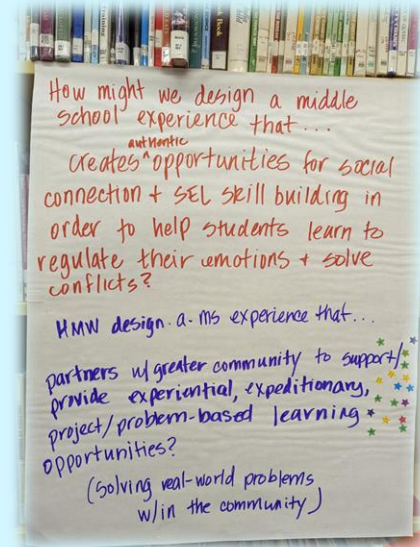
stars	Count the
★	
17 stars	<ul style="list-style-type: none"> Partners with greater community to support/provide experiential, expeditionary, project/problem-based learning opportunities (solving real-world problems within the community)?
14 stars	<ul style="list-style-type: none"> How might we empower and support a culture where students and teachers collaborate, create, and co-design the learning experience?
11 stars	<ul style="list-style-type: none"> Promotes inclusion and integration for all students regardless of a program? (can learn from each other)?
10 stars	<ul style="list-style-type: none"> That makes rigor accessible to ALL students regardless of program or school?
9 stars	<ul style="list-style-type: none"> Helps students learn soft skills needed to succeed in school and life (empathy, collaboration, overcoming failure, leadership)?
8 stars	<ul style="list-style-type: none"> How might we create a culture where students and teachers collaborate and co-design learning experiences? How might we create balanced homework load on students and think about the purpose of homework? How might we develop a collaborative learning culture for students and educators? What type of support do teachers get? <ul style="list-style-type: none"> Engagement, relevant, and challenging, teachers need time to ideate to accomplish this
7 stars	<ul style="list-style-type: none"> How might we create a more mutually respectful and empathetic environment? <ul style="list-style-type: none"> How might we show our students that we care, we are here to see them succeed so they can reach out? How might we create more awareness of students' feelings about their school experience directly to their teachers? How might we treat everyone equally and not treat a student differently, think about other students too?
5 stars	<ul style="list-style-type: none"> How can we design a learning space that effectively includes students of all learning abilities, ensuring every student is immersed in a full day of learning Values play and movement and creativity
3 stars	<ul style="list-style-type: none"> Broadens our content area teaching to engage and provide the same level of education for our MLL students That recognizes developmental needs and serves as a bridge (5-6, 8-9) Offers choice/opportunity for students to drive their learning during the school day





How might we design a middle school experience that . . .

Partners with the greater community to support/provide experiential, expeditionary, project/problem-based learning opportunities (solving real-world problems within the community?)



Show Time!

Ideation Sprint #1

Brainstorming ideas!



Ideation Sprint #2

Add ideas from innovative MS



Shark Tank

Bring it all together!
Prepare for the five-minute pitch.



Show Time!

Give your pitch!



Possible Show Time Examples



A Day in a Life

A narrative of a student's day



List

Prioritized List of Recommendations



Diagram

Illustration (s) of recommendations

A thumbnail image of a table with a header 'Thursday' and several rows of time slots and activities.

Thursday		
1	8:10	9:40
3	9:45	11:20
Launch	11:20	11:50
6	11:55	1:30
7	1:35	3:00
Tutorial	3:05	3:40

Schedule

Design a schedule in table format



Video

Sharing the Top Recommendations



Your Choice

Be yourself!

Mixed Groups

	We Go Deep #1	Reef Explorers #2	Water Warriors #3	Crashing Waves #4	Sea Swimmers #5
Responsive	Anissa	Courtney	Valeri	Wen	Gaurav
Challenging	Sahaj	Dan	Hasini	Diego	Jessi
Empowering	Kim	Danielle	Tori	Scott	Gabe
Equitable	Mariela	Anna	Mathew	Tom	Susie
Engaging	Gargi	Dee	Regen	Kalena	Nellie
	Drew	Ishaan	James		Susan
Classroom 1 8:55-9:10	IMT 1(Charmee) room # 115	Art 6 (Erica) room #118	LA 7 (Ariana) room #414	Alg 1 (Sally) room #114	SS 7 (Anne) room # Library
Classroom 2 9:13-9:25	SS 7 (Anne) room # Library	Alg 1 (Sally) room #114	Art 6 (Erica) room #118	LA 7 (Ariana) room #414	IMT 1(Charmee) room # 115

Classroom Learning Walk

Look for evidence/examples of:

**Responsive,
Challenging,
Empowering,
Equitable,
Engaging**

Instructional strategies and
student experiences.

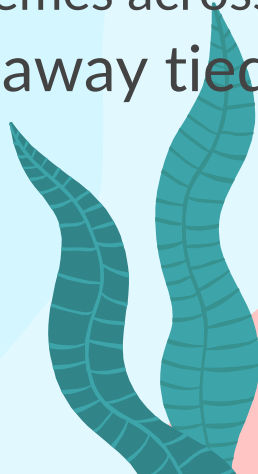
Attribute	Notes, observations, examples
Responsive Using the distinctive nature of young adolescents as the foundation upon which all decisions about school organization, policies, curriculum, instruction, and assessment are made.	
Challenging Ensuring that every student learns and every member of the learning community is held to high expectations	
Empowering Providing all students with the knowledge and skills they need to take responsibility for their lives, to address life's challenges, to function successfully at all levels of society, and to be creators of knowledge.	
Equitable Advocating for and ensuring every student's right to learn and providing appropriately challenging and relevant learning opportunities for every student.	
Engaging Fostering a learning atmosphere that is relevant, participatory, and motivating for all learners.	

Mixed Groups

	We Go Deep #1	Reef Explorers #2	Water Warriors #3	Crashing Waves #4	Sea Swimmers #5
Responsive	Anissa	Courtney	Valeri	Wen	Gaurav
Challenging	Sahaj	Dan	Hasini	Diego	Jessi
Empowering	Kim	Danielle	Tori	Scott	Gabe
Equitable	Mariela	Anna	Mathew	Tom	Susie
Engaging	Gargi	Dee	Regen	Kalena	Nellie
	Drew	Ishaan	James		Susan
Classroom 1 8:55-9:10	IMT 1 (Charmee) room # 115	Art 6 (Erica) room #118	LA 7 (Ariana) room #414	Alg 1 (Sally) room #114	SS 7 (Anne) room # Library
Classroom 2 9:13-9:25	SS 7 (Anne) room # Library	Alg 1 (Sally) room #114	Art 6 (Erica) room #118	LA 7 (Ariana) room #414	IMT 1 (Charmee) room # 115

Learning Walk Debrief

- In Essential Attribute groups, share your observation experiences.
 - Identify **unique** observations, evidence, examples
 - Identify **common** observations, themes across classrooms
- Be prepared to share **1** key takeaway tied to your essential Attribute



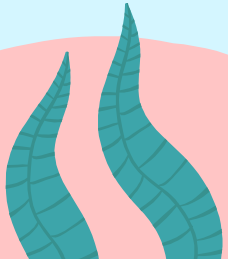
Break

Shark Bait



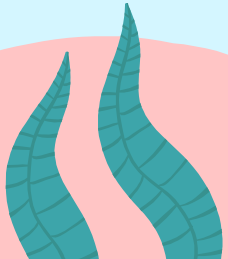
Empathize: Panel

- What is something **proud** or **unique** about your school?
- **AMLE Attributes: responsive, challenging, empowering, equitable & engaging...**
 - What is going well?
Please provide an example and/or story)
 - What is something that you see as an *opportunity*?



RMS Stakeholder Listening Campaign

MAKING SENSE OF DATA



Chinook

Students

Highland

Family Members

Tillicum

Odle

RMS Core Team
and Steering
Committee
Members

Thank
You!

School Staff

Tyee

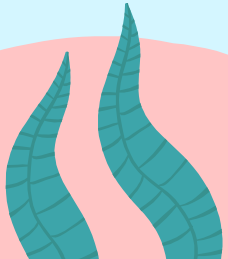
BSD Data & Assessment Dept.

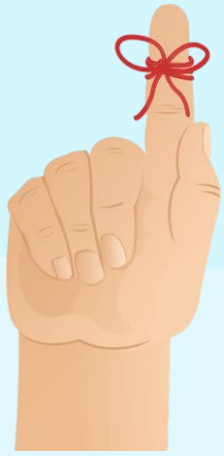
Guiding Questions:

What did we learn from the Listening Campaign data?

How does what we learned connect to our **RMS vision**?

How might we incorporate what we learned into our **ideations**?





Stakeholder feedback is important to deeply and collectively understand. It can help **guide our work to REIMAGINE middle school**—along with **research**, including **real-life examples** from other places, and **RMS Steering Committee members'** beliefs, expertise, and leadership.

October 2022 = First (not last) round of RMS stakeholder feedback

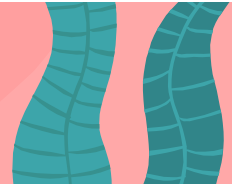
Two Open-Ended Questions for Stakeholders

What do you like about the current middle school experience?

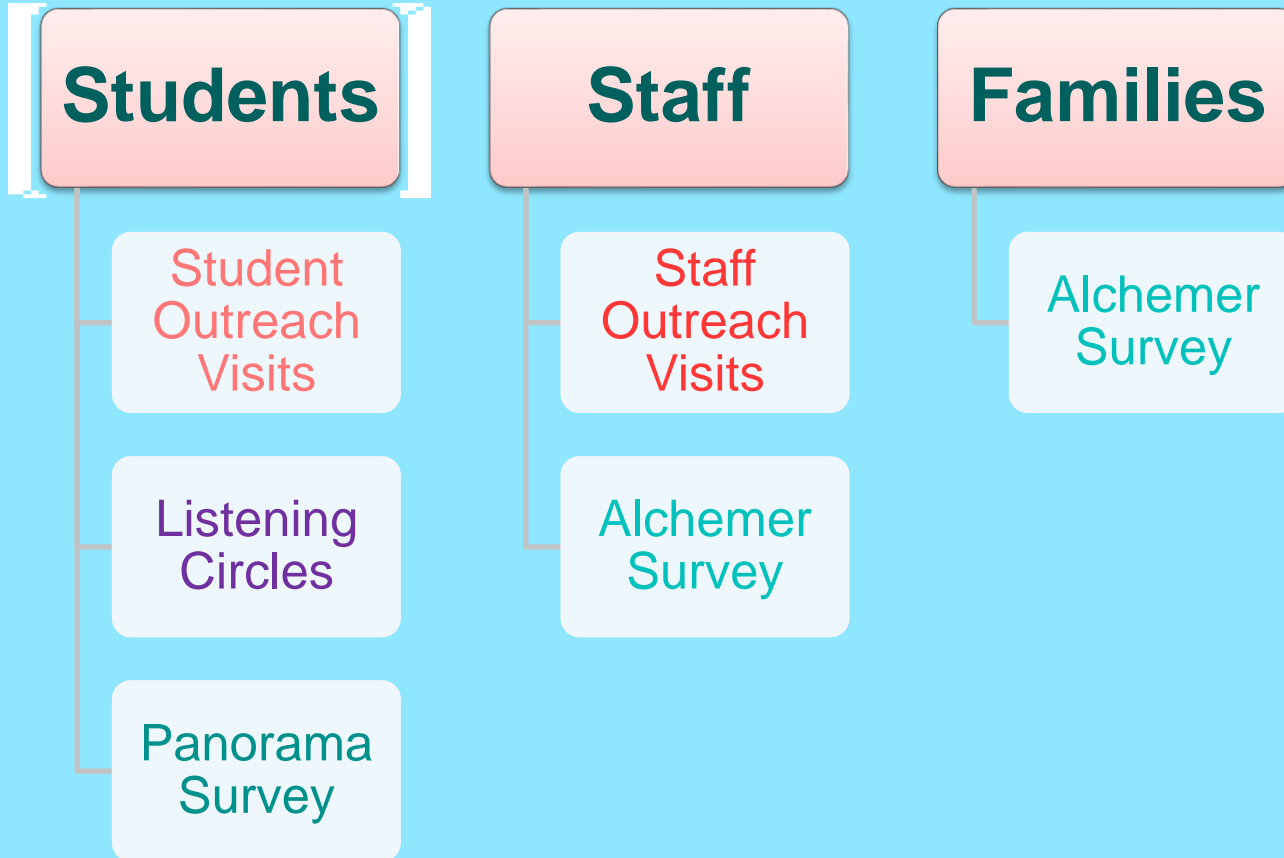
The *Reimagining Middle Schools* committee is working on creating a middle school experience that better meets the needs of our students. We want middle school to be a place where all students:

- Are deeply engaged in their learning
- Get a rigorous and relevant education
- Build skills in critical thinking, collaboration, problem-solving and creativity
- Feel a strong sense of belonging and well-being

What would you include in the design of your dream middle school? You can think big (like different structures for the school day) or small (like more transition time between periods). And if we are missing something in the list above, please add that as well.



RMS Listening Campaign Data Sources



Students

Panorama Survey

2,860 or **~73%** (of 3,894 Chinook, Highland, Odle, Tillicum, Tye) students responded to “design of your dream middle school” question
(range: 61% of Highland – 83% of Tillicum)



Listening Circles (6 total)

RMS Core Team members conducted 6 purposefully selected Listening Circles with:

- ❖ **Multilingual Learner** students at Highland
- ❖ **Special Education** students at Tillicum
- ❖ **Advanced Learning** students at Chinook
- ❖ **Black Student Union** at Odle
- ❖ **AVID class** at Odle
- ❖ **Leadership class** at Tye

In total, we interacted with **~80 students** (and **~7 educators**).

Student Outreach Visits (1 per school = 5 total)

RMS Core Team members visited their assigned middle school **to interact directly and naturally with students** during one day’s lunch periods (e.g., *Wendy attended Odle’s 3 lunch periods on 10/11/22*)

In total, we interacted with **~150 students**.

Staff

Alzheimer Survey

71 respondents identified as “I am a staff member at a BSD middle school.”

At least 10 respondents per middle school, with differing representation by school (e.g., 11 Highland respondents, 23 Tillicum respondents).

Staff Outreach Visits (1 per school = 5 total)

RMS Core Team members visited their assigned middle school to **interact directly and naturally with staff** via a drop-in format for a couple hours one day (e.g., *Anna stationed herself in Tillicum’s Staff Lounge from 11:00 AM-1:00 PM on 10/17/22*)

In total, we interacted **with ~54 middle school staff members** (8-16 staff members/school)



Families

Alchemer Survey

674 family member/caregiver respondents:

- 585 with a current BSD middle school student (*87% of family respondents*)
- 89 with current BSD high school student (9th grader at Bellevue, Interlake, Newport, Sammamish)

At least 70 respondents per middle school (e.g., Highland=73; Chinook=133; Tyee=139; Odle=148; Tillicum=179).



**Bellevue
School District**

Chinook, Highland, Odle, Tillicum, and Tyee Families and Staff:

We want to hear your ideas about middle school! Please take this anonymous, **four-question survey** to share your thoughts with our Reimagining Middle School (RMS) Steering Committee.

You can respond in English, Simplified Chinese, or Spanish. To change the language of the survey, click the arrow beside the word "English" (located in the upper right corner of this page). 您可以用英语、简体中文或西班牙语回复。要更改调查的语言，请单击“英语”一词旁边的箭头（位于本页右上角）。Puedes responder en inglés, chino simplificado o español. Para cambiar el idioma de la encuesta, haz clic en la flecha junto a la palabra "Inglés" (ubicada en la esquina superior derecha de esta página).

Thank you for sharing your ideas with us!

-Bellevue School District RMS Steering Committee

Questions or concerns about this survey? Please email *Melisa Macias* (BSD Director of Teaching and Learning for Middle Schools) at maciasm@bsd405.org or *Anna Van Windekens* (BSD Research Scientist) at vanwindekensa@bsd405.org.

Read more about our RMS work [here](#).

“Themes” Stations

<i>Station 1:</i> Student Outreach Visits	<i>Station 2:</i> Student Listening Circles	<i>Station 3:</i> Student Panorama Survey	<i>Station 4:</i> Staff Outreach Visits	<i>Station 5:</i> Staff Alzheimer Survey	<i>Station 6:</i> Family Alzheimer Survey
--	--	--	--	---	--

- **Let’s explore and make sense of the data we collected and analyzed!**
- You, as an individual, can start at whichever station you like, and move in whatever direction you like. (Avoid overcrowding any one station, so we can read the data.)
- We will spend **~6 minutes** at each of the 6 stations = 36 total minutes of data review and sensemaking. (The chime will tell us when to rotate to the next station.)
- **We want you to consume and start making sense of the themes.** To do this, you are welcome to use the **organizer** provided. Feel free to read and make sense silently and individually or verbally process with your neighbors. It’s up to you!

RMS Stakeholder Listening Campaign “Themes” Stations Organizer

- **What did we learn** from the Listening Campaign data?
- How does what we learned connect to our **RMS vision?** (“We will redesign the middle school experience to offer a **developmentally responsive, student-centered** education.”)
- How might we incorporate what we learned into our **ideations?**

<i>Station 1</i>	<i>Station 2</i>	<i>Station 3</i>
Student Outreach Visits	Student Listening Circles	Student Panorama Survey

<i>Station 4</i>	<i>Station 5</i>	<i>Station 6</i>
Staff Outreach Visits	Staff Alchemer Survey	Family Alchemer Survey

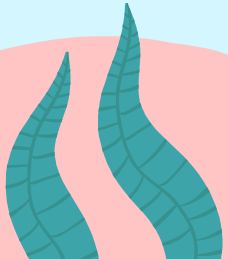
BIG IDEAS I'M TAKING AWAY:

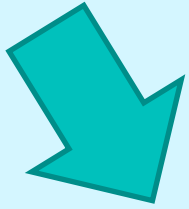
Guiding Questions:

What did we learn from the Listening Campaign data?

How does what we learned connect to our **RMS vision**?

How might we incorporate what we learned into our **ideations**?





Show Time!

Ideation Sprint #1

Brainstorming ideas!



Ideation Sprint #2

Add ideas from innovated MS



Shark Tank

Bring it all together!
Prepare for the five minutes pitch.



Show Time!

You are selected to give your pitch!



Ideation Sprint #1

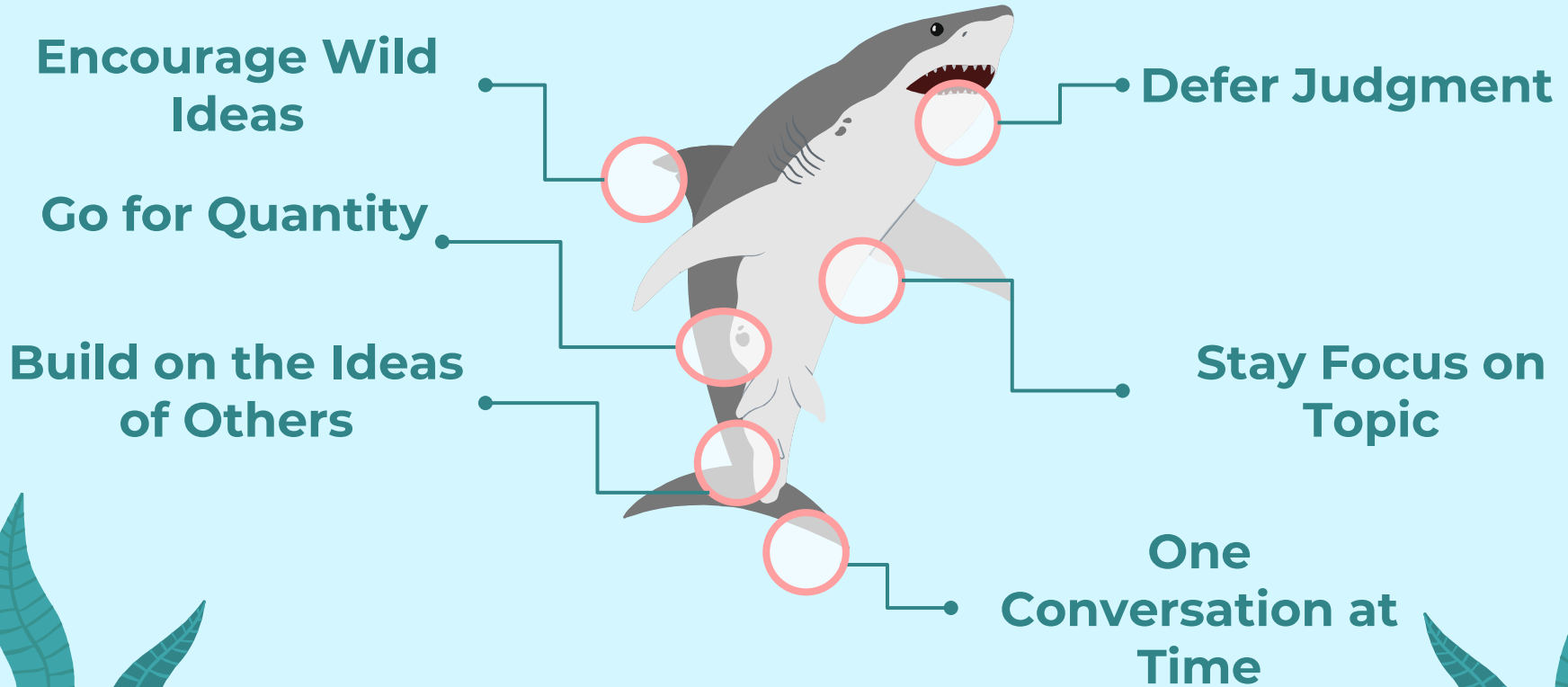
Video

We will learn by seeing how experts brainstorm.

IDEO, a leading design innovation company, is well known for their brainstorming methods. In this video, members of the IDEO demonstrate a typical brainstorm meeting.



Norms for Brainstorming **Ideas**



Brainstorming Ideas

How might we design a middle school experience that partners with the greater community to support/provide experiential, expeditionary, project/problem-based learning opportunities (solving real-world problems within the community?)

We will redesign the middle school experience to offer a developmentally responsive, student-centered education.

Social interactions & social-emotional needs

Bridge between elementary & high school

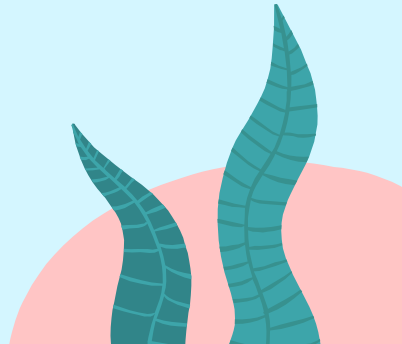
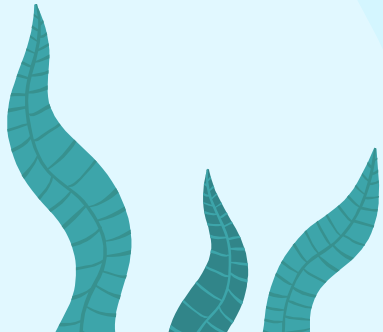
Meet students where they are

Learning environment & academic interactions

Rooted in relationships



Lunch Time!





The Serious Business of Play

Best Places for Shark Cage Diving



Learn Essential
Dive Theory



Choose a
Scuba Diving
Course



Dive In!



Dive
Debriefing



Finding Inspiration Outside Our Context

Best Innovated Middle Schools



Review the list of innovative schools



As a team decide how to review the list



Dive in!



Share new ideas!

Use your initial to select one school worth visiting



Finding Inspiration Outside Our Context



Show Time!

Ideation Sprint #1

Brainstorm ideas!



Ideation Sprint #2

Add ideas- innovative MS
Narrow-down Ideas



Shark Tank

Bring it all together!
Prepare for the five-
minute pitch.



Show Time!

You are selected to
give your pitch!



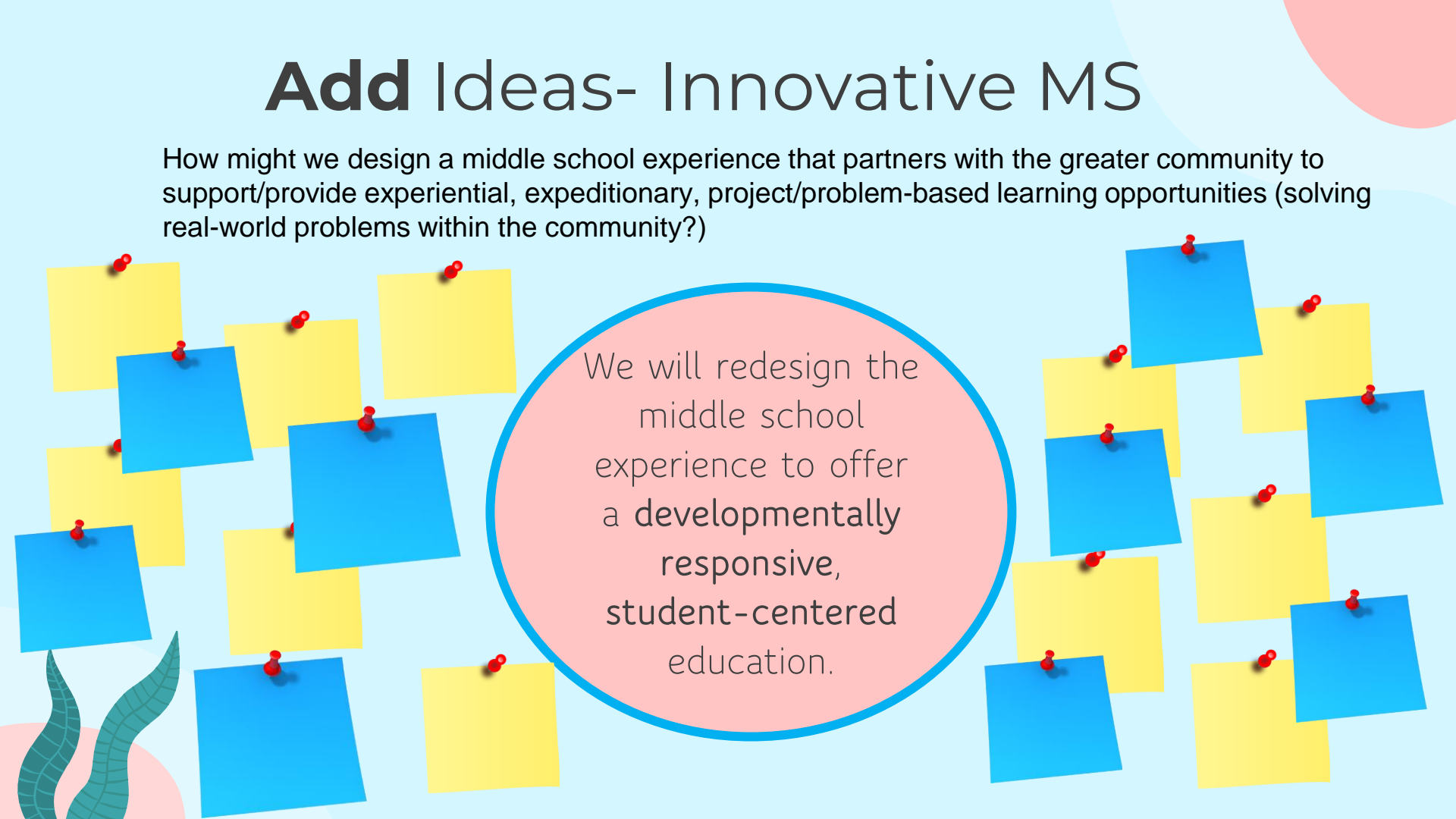
Tom Kelley of IDEO describe their approach for assessing the merit of ideas after brainstorming

[VIDEO](#)



Add Ideas- Innovative MS

How might we design a middle school experience that partners with the greater community to support/provide experiential, expeditionary, project/problem-based learning opportunities (solving real-world problems within the community?)



We will redesign the middle school experience to offer a developmentally responsive, student-centered education.

RMS Vision

Rooted in relationships

Learning environment & academic interactions

We will redesign the middle school experience to offer a developmentally responsive, student-centered education.

Social interactions & social-emotional needs

Meet students where they are

Bridge between elementary & high school

Narrow Down Ideas

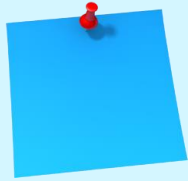
It's time to collect, categorize, refine and narrow down the best idea and solution

- Use the ideas generated in the ideation sprint #1
- Group the ideas to find common solutions
- Choose a number of votes (around 2–3 should do)
- Vote using stickers with our RMS vision in mind
- Rank to select ideas



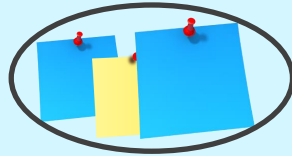
Stay true to your beliefs. This process allows every member to have an equal say in the shortlisted ideas.

Ideation Sprint #2



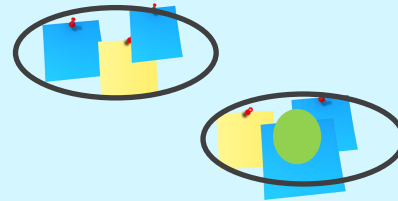
Add New Ideas

Use a different color to add new ideas based on innovated MS



Narrow Down Ideas

Group Ideas



Narrow Down Ideas

Vote using stickers
With our RMS Vision
in mind

1- Problem-based learning
2- SEL Build into the Schedule (20 min.)

Narrow Down Ideas

Rank to select ideas

We will redesign the middle school experience to offer a **developmentally responsive, student-centered** education.

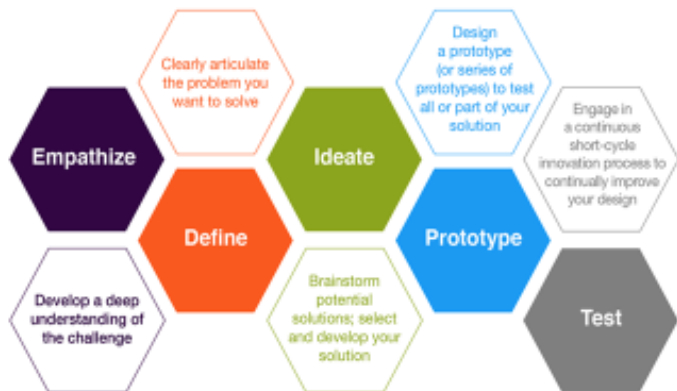
Reimagining Middle School Design Challenge in AVID Classrooms



Tyee & Odle Middle Schools

Your VOICE Matters

The Design Challenge:



In a small group, we will move through the Equity Design thinking process to the left to *design your dream middle school*. *This is your chance to be creative and innovative!*

Your design should consider....

How to increase student engagement, critical thinking and deeper learning

Ways to support opportunities for authentic collaboration and inspire innovation

Ideas for ensuring all students thrive or supporting student well-being

Anything else?

Tyee: 2 AVID classes

Grades 7 and 8

Theme: TIME

Shorter Wednesday X3

Earlier Lunch

Late Start Fridays

Longer Passing Period

Shorter School day X2

Theme: Academics

Homework graded on completion

Test Retakes

Less Repetitive Homework

Theme:

Building engagement and sense of belonging

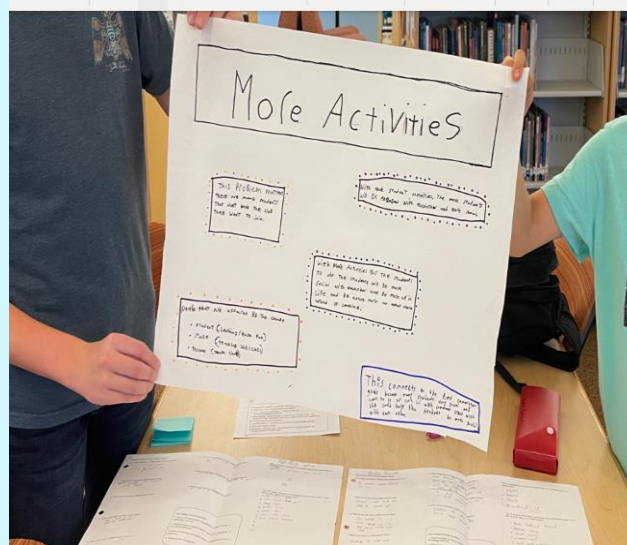
Field Trips

More After School Activities

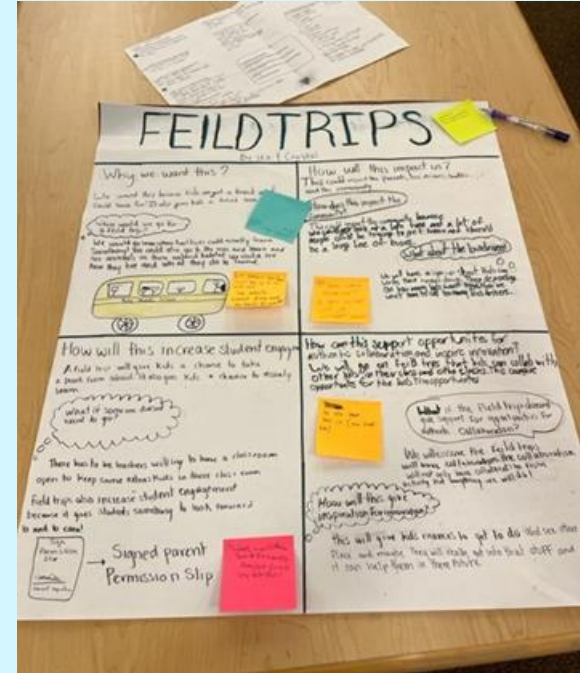
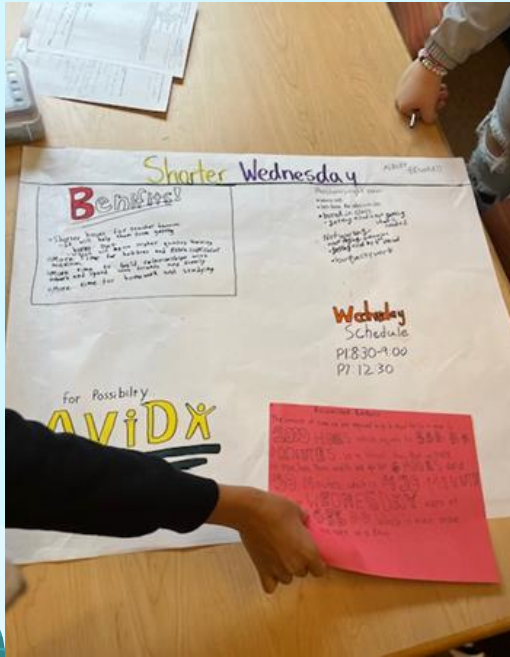
Vending Machines



Tyee AVID



Tyee AVID



Odle: AVID 8th Grade

Theme: Time and Food

Longer Lunch

Healthier Lunch Options

Theme: Academics

Study Hall

Longer Tutorial

Self-Paced learning and more choice

Theme: Sense of Belonging

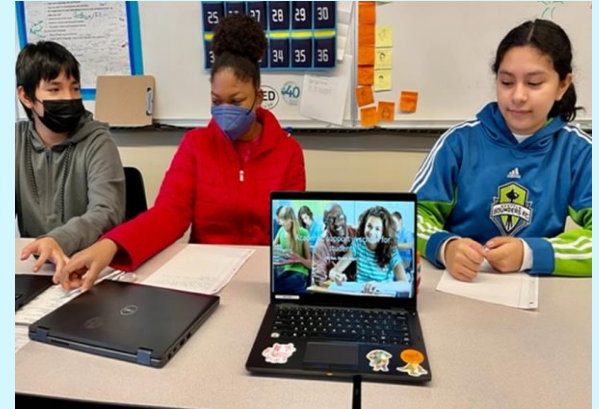
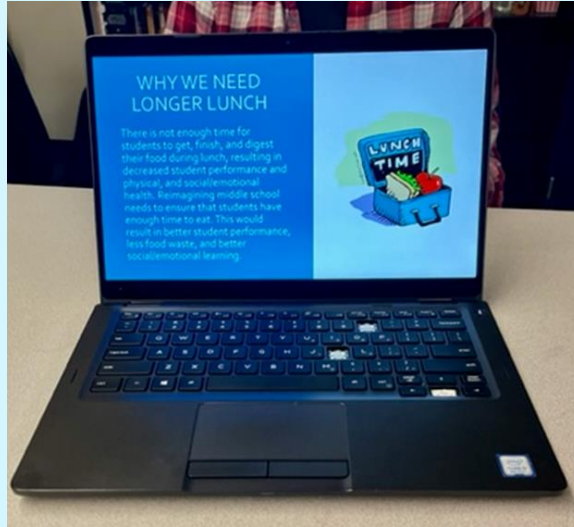
More after school sports options

Theme: Careers

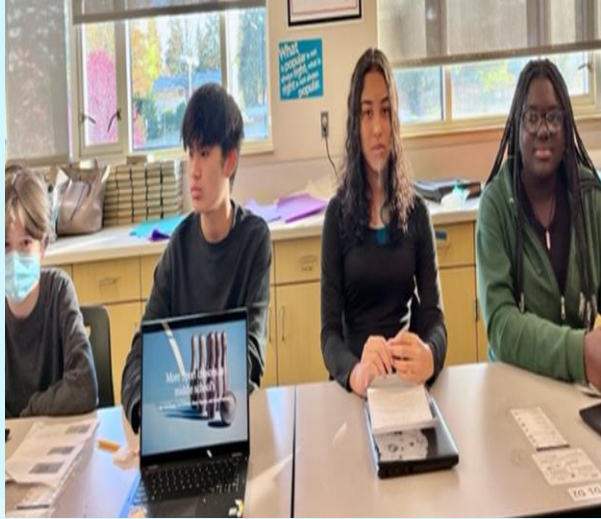
Embed more intentional time/resources
to learning about careers



Odle: AVID 8th Grade



Odle: AVID 8th Grade



Show Time!



Ideation Sprint #1

Brainstorming ideas!



Ideation Sprint #2

Add ideas from innovated MS



Shark Tank

Bring it all together!
Prepare for the five-minute pitch.



Show Time!

Give your pitch!



Bring it all together!

Ideas to include in your presentation:

- Elements or Categories
- Final Ideas (solutions)
- The “Why”
 - How is this design solving the problems/opportunities?
 - How is this design meeting students’ needs?
- Essential attributes (AMLE)

Bring it all together!					
Elements or Categories	Team #1	Team #2	Team #3	Team #4	Team #5
Use of Time		High-Quality Instruction & Student Engagement	Individual Attention/Sense of Belonging/Strong Relationships		
Final Ideas	<ul style="list-style-type: none"> <input type="checkbox"/> 7-period day <input type="checkbox"/> Block schedule (different types) <input type="checkbox"/> Flex time built into the schedule <input type="checkbox"/> Extended day <input type="checkbox"/> Extended year (summer school) <input type="checkbox"/> Year-round school calendar 	<ul style="list-style-type: none"> <input type="checkbox"/> Project-based learning <input type="checkbox"/> Problem-based learning <input type="checkbox"/> Interdisciplinary instruction <input type="checkbox"/> Teacher teaming <input type="checkbox"/> Student choice of electives <input type="checkbox"/> Internships <input type="checkbox"/> 8th grade capstone global competency project <input type="checkbox"/> Grading practices support student learning (focused on feedback) <input type="checkbox"/> Portfolios 	<ul style="list-style-type: none"> <input type="checkbox"/> Teacher teaming <input type="checkbox"/> Houses <input type="checkbox"/> Advocates <input type="checkbox"/> Advisories <input type="checkbox"/> Flex time built into the schedule <input type="checkbox"/> Tutoring (built into school day or after school) <input type="checkbox"/> Looping 		
The “Why”	<ul style="list-style-type: none"> • Sufficient blocks of uninterrupted learning time • Vary time based on student need • At least 90 min/week of collaborative planning time for teachers 	<ul style="list-style-type: none"> • Students have some agency and choice in what they are learning • Instructional modes are designed to be engaging and help students see the relevance in what they are learning • SEL instruction is incorporated into every classroom 	<ul style="list-style-type: none"> • Teachers <u>get to</u> know their students as individuals and individualize instruction to their needs • Students feel like they are part of a known community (aren't interacting with 160 different people every day) • Strong positive school climate for both students and staff • The team-teaching approach allows for more interaction between teachers and students. 		
Essential Attributes	<ul style="list-style-type: none"> • Responsive • Challenging • Empowering • Equitable • Engage 	<ul style="list-style-type: none"> ✓ Equitable ✓ Responsive ✓ Empowering ✓ Engaging 	<ul style="list-style-type: none"> ✓ Equitable ✓ Responsive ✓ Empowering 		

Examples

	Team #1	Team #2	Team #3	Te
Elements or Categories	Use of Time	High-Quality Instruction & Student Engagement	Individual Attention/Sense of Belonging/Strong Relationships	
Final Ideas	<ul style="list-style-type: none"> <input type="checkbox"/> 7-period day <input type="checkbox"/> Block schedule (different types) <input type="checkbox"/> Flex time built into the schedule 	<ul style="list-style-type: none"> <input type="checkbox"/> Problem-based learning <input type="checkbox"/> Interdisciplinary instruction <input type="checkbox"/> Teacher teaming <input type="checkbox"/> Student choice of electives <input type="checkbox"/> Internships <input type="checkbox"/> 8th grade capstone global competency project <input type="checkbox"/> Portfolios 	<ul style="list-style-type: none"> <input type="checkbox"/> Teacher teaming <input type="checkbox"/> Houses <input type="checkbox"/> Advocates <input type="checkbox"/> Advisories <input type="checkbox"/> Flex time built into the schedule <input type="checkbox"/> Tutoring (built into school day or after school) <input type="checkbox"/> Looping 	
The "Why"	<ul style="list-style-type: none"> • Sufficient blocks of uninterrupted learning time • Vary time based on student need • At least 90 min/week of collaborative planning time for teachers 	<ul style="list-style-type: none"> • Students have some agency and choice in what they are learning • Instructional modes are designed to be engaging and help students see the relevance in what they are learning • SEL instruction is incorporated into every classroom 	<ul style="list-style-type: none"> • Teachers <u>are able to</u> know their students as individuals and individualize instruction to their needs • Students feel like they are part of a known community (aren't interacting with 160 different people every day) • Strong positive school climate for both students and staff • The team-teaching approach allows for more interaction between teachers and students. 	
Essential Attributes	<ul style="list-style-type: none"> ✓ Equitable ✓ Responsive 	<ul style="list-style-type: none"> ✓ Equitable ✓ Responsive ✓ Empowering ✓ Engaging 	<ul style="list-style-type: none"> ✓ Equitable ✓ Responsive ✓ Empowering 	

Possible Show Time Examples



A Day in a Life

A narrative of a student's day

Thursday		
1	8:10	9:40
3	9:45	11:20
Launch	11:20	11:50
6	11:55	1:30
7	1:35	3:00
Tutorial	3:05	3:40

Schedule

Design a schedule in a form of table



List

Prioritized List of Recommendations



Video

Sharing the Top Recommendations



Diagram

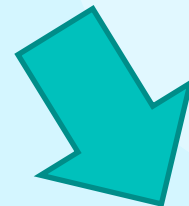
Illustration (s) of recommendations



Your Choice

Be yourself!

Show Time!



Ideation Sprint #1

Brainstorming ideas!



Ideation Sprint #2

Add ideas from innovated MS



Shark Tank

Bring it all together!
Prepare for the five-minute pitch.



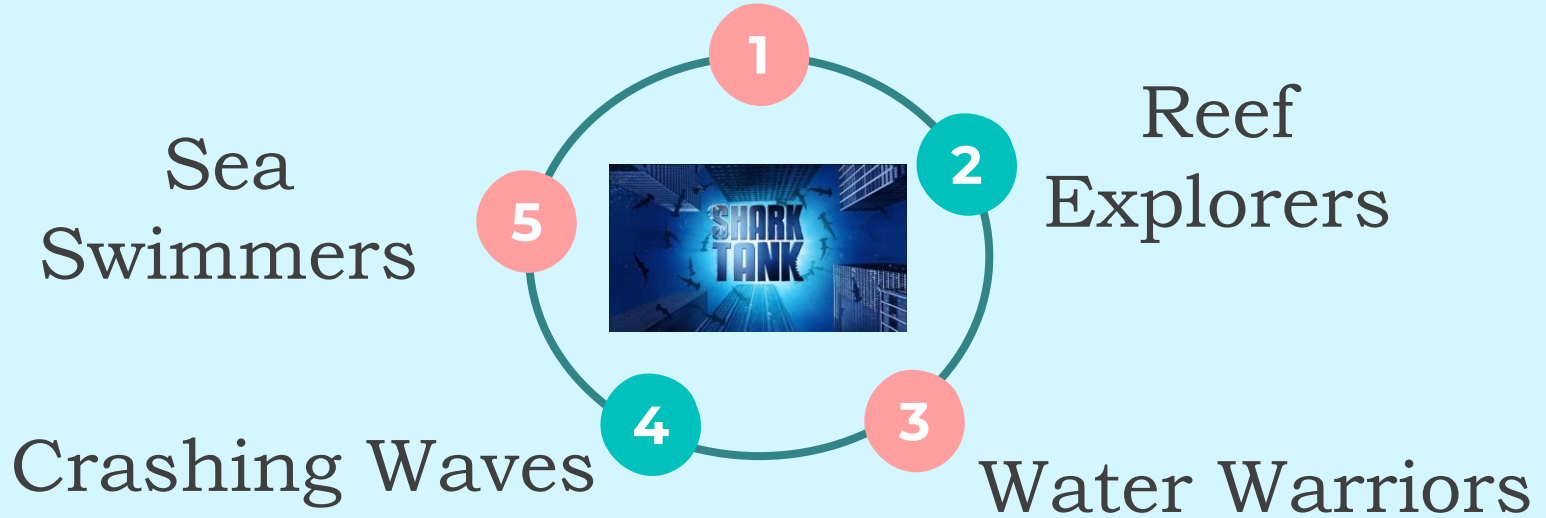
Show Time!

Give your pitch!



Show Time!

We Go Deep



Dorsal Fin

Used for stability, this keeps the shark upright and on course.

Caudal Fin

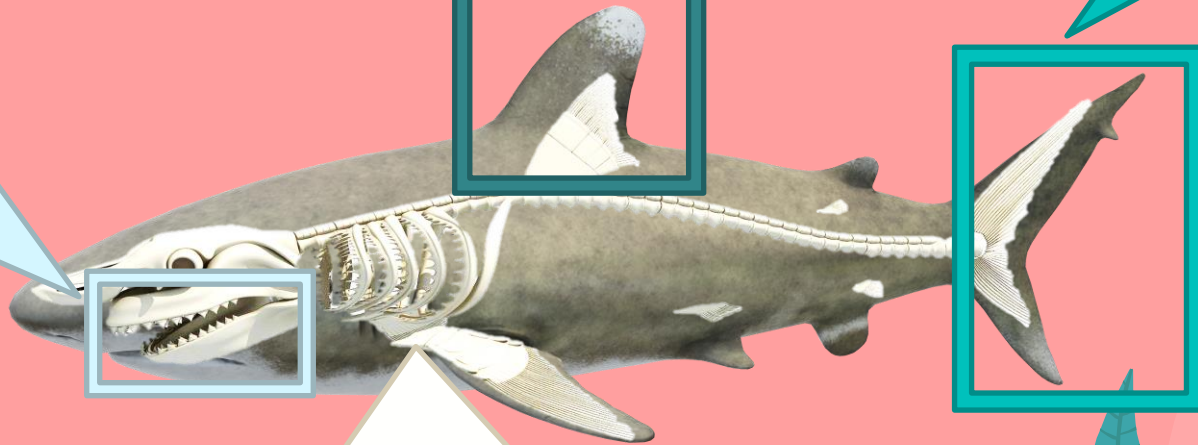
The driving force; moves the shark forward.

Teeth

For defense and predation. The longest lasting part of the shark.

Cartilage Skeleton

Light, helping sharks stay afloat and extremely flexible, enabling the shark to quickly turn in response to stimulus.



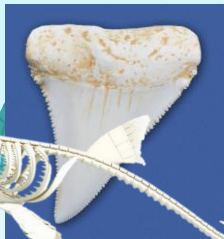
Take a moment to think and share...



What is driving or powering you through this work?



What is something that you have seen keeping you/us balanced, upright, or on course?



What are some exciting ways we are looking at bending or breaking?

Thank You!

What is coming up: We IDEATE

•**Next Meeting**- December 8th Chinook Middle School

Reminders:

- Provide Feedback
- Sign in

CREDITS: This presentation template was created by **Slidesgo**, including icons by **Flaticon**, and infographics & images by **Freepik**

Do you have questions, comments or concerns?

Reach out to us at RMS@bsd405.org