

HUMANITREE

BECOME A LIFELONG LEARNER



**Middle School
High School**

2024



www.humanitree.edu.mx





Table of contents

Our History	01
Our Mission/Vision	03
Our Values	04
Our Location	05
Our Logo	06
Humanitree in Numbers	09
Our Faculty	10
Humanitree Kitchen	12
Technology	14
Welcome to Hive	16
Welcome to Flight	20
Alumni	27
Wellbeing Initiatives	28
Scholarships	29
Admission Process	30



OUR HISTORY

In 2011, leading philanthropists and entrepreneurs in Mexico, Ricardo Salinas Pliego and his wife, María Laura Medina de Salinas, introduced a groundbreaking educational concept called HUMANITREE.

Our journey commenced in our Sierra Madre campus in Lomas de Chapultepec with an initial enrollment of 40 students.

Today, we proudly serve a thriving community of over 500 students, and our commitment to growth leads us to explore new horizons and opportunities with the opening of our brand-new Middle and High School campus.

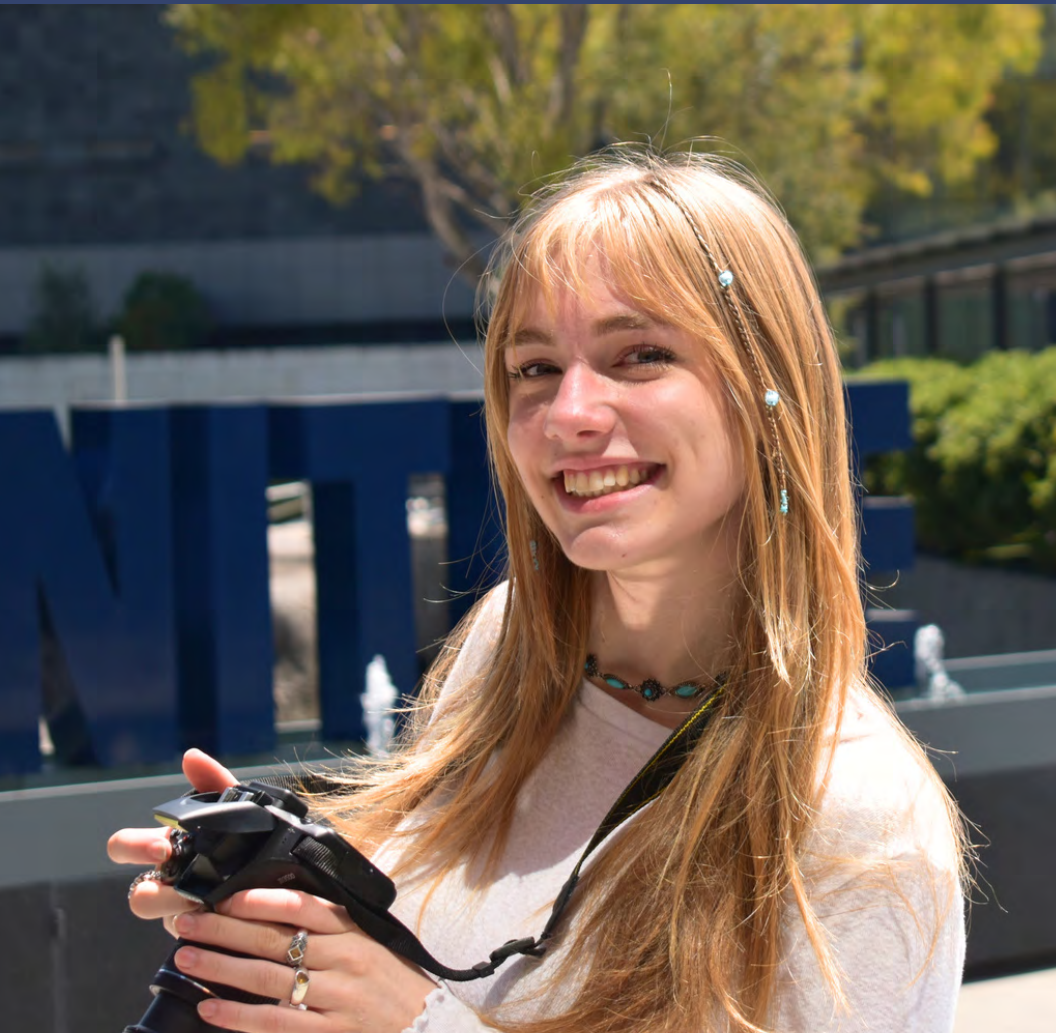




**To learn more about our Kinder and Primary
School campus, scan the QR, or click [HERE](#)**

OUR MISSION

Our mission is that children have fun learning and learn whilst having fun in the school of life.



OUR VISION

To ensure that each student experiences life as an incredible adventure and as an ongoing learning journey; fulfilling their potential with the skills and attitudes to make the right choices and becoming compassionate and responsible global citizens.

OUR VALUES

Honesty

Generosity

Self Esteem

**Effort,
Perseverance
and
Achievement**

Gratitude

Respect

**Courage
and
Independence**

**Self
Confidence**

Teamwork

**Curiosity
and
Learning**

Excellence

Responsibility

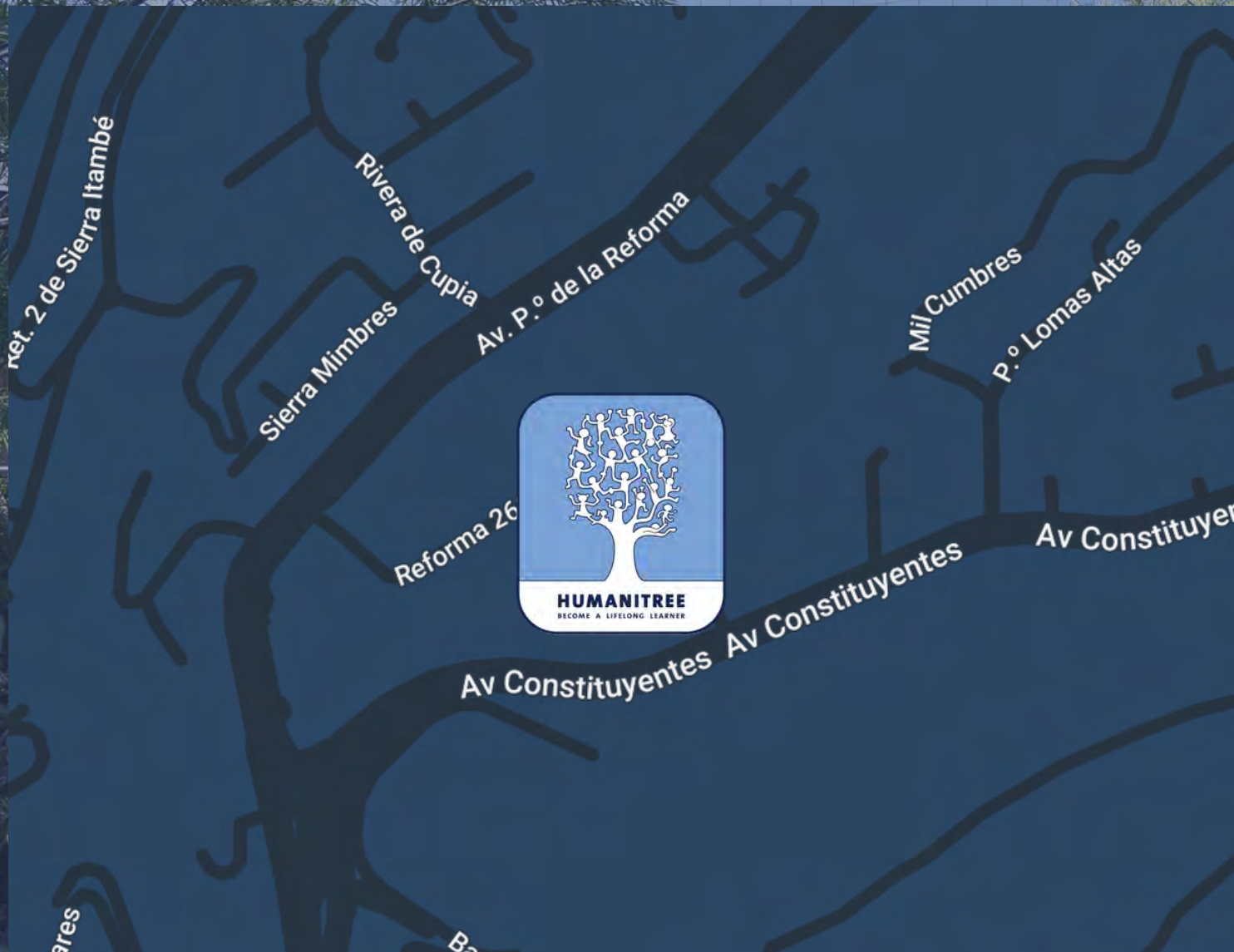
**Creativity
and
Imagination**

Beauty

**Ability to
Communicate**

Freedom

OUR LOCATION



Humanitree Hive and Flight Campus
Av. Constituyentes 1100, Lomas Altas
Miguel Hidalgo, 11950 Ciudad de México, CDMX

OUR LOGO

The tree symbolizes mankind's growth and development. It represents the essence of Earth and nature; it is the image of life and its connections, its links and relationships. The tree's branches rise towards the sky gathering light; its roots go deep into the earth searching for water. It is the home and shelter for many species.

HUMANITREE symbolizes the expansion of humanity's potential, the development of our knowledge, understanding and awareness. Humanitree represents the shelter and care that we give to all of our students. Children's natural abilities, talents and interests will form the root of the **HUMANITREE** on which teaching and learning will be based.



The first teaching and learning experiences took place under a tree. It is the place where humans have naturally gathered to share discoveries, tell stories and learn from the wise.



Humanitree offers a unique and innovative program that stands out for its state-of-the-art facilities, cutting-edge technology, and commitment to providing students with a 21st Century education.

Behind the breathtaking design of our new campus stands a team of visionaries, pioneers in educational design. Rosan Bosch's innovative spirit and dedication to reimagining educational spaces have transformed our campus into a hub of inspiration and innovation.



Click [HERE](#) to learn more about Rosan Bosch

HUMANITREE IN NUMBERS

Students in
Hive and Flight

205

Maximum
Classroom Size

16

Student to
Teacher Ratio

4:1

IB Average
Score

31

University
Admission Rate

100%

Foreign
Student Body

10%





OUR FACULTY

In collaborative settings, our dedicated instructors engage with each student in personalized learning experiences.



- **55% of Teachers hold a Masters Degree or Higher**
- **15.5 years average teaching experience**
- **6.5 years IB experience**
- **Internationally experienced, and highly skilled staff.**
- **52% UK / 14% US / 27% Mexico / 7% Other Faculty**



Our spacious outdoor amenities offer a breath of fresh air and opportunities for physical fitness and team building.



HUMANITREE KITCHEN

At Humanitree we have a professional grade kitchen and full time catering staff. Healthy balanced meals and snacks are provided from Monday to Thursday. We aim to help students make healthy choices and enjoy the social interaction that takes place during lunchtime.

We are able to cater to common allergies or dietary requirements, however, we are not set up to cater for more detailed specific, dietary needs, diets or regimens.





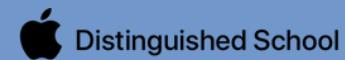
Through real-life experiences gained from field trips and guest speakers, students at Humanitree gain a deeper understanding of the world around them and develop skills that prepare them for success in the 21st century.



TECHNOLOGY

Technology plays a central role in enhancing education. The school has a VR Studio, Professional Green Room, Editing and Podcasting suites and Cinema.

Humanitree is one of the 400 schools in the world recognized as an Apple Distinguished School, which gives students the opportunity to use Apple products in a creative and innovative way whilst engaging in subject content.



Recognized by Apple as a distinguished school for continuous innovation in learning, teaching, and the school environment.





Our modern learning spaces have been carefully crafted to ignite curiosity and foster creativity. With flexible seating arrangements, and vibrant decor, every corner becomes a gateway to exploration.

WELCOME TO HIVE



GRADE EQUIVALENT: 6-9 US, 7-10 UK, 6° Prim - 3° Sec MEX

Hive is the middle school section of Humanitree. We strive to inspire young people through new paradigms in education that stretch and challenge students along the journey to become lifelong learners. Students are part of an established learning community that leads to both high academic outcomes and strong personal qualities.

We develop a growth mindset approach to learning, supporting students as they become valued members of the local community and contributors to both national and international stages.

Hive prepares students for Flight (High School) giving them the very best opportunities for success in an ever-changing and fluid world. All our courses in Hive are academic, high quality and combine the best of both innovative and traditional curriculums.





HIVE SUBJECT LIST

Hive 1- 3 Subject List

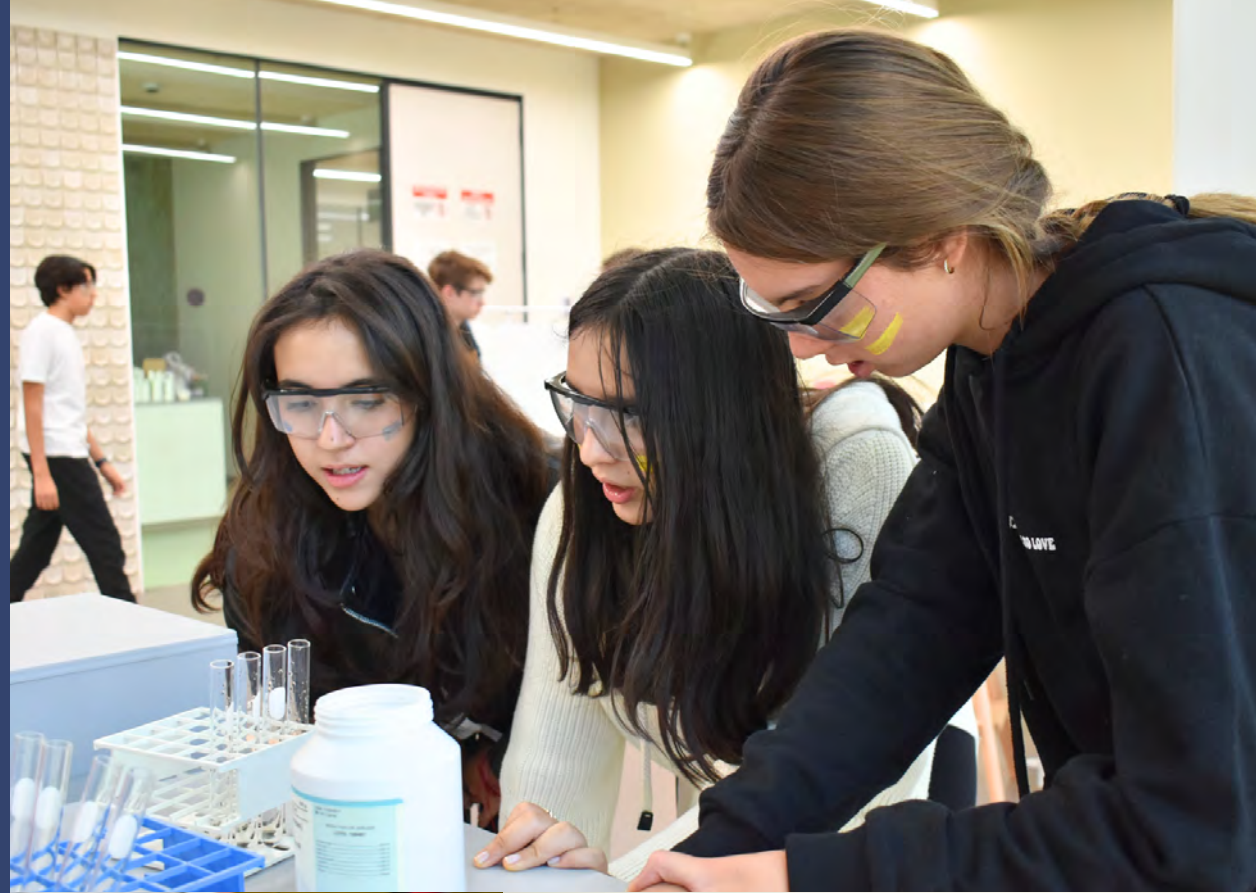
English
Maths
Spanish
Science
Computer Science
Design Technology
Mexican History
Humanities
PE
Art
Drama
Music

Hive 4 Core Subjects

English
Maths
Spanish
Science
Mexican History
Humanities
ICT
PE

Hive 4 Elective Subjects

Advanced Math
Music
Business Studies
Art
French
Design Technology
Sports Science
Sociology/Psychology
Computer Science
Drama



WELCOME TO FLIGHT

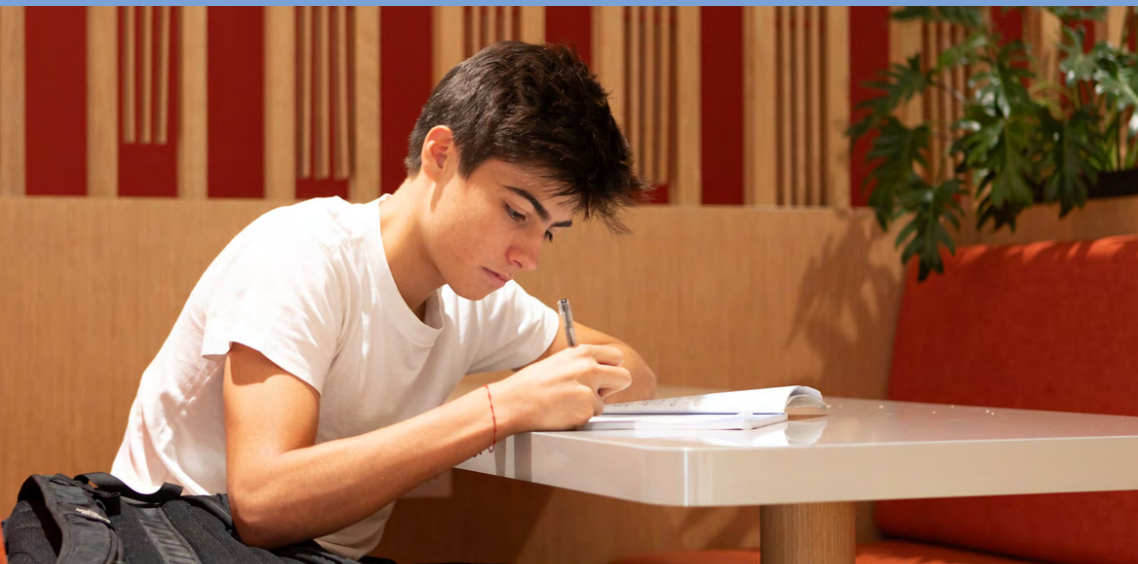


GRADE EQUIVALENT: 10-12 US, 11-13 UK, 1°- 3° Prepa MEX

Flight is the High School section of Humanitree. The academic demands of school increase as students embrace the responsibility of becoming a lifelong learner, with the option of choosing between two different program options available to all students.

With life beyond Humanitree growing ever closer, our school values become all the more important and students recognize their personal responsibilities. As they continue to develop courage and independence, they make decisions with determination, overcome problems and accept that what they say should be consistent with what they do.

We provide knowledge, skills and understanding that have high currency in both further and higher education as well as with the wider business and cultural community at a national and international level.



**Humanitree offers
two different academic
pathway options in
High School.**

INTERNATIONAL BACCALAUREATE

Humanitree is an authorised IB world school and offers the IB Diploma Programme to all Flight students.

The IB Diploma Programme is a comprehensive course of studies designed to be undertaken during the final two years of High School. It is recognised as one of the best preparations for university and helps students to develop valuable life skills.

Students at Humanitree will be able to choose to complete the full Diploma Programme, which involves taking 6 subject courses as well as Theory of Knowledge, completing an Extended Essay and meeting the CAS requirements. Students graduate from High School with the IB and SEP diploma.





HUMANITREE HIGH SCHOOL DIPLOMA

The Humanitree High School Diploma is our new educational program that offers a unique and customised learning experience for students. Students take three core subjects - English, Spanish and Maths plus four electives each semester. Humanitree offers a wide range of subjects, including Fashion Design, Architecture and Music Production, students can explore their passions while gaining valuable skills for their future studies and careers. The semester-by-semester elective approach ensures a comprehensive education that challenges and rewards students. Upon graduation, students receive a globally recognized High School Diploma that opens doors to universities worldwide, providing them with endless opportunities for their future endeavours.



IB DIPLOMA OPTION

6 Compulsory Subjects:

English, Spanish, Social Science,
Science, Maths, Art or Elective

3 Core Components:

Extended Essay
CAS
T.O.K

SUBJECT LIST

IB ENGLISH A: LANGUAGE & LITERATURE HL/SL

IB SPANISH: LANGUAGE & LITERATURE HL/SL

IB SPANISH B

IB FRENCH

IB MATHS AA

IB MATHS AI

IB VISUAL ARTS

IB MUSIC

IB CHEMISTRY

IB PHYSICS

IB BIOLOGY

IB COMPUTER SCIENCE

IB DESIGN TECHNOLOGY

IB SPORTS SCIENCE

IB BUSINESS MANAGEMENT HL

IB PSYCHOLOGY SL

IB ECONOMICS SL

IB THEORY OF KNOWLEDGE

HUMANITREE HIGH SCHOOL DIPLOMA OPTION

SUBJECT LIST

ENGLISH LANGUAGE
SPANISH LANGUAGE
FRENCH LANGUAGE
MATHS HS DIPLOMA
ART & DESIGN
MUSIC PRODUCTION
INSTRUMENTAL
FORENSICS
PHYSICS
MARKETING
HUMAN RESOURCES
FINANCE
HOSPITALITY MANAGEMENT
INTERNSHIPS
ENTREPRENEURSHIP

PSYCHOLOGY
FASHION DESIGN
ARCHITECTURE
STACKABLE FURNITURE
ICT IN BUSINESS
SOCIAL MEDIA IN BUSINESS
SPORTS & FITNESS
DRAMA & THEATRE
ECONOMICS

3 Compulsory Subjects:

English, Spanish, Maths

4 Electives Every Semester:

***Must choose at least 1
semester of science per year**

2 Core Components:

Ted Talk
Service Action Trip

ENTREPRENEURIAL/ INTERNSHIP PROGRAM

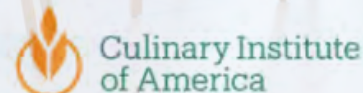
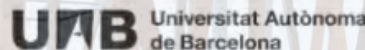
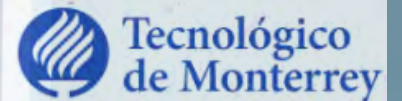
We believe in providing a well-rounded education that combines academic learning with real-world application. Our new entrepreneurial program and weekly internships enable students to gain practical experience and develop important skills for the future. The entrepreneurial program offers students an opportunity to learn about business development, marketing, and financial management.

Meanwhile, our weekly internship option allow students to gain hands-on experience in various industries and apply their classroom learning in real-world settings. We believe that combining academic learning with practical experience is an excellent way to prepare our students for success at university and beyond.



ALUMNI

Our personalized learning pathways and outstanding university counsellor guidance leads to our alumni gaining acceptance to a broad range of universities upon graduation from Humanitree, including:



WELLBEING INITIATIVES

Our Wellbeing Initiatives focus on cultivating resilience, empathy, and self-awareness, providing a space for students to express their thoughts and concerns.

House Program

- **Activities each month**
- **Vertical age group design**
- **Leadership opportunities**

Friday Tutor Time

- **Connection**
- **Social and emotional learning**
- **Humanitree values**

Student Wellbeing Ambassadors

- **Advocate for wellbeing**
- **Solving real wellbeing issues**





SCHOLARSHIPS

Humanitree's commitment to attracting and retaining the very best students means scholarships are awarded to outstanding students in areas such as academic ability, artistic, technological, entrepreneurial and sporting prowess.

ADMISSION PROCESS

1
Complete
Online
Admission
Registration

2
Attend an
Open House
Event/Campus
Tour

3
Provide
required
documentation

4
Selected
Candidates
complete
evaluation

5
Family
interview

6
Decision letter





**Start the
process by
clicking**

HERE





CONTACT US

**Constituyentes 1100
Lomas Altas
Miguel Hidalgo
Ciudad de México, México
11950**

+52 55 8620 000

admissions@humanitree.edu.mx

www.humanitree.edu.mx