

LEA Name : Mifflinburg Area SD
Address : 178 Maple St
Mifflinburg , PA 17844

County : Union
AUN Number : 116605003
LEA Type : SD

Annual Financial Report Accuracy Certification Statement

For Fiscal Year Ending

6/30/2016

Pennsylvania Department of Education

&

Office of Comptroller Operations

PDE-2056: Intermediate Unit

PDE-2057: School District, AVTS/CTC, Charter School,
and Special Program Jointure

CERTIFICATION: By signing this page I agree that the electronic data submitted is a complete and accurate statement of the financial operations and status of the local education agency for the fiscal year. It has been prepared in accordance with generally accepted accounting principles and established Commonwealth of PA reporting guidelines.

Chief School Administrator Signature

Date

Board Secretary Signature

Date

Thomas Caruso

Contact Person

tcaruso@mifflinburg.org

Contact Person E-mail Address

(570)966-8200 Ext :8207

Contact Person Telephone Number

(570)966-8210

Contact Person Fax Number

Audit Certification
Annual Financial Report:
For Fiscal Year Ending **6/30/2016**
(Pursuant to PA School Code Section 218(b))

LEA Name : Mifflinburg Area SD
AUN Number : 116605003
County : Union

Audit Certification Due: 12/31/2016

This certification is applicable to:

- ☐ **Orig. Annual Financial Report submitted to
Comptroller Operations:** _____
Date
- ☐ **Annual Financial Report revisions submitted on:** _____
Date

Auditing Firm:

Auditor Contact Name:

Auditor Phone:

Auditor E-mail:

CERTIFICATION: By signing this page I agree that the financial statements of the school have been properly audited as noted above pursuant to Article XXIV, and in the auditor's professional opinion, the Annual Financial Report (PDE-2057) submitted on the date referenced is materially consistent with the audited financial statements.

Chief School Administrator

Board Secretary

Signature

Date

Signature

Date

Thomas Caruso

Contact Person

tcaruso@mifflinburg.org

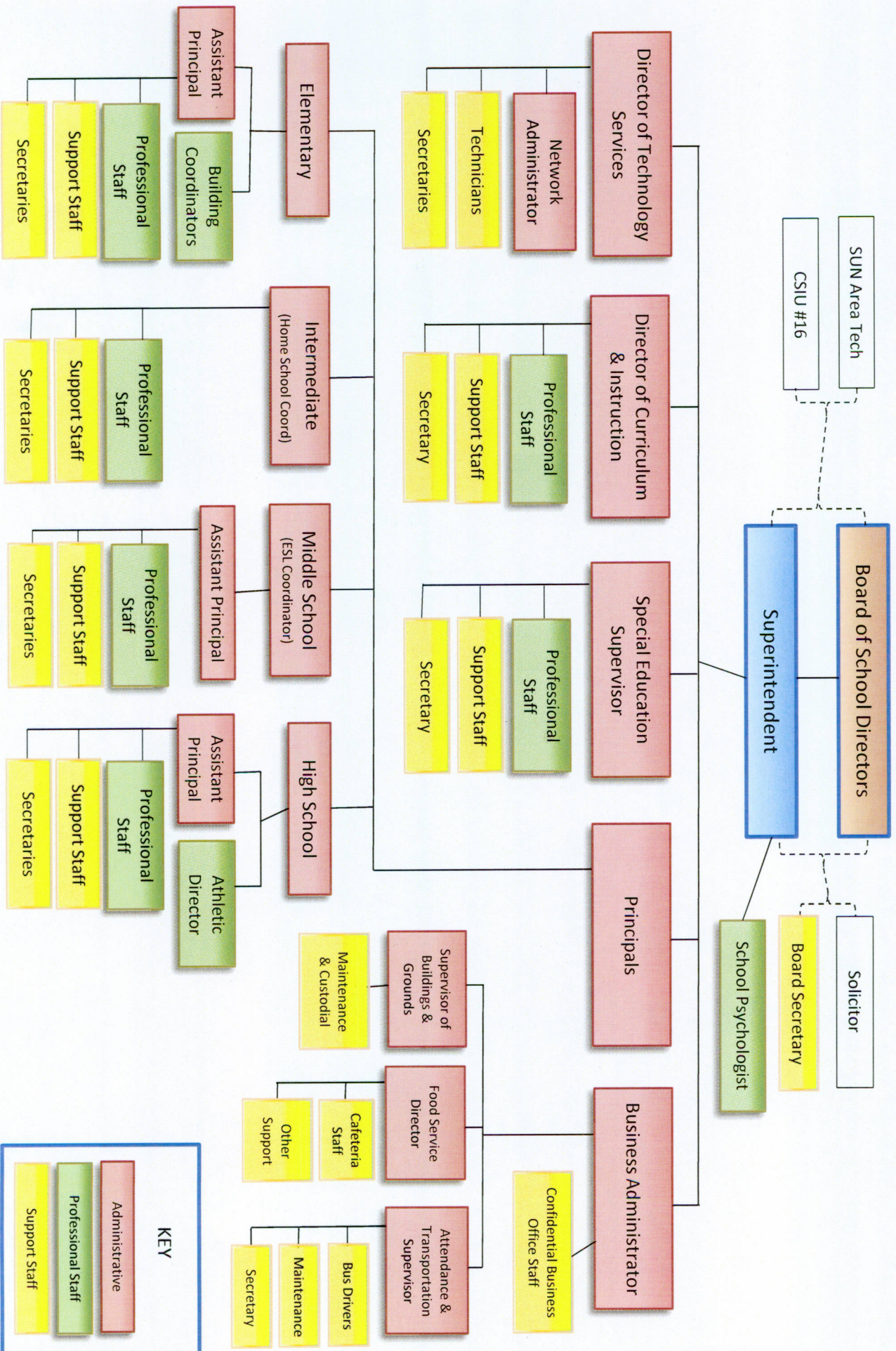
Contact Person E-mail Address

(570)966-8200 Ext :8207

Contact Person Telephone Number

(570)966-8210

Contact Person Fax Number



<u>Val Number</u>	<u>Description</u>	<u>Justification</u>
30501	Revenue Detail: AFR amount must equal or exceed PDE FAI System amount. 7311, AFR Rev Detail: 875481.61 7311, PDE FAI System: \$922,297.89	PDE FAI System number incorrect compared to Mifflinburg FAI; \$821,332.88 (\$54,148.73 deductions for charter schools)
30530	Revenue Detail: The PDE FAI System reflects payments for Revenue 7320 therefore the AFR amount reported in General Fund Revenue code 7320 must be greater than zero.	Recorded \$45,794.05 as receivable 6/30/2015
50450	SESS - 2350 Legal and Accounting Services: SESS Schedule amounts for Special Education vary from prior year by 40% or more. Correct the data or enter a justification. SESS Schedule 2350: \$1,874.18 Prior Year SESS Schedule 2350: \$4,309.00	Less legal Special Ed costs compared to previous year

LEA : 116605003 Mifflinburg Area SD

Printed 11/8/2016 1:26:13 PM

Amounts Expressed in Whole Dollars		<u>General Fund</u> <u>(10)</u>	<u>Public Purpose Trust</u> <u>(27)</u>	<u>Other Compt Approved</u> <u>(28)</u>	<u>Athletic / Activity</u> <u>(29)</u>	<u>Capital Reserve (690.</u> <u>1850)</u> <u>(31)</u>
Assets And Deferred Outflows Of Resources						
Assets						
0100	Cash and Cash Equivalents	7,627,612				
0110	Investments					
0120	Taxes Receivable	425,047				
0130	Due From Other Funds					
0141	Due From Other Governments	678,766				
0142	State Revenue Receivable					
0143	Federal Revenue Receivable					
0145	Other Intergovernmental Revenue Receivable					
0146	Due from Primary Government					
0147	Due from Component Unit					
0150	Other Receivables	192,482				
0170	Inventories	40,000				
0180	Prepaid Expenses (Expenditures)					
0190	Other Current Assets					
Total Assets		\$8,963,907				
0910	Deferred Outflows of Resources					
Total Assets And Deferred Outflows Of Resources		\$8,963,907				

LEA : 116605003 Mifflinburg Area SD

Printed 11/8/2016 1:26:13 PM

Amounts Expressed in Whole Dollars		<u>Capital Reserve (1431</u>	<u>Other Capital Projects</u>	<u>Debt Service</u>	<u>Permanent</u>	<u>Total Governmental</u>
		<u>(32)</u>	<u>Fund</u>	<u>(40)</u>	<u>(90)</u>	<u>Funds</u>
Assets And Deferred Outflows Of Resources						
Assets						
0100	Cash and Cash Equivalents	724,774				8,352,386
0110	Investments					
0120	Taxes Receivable					425,047
0130	Due From Other Funds					
0141	Due From Other Governments					678,766
0142	State Revenue Receivable					
0143	Federal Revenue Receivable					
0145	Other Intergovernmental Revenue Receivable					
0146	Due from Primary Government					
0147	Due from Component Unit					
0150	Other Receivables					192,482
0170	Inventories					40,000
0180	Prepaid Expenses (Expenditures)					
0190	Other Current Assets					
Total Assets		\$724,774				\$9,688,681
0910	Deferred Outflows of Resources					
Total Assets And Deferred Outflows Of Resources		\$724,774				\$9,688,681

LEA : 116605003 Mifflinburg Area SD

Printed 11/8/2016 1:26:13 PM

Amounts Expressed in Whole Dollars		<u>General Fund</u> <u>(10)</u>	<u>Public Purpose Trust</u> <u>(27)</u>	<u>Other Compt Approved</u> <u>(28)</u>	<u>Athletic / Activity</u> <u>(29)</u>	<u>Capital Reserve (690.</u> <u>1850)</u> <u>(31)</u>
Liabilities And Deferred Inflows Of Resources And Fund Balances						
Liabilities						
0400	Due to Other Funds	9,668				
0411	Due to Other Governments					
0412	Due to Primary Government					
0413	Due to Component Unit					
0420	Accounts Payable	154,849				
0430	Contracts Payable					
0440	Current Portion of Long-Term Debt					
0450	Short-Term Payables					
0461	Accrued Salaries and Benefits	2,459,984				
0462	Payroll Deductions and Withholding	62,682				
0480	Unearned Revenues					
0490	Other Current Liabilities					
Total Liabilities		\$2,687,183				
0950	Deferred Inflows of Resources	425,047				
Fund Balances						
0810	Nonspendable Fund Balance	40,000				
0820	Restricted Fund Balance					
0830	Committed Fund Balance	3,900,000				
0840	Assigned Fund Balance	1,000,000				
0850	Unassigned Fund Balance	911,677				
Total Fund Balances		\$5,851,677				
Total Liabilities, Deferred Inflows Of Resources And Fund Balances		\$8,963,907				

LEA : 116605003 Mifflinburg Area SD

Printed 11/8/2016 1:26:13 PM

Amounts Expressed in Whole Dollars		<u>Capital Reserve (1431)</u> <u>(32)</u>	<u>Other Capital Projects</u> <u>Fund</u> <u>(39)</u>	<u>Debt Service</u> <u>(40)</u>	<u>Permanent</u> <u>(90)</u>	<u>Total Governmental</u> <u>Funds</u>
Liabilities And Deferred Inflows Of Resources And Fund Balances						
Liabilities						
0400	Due to Other Funds					9,668
0411	Due to Other Governments					
0412	Due to Primary Government					
0413	Due to Component Unit					
0420	Accounts Payable					154,849
0430	Contracts Payable					
0440	Current Portion of Long-Term Debt					
0450	Short-Term Payables					
0461	Accrued Salaries and Benefits					2,459,984
0462	Payroll Deductions and Withholding					62,682
0480	Unearned Revenues					
0490	Other Current Liabilities					
Total Liabilities						\$2,687,183
0950	Deferred Inflows of Resources					425,047
Fund Balances						
0810	Nonspendable Fund Balance					40,000
0820	Restricted Fund Balance					
0830	Committed Fund Balance					3,900,000
0840	Assigned Fund Balance	724,774				1,724,774
0850	Unassigned Fund Balance					911,677
Total Fund Balances		\$724,774				\$6,576,451
Total Liabilities, Deferred Inflows Of Resources And Fund Balances		\$724,774				\$9,688,681

Amounts Expressed in Whole Dollars		<u>General Fund</u> <u>(10)</u>	<u>Public Purpose Trust</u> <u>(27)</u>	<u>Other Compt Approved</u> <u>(28)</u>	<u>Athletic / Activity</u> <u>(29)</u>	<u>Capital Reserve (690.</u> <u>1850)</u> <u>(31)</u>
Revenues						
6000	Revenue from Local Sources	14,857,580				
7000	Revenue from State Sources	13,027,502				
8000	Revenue from Federal Sources	803,835				
Total Revenues		\$28,688,917				
Expenditures						
1000	Instruction	17,923,724				
2000	Support Services	8,411,221				
3000	Operation of Non-Instructional Services	548,312				
4000	Facilities Acquisition, Construction and Improvement Services					
5110	Debt Service	1,253,590				
5130	Refund of Prior Year Revenues / Receipts					
5140	Short-Term Borrowing – Interest and Costs					
Total Expenditures		\$28,136,847				
Excess (Deficiency) Of Revenues Over Expenditures		\$552,070				
Other Financing Sources (Uses)						
9110	Face Value of Bonds Issued					
9120	Proceeds from Refunding of Bonds					
9130	Bond Premiums					
9200	Proceeds from Extended-Term Financing					
9300	Interfund Transfers - IN					
9400	Sale of or Compensation for Loss of Fixed Assets	137,183				
9710	Transfers from Component Units					
9720	Transfers from Primary Governments					
9910	Other Financing Sources Not Listed in the 9000 Series					
9990	Insurance Recoveries					
5120	Debt Service – Refunded Bonds					
5150	Bond Discounts					
5200	Interfund Transfers – Out	384,148				
5300	Transfers Out to Component Units/Primary Governments					
Total Other Financing Sources (Uses)		(\$246,965)				

LEA : 116605003 Mifflinburg Area SD

Printed 11/8/2016 1:26:16 PM

Amounts Expressed in Whole Dollars	Capital Reserve (1431) (32)	Other Capital Projects Fund (39)	Debt Service (40)	Permanent (90)	Total Governmental Funds
Revenues					
6000 Revenue from Local Sources	1,378		153		14,859,111
7000 Revenue from State Sources					13,027,502
8000 Revenue from Federal Sources					803,835
Total Revenues	\$1,378		\$153		\$28,690,448
Expenditures					
1000 Instruction					17,923,724
2000 Support Services	876,308				9,287,529
3000 Operation of Non-Instructional Services					548,312
4000 Facilities Acquisition, Construction and Improvement Services					
5110 Debt Service			1,735		1,255,325
5130 Refund of Prior Year Revenues / Receipts					
5140 Short-Term Borrowing – Interest and Costs					
Total Expenditures	\$876,308		\$1,735		\$29,014,890
Excess (Deficiency) Of Revenues Over Expenditures	(\$874,930)		(\$1,582)		(\$324,442)
Other Financing Sources (Uses)					
9110 Face Value of Bonds Issued					
9120 Proceeds from Refunding of Bonds					
9130 Bond Premiums					
9200 Proceeds from Extended-Term Financing					
9300 Interfund Transfers - IN	382,540				382,540
9400 Sale of or Compensation for Loss of Fixed Assets					137,183
9710 Transfers from Component Units					
9720 Transfers from Primary Governments					
9910 Other Financing Sources Not Listed in the 9000 Series					
9990 Insurance Recoveries					
5120 Debt Service – Refunded Bonds					
5150 Bond Discounts					
5200 Interfund Transfers – Out					384,148
5300 Transfers Out to Component Units/Primary Governments					
Total Other Financing Sources (Uses)	\$382,540				\$135,575

Amounts Expressed in Whole Dollars		<u>General Fund</u> <u>(10)</u>	<u>Public Purpose Trust</u> <u>(27)</u>	<u>Other Compt Approved</u> <u>(28)</u>	<u>Athletic / Activity</u> <u>(29)</u>	<u>Capital Reserve</u> <u>(690.</u> <u>1850)</u> <u>(31)</u>
Special And Extraordinary Items						
9920	Special Items – Gains					
9930	Extraordinary Items – Gains					
5520	Special Items – Losses					
5530	Extraordinary Items – Losses					
Net Change In Fund Balances		\$305,105				
Fund Balance						
0001	Fund Balance - Beginning of Fiscal Year	5,546,572				
Fund Balance - End Of Year		\$5,851,677				

Amounts Expressed in Whole Dollars		<u>Capital Reserve (1431</u> <u>(32)</u>	<u>Other Capital Projects</u> <u>Fund</u> <u>(39)</u>	<u>Debt Service</u> <u>(40)</u>	<u>Permanent</u> <u>(90)</u>	<u>Total Governmental</u> <u>Funds</u>
Special And Extraordinary Items						
9920	Special Items – Gains					
9930	Extraordinary Items – Gains					
5520	Special Items – Losses					
5530	Extraordinary Items – Losses					
Net Change In Fund Balances		(\$492,390)		(\$1,582)		(\$188,867)
Fund Balance						
0001	Fund Balance - Beginning of Fiscal Year	1,217,164		1,582		6,765,318
Fund Balance - End Of Year		\$724,774				\$6,576,451

LEA : 116605003 Mifflinburg Area SD

Printed 11/8/2016 1:26:17 PM

Amounts Expressed in Whole Dollars	<u>Food Service</u> <u>(51)</u>	<u>Child Care</u> <u>Operations</u> <u>(52)</u>	<u>Other Enterprise</u> <u>(58)</u>	<u>TOTAL</u>	<u>Internal Service</u> <u>(60)</u>
Assets And Deferred Outflows Of Resources					
Current Assets					
0100 Cash and Cash Equivalents	64,297			64,297	
0110 Investments					
0130 Due From Other Funds	9,668			9,668	
0141 Due From Other Governments					
0142 State Revenue Receivable					
0143 Federal Revenue Receivable					
0146 Due from Primary Government					
0147 Due from Component Unit					
0150 Other Receivables					
0170 Inventories	31,762			31,762	
0180 Prepaid Expenses (Expenditures)					
0190 Other Current Assets					
Total Current Assets	\$105,727			\$105,727	
Noncurrent Assets					
0211 Land					
0212 Site Improvements (Net)					
0220 Buildings and Building Improvements (Net)					
0230 Machinery, Equipment and Furniture (Net)					
0250 Construction in Progress					
0260 Long Term Prepayments					
0290 Other Noncurrent Assets	114,894			114,894	
Total Noncurrent Assets	\$114,894			\$114,894	
0910 Deferred Outflows of Resources					
Total Assets And Deferred Outflows Of Resources	\$220,621			\$220,621	

Amounts Expressed in Whole Dollars	<u>Food Service</u> (51)	<u>Child Care</u> <u>Operations</u> (52)	<u>Other Enterprise</u> (58)	<u>TOTAL</u>	<u>Internal Service</u> (60)
Liabilities And Deferred Inflows Of Resources And Net Position					
Current Liabilities					
0400 Due to Other Funds					
0411 Due to Other Governments					
0413 Due to Component Unit					
0420 Accounts Payable					
0430 Contracts Payable					
0440 Current Portion of Long-Term Debt					
0450 Short-Term Payables					
0461 Accrued Salaries and Benefits					
0462 Payroll Deductions and Withholding					
0480 Unearned Revenues	17,264			17,264	
0490 Other Current Liabilities					
Total Current Liabilities	\$17,264			\$17,264	
Noncurrent Liabilities					
0510 Bonds Payable					
0520 Extended-Term Financing Agreements Payable					
0530 Lease-Purchase Obligations					
0540 Accumulated Compensated Absences					
0550 Authority Lease Obligations					
0560 Other Post-Employment Benefits (OPEB)					
0570 Net Pension Liability					
0599 Other Long-Term Liabilities					
Total Noncurrent Liabilities					
Total Liabilities	\$17,264			\$17,264	
0950 Deferred Inflows of Resources					
Net Position					
0791 Invested in Capital Assets, Net of Related Debt	114,894			114,894	
0008 Restricted Net Position (0792 – 0798)					
0799 Unrestricted Net Position	88,463			88,463	
Total Net Position	\$203,357			\$203,357	
Total Liabilities And Deferred Inflows Of Resources And Net Position	\$220,621			\$220,621	

Amounts Expressed in Whole Dollars	Food Service (51)	Child Care Operations (52)	Other Enterprise (58)	TOTAL	Internal Service (60)
Operating Revenues					
6600 Food Service Revenue	383,753			383,753	
0071 Charges for Services					
0072 Other Operating Revenue	4,228			4,228	
Total Operating Revenues	\$387,981			\$387,981	
Operating Expenses					
100 Personnel Services – Salaries	360,419			360,419	
200 Personnel Services – Employee Benefits	157,744			157,744	
300 Purchased Professional and Technical Services	20			20	
400 Purchased Property Services	22,986			22,986	
500 Other Purchased Services	808			808	
600 Supplies	489,325			489,325	
740 Depreciation	21,377			21,377	
810 Dues and Fees					
890 Miscellaneous Expenditures	1,961			1,961	
Total Operating Expenses	\$1,054,640			\$1,054,640	
Operating Income (Loss)	(\$666,659)			(\$666,659)	
Non Operating Revenues (Expenses)					
6500 Earnings on Investments	43			43	
6920 Contributions and Donations from Private Sources					
6930 Gains or Losses on Sale of Fixed Assets					
6991 Refunds of a Prior Year Expenditure					
7000 Revenue from State Sources	93,545			93,545	
8000 Revenue from Federal Sources	536,245			536,245	
820 Claims and Judgments Against the LEA					
830 Interest					
TOTAL Non Operating Revenues (Expenses)	\$629,833			\$629,833	
Income (Loss) Before Contributions And Transfers	(\$36,826)			(\$36,826)	

Amounts Expressed in Whole Dollars	<u>Food Service</u> <u>(51)</u>	<u>Child Care Operations</u> <u>(52)</u>	<u>Other Enterprise</u> <u>(58)</u>	<u>TOTAL</u>	<u>Internal Service</u> <u>(60)</u>
Contributions, Transfers, and Special and Extraordinary Items					
5200 Interfund Transfers – Out					
5300 Transfers Out to Component Units/Primary Governments					
5520 Special Items – Losses					
5530 Extraordinary Items – Losses					
9300 Interfund Transfers - IN	1,608			1,608	
9500 Capital Contributions					
9700 Transfers IN From Component Units/Primary Governments					
9920 Special Items – Gains					
9930 Extraordinary Items – Gains					
Change In Net Position	(\$35,218)			(\$35,218)	
0002 Net Position - Beginning of Fiscal Year	238,575			238,575	
0003 Accounting Changes / Residual Equity Transfers					
Net Position - End Of Year	\$203,357			\$203,357	

LEA : 116605003 Mifflinburg Area SD

Printed 11/8/2016 1:26:23 PM

Amounts Expressed in Whole Dollars	Food Service (51)	Child Care Operations (52)	Other Enterprise (58)	TOTAL	Internal Service(60)
Cash Flows From Operating Activities					
0011 Cash Receipts From Users	389,366			389,366	
0012 Cash Receipts From Assessments Made to Other Funds					
0013 Cash Receipts From Earnings on Investments					
0014 Cash Receipts From Other Operating Revenue					
0015 Cash Payments To Employees For Services	518,163			518,163	
0016 Cash Payments For Insurance Claims					
0017 Cash Payments To Suppliers For Goods and Services	443,108			443,108	
0018 Cash Payments For Other Operating Expenses	1,961			1,961	
Net Cash Provided By (Used For) Operating Activities	(\$573,866)			(\$573,866)	
Cash Flows From Non-Capital Financing Activities					
0021 Receipts From Local Sources - 6000					
0022 Receipts From State Sources - 7000	93,545			93,545	
0023 Receipts From Federal Sources -8000	457,590			457,590	
0024 Notes and Loans Received (Repaid)					
0025 Interest Paid on Notes/Loans - 5100-830					
0026 Operating Transfers In (Out)/Residual Equity Trans					
0027 Operating Transfers In (Out) Primary Government / Comp Unit					
0028 Receipts From Refund of Prior Year Expenditures - 6991					
0029 Special and Extraordinary Gains (losses)					
Net Cash Prov By (Used for) Non-Capital Financing Activities	\$551,135			\$551,135	
Cash Flows From Capital and Related Financing Activities					
0031 Payments For Fac Acq, Const, and Imp - 4000					
0032 Gain / (Loss) on Sale of Fixed Assets - 6930					
0033 Proceeds From Extended Term Financing - 9200					
0034 Principal Paid on Financing Agreements					
0035 Interest Paid on Financing Agreements - 5100-830					
0036 (Inc) Dec in Contributed Capital					
Net Cash Prov By (Used for) Capital and Related Financing Activities					
Cash Flows From Investing Activities					
0041 Earnings on Investments - 6500	43			43	
0042 Purchase of Inv Securities / Deposits to Inv Pools					
0043 Receipts From Investment Pool Withdrawals					
0044 Proceeds from Sale and Maturity of Inv Securities					
0045 Loans Received (Paid)					
Net Cash Prov By (Used for) Investing Activities	\$43			\$43	

LEA : 116605003 Mifflinburg Area SD

Printed 11/8/2016 1:26:23 PM

	Food Service (51)	Child Care Operations (52)	Other Enterprise (58)	TOTAL	Internal Service (60)
Net Increase (Decrease) in Cash Flows	(22,688)			(22,688)	
0004 Cash and Cash Equivalents Beginning of Year	86,985			86,985	
Cash and Cash Equivalents at Year End	\$64,297			\$64,297	
Reconciliation of Operating Income (Loss) To Net Cash Provided by (Used For) Operating Activities					
0005 Operating Income (Loss) per REP	(666,659)			(666,659)	
Adjustments					
0051 Depreciation and Net Amortization	21,377			21,377	
0052 Provision for Uncollectible Accounts					
0053 Other Adjustments					
Effect of Changes in Assets, Liabilities, Deferred Outflows and Deferred Inflows					
0054 (Inc) Dec In Accounts Receivable (0120-0150)					
0055 Advances to Other Funds (0160)					
0056 (Inc) Dec in Inventories (0170)	(8,624)			(8,624)	
0057 (Inc) Dec in Prepaid Expenses (0180)					
0058 (Inc) Dec in Other Current or Noncurrent Assets	78,655			78,655	
0064 Deferred Outflows (0910)					
0059 Inc (Dec) in Accounts Payable (0400-0450)					
0060 Inc (Dec) in Accrued Salaries/Benefits (0461)					
0065 Inc (Dec) in Net Pension Liabilities (0570)					
0066 Inc (Dec) in Other Postemp Benefit Oblig (0560)					
0061 Inc (Dec) in Payroll Deductions/Withholding (0462)					
0062 Inc (Dec) in Unearned Revenue (0480)	1,385			1,385	
0063 Inc (Dec) in Other Current or Noncurrent Liabilities					
0067 Deferred Inflows (0950)					
Total Adjustments	\$92,793			\$92,793	
Cash Provided By (Used for) Total	(\$573,866)			(\$573,866)	

COMBINED STATEMENT OF CASH FLOWS
SCHEDULE OF NONCASH INVESTING, CAPITAL, AND FINANCING ACTIVITIES

Explanation of Transaction and Balance Sheet Effect	Amount
Total	

LEA : 116605003 Mifflinburg Area SD

Printed 11/8/2016 1:26:23 PM

Amounts Expressed in Whole Dollars	<u>Private Purpose Trust</u> <u>(71)</u>	<u>Investment Trust</u> <u>(72)</u>	<u>Pension Trust</u> <u>(73)</u>	<u>Activity</u> <u>(81)</u>
Assets And Deferred Outflows Of Resources				
Assets				
0100 Cash and Cash Equivalents	160,662			265,628
0110 Investments				
0130 Due From Other Funds				
0147 Due from Component Unit				
0150 Other Receivables				
0170 Inventories				
0180 Prepaid Expenses (Expenditures)				
0190 Other Current Assets				
0220 Buildings and Building Improvements (Net)				
0230 Machinery, Equipment and Furniture (Net)				
Total Assets	\$160,662			\$265,628
0910 Deferred Outflows of Resources				
Total Assets And Deferred Outflows Of Resources	\$160,662			\$265,628

LEA : 116605003 Mifflinburg Area SD

Printed 11/8/2016 1:26:23 PM

Amounts Expressed in Whole Dollars

	<u>Other Agency</u> <u>(89)</u>	<u>Discrete Component Units</u> <u>(98)</u>	<u>Discrete Component Units</u> <u>(99)</u>	<u>Total Fiduciary Funds</u>
Assets And Deferred Outflows Of Resources				
Assets				
0100 Cash and Cash Equivalents				426,290
0110 Investments				
0130 Due From Other Funds				
0147 Due from Component Unit				
0150 Other Receivables				
0170 Inventories				
0180 Prepaid Expenses (Expenditures)				
0190 Other Current Assets				
0220 Buildings and Building Improvements (Net)				
0230 Machinery, Equipment and Furniture (Net)				
Total Assets				\$426,290
0910 Deferred Outflows of Resources				
Total Assets And Deferred Outflows Of Resources				\$426,290

LEA : 116605003 Mifflinburg Area SD

Printed 11/8/2016 1:26:23 PM

Amounts Expressed in Whole Dollars	<u>Private Purpose Trust</u> <u>(71)</u>	<u>Investment Trust</u> <u>(72)</u>	<u>Pension Trust</u> <u>(73)</u>	<u>Activity</u> <u>(81)</u>
Liabilities, Deferred Inflows Of Resources And Net Position				
Liabilities				
0400 Due to Other Funds				
0411 Due to Other Governments				
0412 Due to Primary Government				
0413 Due to Component Unit				
0420 Accounts Payable				
0430 Contracts Payable				
0450 Short-Term Payables				
0461 Accrued Salaries and Benefits				
0462 Payroll Deductions and Withholding				
0480 Unearned Revenues				
0490 Other Current Liabilities				265,628
Total Liabilities				\$265,628
0950 Deferred Inflows of Resources				
Net Position				
0791 Invested in Capital Assets, Net of Related Debt				
0009 Restricted Net Position (0792 – 0798)	160,662			
0799 Unrestricted Net Position				
Total Net Position	\$160,662			
Total Liabilities, Deferred Inflows Of Resources And Net Position	\$160,662			\$265,628

LEA : 116605003 Mifflinburg Area SD

Printed 11/8/2016 1:26:23 PM

Amounts Expressed in Whole Dollars

<u>Other Agency</u> <u>(89)</u>	<u>Discrete Component Units</u> <u>(98)</u>	<u>Discrete Component Units</u> <u>(99)</u>	<u>Total Fiduciary Funds</u>
------------------------------------	--	--	------------------------------

Liabilities, Deferred Inflows Of Resources And Net Position

Liabilities

0400	Due to Other Funds			
0411	Due to Other Governments			
0412	Due to Primary Government			
0413	Due to Component Unit			
0420	Accounts Payable			
0430	Contracts Payable			
0450	Short-Term Payables			
0461	Accrued Salaries and Benefits			
0462	Payroll Deductions and Withholding			
0480	Unearned Revenues			
0490	Other Current Liabilities			265,628
Total Liabilities				\$265,628

0950 Deferred Inflows of Resources

Net Position

0791	Invested in Capital Assets, Net of Related Debt			
0009	Restricted Net Position (0792 – 0798)			160,662
0799	Unrestricted Net Position			
Total Net Position				\$160,662
Total Liabilities, Deferred Inflows Of Resources And Net Position				\$426,290

LEA : 116605003 Mifflinburg Area SD

Printed 11/8/2016 1:26:24 PM

Amounts Expressed in Whole Dollars	<u>Private Purpose Trust</u> <u>(71)</u>	<u>Investment Trust</u> <u>(72)</u>	<u>Pension Trust</u> <u>(73)</u>	<u>Discrete Component</u> <u>Units</u> <u>(98)</u>	<u>Discrete Component</u> <u>Units</u> <u>(99)</u>	<u>Total Fiduciary</u> <u>Funds</u>
Additions						
0091 Gifts and Contributions	23,642					23,642
0092 Other Additions	220					220
Deductions						
0093 Scholarships Awarded	18,189					18,189
0094 Other Deductions						
Change In Net Position	\$5,673					\$5,673
0006 Net Position – Beginning of Fiscal Year	154,989					154,989
0007 Net Position Held in Trust for Pension Benefits						
Net Position - End of Fiscal Year	\$160,662					\$160,662

LEA : 116605003 Mifflinburg Area SD

General Fund (10)

Printed 11/8/2016 1:26:25 PM

Page - 1 of 4

	Revenue Reported In Current Year	Current Year Tax Accrual	Prior Year Tax Accrual	Taxes Collected In Current Year
Revenue from Local Sources				
6111 Current Real Estate Taxes	8,829,830.66			8,829,830.66
6113 Public Utility Realty Taxes	15,715.40			15,715.40
6114 Payments in Lieu of Current Taxes - State / Local	69,441.02			69,441.02
6120 Current Per Capita Taxes, Section 679	34,321.10			34,321.10
6141 Current Act 511 Per Capita Taxes	64,647.60			64,647.60
6151 Current Act 511 Earned Income Taxes	4,437,230.39			4,437,230.39
6153 Current Act 511 Real Estate Transfer Taxes	158,198.16			158,198.16
6411 Delinquent Real Estate Taxes	597,218.32			597,218.32
6420 Delinquent Per Capita Taxes, Section 679	17,470.87			17,470.87
6500 Earnings on Investments	37,353.47			
6700 Revenues from LEA Activities	70,145.66			
6832 Federal IDEA Revenue Received as Pass Through	347,722.64			
6910 Rentals	37,273.89			
6920 Contributions and Donations from Private Sources	6,320.00			
6942 Summer School Tuition	2,891.00			
6944 Receipts from Other LEAs in Pennsylvania - Education	5,590.64			
6991 Refunds of a Prior Year Expenditure	90,030.93			
6999 Other Revenues Not Specified Above	36,178.25			
TOTAL Revenue from Local Sources	\$14,857,580.00			\$14,224,073.52

	Revenue Reported In Current Year			
Revenue from State Sources				
7110 Basic Education Funding	7,666,615.54			
7160 Tuition for Orphans Subsidy	77,656.18			
7220 Vocational Education	58,346.93			
7271 Special Education funds for School-Aged Pupils	1,350,408.58			
7311 Pupil Transportation Subsidy	875,481.61			
7312 Nonpublic and Charter School Pupil Transportation Subsidy	20,790.00			
7330 Health Services (Medical, Dental, Nurse, Act 25)	39,087.64			
7340 State Property Tax Reduction Allocation	568,884.77			
7505 Ready to Learn Block Grant	354,755.00			
7509 Supplemental Equipment Grants	6,992.97			
7810 State Share of Social Security and Medicare Taxes	408,504.82			
7820 State Share of Retirement Contributions	1,599,978.21			
TOTAL Revenue from State Sources	\$13,027,502.25			

	Revenue Reported <u>In Current Year</u>			
<u>Revenue from Federal Sources</u>				
8514 NCLB, Title I - Improving the Academic Achievement of the Disadvantaged	573,002.87			
8515 NCLB, Title II - Preparing, Training and Recruiting High Quality Teachers and Principals	178,229.60			
8810 School-Based Access Medicaid Reimbursement Program (SBAP) Reimbursements (Access)	49,950.75			
8820 Medical Assistance Reimbursement for Administrative Claiming (Quarterly) Program	2,651.78			
TOTAL Revenue from Federal Sources	\$803,835.00			

	Revenue Reported In Current Year	
<u>Other Financing Sources</u>		
9400 Sale of or Compensation for Loss of Fixed Assets	137,182.58	
TOTAL Other Financing Sources	\$137,182.58	
TOTAL FROM ALL SOURCES	\$28,826,099.83	\$14,224,073.52

Revenue from Local Sources	14,857,580.00
Revenue from State Sources	13,027,502.25
Revenue from Federal Sources	803,835.00
Other Financing Sources	137,182.58
TOTAL FROM ALL SOURCES	\$28,826,099.83

LEA : 116605003 Mifflinburg Area SD

Printed 11/8/2016 1:26:27 PM

General Fund (10)	
1000 Instruction	<u>Total</u>
100 <u>Personnel Services – Salaries</u>	
100 Personnel Services – Salaries	8,668,162.51
Total Personnel Services – Salaries	\$8,668,162.51
200 <u>Personnel Services – Employee Benefits</u>	
210 Group Insurance – Contracted Provider	1,844,699.32
220 Social Security Contributions	656,826.53
230 PSERS Retirement Contributions	2,204,571.99
240 Tuition Reimbursement	46,943.15
250 Unemployment Compensation	5,688.49
260 Workers' Compensation	35,594.31
280 Other Post-Employment Benefits (OPEB)	295,341.67
290 Other Current Employee Benefits	15,260.00
Total Personnel Services – Employee Benefits	\$5,104,925.46
300 <u>Purchased Professional and Technical Services</u>	
322 Professional Educational Services – Ius	228,896.46
324 Professional Educational Services – Employee Training and Development Services	1,140.00
329 Professional Educational Services – Other	87,080.00
330 Other Professional Services	2,424.71
390 Other Purchased Professional and Technical Services	13,218.22
Total Purchased Professional and Technical Services	\$332,759.39
400 <u>Purchased Property Services</u>	
430 Repairs and Maintenance Services	12,287.44
Total Purchased Property Services	\$12,287.44
500 <u>Other Purchased Services</u>	
510 Student Transportation Services	50,748.62
561 Tuition To Other School Districts Within the State	8,675.22
562 Tuition To Pennsylvania Charter Schools	796,765.30
563 Tuition To Nonpublic Schools	54,755.74
564 Tuition To Career and Technology Centers	2,314,469.84
568 Tuition To Private Residential Rehabilitative Institutions (PRRI) [In-State] and Detention Centers	231,708.88
580 Travel	5,395.24
594 IU Payment By Withholding for Institutionalized Children's Programs – Special Classes	99.01
Total Other Purchased Services	\$3,462,617.85
600 <u>Supplies</u>	
610 General Supplies	266,464.10
630 Food	2,964.20
640 Books and Periodicals	30,439.53
650 Supplies & Fees – Technology Related	23,344.81
Total Supplies	\$323,212.64
700 <u>Property</u>	
750 Equipment – Original and Additional	7,396.00
760 Equipment – Replacement	9,482.60
Total Property	\$16,878.60

LEA : 116605003 Mifflinburg Area SD

Printed 11/8/2016 1:26:27 PM

General Fund (10)	
1000 Instruction	<u>Total</u>
800 <u>Other Objects</u>	
810 Dues and Fees	50.00
890 Miscellaneous Expenditures	2,830.19
Total Other Objects	\$2,880.19
Total 1000 Instruction	\$17,923,724.08

LEA : 116605003 Mifflinburg Area SD

Printed 11/8/2016 1:26:27 PM

General Fund (10)

1100 Regular Programs – Elementary / Secondary

	Elementary	Secondary	Federal	Total
100 Personnel Services – Salaries				
100 Personnel Services – Salaries	3,599,274.18	2,915,821.76	429,441.85	6,944,537.79
Total Personnel Services – Salaries	\$3,599,274.18	\$2,915,821.76	\$429,441.85	\$6,944,537.79
200 Personnel Services – Employee Benefits				
210 Group Insurance – Contracted Provider	797,792.85	615,137.31	116,435.73	1,529,365.89
220 Social Security Contributions	272,064.11	221,436.72	32,628.61	526,129.44
230 PSERS Retirement Contributions	916,129.87	740,856.97	110,928.39	1,767,915.23
240 Tuition Reimbursement	9,456.62	26,075.05		35,531.67
250 Unemployment Compensation	30.30	742.93	1,103.56	1,876.79
260 Workers' Compensation	15,062.24	12,133.29	1,675.00	28,870.53
280 Other Post-Employment Benefits (OPEB)	162,437.92	132,903.75		295,341.67
290 Other Current Employee Benefits	7,052.73	5,770.41	2,436.86	15,260.00
Total Personnel Services – Employee Benefits	\$2,180,026.64	\$1,755,056.43	\$265,208.15	\$4,200,291.22
300 Purchased Professional and Technical Services				
322 Professional Educational Services – Ius	3,743.14	3,062.56		6,805.70
324 Professional Educational Services – Employee Training and Development Services		715.00		715.00
330 Other Professional Services	1,677.90	746.81		2,424.71
390 Other Purchased Professional and Technical Services	13,129.42	88.80		13,218.22
Total Purchased Professional and Technical Services	\$18,550.46	\$4,613.17		\$23,163.63
400 Purchased Property Services				
430 Repairs and Maintenance Services	2,854.02	9,145.61		11,999.63
Total Purchased Property Services	\$2,854.02	\$9,145.61		\$11,999.63
500 Other Purchased Services				
510 Student Transportation Services	11,725.62	8,507.62		20,233.24
561 Tuition To Other School Districts Within the State	1,013.79	7,661.43		8,675.22
562 Tuition To Pennsylvania Charter Schools	164,785.36	476,610.70		641,396.06
568 Tuition To Private Residential Rehabilitative Institutions (PRRI) [In-State] and Detention Centers	17,926.37	5,384.91		23,311.28
580 Travel	270.47	1,784.71		2,055.18
Total Other Purchased Services	\$195,721.61	\$499,949.37		\$695,670.98
600 Supplies				
610 General Supplies	107,599.98	108,416.88	16,747.90	232,764.76
630 Food	1,522.22	1,441.98		2,964.20
640 Books and Periodicals	23,176.36	7,263.17		30,439.53
650 Supplies & Fees – Technology Related	12,839.65	10,505.16		23,344.81
Total Supplies	\$145,138.21	\$127,627.19	\$16,747.90	\$289,513.30
700 Property				
750 Equipment – Original and Additional	1,217.28	5,122.72		6,340.00
760 Equipment – Replacement	3,641.32	5,841.28		9,482.60
Total Property	\$4,858.60	\$10,964.00		\$15,822.60
800 Other Objects				
810 Dues and Fees		50.00		50.00

LEA : 116605003 Mifflinburg Area SD

Printed 11/8/2016 1:26:27 PM

General Fund (10)

1100 Regular Programs – Elementary / Secondary	<u>Elementary</u>	<u>Secondary</u>	<u>Federal</u>	<u>Total</u>
Total Other Objects		\$50.00		\$50.00
Total 1100 Regular Programs – Elementary / Secondary	\$6,146,423.72	\$5,323,227.53	\$711,397.90	\$12,181,049.15

LEA : 116605003 Mifflinburg Area SD

Printed 11/8/2016 1:26:27 PM

General Fund (10)

1110 Regular Programs

	Elementary	Secondary	Federal	Total
100 <u>Personnel Services – Salaries</u>				
100 Personnel Services – Salaries	3,599,274.18	2,915,821.76	137,638.85	6,652,734.79
Total Personnel Services – Salaries	\$3,599,274.18	\$2,915,821.76	\$137,638.85	\$6,652,734.79
200 <u>Personnel Services – Employee Benefits</u>				
210 Group Insurance – Contracted Provider	797,792.85	615,137.31	14,378.62	1,427,308.78
220 Social Security Contributions	272,064.11	221,436.72	10,519.00	504,019.83
230 PSERS Retirement Contributions	916,129.87	740,856.97	35,575.25	1,692,562.09
240 Tuition Reimbursement	9,456.62	26,075.05		35,531.67
250 Unemployment Compensation	30.30	742.93	560.16	1,333.39
260 Workers' Compensation	15,062.24	12,133.29	537.05	27,732.58
280 Other Post-Employment Benefits (OPEB)	162,437.92	132,903.75		295,341.67
290 Other Current Employee Benefits	7,052.73	5,770.41		12,823.14
Total Personnel Services – Employee Benefits	\$2,180,026.64	\$1,755,056.43	\$61,570.08	\$3,996,653.15
300 <u>Purchased Professional and Technical Services</u>				
322 Professional Educational Services – Ius	3,743.14	3,062.56		6,805.70
324 Professional Educational Services – Employee Training and Development Services		715.00		715.00
330 Other Professional Services	1,677.90	746.81		2,424.71
390 Other Purchased Professional and Technical Services	13,129.42	88.80		13,218.22
Total Purchased Professional and Technical Services	\$18,550.46	\$4,613.17		\$23,163.63
400 <u>Purchased Property Services</u>				
430 Repairs and Maintenance Services	2,854.02	9,145.61		11,999.63
Total Purchased Property Services	\$2,854.02	\$9,145.61		\$11,999.63
500 <u>Other Purchased Services</u>				
510 Student Transportation Services	11,725.62	8,507.62		20,233.24
561 Tuition To Other School Districts Within the State	1,013.79	7,661.43		8,675.22
562 Tuition To Pennsylvania Charter Schools	164,785.36	476,610.70		641,396.06
568 Tuition To Private Residential Rehabilitative Institutions (PRRI) [In-State] and Detention Centers	17,926.37	5,384.91		23,311.28
580 Travel	270.47	1,784.71		2,055.18
Total Other Purchased Services	\$195,721.61	\$499,949.37		\$695,670.98
600 <u>Supplies</u>				
610 General Supplies	107,599.98	108,416.88		216,016.86
630 Food	1,522.22	1,441.98		2,964.20
640 Books and Periodicals	23,176.36	7,263.17		30,439.53
650 Supplies & Fees – Technology Related	12,839.65	10,505.16		23,344.81
Total Supplies	\$145,138.21	\$127,627.19		\$272,765.40
700 <u>Property</u>				
750 Equipment – Original and Additional	1,217.28	5,122.72		6,340.00
760 Equipment – Replacement	3,641.32	5,841.28		9,482.60
Total Property	\$4,858.60	\$10,964.00		\$15,822.60
800 <u>Other Objects</u>				
810 Dues and Fees		50.00		50.00

LEA : 116605003 Mifflinburg Area SD

Printed 11/8/2016 1:26:27 PM

General Fund (10)

1110 Regular Programs

	<u>Elementary</u>	<u>Secondary</u>	<u>Federal</u>	<u>Total</u>
Total Other Objects		\$50.00		\$50.00
Total 1110 Regular Programs	\$6,146,423.72	\$5,323,227.53	\$199,208.93	\$11,668,860.18

LEA : 116605003 Mifflinburg Area SD

Printed 11/8/2016 1:26:27 PM

General Fund (10)				
1190 Federally-Funded Regular Programs	<u>Elementary</u>	<u>Secondary</u>	<u>Federal</u>	<u>Total</u>
100 <u>Personnel Services – Salaries</u>				
100 Personnel Services – Salaries			291,803.00	291,803.00
Total Personnel Services – Salaries			\$291,803.00	\$291,803.00
200 <u>Personnel Services – Employee Benefits</u>				
210 Group Insurance – Contracted Provider			102,057.11	102,057.11
220 Social Security Contributions			22,109.61	22,109.61
230 PSERS Retirement Contributions			75,353.14	75,353.14
250 Unemployment Compensation			543.40	543.40
260 Workers' Compensation			1,137.95	1,137.95
290 Other Current Employee Benefits			2,436.86	2,436.86
Total Personnel Services – Employee Benefits			\$203,638.07	\$203,638.07
600 <u>Supplies</u>				
610 General Supplies			16,747.90	16,747.90
Total Supplies			\$16,747.90	\$16,747.90
Total 1190 Federally-Funded Regular Programs			\$512,188.97	\$512,188.97

LEA : 116605003 Mifflinburg Area SD

Printed 11/8/2016 1:26:27 PM

General Fund (10)				
1200 Special Programs – Elementary / Secondary	<u>Elementary</u>	<u>Secondary</u>	<u>Federal</u>	<u>Total</u>
100 <u>Personnel Services – Salaries</u>				
100 Personnel Services – Salaries	632,617.69	510,361.53	392,142.60	1,535,121.82
Total Personnel Services – Salaries	\$632,617.69	\$510,361.53	\$392,142.60	\$1,535,121.82
200 <u>Personnel Services – Employee Benefits</u>				
210 Group Insurance – Contracted Provider	111,328.53	130,128.90	53,215.00	294,672.43
220 Social Security Contributions	47,998.65	38,617.69	29,874.74	116,491.08
230 PSERS Retirement Contributions	163,468.28	131,877.29	93,993.93	389,339.50
240 Tuition Reimbursement	8,943.00	(1,263.52)		7,679.48
250 Unemployment Compensation	812.66	714.45	1,950.39	3,477.50
260 Workers' Compensation	2,467.69	1,990.92	1,529.74	5,988.35
Total Personnel Services – Employee Benefits	\$335,018.81	\$302,065.73	\$180,563.80	\$817,648.34
300 <u>Purchased Professional and Technical Services</u>				
322 Professional Educational Services – Ius	122,258.73	99,832.03		222,090.76
324 Professional Educational Services – Employee Training and Development Services	77.10	72.90		150.00
329 Professional Educational Services – Other	47,894.00	39,186.00		87,080.00
Total Purchased Professional and Technical Services	\$170,229.83	\$139,090.93		\$309,320.76
500 <u>Other Purchased Services</u>				
510 Student Transportation Services	16,783.46	13,731.92		30,515.38
562 Tuition To Pennsylvania Charter Schools		155,369.24		155,369.24
568 Tuition To Private Residential Rehabilitative Institutions (PRRI) [In-State] and Detention Centers	114,256.93	94,140.67		208,397.60
580 Travel	262.61	128.53		391.14
594 IU Payment By Withholding for Institutionalized Children's Programs – Special Classes	54.46	44.55		99.01
Total Other Purchased Services	\$131,357.46	\$263,414.91		\$394,772.37
600 <u>Supplies</u>				
610 General Supplies	15,196.19	15,146.60	60.00	30,402.79
Total Supplies	\$15,196.19	\$15,146.60	\$60.00	\$30,402.79
700 <u>Property</u>				
750 Equipment – Original and Additional	580.80	475.20		1,056.00
Total Property	\$580.80	\$475.20		\$1,056.00
800 <u>Other Objects</u>				
890 Miscellaneous Expenditures	1,556.60	1,273.59		2,830.19
Total Other Objects	\$1,556.60	\$1,273.59		\$2,830.19
Total 1200 Special Programs – Elementary / Secondary	\$1,286,557.38	\$1,231,828.49	\$572,766.40	\$3,091,152.27

LEA : 116605003 Mifflinburg Area SD

Printed 11/8/2016 1:26:27 PM

General Fund (10)

1210 Life Skills Support

	Elementary	Secondary	Federal	Total
100 <u>Personnel Services – Salaries</u>				
100 Personnel Services – Salaries	57,775.91	43,347.72	104,238.34	205,361.97
Total Personnel Services – Salaries	\$57,775.91	\$43,347.72	\$104,238.34	\$205,361.97
200 <u>Personnel Services – Employee Benefits</u>				
210 Group Insurance – Contracted Provider	1,476.26	20,147.52	28,098.00	49,721.78
220 Social Security Contributions	4,419.76	3,285.14	7,930.74	15,635.64
230 PSERS Retirement Contributions	14,929.22	11,201.03	23,776.55	49,906.80
240 Tuition Reimbursement	6,360.00			6,360.00
250 Unemployment Compensation	58.91	58.88	521.89	639.68
260 Workers' Compensation	225.40	169.11	406.89	801.40
Total Personnel Services – Employee Benefits	\$27,469.55	\$34,861.68	\$60,734.07	\$123,065.30
300 <u>Purchased Professional and Technical Services</u>				
322 Professional Educational Services – Ius	83,374.69	68,215.66		151,590.35
324 Professional Educational Services – Employee Training and Development Services		35.00		35.00
Total Purchased Professional and Technical Services	\$83,374.69	\$68,250.66		\$151,625.35
500 <u>Other Purchased Services</u>				
510 Student Transportation Services	3,279.37	2,683.12		5,962.49
580 Travel		23.97		23.97
Total Other Purchased Services	\$3,279.37	\$2,707.09		\$5,986.46
600 <u>Supplies</u>				
610 General Supplies	2,023.09	4,004.68		6,027.77
Total Supplies	\$2,023.09	\$4,004.68		\$6,027.77
Total 1210 Life Skills Support	\$173,922.61	\$153,171.83	\$164,972.41	\$492,066.85

LEA : 116605003 Mifflinburg Area SD

Printed 11/8/2016 1:26:27 PM

General Fund (10)

1220 Sensory Support

	Elementary	Secondary	Federal	Total
100 Personnel Services – Salaries				
100 Personnel Services – Salaries	111,086.04	33,742.03		144,828.07
Total Personnel Services – Salaries	\$111,086.04	\$33,742.03		\$144,828.07
200 Personnel Services – Employee Benefits				
210 Group Insurance – Contracted Provider	33,281.66	11,523.34		44,805.00
220 Social Security Contributions	8,397.41	2,581.27		10,978.68
230 PSERS Retirement Contributions	28,704.45	8,718.95		37,423.40
250 Unemployment Compensation	140.44	36.28		176.72
260 Workers' Compensation	433.33	131.65		564.98
Total Personnel Services – Employee Benefits	\$70,957.29	\$22,991.49		\$93,948.78
500 Other Purchased Services				
580 Travel	54.80	44.84		99.64
Total Other Purchased Services	\$54.80	\$44.84		\$99.64
600 Supplies				
610 General Supplies	3,340.60	2,733.22		6,073.82
Total Supplies	\$3,340.60	\$2,733.22		\$6,073.82
700 Property				
750 Equipment – Original and Additional	580.80	475.20		1,056.00
Total Property	\$580.80	\$475.20		\$1,056.00
Total 1220 Sensory Support	\$186,019.53	\$59,986.78		\$246,006.31

LEA : 116605003 Mifflinburg Area SD

Printed 11/8/2016 1:26:27 PM

General Fund (10)				
1230 Emotional Support	<u>Elementary</u>	<u>Secondary</u>	<u>Federal</u>	<u>Total</u>
100 <u>Personnel Services – Salaries</u>				
100 Personnel Services – Salaries	89,026.34		86,243.41	175,269.75
Total Personnel Services – Salaries	\$89,026.34		\$86,243.41	\$175,269.75
200 <u>Personnel Services – Employee Benefits</u>				
210 Group Insurance – Contracted Provider	17,329.00			17,329.00
220 Social Security Contributions	6,810.65		6,597.72	13,408.37
230 PSERS Retirement Contributions	23,004.31		20,240.51	43,244.82
240 Tuition Reimbursement	2,583.00			2,583.00
250 Unemployment Compensation	117.86		508.76	626.62
260 Workers' Compensation	347.12		336.35	683.47
Total Personnel Services – Employee Benefits	\$50,191.94		\$27,683.34	\$77,875.28
300 <u>Purchased Professional and Technical Services</u>				
322 Professional Educational Services – Ius	16,741.78	13,697.82		30,439.60
Total Purchased Professional and Technical Services	\$16,741.78	\$13,697.82		\$30,439.60
500 <u>Other Purchased Services</u>				
580 Travel	138.00			138.00
Total Other Purchased Services	\$138.00			\$138.00
600 <u>Supplies</u>				
610 General Supplies	995.02	111.34		1,106.36
Total Supplies	\$995.02	\$111.34		\$1,106.36
Total 1230 Emotional Support	\$157,093.08	\$13,809.16	\$113,926.75	\$284,828.99

LEA : 116605003 Mifflinburg Area SD

Printed 11/8/2016 1:26:27 PM

General Fund (10)				
1240 Academic Support	<u>Elementary</u>	<u>Secondary</u>	<u>Federal</u>	<u>Total</u>
100 <u>Personnel Services – Salaries</u>				
100 Personnel Services – Salaries	285,079.24	338,593.68	120,581.13	744,254.05
Total Personnel Services – Salaries	\$285,079.24	\$338,593.68	\$120,581.13	\$744,254.05
200 <u>Personnel Services – Employee Benefits</u>				
210 Group Insurance – Contracted Provider	51,820.14	80,026.04		131,846.18
220 Social Security Contributions	21,559.98	25,508.26	9,215.04	56,283.28
230 PSERS Retirement Contributions	73,664.55	87,492.41	29,025.85	190,182.81
240 Tuition Reimbursement		(1,263.52)		(1,263.52)
250 Unemployment Compensation	413.92	524.11	628.00	1,566.03
260 Workers' Compensation	1,112.09	1,320.78	470.27	2,903.14
Total Personnel Services – Employee Benefits	\$148,570.68	\$193,608.08	\$39,339.16	\$381,517.92
300 <u>Purchased Professional and Technical Services</u>				
322 Professional Educational Services – Ius	241.80			241.80
324 Professional Educational Services – Employee Training and Development Services	77.10	37.90		115.00
Total Purchased Professional and Technical Services	\$318.90	\$37.90		\$356.80
500 <u>Other Purchased Services</u>				
510 Student Transportation Services	13,504.09	11,048.80		24,552.89
580 Travel	69.81	59.72		129.53
Total Other Purchased Services	\$13,573.90	\$11,108.52		\$24,682.42
600 <u>Supplies</u>				
610 General Supplies	1,114.45	1,034.47	60.00	2,208.92
Total Supplies	\$1,114.45	\$1,034.47	\$60.00	\$2,208.92
Total 1240 Academic Support	\$448,657.17	\$544,382.65	\$159,980.29	\$1,153,020.11

LEA : 116605003 Mifflinburg Area SD

Printed 11/8/2016 1:26:27 PM

General Fund (10)

1241 Learning Support – Public	Elementary	Secondary	Federal	Total
100 <u>Personnel Services – Salaries</u>				
100 Personnel Services – Salaries	246,048.39	265,302.38	120,581.13	631,931.90
Total Personnel Services – Salaries	\$246,048.39	\$265,302.38	\$120,581.13	\$631,931.90
200 <u>Personnel Services – Employee Benefits</u>				
210 Group Insurance – Contracted Provider	41,885.32	69,541.86		111,427.18
220 Social Security Contributions	18,646.71	20,011.96	9,215.04	47,873.71
230 PSERS Retirement Contributions	63,579.02	68,553.98	29,025.85	161,158.85
240 Tuition Reimbursement		(1,263.52)		(1,263.52)
250 Unemployment Compensation	367.23	441.15	628.00	1,436.38
260 Workers' Compensation	959.86	1,034.86	470.27	2,464.99
Total Personnel Services – Employee Benefits	\$125,438.14	\$158,320.29	\$39,339.16	\$323,097.59
300 <u>Purchased Professional and Technical Services</u>				
322 Professional Educational Services – Ius	241.80			241.80
324 Professional Educational Services – Employee Training and Development Services	49.60	15.40		65.00
Total Purchased Professional and Technical Services	\$291.40	\$15.40		\$306.80
500 <u>Other Purchased Services</u>				
510 Student Transportation Services	13,504.09	11,048.80		24,552.89
580 Travel	3.31	5.32		8.63
Total Other Purchased Services	\$13,507.40	\$11,054.12		\$24,561.52
600 <u>Supplies</u>				
610 General Supplies	747.84	734.52	60.00	1,542.36
Total Supplies	\$747.84	\$734.52	\$60.00	\$1,542.36
Total 1241 Learning Support – Public	\$386,033.17	\$435,426.71	\$159,980.29	\$981,440.17

LEA : 116605003 Mifflinburg Area SD

Printed 11/8/2016 1:26:27 PM

General Fund (10)				
1243 Gifted Support	<u>Elementary</u>	<u>Secondary</u>	<u>Federal</u>	<u>Total</u>
100 <u>Personnel Services – Salaries</u>				
100 Personnel Services – Salaries	39,030.85	73,291.30		112,322.15
Total Personnel Services – Salaries	\$39,030.85	\$73,291.30		\$112,322.15
200 <u>Personnel Services – Employee Benefits</u>				
210 Group Insurance – Contracted Provider	9,934.82	10,484.18		20,419.00
220 Social Security Contributions	2,913.27	5,496.30		8,409.57
230 PSERS Retirement Contributions	10,085.53	18,938.43		29,023.96
250 Unemployment Compensation	46.69	82.96		129.65
260 Workers' Compensation	152.23	285.92		438.15
Total Personnel Services – Employee Benefits	\$23,132.54	\$35,287.79		\$58,420.33
300 <u>Purchased Professional and Technical Services</u>				
324 Professional Educational Services – Employee Training and Development Services	27.50	22.50		50.00
Total Purchased Professional and Technical Services	\$27.50	\$22.50		\$50.00
500 <u>Other Purchased Services</u>				
580 Travel	66.50	54.40		120.90
Total Other Purchased Services	\$66.50	\$54.40		\$120.90
600 <u>Supplies</u>				
610 General Supplies	366.61	299.95		666.56
Total Supplies	\$366.61	\$299.95		\$666.56
Total 1243 Gifted Support	\$62,624.00	\$108,955.94		\$171,579.94

LEA : 116605003 Mifflinburg Area SD

Printed 11/8/2016 1:26:27 PM

General Fund (10)

1260 Physical Support	Elementary	Secondary	Federal	Total
300 <u>Purchased Professional and Technical Services</u>				
329 Professional Educational Services – Other	47,894.00	39,186.00		87,080.00
Total Purchased Professional and Technical Services	\$47,894.00	\$39,186.00		\$87,080.00
600 <u>Supplies</u>				
610 General Supplies	1,621.60	1,326.76		2,948.36
Total Supplies	\$1,621.60	\$1,326.76		\$2,948.36
Total 1260 Physical Support	\$49,515.60	\$40,512.76		\$90,028.36

LEA : 116605003 Mifflinburg Area SD

Printed 11/8/2016 1:26:27 PM

General Fund (10)				
1270 Multi-Handicapped Support	<u>Elementary</u>	<u>Secondary</u>	<u>Federal</u>	<u>Total</u>
100 <u>Personnel Services – Salaries</u>				
100 Personnel Services – Salaries	89,650.16	94,678.10	81,079.72	265,407.98
Total Personnel Services – Salaries	\$89,650.16	\$94,678.10	\$81,079.72	\$265,407.98
200 <u>Personnel Services – Employee Benefits</u>				
210 Group Insurance – Contracted Provider	7,421.47	18,432.00	25,117.00	50,970.47
220 Social Security Contributions	6,810.85	7,243.02	6,131.24	20,185.11
230 PSERS Retirement Contributions	23,165.75	24,464.90	20,951.02	68,581.67
250 Unemployment Compensation	81.53	95.18	291.74	468.45
260 Workers' Compensation	349.75	369.38	316.23	1,035.36
Total Personnel Services – Employee Benefits	\$37,829.35	\$50,604.48	\$52,807.23	\$141,241.06
300 <u>Purchased Professional and Technical Services</u>				
322 Professional Educational Services – lus	19,579.59	16,019.66		35,599.25
Total Purchased Professional and Technical Services	\$19,579.59	\$16,019.66		\$35,599.25
600 <u>Supplies</u>				
610 General Supplies	6,101.43	5,936.13		12,037.56
Total Supplies	\$6,101.43	\$5,936.13		\$12,037.56
Total 1270 Multi-Handicapped Support	\$153,160.53	\$167,238.37	\$133,886.95	\$454,285.85

LEA : 116605003 Mifflinburg Area SD

Printed 11/8/2016 1:26:27 PM

General Fund (10)				
1290 Special Programs - Other Support	<u>Elementary</u>	<u>Secondary</u>	<u>Federal</u>	<u>Total</u>
300 <u>Purchased Professional and Technical Services</u>				
322 Professional Educational Services – Ius	2,320.87	1,898.89		4,219.76
Total Purchased Professional and Technical Services	\$2,320.87	\$1,898.89		\$4,219.76
500 <u>Other Purchased Services</u>				
562 Tuition To Pennsylvania Charter Schools		155,369.24		155,369.24
568 Tuition To Private Residential Rehabilitative Institutions (PRRI) [In-State] and Detention Centers	114,256.93	94,140.67		208,397.60
594 IU Payment By Withholding for Institutionalized Children's Programs – Special Classes	54.46	44.55		99.01
Total Other Purchased Services	\$114,311.39	\$249,554.46		\$363,865.85
800 <u>Other Objects</u>				
890 Miscellaneous Expenditures	1,556.60	1,273.59		2,830.19
Total Other Objects	\$1,556.60	\$1,273.59		\$2,830.19
Total 1290 Special Programs - Other Support	\$118,188.86	\$252,726.94		\$370,915.80

LEA : 116605003 Mifflinburg Area SD

Printed 11/8/2016 1:26:27 PM

General Fund (10)

1300 Vocational Education

	Elementary	Secondary	Federal	Total
100 <u>Personnel Services – Salaries</u>				
100 Personnel Services – Salaries		116,354.00		116,354.00
Total Personnel Services – Salaries		\$116,354.00		\$116,354.00
200 <u>Personnel Services – Employee Benefits</u>				
210 Group Insurance – Contracted Provider		20,661.00		20,661.00
220 Social Security Contributions		8,704.61		8,704.61
230 PSERS Retirement Contributions		30,065.95		30,065.95
240 Tuition Reimbursement		3,732.00		3,732.00
250 Unemployment Compensation		116.27		116.27
260 Workers' Compensation		453.89		453.89
Total Personnel Services – Employee Benefits		\$63,733.72		\$63,733.72
300 <u>Purchased Professional and Technical Services</u>				
324 Professional Educational Services – Employee Training and Development Services		275.00		275.00
Total Purchased Professional and Technical Services		\$275.00		\$275.00
400 <u>Purchased Property Services</u>				
430 Repairs and Maintenance Services		287.81		287.81
Total Purchased Property Services		\$287.81		\$287.81
500 <u>Other Purchased Services</u>				
564 Tuition To Career and Technology Centers		2,314,469.84		2,314,469.84
580 Travel		554.75		554.75
Total Other Purchased Services		\$2,315,024.59		\$2,315,024.59
600 <u>Supplies</u>				
610 General Supplies		3,296.55		3,296.55
Total Supplies		\$3,296.55		\$3,296.55
Total 1300 Vocational Education		\$2,498,971.67		\$2,498,971.67

LEA : 116605003 Mifflinburg Area SD

Printed 11/8/2016 1:26:27 PM

General Fund (10)				
1400 Other Instructional Programs – Elementary / Secondary	<u>Elementary</u>	<u>Secondary</u>	<u>Federal</u>	<u>Total</u>
100 <u>Personnel Services – Salaries</u>				
100 Personnel Services – Salaries	27,001.78	37,602.22	3,941.50	68,545.50
Total Personnel Services – Salaries	\$27,001.78	\$37,602.22	\$3,941.50	\$68,545.50
200 <u>Personnel Services – Employee Benefits</u>				
220 Social Security Contributions	2,056.59	2,867.61	301.53	5,225.73
230 PSERS Retirement Contributions	6,859.78	9,373.04	1,018.49	17,251.31
250 Unemployment Compensation	54.37	125.40	15.81	195.58
260 Workers' Compensation	105.42	146.69	15.37	267.48
Total Personnel Services – Employee Benefits	\$9,076.16	\$12,512.74	\$1,351.20	\$22,940.10
500 <u>Other Purchased Services</u>				
563 Tuition To Nonpublic Schools	8,003.86	46,751.88		54,755.74
580 Travel	316.55	2,077.62		2,394.17
Total Other Purchased Services	\$8,320.41	\$48,829.50		\$57,149.91
Total 1400 Other Instructional Programs – Elementary / Secondary	\$44,398.35	\$98,944.46	\$5,292.70	\$148,635.51

LEA : 116605003 Mifflinburg Area SD

Printed 11/8/2016 1:26:27 PM

General Fund (10)				
1420 Summer School	<u>Elementary</u>	<u>Secondary</u>	<u>Federal</u>	<u>Total</u>
100 <u>Personnel Services – Salaries</u>				
100 Personnel Services – Salaries	22,237.42	14,049.58	3,941.50	40,228.50
Total Personnel Services – Salaries	\$22,237.42	\$14,049.58	\$3,941.50	\$40,228.50
200 <u>Personnel Services – Employee Benefits</u>				
220 Social Security Contributions	1,693.72	1,069.02	301.53	3,064.27
230 PSERS Retirement Contributions	5,631.63	3,291.75	1,018.49	9,941.87
250 Unemployment Compensation	38.41	23.63	15.81	77.85
260 Workers' Compensation	86.81	54.79	15.37	156.97
Total Personnel Services – Employee Benefits	\$7,450.57	\$4,439.19	\$1,351.20	\$13,240.96
Total 1420 Summer School	\$29,687.99	\$18,488.77	\$5,292.70	\$53,469.46

LEA : 116605003 Mifflinburg Area SD

Printed 11/8/2016 1:26:27 PM

General Fund (10)

1430 Homebound Instruction	Elementary	Secondary	Federal	Total
100 <u>Personnel Services – Salaries</u>				
100 Personnel Services – Salaries	4,764.36	23,552.64		28,317.00
Total Personnel Services – Salaries	\$4,764.36	\$23,552.64		\$28,317.00
200 <u>Personnel Services – Employee Benefits</u>				
220 Social Security Contributions	362.87	1,798.59		2,161.46
230 PSERS Retirement Contributions	1,228.15	6,081.29		7,309.44
250 Unemployment Compensation	15.96	101.77		117.73
260 Workers' Compensation	18.61	91.90		110.51
Total Personnel Services – Employee Benefits	\$1,625.59	\$8,073.55		\$9,699.14
500 <u>Other Purchased Services</u>				
580 Travel	316.55	2,077.62		2,394.17
Total Other Purchased Services	\$316.55	\$2,077.62		\$2,394.17
Total 1430 Homebound Instruction	\$6,706.50	\$33,703.81		\$40,410.31

LEA : 116605003 Mifflinburg Area SD

Printed 11/8/2016 1:26:27 PM

General Fund (10)

1440 Alternative Regular Education Programs	<u>Elementary</u>	<u>Secondary</u>	<u>Federal</u>	<u>Total</u>
500 <u>Other Purchased Services</u>				
563 Tuition To Nonpublic Schools	8,003.86	46,751.88		54,755.74
Total Other Purchased Services	\$8,003.86	\$46,751.88		\$54,755.74
Total 1440 Alternative Regular Education Programs	\$8,003.86	\$46,751.88		\$54,755.74

LEA : 116605003 Mifflinburg Area SD

Printed 11/8/2016 1:26:27 PM

General Fund (10)

1442 Alternative Education Programs	<u>Elementary</u>	<u>Secondary</u>	<u>Federal</u>	<u>Total</u>
500 <u>Other Purchased Services</u>				
563 Tuition To Nonpublic Schools	8,003.86	46,751.88		54,755.74
Total Other Purchased Services	\$8,003.86	\$46,751.88		\$54,755.74
Total 1442 Alternative Education Programs	\$8,003.86	\$46,751.88		\$54,755.74

LEA : 116605003 Mifflinburg Area SD

Printed 11/8/2016 1:26:27 PM

General Fund (10)

1600 Adult Education Programs	<u>Elementary</u>	<u>Secondary</u>	<u>Federal</u>	<u>Total</u>
100 <u>Personnel Services – Salaries</u>				
100 Personnel Services – Salaries				3,603.40
Total Personnel Services – Salaries				\$3,603.40
200 <u>Personnel Services – Employee Benefits</u>				
220 Social Security Contributions				275.67
250 Unemployment Compensation				22.35
260 Workers’ Compensation				14.06
Total Personnel Services – Employee Benefits				\$312.08
Total 1600 Adult Education Programs				\$3,915.48

LEA : 116605003 Mifflinburg Area SD

Printed 11/8/2016 1:26:29 PM

General Fund (10)

2000 Support Services		<u>Total</u>
100 <u>Personnel Services – Salaries</u>		
100 Personnel Services – Salaries		2,927,131.81
Total Personnel Services – Salaries		\$2,927,131.81
200 <u>Personnel Services – Employee Benefits</u>		
210 Group Insurance – Contracted Provider		1,001,352.60
220 Social Security Contributions		220,452.42
230 PSERS Retirement Contributions		754,659.54
240 Tuition Reimbursement		12,396.00
250 Unemployment Compensation		4,830.69
260 Workers' Compensation		11,411.35
290 Other Current Employee Benefits		17,735.93
Total Personnel Services – Employee Benefits		\$2,022,838.53
300 <u>Purchased Professional and Technical Services</u>		
310 Official / Administrative Services		2,100.00
322 Professional Educational Services – Ius		63,135.55
324 Professional Educational Services – Employee Training and Development Services		31,025.00
329 Professional Educational Services – Other		500.00
330 Other Professional Services		84,963.82
340 Technical Services		10,176.00
350 Security / Safety Services		12,736.88
390 Other Purchased Professional and Technical Services		7,647.09
Total Purchased Professional and Technical Services		\$212,284.34
400 <u>Purchased Property Services</u>		
410 Cleaning Services		14,218.00
420 Utility Services		547,809.89
430 Repairs and Maintenance Services		33,235.60
440 Rentals		78,662.49
460 Extermination Services		9,669.00
490 Other Purchased Property Services		67,350.20
Total Purchased Property Services		\$750,945.18
500 <u>Other Purchased Services</u>		
513 Contracted Carriers		1,365,000.00
516 Student Transportation Services From the IU		85,671.99
520 Insurance – General		12,838.00
522 Automotive Liability Insurance		5,826.00
523 General Property and Liability Insurance		104,636.00
530 Communications		51,364.58
549 Other Advertising/Public Relations		38,406.30
550 Printing and Binding		20,971.60
580 Travel		22,718.71
591 Services Purchased Locally		3,584.76
Total Other Purchased Services		\$1,711,017.94
600 <u>Supplies</u>		
610 General Supplies		478,774.31

LEA : 116605003 Mifflinburg Area SD

Printed 11/8/2016 1:26:29 PM

General Fund (10)

2000 Support Services

Total

600	<u>Supplies</u>	
620	Energy	73,937.34
640	Books and Periodicals	29,207.19
650	Supplies & Fees – Technology Related	15,875.12
Total Supplies		\$597,793.96
700	<u>Property</u>	
750	Equipment – Original and Additional	2,586.16
760	Equipment – Replacement	176,841.91
Total Property		\$179,428.07
800	<u>Other Objects</u>	
810	Dues and Fees	7,866.40
890	Miscellaneous Expenditures	1,915.00
Total Other Objects		\$9,781.40
Total 2000 Support Services		\$8,411,221.23

LEA : 116605003 Mifflinburg Area SD

Printed 11/8/2016 1:26:29 PM

General Fund (10)

2100 Support Services – Students	Elementary	Secondary	Federal	Total
100 <u>Personnel Services – Salaries</u>				
100 Personnel Services – Salaries	153,991.19	194,446.86	4,098.00	477,991.05
Total Personnel Services – Salaries	\$153,991.19	\$194,446.86	\$4,098.00	\$477,991.05
200 <u>Personnel Services – Employee Benefits</u>				
210 Group Insurance – Contracted Provider	44,234.56	55,035.49		130,472.59
220 Social Security Contributions	11,627.75	14,495.87		35,853.24
230 PSERS Retirement Contributions	39,791.32	50,244.98		123,512.52
240 Tuition Reimbursement		4,086.00		4,086.00
250 Unemployment Compensation	228.62	233.61		609.51
260 Workers' Compensation	600.54	758.48		1,864.03
290 Other Current Employee Benefits				800.00
Total Personnel Services – Employee Benefits	\$96,482.79	\$124,854.43		\$297,197.89
300 <u>Purchased Professional and Technical Services</u>				
322 Professional Educational Services – Ius	32,713.00	26,765.17		63,135.55
324 Professional Educational Services – Employee Training and Development Services	149.02	325.98		1,453.99
330 Other Professional Services	22,267.28	18,218.68		40,485.96
Total Purchased Professional and Technical Services	\$55,129.30	\$45,309.83		\$105,075.50
500 <u>Other Purchased Services</u>				
580 Travel	66.41	113.21		1,409.32
Total Other Purchased Services	\$66.41	\$113.21		\$1,409.32
600 <u>Supplies</u>				
610 General Supplies	18,914.80	13,313.31		32,729.38
Total Supplies	\$18,914.80	\$13,313.31		\$32,729.38
800 <u>Other Objects</u>				
810 Dues and Fees				267.00
Total Other Objects				\$267.00
Total 2100 Support Services – Students	\$324,584.49	\$378,037.64	\$4,098.00	\$914,670.14

LEA : 116605003 Mifflinburg Area SD

Printed 11/8/2016 1:26:29 PM

General Fund (10)				
2120 Guidance Services	<u>Elementary</u>	<u>Secondary</u>	<u>Federal</u>	<u>Total</u>
100 <u>Personnel Services – Salaries</u>				
100 Personnel Services – Salaries	127,406.48	172,695.73		300,102.21
Total Personnel Services – Salaries	\$127,406.48	\$172,695.73		\$300,102.21
200 <u>Personnel Services – Employee Benefits</u>				
210 Group Insurance – Contracted Provider	40,325.16	51,836.89		92,162.05
220 Social Security Contributions	9,594.14	12,832.00		22,426.14
230 PSERS Retirement Contributions	32,921.83	44,624.48		77,546.31
240 Tuition Reimbursement		4,086.00		4,086.00
250 Unemployment Compensation	196.22	207.10		403.32
260 Workers' Compensation	496.85	673.64		1,170.49
Total Personnel Services – Employee Benefits	\$83,534.20	\$114,260.11		\$197,794.31
300 <u>Purchased Professional and Technical Services</u>				
324 Professional Educational Services – Employee Training and Development Services	11.52	213.48		225.00
330 Other Professional Services	22,267.28	18,218.68		40,485.96
Total Purchased Professional and Technical Services	\$22,278.80	\$18,432.16		\$40,710.96
500 <u>Other Purchased Services</u>				
580 Travel		58.87		58.87
Total Other Purchased Services		\$58.87		\$58.87
600 <u>Supplies</u>				
610 General Supplies	13,068.61	8,530.06		21,598.67
Total Supplies	\$13,068.61	\$8,530.06		\$21,598.67
Total 2120 Guidance Services	\$246,288.09	\$313,976.93		\$560,265.02

LEA : 116605003 Mifflinburg Area SD

Printed 11/8/2016 1:26:29 PM

General Fund (10)

2130 Attendance Services

	Elementary	Secondary	Federal	Total
100 <u>Personnel Services – Salaries</u>				
100 Personnel Services – Salaries				38,291.95
Total Personnel Services – Salaries				\$38,291.95
200 <u>Personnel Services – Employee Benefits</u>				
210 Group Insurance – Contracted Provider				4,884.54
220 Social Security Contributions				2,883.96
230 PSERS Retirement Contributions				9,894.55
250 Unemployment Compensation				29.45
260 Workers' Compensation				149.24
290 Other Current Employee Benefits				800.00
Total Personnel Services – Employee Benefits				\$18,641.74
300 <u>Purchased Professional and Technical Services</u>				
324 Professional Educational Services – Employee Training and Development Services				460.00
Total Purchased Professional and Technical Services				\$460.00
500 <u>Other Purchased Services</u>				
580 Travel				815.53
Total Other Purchased Services				\$815.53
600 <u>Supplies</u>				
610 General Supplies				4.23
Total Supplies				\$4.23
800 <u>Other Objects</u>				
810 Dues and Fees				267.00
Total Other Objects				\$267.00
Total 2130 Attendance Services				\$58,480.45

LEA : 116605003 Mifflinburg Area SD

Printed 11/8/2016 1:26:29 PM

General Fund (10)				
2140 Psychological Services	<u>Elementary</u>	<u>Secondary</u>	<u>Federal</u>	<u>Total</u>
100 <u>Personnel Services – Salaries</u>				
100 Personnel Services – Salaries	26,584.71	21,751.13		48,335.84
Total Personnel Services – Salaries	\$26,584.71	\$21,751.13		\$48,335.84
200 <u>Personnel Services – Employee Benefits</u>				
210 Group Insurance – Contracted Provider	3,909.40	3,198.60		7,108.00
220 Social Security Contributions	2,033.61	1,663.87		3,697.48
230 PSERS Retirement Contributions	6,869.49	5,620.50		12,489.99
250 Unemployment Compensation	32.40	26.51		58.91
260 Workers' Compensation	103.69	84.84		188.53
Total Personnel Services – Employee Benefits	\$12,948.59	\$10,594.32		\$23,542.91
300 <u>Purchased Professional and Technical Services</u>				
324 Professional Educational Services – Employee Training and Development Services	137.50	112.50		250.00
Total Purchased Professional and Technical Services	\$137.50	\$112.50		\$250.00
500 <u>Other Purchased Services</u>				
580 Travel	66.41	54.34		120.75
Total Other Purchased Services	\$66.41	\$54.34		\$120.75
600 <u>Supplies</u>				
610 General Supplies	5,846.19	4,783.25		10,629.44
Total Supplies	\$5,846.19	\$4,783.25		\$10,629.44
Total 2140 Psychological Services	\$45,583.40	\$37,295.54		\$82,878.94

LEA : 116605003 Mifflinburg Area SD

Printed 11/8/2016 1:26:29 PM

General Fund (10)

2150 Speech Pathology and Audiology Services	<u>Elementary</u>	<u>Secondary</u>	<u>Federal</u>	<u>Total</u>
300 <u>Purchased Professional and Technical Services</u>				
322 Professional Educational Services – lus	32,713.00	26,765.17		59,478.17
Total Purchased Professional and Technical Services	\$32,713.00	\$26,765.17		\$59,478.17
Total 2150 Speech Pathology and Audiology Services	\$32,713.00	\$26,765.17		\$59,478.17

LEA : 116605003 Mifflinburg Area SD

Printed 11/8/2016 1:26:29 PM

General Fund (10)				
2160 Social Work Services	<u>Elementary</u>	<u>Secondary</u>	<u>Federal</u>	<u>Total</u>
100 <u>Personnel Services – Salaries</u>				
100 Personnel Services – Salaries			4,098.00	91,261.05
Total Personnel Services – Salaries			\$4,098.00	\$91,261.05
200 <u>Personnel Services – Employee Benefits</u>				
210 Group Insurance – Contracted Provider				26,318.00
220 Social Security Contributions				6,845.66
230 PSERS Retirement Contributions				23,581.67
250 Unemployment Compensation				117.83
260 Workers' Compensation				355.77
Total Personnel Services – Employee Benefits				\$57,218.93
300 <u>Purchased Professional and Technical Services</u>				
322 Professional Educational Services – Ius				3,657.38
324 Professional Educational Services – Employee Training and Development Services				518.99
Total Purchased Professional and Technical Services				\$4,176.37
500 <u>Other Purchased Services</u>				
580 Travel				414.17
Total Other Purchased Services				\$414.17
600 <u>Supplies</u>				
610 General Supplies				497.04
Total Supplies				\$497.04
Total 2160 Social Work Services			\$4,098.00	\$153,567.56

LEA : 116605003 Mifflinburg Area SD

Printed 11/8/2016 1:26:29 PM

General Fund (10)

2200 Support Services – Instructional Staff	Elementary	Secondary	Federal	Total
100 Personnel Services – Salaries				
100 Personnel Services – Salaries	289,175.32	231,180.55	108,639.50	628,995.37
Total Personnel Services – Salaries	\$289,175.32	\$231,180.55	\$108,639.50	\$628,995.37
200 Personnel Services – Employee Benefits				
210 Group Insurance – Contracted Provider	78,358.04	63,514.28	21,507.00	163,379.32
220 Social Security Contributions	21,856.34	17,475.52	8,254.68	47,586.54
230 PSERS Retirement Contributions	74,722.96	59,737.07	28,072.41	162,532.44
240 Tuition Reimbursement	885.50	724.50		1,610.00
250 Unemployment Compensation	392.62	316.31	382.54	1,091.47
260 Workers' Compensation	1,128.01	901.80	423.77	2,453.58
290 Other Current Employee Benefits	2,016.67	1,650.01		3,666.68
Total Personnel Services – Employee Benefits	\$179,360.14	\$144,319.49	\$58,640.40	\$382,320.03
300 Purchased Professional and Technical Services				
324 Professional Educational Services – Employee Training and Development Services	12,391.81	11,407.76	2,690.63	26,490.20
390 Other Purchased Professional and Technical Services			1,575.00	1,575.00
Total Purchased Professional and Technical Services	\$12,391.81	\$11,407.76	\$4,265.63	\$28,065.20
400 Purchased Property Services				
430 Repairs and Maintenance Services	4,846.14	3,965.02		8,811.16
Total Purchased Property Services	\$4,846.14	\$3,965.02		\$8,811.16
500 Other Purchased Services				
580 Travel	2,728.65	2,232.53	1,316.25	6,277.43
Total Other Purchased Services	\$2,728.65	\$2,232.53	\$1,316.25	\$6,277.43
600 Supplies				
610 General Supplies	78,348.48	63,294.36	3,589.06	145,231.90
640 Books and Periodicals	17,279.59	11,609.61		28,889.20
650 Supplies & Fees – Technology Related	6,743.71	9,131.41		15,875.12
Total Supplies	\$102,371.78	\$84,035.38	\$3,589.06	\$189,996.22
700 Property				
760 Equipment – Replacement	97,024.14	79,383.38		176,407.52
Total Property	\$97,024.14	\$79,383.38		\$176,407.52
800 Other Objects				
810 Dues and Fees	103.95	85.05		189.00
Total Other Objects	\$103.95	\$85.05		\$189.00
Total 2200 Support Services – Instructional Staff	\$688,001.93	\$556,609.16	\$176,450.84	\$1,421,061.93

LEA : 116605003 Mifflinburg Area SD

Printed 11/8/2016 1:26:29 PM

General Fund (10)

2210 Supervision of Educational Media Services	<u>Elementary</u>	<u>Secondary</u>	<u>Federal</u>	<u>Total</u>
100 <u>Personnel Services – Salaries</u>				
100 Personnel Services – Salaries	57,805.87	47,295.70		105,101.57
Total Personnel Services – Salaries	\$57,805.87	\$47,295.70		\$105,101.57
200 <u>Personnel Services – Employee Benefits</u>				
210 Group Insurance – Contracted Provider	21,967.54	17,973.44		39,940.98
220 Social Security Contributions	4,404.47	3,603.66		8,008.13
230 PSERS Retirement Contributions	14,936.98	12,221.17		27,158.15
250 Unemployment Compensation	64.82	53.03		117.85
260 Workers' Compensation	225.45	184.46		409.91
Total Personnel Services – Employee Benefits	\$41,599.26	\$34,035.76		\$75,635.02
Total 2210 Supervision of Educational Media Services	\$99,405.13	\$81,331.46		\$180,736.59

LEA : 116605003 Mifflinburg Area SD

Printed 11/8/2016 1:26:29 PM

General Fund (10)

2211 Supervision of Educational Media Services – Head of Component	<u>Elementary</u>	<u>Secondary</u>	<u>Federal</u>	<u>Total</u>
100 <u>Personnel Services – Salaries</u>				
100 Personnel Services – Salaries	57,805.87	47,295.70		105,101.57
Total Personnel Services – Salaries	\$57,805.87	\$47,295.70		\$105,101.57
200 <u>Personnel Services – Employee Benefits</u>				
210 Group Insurance – Contracted Provider	21,967.54	17,973.44		39,940.98
220 Social Security Contributions	4,404.47	3,603.66		8,008.13
230 PSERS Retirement Contributions	14,936.98	12,221.17		27,158.15
250 Unemployment Compensation	64.82	53.03		117.85
260 Workers' Compensation	225.45	184.46		409.91
Total Personnel Services – Employee Benefits	\$41,599.26	\$34,035.76		\$75,635.02
Total 2211 Supervision of Educational Media Services – Head of Component	\$99,405.13	\$81,331.46		\$180,736.59

LEA : 116605003 Mifflinburg Area SD

Printed 11/8/2016 1:26:29 PM

General Fund (10)

2220 Technology Support Services	Elementary	Secondary	Federal	Total
100 <u>Personnel Services – Salaries</u>				
100 Personnel Services – Salaries	74,538.23	60,985.84		135,524.07
Total Personnel Services – Salaries	\$74,538.23	\$60,985.84		\$135,524.07
200 <u>Personnel Services – Employee Benefits</u>				
210 Group Insurance – Contracted Provider	22,459.06	18,375.59		40,834.65
220 Social Security Contributions	5,580.58	4,565.92		10,146.50
230 PSERS Retirement Contributions	19,260.86	15,758.88		35,019.74
250 Unemployment Compensation	97.21	79.53		176.74
260 Workers' Compensation	290.72	237.87		528.59
290 Other Current Employee Benefits	880.00	720.00		1,600.00
Total Personnel Services – Employee Benefits	\$48,568.43	\$39,737.79		\$88,306.22
300 <u>Purchased Professional and Technical Services</u>				
324 Professional Educational Services – Employee Training and Development Services	385.99	315.81		701.80
Total Purchased Professional and Technical Services	\$385.99	\$315.81		\$701.80
400 <u>Purchased Property Services</u>				
430 Repairs and Maintenance Services	4,846.14	3,965.02		8,811.16
Total Purchased Property Services	\$4,846.14	\$3,965.02		\$8,811.16
500 <u>Other Purchased Services</u>				
580 Travel	1,177.96	963.78		2,141.74
Total Other Purchased Services	\$1,177.96	\$963.78		\$2,141.74
600 <u>Supplies</u>				
610 General Supplies	63,890.94	52,274.41		116,165.35
650 Supplies & Fees – Technology Related	6,743.71	9,131.41		15,875.12
Total Supplies	\$70,634.65	\$61,405.82		\$132,040.47
700 <u>Property</u>				
760 Equipment – Replacement	97,024.14	79,383.38		176,407.52
Total Property	\$97,024.14	\$79,383.38		\$176,407.52
Total 2220 Technology Support Services	\$297,175.54	\$246,757.44		\$543,932.98

LEA : 116605003 Mifflinburg Area SD

Printed 11/8/2016 1:26:29 PM

General Fund (10)				
2250 School Library Services	<u>Elementary</u>	<u>Secondary</u>	<u>Federal</u>	<u>Total</u>
100 <u>Personnel Services – Salaries</u>				
100 Personnel Services – Salaries	38,606.47	26,169.67	65,935.25	130,711.39
Total Personnel Services – Salaries	\$38,606.47	\$26,169.67	\$65,935.25	\$130,711.39
200 <u>Personnel Services – Employee Benefits</u>				
210 Group Insurance – Contracted Provider	3,994.78	2,671.62	21,507.00	28,173.40
220 Social Security Contributions	2,898.82	1,964.83	5,008.23	9,871.88
230 PSERS Retirement Contributions	9,975.74	6,762.09	17,037.60	33,775.43
250 Unemployment Compensation	35.09	23.79	382.54	441.42
260 Workers' Compensation	150.62	102.10	257.20	509.92
Total Personnel Services – Employee Benefits	\$17,055.05	\$11,524.43	\$44,192.57	\$72,772.05
600 <u>Supplies</u>				
610 General Supplies	4,224.22	2,647.24		6,871.46
640 Books and Periodicals	17,279.59	11,609.61		28,889.20
Total Supplies	\$21,503.81	\$14,256.85		\$35,760.66
Total 2250 School Library Services	\$77,165.33	\$51,950.95	\$110,127.82	\$239,244.10

LEA : 116605003 Mifflinburg Area SD

Printed 11/8/2016 1:26:29 PM

General Fund (10)

2260 Instruction and Curriculum Development Services	<u>Elementary</u>	<u>Secondary</u>	<u>Federal</u>	<u>Total</u>
100 <u>Personnel Services – Salaries</u>				
100 Personnel Services – Salaries	118,224.75	96,729.34	1,904.25	216,858.34
Total Personnel Services – Salaries	\$118,224.75	\$96,729.34	\$1,904.25	\$216,858.34
200 <u>Personnel Services – Employee Benefits</u>				
210 Group Insurance – Contracted Provider	29,936.66	24,493.63		54,430.29
220 Social Security Contributions	8,972.47	7,341.11	145.02	16,458.60
230 PSERS Retirement Contributions	30,549.38	24,994.93	492.09	56,036.40
240 Tuition Reimbursement	885.50	724.50		1,610.00
250 Unemployment Compensation	195.50	159.96		355.46
260 Workers' Compensation	461.22	377.37	7.45	846.04
290 Other Current Employee Benefits	1,136.67	930.01		2,066.68
Total Personnel Services – Employee Benefits	\$72,137.40	\$59,021.51	\$644.56	\$131,803.47
300 <u>Purchased Professional and Technical Services</u>				
324 Professional Educational Services – Employee Training and Development Services	82.50	67.50	15.00	165.00
Total Purchased Professional and Technical Services	\$82.50	\$67.50	\$15.00	\$165.00
500 <u>Other Purchased Services</u>				
580 Travel	1,117.52	914.34		2,031.86
Total Other Purchased Services	\$1,117.52	\$914.34		\$2,031.86
600 <u>Supplies</u>				
610 General Supplies	10,233.32	8,372.71		18,606.03
Total Supplies	\$10,233.32	\$8,372.71		\$18,606.03
800 <u>Other Objects</u>				
810 Dues and Fees	103.95	85.05		189.00
Total Other Objects	\$103.95	\$85.05		\$189.00
Total 2260 Instruction and Curriculum Development Services	\$201,899.44	\$165,190.45	\$2,563.81	\$369,653.70

LEA : 116605003 Mifflinburg Area SD

Printed 11/8/2016 1:26:29 PM

General Fund (10)				
2270 Instructional Staff Professional Development Services	<u>Elementary</u>	<u>Secondary</u>	<u>Federal</u>	<u>Total</u>
100 <u>Personnel Services – Salaries</u>				
100 Personnel Services – Salaries			40,800.00	40,800.00
Total Personnel Services – Salaries			\$40,800.00	\$40,800.00
200 <u>Personnel Services – Employee Benefits</u>				
220 Social Security Contributions			3,101.43	3,101.43
230 PSERS Retirement Contributions			10,542.72	10,542.72
260 Workers’ Compensation			159.12	159.12
Total Personnel Services – Employee Benefits			\$13,803.27	\$13,803.27
300 <u>Purchased Professional and Technical Services</u>				
324 Professional Educational Services – Employee Training and Development Services	11,923.32	11,024.45	2,675.63	25,623.40
390 Other Purchased Professional and Technical Services			1,575.00	1,575.00
Total Purchased Professional and Technical Services	\$11,923.32	\$11,024.45	\$4,250.63	\$27,198.40
500 <u>Other Purchased Services</u>				
580 Travel	433.17	354.41	1,316.25	2,103.83
Total Other Purchased Services	\$433.17	\$354.41	\$1,316.25	\$2,103.83
600 <u>Supplies</u>				
610 General Supplies			3,589.06	3,589.06
Total Supplies			\$3,589.06	\$3,589.06
Total 2270 Instructional Staff Professional Development Services	\$12,356.49	\$11,378.86	\$63,759.21	\$87,494.56

LEA : 116605003 Mifflinburg Area SD

Printed 11/8/2016 1:26:29 PM

General Fund (10)

2300 Support Services – Administration	Elementary	Secondary	Federal	Total
100 <u>Personnel Services – Salaries</u>				
100 Personnel Services – Salaries	305,419.41	340,166.17		800,479.31
Total Personnel Services – Salaries	\$305,419.41	\$340,166.17		\$800,479.31
200 <u>Personnel Services – Employee Benefits</u>				
210 Group Insurance – Contracted Provider	90,817.99	129,058.69		260,423.90
220 Social Security Contributions	23,100.76	25,680.80		60,327.34
230 PSERS Retirement Contributions	78,920.77	87,898.80		206,603.54
240 Tuition Reimbursement		1,635.00		5,008.00
250 Unemployment Compensation	397.38	461.52		976.77
260 Workers' Compensation	1,190.98	1,326.35		3,117.75
290 Other Current Employee Benefits	2,214.40	2,446.48		10,296.15
Total Personnel Services – Employee Benefits	\$196,642.28	\$248,507.64		\$546,753.45
300 <u>Purchased Professional and Technical Services</u>				
310 Official / Administrative Services				2,100.00
324 Professional Educational Services – Employee Training and Development Services	192.38	399.62		1,624.94
329 Professional Educational Services – Other				500.00
330 Other Professional Services				34,224.50
390 Other Purchased Professional and Technical Services				6,072.09
Total Purchased Professional and Technical Services	\$192.38	\$399.62		\$44,521.53
400 <u>Purchased Property Services</u>				
440 Rentals	43,204.50	34,738.86		77,943.36
Total Purchased Property Services	\$43,204.50	\$34,738.86		\$77,943.36
500 <u>Other Purchased Services</u>				
520 Insurance – General				12,838.00
549 Other Advertising/Public Relations				38,406.30
550 Printing and Binding				20,971.60
580 Travel	1,880.69	4,256.56		9,838.02
Total Other Purchased Services	\$1,880.69	\$4,256.56		\$82,053.92
600 <u>Supplies</u>				
610 General Supplies	15,735.25	22,752.11		40,060.36
640 Books and Periodicals				317.99
Total Supplies	\$15,735.25	\$22,752.11		\$40,378.35
800 <u>Other Objects</u>				
810 Dues and Fees	856.16	653.04		6,264.40
Total Other Objects	\$856.16	\$653.04		\$6,264.40
Total 2300 Support Services – Administration	\$563,930.67	\$651,474.00		\$1,598,394.32

LEA : 116605003 Mifflinburg Area SD

Printed 11/8/2016 1:26:29 PM

General Fund (10)				
2310 Board Services				
	<u>Elementary</u>	<u>Secondary</u>	<u>Federal</u>	<u>Total</u>
100 <u>Personnel Services – Salaries</u>				
100 Personnel Services – Salaries				3,003.44
Total Personnel Services – Salaries				\$3,003.44
200 <u>Personnel Services – Employee Benefits</u>				
210 Group Insurance – Contracted Provider				2,150.70
220 Social Security Contributions				226.48
230 PSERS Retirement Contributions				776.08
250 Unemployment Compensation				5.92
260 Workers' Compensation				11.70
Total Personnel Services – Employee Benefits				\$3,170.88
300 <u>Purchased Professional and Technical Services</u>				
310 Official / Administrative Services				2,100.00
330 Other Professional Services				15,000.00
390 Other Purchased Professional and Technical Services				6,072.09
Total Purchased Professional and Technical Services				\$23,172.09
500 <u>Other Purchased Services</u>				
520 Insurance – General				12,838.00
549 Other Advertising/Public Relations				38,406.30
Total Other Purchased Services				\$51,244.30
600 <u>Supplies</u>				
610 General Supplies				82.97
Total Supplies				\$82.97
800 <u>Other Objects</u>				
810 Dues and Fees				490.00
Total Other Objects				\$490.00
Total 2310 Board Services				\$81,163.68

LEA : 116605003 Mifflinburg Area SD

Printed 11/8/2016 1:26:29 PM

General Fund (10)

2330 Tax Assessment and Collection Services	<u>Elementary</u>	<u>Secondary</u>	<u>Federal</u>	<u>Total</u>
100 <u>Personnel Services – Salaries</u>				
100 Personnel Services – Salaries				931.50
Total Personnel Services – Salaries				\$931.50
200 <u>Personnel Services – Employee Benefits</u>				
220 Social Security Contributions				71.28
Total Personnel Services – Employee Benefits				\$71.28
300 <u>Purchased Professional and Technical Services</u>				
330 Other Professional Services				6,343.50
Total Purchased Professional and Technical Services				\$6,343.50
500 <u>Other Purchased Services</u>				
550 Printing and Binding				18,816.60
Total Other Purchased Services				\$18,816.60
600 <u>Supplies</u>				
610 General Supplies				55.62
Total Supplies				\$55.62
Total 2330 Tax Assessment and Collection Services				\$26,218.50

LEA : 116605003 Mifflinburg Area SD

Printed 11/8/2016 1:26:29 PM

General Fund (10)				
2350 Legal and Accounting Services	<u>Elementary</u>	<u>Secondary</u>	<u>Federal</u>	<u>Total</u>
300 <u>Purchased Professional and Technical Services</u>				
330 Other Professional Services				12,881.00
Total Purchased Professional and Technical Services				\$12,881.00
500 <u>Other Purchased Services</u>				
580 Travel				1,580.28
Total Other Purchased Services				\$1,580.28
Total 2350 Legal and Accounting Services				\$14,461.28

LEA : 116605003 Mifflinburg Area SD

Printed 11/8/2016 1:26:29 PM

General Fund (10)

2360 Office of the Superintendent / Executive Director Services	<u>Elementary</u>	<u>Secondary</u>	<u>Federal</u>	<u>Total</u>
100 <u>Personnel Services – Salaries</u>				
100 Personnel Services – Salaries				150,958.79
Total Personnel Services – Salaries				\$150,958.79
200 <u>Personnel Services – Employee Benefits</u>				
210 Group Insurance – Contracted Provider				38,396.52
220 Social Security Contributions				11,248.02
230 PSERS Retirement Contributions				39,007.89
240 Tuition Reimbursement				3,373.00
250 Unemployment Compensation				111.95
260 Workers' Compensation				588.72
290 Other Current Employee Benefits				5,635.27
Total Personnel Services – Employee Benefits				\$98,361.37
300 <u>Purchased Professional and Technical Services</u>				
324 Professional Educational Services – Employee Training and Development Services				1,032.94
329 Professional Educational Services – Other				500.00
Total Purchased Professional and Technical Services				\$1,532.94
500 <u>Other Purchased Services</u>				
580 Travel				2,120.49
Total Other Purchased Services				\$2,120.49
600 <u>Supplies</u>				
610 General Supplies				1,434.41
640 Books and Periodicals				317.99
Total Supplies				\$1,752.40
800 <u>Other Objects</u>				
810 Dues and Fees				4,265.20
Total Other Objects				\$4,265.20
Total 2360 Office of the Superintendent / Executive Director Services				\$258,991.19

LEA : 116605003 Mifflinburg Area SD

Printed 11/8/2016 1:26:29 PM

General Fund (10)

2370 Community Relations Services

<u>Elementary</u>	<u>Secondary</u>	<u>Federal</u>	<u>Total</u>
-------------------	------------------	----------------	--------------

500 Other Purchased Services

550 Printing and Binding			2,155.00
--------------------------	--	--	----------

Total Other Purchased Services			\$2,155.00
---------------------------------------	--	--	-------------------

Total 2370 Community Relations Services			\$2,155.00
--	--	--	-------------------

LEA : 116605003 Mifflinburg Area SD

Printed 11/8/2016 1:26:29 PM

General Fund (10)

2380 Office of the Principal Services	Elementary	Secondary	Federal	Total
100 <u>Personnel Services – Salaries</u>				
100 Personnel Services – Salaries	305,419.41	340,166.17		645,585.58
Total Personnel Services – Salaries	\$305,419.41	\$340,166.17		\$645,585.58
200 <u>Personnel Services – Employee Benefits</u>				
210 Group Insurance – Contracted Provider	90,817.99	129,058.69		219,876.68
220 Social Security Contributions	23,100.76	25,680.80		48,781.56
230 PSERS Retirement Contributions	78,920.77	87,898.80		166,819.57
240 Tuition Reimbursement		1,635.00		1,635.00
250 Unemployment Compensation	397.38	461.52		858.90
260 Workers' Compensation	1,190.98	1,326.35		2,517.33
290 Other Current Employee Benefits	2,214.40	2,446.48		4,660.88
Total Personnel Services – Employee Benefits	\$196,642.28	\$248,507.64		\$445,149.92
300 <u>Purchased Professional and Technical Services</u>				
324 Professional Educational Services – Employee Training and Development Services	192.38	399.62		592.00
Total Purchased Professional and Technical Services	\$192.38	\$399.62		\$592.00
400 <u>Purchased Property Services</u>				
440 Rentals	43,204.50	34,738.86		77,943.36
Total Purchased Property Services	\$43,204.50	\$34,738.86		\$77,943.36
500 <u>Other Purchased Services</u>				
580 Travel	1,880.69	4,256.56		6,137.25
Total Other Purchased Services	\$1,880.69	\$4,256.56		\$6,137.25
600 <u>Supplies</u>				
610 General Supplies	15,735.25	22,752.11		38,487.36
Total Supplies	\$15,735.25	\$22,752.11		\$38,487.36
800 <u>Other Objects</u>				
810 Dues and Fees	856.16	653.04		1,509.20
Total Other Objects	\$856.16	\$653.04		\$1,509.20
Total 2380 Office of the Principal Services	\$563,930.67	\$651,474.00		\$1,215,404.67

LEA : 116605003 Mifflinburg Area SD

Printed 11/8/2016 1:26:29 PM

General Fund (10)				
2400 Support Services – Pupil Health	<u>Elementary</u>	<u>Secondary</u>	<u>Federal</u>	<u>Total</u>
100 <u>Personnel Services – Salaries</u>				
100 Personnel Services – Salaries				123,438.72
Total Personnel Services – Salaries				\$123,438.72
200 <u>Personnel Services – Employee Benefits</u>				
210 Group Insurance – Contracted Provider				41,516.80
220 Social Security Contributions				9,371.63
230 PSERS Retirement Contributions				31,896.55
240 Tuition Reimbursement				1,692.00
250 Unemployment Compensation				328.47
260 Workers' Compensation				481.50
Total Personnel Services – Employee Benefits				\$85,286.95
300 <u>Purchased Professional and Technical Services</u>				
324 Professional Educational Services – Employee Training and Development Services				60.00
330 Other Professional Services				10,253.36
Total Purchased Professional and Technical Services				\$10,313.36
500 <u>Other Purchased Services</u>				
580 Travel				149.24
Total Other Purchased Services				\$149.24
600 <u>Supplies</u>				
610 General Supplies				2,736.39
Total Supplies				\$2,736.39
Total 2400 Support Services – Pupil Health				\$221,924.66

LEA : 116605003 Mifflinburg Area SD

Printed 11/8/2016 1:26:29 PM

General Fund (10)

2440 Nursing Services

	<u>Elementary</u>	<u>Secondary</u>	<u>Federal</u>	<u>Total</u>
100 <u>Personnel Services – Salaries</u>				
100 Personnel Services – Salaries				123,438.72
Total Personnel Services – Salaries				\$123,438.72
200 <u>Personnel Services – Employee Benefits</u>				
210 Group Insurance – Contracted Provider				41,516.80
220 Social Security Contributions				9,371.63
230 PSERS Retirement Contributions				31,896.55
240 Tuition Reimbursement				1,692.00
250 Unemployment Compensation				328.47
260 Workers' Compensation				481.50
Total Personnel Services – Employee Benefits				\$85,286.95
300 <u>Purchased Professional and Technical Services</u>				
324 Professional Educational Services – Employee Training and Development Services				60.00
330 Other Professional Services				10,253.36
Total Purchased Professional and Technical Services				\$10,313.36
500 <u>Other Purchased Services</u>				
580 Travel				149.24
Total Other Purchased Services				\$149.24
600 <u>Supplies</u>				
610 General Supplies				2,736.39
Total Supplies				\$2,736.39
Total 2440 Nursing Services				\$221,924.66

LEA : 116605003 Mifflinburg Area SD

Printed 11/8/2016 1:26:29 PM

General Fund (10)				
2500 Support Services – Business	Elementary	Secondary	Federal	Total
100 Personnel Services – Salaries				
100 Personnel Services – Salaries				168,772.19
Total Personnel Services – Salaries				\$168,772.19
200 Personnel Services – Employee Benefits				
210 Group Insurance – Contracted Provider				80,411.74
220 Social Security Contributions				12,633.37
230 PSERS Retirement Contributions				43,610.84
250 Unemployment Compensation				235.67
260 Workers' Compensation				657.97
290 Other Current Employee Benefits				2,300.00
Total Personnel Services – Employee Benefits				\$139,849.59
300 Purchased Professional and Technical Services				
324 Professional Educational Services – Employee Training and Development Services				846.82
Total Purchased Professional and Technical Services				\$846.82
400 Purchased Property Services				
430 Repairs and Maintenance Services				215.62
440 Rentals				719.13
Total Purchased Property Services				\$934.75
500 Other Purchased Services				
580 Travel				1,996.78
591 Services Purchased Locally				3,584.76
Total Other Purchased Services				\$5,581.54
600 Supplies				
610 General Supplies				10,187.52
Total Supplies				\$10,187.52
800 Other Objects				
810 Dues and Fees				594.00
890 Miscellaneous Expenditures				1,500.00
Total Other Objects				\$2,094.00
Total 2500 Support Services – Business				\$328,266.41

LEA : 116605003 Mifflinburg Area SD

Printed 11/8/2016 1:26:29 PM

General Fund (10)				
2510 Fiscal Services				
	<u>Elementary</u>	<u>Secondary</u>	<u>Federal</u>	<u>Total</u>
100 <u>Personnel Services – Salaries</u>				
100 Personnel Services – Salaries				168,772.19
Total Personnel Services – Salaries				\$168,772.19
200 <u>Personnel Services – Employee Benefits</u>				
210 Group Insurance – Contracted Provider				80,411.74
220 Social Security Contributions				12,633.37
230 PSERS Retirement Contributions				43,610.84
250 Unemployment Compensation				235.67
260 Workers' Compensation				657.97
290 Other Current Employee Benefits				2,300.00
Total Personnel Services – Employee Benefits				\$139,849.59
300 <u>Purchased Professional and Technical Services</u>				
324 Professional Educational Services – Employee Training and Development Services				846.82
Total Purchased Professional and Technical Services				\$846.82
400 <u>Purchased Property Services</u>				
430 Repairs and Maintenance Services				215.62
440 Rentals				719.13
Total Purchased Property Services				\$934.75
500 <u>Other Purchased Services</u>				
580 Travel				1,996.78
591 Services Purchased Locally				3,584.76
Total Other Purchased Services				\$5,581.54
600 <u>Supplies</u>				
610 General Supplies				10,187.52
Total Supplies				\$10,187.52
800 <u>Other Objects</u>				
810 Dues and Fees				594.00
890 Miscellaneous Expenditures				1,500.00
Total Other Objects				\$2,094.00
Total 2510 Fiscal Services				\$328,266.41

LEA : 116605003 Mifflinburg Area SD

Printed 11/8/2016 1:26:29 PM

General Fund (10)				
2511 Supervision of Fiscal Services - Head of Component	<u>Elementary</u>	<u>Secondary</u>	<u>Federal</u>	<u>Total</u>
100 <u>Personnel Services – Salaries</u>				
100 Personnel Services – Salaries				96,808.70
Total Personnel Services – Salaries				\$96,808.70
200 <u>Personnel Services – Employee Benefits</u>				
210 Group Insurance – Contracted Provider				21,627.74
220 Social Security Contributions				7,373.17
230 PSERS Retirement Contributions				25,015.47
250 Unemployment Compensation				58.89
260 Workers' Compensation				377.43
290 Other Current Employee Benefits				2,300.00
Total Personnel Services – Employee Benefits				\$56,752.70
300 <u>Purchased Professional and Technical Services</u>				
324 Professional Educational Services – Employee Training and Development Services				846.82
Total Purchased Professional and Technical Services				\$846.82
400 <u>Purchased Property Services</u>				
430 Repairs and Maintenance Services				215.62
440 Rentals				719.13
Total Purchased Property Services				\$934.75
500 <u>Other Purchased Services</u>				
580 Travel				1,996.78
591 Services Purchased Locally				3,584.76
Total Other Purchased Services				\$5,581.54
600 <u>Supplies</u>				
610 General Supplies				9,476.12
Total Supplies				\$9,476.12
800 <u>Other Objects</u>				
810 Dues and Fees				594.00
890 Miscellaneous Expenditures				1,500.00
Total Other Objects				\$2,094.00
Total 2511 Supervision of Fiscal Services - Head of Component				\$172,494.63

LEA : 116605003 Mifflinburg Area SD

Printed 11/8/2016 1:26:29 PM

General Fund (10)

2513 Receiving and Disbursing Funds Services

Elementary Secondary Federal Total

100 <u>Personnel Services – Salaries</u>				
100 Personnel Services – Salaries				49,911.00
Total Personnel Services – Salaries				\$49,911.00
200 <u>Personnel Services – Employee Benefits</u>				
210 Group Insurance – Contracted Provider				37,697.00
220 Social Security Contributions				3,651.31
230 PSERS Retirement Contributions				12,897.00
250 Unemployment Compensation				117.87
260 Workers' Compensation				194.48
Total Personnel Services – Employee Benefits				\$54,557.66
600 <u>Supplies</u>				
610 General Supplies				685.29
Total Supplies				\$685.29
Total 2513 Receiving and Disbursing Funds Services				\$105,153.95

LEA : 116605003 Mifflinburg Area SD

Printed 11/8/2016 1:26:29 PM

General Fund (10)					
2514 Payroll Services		<u>Elementary</u>	<u>Secondary</u>	<u>Federal</u>	<u>Total</u>
100 <u>Personnel Services – Salaries</u>					
100 Personnel Services – Salaries					22,052.49
Total Personnel Services – Salaries					\$22,052.49
200 <u>Personnel Services – Employee Benefits</u>					
210 Group Insurance – Contracted Provider					21,087.00
220 Social Security Contributions					1,608.89
230 PSERS Retirement Contributions					5,698.37
250 Unemployment Compensation					58.91
260 Workers' Compensation					86.06
Total Personnel Services – Employee Benefits					\$28,539.23
600 <u>Supplies</u>					
610 General Supplies					26.11
Total Supplies					\$26.11
Total 2514 Payroll Services					\$50,617.83

LEA : 116605003 Mifflinburg Area SD

Printed 11/8/2016 1:26:29 PM

General Fund (10)				
2600 Operation and Maintenance of Plant Services	<u>Elementary</u>	<u>Secondary</u>	<u>Federal</u>	<u>Total</u>
100 <u>Personnel Services – Salaries</u>				
100 Personnel Services – Salaries				660,584.59
Total Personnel Services – Salaries				\$660,584.59
200 <u>Personnel Services – Employee Benefits</u>				
210 Group Insurance – Contracted Provider				318,520.14
220 Social Security Contributions				49,630.24
230 PSERS Retirement Contributions				169,224.26
250 Unemployment Compensation				1,454.03
260 Workers' Compensation				2,575.74
290 Other Current Employee Benefits				673.10
Total Personnel Services – Employee Benefits				\$542,077.51
300 <u>Purchased Professional and Technical Services</u>				
324 Professional Educational Services – Employee Training and Development Services				549.05
340 Technical Services				10,176.00
350 Security / Safety Services				12,736.88
Total Purchased Professional and Technical Services				\$23,461.93
400 <u>Purchased Property Services</u>				
410 Cleaning Services				14,218.00
420 Utility Services				538,705.90
430 Repairs and Maintenance Services				23,190.42
460 Extermination Services				9,669.00
490 Other Purchased Property Services				67,350.20
Total Purchased Property Services				\$653,133.52
500 <u>Other Purchased Services</u>				
522 Automotive Liability Insurance				5,826.00
523 General Property and Liability Insurance				104,636.00
530 Communications				51,364.58
580 Travel				2,447.92
Total Other Purchased Services				\$164,274.50
600 <u>Supplies</u>				
610 General Supplies	130,892.36	112,362.60		243,254.96
620 Energy				73,937.34
Total Supplies				\$317,192.30
700 <u>Property</u>				
750 Equipment – Original and Additional				2,586.16
760 Equipment – Replacement				434.39
Total Property				\$3,020.55
800 <u>Other Objects</u>				
890 Miscellaneous Expenditures				355.00
Total Other Objects				\$355.00
Total 2600 Operation and Maintenance of Plant Services	\$130,892.36	\$112,362.60		\$2,364,099.90

LEA : 116605003 Mifflinburg Area SD

Printed 11/8/2016 1:26:29 PM

General Fund (10)

2610 Supervision of Operation and Maintenance of Plant Services	<u>Elementary</u>	<u>Secondary</u>	<u>Federal</u>	<u>Total</u>
100 <u>Personnel Services – Salaries</u>				
100 Personnel Services – Salaries				59,286.24
Total Personnel Services – Salaries				\$59,286.24
200 <u>Personnel Services – Employee Benefits</u>				
210 Group Insurance – Contracted Provider				19,747.64
220 Social Security Contributions				4,503.14
230 PSERS Retirement Contributions				15,319.46
250 Unemployment Compensation				58.91
260 Workers' Compensation				231.14
290 Other Current Employee Benefits				673.10
Total Personnel Services – Employee Benefits				\$40,533.39
500 <u>Other Purchased Services</u>				
580 Travel				2,447.92
Total Other Purchased Services				\$2,447.92
Total 2610 Supervision of Operation and Maintenance of Plant Services				\$102,267.55

LEA : 116605003 Mifflinburg Area SD

Printed 11/8/2016 1:26:29 PM

General Fund (10)

2611 Supervision of Operation and Maintenance of Plant Services – Head of Component	<u>Elementary</u>	<u>Secondary</u>	<u>Federal</u>	<u>Total</u>
100 <u>Personnel Services – Salaries</u>				
100 Personnel Services – Salaries				59,286.24
Total Personnel Services – Salaries				\$59,286.24
200 <u>Personnel Services – Employee Benefits</u>				
210 Group Insurance – Contracted Provider				19,747.64
220 Social Security Contributions				4,503.14
230 PSERS Retirement Contributions				15,319.46
250 Unemployment Compensation				58.91
260 Workers' Compensation				231.14
290 Other Current Employee Benefits				673.10
Total Personnel Services – Employee Benefits				\$40,533.39
500 <u>Other Purchased Services</u>				
580 Travel				2,447.92
Total Other Purchased Services				\$2,447.92
Total 2611 Supervision of Operation and Maintenance of Plant Services – Head of Component				\$102,267.55

LEA : 116605003 Mifflinburg Area SD

Printed 11/8/2016 1:26:29 PM

General Fund (10)				
2620 Operation of Buildings Services	<u>Elementary</u>	<u>Secondary</u>	<u>Federal</u>	<u>Total</u>
100 <u>Personnel Services – Salaries</u>				
100 Personnel Services – Salaries				601,298.35
Total Personnel Services – Salaries				\$601,298.35
200 <u>Personnel Services – Employee Benefits</u>				
210 Group Insurance – Contracted Provider				298,772.50
220 Social Security Contributions				45,127.10
230 PSERS Retirement Contributions				153,904.80
250 Unemployment Compensation				1,395.12
260 Workers' Compensation				2,344.60
Total Personnel Services – Employee Benefits				\$501,544.12
300 <u>Purchased Professional and Technical Services</u>				
324 Professional Educational Services – Employee Training and Development Services				549.05
340 Technical Services				10,176.00
350 Security / Safety Services				12,736.88
Total Purchased Professional and Technical Services				\$23,461.93
400 <u>Purchased Property Services</u>				
410 Cleaning Services				14,218.00
420 Utility Services				538,705.90
430 Repairs and Maintenance Services				23,190.42
460 Extermination Services				9,669.00
490 Other Purchased Property Services				67,350.20
Total Purchased Property Services				\$653,133.52
500 <u>Other Purchased Services</u>				
522 Automotive Liability Insurance				5,826.00
523 General Property and Liability Insurance				104,636.00
530 Communications				51,364.58
Total Other Purchased Services				\$161,826.58
600 <u>Supplies</u>				
610 General Supplies	130,892.36	112,362.60		243,254.96
620 Energy				73,937.34
Total Supplies	\$130,892.36	\$112,362.60		\$317,192.30
700 <u>Property</u>				
750 Equipment – Original and Additional				2,586.16
760 Equipment – Replacement				434.39
Total Property				\$3,020.55
800 <u>Other Objects</u>				
890 Miscellaneous Expenditures				355.00
Total Other Objects				\$355.00
Total 2620 Operation of Buildings Services	\$130,892.36	\$112,362.60		\$2,261,832.35

LEA : 116605003 Mifflinburg Area SD

Printed 11/8/2016 1:26:29 PM

General Fund (10)				
2700 Student Transportation Services	<u>Elementary</u>	<u>Secondary</u>	<u>Federal</u>	<u>Total</u>
100 <u>Personnel Services – Salaries</u>				
100 Personnel Services – Salaries			26,210.53	66,870.58
Total Personnel Services – Salaries			\$26,210.53	\$66,870.58
200 <u>Personnel Services – Employee Benefits</u>				
210 Group Insurance – Contracted Provider				6,628.11
220 Social Security Contributions			1,997.18	5,050.06
230 PSERS Retirement Contributions			6,772.81	17,279.39
250 Unemployment Compensation			99.48	134.77
260 Workers' Compensation			102.18	260.78
Total Personnel Services – Employee Benefits			\$8,971.65	\$29,353.11
400 <u>Purchased Property Services</u>				
420 Utility Services				9,103.99
430 Repairs and Maintenance Services				1,018.40
Total Purchased Property Services				\$10,122.39
500 <u>Other Purchased Services</u>				
513 Contracted Carriers				1,365,000.00
516 Student Transportation Services From the IU				85,671.99
Total Other Purchased Services				\$1,450,671.99
600 <u>Supplies</u>				
610 General Supplies				4,573.80
Total Supplies				\$4,573.80
800 <u>Other Objects</u>				
890 Miscellaneous Expenditures				60.00
Total Other Objects				\$60.00
Total 2700 Student Transportation Services			\$35,182.18	\$1,561,651.87

LEA : 116605003 Mifflinburg Area SD

Printed 11/8/2016 1:26:29 PM

General Fund (10)				
2710 Supervision of Student Transportation Services	<u>Elementary</u>	<u>Secondary</u>	<u>Federal</u>	<u>Total</u>
100 <u>Personnel Services – Salaries</u>				
100 Personnel Services – Salaries				40,660.05
Total Personnel Services – Salaries				\$40,660.05
200 <u>Personnel Services – Employee Benefits</u>				
210 Group Insurance – Contracted Provider				6,628.11
220 Social Security Contributions				3,052.88
230 PSERS Retirement Contributions				10,506.58
250 Unemployment Compensation				35.29
260 Workers' Compensation				158.60
Total Personnel Services – Employee Benefits				\$20,381.46
400 <u>Purchased Property Services</u>				
420 Utility Services				8,734.96
430 Repairs and Maintenance Services				1,018.40
Total Purchased Property Services				\$9,753.36
600 <u>Supplies</u>				
610 General Supplies				4,502.72
Total Supplies				\$4,502.72
800 <u>Other Objects</u>				
890 Miscellaneous Expenditures				60.00
Total Other Objects				\$60.00
Total 2710 Supervision of Student Transportation Services				\$75,357.59

LEA : 116605003 Mifflinburg Area SD

Printed 11/8/2016 1:26:29 PM

General Fund (10)				
2711 Supervision of Student Transportation Services – Head of Component	<u>Elementary</u>	<u>Secondary</u>	<u>Federal</u>	<u>Total</u>
100 <u>Personnel Services – Salaries</u>				
100 Personnel Services – Salaries				40,660.05
Total Personnel Services – Salaries				\$40,660.05
200 <u>Personnel Services – Employee Benefits</u>				
210 Group Insurance – Contracted Provider				6,628.11
220 Social Security Contributions				3,052.88
230 PSERS Retirement Contributions				10,506.58
250 Unemployment Compensation				35.29
260 Workers' Compensation				158.60
Total Personnel Services – Employee Benefits				\$20,381.46
400 <u>Purchased Property Services</u>				
420 Utility Services				8,734.96
430 Repairs and Maintenance Services				1,018.40
Total Purchased Property Services				\$9,753.36
600 <u>Supplies</u>				
610 General Supplies				4,502.72
Total Supplies				\$4,502.72
800 <u>Other Objects</u>				
890 Miscellaneous Expenditures				60.00
Total Other Objects				\$60.00
Total 2711 Supervision of Student Transportation Services – Head of Component				\$75,357.59

LEA : 116605003 Mifflinburg Area SD

Printed 11/8/2016 1:26:29 PM

General Fund (10)				
2720 Vehicle Operation Services	<u>Elementary</u>	<u>Secondary</u>	<u>Federal</u>	<u>Total</u>
400 <u>Purchased Property Services</u>				
420 Utility Services				369.03
Total Purchased Property Services				\$369.03
500 <u>Other Purchased Services</u>				
513 Contracted Carriers				1,192,042.00
516 Student Transportation Services From the IU				85,671.99
Total Other Purchased Services				\$1,277,713.99
600 <u>Supplies</u>				
610 General Supplies				71.08
Total Supplies				\$71.08
Total 2720 Vehicle Operation Services				\$1,278,154.10

LEA : 116605003 Mifflinburg Area SD

Printed 11/8/2016 1:26:29 PM

General Fund (10)

2730 Monitoring Services

	<u>Elementary</u>	<u>Secondary</u>	<u>Federal</u>	<u>Total</u>
100 <u>Personnel Services – Salaries</u>				
100 Personnel Services – Salaries			26,210.53	26,210.53
Total Personnel Services – Salaries			\$26,210.53	\$26,210.53
200 <u>Personnel Services – Employee Benefits</u>				
220 Social Security Contributions			1,997.18	1,997.18
230 PSERS Retirement Contributions			6,772.81	6,772.81
250 Unemployment Compensation			99.48	99.48
260 Workers' Compensation			102.18	102.18
Total Personnel Services – Employee Benefits			\$8,971.65	\$8,971.65
Total 2730 Monitoring Services			\$35,182.18	\$35,182.18

LEA : 116605003 Mifflinburg Area SD

Printed 11/8/2016 1:26:29 PM

General Fund (10)

2750 Nonpublic Transportation	<u>Elementary</u>	<u>Secondary</u>	<u>Federal</u>	<u>Total</u>
500 <u>Other Purchased Services</u>				
513 Contracted Carriers				172,958.00
Total Other Purchased Services				\$172,958.00
Total 2750 Nonpublic Transportation				\$172,958.00

LEA : 116605003 Mifflinburg Area SD

Printed 11/8/2016 1:26:29 PM

General Fund (10)				
2800 Support Services – Central	<u>Elementary</u>	<u>Secondary</u>	<u>Federal</u>	<u>Total</u>
500 <u>Other Purchased Services</u>				
580 Travel				600.00
Total Other Purchased Services				\$600.00
800 <u>Other Objects</u>				
810 Dues and Fees				552.00
Total Other Objects				\$552.00
Total 2800 Support Services – Central				\$1,152.00

LEA : 116605003 Mifflinburg Area SD

Printed 11/8/2016 1:26:29 PM

General Fund (10)

2830 Staff Services

Elementary Secondary Federal Total

500 Other Purchased Services

580 Travel 600.00

Total Other Purchased Services \$600.00

800 Other Objects

810 Dues and Fees 552.00

Total Other Objects \$552.00

Total 2830 Staff Services \$1,152.00

LEA : 116605003 Mifflinburg Area SD

Printed 11/8/2016 1:26:29 PM

General Fund (10)

2831 Supervision of Staff Services	<u>Elementary</u>	<u>Secondary</u>	<u>Federal</u>	<u>Total</u>
500 <u>Other Purchased Services</u>				
580 Travel				600.00
Total Other Purchased Services				\$600.00
800 <u>Other Objects</u>				
810 Dues and Fees				552.00
Total Other Objects				\$552.00
Total 2831 Supervision of Staff Services				\$1,152.00

LEA : 116605003 Mifflinburg Area SD

Printed 11/8/2016 1:26:32 PM

General Fund (10)	
3000 Operation of Non-Instructional Services	<u>Total</u>
100 <u>Personnel Services – Salaries</u>	
100 Personnel Services – Salaries	237,468.46
Total Personnel Services – Salaries	\$237,468.46
200 <u>Personnel Services – Employee Benefits</u>	
220 Social Security Contributions	17,651.31
230 PSERS Retirement Contributions	36,886.21
250 Unemployment Compensation	873.18
260 Workers’ Compensation	903.15
Total Personnel Services – Employee Benefits	\$56,313.85
300 <u>Purchased Professional and Technical Services</u>	
330 Other Professional Services	39,095.00
390 Other Purchased Professional and Technical Services	46,264.99
Total Purchased Professional and Technical Services	\$85,359.99
400 <u>Purchased Property Services</u>	
430 Repairs and Maintenance Services	365.00
Total Purchased Property Services	\$365.00
500 <u>Other Purchased Services</u>	
510 Student Transportation Services	48,778.79
520 Insurance – General	10,157.00
580 Travel	7,900.17
Total Other Purchased Services	\$66,835.96
600 <u>Supplies</u>	
610 General Supplies	96,979.85
Total Supplies	\$96,979.85
800 <u>Other Objects</u>	
810 Dues and Fees	2,042.50
890 Miscellaneous Expenditures	2,946.00
Total Other Objects	\$4,988.50
Total 3000 Operation of Non-Instructional Services	\$548,311.61

LEA : 116605003 Mifflinburg Area SD

Printed 11/8/2016 1:26:32 PM

General Fund (10)				
3200 Student Activities	<u>Elementary</u>	<u>Secondary</u>	<u>Federal</u>	<u>Total</u>
100 <u>Personnel Services – Salaries</u>				
100 Personnel Services – Salaries				232,777.22
Total Personnel Services – Salaries				\$232,777.22
200 <u>Personnel Services – Employee Benefits</u>				
220 Social Security Contributions				17,303.57
230 PSERS Retirement Contributions				35,702.86
250 Unemployment Compensation				872.19
260 Workers' Compensation				885.33
Total Personnel Services – Employee Benefits				\$54,763.95
300 <u>Purchased Professional and Technical Services</u>				
330 Other Professional Services				39,095.00
390 Other Purchased Professional and Technical Services				45,864.99
Total Purchased Professional and Technical Services				\$84,959.99
400 <u>Purchased Property Services</u>				
430 Repairs and Maintenance Services				365.00
Total Purchased Property Services				\$365.00
500 <u>Other Purchased Services</u>				
510 Student Transportation Services				48,778.79
520 Insurance – General				10,157.00
580 Travel				7,900.17
Total Other Purchased Services				\$66,835.96
600 <u>Supplies</u>				
610 General Supplies				94,054.99
Total Supplies				\$94,054.99
800 <u>Other Objects</u>				
810 Dues and Fees				2,042.50
890 Miscellaneous Expenditures				2,946.00
Total Other Objects				\$4,988.50
Total 3200 Student Activities				\$538,745.61

LEA : 116605003 Mifflinburg Area SD

Printed 11/8/2016 1:26:32 PM

General Fund (10)				
3300 Community Services	<u>Elementary</u>	<u>Secondary</u>	<u>Federal</u>	<u>Total</u>
100 <u>Personnel Services – Salaries</u>				
100 Personnel Services – Salaries			4,691.24	4,691.24
Total Personnel Services – Salaries			\$4,691.24	\$4,691.24
200 <u>Personnel Services – Employee Benefits</u>				
220 Social Security Contributions			347.74	347.74
230 PSERS Retirement Contributions			1,183.35	1,183.35
250 Unemployment Compensation			0.99	0.99
260 Workers' Compensation			17.82	17.82
Total Personnel Services – Employee Benefits			\$1,549.90	\$1,549.90
300 <u>Purchased Professional and Technical Services</u>				
390 Other Purchased Professional and Technical Services			400.00	400.00
Total Purchased Professional and Technical Services			\$400.00	\$400.00
600 <u>Supplies</u>				
610 General Supplies			2,924.86	2,924.86
Total Supplies			\$2,924.86	\$2,924.86
Total 3300 Community Services			\$9,566.00	\$9,566.00

LEA : 116605003 Mifflinburg Area SD

Printed 11/8/2016 1:26:33 PM

General Fund (10)

5000 Other Expenditures and Financing Uses

Total

800 <u>Other Objects</u>	
830 Interest	803,590.30
Total Other Objects	\$803,590.30
900 <u>Other Uses of Funds</u>	
910 Redemption of Principal	450,000.00
930 Fund Transfers	1,608.15
932 Capital Reserve Fund Transfers Applicable To Fund 32	382,540.00
Total Other Uses of Funds	\$834,148.15
Total 5000 Other Expenditures and Financing Uses	\$1,637,738.45

LEA : 116605003 Mifflinburg Area SD

Printed 11/8/2016 1:26:33 PM

General Fund (10)

5100 Debt Service / Other Expenditures and Financing Uses	<u>Elementary</u>	<u>Secondary</u>	<u>Federal</u>	<u>Total</u>
800 <u>Other Objects</u>				
830 Interest				803,590.30
Total Other Objects				\$803,590.30
900 <u>Other Uses of Funds</u>				
910 Redemption of Principal				450,000.00
Total Other Uses of Funds				\$450,000.00
Total 5100 Debt Service / Other Expenditures and Financing Uses				\$1,253,590.30

LEA : 116605003 Mifflinburg Area SD

Printed 11/8/2016 1:26:33 PM

General Fund (10)

5110 Debt Service	<u>Elementary</u>	<u>Secondary</u>	<u>Federal</u>	<u>Total</u>
800 <u>Other Objects</u>				
830 Interest				803,590.30
Total Other Objects				\$803,590.30
900 <u>Other Uses of Funds</u>				
910 Redemption of Principal				450,000.00
Total Other Uses of Funds				\$450,000.00
Total 5110 Debt Service				\$1,253,590.30

LEA : 116605003 Mifflinburg Area SD

Printed 11/8/2016 1:26:33 PM

General Fund (10)

5200 Interfund Transfers – Out	<u>Elementary</u>	<u>Secondary</u>	<u>Federal</u>	<u>Total</u>
900 <u>Other Uses of Funds</u>				
930 Fund Transfers				1,608.15
932 Capital Reserve Fund Transfers Applicable To Fund 32				382,540.00
Total Other Uses of Funds				\$384,148.15
Total 5200 Interfund Transfers – Out				\$384,148.15

LEA : 116605003 Mifflinburg Area SD

Printed 11/8/2016 1:26:33 PM

General Fund (10)

5230 Capital Projects Fund Transfers	<u>Elementary</u>	<u>Secondary</u>	<u>Federal</u>	<u>Total</u>
900 <u>Other Uses of Funds</u>				
932 Capital Reserve Fund Transfers Applicable To Fund 32				382,540.00
Total Other Uses of Funds				\$382,540.00
Total 5230 Capital Projects Fund Transfers				\$382,540.00

LEA : 116605003 Mifflinburg Area SD

Printed 11/8/2016 1:26:33 PM

General Fund (10)

5250 Enterprise Fund Transfers	<u>Elementary</u>	<u>Secondary</u>	<u>Federal</u>	<u>Total</u>
900 <u>Other Uses of Funds</u>				
930 Fund Transfers				1,608.15
Total Other Uses of Funds				\$1,608.15
Total 5250 Enterprise Fund Transfers				\$1,608.15

LEA : 116605003 Mifflinburg Area SD

Printed 11/8/2016 1:26:31 PM

Capital Reserve Fund - § 1431 (32)	
2000 Support Services	<u>Total</u>
400 <u>Purchased Property Services</u>	
430 Repairs and Maintenance Services	876,308.00
Total Purchased Property Services	\$876,308.00
Total 2000 Support Services	\$876,308.00

LEA : 116605003 Mifflinburg Area SD

Printed 11/8/2016 1:26:31 PM

Capital Reserve Fund - § 1431 (32)

2600 Operation and Maintenance of Plant Services

Elementary

Secondary

Federal

Total

400 Purchased Property Services

430 Repairs and Maintenance Services

876,308.00

Total Purchased Property Services				\$876,308.00
Total 2600 Operation and Maintenance of Plant Services				\$876,308.00

LEA : 116605003 Mifflinburg Area SD

Printed 11/8/2016 1:26:31 PM

Capital Reserve Fund - § 1431 (32)

2620 Operation of Buildings Services

<u>Elementary</u>	<u>Secondary</u>	<u>Federal</u>	<u>Total</u>
-------------------	------------------	----------------	--------------

400 Purchased Property Services

430 Repairs and Maintenance Services			876,308.00
--------------------------------------	--	--	------------

Total Purchased Property Services			\$876,308.00
--	--	--	---------------------

Total 2620 Operation of Buildings Services			\$876,308.00
---	--	--	---------------------

LEA : 116605003 Mifflinburg Area SD

Printed 11/8/2016 1:26:34 PM

Debt Service Fund (40)

5000 Other Expenditures and Financing Uses

Total

800 Other Objects

830 Interest	1,735.00
--------------	----------

Total Other Objects	\$1,735.00
---------------------	------------

Total 5000 Other Expenditures and Financing Uses	\$1,735.00
--	------------

LEA : 116605003 Mifflinburg Area SD

Printed 11/8/2016 1:26:34 PM

Debt Service Fund (40)

5100 Debt Service / Other Expenditures and Financing Uses	<u>Elementary</u>	<u>Secondary</u>	<u>Federal</u>	<u>Total</u>
800 <u>Other Objects</u>				
830 Interest				1,735.00
Total Other Objects				\$1,735.00
Total 5100 Debt Service / Other Expenditures and Financing Uses				\$1,735.00

LEA : 116605003 Mifflinburg Area SD

Printed 11/8/2016 1:26:34 PM

Debt Service Fund (40)

5110 Debt Service	<u>Elementary</u>	<u>Secondary</u>	<u>Federal</u>	<u>Total</u>
800 <u>Other Objects</u>				
830 Interest				1,735.00
Total Other Objects				\$1,735.00
Total 5110 Debt Service				\$1,735.00

LEA : 116605003 Mifflinburg Area SD

Printed 11/8/2016 1:26:35 PM

	<u>General Fund(10)</u>	<u>Public Purpose Trust(27)</u>	<u>Other Compt Approved (28)</u>	<u>Athletic / Activity(29)</u>	<u>Capital Reserve (690. 1850)(31)</u>
1000 <u>Instruction</u>					
1100 Regular Programs - Elementary / Secondary	12,181,049.15				
1200 Special Programs - Elementary / Secondary	3,091,152.27				
1300 Vocational Education	2,498,971.67				
1400 Other Instructional Programs - Elementary / Secondary	148,635.51				
1600 Adult Education Programs	3,915.48				
Total Instruction	\$17,923,724.08				
2000 <u>Support Services</u>					
2100 Support Services - Students	914,670.14				
2200 Support Services - Instructional Staff	1,421,061.93				
2300 Support Services - Administration	1,598,394.32				
2400 Support Services - Pupil Health	221,924.66				
2500 Support Services - Business	328,266.41				
2600 Operation and Maintenance of Plant Services	2,364,099.90				
2700 Student Transportation Services	1,561,651.87				
2800 Support Services - Central	1,152.00				
Total Support Services	\$8,411,221.23				
3000 <u>Operation of Non-Instructional Services</u>					
3200 Student Activities	538,745.61				
3300 Community Services	9,566.00				
Total Operation of Non-Instructional Services	\$548,311.61				
5000 <u>Other Expenditures and Financing Uses</u>					
5100 Debt Service / Other Expenditures and Financing Uses	1,253,590.30				
5200 Interfund Transfers - Out	384,148.15				
Total Other Expenditures and Financing Uses	\$1,637,738.45				
TOTAL ACTUAL EXPENDITURES & OTHER FINANCING USES	\$28,520,995.37				

LEA : 116605003 Mifflinburg Area SD

Printed 11/8/2016 1:26:35 PM

	<u>Capital Reserve (1431)(32)</u>	<u>Other Capital Projects Fund(39)</u>	<u>Debt Service(40)</u>	<u>Permanent(90)</u>	<u>Total</u>
1000 <u>Instruction</u>					
1100 Regular Programs - Elementary / Secondary					12,181,049.15
1200 Special Programs - Elementary / Secondary					3,091,152.27
1300 Vocational Education					2,498,971.67
1400 Other Instructional Programs - Elementary / Secondary					148,635.51
1600 Adult Education Programs					3,915.48
Total Instruction					\$17,923,724.08
2000 <u>Support Services</u>					
2100 Support Services - Students					914,670.14
2200 Support Services - Instructional Staff					1,421,061.93
2300 Support Services - Administration					1,598,394.32
2400 Support Services - Pupil Health					221,924.66
2500 Support Services - Business					328,266.41
2600 Operation and Maintenance of Plant Services	876,308.00				3,240,407.90
2700 Student Transportation Services					1,561,651.87
2800 Support Services - Central					1,152.00
Total Support Services	\$876,308.00				\$9,287,529.23
3000 <u>Operation of Non-Instructional Services</u>					
3200 Student Activities					538,745.61
3300 Community Services					9,566.00
Total Operation of Non-Instructional Services					\$548,311.61
5000 <u>Other Expenditures and Financing Uses</u>					
5100 Debt Service / Other Expenditures and Financing Uses			1,735.00		1,255,325.30
5200 Interfund Transfers - Out					384,148.15
Total Other Expenditures and Financing Uses			\$1,735.00		\$1,639,473.45
TOTAL ACTUAL EXPENDITURES & OTHER FINANCING USES	\$876,308.00		\$1,735.00		\$29,399,038.37

LEA : 116605003 Mifflinburg Area SD

Printed 11/8/2016 1:26:40 PM

PSERS Salary Data (Salary Data should relate to the General Fund only)

Amount	Description	Amount
	Total Salary Base for salaries subject to PSERS withholding	11,832,762.78
	Total Federally Funded salaries subject to PSERS withholding	391,895.20

Title I Expenditure Data

Amount	Description	Amount
	Expenditures Funded with Current Title I Funds	455,807.12
	Expenditures Funded with Carry over Title I Funds	
Total	Title I Expenditure Data	\$455,807.12

Title I ARRA Amount

Amount	Description	Amount
	Portion of Total Title I Expenditures funded with ARRA Title I	

Benefits for Staff Relative to Collective Bargaining Agreements

	OBJECT	COVERED	NOT COVERED	TOTAL
10 General Fund	No Self Insurance data to report			
	211 Medical Insurance	1,796,314.04	925,373.90	2,721,687.94
	212 Dental Insurance	83,732.82	39,403.68	123,136.50
	215 Eye Care Insurance			
	216 Prescription Insurance			
	271 Self-Insurance Medical Benefits			
	272 Self-Insurance Dental Benefits			
	275 Self-Insurance Eye Care Benefits			
	276 Self-Insurance Prescription Benefits			
	FUND TOTAL	\$1,880,046.86	\$964,777.58	\$2,844,824.44
50 Enterprise Fund	No Self Insurance data to report			
	211 Medical Insurance		33,313.33	33,313.33
	212 Dental Insurance		1,236.00	1,236.00
	215 Eye Care Insurance			
	216 Prescription Insurance			
	271 Self-Insurance Medical Benefits			
	272 Self-Insurance Dental Benefits			
	275 Self-Insurance Eye Care Benefits			
	276 Self-Insurance Prescription Benefits			
	FUND TOTAL		\$34,549.33	\$34,549.33
60 Internal Service Fund	No Self Insurance data to report			
	211 Medical Insurance			
	212 Dental Insurance			
	215 Eye Care Insurance			
	216 Prescription Insurance			
	271 Self-Insurance Medical Benefits			
	272 Self-Insurance Dental Benefits			
	275 Self-Insurance Eye Care Benefits			
	276 Self-Insurance Prescription Benefits			
	FUND TOTAL			
Total of All Funds		\$1,880,046.86	\$999,326.91	\$2,879,373.77

LEA : 116605003 Mifflinburg Area SD

Printed 11/8/2016 1:26:41 PM

Function	Special Education (Prior Year)	Nonspecial Education (Prior Year)	Total (Prior Year)	Special Education (Current Year)	Nonspecial Education (Current Year)	Total (Current Year)
2120 Guidance Services	218,274.00	327,412.00	545,686.00	224,106.01	336,159.01	560,265.02
2140 Psychological Services	48,246.00	32,164.00	80,410.00	49,727.36	33,151.58	82,878.94
2150 Speech Pathology and Audiology Services	66,726.00		66,726.00	59,478.17		59,478.17
2160 Social Work Services	133,395.00	2,722.00	136,117.00	150,496.21	3,071.35	153,567.56
2260 Instruction and Curriculum Development Services	157,182.00		157,182.00	172,422.79		172,422.79
2350 Legal and Accounting Services	4,309.00	19,631.00	23,940.00	1,874.18	12,587.10	14,461.28
2420 Medical Services						
2440 Nursing Services	43,227.00	196,924.00	240,151.00	28,761.44	193,163.22	221,924.66
2700 Student Transportation Services	314,650.00	1,433,410.00	1,748,060.00	202,390.08	1,359,261.79	1,561,651.87
Total	\$986,009.00	\$2,012,263.00	\$2,998,272.00	\$889,256.24	\$1,937,394.05	\$2,826,650.29

LEA : 116605003 Mifflinburg Area SD

Printed 11/8/2016 1:26:43 PM

(PRINCIPAL AMOUNTS ONLY)

ALL GOVERNMENTAL FUND TYPES

	Short-Term Borrowing	General Obligation Bonds/Notes	Authority Building Obligations	Other Long-Term Debt	Other Post- Employment Benefits (OPEB)	Compensated Absences	Net Pension Liability	Total
1. Debt at Beginning of Fiscal Year		25,990,000.00			128,294.00	348,737.00	35,939,000.00	62,406,031.00
2. Additional Debt Incurred During Year					353,404.00		3,002,000.00	3,355,404.00
3. Retirements and Repayments		450,000.00			294,628.00	13,317.50		757,945.50
4. Debt at End of Fiscal Year		25,540,000.00			187,070.00	335,419.50	38,941,000.00	65,003,489.50
5. Accreted Interest at End Of Fiscal Year								
6. Total Debt and Accreted Interest		25,540,000.00			187,070.00	335,419.50	38,941,000.00	65,003,489.50
7. Current Portion P&I - Due within 1 year		1,531,313.78						1,531,313.78
8. Interest Paid during current fiscal year		805,326.28						805,326.28

(PRINCIPAL AMOUNTS ONLY)

ALL PROPRIETARY FUND TYPES

1. Debt at Beginning of Fiscal Year
2. Additional Debt Incurred During Year
3. Retirements and Repayments
4. Debt at End of Fiscal Year
5. Accreted Interest at End Of Fiscal Year
6. Total Debt and Accreted Interest
7. Current Portion P&I - Due within 1 year
8. Interest Paid during current fiscal year

LEA : 116605003 Mifflinburg Area SD

Printed 11/8/2016 1:26:43 PM

Total Principal and Interest Payments Made by Your School - All Funds

Function	Fund		Principal (910)	Principal (920)	Interest (830)	Total (Principal +Interest)	Misc Other Uses (990)
5110	10	General Fund	450,000.00		803,590.30	1,253,590.30	
5110	20	Special Revenue Funds					
5110	30	Capital Projects Funds					
5110	40	Debt Service Fund			1,735.00	1,735.00	
5110	90	Permanent Fund					
5120	10	General Fund					
5120	20	Special Revenue Funds					
5120	30	Capital Projects Funds					
5120	40	Debt Service Fund					
Total Debt Payments - Governmental Funds			\$450,000.00		\$805,325.30	\$1,255,325.30	

Function	Fund		Principal (910)	Principal (920)	Interest (830)	Total (Principal +Interest)
5110	50	Enterprise Fund				
5110	60	Internal Service Fund				
5120	50	Enterprise Fund				
5120	60	Internal Service Fund				
Total Debt Payments - Proprietary Funds						

LEA : 116605003 Mifflinburg Area SD

Printed 11/8/2016 1:26:43 PM

Bond Details
Governmental Funds

Debt Category	Debt Issue Date (MM/YYYY)	Principal Amounts Only				Current Portion Due Within One Year (Principal and Interest)	Interest Paid During Fiscal Year
		Debt at Beginning of Fiscal Year	Additions	Reductions / Repayments	Debt at End of Fiscal Year		
General Obligation Bonds/Notes – CIB	03/2015	10,000,000.00		5,000.00	9,995,000.00	297,406.26	272,431.26
General Obligation Bonds/Notes – CIB	11/2014	9,995,000.00		5,000.00	9,990,000.00	417,546.26	382,576.26
General Obligation Bonds/Notes – CIB	05/2012	5,525,000.00		405,000.00	5,120,000.00	538,973.76	137,073.76
General Obligation Bonds/Notes – CIB	07/2010	470,000.00		35,000.00	435,000.00	277,387.50	13,245.00
Compensated Absences		348,737.00		13,317.50	335,419.50		
Other Post-Employment Benefits (OPEB)		128,294.00	353,404.00	294,628.00	187,070.00		
Net Pension Liability		35,939,000.00	3,002,000.00		38,941,000.00		
Totals for Debt Entered:		\$62,406,031.00	\$3,355,404.00	\$757,945.50	\$65,003,489.50	\$1,531,313.78	\$805,326.28

LEA : 116605003 Mifflinburg Area SD

Printed 11/8/2016 1:26:43 PM

General Fund (10)

Section 1: Tuition/Purchased Services as Reported within Expenditure Detail	Amount
Tuition Reported in General Fund Expenditures 1000-560	3,406,374.98
Purchased Services in General Fund Expenditures 1000-594 and 1000-597	99.01
Section 1 Total	\$3,406,473.99

Section 2: Tuition Paid to Institution Types During Fiscal Year	Tuition Paid For Nonspecial Education	Tuition Paid For Special Education	Total
1 1306 Institutions	8,675.22		8,675.22
2 Institutionalized Children's Programs			
3 Juveniles Incarcerated in Adult Facilities			
4 Residential Treatment Facilities			
5 Other Local Education Agencies		99.01	99.01
6 Brick and Mortar Charter Schools			
7 Cyber Charter Schools	641,396.06	155,369.24	796,765.30
8 Career and Technology Centers	2,314,469.84		2,314,469.84
9 Approved Private Schools	54,755.74		54,755.74
10 PA Chartered Schools for the Deaf and Blind			
11 Private Residential Rehabilitative Institutions		231,708.88	231,708.88
12 Juvenile Detention Centers			
13 Special Program Jointures			
14 Other Tuition Not Included Elsewhere In This Section			
Section 2 Total	\$3,019,296.86	\$387,177.13	\$3,406,473.99

LEA : 116605003 Mifflinburg Area SD

Printed 11/8/2016 1:26:44 PM

Food Service / Cafeteria Operations Fund (51)

3000 Operation of Non-Instructional Services	<u>Total</u>
100 <u>Personnel Services – Salaries</u>	
100 Personnel Services – Salaries	360,419.09
Total Personnel Services – Salaries	\$360,419.09
200 <u>Personnel Services – Employee Benefits</u>	
210 Group Insurance – Contracted Provider	34,612.33
220 Social Security Contributions	27,464.43
230 PSERS Retirement Contributions	97,702.39
250 Unemployment Compensation	1,559.35
260 Workers’ Compensation	1,405.46
Total Personnel Services – Employee Benefits	\$162,743.96
300 <u>Purchased Professional and Technical Services</u>	
340 Technical Services	20.00
Total Purchased Professional and Technical Services	\$20.00
400 <u>Purchased Property Services</u>	
420 Utility Services	4,195.20
430 Repairs and Maintenance Services	18,790.83
Total Purchased Property Services	\$22,986.03
500 <u>Other Purchased Services</u>	
580 Travel	808.09
Total Other Purchased Services	\$808.09
600 <u>Supplies</u>	
610 General Supplies	27,989.76
630 Food	460,044.69
650 Supplies & Fees – Technology Related	1,290.65
Total Supplies	\$489,325.10
700 <u>Property</u>	
740 Depreciation	21,377.00
Total Property	\$21,377.00
800 <u>Other Objects</u>	
810 Dues and Fees	778.69
890 Miscellaneous Expenditures	1,181.85
Total Other Objects	\$1,960.54
Total 3000 Operation of Non-Instructional Services	\$1,059,639.81

LEA : 116605003 Mifflinburg Area SD

Printed 11/8/2016 1:26:44 PM

Food Service / Cafeteria Operations Fund (51)

3100 Food Services	<u>Elementary</u>	<u>Secondary</u>	<u>Federal</u>	<u>Total</u>
100 <u>Personnel Services – Salaries</u>				
100 Personnel Services – Salaries				360,419.09
Total Personnel Services – Salaries				\$360,419.09
200 <u>Personnel Services – Employee Benefits</u>				
210 Group Insurance – Contracted Provider				34,612.33
220 Social Security Contributions				27,464.43
230 PSERS Retirement Contributions				97,702.39
250 Unemployment Compensation				1,559.35
260 Workers' Compensation				1,405.46
Total Personnel Services – Employee Benefits				\$162,743.96
300 <u>Purchased Professional and Technical Services</u>				
340 Technical Services				20.00
Total Purchased Professional and Technical Services				\$20.00
400 <u>Purchased Property Services</u>				
420 Utility Services				4,195.20
430 Repairs and Maintenance Services				18,790.83
Total Purchased Property Services				\$22,986.03
500 <u>Other Purchased Services</u>				
580 Travel				808.09
Total Other Purchased Services				\$808.09
600 <u>Supplies</u>				
610 General Supplies				27,989.76
630 Food				460,044.69
650 Supplies & Fees – Technology Related				1,290.65
Total Supplies				\$489,325.10
700 <u>Property</u>				
740 Depreciation				21,377.00
Total Property				\$21,377.00
800 <u>Other Objects</u>				
810 Dues and Fees				778.69
890 Miscellaneous Expenditures				1,181.85
Total Other Objects				\$1,960.54
Total 3100 Food Services				\$1,059,639.81

	<u>Food Service(51)</u>	<u>Child Care Operations(52)</u>	<u>Other Enterprise(58)</u>	<u>Internal Service(60)</u>	<u>Total</u>
3000 <u>Operation of Non-Instructional Services</u>					
3100 Food Services	1,059,639.81				1,059,639.81
Total Operation of Non-Instructional Services	\$1,059,639.81				\$1,059,639.81
TOTAL ACTUAL EXPENDITURES & OTHER FINANCING USES	\$1,059,639.81				\$1,059,639.81