

LEA Name : Mifflinburg Area SD
Address : 178 Maple St
Mifflinburg, PA 17844

County : Union
AUN Number : 116605003
LEA Type : SD

Annual Financial Report Accuracy Certification Statement

For Fiscal Year Ending
6/30/2020

Pennsylvania Department of Education
&
Office of Comptroller Operations
PDE-2056: Intermediate Unit
PDE-2057: School District, AVTS/CTC, Charter School,
and Special Program Jointure

CERTIFICATION: By signing this page I agree that the electronic data submitted is a complete and accurate statement of the financial operations and status of the local education agency for the fiscal year. It has been prepared in accordance with generally accepted accounting principles and established Commonwealth of PA reporting guidelines.

Chief School Administrator Signature

Date

Board Secretary Signature

Date

THOMAS R CARUSO

(570)966-8200 Ext : 8207

Contact Person

Contact Person Telephone Number

tcarusos@mifflinburg.org

570-966-8210

Contact Person E-mail Address

Contact Person Fax Number

Audit Certification

Annual Financial Report:

For Fiscal Year Ending 6/30/2020

(Pursuant to PA School Code Section 218(b))

LEA Name : Mifflinburg Area SD

AUN Number : 116605003

County : Union

Audit Certification Due:

12/31/2020

This certification is applicable to the Annual Financial Report data submitted through the Consolidated Financial Reporting System (CFRS).

CERTIFICATION: By signing this page I agree that the financial statements of the school have been properly audited as noted above pursuant to Article XXIV, and in the auditor's professional opinion, the Annual Financial Report (PDE-2057) submitted through CFRS is materially consistent with the audited financial statements.

Chief School Administrator

Signature

Date

11/20/20

Board Secretary

Signature

Anthony H. Boep

Date

11.20.20

THOMAS R CARUSO

Contact Person

(570)966-8200

Ext : 8207

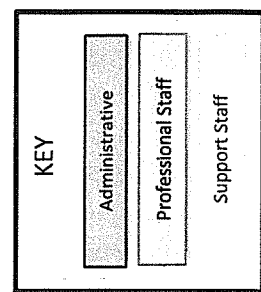
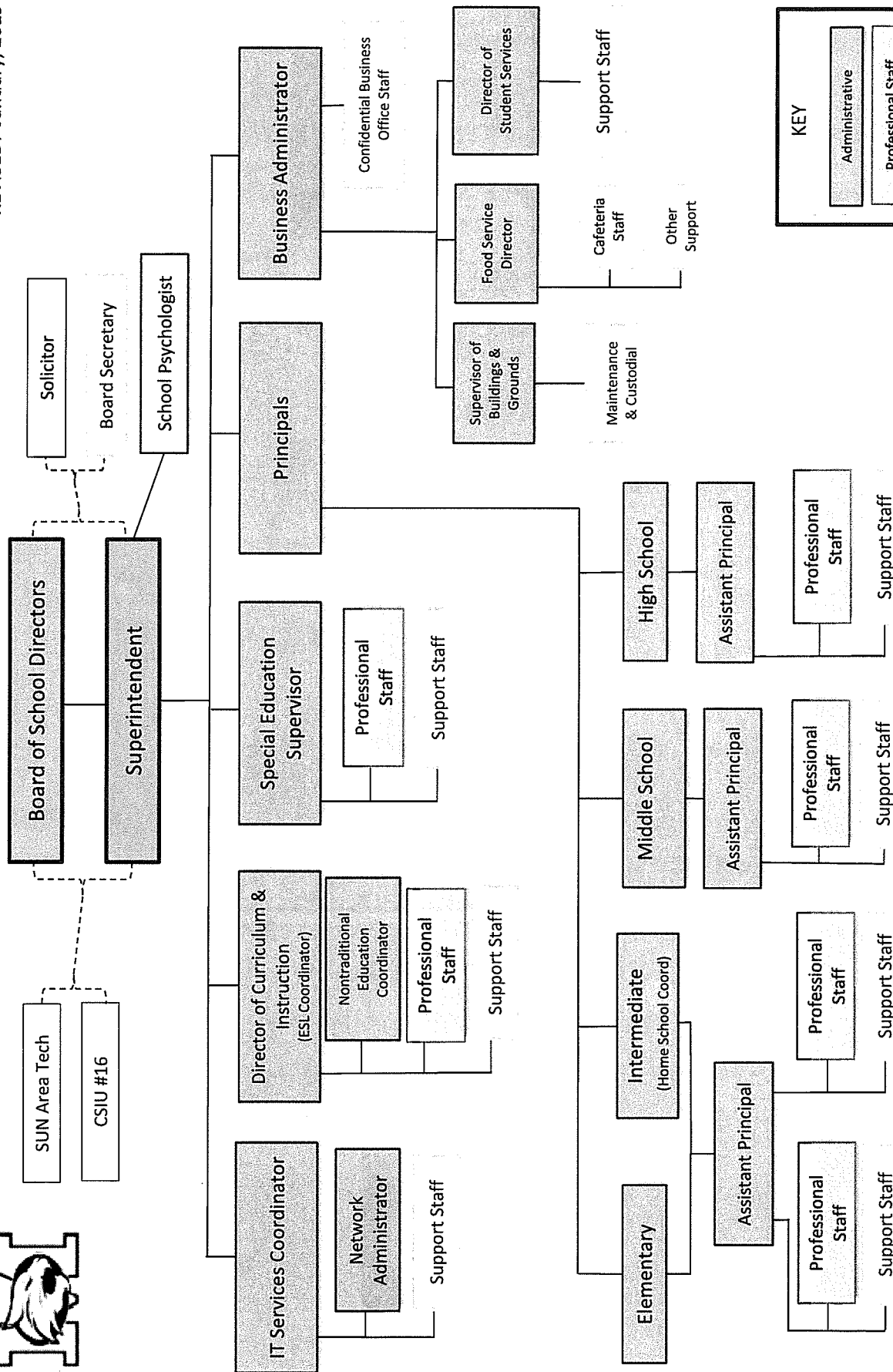
Contact Person Telephone Number

tcarusos@mifflinburg.org

Contact Person E-mail Address

570-966-8210

Contact Person Fax Number





Book	Policy Manual
Section	600 Finances
Title	GASB Statement 34
Code	622
Status	Active
Adopted	May 8, 2001

Purpose

The Board recognizes the need to implement the required accounting and financial reporting standards stipulated by the PA Department of Education.

The primary objectives of implementing the GASB Statement 34 are to assure compliance with state requirements, and properly account for both the financial and economic resources of the district.

Authority

Participation of the school district in any such activity shall be in accordance with Board policy.

Delegation of Responsibility

The responsibility to coordinate the compilation and preparation of all information necessary to implement this policy is delegated to the Business Administrator.

The Business Administrator shall be responsible for the implementing of the necessary procedures to establish and maintain a fixed asset inventory, including depreciation schedules. Depreciation shall be computed on a straight-line basis over the useful lives of the assets, using an averaging convention. Normal maintenance and repairs shall be charged to expense as incurred; major renewals and betterments that materially extend the life or increase the value of the asset shall be capitalized (according to #4 Guidelines). A schedule of accumulated depreciation shall be consistent from year to year. The basis for depreciation, including groups of assets and useful lives, shall be in writing and submitted for review to the independent auditors.

The Superintendent and Business Administrator shall prepare the required Management Discussion and Analysis (MD&A) in accordance with GASB No. 52 "Required Supplementary Information." The MD&A shall be in the form required by GASB Statement 34 and shall be submitted to the Board for approval, prior to publication.

Guidelines

In order to associate debt with acquired assets, and to avoid net asset deficit, any asset that has been acquired with debt proceeds shall be capitalized, regardless of the cost of the asset. The asset life of these assets shall be considered relative to the time of the respective debt amortizations.

For all other assets not acquired by debt proceeds, the dollar value of any single item for inclusion in the fixed assets accounts shall be not less than \$1,500 and have an estimated useful life of one year or more.

In addition to the above criteria, the item should (1) retain its original shape, appearance and character with use; (2) not lose its identity through incorporation or fabrication into a different or more complex unit or substance; and (3) be more feasible to repair rather than replace when a failure occurs.

The capitalization threshold shall be set at a level that will capture at least 80% of all fixed assets.

The assets listed below do not normally individually meet capitalization threshold criteria:

1. Library books.
2. Classroom texts.
3. Computer equipment.
4. Classroom furniture.

These asset category costs shall be capitalized and depreciated as groups when that group's acquisition cost exceeds the capitalization threshold in any given fiscal year.

For group asset depreciation purposes, the estimated useful life of the group may be based on the weighted average or simple average of the useful life of individual items, or on an assessment of the life of the group as a whole. Periodically, the district shall review the estimated life of groups of assets and adjust the remaining depreciation life of the group.

Assets that fall below the capitalization threshold for GASB 34 reporting purposes may still be significant for insurance, warranty service, and obsolescence/ replacement policy tracking purposes. The district may record and maintain these non-GASB 34 asset inventories in subsidiary ledgers.

<u>Val Number</u>	<u>Description</u>	<u>Justification</u>
50160	SOIN: All Governmental Fund General Obligation Bonds must include an amount for Interest Paid during Fiscal Year. Correct data or enter a justification.	Interest for GOB 2020 B was paid during settlement as capitalized interest.
50410	SESS - 2140 Psychological Services: SESS Schedule amounts for Special Education vary from prior year by 40% or more. Correct the data or enter a justification. SESS Schedule 2140: \$114,151.04 Prior Year SESS Schedule 2140: \$70,853.20	The district employed an additional school Psychologist in the 2019-20 school year.
60999	ICR - Since you are requesting an Indirect Cost Rate, you must upload the Capitalization Policy via the Submit Data/Documents menu link	I will upload policy

LEA : 116605003 Mifflinburg Area SD

Printed 11/22/2020 1:32:13 PM

Amounts Expressed in Whole Dollars		<u>General Fund</u> <u>(10)</u>	<u>Student Sponsored</u> <u>Activity Fund</u> <u>(21)</u>	<u>Public Purpose Trust</u> <u>(27)</u>	<u>Other Compt Approved</u> <u>(28)</u>	<u>Athletic / Activity</u> <u>(29)</u>
Assets And Deferred Outflows Of Resources						
Assets						
0100	Cash and Cash Equivalents	10,873,995				
0110	Investments					
0120	Taxes Receivable	757,248				
0130	Due From Other Funds					
0141	Due From Other Governments	1,183,336				
0142	State Revenue Receivable					
0143	Federal Revenue Receivable					
0145	Other Intergovernmental Revenue Receivable					
0146	Due from Primary Government					
0147	Due from Component Unit					
0150	Other Receivables	48,290				
0170	Inventories	40,000				
0180	Prepaid Expenses (Expenditures)					
0190	Other Current Assets					
Total Assets		\$12,902,869				
0910	Deferred Outflows of Resources					
Total Assets And Deferred Outflows Of Resources		\$12,902,869				

LEA : 116605003 Mifflinburg Area SD

Printed 11/22/2020 1:32:13 PM

Amounts Expressed in Whole Dollars		<u>Capital Reserve (690.</u> <u>1850)</u> <u>(31)</u>	<u>Capital Reserve (1431)</u> <u>(32)</u>	<u>Other Capital Projects</u> <u>Fund</u> <u>(39)</u>	<u>Debt Service</u> <u>(40)</u>	<u>Permanent</u> <u>(90)</u>
Assets And Deferred Outflows Of Resources						
Assets						
0100	Cash and Cash Equivalents		1,207,089	11,198,409		
0110	Investments					
0120	Taxes Receivable					
0130	Due From Other Funds					
0141	Due From Other Governments					
0142	State Revenue Receivable					
0143	Federal Revenue Receivable					
0145	Other Intergovernmental Revenue Receivable					
0146	Due from Primary Government					
0147	Due from Component Unit					
0150	Other Receivables					
0170	Inventories					
0180	Prepaid Expenses (Expenditures)					
0190	Other Current Assets					
Total Assets			\$1,207,089	\$11,198,409		
0910	Deferred Outflows of Resources					
Total Assets And Deferred Outflows Of Resources			\$1,207,089	\$11,198,409		

LEA : 116605003 Mifflinburg Area SD

Printed 11/22/2020 1:32:13 PM

Amounts Expressed in Whole Dollars		<u>Total Governmental</u> <u>Funds</u>
Assets And Deferred Outflows Of Resources		
Assets		
0100 Cash and Cash Equivalents	23,279,493	
0110 Investments		
0120 Taxes Receivable	757,248	
0130 Due From Other Funds		
0141 Due From Other Governments	1,183,336	
0142 State Revenue Receivable		
0143 Federal Revenue Receivable		
0145 Other Intergovernmental Revenue Receivable		
0146 Due from Primary Government		
0147 Due from Component Unit		
0150 Other Receivables	48,290	
0170 Inventories	40,000	
0180 Prepaid Expenses (Expenditures)		
0190 Other Current Assets		
Total Assets	\$25,308,367	
0910 Deferred Outflows of Resources		
Total Assets And Deferred Outflows Of Resources	\$25,308,367	

LEA : 116605003 Mifflinburg Area SD

Printed 11/22/2020 1:32:13 PM

Amounts Expressed in Whole Dollars	<u>General Fund</u> <u>(10)</u>	<u>Student Sponsored</u> <u>Activity Fund</u> <u>(21)</u>	<u>Public Purpose Trust</u> <u>(27)</u>	<u>Other Compt Approved</u> <u>(28)</u>	<u>Athletic / Activity</u> <u>(29)</u>
Liabilities And Deferred Inflows Of Resources And Fund Balances					
Liabilities					
0400 Due to Other Funds					
0411 Due to Other Governments					
0412 Due to Primary Government					
0413 Due to Component Unit					
0420 Accounts Payable	800,574				
0430 Contracts Payable					
0440 Current Portion of Long-Term Debt					
0450 Short-Term Payables					
0461 Accrued Salaries and Benefits	2,217,942				
0462 Payroll Deductions and Withholding	74,993				
0480 Unearned Revenues					
0490 Other Current Liabilities					
Total Liabilities	\$3,093,509				
0950 Deferred Inflows of Resources	578,110				
Fund Balances					
0810 Nonspendable Fund Balance	40,000				
0820 Restricted Fund Balance					
0830 Committed Fund Balance	6,550,000				
0840 Assigned Fund Balance					
0850 Unassigned Fund Balance	2,641,250				
Total Fund Balances	\$9,231,250				
Total Liabilities, Deferred Inflows Of Resources And Fund Balances	\$12,902,869				

LEA : 116605003 Mifflinburg Area SD

Printed 11/22/2020 1:32:13 PM

Amounts Expressed in Whole Dollars		<u>Capital Reserve (690.</u> <u>1850)</u> <u>(31)</u>	<u>Capital Reserve (1431)</u> <u>(32)</u>	<u>Other Capital Projects</u> <u>Fund</u> <u>(39)</u>	<u>Debt Service</u> <u>(40)</u>	<u>Permanent</u> <u>(90)</u>
Liabilities And Deferred Inflows Of Resources And Fund Balances						
Liabilities						
0400	Due to Other Funds					
0411	Due to Other Governments					
0412	Due to Primary Government					
0413	Due to Component Unit					
0420	Accounts Payable			2,471,269		
0430	Contracts Payable					
0440	Current Portion of Long-Term Debt					
0450	Short-Term Payables					
0461	Accrued Salaries and Benefits					
0462	Payroll Deductions and Withholding					
0480	Unearned Revenues					
0490	Other Current Liabilities					
Total Liabilities				\$2,471,269		
0950	Deferred Inflows of Resources					
Fund Balances						
0810	Nonspendable Fund Balance					
0820	Restricted Fund Balance		1,207,089	8,727,140		
0830	Committed Fund Balance					
0840	Assigned Fund Balance					
0850	Unassigned Fund Balance					
Total Fund Balances			\$1,207,089	\$8,727,140		
Total Liabilities, Deferred Inflows Of Resources And Fund Balances			\$1,207,089	\$11,198,409		

LEA : 116605003 Mifflinburg Area SD

Printed 11/22/2020 1:32:13 PM

Amounts Expressed in Whole Dollars		<u>Total Governmental</u> <u>Funds</u>
Liabilities And Deferred Inflows Of Resources And Fund Balances		
Liabilities		
0400 Due to Other Funds		
0411 Due to Other Governments		
0412 Due to Primary Government		
0413 Due to Component Unit		
0420 Accounts Payable	3,271,843	
0430 Contracts Payable		
0440 Current Portion of Long-Term Debt		
0450 Short-Term Payables		
0461 Accrued Salaries and Benefits	2,217,942	
0462 Payroll Deductions and Withholding	74,993	
0480 Unearned Revenues		
0490 Other Current Liabilities		
Total Liabilities	\$5,564,778	
0950 Deferred Inflows of Resources	578,110	
Fund Balances		
0810 Nonspendable Fund Balance	40,000	
0820 Restricted Fund Balance	9,934,229	
0830 Committed Fund Balance	6,550,000	
0840 Assigned Fund Balance		
0850 Unassigned Fund Balance	2,641,250	
Total Fund Balances	\$19,165,479	
Total Liabilities, Deferred Inflows Of Resources And Fund Balances	\$25,308,367	

Amounts Expressed in Whole Dollars	<u>General Fund</u> <u>(10)</u>	<u>Student Sponsored</u> <u>Activity Fund</u> <u>(21)</u>	<u>Public Purpose Trust</u> <u>(27)</u>	<u>Other Compt Approved</u> <u>(28)</u>	<u>Athletic / Activity</u> <u>(29)</u>
Revenues					
6000 Revenue from Local Sources	16,939,982				
7000 Revenue from State Sources	15,098,192				
8000 Revenue from Federal Sources	604,513				
Total Revenues	\$32,642,687				
Expenditures					
1000 Instruction	19,554,922				
2000 Support Services	10,699,841				
3000 Operation of Non-Instructional Services	502,589				
4000 Facilities Acquisition, Construction and Improvement Services					
5110 Debt Service	1,527,587				
5130 Refund of Prior Year Revenues / Receipts	15				
Total Expenditures	\$32,284,954				
Excess (Deficiency) Of Revenues Over Expenditures	\$357,733				
Other Financing Sources (Uses)					
9110 Face Value of Bonds Issued					
9120 Proceeds from Refunding of Bonds	20,365,000				
9130 Bond Premiums	2,972,927				
9200 Proceeds from Extended-Term Financing					
9300 Interfund Transfers - IN					
9400 Sale of or Compensation for Loss of Fixed Assets					
9710 Transfers from Component Units					
9720 Transfers from Primary Governments					
9910 Other Financing Sources Not Listed in the 9000 Series					
9990 Insurance Recoveries					
5120 Debt Service – Refunded Bonds	23,111,964				
5150 Bond Discounts					
5200 Interfund Transfers – Out	566,626				
5300 Transfers Out to Component Units/Primary Governments					
Total Other Financing Sources (Uses)	(\$340,663)				

Amounts Expressed in Whole Dollars	<u>Capital Reserve (690.1850)</u> <u>(31)</u>	<u>Capital Reserve (1431)</u> <u>(32)</u>	<u>Other Capital Projects</u> <u>Fund</u> <u>(39)</u>	<u>Debt Service</u> <u>(40)</u>	<u>Permanent</u> <u>(90)</u>
Revenues					
6000 Revenue from Local Sources		9,808	8,951		
7000 Revenue from State Sources					
8000 Revenue from Federal Sources					
Total Revenues		\$9,808	\$8,951		
Expenditures					
1000 Instruction					
2000 Support Services			431,840		
3000 Operation of Non-Instructional Services					
4000 Facilities Acquisition, Construction and Improvement Services		274,853	5,079,829		
5110 Debt Service					
5130 Refund of Prior Year Revenues / Receipts					
Total Expenditures		\$274,853	\$5,511,669		
Excess (Deficiency) Of Revenues Over Expenditures		(\$265,045)	(\$5,502,718)		
Other Financing Sources (Uses)					
9110 Face Value of Bonds Issued			13,710,000		
9120 Proceeds from Refunding of Bonds					
9130 Bond Premiums			519,859		
9200 Proceeds from Extended-Term Financing					
9300 Interfund Transfers - IN		500,000			
9400 Sale of or Compensation for Loss of Fixed Assets					
9710 Transfers from Component Units					
9720 Transfers from Primary Governments					
9910 Other Financing Sources Not Listed in the 9000 Series					
9990 Insurance Recoveries					
5120 Debt Service – Refunded Bonds					
5150 Bond Discounts					
5200 Interfund Transfers – Out					
5300 Transfers Out to Component Units/Primary Governments					
Total Other Financing Sources (Uses)		\$500,000	\$14,229,859		

Amounts Expressed in Whole Dollars	<u>Total Governmental Funds</u>
Revenues	
6000 Revenue from Local Sources	16,958,741
7000 Revenue from State Sources	15,098,192
8000 Revenue from Federal Sources	604,513
Total Revenues	\$32,661,446
Expenditures	
1000 Instruction	19,554,922
2000 Support Services	11,131,681
3000 Operation of Non-Instructional Services	502,589
4000 Facilities Acquisition, Construction and Improvement Services	5,354,682
5110 Debt Service	1,527,587
5130 Refund of Prior Year Revenues / Receipts	15
Total Expenditures	\$38,071,476
Excess (Deficiency) Of Revenues Over Expenditures	(\$5,410,030)
Other Financing Sources (Uses)	
9110 Face Value of Bonds Issued	13,710,000
9120 Proceeds from Refunding of Bonds	20,365,000
9130 Bond Premiums	3,492,786
9200 Proceeds from Extended-Term Financing	
9300 Interfund Transfers - IN	500,000
9400 Sale of or Compensation for Loss of Fixed Assets	
9710 Transfers from Component Units	
9720 Transfers from Primary Governments	
9910 Other Financing Sources Not Listed in the 9000 Series	
9990 Insurance Recoveries	
5120 Debt Service – Refunded Bonds	23,111,964
5150 Bond Discounts	
5200 Interfund Transfers – Out	566,626
5300 Transfers Out to Component Units/Primary Governments	
Total Other Financing Sources (Uses)	\$14,389,196

Amounts Expressed in Whole Dollars		<u>General Fund</u> <u>(10)</u>	<u>Student Sponsored</u> <u>Activity Fund</u> <u>(21)</u>	<u>Public Purpose Trust</u> <u>(27)</u>	<u>Other Compt Approved</u> <u>(28)</u>	<u>Athletic / Activity</u> <u>(29)</u>
Special And Extraordinary Items						
9920	Special Items – Gains					
9930	Extraordinary Items – Gains					
5520	Special Items – Losses					
5530	Extraordinary Items – Losses					
Net Change In Fund Balances		\$17,070				
Fund Balance						
0001	Fund Balance - Beginning of Fiscal Year	9,214,180				
Fund Balance - End Of Year		\$9,231,250				

Amounts Expressed in Whole Dollars		<u>Capital Reserve (690.</u> <u>1850)</u> <u>(31)</u>	<u>Capital Reserve (1431)</u> <u>(32)</u>	<u>Other Capital Projects</u> <u>Fund</u> <u>(39)</u>	<u>Debt Service</u> <u>(40)</u>	<u>Permanent</u> <u>(90)</u>
Special And Extraordinary Items						
9920	Special Items – Gains					
9930	Extraordinary Items – Gains					
5520	Special Items – Losses					
5530	Extraordinary Items – Losses					
Net Change In Fund Balances			\$234,955	\$8,727,141		
Fund Balance						
0001	Fund Balance - Beginning of Fiscal Year		972,134			
Fund Balance - End Of Year			\$1,207,089	\$8,727,141		

Amounts Expressed in Whole Dollars		<u>Total Governmental</u> <u>Funds</u>
Special And Extraordinary Items		
9920	Special Items – Gains	
9930	Extraordinary Items – Gains	
5520	Special Items – Losses	
5530	Extraordinary Items – Losses	
Net Change In Fund Balances		\$8,979,166
Fund Balance		
0001	Fund Balance - Beginning of Fiscal Year	10,186,314
Fund Balance - End Of Year		\$19,165,480

LEA : 116605003 Mifflinburg Area SD

Printed 11/22/2020 1:32:23 PM

Amounts Expressed in Whole Dollars	Food Service (51)	Child Care Operations (52)	Other Enterprise (58)	TOTAL	Internal Service (60)
Assets And Deferred Outflows Of Resources					
Current Assets					
0100 Cash and Cash Equivalents	18,508			18,508	
0110 Investments					
0130 Due From Other Funds					
0141 Due From Other Governments					
0142 State Revenue Receivable					
0143 Federal Revenue Receivable					
0146 Due from Primary Government					
0147 Due from Component Unit					
0150 Other Receivables					
0170 Inventories	48,093			48,093	
0180 Prepaid Expenses (Expenditures)					
0190 Other Current Assets	1,224			1,224	
Total Current Assets	\$67,825			\$67,825	
Noncurrent Assets					
0211 Land					
0212 Site Improvements (Net)					
0220 Buildings and Building Improvements (Net)					
0230 Machinery, Equipment and Furniture (Net)	48,488			48,488	
0250 Construction in Progress					
0260 Long Term Prepayments					
0290 Other Noncurrent Assets					
Total Noncurrent Assets	\$48,488			\$48,488	
0910 Deferred Outflows of Resources					
Total Assets And Deferred Outflows Of Resources	\$116,313			\$116,313	

LEA : 116605003 Mifflinburg Area SD

Printed 11/22/2020 1:32:23 PM

Amounts Expressed in Whole Dollars	<u>Food Service</u> <u>(51)</u>	<u>Child Care</u> <u>Operations</u> <u>(52)</u>	<u>Other Enterprise</u> <u>(58)</u>	<u>TOTAL</u>	<u>Internal Service</u> <u>(60)</u>
Liabilities And Deferred Inflows Of Resources And Net Position					
Current Liabilities					
0400 Due to Other Funds					
0411 Due to Other Governments					
0413 Due to Component Unit					
0420 Accounts Payable	95,655			95,655	
0430 Contracts Payable					
0440 Current Portion of Long-Term Debt					
0450 Short-Term Payables					
0461 Accrued Salaries and Benefits					
0462 Payroll Deductions and Withholding					
0480 Unearned Revenues	33,854			33,854	
0490 Other Current Liabilities					
Total Current Liabilities	\$129,509			\$129,509	
Noncurrent Liabilities					
0510 Bonds Payable					
0520 Extended-Term Financing Agreements Payable					
0530 Lease-Purchase Obligations					
0540 Accumulated Compensated Absences					
0550 Authority Lease Obligations					
0560 Other Post-Employment Benefits (OPEB)					
0570 Net Pension Liability					
0599 Other Noncurrent Liabilities					
Total Noncurrent Liabilities					
Total Liabilities	\$129,509			\$129,509	
0950 Deferred Inflows of Resources					
Net Position					
0791 Net Investment in Capital Assets	48,488			48,488	
0008 Restricted Net Position (0792 – 0798)					
0799 Unrestricted Net Position	(61,684)			(61,684)	
Total Net Position	(\$13,196)			(\$13,196)	
Total Liabilities And Deferred Inflows Of Resources And Net Position	\$116,313			\$116,313	

Amounts Expressed in Whole Dollars	Food Service (51)	Child Care Operations (52)	Other Enterprise (58)	TOTAL	Internal Service (60)
Operating Revenues					
6600 Food Service Revenue	251,371			251,371	
0071 Charges for Services					
0072 Other Operating Revenue					
Total Operating Revenues	\$251,371			\$251,371	
Operating Expenses					
100 Personnel Services – Salaries	384,598			384,598	
200 Personnel Services – Employee Benefits	174,367			174,367	
300 Purchased Professional and Technical Services					
400 Purchased Property Services	423			423	
500 Other Purchased Services	1,660			1,660	
600 Supplies	403,212			403,212	
740 Depreciation	15,736			15,736	
810 Dues and Fees					
890 Miscellaneous Expenditures	16,048			16,048	
Total Operating Expenses	\$996,044			\$996,044	
Operating Income (Loss)	(\$744,673)			(\$744,673)	
Non Operating Revenues (Expenses)					
6500 Earnings on Investments	20			20	
6920 Contributions and Donations from Private Sources					
6930 Gains or Losses on Sale of Fixed Assets					
6991 Refunds of a Prior Year Expenditure					
7000 Revenue from State Sources	109,163			109,163	
8000 Revenue from Federal Sources	443,220			443,220	
9990 Insurance Recoveries					
820 Claims and Judgments Against the LEA					
830 Interest					
TOTAL Non Operating Revenues (Expenses)	\$552,403			\$552,403	
Income (Loss) Before Contributions And Transfers	(\$192,270)			(\$192,270)	

Amounts Expressed in Whole Dollars	<u>Food Service</u> <u>(51)</u>	<u>Child Care Operations</u> <u>(52)</u>	<u>Other Enterprise</u> <u>(58)</u>	<u>TOTAL</u>	<u>Internal Service</u> <u>(60)</u>
Contributions, Transfers, and Special and Extraordinary Items					
5200 Interfund Transfers – Out					
5300 Transfers Out to Component Units/Primary Governments					
5520 Special Items – Losses					
5530 Extraordinary Items – Losses					
9300 Interfund Transfers - IN	66,626			66,626	
9500 Capital Contributions					
9700 Transfers IN From Component Units/Primary Governments					
9920 Special Items – Gains					
9930 Extraordinary Items – Gains					
Change In Net Position	(\$125,644)			(\$125,644)	
0002 Net Position - Beginning of Fiscal Year	112,448			112,448	
0003 Accounting Changes / Residual Equity Transfers					
Net Position - End Of Year	(\$13,196)			(\$13,196)	

LEA : 116605003 Mifflinburg Area SD

Printed 11/22/2020 1:32:34 PM

Amounts Expressed in Whole Dollars	Food Service (51)	Child Care Operations (52)	Other Enterprise (58)	TOTAL	Internal Service(60)
Cash Flows From Operating Activities					
0011 Cash Receipts From Users	267,574			267,574	
0012 Cash Receipts From Assessments Made to Other Funds					
0013 Cash Receipts From Earnings on Investments					
0014 Cash Receipts From Other Operating Revenue					
0015 Cash Payments To Employees For Services	525,099			525,099	
0016 Cash Payments For Insurance Claims					
0017 Cash Payments To Suppliers For Goods and Services	363,571			363,571	
0018 Cash Payments For Other Operating Expenses	16,048			16,048	
Net Cash Provided By (Used For) Operating Activities	(\$637,144)			(\$637,144)	
Cash Flows From Non-Capital Financing Activities					
0021 Receipts From Local Sources - 6000					
0022 Receipts From State Sources - 7000	109,163			109,163	
0023 Receipts From Federal Sources -8000	443,220			443,220	
0024 Notes and Loans Received (Repaid)					
0025 Interest Paid on Notes/Loans - 5100-830					
0026 Operating Transfers In (Out)/Residual Equity Trans	66,626			66,626	
0027 Operating Transfers In (Out) Primary Government / Comp Unit					
0028 Receipts From Refund of Prior Year Expenditures - 6991					
0029 Special and Extraordinary Gains (losses)					
0030 Receipts from Insurance Recoveries -9990					
Net Cash Prov By (Used for) Non-Capital Financing Activities	\$619,009			\$619,009	
Cash Flows From Capital and Related Financing Activities					
0031 Payments For Fac Acq, Const, and Imp - 4000					
0032 Gain / (Loss) on Sale of Fixed Assets - 6930					
0033 Proceeds From Extended Term Financing - 9200					
0034 Principal Paid on Financing Agreements					
0035 Interest Paid on Financing Agreements - 5100-830					
0036 (Inc) Dec in Contributed Capital					
Net Cash Prov By (Used for) Capital and Related Financing Activities					
Cash Flows From Investing Activities					
0041 Earnings on Investments - 6500	20			20	
0042 Purchase of Inv Securities / Deposits to Inv Pools					
0043 Receipts From Investment Pool Withdrawals					
0044 Proceeds from Sale and Maturity of Inv Securities					

LEA : 116605003 Mifflinburg Area SD

Printed 11/22/2020 1:32:34 PM

0045 Loans Received (Paid)

Net Cash Prov By (Used for) Investing Activities	\$20	\$20
--	------	------

LEA : 116605003 Mifflinburg Area SD

Printed 11/22/2020 1:32:34 PM

	Food Service (51)	Child Care Operations (52)	Other Enterprise (58)	TOTAL	Internal Service (60)
Net Increase (Decrease) in Cash Flows	(18,115)			(18,115)	
0004 Cash and Cash Equivalents Beginning of Year	36,623			36,623	
Cash and Cash Equivalents at Year End	\$18,508			\$18,508	
Reconciliation of Operating Income (Loss) To Net Cash Provided by (Used For) Operating Activities					
0005 Operating Income (Loss) per REP	(744,673)			(744,673)	
Adjustments					
0051 Depreciation and Net Amortization	15,736			15,736	
0052 Provision for Uncollectible Accounts					
0053 Other Adjustments					
Effect of Changes in Assets, Liabilities, Deferred Outflows and Deferred Inflows					
0054 (Inc) Dec In Accounts Receivable (0120-0150)	3,982			3,982	
0055 Advances to Other Funds (0160)					
0056 (Inc) Dec in Inventories (0170)	(19,030)			(19,030)	
0057 (Inc) Dec in Prepaid Expenses (0180)					
0058 (Inc) Dec in Other Current or Noncurrent Assets	864			864	
0064 Deferred Outflows (0910)					
0059 Inc (Dec) in Accounts Payable (0400-0450)	60,754			60,754	
0060 Inc (Dec) in Accrued Salaries/Benefits (0461)	(399)			(399)	
0065 Inc (Dec) in Net Pension Liabilities (0570)					
0066 Inc (Dec) in Other Postemp Benefit Oblig (0560)					
0061 Inc (Dec) in Payroll Deductions/Withholding (0462)					
0062 Inc (Dec) in Unearned Revenue (0480)	12,221			12,221	
0063 Inc (Dec) in Other Current or Noncurrent Liabilities					
0067 Deferred Inflows (0950)	33,401			33,401	
Total Adjustments	\$107,529			\$107,529	
Cash Provided By (Used for) Total	(\$637,144)			(\$637,144)	

COMBINED STATEMENT OF CASH FLOWS
SCHEDULE OF NONCASH INVESTING, CAPITAL, AND FINANCING ACTIVITIES

Explanation of Transaction and Balance Sheet Effect	Amount
Total	

LEA : 116605003 Mifflinburg Area SD

Printed 11/22/2020 1:32:38 PM

Amounts Expressed in Whole Dollars		<u>Private Purpose Trust</u> <u>(71)</u>	<u>Investment Trust</u> <u>(72)</u>	<u>Pension Trust</u> <u>(73)</u>	<u>Student Activity Custodial</u> <u>(81)</u>
Assets And Deferred Outflows Of Resources					
Assets					
0100	Cash and Cash Equivalents	196,273			170,469
0110	Investments	111,986			
0130	Due From Other Funds				
0140	Due from Other Governments, Primary Government and Component Units				
0150	Other Receivables				
0170	Inventories				
0180	Prepaid Expenses (Expenditures)				
0190	Other Current Assets				
0220	Buildings and Building Improvements (Net)				
0230	Machinery, Equipment and Furniture (Net)				
Total Assets		\$308,259			\$170,469
0910	Deferred Outflows of Resources				
Total Assets And Deferred Outflows Of Resources		\$308,259			\$170,469

LEA : 116605003 Mifflinburg Area SD

Printed 11/22/2020 1:32:38 PM

Amounts Expressed in Whole Dollars		<u>Other Custodial</u> <u>(89)</u>	<u>Fiduciary Component Units</u> <u>(98)</u>	<u>Total Fiduciary Funds</u>
Assets And Deferred Outflows Of Resources				
Assets				
0100	Cash and Cash Equivalents			366,742
0110	Investments			111,986
0130	Due From Other Funds			
0140	Due from Other Governments, Primary Government and Component Units			
0150	Other Receivables			
0170	Inventories			
0180	Prepaid Expenses (Expenditures)			
0190	Other Current Assets			
0220	Buildings and Building Improvements (Net)			
0230	Machinery, Equipment and Furniture (Net)			
Total Assets				\$478,728
0910	Deferred Outflows of Resources			
Total Assets And Deferred Outflows Of Resources				\$478,728

LEA : 116605003 Mifflinburg Area SD

Printed 11/22/2020 1:32:38 PM

Amounts Expressed in Whole Dollars		<u>Private Purpose Trust</u> <u>(71)</u>	<u>Investment Trust</u> <u>(72)</u>	<u>Pension Trust</u> <u>(73)</u>	<u>Student Activity Custodial</u> <u>(81)</u>
Liabilities, Deferred Inflows Of Resources And Net Position					
Liabilities					
0400	Due to Other Funds				
0410	Due to Other Governments, Primary Government and Component Units				
0420	Accounts Payable				
0430	Contracts Payable				
0450	Short-Term Payables				
0460	Payroll Accruals and Withholdings				
0480	Unearned Revenues				
0490	Other Current Liabilities				170,469
Total Liabilities					\$170,469
0950	Deferred Inflows of Resources				
Net Position					
0791	Net Investment in Capital Assets				
0009	Restricted Net Position (0792 – 0798)	308,259			
0799	Unrestricted Net Position				
Total Net Position		\$308,259			
Total Liabilities, Deferred Inflows Of Resources And Net Position		\$308,259			\$170,469

LEA : 116605003 Mifflinburg Area SD

Printed 11/22/2020 1:32:38 PM

Amounts Expressed in Whole Dollars		<u>Other Custodial</u> <u>(89)</u>	<u>Fiduciary Component Units</u> <u>(98)</u>	<u>Total Fiduciary Funds</u>
Liabilities, Deferred Inflows Of Resources And Net Position				
Liabilities				
0400	Due to Other Funds			
0410	Due to Other Governments, Primary Government and Component Units			
0420	Accounts Payable			
0430	Contracts Payable			
0450	Short-Term Payables			
0460	Payroll Accruals and Withholdings			
0480	Unearned Revenues			
0490	Other Current Liabilities			170,469
Total Liabilities				\$170,469
0950	Deferred Inflows of Resources			
Net Position				
0791	Net Investment in Capital Assets			
0009	Restricted Net Position (0792 – 0798)			308,259
0799	Unrestricted Net Position			
Total Net Position				\$308,259
Total Liabilities, Deferred Inflows Of Resources And Net Position				\$478,728

LEA : 116605003 Mifflinburg Area SD

Printed 11/22/2020 1:32:40 PM

Amounts Expressed in Whole Dollars		<u>Private Purpose Trust</u> <u>(71)</u>	<u>Investment Trust</u> <u>(72)</u>	<u>Pension Trust</u> <u>(73)</u>	<u>Student Activity</u> <u>Custodial</u> <u>(81)</u>	<u>Other Custodial</u> <u>(89)</u>	<u>Fiduciary Component</u> <u>Units</u> <u>(98)</u>
Additions							
0091	Gifts and Contributions	26,109					
0095	Net Investment Earnings	8,403					
0092	Other Additions						
Deductions							
0093	Scholarships Awarded	27,724					
0094	Other Deductions	4,700					
Change In Net Position		\$2,088					
0006	Net Position – Beginning of Fiscal Year	306,171					
0007	Net Position Held in Trust for Pension Benefits						
Net Position - End of Fiscal Year		\$308,259					

LEA : 116605003 Mifflinburg Area SD

Printed 11/22/2020 1:32:40 PM

Amounts Expressed in Whole Dollars		<u>Total Fiduciary</u>
		<u>Funds</u>
Additions		
0091	Gifts and Contributions	26,109
0095	Net Investment Earnings	8,403
0092	Other Additions	
Deductions		
0093	Scholarships Awarded	27,724
0094	Other Deductions	4,700
Change In Net Position		\$2,088
0006	Net Position – Beginning of Fiscal Year	306,171
0007	Net Position Held in Trust for Pension Benefits	
Net Position - End of Fiscal Year		\$308,259

	Revenue Reported In Current Year	Current Year Tax Accrual	Prior Year Tax Accrual	Taxes Collected In Current Year
Revenue from Local Sources				
6111 Current Real Estate Taxes	10,664,817.61			10,664,817.61
6113 Public Utility Realty Taxes	14,097.88			14,097.88
6114 Payments in Lieu of Current Taxes - State / Local	114,651.51			114,651.51
6120 Current Per Capita Taxes, Section 679	33,897.11			33,897.11
6141 Current Act 511 Per Capita Taxes	63,814.59			63,814.59
6151 Current Act 511 Earned Income Taxes	4,627,464.77			4,627,464.77
6153 Current Act 511 Real Estate Transfer Taxes	221,238.83			221,238.83
6411 Delinquent Real Estate Taxes	372,438.48			372,438.48
6420 Delinquent Per Capita Taxes, Section 679	12,287.71			12,287.71
6440 Delinquent Local Enabling Taxes - Flat Rate Assessments	10,144.19			10,144.19
6500 Earnings on Investments	190,383.36			
6700 Revenues from LEA Activities	75,997.77			
6831 Federal Revenue Received from Other Pennsylvania Public LEAs	7,459.88			
6832 Federal IDEA Revenue Received as Pass Through	332,253.22			
6910 Rentals	32,761.92			
6920 Contributions and Donations from Private Sources	15,932.46			
6941 Regular Day School Tuition	41,778.62			
6942 Summer School Tuition	(630.00)			
6991 Refunds of a Prior Year Expenditure	28,790.15			
6992 Energy Efficiency Revenues and Incentives	23,255.15			
6999 Other Revenues Not Specified Above	57,147.00			
TOTAL Revenue from Local Sources	\$16,939,982.21			\$16,134,852.68

	Revenue Reported In Current Year			
<u>Revenue from State Sources</u>				
7111 Basic Education Funding-Formula	8,092,110.98			
7112 Basic Education Funding-Social Security	503,170.62			
7160 Tuition for Orphans Subsidy	39,214.72			
7220 Vocational Education	102,148.40			
7271 Special Education funds for School-Aged Pupils	1,418,802.35			
7311 Pupil Transportation Subsidy	1,063,384.05			
7312 Nonpublic and Charter School Pupil Transportation Subsidy	25,025.00			
7320 Rental and Sinking Fund Payments / Building Reimbursement Subsidy	324,640.36			
7330 Health Services (Medical, Dental, Nurse, Act 25)	38,918.33			
7340 State Property Tax Reduction Allocation	570,344.90			
7361 School Safety and Security Grants	253,608.00			
7505 Ready to Learn Block Grant	354,755.00			
7506 PAsmart Grants	9,722.20			
7810 State Share of Social Security and Medicare Taxes	(16,649.64)			
7820 State Share of Retirement Contributions	2,318,997.07			
TOTAL Revenue from State Sources	\$15,098,192.34			

	Revenue Reported <u>In Current Year</u>			
<u>Revenue from Federal Sources</u>				
8514 NCLB, Title I - Improving the Academic Achievement of the Disadvantaged	476,610.00			
8515 NCLB, Title II - Preparing, Training and Recruiting High Quality Teachers and Principals	90,643.00			
8517 NCLB, Title IV - 21St Century Schools	35,104.00			
8820 Medical Assistance Reimbursement for Administrative Claiming (Quarterly) Program	2,156.12			
TOTAL Revenue from Federal Sources	\$604,513.12			

					Revenue Reported <u>In Current Year</u>			
<u>Other Financing Sources</u>								
9120	Proceeds from Refunding of Bonds				20,365,000.00			
9130	Bond Premiums				2,972,927.00			
TOTAL Other Financing Sources					\$23,337,927.00			
TOTAL FROM ALL SOURCES					\$55,980,614.67			\$16,134,852.68

LEA : 116605003 Mifflinburg Area SD

Printed 11/22/2020 1:32:47 PM

	<u>General Fund (10)</u>	<u>Student Sponsored Activity Fund (21)</u>	<u>Public Purpose Trust (27)</u>	<u>Other Compt Approved (28)</u>	<u>Athletic / Activity (29)</u>	<u>Capital Reserve (690, 1850) (31)</u>
6000 Revenue from Local Sources						
6111 Current Real Estate Taxes	10,664,817.61					
6113 Public Utility Realty Taxes	14,097.88					
6114 Payments in Lieu of Current Taxes - State / Local	114,651.51					
6120 Current Per Capita Taxes, Section 679	33,897.11					
6141 Current Act 511 Per Capita Taxes	63,814.59					
6151 Current Act 511 Earned Income Taxes	4,627,464.77					
6153 Current Act 511 Real Estate Transfer Taxes	221,238.83					
6411 Delinquent Real Estate Taxes	372,438.48					
6420 Delinquent Per Capita Taxes, Section 679	12,287.71					
6440 Delinquent Local Enabling Taxes - Flat Rate Assessments	10,144.19					
6500 Earnings on Investments	190,383.36					
6700 Revenues from LEA Activities	75,997.77					
6831 Federal Revenue Received from Other Pennsylvania Public LEAs	7,459.88					
6832 Federal IDEA Revenue Received as Pass Through	332,253.22					
6910 Rentals	32,761.92					
6920 Contributions and Donations from Private Sources	15,932.46					
6941 Regular Day School Tuition	41,778.62					
6942 Summer School Tuition	(630.00)					
6991 Refunds of a Prior Year Expenditure	28,790.15					
6992 Energy Efficiency Revenues and Incentives	23,255.15					
6999 Other Revenues Not Specified Above	57,147.00					
6000 Total Revenue from Local Sources	\$16,939,982.21					
7000 Revenue from State Sources						
7111 Basic Education Funding-Formula	8,092,110.98					
7112 Basic Education Funding-Social Security	503,170.62					
7160 Tuition for Orphans Subsidy	39,214.72					
7220 Vocational Education	102,148.40					
7271 Special Education funds for School-Aged Pupils	1,418,802.35					
7311 Pupil Transportation Subsidy	1,063,384.05					
7312 Nonpublic and Charter School Pupil Transportation Subsidy	25,025.00					
7320 Rental and Sinking Fund Payments / Building Reimbursement Subsidy	324,640.36					
7330 Health Services (Medical, Dental, Nurse, Act 25)	38,918.33					
7340 State Property Tax Reduction Allocation	570,344.90					
7361 School Safety and Security Grants	253,608.00					
7505 Ready to Learn Block Grant	354,755.00					

LEA : 116605003 Mifflinburg Area SD

Printed 11/22/2020 1:32:47 PM

	Capital Reserve (1431) (32)	Other Capital Projects Fund (39)	Debt Service (40)	Permanent (90)	Total
6000 Revenue from Local Sources					
6111 Current Real Estate Taxes					10,664,817.61
6113 Public Utility Realty Taxes					14,097.88
6114 Payments in Lieu of Current Taxes - State / Local					114,651.51
6120 Current Per Capita Taxes, Section 679					33,897.11
6141 Current Act 511 Per Capita Taxes					63,814.59
6151 Current Act 511 Earned Income Taxes					4,627,464.77
6153 Current Act 511 Real Estate Transfer Taxes					221,238.83
6411 Delinquent Real Estate Taxes					372,438.48
6420 Delinquent Per Capita Taxes, Section 679					12,287.71
6440 Delinquent Local Enabling Taxes - Flat Rate Assessments					10,144.19
6500 Earnings on Investments	9,807.57	8,950.89			209,141.82
6700 Revenues from LEA Activities					75,997.77
6831 Federal Revenue Received from Other Pennsylvania Public LEAs					7,459.88
6832 Federal IDEA Revenue Received as Pass Through					332,253.22
6910 Rentals					32,761.92
6920 Contributions and Donations from Private Sources					15,932.46
6941 Regular Day School Tuition					41,778.62
6942 Summer School Tuition					(630.00)
6991 Refunds of a Prior Year Expenditure					28,790.15
6992 Energy Efficiency Revenues and Incentives					23,255.15
6999 Other Revenues Not Specified Above					57,147.00
6000 Total Revenue from Local Sources	\$9,807.57	\$8,950.89			\$16,958,740.67
7000 Revenue from State Sources					
7111 Basic Education Funding-Formula					8,092,110.98
7112 Basic Education Funding-Social Security					503,170.62
7160 Tuition for Orphans Subsidy					39,214.72
7220 Vocational Education					102,148.40
7271 Special Education funds for School-Aged Pupils					1,418,802.35
7311 Pupil Transportation Subsidy					1,063,384.05
7312 Nonpublic and Charter School Pupil Transportation Subsidy					25,025.00
7320 Rental and Sinking Fund Payments / Building Reimbursement Subsidy					324,640.36
7330 Health Services (Medical, Dental, Nurse, Act 25)					38,918.33
7340 State Property Tax Reduction Allocation					570,344.90
7361 School Safety and Security Grants					253,608.00
7505 Ready to Learn Block Grant					354,755.00

LEA : 116605003 Mifflinburg Area SD

Printed 11/22/2020 1:32:47 PM

	<u>General Fund (10)</u>	<u>Student Sponsored Activity Fund (21)</u>	<u>Public Purpose Trust (27)</u>	<u>Other Compt Approved (28)</u>	<u>Athletic / Activity (29)</u>	<u>Capital Reserve (690, 1850) (31)</u>
7000 Revenue from State Sources						
7506 PAsmart Grants	9,722.20					
7810 State Share of Social Security and Medicare Taxes	(16,649.64)					
7820 State Share of Retirement Contributions	2,318,997.07					
7000 Total Revenue from State Sources	\$15,098,192.34					
8000 Revenue from Federal Sources						
8514 NCLB, Title I - Improving the Academic Achievement of the Disadvantaged	476,610.00					
8515 NCLB, Title II - Preparing, Training and Recruiting High Quality Teachers and Principals	90,643.00					
8517 NCLB, Title IV - 21st Century Schools	35,104.00					
8820 Medical Assistance Reimbursement for Administrative Claiming (Quarterly) Program	2,156.12					
8000 Total Revenue from Federal Sources	\$604,513.12					
9000 Other Financing Sources						
9110 Face Value of Bonds Issued						
9120 Proceeds from Refunding of Bonds	20,365,000.00					
9130 Bond Premiums	2,972,927.00					
9310 General Fund Transfers						
9000 Total Other Financing Sources	\$23,337,927.00					
Total From All Sources	\$55,980,614.67					

LEA : 116605003 Mifflinburg Area SD

Printed 11/22/2020 1:32:47 PM

	Capital Reserve (1431) (32)	Other Capital Projects Fund (39)	Debt Service (40)	Permanent (90)	Total
7000 Revenue from State Sources					
7506 PAsmart Grants					9,722.20
7810 State Share of Social Security and Medicare Taxes					(16,649.64)
7820 State Share of Retirement Contributions					2,318,997.07
7000 Total Revenue from State Sources					\$15,098,192.34
8000 Revenue from Federal Sources					
8514 NCLB, Title I - Improving the Academic Achievement of the Disadvantaged					476,610.00
8515 NCLB, Title II - Preparing, Training and Recruiting High Quality Teachers and Principals					90,643.00
8517 NCLB, Title IV - 21st Century Schools					35,104.00
8820 Medical Assistance Reimbursement for Administrative Claiming (Quarterly) Program					2,156.12
8000 Total Revenue from Federal Sources					\$604,513.12
9000 Other Financing Sources					
9110 Face Value of Bonds Issued		13,710,000.00			13,710,000.00
9120 Proceeds from Refunding of Bonds					20,365,000.00
9130 Bond Premiums		519,859.00			3,492,786.00
9310 General Fund Transfers	500,000.00				500,000.00
9000 Total Other Financing Sources	\$500,000.00	\$14,229,859.00			\$38,067,786.00
Total From All Sources	\$509,807.57	\$14,238,809.89			\$70,729,232.13

LEA : 116605003 Mifflinburg Area SD

Printed 11/22/2020 1:32:52 PM

	<u>General Fund (10)</u>	<u>Student Sponsored Activity Fund (21)</u>	<u>Public Purpose Trust (27)</u>	<u>Other Compt Approved (28)</u>	<u>Athletic / Activity (29)</u>	<u>Capital Reserve (690.1850) (31)</u>
Revenue from Local Sources	16,939,982.21					
Revenue from State Sources	15,098,192.34					
Revenue from Federal Sources	604,513.12					
Other Financing Sources	23,337,927.00					
Total From All Sources	\$55,980,614.67					

LEA : 116605003 Mifflinburg Area SD

Printed 11/22/2020 1:32:52 PM

	<u>Capital Reserve (1431)</u> <u>(32)</u>	<u>Other Capital Projects</u> <u>Fund (39)</u>	<u>Debt Service (40)</u>	<u>Permanent (90)</u>	<u>Total</u>
Revenue from Local Sources	9,807.57	8,950.89			16,958,740.67
Revenue from State Sources					15,098,192.34
Revenue from Federal Sources					604,513.12
Other Financing Sources	500,000.00	14,229,859.00			38,067,786.00
Total From All Sources	\$509,807.57	\$14,238,809.89			\$70,729,232.13

LEA : 116605003 Mifflinburg Area SD

Printed 11/22/2020 1:32:56 PM

General Fund (10)

1000 Instruction		Total
100 <u>Personnel Services – Salaries</u>		
100 Personnel Services – Salaries		9,115,241.27
Total Personnel Services – Salaries		\$9,115,241.27
200 <u>Personnel Services – Employee Benefits</u>		
210 Group Insurance – Contracted Provider		2,527,795.54
220 Social Security Contributions		687,461.75
230 PSERS Retirement Contributions		3,061,160.11
250 Unemployment Compensation		21,561.45
260 Workers' Compensation		33,019.57
280 Other Post-Employment Benefits (OPEB)		48,999.99
291 Other Retirement Plans		815.00
299 All Other Employee Benefits		100.00
Total Personnel Services – Employee Benefits		\$6,380,913.41
300 <u>Purchased Professional and Technical Services</u>		
322 Professional Educational Services – Ius		586,736.16
329 Professional Educational Services – Other		116,600.35
330 Other Professional Services		7,582.00
390 Other Purchased Professional and Technical Services		4,933.19
Total Purchased Professional and Technical Services		\$715,851.70
400 <u>Purchased Property Services</u>		
430 Repairs and Maintenance Services		5,987.04
Total Purchased Property Services		\$5,987.04
500 <u>Other Purchased Services</u>		
510 Student Transportation Services		72,630.62
561 Tuition To Other School Districts Within the State		156,384.41
562 Tuition To Pennsylvania Charter Schools		455,248.78
564 Tuition To Career and Technology Centers		1,527,956.94
567 Tuition To Approved Private Schools (APS) and PA Chartered Schools for the Deaf and Blind		368,480.67
568 Tuition To Private Residential Rehabilitative Institutions (PRRI) [In-State] and Detention Centers		215,581.34
580 Travel		1,910.01
594 IU Payment By Withholding for Institutionalized Children's Programs – Special Classes		3,653.72
Total Other Purchased Services		\$2,801,846.49
600 <u>Supplies</u>		
610 General Supplies		336,448.91
630 Food		3,262.50
640 Books and Periodicals		43,478.10
650 Supplies & Fees – Technology Related		147,770.57
Total Supplies		\$530,960.08
800 <u>Other Objects</u>		
810 Dues and Fees		1,734.00
890 Miscellaneous Expenditures		2,388.27

LEA : 116605003 Mifflinburg Area SD

Printed 11/22/2020 1:32:56 PM

General Fund (10)

1000 Instruction

		<u>Total</u>
Total Other Objects		\$4,122.27
Total 1000 Instruction		\$19,554,922.26

LEA : 116605003 Mifflinburg Area SD

Printed 11/22/2020 1:32:56 PM

General Fund (10)				
1100 Regular Programs – Elementary / Secondary	<u>Elementary</u>	<u>Secondary</u>	<u>Federal</u>	<u>Total</u>
100 <u>Personnel Services – Salaries</u>				
100 Personnel Services – Salaries	3,053,384.31	3,748,266.17	401,356.93	7,203,007.41
Total Personnel Services – Salaries	\$3,053,384.31	\$3,748,266.17	\$401,356.93	\$7,203,007.41
200 <u>Personnel Services – Employee Benefits</u>				
210 Group Insurance – Contracted Provider	873,333.31	1,075,598.83	194,066.40	2,142,998.54
220 Social Security Contributions	231,065.46	281,997.45	30,254.07	543,316.98
230 PSERS Retirement Contributions	1,024,326.17	1,261,607.53	136,520.44	2,422,454.14
250 Unemployment Compensation	6,944.03	8,119.40	884.59	15,948.02
260 Workers' Compensation	11,201.68	13,466.52	1,418.62	26,086.82
280 Other Post-Employment Benefits (OPEB)	245.00	48,754.99		48,999.99
291 Other Retirement Plans			815.00	815.00
299 All Other Employee Benefits	0.50	99.50		100.00
Total Personnel Services – Employee Benefits	\$2,147,116.15	\$2,689,644.22	\$363,959.12	\$5,200,719.49
300 <u>Purchased Professional and Technical Services</u>				
322 Professional Educational Services – Ius		193,043.00		193,043.00
329 Professional Educational Services – Other	1,353.03	1,348.32		2,701.35
330 Other Professional Services	295.00			295.00
390 Other Purchased Professional and Technical Services	4,893.59			4,893.59
Total Purchased Professional and Technical Services	\$6,541.62	\$194,391.32		\$200,932.94
400 <u>Purchased Property Services</u>				
430 Repairs and Maintenance Services	2,482.74	3,504.30		5,987.04
Total Purchased Property Services	\$2,482.74	\$3,504.30		\$5,987.04
500 <u>Other Purchased Services</u>				
510 Student Transportation Services	757.98	5,313.36		6,071.34
561 Tuition To Other School Districts Within the State	68.98	42,928.78		42,997.76
562 Tuition To Pennsylvania Charter Schools	134,010.14	229,956.75		363,966.89
568 Tuition To Private Residential Rehabilitative Institutions (PRRI) [In-State] and Detention Centers	1.16	768.84		770.00
580 Travel	116.58	616.18		732.76
Total Other Purchased Services	\$134,954.84	\$279,583.91		\$414,538.75
600 <u>Supplies</u>				
610 General Supplies	103,235.14	176,788.75	3,944.89	283,968.78
630 Food	2,127.41	1,135.09		3,262.50
640 Books and Periodicals	115.65	43,362.45		43,478.10
650 Supplies & Fees – Technology Related	58,040.89	79,470.59		137,511.48
Total Supplies	\$163,519.09	\$300,756.88	\$3,944.89	\$468,220.86
800 <u>Other Objects</u>				
810 Dues and Fees	75.00			75.00
890 Miscellaneous Expenditures	(0.75)	(338.25)		(339.00)
Total Other Objects	\$74.25	(\$338.25)		(\$264.00)
Total 1100 Regular Programs – Elementary / Secondary	\$5,508,073.00	\$7,215,808.55	\$769,260.94	\$13,493,142.49

LEA : 116605003 Mifflinburg Area SD

Printed 11/22/2020 1:32:56 PM

General Fund (10)

1110 Regular Programs

	Elementary	Secondary	Federal	Total
100 Personnel Services – Salaries				
100 Personnel Services – Salaries	3,053,384.31	3,748,266.17	125,647.85	6,927,298.33
Total Personnel Services – Salaries	\$3,053,384.31	\$3,748,266.17	\$125,647.85	\$6,927,298.33
200 Personnel Services – Employee Benefits				
210 Group Insurance – Contracted Provider	873,333.31	1,075,598.83	87,550.80	2,036,482.94
220 Social Security Contributions	231,065.46	281,997.45	9,569.22	522,632.13
230 PSERS Retirement Contributions	1,024,326.17	1,261,607.53	41,979.79	2,327,913.49
250 Unemployment Compensation	6,944.03	8,119.40	518.64	15,582.07
260 Workers' Compensation	11,201.68	13,466.52	405.96	25,074.16
280 Other Post-Employment Benefits (OPEB)	245.00	48,754.99		48,999.99
291 Other Retirement Plans			815.00	815.00
299 All Other Employee Benefits	0.50	99.50		100.00
Total Personnel Services – Employee Benefits	\$2,147,116.15	\$2,689,644.22	\$140,839.41	\$4,977,599.78
300 Purchased Professional and Technical Services				
322 Professional Educational Services – Ius		193,043.00		193,043.00
329 Professional Educational Services – Other	1,353.03	1,348.32		2,701.35
330 Other Professional Services	295.00			295.00
390 Other Purchased Professional and Technical Services	4,893.59			4,893.59
Total Purchased Professional and Technical Services	\$6,541.62	\$194,391.32		\$200,932.94
400 Purchased Property Services				
430 Repairs and Maintenance Services	2,482.74	3,504.30		5,987.04
Total Purchased Property Services	\$2,482.74	\$3,504.30		\$5,987.04
500 Other Purchased Services				
510 Student Transportation Services	757.98	5,313.36		6,071.34
561 Tuition To Other School Districts Within the State	68.98	42,928.78		42,997.76
562 Tuition To Pennsylvania Charter Schools	134,010.14	229,956.75		363,966.89
568 Tuition To Private Residential Rehabilitative Institutions (PRRI) [In-State] and Detention Centers	1.16	768.84		770.00
580 Travel	116.58	616.18		732.76
Total Other Purchased Services	\$134,954.84	\$279,583.91		\$414,538.75
600 Supplies				
610 General Supplies	103,235.14	176,788.75		280,023.89
630 Food	2,127.41	1,135.09		3,262.50
640 Books and Periodicals	115.65	43,362.45		43,478.10
650 Supplies & Fees – Technology Related	58,040.89	79,470.59		137,511.48
Total Supplies	\$163,519.09	\$300,756.88		\$464,275.97
800 Other Objects				
810 Dues and Fees	75.00			75.00
890 Miscellaneous Expenditures	(0.75)	(338.25)		(339.00)
Total Other Objects	\$74.25	(\$338.25)		(\$264.00)
Total 1110 Regular Programs	\$5,508,073.00	\$7,215,808.55	\$266,487.26	\$12,990,368.81

LEA : 116605003 Mifflinburg Area SD

Printed 11/22/2020 1:32:56 PM

General Fund (10)

1190 Federally-Funded Regular Programs

	<u>Elementary</u>	<u>Secondary</u>	<u>Federal</u>	<u>Total</u>
100 <u>Personnel Services – Salaries</u>				
100 Personnel Services – Salaries			275,709.08	275,709.08
Total Personnel Services – Salaries			\$275,709.08	\$275,709.08
200 <u>Personnel Services – Employee Benefits</u>				
210 Group Insurance – Contracted Provider			106,515.60	106,515.60
220 Social Security Contributions			20,684.85	20,684.85
230 PSERS Retirement Contributions			94,540.65	94,540.65
250 Unemployment Compensation			365.95	365.95
260 Workers' Compensation			1,012.66	1,012.66
Total Personnel Services – Employee Benefits			\$223,119.71	\$223,119.71
600 <u>Supplies</u>				
610 General Supplies			3,944.89	3,944.89
Total Supplies			\$3,944.89	\$3,944.89
Total 1190 Federally-Funded Regular Programs			\$502,773.68	\$502,773.68

LEA : 116605003 Mifflinburg Area SD

Printed 11/22/2020 1:32:56 PM

General Fund (10)				
1200 Special Programs – Elementary / Secondary	<u>Elementary</u>	<u>Secondary</u>	<u>Federal</u>	<u>Total</u>
100 <u>Personnel Services – Salaries</u>				
100 Personnel Services – Salaries	828,118.09	779,370.22	177,304.96	1,784,793.27
Total Personnel Services – Salaries	\$828,118.09	\$779,370.22	\$177,304.96	\$1,784,793.27
200 <u>Personnel Services – Employee Benefits</u>				
210 Group Insurance – Contracted Provider	137,371.90	188,565.10	22,644.00	348,581.00
220 Social Security Contributions	62,619.36	58,557.56	13,451.70	134,628.62
230 PSERS Retirement Contributions	280,505.61	266,320.43	49,267.58	596,093.62
250 Unemployment Compensation	2,351.29	2,000.35	994.25	5,345.89
260 Workers' Compensation	3,097.13	2,895.03	477.58	6,469.74
Total Personnel Services – Employee Benefits	\$485,945.29	\$518,338.47	\$86,835.11	\$1,091,118.87
300 <u>Purchased Professional and Technical Services</u>				
322 Professional Educational Services – lus	1,884.27	391,808.89		393,693.16
329 Professional Educational Services – Other	13,770.96	100,128.04		113,899.00
330 Other Professional Services	36.44	7,250.56		7,287.00
390 Other Purchased Professional and Technical Services	39.60			39.60
Total Purchased Professional and Technical Services	\$15,731.27	\$499,187.49		\$514,918.76
500 <u>Other Purchased Services</u>				
510 Student Transportation Services	332.80	66,226.48		66,559.28
561 Tuition To Other School Districts Within the State	404.80	112,981.85		113,386.65
562 Tuition To Pennsylvania Charter Schools	44,123.89	47,158.00		91,281.89
567 Tuition To Approved Private Schools (APS) and PA Chartered Schools for the Deaf and Blind	160,012.01	147,421.66		307,433.67
568 Tuition To Private Residential Rehabilitative Institutions (PRRI) [In-State] and Detention Centers	41,152.96	125,140.26		166,293.22
580 Travel	5.89	1,171.36		1,177.25
594 IU Payment By Withholding for Institutionalized Children's Programs – Special Classes	489.44	3,164.28		3,653.72
Total Other Purchased Services	\$246,521.79	\$503,263.89		\$749,785.68
600 <u>Supplies</u>				
610 General Supplies	20,928.51	21,914.89		42,843.40
650 Supplies & Fees – Technology Related	6,057.36	4,201.73		10,259.09
Total Supplies	\$26,985.87	\$26,116.62		\$53,102.49
800 <u>Other Objects</u>				
810 Dues and Fees	1,135.84	523.16		1,659.00
890 Miscellaneous Expenditures	13.64	2,713.63		2,727.27
Total Other Objects	\$1,149.48	\$3,236.79		\$4,386.27
Total 1200 Special Programs – Elementary / Secondary	\$1,604,451.79	\$2,329,513.48	\$264,140.07	\$4,198,105.34

LEA : 116605003 Mifflinburg Area SD

Printed 11/22/2020 1:32:56 PM

General Fund (10)

1210 Life Skills Support	Elementary	Secondary	Federal	Total
100 <u>Personnel Services – Salaries</u>				
100 Personnel Services – Salaries	155,001.35	110,916.41	43,449.84	309,367.60
Total Personnel Services – Salaries	\$155,001.35	\$110,916.41	\$43,449.84	\$309,367.60
200 <u>Personnel Services – Employee Benefits</u>				
210 Group Insurance – Contracted Provider	25,764.00	9,816.00		35,580.00
220 Social Security Contributions	11,780.29	8,402.84	3,300.13	23,483.26
230 PSERS Retirement Contributions	53,149.92	38,033.25	12,872.82	104,055.99
250 Unemployment Compensation	462.82	327.58	300.09	1,090.49
260 Workers' Compensation	584.12	412.97	98.80	1,095.89
Total Personnel Services – Employee Benefits	\$91,741.15	\$56,992.64	\$16,571.84	\$165,305.63
300 <u>Purchased Professional and Technical Services</u>				
322 Professional Educational Services – lus	868.21	172,773.34		173,641.55
390 Other Purchased Professional and Technical Services	39.60			39.60
Total Purchased Professional and Technical Services	\$907.81	\$172,773.34		\$173,681.15
500 <u>Other Purchased Services</u>				
510 Student Transportation Services	37.19	7,400.09		7,437.28
Total Other Purchased Services	\$37.19	\$7,400.09		\$7,437.28
600 <u>Supplies</u>				
610 General Supplies	2,201.53	2,825.66		5,027.19
650 Supplies & Fees – Technology Related	1,606.05	1,600.43		3,206.48
Total Supplies	\$3,807.58	\$4,426.09		\$8,233.67
Total 1210 Life Skills Support	\$251,495.08	\$352,508.57	\$60,021.68	\$664,025.33

LEA : 116605003 Mifflinburg Area SD

Printed 11/22/2020 1:32:56 PM

General Fund (10)

1220 Sensory Support	Elementary	Secondary	Federal	Total
100 Personnel Services – Salaries				
100 Personnel Services – Salaries	106,472.07	62,655.93		169,128.00
Total Personnel Services – Salaries	\$106,472.07	\$62,655.93		\$169,128.00
200 Personnel Services – Employee Benefits				
210 Group Insurance – Contracted Provider	35,665.46	24,331.54		59,997.00
220 Social Security Contributions	8,013.84	4,793.33		12,807.17
230 PSERS Retirement Contributions	36,509.13	21,484.76		57,993.89
250 Unemployment Compensation	219.74	121.13		340.87
260 Workers' Compensation	380.44	223.88		604.32
Total Personnel Services – Employee Benefits	\$80,788.61	\$50,954.64		\$131,743.25
600 Supplies				
610 General Supplies	16.23	3,230.59		3,246.82
Total Supplies	\$16.23	\$3,230.59		\$3,246.82
800 Other Objects				
810 Dues and Fees	1,135.84	523.16		1,659.00
Total Other Objects	\$1,135.84	\$523.16		\$1,659.00
Total 1220 Sensory Support	\$188,412.75	\$117,364.32		\$305,777.07

LEA : 116605003 Mifflinburg Area SD

Printed 11/22/2020 1:32:56 PM

General Fund (10)

1230 Emotional Support	Elementary	Secondary	Federal	Total
100 <u>Personnel Services – Salaries</u>				
100 Personnel Services – Salaries	292,071.50	52,415.74	54,528.53	399,015.77
Total Personnel Services – Salaries	\$292,071.50	\$52,415.74	\$54,528.53	\$399,015.77
200 <u>Personnel Services – Employee Benefits</u>				
210 Group Insurance – Contracted Provider	59,590.00	22,617.00		82,207.00
220 Social Security Contributions	21,928.15	4,009.84	4,132.78	30,070.77
230 PSERS Retirement Contributions	96,770.73	17,973.31	12,077.20	126,821.24
250 Unemployment Compensation	987.42	133.65	331.10	1,452.17
260 Workers' Compensation	1,125.73	191.94	164.76	1,482.43
Total Personnel Services – Employee Benefits	\$180,402.03	\$44,925.74	\$16,705.84	\$242,033.61
300 <u>Purchased Professional and Technical Services</u>				
322 Professional Educational Services – lus	860.11	188,000.45		188,860.56
Total Purchased Professional and Technical Services	\$860.11	\$188,000.45		\$188,860.56
500 <u>Other Purchased Services</u>				
561 Tuition To Other School Districts Within the State	25.47	5,069.33		5,094.80
Total Other Purchased Services	\$25.47	\$5,069.33		\$5,094.80
600 <u>Supplies</u>				
610 General Supplies	7,293.64			7,293.64
650 Supplies & Fees – Technology Related	2,446.48			2,446.48
Total Supplies	\$9,740.12			\$9,740.12
Total 1230 Emotional Support	\$483,099.23	\$290,411.26	\$71,234.37	\$844,744.86

LEA : 116605003 Mifflinburg Area SD

Printed 11/22/2020 1:32:56 PM

General Fund (10)				
1240 Academic Support	<u>Elementary</u>	<u>Secondary</u>	<u>Federal</u>	<u>Total</u>
100 <u>Personnel Services – Salaries</u>				
100 Personnel Services – Salaries	214,967.89	406,998.88	47,869.15	669,835.92
Total Personnel Services – Salaries	\$214,967.89	\$406,998.88	\$47,869.15	\$669,835.92
200 <u>Personnel Services – Employee Benefits</u>				
210 Group Insurance – Contracted Provider	6,444.04	79,728.96		86,173.00
220 Social Security Contributions	16,413.70	30,384.92	3,626.55	50,425.17
230 PSERS Retirement Contributions	73,637.31	138,634.20	13,795.95	226,067.46
250 Unemployment Compensation	517.02	1,028.19	279.11	1,824.32
260 Workers' Compensation	783.36	1,513.92	122.46	2,419.74
Total Personnel Services – Employee Benefits	\$97,795.43	\$251,290.19	\$17,824.07	\$366,909.69
300 <u>Purchased Professional and Technical Services</u>				
322 Professional Educational Services – lus	0.90	178.94		179.84
329 Professional Educational Services – Other	13,267.80			13,267.80
Total Purchased Professional and Technical Services	\$13,268.70	\$178.94		\$13,447.64
500 <u>Other Purchased Services</u>				
510 Student Transportation Services	295.61	58,826.39		59,122.00
561 Tuition To Other School Districts Within the State	379.33	4,692.92		5,072.25
562 Tuition To Pennsylvania Charter Schools	44,123.89	47,158.00		91,281.89
580 Travel	5.89	1,171.36		1,177.25
Total Other Purchased Services	\$44,804.72	\$111,848.67		\$156,653.39
600 <u>Supplies</u>				
610 General Supplies	10,792.44	2,172.29		12,964.73
650 Supplies & Fees – Technology Related	1,200.40	1,000.87		2,201.27
Total Supplies	\$11,992.84	\$3,173.16		\$15,166.00
Total 1240 Academic Support	\$382,829.58	\$773,489.84	\$65,693.22	\$1,222,012.64

LEA : 116605003 Mifflinburg Area SD

Printed 11/22/2020 1:32:56 PM

General Fund (10)

1241 Learning Support – Public	Elementary	Secondary	Federal	Total
100 <u>Personnel Services – Salaries</u>				
100 Personnel Services – Salaries	181,002.75	329,712.02	47,869.15	558,583.92
Total Personnel Services – Salaries	\$181,002.75	\$329,712.02	\$47,869.15	\$558,583.92
200 <u>Personnel Services – Employee Benefits</u>				
210 Group Insurance – Contracted Provider	6,444.04	65,416.96		71,861.00
220 Social Security Contributions	13,815.72	24,708.33	3,626.55	42,150.60
230 PSERS Retirement Contributions	61,990.72	112,132.60	13,795.95	187,919.27
250 Unemployment Compensation	446.31	874.35	279.11	1,599.77
260 Workers' Compensation	661.92	1,237.75	122.46	2,022.13
Total Personnel Services – Employee Benefits	\$83,358.71	\$204,369.99	\$17,824.07	\$305,552.77
300 <u>Purchased Professional and Technical Services</u>				
322 Professional Educational Services – lus	0.90	178.94		179.84
329 Professional Educational Services – Other	13,267.80			13,267.80
Total Purchased Professional and Technical Services	\$13,268.70	\$178.94		\$13,447.64
500 <u>Other Purchased Services</u>				
510 Student Transportation Services	295.61	58,826.39		59,122.00
561 Tuition To Other School Districts Within the State	379.33	4,692.92		5,072.25
562 Tuition To Pennsylvania Charter Schools	44,123.89	47,158.00		91,281.89
580 Travel	0.66	131.54		132.20
Total Other Purchased Services	\$44,799.49	\$110,808.85		\$155,608.34
600 <u>Supplies</u>				
610 General Supplies	10,010.79	77.64		10,088.43
650 Supplies & Fees – Technology Related	1,200.40	199.25		1,399.65
Total Supplies	\$11,211.19	\$276.89		\$11,488.08
Total 1241 Learning Support – Public	\$333,640.84	\$645,346.69	\$65,693.22	\$1,044,680.75

LEA : 116605003 Mifflinburg Area SD

Printed 11/22/2020 1:32:56 PM

General Fund (10)

1243 Gifted Support	Elementary	Secondary	Federal	Total
100 <u>Personnel Services – Salaries</u>				
100 Personnel Services – Salaries	33,965.14	77,286.86		111,252.00
Total Personnel Services – Salaries	\$33,965.14	\$77,286.86		\$111,252.00
200 <u>Personnel Services – Employee Benefits</u>				
210 Group Insurance – Contracted Provider		14,312.00		14,312.00
220 Social Security Contributions	2,597.98	5,676.59		8,274.57
230 PSERS Retirement Contributions	11,646.59	26,501.60		38,148.19
250 Unemployment Compensation	70.71	153.84		224.55
260 Workers' Compensation	121.44	276.17		397.61
Total Personnel Services – Employee Benefits	\$14,436.72	\$46,920.20		\$61,356.92
500 <u>Other Purchased Services</u>				
580 Travel	5.23	1,039.82		1,045.05
Total Other Purchased Services	\$5.23	\$1,039.82		\$1,045.05
600 <u>Supplies</u>				
610 General Supplies	781.65	2,094.65		2,876.30
650 Supplies & Fees – Technology Related		801.62		801.62
Total Supplies	\$781.65	\$2,896.27		\$3,677.92
Total 1243 Gifted Support	\$49,188.74	\$128,143.15		\$177,331.89

LEA : 116605003 Mifflinburg Area SD

Printed 11/22/2020 1:32:56 PM

General Fund (10)				
1260 Physical Support	<u>Elementary</u>	<u>Secondary</u>	<u>Federal</u>	<u>Total</u>
300 <u>Purchased Professional and Technical Services</u>				
322 Professional Educational Services – lus	91.43	18,195.23		18,286.66
329 Professional Educational Services – Other	503.16	100,128.04		100,631.20
Total Purchased Professional and Technical Services	\$594.59	\$118,323.27		\$118,917.86
600 <u>Supplies</u>				
610 General Supplies	24.25	4,825.25		4,849.50
Total Supplies	\$24.25	\$4,825.25		\$4,849.50
Total 1260 Physical Support	\$618.84	\$123,148.52		\$123,767.36

LEA : 116605003 Mifflinburg Area SD

Printed 11/22/2020 1:32:56 PM

General Fund (10)

1270 Multi-Handicapped Support	<u>Elementary</u>	<u>Secondary</u>	<u>Federal</u>	<u>Total</u>
100 <u>Personnel Services – Salaries</u>				
100 Personnel Services – Salaries	59,605.28	146,383.26	31,457.44	237,445.98
Total Personnel Services – Salaries	\$59,605.28	\$146,383.26	\$31,457.44	\$237,445.98
200 <u>Personnel Services – Employee Benefits</u>				
210 Group Insurance – Contracted Provider	9,908.40	52,071.60	22,644.00	84,624.00
220 Social Security Contributions	4,483.38	10,966.63	2,392.24	17,842.25
230 PSERS Retirement Contributions	20,438.52	50,194.91	10,521.61	81,155.04
250 Unemployment Compensation	164.29	389.80	83.95	638.04
260 Workers' Compensation	223.48	552.32	91.56	867.36
Total Personnel Services – Employee Benefits	\$35,218.07	\$114,175.26	\$35,733.36	\$185,126.69
300 <u>Purchased Professional and Technical Services</u>				
330 Other Professional Services	36.44	7,250.56		7,287.00
Total Purchased Professional and Technical Services	\$36.44	\$7,250.56		\$7,287.00
600 <u>Supplies</u>				
610 General Supplies	600.42	8,861.10		9,461.52
650 Supplies & Fees – Technology Related	804.43	1,600.43		2,404.86
Total Supplies	\$1,404.85	\$10,461.53		\$11,866.38
Total 1270 Multi-Handicapped Support	\$96,264.64	\$278,270.61	\$67,190.80	\$441,726.05

LEA : 116605003 Mifflinburg Area SD

Printed 11/22/2020 1:32:56 PM

General Fund (10)

1290 Special Programs - Other Support	<u>Elementary</u>	<u>Secondary</u>	<u>Federal</u>	<u>Total</u>
300 <u>Purchased Professional and Technical Services</u> 322 Professional Educational Services – Ius	63.62	12,660.93		12,724.55
Total Purchased Professional and Technical Services	\$63.62	\$12,660.93		\$12,724.55
500 <u>Other Purchased Services</u> 561 Tuition To Other School Districts Within the State 567 Tuition To Approved Private Schools (APS) and PA Chartered Schools for the Deaf and Blind 568 Tuition To Private Residential Rehabilitative Institutions (PRRI) [In-State] and Detention Centers 594 IU Payment By Withholding for Institutionalized Children's Programs – Special Classes		103,219.60		103,219.60
	160,012.01	147,421.66		307,433.67
	41,152.96	125,140.26		166,293.22
	489.44	3,164.28		3,653.72
Total Other Purchased Services	\$201,654.41	\$378,945.80		\$580,600.21
800 <u>Other Objects</u> 890 Miscellaneous Expenditures	13.64	2,713.63		2,727.27
Total Other Objects	\$13.64	\$2,713.63		\$2,727.27
Total 1290 Special Programs - Other Support	\$201,731.67	\$394,320.36		\$596,052.03

LEA : 116605003 Mifflinburg Area SD

Printed 11/22/2020 1:32:56 PM

General Fund (10)

1300 Vocational Education

	<u>Elementary</u>	<u>Secondary</u>	<u>Federal</u>	<u>Total</u>
100 <u>Personnel Services – Salaries</u>				
100 Personnel Services – Salaries		118,212.17		118,212.17
Total Personnel Services – Salaries		\$118,212.17		\$118,212.17
200 <u>Personnel Services – Employee Benefits</u>				
210 Group Insurance – Contracted Provider		36,216.00		36,216.00
220 Social Security Contributions		8,815.94		8,815.94
230 PSERS Retirement Contributions		40,449.09		40,449.09
250 Unemployment Compensation		241.24		241.24
260 Workers' Compensation		424.87		424.87
Total Personnel Services – Employee Benefits		\$86,147.14		\$86,147.14
500 <u>Other Purchased Services</u>				
564 Tuition To Career and Technology Centers		1,527,956.94		1,527,956.94
Total Other Purchased Services		\$1,527,956.94		\$1,527,956.94
600 <u>Supplies</u>				
610 General Supplies		9,578.22		9,578.22
Total Supplies		\$9,578.22		\$9,578.22
Total 1300 Vocational Education		\$1,741,894.47		\$1,741,894.47

LEA : 116605003 Mifflinburg Area SD

Printed 11/22/2020 1:32:56 PM

General Fund (10)

1400 Other Instructional Programs – Elementary / Secondary	Elementary	Secondary	Federal	Total
100 Personnel Services – Salaries				
100 Personnel Services – Salaries	7.32	5,855.68	445.72	6,308.72
Total Personnel Services – Salaries	\$7.32	\$5,855.68	\$445.72	\$6,308.72
200 Personnel Services – Employee Benefits				
220 Social Security Contributions	0.54	442.22	34.09	476.85
230 PSERS Retirement Contributions	2.51	2,007.92	152.83	2,163.26
250 Unemployment Compensation		2.54	2.76	5.30
260 Workers' Compensation	0.03	25.78	1.96	27.77
Total Personnel Services – Employee Benefits	\$3.08	\$2,478.46	\$191.64	\$2,673.18
500 Other Purchased Services				
567 Tuition To Approved Private Schools (APS) and PA Chartered Schools for the Deaf and Blind	23,982.34	37,064.66		61,047.00
568 Tuition To Private Residential Rehabilitative Institutions (PRRI) [In-State] and Detention Centers	3,949.57	44,568.55		48,518.12
Total Other Purchased Services	\$27,931.91	\$81,633.21		\$109,565.12
600 Supplies				
610 General Supplies	0.29	58.22		58.51
Total Supplies	\$0.29	\$58.22		\$58.51
Total 1400 Other Instructional Programs – Elementary / Secondary	\$27,942.60	\$90,025.57	\$637.36	\$118,605.53

LEA : 116605003 Mifflinburg Area SD

Printed 11/22/2020 1:32:56 PM

General Fund (10)

1420 Summer School

	<u>Elementary</u>	<u>Secondary</u>	<u>Federal</u>	<u>Total</u>
100 <u>Personnel Services – Salaries</u>				
100 Personnel Services – Salaries	1.86	4,029.14	445.72	4,476.72
Total Personnel Services – Salaries	\$1.86	\$4,029.14	\$445.72	\$4,476.72
200 <u>Personnel Services – Employee Benefits</u>				
220 Social Security Contributions	0.14	306.50	34.09	340.73
230 PSERS Retirement Contributions	0.64	1,381.58	152.83	1,535.05
250 Unemployment Compensation			2.76	2.76
260 Workers' Compensation	0.01	17.74	1.96	19.71
Total Personnel Services – Employee Benefits	\$0.79	\$1,705.82	\$191.64	\$1,898.25
600 <u>Supplies</u>				
610 General Supplies	0.29	58.22		58.51
Total Supplies	\$0.29	\$58.22		\$58.51
Total 1420 Summer School	\$2.94	\$5,793.18	\$637.36	\$6,433.48

LEA : 116605003 Mifflinburg Area SD

Printed 11/22/2020 1:32:56 PM

General Fund (10)

1430 Homebound Instruction	<u>Elementary</u>	<u>Secondary</u>	<u>Federal</u>	<u>Total</u>
100 <u>Personnel Services – Salaries</u>				
100 Personnel Services – Salaries	5.46	1,826.54		1,832.00
Total Personnel Services – Salaries	\$5.46	\$1,826.54		\$1,832.00
200 <u>Personnel Services – Employee Benefits</u>				
220 Social Security Contributions	0.40	135.72		136.12
230 PSERS Retirement Contributions	1.87	626.34		628.21
250 Unemployment Compensation		2.54		2.54
260 Workers' Compensation	0.02	8.04		8.06
Total Personnel Services – Employee Benefits	\$2.29	\$772.64		\$774.93
Total 1430 Homebound Instruction	\$7.75	\$2,599.18		\$2,606.93

LEA : 116605003 Mifflinburg Area SD

Printed 11/22/2020 1:32:56 PM

General Fund (10)

1440 Alternative Regular Education Programs	<u>Elementary</u>	<u>Secondary</u>	<u>Federal</u>	<u>Total</u>
500 <u>Other Purchased Services</u>				
567 Tuition To Approved Private Schools (APS) and PA Chartered Schools for the Deaf and Blind	23,982.34	37,064.66		61,047.00
568 Tuition To Private Residential Rehabilitative Institutions (PRRI) [In-State] and Detention Centers	3,949.57	44,568.55		48,518.12
Total Other Purchased Services	\$27,931.91	\$81,633.21		\$109,565.12
Total 1440 Alternative Regular Education Programs	\$27,931.91	\$81,633.21		\$109,565.12

LEA : 116605003 Mifflinburg Area SD

Printed 11/22/2020 1:32:56 PM

General Fund (10)

1442 Alternative Education Programs	<u>Elementary</u>	<u>Secondary</u>	<u>Federal</u>	<u>Total</u>
500 <u>Other Purchased Services</u>				
567 Tuition To Approved Private Schools (APS) and PA Chartered Schools for the Deaf and Blind	23,982.34	37,064.66		61,047.00
568 Tuition To Private Residential Rehabilitative Institutions (PRRI) [In-State] and Detention Centers	3,949.57	44,568.55		48,518.12
Total Other Purchased Services	\$27,931.91	\$81,633.21		\$109,565.12
Total 1442 Alternative Education Programs	\$27,931.91	\$81,633.21		\$109,565.12

LEA : 116605003 Mifflinburg Area SD

Printed 11/22/2020 1:32:56 PM

General Fund (10)

1600 Adult Education Programs	<u>Elementary</u>	<u>Secondary</u>	<u>Federal</u>	<u>Total</u>
100 <u>Personnel Services – Salaries</u>				
100 Personnel Services – Salaries				2,919.70
Total Personnel Services – Salaries				\$2,919.70
200 <u>Personnel Services – Employee Benefits</u>				
220 Social Security Contributions				223.36
250 Unemployment Compensation				21.00
260 Workers’ Compensation				10.37
Total Personnel Services – Employee Benefits				\$254.73
Total 1600 Adult Education Programs				\$3,174.43

LEA : 116605003 Mifflinburg Area SD

Printed 11/22/2020 1:33:04 PM

General Fund (10)

2000 Support Services

	Total
100 Personnel Services – Salaries	
100 Personnel Services – Salaries	3,426,317.99
Total Personnel Services – Salaries	\$3,426,317.99
200 Personnel Services – Employee Benefits	
210 Group Insurance – Contracted Provider	1,354,976.48
220 Social Security Contributions	257,331.47
230 PSERS Retirement Contributions	1,132,498.58
240 Tuition Reimbursement	76,888.67
250 Unemployment Compensation	8,820.69
260 Workers' Compensation	12,153.32
291 Other Retirement Plans	50.00
299 All Other Employee Benefits	53,077.39
Total Personnel Services – Employee Benefits	\$2,895,796.60
300 Purchased Professional and Technical Services	
310 Official / Administrative Services	700.00
322 Professional Educational Services – Ius	44,135.37
329 Professional Educational Services – Other	11,578.65
330 Other Professional Services	76,021.26
340 Technical Services	27,208.00
350 Security / Safety Services	36,952.29
360 Employee Training and Development Services	28,003.68
390 Other Purchased Professional and Technical Services	30,741.30
Total Purchased Professional and Technical Services	\$255,340.55
400 Purchased Property Services	
410 Cleaning Services	12,454.00
420 Utility Services	78,004.83
430 Repairs and Maintenance Services	136,059.08
440 Rentals	21,257.40
460 Extermination Services	8,224.00
490 Other Purchased Property Services	13,393.82
Total Purchased Property Services	\$269,393.13
500 Other Purchased Services	
513 Contracted Carriers	1,647,026.90
516 Student Transportation Services From the IU	94,235.17
520 Insurance – General	8,008.00
522 Automotive Liability Insurance	6,611.00
523 General Property and Liability Insurance	92,542.00
530 Communications	30,339.08
549 Other Advertising/Public Relations	39,222.75
550 Printing and Binding	15,325.11
580 Travel	9,584.40
591 Services Purchased Locally	7,934.47
Total Other Purchased Services	\$1,950,828.88

LEA : 116605003 Mifflinburg Area SD

Printed 11/22/2020 1:33:04 PM

General Fund (10)

2000 Support Services

Total

600 <u>Supplies</u>	
610 General Supplies	737,448.89
620 Energy	567,395.18
640 Books and Periodicals	10,264.78
650 Supplies & Fees – Technology Related	234,463.16
Total Supplies	\$1,549,572.01
700 <u>Property</u>	
752 Capital Equipment – Original and Additional	5,665.00
766 Capitalized Technology Equipment – Replacement	75,585.00
Total Property	\$81,250.00
800 <u>Other Objects</u>	
810 Dues and Fees	268,292.60
890 Miscellaneous Expenditures	3,049.65
Total Other Objects	\$271,342.25
Total 2000 Support Services	\$10,699,841.41

LEA : 116605003 Mifflinburg Area SD

Printed 11/22/2020 1:33:04 PM

General Fund (10)

2100 Support Services – Students	Elementary	Secondary	Federal	Total
100 <u>Personnel Services – Salaries</u>				
100 Personnel Services – Salaries	124,172.32	300,708.38	24,512.99	609,830.48
Total Personnel Services – Salaries	\$124,172.32	\$300,708.38	\$24,512.99	\$609,830.48
200 <u>Personnel Services – Employee Benefits</u>				
210 Group Insurance – Contracted Provider	44,660.28	70,328.72		160,421.18
220 Social Security Contributions	9,277.01	23,098.29	1,535.66	45,830.34
230 PSERS Retirement Contributions	42,585.95	104,538.70	6,903.88	209,007.81
250 Unemployment Compensation	244.71	765.05	33.87	1,447.32
260 Workers' Compensation	443.96	1,080.57	88.54	2,182.97
299 All Other Employee Benefits				499.75
Total Personnel Services – Employee Benefits	\$97,211.91	\$199,811.33	\$8,561.95	\$419,389.37
300 <u>Purchased Professional and Technical Services</u>				
322 Professional Educational Services – Ius	213.90	42,564.41		42,778.31
330 Other Professional Services	166.64	33,805.86		33,972.50
340 Technical Services	5.74	1,143.26		1,149.00
Total Purchased Professional and Technical Services	\$386.28	\$77,513.53		\$77,899.81
500 <u>Other Purchased Services</u>				
530 Communications				600.00
580 Travel	0.66	130.34		599.74
Total Other Purchased Services	\$0.66	\$130.34		\$1,199.74
600 <u>Supplies</u>				
610 General Supplies	3,914.59	20,579.17		25,110.91
650 Supplies & Fees – Technology Related	940.89	6,534.58		7,475.47
Total Supplies	\$4,855.48	\$27,113.75		\$32,586.38
800 <u>Other Objects</u>				
810 Dues and Fees	3.90	776.90		945.80
Total Other Objects	\$3.90	\$776.90		\$945.80
Total 2100 Support Services – Students	\$226,630.55	\$606,054.23	\$33,074.94	\$1,141,851.58

LEA : 116605003 Mifflinburg Area SD

Printed 11/22/2020 1:33:04 PM

General Fund (10)				
2120 Guidance Services	<u>Elementary</u>	<u>Secondary</u>	<u>Federal</u>	<u>Total</u>
100 <u>Personnel Services – Salaries</u>				
100 Personnel Services – Salaries	123,726.01	211,891.90		335,617.91
Total Personnel Services – Salaries	\$123,726.01	\$211,891.90		\$335,617.91
200 <u>Personnel Services – Employee Benefits</u>				
210 Group Insurance – Contracted Provider	44,567.25	51,816.75		96,384.00
220 Social Security Contributions	9,241.23	15,978.98		25,220.21
230 PSERS Retirement Contributions	42,425.40	72,589.40		115,014.80
250 Unemployment Compensation	243.13	451.00		694.13
260 Workers' Compensation	442.34	758.06		1,200.40
Total Personnel Services – Employee Benefits	\$96,919.35	\$141,594.19		\$238,513.54
300 <u>Purchased Professional and Technical Services</u>				
330 Other Professional Services	166.64	33,162.36		33,329.00
340 Technical Services	5.74	1,143.26		1,149.00
Total Purchased Professional and Technical Services	\$172.38	\$34,305.62		\$34,478.00
600 <u>Supplies</u>				
610 General Supplies	3,889.85	15,654.93		19,544.78
650 Supplies & Fees – Technology Related	926.39	3,649.06		4,575.45
Total Supplies	\$4,816.24	\$19,303.99		\$24,120.23
Total 2120 Guidance Services	\$225,633.98	\$407,095.70		\$632,729.68

LEA : 116605003 Mifflinburg Area SD

Printed 11/22/2020 1:33:04 PM

General Fund (10)				
2130 Attendance Services				
	<u>Elementary</u>	<u>Secondary</u>	<u>Federal</u>	<u>Total</u>
100 <u>Personnel Services – Salaries</u>				
100 Personnel Services – Salaries				58,361.74
Total Personnel Services – Salaries				\$58,361.74
200 <u>Personnel Services – Employee Benefits</u>				
210 Group Insurance – Contracted Provider				11,368.18
220 Social Security Contributions				4,375.86
230 PSERS Retirement Contributions				20,012.14
250 Unemployment Compensation				118.26
260 Workers' Compensation				208.63
299 All Other Employee Benefits				499.75
Total Personnel Services – Employee Benefits				\$36,582.82
500 <u>Other Purchased Services</u>				
530 Communications				600.00
580 Travel				468.74
Total Other Purchased Services				\$1,068.74
600 <u>Supplies</u>				
610 General Supplies				370.40
Total Supplies				\$370.40
800 <u>Other Objects</u>				
810 Dues and Fees				70.00
Total Other Objects				\$70.00
Total 2130 Attendance Services				\$96,453.70

LEA : 116605003 Mifflinburg Area SD

Printed 11/22/2020 1:33:04 PM

General Fund (10)				
2140 Psychological Services	<u>Elementary</u>	<u>Secondary</u>	<u>Federal</u>	<u>Total</u>
100 <u>Personnel Services – Salaries</u>				
100 Personnel Services – Salaries	446.31	88,816.48	24,512.99	113,775.78
Total Personnel Services – Salaries	\$446.31	\$88,816.48	\$24,512.99	\$113,775.78
200 <u>Personnel Services – Employee Benefits</u>				
210 Group Insurance – Contracted Provider	93.03	18,511.97		18,605.00
220 Social Security Contributions	35.78	7,119.31	1,535.66	8,690.75
230 PSERS Retirement Contributions	160.55	31,949.30	6,903.88	39,013.73
250 Unemployment Compensation	1.58	314.05	33.87	349.50
260 Workers' Compensation	1.62	322.51	88.54	412.67
Total Personnel Services – Employee Benefits	\$292.56	\$58,217.14	\$8,561.95	\$67,071.65
300 <u>Purchased Professional and Technical Services</u>				
330 Other Professional Services		643.50		643.50
Total Purchased Professional and Technical Services		\$643.50		\$643.50
500 <u>Other Purchased Services</u>				
580 Travel	0.66	130.34		131.00
Total Other Purchased Services	\$0.66	\$130.34		\$131.00
600 <u>Supplies</u>				
610 General Supplies	24.74	4,924.24		4,948.98
650 Supplies & Fees – Technology Related	14.50	2,885.52		2,900.02
Total Supplies	\$39.24	\$7,809.76		\$7,849.00
800 <u>Other Objects</u>				
810 Dues and Fees	3.90	776.90		780.80
Total Other Objects	\$3.90	\$776.90		\$780.80
Total 2140 Psychological Services	\$782.67	\$156,394.12	\$33,074.94	\$190,251.73

LEA : 116605003 Mifflinburg Area SD

Printed 11/22/2020 1:33:04 PM

General Fund (10)

2150 Speech Pathology and Audiology Services	<u>Elementary</u>	<u>Secondary</u>	<u>Federal</u>	<u>Total</u>
300 <u>Purchased Professional and Technical Services</u>				
322 Professional Educational Services – lus	213.90	42,564.41		42,778.31
Total Purchased Professional and Technical Services	\$213.90	\$42,564.41		\$42,778.31
Total 2150 Speech Pathology and Audiology Services	\$213.90	\$42,564.41		\$42,778.31

LEA : 116605003 Mifflinburg Area SD

Printed 11/22/2020 1:33:04 PM

General Fund (10)

2160 Social Work Services

Elementary Secondary Federal Total

100 <u>Personnel Services – Salaries</u>				
100 Personnel Services – Salaries				102,075.05
Total Personnel Services – Salaries				\$102,075.05
200 <u>Personnel Services – Employee Benefits</u>				
210 Group Insurance – Contracted Provider				34,064.00
220 Social Security Contributions				7,543.52
230 PSERS Retirement Contributions				34,967.14
250 Unemployment Compensation				285.43
260 Workers' Compensation				361.27
Total Personnel Services – Employee Benefits				\$77,221.36
600 <u>Supplies</u>				
610 General Supplies				246.75
Total Supplies				\$246.75
800 <u>Other Objects</u>				
810 Dues and Fees				95.00
Total Other Objects				\$95.00
Total 2160 Social Work Services				\$179,638.16

LEA : 116605003 Mifflinburg Area SD

Printed 11/22/2020 1:33:04 PM

General Fund (10)

2200 Support Services – Instructional Staff	Elementary	Secondary	Federal	Total
100 <u>Personnel Services – Salaries</u>				
100 Personnel Services – Salaries	47,223.13	312,512.03	35,800.76	395,535.92
Total Personnel Services – Salaries	\$47,223.13	\$312,512.03	\$35,800.76	\$395,535.92
200 <u>Personnel Services – Employee Benefits</u>				
210 Group Insurance – Contracted Provider	9,428.59	79,239.23	28,776.00	117,443.82
220 Social Security Contributions	3,579.65	23,738.96	2,708.53	30,027.14
230 PSERS Retirement Contributions	15,532.74	106,723.51	8,463.44	130,719.69
240 Tuition Reimbursement	27,180.02	44,098.95		71,278.97
250 Unemployment Compensation	172.07	669.98	220.87	1,062.92
260 Workers' Compensation	183.63	1,119.34	96.91	1,399.88
299 All Other Employee Benefits	20.50	4,079.50		4,100.00
Total Personnel Services – Employee Benefits	\$56,097.20	\$259,669.47	\$40,265.75	\$356,032.42
300 <u>Purchased Professional and Technical Services</u>				
329 Professional Educational Services – Other	25.94	5,161.76		5,187.70
340 Technical Services	129.85	25,929.15		26,059.00
360 Employee Training and Development Services	48.32	11,768.99	11,350.00	23,167.31
Total Purchased Professional and Technical Services	\$204.11	\$42,859.90	\$11,350.00	\$54,414.01
500 <u>Other Purchased Services</u>				
530 Communications	6.00	1,194.00		1,200.00
580 Travel	431.85	2,426.13	1,451.93	4,309.91
Total Other Purchased Services	\$437.85	\$3,620.13	\$1,451.93	\$5,509.91
600 <u>Supplies</u>				
610 General Supplies	7,438.68	57,786.10	780.19	66,004.97
640 Books and Periodicals	9,461.63	803.15		10,264.78
650 Supplies & Fees – Technology Related	6,378.62	34,508.67	2,475.00	43,362.29
Total Supplies	\$23,278.93	\$93,097.92	\$3,255.19	\$119,632.04
800 <u>Other Objects</u>				
810 Dues and Fees	2.32	461.68		464.00
Total Other Objects	\$2.32	\$461.68		\$464.00
Total 2200 Support Services – Instructional Staff	\$127,243.54	\$712,221.13	\$92,123.63	\$931,588.30

LEA : 116605003 Mifflinburg Area SD

Printed 11/22/2020 1:33:04 PM

General Fund (10)				
2220 Technology Support Services	<u>Elementary</u>	<u>Secondary</u>	<u>Federal</u>	<u>Total</u>
300 <u>Purchased Professional and Technical Services</u>				
340 Technical Services	129.85	25,840.15		25,970.00
Total Purchased Professional and Technical Services	\$129.85	\$25,840.15		\$25,970.00
600 <u>Supplies</u>				
610 General Supplies	106.20	21,133.28		21,239.48
650 Supplies & Fees – Technology Related	14.22	2,829.37		2,843.59
Total Supplies	\$120.42	\$23,962.65		\$24,083.07
Total 2220 Technology Support Services	\$250.27	\$49,802.80		\$50,053.07

LEA : 116605003 Mifflinburg Area SD

Printed 11/22/2020 1:33:04 PM

General Fund (10)				
2250 School Library Services	<u>Elementary</u>	<u>Secondary</u>	<u>Federal</u>	<u>Total</u>
100 <u>Personnel Services – Salaries</u>				
100 Personnel Services – Salaries	45,896.83	48,578.16	33,688.01	128,163.00
Total Personnel Services – Salaries	\$45,896.83	\$48,578.16	\$33,688.01	\$128,163.00
200 <u>Personnel Services – Employee Benefits</u>				
210 Group Insurance – Contracted Provider	9,075.85	9,044.15	28,776.00	46,896.00
220 Social Security Contributions	3,478.88	3,685.75	2,548.49	9,713.12
230 PSERS Retirement Contributions	15,077.95	16,220.38	7,738.96	39,037.29
250 Unemployment Compensation	169.64	186.66	219.79	576.09
260 Workers' Compensation	178.96	190.80	87.60	457.36
Total Personnel Services – Employee Benefits	\$27,981.28	\$29,327.74	\$39,370.84	\$96,679.86
600 <u>Supplies</u>				
610 General Supplies	7,316.36	33,442.79		40,759.15
640 Books and Periodicals	9,461.63	803.15		10,264.78
650 Supplies & Fees – Technology Related	6,227.03	4,342.05		10,569.08
Total Supplies	\$23,005.02	\$38,587.99		\$61,593.01
Total 2250 School Library Services	\$96,883.13	\$116,493.89	\$73,058.85	\$286,435.87

LEA : 116605003 Mifflinburg Area SD

Printed 11/22/2020 1:33:04 PM

General Fund (10)

2260 Instruction and Curriculum Development Services	Elementary	Secondary	Federal	Total
100 <u>Personnel Services – Salaries</u>				
100 Personnel Services – Salaries	1,274.30	253,585.87	2,112.75	256,972.92
Total Personnel Services – Salaries	\$1,274.30	\$253,585.87	\$2,112.75	\$256,972.92
200 <u>Personnel Services – Employee Benefits</u>				
210 Group Insurance – Contracted Provider	352.74	70,195.08		70,547.82
220 Social Security Contributions	96.83	19,269.52	160.04	19,526.39
230 PSERS Retirement Contributions	436.96	86,954.80	724.48	88,116.24
250 Unemployment Compensation	2.43	483.32	1.08	486.83
260 Workers' Compensation	4.54	902.08	9.31	915.93
299 All Other Employee Benefits	20.50	4,079.50		4,100.00
Total Personnel Services – Employee Benefits	\$914.00	\$181,884.30	\$894.91	\$183,693.21
300 <u>Purchased Professional and Technical Services</u>				
340 Technical Services		89.00		89.00
Total Purchased Professional and Technical Services		\$89.00		\$89.00
500 <u>Other Purchased Services</u>				
530 Communications	6.00	1,194.00		1,200.00
580 Travel	3.87	769.31		773.18
Total Other Purchased Services	\$9.87	\$1,963.31		\$1,973.18
600 <u>Supplies</u>				
610 General Supplies	11.38	2,265.90		2,277.28
650 Supplies & Fees – Technology Related	123.87	24,650.75		24,774.62
Total Supplies	\$135.25	\$26,916.65		\$27,051.90
800 <u>Other Objects</u>				
810 Dues and Fees	2.32	461.68		464.00
Total Other Objects	\$2.32	\$461.68		\$464.00
Total 2260 Instruction and Curriculum Development Services	\$2,335.74	\$464,900.81	\$3,007.66	\$470,244.21

LEA : 116605003 Mifflinburg Area SD

Printed 11/22/2020 1:33:04 PM

General Fund (10)

2270 Instructional Staff Professional Development Services	Elementary	Secondary	Federal	Total
100 <u>Personnel Services – Salaries</u>				
100 Personnel Services – Salaries	52.00	10,348.00		10,400.00
Total Personnel Services – Salaries	\$52.00	\$10,348.00		\$10,400.00
200 <u>Personnel Services – Employee Benefits</u>				
220 Social Security Contributions	3.94	783.69		787.63
230 PSERS Retirement Contributions	17.83	3,548.33		3,566.16
240 Tuition Reimbursement	27,180.02	44,098.95		71,278.97
260 Workers' Compensation	0.13	26.46		26.59
Total Personnel Services – Employee Benefits	\$27,201.92	\$48,457.43		\$75,659.35
300 <u>Purchased Professional and Technical Services</u>				
329 Professional Educational Services – Other	25.94	5,161.76		5,187.70
360 Employee Training and Development Services	48.32	11,768.99	11,350.00	23,167.31
Total Purchased Professional and Technical Services	\$74.26	\$16,930.75	\$11,350.00	\$28,355.01
500 <u>Other Purchased Services</u>				
580 Travel	427.98	1,656.82	1,451.93	3,536.73
Total Other Purchased Services	\$427.98	\$1,656.82	\$1,451.93	\$3,536.73
600 <u>Supplies</u>				
610 General Supplies	4.74	944.13	780.19	1,729.06
650 Supplies & Fees – Technology Related	13.50	2,686.50	2,475.00	5,175.00
Total Supplies	\$18.24	\$3,630.63	\$3,255.19	\$6,904.06
Total 2270 Instructional Staff Professional Development Services	\$27,774.40	\$81,023.63	\$16,057.12	\$124,855.15

LEA : 116605003 Mifflinburg Area SD

Printed 11/22/2020 1:33:04 PM

General Fund (10)				
2300 Support Services – Administration	<u>Elementary</u>	<u>Secondary</u>	<u>Federal</u>	<u>Total</u>
100 <u>Personnel Services – Salaries</u>				
100 Personnel Services – Salaries	279,428.10	394,254.98		858,592.21
Total Personnel Services – Salaries	\$279,428.10	\$394,254.98		\$858,592.21
200 <u>Personnel Services – Employee Benefits</u>				
210 Group Insurance – Contracted Provider	108,101.88	108,093.36		265,514.37
220 Social Security Contributions	20,986.34	29,557.67		64,190.00
230 PSERS Retirement Contributions	95,815.61	135,190.05		293,168.68
250 Unemployment Compensation	649.03	792.47		1,742.34
260 Workers' Compensation	1,004.04	1,371.65		3,036.08
299 All Other Employee Benefits	9,858.40	4,791.60		20,765.39
Total Personnel Services – Employee Benefits	\$236,415.30	\$279,796.80		\$648,416.86
300 <u>Purchased Professional and Technical Services</u>				
310 Official / Administrative Services				700.00
329 Professional Educational Services – Other				400.00
330 Other Professional Services				34,992.50
390 Other Purchased Professional and Technical Services				1,296.86
Total Purchased Professional and Technical Services				\$37,389.36
400 <u>Purchased Property Services</u>				
430 Repairs and Maintenance Services	14,981.56	9,664.88		24,646.44
440 Rentals	9,573.27	9,911.61		19,484.88
Total Purchased Property Services	\$24,554.83	\$19,576.49		\$44,131.32
500 <u>Other Purchased Services</u>				
520 Insurance – General				8,008.00
530 Communications	1,256.15	2,693.85		3,950.00
549 Other Advertising/Public Relations				39,222.75
550 Printing and Binding				15,325.11
580 Travel	0.52	149.48		1,227.65
591 Services Purchased Locally				7,784.47
Total Other Purchased Services	\$1,256.67	\$2,843.33		\$75,517.98
600 <u>Supplies</u>				
610 General Supplies	11,002.13	23,835.11		37,598.92
Total Supplies	\$11,002.13	\$23,835.11		\$37,598.92
800 <u>Other Objects</u>				
810 Dues and Fees	2.42	689.58		263,071.84
Total Other Objects	\$2.42	\$689.58		\$263,071.84
Total 2300 Support Services – Administration	\$552,659.45	\$720,996.29		\$1,964,718.49

LEA : 116605003 Mifflinburg Area SD

Printed 11/22/2020 1:33:04 PM

General Fund (10)				
2310 Board Services	<u>Elementary</u>	<u>Secondary</u>	<u>Federal</u>	<u>Total</u>
100 <u>Personnel Services – Salaries</u>				
100 Personnel Services – Salaries				3,570.06
Total Personnel Services – Salaries				\$3,570.06
200 <u>Personnel Services – Employee Benefits</u>				
220 Social Security Contributions				262.92
230 PSERS Retirement Contributions				1,224.08
250 Unemployment Compensation				10.38
260 Workers' Compensation				12.65
Total Personnel Services – Employee Benefits				\$1,510.03
300 <u>Purchased Professional and Technical Services</u>				
310 Official / Administrative Services				700.00
330 Other Professional Services				14,650.00
390 Other Purchased Professional and Technical Services				701.86
Total Purchased Professional and Technical Services				\$16,051.86
500 <u>Other Purchased Services</u>				
520 Insurance – General				8,008.00
549 Other Advertising/Public Relations				39,222.75
Total Other Purchased Services				\$47,230.75
600 <u>Supplies</u>				
610 General Supplies				64.72
Total Supplies				\$64.72
800 <u>Other Objects</u>				
810 Dues and Fees				33,559.84
Total Other Objects				\$33,559.84
Total 2310 Board Services				\$101,987.26

LEA : 116605003 Mifflinburg Area SD

Printed 11/22/2020 1:33:04 PM

General Fund (10)

2330 Tax Assessment and Collection Services	<u>Elementary</u>	<u>Secondary</u>	<u>Federal</u>	<u>Total</u>
100 <u>Personnel Services – Salaries</u>				
100 Personnel Services – Salaries				765.00
Total Personnel Services – Salaries				\$765.00
200 <u>Personnel Services – Employee Benefits</u>				
220 Social Security Contributions				58.56
Total Personnel Services – Employee Benefits				\$58.56
500 <u>Other Purchased Services</u>				
550 Printing and Binding				13,990.11
591 Services Purchased Locally				7,784.47
Total Other Purchased Services				\$21,774.58
Total 2330 Tax Assessment and Collection Services				\$22,598.14

LEA : 116605003 Mifflinburg Area SD

Printed 11/22/2020 1:33:04 PM

General Fund (10)

2350 Legal and Accounting Services	<u>Elementary</u>	<u>Secondary</u>	<u>Federal</u>	<u>Total</u>
300 <u>Purchased Professional and Technical Services</u>				
330 Other Professional Services				20,342.50
Total Purchased Professional and Technical Services				\$20,342.50
500 <u>Other Purchased Services</u>				
580 Travel				364.35
Total Other Purchased Services				\$364.35
Total 2350 Legal and Accounting Services				\$20,706.85

LEA : 116605003 Mifflinburg Area SD

Printed 11/22/2020 1:33:04 PM

General Fund (10)				
2360 Office of the Superintendent / Executive Director Services	<u>Elementary</u>	<u>Secondary</u>	<u>Federal</u>	<u>Total</u>
100 <u>Personnel Services – Salaries</u>				
100 Personnel Services – Salaries				180,574.07
Total Personnel Services – Salaries				\$180,574.07
200 <u>Personnel Services – Employee Benefits</u>				
210 Group Insurance – Contracted Provider				49,319.13
220 Social Security Contributions				13,324.51
230 PSERS Retirement Contributions				60,938.94
250 Unemployment Compensation				290.46
260 Workers' Compensation				647.74
299 All Other Employee Benefits				6,115.39
Total Personnel Services – Employee Benefits				\$130,636.17
300 <u>Purchased Professional and Technical Services</u>				
329 Professional Educational Services – Other				400.00
Total Purchased Professional and Technical Services				\$400.00
500 <u>Other Purchased Services</u>				
530 Communications	3.00	597.00		600.00
580 Travel				713.30
Total Other Purchased Services	\$3.00	\$597.00		\$1,313.30
600 <u>Supplies</u>				
610 General Supplies				2,696.96
Total Supplies				\$2,696.96
800 <u>Other Objects</u>				
810 Dues and Fees				2,857.00
Total Other Objects				\$2,857.00
Total 2360 Office of the Superintendent / Executive Director Services	\$3.00	\$597.00		\$318,477.50

LEA : 116605003 Mifflinburg Area SD

Printed 11/22/2020 1:33:04 PM

General Fund (10)

2370 Community Relations Services	<u>Elementary</u>	<u>Secondary</u>	<u>Federal</u>	<u>Total</u>
300 <u>Purchased Professional and Technical Services</u>				
390 Other Purchased Professional and Technical Services				595.00
Total Purchased Professional and Technical Services				\$595.00
500 <u>Other Purchased Services</u>				
550 Printing and Binding				1,335.00
Total Other Purchased Services				\$1,335.00
Total 2370 Community Relations Services				\$1,930.00

LEA : 116605003 Mifflinburg Area SD

Printed 11/22/2020 1:33:04 PM

General Fund (10)

2380 Office of the Principal Services	Elementary	Secondary	Federal	Total
100 <u>Personnel Services – Salaries</u>				
100 Personnel Services – Salaries	279,428.10	394,254.98		673,683.08
Total Personnel Services – Salaries	\$279,428.10	\$394,254.98		\$673,683.08
200 <u>Personnel Services – Employee Benefits</u>				
210 Group Insurance – Contracted Provider	108,101.88	108,093.36		216,195.24
220 Social Security Contributions	20,986.34	29,557.67		50,544.01
230 PSERS Retirement Contributions	95,815.61	135,190.05		231,005.66
250 Unemployment Compensation	649.03	792.47		1,441.50
260 Workers' Compensation	1,004.04	1,371.65		2,375.69
299 All Other Employee Benefits	9,858.40	4,791.60		14,650.00
Total Personnel Services – Employee Benefits	\$236,415.30	\$279,796.80		\$516,212.10
400 <u>Purchased Property Services</u>				
430 Repairs and Maintenance Services	14,981.56	9,664.88		24,646.44
440 Rentals	9,573.27	9,911.61		19,484.88
Total Purchased Property Services	\$24,554.83	\$19,576.49		\$44,131.32
500 <u>Other Purchased Services</u>				
530 Communications	1,253.15	2,096.85		3,350.00
580 Travel	0.52	149.48		150.00
Total Other Purchased Services	\$1,253.67	\$2,246.33		\$3,500.00
600 <u>Supplies</u>				
610 General Supplies	11,002.13	23,835.11		34,837.24
Total Supplies	\$11,002.13	\$23,835.11		\$34,837.24
800 <u>Other Objects</u>				
810 Dues and Fees	2.42	689.58		692.00
Total Other Objects	\$2.42	\$689.58		\$692.00
Total 2380 Office of the Principal Services	\$552,656.45	\$720,399.29		\$1,273,055.74

LEA : 116605003 Mifflinburg Area SD

Printed 11/22/2020 1:33:04 PM

General Fund (10)

2390 Other Administration Services	<u>Elementary</u>	<u>Secondary</u>	<u>Federal</u>	<u>Total</u>
800 <u>Other Objects</u>				
810 Dues and Fees				225,963.00
Total Other Objects				\$225,963.00
Total 2390 Other Administration Services				\$225,963.00

LEA : 116605003 Mifflinburg Area SD

Printed 11/22/2020 1:33:04 PM

General Fund (10)

2400 Support Services – Pupil Health	<u>Elementary</u>	<u>Secondary</u>	<u>Federal</u>	<u>Total</u>
100 <u>Personnel Services – Salaries</u>				
100 Personnel Services – Salaries				153,647.31
Total Personnel Services – Salaries				\$153,647.31
200 <u>Personnel Services – Employee Benefits</u>				
210 Group Insurance – Contracted Provider				84,312.00
220 Social Security Contributions				11,478.81
230 PSERS Retirement Contributions				50,801.61
250 Unemployment Compensation				429.97
260 Workers' Compensation				554.29
Total Personnel Services – Employee Benefits				\$147,576.68
300 <u>Purchased Professional and Technical Services</u>				
329 Professional Educational Services – Other				2,620.00
330 Other Professional Services				74.00
390 Other Purchased Professional and Technical Services				195.00
Total Purchased Professional and Technical Services				\$2,889.00
600 <u>Supplies</u>				
610 General Supplies				4,773.90
Total Supplies				\$4,773.90
Total 2400 Support Services – Pupil Health				\$308,886.89

LEA : 116605003 Mifflinburg Area SD

Printed 11/22/2020 1:33:04 PM

General Fund (10)

2440 Nursing Services

	<u>Elementary</u>	<u>Secondary</u>	<u>Federal</u>	<u>Total</u>
100 <u>Personnel Services – Salaries</u>				
100 Personnel Services – Salaries				153,647.31
Total Personnel Services – Salaries				\$153,647.31
200 <u>Personnel Services – Employee Benefits</u>				
210 Group Insurance – Contracted Provider				84,312.00
220 Social Security Contributions				11,478.81
230 PSERS Retirement Contributions				50,801.61
250 Unemployment Compensation				429.97
260 Workers' Compensation				554.29
Total Personnel Services – Employee Benefits				\$147,576.68
300 <u>Purchased Professional and Technical Services</u>				
329 Professional Educational Services – Other				2,620.00
330 Other Professional Services				74.00
390 Other Purchased Professional and Technical Services				195.00
Total Purchased Professional and Technical Services				\$2,889.00
600 <u>Supplies</u>				
610 General Supplies				4,773.90
Total Supplies				\$4,773.90
Total 2440 Nursing Services				\$308,886.89

LEA : 116605003 Mifflinburg Area SD

Printed 11/22/2020 1:33:04 PM

General Fund (10)				
2500 Support Services – Business	<u>Elementary</u>	<u>Secondary</u>	<u>Federal</u>	<u>Total</u>
100 <u>Personnel Services – Salaries</u>				
100 Personnel Services – Salaries				221,144.87
Total Personnel Services – Salaries				\$221,144.87
200 <u>Personnel Services – Employee Benefits</u>				
210 Group Insurance – Contracted Provider				109,652.49
220 Social Security Contributions				16,517.49
230 PSERS Retirement Contributions				75,021.40
250 Unemployment Compensation				459.05
260 Workers' Compensation				792.32
299 All Other Employee Benefits				4,899.00
Total Personnel Services – Employee Benefits				\$207,341.75
300 <u>Purchased Professional and Technical Services</u>				
330 Other Professional Services				6,200.00
Total Purchased Professional and Technical Services				\$6,200.00
400 <u>Purchased Property Services</u>				
430 Repairs and Maintenance Services				1,091.46
440 Rentals				1,772.52
Total Purchased Property Services				\$2,863.98
500 <u>Other Purchased Services</u>				
530 Communications				600.00
580 Travel				741.93
591 Services Purchased Locally				150.00
Total Other Purchased Services				\$1,491.93
600 <u>Supplies</u>				
610 General Supplies				4,418.70
650 Supplies & Fees – Technology Related				6,780.55
Total Supplies				\$11,199.25
800 <u>Other Objects</u>				
810 Dues and Fees				3,520.96
890 Miscellaneous Expenditures				2,891.39
Total Other Objects				\$6,412.35
Total 2500 Support Services – Business				\$456,654.13

LEA : 116605003 Mifflinburg Area SD

Printed 11/22/2020 1:33:04 PM

General Fund (10)				
2510 Fiscal Services	<u>Elementary</u>	<u>Secondary</u>	<u>Federal</u>	<u>Total</u>
100 <u>Personnel Services – Salaries</u>				
100 Personnel Services – Salaries				221,144.87
Total Personnel Services – Salaries				\$221,144.87
200 <u>Personnel Services – Employee Benefits</u>				
210 Group Insurance – Contracted Provider				109,652.49
220 Social Security Contributions				16,517.49
230 PSERS Retirement Contributions				75,021.40
250 Unemployment Compensation				459.05
260 Workers' Compensation				792.32
299 All Other Employee Benefits				4,899.00
Total Personnel Services – Employee Benefits				\$207,341.75
400 <u>Purchased Property Services</u>				
430 Repairs and Maintenance Services				1,091.46
440 Rentals				1,772.52
Total Purchased Property Services				\$2,863.98
500 <u>Other Purchased Services</u>				
530 Communications				600.00
580 Travel				741.93
591 Services Purchased Locally				150.00
Total Other Purchased Services				\$1,491.93
600 <u>Supplies</u>				
610 General Supplies				4,418.70
650 Supplies & Fees – Technology Related				6,780.55
Total Supplies				\$11,199.25
800 <u>Other Objects</u>				
810 Dues and Fees				3,520.96
890 Miscellaneous Expenditures				2,891.39
Total Other Objects				\$6,412.35
Total 2510 Fiscal Services				\$450,454.13

LEA : 116605003 Mifflinburg Area SD

Printed 11/22/2020 1:33:04 PM

General Fund (10)				
2511 Supervision of Fiscal Services - Head of Component	<u>Elementary</u>	<u>Secondary</u>	<u>Federal</u>	<u>Total</u>
100 <u>Personnel Services – Salaries</u>				
100 Personnel Services – Salaries				115,660.42
Total Personnel Services – Salaries				\$115,660.42
200 <u>Personnel Services – Employee Benefits</u>				
210 Group Insurance – Contracted Provider				29,456.49
220 Social Security Contributions				8,808.14
230 PSERS Retirement Contributions				38,850.69
250 Unemployment Compensation				171.31
260 Workers' Compensation				415.16
299 All Other Employee Benefits				4,899.00
Total Personnel Services – Employee Benefits				\$82,600.79
400 <u>Purchased Property Services</u>				
430 Repairs and Maintenance Services				1,091.46
440 Rentals				1,772.52
Total Purchased Property Services				\$2,863.98
500 <u>Other Purchased Services</u>				
530 Communications				600.00
580 Travel				731.57
591 Services Purchased Locally				150.00
Total Other Purchased Services				\$1,481.57
600 <u>Supplies</u>				
610 General Supplies				3,894.48
650 Supplies & Fees – Technology Related				6,780.55
Total Supplies				\$10,675.03
800 <u>Other Objects</u>				
810 Dues and Fees				3,455.96
890 Miscellaneous Expenditures				2,891.39
Total Other Objects				\$6,347.35
Total 2511 Supervision of Fiscal Services - Head of Component				\$219,629.14

LEA : 116605003 Mifflinburg Area SD

Printed 11/22/2020 1:33:04 PM

General Fund (10)

2513 Receiving and Disbursing Funds Services

Elementary Secondary Federal Total

100 <u>Personnel Services – Salaries</u>				
100 Personnel Services – Salaries				66,128.49
Total Personnel Services – Salaries				\$66,128.49
200 <u>Personnel Services – Employee Benefits</u>				
210 Group Insurance – Contracted Provider				51,420.00
220 Social Security Contributions				4,907.37
230 PSERS Retirement Contributions				22,675.49
250 Unemployment Compensation				187.80
260 Workers' Compensation				236.53
Total Personnel Services – Employee Benefits				\$79,427.19
600 <u>Supplies</u>				
610 General Supplies				358.45
Total Supplies				\$358.45
Total 2513 Receiving and Disbursing Funds Services				\$145,914.13

LEA : 116605003 Mifflinburg Area SD

Printed 11/22/2020 1:33:04 PM

General Fund (10)

2514 Payroll Services

	<u>Elementary</u>	<u>Secondary</u>	<u>Federal</u>	<u>Total</u>
100 <u>Personnel Services – Salaries</u>				
100 Personnel Services – Salaries				39,355.96
Total Personnel Services – Salaries				\$39,355.96
200 <u>Personnel Services – Employee Benefits</u>				
210 Group Insurance – Contracted Provider				28,776.00
220 Social Security Contributions				2,801.98
230 PSERS Retirement Contributions				13,495.22
250 Unemployment Compensation				99.94
260 Workers' Compensation				140.63
Total Personnel Services – Employee Benefits				\$45,313.77
500 <u>Other Purchased Services</u>				
580 Travel				10.36
Total Other Purchased Services				\$10.36
600 <u>Supplies</u>				
610 General Supplies				165.77
Total Supplies				\$165.77
800 <u>Other Objects</u>				
810 Dues and Fees				65.00
Total Other Objects				\$65.00
Total 2514 Payroll Services				\$84,910.86

LEA : 116605003 Mifflinburg Area SD

Printed 11/22/2020 1:33:04 PM

General Fund (10)

2590 Other Support Services – Business

Elementary

Secondary

Federal

Total

300 Purchased Professional and Technical Services

330 Other Professional Services

6,200.00

Total Purchased Professional and Technical Services				\$6,200.00
Total 2590 Other Support Services – Business				\$6,200.00

LEA : 116605003 Mifflinburg Area SD

Printed 11/22/2020 1:33:04 PM

General Fund (10)				
2600 Operation and Maintenance of Plant Services	<u>Elementary</u>	<u>Secondary</u>	<u>Federal</u>	<u>Total</u>
100 <u>Personnel Services – Salaries</u>				
100 Personnel Services – Salaries				808,192.45
Total Personnel Services – Salaries				\$808,192.45
200 <u>Personnel Services – Employee Benefits</u>				
210 Group Insurance – Contracted Provider				462,211.97
220 Social Security Contributions				61,006.30
230 PSERS Retirement Contributions				244,753.50
250 Unemployment Compensation				2,716.58
260 Workers' Compensation				2,870.57
291 Other Retirement Plans				50.00
299 All Other Employee Benefits				1,200.00
Total Personnel Services – Employee Benefits				\$774,808.92
300 <u>Purchased Professional and Technical Services</u>				
350 Security / Safety Services				36,952.29
390 Other Purchased Professional and Technical Services				25,049.44
Total Purchased Professional and Technical Services				\$62,001.73
400 <u>Purchased Property Services</u>				
410 Cleaning Services				12,454.00
420 Utility Services				76,005.01
430 Repairs and Maintenance Services				103,170.46
460 Extermination Services				8,224.00
490 Other Purchased Property Services				13,393.82
Total Purchased Property Services				\$213,247.29
500 <u>Other Purchased Services</u>				
522 Automotive Liability Insurance				6,611.00
523 General Property and Liability Insurance				92,542.00
530 Communications				22,489.08
580 Travel				1,202.39
Total Other Purchased Services				\$122,844.47
600 <u>Supplies</u>				
610 General Supplies	5,607.11	344,745.10		350,352.21
620 Energy				562,069.68
Total Supplies	\$5,607.11	\$344,745.10		\$912,421.89
700 <u>Property</u>				
752 Capital Equipment – Original and Additional				5,665.00
Total Property				\$5,665.00
800 <u>Other Objects</u>				
890 Miscellaneous Expenditures				20.00
Total Other Objects				\$20.00
Total 2600 Operation and Maintenance of Plant Services	\$5,607.11	\$344,745.10		\$2,899,201.75

LEA : 116605003 Mifflinburg Area SD

Printed 11/22/2020 1:33:04 PM

General Fund (10)

2610 Supervision of Operation and Maintenance of Plant Services	<u>Elementary</u>	<u>Secondary</u>	<u>Federal</u>	<u>Total</u>
100 <u>Personnel Services – Salaries</u>				
100 Personnel Services – Salaries				67,637.01
Total Personnel Services – Salaries				\$67,637.01
200 <u>Personnel Services – Employee Benefits</u>				
210 Group Insurance – Contracted Provider				26,481.97
220 Social Security Contributions				5,099.59
230 PSERS Retirement Contributions				23,192.72
250 Unemployment Compensation				127.25
260 Workers' Compensation				241.79
299 All Other Employee Benefits				1,200.00
Total Personnel Services – Employee Benefits				\$56,343.32
500 <u>Other Purchased Services</u>				
580 Travel				1,202.39
Total Other Purchased Services				\$1,202.39
Total 2610 Supervision of Operation and Maintenance of Plant Services				\$125,182.72

LEA : 116605003 Mifflinburg Area SD

Printed 11/22/2020 1:33:04 PM

General Fund (10)				
2611 Supervision of Operation and Maintenance of Plant Services – Head of Component	<u>Elementary</u>	<u>Secondary</u>	<u>Federal</u>	<u>Total</u>
100 <u>Personnel Services – Salaries</u>				
100 Personnel Services – Salaries				67,637.01
Total Personnel Services – Salaries				\$67,637.01
200 <u>Personnel Services – Employee Benefits</u>				
210 Group Insurance – Contracted Provider				26,481.97
220 Social Security Contributions				5,099.59
230 PSERS Retirement Contributions				23,192.72
250 Unemployment Compensation				127.25
260 Workers' Compensation				241.79
299 All Other Employee Benefits				1,200.00
Total Personnel Services – Employee Benefits				\$56,343.32
500 <u>Other Purchased Services</u>				
580 Travel				1,202.39
Total Other Purchased Services				\$1,202.39
Total 2611 Supervision of Operation and Maintenance of Plant Services – Head of Component				\$125,182.72

LEA : 116605003 Mifflinburg Area SD

Printed 11/22/2020 1:33:04 PM

General Fund (10)				
2620 Operation of Buildings Services	<u>Elementary</u>	<u>Secondary</u>	<u>Federal</u>	<u>Total</u>
100 <u>Personnel Services – Salaries</u>				
100 Personnel Services – Salaries				639,987.19
Total Personnel Services – Salaries				\$639,987.19
200 <u>Personnel Services – Employee Benefits</u>				
210 Group Insurance – Contracted Provider				435,730.00
220 Social Security Contributions				48,213.23
230 PSERS Retirement Contributions				216,276.59
250 Unemployment Compensation				2,098.08
260 Workers' Compensation				2,274.63
291 Other Retirement Plans				50.00
Total Personnel Services – Employee Benefits				\$704,642.53
300 <u>Purchased Professional and Technical Services</u>				
350 Security / Safety Services				36,952.29
390 Other Purchased Professional and Technical Services				24,603.15
Total Purchased Professional and Technical Services				\$61,555.44
400 <u>Purchased Property Services</u>				
410 Cleaning Services				12,454.00
420 Utility Services				76,005.01
430 Repairs and Maintenance Services				97,538.04
460 Extermination Services				8,224.00
490 Other Purchased Property Services				13,393.82
Total Purchased Property Services				\$207,614.87
500 <u>Other Purchased Services</u>				
522 Automotive Liability Insurance				6,611.00
523 General Property and Liability Insurance				92,542.00
530 Communications				21,814.08
Total Other Purchased Services				\$120,967.08
600 <u>Supplies</u>				
610 General Supplies	4,923.90	208,785.94		213,709.84
620 Energy				554,967.66
Total Supplies	\$4,923.90	\$208,785.94		\$768,677.50
700 <u>Property</u>				
752 Capital Equipment – Original and Additional				5,665.00
Total Property				\$5,665.00
800 <u>Other Objects</u>				
890 Miscellaneous Expenditures				20.00
Total Other Objects				\$20.00
Total 2620 Operation of Buildings Services	\$4,923.90	\$208,785.94		\$2,509,129.61

LEA : 116605003 Mifflinburg Area SD

Printed 11/22/2020 1:33:04 PM

General Fund (10)

2630 Care and Upkeep of Grounds Services	<u>Elementary</u>	<u>Secondary</u>	<u>Federal</u>	<u>Total</u>
300 <u>Purchased Professional and Technical Services</u>				
390 Other Purchased Professional and Technical Services				446.29
Total Purchased Professional and Technical Services				\$446.29
Total 2630 Care and Upkeep of Grounds Services				\$446.29

LEA : 116605003 Mifflinburg Area SD

Printed 11/22/2020 1:33:04 PM

General Fund (10)				
2650 Vehicle Operation and Maintenance Services (Other Than Student Transportation Vehicles)	<u>Elementary</u>	<u>Secondary</u>	<u>Federal</u>	<u>Total</u>
400 <u>Purchased Property Services</u>				
430 Repairs and Maintenance Services				5,632.42
Total Purchased Property Services				\$5,632.42
600 <u>Supplies</u>				
610 General Supplies	6.70	1,333.87		1,340.57
620 Energy				7,102.02
Total Supplies	\$6.70	\$1,333.87		\$8,442.59
Total 2650 Vehicle Operation and Maintenance Services (Other Than Student Transportation Vehicles)	\$6.70	\$1,333.87		\$14,075.01

LEA : 116605003 Mifflinburg Area SD

Printed 11/22/2020 1:33:04 PM

General Fund (10)

2660 Safety and Security Services	Elementary	Secondary	Federal	Total
100 <u>Personnel Services – Salaries</u>				
100 Personnel Services – Salaries				100,568.25
Total Personnel Services – Salaries				\$100,568.25
200 <u>Personnel Services – Employee Benefits</u>				
220 Social Security Contributions				7,693.48
230 PSERS Retirement Contributions				5,284.19
250 Unemployment Compensation				491.25
260 Workers' Compensation				354.15
Total Personnel Services – Employee Benefits				\$13,823.07
500 <u>Other Purchased Services</u>				
530 Communications				675.00
Total Other Purchased Services				\$675.00
600 <u>Supplies</u>				
610 General Supplies	676.51	134,625.29		135,301.80
Total Supplies	\$676.51	\$134,625.29		\$135,301.80
Total 2660 Safety and Security Services	\$676.51	\$134,625.29		\$250,368.12

LEA : 116605003 Mifflinburg Area SD

Printed 11/22/2020 1:33:04 PM

General Fund (10)				
2700 Student Transportation Services	<u>Elementary</u>	<u>Secondary</u>	<u>Federal</u>	<u>Total</u>
100 <u>Personnel Services – Salaries</u>				
100 Personnel Services – Salaries			14,397.09	93,978.67
Total Personnel Services – Salaries			\$14,397.09	\$93,978.67
200 <u>Personnel Services – Employee Benefits</u>				
210 Group Insurance – Contracted Provider				11,368.30
220 Social Security Contributions			1,096.13	7,086.98
230 PSERS Retirement Contributions			3,887.92	31,176.42
250 Unemployment Compensation			41.97	280.25
260 Workers' Compensation			38.48	340.42
Total Personnel Services – Employee Benefits			\$5,064.50	\$50,252.37
300 <u>Purchased Professional and Technical Services</u>				
329 Professional Educational Services – Other			3,370.95	3,370.95
Total Purchased Professional and Technical Services			\$3,370.95	\$3,370.95
400 <u>Purchased Property Services</u>				
420 Utility Services				1,999.82
430 Repairs and Maintenance Services				3,706.51
Total Purchased Property Services				\$5,706.33
500 <u>Other Purchased Services</u>				
513 Contracted Carriers				1,647,026.90
516 Student Transportation Services From the IU				94,235.17
Total Other Purchased Services				\$1,741,262.07
600 <u>Supplies</u>				
610 General Supplies				473.60
620 Energy				5,325.50
650 Supplies & Fees – Technology Related				4,250.00
Total Supplies				\$10,049.10
800 <u>Other Objects</u>				
810 Dues and Fees				220.00
Total Other Objects				\$220.00
Total 2700 Student Transportation Services			\$22,832.54	\$1,904,839.49

LEA : 116605003 Mifflinburg Area SD

Printed 11/22/2020 1:33:04 PM

General Fund (10)

2710 Supervision of Student Transportation Services	<u>Elementary</u>	<u>Secondary</u>	<u>Federal</u>	<u>Total</u>
100 <u>Personnel Services – Salaries</u>				
100 Personnel Services – Salaries				58,361.22
Total Personnel Services – Salaries				\$58,361.22
200 <u>Personnel Services – Employee Benefits</u>				
210 Group Insurance – Contracted Provider				11,368.30
220 Social Security Contributions				4,375.84
230 PSERS Retirement Contributions				20,012.13
250 Unemployment Compensation				118.26
260 Workers' Compensation				208.64
Total Personnel Services – Employee Benefits				\$36,083.17
800 <u>Other Objects</u>				
810 Dues and Fees				220.00
Total Other Objects				\$220.00
Total 2710 Supervision of Student Transportation Services				\$94,664.39

LEA : 116605003 Mifflinburg Area SD

Printed 11/22/2020 1:33:04 PM

General Fund (10)

2711 Supervision of Student Transportation Services – Head of Component	<u>Elementary</u>	<u>Secondary</u>	<u>Federal</u>	<u>Total</u>
100 <u>Personnel Services – Salaries</u>				
100 Personnel Services – Salaries				58,361.22
Total Personnel Services – Salaries				\$58,361.22
200 <u>Personnel Services – Employee Benefits</u>				
210 Group Insurance – Contracted Provider				11,368.30
220 Social Security Contributions				4,375.84
230 PSERS Retirement Contributions				20,012.13
250 Unemployment Compensation				118.26
260 Workers' Compensation				208.64
Total Personnel Services – Employee Benefits				\$36,083.17
800 <u>Other Objects</u>				
810 Dues and Fees				220.00
Total Other Objects				\$220.00
Total 2711 Supervision of Student Transportation Services – Head of Component				\$94,664.39

LEA : 116605003 Mifflinburg Area SD

Printed 11/22/2020 1:33:04 PM

General Fund (10)				
2720 Vehicle Operation Services	<u>Elementary</u>	<u>Secondary</u>	<u>Federal</u>	<u>Total</u>
400 <u>Purchased Property Services</u>				
420 Utility Services				1,999.82
430 Repairs and Maintenance Services				3,706.51
Total Purchased Property Services				\$5,706.33
500 <u>Other Purchased Services</u>				
513 Contracted Carriers				1,498,794.46
516 Student Transportation Services From the IU				94,235.17
Total Other Purchased Services				\$1,593,029.63
600 <u>Supplies</u>				
610 General Supplies				473.60
620 Energy				5,325.50
650 Supplies & Fees – Technology Related				4,250.00
Total Supplies				\$10,049.10
Total 2720 Vehicle Operation Services				\$1,608,785.06

LEA : 116605003 Mifflinburg Area SD

Printed 11/22/2020 1:33:04 PM

General Fund (10)

2730 Monitoring Services

	<u>Elementary</u>	<u>Secondary</u>	<u>Federal</u>	<u>Total</u>
100 <u>Personnel Services – Salaries</u>				
100 Personnel Services – Salaries			14,397.09	35,617.45
Total Personnel Services – Salaries			\$14,397.09	\$35,617.45
200 <u>Personnel Services – Employee Benefits</u>				
220 Social Security Contributions			1,096.13	2,711.14
230 PSERS Retirement Contributions			3,887.92	11,164.29
250 Unemployment Compensation			41.97	161.99
260 Workers' Compensation			38.48	131.78
Total Personnel Services – Employee Benefits			\$5,064.50	\$14,169.20
300 <u>Purchased Professional and Technical Services</u>				
329 Professional Educational Services – Other			3,370.95	3,370.95
Total Purchased Professional and Technical Services			\$3,370.95	\$3,370.95
Total 2730 Monitoring Services			\$22,832.54	\$53,157.60

LEA : 116605003 Mifflinburg Area SD

Printed 11/22/2020 1:33:04 PM

General Fund (10)				
2750 Nonpublic Transportation	<u>Elementary</u>	<u>Secondary</u>	<u>Federal</u>	<u>Total</u>
500 <u>Other Purchased Services</u>				
513 Contracted Carriers				148,232.44
Total Other Purchased Services				\$148,232.44
Total 2750 Nonpublic Transportation				\$148,232.44

LEA : 116605003 Mifflinburg Area SD

Printed 11/22/2020 1:33:04 PM

General Fund (10)				
2800 Support Services – Central	<u>Elementary</u>	<u>Secondary</u>	<u>Federal</u>	<u>Total</u>
100 <u>Personnel Services – Salaries</u>				
100 Personnel Services – Salaries				285,396.08
Total Personnel Services – Salaries				\$285,396.08
200 <u>Personnel Services – Employee Benefits</u>				
210 Group Insurance – Contracted Provider				144,052.35
220 Social Security Contributions				21,194.41
230 PSERS Retirement Contributions				97,849.47
240 Tuition Reimbursement				5,609.70
250 Unemployment Compensation				682.26
260 Workers' Compensation				976.79
299 All Other Employee Benefits				21,613.25
Total Personnel Services – Employee Benefits				\$291,978.23
300 <u>Purchased Professional and Technical Services</u>				
322 Professional Educational Services – lus				1,357.06
330 Other Professional Services				782.26
360 Employee Training and Development Services				4,836.37
390 Other Purchased Professional and Technical Services				4,200.00
Total Purchased Professional and Technical Services				\$11,175.69
400 <u>Purchased Property Services</u>				
430 Repairs and Maintenance Services				3,444.21
Total Purchased Property Services				\$3,444.21
500 <u>Other Purchased Services</u>				
530 Communications				1,500.00
580 Travel				1,502.78
Total Other Purchased Services				\$3,002.78
600 <u>Supplies</u>				
610 General Supplies				248,715.68
650 Supplies & Fees – Technology Related				172,594.85
Total Supplies				\$421,310.53
700 <u>Property</u>				
766 Capitalized Technology Equipment – Replacement				75,585.00
Total Property				\$75,585.00
800 <u>Other Objects</u>				
810 Dues and Fees				70.00
890 Miscellaneous Expenditures				138.26
Total Other Objects				\$208.26
Total 2800 Support Services – Central				\$1,092,100.78

LEA : 116605003 Mifflinburg Area SD

Printed 11/22/2020 1:33:04 PM

General Fund (10)				
2820 Information Services				
	<u>Elementary</u>	<u>Secondary</u>	<u>Federal</u>	<u>Total</u>
100 <u>Personnel Services – Salaries</u>				
100 Personnel Services – Salaries				285,396.08
Total Personnel Services – Salaries				\$285,396.08
200 <u>Personnel Services – Employee Benefits</u>				
210 Group Insurance – Contracted Provider				144,052.35
220 Social Security Contributions				21,194.41
230 PSERS Retirement Contributions				97,849.47
250 Unemployment Compensation				682.26
260 Workers' Compensation				976.79
299 All Other Employee Benefits				21,613.25
Total Personnel Services – Employee Benefits				\$286,368.53
300 <u>Purchased Professional and Technical Services</u>				
330 Other Professional Services				782.26
390 Other Purchased Professional and Technical Services				4,200.00
Total Purchased Professional and Technical Services				\$4,982.26
400 <u>Purchased Property Services</u>				
430 Repairs and Maintenance Services				3,444.21
Total Purchased Property Services				\$3,444.21
500 <u>Other Purchased Services</u>				
530 Communications				1,500.00
580 Travel				904.03
Total Other Purchased Services				\$2,404.03
600 <u>Supplies</u>				
610 General Supplies				248,715.68
650 Supplies & Fees – Technology Related				172,594.85
Total Supplies				\$421,310.53
700 <u>Property</u>				
766 Capitalized Technology Equipment – Replacement				75,585.00
Total Property				\$75,585.00
800 <u>Other Objects</u>				
810 Dues and Fees				70.00
890 Miscellaneous Expenditures				138.26
Total Other Objects				\$208.26
Total 2820 Information Services				\$1,079,698.90

LEA : 116605003 Mifflinburg Area SD

Printed 11/22/2020 1:33:04 PM

General Fund (10)				
2821 Supervision of Information Services	<u>Elementary</u>	<u>Secondary</u>	<u>Federal</u>	<u>Total</u>
100 <u>Personnel Services – Salaries</u>				
100 Personnel Services – Salaries				95,656.10
Total Personnel Services – Salaries				\$95,656.10
200 <u>Personnel Services – Employee Benefits</u>				
210 Group Insurance – Contracted Provider				26,511.21
220 Social Security Contributions				7,024.62
230 PSERS Retirement Contributions				32,800.48
250 Unemployment Compensation				154.29
260 Workers' Compensation				341.87
299 All Other Employee Benefits				16,063.25
Total Personnel Services – Employee Benefits				\$82,895.72
500 <u>Other Purchased Services</u>				
530 Communications				750.00
580 Travel				231.26
Total Other Purchased Services				\$981.26
600 <u>Supplies</u>				
610 General Supplies				20,270.96
650 Supplies & Fees – Technology Related				12,826.20
Total Supplies				\$33,097.16
800 <u>Other Objects</u>				
810 Dues and Fees				70.00
890 Miscellaneous Expenditures				138.26
Total Other Objects				\$208.26
Total 2821 Supervision of Information Services				\$212,838.50

LEA : 116605003 Mifflinburg Area SD

Printed 11/22/2020 1:33:04 PM

General Fund (10)				
2822 Internal Information Services	<u>Elementary</u>	<u>Secondary</u>	<u>Federal</u>	<u>Total</u>
100 <u>Personnel Services – Salaries</u>				
100 Personnel Services – Salaries				189,739.98
Total Personnel Services – Salaries				\$189,739.98
200 <u>Personnel Services – Employee Benefits</u>				
210 Group Insurance – Contracted Provider				117,541.14
220 Social Security Contributions				14,169.79
230 PSERS Retirement Contributions				65,048.99
250 Unemployment Compensation				527.97
260 Workers' Compensation				634.92
299 All Other Employee Benefits				5,550.00
Total Personnel Services – Employee Benefits				\$203,472.81
300 <u>Purchased Professional and Technical Services</u>				
330 Other Professional Services				782.26
390 Other Purchased Professional and Technical Services				4,200.00
Total Purchased Professional and Technical Services				\$4,982.26
400 <u>Purchased Property Services</u>				
430 Repairs and Maintenance Services				3,444.21
Total Purchased Property Services				\$3,444.21
500 <u>Other Purchased Services</u>				
530 Communications				750.00
580 Travel				672.77
Total Other Purchased Services				\$1,422.77
600 <u>Supplies</u>				
610 General Supplies				228,444.72
650 Supplies & Fees – Technology Related				159,768.65
Total Supplies				\$388,213.37
700 <u>Property</u>				
766 Capitalized Technology Equipment – Replacement				75,585.00
Total Property				\$75,585.00
Total 2822 Internal Information Services				\$866,860.40

LEA : 116605003 Mifflinburg Area SD

Printed 11/22/2020 1:33:04 PM

General Fund (10)

2830 Staff Services	<u>Elementary</u>	<u>Secondary</u>	<u>Federal</u>	<u>Total</u>
200 <u>Personnel Services – Employee Benefits</u>				
240 Tuition Reimbursement				5,609.70
Total Personnel Services – Employee Benefits				\$5,609.70
300 <u>Purchased Professional and Technical Services</u>				
360 Employee Training and Development Services				4,836.37
Total Purchased Professional and Technical Services				\$4,836.37
500 <u>Other Purchased Services</u>				
580 Travel				598.75
Total Other Purchased Services				\$598.75
Total 2830 Staff Services				\$11,044.82

LEA : 116605003 Mifflinburg Area SD

Printed 11/22/2020 1:33:04 PM

General Fund (10)

2834 Staff Development Services – Non-Instructional, Certified Staff Only	<u>Elementary</u>	<u>Secondary</u>	<u>Federal</u>	<u>Total</u>
300 <u>Purchased Professional and Technical Services</u>				
360 Employee Training and Development Services				3,906.37
Total Purchased Professional and Technical Services				\$3,906.37
500 <u>Other Purchased Services</u>				
580 Travel				48.75
Total Other Purchased Services				\$48.75
Total 2834 Staff Development Services – Non-Instructional, Certified Staff Only				\$3,955.12

LEA : 116605003 Mifflinburg Area SD

Printed 11/22/2020 1:33:04 PM

General Fund (10)

2836 Staff Development Services – Non-Instructional, Non-Certified Staff Only	<u>Elementary</u>	<u>Secondary</u>	<u>Federal</u>	<u>Total</u>
200 <u>Personnel Services – Employee Benefits</u>				
240 Tuition Reimbursement				5,609.70
Total Personnel Services – Employee Benefits				\$5,609.70
300 <u>Purchased Professional and Technical Services</u>				
360 Employee Training and Development Services				930.00
Total Purchased Professional and Technical Services				\$930.00
500 <u>Other Purchased Services</u>				
580 Travel				550.00
Total Other Purchased Services				\$550.00
Total 2836 Staff Development Services – Non-Instructional, Non-Certified Staff Only				\$7,089.70

LEA : 116605003 Mifflinburg Area SD

Printed 11/22/2020 1:33:04 PM

General Fund (10)

2860 Management Services

<u>Elementary</u>	<u>Secondary</u>	<u>Federal</u>	<u>Total</u>
-------------------	------------------	----------------	--------------

300 Purchased Professional and Technical Services

322 Professional Educational Services – lus			1,357.06
---	--	--	----------

Total Purchased Professional and Technical Services			\$1,357.06
--	--	--	-------------------

Total 2860 Management Services			\$1,357.06
---------------------------------------	--	--	-------------------

LEA : 116605003 Mifflinburg Area SD

Printed 11/22/2020 1:33:10 PM

General Fund (10)	
3000 Operation of Non-Instructional Services	<u>Total</u>
100 <u>Personnel Services – Salaries</u>	
100 Personnel Services – Salaries	239,979.55
Total Personnel Services – Salaries	\$239,979.55
200 <u>Personnel Services – Employee Benefits</u>	
220 Social Security Contributions	18,281.49
230 PSERS Retirement Contributions	38,110.79
250 Unemployment Compensation	1,147.83
260 Workers' Compensation	870.61
Total Personnel Services – Employee Benefits	\$58,410.72
300 <u>Purchased Professional and Technical Services</u>	
330 Other Professional Services	31,440.01
390 Other Purchased Professional and Technical Services	37,328.00
Total Purchased Professional and Technical Services	\$68,768.01
400 <u>Purchased Property Services</u>	
430 Repairs and Maintenance Services	374.60
Total Purchased Property Services	\$374.60
500 <u>Other Purchased Services</u>	
510 Student Transportation Services	34,152.24
520 Insurance – General	12,093.00
580 Travel	3,778.19
Total Other Purchased Services	\$50,023.43
600 <u>Supplies</u>	
610 General Supplies	80,398.27
650 Supplies & Fees – Technology Related	250.00
Total Supplies	\$80,648.27
800 <u>Other Objects</u>	
810 Dues and Fees	30.00
890 Miscellaneous Expenditures	4,354.00
Total Other Objects	\$4,384.00
Total 3000 Operation of Non-Instructional Services	\$502,588.58

LEA : 116605003 Mifflinburg Area SD

Printed 11/22/2020 1:33:10 PM

General Fund (10)				
3200 Student Activities	<u>Elementary</u>	<u>Secondary</u>	<u>Federal</u>	<u>Total</u>
100 <u>Personnel Services – Salaries</u>				
100 Personnel Services – Salaries				239,979.55
Total Personnel Services – Salaries				\$239,979.55
200 <u>Personnel Services – Employee Benefits</u>				
220 Social Security Contributions				18,281.49
230 PSERS Retirement Contributions				38,110.79
250 Unemployment Compensation				1,147.83
260 Workers' Compensation				870.61
Total Personnel Services – Employee Benefits				\$58,410.72
300 <u>Purchased Professional and Technical Services</u>				
330 Other Professional Services				31,440.01
390 Other Purchased Professional and Technical Services				37,328.00
Total Purchased Professional and Technical Services				\$68,768.01
400 <u>Purchased Property Services</u>				
430 Repairs and Maintenance Services				374.60
Total Purchased Property Services				\$374.60
500 <u>Other Purchased Services</u>				
510 Student Transportation Services				34,152.24
520 Insurance – General				12,093.00
580 Travel				3,778.19
Total Other Purchased Services				\$50,023.43
600 <u>Supplies</u>				
610 General Supplies				79,920.27
650 Supplies & Fees – Technology Related				250.00
Total Supplies				\$80,170.27
800 <u>Other Objects</u>				
810 Dues and Fees				30.00
890 Miscellaneous Expenditures				4,354.00
Total Other Objects				\$4,384.00
Total 3200 Student Activities				\$502,110.58

LEA : 116605003 Mifflinburg Area SD

Printed 11/22/2020 1:33:10 PM

General Fund (10)

3300 Community Services

	<u>Elementary</u>	<u>Secondary</u>	<u>Federal</u>	<u>Total</u>
600 <u>Supplies</u>				
610 General Supplies			478.00	478.00
Total Supplies			\$478.00	\$478.00
Total 3300 Community Services			\$478.00	\$478.00

LEA : 116605003 Mifflinburg Area SD

Printed 11/22/2020 1:33:22 PM

General Fund (10)

5000 Other Expenditures and Financing Uses

Total

800 Other Objects

830 Interest	859,550.96
880 Refunds of Prior Years' Receipts	15.45

Total Other Objects	\$859,566.41
----------------------------	---------------------

900 Other Uses of Funds

910 Redemption of Principal	23,780,000.00
932 Capital Reserve Fund Transfers Applicable To Fund 32	500,000.00
939 Other Fund Transfers	66,626.00

Total Other Uses of Funds	\$24,346,626.00
----------------------------------	------------------------

Total 5000 Other Expenditures and Financing Uses	\$25,206,192.41
---	------------------------

LEA : 116605003 Mifflinburg Area SD

Printed 11/22/2020 1:33:22 PM

General Fund (10)

5100 Debt Service / Other Expenditures and Financing Uses	<u>Elementary</u>	<u>Secondary</u>	<u>Federal</u>	<u>Total</u>
800 <u>Other Objects</u>				
830 Interest				859,550.96
880 Refunds of Prior Years' Receipts				15.45
Total Other Objects				\$859,566.41
900 <u>Other Uses of Funds</u>				
910 Redemption of Principal				23,780,000.00
Total Other Uses of Funds				\$23,780,000.00
Total 5100 Debt Service / Other Expenditures and Financing Uses				\$24,639,566.41

LEA : 116605003 Mifflinburg Area SD

Printed 11/22/2020 1:33:22 PM

General Fund (10)

5110 Debt Service	<u>Elementary</u>	<u>Secondary</u>	<u>Federal</u>	<u>Total</u>
800 <u>Other Objects</u>				
830 Interest				607,586.96
Total Other Objects				\$607,586.96
900 <u>Other Uses of Funds</u>				
910 Redemption of Principal				920,000.00
Total Other Uses of Funds				\$920,000.00
Total 5110 Debt Service				\$1,527,586.96

LEA : 116605003 Mifflinburg Area SD

Printed 11/22/2020 1:33:22 PM

General Fund (10)

5120 Debt Service – Refunded Bonds	<u>Elementary</u>	<u>Secondary</u>	<u>Federal</u>	<u>Total</u>
800 <u>Other Objects</u>				
830 Interest				251,964.00
Total Other Objects				\$251,964.00
900 <u>Other Uses of Funds</u>				
910 Redemption of Principal				22,860,000.00
Total Other Uses of Funds				\$22,860,000.00
Total 5120 Debt Service – Refunded Bonds				\$23,111,964.00

LEA : 116605003 Mifflinburg Area SD

Printed 11/22/2020 1:33:22 PM

General Fund (10)

5130 Refund of Prior Year Revenues / Receipts	<u>Elementary</u>	<u>Secondary</u>	<u>Federal</u>	<u>Total</u>
800 <u>Other Objects</u>				
880 Refunds of Prior Years' Receipts				15.45
Total Other Objects				\$15.45
Total 5130 Refund of Prior Year Revenues / Receipts				\$15.45

LEA : 116605003 Mifflinburg Area SD

Printed 11/22/2020 1:33:22 PM

General Fund (10)

5200 Interfund Transfers – Out	<u>Elementary</u>	<u>Secondary</u>	<u>Federal</u>	<u>Total</u>
900 <u>Other Uses of Funds</u>				
932 Capital Reserve Fund Transfers Applicable To Fund 32				500,000.00
939 Other Fund Transfers				66,626.00
Total Other Uses of Funds				\$566,626.00
Total 5200 Interfund Transfers – Out				\$566,626.00

LEA : 116605003 Mifflinburg Area SD

Printed 11/22/2020 1:33:22 PM

General Fund (10)

5230 Capital Projects Fund Transfers	<u>Elementary</u>	<u>Secondary</u>	<u>Federal</u>	<u>Total</u>
900 <u>Other Uses of Funds</u>				
932 Capital Reserve Fund Transfers Applicable To Fund 32				500,000.00
Total Other Uses of Funds				\$500,000.00
Total 5230 Capital Projects Fund Transfers				\$500,000.00

LEA : 116605003 Mifflinburg Area SD

Printed 11/22/2020 1:33:22 PM

General Fund (10)

5250 Enterprise Fund Transfers	<u>Elementary</u>	<u>Secondary</u>	<u>Federal</u>	<u>Total</u>
900 <u>Other Uses of Funds</u>				
939 Other Fund Transfers				66,626.00
Total Other Uses of Funds				\$66,626.00
Total 5250 Enterprise Fund Transfers				\$66,626.00

LEA : 116605003 Mifflinburg Area SD

Printed 11/22/2020 1:33:16 PM

Capital Reserve Fund - § 1431 (32)

4000 Facilities Acquisition, Construction and Improvement Services

Total

700 Property

710 Land and Improvements

274,852.50

Total Property	\$274,852.50
Total 4000 Facilities Acquisition, Construction and Improvement Services	\$274,852.50

LEA : 116605003 Mifflinburg Area SD

Printed 11/22/2020 1:33:16 PM

Capital Reserve Fund - § 1431 (32)

4200 Existing Site Improvement Services	<u>Elementary</u>	<u>Secondary</u>	<u>Federal</u>	<u>Total</u>
700 <u>Property</u>				
710 Land and Improvements				274,852.50
Total Property				\$274,852.50
Total 4200 Existing Site Improvement Services				\$274,852.50

LEA : 116605003 Mifflinburg Area SD

Printed 11/22/2020 1:33:07 PM

Other Capital Projects Fund (39)

2000 Support Services

Total

800 Other Objects
810 Dues and Fees

431,840.00

Total Other Objects	\$431,840.00
Total 2000 Support Services	\$431,840.00

LEA : 116605003 Mifflinburg Area SD

Printed 11/22/2020 1:33:07 PM

Other Capital Projects Fund (39)

2300 Support Services – Administration

<u>Elementary</u>	<u>Secondary</u>	<u>Federal</u>	<u>Total</u>
-------------------	------------------	----------------	--------------

800 Other Objects

810 Dues and Fees			431,840.00
-------------------	--	--	------------

Total Other Objects			\$431,840.00
----------------------------	--	--	---------------------

Total 2300 Support Services – Administration			\$431,840.00
---	--	--	---------------------

LEA : 116605003 Mifflinburg Area SD

Printed 11/22/2020 1:33:07 PM

Other Capital Projects Fund (39)

2390 Other Administration Services

<u>Elementary</u>	<u>Secondary</u>	<u>Federal</u>	<u>Total</u>
-------------------	------------------	----------------	--------------

800 Other Objects

810 Dues and Fees			431,840.00
-------------------	--	--	------------

Total Other Objects			\$431,840.00
----------------------------	--	--	---------------------

Total 2390 Other Administration Services			\$431,840.00
---	--	--	---------------------

LEA : 116605003 Mifflinburg Area SD

Printed 11/22/2020 1:33:18 PM

Other Capital Projects Fund (39)

4000 Facilities Acquisition, Construction and Improvement Services

Total

400 Purchased Property Services

450 Construction Services	5,079,829.00
Total Purchased Property Services	\$5,079,829.00
Total 4000 Facilities Acquisition, Construction and Improvement Services	\$5,079,829.00

LEA : 116605003 Mifflinburg Area SD

Printed 11/22/2020 1:33:18 PM

Other Capital Projects Fund (39)

4600 Existing Building Improvement Services

<u>Elementary</u>	<u>Secondary</u>	<u>Federal</u>	<u>Total</u>
-------------------	------------------	----------------	--------------

400 Purchased Property Services

450 Construction Services			5,079,829.00
---------------------------	--	--	--------------

Total Purchased Property Services			\$5,079,829.00
--	--	--	-----------------------

Total 4600 Existing Building Improvement Services			\$5,079,829.00
--	--	--	-----------------------

LEA : 116605003 Mifflinburg Area SD

Printed 11/22/2020 1:33:38 PM

	<u>General Fund(10)</u>	<u>Student Sponsored Activity Fund(21)</u>	<u>Public Purpose Trust(27)</u>	<u>Other Compt Approved (28)</u>	<u>Athletic / Activity(29)</u>
1000 <u>Instruction</u>					
1100 Regular Programs - Elementary / Secondary	13,493,142.49				
1200 Special Programs - Elementary / Secondary	4,198,105.34				
1300 Vocational Education	1,741,894.47				
1400 Other Instructional Programs - Elementary / Secondary	118,605.53				
1600 Adult Education Programs	3,174.43				
Total Instruction	\$19,554,922.26				
2000 <u>Support Services</u>					
2100 Support Services - Students	1,141,851.58				
2200 Support Services - Instructional Staff	931,588.30				
2300 Support Services - Administration	1,964,718.49				
2400 Support Services - Pupil Health	308,886.89				
2500 Support Services - Business	456,654.13				
2600 Operation and Maintenance of Plant Services	2,899,201.75				
2700 Student Transportation Services	1,904,839.49				
2800 Support Services - Central	1,092,100.78				
Total Support Services	\$10,699,841.41				
3000 <u>Operation of Non-Instructional Services</u>					
3200 Student Activities	502,110.58				
3300 Community Services	478.00				
Total Operation of Non-Instructional Services	\$502,588.58				
4000 <u>Facilities Acquisition, Construction and Improvement Services</u>					
4200 Existing Site Improvement Services					
4600 Existing Building Improvement Services					
Total Facilities Acquisition, Construction and Improvement Services					
5000 <u>Other Expenditures and Financing Uses</u>					
5100 Debt Service / Other Expenditures and Financing Uses	24,639,566.41				
5200 Interfund Transfers - Out	566,626.00				
Total Other Expenditures and Financing Uses	\$25,206,192.41				
TOTAL ACTUAL EXPENDITURES & OTHER FINANCING USES	\$55,963,544.66				

LEA : 116605003 Mifflinburg Area SD

Printed 11/22/2020 1:33:38 PM

	<u>Capital Reserve (690.1850)(31)</u>	<u>Capital Reserve (1431)(32)</u>	<u>Other Capital Projects Fund(39)</u>	<u>Debt Service(40)</u>	<u>Permanent(90)</u>
1000 <u>Instruction</u>					
1100 Regular Programs - Elementary / Secondary					
1200 Special Programs - Elementary / Secondary					
1300 Vocational Education					
1400 Other Instructional Programs - Elementary / Secondary					
1600 Adult Education Programs					
Total Instruction					
2000 <u>Support Services</u>					
2100 Support Services - Students					
2200 Support Services - Instructional Staff					
2300 Support Services - Administration			431,840.00		
2400 Support Services - Pupil Health					
2500 Support Services - Business					
2600 Operation and Maintenance of Plant Services					
2700 Student Transportation Services					
2800 Support Services - Central					
Total Support Services			\$431,840.00		
3000 <u>Operation of Non-Instructional Services</u>					
3200 Student Activities					
3300 Community Services					
Total Operation of Non-Instructional Services					
4000 <u>Facilities Acquisition, Construction and Improvement Services</u>					
4200 Existing Site Improvement Services		274,852.50			
4600 Existing Building Improvement Services			5,079,829.00		
Total Facilities Acquisition, Construction and Improvement Services		\$274,852.50	\$5,079,829.00		
5000 <u>Other Expenditures and Financing Uses</u>					
5100 Debt Service / Other Expenditures and Financing Uses					
5200 Interfund Transfers - Out					
Total Other Expenditures and Financing Uses					
TOTAL ACTUAL EXPENDITURES & OTHER FINANCING USES		\$274,852.50	\$5,511,669.00		

LEA : 116605003 Mifflinburg Area SD

Printed 11/22/2020 1:33:38 PM

	<u>Total</u>
1000 <u>Instruction</u>	
1100 Regular Programs - Elementary / Secondary	13,493,142.49
1200 Special Programs - Elementary / Secondary	4,198,105.34
1300 Vocational Education	1,741,894.47
1400 Other Instructional Programs - Elementary / Secondary	118,605.53
1600 Adult Education Programs	3,174.43
Total Instruction	\$19,554,922.26
2000 <u>Support Services</u>	
2100 Support Services - Students	1,141,851.58
2200 Support Services - Instructional Staff	931,588.30
2300 Support Services - Administration	2,396,558.49
2400 Support Services - Pupil Health	308,886.89
2500 Support Services - Business	456,654.13
2600 Operation and Maintenance of Plant Services	2,899,201.75
2700 Student Transportation Services	1,904,839.49
2800 Support Services - Central	1,092,100.78
Total Support Services	\$11,131,681.41
3000 <u>Operation of Non-Instructional Services</u>	
3200 Student Activities	502,110.58
3300 Community Services	478.00
Total Operation of Non-Instructional Services	\$502,588.58
4000 <u>Facilities Acquisition, Construction and Improvement Services</u>	
4200 Existing Site Improvement Services	274,852.50
4600 Existing Building Improvement Services	5,079,829.00
Total Facilities Acquisition, Construction and Improvement Services	\$5,354,681.50
5000 <u>Other Expenditures and Financing Uses</u>	
5100 Debt Service / Other Expenditures and Financing Uses	24,639,566.41
5200 Interfund Transfers - Out	566,626.00
Total Other Expenditures and Financing Uses	\$25,206,192.41
TOTAL ACTUAL EXPENDITURES & OTHER FINANCING USES	\$61,750,066.16

LEA : 116605003 Mifflinburg Area SD

Printed 11/22/2020 1:33:47 PM

PSERS Salary Data (Salary Data should relate to the General Fund only)

Amount	Description	Amount
	Total Salary Base for salaries subject to PSERS withholding	12,779,601.69
	Total Federally Funded salaries subject to PSERS withholding	360,745.66

Title I Expenditure Data

Amount	Description	Amount
	Expenditures Funded with Current Title I Funds	503,251.68
	Expenditures Funded with Carry over Title I Funds	
Total Title I Expenditure Data		\$503,251.68

Benefits for Staff Relative to Collective Bargaining Agreements

	OBJECT	COVERED	NOT COVERED	TOTAL
10 General Fund	No Self Insurance data to report			
	211 Medical Insurance	2,523,936.64	1,243,294.00	3,767,230.64
	212 Dental Insurance	81,918.00	31,948.00	113,866.00
	215 Eye Care Insurance			
	216 Prescription Insurance			
	271 Self-Insurance Medical Benefits			
	272 Self-Insurance Dental Benefits			
	275 Self-Insurance Eye Care Benefits			
	276 Self-Insurance Prescription Benefits			
	FUND TOTAL	\$2,605,854.64	\$1,275,242.00	\$3,881,096.64
50 Enterprise Fund	No Self Insurance data to report			
	211 Medical Insurance		20,292.00	20,292.00
	212 Dental Insurance		588.00	588.00
	215 Eye Care Insurance			
	216 Prescription Insurance			
	271 Self-Insurance Medical Benefits			
	272 Self-Insurance Dental Benefits			
	275 Self-Insurance Eye Care Benefits			
	276 Self-Insurance Prescription Benefits			
	FUND TOTAL		\$20,880.00	\$20,880.00
60 Internal Service Fund	No Self Insurance data to report			
	211 Medical Insurance			
	212 Dental Insurance			
	215 Eye Care Insurance			
	216 Prescription Insurance			
	271 Self-Insurance Medical Benefits			
	272 Self-Insurance Dental Benefits			
	275 Self-Insurance Eye Care Benefits			
	276 Self-Insurance Prescription Benefits			
	FUND TOTAL			
Total of All Funds		\$2,605,854.64	\$1,296,122.00	\$3,901,976.64

LEA : 116605003 Mifflinburg Area SD

Printed 11/22/2020 1:33:55 PM

Function	Special Education (Prior Year)	Nonspecial Education (Prior Year)	Total (Prior Year)	Special Education (Current Year)	Nonspecial Education (Current Year)	Total (Current Year)
2120 Guidance Services	233,237.00	349,856.00	583,093.00	253,091.87	379,637.81	632,729.68
2140 Psychological Services	70,853.20	47,441.00	118,294.20	114,151.04	76,100.69	190,251.73
2150 Speech Pathology and Audiology Services	42,064.00		42,064.00	42,778.31		42,778.31
2160 Social Work Services	183,642.03	3,748.00	187,390.03	176,045.40	3,592.76	179,638.16
2260 Instruction and Curriculum Development Services	239,462.00		239,462.00	226,758.45		226,758.45
2350 Legal and Accounting Services	3,036.00	16,822.00	19,858.00	3,062.95	17,643.90	20,706.85
2420 Medical Services						
2440 Nursing Services	45,097.76	254,848.00	299,945.76	45,690.51	263,196.38	308,886.89
2700 Student Transportation Services	273,513.00	1,501,312.00	1,774,825.00	247,247.06	1,563,357.26	1,810,604.32
Total	\$1,090,904.99	\$2,174,027.00	\$3,264,931.99	\$1,108,825.59	\$2,303,528.80	\$3,412,354.39

LEA : 116605003 Mifflinburg Area SD

Printed 11/22/2020 1:34:00 PM

(PRINCIPAL AMOUNTS ONLY)

GOVERNMENTAL FUNDS/ ACTIVITIES

	Short-Term Borrowing	General Obligation Bonds/Notes	Authority Building Obligations	Other Long-Term Debt	Other Post- Employment Benefits (OPEB)	Compensated Absences	Net Pension Liability	Total
1. Debt at Beginning of Fiscal Year		23,295,000.00			5,235,098.00	466,398.00	42,964,000.00	71,960,496.00
2. Additional Debt Incurred During Year		34,075,000.00			80,642.00	31,870.00		34,187,512.00
3. Retirements and Repayments		23,780,000.00					298,000.00	24,078,000.00
4. Debt at End of Fiscal Year		33,590,000.00			5,315,740.00	498,268.00	42,666,000.00	82,070,008.00
5. Accreted Interest at End Of Fiscal Year								
6. Total Debt and Accreted Interest		33,590,000.00			5,315,740.00	498,268.00	42,666,000.00	82,070,008.00
7. Current Portion P&I - Due within 1 year		800,000.00						800,000.00
8. Interest Paid during current fiscal year		859,550.96						859,550.96

(PRINCIPAL AMOUNTS ONLY)

PROPRIETARY FUNDS

- 1. Debt at Beginning of Fiscal Year
- 2. Additional Debt Incurred During Year
- 3. Retirements and Repayments
- 4. Debt at End of Fiscal Year
- 5. Accreted Interest at End Of Fiscal Year
- 6. Total Debt and Accreted Interest
- 7. Current Portion P&I - Due within 1 year
- 8. Interest Paid during current fiscal year

LEA : 116605003 Mifflinburg Area SD

Printed 11/22/2020 1:34:00 PM

Total Principal and Interest Payments Made by Your School - All Funds

Function	Fund		Principal (910)	Principal (920)	Interest (830)	Total (Principal +Interest)	Misc Other Uses (990)
5110	10	General Fund	920,000.00		607,586.96	1,527,586.96	
5110	20	Special Revenue Funds					
5110	30	Capital Projects Funds					
5110	40	Debt Service Fund					
5110	90	Permanent Fund					
5120	10	General Fund	22,860,000.00		251,964.00	23,111,964.00	
5120	20	Special Revenue Funds					
5120	30	Capital Projects Funds					
5120	40	Debt Service Fund					
Total Debt Payments - Governmental Funds			\$23,780,000.00		\$859,550.96	\$24,639,550.96	
Function	Fund		Principal (910)	Principal (920)	Interest (830)	Total (Principal +Interest)	
5110	50	Enterprise Fund					
5110	60	Internal Service Fund					
5120	50	Enterprise Fund					
5120	60	Internal Service Fund					
Total Debt Payments - Proprietary Funds							

LEA : 116605003 Mifflinburg Area SD

Printed 11/22/2020 1:34:00 PM

Debt Details
Governmental Funds/ Activities

Debt Category	Debt Issue Date (MM/YYYY)	Principal Amounts Only				Current Portion Due Within One Year (Principal and Interest)	Interest Paid During Fiscal Year
		Debt at Beginning of Fiscal Year	Additions	Reductions / Repayments	Debt at End of Fiscal Year		
General Obligation Bonds/Notes – CIB	03/2020		20,365,000.00	485,000.00	19,880,000.00	690,000.00	433,408.44
General Obligation Bonds/Notes – CIB	03/2020		13,710,000.00		13,710,000.00	110,000.00	
General Obligation Bonds/Notes – CIB	03/2015	9,535,000.00		9,535,000.00			131,753.13
General Obligation Bonds/Notes – CIB	11/2014	9,895,000.00		9,895,000.00			190,515.63
General Obligation Bonds/Notes – CIB	05/2012	3,865,000.00		3,865,000.00			103,873.76
Compensated Absences		466,398.00	31,870.00		498,268.00		
Other Post-Employment Benefits (OPEB)		5,235,098.00	80,642.00		5,315,740.00		
Net Pension Liability		42,964,000.00		298,000.00	42,666,000.00		
Totals for Debt Entered:		\$71,960,496.00	\$34,187,512.00	\$24,078,000.00	\$82,070,008.00	\$800,000.00	\$859,550.96

LEA : 116605003 Mifflinburg Area SD

Printed 11/22/2020 1:34:04 PM

General Fund (10)

Section 1: Tuition/Purchased Services as Reported within Expenditure Detail	Amount
Tuition Reported in General Fund Expenditures 1000-560	2,723,652.14
Purchased Services in General Fund Expenditures 1000-594 and 1000-597	3,653.72
Section 1 Total	\$2,727,305.86

Section 2: Tuition Paid to Institution Types During Fiscal Year	Tuition Paid For Nonspecial Education	Tuition Paid For Special Education	Total
1 1306 Institutions			
2 Institutionalized Children's Programs		3,653.72	3,653.72
3 Juveniles Incarcerated in Adult Facilities			
4 Residential Treatment Facilities	770.00	214,811.34	215,581.34
5 Other Local Education Agencies	42,997.76	113,386.65	156,384.41
6 Brick and Mortar Charter Schools			
7 Cyber Charter Schools	363,966.89	91,281.89	455,248.78
8 Career and Technology Centers	1,527,956.94		1,527,956.94
9 Approved Private Schools		368,480.67	368,480.67
10 PA Chartered Schools for the Deaf and Blind			
11 Private Residential Rehabilitative Institutions			
12 Juvenile Detention Centers			
13 Special Program Jointures			
14 Other Tuition Not Included Elsewhere In This Section			
Section 2 Total	\$1,935,691.59	\$791,614.27	\$2,727,305.86

1 .	<u>Student Transportation Services for Educational Field Trips</u>	13,508.62
2 .	<u>Student Transportation Services for Student Activities</u>	34,152.24
3 .	<u>Rental of Vehicles for Student Transportation Services</u>	
4 .	<u>Capital Reserve Funds</u>	

Include only district-owned transportation expenditures paid from State or local money.
DO NOT include federal expenditures or payments to contract service providers.
Contracted transportation services should not be recorded on this schedule.

LEA : 116605003 Mifflinburg Area SD

Printed 11/22/2020 1:34:10 PM

Food Service / Cafeteria Operations Fund (51)

3000 Operation of Non-Instructional Services		Total
100 <u>Personnel Services – Salaries</u>		
100 Personnel Services – Salaries		384,597.00
Total Personnel Services – Salaries		\$384,597.00
200 <u>Personnel Services – Employee Benefits</u>		
210 Group Insurance – Contracted Provider		20,956.00
220 Social Security Contributions		29,079.00
230 PSERS Retirement Contributions		123,414.00
250 Unemployment Compensation		1,640.00
260 Workers' Compensation		1,692.00
280 Other Post-Employment Benefits (OPEB)		(2,414.00)
Total Personnel Services – Employee Benefits		\$174,367.00
400 <u>Purchased Property Services</u>		
430 Repairs and Maintenance Services		423.00
Total Purchased Property Services		\$423.00
500 <u>Other Purchased Services</u>		
530 Communications		600.00
580 Travel		1,060.00
Total Other Purchased Services		\$1,660.00
600 <u>Supplies</u>		
610 General Supplies		23,134.00
620 Energy		2,553.00
630 Food		370,682.00
650 Supplies & Fees – Technology Related		6,843.00
Total Supplies		\$403,212.00
700 <u>Property</u>		
740 Depreciation		15,736.00
Total Property		\$15,736.00
800 <u>Other Objects</u>		
810 Dues and Fees		157.00
890 Miscellaneous Expenditures		15,890.00
Total Other Objects		\$16,047.00
Total 3000 Operation of Non-Instructional Services		\$996,042.00

LEA : 116605003 Mifflinburg Area SD

Printed 11/22/2020 1:34:10 PM

Food Service / Cafeteria Operations Fund (51)

3100 Food Services	Elementary	Secondary	Federal	Total
100 <u>Personnel Services – Salaries</u>				
100 Personnel Services – Salaries				384,597.00
Total Personnel Services – Salaries				\$384,597.00
200 <u>Personnel Services – Employee Benefits</u>				
210 Group Insurance – Contracted Provider				20,956.00
220 Social Security Contributions				29,079.00
230 PSERS Retirement Contributions				123,414.00
250 Unemployment Compensation				1,640.00
260 Workers' Compensation				1,692.00
280 Other Post-Employment Benefits (OPEB)				(2,414.00)
Total Personnel Services – Employee Benefits				\$174,367.00
400 <u>Purchased Property Services</u>				
430 Repairs and Maintenance Services				423.00
Total Purchased Property Services				\$423.00
500 <u>Other Purchased Services</u>				
530 Communications				600.00
580 Travel				1,060.00
Total Other Purchased Services				\$1,660.00
600 <u>Supplies</u>				
610 General Supplies				23,134.00
620 Energy				2,553.00
630 Food				370,682.00
650 Supplies & Fees – Technology Related				6,843.00
Total Supplies				\$403,212.00
700 <u>Property</u>				
740 Depreciation				15,736.00
Total Property				\$15,736.00
800 <u>Other Objects</u>				
810 Dues and Fees				157.00
890 Miscellaneous Expenditures				15,890.00
Total Other Objects				\$16,047.00
Total 3100 Food Services				\$996,042.00

	<u>Food Service(51)</u>	<u>Child Care Operations(52)</u>	<u>Other Enterprise(58)</u>	<u>Internal Service(60)</u>	<u>Total</u>
3000 <u>Operation of Non-Instructional Services</u>					
3100 Food Services	996,042.00				996,042.00
Total Operation of Non-Instructional Services	\$996,042.00				\$996,042.00
TOTAL ACTUAL EXPENDITURES & OTHER FINANCING USES	\$996,042.00				\$996,042.00

LEA : 116605003 Mifflinburg Area SD

Printed 11/22/2020 1:34:24 PM

Fund	School	School Number	Local Personnel	Local Nonpersonnel	State Personnel	State Nonpersonnel	Federal Personnel	Federal Nonpersonnel	Total	Explanation
10										
	Mifflinburg Area Intrmd Sch	7863	3,956,274.93	289,541.30			352,015.67	3,780.93	4,601,612.83	
	Mifflinburg Area MS	6809	4,325,779.14	416,517.27			65,353.33		4,807,649.74	
	Mifflinburg Area SHS	4091	5,522,235.29	436,317.06			88,070.01		6,046,622.36	
	Mifflinburg El Sch	6360	3,684,559.36	259,294.20	354,755.01		592,582.15	1,644.34	4,892,835.06	
Total			17,488,848.72	1,401,669.83	354,755.01		1,098,021.16	5,425.27	20,348,719.99	