

LEA Name : Mifflinburg Area SD
Address : 178 Maple St
Mifflinburg, PA 17844

County : Union
AUN Number : 116605003
LEA Type : SD

Annual Financial Report
Accuracy Certification Statement
For Fiscal Year Ending
6/30/2021

Pennsylvania Department of Education
&

Office of Comptroller Operations

PDE-2056: Intermediate Unit

PDE-2057: School District, AVTS/CTC, Charter School,
and Special Program Jointure

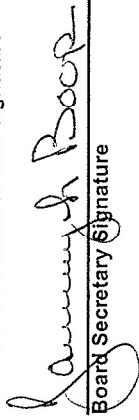
CERTIFICATION: By signing this page I agree that the electronic data submitted is a complete and accurate statement of the financial operations and status of the local education agency for the fiscal year. It has been prepared in accordance with generally accepted accounting principles and established Commonwealth of PA reporting guidelines.



Chief School Administrator Signature

Date

12/2/21



Board Secretary Signature

Date

12-02-21

THOMAS R CARUSO

(570)966-8200

Ext :8207

Contact Person

Contact Person Telephone Number

tcarus@mmifflinburg.org

(570)966-8210

Contact Person E-mail Address

Contact Person Fax Number

Audit Certification

Annual Financial Report:

For Fiscal Year Ending 6/30/2021

(Pursuant to PA School Code Section 218(b))


LEA Name : Mifflinburg Area SD
AUN Number : 116605003
County : Union

Audit Certification Due:
12/31/2021

This certification is applicable to the Annual Financial Report data submitted through the Consolidated Financial Reporting System (CFRS).

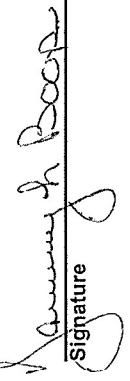
CERTIFICATION: By signing this page I agree that the financial statements of the school have been properly audited as noted above pursuant to Article XXIV, and in the auditor's professional opinion, the Annual Financial Report (PDE-2057) submitted through CFRS is materially consistent with the audited financial statements.

Chief School Administrator


Signature

12/21/21
Date

Board Secretary


Signature

12-02-21
Date

THOMAS R CARUSO

Contact Person

tcaruso@mifflinburg.org

Contact Person E-mail Address

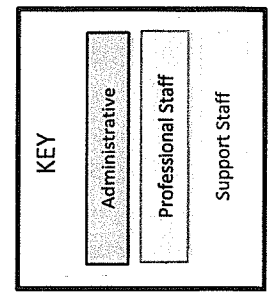
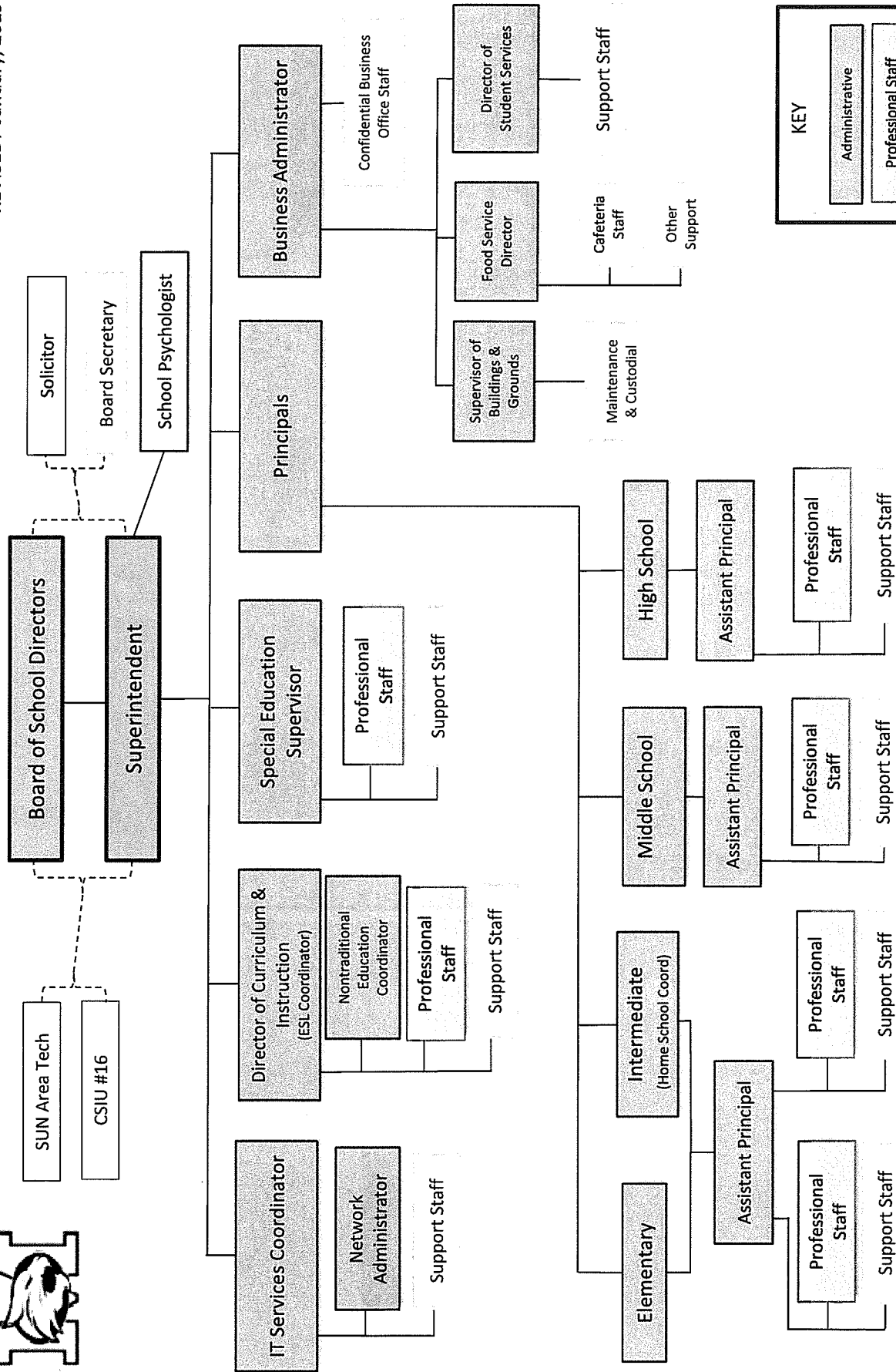
(570)966-8200

Contact Person Telephone Number

(570)966-8210

Contact Person Fax Number

Ext :8207





Book	Policy Manual
Section	600 Finances
Title	GASB Statement 34
Code	622
Status	Active
Adopted	May 8, 2001

Purpose

The Board recognizes the need to implement the required accounting and financial reporting standards stipulated by the PA Department of Education.

The primary objectives of implementing the GASB Statement 34 are to assure compliance with state requirements, and properly account for both the financial and economic resources of the district.

Authority

Participation of the school district in any such activity shall be in accordance with Board policy.

Delegation of Responsibility

The responsibility to coordinate the compilation and preparation of all information necessary to implement this policy is delegated to the Business Administrator.

The Business Administrator shall be responsible for the implementing of the necessary procedures to establish and maintain a fixed asset inventory, including depreciation schedules. Depreciation shall be computed on a straight-line basis over the useful lives of the assets, using an averaging convention. Normal maintenance and repairs shall be charged to expense as incurred; major renewals and betterments that materially extend the life or increase the value of the asset shall be capitalized (according to #4 Guidelines). A schedule of accumulated depreciation shall be consistent from year to year. The basis for depreciation, including groups of assets and useful lives, shall be in writing and submitted for review to the independent auditors.

The Superintendent and Business Administrator shall prepare the required Management Discussion and Analysis (MD&A) in accordance with GASB No. 52 "Required Supplementary Information." The MD&A shall be in the form required by GASB Statement 34 and shall be submitted to the Board for approval, prior to publication.

Guidelines

In order to associate debt with acquired assets, and to avoid net asset deficit, any asset that has been acquired with debt proceeds shall be capitalized, regardless of the cost of the asset. The asset life of these assets shall be considered relative to the time of the respective debt amortizations.

For all other assets not acquired by debt proceeds, the dollar value of any single item for inclusion in the fixed assets accounts shall be not less than \$1,500 and have an estimated useful life of one year or more.

In addition to the above criteria, the item should (1) retain its original shape, appearance and character with use; (2) not lose its identity through incorporation or fabrication into a different or more complex unit or substance; and (3) be more feasible to repair rather than replace when a failure occurs.

The capitalization threshold shall be set at a level that will capture at least 80% of all fixed assets.

The assets listed below do not normally individually meet capitalization threshold criteria:

1. Library books.
2. Classroom texts.
3. Computer equipment.
4. Classroom furniture.

These asset category costs shall be capitalized and depreciated as groups when that group's acquisition cost exceeds the capitalization threshold in any given fiscal year.

For group asset depreciation purposes, the estimated useful life of the group may be based on the weighted average or simple average of the useful life of individual items, or on an assessment of the life of the group as a whole. Periodically, the district shall review the estimated life of groups of assets and adjust the remaining depreciation life of the group.

Assets that fall below the capitalization threshold for GASB 34 reporting purposes may still be significant for insurance, warranty service, and obsolescence/ replacement policy tracking purposes. The district may record and maintain these non-GASB 34 asset inventories in subsidiary ledgers.

<u>Val Number</u>	<u>Description</u>	<u>Justification</u>
12195	REG: Current Year AFR Beginning Fund Balance must equal Prior Year AFR Ending Fund Balance. Justifications to this error must fully explain the situation that prompted a fund balance restatement. "Auditor Adjustment" is not a sufficient justification. Total Govt Funds, Beg Bal: \$19,644,207.00 PY Ending Bal, Govt Funds: \$19,165,480.00	Adoption and implementation of GASB 84 increased Govt funds by \$478k
30160	Federal IDEA revenue has been reported in revenue code 8512 or 8513 rather than in code 6832 as pass thru funds. Please make corrections or provide an explanation. Receipt of IDEA funded COVID 19 SECIM grants correctly recorded to 8512 can be noted in the justification. REV8512: \$7,312.87 REV8513: \$0.00	These funds were COVID 19 SECIM grant funds
30685	Revenue Detail: Current Tax Revenue amount cannot exceed 50% variance from prior year amount. Correct the data or enter a justification. 6153, Current AFR Rev Detail: \$355,360.64 6153, Prior AFR Rev Detail: \$221,238.83	These are funds for Realty Transfer Tax received from the County. The variance is a direct result of actual property transfer transactions that occurred during the 2020-21 year.

Amounts Expressed in Whole Dollars					
Assets And Deferred Outflows Of Resources					
Assets					
0100	Cash and Cash Equivalents	10,596,986	371,066		
0110	Investments	1,500,465	129,662		
0120	Taxes Receivable	715,728			
0130	Due From Other Funds				
0141	Due From Other Governments	1,304,506			
0142	State Revenue Receivable				
0143	Federal Revenue Receivable				
0145	Other Intergovernmental Revenue Receivable				
0146	Due from Primary Government				
0147	Due from Component Unit				
0150	Other Receivables	249,436			
0170	Inventories	40,000			
0180	Prepaid Expenses (Expenditures)				
0190	Other Current Assets				
Total Assets		\$14,407,121	\$500,728		
0910	Deferred Outflows of Resources				
Total Assets And Deferred Outflows Of Resources		\$14,407,121	\$500,728		

Amounts Expressed in Whole Dollars		Capital Reserve (690. <u>1850</u> (31)	Capital Reserve (1431) <u>(32)</u>	Other Capital Projects <u>Fund</u> (39)	Debt Service <u>(40)</u>	Permanent <u>(90)</u>
Assets And Deferred Outflows Of Resources						
Assets						
0100	Cash and Cash Equivalents					1,087,774
0110	Investments					
0120	Taxes Receivable					
0130	Due From Other Funds					
0141	Due From Other Governments					
0142	State Revenue Receivable					
0143	Federal Revenue Receivable					
0145	Other Intergovernmental Revenue Receivable					
0146	Due from Primary Government					
0147	Due from Component Unit					
0150	Other Receivables					
0170	Inventories					
0180	Prepaid Expenses (Expenditures)					
0190	Other Current Assets					
Total Assets			\$1,087,774			
0910	Deferred Outflows of Resources					
Total Assets And Deferred Outflows Of Resources			\$1,087,774			

Amounts Expressed in Whole Dollars		<u>Total Governmental Funds</u>
Assets And Deferred Outflows Of Resources		
Assets		
0100	Cash and Cash Equivalents	12,055,826
0110	Investments	1,630,127
0120	Taxes Receivable	715,728
0130	Due From Other Funds	
0141	Due From Other Governments	1,304,506
0142	State Revenue Receivable	
0143	Federal Revenue Receivable	
0145	Other Intergovernmental Revenue Receivable	
0146	Due from Primary Government	
0147	Due from Component Unit	
0150	Other Receivables	249,436
0170	Inventories	40,000
0180	Prepaid Expenses (Expenditures)	
0190	Other Current Assets	
Total Assets		\$15,995,623
0910	Deferred Outflows of Resources	
Total Assets And Deferred Outflows Of Resources		\$15,995,623

Amounts Expressed in Whole Dollars					
Liabilities And Deferred Inflows Of Resources And Fund Balances					
Liabilities					
0400	Due to Other Funds				
0411	Due to Other Governments				
0412	Due to Primary Government				
0413	Due to Component Unit				
0420	Accounts Payable	1,757,059	1,332		
0430	Contracts Payable				
0440	Current Portion of Long-Term Debt				
0450	Short-Term Payables				
0461	Accrued Salaries and Benefits	2,196,267			
0462	Payroll Deductions and Withholding	79,209			
0480	Unearned Revenues				
0490	Other Current Liabilities				
Total Liabilities		\$4,032,535	\$1,332		
Fund Balances					
0950	Deferred Inflows of Resources	534,913			
0810	Nonspendable Fund Balance	40,000			
0820	Restricted Fund Balance		499,396		
0830	Committed Fund Balance	6,550,000			
0840	Assigned Fund Balance				
0850	Unassigned Fund Balance	3,249,673			
Total Fund Balances		\$9,839,673	\$499,396		
Total Liabilities, Deferred Inflows Of Resources And Fund Balances		\$14,407,121	\$500,728		

Amounts Expressed in Whole Dollars					
		<u>Capital Reserve (690.</u>	<u>Capital Reserve (1431)</u>	<u>Other Capital Projects</u>	<u>Debt Service</u>
		<u>1850)</u>	<u>(32)</u>	<u>Fund</u>	<u>(40)</u>
		(31)		(39)	
Liabilities And Deferred Inflows Of Resources And Fund Balances					
Liabilities					
0400 Due to Other Funds					
0411 Due to Other Governments					
0412 Due to Primary Government					
0413 Due to Component Unit					
0420 Accounts Payable			50,395		
0430 Contracts Payable					
0440 Current Portion of Long-Term Debt					
0450 Short-Term Payables					
0461 Accrued Salaries and Benefits					
0462 Payroll Deductions and Withholding					
0480 Unearned Revenues					
0490 Other Current Liabilities					
Total Liabilities			\$50,395		
0950 Deferred Inflows of Resources					
Fund Balances					
0810 Nonspendable Fund Balance					
0820 Restricted Fund Balance					
0830 Committed Fund Balance			1,037,379		
0840 Assigned Fund Balance					
0850 Unassigned Fund Balance					
Total Fund Balances			\$1,037,379		
Total Liabilities, Deferred Inflows Of Resources And Fund Balances			\$1,087,774		

Amounts Expressed in Whole Dollars		<u>Total Governmental</u> <u>Funds</u>
Liabilities And Deferred Inflows Of Resources And Fund Balances		
Liabilities		
0400	Due to Other Funds	
0411	Due to Other Governments	
0412	Due to Primary Government	
0413	Due to Component Unit	
0420	Accounts Payable	1,808,786
0430	Contracts Payable	
0440	Current Portion of Long-Term Debt	
0450	Short-Term Payables	
0461	Accrued Salaries and Benefits	2,196,267
0462	Payroll Deductions and Withholding	79,209
0480	Unearned Revenues	
0490	Other Current Liabilities	
Total Liabilities		\$4,084,262
Fund Balances		
0950	Deferred Inflows of Resources	534,913
0810	Nonspendable Fund Balance	40,000
0820	Restricted Fund Balance	499,396
0830	Committed Fund Balance	7,587,379
0840	Assigned Fund Balance	
0850	Unassigned Fund Balance	3,249,673
Total Fund Balances		\$11,376,448
Total Liabilities, Deferred Inflows Of Resources And Fund Balances		\$15,995,623

	Amounts Expressed in Whole Dollars				
		<u>General Fund</u>	<u>Student Sponsored</u>	<u>Public Purpose Trust</u>	<u>Other Compt Approved</u>
		(10)	Activity Fund	(27)	(28)
			(21)		
Revenues					<u>Athletic / Activity</u>
					(29)
6000 Revenue from Local Sources	18,262,258		161,296		
7000 Revenue from State Sources	16,056,613				
8000 Revenue from Federal Sources	1,224,549				
Total Revenues	\$35,543,420		\$161,296		
Expenditures					
1000 Instruction	20,896,168				
2000 Support Services	11,101,586				
3000 Operation of Non-Instructional Services	505,696		140,628		
4000 Facilities Acquisition, Construction and Improvement Services	302,500				
5110 Debt Service	1,787,575				
5130 Refund of Prior Year Revenues / Receipts					
Total Expenditures	\$34,593,525		\$140,628		
Excess (Deficiency) Of Revenues Over Expenditures	\$949,895		\$20,668		
Other Financing Sources (Uses)					
9110 Face Value of Bonds Issued					
9120 Proceeds from Refunding of Bonds					
9130 Bond Premiums					
9200 Proceeds from Extended-Term Financing					
9300 Interfund Transfers - IN	115,246				
9400 Sale of or Compensation for Loss of Fixed Assets					
9710 Transfers from Component Units					
9720 Transfers from Primary Governments					
9910 Other Financing Sources Not Listed in the 9000 Series					
9990 Insurance Recoveries	5,904				
5120 Debt Service – Refunded Bonds					
5150 Bond Discounts					
5200 Interfund Transfers – Out	462,622				
5300 Transfers Out to Component Units/Primary Governments					
Total Other Financing Sources (Uses)	(\$341,472)				

Amounts Expressed in Whole Dollars		<u>Capital Reserve (690,1850)</u> (31)	<u>Capital Reserve (1431,32)</u> (32)	<u>Other Capital Projects Fund (39)</u> (39)	<u>Debt Service (40)</u> (40)	<u>Permanent (90)</u> (90)
Revenues						
6000	Revenue from Local Sources		187			1,917
7000	Revenue from State Sources					
8000	Revenue from Federal Sources					
Total Revenues			\$187			\$1,917
Expenditures						
1000	Instruction					
2000	Support Services		50,310			
3000	Operation of Non-Instructional Services					
4000	Facilities Acquisition, Construction and Improvement Services		434,834			8,613,811
5110	Debt Service					
5130	Refund of Prior Year Revenues / Receipts					
Total Expenditures			\$485,144			\$8,613,811
Excess (Deficiency) Of Revenues Over Expenditures			(\$484,957)			(\$8,611,894)
Other Financing Sources (Uses)						
9110	Face Value of Bonds Issued					
9120	Proceeds from Refunding of Bonds					
9130	Bond Premiums					
9200	Proceeds from Extended-Term Financing					
9300	Interfund Transfers - IN		315,246			
9400	Sale of or Compensation for Loss of Fixed Assets					
9710	Transfers from Component Units					
9720	Transfers from Primary Governments					
9910	Other Financing Sources Not Listed in the 9000 Series					
9990	Insurance Recoveries					
5120	Debt Service – Refunded Bonds					
5150	Bond Discounts					
5200	Interfund Transfers – Out			115,246		
5300	Transfers Out to Component Units/Primary Governments					
Total Other Financing Sources (Uses)			\$315,246			(\$115,246)

Amounts Expressed in Whole Dollars		<u>Total Governmental</u> <u>Funds</u>
Revenues		
6000 Revenue from Local Sources		18,425,658
7000 Revenue from State Sources		16,056,613
8000 Revenue from Federal Sources		1,224,549
Total Revenues		\$35,706,820
Expenditures		
1000 Instruction		20,896,168
2000 Support Services		11,151,896
3000 Operation of Non-Instructional Services		646,324
4000 Facilities Acquisition, Construction and Improvement Services		9,351,145
5110 Debt Service		1,787,575
5130 Refund of Prior Year Revenues / Receipts		
Total Expenditures		\$43,833,108
Excess (Deficiency) Of Revenues Over Expenditures		(\$8,126,288)
Other Financing Sources (Uses)		
9110 Face Value of Bonds Issued		
9120 Proceeds from Refunding of Bonds		
9130 Bond Premiums		
9200 Proceeds from Extended-Term Financing		
9300 Interfund Transfers - IN		430,492
9400 Sale of or Compensation for Loss of Fixed Assets		
9710 Transfers from Component Units		
9720 Transfers from Primary Governments		
9910 Other Financing Sources Not Listed in the 9000 Series		
9990 Insurance Recoveries		5,904
5120 Debt Service – Refunded Bonds		
5150 Bond Discounts		
5200 Interfund Transfers – Out		577,868
5300 Transfers Out to Component Units/Primary Governments		
Total Other Financing Sources (Uses)		(\$141,472)

	Amounts Expressed in Whole Dollars		<u>General Fund</u> (10)	<u>Student Sponsored</u> <u>Activity Fund</u> (21)	<u>Public Purpose Trust</u> (27)	<u>Other Compt Approved</u> (28)	<u>Athletic / Activity</u> (29)
Special And Extraordinary Items							
9920	Special Items – Gains						
9930	Extraordinary Items – Gains						
5520	Special Items – Losses						
5530	Extraordinary Items – Losses						
Net Change In Fund Balances			\$608,423	\$20,668			
Fund Balance							
0001	Fund Balance - Beginning of Fiscal Year		9,231,250	478,728			
Fund Balance - End Of Year			\$9,839,673	\$499,396			

Amounts Expressed in Whole Dollars						
Special And Extraordinary Items		Capital Reserve (690,1850)	Capital Reserve (1431,32)	Other Capital Projects Fund (39)	Debt Service (40)	Permanent (90)
	9920	Special Items – Gains				
	9930	Extraordinary Items – Gains				
	5520	Special Items – Losses				
	5530	Extraordinary Items – Losses				
Net Change In Fund Balances			(\$169,711)	(\$8,727,140)		
Fund Balance						
0001	Fund Balance - Beginning of Fiscal Year		1,207,089	8,727,140		
Fund Balance - End Of Year			\$1,037,378			

Amounts Expressed in Whole Dollars		<u>Total Governmental Funds</u>
Special And Extraordinary Items		
9920	Special Items – Gains	
9930	Extraordinary Items – Gains	
5520	Special Items – Losses	
5530	Extraordinary Items – Losses	
Net Change In Fund Balances		(\$8,267,760)
Fund Balance		
0001	Fund Balance - Beginning of Fiscal Year	19,644,207
Fund Balance - End Of Year		\$11,376,447

Amounts Expressed in Whole Dollars					
			<u>Food Service</u>	<u>Child Care</u>	<u>Other Enterprise</u>
			<u>(51)</u>	<u>Operations</u>	<u>(58)</u>
				<u>(52)</u>	
Assets And Deferred Outflows Of Resources					<u>TOTAL</u>
					<u>Internal Service</u>
					<u>(60)</u>
Current Assets					
0100	Cash and Cash Equivalents		34,206		34,206
0110	Investments				
0130	Due From Other Funds				
0141	Due From Other Governments		36,599		36,599
0142	State Revenue Receivable				
0143	Federal Revenue Receivable				
0146	Due from Primary Government				
0147	Due from Component Unit				
0150	Other Receivables		1,347		1,347
0170	Inventories		62,033		62,033
0180	Prepaid Expenses (Expenditures)				
0190	Other Current Assets				
Total Current Assets			\$134,185		\$134,185
Noncurrent Assets					
0211	Land				
0212	Site Improvements (Net)				
0220	Buildings and Building Improvements (Net)				
0230	Machinery, Equipment and Furniture (Net)		32,752		32,752
0250	Construction in Progress				
0260	Long Term Prepayments				
0290	Other Noncurrent Assets				
Total Noncurrent Assets			\$32,752		\$32,752
0910	Deferred Outflows of Resources				
Total Assets And Deferred Outflows Of Resources			\$166,937		\$166,937

Amounts Expressed in Whole Dollars					
		<u>Food Service</u>	<u>Child Care</u>	<u>Other Enterprise</u>	<u>TOTAL</u>
		(51)	(52)	(58)	
					<u>Internal Service</u>
					(60)
Liabilities And Deferred Inflows Of Resources And Net Position					
Current Liabilities					
0400	Due to Other Funds				
0411	Due to Other Governments				
0413	Due to Component Unit				
0420	Accounts Payable	76,713			76,713
0430	Contracts Payable				
0440	Current Portion of Long-Term Debt				
0450	Short-Term Payables				
0461	Accrued Salaries and Benefits				
0462	Payroll Deductions and Withholding				
0480	Unearned Revenues	34,586			34,586
0490	Other Current Liabilities				
Total Current Liabilities		\$111,299			\$111,299
Noncurrent Liabilities					
0510	Bonds Payable				
0520	Extended-Term Financing Agreements Payable				
0530	Lease-Purchase Obligations				
0540	Accumulated Compensated Absences				
0550	Authority Lease Obligations				
0560	Other Post-Employment Benefits (OPEB)				
0570	Net Pension Liability				
0599	Other Noncurrent Liabilities				
Total Noncurrent Liabilities					
Total Liabilities		\$111,299			\$111,299
Net Position					
0950	Deferred Inflows of Resources				
0791	Net Investment in Capital Assets	32,752			32,752
0008	Restricted Net Position (0792 – 0798)				
0799	Unrestricted Net Position	22,886			22,886
Total Net Position		\$55,638			\$55,638
Total Liabilities And Deferred Inflows Of Resources And Net Position		\$166,937			\$166,937

Amounts Expressed in Whole Dollars				
	Food Service (51)	Child Care Operations (52)	Other Enterprise (58)	TOTAL Internal Service (60)
Operating Revenues				
6600 Food Service Revenue	27,095			27,095
0071 Charges for Services				
0072 Other Operating Revenue				
Total Operating Revenues \$27,095 \$27,095				
Operating Expenses				
100 Personnel Services – Salaries	365,440			365,440
200 Personnel Services – Employee Benefits	175,499			175,499
300 Purchased Professional and Technical Services	20			20
400 Purchased Property Services	109			109
500 Other Purchased Services	791			791
600 Supplies	372,544			372,544
740 Depreciation	15,736			15,736
810 Dues and Fees				
880 Refunds of Prior Years' Receipts				
890 Miscellaneous Expenditures	1,890			1,890
Total Operating Expenses \$932,029 \$932,029				
Operating Income (Loss) (\$904,934) (\$904,934)				
Non Operating Revenues (Expenses)				
6500 Earnings on Investments	21			21
6920 Contributions and Donations from Private Sources				
6930 Gains or Losses on Sale of Fixed Assets				
6991 Refunds of a Prior Year Expenditure				
7000 Revenue from State Sources	120,384			120,384
8000 Revenue from Federal Sources	705,986			705,986
9990 Insurance Recoveries				
820 Claims and Judgments Against the LEA				
830 Interest				
TOTAL Non Operating Revenues (Expenses) \$826,391 \$826,391				
Income (Loss) Before Contributions And Transfers (\$78,543) (\$78,543)				

Amounts Expressed in Whole Dollars				
Contributions, Transfers, and Special and Extraordinary Items				
5200	Interfund Transfers – Out			
5300	Transfers Out to Component Units/Primary Governments			
5520	Special Items – Losses			
5530	Extraordinary Items – Losses			
9300	Interfund Transfers - IN	147,376		147,376
9500	Capital Contributions			
9700	Transfers IN From Component Units/Primary Governments			
9920	Special Items – Gains			
9930	Extraordinary Items – Gains			
Change In Net Position		\$68,833		\$68,833
0002	Net Position - Beginning of Fiscal Year	(13,196)		(13,196)
0003	Accounting Changes / Residual Equity Transfers			
Net Position - End Of Year		\$55,637		\$55,637

Food Service (51)

Child Care Operations (52)

Other Enterprise (58)

TOTAL

Internal Service (60)

Amounts Expressed in Whole Dollars				
	<u>Food Service</u> <u>(51)</u>	<u>Child Care Operations</u> <u>(52)</u>	<u>Other Enterprise</u> <u>(58)</u>	<u>TOTAL</u> <u>Internal Service(60)</u>
Cash Flows From Operating Activities				
0011 Cash Receipts From Users	27,704			27,704
0012 Cash Receipts From Assessments Made to Other Funds				
0013 Cash Receipts From Earnings on Investments				
0014 Cash Receipts From Other Operating Revenue				
0015 Cash Payments To Employees For Services	540,938			540,938
0016 Cash Payments For Insurance Claims				
0017 Cash Payments To Suppliers For Goods and Services	406,346			406,346
0018 Cash Payments For Other Operating Expenses	38,489			38,489
Net Cash Provided By (Used For) Operating Activities	(\$958,069)			(\$958,069)
Cash Flows From Non-Capital Financing Activities				
0021 Receipts From Local Sources - 6000				
0022 Receipts From State Sources - 7000	120,384			120,384
0023 Receipts From Federal Sources -8000	705,986			705,986
0024 Notes and Loans Received (Repaid)				
0025 Interest Paid on Notes/Loans - 5100-830				
0026 Operating Transfers In (Out)/Residual Equity Trans				
0027 Operating Transfers In (Out) Primary Government / Comp Unit	147,376			147,376
0028 Receipts From Refund of Prior Year Expenditures - 6991				
0029 Special and Extraordinary Gains (losses)				
0030 Receipts from Insurance Recoveries -9990				
Net Cash Prov By (Used for) Non-Capital Financing Activities	\$973,746			\$973,746
Cash Flows From Capital and Related Financing Activities				
0031 Payments For Fac Acq, Const, and Imp - 4000				
0032 Gain / (Loss) on Sale of Fixed Assets - 6930				
0033 Proceeds From Extended Term Financing - 9200				
0034 Principal Paid on Financing Agreements				
0035 Interest Paid on Financing Agreements - 5100-830				
0036 (Inc) Dec in Contributed Capital				
Net Cash Prov By (Used for) Capital and Related Financing Activities				

Cash Flows From Investing Activities

0041 Earnings on Investments - 6500	21
0042 Purchase of Inv Securities / Deposits to Inv Pools	
0043 Receipts From Investment Pool Withdrawals	
0044 Proceeds from Sale and Maturity of Inv Securities	

LEA : 116605003 Mifflinburg Area SD

Printed 12/2/2021 3:42:08 PM

0045 Loans Received (Paid)

Net Cash Prov By (Used for) Investing Activities

\$21

\$21

	<u>Food Service</u> (51)	<u>Child Care Operations</u> (52)	<u>Other Enterprise</u> (58)	<u>TOTAL</u>	<u>Internal Service</u> (60)
Net Increase (Decrease) in Cash Flows	15,698			15,698	
0004 Cash and Cash Equivalents Beginning of Year	18,508			18,508	
Cash and Cash Equivalents at Year End	\$34,206			\$34,206	
<hr/>					
Reconciliation of Operating Income (Loss) To Net Cash Provided by (Used For) Operating Activities					
0005 Operating Income (Loss) per REP	(904,934)			(904,934)	
Adjustments					
0051 Depreciation and Net Amortization					
0052 Provision for Uncollectible Accounts	15,736			15,736	
0053 Other Adjustments					
Effect of Changes in Assets, Liabilities, Deferred Outflows and Deferred Inflows					
0054 (Inc) Dec In Accounts Receivable (0120-0150)	(36,722)			(36,722)	
0055 Advances to Other Funds (0160)					
0056 (Inc) Dec in Inventories (0170)	(13,940)			(13,940)	
0057 (Inc) Dec in Prepaid Expenses (0180)					
0058 (Inc) Dec in Other Current or Noncurrent Assets					
0064 Deferred Outflows (0910)					
0059 Inc (Dec) in Accounts Payable (0400-0450)	(18,942)			(18,942)	
0060 Inc (Dec) in Accrued Salaries/Benefits (0461)					
0065 Inc (Dec) in Net Pension Liabilities (0570)					
0066 Inc (Dec) in Other Postemp Benefit Oblig (0560)					
0061 Inc (Dec) in Payroll Deductions/Withholding (0462)					
0062 Inc (Dec) in Unearned Revenue (0480)	732			732	
0063 Inc (Dec) in Other Current or Noncurrent Liabilities					
0067 Deferred Inflows (0950)					
Total Adjustments	(\$53,136)			(\$53,136)	
Cash Provided By (Used for) Total	(\$958,070)			(\$958,070)	

COMBINED STATEMENT OF CASH FLOWS

SCHEDULE OF NONCASH INVESTING, CAPITAL, AND FINANCING ACTIVITIES

Explanation of Transaction and Balance Sheet Effect	Amount
Total	

	Revenue Reported		Current Year	Prior Year	Taxes Collected
	In Current Year	Tax Accrual			In Current Year
Revenue from Local Sources					
6111 Current Real Estate Taxes	11,166,591.67				11,166,591.67
6113 Public Utility Realty Taxes	15,636.29				15,636.29
6114 Payments in Lieu of Current Taxes - State / Local	114,651.51				114,651.51
6120 Current Per Capita Taxes, Section 679	32,704.64				32,704.64
6141 Current Act 511 Per Capita Taxes	61,373.24				61,373.24
6151 Current Act 511 Earned Income Taxes	5,174,048.17				5,174,048.17
6153 Current Act 511 Real Estate Transfer Taxes	355,360.64				355,360.64
6411 Delinquent Real Estate Taxes	579,650.60				579,650.60
6420 Delinquent Per Capita Taxes, Section 679	9,287.04				9,287.04
6440 Delinquent Local Enabling Taxes - Flat Rate Assessments	15,446.19				15,446.19
6500 Earnings on Investments	39,430.32				
6700 Revenues from LEA Activities	16,893.58				
6831 Federal Revenue Received from Other Pennsylvania Public LEAs	5,000.00				
6832 Federal IDEA Revenue Received as Pass Through	350,521.56				
6910 Rentals	14,057.38				
6920 Contributions and Donations from Private Sources	54,449.86				
6991 Refunds of a Prior Year Expenditure	21,042.65				
6992 Energy Efficiency Revenues and Incentives	105,187.55				
6999 Other Revenues Not Specified Above	130,925.11				
TOTAL Revenue from Local Sources	\$18,262,258.00				\$17,524,749.99

Revenue from State Sources

Revenue Reported
In Current Year

7111 Basic Education Funding-Formula	8,092,105.13		
7112 Basic Education Funding-Social Security	583,066.60		
7160 Tuition for Orphans Subsidy	45,581.24		
7220 Vocational Education	82,493.29		
7271 Special Education funds for School-Aged Pupils	1,418,773.41		
7311 Pupil Transportation Subsidy	1,037,164.06		
7312 Nonpublic and Charter School Pupil Transportation Subsidy	26,565.00		
7320 Rental and Sinking Fund Payments / Building Reimbursement Subsidy	835,676.68		
7330 Health Services (Medical, Dental, Nurse, Act 25)	36,215.72		
7340 State Property Tax Reduction Allocation	573,517.45		
7361 School Safety and Security Grants	493,775.91		
7369 Other Safe School Grants	23,735.00		
7505 Ready to Learn Block Grant	354,755.00		
7506 Pasmart Grants	23,333.36		
7509 Supplemental Equipment Grants	10,366.62		
7820 State Share of Retirement Contributions	2,419,488.06		
TOTAL Revenue from State Sources	\$16,056,612.53		

Revenue Reported
In Current Year

Revenue from Federal Sources

8512	IDEA, Part B	7,312.87			
8514	NCLB, Title I - Improving the Academic Achievement of the Disadvantaged	540,710.00			
8515	NCLB, Title II - Preparing, Training and Recruiting High Quality Teachers and Principals	91,318.00			
8517	NCLB, Title IV - 21st Century Schools	34,968.00			
8741	Elementary and Secondary School Emergency Relief Fund (ESSER)	320,871.91			
8742	Governor's Emergency Education Relief Fund (GEER)	25,900.00			
8749	Other CARES Act Funding	201,404.00			
8820	Medical Assistance Reimbursement for Administrative Claiming (Quarterly) Program	2,064.67			
TOTAL Revenue from Federal Sources		\$1,224,549.45			

Revenue Reported
In Current Year

Other Financing Sources

9330 Capital Projects Fund Transfers	115,246.00			
9990 Insurance Recoveries	5,904.20			
TOTAL Other Financing Sources	\$121,150.20			
TOTAL FROM ALL SOURCES	\$35,664,570.18			\$17,524,749.99

	<u>General Fund (10)</u>	<u>Student Sponsored Activity Fund (21)</u>	<u>Public Purpose Trust (27)</u>	<u>Other Compt. Approved (28)</u>	<u>Athletic / Activity (29)</u>	<u>Capital Reserve (590, 1850) (31)</u>
6000 Revenue from Local Sources						
6111 Current Real Estate Taxes	11,166,591.67					
6113 Public Utility Realty Taxes	15,636.29					
6114 Payments in Lieu of Current Taxes - State / Local	114,651.51					
6120 Current Per Capita Taxes, Section 679	32,704.64					
6141 Current Act 511 Per Capita Taxes	61,373.24					
6151 Current Act 511 Earned Income Taxes	5,174,048.17					
6153 Current Act 511 Real Estate Transfer Taxes	355,360.64					
6411 Delinquent Real Estate Taxes	579,650.60					
6420 Delinquent Per Capita Taxes, Section 679	9,287.04					
6440 Delinquent Local Enabling Taxes - Flat Rate Assessments	15,446.19					
6500 Earnings on Investments	39,430.32					
6700 Revenues from LEA Activities	16,893.58					
6831 Federal Revenue Received from Other Pennsylvania Public LEAs	5,000.00					
6832 Federal IDEA Revenue Received as Pass Through	350,521.56					
6910 Rentals	14,057.38					
6920 Contributions and Donations from Private Sources	54,449.86					
6991 Refunds of a Prior Year Expenditure	21,042.65					
6992 Energy Efficiency Revenues and Incentives	105,187.55					
6999 Other Revenues Not Specified Above	130,925.11	161,296.00				
6000 Total Revenue from Local Sources	\$18,262,258.00	\$161,296.00				
7000 Revenue from State Sources						
7111 Basic Education Funding-Formula	8,092,105.13					
7112 Basic Education Funding-Social Security	583,066.60					
7160 Tuition for Orphans Subsidy	45,581.24					
7220 Vocational Education	82,493.29					
7271 Special Education funds for School-Aged Pupils	1,418,773.41					
7311 Pupil Transportation Subsidy	1,037,164.06					
7312 Nonpublic and Charter School Pupil Transportation Subsidy	26,565.00					
7320 Rental and Sinking Fund Payments / Building Reimbursement Subsidy	835,676.68					
7330 Health Services (Medical, Dental, Nurse, Act 25)	36,215.72					
7340 State Property Tax Reduction Allocation	573,517.45					
7361 School Safety and Security Grants	493,775.91					
7369 Other Safe School Grants	23,735.00					
7505 Ready to Learn Block Grant	354,755.00					
7506 Pasmart Grants	23,333.36					

	<u>Capital Reserve</u> <u>(1431) (32)</u>	<u>Other Capital</u> <u>Projects Fund (39)</u>	<u>Debt Service (40)</u>	<u>Permanent (90)</u>	<u>Total</u>
6000 Revenue from Local Sources					
6111 Current Real Estate Taxes					11,166,591.67
6113 Public Utility Realty Taxes					15,636.29
6114 Payments in Lieu of Current Taxes - State / Local					114,651.51
6120 Current Per Capita Taxes, Section 679					32,704.64
6141 Current Act 511 Per Capita Taxes					61,373.24
6151 Current Act 511 Earned Income Taxes					5,174,048.17
6153 Current Act 511 Real Estate Transfer Taxes					355,360.64
6411 Delinquent Real Estate Taxes					579,650.60
6420 Delinquent Per Capita Taxes, Section 679					9,287.04
6440 Delinquent Local Enabling Taxes - Flat Rate Assessments					15,446.19
6500 Earnings on Investments	187.00	1,917.00			41,534.32
6700 Revenues from LEA Activities					16,893.58
6831 Federal Revenue Received from Other Pennsylvania Public LEAs					5,000.00
6832 Federal IDEA Revenue Received as Pass Through					350,521.56
6910 Rentals					14,057.38
6920 Contributions and Donations from Private Sources					54,449.86
6991 Refunds of a Prior Year Expenditure					21,042.65
6992 Energy Efficiency Revenues and Incentives					105,187.55
6999 Other Revenues Not Specified Above					292,221.11
6000 Total Revenue from Local Sources	\$187.00	\$1,917.00			\$18,425,658.00
7000 Revenue from State Sources					
7111 Basic Education Funding-Formula					8,092,105.13
7112 Basic Education Funding-Social Security					583,066.60
7160 Tuition for Orphans Subsidy					45,581.24
7220 Vocational Education					82,493.29
7271 Special Education funds for School-Aged Pupils					1,418,773.41
7311 Pupil Transportation Subsidy					1,037,164.06
7312 Nonpublic and Charter School Pupil Transportation Subsidy					26,565.00
7320 Rental and Sinking Fund Payments / Building Reimbursement Subsidy					835,676.68
7330 Health Services (Medical, Dental, Nurse, Act 25)					36,215.72
7340 State Property Tax Reduction Allocation					573,517.45
7361 School Safety and Security Grants					493,775.91
7369 Other Safe School Grants					23,735.00
7505 Ready to Learn Block Grant					354,755.00
7506 Pasmart Grants					23,333.36

	<u>General Fund (10)</u>	<u>Student Sponsored Activity Fund (21)</u>	<u>Public Purpose Trust (27)</u>	<u>Other Compt. Approved (28)</u>	<u>Athletic / Activity (29)</u>	<u>Capital Reserve (690, 1850) (31)</u>
7000 Revenue from State Sources						
7509 Supplemental Equipment Grants	10,366.62					
7820 State Share of Retirement Contributions	2,419,488.06					
7000 Total Revenue from State Sources	\$16,056,612.53					
8000 Revenue from Federal Sources						
8512 IDEA, Part B	7,312.87					
8514 NCLB, Title I - Improving the Academic Achievement of the Disadvantaged	540,710.00					
8515 NCLB, Title II - Preparing, Training and Recruiting High Quality Teachers and Principals	91,318.00					
8517 NCLB, Title IV - 21st Century Schools	34,968.00					
8741 Elementary and Secondary School Emergency Relief Fund (ESSER)	320,871.91					
8742 Governor's Emergency Education Relief Fund (GEER)	25,900.00					
8749 Other CARES Act Funding	201,404.00					
8820 Medical Assistance Reimbursement for Administrative Claiming (Quarterly) Program	2,064.67					
8000 Total Revenue from Federal Sources	\$1,224,549.45					
9000 Other Financing Sources						
9310 General Fund Transfers						
9330 Capital Projects Fund Transfers	115,246.00					
9990 Insurance Recoveries	5,904.20					
9000 Total Other Financing Sources	\$121,150.20					
Total From All Sources	\$35,664,570.18	\$161,296.00				

	<u>Capital Reserve</u> <u>(1431) (32)</u>	<u>Other Capital</u> <u>Projects Fund (39)</u>	<u>Debt Service (40)</u>	<u>Permanent (90)</u>	<u>Total</u>
7000 Revenue from State Sources					
7509 Supplemental Equipment Grants					10,366.62
7820 State Share of Retirement Contributions					2,419,488.06
7000 Total Revenue from State Sources					\$16,056,612.53
8000 Revenue from Federal Sources					
8512 IDEA, Part B					7,312.87
8514 NCLB, Title I - Improving the Academic Achievement of the Disadvantaged					540,710.00
8515 NCLB, Title II - Preparing, Training and Recruiting High Quality Teachers and Principals					91,318.00
8517 NCLB, Title IV - 21st Century Schools					34,968.00
8741 Elementary and Secondary School Emergency Relief Fund (ESSER)					320,871.91
8742 Governor's Emergency Education Relief Fund (GEER)					25,900.00
8749 Other CARES Act Funding					201,404.00
8820 Medical Assistance Reimbursement for Administrative Claiming (Quarterly) Program					2,064.67
8000 Total Revenue from Federal Sources					\$1,224,549.45
9000 Other Financing Sources					
9310 General Fund Transfers		315,246.00			315,246.00
9330 Capital Projects Fund Transfers					115,246.00
9990 Insurance Recoveries					5,904.20
9000 Total Other Financing Sources		\$315,246.00			\$436,396.20
Total From All Sources	\$315,433.00	\$1,917.00			\$36,143,216.18

	<u>General Fund (10)</u>	<u>Student Sponsored Activity Fund (21)</u>	<u>Public Purpose Trust (27)</u>	<u>Other Compt Approved (28)</u>	<u>Athletic / Activity (29)</u>	<u>Capital Reserve (690-1850) (31)</u>
Revenue from Local Sources	18,262,258.00	161,296.00				
Revenue from State Sources	16,056,612.53					
Revenue from Federal Sources	1,224,549.45					
Other Financing Sources	121,150.20					
Total From All Sources	\$35,664,570.18	\$161,296.00				

	<u>Capital Reserve (1431)</u> <u>(32)</u>	<u>Other Capital Projects</u> <u>Fund (39)</u>	<u>Debt Service (40)</u>	<u>Permanent (90)</u>	<u>Total</u>
Revenue from Local Sources	187.00	1,917.00			18,425,658.00
Revenue from State Sources					16,056,612.53
Revenue from Federal Sources					1,224,549.45
Other Financing Sources	315,246.00				436,396.20
Total From All Sources	\$315,433.00	\$1,917.00			\$36,143,216.18

General Fund (10)

1000 Instruction

Total

100 Personnel Services – Salaries

100 Personnel Services – Salaries

9,306,359.52

Total Personnel Services – Salaries

\$9,306,359.52

200 Personnel Services – Employee Benefits

210 Group Insurance – Contracted Provider

2,698,489.18

220 Social Security Contributions

705,603.38

230 PSERS Retirement Contributions

3,170,695.87

250 Unemployment Compensation

8,219.71

260 Workers' Compensation

46,104.58

280 Other Post-Employment Benefits (OPEB)

143,000.00

291 Other Retirement Plans

40,100.00

299 All Other Employee Benefits

13,000.00

Total Personnel Services – Employee Benefits

\$6,825,212.72

300 Purchased Professional and Technical Services

322 Professional Educational Services – Ius

1,182,440.69

329 Professional Educational Services – Other

171,351.80

330 Other Professional Services

12,009.23

390 Other Purchased Professional and Technical Services

10,968.33

Total Purchased Professional and Technical Services

\$1,376,770.05

400 Purchased Property Services

430 Repairs and Maintenance Services

4,742.05

Total Purchased Property Services

\$4,742.05

500 Other Purchased Services

510 Student Transportation Services

37,947.37

561 Tuition To Other School Districts Within the State

40,409.77

562 Tuition To Pennsylvania Charter Schools

773,185.08

564 Tuition To Career and Technology Centers

1,421,804.46

567 Tuition To Approved Private Schools (APS) and PA Chartered Schools for the Deaf and Blind

356,514.60

568 Tuition To Private Residential Rehabilitative Institutions (PRRI) [In-State] and Detention Centers

246,334.03

580 Travel

97.98

Total Other Purchased Services

\$2,876,293.29

600 Supplies

610 General Supplies

383,659.95

630 Food

1,850.55

640 Books and Periodicals

17,949.46

650 Supplies & Fees – Technology Related

101,918.69

Total Supplies

\$505,378.65

800 Other Objects

810 Dues and Fees

1,070.55

890 Miscellaneous Expenditures

340.92

Total Other Objects

\$1,411.47

Total 1000 Instruction

\$20,896,167.75

General Fund (10)

1100 Regular Programs – Elementary / Secondary

100 Personnel Services – Salaries

100 Personnel Services – Salaries

	Elementary	Secondary	Federal	Total
	3,222,001.87	3,801,307.72	389,058.37	7,412,367.96

Total Personnel Services – Salaries

\$3,222,001.87	\$3,801,307.72	\$389,058.37	\$7,412,367.96
----------------	----------------	--------------	----------------

200 Personnel Services – Employee Benefits

210 Group Insurance – Contracted Provider
220 Social Security Contributions
230 PSERS Retirement Contributions
250 Unemployment Compensation
260 Workers' Compensation
280 Other Post-Employment Benefits (OPEB)
291 Other Retirement Plans
299 All Other Employee Benefits

Total Personnel Services – Employee Benefits

950,729.74	1,169,892.64	136,319.80	2,256,942.18
244,412.15	288,933.80	29,354.26	562,700.21
1,095,261.19	1,296,797.93	133,945.13	2,526,004.25
2,540.98	2,331.01	678.91	5,550.90
15,918.38	19,029.43	1,728.64	36,676.45
715.00	142,285.00		143,000.00
200.50	39,899.50		40,100.00
65.00	12,935.00		13,000.00

\$2,309,842.94	\$2,972,104.31	\$302,026.74	\$5,583,973.99
----------------	----------------	--------------	----------------

300 Purchased Professional and Technical Services

322 Professional Educational Services – Ius
329 Professional Educational Services – Other
330 Other Professional Services
390 Other Purchased Professional and Technical Services

Total Purchased Professional and Technical Services

3,330.34	662,737.66		666,068.00
1,622.84	1,617.16		3,240.00
1,302.23			1,302.23
10,968.33			10,968.33

\$17,223.74	\$664,354.82		\$681,578.56
-------------	--------------	--	--------------

400 Purchased Property Services

430 Repairs and Maintenance Services

Total Purchased Property Services

2,222.33	2,519.72		4,742.05
----------	----------	--	----------

\$2,222.33	\$2,519.72		\$4,742.05
------------	------------	--	------------

500 Other Purchased Services

510 Student Transportation Services
561 Tuition To Other School Districts Within the State
562 Tuition To Pennsylvania Charter Schools
568 Tuition To Private Residential Rehabilitative Institutions (PRRI) [In-State] and Detention Centers
580 Travel

Total Other Purchased Services

2,255.96	295.78		2,551.74
33.81	26,381.94		26,415.75
295,533.30	351,568.18		647,101.48
642.14	5,629.10		6,271.24
43.89	54.09		97.98

\$298,509.10	\$383,929.09		\$682,438.19
--------------	--------------	--	--------------

600 Supplies

610 General Supplies
630 Food
640 Books and Periodicals
650 Supplies & Fees – Technology Related

Total Supplies

190,493.26	153,847.12	3,863.15	348,203.53
557.36	1,293.19		1,850.55
71.75	17,877.71		17,949.46
58,875.74	31,967.95		90,843.69

\$249,998.11	\$204,985.97	\$3,863.15	\$458,847.23
--------------	--------------	------------	--------------

Total 1100 Regular Programs – Elementary / Secondary

\$6,099,798.09	\$8,029,201.63	\$694,948.26	\$14,823,947.98
----------------	----------------	--------------	-----------------

General Fund (10)

1110 Regular Programs

100 Personnel Services – Salaries

100 Personnel Services – Salaries

	Elementary	Secondary	Federal	Total
	3,222,001.87	3,801,307.72	92,820.46	7,116,130.05

Total Personnel Services – Salaries

\$3,222,001.87	\$3,801,307.72	\$92,820.46	\$7,116,130.05
----------------	----------------	-------------	----------------

200 Personnel Services – Employee Benefits

210 Group Insurance – Contracted Provider
220 Social Security Contributions
230 PSERS Retirement Contributions
250 Unemployment Compensation
260 Workers' Compensation
280 Other Post-Employment Benefits (OPEB)
291 Other Retirement Plans
299 All Other Employee Benefits

Total Personnel Services – Employee Benefits

950,729.74	1,169,892.64	12,521.60	2,133,143.98
244,412.15	288,933.80	7,063.78	540,409.73
1,095,261.19	1,296,797.93	31,713.29	2,423,772.41
2,540.98	2,331.01	234.22	5,106.21
15,918.38	19,029.43	425.16	35,372.97
715.00	142,265.00		143,000.00
200.50	39,899.50		40,100.00
65.00	12,935.00		13,000.00

\$2,309,842.94	\$2,972,104.31	\$51,958.05	\$5,333,905.30
----------------	----------------	-------------	----------------

300 Purchased Professional and Technical Services

322 Professional Educational Services – Ius
329 Professional Educational Services – Other
330 Other Professional Services
390 Other Purchased Professional and Technical Services

Total Purchased Professional and Technical Services

3,330.34	662,737.66		666,068.00
1,622.84	1,617.16		3,240.00
1,302.23			1,302.23
10,968.33			10,968.33

\$17,223.74	\$664,354.82		\$681,578.56
-------------	--------------	--	--------------

400 Purchased Property Services

430 Repairs and Maintenance Services

Total Purchased Property Services

2,222.33	2,519.72		4,742.05
----------	----------	--	----------

\$2,222.33	\$2,519.72		\$4,742.05
------------	------------	--	------------

500 Other Purchased Services

510 Student Transportation Services
561 Tuition To Other School Districts Within the State
562 Tuition To Pennsylvania Charter Schools
568 Tuition To Private Residential Rehabilitative Institutions (PRRI) [In-State] and Detention Centers
580 Travel

Total Other Purchased Services

2,255.96	295.78		2,551.74
33.81	26,381.94		26,415.75
295,533.30	351,568.18		647,101.48
642.14	5,629.10		6,271.24
43.89	54.09		97.98

\$298,509.10	\$383,929.09		\$682,438.19
--------------	--------------	--	--------------

600 Supplies

610 General Supplies
630 Food
640 Books and Periodicals
650 Supplies & Fees – Technology Related

Total Supplies

190,493.26	153,847.12	1,884.90	346,225.28
557.36	1,293.19		1,850.55
71.75	17,877.71		17,949.46
58,875.74	31,967.95		90,843.69

\$249,998.11	\$204,985.97	\$1,884.90	\$456,868.98
--------------	--------------	------------	--------------

Total 1110 Regular Programs

\$6,099,798.09	\$8,029,201.63	\$146,663.41	\$14,275,663.13
----------------	----------------	--------------	-----------------

General Fund (10)

1190 Federally-Funded Regular Programs

100 Personnel Services – Salaries

100 Personnel Services – Salaries

Elementary

Secondary

Federal

Total

296,237.91

296,237.91

Total Personnel Services – Salaries

\$296,237.91

\$296,237.91

200 Personnel Services – Employee Benefits

210 Group Insurance – Contracted Provider

220 Social Security Contributions

230 PSERS Retirement Contributions

250 Unemployment Compensation

260 Workers' Compensation

123,798.20

22,290.48

102,231.84

444.69

1,303.48

123,798.20

22,290.48

102,231.84

444.69

1,303.48

Total Personnel Services – Employee Benefits

\$250,068.69

\$250,068.69

600 Supplies

610 General Supplies

1,978.25

1,978.25

Total Supplies

\$1,978.25

\$1,978.25

Total 1190 Federally-Funded Regular Programs

\$548,284.85

\$548,284.85

General Fund (10)

1200 Special Programs – Elementary / Secondary

100 Personnel Services – Salaries

100 Personnel Services – Salaries

	Elementary	Secondary	Federal	Total
	879,576.43	783,997.04	103,914.04	1,767,487.51
Total Personnel Services – Salaries	\$879,576.43	\$783,997.04	\$103,914.04	\$1,767,487.51

200 Personnel Services – Employee Benefits

210 Group Insurance – Contracted Provider
220 Social Security Contributions
230 PSERS Retirement Contributions
250 Unemployment Compensation
260 Workers' Compensation

	170,221.51	211,661.49	22,044.00	403,927.00
	66,017.79	59,454.92	7,864.87	133,337.58
	298,100.43	268,347.67	35,051.27	601,499.37
	1,324.80	814.80	451.81	2,591.41
	4,352.91	3,922.44	523.14	8,798.49

Total Personnel Services – Employee Benefits

	\$540,017.44	\$544,201.32	\$65,935.09	\$1,150,153.85
--	---------------------	---------------------	--------------------	-----------------------

300 Purchased Professional and Technical Services

322 Professional Educational Services – Ius
329 Professional Educational Services – Other
330 Other Professional Services

	2,581.85	513,790.84		516,372.69
	33,531.08	134,580.72		168,111.80
	5,128.04	5,578.96		10,707.00

Total Purchased Professional and Technical Services

	\$41,240.97	\$653,950.52		\$695,191.49
--	--------------------	---------------------	--	---------------------

500 Other Purchased Services

510 Student Transportation Services
561 Tuition To Other School Districts Within the State
562 Tuition To Pennsylvania Charter Schools
567 Tuition To Approved Private Schools (APS) and PA Chartered Schools for the Deaf and Blind
568 Tuition To Private Residential Rehabilitative Institutions (PRRI) [In-State] and Detention Centers

	176.98	35,218.65		35,395.63
		12,728.64		12,728.64
	36,874.38	89,209.22		126,083.60
	182,710.00	81,532.60		264,242.60
	24,904.18	185,130.74		210,034.92

Total Other Purchased Services

	\$244,665.54	\$403,819.85		\$648,485.39
--	---------------------	---------------------	--	---------------------

600 Supplies

610 General Supplies
650 Supplies & Fees – Technology Related

	8,331.62	10,770.49	146.08	19,248.19
	6,333.16	4,741.84		11,075.00

Total Supplies

	\$14,664.78	\$15,512.33	\$146.08	\$30,323.19
--	--------------------	--------------------	-----------------	--------------------

800 Other Objects

810 Dues and Fees
890 Miscellaneous Expenditures

	753.66	316.89		1,070.55
	1.70	339.22		340.92

Total Other Objects

	\$755.36	\$656.11		\$1,411.47
--	-----------------	-----------------	--	-------------------

Total 1200 Special Programs – Elementary / Secondary

	\$1,720,920.52	\$2,402,137.17	\$169,995.21	\$4,293,052.90
--	-----------------------	-----------------------	---------------------	-----------------------

General Fund (10)				
1210 Life Skills Support				
100 <u>Personnel Services – Salaries</u>	Elementary	Secondary	Federal	Total
100 Personnel Services – Salaries	166,525.08	111,565.22	25,560.65	303,650.95
Total Personnel Services – Salaries	\$166,525.08	\$111,565.22	\$25,560.65	\$303,650.95
200 <u>Personnel Services – Employee Benefits</u>				
210 Group Insurance – Contracted Provider	25,460.90	28,107.10		53,568.00
220 Social Security Contributions	12,686.04	8,503.27	1,947.65	23,136.96
230 PSERS Retirement Contributions	57,340.35	36,873.58	8,068.81	102,282.74
250 Unemployment Compensation	279.50	119.47	125.16	524.13
260 Workers' Compensation	835.80	559.69	128.21	1,523.70
Total Personnel Services – Employee Benefits	\$96,602.59	\$74,163.11	\$10,269.83	\$181,035.53
300 <u>Purchased Professional and Technical Services</u>				
322 Professional Educational Services – Ius	1,010.61	201,111.75		202,122.36
Total Purchased Professional and Technical Services	\$1,010.61	\$201,111.75		\$202,122.36
500 <u>Other Purchased Services</u>				
510 Student Transportation Services	0.47	93.76		94.23
Total Other Purchased Services	\$0.47	\$93.76		\$94.23
600 <u>Supplies</u>				
610 General Supplies	1,246.42	4,349.82	31.79	5,628.03
650 Supplies & Fees – Technology Related	1,692.14	2,211.03		3,903.17
Total Supplies	\$2,938.56	\$6,560.85	\$31.79	\$9,531.20
Total 1210 Life Skills Support	\$267,077.31	\$393,494.69	\$35,862.27	\$696,434.27

General Fund (10)

1220 Sensory Support

100 Personnel Services – Salaries

100 Personnel Services – Salaries

	<u>Elementary</u>	<u>Secondary</u>	<u>Federal</u>	<u>Total</u>
	111,080.12	64,947.88		176,028.00

Total Personnel Services – Salaries

\$111,080.12 \$64,947.88 \$176,028.00

200 Personnel Services – Employee Benefits

210 Group Insurance – Contracted Provider

220 Social Security Contributions

230 PSERS Retirement Contributions

250 Unemployment Compensation

260 Workers' Compensation

Total Personnel Services – Employee Benefits

600 Supplies
610 General Supplies

	35,596.27	20,005.73		55,602.00
	8,386.98	4,968.56		13,355.54
	38,333.71	22,413.61		60,747.32
	55.01	21.78		76.79
	557.53	325.99		883.52
	\$82,929.50	\$47,735.67		\$130,665.17

Total Supplies

\$838.35 \$3,021.49 \$3,859.84

800 Other Objects

810 Dues and Fees

	753.66	316.89		1,070.55
--	--------	--------	--	----------

Total Other Objects

\$753.66 \$316.89 \$1,070.55

Total 1220 Sensory Support

\$195,601.63 \$116,021.93 \$311,623.56

General Fund (10)

1230 Emotional Support

100 Personnel Services – Salaries

100 Personnel Services – Salaries

Elementary

297,664.55

Secondary

50,766.34

Federal

34,388.98

Total

382,819.87

Total Personnel Services – Salaries

\$297,664.55

200 Personnel Services – Employee Benefits

210 Group Insurance – Contracted Provider

220 Social Security Contributions

230 PSERS Retirement Contributions

250 Unemployment Compensation

260 Workers' Compensation

88,868.00

4,889.00

2,588.56

93,757.00

22,511.94

3,883.61

11,816.01

28,984.11

102,603.04

17,519.34

172.46

131,938.39

578.37

129.86

174.22

880.69

1,494.04

254.85

1,923.11

1,923.11

Total Personnel Services – Employee Benefits

\$216,055.39

\$26,676.66

\$14,751.25

\$257,483.30

300 Purchased Professional and Technical Services

322 Professional Educational Services – Ius

1,339.56

266,574.08

267,913.64

Total Purchased Professional and Technical Services

\$1,339.56

\$266,574.08

\$267,913.64

600 Supplies

610 General Supplies

650 Supplies & Fees – Technology Related

1,493.17

129.99

17.94

1,641.10

2,533.77

2,533.77

Total Supplies

\$4,026.94

\$129.99

\$17.94

\$4,174.87

Total 1230 Emotional Support

\$519,086.44

\$344,147.07

\$49,158.17

\$912,391.68

General Fund (10)

1240 Academic Support

100 Personnel Services – Salaries

100 Personnel Services – Salaries

	Elementary	Secondary	Federal	Total
	227,577.45	408,602.50	22,357.81	658,537.76

Total Personnel Services – Salaries

	\$227,577.45	\$408,602.50	\$22,357.81	\$658,537.76
--	---------------------	---------------------	--------------------	---------------------

200 Personnel Services – Employee Benefits

210 Group Insurance – Contracted Provider

220 Social Security Contributions

230 PSERS Retirement Contributions

250 Unemployment Compensation

260 Workers' Compensation

Total Personnel Services – Employee Benefits

	10,000.12	104,569.88		114,570.00
	17,413.92	30,827.88	1,686.41	49,928.21
	78,304.53	140,426.60	7,710.09	226,441.22
	344.43	396.83	101.99	843.25
	1,132.89	2,038.50	112.29	3,283.68

300 Purchased Professional and Technical Services

322 Professional Educational Services – Ius

329 Professional Educational Services – Other

330 Other Professional Services

Total Purchased Professional and Technical Services

	23.25	4,627.66		4,650.91
	32,854.80			32,854.80
	5,128.04	5,578.96		10,707.00

500 Other Purchased Services

510 Student Transportation Services

561 Tuition To Other School Districts Within the State

562 Tuition To Pennsylvania Charter Schools

Total Other Purchased Services

	176.51	35,124.89		35,301.40
		12,728.64		12,728.64
	36,874.38	89,209.22		126,083.60

600 Supplies

610 General Supplies

650 Supplies & Fees – Technology Related

Total Supplies

	4,743.36	2,163.28	96.35	7,002.99
	1,259.70	844.59		2,104.29

Total 1240 Academic Support

	\$6,003.06	\$3,007.87	\$96.35	\$9,107.28
	\$415,833.38	\$837,139.43	\$32,064.94	\$1,285,037.75

General Fund (10)

1241 Learning Support – Public

100 Personnel Services – Salaries

100 Personnel Services – Salaries

	Elementary	Secondary	Federal	Total
	192,087.43	328,240.52	22,357.81	542,685.76

Total Personnel Services – Salaries

\$192,087.43 \$328,240.52 \$22,357.81 \$542,685.76

200 Personnel Services – Employee Benefits

210 Group Insurance – Contracted Provider

220 Social Security Contributions

230 PSERS Retirement Contributions

250 Unemployment Compensation

260 Workers' Compensation

Total Personnel Services – Employee Benefits

10,000.12	82,843.88		92,844.00
14,698.91	24,906.79	1,686.41	41,292.11
66,056.84	112,693.72	7,710.09	186,460.65
326.12	363.81	101.99	791.92
954.65	1,635.17	112.29	2,702.11

300 Purchased Professional and Technical Services

322 Professional Educational Services – Ius

329 Professional Educational Services – Other

330 Other Professional Services

Total Purchased Professional and Technical Services

23.25	4,627.66		4,650.91
32,854.80			32,854.80
5,128.04	5,578.96		10,707.00

500 Other Purchased Services

510 Student Transportation Services

561 Tuition To Other School Districts Within the State

562 Tuition To Pennsylvania Charter Schools

Total Other Purchased Services

176.51	35,124.89		35,301.40
	12,728.64		12,728.64
36,874.38	89,209.22		126,083.60

600 Supplies

610 General Supplies

650 Supplies & Fees – Technology Related

Total Supplies

4,741.78	1,304.86	96.35	6,142.99
1,259.70			1,259.70

Total 1241 Learning Support – Public

\$6,001.48 \$1,304.86 \$96.35 \$7,402.69
\$365,182.53 \$699,258.12 \$32,064.94 \$1,096,505.59

General Fund (10)

1243 Gifted Support

100 Personnel Services – Salaries

100 Personnel Services – Salaries

Elementary

35,490.02

Secondary

80,361.98

Federal

115,852.00

Total

Total Personnel Services – Salaries

\$35,490.02

\$80,361.98

\$115,852.00

200 Personnel Services – Employee Benefits

210 Group Insurance – Contracted Provider

220 Social Security Contributions

230 PSERS Retirement Contributions

250 Unemployment Compensation

260 Workers' Compensation

2,715.01

12,247.69

18.31

178.24

21,726.00

5,921.09

27,732.88

33.02

403.33

21,726.00

8,636.10

39,980.57

51.33

581.57

Total Personnel Services – Employee Benefits

\$15,159.25

\$55,816.32

\$70,975.57

600 Supplies

610 General Supplies

650 Supplies & Fees – Technology Related

1.58

858.42

844.59

860.00

844.59

Total Supplies

\$1.58

\$1,703.01

\$1,704.59

Total 1243 Gifted Support

\$50,650.85

\$137,881.31

\$188,532.16

General Fund (10)				
1260 Physical Support				
300 <u>Purchased Professional and Technical Services</u>	<u>Elementary</u>	<u>Secondary</u>	<u>Federal</u>	<u>Total</u>
322 Professional Educational Services -- lvs	53.25	10,595.93		10,649.18
329 Professional Educational Services -- Other	676.28	134,580.72		135,257.00
Total Purchased Professional and Technical Services	\$729.53	\$145,176.65		\$145,906.18
600 <u>Supplies</u>				
610 General Supplies	0.37	73.61		73.98
Total Supplies	\$0.37	\$73.61		\$73.98
Total 1260 Physical Support	\$729.90	\$145,250.26		\$145,980.16

General Fund (10)

1270 Multi-Handicapped Support

100 Personnel Services – Salaries

100 Personnel Services – Salaries

Elementary

76,729.23

Secondary

148,115.10

Federal

21,606.60

Total

246,450.93

Total Personnel Services – Salaries

\$76,729.23

\$148,115.10

\$21,606.60

\$246,450.93

200 Personnel Services – Employee Benefits

210 Group Insurance – Contracted Provider

220 Social Security Contributions

230 PSERS Retirement Contributions

250 Unemployment Compensation

260 Workers' Compensation

10,296.22

5,018.91

21,518.80

67.49

332.65

54,089.78

11,271.60

51,114.54

146.86

743.41

22,044.00

1,642.25

7,456.36

52.20

108.42

86,430.00

17,932.76

80,089.70

266.55

1,184.48

Total Personnel Services – Employee Benefits

\$37,234.07

\$117,366.19

\$31,303.23

\$185,903.49

600 Supplies

610 General Supplies

650 Supplies & Fees – Technology Related

9.95

847.55

1,032.30

1,686.22

1,042.25

2,533.77

Total Supplies

\$857.50

\$2,718.52

\$52,909.83

\$3,576.02

Total 1270 Multi-Handicapped Support

\$114,820.80

\$268,199.81

\$52,909.83

\$435,930.44

General Fund (10)					
1290 Special Programs - Other Support		Elementary	Secondary	Federal	Total
300 <u>Purchased Professional and Technical Services</u>					
322	Professional Educational Services – lvs	155.18	30,881.42		31,036.60
Total Purchased Professional and Technical Services		\$155.18	\$30,881.42		\$31,036.60
500 <u>Other Purchased Services</u>					
567	Tuition To Approved Private Schools (APS) and PA Chartered Schools for the Deaf and Blind	182,710.00	81,532.60		264,242.60
568	Tuition To Private Residential Rehabilitative Institutions (PRRI) [In-State] and Detention Centers	24,904.18	185,130.74		210,034.92
Total Other Purchased Services		\$207,614.18	\$266,663.34		\$474,277.52
800 <u>Other Objects</u>					
890	Miscellaneous Expenditures	1.70	339.22		340.92
Total Other Objects		\$1.70	\$339.22		\$340.92
Total 1290 Special Programs - Other Support		\$207,771.06	\$297,883.98		\$505,655.04

General Fund (10)				
1300 Vocational Education				
100 <u>Personnel Services – Salaries</u>	Elementary	Secondary	Federal	Total
100 Personnel Services – Salaries		121,052.65		121,052.65
Total Personnel Services – Salaries		\$121,052.65		\$121,052.65
200 <u>Personnel Services – Employee Benefits</u>				
210 Group Insurance – Contracted Provider		37,620.00		37,620.00
220 Social Security Contributions		9,149.91		9,149.91
230 PSERS Retirement Contributions		41,723.53		41,723.53
250 Unemployment Compensation		69.28		69.28
260 Workers' Compensation		605.65		605.65
Total Personnel Services – Employee Benefits		\$89,168.37		\$89,168.37
500 <u>Other Purchased Services</u>				
564 Tuition To Career and Technology Centers		1,421,804.46		1,421,804.46
Total Other Purchased Services		\$1,421,804.46		\$1,421,804.46
600 <u>Supplies</u>				
610 General Supplies		16,208.23		16,208.23
Total Supplies		\$16,208.23		\$16,208.23
Total 1300 Vocational Education		\$1,648,233.71		\$1,648,233.71

General Fund (10)

1400 Other Instructional Programs – Elementary / Secondary

100 Personnel Services – Salaries

	Elementary	Secondary	Federal	Total
100 Personnel Services – Salaries	13.83	4,242.17		4,256.00

Total Personnel Services – Salaries	\$13.83	\$4,242.17		\$4,256.00
-------------------------------------	---------	------------	--	------------

200 Personnel Services – Employee Benefits

220 Social Security Contributions	1.05	323.19		324.24
-----------------------------------	------	--------	--	--------

230 PSERS Retirement Contributions	4.77	1,463.95		1,468.72
------------------------------------	------	----------	--	----------

250 Unemployment Compensation		0.71		0.71
-------------------------------	--	------	--	------

260 Workers' Compensation	0.06	18.67		18.73
---------------------------	------	-------	--	-------

Total Personnel Services – Employee Benefits	\$5.88	\$1,806.52		\$1,812.40
--	--------	------------	--	------------

500 Other Purchased Services

561 Tuition To Other School Districts Within the State		1,265.38		1,265.38
--	--	----------	--	----------

567 Tuition To Approved Private Schools (APS) and PA Chartered Schools for the Deaf and Blind	29,365.75	62,906.25		92,272.00
---	-----------	-----------	--	-----------

568 Tuition To Private Residential Rehabilitative Institutions (PRRI) [In-State] and Detention Centers	14,141.73	15,886.14		30,027.87
--	-----------	-----------	--	-----------

Total Other Purchased Services	\$43,507.48	\$80,057.77		\$123,565.25
--------------------------------	-------------	-------------	--	--------------

Total 1400 Other Instructional Programs – Elementary / Secondary	\$43,527.19	\$86,106.46		\$129,633.65
--	-------------	-------------	--	--------------

General Fund (10)

1430 Homebound Instruction

100 Personnel Services – Salaries

	Elementary	Secondary	Federal	Total
100 Personnel Services – Salaries	13.83	4,242.17		4,256.00

Total Personnel Services – Salaries	\$13.83	\$4,242.17		\$4,256.00
-------------------------------------	---------	------------	--	------------

200 Personnel Services – Employee Benefits

220 Social Security Contributions	1.05	323.19		324.24
-----------------------------------	------	--------	--	--------

230 PSERS Retirement Contributions	4.77	1,463.95		1,468.72
------------------------------------	------	----------	--	----------

250 Unemployment Compensation		0.71		0.71
-------------------------------	--	------	--	------

260 Workers' Compensation	0.06	18.67		18.73
---------------------------	------	-------	--	-------

Total Personnel Services – Employee Benefits	\$5.88	\$1,806.52		\$1,812.40
--	--------	------------	--	------------

Total 1430 Homebound Instruction	\$19.71	\$6,048.69		\$6,068.40
----------------------------------	---------	------------	--	------------

General Fund (10)				
1440 Alternative Regular Education Programs				
500 <u>Other Purchased Services</u>				
561 Tuition To Other School Districts Within the State				1,265.38
567 Tuition To Approved Private Schools (APS) and PA Chartered Schools for the Deaf and Blind	29,365.75	62,906.25		92,272.00
568 Tuition To Private Residential Rehabilitative Institutions (PRRI) [In-State] and Detention Centers	14,141.73	15,886.14		30,027.87
Total Other Purchased Services	\$43,507.48	\$80,057.77		\$123,565.25
Total 1440 Alternative Regular Education Programs	\$43,507.48	\$80,057.77		\$123,565.25

General Fund (10)				
1441 Adjudicated / Court-Placed Programs				
500 <u>Other Purchased Services</u>	<u>Elementary</u>	<u>Secondary</u>	<u>Federal</u>	<u>Total</u>
561 Tuition To Other School Districts Within the State		1,265.38		1,265.38
Total Other Purchased Services		\$1,265.38		\$1,265.38
Total 1441 Adjudicated / Court-Placed Programs		\$1,265.38		\$1,265.38

General Fund (10)

1442 Alternative Education Programs

500 Other Purchased Services

567 Tuition To Approved Private Schools (APS) and PA Chartered Schools for the Deaf and Blind
568 Tuition To Private Residential Rehabilitative Institutions (PRRI) [In-State] and Detention Centers

	<u>Elementary</u>	<u>Secondary</u>	<u>Federal</u>	<u>Total</u>
	29,365.75	62,906.25		92,272.00
	14,141.73	15,886.14		30,027.87
Total Other Purchased Services	\$43,507.48	\$78,792.39		\$122,299.87
Total 1442 Alternative Education Programs	\$43,507.48	\$78,792.39		\$122,299.87

General Fund (10)					
1600 Adult Education Programs					
		Elementary	Secondary	Federal	Total
100	<u>Personnel Services – Salaries</u>				
100	Personnel Services – Salaries				1,195.40
Total Personnel Services – Salaries					\$1,195.40
200	<u>Personnel Services – Employee Benefits</u>				
220	Social Security Contributions				91.44
250	Unemployment Compensation				7.41
260	Workers' Compensation				5.26
Total Personnel Services – Employee Benefits					\$104.11
Total 1600 Adult Education Programs					\$1,299.51

General Fund (10)

2000 Support Services

100 Personnel Services – Salaries

100 Personnel Services – Salaries

3,423,583.15

Total

Total Personnel Services – Salaries

\$3,423,583.15

200 Personnel Services – Employee Benefits

210 Group Insurance – Contracted Provider

1,289,949.88

220 Social Security Contributions

257,129.94

230 PSERS Retirement Contributions

1,137,554.11

240 Tuition Reimbursement

77,991.73

250 Unemployment Compensation

3,168.67

260 Workers' Compensation

17,198.56

291 Other Retirement Plans

2,040.00

299 All Other Employee Benefits

21,429.74

Total Personnel Services – Employee Benefits

\$2,806,462.63

300 Purchased Professional and Technical Services

310 Official / Administrative Services

600.00

322 Professional Educational Services – Ius

43,473.30

329 Professional Educational Services – Other

8,754.20

330 Other Professional Services

79,650.00

340 Technical Services

2,643.95

350 Security / Safety Services

33,302.58

360 Employee Training and Development Services

27,815.30

390 Other Purchased Professional and Technical Services

12,052.77

Total Purchased Professional and Technical Services

\$208,292.10

400 Purchased Property Services

410 Cleaning Services

13,380.00

420 Utility Services

72,537.11

430 Repairs and Maintenance Services

77,327.40

440 Rentals

19,485.95

460 Extermination Services

8,735.00

490 Other Purchased Property Services

15,954.40

Total Purchased Property Services

\$207,419.86

500 Other Purchased Services

513 Contracted Carriers

1,631,506.47

516 Student Transportation Services From the IU

33,938.31

520 Insurance – General

2,460.76

522 Automotive Liability Insurance

6,784.00

523 General Property and Liability Insurance

92,381.00

530 Communications

61,082.96

549 Other Advertising/Public Relations

34,484.16

550 Printing and Binding

14,917.68

580 Travel

3,138.43

591 Services Purchased Locally

6,609.14

Total Other Purchased Services

\$1,887,302.91

General Fund (10)		
2000 Support Services		
600 <u>Supplies</u>		<u>Total</u>
610 General Supplies		1,495,076.89
620 Energy		509,138.51
640 Books and Periodicals		4,748.12
650 Supplies & Fees – Technology Related		467,932.14
Total Supplies		\$2,476,895.66
700 <u>Property</u>		
758 Capitalized Technology Software - Original		24,350.90
766 Capitalized Technology Equipment – Replacement		37,880.45
790 Other Property		12,288.79
Total Property		\$74,520.14
800 <u>Other Objects</u>		
810 Dues and Fees		12,713.64
890 Miscellaneous Expenditures		4,395.76
Total Other Objects		\$17,109.40
Total 2000 Support Services		\$11,101,585.85

General Fund (10)

2100 Support Services – Students

100 Personnel Services – Salaries

100 Personnel Services – Salaries

	Elementary	Secondary	Federal	Total
	127,604.56	323,977.42	22,000.00	634,735.84

Total Personnel Services – Salaries

\$127,604.56 \$323,977.42 \$22,000.00 \$634,735.84

200 Personnel Services – Employee Benefits

210 Group Insurance – Contracted Provider

220 Social Security Contributions

230 PSERS Retirement Contributions

250 Unemployment Compensation

260 Workers' Compensation

299 All Other Employee Benefits

46,128.51	68,053.49	3,376.00	160,482.19
9,600.70	24,657.00	1,666.28	48,164.79
44,036.69	111,879.90	7,516.30	219,046.98
46.30	212.32	24.81	469.45
640.44	1,627.07	95.92	3,172.21
			333.70

Total Personnel Services – Employee Benefits

\$100,452.64 \$206,429.78 \$12,679.31 \$431,669.32

300 Purchased Professional and Technical Services

322 Professional Educational Services – Lus

330 Other Professional Services

340 Technical Services

207.27	41,247.24		42,841.20
162.30	32,297.70		32,460.00
5.44	1,083.56		1,089.00

Total Purchased Professional and Technical Services

\$375.01 \$74,628.50 \$76,390.20

500 Other Purchased Services

530 Communications

580 Travel

			600.00
			148.33

Total Other Purchased Services

 \$748.33

600 Supplies

610 General Supplies

650 Supplies & Fees – Technology Related

2,714.58	10,223.88		13,068.45
1,008.56	5,003.74		6,012.30

Total Supplies

\$3,723.14 \$15,227.62 \$19,080.75

800 Other Objects

810 Dues and Fees

0.92	184.08		474.29
------	--------	--	--------

Total Other Objects

\$0.92 \$184.08 \$474.29

Total 2100 Support Services – Students

\$232,156.27 \$620,447.40 \$34,679.31 \$1,163,098.73

General Fund (10)

2120 Guidance Services

100 Personnel Services – Salaries

100 Personnel Services – Salaries

	Elementary	Secondary	Federal	Total
	127,071.06	217,810.92		344,881.98

Total Personnel Services – Salaries

\$127,071.06 \$217,810.92 \$344,881.98

200 Personnel Services – Employee Benefits

210 Group Insurance – Contracted Provider

220 Social Security Contributions

230 PSERS Retirement Contributions

250 Unemployment Compensation

260 Workers' Compensation

46,045.16	51,466.84		97,512.00
9,559.80	16,518.50		26,078.30
43,852.20	75,166.45		119,018.65
45.80	113.59		159.39
637.76	1,093.34		1,731.10

Total Personnel Services – Employee Benefits

\$100,140.72 \$144,358.72 \$244,499.44

300 Purchased Professional and Technical Services

330 Other Professional Services

340 Technical Services

162.30	32,297.70		32,460.00
5.44	1,083.56		1,089.00

Total Purchased Professional and Technical Services

\$167.74 \$33,381.26 \$33,549.00

600 Supplies

610 General Supplies

650 Supplies & Fees – Technology Related

2,692.96	5,921.50		8,614.46
1,003.50	3,996.50		5,000.00

Total Supplies

\$3,696.46 \$9,918.00 \$13,614.46

Total 2120 Guidance Services

\$231,075.98 \$405,468.90 \$636,544.88

General Fund (10)				
2130 Attendance Services				
100 <u>Personnel Services – Salaries</u>				
100 Personnel Services – Salaries				60,273.86
Total Personnel Services – Salaries				\$60,273.86
200 <u>Personnel Services – Employee Benefits</u>				
210 Group Insurance – Contracted Provider				11,070.19
220 Social Security Contributions				4,528.21
230 PSERS Retirement Contributions				20,800.48
250 Unemployment Compensation				61.98
260 Workers' Compensation				302.51
299 All Other Employee Benefits				333.70
Total Personnel Services – Employee Benefits				\$37,097.07
500 <u>Other Purchased Services</u>				
530 Communications				600.00
580 Travel				148.33
Total Other Purchased Services				\$748.33
800 <u>Other Objects</u>				
810 Dues and Fees				194.29
Total Other Objects				\$194.29
Total 2130 Attendance Services				\$98,313.55

Elementary

Secondary

Federal

Total

General Fund (10)				
2140 Psychological Services				
100 <u>Personnel Services – Salaries</u>	<u>Elementary</u>	<u>Secondary</u>	<u>Federal</u>	<u>Total</u>
100 Personnel Services – Salaries	533.50	106,166.50	22,000.00	128,700.00
Total Personnel Services – Salaries	\$533.50	\$106,166.50	\$22,000.00	\$128,700.00
200 <u>Personnel Services – Employee Benefits</u>				
210 Group Insurance – Contracted Provider	83.35	16,566.65	3,376.00	20,046.00
220 Social Security Contributions	40.90	8,138.50	1,666.28	9,845.68
230 PSERS Retirement Contributions	184.49	36,713.45	7,516.30	44,414.24
250 Unemployment Compensation	0.50	98.73	24.81	124.04
260 Workers' Compensation	2.68	533.73	95.92	632.33
Total Personnel Services – Employee Benefits	\$311.92	\$62,071.06	\$12,679.31	\$75,062.29
600 <u>Supplies</u>				
610 General Supplies	21.62	4,302.38		4,324.00
650 Supplies & Fees – Technology Related	5.06	1,007.24		1,012.30
Total Supplies	\$26.68	\$5,309.62		\$5,336.30
800 <u>Other Objects</u>				
810 Dues and Fees	0.92	184.08		185.00
Total Other Objects	\$0.92	\$184.08		\$185.00
Total 2140 Psychological Services	\$873.02	\$173,731.26	\$34,679.31	\$209,283.59

General Fund (10)				
2150 Speech Pathology and Audiology Services				
300 <u>Purchased Professional and Technical Services</u>	<u>Elementary</u>	<u>Secondary</u>	<u>Federal</u>	<u>Total</u>
322 Professional Educational Services — lvs	207.27	41,247.24		41,454.51
Total Purchased Professional and Technical Services	\$207.27	\$41,247.24		\$41,454.51
Total 2150 Speech Pathology and Audiology Services	\$207.27	\$41,247.24		\$41,454.51

General Fund (10)				
2160 Social Work Services				
100	<u>Personnel Services – Salaries</u>			
100	Personnel Services – Salaries			100,880.00
Total Personnel Services – Salaries				\$100,880.00
200 <u>Personnel Services – Employee Benefits</u>				
210	Group Insurance – Contracted Provider			31,854.00
220	Social Security Contributions			7,712.60
230	PSERS Retirement Contributions			34,813.61
250	Unemployment Compensation			124.04
260	Workers' Compensation			506.27
Total Personnel Services – Employee Benefits				\$75,010.52
300 <u>Purchased Professional and Technical Services</u>				
322	Professional Educational Services – Ius			1,386.69
Total Purchased Professional and Technical Services				\$1,386.69
600 <u>Supplies</u>				
610	General Supplies			129.99
Total Supplies				\$129.99
800 <u>Other Objects</u>				
810	Dues and Fees			95.00
Total Other Objects				\$95.00
Total 2160 Social Work Services				\$177,502.20

General Fund (10)

2200 Support Services – Instructional Staff

100 Personnel Services – Salaries

100 Personnel Services – Salaries

Elementary

Secondary

Federal

Total

41,589.14

316,772.01

19,337.99

377,699.14

Total Personnel Services – Salaries

\$41,589.14

\$316,772.01

\$19,337.99

\$377,699.14

200 Personnel Services – Employee Benefits

210 Group Insurance – Contracted Provider

220 Social Security Contributions

230 PSERS Retirement Contributions

240 Tuition Reimbursement

250 Unemployment Compensation

260 Workers' Compensation

299 All Other Employee Benefits

4,242.06

3,158.10

14,352.50

30,454.71

109.36

208.93

12.00

78,540.24

24,113.43

109,256.20

44,029.82

160.44

1,590.14

2,388.00

28,014.00

1,460.34

6,646.94

74,484.53

362.66

96.97

2,400.00

110,796.30

28,731.87

130,255.64

74,484.53

362.66

1,896.04

2,400.00

Total Personnel Services – Employee Benefits

\$52,537.66

\$260,078.27

\$36,311.11

\$348,927.04

300 Purchased Professional and Technical Services

360 Employee Training and Development Services

6,192.43

16,353.57

22,546.00

Total Purchased Professional and Technical Services

\$6,192.43

\$16,353.57

\$22,546.00

500 Other Purchased Services

530 Communications

580 Travel

6.00

354.34

1,194.00

409.50

1,200.00

763.84

Total Other Purchased Services

\$360.34

\$1,603.50

\$1,963.84

600 Supplies

610 General Supplies

640 Books and Periodicals

650 Supplies & Fees – Technology Related

1,045.91

4,770.37

3,966.77

4,987.69

(22.25)

41,681.87

6,033.60

4,748.12

45,648.64

Total Supplies

\$9,783.05

\$46,647.31

\$56,430.36

800 Other Objects

810 Dues and Fees

2.32

461.68

464.00

Total Other Objects

\$2.32

\$461.68

\$464.00

Total 2200 Support Services – Instructional Staff

\$110,464.94

\$641,916.34

\$55,649.10

\$808,030.38

General Fund (10)

2250 School Library Services

100 Personnel Services – Salaries

100 Personnel Services – Salaries

Elementary

40,200.54

Secondary

40,442.12

Federal

18,383.95

Total

99,026.61

Total Personnel Services – Salaries

\$40,200.54

200 Personnel Services – Employee Benefits

210 Group Insurance – Contracted Provider

220 Social Security Contributions

230 PSERS Retirement Contributions

250 Unemployment Compensation

260 Workers' Compensation

3,866.75

3,052.39

13,873.30

108.56

201.96

3,853.25

3,077.51

13,894.76

0.92

203.05

28,014.00

1,387.67

6,317.71

88.44

92.28

35,734.00

7,517.57

34,085.77

197.92

497.29

Total Personnel Services – Employee Benefits

\$21,102.96

\$21,029.49

\$35,900.10

\$78,032.55

600 Supplies

610 General Supplies

640 Books and Periodicals

650 Supplies & Fees – Technology Related

1,023.68

4,770.37

3,776.87

563.76

(22.25)

3,893.21

1,587.44

4,748.12

7,670.08

Total Supplies

\$9,570.92

\$4,434.72

\$54,284.05

\$14,005.64

Total 2250 School Library Services

\$70,874.42

\$65,906.33

\$191,064.80

General Fund (10)

2260 Instruction and Curriculum Development Services

100 Personnel Services – Salaries

100 Personnel Services – Salaries

	Elementary	Secondary	Federal	Total
	1,388.60	276,329.89	954.04	278,672.53

Total Personnel Services – Salaries \$1,388.60 \$276,329.89 \$954.04 \$278,672.53

200 Personnel Services – Employee Benefits

210 Group Insurance – Contracted Provider

220 Social Security Contributions

230 PSERS Retirement Contributions

250 Unemployment Compensation

260 Workers' Compensation

299 All Other Employee Benefits

Total Personnel Services – Employee Benefits \$979.99 \$195,018.96 \$411.01 \$196,409.96

500 Other Purchased Services

530 Communications

580 Travel

	6.00	1,194.00		1,200.00
	0.32	63.52		63.84

Total Other Purchased Services \$6.32 \$1,257.52 \$1,263.84

600 Supplies

610 General Supplies

650 Supplies & Fees – Technology Related

	20.46	4,072.19		4,092.65
	188.84	37,577.77		37,766.61

Total Supplies \$209.30 \$41,649.96 \$41,859.26

800 Other Objects

810 Dues and Fees

	2.32	461.68		464.00
--	------	--------	--	--------

Total Other Objects \$2.32 \$461.68 \$464.00

Total 2260 Instruction and Curriculum Development Services \$2,586.53 \$514,718.01 \$1,365.05 \$518,669.59

General Fund (10)				
2270 Instructional Staff Professional Development Services	<u>Elementary</u>	<u>Secondary</u>	<u>Federal</u>	<u>Total</u>
200 <u>Personnel Services – Employee Benefits</u>				
240 Tuition Reimbursement	30,454.71	44,029.82		74,484.53
Total Personnel Services – Employee Benefits	\$30,454.71	\$44,029.82		\$74,484.53
300 <u>Purchased Professional and Technical Services</u>				
360 Employee Training and Development Services	6,192.43	16,353.57		22,546.00
Total Purchased Professional and Technical Services	\$6,192.43	\$16,353.57		\$22,546.00
500 <u>Other Purchased Services</u>				
580 Travel	354.02	345.98		700.00
Total Other Purchased Services	\$354.02	\$345.98		\$700.00
600 <u>Supplies</u>				
610 General Supplies	1.77	351.74		353.51
650 Supplies & Fees – Technology Related	1.06	210.89		211.95
Total Supplies	\$2.83	\$562.63		\$565.46
Total 2270 Instructional Staff Professional Development Services	\$37,003.99	\$61,292.00		\$98,295.99

General Fund (10)				
2300 Support Services – Administration				
100 <u>Personnel Services – Salaries</u>	<u>Elementary</u>	<u>Secondary</u>	<u>Federal</u>	<u>Total</u>
100 Personnel Services – Salaries	268,323.95	431,995.85		899,820.80
Total Personnel Services – Salaries	\$268,323.95	\$431,995.85		\$899,820.80
200 <u>Personnel Services – Employee Benefits</u>				
210 Group Insurance – Contracted Provider	84,839.33	105,834.89		239,809.21
220 Social Security Contributions	20,429.40	32,325.18		66,796.76
230 PSERS Retirement Contributions	92,598.60	149,081.71		304,662.09
250 Unemployment Compensation	215.13	178.45		403.45
260 Workers' Compensation	1,346.93	2,168.33		4,520.00
299 All Other Employee Benefits	556.95	4,728.60		11,400.94
Total Personnel Services – Employee Benefits	\$199,986.34	\$294,317.16		\$627,592.45
300 <u>Purchased Professional and Technical Services</u>				
310 Official / Administrative Services				600.00
329 Professional Educational Services – Other				200.00
330 Other Professional Services				38,490.00
390 Other Purchased Professional and Technical Services				545.00
Total Purchased Professional and Technical Services				\$39,835.00
400 <u>Purchased Property Services</u>				
430 Repairs and Maintenance Services	21,354.75	13,676.09		35,030.84
440 Rentals	8,775.50	9,085.64		17,861.14
Total Purchased Property Services	\$30,130.25	\$22,761.73		\$52,891.98
500 <u>Other Purchased Services</u>				
520 Insurance – General				2,460.76
530 Communications	1,206.77	2,943.23		4,150.00
549 Other Advertising/Public Relations				34,484.16
550 Printing and Binding				14,917.68
580 Travel		17.00		426.74
591 Services Purchased Locally				6,459.14
Total Other Purchased Services	\$1,206.77	\$2,960.23		\$62,898.48
600 <u>Supplies</u>				
610 General Supplies	8,099.33	18,166.17		29,306.93
Total Supplies	\$8,099.33	\$18,166.17		\$29,306.93
800 <u>Other Objects</u>				
810 Dues and Fees	2.86	813.14		8,044.95
Total Other Objects	\$2.86	\$813.14		\$8,044.95
Total 2300 Support Services – Administration	\$507,749.50	\$771,014.28		\$1,720,390.59

General Fund (10)			
2310 Board Services			
100 <u>Personnel Services – Salaries</u>	Elementary	Secondary	Federal
100 Personnel Services – Salaries			Total
			3,570.06
Total Personnel Services – Salaries			\$3,570.06
200 <u>Personnel Services – Employee Benefits</u>			
220 Social Security Contributions			267.72
230 PSERS Retirement Contributions			1,232.14
250 Unemployment Compensation			2.68
260 Workers' Compensation			17.81
Total Personnel Services – Employee Benefits			\$1,520.35
300 <u>Purchased Professional and Technical Services</u>			
310 Official / Administrative Services			600.00
330 Other Professional Services			15,015.00
390 Other Purchased Professional and Technical Services			545.00
Total Purchased Professional and Technical Services			\$16,160.00
500 <u>Other Purchased Services</u>			
520 Insurance – General			2,460.76
549 Other Advertising/Public Relations			34,484.16
Total Other Purchased Services			\$36,944.92
600 <u>Supplies</u>			
610 General Supplies			443.72
Total Supplies			\$443.72
800 <u>Other Objects</u>			
810 Dues and Fees			2,750.00
Total Other Objects			\$2,750.00
Total 2310 Board Services			\$61,389.05

General Fund (10)					
2330 Tax Assessment and Collection Services					
100	<u>Personnel Services – Salaries</u>	Elementary	Secondary	Federal	Total
100	Personnel Services – Salaries				1,335.00
Total Personnel Services – Salaries					\$1,335.00
200	<u>Personnel Services – Employee Benefits</u>				
220	Social Security Contributions				102.13
Total Personnel Services – Employee Benefits					\$102.13
500	<u>Other Purchased Services</u>				
550	Printing and Binding				13,515.68
591	Services Purchased Locally				6,459.14
Total Other Purchased Services					\$19,974.82
Total 2330 Tax Assessment and Collection Services					\$21,411.95

General Fund (10)			
2350 Legal and Accounting Services	Elementary	Secondary	Federal
300 <u>Purchased Professional and Technical Services</u>			Total
330 Other Professional Services			23,475.00
Total Purchased Professional and Technical Services			\$23,475.00
500 <u>Other Purchased Services</u>			
580 Travel			397.25
Total Other Purchased Services			\$397.25
Total 2350 Legal and Accounting Services			\$23,872.25

General Fund (10)				
2360 Office of the Superintendent / Executive Director Services				
100 <u>Personnel Services – Salaries</u>	<u>Elementary</u>	<u>Secondary</u>	<u>Federal</u>	<u>Total</u>
100 Personnel Services – Salaries				181,790.18
Total Personnel Services – Salaries				\$181,790.18
200 <u>Personnel Services – Employee Benefits</u>				
210 Group Insurance – Contracted Provider				49,102.19
220 Social Security Contributions				13,672.33
230 PSERS Retirement Contributions				61,749.64
250 Unemployment Compensation				7.19
260 Workers' Compensation				986.93
299 All Other Employee Benefits				6,115.39
Total Personnel Services – Employee Benefits				\$131,633.67
300 <u>Purchased Professional and Technical Services</u>				
329 Professional Educational Services – Other				200.00
Total Purchased Professional and Technical Services				\$200.00
500 <u>Other Purchased Services</u>				
530 Communications	2.75	547.25		550.00
580 Travel				12.49
Total Other Purchased Services				\$562.49
600 <u>Supplies</u>				
610 General Supplies				2,597.71
Total Supplies				\$2,597.71
800 <u>Other Objects</u>				
810 Dues and Fees				4,478.95
Total Other Objects				\$4,478.95
Total 2360 Office of the Superintendent / Executive Director Services				\$321,263.00

General Fund (10)				
2370 Community Relations Services				
500 <u>Other Purchased Services</u>	<u>Elementary</u>	<u>Secondary</u>	<u>Federal</u>	<u>Total</u>
550 Printing and Binding				1,402.00
Total Other Purchased Services				\$1,402.00
Total 2370 Community Relations Services				\$1,402.00

General Fund (10)

2380 Office of the Principal Services

100 Personnel Services – Salaries

100 Personnel Services – Salaries

	Elementary	Secondary	Federal	Total
	268,323.95	431,995.85		700,319.80

Total Personnel Services – Salaries

\$268,323.95 \$431,995.85 \$700,319.80

200 Personnel Services – Employee Benefits

210 Group Insurance – Contracted Provider

220 Social Security Contributions

230 PSERS Retirement Contributions

250 Unemployment Compensation

260 Workers' Compensation

299 All Other Employee Benefits

Total Personnel Services – Employee Benefits

84,839.33	105,834.89		190,674.22
20,429.40	32,325.18		52,754.58
92,598.60	149,081.71		241,680.31
215.13	178.45		393.58
1,346.93	2,168.33		3,515.26
556.95	4,728.60		5,285.55

400 Purchased Property Services

430 Repairs and Maintenance Services

440 Rentals

Total Purchased Property Services

21,354.75	13,676.09		35,030.84
8,775.50	9,085.64		17,861.14

500 Other Purchased Services

530 Communications

580 Travel

Total Other Purchased Services

1,204.02	2,395.98		3,600.00
	17.00		17.00

600 Supplies

610 General Supplies

Total Supplies

8,099.33	18,166.17		26,265.50
----------	-----------	--	-----------

800 Other Objects

810 Dues and Fees

Total Other Objects

2.86	813.14		816.00
------	--------	--	--------

Total 2380 Office of the Principal Services

\$2.86	\$813.14		\$816.00
\$507,746.75	\$770,467.03		\$1,278,213.78

General Fund (10)				
2390 Other Administration Services				
100 <u>Personnel Services – Salaries</u>	<u>Elementary</u>	<u>Secondary</u>	<u>Federal</u>	<u>Total</u>
100 Personnel Services – Salaries				12,805.76
Total Personnel Services – Salaries				\$12,805.76
200 <u>Personnel Services – Employee Benefits</u>				
210 Group Insurance – Contracted Provider				32.80
Total Personnel Services – Employee Benefits				\$32.80
Total 2390 Other Administration Services				\$12,838.56

General Fund (10)					
2400 Support Services – Pupil Health		Elementary	Secondary	Federal	Total
100	<u>Personnel Services – Salaries</u>				
100	Personnel Services – Salaries				148,470.59
Total Personnel Services – Salaries					\$148,470.59
200	<u>Personnel Services – Employee Benefits</u>				
210	Group Insurance – Contracted Provider				66,687.00
220	Social Security Contributions				11,151.75
230	PSERS Retirement Contributions				49,353.40
250	Unemployment Compensation				303.67
260	Workers' Compensation				740.82
Total Personnel Services – Employee Benefits					\$128,236.64
300	<u>Purchased Professional and Technical Services</u>				
329	Professional Educational Services – Other				3,717.00
330	Other Professional Services				2,500.00
390	Other Purchased Professional and Technical Services				1,267.77
Total Purchased Professional and Technical Services					\$7,484.77
600	<u>Supplies</u>				
610	General Supplies				21,440.84
Total Supplies					\$21,440.84
Total 2400 Support Services – Pupil Health					\$305,632.84

General Fund (10)

2440 Nursing Services

100 Personnel Services – Salaries

100 Personnel Services – Salaries

Elementary

Secondary

Federal

Total

148,470.59

Total Personnel Services – Salaries

\$148,470.59

200 Personnel Services – Employee Benefits

210 Group Insurance – Contracted Provider

220 Social Security Contributions

230 PSERS Retirement Contributions

250 Unemployment Compensation

260 Workers' Compensation

66,687.00

11,151.75

49,353.40

303.67

740.82

Total Personnel Services – Employee Benefits

\$128,236.64

300 Purchased Professional and Technical Services

329 Professional Educational Services – Other

330 Other Professional Services

3,717.00

2,500.00

Total Purchased Professional and Technical Services

\$6,217.00

600 Supplies

610 General Supplies

21,440.84

Total Supplies

\$21,440.84

Total 2440 Nursing Services

\$304,365.07

General Fund (10)				
2490 Other Health Services				
300 <u>Purchased Professional and Technical Services</u>	<u>Elementary</u>	<u>Secondary</u>	<u>Federal</u>	<u>Total</u>
390 Other Purchased Professional and Technical Services				1,267.77
Total Purchased Professional and Technical Services				\$1,267.77
Total 2490 Other Health Services				\$1,267.77

General Fund (10)			
2500 Support Services – Business			
100 <u>Personnel Services – Salaries</u>	Elementary	Secondary	Federal
100 Personnel Services – Salaries			Total
			228,148.86
Total Personnel Services – Salaries			\$228,148.86
200 <u>Personnel Services – Employee Benefits</u>			
210 Group Insurance – Contracted Provider			106,774.28
220 Social Security Contributions			17,070.36
230 PSERS Retirement Contributions			77,891.96
250 Unemployment Compensation			107.54
260 Workers' Compensation			1,145.17
299 All Other Employee Benefits			5,014.57
Total Personnel Services – Employee Benefits			\$208,003.88
300 <u>Purchased Professional and Technical Services</u>			
330 Other Professional Services			6,200.00
Total Purchased Professional and Technical Services			\$6,200.00
400 <u>Purchased Property Services</u>			
430 Repairs and Maintenance Services			1,434.16
440 Rentals			1,624.81
Total Purchased Property Services			\$3,058.97
500 <u>Other Purchased Services</u>			
530 Communications			600.00
591 Services Purchased Locally			150.00
Total Other Purchased Services			\$750.00
600 <u>Supplies</u>			
610 General Supplies			8,120.37
650 Supplies & Fees – Technology Related			32,685.36
Total Supplies			\$40,805.73
800 <u>Other Objects</u>			
810 Dues and Fees			3,171.82
890 Miscellaneous Expenditures			2,666.36
Total Other Objects			\$5,838.18
Total 2500 Support Services – Business			\$492,805.62

General Fund (10)				
2510 Fiscal Services				
100	<u>Personnel Services – Salaries</u>			
100	Personnel Services – Salaries			228,148.86
Total Personnel Services – Salaries				\$228,148.86
200 <u>Personnel Services – Employee Benefits</u>				
210	Group Insurance – Contracted Provider			106,774.28
220	Social Security Contributions			17,070.36
230	PSERS Retirement Contributions			77,891.96
250	Unemployment Compensation			107.54
260	Workers' Compensation			1,145.17
299	All Other Employee Benefits			5,014.57
Total Personnel Services – Employee Benefits				\$208,003.88
400 <u>Purchased Property Services</u>				
430	Repairs and Maintenance Services			1,434.16
440	Rentals			1,624.81
Total Purchased Property Services				\$3,058.97
500 <u>Other Purchased Services</u>				
530	Communications			600.00
591	Services Purchased Locally			150.00
Total Other Purchased Services				\$750.00
600 <u>Supplies</u>				
610	General Supplies			8,120.37
650	Supplies & Fees – Technology Related			32,685.36
Total Supplies				\$40,805.73
800 <u>Other Objects</u>				
810	Dues and Fees			3,171.82
890	Miscellaneous Expenditures			2,666.36
Total Other Objects				\$5,838.18
Total 2510 Fiscal Services				\$486,605.62

Elementary

Secondary

Federal

Total

General Fund (10)						
2511 Supervision of Fiscal Services - Head of Component			Elementary	Secondary	Federal	Total
100 <u>Personnel Services – Salaries</u>						
100 Personnel Services – Salaries						119,592.87
Total Personnel Services – Salaries						\$119,592.87
200 <u>Personnel Services – Employee Benefits</u>						
210 Group Insurance – Contracted Provider						28,702.28
220 Social Security Contributions						9,126.20
230 PSERS Retirement Contributions						40,429.17
250 Unemployment Compensation						(11.63)
260 Workers' Compensation						600.35
299 All Other Employee Benefits						5,014.57
Total Personnel Services – Employee Benefits						\$83,860.94
400 <u>Purchased Property Services</u>						
430 Repairs and Maintenance Services						1,434.16
440 Rentals						1,624.81
Total Purchased Property Services						\$3,058.97
500 <u>Other Purchased Services</u>						
530 Communications						600.00
591 Services Purchased Locally						150.00
Total Other Purchased Services						\$750.00
600 <u>Supplies</u>						
610 General Supplies						7,640.36
650 Supplies & Fees – Technology Related						32,685.36
Total Supplies						\$40,325.72
800 <u>Other Objects</u>						
810 Dues and Fees						3,171.82
890 Miscellaneous Expenditures						2,666.36
Total Other Objects						\$5,838.18
Total 2511 Supervision of Fiscal Services - Head of Component						\$253,426.68

General Fund (10)

2513 Receiving and Disbursing Funds Services

100 Personnel Services – Salaries

Elementary

Secondary

Federal

Total

100 Personnel Services – Salaries

68,019.35

Total Personnel Services – Salaries

\$68,019.35

200 Personnel Services – Employee Benefits

210 Group Insurance – Contracted Provider

50,058.00

220 Social Security Contributions

5,014.52

230 PSERS Retirement Contributions

23,473.57

250 Unemployment Compensation

82.11

260 Workers' Compensation

341.37

Total Personnel Services – Employee Benefits

\$78,969.57

600 Supplies

610 General Supplies

222.81

Total Supplies

\$222.81

Total 2513 Receiving and Disbursing Funds Services

\$147,211.73

General Fund (10)

2514 Payroll Services

100 Personnel Services – Salaries

100 Personnel Services – Salaries

Elementary

Secondary

Federal

Total

40,536.64

Total Personnel Services – Salaries

\$40,536.64

200 Personnel Services – Employee Benefits

210 Group Insurance – Contracted Provider

220 Social Security Contributions

230 PSERS Retirement Contributions

250 Unemployment Compensation

260 Workers' Compensation

28,014.00

2,929.64

13,989.22

37.06

203.45

Total Personnel Services – Employee Benefits

\$45,173.37

600 Supplies

610 General Supplies

257.20

Total Supplies

\$257.20

Total 2514 Payroll Services

\$85,967.21

General Fund (10)				
2590 Other Support Services – Business				
300 <u>Purchased Professional and Technical Services</u>	<u>Elementary</u>	<u>Secondary</u>	<u>Federal</u>	<u>Total</u>
330 Other Professional Services				6,200.00
Total Purchased Professional and Technical Services				\$6,200.00
Total 2590 Other Support Services – Business				\$6,200.00

General Fund (10)					
2600 Operation and Maintenance of Plant Services		Elementary	Secondary	Federal	Total
100	<u>Personnel Services – Salaries</u>				
100	Personnel Services – Salaries				778,946.31
Total Personnel Services – Salaries					\$778,946.31
200	<u>Personnel Services – Employee Benefits</u>				
210	Group Insurance – Contracted Provider				456,330.83
220	Social Security Contributions				58,606.95
230	PSERS Retirement Contributions				233,842.79
250	Unemployment Compensation				1,232.28
260	Workers' Compensation				3,932.44
291	Other Retirement Plans				2,040.00
299	All Other Employee Benefits				1,200.00
Total Personnel Services – Employee Benefits					\$757,185.29
300	<u>Purchased Professional and Technical Services</u>				
350	Security / Safety Services				33,302.58
390	Other Purchased Professional and Technical Services				6,040.00
Total Purchased Professional and Technical Services					\$39,342.58
400	<u>Purchased Property Services</u>				
410	Cleaning Services				13,380.00
420	Utility Services				70,655.83
430	Repairs and Maintenance Services				39,694.86
460	Extermination Services				8,735.00
490	Other Purchased Property Services				15,954.40
Total Purchased Property Services					\$148,420.09
500	<u>Other Purchased Services</u>				
522	Automotive Liability Insurance				6,784.00
523	General Property and Liability Insurance				92,381.00
530	Communications				35,594.25
580	Travel				1,026.83
Total Other Purchased Services					\$135,786.08
600	<u>Supplies</u>				
610	General Supplies	41,475.32	346,805.90		388,281.22
620	Energy				501,649.36
Total Supplies		\$41,475.32	\$346,805.90		\$889,930.58
700	<u>Property</u>				
790	Other Property				12,288.79
Total Property					\$12,288.79
800	<u>Other Objects</u>				
810	Dues and Fees				114.29
Total Other Objects					\$114.29
Total 2600 Operation and Maintenance of Plant Services		\$41,475.32	\$346,805.90		\$2,762,014.01

General Fund (10)

2610 Supervision of Operation and Maintenance of Plant Services

100 Personnel Services – Salaries

Elementary

Secondary

Federal

Total

100 Personnel Services – Salaries

69,936.67

Total Personnel Services – Salaries

\$69,936.67

200 Personnel Services – Employee Benefits

210 Group Insurance – Contracted Provider

27,368.83

220 Social Security Contributions

5,277.17

230 PSERS Retirement Contributions

24,135.21

250 Unemployment Compensation

18.94

260 Workers' Compensation

351.12

299 All Other Employee Benefits

1,200.00

Total Personnel Services – Employee Benefits

\$58,351.27

500 Other Purchased Services

580 Travel

1,026.83

Total Other Purchased Services

\$1,026.83

800 Other Objects

810 Dues and Fees

114.29

Total Other Objects

\$114.29

Total 2610 Supervision of Operation and Maintenance of Plant Services

\$129,429.06

General Fund (10)

2611 Supervision of Operation and Maintenance of Plant Services – Head of Component

100 Personnel Services – Salaries

Elementary

Secondary

Federal

Total

100 Personnel Services – Salaries

69,936.67

Total Personnel Services – Salaries

\$69,936.67

200 Personnel Services – Employee Benefits

210 Group Insurance – Contracted Provider

27,368.83

220 Social Security Contributions

5,277.17

230 PSERS Retirement Contributions

24,135.21

250 Unemployment Compensation

18.94

260 Workers' Compensation

351.12

299 All Other Employee Benefits

1,200.00

Total Personnel Services – Employee Benefits

\$58,351.27

500 Other Purchased Services

580 Travel

1,026.83

Total Other Purchased Services

\$1,026.83

800 Other Objects

810 Dues and Fees

114.29

Total Other Objects

\$114.29

Total 2611 Supervision of Operation and Maintenance of Plant Services – Head of Component

\$129,429.06

General Fund (10)			
2620 Operation of Buildings Services			
100 <u>Personnel Services – Salaries</u>			
100 Personnel Services – Salaries			618,083.76
Total Personnel Services – Salaries			
\$618,083.76			
200 <u>Personnel Services – Employee Benefits</u>			
210 Group Insurance – Contracted Provider			428,962.00
220 Social Security Contributions			46,373.93
230 PSERS Retirement Contributions			209,707.58
250 Unemployment Compensation			1,027.36
260 Workers' Compensation			3,181.22
291 Other Retirement Plans			2,040.00
Total Personnel Services – Employee Benefits			
\$691,292.09			
300 <u>Purchased Professional and Technical Services</u>			
350 Security / Safety Services			18,702.58
390 Other Purchased Professional and Technical Services			6,040.00
Total Purchased Professional and Technical Services			
\$24,742.58			
400 <u>Purchased Property Services</u>			
410 Cleaning Services			13,380.00
420 Utility Services			70,655.83
430 Repairs and Maintenance Services			31,781.97
460 Extermination Services			8,735.00
490 Other Purchased Property Services			15,954.40
Total Purchased Property Services			
\$140,507.20			
500 <u>Other Purchased Services</u>			
522 Automotive Liability Insurance			6,784.00
523 General Property and Liability Insurance			92,381.00
530 Communications			34,694.25
Total Other Purchased Services			
\$133,859.25			
600 <u>Supplies</u>			
610 General Supplies	41,467.70	345,289.64	386,757.34
620 Energy			495,694.41
Total Supplies			
\$41,467.70 \$345,289.64 \$882,451.75			
700 <u>Property</u>			
790 Other Property			7,931.15
Total Property			
\$7,931.15			
Total 2620 Operation of Buildings Services			
\$41,467.70 \$345,289.64 \$2,498,867.78			

General Fund (10)				
2630 Care and Upkeep of Grounds Services				
700 <u>Property</u>	<u>Elementary</u>	<u>Secondary</u>	<u>Federal</u>	<u>Total</u>
790 Other Property				4,357.64
Total Property				\$4,357.64
Total 2630 Care and Upkeep of Grounds Services				\$4,357.64

General Fund (10)

2650 Vehicle Operation and Maintenance Services (Other Than Student Transportation Vehicles)

Elementary

Secondary

Federal

Total

400 Purchased Property Services

430 Repairs and Maintenance Services

7,912.89

Total Purchased Property Services

\$7,912.89

600 Supplies

610 General Supplies

7.49

1,491.20

1,498.69

620 Energy

5,954.95

Total Supplies

\$7.49

\$1,491.20

\$7,453.64

Total 2650 Vehicle Operation and Maintenance Services (Other Than Student Transportation Vehicles)

\$7.49

\$1,491.20

\$15,366.53

General Fund (10)				
2660 Safety and Security Services				
100 <u>Personnel Services – Salaries</u>				
100 Personnel Services – Salaries				90,925.88
Total Personnel Services – Salaries				\$90,925.88
200 <u>Personnel Services – Employee Benefits</u>				
220 Social Security Contributions				6,955.85
250 Unemployment Compensation				185.98
260 Workers' Compensation				400.10
Total Personnel Services – Employee Benefits				\$7,541.93
300 <u>Purchased Professional and Technical Services</u>				
350 Security / Safety Services				14,600.00
Total Purchased Professional and Technical Services				\$14,600.00
500 <u>Other Purchased Services</u>				
530 Communications				900.00
Total Other Purchased Services				\$900.00
600 <u>Supplies</u>				
610 General Supplies				25.19
Total Supplies				\$25.19
Total 2660 Safety and Security Services				\$113,993.00

Elementary

Secondary

Federal

Total

General Fund (10)				
	Elementary	Secondary	Federal	Total
2700 Student Transportation Services				
100 Personnel Services – Salaries				
100 Personnel Services – Salaries			14,046.79	88,022.86
Total Personnel Services – Salaries			\$14,046.79	\$88,022.86
200 Personnel Services – Employee Benefits				
210 Group Insurance – Contracted Provider				11,070.12
220 Social Security Contributions			1,052.46	6,605.46
230 PSERS Retirement Contributions			4,850.51	30,170.52
250 Unemployment Compensation			83.73	136.92
260 Workers' Compensation			77.97	449.31
Total Personnel Services – Employee Benefits			\$6,064.67	\$48,432.33
300 Purchased Professional and Technical Services				
329 Professional Educational Services – Other			4,837.20	4,837.20
Total Purchased Professional and Technical Services			\$4,837.20	\$4,837.20
400 Purchased Property Services				
420 Utility Services				1,881.28
430 Repairs and Maintenance Services				928.54
Total Purchased Property Services				\$2,809.82
500 Other Purchased Services				
513 Contracted Carriers				1,631,506.47
516 Student Transportation Services From the IU				33,938.31
Total Other Purchased Services				\$1,665,444.78
600 Supplies				
620 Energy				7,489.15
650 Supplies & Fees – Technology Related				17,950.00
Total Supplies				\$25,439.15
800 Other Objects				
810 Dues and Fees				250.00
Total Other Objects				\$250.00
Total 2700 Student Transportation Services			\$24,948.66	\$1,835,236.14

General Fund (10)

2710 Supervision of Student Transportation Services

100 Personnel Services – Salaries

Elementary

Secondary

Federal

Total

100 Personnel Services – Salaries

60,273.62

Total Personnel Services – Salaries

\$60,273.62

200 Personnel Services – Employee Benefits

210 Group Insurance – Contracted Provider

11,070.12

220 Social Security Contributions

4,518.22

230 PSERS Retirement Contributions

20,800.23

250 Unemployment Compensation

24.87

260 Workers' Compensation

302.51

Total Personnel Services – Employee Benefits

\$36,715.95

800 Other Objects

810 Dues and Fees

250.00

Total Other Objects

\$250.00

Total 2710 Supervision of Student Transportation Services

\$97,239.57

General Fund (10)

2711 Supervision of Student Transportation Services – Head of Component

Elementary

Secondary

Federal

Total

100 Personnel Services – Salaries

100 Personnel Services – Salaries

60,273.62

Total Personnel Services – Salaries

\$60,273.62

200 Personnel Services – Employee Benefits

210 Group Insurance – Contracted Provider

11,070.12

220 Social Security Contributions

4,518.22

230 PSERS Retirement Contributions

20,800.23

250 Unemployment Compensation

24.87

260 Workers' Compensation

302.51

Total Personnel Services – Employee Benefits

\$36,715.95

800 Other Objects

810 Dues and Fees

250.00

Total Other Objects

\$250.00

Total 2711 Supervision of Student Transportation Services – Head of Component

\$97,239.57

General Fund (10)				
2720 Vehicle Operation Services				
400 <u>Purchased Property Services</u>				
420 Utility Services				1,881.28
430 Repairs and Maintenance Services				928.54
Total Purchased Property Services				\$2,809.82
500 <u>Other Purchased Services</u>				
513 Contracted Carriers				1,484,670.88
516 Student Transportation Services From the IU				33,938.31
Total Other Purchased Services				\$1,518,609.19
600 <u>Supplies</u>				
620 Energy				7,489.15
650 Supplies & Fees – Technology Related				17,950.00
Total Supplies				\$25,439.15
Total 2720 Vehicle Operation Services				\$1,546,858.16

General Fund (10)				
2730 Monitoring Services				
	Elementary	Secondary	Federal	Total
100 <u>Personnel Services – Salaries</u>				
100 Personnel Services – Salaries			14,046.79	27,749.24
Total Personnel Services – Salaries			\$14,046.79	\$27,749.24
200 <u>Personnel Services – Employee Benefits</u>				
220 Social Security Contributions			1,052.46	2,087.24
230 PSERS Retirement Contributions			4,850.51	9,370.29
250 Unemployment Compensation			83.73	112.05
260 Workers' Compensation			77.97	146.80
Total Personnel Services – Employee Benefits			\$6,064.67	\$11,716.38
300 <u>Purchased Professional and Technical Services</u>				
329 Professional Educational Services – Other			4,837.20	4,837.20
Total Purchased Professional and Technical Services			\$4,837.20	\$4,837.20
Total 2730 Monitoring Services			\$24,948.66	\$44,302.82

General Fund (10)				
2750 Nonpublic Transportation				
500 <u>Other Purchased Services</u>	<u>Elementary</u>	<u>Secondary</u>	<u>Federal</u>	<u>Total</u>
513 Contracted Carriers				146,835.59
Total Other Purchased Services				\$146,835.59
Total 2750 Nonpublic Transportation				\$146,835.59

General Fund (10)			
2800 Support Services – Central			
100 <u>Personnel Services – Salaries</u>	Elementary	Secondary	Federal
100 Personnel Services – Salaries			Total
			267,738.75
Total Personnel Services – Salaries			\$267,738.75
200 <u>Personnel Services – Employee Benefits</u>			
210 Group Insurance – Contracted Provider			137,999.95
220 Social Security Contributions			20,002.00
230 PSERS Retirement Contributions			92,330.73
240 Tuition Reimbursement			3,507.20
250 Unemployment Compensation			152.70
260 Workers' Compensation			1,342.57
299 All Other Employee Benefits			1,080.53
Total Personnel Services – Employee Benefits			\$256,415.68
300 <u>Purchased Professional and Technical Services</u>			
322 Professional Educational Services – Ius			632.10
340 Technical Services			1,554.95
360 Employee Training and Development Services			5,269.30
390 Other Purchased Professional and Technical Services			4,200.00
Total Purchased Professional and Technical Services			\$11,656.35
400 <u>Purchased Property Services</u>			
430 Repairs and Maintenance Services			239.00
Total Purchased Property Services			\$239.00
500 <u>Other Purchased Services</u>			
530 Communications			18,938.71
580 Travel			772.69
Total Other Purchased Services			\$19,711.40
600 <u>Supplies</u>			
610 General Supplies			289,844.50
650 Supplies & Fees – Technology Related			1,028,825.48
			365,635.84
Total Supplies			\$289,844.50
			\$1,394,461.32
700 <u>Property</u>			
758 Capitalized Technology Software - Original			24,350.90
766 Capitalized Technology Equipment– Replacement			37,880.45
Total Property			\$62,231.35
800 <u>Other Objects</u>			
810 Dues and Fees			194.29
890 Miscellaneous Expenditures			1,729.40
Total Other Objects			\$1,923.69
Total 2800 Support Services – Central			\$289,844.50
			\$2,014,377.54

General Fund (10)			
2820 Information Services			
100 <u>Personnel Services – Salaries</u>			
100 Personnel Services – Salaries			265,828.74
Total Personnel Services – Salaries			
			\$265,828.74
200 <u>Personnel Services – Employee Benefits</u>			
210 Group Insurance – Contracted Provider			137,999.95
220 Social Security Contributions			19,857.70
230 PSERS Retirement Contributions			91,737.64
250 Unemployment Compensation			142.43
260 Workers' Compensation			1,334.16
299 All Other Employee Benefits			1,080.53
Total Personnel Services – Employee Benefits			
			\$252,152.41
300 <u>Purchased Professional and Technical Services</u>			
340 Technical Services			1,554.95
390 Other Purchased Professional and Technical Services			4,200.00
Total Purchased Professional and Technical Services			
			\$5,754.95
400 <u>Purchased Property Services</u>			
430 Repairs and Maintenance Services			239.00
Total Purchased Property Services			
			\$239.00
500 <u>Other Purchased Services</u>			
530 Communications			18,938.71
580 Travel			559.57
Total Other Purchased Services			
			\$19,498.28
600 <u>Supplies</u>			
610 General Supplies		289,844.50	1,027,666.04
650 Supplies & Fees – Technology Related			365,635.84
Total Supplies			
			\$289,844.50
			\$1,393,301.88
700 <u>Property</u>			
758 Capitalized Technology Software - Original			24,350.90
766 Capitalized Technology Equipment – Replacement			37,880.45
Total Property			
			\$62,231.35
800 <u>Other Objects</u>			
810 Dues and Fees			194.29
Total Other Objects			
			\$194.29
Total 2820 Information Services			
			\$289,844.50
			\$1,999,200.90

Elementary

Secondary

Federal

Total

General Fund (10)						
2821 Supervision of Information Services			Elementary	Secondary	Federal	Total
100 <u>Personnel Services – Salaries</u>						
100 Personnel Services – Salaries						98,908.41
Total Personnel Services – Salaries						\$98,908.41
200 <u>Personnel Services – Employee Benefits</u>						
210 Group Insurance – Contracted Provider						27,605.95
220 Social Security Contributions						7,415.32
230 PSERS Retirement Contributions						34,133.32
250 Unemployment Compensation						1.10
260 Workers' Compensation						496.47
299 All Other Employee Benefits						1,080.53
Total Personnel Services – Employee Benefits						\$70,732.69
500 <u>Other Purchased Services</u>						
530 Communications						600.00
Total Other Purchased Services						\$600.00
600 <u>Supplies</u>						
610 General Supplies						92.94
650 Supplies & Fees – Technology Related						8,650.00
Total Supplies						\$8,742.94
800 <u>Other Objects</u>						
810 Dues and Fees						194.29
Total Other Objects						\$194.29
Total 2821 Supervision of Information Services						\$179,178.33

General Fund (10)			
2822 Internal Information Services			
100 <u>Personnel Services – Salaries</u>	Elementary	Secondary	Federal
100 Personnel Services – Salaries			Total
			166,920.33
Total Personnel Services – Salaries			
			\$166,920.33
200 <u>Personnel Services – Employee Benefits</u>			
210 Group Insurance – Contracted Provider			110,394.00
220 Social Security Contributions			12,442.38
230 PSERS Retirement Contributions			57,604.32
250 Unemployment Compensation			141.33
260 Workers' Compensation			837.69
Total Personnel Services – Employee Benefits			
			\$181,419.72
300 <u>Purchased Professional and Technical Services</u>			
340 Technical Services			1,554.95
390 Other Purchased Professional and Technical Services			4,200.00
Total Purchased Professional and Technical Services			
			\$5,754.95
400 <u>Purchased Property Services</u>			
430 Repairs and Maintenance Services			239.00
Total Purchased Property Services			
			\$239.00
500 <u>Other Purchased Services</u>			
530 Communications			18,338.71
580 Travel			559.57
Total Other Purchased Services			
			\$18,898.28
600 <u>Supplies</u>			
610 General Supplies			289,844.50
650 Supplies & Fees – Technology Related			1,027,573.10
Total Supplies			
			\$289,844.50
			\$1,384,558.94
700 <u>Property</u>			
758 Capitalized Technology Software - Original			24,350.90
766 Capitalized Technology Equipment – Replacement			37,880.45
Total Property			
			\$62,231.35
Total 2822 Internal Information Services			
			\$289,844.50
			\$1,820,022.57

General Fund (10)					
2830 Staff Services					
100 <u>Personnel Services – Salaries</u>					
100	Personnel Services – Salaries	Elementary	Secondary	Federal	Total
					1,910.01
Total Personnel Services – Salaries					\$1,910.01
200 <u>Personnel Services – Employee Benefits</u>					
220	Social Security Contributions				144.30
230	PSERS Retirement Contributions				593.09
240	Tuition Reimbursement				3,507.20
250	Unemployment Compensation				10.27
260	Workers' Compensation				8.41
Total Personnel Services – Employee Benefits					\$4,263.27
300 <u>Purchased Professional and Technical Services</u>					
360	Employee Training and Development Services				5,269.30
Total Purchased Professional and Technical Services					\$5,269.30
500 <u>Other Purchased Services</u>					
580	Travel				213.12
Total Other Purchased Services					\$213.12
600 <u>Supplies</u>					
610	General Supplies				1,159.44
Total Supplies					\$1,159.44
800 <u>Other Objects</u>					
890	Miscellaneous Expenditures				1,729.40
Total Other Objects					\$1,729.40
Total 2830 Staff Services					\$14,544.54

General Fund (10)					
2834 Staff Development Services – Non-Instructional, Certified Staff Only					
300	<u>Purchased Professional and Technical Services</u>	<u>Elementary</u>	<u>Secondary</u>	<u>Federal</u>	<u>Total</u>
360	Employee Training and Development Services				4,475.30
Total Purchased Professional and Technical Services					\$4,475.30
500	<u>Other Purchased Services</u>				
580	Travel				213.12
Total Other Purchased Services					\$213.12
Total 2834 Staff Development Services – Non-Instructional, Certified Staff Only					\$4,688.42

General Fund (10)					
2836 Staff Development Services – Non-Instructional, Non-Certified Staff Only					
200	<u>Personnel Services – Employee Benefits</u>	<u>Elementary</u>	<u>Secondary</u>	<u>Federal</u>	<u>Total</u>
240	Tuition Reimbursement				3,507.20
Total Personnel Services – Employee Benefits					
300	<u>Purchased Professional and Technical Services</u>				
360	Employee Training and Development Services				794.00
Total Purchased Professional and Technical Services					
Total 2836 Staff Development Services – Non-Instructional, Non-Certified Staff Only					
					\$794.00
					\$4,301.20

General Fund (10)				
2839 Other Staff Services				
100 <u>Personnel Services – Salaries</u>				
100 Personnel Services – Salaries				1,910.01
Total Personnel Services – Salaries				\$1,910.01
200 <u>Personnel Services – Employee Benefits</u>				
220 Social Security Contributions				144.30
230 PSERS Retirement Contributions				593.09
250 Unemployment Compensation				10.27
260 Workers' Compensation				8.41
Total Personnel Services – Employee Benefits				\$756.07
600 <u>Supplies</u>				
610 General Supplies				1,159.44
Total Supplies				\$1,159.44
800 <u>Other Objects</u>				
890 Miscellaneous Expenditures				1,729.40
Total Other Objects				\$1,729.40
Total 2839 Other Staff Services				\$5,554.92

Elementary

Secondary

Federal

Total

General Fund (10)				
2860 Management Services				
300 <u>Purchased Professional and Technical Services</u>	<u>Elementary</u>	<u>Secondary</u>	<u>Federal</u>	<u>Total</u>
322 Professional Educational Services — lvs				632.10
Total Purchased Professional and Technical Services				\$632.10
Total 2860 Management Services				\$632.10

General Fund (10)		
3000 Operation of Non-Instructional Services		
100 <u>Personnel Services – Salaries</u>		<u>Total</u>
100 Personnel Services – Salaries	241,399.17	
Total Personnel Services – Salaries	\$241,399.17	
200 <u>Personnel Services – Employee Benefits</u>		
220 Social Security Contributions	18,416.69	
230 PSERS Retirement Contributions	41,793.40	
250 Unemployment Compensation	797.78	
260 Workers' Compensation	1,062.01	
Total Personnel Services – Employee Benefits	\$62,069.88	
300 <u>Purchased Professional and Technical Services</u>		
330 Other Professional Services	34,206.02	
390 Other Purchased Professional and Technical Services	31,041.00	
Total Purchased Professional and Technical Services	\$65,247.02	
400 <u>Purchased Property Services</u>		
430 Repairs and Maintenance Services	434.00	
Total Purchased Property Services	\$434.00	
500 <u>Other Purchased Services</u>		
510 Student Transportation Services	29,779.63	
520 Insurance – General	13,302.00	
580 Travel	691.48	
Total Other Purchased Services	\$43,773.11	
600 <u>Supplies</u>		
610 General Supplies	89,327.69	
650 Supplies & Fees – Technology Related	125.00	
Total Supplies	\$89,452.69	
800 <u>Other Objects</u>		
810 Dues and Fees	80.00	
890 Miscellaneous Expenditures	3,240.00	
Total Other Objects	\$3,320.00	
Total 3000 Operation of Non-Instructional Services	\$505,695.87	

General Fund (10)					
3200 Student Activities		Elementary	Secondary	Federal	Total
100	<u>Personnel Services – Salaries</u>				
100	Personnel Services – Salaries				241,399.17
Total Personnel Services – Salaries					\$241,399.17
200	<u>Personnel Services – Employee Benefits</u>				
220	Social Security Contributions				18,416.69
230	PSERS Retirement Contributions				41,793.40
250	Unemployment Compensation				797.78
260	Workers' Compensation				1,062.01
Total Personnel Services – Employee Benefits					\$62,069.88
300	<u>Purchased Professional and Technical Services</u>				
330	Other Professional Services				34,206.02
390	Other Purchased Professional and Technical Services				31,041.00
Total Purchased Professional and Technical Services					\$65,247.02
400	<u>Purchased Property Services</u>				
430	Repairs and Maintenance Services				434.00
Total Purchased Property Services					\$434.00
500	<u>Other Purchased Services</u>				
510	Student Transportation Services				29,779.63
520	Insurance – General				13,302.00
580	Travel				691.48
Total Other Purchased Services					\$43,773.11
600	<u>Supplies</u>				
610	General Supplies				83,282.20
650	Supplies & Fees – Technology Related				125.00
Total Supplies					\$83,407.20
800	<u>Other Objects</u>				
810	Dues and Fees				80.00
890	Miscellaneous Expenditures				3,240.00
Total Other Objects					\$3,320.00
Total 3200 Student Activities					\$499,650.38

General Fund (10)				
3300 Community Services				
600 <u>Supplies</u>	<u>Elementary</u>	<u>Secondary</u>	<u>Federal</u>	<u>Total</u>
610 General Supplies			6,045.49	6,045.49
Total Supplies			\$6,045.49	\$6,045.49
Total 3300 Community Services			\$6,045.49	\$6,045.49

General Fund (10)

4000 Facilities Acquisition, Construction and Improvement Services

400 Purchased Property Services

450 Construction Services

302,500.00

Total Purchased Property Services

\$302,500.00

Total 4000 Facilities Acquisition, Construction and Improvement Services

\$302,500.00

General Fund (10)

4600 Existing Building Improvement Services

400 Purchased Property Services

450 Construction Services

Elementary

Secondary

Federal

Total

302,500.00

Total Purchased Property Services

\$302,500.00

Total 4600 Existing Building Improvement Services

\$302,500.00

General Fund (10)

5000 Other Expenditures and Financing Uses

800 Other Objects

830 Interest

Total

987,574.67

Total Other Objects

\$987,574.67

900 Other Uses of Funds

910 Redemption of Principal

932 Capital Reserve Fund Transfers Applicable To Fund 32

939 Other Fund Transfers

800,000.00

315,246.00

147,376.00

Total Other Uses of Funds

\$1,262,622.00

Total 5000 Other Expenditures and Financing Uses

\$2,250,196.67

General Fund (10)				
5100 Debt Service / Other Expenditures and Financing Uses				
800 <u>Other Objects</u>				
830 Interest				987,574.67
Total Other Objects				\$987,574.67
900 <u>Other Uses of Funds</u>				
910 Redemption of Principal				800,000.00
Total Other Uses of Funds				\$800,000.00
Total 5100 Debt Service / Other Expenditures and Financing Uses				\$1,787,574.67

General Fund (10)				
5110 Debt Service				
800 <u>Other Objects</u>				
830 Interest				987,574.67
Total Other Objects				\$987,574.67
900 <u>Other Uses of Funds</u>				
910 Redemption of Principal				800,000.00
Total Other Uses of Funds				\$800,000.00
Total 5110 Debt Service				\$1,787,574.67

General Fund (10)				
5200 Interfund Transfers – Out				
900 <u>Other Uses of Funds</u>	<u>Elementary</u>	<u>Secondary</u>	<u>Federal</u>	<u>Total</u>
932 Capital Reserve Fund Transfers Applicable To Fund 32				315,246.00
939 Other Fund Transfers				147,376.00
Total Other Uses of Funds				\$462,622.00
Total 5200 Interfund Transfers – Out				\$462,622.00

General Fund (10)

5230 Capital Projects Fund Transfers

900 Other Uses of Funds

Elementary

Secondary

Federal

Total

932 Capital Reserve Fund Transfers Applicable To Fund 32

315,246.00

Total Other Uses of Funds

\$315,246.00

Total 5230 Capital Projects Fund Transfers

\$315,246.00

General Fund (10)

5250 Enterprise Fund Transfers

900 Other Uses of Funds

939 Other Fund Transfers

Elementary

Secondary

Federal

Total

147,376.00

Total Other Uses of Funds

\$147,376.00

Total 5250 Enterprise Fund Transfers

\$147,376.00

Student Sponsored Activity Fund (21)

3200 Student Activities

600 Supplies

Elementary

Secondary

Federal

Total

610 General Supplies

139,731.40

650 Supplies & Fees — Technology Related

896.64

Total Supplies

\$140,628.04

Total 3200 Student Activities

\$140,628.04

Capital Reserve Fund - \$ 1431 (32)	
2000 Support Services	
600 Supplies	
650 Supplies & Fees – Technology Related	50,309.84
Total Supplies	\$50,309.84
Total 2000 Support Services	\$50,309.84

Capital Reserve Fund - \$ 1431 (32)

2600 Operation and Maintenance of Plant Services

600 Supplies

Elementary

Secondary

Federal

Total

650 Supplies & Fees – Technology Related

50,309.84

Total Supplies

\$50,309.84

Total 2600 Operation and Maintenance of Plant Services

\$50,309.84

Capital Reserve Fund - \$ 1431 (32)				
2640 Care and Upkeep of Equipment Services				
600 <u>Supplies</u>	<u>Elementary</u>	<u>Secondary</u>	<u>Federal</u>	<u>Total</u>
650 Supplies & Fees – Technology Related				50,309.84
Total Supplies				\$50,309.84
Total 2640 Care and Upkeep of Equipment Services				\$50,309.84

Capital Reserve Fund - \$ 1431 (32)

4000 Facilities Acquisition, Construction and Improvement Services

400 Purchased Property Services

430 Repairs and Maintenance Services

Total Purchased Property Services

Total 4000 Facilities Acquisition, Construction and Improvement Services

Total	434,834.00
	\$434,834.00
	\$434,834.00

Capital Reserve Fund - \$ 1431 (32)

4200 Existing Site Improvement Services

400 Purchased Property Services

430 Repairs and Maintenance Services

Elementary

Secondary

Federal

Total

434,834.00

Total Purchased Property Services

\$434,834.00

Total 4200 Existing Site Improvement Services

\$434,834.00

Other Capital Projects Fund (39)

4000 Facilities Acquisition, Construction and Improvement Services

Total

400 Purchased Property Services

450 Construction Services

8,613,811.10

Total Purchased Property Services

\$8,613,811.10

Total 4000 Facilities Acquisition, Construction and Improvement Services

\$8,613,811.10

Other Capital Projects Fund (39)

4600 Existing Building Improvement Services

400 Purchased Property Services

450 Construction Services

Elementary

Secondary

Federal

Total

8,613,811.10

Total Purchased Property Services

\$8,613,811.10

Total 4600 Existing Building Improvement Services

\$8,613,811.10

Other Capital Projects Fund (39)

5000 Other Expenditures and Financing Uses

900 Other Uses of Funds

939 Other Fund Transfers

Total

115,246.00

Total Other Uses of Funds

\$115,246.00

Total 5000 Other Expenditures and Financing Uses

\$115,246.00

Other Capital Projects Fund (39)

5200 Interfund Transfers – Out

900 Other Uses of Funds

939 Other Fund Transfers

Elementary

Secondary

Federal

Total

115,246.00

Total Other Uses of Funds

\$115,246.00

Total 5200 Interfund Transfers – Out

\$115,246.00

Other Capital Projects Fund (39)

5210 General Fund Transfers

900 Other Uses of Funds

939 Other Fund Transfers

Elementary

Secondary

Federal

Total

115,246.00

Total Other Uses of Funds

\$115,246.00

Total 5210 General Fund Transfers

\$115,246.00

	<u>General Fund(10)</u>	<u>Student Sponsored Activity Fund(21)</u>	<u>Public Purpose Trust(27)</u>	<u>Other Compt Approved (28)</u>	<u>Athletic / Activity(29)</u>
1000 Instruction					
1100 Regular Programs - Elementary / Secondary	14,823,947.98				
1200 Special Programs - Elementary / Secondary	4,293,052.90				
1300 Vocational Education	1,648,233.71				
1400 Other Instructional Programs - Elementary / Secondary	129,633.65				
1600 Adult Education Programs	1,299.51				
Total Instruction	\$20,896,167.75				
2000 Support Services					
2100 Support Services - Students	1,163,098.73				
2200 Support Services - Instructional Staff	808,030.38				
2300 Support Services - Administration	1,720,390.59				
2400 Support Services - Pupil Health	305,632.84				
2500 Support Services - Business	492,805.62				
2600 Operation and Maintenance of Plant Services	2,762,014.01				
2700 Student Transportation Services	1,835,236.14				
2800 Support Services - Central	2,014,377.54				
Total Support Services	\$11,101,585.85				
3000 Operation of Non-Instructional Services					
3200 Student Activities	499,650.38	140,628.04			
3300 Community Services	6,045.49				
Total Operation of Non-Instructional Services	\$505,695.87	\$140,628.04			
4000 Facilities Acquisition, Construction and Improvement Services					
4200 Existing Site Improvement Services					
4600 Existing Building Improvement Services	302,500.00				
Total Facilities Acquisition, Construction and Improvement Services	\$302,500.00				
5000 Other Expenditures and Financing Uses					
5100 Debt Service / Other Expenditures and Financing Uses	1,787,574.67				
5200 Interfund Transfers - Out	462,622.00				
Total Other Expenditures and Financing Uses	\$2,250,196.67				
TOTAL ACTUAL EXPENDITURES & OTHER FINANCING USES	\$35,056,146.14	\$140,628.04			

	<u>Capital Reserve (690. Capital Reserve (1431)(32)</u>	<u>Other Capital Projects Fund(39)</u>	<u>Debt Service(40)</u>	<u>Permanent(90)</u>
1000 Instruction				
1100 Regular Programs - Elementary / Secondary				
1200 Special Programs - Elementary / Secondary				
1300 Vocational Education				
1400 Other Instructional Programs - Elementary / Secondary				
1600 Adult Education Programs				
Total Instruction				
2000 Support Services				
2100 Support Services - Students				
2200 Support Services - Instructional Staff				
2300 Support Services - Administration				
2400 Support Services - Pupil Health				
2500 Support Services - Business				
2600 Operation and Maintenance of Plant Services				
2700 Student Transportation Services				
2800 Support Services - Central				
Total Support Services	\$50,309.84			
3000 Operation of Non-Instructional Services				
3200 Student Activities				
3300 Community Services				
Total Operation of Non-Instructional Services				
4000 Facilities Acquisition, Construction and Improvement Services				
4200 Existing Site Improvement Services	434,834.00			
4600 Existing Building Improvement Services		8,613,811.10		
Total Facilities Acquisition, Construction and Improvement Services	\$434,834.00	\$8,613,811.10		
5000 Other Expenditures and Financing Uses				
5100 Debt Service / Other Expenditures and Financing Uses				
5200 Interfund Transfers - Out		115,246.00		
Total Other Expenditures and Financing Uses		\$115,246.00		
TOTAL ACTUAL EXPENDITURES & OTHER FINANCING USES	\$485,143.84	\$8,729,057.10		

		<u>Total</u>
1000 Instruction		
1100 Regular Programs - Elementary / Secondary		14,823,947.98
1200 Special Programs - Elementary / Secondary		4,293,052.90
1300 Vocational Education		1,648,233.71
1400 Other Instructional Programs - Elementary / Secondary		129,633.65
1600 Adult Education Programs		1,299.51
Total Instruction		\$20,896,167.75
2000 Support Services		
2100 Support Services - Students		1,163,098.73
2200 Support Services - Instructional Staff		808,030.38
2300 Support Services - Administration		1,720,390.59
2400 Support Services - Pupil Health		305,632.84
2500 Support Services - Business		492,805.62
2600 Operation and Maintenance of Plant Services		2,812,323.85
2700 Student Transportation Services		1,835,236.14
2800 Support Services - Central		2,014,377.54
Total Support Services		\$11,151,895.69
3000 Operation of Non-Instructional Services		
3200 Student Activities		640,278.42
3300 Community Services		6,045.49
Total Operation of Non-Instructional Services		\$646,323.91
4000 Facilities Acquisition, Construction and Improvement Services		
4200 Existing Site Improvement Services		434,834.00
4600 Existing Building Improvement Services		8,916,311.10
Total Facilities Acquisition, Construction and Improvement Services		\$9,351,145.10
5000 Other Expenditures and Financing Uses		
5100 Debt Service / Other Expenditures and Financing Uses		1,787,574.67
5200 Interfund Transfers - Out		577,868.00
Total Other Expenditures and Financing Uses		\$2,365,442.67
TOTAL ACTUAL EXPENDITURES & OTHER FINANCING USES		\$44,410,975.12

PSERS Salary Data (Salary Data should relate to the General Fund only)

Amount Description	Amount
Total Salary Base for salaries subject to PSERS withholding	12,971,341.84
Total Federally Funded salaries subject to PSERS withholding	646,759.47

Title I Expenditure Data

Amount Description	Amount
Expenditures Funded with Current Title I Funds	548,284.85
Expenditures Funded with Carry over Title I Funds	
Total Title I Expenditure Data	\$548,284.85

Title IV Revenue Data

Amount Description	Amount
Revenue from Title IV-A-1: Student Support and Academic Enrichment Grants	34,968.00
Revenue from Title IV-B: 21st Century Community Learning Centers	

Title V Revenue Data

Amount Description	Amount
Revenue from Title V-B-2: Rural and Low-Income School Programs	
Revenue from Title V-B-1: Small Rural School Achievement (Directly from the Federal Govt)	

1.	<u>Current Special Education Expenditures/Expenses within Functions 1000, 2000, 3100, and 3200</u>	5,366,427.18
2.	<u>Current Special Education Expenditures for Instruction Functions 1000 and 3200</u>	4,215,878.06
3.	<u>Current Special Education Expenditures for Pupil Support Services Function 2100</u>	552,753.57
4.	<u>Current Special Education Expenditures for Instructional Staff Support Services Function 2200</u>	290,353.16
5.	<u>Current Special Education Expenditures for Student Transportation Support Services Function 2700</u>	259,094.29

Note: Do not report total Special Education expenditures for the functions listed above. Refer to the AFR User Manual for specific instructions on Funds/Functions/Objects to be included and excluded on each line.

Benefits for Staff Relative to Collective
Bargaining Agreements

	OBJECT	COVERED	NOT COVERED	TOTAL
10 General Fund	No Self Insurance data to report			
	211 Medical Insurance	2,815,875.18	1,054,810.00	3,870,685.18
	212 Dental Insurance	86,387.00	29,694.00	116,081.00
	215 Eye Care Insurance			
	216 Prescription Insurance			
	271 Self-Insurance Medical Benefits			
	272 Self-Insurance Dental Benefits			
	275 Self-Insurance Eye Care Benefits			
	276 Self-Insurance Prescription Benefits			
	FUND TOTAL	\$2,902,262.18	\$1,084,504.00	\$3,986,766.18
50 Enterprise Fund	No Self Insurance data to report			
	211 Medical Insurance		20,976.00	20,976.00
	212 Dental Insurance		588.00	588.00
	215 Eye Care Insurance			
	216 Prescription Insurance			
	271 Self-Insurance Medical Benefits			
	272 Self-Insurance Dental Benefits			
	275 Self-Insurance Eye Care Benefits			
	276 Self-Insurance Prescription Benefits			
	FUND TOTAL		\$21,564.00	\$21,564.00
60 Internal Service Fund	No Self Insurance data to report			
	211 Medical Insurance			
	212 Dental Insurance			
	215 Eye Care Insurance			
	216 Prescription Insurance			
	271 Self-Insurance Medical Benefits			
	272 Self-Insurance Dental Benefits			
	275 Self-Insurance Eye Care Benefits			
	276 Self-Insurance Prescription Benefits			
	FUND TOTAL			
Total of All Funds		\$2,902,262.18	\$1,106,068.00	\$4,008,330.18

Function	Special Education (Prior Year)	Nonspecial Education (Prior Year)	Total (Prior Year)	Special Education (Current Year)	Nonspecial Education (Current Year)	Total (Current Year)
2120 Guidance Services	253,091.87	379,637.81	632,729.68	254,617.95	381,926.93	636,544.88
2140 Psychological Services	114,151.04	76,100.69	190,251.73	125,570.15	83,713.44	209,283.59
2150 Speech Pathology and Audiology Services	42,778.31		42,778.31	41,454.51		41,454.51
2160 Social Work Services	176,045.40	3,592.76	179,638.16	173,952.16	3,550.04	177,502.20
2260 Instruction and Curriculum Development Services	226,758.45		226,758.45	249,263.93		249,263.93
2350 Legal and Accounting Services	3,062.95	17,643.90	20,706.85	3,376.28	20,400.37	23,776.65
2420 Medical Services						
2440 Nursing Services	45,690.51	263,196.38	308,886.89	43,219.84	261,145.23	304,365.07
2700 Student Transportation Services	247,247.06	1,563,357.26	1,810,604.32	259,094.29	1,576,141.85	1,835,236.14
Total	\$1,108,825.59	\$2,303,528.80	\$3,412,354.39	\$1,150,549.11	\$2,326,877.86	\$3,477,426.97

(PRINCIPAL AMOUNTS ONLY)

GOVERNMENTAL FUNDS/ACTIVITIES

	Short-Term Borrowing	General Obligation Bonds/Notes	Authority Building Obligations	Other Long-Term Debt	Other Post- Employment Benefits (OPEB)	Compensated Absences	Net Pension Liability	Total
1. Debt at Beginning of Fiscal Year		33,590,000.00			5,315,740.00	498,268.00	42,666,000.00	82,070,008.00
2. Additional Debt Incurred During Year							1,501,000.00	1,501,000.00
3. Retirements and Repayments		800,000.00			436,718.00	6,960.00		1,243,678.00
4. Debt at End of Fiscal Year		32,790,000.00			4,879,022.00	491,308.00	44,167,000.00	82,327,330.00
5. Accreted Interest at End Of Fiscal Year								
6. Total Debt and Accreted Interest		32,790,000.00			4,879,022.00	491,308.00	44,167,000.00	82,327,330.00
7. Current Portion P&I - Due within 1 year		2,012,950.00						2,012,950.00
8. Interest Paid during current fiscal year		987,575.00						987,575.00

(PRINCIPAL AMOUNTS ONLY)

PROPRIETARY FUNDS

1. Debt at Beginning of Fiscal Year
2. Additional Debt Incurred During Year
3. Retirements and Repayments
4. Debt at End of Fiscal Year
5. Accreted Interest at End Of Fiscal Year
6. Total Debt and Accreted Interest
7. Current Portion P&I - Due within 1 year
8. Interest Paid during current fiscal year

Total Principal and Interest Payments Made by Your School - All Funds

Function	Fund	Principal (910)	Principal (920)	Interest (830)	Total (Principal +Interest)	Misc Other Uses (990)
5110	10	General Fund	800,000.00			
5110	20	Special Revenue Funds		987,574.67	1,787,574.67	
5110	30	Capital Projects Funds				
5110	40	Debt Service Fund				
5110	90	Permanent Fund				
5120	10	General Fund				
5120	20	Special Revenue Funds				
5120	30	Capital Projects Funds				
5120	40	Debt Service Fund				

Total Debt Payments - Governmental Funds	\$800,000.00	\$987,574.67	\$1,787,574.67
--	--------------	--------------	----------------

Function	Fund	Principal (910)	Principal (920)	Interest (830)	Total (Principal +Interest)
5110	50	Enterprise Fund			
5110	60	Internal Service Fund			
5120	50	Enterprise Fund			
5120	60	Internal Service Fund			

Total Debt Payments - Proprietary Funds

Debt Details
Governmental Funds/ Activities

Debt Category	Debt Issue Date (MM/YYYY)	Debt at Beginning of Fiscal Year	Principal Amounts Only		Debt at End of Fiscal Year	Current Portion Due Within One Year (Principal and Interest)	Interest Paid During Fiscal Year
			Additions	Reductions / Repayments			
General Obligation Bonds/Notes – CIB	03/2020	19,880,000.00		690,000.00	19,190,000.00	1,102,600.00	795,200.00
General Obligation Bonds/Notes – CIB	03/2020	13,710,000.00		110,000.00	13,600,000.00	910,350.00	192,375.00
Compensated Absences		498,268.00		6,960.00	491,308.00		
Other Post-Employment Benefits (OPEB)		5,315,740.00		436,718.00	4,879,022.00		
Net Pension Liability		42,666,000.00	1,501,000.00		44,167,000.00		
Totals for Debt Entered:		\$82,070,008.00	\$1,501,000.00	\$1,243,678.00	\$82,327,330.00	\$2,012,950.00	\$987,575.00

General Fund (10)

Section 1: Tuition/Purchased Services as Reported within Expenditure Detail

Tuition Reported in General Fund Expenditures 1000-560

Amount
2,838,247.94

Purchased Services in General Fund Expenditures 1000-594 and 1000-597

Section 1 Total **\$2,838,247.94**

Section 2: Tuition Paid to Institution Types During Fiscal Year

	Tuition Paid For Nonspecial Education	Tuition Paid For Special Education	Total
1 1306 Institutions			
2 Institutionalized Children's Programs			
3 Juveniles Incarcerated in Adult Facilities			
4 Residential Treatment Facilities	37,564.49	210,034.92	247,599.41
5 Other Local Education Agencies	26,415.75	12,728.64	39,144.39
6 Brick and Mortar Charter Schools			
7 Cyber Charter Schools	647,101.48	126,083.60	773,185.08
8 Career and Technology Centers	1,421,804.46		1,421,804.46
9 Approved Private Schools		356,514.60	356,514.60
10 PA Chartered Schools for the Deaf and Blind			
11 Private Residential Rehabilitative Institutions			
12 Juvenile Detention Centers			
13 Special Program Jointures			
14 Other Tuition Not Included Elsewhere In This Section			

Section 2 Total **\$2,132,886.18** **\$705,361.76** **\$2,838,247.94**

Food Service / Cafeteria Operations Fund (51)	
3000 Operation of Non-Instructional Services	
100 <u>Personnel Services – Salaries</u>	<u>Total</u>
100 Personnel Services – Salaries	365,439.39
Total Personnel Services – Salaries	\$365,439.39
200 <u>Personnel Services – Employee Benefits</u>	
210 Group Insurance – Contracted Provider	18,840.21
220 Social Security Contributions	27,645.43
230 PSERS Retirement Contributions	125,866.72
250 Unemployment Compensation	1,538.83
260 Workers' Compensation	1,607.81
Total Personnel Services – Employee Benefits	\$175,499.00
300 <u>Purchased Professional and Technical Services</u>	
340 Technical Services	20.00
Total Purchased Professional and Technical Services	\$20.00
400 <u>Purchased Property Services</u>	
430 Repairs and Maintenance Services	109.18
Total Purchased Property Services	\$109.18
500 <u>Other Purchased Services</u>	
530 Communications	600.00
580 Travel	191.49
Total Other Purchased Services	\$791.49
600 <u>Supplies</u>	
610 General Supplies	49,441.51
620 Energy	3,137.61
630 Food	312,810.45
650 Supplies & Fees – Technology Related	7,154.45
Total Supplies	\$372,544.02
700 <u>Property</u>	
740 Depreciation	15,736.00
Total Property	\$15,736.00
800 <u>Other Objects</u>	
810 Dues and Fees	159.00
890 Miscellaneous Expenditures	1,731.00
Total Other Objects	\$1,890.00
Total 3000 Operation of Non-Instructional Services	\$932,029.08

Food Service / Cafeteria Operations Fund (51)			
3100 Food Services			
	Elementary	Secondary	Federal
100 <u>Personnel Services – Salaries</u>			Total
100 Personnel Services – Salaries			
	365,439.39		365,439.39
Total Personnel Services – Salaries	\$365,439.39		\$365,439.39
200 <u>Personnel Services – Employee Benefits</u>			
210 Group Insurance – Contracted Provider	18,840.21		18,840.21
220 Social Security Contributions	27,645.43		27,645.43
230 PSERS Retirement Contributions	125,866.72		125,866.72
250 Unemployment Compensation	1,538.83		1,538.83
260 Workers' Compensation	1,607.81		1,607.81
Total Personnel Services – Employee Benefits	\$175,499.00		\$175,499.00
300 <u>Purchased Professional and Technical Services</u>			
340 Technical Services	20.00		20.00
Total Purchased Professional and Technical Services	\$20.00		\$20.00
400 <u>Purchased Property Services</u>			
430 Repairs and Maintenance Services	109.18		109.18
Total Purchased Property Services	\$109.18		\$109.18
500 <u>Other Purchased Services</u>			
530 Communications	600.00		600.00
580 Travel	191.49		191.49
Total Other Purchased Services	\$791.49		\$791.49
600 <u>Supplies</u>			
610 General Supplies	49,441.51		49,441.51
620 Energy	3,137.61		3,137.61
630 Food	312,810.45		312,810.45
650 Supplies & Fees – Technology Related	7,154.45		7,154.45
Total Supplies	\$372,544.02		\$372,544.02
700 <u>Property</u>			
740 Depreciation	15,736.00		15,736.00
Total Property	\$15,736.00		\$15,736.00
800 <u>Other Objects</u>			
810 Dues and Fees	159.00		159.00
890 Miscellaneous Expenditures	1,731.00		1,731.00
Total Other Objects	\$1,890.00		\$1,890.00
Total 3100 Food Services	\$932,029.08		\$932,029.08

	<u>Food Service(51)</u>	<u>Child Care Operations(52)</u>	<u>Other Enterprise(58)</u>	<u>Internal Service(60)</u>	<u>Total</u>
3000 <u>Operation of Non-Instructional Services</u>					
3100 Food Services	932,029.08				932,029.08
Total Operation of Non-Instructional Services	\$932,029.08				\$932,029.08
TOTAL ACTUAL EXPENDITURES & OTHER FINANCING USES	\$932,029.08				\$932,029.08

LEA : 116605003 Mifflinburg Area SD

Printed 12/2/2021 3:44:06 PM

Fund	School	School Number	Local Personnel	Local Nonpersonnel	State Personnel	State Nonpersonnel	Federal Personnel	Federal Nonpersonnel	Total Explanation
10	Mifflinburg Area Intmd Sch	7863	4,270,567.40	352,829.55	1.00	1.00	219,322.64	1.00	4,842,722.59
	Mifflinburg Area MS	6809	4,477,653.02	274,575.09	1.00	1.00	48,991.27	1,916.69	4,803,138.07
	Mifflinburg Area SHS	4091	5,646,612.63	461,118.46	1.00	1.00	51,288.97	96.35	6,159,118.41
	Mifflinburg El Sch	6360	3,747,906.29	311,778.34	354,755.00	1.00	595,615.41	1,703.69	5,011,759.73
	Total		18,142,739.34	1,400,301.44	354,758.00	4.00	915,218.29	3,717.73	20,816,738.80