

PRIOR LAKE-SAVAGE AREA SCHOOLS

WELCOME

CLASS OF 2037



2024-25 SCHOOL YEAR

KINDERGARTEN INFORMATION

SAVE THE DATES!

December 12, 6:30 p.m.
Kindergarten Information Night
at Redtail Ridge Elementary
All families welcome

December 13, 6:30 p.m.
La ola del lago at Grainwood
Spanish Immersion Parent Panel
La ola del lago Media Center

ONLINE ENROLLMENT BEGINS DEC. 14, 2023
WWW.PLSAS.ORG/ENROLL

Countdown to Kindergarten



December 12, 6:30 p.m.

Kindergarten Information Night
Redtail Ridge Elementary

December 13, 6:30 p.m.

La ola del lago at Grainwood
Spanish Immersion Parent Panel
La ola del lago Media Center

December 14, 2023

District wide online kindergarten
enrollment opens: www.plsas.org/enroll

Parents are strongly encouraged
to register their child between
December 14, 2023 and January 5,
2024 to help us plan for staffing needs
at each building.

May 13, 2024

Kindergarten Open House
Students will have an opportunity to
ride a school bus and see their school.

Five Hawks and Redtail Ridge:
3:30-4:30 p.m.

Glendale, Hamilton Ridge, Jeffers
Pond, La ola del lago at Grainwood,
and WestWood:
4:30-5:30 p.m.

July 29- Aug. 9, 2024

Great Start to Kindergarten
assessment days. Specific dates and
information will come from your
child's schools.

Families who do not have
computer access can visit the
District Services Center to use
our computer kiosk between the
hours of 8 a.m. and 4 p.m. Please
allow 30 minutes to complete
enrollment. The DSC is located at
4540 Tower Street SE, Prior Lake.





Providing an education as unique as your child.

Welcome! At Prior Lake-Savage Area Schools, we know that every child learns differently. That's why we offer program options to meet varying needs and to optimize learning for all students.

We believe all kindergarten students need developmentally appropriate activities throughout their day in the areas of gross and fine motor skills, cognitive development and social/emotional development.

We form partnerships with parents to create a safe, caring, cooperative environment where students learn through developmentally appropriate practices while showing respect for themselves, others and their community.

Our teachers are highly trained, licensed professionals who have a passion for education and are ready to deliver high-quality instruction and a successful kindergarten experience for your child.



Our mission is to educate all learners to reach their full potential as contributing and productive members of our ever-changing global community.



Kindergarten Programs	1-2
Full-Day Kindergarten and La ola del lago at Grainwood, Spanish Immersion	
E-STEM	3
Environmental Education - Science, Technology, Engineering, Math	
Preparing for Kindergarten	4-5
School readiness, Great Start to Kindergarten, Early Childhood Screening	
School Services	6
Transportation, Child Nutrition Services, Health Services	
Attendance Boundaries	7
Elementary school attendance areas	
Resident and Non-Resident Students	8
Resident students, open enrollment	
Online Kindergarten Registration	9
Online enrollment, watch our videos	
Kids' Company	9
Before and after school child care	
Our Elementary Schools	10
Addresses and phone numbers	
Good to Know	11
Responsive classroom, communication, volunteer	

Kindergarten Programs

Parents of kindergarten students have the option to register for Full-Day Kindergarten available at their elementary boundary school or La ola del lago, Full-Day Kindergarten Spanish Immersion at Grainwood. The curriculum outcomes for students are the same whether involved in the traditional Full-Day Kindergarten or La ola del lago Spanish Immersion. The school day for both programs is 6 1/2 hours and includes the core curriculum as well as field trips, music, physical education, art and technology/media, with all students having access to iPads and SMART Boards in their classroom.

Full-Day Kindergarten

Full-Day Kindergarten provides a well-rounded kindergarten curriculum that gives each child the opportunity to discover and learn through listening, observing, exploring, experimenting and practicing. Students will have experiences that promote social, emotional, physical and intellectual growth, with curriculum that follows Minnesota state standards in math, reading, writing, social studies and science. Each child is introduced to a wide range of academic curriculum that helps develop the whole child. During Full-Day Kindergarten, students have quiet time during the day, but this is not usually a time that children sleep.

Curricular Areas	Kindergarten
Social readiness and work habits, Responsive Classroom	Morning meeting, expectations and logical consequences, Second Step and classroom organization
Reading	Whole-group instruction, small group guided reading sessions, including phonics instruction, along with opportunities for independent reading
Writing	Whole-group instruction, small group guided writing sessions, and independent writing
Math	Core instruction. Extension activities that provide challenge based on student ability.
Science & E-STEM (Environmental Education - Science, Technology, Engineering and Math)	Core instruction. Extension activities that provide challenge based on student ability.
Social Studies	Core instruction
Specials: Art, Music, PhyEd, Media/Technology	250 minutes/week

Full-Day Kindergarten Spanish Immersion

La ola del lago at Grainwood

Parents have the option of enrolling their child in La ola del lago at Grainwood, the district's full-day Spanish Immersion program for students in grades K-5. La ola del lago welcomes students from anywhere within the district and outside its boundaries. As part of the public school system, there is no tuition cost to parents and in-district transportation is provided.

La ola del lago translates to "wave of the lake," a name that symbolizes the natural resources of our community and the district's commitment to environmental education.

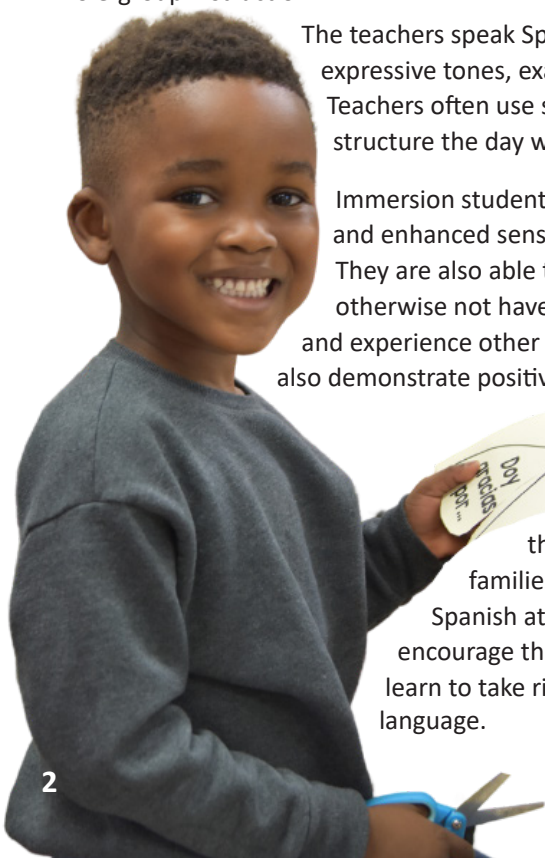
La ola del lago is similar to traditional kindergarten curriculum except all classroom instruction is in Spanish. Students develop high levels of proficiency in their first language and work toward the same academic standards as students in the traditional Full-Day Kindergarten program.

Core curriculum is similar, with the same look and feel of the traditional program curriculum. Students also participate in field trips, music, physical education, art and technology/media. Instruction is differentiated through individual, small group and whole-group instruction.

The teachers speak Spanish throughout the day using expressive tones, exaggerated gestures and many visual aids. Teachers often use songs, useful phrases, and rhymes and structure the day with familiar routines.

Immersion students demonstrate flexibility in thinking and enhanced sensitivity to verbal and non-verbal cues. They are also able to communicate with people they would otherwise not have a chance to know and are able to travel and experience other cultures more meaningfully. All students also demonstrate positive cross-cultural attitudes and behaviors.

Parents of Spanish Immersion students should be willing to strongly support the program and transmit their enthusiasm to their student, yet families do not need to speak or be fluent in Spanish at home. Parents should be willing to encourage their child during challenging times and learn to take risks in speaking and writing a second language.



E-STEM Education

Environmental Education - Science, Technology, Engineering, Math

Our schools are the first district-wide E-STEM schools in the state of Minnesota. E-STEM is an interdisciplinary approach to instruction and learning focused on inquiry and real world problem-solving in the 21st Century, applying hands-on science, technology, engineering and mathematical practices with projects and field experiences related to the environment.

E-STEM is available to all students, early childhood through grade 12. Our award-winning programs have been modeled by school districts throughout the state and country.

Our district programs have been recognized by the U.S. Department of Education with PLSAS being named a Green Ribbon Schools Sustainability District that supports Environmental Education (EE).

Thanks to community partners, innovative teachers, our Community Education services and the natural beauty surrounding our district, our schools lead the way in integration of environmental education into all aspects of the school day.

Our program is unique in that environmental education is embedded into the core curriculum. This is a major component to the success of the program which results in students who learn to become critical thinkers and approach problem solving by studying multiple perspectives.

Every school has an outdoor classroom setting used by teachers and students. Each year, our elementary schools hold a day-long, outdoor EE festival that has captured the attention of Twin Cities media and has become a tradition students look forward to each year.



E-STEM
ENVIRONMENTAL EDUCATION
SCIENCE • TECHNOLOGY
ENGINEERING • MATH

U.S. DEPARTMENT OF EDUCATION
GreenRibbonSchools



Preparing for Kindergarten

Kindergarten students will play, explore, discover and grow. Support their learner readiness by reading together often, counting items in the grocery cart, talking about feelings and singing songs. Encourage independence in the bathroom and with dressing. Play together imaginatively. Write your names together and then talk about the letter names and their sounds. If your child finds it fun, practice their home address and phone number. Some ideas to help prepare your child for kindergarten are listed below. Help your child:

- Demonstrate increasing comfort with separation from family/caregivers
- Manage clothing, bathroom use and outdoor gear independently
- Speak their first and last name when asked
- Share their parents/caregivers first and last name when asked
- Ask for help when needed
- Try hard to complete a task of interest
- Enjoy reading together and is careful handling books
- Write their first name
- Recognize some letters and can make their sounds
- Ask: Who, What, When, Where, Why and How questions
- Label how she or he is feeling
- Label how a friend or family member is feeling
- Count to 10
- Identify “more” and “less”
- Enjoy puzzles
- Draw a picture and replaces the marker cap when finished
- Label 5 shapes
- Move safely from one place to the next, quickly and slowly
- Hold a scissors and pencil

Early Childhood Screening

Have you scheduled your
Early Childhood Screening?
Call: 952-226-0975 or scan the code



Minnesota requires all children to be screened before entering public school kindergarten. The screening is most valuable soon after your child’s third birthday and gives you and your child an early connection to PLSAS.

Screening is FREE and includes growth, development, and immunization checks. Your child will be assessed in preschool concepts, communication skills, motor skills and social-emotional skills.

If your child has already been screened in HeadStart or in another school district, please provide the screening report. Children only need to be screened one time. Children do not need to be screened if they have an active Individualized Education Program.

Parents can choose to conscientiously object to screening for their child. If you object, please provide a signed statement indicating your conscientious objection screening.



Preparing for Kindergarten

Great Start to Kindergarten

PLSAS is committed to preparing instruction that caters to the unique learning needs of all children. To help us in our planning, we will be scheduling “Great Start to Kindergarten” assessments for students July 29- Aug. 9, 2024.

In the summer, we will be contacting enrolled kindergarten families with specific dates and times to schedule your child’s “Great Start to Kindergarten” experience.

A trained staff member will work with your child one-on-one to measure reading, math and social skills. The testing will take up to 30 minutes and will help us place your child in the kindergarten classroom that is best suited for him/her.

**Enrollment is for students
5-years-old by September 1.**

**Children reaching age 5 after
September 1 may meet specific
criteria for early entrance into
kindergarten.**

**Visit the kindergarten
enrollment website to access
an Early Entrance application at
www.plsas.org/enroll**



School Services

Transportation

The attendance areas for kindergarten are established by elementary school boundaries. To find your designated school, please visit www.plsas.org/map

Kindergarten bus stops will change from year-to-year to recognize changing needs of in-district students. The transportation department will determine bus stop locations in the summer and post bus assignments and bus stop locations to your personal Infinite Campus website account in mid August. Open enrolled students are eligible to ride the bus from any established stop located within the school attendance boundary area. Parents requiring child care or open enrolled stops will need to submit an Alternate Bus Stop Request Form, available on the district website, by July 15. These forms are due every year.

Bus stops in your neighborhood have been established to serve all children. While we are not able to make bus stops within eyesight of every student's house, we do make every effort to create kindergarten stops as close to home as possible. To help make the bus stop as safe as possible, we recommend that a parent wait with kindergarten students at the bus stop. In addition, bus stops are frequently checked by transportation personnel to help ensure the safety of all students. Per state law, the maximum walking distance, without hazards, to a bus stop for students in grades K-5 is 1 mile.

Child Nutrition Services

All kindergarten students receive free breakfast and lunch on school days at no cost. This includes a healthy meal for breakfast and a complete meal for lunch - including a fruit and vegetable. If a student wants something extra - like another entree or a bottle of water, they'll need to pay for those items. If your child has any food allergies, please submit a doctor's note to the Health Aide at your child's school.

Educational Benefits

You may qualify for educational benefits that could help your whole family! By filling out an Application for Educational Benefits, families may qualify for reduced or waived child care, field trips, discounts on internet service and much more. Even if you don't think you will qualify, all families are encouraged to apply. Your completed application could also provide additional funding for your child's school. Apply through your SchoolCafé account or visit www.plsas.org/meals

Health Services

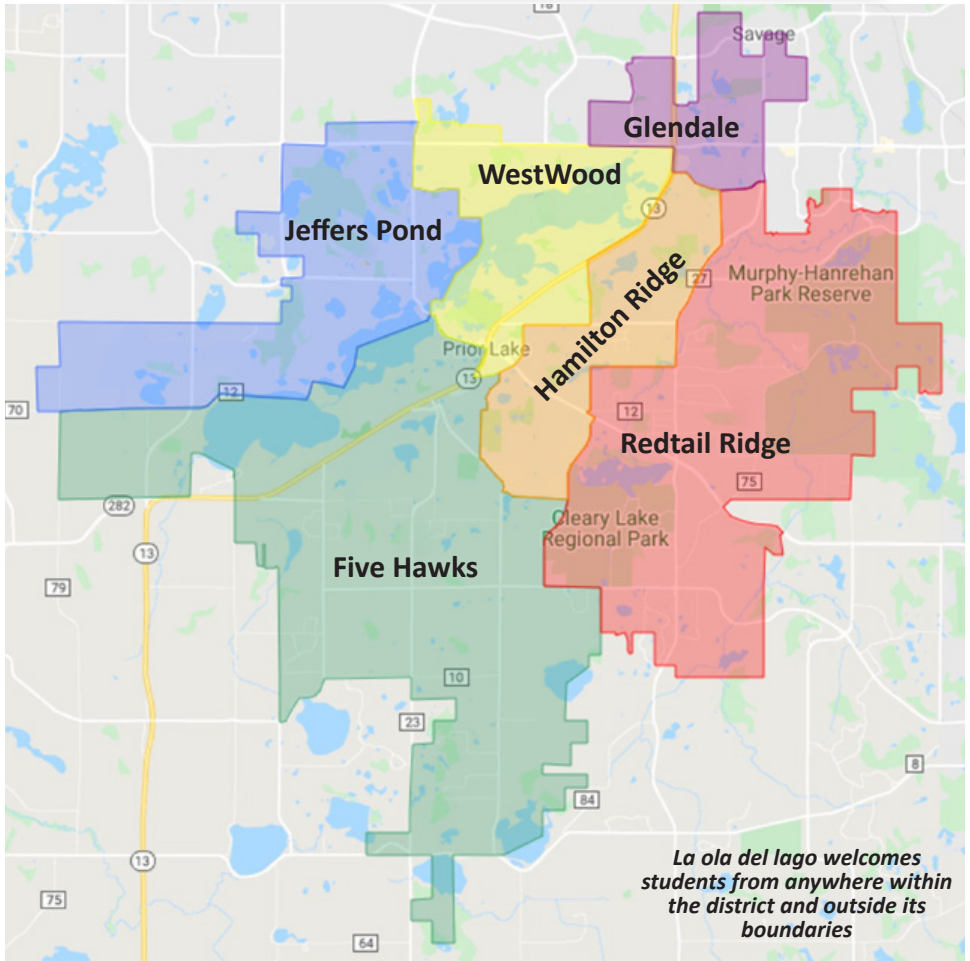
PLSAS provides health services support for all students in the district. If your child has any chronic health concerns, please indicate this under the Health Services section of the online enrollment process, which opens on December 14, 2023. Our health services department will coordinate with you to accommodate your child's health needs by creating individualized health care plans.

Per Minnesota School's Immunization Law, all children attending public school must be up to date with required vaccinations, must show proof of medical exemption by a medical provider, or must provide notarized non-medical exemption from a parent. Please upload your child's immunization record during the enrollment process or send it directly to your child's school health office.

Please visit our website or call your child's health office if you would like additional information regarding individualized health care plans, medication during the school day or immunization information.

Attendance Boundaries

To find your elementary boundary school, visit:
www.plsas.org/map



Resident & Non-Resident Students

Resident Students

Resident students will attend their elementary boundary school or La ola del lago at Grainwood Spanish Immersion, and complete the enrollment process online. Parents are strongly encouraged to register their child between December 14, 2023 and January 5, 2024 to help us plan for staffing needs at each building.

La ola del lago for Resident Families

Currently, the district has the capacity to accommodate 115 kindergarten students at La ola del lago (LODL). If there are fewer than 115 resident students enrolled at LODL by January 18, all the children registered will be accepted. If more than 115 resident students have submitted a kindergarten enrollment indicating a preference for LODL, the district will conduct a lottery on January 19. Parents of resident students wishing to attend LODL must enroll by January 18 to be included in the lottery.

Incoming resident kindergarten students who are siblings of current LODL students will receive priority in the lottery. Resident students registering after January 18 will be accepted into LODL on a first come, first served basis until the district reaches 115 students at LODL or, if a lottery was conducted, they will be placed on a waiting list.



Non-Resident Students

PLSAS welcomes non-resident students as Lakers through the Minnesota Department of Education's Open Enrollment (OE) program. Under OE, families are requesting enrollment into the district, not a site within the district. OE forms are to be filled out listing 3 school options (no options are guaranteed). OE students will be assigned a school based on building capacity and district class sizes.

We are accepting and approving applications for open enrollment. School placement for OE families will be announced in May. Forms are available on our website: www.plsas.org/enroll

To open enroll into the district, please fill out an open enrollment form located on our website: www.plsas.org/enroll/open-enrollment, then:

email it: btlusty@plsas.org

fax it: 952-226-0049 or

mail it: District Services Center, 4540 Tower Street SE, Prior Lake, MN 55372

Questions? Please call 952-226-0077

Kindergarten Registration

Online enrollment opens Dec. 14, 2023

Beginning December 14, PLSAS will open online enrollment for all new students, including incoming 2024-25 kindergarten students. At that time, families can visit the district's enrollment page to begin the student registration process (please see pg. 8 for important resident and non-resident enrollment details).

Parents and guardians of incoming kindergarten students are strongly encouraged to register their child online between December 14, 2023 and January 5, 2024 at www.plsas.org/enroll

To help prepare for online enrollment, please have your child's most recent immunization record ready to upload, along with your student's birth certificate or passport.

Paper enrollment packets will not be mailed. Enrollment will only be available online or by visiting the District Services Center, 4540 Tower Street SE, Prior Lake between 8 a.m. and 4 p.m. Monday - Friday. Families who do not have computer access can visit the District Services Center (DSC) to use our computer kiosk between the hours of 8 a.m. and 4 p.m. Please allow 30 minutes to complete enrollment. The DSC is located at 4540 Tower Street SE, Prior Lake.

Watch Our Kindergarten Videos

Visit our YouTube channel at www.youtube.com/isd719 to view our Full-Day Kindergarten and La ola del lago at Grainwood videos where you can see what a school day looks like for kindergarten students. You can also scan the QR codes below to watch the videos instantly.



Full-Day Kindergarten video



La ola del lago at Grainwood video

Kids' Company School-Age Care

Kids' Company, a program of Prior Lake-Savage Area Schools Community Education Services, offers before, after and non-school day care for all kindergarten students at every elementary school. Kids' Company can also be your choice for child care during the summer. While attending Kids' Company, students are offered choices that promote social, emotional, physical, and cognitive growth through interactive and immersive activities and experiences. For more information about Kids' Company, including how to register, visit www.plsas.org/KidsCo

Elementary Schools



Five Hawks Elementary

16620 Five Hawks Avenue SE, Prior Lake
952-226-0100



Glendale Elementary

6601 Connelly Parkway, Savage
952-226-0200



Hamilton Ridge Elementary

8100 157th Street, Savage
952-461-7800



Jeffers Pond Elementary

14800 Jeffers Pass NW, Prior Lake
952-226-0600



La ola del lago at Grainwood

5061 Minnesota Street SE, Prior Lake
952-226-0300



Redtail Ridge Elementary

15200 Hampshire Avenue, Savage
952-226-8000



WestWood Elementary & SAGE Academy

5370 Westwood Drive SE, Prior Lake
952-226-0400



Edgewood School

(Early Childhood Screening,
Circle of Friends Preschool, ECFE, ECSE)
5304 Westwood Drive SE, Prior Lake
952-226-0900

Responsive Classroom

All elementary schools practice the principles of Responsive Classroom to teach students the social skills of C.A.R.E.S. (Cooperation, Assertion, Responsibility, Empathy and Self-Control) where social-emotional and academic learning combine to encourage and empower children. Responsive Classroom helps to increase social skills and academic achievement, creates positive classroom climate and expands learner independence.

Volunteer

There are a wide variety of volunteer opportunities in all of our elementary schools. The PTC (Parent Teacher Child) and DOGS (Dads of Great Students) are groups that support our schools through many volunteer efforts.

Communication

Principals regularly communicate via parent newsletters and social media to help keep parents informed of events and school happenings.

In addition, our elementary schools use an online communication tool called Seesaw which offers a virtual window into the classroom. Seesaw is a student-driven digital portfolio that empowers students to create, reflect, share and collaborate. Parents use a unique login to see their child's work in one place along with important classroom updates and information from the school office.

**All K-12 students
have access to iPads
and SMART Boards**





PRIOR LAKE--SAVAGE
AREA SCHOOLS

4540 Tower Street SE
Prior Lake, MN 55372

Welcome to kindergarten at Prior Lake-Savage Area Schools!

Save the dates:

December 12, 6:30 p.m.
Kindergarten Information Night
Redtail Ridge Elementary
All families welcome

December 13, 6:30 p.m.
La ola del lago at Grainwood
Spanish Immersion Parent Panel
La ola del lago Media Center

December 14, 2023
Online enrollment opens
www.plsas.org/enroll

