



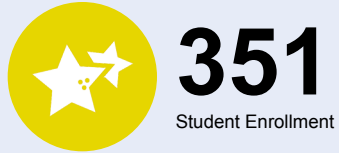
OREGON AT-A-GLANCE SCHOOL PROFILE

Fullerton IV Elementary School

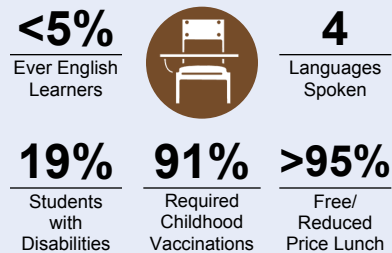
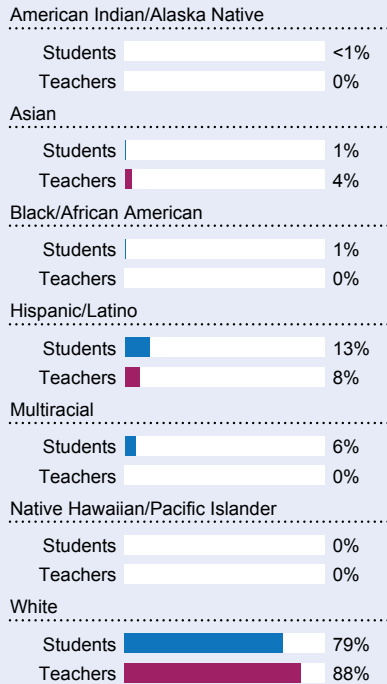
PRINCIPAL: Debbie Price | GRADES: K-5 | 2560 W Bradford Ave, Roseburg 97470 | 541-440-4081

School Environment

Students We Serve



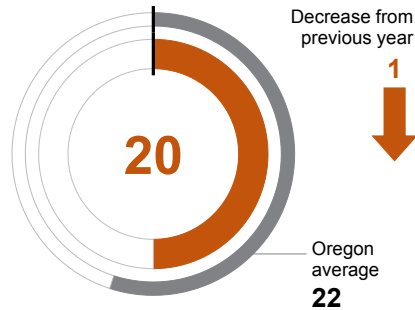
DEMOGRAPHICS



*<10 students or data unavailable

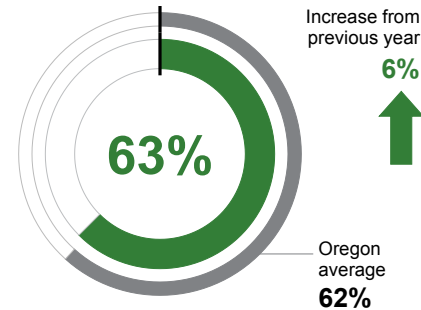
CLASS SIZE

Median class size.



REGULAR ATTENDERS

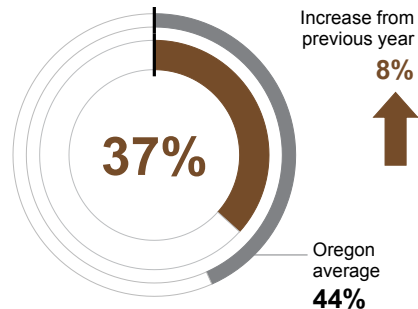
Students who attended more than 90% of their enrolled school days.



Academic Success

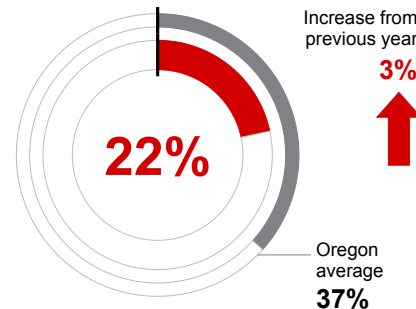
ENGLISH LANGUAGE ARTS

Students meeting state grade-level expectations.



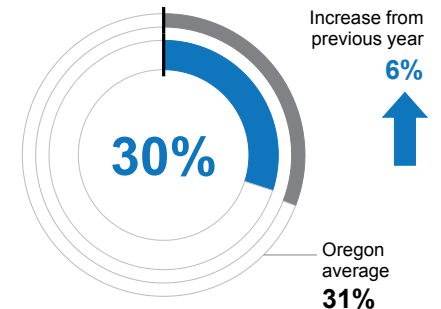
MATHEMATICS

Students meeting state grade-level expectations.



SCIENCE

Students meeting state grade-level expectations.



School Goals

Our school is committed to creating a positive and engaging learning environment which promotes a growth mindset, while supporting students to feel connected, safe, confident, and challenged. We know math is the gateway to our students' world and focus on foundational math skills. We work toward helping every student become a reader by third grade.

State Goals

The Oregon Department of Education is partnering with school districts and local communities to ensure a 90% on-time, four year graduation rate by 2027. To progress toward this goal, the state will prioritize efforts to improve attendance, provide a well-rounded education, invest in implementing culturally responsive practices, and promote continuous improvement to close opportunity and achievement gaps for historically and currently underserved students.

Safe & Welcoming Environment

Our school strives to ensure all students and their parents feel welcome. We believe that relationships are the key to all learning. Some ways we support learners are translation messages sent home with our OneCall system for easy access, providing interpreters for parent meetings, and other school events where parents are present.



OREGON AT-A-GLANCE SCHOOL PROFILE CONTINUED

Fullerton IV Elementary School

Outcomes

Our Staff (rounded FTE)



22
Teachers



15
Educational assistants



<1
Counselors/
Psychologists/
Social Workers



83%
Average teacher retention rate over the past three years



75%
% of licensed teachers with more than 3 years of experience



No
Same principal in the last 3 years

REGULAR ATTENDERS

American Indian/Alaska Native	<10 students or data unavailable
Asian	<10 students or data unavailable
Black/African American	<10 students or data unavailable
Hispanic/Latino	67%
Multiracial	42%
Native Hawaiian/Pacific Islander	<10 students or data unavailable
White	64%
Free/Reduced Price Lunch	63%
Ever English Learner	39%
Students with Disabilities	56%
Migrant	<10 students or data unavailable
Homeless	<10 students or data unavailable
Students in Foster Care	<10 students or data unavailable
Military Connected	<10 students or data unavailable
Talented and Gifted	64%
Female	67%
Male	59%
Non-Binary	<10 students or data unavailable

ENGLISH LANGUAGE ARTS

<10 students or data unavailable
<10 students or data unavailable
<10 students or data unavailable
16%
<10 students or data unavailable
<10 students or data unavailable
39%
37%
<10 students or data unavailable
10%
<10 students or data unavailable
<10 students or data unavailable
<10 students or data unavailable
<10 students or data unavailable
<10 students or data unavailable
35%
38%
<10 students or data unavailable

MATHEMATICS

<10 students or data unavailable
<10 students or data unavailable
<10 students or data unavailable
<5%
<10 students or data unavailable
<10 students or data unavailable
22%
22%
<10 students or data unavailable
<5%
<10 students or data unavailable
<10 students or data unavailable
<10 students or data unavailable
<10 students or data unavailable
<10 students or data unavailable
19%
24%
<10 students or data unavailable

About Our School

BULLYING, HARASSMENT, AND SAFETY POLICIES

Our school has a CDS (Child Development Specialist) who visits every classroom every six days. She teaches lessons on socio-emotional needs, how to address bullying and harassment, conducting oneself with integrity and honesty, among many other topics. We have skills groups for students who are struggling (e.g., connecting with others appropriately, strategies for behaving appropriately on the bus, etc.), and we employ a number of strategies for connecting adults and students for positive reinforcement.

EXTRACURRICULAR ACTIVITIES

- Busing to YMCA and Boys and Girls Club
- Robotics Club
- Garden Club
- Monthly Skate Nights at the YMCA

PARENT ENGAGEMENT

We have a very active Parent Booster club that meets monthly to plan for activities that engage our families. As a school, we host events multiple times a year that bring our families together (e.g., Family Reading Night, STEAM night, Family Game Night (to focus on math games), and our end-of-year BBQ). Finally, many of our families volunteer during the year and/or attend events that take place during the school day.

COMMUNITY ENGAGEMENT

- We partner with local business to provide students with learning opportunities in connection with our community:
- Douglas County Museum
- Umpqua Art Center
- Umpqua Farm to School
- OSU Extension (Nutrition classes, nursing services, dental services)
- Police and Fire Departments
- Umpqua Community College
- Take Root Parenting Connection
- Douglas ESD
- Roseburg FFA Student Chapter
- Mercy Foundation