

LEA Name : Eastern Lancaster County SD  
Address : 669 E Main St  
New Holland , PA 17557

County : Lancaster  
AUN Number : 113362303  
LEA Type : SD

## Annual Financial Report Accuracy Certification Statement

For Fiscal Year Ending  
6/30/2023

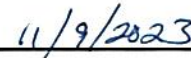
Pennsylvania Department of Education  
&  
Office of Comptroller Operations

PDE-2056: Intermediate Unit

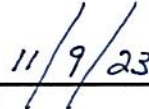
PDE-2057: School District, AVTS/CTC, Charter School,  
and Special Program Jointure

**CERTIFICATION: By signing this page I agree that the electronic data submitted is a complete and accurate statement of the financial operations and status of the local education agency for the fiscal year. It has been prepared in accordance with generally accepted accounting principles and established Commonwealth of PA reporting guidelines.**

  
Chief School Administrator Signature

  
Date

  
Board Secretary Signature

  
Date

Chrissy Grebe

Contact Person

chrissy\_grebe@elanco.org

Contact Person E-mail Address

(717)354-1505 Ext :

Contact Person Telephone Number

Contact Person Fax Number

**Audit Certification**  
**Annual Financial Report:**  
For Fiscal Year Ending 6/30/2023  
(Pursuant to PA School Code Section 218(b))

LEA Name : Eastern Lancaster County SD  
AUN Number : 113362303  
County : Lancaster

<b>Audit Certification Due:</b> 12/31/2023
---

This certification is applicable to the Annual Financial Report data submitted through the Consolidated Financial Reporting System (CFRS).

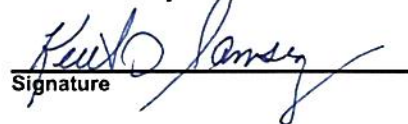
CERTIFICATION: By signing this page I agree that the financial statements of the school have been properly audited as noted above pursuant to Article XXIV, and in the auditor's professional opinion, the Annual Financial Report (PDE-2057) submitted through CFRS is materially consistent with the audited financial statements.

Chief School Administrator

  
Signature

11/9/2023  
Date

Board Secretary

  
Signature

11/9/23  
Date

Chrissy Grebe

\_\_\_\_\_  
Contact Person

chrissy\_grebe@elanco.org

\_\_\_\_\_  
Contact Person E-mail Address

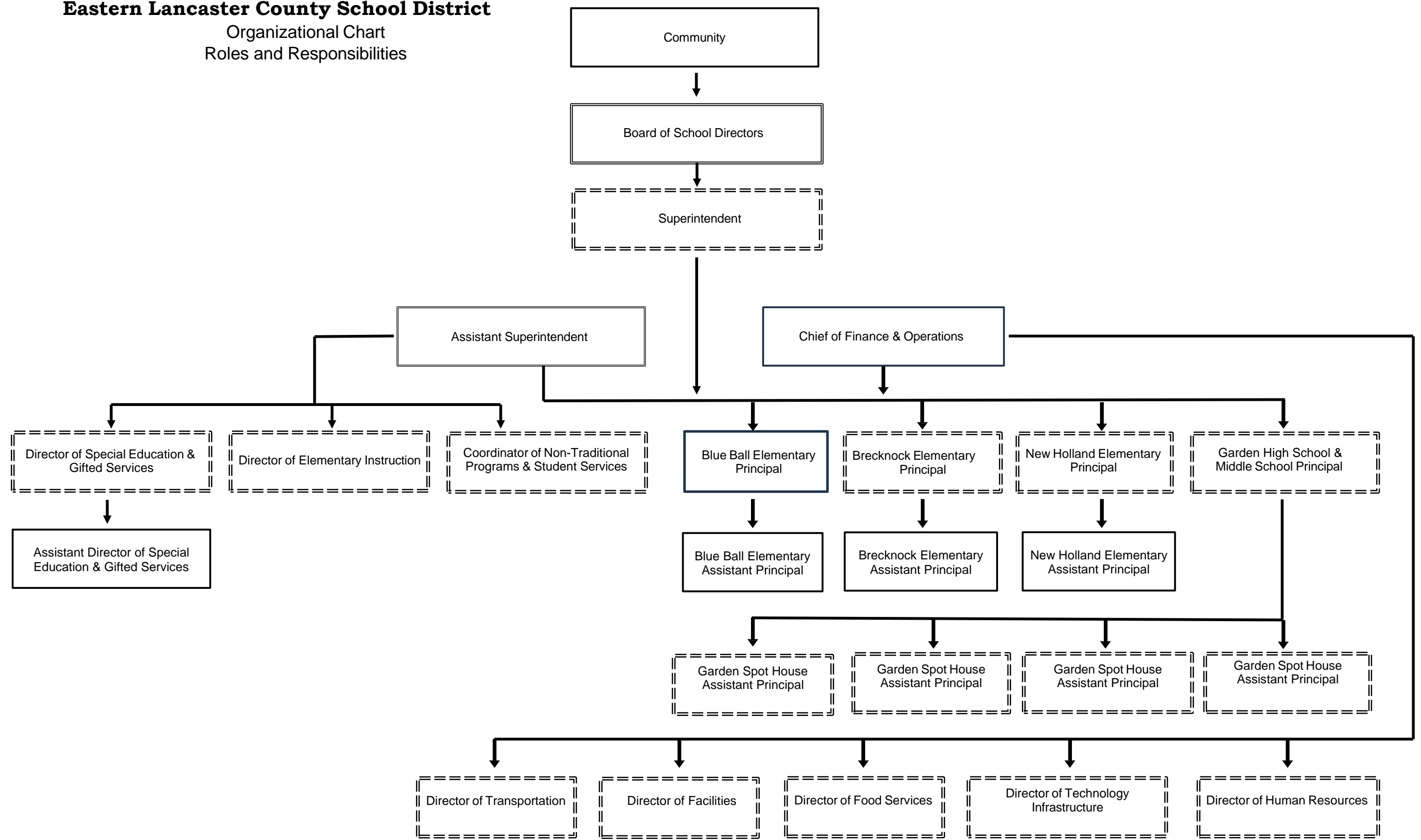
(717)354-1505

Ext :

\_\_\_\_\_  
Contact Person Telephone Number

\_\_\_\_\_  
Contact Person Fax Number

**Eastern Lancaster County School District**  
Organizational Chart  
Roles and Responsibilities





Book	Policy Manual
Section	600 Finances
Title	GASB Statement 34
Code	622
Status	Active
Adopted	March 20, 2023

### **Purpose**

The Board recognizes the need to implement the required accounting and financial reporting standards stipulated by the Pennsylvania Department of Education.

The primary objectives of implementing the Governmental Accounting Standards Board (GASB) Statement 34 are to assure compliance with state requirements, and properly account for both the financial and economic resources of the District.

### **Authority**

Participation of the School District in any such activity shall be in accordance with Board policy.[\[1\]](#)[\[2\]](#)

### **Delegation of Responsibility**

The responsibility to coordinate the compilation and preparation of all information necessary to implement this policy is delegated to the Superintendent or designee.

The designated individual shall be responsible for implementing the necessary procedures to establish and maintain a fixed asset inventory, including depreciation schedules. Depreciation shall be computed on a straight-line basis over the useful lives of the assets, using an averaging convention. Normal maintenance and repairs shall be charged to expense as incurred; major renewals and betterments that materially extend the life or increase the value of the asset shall be capitalized. A schedule of accumulated depreciation shall be consistent from year to year. The basis for depreciation, including groups of assets and useful lives, shall be in writing and submitted for review to the Board or Finance Committee.

The Chief of Finance and Operations shall prepare the required Management Discussion and Analysis (MD&A). The MD&A shall be in the form required by GASB Statement 34 and shall be submitted to the Board for approval, prior to publication.

Legal [1. 24 P.S. 218](#)  
[2. 24 P.S. 613](#)

Governmental Accounting Standards Board, Statement No. 34

Val Number	Description	Justification
41162	<p>Expenditure Detail, Salaries (Object 100) and Benefits (Object 200 series): Amounts must be entered for both Salaries and Benefits.</p> <p>Please verify following fund and function codes: Fund 10 Function 2910;</p>	<p>The amount reported in 2910-230 is for the employers share of purchase of service (POS) PSERS payments</p>
42420	<p>Expenditure Detail: Total current year 2700-513 expenditure varies from prior year by 10%. Correct the data or enter a justification.</p> <p>2700-513, AFR Exp Detail: \$2,735,920.99 2700-513, PY AFR Amount: \$2,430,324.85</p>	<p>The district's contracted cost increased over the prior year based on contract obligations</p>
50074	<p>SOIN: Interest paid during the fiscal reported on the SOIN for General Obligation Bonds, Authority Building Obligations, Extended Term Financing, and/or Other Long Term Debt is not comparable with amounts reported in Governmental Fund Expenditure Function 5110/5120, Object 830. Please correct or provide a justification.</p> <p>SOIN: Govt Funds GOB, ABO, Extended Term Financing, and/or Other Long Term Debt Interest Paid During Fiscal Year: \$31,686.21 Govt Funds Expenditure Detail: Function 5110/5120, Object 830: \$0.00</p>	<p>The \$31,686.21 is interest paid to the Lancaster County Career and Technology Center (LCCTC) for the district's share of the interest incurred on the LCCTC bond issues. This amount is reported under 1390-564 as payments to the LCCTC.</p>
50118	<p>SOIN: Reductions/Retirements have been reported for Governmental Fund General Obligation Bonds, Extended Term Financing, and/or Other Long Term Debt/Liabilities. However, comparable entries have not been reported in Governmental Fund Expenditure Functions 5110 &amp; 5120, Object 910. Please correct or provide a justification.</p> <p>SOIN: Govt Funds GOB, Extended Term Financing, and/or Other Long Term Debt Retirements/Repayments: \$61,983.45 Govt Funds Expenditure Detail: Function 5110/5120, Object 910: \$0.00</p>	<p>The \$61,983.45 is principle paid to the Lancaster County Career and Technology Center (LCCTC) for the district's share of the principle incurred on the LCCTC bond issues. This amount is reported under 1390-564 as payments to the LCCTC.</p>
50450	<p>SESS - 2350 Legal and Accounting Services: SESS Schedule amounts for Special Education vary from prior year by 40% or more. Correct the data or enter a justification.</p> <p>SESS Schedule 2350: \$37,775.67 Prior Year SESS Schedule 2350: \$21,354.17</p>	<p>The School District incurred more legal services in the current year as compared to the prior year for special education</p>

Amounts Expressed in Whole Dollars		<u>General Fund</u> <u>(10)</u>	<u>Student Sponsored</u> <u>Activity Fund</u> <u>(21)</u>	<u>Public Purpose Trust</u> <u>(27)</u>	<u>Other Compt Approved</u> <u>(28)</u>	<u>Athletic / Activity</u> <u>(29)</u>
<b>Assets And Deferred Outflows Of Resources</b>						
<b>Assets</b>						
0100	Cash and Cash Equivalents	12,814,321				
0110	Investments	2,541,625				
0120	Taxes Receivable	1,193,986				
0130	Due From Other Funds	89,297				
0141	Due From Other Governments	1,367,614				
0142	State Revenue Receivable	2,109,818				
0143	Federal Revenue Receivable	1,658,638				
0145	Other Intergovernmental Revenue Receivable					
0146	Due from Primary Government					
0147	Due from Component Unit					
0150	Other Receivables	32,478				
0170	Inventories					
0180	Prepaid Expenses (Expenditures)	299,978				
0190	Other Current Assets					
<b>Total Assets</b>		<b>\$22,107,755</b>				
0910	Deferred Outflows of Resources					
<b>Total Assets And Deferred Outflows Of Resources</b>		<b>\$22,107,755</b>				

Amounts Expressed in Whole Dollars		<u>Capital Reserve (690.</u> <u>1850)</u> <u>(31)</u>	<u>Capital Reserve (1431)</u> <u>(32)</u>	<u>Other Capital Projects</u> <u>Fund</u> <u>(39)</u>	<u>Debt Service</u> <u>(40)</u>	<u>Permanent</u> <u>(90)</u>
<b>Assets And Deferred Outflows Of Resources</b>						
<b>Assets</b>						
0100	Cash and Cash Equivalents		9,545,191			
0110	Investments		22,181			
0120	Taxes Receivable					
0130	Due From Other Funds		3,525,000			
0141	Due From Other Governments					
0142	State Revenue Receivable					
0143	Federal Revenue Receivable					
0145	Other Intergovernmental Revenue Receivable					
0146	Due from Primary Government					
0147	Due from Component Unit					
0150	Other Receivables					
0170	Inventories					
0180	Prepaid Expenses (Expenditures)					
0190	Other Current Assets					
<b>Total Assets</b>			<b>\$13,092,372</b>			
0910	Deferred Outflows of Resources					
<b>Total Assets And Deferred Outflows Of Resources</b>			<b>\$13,092,372</b>			

Amounts Expressed in Whole Dollars		<u>Total Governmental</u>
		<u>Funds</u>
<b>Assets And Deferred Outflows Of Resources</b>		
<b>Assets</b>		
0100	Cash and Cash Equivalents	22,359,512
0110	Investments	2,563,806
0120	Taxes Receivable	1,193,986
0130	Due From Other Funds	3,614,297
0141	Due From Other Governments	1,367,614
0142	State Revenue Receivable	2,109,818
0143	Federal Revenue Receivable	1,658,638
0145	Other Intergovernmental Revenue Receivable	
0146	Due from Primary Government	
0147	Due from Component Unit	
0150	Other Receivables	32,478
0170	Inventories	
0180	Prepaid Expenses (Expenditures)	299,978
0190	Other Current Assets	
<b>Total Assets</b>		<b>\$35,200,127</b>
0910	Deferred Outflows of Resources	
<b>Total Assets And Deferred Outflows Of Resources</b>		<b>\$35,200,127</b>



Amounts Expressed in Whole Dollars	<u>General Fund</u> <u>(10)</u>	<u>Student Sponsored</u> <u>Activity Fund</u> <u>(21)</u>	<u>Public Purpose Trust</u> <u>(27)</u>	<u>Other Compt Approved</u> <u>(28)</u>	<u>Athletic / Activity</u> <u>(29)</u>
<b>Liabilities And Deferred Inflows Of Resources And Fund Balances</b>					
<b>Liabilities</b>					
0400 Due to Other Funds	3,673,419				
0411 Due to Other Governments					
0412 Due to Primary Government					
0413 Due to Component Unit					
0420 Accounts Payable	878,846				
0430 Contracts Payable					
0440 Current Portion of Long-Term Debt					
0450 Short-Term Payables					
0461 Accrued Salaries and Benefits	5,463,884				
0462 Payroll Deductions and Withholding	309,987				
0480 Unearned Revenues	68,412				
0490 Other Current Liabilities	6,000				
<b>Total Liabilities</b>	<b>\$10,400,548</b>				
0950 Deferred Inflows of Resources	169,842				
<b>Fund Balances</b>					
0810 Nonspendable Fund Balance					
0820 Restricted Fund Balance					
0830 Committed Fund Balance	7,947,638				
0840 Assigned Fund Balance					
0850 Unassigned Fund Balance	3,589,727				
<b>Total Fund Balances</b>	<b>\$11,537,365</b>				
<b>Total Liabilities, Deferred Inflows Of Resources And Fund Balances</b>	<b>\$22,107,755</b>				

LEA : 113362303 Eastern Lancaster County SD

Printed 11/16/2023 8:47:04 AM

Amounts Expressed in Whole Dollars		<u>Capital Reserve (690.</u> <u>1850)</u> <u>(31)</u>	<u>Capital Reserve (1431)</u> <u>(32)</u>	<u>Other Capital Projects</u> <u>Fund</u> <u>(39)</u>	<u>Debt Service</u> <u>(40)</u>	<u>Permanent</u> <u>(90)</u>
<b>Liabilities And Deferred Inflows Of Resources And Fund Balances</b>						
<b>Liabilities</b>						
0400	Due to Other Funds					
0411	Due to Other Governments					
0412	Due to Primary Government					
0413	Due to Component Unit					
0420	Accounts Payable		56,476			
0430	Contracts Payable					
0440	Current Portion of Long-Term Debt					
0450	Short-Term Payables					
0461	Accrued Salaries and Benefits					
0462	Payroll Deductions and Withholding					
0480	Unearned Revenues					
0490	Other Current Liabilities					
<b>Total Liabilities</b>			<b>\$56,476</b>			
0950	Deferred Inflows of Resources					
<b>Fund Balances</b>						
0810	Nonspendable Fund Balance					
0820	Restricted Fund Balance		13,035,896			
0830	Committed Fund Balance					
0840	Assigned Fund Balance					
0850	Unassigned Fund Balance					
<b>Total Fund Balances</b>			<b>\$13,035,896</b>			
<b>Total Liabilities, Deferred Inflows Of Resources And Fund Balances</b>			<b>\$13,092,372</b>			

LEA : 113362303 Eastern Lancaster County SD

Printed 11/16/2023 8:47:04 AM

Amounts Expressed in Whole Dollars		<u>Total Governmental</u> <u>Funds</u>
<b>Liabilities And Deferred Inflows Of Resources And Fund Balances</b>		
<b>Liabilities</b>		
0400 Due to Other Funds		3,673,419
0411 Due to Other Governments		
0412 Due to Primary Government		
0413 Due to Component Unit		
0420 Accounts Payable		935,322
0430 Contracts Payable		
0440 Current Portion of Long-Term Debt		
0450 Short-Term Payables		
0461 Accrued Salaries and Benefits		5,463,884
0462 Payroll Deductions and Withholding		309,987
0480 Unearned Revenues		68,412
0490 Other Current Liabilities		6,000
<b>Total Liabilities</b>		<b>\$10,457,024</b>
0950 Deferred Inflows of Resources		169,842
<b>Fund Balances</b>		
0810 Nonspendable Fund Balance		
0820 Restricted Fund Balance		13,035,896
0830 Committed Fund Balance		7,947,638
0840 Assigned Fund Balance		
0850 Unassigned Fund Balance		3,589,727
<b>Total Fund Balances</b>		<b>\$24,573,261</b>
<b>Total Liabilities, Deferred Inflows Of Resources And Fund Balances</b>		<b>\$35,200,127</b>

Amounts Expressed in Whole Dollars	<u>General Fund</u> <u>(10)</u>	<u>Student Sponsored</u> <u>Activity Fund</u> <u>(21)</u>	<u>Public Purpose Trust</u> <u>(27)</u>	<u>Other Compt Approved</u> <u>(28)</u>	<u>Athletic / Activity</u> <u>(29)</u>
<b>Revenues</b>					
6000 Revenue from Local Sources	47,873,389				
7000 Revenue from State Sources	14,793,111				
8000 Revenue from Federal Sources	4,777,715				
<b>Total Revenues</b>	<b>\$67,444,215</b>				
<b>Expenditures</b>					
1000 Instruction	35,851,061				
2000 Support Services	24,344,986				
3000 Operation of Non-Instructional Services	1,291,685				
4000 Facilities Acquisition, Construction and Improvement Services	207,748				
5110 Debt Service					
5130 Refund of Prior Year Revenues / Receipts	21,651				
5140 Leases and Other Right-to-Use Arrangements					
<b>Total Expenditures</b>	<b>\$61,717,131</b>				
<b>Excess (Deficiency) Of Revenues Over Expenditures</b>	<b>\$5,727,084</b>				
<b>Other Financing Sources (Uses)</b>					
9110 Face Value of Bonds Issued					
9120 Proceeds from Refunding of Bonds					
9130 Bond Premiums					
9200 Proceeds from Extended Term Financing, Leases, and Other Right-to-Use Arrangements	100,950				
9300 Interfund Transfers - IN					
9400 Sale of or Compensation for Loss of Fixed Assets	1,035,112				
9710 Transfers from Component Units					
9720 Transfers from Primary Governments					
9910 Other Financing Sources Not Listed in the 9000 Series					
9990 Insurance Recoveries					
5120 Debt Service – Refunded Bonds					
5150 Bond Discounts					
5200 Interfund Transfers – Out	6,034,060				
5300 Transfers Out to Component Units/Primary Governments					
<b>Total Other Financing Sources (Uses)</b>	<b>(\$4,897,998)</b>				

Amounts Expressed in Whole Dollars		<u>Capital Reserve (690.</u> <u>1850)</u> <u>(31)</u>	<u>Capital Reserve (1431)</u> <u>(32)</u>	<u>Other Capital Projects</u> <u>Fund</u> <u>(39)</u>	<u>Debt Service</u> <u>(40)</u>	<u>Permanent</u> <u>(90)</u>
<b>Revenues</b>						
6000	Revenue from Local Sources		222,969			
7000	Revenue from State Sources					
8000	Revenue from Federal Sources					
<b>Total Revenues</b>			<b>\$222,969</b>			
<b>Expenditures</b>						
1000	Instruction					
2000	Support Services					
3000	Operation of Non-Instructional Services					
4000	Facilities Acquisition, Construction and Improvement Services		1,006,434			
5110	Debt Service					
5130	Refund of Prior Year Revenues / Receipts					
5140	Leases and Other Right-to-Use Arrangements					
<b>Total Expenditures</b>			<b>\$1,006,434</b>			
<b>Excess (Deficiency) Of Revenues Over Expenditures</b>			<b>(\$783,465)</b>			
<b>Other Financing Sources (Uses)</b>						
9110	Face Value of Bonds Issued					
9120	Proceeds from Refunding of Bonds					
9130	Bond Premiums					
9200	Proceeds from Extended Term Financing, Leases, and Other Right-to-Use Arrangements					
9300	Interfund Transfers - IN		6,025,000			
9400	Sale of or Compensation for Loss of Fixed Assets					
9710	Transfers from Component Units					
9720	Transfers from Primary Governments					
9910	Other Financing Sources Not Listed in the 9000 Series					
9990	Insurance Recoveries					
5120	Debt Service – Refunded Bonds					
5150	Bond Discounts					
5200	Interfund Transfers – Out					
5300	Transfers Out to Component Units/Primary Governments					
<b>Total Other Financing Sources (Uses)</b>			<b>\$6,025,000</b>			

Amounts Expressed in Whole Dollars		<u>Total Governmental Funds</u>
<b>Revenues</b>		
6000	Revenue from Local Sources	48,096,358
7000	Revenue from State Sources	14,793,111
8000	Revenue from Federal Sources	4,777,715
<b>Total Revenues</b>		<b>\$67,667,184</b>
<b>Expenditures</b>		
1000	Instruction	35,851,061
2000	Support Services	24,344,986
3000	Operation of Non-Instructional Services	1,291,685
4000	Facilities Acquisition, Construction and Improvement Services	1,214,182
5110	Debt Service	
5130	Refund of Prior Year Revenues / Receipts	21,651
5140	Leases and Other Right-to-Use Arrangements	
<b>Total Expenditures</b>		<b>\$62,723,565</b>
<b>Excess (Deficiency) Of Revenues Over Expenditures</b>		<b>\$4,943,619</b>
<b>Other Financing Sources (Uses)</b>		
9110	Face Value of Bonds Issued	
9120	Proceeds from Refunding of Bonds	
9130	Bond Premiums	
9200	Proceeds from Extended Term Financing, Leases, and Other Right-to-Use Arrangements	100,950
9300	Interfund Transfers - IN	6,025,000
9400	Sale of or Compensation for Loss of Fixed Assets	1,035,112
9710	Transfers from Component Units	
9720	Transfers from Primary Governments	
9910	Other Financing Sources Not Listed in the 9000 Series	
9990	Insurance Recoveries	
5120	Debt Service – Refunded Bonds	
5150	Bond Discounts	
5200	Interfund Transfers – Out	6,034,060
5300	Transfers Out to Component Units/Primary Governments	
<b>Total Other Financing Sources (Uses)</b>		<b>\$1,127,002</b>

Amounts Expressed in Whole Dollars		<u>General Fund</u> <u>(10)</u>	<u>Student Sponsored</u> <u>Activity Fund</u> <u>(21)</u>	<u>Public Purpose Trust</u> <u>(27)</u>	<u>Other Compt Approved</u> <u>(28)</u>	<u>Athletic / Activity</u> <u>(29)</u>
<b>Special And Extraordinary Items</b>						
9920	Special Items – Gains					
9930	Extraordinary Items – Gains					
5520	Special Items – Losses					
5530	Extraordinary Items – Losses					
<b>Net Change In Fund Balances</b>		<b>\$829,086</b>				
<b>Fund Balance</b>						
0001	Fund Balance - Beginning of Fiscal Year	10,708,280				
<b>Fund Balance - End Of Year</b>		<b>\$11,537,366</b>				

Amounts Expressed in Whole Dollars		<u>Capital Reserve (690.</u> <u>1850)</u> <u>(31)</u>	<u>Capital Reserve (1431)</u> <u>(32)</u>	<u>Other Capital Projects</u> <u>Fund</u> <u>(39)</u>	<u>Debt Service</u> <u>(40)</u>	<u>Permanent</u> <u>(90)</u>
<b>Special And Extraordinary Items</b>						
9920	Special Items – Gains					
9930	Extraordinary Items – Gains					
5520	Special Items – Losses					
5530	Extraordinary Items – Losses					
<b>Net Change In Fund Balances</b>			\$5,241,535			
<b>Fund Balance</b>						
0001	Fund Balance - Beginning of Fiscal Year		7,794,361			
<b>Fund Balance - End Of Year</b>			\$13,035,896			



Amounts Expressed in Whole Dollars		<u>Total Governmental</u> <u>Funds</u>
<b>Special And Extraordinary Items</b>		
9920	Special Items – Gains	
9930	Extraordinary Items – Gains	
5520	Special Items – Losses	
5530	Extraordinary Items – Losses	
<b>Net Change In Fund Balances</b>		<b>\$6,070,621</b>
<b>Fund Balance</b>		
0001	Fund Balance - Beginning of Fiscal Year	18,502,641
<b>Fund Balance - End Of Year</b>		<b>\$24,573,262</b>

Amounts Expressed in Whole Dollars		<u>Food Service</u> <u>(51)</u>	<u>Child Care</u> <u>Operations</u> <u>(52)</u>	<u>Other Enterprise</u> <u>(58)</u>	<u>TOTAL</u>	<u>Internal Service</u> <u>(60)</u>
<b>Assets And Deferred Outflows Of Resources</b>						
<b>Current Assets</b>						
0100	Cash and Cash Equivalents	1,825,230			1,825,230	9,193,444
0110	Investments					1,754,698
0130	Due From Other Funds					148,419
0141	Due From Other Governments					
0142	State Revenue Receivable					
0143	Federal Revenue Receivable					
0146	Due from Primary Government					
0147	Due from Component Unit					
0150	Other Receivables	8,927			8,927	67,072
0170	Inventories	84,970			84,970	
0180	Prepaid Expenses (Expenditures)					
0190	Other Current Assets					
<b>Total Current Assets</b>		<b>\$1,919,127</b>			<b>\$1,919,127</b>	<b>\$11,163,633</b>
<b>Noncurrent Assets</b>						
0211	Land					
0212	Site Improvements (Net)					
0220	Buildings and Building Improvements (Net)					
0230	Tangible Property and Intangible Right-To-Use Assets (Net)	142,104			142,104	
0250	Construction in Progress					
0260	Long Term Prepayments					
0290	Other Noncurrent Assets					
<b>Total Noncurrent Assets</b>		<b>\$142,104</b>			<b>\$142,104</b>	
0910	Deferred Outflows of Resources	137,110			137,110	
<b>Total Assets And Deferred Outflows Of Resources</b>		<b>\$2,198,341</b>			<b>\$2,198,341</b>	<b>\$11,163,633</b>

Amounts Expressed in Whole Dollars	<u>Food Service</u> <u>(51)</u>	<u>Child Care</u> <u>Operations</u> <u>(52)</u>	<u>Other Enterprise</u> <u>(58)</u>	<u>TOTAL</u>	<u>Internal Service</u> <u>(60)</u>
<b>Liabilities And Deferred Inflows Of Resources And Net Position</b>					
<b>Current Liabilities</b>					
0400 Due to Other Funds	89,297			89,297	
0411 Due to Other Governments					
0413 Due to Component Unit					
0420 Accounts Payable	814			814	
0430 Contracts Payable					
0440 Current Portion of Long-Term Debt					
0450 Short-Term Payables					
0461 Accrued Salaries and Benefits	96			96	336,923
0462 Payroll Deductions and Withholding					
0480 Unearned Revenues	67,477			67,477	
0490 Other Current Liabilities					
<b>Total Current Liabilities</b>	<b>\$157,684</b>			<b>\$157,684</b>	<b>\$336,923</b>
<b>Noncurrent Liabilities</b>					
0510 Bonds Payable					
0520 Extended-Term Financing Agreements Payable					
0530 Lease and Other Right-To-Use Obligations					
0540 Accumulated Compensated Absences					
0550 Authority Lease Obligations					
0560 Other Post-Employment Benefits (OPEB)	27,410			27,410	
0570 Net Pension Liability	661,626			661,626	
0599 Other Noncurrent Liabilities					
<b>Total Noncurrent Liabilities</b>	<b>\$689,036</b>			<b>\$689,036</b>	
<b>Total Liabilities</b>	<b>\$846,720</b>			<b>\$846,720</b>	<b>\$336,923</b>
0950 Deferred Inflows of Resources	23,421			23,421	
<b>Net Position</b>					
0791 Net Investment in Capital Assets	142,104			142,104	
0008 Restricted Net Position (0792 – 0798)					
0799 Unrestricted Net Position	1,186,096			1,186,096	10,826,710
<b>Total Net Position</b>	<b>\$1,328,200</b>			<b>\$1,328,200</b>	<b>\$10,826,710</b>
<b>Total Liabilities And Deferred Inflows Of Resources And Net Position</b>	<b>\$2,198,341</b>			<b>\$2,198,341</b>	<b>\$11,163,633</b>

Amounts Expressed in Whole Dollars		<u>Food Service</u> <u>(51)</u>	<u>Child Care Operations</u> <u>(52)</u>	<u>Other Enterprise</u> <u>(58)</u>	<u>TOTAL</u>	<u>Internal Service</u> <u>(60)</u>
<b>Operating Revenues</b>						
6600	Food Service Revenue	388,319			388,319	
0071	Charges for Services					5,618,642
0072	Other Operating Revenue					
<b>Total Operating Revenues</b>		<b>\$388,319</b>			<b>\$388,319</b>	<b>\$5,618,642</b>
<b>Operating Expenses</b>						
100	Personnel Services – Salaries	224,598			224,598	
200	Personnel Services – Employee Benefits	199,211			199,211	4,951,710
300	Purchased Professional and Technical Services	4,519			4,519	
400	Purchased Property Services	22,024			22,024	
500	Other Purchased Services	444,246			444,246	
600	Supplies	870,280			870,280	
740	Depreciation	25,265			25,265	
770	Amortization Expense					
810	Dues and Fees	218			218	221
880	Refunds of Prior Years' Receipts					
890	Miscellaneous Expenditures					
<b>Total Operating Expenses</b>		<b>\$1,790,361</b>			<b>\$1,790,361</b>	<b>\$4,951,931</b>
<b>Operating Income (Loss)</b>		<b>(\$1,402,042)</b>			<b>(\$1,402,042)</b>	<b>\$666,711</b>
<b>Non Operating Revenues (Expenses)</b>						
6500	Earnings on Investments	55,059			55,059	324,229
6830	Federal Revenue from Intermediary Sources					
6920	Contributions and Donations from Private Sources	5,944			5,944	
6930	Gains or Losses on Sale of Fixed Assets					
6991	Refunds of a Prior Year Expenditure					
7000	Revenue from State Sources	261,791			261,791	
8000	Revenue from Federal Sources	1,188,624			1,188,624	
9990	Insurance Recoveries					
820	Claims and Judgments Against the LEA					
830	Interest					
<b>TOTAL Non Operating Revenues (Expenses)</b>		<b>\$1,511,418</b>			<b>\$1,511,418</b>	<b>\$324,229</b>
<b>Income (Loss) Before Contributions And Transfers</b>		<b>\$109,376</b>			<b>\$109,376</b>	<b>\$990,940</b>

Amounts Expressed in Whole Dollars	<u>Food Service</u> <u>(51)</u>	<u>Child Care Operations</u> <u>(52)</u>	<u>Other Enterprise</u> <u>(58)</u>	<u>TOTAL</u>	<u>Internal Service</u> <u>(60)</u>
<b>Contributions, Transfers, and Special and Extraordinary Items</b>					
5200 Interfund Transfers – Out					
5300 Transfers Out to Component Units/Primary Governments					
5520 Special Items – Losses					
5530 Extraordinary Items – Losses					
9300 Interfund Transfers - IN	9,060			9,060	
9500 Capital Contributions					
9700 Transfers IN From Component Units/Primary Governments					
9920 Special Items – Gains					
9930 Extraordinary Items – Gains					
<b>Change In Net Position</b>	<b>\$118,436</b>			<b>\$118,436</b>	<b>\$990,940</b>
0002 Net Position - Beginning of Fiscal Year	1,209,763			1,209,763	9,835,770
0003 Accounting Changes / Residual Equity Transfers					
<b>Net Position - End Of Year</b>	<b>\$1,328,199</b>			<b>\$1,328,199</b>	<b>\$10,826,710</b>

LEA : 113362303 Eastern Lancaster County SD

Printed 11/16/2023 8:47:26 AM

Amounts Expressed in Whole Dollars	<u>Food Service</u> <u>(51)</u>	<u>Child Care Operations</u> <u>(52)</u>	<u>Other Enterprise</u> <u>(58)</u>	<u>TOTAL</u>	<u>Internal Service(60)</u>
<b>Cash Flows From Operating Activities</b>					
0011 Cash Receipts From Users	402,314			402,314	
0012 Cash Receipts From Assessments Made to Other Funds					5,429,874
0013 Cash Receipts From Earnings on Investments					
0014 Cash Receipts From Other Operating Revenue					
0015 Cash Payments To Employees For Services	381,181			381,181	
0016 Cash Payments For Insurance Claims					4,913,113
0017 Cash Payments To Suppliers For Goods and Services	1,150,175			1,150,175	
0018 Cash Payments For Other Operating Expenses					221
<b>Net Cash Provided By (Used For) Operating Activities</b>	<b>(\$1,129,042)</b>			<b>(\$1,129,042)</b>	<b>\$516,540</b>
<b>Cash Flows From Non-Capital Financing Activities</b>					
0021 Receipts From Local Sources - 6000	5,944			5,944	
0022 Receipts From State Sources - 7000	263,658			263,658	
0023 Receipts From Federal Sources -8000	1,127,389			1,127,389	
0024 Notes and Loans Received (Repaid)					
0025 Interest Paid on Notes/Loans - 5100-830					
0026 Operating Transfers In (Out)/Residual Equity Trans	9,060			9,060	
0027 Operating Transfers In (Out) Primary Government / Comp Unit					
0028 Receipts From Refund of Prior Year Expenditures - 6991					
0029 Special and Extraordinary Gains (losses)					
0030 Receipts from Insurance Recoveries -9990					
<b>Net Cash Prov By (Used for) Non-Capital Financing Activities</b>	<b>\$1,406,051</b>			<b>\$1,406,051</b>	
<b>Cash Flows From Capital and Related Financing Activities</b>					
0031 Payments For Fac Acq, Const, and Imp - 4000	(15,469)			(15,469)	
0032 Gain / (Loss) on Sale of Fixed Assets - 6930					
0033 Proceeds From Extended Term Financing - 9200					
0034 Principal Paid on Financing Agreements					
0035 Interest Paid on Financing Agreements - 5100-830					
0036 (Inc) Dec in Contributed Capital					
<b>Net Cash Prov By (Used for) Capital and Related Financing Activities</b>	<b>(\$15,469)</b>			<b>(\$15,469)</b>	
<b>Cash Flows From Investing Activities</b>					
0041 Earnings on Investments - 6500					324,229
0042 Purchase of Inv Securities / Deposits to Inv Pools	55,059			55,059	
0043 Receipts From Investment Pool Withdrawals					
0044 Proceeds from Sale and Maturity of Inv Securities					

LEA : 113362303      Eastern Lancaster County SD

Printed 11/16/2023 8:47:26 AM

0045 Loans Received (Paid)			
Net Cash Prov By (Used for) Investing Activities	\$55,059	\$55,059	\$324,229

LEA : 113362303 Eastern Lancaster County SD

Printed 11/16/2023 8:47:26 AM

	<u>Food Service</u> <u>(51)</u>	<u>Child Care Operations</u> <u>(52)</u>	<u>Other Enterprise</u> <u>(58)</u>	<u>TOTAL</u>	<u>Internal Service</u> <u>(60)</u>
<b>Net Increase (Decrease) in Cash Flows</b>	<b>316,599</b>			<b>316,599</b>	<b>840,769</b>
0004 Cash and Cash Equivalents Beginning of Year	1,508,631			1,508,631	8,352,675
<b>Cash and Cash Equivalents at Year End</b>	<b>\$1,825,230</b>			<b>\$1,825,230</b>	<b>\$9,193,444</b>
<b>Reconciliation of Operating Income (Loss) To Net Cash Provided by (Used For) Operating Activities</b>					
0005 Operating Income (Loss) per REP	(1,402,042)			(1,402,042)	666,711
<b>Adjustments</b>					
0051 Depreciation and Net Amortization	25,265			25,265	
0052 Provision for Uncollectible Accounts					
0053 Other Adjustments	118,117			118,117	
<b>Effect of Changes in Assets, Liabilities, Deferred Outflows and Deferred Inflows</b>					
0054 (Inc) Dec In Accounts Receivable (0120-0150)	1,386			1,386	(188,768)
0055 Advances to Other Funds					
0056 (Inc) Dec in Inventories (0170)	(20,369)			(20,369)	
0057 (Inc) Dec in Prepaid Expenses (0180)					
0058 (Inc) Dec in Other Current or Noncurrent Assets					
0064 Deferred Outflows (0910)	(19,476)			(19,476)	
0059 Inc (Dec) in Accounts Payable (0400-0450)	83,510			83,510	
0060 Inc (Dec) in Accrued Salaries/Benefits (0461)	(173)			(173)	38,597
0065 Inc (Dec) in Net Pension Liabilities (0570)	133,283			133,283	
0066 Inc (Dec) in Other Postemp Benefit Oblig (0560)	(2,978)			(2,978)	
0061 Inc (Dec) in Payroll Deductions/Withholding (0462)					
0062 Inc (Dec) in Unearned Revenue (0480)	22,463			22,463	
0063 Inc (Dec) in Other Current or Noncurrent Liabilities					
0067 Deferred Inflows (0950)	(68,028)			(68,028)	
<b>Total Adjustments</b>	<b>\$273,000</b>			<b>\$273,000</b>	<b>(\$150,171)</b>
<b>Cash Provided By (Used for) Total</b>	<b>(\$1,129,042)</b>			<b>(\$1,129,042)</b>	<b>\$516,540</b>



COMBINED STATEMENT OF CASH FLOWS  
SCHEDULE OF NONCASH INVESTING, CAPITAL, AND FINANCING ACTIVITIES

Explanation of Transaction and Balance Sheet Effect	Amount
USDA Donated Commodities	118,117
Total	\$118,117

LEA : 113362303 Eastern Lancaster County SD

Printed 11/16/2023 8:47:27 AM

Amounts Expressed in Whole Dollars		<u>Private Purpose Trust</u> <u>(71)</u>	<u>Investment Trust</u> <u>(72)</u>	<u>Pension Trust</u> <u>(73)</u>	<u>Student Activity Custodial</u> <u>(81)</u>
<b>Assets And Deferred Outflows Of Resources</b>					
<b>Assets</b>					
0100	Cash and Cash Equivalents	80,971			98,588
0110	Investments				
0130	Due From Other Funds				
0140	Due from Other Governments, Primary Government and Component Units				
0150	Other Receivables				3,056
0170	Inventories				
0180	Prepaid Expenses (Expenditures)				
0190	Other Current Assets				
0220	Buildings and Building Improvements (Net)				
0230	Tangible Property and Intangible Right-To-Use Assets (Net)				
<b>Total Assets</b>		<b>\$80,971</b>			<b>\$101,644</b>
0910	Deferred Outflows of Resources				
<b>Total Assets And Deferred Outflows Of Resources</b>		<b>\$80,971</b>			<b>\$101,644</b>

LEA : 113362303 Eastern Lancaster County SD

Printed 11/16/2023 8:47:27 AM

Amounts Expressed in Whole Dollars		<u>Other Custodial</u> <u>(89)</u>	<u>Fiduciary Component Units</u> <u>(98)</u>	<u>Total Fiduciary Funds</u>
<b>Assets And Deferred Outflows Of Resources</b>				
<b>Assets</b>				
0100	Cash and Cash Equivalents			179,559
0110	Investments			
0130	Due From Other Funds			
0140	Due from Other Governments, Primary Government and Component Units			
0150	Other Receivables			3,056
0170	Inventories			
0180	Prepaid Expenses (Expenditures)			
0190	Other Current Assets			
0220	Buildings and Building Improvements (Net)			
0230	Tangible Property and Intangible Right-To-Use Assets (Net)			
<b>Total Assets</b>				<b>\$182,615</b>
0910	Deferred Outflows of Resources			
<b>Total Assets And Deferred Outflows Of Resources</b>				<b>\$182,615</b>

LEA : 113362303 Eastern Lancaster County SD

Printed 11/16/2023 8:47:27 AM

Amounts Expressed in Whole Dollars		<u>Private Purpose Trust</u>	<u>Investment Trust</u>	<u>Pension Trust</u>	<u>Student Activity Custodial</u>
		<u>(71)</u>	<u>(72)</u>	<u>(73)</u>	<u>(81)</u>
<b>Liabilities, Deferred Inflows Of Resources And Net Position</b>					
<b>Liabilities</b>					
0400	Due to Other Funds				
0410	Due to Other Governments, Primary Government and Component Units				
0420	Accounts Payable				960
0430	Contracts Payable				
0450	Short-Term Payables				
0460	Payroll Accruals and Withholdings				
0480	Unearned Revenues				
0490	Other Current Liabilities				
<b>Total Liabilities</b>					<b>\$960</b>
0950	Deferred Inflows of Resources				
<b>Net Position</b>					
0791	Net Investment in Capital Assets				
0009	Restricted Net Position (0792 – 0798)	80,971			100,684
0799	Unrestricted Net Position				
<b>Total Net Position</b>		<b>\$80,971</b>			<b>\$100,684</b>
<b>Total Liabilities, Deferred Inflows Of Resources And Net Position</b>		<b>\$80,971</b>			<b>\$101,644</b>

LEA : 113362303 Eastern Lancaster County SD

Printed 11/16/2023 8:47:27 AM

Amounts Expressed in Whole Dollars		<u>Other Custodial</u>	<u>Fiduciary Component Units</u>	<u>Total Fiduciary Funds</u>
		(89)	(98)	
<b>Liabilities, Deferred Inflows Of Resources And Net Position</b>				
<b>Liabilities</b>				
0400	Due to Other Funds			
0410	Due to Other Governments, Primary Government and Component Units			
0420	Accounts Payable			960
0430	Contracts Payable			
0450	Short-Term Payables			
0460	Payroll Accruals and Withholdings			
0480	Unearned Revenues			
0490	Other Current Liabilities			
<b>Total Liabilities</b>				<b>\$960</b>
0950	Deferred Inflows of Resources			
<b>Net Position</b>				
0791	Net Investment in Capital Assets			
0009	Restricted Net Position (0792 – 0798)			181,655
0799	Unrestricted Net Position			
<b>Total Net Position</b>				<b>\$181,655</b>
<b>Total Liabilities, Deferred Inflows Of Resources And Net Position</b>				<b>\$182,615</b>

Amounts Expressed in Whole Dollars	<u>Private Purpose Trust</u> <u>(71)</u>	<u>Investment Trust</u> <u>(72)</u>	<u>Pension Trust</u> <u>(73)</u>	<u>Student Activity</u> <u>Custodial</u> <u>(81)</u>	<u>Other Custodial</u> <u>(89)</u>	<u>Fiduciary Component</u> <u>Units</u> <u>(98)</u>
<b>Additions</b>						
0091 Gifts and Contributions	1,785					
0095 Net Investment Earnings	2,818			3,485		
0092 Other Additions				109,462		
<b>Deductions</b>						
0093 Scholarships Awarded	1,012					
0094 Other Deductions				94,158		
<b>Change In Net Position</b>	<b>\$3,591</b>			<b>\$18,789</b>		
0006 Net Position – Beginning of Fiscal Year	77,380			81,895		
0007 Net Position Held in Trust for Pension Benefits						
<b>Net Position - End of Fiscal Year</b>	<b>\$80,971</b>			<b>\$100,684</b>		

Amounts Expressed in Whole Dollars		<u>Total Fiduciary</u> <u>Funds</u>
<b>Additions</b>		
0091	Gifts and Contributions	1,785
0095	Net Investment Earnings	6,303
0092	Other Additions	109,462
<b>Deductions</b>		
0093	Scholarships Awarded	1,012
0094	Other Deductions	94,158
<b>Change In Net Position</b>		<b>\$22,380</b>
0006	Net Position – Beginning of Fiscal Year	159,275
0007	Net Position Held in Trust for Pension Benefits	
<b>Net Position - End of Fiscal Year</b>		<b>\$181,655</b>

	Revenue Reported In Current Year	Current Year Tax Accrual	Prior Year Tax Accrual	Taxes Collected In Current Year
<b>Revenue from Local Sources</b>				
6111 Current Real Estate Taxes	36,087,625.95		312.92	36,087,938.87
6112 Interim Real Estate Taxes	239,996.98	921.47	23,225.33	262,300.84
6113 Public Utility Realty Taxes	39,028.40			39,028.40
6114 Payments in Lieu of Current Taxes - State / Local	198,147.55			198,147.55
6143 Current Act 511 Local Services Taxes	179,942.15	39,530.32	40,762.33	181,174.16
6151 Current Act 511 Earned Income Taxes	5,231,686.56	820,816.78	951,798.52	5,362,668.30
6153 Current Act 511 Real Estate Transfer Taxes	791,947.77	52,403.03	80,712.33	820,257.07
6411 Delinquent Real Estate Taxes	448,640.39	110,472.13	82,687.47	420,855.73
6500 Earnings on Investments	1,053,653.25			
6700 Revenues from LEA Activities	85,712.49			
6831 Federal Revenue Received from Other Pennsylvania Public LEAs	8,917.64			
6832 Federal IDEA Revenue Received as Pass Through	594,926.00			
6833 Federal ARP Act IDEA Revenue Received as Pass Through	68,896.30			
6910 Rentals	32,352.82			
6920 Contributions and Donations from Private Sources	26,550.00			
6942 Summer School Tuition	(3,420.00)			
6944 Receipts from Other LEAs in Pennsylvania - Education	2,350,472.12			
6961 Transportation Services Provided Other Pennsylvania LEAs	23,031.00			
6962 Other Services Provided Other Pennsylvania LEAs	367,431.96			
6991 Refunds of a Prior Year Expenditure	22,472.45			
6992 Energy Efficiency Revenues and Incentives	1,227.95			
6999 Other Revenues Not Specified Above	24,149.39			
<b>TOTAL Revenue from Local Sources</b>	<b>\$47,873,389.12</b>	<b>\$1,024,143.73</b>	<b>\$1,179,498.90</b>	<b>\$43,372,370.92</b>



	Revenue Reported In Current Year			
<b><u>Revenue from State Sources</u></b>				
7111 Basic Education Funding-Formula	5,418,109.80			
7112 Basic Education Funding-Social Security	833,153.52			
7160 Tuition for Orphans Subsidy	41,043.03			
7220 Vocational Education	44,891.87			
7250 Migratory Children	200.00			
7271 Special Education funds for School-Aged Pupils	1,749,282.39			
7311 Pupil Transportation Subsidy	976,139.77			
7312 Nonpublic and Charter School Pupil Transportation Subsidy	177,870.00			
7320 Rental and Sinking Fund Payments / Building Reimbursement Subsidy	42,526.84			
7330 Health Services (Medical, Dental, Nurse, Act 25)	80,774.01			
7340 State Property Tax Reduction Allocation	561,676.02			
7361 School Safety and Security Grants	212,590.25			
7505 Ready to Learn Block Grant	247,418.00			
7509 Supplemental Equipment Grants	8,240.63			
7820 State Share of Retirement Contributions	4,399,194.63			
<b>TOTAL Revenue from State Sources</b>	<b>\$14,793,110.76</b>			

	Revenue Reported In Current Year			
<b><u>Revenue from Federal Sources</u></b>				
8514 Title I - Improving the Academic Achievement of the Disadvantaged	1,053,102.90			
8515 Title II - Preparing, Training, and Recruiting High Quality Teachers and Principals	148,919.42			
8516 Title III - Language Instruction for English Learners and Immigrant Students	16,802.00			
8517 Title IV - 21st Century Schools	105,603.70			
8743 ESSER II - Elementary and Secondary School Emergency Relief Fund	770,819.86			
8744 ARP ESSER - Elementary and Secondary School Emergency Relief Fund	2,100,440.17			
8747 ARP ECF - Emergency Connectivity Fund	5,201.50			
8752 ARP ESSER Summer Programs	20,826.89			
8810 School-Based Access Medicaid Reimbursement Program (SBAP) Reimbursements (Access)	529,657.20			
8820 Medical Assistance Reimbursement for Administrative Claiming (Quarterly) Program	26,341.47			
<b>TOTAL Revenue from Federal Sources</b>	<b>\$4,777,715.11</b>			

	Revenue Reported In Current Year			
<b><u>Other Financing Sources</u></b>				
9220 Leases and Other Right-to-Use Arrangements	100,950.00			
9400 Sale of or Compensation for Loss of Fixed Assets	1,035,111.97			
<b>TOTAL Other Financing Sources</b>	<b>\$1,136,061.97</b>			
<b>TOTAL FROM ALL SOURCES</b>	<b>\$68,580,276.96</b>	<b>\$1,024,143.73</b>	<b>\$1,179,498.90</b>	<b>\$43,372,370.92</b>

LEA : 113362303 Eastern Lancaster County SD

Printed 11/16/2023 8:47:31 AM

	<u>General Fund (10)</u>	<u>Student Sponsored Activity Fund (21)</u>	<u>Public Purpose Trust (27)</u>	<u>Other Compt Approved (28)</u>	<u>Athletic / Activity (29)</u>	<u>Capital Reserve (690, 1850) (31)</u>
<b>6000 Revenue from Local Sources</b>						
6111 Current Real Estate Taxes	36,087,625.95					
6112 Interim Real Estate Taxes	239,996.98					
6113 Public Utility Realty Taxes	39,028.40					
6114 Payments in Lieu of Current Taxes - State / Local	198,147.55					
6143 Current Act 511 Local Services Taxes	179,942.15					
6151 Current Act 511 Earned Income Taxes	5,231,686.56					
6153 Current Act 511 Real Estate Transfer Taxes	791,947.77					
6411 Delinquent Real Estate Taxes	448,640.39					
6500 Earnings on Investments	1,053,653.25					
6700 Revenues from LEA Activities	85,712.49					
6831 Federal Revenue Received from Other Pennsylvania Public LEAs	8,917.64					
6832 Federal IDEA Revenue Received as Pass Through	594,926.00					
6833 Federal ARP Act IDEA Revenue Received as Pass Through	68,896.30					
6910 Rentals	32,352.82					
6920 Contributions and Donations from Private Sources	26,550.00					
6942 Summer School Tuition	(3,420.00)					
6944 Receipts from Other LEAs in Pennsylvania - Education	2,350,472.12					
6961 Transportation Services Provided Other Pennsylvania LEAs	23,031.00					
6962 Other Services Provided Other Pennsylvania LEAs	367,431.96					
6991 Refunds of a Prior Year Expenditure	22,472.45					
6992 Energy Efficiency Revenues and Incentives	1,227.95					
6999 Other Revenues Not Specified Above	24,149.39					
<b>6000 Total Revenue from Local Sources</b>	<b>\$47,873,389.12</b>					
<b>7000 Revenue from State Sources</b>						
7111 Basic Education Funding-Formula	5,418,109.80					
7112 Basic Education Funding-Social Security	833,153.52					
7160 Tuition for Orphans Subsidy	41,043.03					
7220 Vocational Education	44,891.87					
7250 Migratory Children	200.00					
7271 Special Education funds for School-Aged Pupils	1,749,282.39					
7311 Pupil Transportation Subsidy	976,139.77					
7312 Nonpublic and Charter School Pupil Transportation Subsidy	177,870.00					
7320 Rental and Sinking Fund Payments / Building Reimbursement Subsidy	42,526.84					
7330 Health Services (Medical, Dental, Nurse, Act 25)	80,774.01					
7340 State Property Tax Reduction Allocation	561,676.02					

LEA : 113362303 Eastern Lancaster County SD

Printed 11/16/2023 8:47:31 AM

	<u>Capital Reserve</u> <u>(1431) (32)</u>	<u>Other Capital</u> <u>Projects Fund (39)</u>	<u>Debt Service (40)</u>	<u>Permanent (90)</u>	<u>Total</u>
<b>6000 Revenue from Local Sources</b>					
6111 Current Real Estate Taxes					36,087,625.95
6112 Interim Real Estate Taxes					239,996.98
6113 Public Utility Realty Taxes					39,028.40
6114 Payments in Lieu of Current Taxes - State / Local					198,147.55
6143 Current Act 511 Local Services Taxes					179,942.15
6151 Current Act 511 Earned Income Taxes					5,231,686.56
6153 Current Act 511 Real Estate Transfer Taxes					791,947.77
6411 Delinquent Real Estate Taxes					448,640.39
6500 Earnings on Investments	222,969.33				1,276,622.58
6700 Revenues from LEA Activities					85,712.49
6831 Federal Revenue Received from Other Pennsylvania Public LEAs					8,917.64
6832 Federal IDEA Revenue Received as Pass Through					594,926.00
6833 Federal ARP Act IDEA Revenue Received as Pass Through					68,896.30
6910 Rentals					32,352.82
6920 Contributions and Donations from Private Sources					26,550.00
6942 Summer School Tuition					(3,420.00)
6944 Receipts from Other LEAs in Pennsylvania - Education					2,350,472.12
6961 Transportation Services Provided Other Pennsylvania LEAs					23,031.00
6962 Other Services Provided Other Pennsylvania LEAs					367,431.96
6991 Refunds of a Prior Year Expenditure					22,472.45
6992 Energy Efficiency Revenues and Incentives					1,227.95
6999 Other Revenues Not Specified Above					24,149.39
<b>6000 Total Revenue from Local Sources</b>	<b>\$222,969.33</b>				<b>\$48,096,358.45</b>
<b>7000 Revenue from State Sources</b>					
7111 Basic Education Funding-Formula					5,418,109.80
7112 Basic Education Funding-Social Security					833,153.52
7160 Tuition for Orphans Subsidy					41,043.03
7220 Vocational Education					44,891.87
7250 Migratory Children					200.00
7271 Special Education funds for School-Aged Pupils					1,749,282.39
7311 Pupil Transportation Subsidy					976,139.77
7312 Nonpublic and Charter School Pupil Transportation Subsidy					177,870.00
7320 Rental and Sinking Fund Payments / Building Reimbursement Subsidy					42,526.84
7330 Health Services (Medical, Dental, Nurse, Act 25)					80,774.01
7340 State Property Tax Reduction Allocation					561,676.02

LEA : 113362303 Eastern Lancaster County SD

Printed 11/16/2023 8:47:31 AM

	<u>General Fund (10)</u>	<u>Student Sponsored Activity Fund (21)</u>	<u>Public Purpose Trust (27)</u>	<u>Other Compt Approved (28)</u>	<u>Athletic / Activity (29)</u>	<u>Capital Reserve (690, 1850) (31)</u>
<b>7000 Revenue from State Sources</b>						
7361 School Safety and Security Grants	212,590.25					
7505 Ready to Learn Block Grant	247,418.00					
7509 Supplemental Equipment Grants	8,240.63					
7820 State Share of Retirement Contributions	4,399,194.63					
<b>7000 Total Revenue from State Sources</b>	<b>\$14,793,110.76</b>					
<b>8000 Revenue from Federal Sources</b>						
8514 Title I - Improving the Academic Achievement of the Disadvantaged	1,053,102.90					
8515 Title II - Preparing, Training, and Recruiting High Quality Teachers and Principals	148,919.42					
8516 Title III - Language Instruction for English Learners and Immigrant Students	16,802.00					
8517 Title IV - 21st Century Schools	105,603.70					
8743 ESSER II - Elementary and Secondary School Emergency Relief Fund	770,819.86					
8744 ARP ESSER - Elementary and Secondary School Emergency Relief Fund	2,100,440.17					
8747 ARP ECF - Emergency Connectivity Fund	5,201.50					
8752 ARP ESSER Summer Programs	20,826.89					
8810 School-Based Access Medicaid Reimbursement Program (SBAP) Reimbursements (Access)	529,657.20					
8820 Medical Assistance Reimbursement for Administrative Claiming (Quarterly) Program	26,341.47					
<b>8000 Total Revenue from Federal Sources</b>	<b>\$4,777,715.11</b>					
<b>9000 Other Financing Sources</b>						
9220 Leases and Other Right-to-Use Arrangements	100,950.00					
9310 General Fund Transfers						
9400 Sale of or Compensation for Loss of Fixed Assets	1,035,111.97					
<b>9000 Total Other Financing Sources</b>	<b>\$1,136,061.97</b>					
<b>Total From All Sources</b>	<b>\$68,580,276.96</b>					

LEA : 113362303 Eastern Lancaster County SD

Printed 11/16/2023 8:47:31 AM

	<u>Capital Reserve</u> <u>(1431) (32)</u>	<u>Other Capital</u> <u>Projects Fund (39)</u>	<u>Debt Service (40)</u>	<u>Permanent (90)</u>	<u>Total</u>
<b>7000 Revenue from State Sources</b>					
7361 School Safety and Security Grants					212,590.25
7505 Ready to Learn Block Grant					247,418.00
7509 Supplemental Equipment Grants					8,240.63
7820 State Share of Retirement Contributions					4,399,194.63
<b>7000 Total Revenue from State Sources</b>					<b>\$14,793,110.76</b>
<b>8000 Revenue from Federal Sources</b>					
8514 Title I - Improving the Academic Achievement of the Disadvantaged					1,053,102.90
8515 Title II - Preparing, Training, and Recruiting High Quality Teachers and Principals					148,919.42
8516 Title III - Language Instruction for English Learners and Immigrant Students					16,802.00
8517 Title IV - 21st Century Schools					105,603.70
8743 ESSER II - Elementary and Secondary School Emergency Relief Fund					770,819.86
8744 ARP ESSER - Elementary and Secondary School Emergency Relief Fund					2,100,440.17
8747 ARP ECF - Emergency Connectivity Fund					5,201.50
8752 ARP ESSER Summer Programs					20,826.89
8810 School-Based Access Medicaid Reimbursement Program (SBAP) Reimbursements (Access)					529,657.20
8820 Medical Assistance Reimbursement for Administrative Claiming (Quarterly) Program					26,341.47
<b>8000 Total Revenue from Federal Sources</b>					<b>\$4,777,715.11</b>
<b>9000 Other Financing Sources</b>					
9220 Leases and Other Right-to-Use Arrangements					100,950.00
9310 General Fund Transfers	6,025,000.00				6,025,000.00
9400 Sale of or Compensation for Loss of Fixed Assets					1,035,111.97
<b>9000 Total Other Financing Sources</b>	<b>\$6,025,000.00</b>				<b>\$7,161,061.97</b>
<b>Total From All Sources</b>	<b>\$6,247,969.33</b>				<b>\$74,828,246.29</b>

LEA : 113362303 Eastern Lancaster County SD

Printed 11/16/2023 8:47:33 AM

	<u>General Fund (10)</u>	<u>Student Sponsored Activity Fund (21)</u>	<u>Public Purpose Trust (27)</u>	<u>Other Compt Approved (28)</u>	<u>Athletic / Activity (29)</u>	<u>Capital Reserve (690. 1850) (31)</u>
Revenue from Local Sources	47,873,389.12					
Revenue from State Sources	14,793,110.76					
Revenue from Federal Sources	4,777,715.11					
Other Financing Sources	1,136,061.97					
Total From All Sources	\$68,580,276.96					



	<u>Capital Reserve (1431)</u> <u>(32)</u>	<u>Other Capital Projects</u> <u>Fund (39)</u>	<u>Debt Service (40)</u>	<u>Permanent (90)</u>	<u>Total</u>
Revenue from Local Sources	222,969.33				48,096,358.45
Revenue from State Sources					14,793,110.76
Revenue from Federal Sources					4,777,715.11
Other Financing Sources	6,025,000.00				7,161,061.97
Total From All Sources	\$6,247,969.33				\$74,828,246.29

LEA : 113362303 Eastern Lancaster County SD

Printed 11/16/2023 8:47:38 AM

General Fund (10)

1000 Instruction	Total
100 <u>Personnel Services – Salaries</u>	
100 Personnel Services – Salaries	16,486,032.40
<b>Total Personnel Services – Salaries</b>	<b>\$16,486,032.40</b>
200 <u>Personnel Services – Employee Benefits</u>	
210 Group Insurance – Contracted Provider	53,223.01
220 Social Security Contributions	1,229,968.79
230 PSERS Retirement Contributions	5,800,969.46
260 Workers' Compensation	77,816.39
270 Group Insurance – Self-Insurance	3,692,182.95
291 Other Retirement Plans	3,150.00
<b>Total Personnel Services – Employee Benefits</b>	<b>\$10,857,310.60</b>
300 <u>Purchased Professional and Technical Services</u>	
322 Professional Educational Services – Ius	991,953.20
329 Professional Educational Services – Other	2,596,462.32
330 Other Professional Services	274,979.93
360 Employee Training and Development Services	24,056.42
<b>Total Purchased Professional and Technical Services</b>	<b>\$3,887,451.87</b>
400 <u>Purchased Property Services</u>	
430 Repairs and Maintenance Services	8,365.05
<b>Total Purchased Property Services</b>	<b>\$8,365.05</b>
500 <u>Other Purchased Services</u>	
510 Student Transportation Services	89,277.26
530 Communications	9,653.81
550 Printing and Binding	5,909.47
561 Tuition To Other School Districts Within the State	120,206.77
562 Tuition To Pennsylvania Charter Schools	1,611,540.77
564 Tuition To Career and Technology Centers	1,031,699.83
568 Tuition To Private Residential Rehabilitative Institutions (PRRI) [In-State] and Detention Centers	69,953.02
569 Tuition – Other	137,949.90
580 Travel	1,671.17
594 IU Payment By Withholding for Institutionalized Children's Programs – Special Classes	238.75
<b>Total Other Purchased Services</b>	<b>\$3,078,100.75</b>
600 <u>Supplies</u>	
610 General Supplies	375,675.75
630 Food	2,118.27
640 Books and Periodicals	327,316.43
650 Supplies & Fees – Technology Related	738,765.78
<b>Total Supplies</b>	<b>\$1,443,876.23</b>
700 <u>Property</u>	
752 Capital Equipment – Original and Additional	72,500.00
<b>Total Property</b>	<b>\$72,500.00</b>

LEA : 113362303     Eastern Lancaster County SD

Printed 11/16/2023 8:47:38 AM

General Fund (10)		
1000 Instruction		<u>Total</u>
800 <u>Other Objects</u>		
810 Dues and Fees		7,415.25
890 Miscellaneous Expenditures		10,009.00
Total Other Objects		\$17,424.25
Total 1000 Instruction		\$35,851,061.15

General Fund (10)

1100 Regular Programs – Elementary / Secondary

	Elementary	Secondary	Federal	Total
<b>100 <u>Personnel Services – Salaries</u></b>				
100 Personnel Services – Salaries	6,109,572.50	6,191,187.79	1,286,907.48	13,587,667.77
<b>Total Personnel Services – Salaries</b>	<b>\$6,109,572.50</b>	<b>\$6,191,187.79</b>	<b>\$1,286,907.48</b>	<b>\$13,587,667.77</b>
<b>200 <u>Personnel Services – Employee Benefits</u></b>				
210 Group Insurance – Contracted Provider	22,017.13	21,813.11	960.93	44,791.17
220 Social Security Contributions	455,652.11	462,141.26	95,799.00	1,013,592.37
230 PSERS Retirement Contributions	2,348,530.02	2,215,612.48	226,481.39	4,790,623.89
260 Workers' Compensation	27,569.36	27,896.21	8,098.43	63,564.00
270 Group Insurance – Self-Insurance	1,256,756.47	1,508,158.05	202,091.83	2,967,006.35
291 Other Retirement Plans		3,150.00		3,150.00
<b>Total Personnel Services – Employee Benefits</b>	<b>\$4,110,525.09</b>	<b>\$4,238,771.11</b>	<b>\$533,431.58</b>	<b>\$8,882,727.78</b>
<b>300 <u>Purchased Professional and Technical Services</u></b>				
329 Professional Educational Services – Other	416,265.78	285,654.19	16,802.00	718,721.97
330 Other Professional Services	1,254.40	1,166.31		2,420.71
<b>Total Purchased Professional and Technical Services</b>	<b>\$417,520.18</b>	<b>\$286,820.50</b>	<b>\$16,802.00</b>	<b>\$721,142.68</b>
<b>400 <u>Purchased Property Services</u></b>				
430 Repairs and Maintenance Services	3,151.93	5,213.12		8,365.05
<b>Total Purchased Property Services</b>	<b>\$3,151.93</b>	<b>\$5,213.12</b>		<b>\$8,365.05</b>
<b>500 <u>Other Purchased Services</u></b>				
510 Student Transportation Services	39,776.14	2,898.60		42,674.74
530 Communications	5,089.95	4,021.26		9,111.21
550 Printing and Binding	4,984.47	519.00		5,503.47
561 Tuition To Other School Districts Within the State	9,848.02	22,465.65		32,313.67
562 Tuition To Pennsylvania Charter Schools	217,688.35	600,284.32		817,972.67
568 Tuition To Private Residential Rehabilitative Institutions (PRRI) [In-State] and Detention Centers		1,850.50		1,850.50
580 Travel	264.49	263.60		528.09
<b>Total Other Purchased Services</b>	<b>\$277,651.42</b>	<b>\$632,302.93</b>		<b>\$909,954.35</b>
<b>600 <u>Supplies</u></b>				
610 General Supplies	131,221.28	188,685.85	13,404.70	333,311.83
630 Food	1,502.64	520.36	76.30	2,099.30
640 Books and Periodicals	20,983.49	7,845.26	225,967.06	254,795.81
650 Supplies & Fees – Technology Related	175,319.83	436,615.93	98,149.47	710,085.23
<b>Total Supplies</b>	<b>\$329,027.24</b>	<b>\$633,667.40</b>	<b>\$337,597.53</b>	<b>\$1,300,292.17</b>
<b>700 <u>Property</u></b>				
752 Capital Equipment – Original and Additional		72,500.00		72,500.00
<b>Total Property</b>		<b>\$72,500.00</b>		<b>\$72,500.00</b>
<b>800 <u>Other Objects</u></b>				
810 Dues and Fees	284.00	585.00		869.00
890 Miscellaneous Expenditures	423.00			423.00
<b>Total Other Objects</b>	<b>\$707.00</b>	<b>\$585.00</b>		<b>\$1,292.00</b>
<b>Total 1100 Regular Programs – Elementary / Secondary</b>	<b>\$11,248,155.36</b>	<b>\$12,061,047.85</b>	<b>\$2,174,738.59</b>	<b>\$25,483,941.80</b>

LEA : 113362303 Eastern Lancaster County SD

Printed 11/16/2023 8:47:38 AM

General Fund (10)

1110 Regular Programs

	Elementary	Secondary	Federal	Total
<b>100 <u>Personnel Services – Salaries</u></b>				
100 Personnel Services – Salaries	6,109,572.50	6,191,187.79	561,025.89	12,861,786.18
<b>Total Personnel Services – Salaries</b>	<b>\$6,109,572.50</b>	<b>\$6,191,187.79</b>	<b>\$561,025.89</b>	<b>\$12,861,786.18</b>
<b>200 <u>Personnel Services – Employee Benefits</u></b>				
210 Group Insurance – Contracted Provider	22,017.13	21,813.11	381.25	44,211.49
220 Social Security Contributions	455,652.11	462,141.26	42,115.71	959,909.08
230 PSERS Retirement Contributions	2,348,530.02	2,215,612.48	98,585.67	4,662,728.17
260 Workers' Compensation	27,569.36	27,896.21	3,547.55	59,013.12
270 Group Insurance – Self-Insurance	1,256,756.47	1,508,158.05	89,455.40	2,854,369.92
291 Other Retirement Plans		3,150.00		3,150.00
<b>Total Personnel Services – Employee Benefits</b>	<b>\$4,110,525.09</b>	<b>\$4,238,771.11</b>	<b>\$234,085.58</b>	<b>\$8,583,381.78</b>
<b>300 <u>Purchased Professional and Technical Services</u></b>				
329 Professional Educational Services – Other	416,265.78	285,654.19		701,919.97
330 Other Professional Services	1,254.40	1,166.31		2,420.71
<b>Total Purchased Professional and Technical Services</b>	<b>\$417,520.18</b>	<b>\$286,820.50</b>		<b>\$704,340.68</b>
<b>400 <u>Purchased Property Services</u></b>				
430 Repairs and Maintenance Services	3,151.93	5,213.12		8,365.05
<b>Total Purchased Property Services</b>	<b>\$3,151.93</b>	<b>\$5,213.12</b>		<b>\$8,365.05</b>
<b>500 <u>Other Purchased Services</u></b>				
510 Student Transportation Services	39,776.14	2,898.60		42,674.74
530 Communications	5,089.95	4,021.26		9,111.21
550 Printing and Binding	4,984.47	519.00		5,503.47
561 Tuition To Other School Districts Within the State	9,848.02	22,465.65		32,313.67
562 Tuition To Pennsylvania Charter Schools	217,688.35	600,284.32		817,972.67
568 Tuition To Private Residential Rehabilitative Institutions (PRRI) [In-State] and Detention Centers		1,850.50		1,850.50
580 Travel	264.49	263.60		528.09
<b>Total Other Purchased Services</b>	<b>\$277,651.42</b>	<b>\$632,302.93</b>		<b>\$909,954.35</b>
<b>600 <u>Supplies</u></b>				
610 General Supplies	131,221.28	188,685.85		319,907.13
630 Food	1,502.64	520.36		2,023.00
640 Books and Periodicals	20,983.49	7,845.26	225,967.06	254,795.81
650 Supplies & Fees – Technology Related	175,319.83	436,615.93	78,723.68	690,659.44
<b>Total Supplies</b>	<b>\$329,027.24</b>	<b>\$633,667.40</b>	<b>\$304,690.74</b>	<b>\$1,267,385.38</b>
<b>700 <u>Property</u></b>				
752 Capital Equipment – Original and Additional		72,500.00		72,500.00
<b>Total Property</b>		<b>\$72,500.00</b>		<b>\$72,500.00</b>
<b>800 <u>Other Objects</u></b>				
810 Dues and Fees	284.00	585.00		869.00
890 Miscellaneous Expenditures	423.00			423.00
<b>Total Other Objects</b>	<b>\$707.00</b>	<b>\$585.00</b>		<b>\$1,292.00</b>
<b>Total 1110 Regular Programs</b>	<b>\$11,248,155.36</b>	<b>\$12,061,047.85</b>	<b>\$1,099,802.21</b>	<b>\$24,409,005.42</b>

General Fund (10)

1190 Federally-Funded Regular Programs	<u>Elementary</u>	<u>Secondary</u>	<u>Federal</u>	<u>Total</u>
<b>100 <u>Personnel Services – Salaries</u></b>				
100 Personnel Services – Salaries			725,881.59	725,881.59
<b>Total Personnel Services – Salaries</b>			<b>\$725,881.59</b>	<b>\$725,881.59</b>
<b>200 <u>Personnel Services – Employee Benefits</u></b>				
210 Group Insurance – Contracted Provider			579.68	579.68
220 Social Security Contributions			53,683.29	53,683.29
230 PSERS Retirement Contributions			127,895.72	127,895.72
260 Workers' Compensation			4,550.88	4,550.88
270 Group Insurance – Self-Insurance			112,636.43	112,636.43
<b>Total Personnel Services – Employee Benefits</b>			<b>\$299,346.00</b>	<b>\$299,346.00</b>
<b>300 <u>Purchased Professional and Technical Services</u></b>				
329 Professional Educational Services – Other			16,802.00	16,802.00
<b>Total Purchased Professional and Technical Services</b>			<b>\$16,802.00</b>	<b>\$16,802.00</b>
<b>600 <u>Supplies</u></b>				
610 General Supplies			13,404.70	13,404.70
630 Food			76.30	76.30
650 Supplies & Fees – Technology Related			19,425.79	19,425.79
<b>Total Supplies</b>			<b>\$32,906.79</b>	<b>\$32,906.79</b>
<b>Total 1190 Federally-Funded Regular Programs</b>			<b>\$1,074,936.38</b>	<b>\$1,074,936.38</b>

LEA : 113362303 Eastern Lancaster County SD

Printed 11/16/2023 8:47:38 AM

General Fund (10)

1200 Special Programs – Elementary / Secondary

	Elementary	Secondary	Federal	Total
<b>100 Personnel Services – Salaries</b>				
100 Personnel Services – Salaries	1,102,638.78	1,239,236.45	394,739.58	2,736,614.81
<b>Total Personnel Services – Salaries</b>	<b>\$1,102,638.78</b>	<b>\$1,239,236.45</b>	<b>\$394,739.58</b>	<b>\$2,736,614.81</b>
<b>200 Personnel Services – Employee Benefits</b>				
210 Group Insurance – Contracted Provider	3,871.92	3,788.11	456.25	8,116.28
220 Social Security Contributions	82,824.22	92,378.95	29,292.35	204,495.52
230 PSERS Retirement Contributions	436,276.62	451,317.80	69,226.27	956,820.69
260 Workers' Compensation	5,117.67	5,861.54	2,509.60	13,488.81
270 Group Insurance – Self-Insurance	329,108.72	291,993.26	67,991.91	689,093.89
<b>Total Personnel Services – Employee Benefits</b>	<b>\$857,199.15</b>	<b>\$845,339.66</b>	<b>\$169,476.38</b>	<b>\$1,872,015.19</b>
<b>300 Purchased Professional and Technical Services</b>				
322 Professional Educational Services – lus	149,737.25	530,152.72	224,450.00	904,339.97
329 Professional Educational Services – Other	817,935.64	772,710.66	268,125.30	1,858,771.60
330 Other Professional Services	40,203.51	203,821.71	28,334.00	272,359.22
<b>Total Purchased Professional and Technical Services</b>	<b>\$1,007,876.40</b>	<b>\$1,506,685.09</b>	<b>\$520,909.30</b>	<b>\$3,035,470.79</b>
<b>500 Other Purchased Services</b>				
510 Student Transportation Services	22,359.21	21,516.79		43,876.00
530 Communications	14.82	341.30		356.12
550 Printing and Binding	203.00	203.00		406.00
561 Tuition To Other School Districts Within the State	4,495.50	63,484.06		67,979.56
562 Tuition To Pennsylvania Charter Schools	111,481.64	682,086.46		793,568.10
568 Tuition To Private Residential Rehabilitative Institutions (PRRI) [In-State] and Detention Centers		68,102.52		68,102.52
569 Tuition – Other		137,949.90		137,949.90
580 Travel	641.90	127.90		769.80
594 IU Payment By Withholding for Institutionalized Children's Programs – Special Classes		238.75		238.75
<b>Total Other Purchased Services</b>	<b>\$139,196.07</b>	<b>\$974,050.68</b>		<b>\$1,113,246.75</b>
<b>600 Supplies</b>				
610 General Supplies	10,802.39	8,349.30		19,151.69
640 Books and Periodicals	2,735.25	1,724.38	57,251.94	61,711.57
650 Supplies & Fees – Technology Related	3,613.79	6,114.03		9,727.82
<b>Total Supplies</b>	<b>\$17,151.43</b>	<b>\$16,187.71</b>	<b>\$57,251.94</b>	<b>\$90,591.08</b>
<b>800 Other Objects</b>				
810 Dues and Fees	1,535.00	1,730.00		3,265.00
<b>Total Other Objects</b>	<b>\$1,535.00</b>	<b>\$1,730.00</b>		<b>\$3,265.00</b>
<b>Total 1200 Special Programs – Elementary / Secondary</b>	<b>\$3,125,596.83</b>	<b>\$4,583,229.59</b>	<b>\$1,142,377.20</b>	<b>\$8,851,203.62</b>

LEA : 113362303 Eastern Lancaster County SD

Printed 11/16/2023 8:47:38 AM

General Fund (10)

1210 Life Skills Support

	Elementary	Secondary	Federal	Total
<b>100 <u>Personnel Services – Salaries</u></b>				
100 Personnel Services – Salaries	157,926.05	160,025.53	81,502.00	399,453.58
<b>Total Personnel Services – Salaries</b>	<b>\$157,926.05</b>	<b>\$160,025.53</b>	<b>\$81,502.00</b>	<b>\$399,453.58</b>
<b>200 <u>Personnel Services – Employee Benefits</u></b>				
210 Group Insurance – Contracted Provider	503.06	492.72	75.00	1,070.78
220 Social Security Contributions	11,885.59	11,686.09	5,752.83	29,324.51
230 PSERS Retirement Contributions	55,684.67	70,793.66	14,368.86	140,847.19
260 Workers' Compensation	714.23	729.62	516.76	1,960.61
270 Group Insurance – Self-Insurance	47,655.22	54,460.56	18,488.58	120,604.36
<b>Total Personnel Services – Employee Benefits</b>	<b>\$116,442.77</b>	<b>\$138,162.65</b>	<b>\$39,202.03</b>	<b>\$293,807.45</b>
<b>300 <u>Purchased Professional and Technical Services</u></b>				
329 Professional Educational Services – Other	107,575.96	180,102.51		287,678.47
330 Other Professional Services		252.45		252.45
<b>Total Purchased Professional and Technical Services</b>	<b>\$107,575.96</b>	<b>\$180,354.96</b>		<b>\$287,930.92</b>
<b>500 <u>Other Purchased Services</u></b>				
530 Communications		59.82		59.82
<b>Total Other Purchased Services</b>		<b>\$59.82</b>		<b>\$59.82</b>
<b>600 <u>Supplies</u></b>				
610 General Supplies	1,387.82	2,538.57		3,926.39
640 Books and Periodicals	516.96	224.60		741.56
650 Supplies & Fees – Technology Related		3,590.52		3,590.52
<b>Total Supplies</b>	<b>\$1,904.78</b>	<b>\$6,353.69</b>		<b>\$8,258.47</b>
<b>Total 1210 Life Skills Support</b>	<b>\$383,849.56</b>	<b>\$484,956.65</b>	<b>\$120,704.03</b>	<b>\$989,510.24</b>



LEA : 113362303 Eastern Lancaster County SD

Printed 11/16/2023 8:47:38 AM

General Fund (10)

1220 Sensory Support

	Elementary	Secondary	Federal	Total
<b>100 <u>Personnel Services – Salaries</u></b>				
100 Personnel Services – Salaries	69,553.68	3,454.01	184,624.20	257,631.89
<b>Total Personnel Services – Salaries</b>	<b>\$69,553.68</b>	<b>\$3,454.01</b>	<b>\$184,624.20</b>	<b>\$257,631.89</b>
<b>200 <u>Personnel Services – Employee Benefits</u></b>				
210 Group Insurance – Contracted Provider	73.68	0.74	231.25	305.67
220 Social Security Contributions	5,267.33	259.86	13,869.87	19,397.06
230 PSERS Retirement Contributions	51,075.86	6,849.48	32,182.83	90,108.17
260 Workers' Compensation	314.71	20.02	1,177.10	1,511.83
270 Group Insurance – Self-Insurance	12,587.94		40,202.73	52,790.67
<b>Total Personnel Services – Employee Benefits</b>	<b>\$69,319.52</b>	<b>\$7,130.10</b>	<b>\$87,663.78</b>	<b>\$164,113.40</b>
<b>300 <u>Purchased Professional and Technical Services</u></b>				
322 Professional Educational Services – lus	64,512.29	25,034.00		89,546.29
330 Other Professional Services	39,772.95	107,204.48	28,334.00	175,311.43
<b>Total Purchased Professional and Technical Services</b>	<b>\$104,285.24</b>	<b>\$132,238.48</b>	<b>\$28,334.00</b>	<b>\$264,857.72</b>
<b>500 <u>Other Purchased Services</u></b>				
530 Communications	1.80			1.80
550 Printing and Binding	68.00	68.00		136.00
<b>Total Other Purchased Services</b>	<b>\$69.80</b>	<b>\$68.00</b>		<b>\$137.80</b>
<b>600 <u>Supplies</u></b>				
610 General Supplies	195.64	56.76		252.40
640 Books and Periodicals	143.90			143.90
650 Supplies & Fees – Technology Related	1,784.06			1,784.06
<b>Total Supplies</b>	<b>\$2,123.60</b>	<b>\$56.76</b>		<b>\$2,180.36</b>
<b>Total 1220 Sensory Support</b>	<b>\$245,351.84</b>	<b>\$142,947.35</b>	<b>\$300,621.98</b>	<b>\$688,921.17</b>

LEA : 113362303 Eastern Lancaster County SD

Printed 11/16/2023 8:47:38 AM

General Fund (10)

1230 Emotional Support

	Elementary	Secondary	Federal	Total
<b>100 <u>Personnel Services – Salaries</u></b>				
100 Personnel Services – Salaries	374,874.67	373,003.82	128,613.38	876,491.87
<b>Total Personnel Services – Salaries</b>	<b>\$374,874.67</b>	<b>\$373,003.82</b>	<b>\$128,613.38</b>	<b>\$876,491.87</b>
<b>200 <u>Personnel Services – Employee Benefits</u></b>				
210 Group Insurance – Contracted Provider	1,340.07	1,075.00	150.00	2,565.07
220 Social Security Contributions	28,158.53	28,253.81	9,669.65	66,081.99
230 PSERS Retirement Contributions	153,752.64	126,471.08	22,674.58	302,898.30
260 Workers' Compensation	1,834.87	1,811.33	815.74	4,461.94
270 Group Insurance – Self-Insurance	101,824.22	76,235.46	9,300.60	187,360.28
<b>Total Personnel Services – Employee Benefits</b>	<b>\$286,910.33</b>	<b>\$233,846.68</b>	<b>\$42,610.57</b>	<b>\$563,367.58</b>
<b>300 <u>Purchased Professional and Technical Services</u></b>				
322 Professional Educational Services – lus	58,482.96	251,669.38	222,096.00	532,248.34
329 Professional Educational Services – Other	519,743.04	403,027.65		922,770.69
330 Other Professional Services	82.06	83,505.81		83,587.87
<b>Total Purchased Professional and Technical Services</b>	<b>\$578,308.06</b>	<b>\$738,202.84</b>	<b>\$222,096.00</b>	<b>\$1,538,606.90</b>
<b>500 <u>Other Purchased Services</u></b>				
530 Communications	3.42	21.27		24.69
561 Tuition To Other School Districts Within the State	4,495.50	43,786.21		48,281.71
568 Tuition To Private Residential Rehabilitative Institutions (PRRI) [In-State] and Detention Centers		56,442.72		56,442.72
569 Tuition – Other		137,949.90		137,949.90
<b>Total Other Purchased Services</b>	<b>\$4,498.92</b>	<b>\$238,200.10</b>		<b>\$242,699.02</b>
<b>600 <u>Supplies</u></b>				
610 General Supplies	6,898.16	1,342.43		8,240.59
640 Books and Periodicals	58.54	95.44		153.98
650 Supplies & Fees – Technology Related		228.79		228.79
<b>Total Supplies</b>	<b>\$6,956.70</b>	<b>\$1,666.66</b>		<b>\$8,623.36</b>
<b>Total 1230 Emotional Support</b>	<b>\$1,251,548.68</b>	<b>\$1,584,920.10</b>	<b>\$393,319.95</b>	<b>\$3,229,788.73</b>

LEA : 113362303 Eastern Lancaster County SD

Printed 11/16/2023 8:47:38 AM

General Fund (10)

1240 Academic Support

	Elementary	Secondary	Federal	Total
<b>100 <u>Personnel Services – Salaries</u></b>				
100 Personnel Services – Salaries	422,530.67	620,356.07		1,042,886.74
<b>Total Personnel Services – Salaries</b>	<b>\$422,530.67</b>	<b>\$620,356.07</b>		<b>\$1,042,886.74</b>
<b>200 <u>Personnel Services – Employee Benefits</u></b>				
210 Group Insurance – Contracted Provider	1,516.90	1,961.05		3,477.95
220 Social Security Contributions	31,665.96	46,093.55		77,759.51
230 PSERS Retirement Contributions	148,347.60	218,150.28		366,497.88
260 Workers' Compensation	1,899.48	2,928.87		4,828.35
270 Group Insurance – Self-Insurance	143,250.81	143,130.50		286,381.31
<b>Total Personnel Services – Employee Benefits</b>	<b>\$326,680.75</b>	<b>\$412,264.25</b>		<b>\$738,945.00</b>
<b>300 <u>Purchased Professional and Technical Services</u></b>				
322 Professional Educational Services – lus		173,312.34		173,312.34
329 Professional Educational Services – Other	138,688.12	134,256.96		272,945.08
330 Other Professional Services	348.50	2,730.21		3,078.71
<b>Total Purchased Professional and Technical Services</b>	<b>\$139,036.62</b>	<b>\$310,299.51</b>		<b>\$449,336.13</b>
<b>500 <u>Other Purchased Services</u></b>				
530 Communications	6.87	255.46		262.33
561 Tuition To Other School Districts Within the State		19,697.85		19,697.85
562 Tuition To Pennsylvania Charter Schools	111,481.64	682,086.46		793,568.10
568 Tuition To Private Residential Rehabilitative Institutions (PRRI) [In-State] and Detention Centers		11,659.80		11,659.80
580 Travel		127.90		127.90
<b>Total Other Purchased Services</b>	<b>\$111,488.51</b>	<b>\$713,827.47</b>		<b>\$825,315.98</b>
<b>600 <u>Supplies</u></b>				
610 General Supplies	16.98	1,688.12		1,705.10
640 Books and Periodicals	1,962.34	1,352.85		3,315.19
650 Supplies & Fees – Technology Related		533.93		533.93
<b>Total Supplies</b>	<b>\$1,979.32</b>	<b>\$3,574.90</b>		<b>\$5,554.22</b>
<b>800 <u>Other Objects</u></b>				
810 Dues and Fees	1,535.00	1,730.00		3,265.00
<b>Total Other Objects</b>	<b>\$1,535.00</b>	<b>\$1,730.00</b>		<b>\$3,265.00</b>
<b>Total 1240 Academic Support</b>	<b>\$1,003,250.87</b>	<b>\$2,062,052.20</b>		<b>\$3,065,303.07</b>

LEA : 113362303     Eastern Lancaster County SD

Printed 11/16/2023 8:47:38 AM

General Fund (10)

1241 Learning Support – Public	Elementary	Secondary	Federal	Total
100 <u>Personnel Services – Salaries</u>				
100 Personnel Services – Salaries	343,348.67	542,319.07		885,667.74
<b>Total Personnel Services – Salaries</b>	<b>\$343,348.67</b>	<b>\$542,319.07</b>		<b>\$885,667.74</b>
200 <u>Personnel Services – Employee Benefits</u>				
210 Group Insurance – Contracted Provider	1,265.27	1,712.16		2,977.43
220 Social Security Contributions	25,706.66	40,322.77		66,029.43
230 PSERS Retirement Contributions	120,428.13	190,634.35		311,062.48
260 Workers' Compensation	1,546.73	2,577.35		4,124.08
270 Group Insurance – Self-Insurance	110,699.26	129,125.46		239,824.72
<b>Total Personnel Services – Employee Benefits</b>	<b>\$259,646.05</b>	<b>\$364,372.09</b>		<b>\$624,018.14</b>
300 <u>Purchased Professional and Technical Services</u>				
322 Professional Educational Services – lus		173,312.34		173,312.34
329 Professional Educational Services – Other	138,688.12	134,256.96		272,945.08
330 Other Professional Services	148.50	2,640.21		2,788.71
<b>Total Purchased Professional and Technical Services</b>	<b>\$138,836.62</b>	<b>\$310,209.51</b>		<b>\$449,046.13</b>
500 <u>Other Purchased Services</u>				
530 Communications	6.87	174.70		181.57
561 Tuition To Other School Districts Within the State		19,697.85		19,697.85
562 Tuition To Pennsylvania Charter Schools	111,481.64	682,086.46		793,568.10
568 Tuition To Private Residential Rehabilitative Institutions (PRRI) [In-State] and Detention Centers		11,659.80		11,659.80
580 Travel		127.90		127.90
<b>Total Other Purchased Services</b>	<b>\$111,488.51</b>	<b>\$713,746.71</b>		<b>\$825,235.22</b>
600 <u>Supplies</u>				
610 General Supplies	16.98	1,209.41		1,226.39
640 Books and Periodicals	1,962.34	1,177.30		3,139.64
650 Supplies & Fees – Technology Related		533.93		533.93
<b>Total Supplies</b>	<b>\$1,979.32</b>	<b>\$2,920.64</b>		<b>\$4,899.96</b>
<b>Total 1241 Learning Support – Public</b>	<b>\$855,299.17</b>	<b>\$1,933,568.02</b>		<b>\$2,788,867.19</b>

LEA : 113362303      Eastern Lancaster County SD

Printed 11/16/2023 8:47:38 AM

<b>General Fund (10)</b>				
<b>1243 Gifted Support</b>	<u>Elementary</u>	<u>Secondary</u>	<u>Federal</u>	<u>Total</u>
<b>100 <u>Personnel Services – Salaries</u></b>				
100 Personnel Services – Salaries	79,182.00	78,037.00		157,219.00
<b>Total Personnel Services – Salaries</b>	<b>\$79,182.00</b>	<b>\$78,037.00</b>		<b>\$157,219.00</b>
<b>200 <u>Personnel Services – Employee Benefits</u></b>				
210 Group Insurance – Contracted Provider	251.63	248.89		500.52
220 Social Security Contributions	5,959.30	5,770.78		11,730.08
230 PSERS Retirement Contributions	27,919.47	27,515.93		55,435.40
260 Workers' Compensation	352.75	351.52		704.27
270 Group Insurance – Self-Insurance	32,551.55	14,005.04		46,556.59
<b>Total Personnel Services – Employee Benefits</b>	<b>\$67,034.70</b>	<b>\$47,892.16</b>		<b>\$114,926.86</b>
<b>300 <u>Purchased Professional and Technical Services</u></b>				
330 Other Professional Services	200.00	90.00		290.00
<b>Total Purchased Professional and Technical Services</b>	<b>\$200.00</b>	<b>\$90.00</b>		<b>\$290.00</b>
<b>500 <u>Other Purchased Services</u></b>				
530 Communications		80.76		80.76
<b>Total Other Purchased Services</b>		<b>\$80.76</b>		<b>\$80.76</b>
<b>600 <u>Supplies</u></b>				
610 General Supplies		478.71		478.71
640 Books and Periodicals		175.55		175.55
<b>Total Supplies</b>		<b>\$654.26</b>		<b>\$654.26</b>
<b>800 <u>Other Objects</u></b>				
810 Dues and Fees	1,535.00	1,730.00		3,265.00
<b>Total Other Objects</b>	<b>\$1,535.00</b>	<b>\$1,730.00</b>		<b>\$3,265.00</b>
<b>Total 1243 Gifted Support</b>	<b>\$147,951.70</b>	<b>\$128,484.18</b>		<b>\$276,435.88</b>

LEA : 113362303      Eastern Lancaster County SD

Printed 11/16/2023 8:47:38 AM

<b>General Fund (10)</b>				
<b>1270 Multi-Handicapped Support</b>	<u>Elementary</u>	<u>Secondary</u>	<u>Federal</u>	<u>Total</u>
<b>100 <u>Personnel Services – Salaries</u></b>				
100 Personnel Services – Salaries	77,753.71	82,397.02		160,150.73
<b>Total Personnel Services – Salaries</b>	<b>\$77,753.71</b>	<b>\$82,397.02</b>		<b>\$160,150.73</b>
<b>200 <u>Personnel Services – Employee Benefits</u></b>				
210 Group Insurance – Contracted Provider	438.21	258.60		696.81
220 Social Security Contributions	5,846.81	6,085.64		11,932.45
230 PSERS Retirement Contributions	27,415.85	29,053.30		56,469.15
260 Workers' Compensation	354.38	371.70		726.08
270 Group Insurance – Self-Insurance	23,790.53	18,166.74		41,957.27
<b>Total Personnel Services – Employee Benefits</b>	<b>\$57,845.78</b>	<b>\$53,935.98</b>		<b>\$111,781.76</b>
<b>300 <u>Purchased Professional and Technical Services</u></b>				
322 Professional Educational Services – lus		45,620.00		45,620.00
329 Professional Educational Services – Other	51,928.52	55,323.54		107,252.06
330 Other Professional Services		10,128.76		10,128.76
<b>Total Purchased Professional and Technical Services</b>	<b>\$51,928.52</b>	<b>\$111,072.30</b>		<b>\$163,000.82</b>
<b>500 <u>Other Purchased Services</u></b>				
530 Communications	2.73	4.75		7.48
550 Printing and Binding	135.00	135.00		270.00
580 Travel	641.90			641.90
<b>Total Other Purchased Services</b>	<b>\$779.63</b>	<b>\$139.75</b>		<b>\$919.38</b>
<b>600 <u>Supplies</u></b>				
610 General Supplies	2,303.79	2,723.42		5,027.21
650 Supplies & Fees – Technology Related	1,829.73	1,760.79		3,590.52
<b>Total Supplies</b>	<b>\$4,133.52</b>	<b>\$4,484.21</b>		<b>\$8,617.73</b>
<b>Total 1270 Multi-Handicapped Support</b>	<b>\$192,441.16</b>	<b>\$252,029.26</b>		<b>\$444,470.42</b>

LEA : 113362303 Eastern Lancaster County SD

Printed 11/16/2023 8:47:38 AM

General Fund (10)				
1280 Early Intervention Support	<u>Elementary</u>	<u>Secondary</u>	<u>Federal</u>	<u>Total</u>
300 <u>Purchased Professional and Technical Services</u>				
322 Professional Educational Services – lus	26,742.00		2,354.00	29,096.00
Total Purchased Professional and Technical Services	\$26,742.00		\$2,354.00	\$29,096.00
Total 1280 Early Intervention Support	\$26,742.00		\$2,354.00	\$29,096.00

LEA : 113362303 Eastern Lancaster County SD

Printed 11/16/2023 8:47:38 AM

General Fund (10)

1290 Special Programs - Other Support	<u>Elementary</u>	<u>Secondary</u>	<u>Federal</u>	<u>Total</u>
300 <u>Purchased Professional and Technical Services</u>				
322 Professional Educational Services – Ius		34,517.00		34,517.00
329 Professional Educational Services – Other			268,125.30	268,125.30
Total Purchased Professional and Technical Services		\$34,517.00	\$268,125.30	\$302,642.30
500 <u>Other Purchased Services</u>				
510 Student Transportation Services	22,359.21	21,516.79		43,876.00
594 IU Payment By Withholding for Institutionalized Children's Programs – Special Classes		238.75		238.75
Total Other Purchased Services	\$22,359.21	\$21,755.54		\$44,114.75
600 <u>Supplies</u>				
640 Books and Periodicals	53.51	51.49	57,251.94	57,356.94
Total Supplies	\$53.51	\$51.49	\$57,251.94	\$57,356.94
Total 1290 Special Programs - Other Support	\$22,412.72	\$56,324.03	\$325,377.24	\$404,113.99



LEA : 113362303      Eastern Lancaster County SD

Printed 11/16/2023 8:47:38 AM

General Fund (10)					
1300 Vocational Education		Elementary	Secondary	Federal	Total
100 <u>Personnel Services – Salaries</u>					
100 Personnel Services – Salaries			142,045.98		142,045.98
Total Personnel Services – Salaries			\$142,045.98		\$142,045.98
200 <u>Personnel Services – Employee Benefits</u>					
210 Group Insurance – Contracted Provider			315.56		315.56
220 Social Security Contributions			10,411.58		10,411.58
230 PSERS Retirement Contributions			49,649.03		49,649.03
260 Workers' Compensation			636.79		636.79
270 Group Insurance – Self-Insurance			36,082.71		36,082.71
Total Personnel Services – Employee Benefits			\$97,095.67		\$97,095.67
300 <u>Purchased Professional and Technical Services</u>					
329 Professional Educational Services – Other			3,337.79		3,337.79
Total Purchased Professional and Technical Services			\$3,337.79		\$3,337.79
500 <u>Other Purchased Services</u>					
510 Student Transportation Services			2,726.52		2,726.52
530 Communications			186.48		186.48
564 Tuition To Career and Technology Centers			1,031,699.83		1,031,699.83
580 Travel			373.28		373.28
Total Other Purchased Services			\$1,034,986.11		\$1,034,986.11
600 <u>Supplies</u>					
610 General Supplies			19,197.86		19,197.86
630 Food			18.97		18.97
650 Supplies & Fees – Technology Related			1,005.68		1,005.68
Total Supplies			\$20,222.51		\$20,222.51
800 <u>Other Objects</u>					
810 Dues and Fees			3,196.25		3,196.25
890 Miscellaneous Expenditures			9,586.00		9,586.00
Total Other Objects			\$12,782.25		\$12,782.25
Total 1300 Vocational Education			\$1,310,470.31		\$1,310,470.31

LEA : 113362303 Eastern Lancaster County SD

Printed 11/16/2023 8:47:38 AM

General Fund (10)

1400 Other Instructional Programs – Elementary / Secondary	<u>Elementary</u>	<u>Secondary</u>	<u>Federal</u>	<u>Total</u>
100 <u>Personnel Services – Salaries</u>				
100 Personnel Services – Salaries		2,280.50	17,423.34	19,703.84
Total Personnel Services – Salaries		\$2,280.50	\$17,423.34	\$19,703.84
200 <u>Personnel Services – Employee Benefits</u>				
220 Social Security Contributions		171.90	1,297.42	1,469.32
230 PSERS Retirement Contributions		804.10	3,071.75	3,875.85
260 Workers’ Compensation		14.28	112.51	126.79
Total Personnel Services – Employee Benefits		\$990.28	\$4,481.68	\$5,471.96
300 <u>Purchased Professional and Technical Services</u>				
322 Professional Educational Services – Ius		57,385.23		57,385.23
329 Professional Educational Services – Other	2,079.00	13,551.96		15,630.96
Total Purchased Professional and Technical Services	\$2,079.00	\$70,937.19		\$73,016.19
500 <u>Other Purchased Services</u>				
561 Tuition To Other School Districts Within the State		19,913.54		19,913.54
Total Other Purchased Services		\$19,913.54		\$19,913.54
600 <u>Supplies</u>				
640 Books and Periodicals			10,809.05	10,809.05
Total Supplies			\$10,809.05	\$10,809.05
Total 1400 Other Instructional Programs – Elementary / Secondary	\$2,079.00	\$94,121.51	\$32,714.07	\$128,914.58

General Fund (10)

1410 Drivers' Education

	<u>Elementary</u>	<u>Secondary</u>	<u>Federal</u>	<u>Total</u>
<b>100 <u>Personnel Services – Salaries</u></b>				
100 Personnel Services – Salaries		2,264.00		2,264.00
<b>Total Personnel Services – Salaries</b>		<b>\$2,264.00</b>		<b>\$2,264.00</b>
<b>200 <u>Personnel Services – Employee Benefits</u></b>				
220 Social Security Contributions		170.65		170.65
230 PSERS Retirement Contributions		798.28		798.28
260 Workers' Compensation		14.20		14.20
<b>Total Personnel Services – Employee Benefits</b>		<b>\$983.13</b>		<b>\$983.13</b>
<b>Total 1410 Drivers' Education</b>		<b>\$3,247.13</b>		<b>\$3,247.13</b>

LEA : 113362303 Eastern Lancaster County SD

Printed 11/16/2023 8:47:38 AM

General Fund (10)

1420 Summer School

	<u>Elementary</u>	<u>Secondary</u>	<u>Federal</u>	<u>Total</u>
<b>100 <u>Personnel Services – Salaries</u></b>				
100 Personnel Services – Salaries		16.50	17,423.34	17,439.84
<b>Total Personnel Services – Salaries</b>		<b>\$16.50</b>	<b>\$17,423.34</b>	<b>\$17,439.84</b>
<b>200 <u>Personnel Services – Employee Benefits</u></b>				
220 Social Security Contributions		1.25	1,297.42	1,298.67
230 PSERS Retirement Contributions		5.82	3,071.75	3,077.57
260 Workers’ Compensation		0.08	112.51	112.59
<b>Total Personnel Services – Employee Benefits</b>		<b>\$7.15</b>	<b>\$4,481.68</b>	<b>\$4,488.83</b>
<b>600 <u>Supplies</u></b>				
640 Books and Periodicals			10,809.05	10,809.05
<b>Total Supplies</b>			<b>\$10,809.05</b>	<b>\$10,809.05</b>
<b>Total 1420 Summer School</b>		<b>\$23.65</b>	<b>\$32,714.07</b>	<b>\$32,737.72</b>

LEA : 113362303 Eastern Lancaster County SD

Printed 11/16/2023 8:47:38 AM

General Fund (10)

1430 Homebound Instruction	<u>Elementary</u>	<u>Secondary</u>	<u>Federal</u>	<u>Total</u>
300 <u>Purchased Professional and Technical Services</u>				
329 Professional Educational Services – Other	2,079.00	13,551.96		15,630.96
Total Purchased Professional and Technical Services	\$2,079.00	\$13,551.96		\$15,630.96
Total 1430 Homebound Instruction	\$2,079.00	\$13,551.96		\$15,630.96

General Fund (10)

1440 Alternative Regular Education Programs	<u>Elementary</u>	<u>Secondary</u>	<u>Federal</u>	<u>Total</u>
300 <u>Purchased Professional and Technical Services</u>				
322 Professional Educational Services – lus		57,385.23		57,385.23
Total Purchased Professional and Technical Services		\$57,385.23		\$57,385.23
500 <u>Other Purchased Services</u>				
561 Tuition To Other School Districts Within the State		19,913.54		19,913.54
Total Other Purchased Services		\$19,913.54		\$19,913.54
Total 1440 Alternative Regular Education Programs		\$77,298.77		\$77,298.77

General Fund (10)

1441 Adjudicated / Court-Placed Programs

<u>Elementary</u>	<u>Secondary</u>	<u>Federal</u>	<u>Total</u>
-------------------	------------------	----------------	--------------

500 Other Purchased Services

561 Tuition To Other School Districts Within the State	18,169.25		18,169.25
--	-----------	--	-----------

<b>Total Other Purchased Services</b>	<b>\$18,169.25</b>		<b>\$18,169.25</b>
---------------------------------------	--------------------	--	--------------------

<b>Total 1441 Adjudicated / Court-Placed Programs</b>	<b>\$18,169.25</b>		<b>\$18,169.25</b>
---	--------------------	--	--------------------

General Fund (10)

1442 Alternative Education Programs	<u>Elementary</u>	<u>Secondary</u>	<u>Federal</u>	<u>Total</u>
300 <u>Purchased Professional and Technical Services</u>				
322 Professional Educational Services – lus		57,385.23		57,385.23
Total Purchased Professional and Technical Services		\$57,385.23		\$57,385.23
500 <u>Other Purchased Services</u>				
561 Tuition To Other School Districts Within the State		1,744.29		1,744.29
Total Other Purchased Services		\$1,744.29		\$1,744.29
Total 1442 Alternative Education Programs		\$59,129.52		\$59,129.52



LEA : 113362303 Eastern Lancaster County SD

Printed 11/16/2023 8:47:38 AM

General Fund (10)

1500 Nonpublic School Programs

	<u>Elementary</u>	<u>Secondary</u>	<u>Federal</u>	<u>Total</u>
<b>300 <u>Purchased Professional and Technical Services</u></b>				
322 Professional Educational Services – Ius			30,228.00	30,228.00
330 Other Professional Services			200.00	200.00
360 Employee Training and Development Services			24,056.42	24,056.42
<b>Total Purchased Professional and Technical Services</b>			<b>\$54,484.42</b>	<b>\$54,484.42</b>
<b>600 <u>Supplies</u></b>				
610 General Supplies			4,014.37	4,014.37
650 Supplies & Fees – Technology Related			17,947.05	17,947.05
<b>Total Supplies</b>			<b>\$21,961.42</b>	<b>\$21,961.42</b>
<b>800 <u>Other Objects</u></b>				
810 Dues and Fees			85.00	85.00
<b>Total Other Objects</b>			<b>\$85.00</b>	<b>\$85.00</b>
<b>Total 1500 Nonpublic School Programs</b>			<b>\$76,530.84</b>	<b>\$76,530.84</b>

LEA : 113362303 Eastern Lancaster County SD

Printed 11/16/2023 8:47:42 AM

General Fund (10)

2000 Support Services

Total

100	<u>Personnel Services – Salaries</u>	
100	Personnel Services – Salaries	8,356,278.46
Total Personnel Services – Salaries		\$8,356,278.46
200	<u>Personnel Services – Employee Benefits</u>	
210	Group Insurance – Contracted Provider	31,039.14
220	Social Security Contributions	611,364.91
230	PSERS Retirement Contributions	2,826,378.96
240	Tuition Reimbursement	264,508.84
260	Workers' Compensation	39,894.70
270	Group Insurance – Self-Insurance	1,735,537.18
291	Other Retirement Plans	79,143.00
Total Personnel Services – Employee Benefits		\$5,587,866.73
300	<u>Purchased Professional and Technical Services</u>	
322	Professional Educational Services – Ius	168,341.25
329	Professional Educational Services – Other	221,881.66
330	Other Professional Services	1,010,440.16
340	Technical Services	124,915.10
350	Security / Safety Services	41,394.64
360	Employee Training and Development Services	83,076.28
390	Other Purchased Professional and Technical Services	287,123.00
Total Purchased Professional and Technical Services		\$1,937,172.09
400	<u>Purchased Property Services</u>	
410	Cleaning Services	844,369.52
420	Utility Services	58,736.59
430	Repairs and Maintenance Services	902,457.18
440	Rentals	35,305.58
460	Extermination Services	7,029.31
Total Purchased Property Services		\$1,847,898.18
500	<u>Other Purchased Services</u>	
510	Student Transportation Services	1,476.58
513	Contracted Carriers	2,735,920.99
516	Student Transportation Services From the IU	10,682.51
520	Insurance – General	400.00
523	General Property and Liability Insurance	251,352.00
530	Communications	200,244.95
549	Other Advertising/Public Relations	6,748.86
550	Printing and Binding	20,639.88
580	Travel	46,391.99
595	IU Payments By Withholding	36,659.70
Total Other Purchased Services		\$3,310,517.46
600	<u>Supplies</u>	
610	General Supplies	536,475.16
620	Energy	997,371.98
630	Food	39,488.49

General Fund (10)

2000 Support Services

Total

600 <u>Supplies</u>	
640 Books and Periodicals	54,170.19
650 Supplies & Fees – Technology Related	810,277.51
Total Supplies	\$2,437,783.33
700 <u>Property</u>	
738 Technology Software Lease and Other Right-to-Use Arrangements	100,949.72
752 Capital Equipment – Original and Additional	91,092.75
756 Capitalized Technology Equipment – Original	23,648.19
762 Capitalized Equipment - Replacement	275,571.73
766 Capitalized Technology Equipment – Replacement	317,633.92
Total Property	\$808,896.31
800 <u>Other Objects</u>	
810 Dues and Fees	58,573.12
Total Other Objects	\$58,573.12
Total 2000 Support Services	\$24,344,985.68

LEA : 113362303 Eastern Lancaster County SD

Printed 11/16/2023 8:47:42 AM

General Fund (10)

2100 Support Services – Students	Elementary	Secondary	Federal	Total
<b>100 Personnel Services – Salaries</b>				
100 Personnel Services – Salaries	229,610.30	116,325.42	644,041.51	1,244,001.69
<b>Total Personnel Services – Salaries</b>	<b>\$229,610.30</b>	<b>\$116,325.42</b>	<b>\$644,041.51</b>	<b>\$1,244,001.69</b>
<b>200 Personnel Services – Employee Benefits</b>				
210 Group Insurance – Contracted Provider	1,142.20	460.60	550.00	2,616.72
220 Social Security Contributions	17,292.70	8,642.22	48,426.49	92,736.81
230 PSERS Retirement Contributions	123,299.63	98,521.16	113,168.58	424,057.15
260 Workers' Compensation	1,051.32	543.56	4,038.23	6,773.16
270 Group Insurance – Self-Insurance	22,048.63	33,172.48	61,214.82	218,818.13
<b>Total Personnel Services – Employee Benefits</b>	<b>\$164,834.48</b>	<b>\$141,340.02</b>	<b>\$227,398.12</b>	<b>\$745,001.97</b>
<b>300 Purchased Professional and Technical Services</b>				
322 Professional Educational Services – lus	11,875.34	6,354.94	142,913.00	161,143.28
329 Professional Educational Services – Other		83,629.38		83,629.38
330 Other Professional Services	8,534.18	3,393.50		127,085.95
<b>Total Purchased Professional and Technical Services</b>	<b>\$20,409.52</b>	<b>\$93,377.82</b>	<b>\$142,913.00</b>	<b>\$371,858.61</b>
<b>400 Purchased Property Services</b>				
440 Rentals		129.38		129.38
<b>Total Purchased Property Services</b>		<b>\$129.38</b>		<b>\$129.38</b>
<b>500 Other Purchased Services</b>				
510 Student Transportation Services		1,476.58		1,476.58
530 Communications	360.15	6,606.61		7,008.25
550 Printing and Binding		411.00		411.00
580 Travel	167.50	16.40		183.90
<b>Total Other Purchased Services</b>	<b>\$527.65</b>	<b>\$8,510.59</b>		<b>\$9,079.73</b>
<b>600 Supplies</b>				
610 General Supplies	88.00	2,655.33		4,481.33
630 Food		394.97		394.97
640 Books and Periodicals	3,720.62	9,017.33		12,737.95
650 Supplies & Fees – Technology Related	23,744.40	21,858.22		45,602.62
<b>Total Supplies</b>	<b>\$27,553.02</b>	<b>\$33,925.85</b>		<b>\$63,216.87</b>
<b>700 Property</b>				
752 Capital Equipment – Original and Additional		55,100.00		55,100.00
<b>Total Property</b>		<b>\$55,100.00</b>		<b>\$55,100.00</b>
<b>800 Other Objects</b>				
810 Dues and Fees	559.00	1,005.00		1,599.00
<b>Total Other Objects</b>	<b>\$559.00</b>	<b>\$1,005.00</b>		<b>\$1,599.00</b>
<b>Total 2100 Support Services – Students</b>	<b>\$443,493.97</b>	<b>\$449,714.08</b>	<b>\$1,014,352.63</b>	<b>\$2,489,987.25</b>

LEA : 113362303      Eastern Lancaster County SD

Printed 11/16/2023 8:47:42 AM

<b>General Fund (10)</b>				
<b>2120 Guidance Services</b>	<b><u>Elementary</u></b>	<b><u>Secondary</u></b>	<b><u>Federal</u></b>	<b><u>Total</u></b>
<b>100 <u>Personnel Services – Salaries</u></b>				
100 Personnel Services – Salaries		27,182.22	644,041.51	671,223.73
<b>Total Personnel Services – Salaries</b>		<b>\$27,182.22</b>	<b>\$644,041.51</b>	<b>\$671,223.73</b>
<b>200 <u>Personnel Services – Employee Benefits</u></b>				
210 Group Insurance – Contracted Provider	189.40	137.97	550.00	877.37
220 Social Security Contributions	(0.03)	2,054.03	48,426.49	50,480.49
230 PSERS Retirement Contributions	42,750.25	67,089.42	113,168.58	223,008.25
260 Workers' Compensation	11.95	141.25	4,038.23	4,191.43
270 Group Insurance – Self-Insurance	3,153.13	18,585.91	61,214.82	82,953.86
<b>Total Personnel Services – Employee Benefits</b>	<b>\$46,104.70</b>	<b>\$88,008.58</b>	<b>\$227,398.12</b>	<b>\$361,511.40</b>
<b>300 <u>Purchased Professional and Technical Services</u></b>				
322 Professional Educational Services – lus		(0.47)	142,913.00	142,912.53
329 Professional Educational Services – Other		83,629.38		83,629.38
330 Other Professional Services	2,173.06	2,478.37		4,651.43
<b>Total Purchased Professional and Technical Services</b>	<b>\$2,173.06</b>	<b>\$86,107.28</b>	<b>\$142,913.00</b>	<b>\$231,193.34</b>
<b>400 <u>Purchased Property Services</u></b>				
440 Rentals		129.38		129.38
<b>Total Purchased Property Services</b>		<b>\$129.38</b>		<b>\$129.38</b>
<b>500 <u>Other Purchased Services</u></b>				
510 Student Transportation Services		1,476.58		1,476.58
530 Communications	30.75	6,158.43		6,189.18
550 Printing and Binding		411.00		411.00
580 Travel		16.40		16.40
<b>Total Other Purchased Services</b>	<b>\$30.75</b>	<b>\$8,062.41</b>		<b>\$8,093.16</b>
<b>600 <u>Supplies</u></b>				
610 General Supplies		2,655.33		2,655.33
630 Food		394.97		394.97
640 Books and Periodicals		8,290.00		8,290.00
650 Supplies & Fees – Technology Related	16,434.60	19,778.52		36,213.12
<b>Total Supplies</b>	<b>\$16,434.60</b>	<b>\$31,118.82</b>		<b>\$47,553.42</b>
<b>700 <u>Property</u></b>				
752 Capital Equipment – Original and Additional		55,100.00		55,100.00
<b>Total Property</b>		<b>\$55,100.00</b>		<b>\$55,100.00</b>
<b>800 <u>Other Objects</u></b>				
810 Dues and Fees	129.00	765.00		894.00
<b>Total Other Objects</b>	<b>\$129.00</b>	<b>\$765.00</b>		<b>\$894.00</b>
<b>Total 2120 Guidance Services</b>	<b>\$64,872.11</b>	<b>\$296,473.69</b>	<b>\$1,014,352.63</b>	<b>\$1,375,698.43</b>

General Fund (10)

2130 Attendance Services

Elementary                      Secondary                      Federal                      Total

100 <u>Personnel Services – Salaries</u>				
100 Personnel Services – Salaries				49,348.74
<b>Total Personnel Services – Salaries</b>				<b>\$49,348.74</b>
200 <u>Personnel Services – Employee Benefits</u>				
210 Group Insurance – Contracted Provider				166.75
220 Social Security Contributions				3,554.36
230 PSERS Retirement Contributions				17,224.19
260 Workers' Compensation				219.86
270 Group Insurance – Self-Insurance				27,620.98
<b>Total Personnel Services – Employee Benefits</b>				<b>\$48,786.14</b>
<b>Total 2130 Attendance Services</b>				<b>\$98,134.88</b>

LEA : 113362303 Eastern Lancaster County SD

Printed 11/16/2023 8:47:42 AM

General Fund (10)

2140 Psychological Services	Elementary	Secondary	Federal	Total
100 <u>Personnel Services – Salaries</u>				
100 Personnel Services – Salaries	229,610.30	85,144.92		314,755.22
<b>Total Personnel Services – Salaries</b>	<b>\$229,610.30</b>	<b>\$85,144.92</b>		<b>\$314,755.22</b>
200 <u>Personnel Services – Employee Benefits</u>				
210 Group Insurance – Contracted Provider	952.80	322.63		1,275.43
220 Social Security Contributions	17,292.73	6,295.21		23,587.94
230 PSERS Retirement Contributions	80,549.38	30,022.17		110,571.55
260 Workers' Compensation	1,039.37	384.44		1,423.81
270 Group Insurance – Self-Insurance	18,895.50	14,586.57		33,482.07
<b>Total Personnel Services – Employee Benefits</b>	<b>\$118,729.78</b>	<b>\$51,611.02</b>		<b>\$170,340.80</b>
300 <u>Purchased Professional and Technical Services</u>				
322 Professional Educational Services – lus	11,875.34	6,355.41		18,230.75
330 Other Professional Services	6,361.12	915.13		7,276.25
<b>Total Purchased Professional and Technical Services</b>	<b>\$18,236.46</b>	<b>\$7,270.54</b>		<b>\$25,507.00</b>
500 <u>Other Purchased Services</u>				
530 Communications	329.40	448.18		777.58
580 Travel	167.50			167.50
<b>Total Other Purchased Services</b>	<b>\$496.90</b>	<b>\$448.18</b>		<b>\$945.08</b>
600 <u>Supplies</u>				
610 General Supplies	88.00			88.00
640 Books and Periodicals	3,720.62	727.33		4,447.95
650 Supplies & Fees – Technology Related	7,309.80	986.97		8,296.77
<b>Total Supplies</b>	<b>\$11,118.42</b>	<b>\$1,714.30</b>		<b>\$12,832.72</b>
800 <u>Other Objects</u>				
810 Dues and Fees	430.00	240.00		670.00
<b>Total Other Objects</b>	<b>\$430.00</b>	<b>\$240.00</b>		<b>\$670.00</b>
<b>Total 2140 Psychological Services</b>	<b>\$378,621.86</b>	<b>\$146,428.96</b>		<b>\$525,050.82</b>

LEA : 113362303 Eastern Lancaster County SD

Printed 11/16/2023 8:47:42 AM

General Fund (10)

2160 Social Work Services

Elementary                      Secondary                      Federal                      Total

100 <u>Personnel Services – Salaries</u>				
100 Personnel Services – Salaries				154,797.00
<b>Total Personnel Services – Salaries</b>				<b>\$154,797.00</b>
200 <u>Personnel Services – Employee Benefits</u>				
210 Group Insurance – Contracted Provider				150.00
220 Social Security Contributions				11,325.66
230 PSERS Retirement Contributions				54,581.35
260 Workers' Compensation				697.36
270 Group Insurance – Self-Insurance				47,633.24
<b>Total Personnel Services – Employee Benefits</b>				<b>\$114,387.61</b>
300 <u>Purchased Professional and Technical Services</u>				
330 Other Professional Services				114,575.00
<b>Total Purchased Professional and Technical Services</b>				<b>\$114,575.00</b>
500 <u>Other Purchased Services</u>				
530 Communications				4.77
<b>Total Other Purchased Services</b>				<b>\$4.77</b>
800 <u>Other Objects</u>				
810 Dues and Fees				35.00
<b>Total Other Objects</b>				<b>\$35.00</b>
<b>Total 2160 Social Work Services</b>				<b>\$383,799.38</b>



LEA : 113362303 Eastern Lancaster County SD

Printed 11/16/2023 8:47:42 AM

General Fund (10)

2170 Student Accounting Services	<u>Elementary</u>	<u>Secondary</u>	<u>Federal</u>	<u>Total</u>
100 <u>Personnel Services – Salaries</u>				
100 Personnel Services – Salaries				49,878.72
Total Personnel Services – Salaries				\$49,878.72
200 <u>Personnel Services – Employee Benefits</u>				
210 Group Insurance – Contracted Provider				147.17
220 Social Security Contributions				3,495.38
230 PSERS Retirement Contributions				17,262.24
260 Workers' Compensation				222.83
270 Group Insurance – Self-Insurance				27,127.98
Total Personnel Services – Employee Benefits				\$48,255.60
300 <u>Purchased Professional and Technical Services</u>				
330 Other Professional Services				583.27
Total Purchased Professional and Technical Services				\$583.27
500 <u>Other Purchased Services</u>				
530 Communications				36.72
Total Other Purchased Services				\$36.72
600 <u>Supplies</u>				
610 General Supplies				1,738.00
Total Supplies				\$1,738.00
Total 2170 Student Accounting Services				\$100,492.31

General Fund (10)

2190 Other Student Services	<u>Elementary</u>	<u>Secondary</u>	<u>Federal</u>	<u>Total</u>
100 <u>Personnel Services – Salaries</u>				
100 Personnel Services – Salaries		3,998.28		3,998.28
Total Personnel Services – Salaries		\$3,998.28		\$3,998.28
200 <u>Personnel Services – Employee Benefits</u>				
220 Social Security Contributions		292.98		292.98
230 PSERS Retirement Contributions		1,409.57		1,409.57
260 Workers’ Compensation		17.87		17.87
Total Personnel Services – Employee Benefits		\$1,720.42		\$1,720.42
600 <u>Supplies</u>				
650 Supplies & Fees – Technology Related		1,092.73		1,092.73
Total Supplies		\$1,092.73		\$1,092.73
Total 2190 Other Student Services		\$6,811.43		\$6,811.43

LEA : 113362303      Eastern Lancaster County SD

Printed 11/16/2023 8:47:42 AM

General Fund (10)

2200 Support Services – Instructional Staff	Elementary	Secondary	Federal	Total
100 <u>Personnel Services – Salaries</u>				
100 Personnel Services – Salaries	974,670.75	829,172.63	233,946.44	2,037,789.82
<b>Total Personnel Services – Salaries</b>	<b>\$974,670.75</b>	<b>\$829,172.63</b>	<b>\$233,946.44</b>	<b>\$2,037,789.82</b>
200 <u>Personnel Services – Employee Benefits</u>				
210 Group Insurance – Contracted Provider	3,024.93	3,288.68	136.75	6,450.36
220 Social Security Contributions	72,099.55	61,390.35	17,224.06	150,713.96
230 PSERS Retirement Contributions	362,642.36	307,419.97	41,244.78	711,307.11
240 Tuition Reimbursement	117,641.87	87,432.97	10,824.00	215,898.84
260 Workers' Compensation	4,581.28	3,896.93	1,477.38	9,955.59
270 Group Insurance – Self-Insurance	224,646.60	182,120.74	21,105.16	427,872.50
291 Other Retirement Plans	4,374.30	6,024.50		10,398.80
<b>Total Personnel Services – Employee Benefits</b>	<b>\$789,010.89</b>	<b>\$651,574.14</b>	<b>\$92,012.13</b>	<b>\$1,532,597.16</b>
300 <u>Purchased Professional and Technical Services</u>				
329 Professional Educational Services – Other	49,861.01	22,896.53		72,757.54
330 Other Professional Services	10,918.18	10,506.82	3,250.00	24,675.00
360 Employee Training and Development Services	25,836.51	8,717.40		34,553.91
<b>Total Purchased Professional and Technical Services</b>	<b>\$86,615.70</b>	<b>\$42,120.75</b>	<b>\$3,250.00</b>	<b>\$131,986.45</b>
500 <u>Other Purchased Services</u>				
530 Communications	1,002.67	1,001.79		2,004.46
580 Travel	2,656.42	5,841.44		8,497.86
<b>Total Other Purchased Services</b>	<b>\$3,659.09</b>	<b>\$6,843.23</b>		<b>\$10,502.32</b>
600 <u>Supplies</u>				
610 General Supplies	19,704.14	2,613.78		22,317.92
630 Food	2,554.42	2,558.17		5,112.59
640 Books and Periodicals	23,880.05	13,381.03		37,261.08
650 Supplies & Fees – Technology Related	24,069.45	31,176.56		55,246.01
<b>Total Supplies</b>	<b>\$70,208.06</b>	<b>\$49,729.54</b>		<b>\$119,937.60</b>
800 <u>Other Objects</u>				
810 Dues and Fees	2,369.46	1,966.54		4,336.00
<b>Total Other Objects</b>	<b>\$2,369.46</b>	<b>\$1,966.54</b>		<b>\$4,336.00</b>
<b>Total 2200 Support Services – Instructional Staff</b>	<b>\$1,926,533.95</b>	<b>\$1,581,406.83</b>	<b>\$329,208.57</b>	<b>\$3,837,149.35</b>

LEA : 113362303 Eastern Lancaster County SD

Printed 11/16/2023 8:47:42 AM

General Fund (10)

2230 Educational Television Services	<u>Elementary</u>	<u>Secondary</u>	<u>Federal</u>	<u>Total</u>
100 <u>Personnel Services – Salaries</u>				
100 Personnel Services – Salaries		1,134.00		1,134.00
Total Personnel Services – Salaries		\$1,134.00		\$1,134.00
200 <u>Personnel Services – Employee Benefits</u>				
220 Social Security Contributions		85.66		85.66
230 PSERS Retirement Contributions		399.83		399.83
260 Workers’ Compensation		5.23		5.23
Total Personnel Services – Employee Benefits		\$490.72		\$490.72
600 <u>Supplies</u>				
610 General Supplies		(44.65)		(44.65)
650 Supplies & Fees – Technology Related	45.96	4,020.54		4,066.50
Total Supplies	\$45.96	\$3,975.89		\$4,021.85
Total 2230 Educational Television Services	\$45.96	\$5,600.61		\$5,646.57

LEA : 113362303     Eastern Lancaster County SD

Printed 11/16/2023 8:47:42 AM

General Fund (10)

2250 School Library Services	<u>Elementary</u>	<u>Secondary</u>	<u>Federal</u>	<u>Total</u>
100 <u>Personnel Services – Salaries</u>				
100 Personnel Services – Salaries	248,618.65	71,965.50		320,584.15
<b>Total Personnel Services – Salaries</b>	<b>\$248,618.65</b>	<b>\$71,965.50</b>		<b>\$320,584.15</b>
200 <u>Personnel Services – Employee Benefits</u>				
210 Group Insurance – Contracted Provider	643.40	228.31		871.71
220 Social Security Contributions	18,032.84	4,872.32		22,905.16
230 PSERS Retirement Contributions	87,662.71	25,375.14		113,037.85
260 Workers' Compensation	1,118.93	324.11		1,443.04
270 Group Insurance – Self-Insurance	65,847.27	26,854.78		92,702.05
<b>Total Personnel Services – Employee Benefits</b>	<b>\$173,305.15</b>	<b>\$57,654.66</b>		<b>\$230,959.81</b>
300 <u>Purchased Professional and Technical Services</u>				
329 Professional Educational Services – Other	42,774.60	15,797.79		58,572.39
<b>Total Purchased Professional and Technical Services</b>	<b>\$42,774.60</b>	<b>\$15,797.79</b>		<b>\$58,572.39</b>
500 <u>Other Purchased Services</u>				
530 Communications	16.65	52.92		69.57
<b>Total Other Purchased Services</b>	<b>\$16.65</b>	<b>\$52.92</b>		<b>\$69.57</b>
600 <u>Supplies</u>				
610 General Supplies	18,622.22	1,305.91		19,928.13
640 Books and Periodicals	12,493.59	2,345.85		14,839.44
650 Supplies & Fees – Technology Related	1,102.87	5,043.84		6,146.71
<b>Total Supplies</b>	<b>\$32,218.68</b>	<b>\$8,695.60</b>		<b>\$40,914.28</b>
800 <u>Other Objects</u>				
810 Dues and Fees	170.00	60.00		230.00
<b>Total Other Objects</b>	<b>\$170.00</b>	<b>\$60.00</b>		<b>\$230.00</b>
<b>Total 2250 School Library Services</b>	<b>\$497,103.73</b>	<b>\$154,226.47</b>		<b>\$651,330.20</b>

LEA : 113362303 Eastern Lancaster County SD

Printed 11/16/2023 8:47:42 AM

General Fund (10)

2260 Instruction and Curriculum Development Services	Elementary	Secondary	Federal	Total
100 Personnel Services – Salaries				
100 Personnel Services – Salaries	690,190.51	733,644.41	233,946.44	1,657,781.36
Total Personnel Services – Salaries	\$690,190.51	\$733,644.41	\$233,946.44	\$1,657,781.36
200 Personnel Services – Employee Benefits				
210 Group Insurance – Contracted Provider	2,381.53	3,060.37	136.75	5,578.65
220 Social Security Contributions	51,374.11	54,750.82	17,224.06	123,348.99
230 PSERS Retirement Contributions	262,334.66	273,736.53	41,244.78	577,315.97
260 Workers' Compensation	3,301.94	3,467.10	1,477.38	8,246.42
270 Group Insurance – Self-Insurance	158,799.33	155,265.96	21,105.16	335,170.45
291 Other Retirement Plans	4,374.30	6,024.50		10,398.80
Total Personnel Services – Employee Benefits	\$482,565.87	\$496,305.28	\$81,188.13	\$1,060,059.28
300 Purchased Professional and Technical Services				
329 Professional Educational Services – Other	4,977.81	4,790.27		9,768.08
330 Other Professional Services			3,250.00	3,250.00
Total Purchased Professional and Technical Services	\$4,977.81	\$4,790.27	\$3,250.00	\$13,018.08
500 Other Purchased Services				
530 Communications	986.02	948.87		1,934.89
580 Travel	1,650.98	2,003.94		3,654.92
Total Other Purchased Services	\$2,637.00	\$2,952.81		\$5,589.81
600 Supplies				
610 General Supplies	1,060.02	1,331.44		2,391.46
630 Food	260.45	350.63		611.08
640 Books and Periodicals	521.16	501.52		1,022.68
650 Supplies & Fees – Technology Related	2,673.62	2,628.02		5,301.64
Total Supplies	\$4,515.25	\$4,811.61		\$9,326.86
800 Other Objects				
810 Dues and Fees	1,625.11	1,643.89		3,269.00
Total Other Objects	\$1,625.11	\$1,643.89		\$3,269.00
Total 2260 Instruction and Curriculum Development Services	\$1,186,511.55	\$1,244,148.27	\$318,384.57	\$2,749,044.39

LEA : 113362303     Eastern Lancaster County SD

Printed 11/16/2023 8:47:42 AM

General Fund (10)

2270 Instructional Staff Professional Development Services	Elementary	Secondary	Federal	Total
100 <u>Personnel Services – Salaries</u>				
100 Personnel Services – Salaries	35,861.59	22,428.72		58,290.31
<b>Total Personnel Services – Salaries</b>	<b>\$35,861.59</b>	<b>\$22,428.72</b>		<b>\$58,290.31</b>
200 <u>Personnel Services – Employee Benefits</u>				
220 Social Security Contributions	2,692.60	1,681.55		4,374.15
230 PSERS Retirement Contributions	12,644.99	7,908.47		20,553.46
240 Tuition Reimbursement	117,641.87	87,432.97	10,824.00	215,898.84
260 Workers' Compensation	160.41	100.49		260.90
<b>Total Personnel Services – Employee Benefits</b>	<b>\$133,139.87</b>	<b>\$97,123.48</b>	<b>\$10,824.00</b>	<b>\$241,087.35</b>
300 <u>Purchased Professional and Technical Services</u>				
329 Professional Educational Services – Other	2,108.60	2,308.47		4,417.07
330 Other Professional Services	10,918.18	10,506.82		21,425.00
360 Employee Training and Development Services	25,836.51	8,717.40		34,553.91
<b>Total Purchased Professional and Technical Services</b>	<b>\$38,863.29</b>	<b>\$21,532.69</b>		<b>\$60,395.98</b>
500 <u>Other Purchased Services</u>				
580 Travel	1,005.44	3,837.50		4,842.94
<b>Total Other Purchased Services</b>	<b>\$1,005.44</b>	<b>\$3,837.50</b>		<b>\$4,842.94</b>
600 <u>Supplies</u>				
610 General Supplies	21.90	21.08		42.98
630 Food	2,293.97	2,207.54		4,501.51
640 Books and Periodicals	10,865.30	10,533.66		21,398.96
650 Supplies & Fees – Technology Related	20,247.00	19,484.16		39,731.16
<b>Total Supplies</b>	<b>\$33,428.17</b>	<b>\$32,246.44</b>		<b>\$65,674.61</b>
800 <u>Other Objects</u>				
810 Dues and Fees	574.35	262.65		837.00
<b>Total Other Objects</b>	<b>\$574.35</b>	<b>\$262.65</b>		<b>\$837.00</b>
<b>Total 2270 Instructional Staff Professional Development Services</b>	<b>\$242,872.71</b>	<b>\$177,431.48</b>	<b>\$10,824.00</b>	<b>\$431,128.19</b>

LEA : 113362303 Eastern Lancaster County SD

Printed 11/16/2023 8:47:42 AM

General Fund (10)

2300 Support Services – Administration	Elementary	Secondary	Federal	Total
100 Personnel Services – Salaries				
100 Personnel Services – Salaries	543,416.38	473,071.15	482,651.25	2,045,500.07
Total Personnel Services – Salaries	\$543,416.38	\$473,071.15	\$482,651.25	\$2,045,500.07
200 Personnel Services – Employee Benefits				
210 Group Insurance – Contracted Provider	2,439.09	3,298.53	482.75	10,214.35
220 Social Security Contributions	40,748.88	34,869.06	36,390.20	149,595.98
230 PSERS Retirement Contributions	210,123.41	211,009.04	84,562.57	678,567.48
260 Workers' Compensation	2,426.88	1,714.16	3,052.93	9,628.78
270 Group Insurance – Self-Insurance	87,295.04	132,529.94	56,839.47	362,449.29
291 Other Retirement Plans	3,130.80	2,800.88	825.00	47,356.68
Total Personnel Services – Employee Benefits	\$346,164.10	\$386,221.61	\$182,152.92	\$1,257,812.56
300 Purchased Professional and Technical Services				
329 Professional Educational Services – Other	5,135.96			16,335.96
330 Other Professional Services	106,572.00			286,769.13
Total Purchased Professional and Technical Services	\$111,707.96			\$303,105.09
400 Purchased Property Services				
410 Cleaning Services	654.84	334.00		1,111.72
440 Rentals				12,567.50
Total Purchased Property Services	\$654.84	\$334.00		\$13,679.22
500 Other Purchased Services				
520 Insurance – General				400.00
530 Communications	33.08	31.84		5,516.92
549 Other Advertising/Public Relations				5,932.60
550 Printing and Binding	750.03	2,051.00		19,078.88
580 Travel		410.64		1,251.12
Total Other Purchased Services	\$783.11	\$2,493.48		\$32,179.52
600 Supplies				
610 General Supplies	23,856.24	10,131.81		46,303.70
630 Food	4,012.09	6,484.86		23,458.12
640 Books and Periodicals	1,729.50	139.95		4,171.16
650 Supplies & Fees – Technology Related	2,269.70	210.08		14,380.32
Total Supplies	\$31,867.53	\$16,966.70		\$88,313.30
800 Other Objects				
810 Dues and Fees		1,464.58		34,902.21
Total Other Objects		\$1,464.58		\$34,902.21
Total 2300 Support Services – Administration	\$1,034,593.92	\$880,551.52	\$664,804.17	\$3,775,491.97



LEA : 113362303 Eastern Lancaster County SD

Printed 11/16/2023 8:47:42 AM

General Fund (10)

2310 Board Services

Elementary                      Secondary                      Federal                      Total

300 <u>Purchased Professional and Technical Services</u>				
330 Other Professional Services				1,830.00
Total Purchased Professional and Technical Services				\$1,830.00
500 <u>Other Purchased Services</u>				
520 Insurance – General				200.00
549 Other Advertising/Public Relations				5,262.52
580 Travel				80.00
Total Other Purchased Services				\$5,542.52
600 <u>Supplies</u>				
610 General Supplies				1,043.82
650 Supplies & Fees – Technology Related				4,002.99
Total Supplies				\$5,046.81
800 <u>Other Objects</u>				
810 Dues and Fees				16,856.84
Total Other Objects				\$16,856.84
Total 2310 Board Services				\$29,276.17

General Fund (10)				
2320 Board Treasurer Services	<u>Elementary</u>	<u>Secondary</u>	<u>Federal</u>	<u>Total</u>
500 <u>Other Purchased Services</u>				
520 Insurance – General				200.00
Total Other Purchased Services				\$200.00
Total 2320 Board Treasurer Services				\$200.00

LEA : 113362303     Eastern Lancaster County SD

Printed 11/16/2023 8:47:42 AM

General Fund (10)

2330 Tax Assessment and Collection Services	<u>Elementary</u>	<u>Secondary</u>	<u>Federal</u>	<u>Total</u>
300 <u>Purchased Professional and Technical Services</u>				
330 Other Professional Services				92,113.96
Total Purchased Professional and Technical Services				\$92,113.96
500 <u>Other Purchased Services</u>				
530 Communications				5,452.00
550 Printing and Binding				13,299.60
Total Other Purchased Services				\$18,751.60
600 <u>Supplies</u>				
650 Supplies & Fees – Technology Related				7,482.36
Total Supplies				\$7,482.36
800 <u>Other Objects</u>				
810 Dues and Fees				365.88
Total Other Objects				\$365.88
Total 2330 Tax Assessment and Collection Services				\$118,713.80

LEA : 113362303 Eastern Lancaster County SD

Printed 11/16/2023 8:47:42 AM

General Fund (10)

2350 Legal and Accounting Services	<u>Elementary</u>	<u>Secondary</u>	<u>Federal</u>	<u>Total</u>
300 <u>Purchased Professional and Technical Services</u>				
330 Other Professional Services				86,253.17
Total Purchased Professional and Technical Services				\$86,253.17
500 <u>Other Purchased Services</u>				
549 Other Advertising/Public Relations				670.08
Total Other Purchased Services				\$670.08
Total 2350 Legal and Accounting Services				\$86,923.25

LEA : 113362303 Eastern Lancaster County SD

Printed 11/16/2023 8:47:42 AM

General Fund (10)

2360 Office of the Superintendent / Executive Director Services	Elementary	Secondary	Federal	Total
100 <u>Personnel Services – Salaries</u>				
100 Personnel Services – Salaries				494,517.03
Total Personnel Services – Salaries				\$494,517.03
200 <u>Personnel Services – Employee Benefits</u>				
210 Group Insurance – Contracted Provider				3,993.98
220 Social Security Contributions				33,621.78
230 PSERS Retirement Contributions				166,199.31
260 Workers' Compensation				2,203.87
270 Group Insurance – Self-Insurance				85,784.84
291 Other Retirement Plans				40,600.00
Total Personnel Services – Employee Benefits				\$332,403.78
400 <u>Purchased Property Services</u>				
410 Cleaning Services				122.88
Total Purchased Property Services				\$122.88
500 <u>Other Purchased Services</u>				
530 Communications	33.08	31.84		64.92
550 Printing and Binding				803.77
580 Travel				760.48
Total Other Purchased Services	\$33.08	\$31.84		\$1,629.17
600 <u>Supplies</u>				
610 General Supplies				6,932.51
630 Food				7,702.89
640 Books and Periodicals				2,301.71
650 Supplies & Fees – Technology Related				415.19
Total Supplies				\$17,352.30
800 <u>Other Objects</u>				
810 Dues and Fees				16,214.91
Total Other Objects				\$16,214.91
Total 2360 Office of the Superintendent / Executive Director Services	\$33.08	\$31.84		\$862,240.07

LEA : 113362303 Eastern Lancaster County SD

Printed 11/16/2023 8:47:42 AM

General Fund (10)

2380 Office of the Principal Services	Elementary	Secondary	Federal	Total
100 <u>Personnel Services – Salaries</u>				
100 Personnel Services – Salaries	543,416.38	473,071.15	482,651.25	1,499,138.78
Total Personnel Services – Salaries	\$543,416.38	\$473,071.15	\$482,651.25	\$1,499,138.78
200 <u>Personnel Services – Employee Benefits</u>				
210 Group Insurance – Contracted Provider	2,439.09	3,298.53	482.75	6,220.37
220 Social Security Contributions	40,748.88	34,869.06	36,390.20	112,008.14
230 PSERS Retirement Contributions	210,123.41	211,009.04	84,562.57	505,695.02
260 Workers' Compensation	2,426.88	1,714.16	3,052.93	7,193.97
270 Group Insurance – Self-Insurance	87,295.04	132,529.94	56,839.47	276,664.45
291 Other Retirement Plans	3,130.80	2,800.88	825.00	6,756.68
Total Personnel Services – Employee Benefits	\$346,164.10	\$386,221.61	\$182,152.92	\$914,538.63
300 <u>Purchased Professional and Technical Services</u>				
329 Professional Educational Services – Other	5,135.96			5,135.96
330 Other Professional Services	106,572.00			106,572.00
Total Purchased Professional and Technical Services	\$111,707.96			\$111,707.96
400 <u>Purchased Property Services</u>				
410 Cleaning Services	654.84	334.00		988.84
Total Purchased Property Services	\$654.84	\$334.00		\$988.84
500 <u>Other Purchased Services</u>				
550 Printing and Binding	750.03	2,051.00		2,801.03
580 Travel		410.64		410.64
Total Other Purchased Services	\$750.03	\$2,461.64		\$3,211.67
600 <u>Supplies</u>				
610 General Supplies	23,856.24	10,131.81		33,988.05
630 Food	4,012.09	6,484.86		10,496.95
640 Books and Periodicals	1,729.50	139.95		1,869.45
650 Supplies & Fees – Technology Related	2,269.70	210.08		2,479.78
Total Supplies	\$31,867.53	\$16,966.70		\$48,834.23
800 <u>Other Objects</u>				
810 Dues and Fees		1,464.58		1,464.58
Total Other Objects		\$1,464.58		\$1,464.58
Total 2380 Office of the Principal Services	\$1,034,560.84	\$880,519.68	\$664,804.17	\$2,579,884.69

LEA : 113362303      Eastern Lancaster County SD

Printed 11/16/2023 8:47:42 AM

General Fund (10)				
2390 Other Administration Services	<u>Elementary</u>	<u>Secondary</u>	<u>Federal</u>	<u>Total</u>
100 <u>Personnel Services – Salaries</u>				
100 Personnel Services – Salaries				51,844.26
Total Personnel Services – Salaries				\$51,844.26
200 <u>Personnel Services – Employee Benefits</u>				
220 Social Security Contributions				3,966.06
230 PSERS Retirement Contributions				6,673.15
260 Workers’ Compensation				230.94
Total Personnel Services – Employee Benefits				\$10,870.15
300 <u>Purchased Professional and Technical Services</u>				
329 Professional Educational Services – Other				11,200.00
Total Purchased Professional and Technical Services				\$11,200.00
400 <u>Purchased Property Services</u>				
440 Rentals				12,567.50
Total Purchased Property Services				\$12,567.50
500 <u>Other Purchased Services</u>				
550 Printing and Binding				2,174.48
Total Other Purchased Services				\$2,174.48
600 <u>Supplies</u>				
610 General Supplies				4,339.32
630 Food				5,258.28
Total Supplies				\$9,597.60
Total 2390 Other Administration Services				\$98,253.99

LEA : 113362303      Eastern Lancaster County SD

Printed 11/16/2023 8:47:42 AM

<b>General Fund (10)</b>				
<b>2400 Support Services – Pupil Health</b>	<u>Elementary</u>	<u>Secondary</u>	<u>Federal</u>	<u>Total</u>
<b>100 <u>Personnel Services – Salaries</u></b>				
100 Personnel Services – Salaries				564,657.56
<b>Total Personnel Services – Salaries</b>				<b>\$564,657.56</b>
<b>200 <u>Personnel Services – Employee Benefits</u></b>				
210 Group Insurance – Contracted Provider				1,494.28
220 Social Security Contributions				41,511.44
230 PSERS Retirement Contributions				194,838.44
260 Workers' Compensation				2,535.05
270 Group Insurance – Self-Insurance				187,129.16
<b>Total Personnel Services – Employee Benefits</b>				<b>\$427,508.37</b>
<b>300 <u>Purchased Professional and Technical Services</u></b>				
322 Professional Educational Services – Ius				7,197.97
329 Professional Educational Services – Other				49,158.78
330 Other Professional Services				282,194.87
<b>Total Purchased Professional and Technical Services</b>				<b>\$338,551.62</b>
<b>400 <u>Purchased Property Services</u></b>				
410 Cleaning Services				161.42
430 Repairs and Maintenance Services				1,634.00
440 Rentals				129.88
<b>Total Purchased Property Services</b>				<b>\$1,925.30</b>
<b>500 <u>Other Purchased Services</u></b>				
530 Communications				1,670.21
550 Printing and Binding				400.00
580 Travel				174.40
<b>Total Other Purchased Services</b>				<b>\$2,244.61</b>
<b>600 <u>Supplies</u></b>				
610 General Supplies				17,350.76
650 Supplies & Fees – Technology Related				2,814.00
<b>Total Supplies</b>				<b>\$20,164.76</b>
<b>800 <u>Other Objects</u></b>				
810 Dues and Fees				130.00
<b>Total Other Objects</b>				<b>\$130.00</b>
<b>Total 2400 Support Services – Pupil Health</b>				<b>\$1,355,182.22</b>



LEA : 113362303 Eastern Lancaster County SD

Printed 11/16/2023 8:47:42 AM

General Fund (10)

2420 Medical Services

Elementary                      Secondary                      Federal                      Total

100 <u>Personnel Services – Salaries</u>				
100 Personnel Services – Salaries				99,454.26
<b>Total Personnel Services – Salaries</b>				<b>\$99,454.26</b>
200 <u>Personnel Services – Employee Benefits</u>				
210 Group Insurance – Contracted Provider				265.95
220 Social Security Contributions				7,372.36
230 PSERS Retirement Contributions				35,067.56
260 Workers' Compensation				443.17
270 Group Insurance – Self-Insurance				26,877.00
<b>Total Personnel Services – Employee Benefits</b>				<b>\$70,026.04</b>
300 <u>Purchased Professional and Technical Services</u>				
322 Professional Educational Services – lus				7,197.97
330 Other Professional Services				165,188.78
<b>Total Purchased Professional and Technical Services</b>				<b>\$172,386.75</b>
500 <u>Other Purchased Services</u>				
550 Printing and Binding				136.00
<b>Total Other Purchased Services</b>				<b>\$136.00</b>
600 <u>Supplies</u>				
610 General Supplies				500.48
<b>Total Supplies</b>				<b>\$500.48</b>
<b>Total 2420 Medical Services</b>				<b>\$342,503.53</b>

LEA : 113362303     Eastern Lancaster County SD

Printed 11/16/2023 8:47:42 AM

General Fund (10)				
2430 Dental Services	<u>Elementary</u>	<u>Secondary</u>	<u>Federal</u>	<u>Total</u>
300 <u>Purchased Professional and Technical Services</u>				
330 Other Professional Services				435.00
Total Purchased Professional and Technical Services				\$435.00
Total 2430 Dental Services				\$435.00

LEA : 113362303 Eastern Lancaster County SD

Printed 11/16/2023 8:47:42 AM

General Fund (10)

2440 Nursing Services

	<u>Elementary</u>	<u>Secondary</u>	<u>Federal</u>	<u>Total</u>
<b>100 <u>Personnel Services – Salaries</u></b>				
100 Personnel Services – Salaries				454,678.51
<b>Total Personnel Services – Salaries</b>				<b>\$454,678.51</b>
<b>200 <u>Personnel Services – Employee Benefits</u></b>				
210 Group Insurance – Contracted Provider				1,193.10
220 Social Security Contributions				33,375.21
230 PSERS Retirement Contributions				156,059.89
260 Workers' Compensation				2,044.41
270 Group Insurance – Self-Insurance				156,108.87
<b>Total Personnel Services – Employee Benefits</b>				<b>\$348,781.48</b>
<b>300 <u>Purchased Professional and Technical Services</u></b>				
329 Professional Educational Services – Other				49,158.78
330 Other Professional Services				116,571.09
<b>Total Purchased Professional and Technical Services</b>				<b>\$165,729.87</b>
<b>400 <u>Purchased Property Services</u></b>				
410 Cleaning Services				161.42
430 Repairs and Maintenance Services				1,634.00
440 Rentals				129.88
<b>Total Purchased Property Services</b>				<b>\$1,925.30</b>
<b>500 <u>Other Purchased Services</u></b>				
530 Communications				1,670.21
550 Printing and Binding				264.00
580 Travel				174.40
<b>Total Other Purchased Services</b>				<b>\$2,108.61</b>
<b>600 <u>Supplies</u></b>				
610 General Supplies				16,850.28
650 Supplies & Fees – Technology Related				2,814.00
<b>Total Supplies</b>				<b>\$19,664.28</b>
<b>800 <u>Other Objects</u></b>				
810 Dues and Fees				130.00
<b>Total Other Objects</b>				<b>\$130.00</b>
<b>Total 2440 Nursing Services</b>				<b>\$993,018.05</b>

General Fund (10)

2450 Nonpublic Health Services	<u>Elementary</u>	<u>Secondary</u>	<u>Federal</u>	<u>Total</u>
100 <u>Personnel Services – Salaries</u>				
100 Personnel Services – Salaries				10,524.79
Total Personnel Services – Salaries				\$10,524.79
200 <u>Personnel Services – Employee Benefits</u>				
210 Group Insurance – Contracted Provider				35.23
220 Social Security Contributions				763.87
230 PSERS Retirement Contributions				3,710.99
260 Workers' Compensation				47.47
270 Group Insurance – Self-Insurance				4,143.29
Total Personnel Services – Employee Benefits				\$8,700.85
Total 2450 Nonpublic Health Services				\$19,225.64

LEA : 113362303 Eastern Lancaster County SD

Printed 11/16/2023 8:47:42 AM

General Fund (10)

2500 Support Services – Business	Elementary	Secondary	Federal	Total
100 <u>Personnel Services – Salaries</u>				
100 Personnel Services – Salaries				396,778.23
Total Personnel Services – Salaries				\$396,778.23
200 <u>Personnel Services – Employee Benefits</u>				
210 Group Insurance – Contracted Provider				2,211.18
220 Social Security Contributions				24,108.52
230 PSERS Retirement Contributions				131,673.51
260 Workers' Compensation				1,768.22
270 Group Insurance – Self-Insurance				69,441.13
291 Other Retirement Plans				16,400.00
Total Personnel Services – Employee Benefits				\$245,602.56
300 <u>Purchased Professional and Technical Services</u>				
330 Other Professional Services			700.35	5,556.83
Total Purchased Professional and Technical Services			\$700.35	\$5,556.83
400 <u>Purchased Property Services</u>				
410 Cleaning Services				2,942.40
440 Rentals				950.92
Total Purchased Property Services				\$3,893.32
500 <u>Other Purchased Services</u>				
530 Communications				912.11
580 Travel				1,362.12
Total Other Purchased Services				\$2,274.23
600 <u>Supplies</u>				
610 General Supplies				5,211.49
630 Food				10,441.43
650 Supplies & Fees – Technology Related				34,005.09
Total Supplies				\$49,658.01
700 <u>Property</u>				
762 Capitalized Equipment - Replacement				13,305.00
Total Property				\$13,305.00
800 <u>Other Objects</u>				
810 Dues and Fees				1,870.50
Total Other Objects				\$1,870.50
Total 2500 Support Services – Business			\$700.35	\$718,938.68

LEA : 113362303 Eastern Lancaster County SD

Printed 11/16/2023 8:47:42 AM

General Fund (10)

2510 Fiscal Services

	<u>Elementary</u>	<u>Secondary</u>	<u>Federal</u>	<u>Total</u>
<b>100 <u>Personnel Services – Salaries</u></b>				
100 Personnel Services – Salaries				396,778.23
<b>Total Personnel Services – Salaries</b>				<b>\$396,778.23</b>
<b>200 <u>Personnel Services – Employee Benefits</u></b>				
210 Group Insurance – Contracted Provider				2,211.18
220 Social Security Contributions				24,108.52
230 PSERS Retirement Contributions				131,673.51
260 Workers' Compensation				1,768.22
270 Group Insurance – Self-Insurance				69,441.13
291 Other Retirement Plans				16,400.00
<b>Total Personnel Services – Employee Benefits</b>				<b>\$245,602.56</b>
<b>300 <u>Purchased Professional and Technical Services</u></b>				
330 Other Professional Services			700.35	5,556.83
<b>Total Purchased Professional and Technical Services</b>			<b>\$700.35</b>	<b>\$5,556.83</b>
<b>400 <u>Purchased Property Services</u></b>				
410 Cleaning Services				2,942.40
440 Rentals				950.92
<b>Total Purchased Property Services</b>				<b>\$3,893.32</b>
<b>500 <u>Other Purchased Services</u></b>				
530 Communications				912.11
580 Travel				1,362.12
<b>Total Other Purchased Services</b>				<b>\$2,274.23</b>
<b>600 <u>Supplies</u></b>				
610 General Supplies				5,211.49
630 Food				10,441.43
650 Supplies & Fees – Technology Related				34,005.09
<b>Total Supplies</b>				<b>\$49,658.01</b>
<b>700 <u>Property</u></b>				
762 Capitalized Equipment - Replacement				13,305.00
<b>Total Property</b>				<b>\$13,305.00</b>
<b>800 <u>Other Objects</u></b>				
810 Dues and Fees				1,870.50
<b>Total Other Objects</b>				<b>\$1,870.50</b>
<b>Total 2510 Fiscal Services</b>			<b>\$700.35</b>	<b>\$718,938.68</b>

LEA : 113362303 Eastern Lancaster County SD

Printed 11/16/2023 8:47:42 AM

General Fund (10)

2511 Supervision of Fiscal Services - Head of Component	<u>Elementary</u>	<u>Secondary</u>	<u>Federal</u>	<u>Total</u>
100 <u>Personnel Services – Salaries</u>				
100 Personnel Services – Salaries				256,522.08
Total Personnel Services – Salaries				\$256,522.08
200 <u>Personnel Services – Employee Benefits</u>				
210 Group Insurance – Contracted Provider				1,870.88
220 Social Security Contributions				13,719.75
230 PSERS Retirement Contributions				87,709.67
260 Workers' Compensation				1,142.69
270 Group Insurance – Self-Insurance				27,620.98
291 Other Retirement Plans				16,400.00
Total Personnel Services – Employee Benefits				\$148,463.97
400 <u>Purchased Property Services</u>				
410 Cleaning Services				318.98
440 Rentals				950.92
Total Purchased Property Services				\$1,269.90
500 <u>Other Purchased Services</u>				
530 Communications				912.11
580 Travel				232.36
Total Other Purchased Services				\$1,144.47
600 <u>Supplies</u>				
610 General Supplies				2,839.08
630 Food				152.18
650 Supplies & Fees – Technology Related				4,059.75
Total Supplies				\$7,051.01
800 <u>Other Objects</u>				
810 Dues and Fees				507.06
Total Other Objects				\$507.06
Total 2511 Supervision of Fiscal Services - Head of Component				\$414,958.49

LEA : 113362303 Eastern Lancaster County SD

Printed 11/16/2023 8:47:42 AM

General Fund (10)				
2514 Payroll Services	<u>Elementary</u>	<u>Secondary</u>	<u>Federal</u>	<u>Total</u>
600 <u>Supplies</u>				
650 Supplies & Fees – Technology Related				12,104.93
Total Supplies				\$12,104.93
Total 2514 Payroll Services				\$12,104.93



LEA : 113362303 Eastern Lancaster County SD

Printed 11/16/2023 8:47:42 AM

General Fund (10)

2515 Financial Accounting Services	<u>Elementary</u>	<u>Secondary</u>	<u>Federal</u>	<u>Total</u>
100 <u>Personnel Services – Salaries</u>				
100 Personnel Services – Salaries				140,256.15
Total Personnel Services – Salaries				\$140,256.15
200 <u>Personnel Services – Employee Benefits</u>				
210 Group Insurance – Contracted Provider				340.30
220 Social Security Contributions				10,388.77
230 PSERS Retirement Contributions				43,963.84
260 Workers' Compensation				625.53
270 Group Insurance – Self-Insurance				41,820.15
Total Personnel Services – Employee Benefits				\$97,138.59
300 <u>Purchased Professional and Technical Services</u>				
330 Other Professional Services			700.35	700.35
Total Purchased Professional and Technical Services			\$700.35	\$700.35
500 <u>Other Purchased Services</u>				
580 Travel				1,129.76
Total Other Purchased Services				\$1,129.76
600 <u>Supplies</u>				
610 General Supplies				1,295.43
650 Supplies & Fees – Technology Related				14,818.57
Total Supplies				\$16,114.00
Total 2515 Financial Accounting Services			\$700.35	\$255,338.85

LEA : 113362303 Eastern Lancaster County SD

Printed 11/16/2023 8:47:42 AM

General Fund (10)

2517 Property Accounting Services	<u>Elementary</u>	<u>Secondary</u>	<u>Federal</u>	<u>Total</u>
600 <u>Supplies</u>				
650 Supplies & Fees – Technology Related				2,721.84
Total Supplies				\$2,721.84
Total 2517 Property Accounting Services				\$2,721.84

LEA : 113362303      Eastern Lancaster County SD

Printed 11/16/2023 8:47:42 AM

General Fund (10)				
2519 Other Fiscal Services	<u>Elementary</u>	<u>Secondary</u>	<u>Federal</u>	<u>Total</u>
300 <u>Purchased Professional and Technical Services</u>				
330 Other Professional Services				4,856.48
Total Purchased Professional and Technical Services				\$4,856.48
400 <u>Purchased Property Services</u>				
410 Cleaning Services				2,623.42
Total Purchased Property Services				\$2,623.42
600 <u>Supplies</u>				
610 General Supplies				1,076.98
630 Food				10,289.25
650 Supplies & Fees – Technology Related				300.00
Total Supplies				\$11,666.23
700 <u>Property</u>				
762 Capitalized Equipment - Replacement				13,305.00
Total Property				\$13,305.00
800 <u>Other Objects</u>				
810 Dues and Fees				1,363.44
Total Other Objects				\$1,363.44
Total 2519 Other Fiscal Services				\$33,814.57

LEA : 113362303     Eastern Lancaster County SD

Printed 11/16/2023 8:47:42 AM

General Fund (10)

2600 Operation and Maintenance of Plant Services	Elementary	Secondary	Federal	Total
100 <u>Personnel Services – Salaries</u>				
100 Personnel Services – Salaries				743,661.18
Total Personnel Services – Salaries				\$743,661.18
200 <u>Personnel Services – Employee Benefits</u>				
210 Group Insurance – Contracted Provider				2,833.01
220 Social Security Contributions				55,839.59
230 PSERS Retirement Contributions				253,587.79
260 Workers' Compensation				3,319.56
270 Group Insurance – Self-Insurance				170,314.39
291 Other Retirement Plans				1,612.52
Total Personnel Services – Employee Benefits				\$487,506.86
300 <u>Purchased Professional and Technical Services</u>				
330 Other Professional Services				178,950.03
350 Security / Safety Services				41,394.64
Total Purchased Professional and Technical Services				\$220,344.67
400 <u>Purchased Property Services</u>				
410 Cleaning Services				840,153.98
420 Utility Services				58,736.59
430 Repairs and Maintenance Services				777,856.43
440 Rentals				21,483.90
460 Extermination Services				7,029.31
Total Purchased Property Services				\$1,705,260.21
500 <u>Other Purchased Services</u>				
523 General Property and Liability Insurance				251,352.00
530 Communications				41.97
550 Printing and Binding				750.00
580 Travel				377.22
Total Other Purchased Services				\$252,521.19
600 <u>Supplies</u>				
610 General Supplies	206,326.48	222,471.30		428,797.78
620 Energy				919,253.83
630 Food				81.38
650 Supplies & Fees – Technology Related				167,857.87
Total Supplies	\$206,326.48	\$222,471.30		\$1,515,990.86
700 <u>Property</u>				
752 Capital Equipment – Original and Additional				15,890.00
762 Capitalized Equipment - Replacement				251,773.73
Total Property				\$267,663.73
800 <u>Other Objects</u>				
810 Dues and Fees				4,905.47
Total Other Objects				\$4,905.47
Total 2600 Operation and Maintenance of Plant Services	\$206,326.48	\$222,471.30		\$5,197,854.17

LEA : 113362303 Eastern Lancaster County SD

Printed 11/16/2023 8:47:42 AM

General Fund (10)

2610 Supervision of Operation and Maintenance of Plant Services	<u>Elementary</u>	<u>Secondary</u>	<u>Federal</u>	<u>Total</u>
<b>100 <u>Personnel Services – Salaries</u></b>				
100 Personnel Services – Salaries				100,088.00
<b>Total Personnel Services – Salaries</b>				<b>\$100,088.00</b>
<b>200 <u>Personnel Services – Employee Benefits</u></b>				
210 Group Insurance – Contracted Provider				1,238.26
220 Social Security Contributions				7,967.73
230 PSERS Retirement Contributions				34,585.93
260 Workers' Compensation				445.82
270 Group Insurance – Self-Insurance				11,623.75
291 Other Retirement Plans				1,612.52
<b>Total Personnel Services – Employee Benefits</b>				<b>\$57,474.01</b>
<b>500 <u>Other Purchased Services</u></b>				
530 Communications				41.97
580 Travel				377.22
<b>Total Other Purchased Services</b>				<b>\$419.19</b>
<b>600 <u>Supplies</u></b>				
610 General Supplies	127.61	122.81		250.42
630 Food				81.38
650 Supplies & Fees – Technology Related				119.99
<b>Total Supplies</b>	<b>\$127.61</b>	<b>\$122.81</b>		<b>\$451.79</b>
<b>Total 2610 Supervision of Operation and Maintenance of Plant Services</b>	<b>\$127.61</b>	<b>\$122.81</b>		<b>\$158,432.99</b>

LEA : 113362303 Eastern Lancaster County SD

Printed 11/16/2023 8:47:42 AM

General Fund (10)

2611 Supervision of Operation and Maintenance of Plant Services – Head of Component	<u>Elementary</u>	<u>Secondary</u>	<u>Federal</u>	<u>Total</u>
<b>100 <u>Personnel Services – Salaries</u></b>				
100 Personnel Services – Salaries				100,088.00
<b>Total Personnel Services – Salaries</b>				<b>\$100,088.00</b>
<b>200 <u>Personnel Services – Employee Benefits</u></b>				
210 Group Insurance – Contracted Provider				1,238.26
220 Social Security Contributions				7,967.73
230 PSERS Retirement Contributions				34,585.93
260 Workers' Compensation				445.82
270 Group Insurance – Self-Insurance				11,623.75
291 Other Retirement Plans				1,612.52
<b>Total Personnel Services – Employee Benefits</b>				<b>\$57,474.01</b>
<b>500 <u>Other Purchased Services</u></b>				
530 Communications				41.97
580 Travel				377.22
<b>Total Other Purchased Services</b>				<b>\$419.19</b>
<b>600 <u>Supplies</u></b>				
610 General Supplies	127.61	122.81		250.42
630 Food				81.38
650 Supplies & Fees – Technology Related				119.99
<b>Total Supplies</b>	<b>\$127.61</b>	<b>\$122.81</b>		<b>\$451.79</b>
<b>Total 2611 Supervision of Operation and Maintenance of Plant Services – Head of Component</b>	<b>\$127.61</b>	<b>\$122.81</b>		<b>\$158,432.99</b>

LEA : 113362303 Eastern Lancaster County SD

Printed 11/16/2023 8:47:42 AM

General Fund (10)

2620 Operation of Buildings Services	Elementary	Secondary	Federal	Total
100 <u>Personnel Services – Salaries</u>				
100 Personnel Services – Salaries				573,237.74
Total Personnel Services – Salaries				\$573,237.74
200 <u>Personnel Services – Employee Benefits</u>				
210 Group Insurance – Contracted Provider				1,459.85
220 Social Security Contributions				42,587.02
230 PSERS Retirement Contributions				194,750.79
260 Workers' Compensation				2,559.62
270 Group Insurance – Self-Insurance				147,066.89
Total Personnel Services – Employee Benefits				\$388,424.17
300 <u>Purchased Professional and Technical Services</u>				
330 Other Professional Services				1,663.00
Total Purchased Professional and Technical Services				\$1,663.00
400 <u>Purchased Property Services</u>				
410 Cleaning Services				672,992.62
420 Utility Services				58,668.68
430 Repairs and Maintenance Services				383,730.27
440 Rentals				2,400.00
460 Extermination Services				6,279.31
Total Purchased Property Services				\$1,124,070.88
500 <u>Other Purchased Services</u>				
523 General Property and Liability Insurance				251,352.00
550 Printing and Binding				750.00
Total Other Purchased Services				\$252,102.00
600 <u>Supplies</u>				
610 General Supplies	187,387.66	197,559.49		384,947.15
620 Energy				919,253.83
650 Supplies & Fees – Technology Related				66,024.17
Total Supplies	\$187,387.66	\$197,559.49		\$1,370,225.15
700 <u>Property</u>				
762 Capitalized Equipment - Replacement				12,187.45
Total Property				\$12,187.45
800 <u>Other Objects</u>				
810 Dues and Fees				1,216.00
Total Other Objects				\$1,216.00
Total 2620 Operation of Buildings Services	\$187,387.66	\$197,559.49		\$3,723,126.39

LEA : 113362303      Eastern Lancaster County SD

Printed 11/16/2023 8:47:42 AM

General Fund (10)				
2630 Care and Upkeep of Grounds Services	<u>Elementary</u>	<u>Secondary</u>	<u>Federal</u>	<u>Total</u>
100 <u>Personnel Services – Salaries</u>				
100 Personnel Services – Salaries				70,335.44
Total Personnel Services – Salaries				\$70,335.44
200 <u>Personnel Services – Employee Benefits</u>				
210 Group Insurance – Contracted Provider				134.90
220 Social Security Contributions				5,284.84
230 PSERS Retirement Contributions				24,251.07
260 Workers' Compensation				314.12
270 Group Insurance – Self-Insurance				11,623.75
Total Personnel Services – Employee Benefits				\$41,608.68
300 <u>Purchased Professional and Technical Services</u>				
330 Other Professional Services				11,920.60
Total Purchased Professional and Technical Services				\$11,920.60
400 <u>Purchased Property Services</u>				
410 Cleaning Services				167,161.36
430 Repairs and Maintenance Services				61,891.07
460 Extermination Services				750.00
Total Purchased Property Services				\$229,802.43
600 <u>Supplies</u>				
610 General Supplies	10,930.00	16,911.11		27,841.11
Total Supplies				\$10,930.00      \$16,911.11      \$27,841.11
700 <u>Property</u>				
752 Capital Equipment – Original and Additional				15,890.00
762 Capitalized Equipment - Replacement				6,750.00
Total Property				\$22,640.00
Total 2630 Care and Upkeep of Grounds Services	\$10,930.00	\$16,911.11		\$404,148.26



LEA : 113362303 Eastern Lancaster County SD

Printed 11/16/2023 8:47:42 AM

General Fund (10)

2640 Care and Upkeep of Equipment Services	<u>Elementary</u>	<u>Secondary</u>	<u>Federal</u>	<u>Total</u>
400 <u>Purchased Property Services</u>				
430 Repairs and Maintenance Services				293,317.71
440 Rentals				19,083.90
Total Purchased Property Services				\$312,401.61
600 <u>Supplies</u>				
610 General Supplies	1,849.86	1,265.30		3,115.16
Total Supplies	\$1,849.86	\$1,265.30		\$3,115.16
700 <u>Property</u>				
762 Capitalized Equipment - Replacement				44,336.28
Total Property				\$44,336.28
800 <u>Other Objects</u>				
810 Dues and Fees				3,689.47
Total Other Objects				\$3,689.47
Total 2640 Care and Upkeep of Equipment Services	\$1,849.86	\$1,265.30		\$363,542.52

LEA : 113362303     Eastern Lancaster County SD

General Fund (10)

2650 Vehicle Operation and Maintenance Services (Other Than Student Transportation Vehicles)	<u>Elementary</u>	<u>Secondary</u>	<u>Federal</u>	<u>Total</u>
400 <u>Purchased Property Services</u>				
420 Utility Services				67.91
430 Repairs and Maintenance Services				27,712.13
<b>Total Purchased Property Services</b>				<b>\$27,780.04</b>
600 <u>Supplies</u>				
610 General Supplies	2,253.18	2,168.28		4,421.46
<b>Total Supplies</b>	<b>\$2,253.18</b>	<b>\$2,168.28</b>		<b>\$4,421.46</b>
700 <u>Property</u>				
762 Capitalized Equipment - Replacement				188,500.00
<b>Total Property</b>				<b>\$188,500.00</b>
<b>Total 2650 Vehicle Operation and Maintenance Services (Other Than Student Transportation Vehicles)</b>	<b>\$2,253.18</b>	<b>\$2,168.28</b>		<b>\$220,701.50</b>

LEA : 113362303 Eastern Lancaster County SD

Printed 11/16/2023 8:47:42 AM

General Fund (10)

2660 Safety and Security Services	<u>Elementary</u>	<u>Secondary</u>	<u>Federal</u>	<u>Total</u>
300 <u>Purchased Professional and Technical Services</u>				
330 Other Professional Services				95,520.00
350 Security / Safety Services				41,394.64
Total Purchased Professional and Technical Services				\$136,914.64
400 <u>Purchased Property Services</u>				
430 Repairs and Maintenance Services				11,205.25
Total Purchased Property Services				\$11,205.25
600 <u>Supplies</u>				
610 General Supplies	2,580.61	3,291.87		5,872.48
650 Supplies & Fees – Technology Related				101,713.71
Total Supplies	\$2,580.61	\$3,291.87		\$107,586.19
Total 2660 Safety and Security Services	\$2,580.61	\$3,291.87		\$255,706.08

General Fund (10)

2690 Other Operation and Maintenance of Plant Services	<u>Elementary</u>	<u>Secondary</u>	<u>Federal</u>	<u>Total</u>
300 <u>Purchased Professional and Technical Services</u>				
330 Other Professional Services				69,846.43
Total Purchased Professional and Technical Services				\$69,846.43
600 <u>Supplies</u>				
610 General Supplies	1,197.56	1,152.44		2,350.00
Total Supplies	\$1,197.56	\$1,152.44		\$2,350.00
Total 2690 Other Operation and Maintenance of Plant Services	\$1,197.56	\$1,152.44		\$72,196.43

LEA : 113362303      Eastern Lancaster County SD

Printed 11/16/2023 8:47:42 AM

General Fund (10)				
2700 Student Transportation Services	<u>Elementary</u>	<u>Secondary</u>	<u>Federal</u>	<u>Total</u>
100 <u>Personnel Services – Salaries</u>				
100 Personnel Services – Salaries				113,533.74
Total Personnel Services – Salaries				\$113,533.74
200 <u>Personnel Services – Employee Benefits</u>				
210 Group Insurance – Contracted Provider				446.54
220 Social Security Contributions				8,672.49
230 PSERS Retirement Contributions				38,123.56
260 Workers' Compensation				506.96
270 Group Insurance – Self-Insurance				18,919.12
Total Personnel Services – Employee Benefits				\$66,668.67
300 <u>Purchased Professional and Technical Services</u>				
390 Other Purchased Professional and Technical Services				287,123.00
Total Purchased Professional and Technical Services				\$287,123.00
400 <u>Purchased Property Services</u>				
430 Repairs and Maintenance Services				12,872.50
Total Purchased Property Services				\$12,872.50
500 <u>Other Purchased Services</u>				
513 Contracted Carriers				2,735,920.99
516 Student Transportation Services From the IU				10,682.51
530 Communications				137.14
Total Other Purchased Services				\$2,746,740.64
600 <u>Supplies</u>				
610 General Supplies				5,620.11
620 Energy				78,118.15
650 Supplies & Fees – Technology Related				9,611.71
Total Supplies				\$93,349.97
700 <u>Property</u>				
752 Capital Equipment – Original and Additional				4,321.56
Total Property				\$4,321.56
Total 2700 Student Transportation Services				\$3,324,610.08

LEA : 113362303 Eastern Lancaster County SD

Printed 11/16/2023 8:47:42 AM

General Fund (10)

2710 Supervision of Student Transportation Services	<u>Elementary</u>	<u>Secondary</u>	<u>Federal</u>	<u>Total</u>
<b>100 <u>Personnel Services – Salaries</u></b>				
100 Personnel Services – Salaries				113,533.74
<b>Total Personnel Services – Salaries</b>				<b>\$113,533.74</b>
<b>200 <u>Personnel Services – Employee Benefits</u></b>				
210 Group Insurance – Contracted Provider				446.54
220 Social Security Contributions				8,672.49
230 PSERS Retirement Contributions				38,123.56
260 Workers' Compensation				506.96
270 Group Insurance – Self-Insurance				18,919.12
<b>Total Personnel Services – Employee Benefits</b>				<b>\$66,668.67</b>
<b>300 <u>Purchased Professional and Technical Services</u></b>				
330 Other Professional Services				(260.00)
<b>Total Purchased Professional and Technical Services</b>				<b>(\$260.00)</b>
<b>400 <u>Purchased Property Services</u></b>				
430 Repairs and Maintenance Services				418.18
<b>Total Purchased Property Services</b>				<b>\$418.18</b>
<b>500 <u>Other Purchased Services</u></b>				
530 Communications				116.00
<b>Total Other Purchased Services</b>				<b>\$116.00</b>
<b>Total 2710 Supervision of Student Transportation Services</b>				<b>\$180,476.59</b>

General Fund (10)

2711 Supervision of Student Transportation Services – Head of Component	<u>Elementary</u>	<u>Secondary</u>	<u>Federal</u>	<u>Total</u>
<b>100 <u>Personnel Services – Salaries</u></b>				
100 Personnel Services – Salaries				113,533.74
<b>Total Personnel Services – Salaries</b>				<b>\$113,533.74</b>
<b>200 <u>Personnel Services – Employee Benefits</u></b>				
210 Group Insurance – Contracted Provider				446.54
220 Social Security Contributions				8,672.49
230 PSERS Retirement Contributions				38,123.56
260 Workers' Compensation				506.96
270 Group Insurance – Self-Insurance				18,919.12
<b>Total Personnel Services – Employee Benefits</b>				<b>\$66,668.67</b>
<b>300 <u>Purchased Professional and Technical Services</u></b>				
330 Other Professional Services				(260.00)
<b>Total Purchased Professional and Technical Services</b>				<b>(\$260.00)</b>
<b>400 <u>Purchased Property Services</u></b>				
430 Repairs and Maintenance Services				418.18
<b>Total Purchased Property Services</b>				<b>\$418.18</b>
<b>500 <u>Other Purchased Services</u></b>				
530 Communications				116.00
<b>Total Other Purchased Services</b>				<b>\$116.00</b>
<b>Total 2711 Supervision of Student Transportation Services – Head of Component</b>				<b>\$180,476.59</b>

LEA : 113362303     Eastern Lancaster County SD

Printed 11/16/2023 8:47:42 AM

General Fund (10)				
2720 Vehicle Operation Services				
	<u>Elementary</u>	<u>Secondary</u>	<u>Federal</u>	<u>Total</u>
300 <u>Purchased Professional and Technical Services</u>				
330 Other Professional Services				260.00
390 Other Purchased Professional and Technical Services				244,152.00
Total Purchased Professional and Technical Services				\$244,412.00
400 <u>Purchased Property Services</u>				
430 Repairs and Maintenance Services				12,454.32
Total Purchased Property Services				\$12,454.32
500 <u>Other Purchased Services</u>				
513 Contracted Carriers				2,166,106.66
516 Student Transportation Services From the IU				10,682.51
530 Communications				21.14
Total Other Purchased Services				\$2,176,810.31
600 <u>Supplies</u>				
610 General Supplies				5,620.11
620 Energy				78,118.15
650 Supplies & Fees – Technology Related				9,611.71
Total Supplies				\$93,349.97
700 <u>Property</u>				
752 Capital Equipment – Original and Additional				4,321.56
Total Property				\$4,321.56
Total 2720 Vehicle Operation Services				\$2,531,348.16



General Fund (10)

2750 Nonpublic Transportation	<u>Elementary</u>	<u>Secondary</u>	<u>Federal</u>	<u>Total</u>
300 <u>Purchased Professional and Technical Services</u>				
390 Other Purchased Professional and Technical Services				42,971.00
Total Purchased Professional and Technical Services				\$42,971.00
500 <u>Other Purchased Services</u>				
513 Contracted Carriers				569,814.33
Total Other Purchased Services				\$569,814.33
Total 2750 Nonpublic Transportation				\$612,785.33

LEA : 113362303 Eastern Lancaster County SD

Printed 11/16/2023 8:47:42 AM

General Fund (10)

2800 Support Services – Central	Elementary	Secondary	Federal	Total
100 <u>Personnel Services – Salaries</u>				
100 Personnel Services – Salaries				1,210,356.17
Total Personnel Services – Salaries				\$1,210,356.17
200 <u>Personnel Services – Employee Benefits</u>				
210 Group Insurance – Contracted Provider				4,772.70
220 Social Security Contributions				88,186.12
230 PSERS Retirement Contributions				391,053.33
240 Tuition Reimbursement				48,610.00
260 Workers' Compensation				5,407.38
270 Group Insurance – Self-Insurance				280,593.46
291 Other Retirement Plans				3,375.00
Total Personnel Services – Employee Benefits				\$821,997.99
300 <u>Purchased Professional and Technical Services</u>				
330 Other Professional Services				105,208.35
340 Technical Services				124,915.10
360 Employee Training and Development Services				48,522.37
Total Purchased Professional and Technical Services				\$278,645.82
400 <u>Purchased Property Services</u>				
430 Repairs and Maintenance Services				110,094.25
440 Rentals				44.00
Total Purchased Property Services				\$110,138.25
500 <u>Other Purchased Services</u>				
530 Communications			5,201.50	182,953.89
549 Other Advertising/Public Relations				816.26
580 Travel				34,545.37
Total Other Purchased Services			\$5,201.50	\$218,315.52
600 <u>Supplies</u>				
610 General Supplies				6,392.07
650 Supplies & Fees – Technology Related				480,759.89
Total Supplies				\$487,151.96
700 <u>Property</u>				
738 Technology Software Lease and Other Right-to-Use Arrangements				100,949.72
752 Capital Equipment – Original and Additional				15,781.19
756 Capitalized Technology Equipment – Original				23,648.19
762 Capitalized Equipment - Replacement				10,493.00
766 Capitalized Technology Equipment – Replacement				317,633.92
Total Property				\$468,506.02
800 <u>Other Objects</u>				
810 Dues and Fees				10,829.94
Total Other Objects				\$10,829.94
Total 2800 Support Services – Central			\$5,201.50	\$3,605,941.67

LEA : 113362303 Eastern Lancaster County SD

Printed 11/16/2023 8:47:42 AM

General Fund (10)

2810 Planning, Research, Development and Evaluation Services

Elementary                      Secondary                      Federal                      Total

100 <u>Personnel Services – Salaries</u>				
100 Personnel Services – Salaries				796,522.01
<b>Total Personnel Services – Salaries</b>				<b>\$796,522.01</b>
200 <u>Personnel Services – Employee Benefits</u>				
210 Group Insurance – Contracted Provider				2,765.09
220 Social Security Contributions				58,688.16
230 PSERS Retirement Contributions				270,861.21
260 Workers' Compensation				3,554.66
270 Group Insurance – Self-Insurance				206,067.49
<b>Total Personnel Services – Employee Benefits</b>				<b>\$541,936.61</b>
300 <u>Purchased Professional and Technical Services</u>				
330 Other Professional Services				56,455.80
340 Technical Services				124,915.10
<b>Total Purchased Professional and Technical Services</b>				<b>\$181,370.90</b>
400 <u>Purchased Property Services</u>				
430 Repairs and Maintenance Services				110,094.25
440 Rentals				44.00
<b>Total Purchased Property Services</b>				<b>\$110,138.25</b>
500 <u>Other Purchased Services</u>				
530 Communications			5,201.50	182,953.89
549 Other Advertising/Public Relations				22.00
580 Travel				97.38
<b>Total Other Purchased Services</b>			<b>\$5,201.50</b>	<b>\$183,073.27</b>
600 <u>Supplies</u>				
610 General Supplies				2,209.12
650 Supplies & Fees – Technology Related				446,359.94
<b>Total Supplies</b>				<b>\$448,569.06</b>
700 <u>Property</u>				
738 Technology Software Lease and Other Right-to-Use Arrangements				100,949.72
752 Capital Equipment – Original and Additional				15,781.19
756 Capitalized Technology Equipment – Original				23,648.19
762 Capitalized Equipment - Replacement				10,493.00
766 Capitalized Technology Equipment – Replacement				317,633.92
<b>Total Property</b>				<b>\$468,506.02</b>
800 <u>Other Objects</u>				
810 Dues and Fees				4,429.94
<b>Total Other Objects</b>				<b>\$4,429.94</b>
<b>Total 2810 Planning, Research, Development and Evaluation Services</b>			<b>\$5,201.50</b>	<b>\$2,734,546.06</b>

LEA : 113362303     Eastern Lancaster County SD

Printed 11/16/2023 8:47:42 AM

General Fund (10)

2820 Information Services

<u>Elementary</u>	<u>Secondary</u>	<u>Federal</u>	<u>Total</u>
-------------------	------------------	----------------	--------------

300 Purchased Professional and Technical Services

330 Other Professional Services			18,412.50
---------------------------------	--	--	-----------

<b>Total Purchased Professional and Technical Services</b>			<b>\$18,412.50</b>
--	--	--	--------------------

<b>Total 2820 Information Services</b>			<b>\$18,412.50</b>
--	--	--	--------------------

General Fund (10)

2823 Public Information Services

<u>Elementary</u>	<u>Secondary</u>	<u>Federal</u>	<u>Total</u>
-------------------	------------------	----------------	--------------

300 Purchased Professional and Technical Services

330 Other Professional Services			18,412.50
---------------------------------	--	--	-----------

<b>Total Purchased Professional and Technical Services</b>			<b>\$18,412.50</b>
--	--	--	--------------------

<b>Total 2823 Public Information Services</b>			<b>\$18,412.50</b>
---	--	--	--------------------

LEA : 113362303     Eastern Lancaster County SD

Printed 11/16/2023 8:47:42 AM

General Fund (10)

2830 Staff Services

	<u>Elementary</u>	<u>Secondary</u>	<u>Federal</u>	<u>Total</u>
<b>100 <u>Personnel Services – Salaries</u></b>				
100 Personnel Services – Salaries				413,834.16
<b>Total Personnel Services – Salaries</b>				<b>\$413,834.16</b>
<b>200 <u>Personnel Services – Employee Benefits</u></b>				
210 Group Insurance – Contracted Provider				2,007.61
220 Social Security Contributions				29,497.96
230 PSERS Retirement Contributions				120,192.12
240 Tuition Reimbursement				48,610.00
260 Workers' Compensation				1,852.72
270 Group Insurance – Self-Insurance				74,525.97
291 Other Retirement Plans				3,375.00
<b>Total Personnel Services – Employee Benefits</b>				<b>\$280,061.38</b>
<b>300 <u>Purchased Professional and Technical Services</u></b>				
330 Other Professional Services				30,340.05
360 Employee Training and Development Services				48,522.37
<b>Total Purchased Professional and Technical Services</b>				<b>\$78,862.42</b>
<b>500 <u>Other Purchased Services</u></b>				
549 Other Advertising/Public Relations				794.26
580 Travel				34,447.99
<b>Total Other Purchased Services</b>				<b>\$35,242.25</b>
<b>600 <u>Supplies</u></b>				
610 General Supplies				4,182.95
650 Supplies & Fees – Technology Related				34,399.95
<b>Total Supplies</b>				<b>\$38,582.90</b>
<b>800 <u>Other Objects</u></b>				
810 Dues and Fees				6,400.00
<b>Total Other Objects</b>				<b>\$6,400.00</b>
<b>Total 2830 Staff Services</b>				<b>\$852,983.11</b>

LEA : 113362303     Eastern Lancaster County SD

Printed 11/16/2023 8:47:42 AM

General Fund (10)				
2831 Supervision of Staff Services	<u>Elementary</u>	<u>Secondary</u>	<u>Federal</u>	<u>Total</u>
100 <u>Personnel Services – Salaries</u>				
100 Personnel Services – Salaries				354,903.39
Total Personnel Services – Salaries				\$354,903.39
200 <u>Personnel Services – Employee Benefits</u>				
210 Group Insurance – Contracted Provider				2,007.61
220 Social Security Contributions				25,132.09
230 PSERS Retirement Contributions				117,034.23
260 Workers' Compensation				1,582.80
270 Group Insurance – Self-Insurance				74,525.97
291 Other Retirement Plans				3,375.00
Total Personnel Services – Employee Benefits				\$223,657.70
300 <u>Purchased Professional and Technical Services</u>				
330 Other Professional Services				9,438.20
Total Purchased Professional and Technical Services				\$9,438.20
500 <u>Other Purchased Services</u>				
580 Travel				1,007.91
Total Other Purchased Services				\$1,007.91
600 <u>Supplies</u>				
610 General Supplies				4,182.95
650 Supplies & Fees – Technology Related				9,264.37
Total Supplies				\$13,447.32
Total 2831 Supervision of Staff Services				\$602,454.52

LEA : 113362303      Eastern Lancaster County SD

Printed 11/16/2023 8:47:42 AM

General Fund (10)					
2832 Recruitment and Placement Services		<u>Elementary</u>	<u>Secondary</u>	<u>Federal</u>	<u>Total</u>
100	<u>Personnel Services – Salaries</u>				
100	Personnel Services – Salaries				250.00
Total Personnel Services – Salaries					\$250.00
200	<u>Personnel Services – Employee Benefits</u>				
220	Social Security Contributions				18.29
260	Workers' Compensation				1.12
Total Personnel Services – Employee Benefits					\$19.41
300	<u>Purchased Professional and Technical Services</u>				
330	Other Professional Services				1,523.00
Total Purchased Professional and Technical Services					\$1,523.00
500	<u>Other Purchased Services</u>				
549	Other Advertising/Public Relations				794.26
Total Other Purchased Services					\$794.26
600	<u>Supplies</u>				
650	Supplies & Fees – Technology Related				19,407.40
Total Supplies					\$19,407.40
800	<u>Other Objects</u>				
810	Dues and Fees				1,310.00
Total Other Objects					\$1,310.00
Total 2832 Recruitment and Placement Services					\$23,304.07



LEA : 113362303     Eastern Lancaster County SD

Printed 11/16/2023 8:47:42 AM

General Fund (10)

2833 Staff Accounting Services

<u>Elementary</u>	<u>Secondary</u>	<u>Federal</u>	<u>Total</u>
-------------------	------------------	----------------	--------------

600 Supplies

650 Supplies & Fees – Technology Related				5,728.18
--	--	--	--	----------

<b>Total Supplies</b>				<b>\$5,728.18</b>
-----------------------	--	--	--	-------------------

<b>Total 2833 Staff Accounting Services</b>				<b>\$5,728.18</b>
---	--	--	--	-------------------

LEA : 113362303 Eastern Lancaster County SD

Printed 11/16/2023 8:47:42 AM

General Fund (10)

2834 Staff Development Services – Non-Instructional, Certified Staff Only	<u>Elementary</u>	<u>Secondary</u>	<u>Federal</u>	<u>Total</u>
<b>100 <u>Personnel Services – Salaries</u></b>				
100 Personnel Services – Salaries				726.00
<b>Total Personnel Services – Salaries</b>				<b>\$726.00</b>
<b>200 <u>Personnel Services – Employee Benefits</u></b>				
220 Social Security Contributions				53.73
230 PSERS Retirement Contributions				256.00
240 Tuition Reimbursement				48,610.00
260 Workers' Compensation				3.24
<b>Total Personnel Services – Employee Benefits</b>				<b>\$48,922.97</b>
<b>300 <u>Purchased Professional and Technical Services</u></b>				
360 Employee Training and Development Services				31,612.97
<b>Total Purchased Professional and Technical Services</b>				<b>\$31,612.97</b>
<b>500 <u>Other Purchased Services</u></b>				
580 Travel				22,161.09
<b>Total Other Purchased Services</b>				<b>\$22,161.09</b>
<b>800 <u>Other Objects</u></b>				
810 Dues and Fees				4,840.00
<b>Total Other Objects</b>				<b>\$4,840.00</b>
<b>Total 2834 Staff Development Services – Non-Instructional, Certified Staff Only</b>				<b>\$108,263.03</b>

General Fund (10)

2835 Health Services

	<u>Elementary</u>	<u>Secondary</u>	<u>Federal</u>	<u>Total</u>
<b>100 <u>Personnel Services – Salaries</u></b>				
100 Personnel Services – Salaries				8,229.77
<b>Total Personnel Services – Salaries</b>				<b>\$8,229.77</b>
<b>200 <u>Personnel Services – Employee Benefits</u></b>				
220 Social Security Contributions				624.76
230 PSERS Retirement Contributions				2,901.89
260 Workers’ Compensation				36.98
<b>Total Personnel Services – Employee Benefits</b>				<b>\$3,563.63</b>
<b>300 <u>Purchased Professional and Technical Services</u></b>				
330 Other Professional Services				13,102.85
<b>Total Purchased Professional and Technical Services</b>				<b>\$13,102.85</b>
<b>Total 2835 Health Services</b>				<b>\$24,896.25</b>

General Fund (10)

2836 Staff Development Services – Non-Instructional, Non-Certified Staff Only	<u>Elementary</u>	<u>Secondary</u>	<u>Federal</u>	<u>Total</u>
300 <u>Purchased Professional and Technical Services</u>				
360 Employee Training and Development Services				16,909.40
Total Purchased Professional and Technical Services				\$16,909.40
500 <u>Other Purchased Services</u>				
580 Travel				11,278.99
Total Other Purchased Services				\$11,278.99
800 <u>Other Objects</u>				
810 Dues and Fees				250.00
Total Other Objects				\$250.00
Total 2836 Staff Development Services – Non-Instructional, Non-Certified Staff Only				\$28,438.39

General Fund (10)

2839 Other Staff Services	<u>Elementary</u>	<u>Secondary</u>	<u>Federal</u>	<u>Total</u>
100 <u>Personnel Services – Salaries</u>				
100 Personnel Services – Salaries				49,725.00
Total Personnel Services – Salaries				\$49,725.00
200 <u>Personnel Services – Employee Benefits</u>				
220 Social Security Contributions				3,669.09
260 Workers’ Compensation				228.58
Total Personnel Services – Employee Benefits				\$3,897.67
300 <u>Purchased Professional and Technical Services</u>				
330 Other Professional Services				6,276.00
Total Purchased Professional and Technical Services				\$6,276.00
Total 2839 Other Staff Services				\$59,898.67

General Fund (10)

2900 Other Support Services	<u>Elementary</u>	<u>Secondary</u>	<u>Federal</u>	<u>Total</u>
200 <u>Personnel Services – Employee Benefits</u>				
230 PSERS Retirement Contributions				3,170.59
Total Personnel Services – Employee Benefits				\$3,170.59
500 <u>Other Purchased Services</u>				
595 IU Payments By Withholding				36,659.70
Total Other Purchased Services				\$36,659.70
Total 2900 Other Support Services				\$39,830.29

General Fund (10)

2910 Support Services Not Listed Elsewhere In the 2000 Series	<u>Elementary</u>	<u>Secondary</u>	<u>Federal</u>	<u>Total</u>
200 <u>Personnel Services – Employee Benefits</u>				
230 PSERS Retirement Contributions				3,170.59
Total Personnel Services – Employee Benefits				\$3,170.59
500 <u>Other Purchased Services</u>				
595 IU Payments By Withholding				36,659.70
Total Other Purchased Services				\$36,659.70
Total 2910 Support Services Not Listed Elsewhere In the 2000 Series				\$39,830.29

LEA : 113362303 Eastern Lancaster County SD

Printed 11/16/2023 8:47:46 AM

General Fund (10)

3000 Operation of Non-Instructional Services		Total
100	<u>Personnel Services – Salaries</u>	
100	Personnel Services – Salaries	710,417.06
Total Personnel Services – Salaries		\$710,417.06
200	<u>Personnel Services – Employee Benefits</u>	
210	Group Insurance – Contracted Provider	672.98
220	Social Security Contributions	53,751.42
230	PSERS Retirement Contributions	171,653.09
260	Workers' Compensation	3,166.53
270	Group Insurance – Self-Insurance	23,247.50
Total Personnel Services – Employee Benefits		\$252,491.52
300	<u>Purchased Professional and Technical Services</u>	
329	Professional Educational Services – Other	1,536.65
340	Technical Services	46,308.00
350	Security / Safety Services	6,551.53
390	Other Purchased Professional and Technical Services	3,571.12
Total Purchased Professional and Technical Services		\$57,967.30
400	<u>Purchased Property Services</u>	
430	Repairs and Maintenance Services	40,213.83
440	Rentals	2,010.00
Total Purchased Property Services		\$42,223.83
500	<u>Other Purchased Services</u>	
510	Student Transportation Services	65,483.84
520	Insurance – General	200.00
530	Communications	164.08
550	Printing and Binding	195.00
580	Travel	3,322.67
Total Other Purchased Services		\$69,365.59
600	<u>Supplies</u>	
610	General Supplies	93,000.47
630	Food	2,392.92
640	Books and Periodicals	6,231.07
650	Supplies & Fees – Technology Related	15,120.61
Total Supplies		\$116,745.07
700	<u>Property</u>	
762	Capitalized Equipment - Replacement	31,224.03
Total Property		\$31,224.03
800	<u>Other Objects</u>	
810	Dues and Fees	11,250.89
Total Other Objects		\$11,250.89
Total 3000 Operation of Non-Instructional Services		\$1,291,685.29



LEA : 113362303      Eastern Lancaster County SD

Printed 11/16/2023 8:47:46 AM

General Fund (10)				
3200 Student Activities				
	<u>Elementary</u>	<u>Secondary</u>	<u>Federal</u>	<u>Total</u>
100 <u>Personnel Services – Salaries</u>				
100 Personnel Services – Salaries				705,871.31
Total Personnel Services – Salaries				\$705,871.31
200 <u>Personnel Services – Employee Benefits</u>				
210 Group Insurance – Contracted Provider				672.98
220 Social Security Contributions				53,412.11
230 PSERS Retirement Contributions				170,050.41
260 Workers' Compensation				3,146.40
270 Group Insurance – Self-Insurance				23,247.50
Total Personnel Services – Employee Benefits				\$250,529.40
300 <u>Purchased Professional and Technical Services</u>				
329 Professional Educational Services – Other				1,536.65
340 Technical Services				46,308.00
350 Security / Safety Services				6,551.53
390 Other Purchased Professional and Technical Services				3,571.12
Total Purchased Professional and Technical Services				\$57,967.30
400 <u>Purchased Property Services</u>				
430 Repairs and Maintenance Services				40,213.83
440 Rentals				2,010.00
Total Purchased Property Services				\$42,223.83
500 <u>Other Purchased Services</u>				
510 Student Transportation Services				65,483.84
520 Insurance – General				200.00
530 Communications				164.08
550 Printing and Binding				195.00
580 Travel				2,772.67
Total Other Purchased Services				\$68,815.59
600 <u>Supplies</u>				
610 General Supplies				89,913.78
630 Food				2,045.10
650 Supplies & Fees – Technology Related				15,120.61
Total Supplies				\$107,079.49
700 <u>Property</u>				
762 Capitalized Equipment - Replacement				31,224.03
Total Property				\$31,224.03
800 <u>Other Objects</u>				
810 Dues and Fees				11,250.89
Total Other Objects				\$11,250.89
Total 3200 Student Activities				\$1,274,961.84

LEA : 113362303 Eastern Lancaster County SD

Printed 11/16/2023 8:47:46 AM

General Fund (10)

3300 Community Services

Elementary                      Secondary                      Federal                      Total

100 <u>Personnel Services – Salaries</u>				
100 Personnel Services – Salaries				4,545.75
<b>Total Personnel Services – Salaries</b>				<b>\$4,545.75</b>
200 <u>Personnel Services – Employee Benefits</u>				
220 Social Security Contributions				339.31
230 PSERS Retirement Contributions				1,602.68
260 Workers’ Compensation				20.13
<b>Total Personnel Services – Employee Benefits</b>				<b>\$1,962.12</b>
500 <u>Other Purchased Services</u>				
580 Travel			550.00	550.00
<b>Total Other Purchased Services</b>			<b>\$550.00</b>	<b>\$550.00</b>
600 <u>Supplies</u>				
610 General Supplies			3,086.69	3,086.69
630 Food			347.82	347.82
640 Books and Periodicals			5,842.62	6,231.07
<b>Total Supplies</b>			<b>\$9,277.13</b>	<b>\$9,665.58</b>
<b>Total 3300 Community Services</b>			<b>\$9,827.13</b>	<b>\$16,723.45</b>

General Fund (10)

4000 Facilities Acquisition, Construction and Improvement Services		<u>Total</u>
300 <u>Purchased Professional and Technical Services</u>		
330 Other Professional Services		69,378.02
Total Purchased Professional and Technical Services		\$69,378.02
700 <u>Property</u>		
710 Land and Improvements		73,190.00
762 Capitalized Equipment - Replacement		65,180.00
Total Property		\$138,370.00
Total 4000 Facilities Acquisition, Construction and Improvement Services		\$207,748.02

LEA : 113362303     Eastern Lancaster County SD

Printed 11/16/2023 8:47:48 AM

General Fund (10)

4200 Existing Site Improvement Services	<u>Elementary</u>	<u>Secondary</u>	<u>Federal</u>	<u>Total</u>
300 <u>Purchased Professional and Technical Services</u>				
330 Other Professional Services				6,469.20
Total Purchased Professional and Technical Services				\$6,469.20
700 <u>Property</u>				
710 Land and Improvements				73,190.00
Total Property				\$73,190.00
Total 4200 Existing Site Improvement Services				\$79,659.20

LEA : 113362303     Eastern Lancaster County SD

Printed 11/16/2023 8:47:48 AM

General Fund (10)

4300 Architecture and Engineering Services / Educational Specifications Development – Original and Additional	<u>Elementary</u>	<u>Secondary</u>	<u>Federal</u>	<u>Total</u>
300 <u>Purchased Professional and Technical Services</u>				
330 Other Professional Services				20,500.00
<b>Total Purchased Professional and Technical Services</b>				<b>\$20,500.00</b>
<b>Total 4300 Architecture and Engineering Services / Educational Specifications Development – Original and Additional</b>				<b>\$20,500.00</b>

General Fund (10)

4400 Architecture and Engineering Services / Educational Specifications – Improvements	<u>Elementary</u>	<u>Secondary</u>	<u>Federal</u>	<u>Total</u>
300 <u>Purchased Professional and Technical Services</u>				
330 Other Professional Services				(122.50)
Total Purchased Professional and Technical Services				(\$122.50)
Total 4400 Architecture and Engineering Services / Educational Specifications – Improvements				(\$122.50)

LEA : 113362303     Eastern Lancaster County SD

Printed 11/16/2023 8:47:48 AM

General Fund (10)

4600 Existing Building Improvement Services	<u>Elementary</u>	<u>Secondary</u>	<u>Federal</u>	<u>Total</u>
300 <u>Purchased Professional and Technical Services</u>				
330 Other Professional Services				42,531.32
Total Purchased Professional and Technical Services				\$42,531.32
700 <u>Property</u>				
762 Capitalized Equipment - Replacement				65,180.00
Total Property				\$65,180.00
Total 4600 Existing Building Improvement Services				\$107,711.32

General Fund (10)

<b>5000 Other Expenditures and Financing Uses</b>		<b><u>Total</u></b>
<b>800 <u>Other Objects</u></b>		
880 Refunds of Prior Years' Receipts	21,651.32	
<b>Total Other Objects</b>	<b>\$21,651.32</b>	
<b>900 <u>Other Uses of Funds</u></b>		
932 Capital Reserve Fund Transfers Applicable To Fund 32	6,025,000.00	
939 Other Fund Transfers	9,059.76	
<b>Total Other Uses of Funds</b>	<b>\$6,034,059.76</b>	
<b>Total 5000 Other Expenditures and Financing Uses</b>	<b>\$6,055,711.08</b>	



General Fund (10)

5100 Debt Service / Other Expenditures and Financing Uses	<u>Elementary</u>	<u>Secondary</u>	<u>Federal</u>	<u>Total</u>
800 <u>Other Objects</u>				
880 Refunds of Prior Years' Receipts				21,651.32
Total Other Objects				\$21,651.32
Total 5100 Debt Service / Other Expenditures and Financing Uses				\$21,651.32

General Fund (10)

5130 Refund of Prior Year Revenues / Receipts	<u>Elementary</u>	<u>Secondary</u>	<u>Federal</u>	<u>Total</u>
800 <u>Other Objects</u>				
880 Refunds of Prior Years' Receipts				21,651.32
Total Other Objects				\$21,651.32
Total 5130 Refund of Prior Year Revenues / Receipts				\$21,651.32

LEA : 113362303 Eastern Lancaster County SD

Printed 11/16/2023 8:47:51 AM

General Fund (10)

5200 Interfund Transfers – Out

Elementary                      Secondary                      Federal                      Total

900 Other Uses of Funds

932 Capital Reserve Fund Transfers Applicable To Fund 32 6,025,000.00

939 Other Fund Transfers 9,059.76

**Total Other Uses of Funds \$6,034,059.76**

**Total 5200 Interfund Transfers – Out \$6,034,059.76**

General Fund (10)

5230 Capital Projects Fund Transfers	<u>Elementary</u>	<u>Secondary</u>	<u>Federal</u>	<u>Total</u>
900 <u>Other Uses of Funds</u>				
932 Capital Reserve Fund Transfers Applicable To Fund 32				6,025,000.00
Total Other Uses of Funds				\$6,025,000.00
Total 5230 Capital Projects Fund Transfers				\$6,025,000.00

General Fund (10)

5250 Enterprise Fund Transfers	<u>Elementary</u>	<u>Secondary</u>	<u>Federal</u>	<u>Total</u>
900 <u>Other Uses of Funds</u>				
939 Other Fund Transfers				9,059.76
Total Other Uses of Funds				\$9,059.76
Total 5250 Enterprise Fund Transfers				\$9,059.76

LEA : 113362303 Eastern Lancaster County SD

Printed 11/16/2023 8:47:49 AM

Capital Reserve Fund - § 1431 (32)

4000 Facilities Acquisition, Construction and Improvement Services

Total

300 Purchased Professional and Technical Services

330 Other Professional Services	80,785.13
---------------------------------	-----------

Total Purchased Professional and Technical Services	\$80,785.13
---	-------------

400 Purchased Property Services

450 Construction Services	919,647.75
---------------------------	------------

490 Other Purchased Property Services	6,001.00
---------------------------------------	----------

Total Purchased Property Services	\$925,648.75
-----------------------------------	--------------

Total 4000 Facilities Acquisition, Construction and Improvement Services	\$1,006,433.88
--	----------------

LEA : 113362303     Eastern Lancaster County SD

Printed 11/16/2023 8:47:49 AM

Capital Reserve Fund - § 1431 (32)				
4200 Existing Site Improvement Services	<u>Elementary</u>	<u>Secondary</u>	<u>Federal</u>	<u>Total</u>
400 <u>Purchased Property Services</u>				
450 Construction Services				56,475.54
490 Other Purchased Property Services				6,001.00
Total Purchased Property Services				\$62,476.54
Total 4200 Existing Site Improvement Services				\$62,476.54

LEA : 113362303     Eastern Lancaster County SD

Printed 11/16/2023 8:47:49 AM

Capital Reserve Fund - § 1431 (32)

4400 Architecture and Engineering Services / Educational Specifications – Improvements	<u>Elementary</u>	<u>Secondary</u>	<u>Federal</u>	<u>Total</u>
300 <u>Purchased Professional and Technical Services</u>				
330 Other Professional Services				80,785.13
Total Purchased Professional and Technical Services				\$80,785.13
Total 4400 Architecture and Engineering Services / Educational Specifications – Improvements				\$80,785.13



LEA : 113362303     Eastern Lancaster County SD

Printed 11/16/2023 8:47:49 AM

Capital Reserve Fund - § 1431 (32)

4600 Existing Building Improvement Services

<u>Elementary</u>	<u>Secondary</u>	<u>Federal</u>	<u>Total</u>
-------------------	------------------	----------------	--------------

400 Purchased Property Services

450 Construction Services			863,172.21
---------------------------	--	--	------------

<b>Total Purchased Property Services</b>			<b>\$863,172.21</b>
--	--	--	---------------------

<b>Total 4600 Existing Building Improvement Services</b>			<b>\$863,172.21</b>
--	--	--	---------------------

	<u>General Fund(10)</u>	<u>Student Sponsored Activity Fund(21)</u>	<u>Public Purpose Trust(27)</u>	<u>Other Compt Approved (28)</u>	<u>Athletic / Activity(29)</u>
<b>1000 Instruction</b>					
1100 Regular Programs - Elementary / Secondary	25,483,941.80				
1200 Special Programs - Elementary / Secondary	8,851,203.62				
1300 Vocational Education	1,310,470.31				
1400 Other Instructional Programs - Elementary / Secondary	128,914.58				
1500 Nonpublic School Programs	76,530.84				
<b>Total Instruction</b>	<b>\$35,851,061.15</b>				
<b>2000 Support Services</b>					
2100 Support Services - Students	2,489,987.25				
2200 Support Services - Instructional Staff	3,837,149.35				
2300 Support Services - Administration	3,775,491.97				
2400 Support Services - Pupil Health	1,355,182.22				
2500 Support Services - Business	718,938.68				
2600 Operation and Maintenance of Plant Services	5,197,854.17				
2700 Student Transportation Services	3,324,610.08				
2800 Support Services - Central	3,605,941.67				
2900 Other Support Services	39,830.29				
<b>Total Support Services</b>	<b>\$24,344,985.68</b>				
<b>3000 Operation of Non-Instructional Services</b>					
3200 Student Activities	1,274,961.84				
3300 Community Services	16,723.45				
<b>Total Operation of Non-Instructional Services</b>	<b>\$1,291,685.29</b>				
<b>4000 Facilities Acquisition, Construction and Improvement Services</b>					
4200 Existing Site Improvement Services	79,659.20				
4300 Architecture and Engineering Services / Educational Specifications Development - Original and Additional	20,500.00				
4400 Architecture and Engineering Services / Educational Specifications - Improvements	(122.50)				
4600 Existing Building Improvement Services	107,711.32				
<b>Total Facilities Acquisition, Construction and Improvement Services</b>	<b>\$207,748.02</b>				
<b>5000 Other Expenditures and Financing Uses</b>					
5100 Debt Service / Other Expenditures and Financing Uses	21,651.32				
5200 Interfund Transfers - Out	6,034,059.76				
<b>Total Other Expenditures and Financing Uses</b>	<b>\$6,055,711.08</b>				
<b>TOTAL ACTUAL EXPENDITURES &amp; OTHER FINANCING USES</b>	<b>\$67,751,191.22</b>				

LEA : 113362303 Eastern Lancaster County SD

Printed 11/16/2023 8:47:53 AM

	<u>Capital Reserve (690.1850)(31)</u>	<u>Capital Reserve (1431)(32)</u>	<u>Other Capital Projects Fund(39)</u>	<u>Debt Service(40)</u>	<u>Permanent(90)</u>
<b>1000 Instruction</b>					
1100 Regular Programs - Elementary / Secondary					
1200 Special Programs - Elementary / Secondary					
1300 Vocational Education					
1400 Other Instructional Programs - Elementary / Secondary					
1500 Nonpublic School Programs					
<b>Total Instruction</b>					
<b>2000 Support Services</b>					
2100 Support Services - Students					
2200 Support Services - Instructional Staff					
2300 Support Services - Administration					
2400 Support Services - Pupil Health					
2500 Support Services - Business					
2600 Operation and Maintenance of Plant Services					
2700 Student Transportation Services					
2800 Support Services - Central					
2900 Other Support Services					
<b>Total Support Services</b>					
<b>3000 Operation of Non-Instructional Services</b>					
3200 Student Activities					
3300 Community Services					
<b>Total Operation of Non-Instructional Services</b>					
<b>4000 Facilities Acquisition, Construction and Improvement Services</b>					
4200 Existing Site Improvement Services		62,476.54			
4300 Architecture and Engineering Services / Educational Specifications Development - Original and Additional					
4400 Architecture and Engineering Services / Educational Specifications - Improvements		80,785.13			
4600 Existing Building Improvement Services		863,172.21			
<b>Total Facilities Acquisition, Construction and Improvement Services</b>		<b>\$1,006,433.88</b>			
<b>5000 Other Expenditures and Financing Uses</b>					
5100 Debt Service / Other Expenditures and Financing Uses					
5200 Interfund Transfers - Out					
<b>Total Other Expenditures and Financing Uses</b>					
<b>TOTAL ACTUAL EXPENDITURES &amp; OTHER FINANCING USES</b>		<b>\$1,006,433.88</b>			

LEA : 113362303 Eastern Lancaster County SD

Printed 11/16/2023 8:47:53 AM

	<u>Total</u>
<b>1000 <u>Instruction</u></b>	
1100 Regular Programs - Elementary / Secondary	25,483,941.80
1200 Special Programs - Elementary / Secondary	8,851,203.62
1300 Vocational Education	1,310,470.31
1400 Other Instructional Programs - Elementary / Secondary	128,914.58
1500 Nonpublic School Programs	76,530.84
<b>Total Instruction</b>	<b>\$35,851,061.15</b>
<b>2000 <u>Support Services</u></b>	
2100 Support Services - Students	2,489,987.25
2200 Support Services - Instructional Staff	3,837,149.35
2300 Support Services - Administration	3,775,491.97
2400 Support Services - Pupil Health	1,355,182.22
2500 Support Services - Business	718,938.68
2600 Operation and Maintenance of Plant Services	5,197,854.17
2700 Student Transportation Services	3,324,610.08
2800 Support Services - Central	3,605,941.67
2900 Other Support Services	39,830.29
<b>Total Support Services</b>	<b>\$24,344,985.68</b>
<b>3000 <u>Operation of Non-Instructional Services</u></b>	
3200 Student Activities	1,274,961.84
3300 Community Services	16,723.45
<b>Total Operation of Non-Instructional Services</b>	<b>\$1,291,685.29</b>
<b>4000 <u>Facilities Acquisition, Construction and Improvement Services</u></b>	
4200 Existing Site Improvement Services	142,135.74
4300 Architecture and Engineering Services / Educational Specifications Development - Original and Additional	20,500.00
4400 Architecture and Engineering Services / Educational Specifications - Improvements	80,662.63
4600 Existing Building Improvement Services	970,883.53
<b>Total Facilities Acquisition, Construction and Improvement Services</b>	<b>\$1,214,181.90</b>
<b>5000 <u>Other Expenditures and Financing Uses</u></b>	
5100 Debt Service / Other Expenditures and Financing Uses	21,651.32
5200 Interfund Transfers - Out	6,034,059.76
<b>Total Other Expenditures and Financing Uses</b>	<b>\$6,055,711.08</b>
<b>TOTAL ACTUAL EXPENDITURES &amp; OTHER FINANCING USES</b>	<b>\$68,757,625.10</b>

LEA : 113362303 Eastern Lancaster County SD

Printed 11/16/2023 8:48:03 AM

PSERS Salary Data (Salary Data should relate to the General Fund only)

Amount	Description	Amount
	Total Salary Base for salaries subject to PSERS withholding	24,954,627.08
	Total Federally Funded salaries subject to PSERS withholding	3,059,709.60

Title I Expenditure Data

Amount	Description	Amount
	Expenditures Funded with Current Title I Funds	1,045,482.79
	Expenditures Funded with Carry over Title I Funds	7,620.11
Total	Title I Expenditure Data	\$1,053,102.90

Title IV Revenue Data

Amount	Description	Amount
	Revenue from Title IV-A-1: Student Support and Academic Enrichment Grants	105,603.70
	Revenue from Title IV-B: 21st Century Community Learning Centers	

Title V Revenue Data

Amount	Description	Amount
	Revenue from Title V-B-2: Rural and Low-Income School Programs	
	Revenue from Title V-B-1: Small Rural School Achievement (Directly from the Federal Govt)	

1 .	<u>Current Special Education Expenditures within Function 1000</u> See list of exclusions in the note below.	6,808,641.36
2 .	<u>Current Special Education Expenditures within Function 2000</u> See list of exclusions in the note below.	4,595,370.21
2A.	<u>Current Special Education Expenditures within Sub-Function 2100</u> This data should also be included in line 2 above. See list of exclusions in the note below.	826,076.50
2B.	<u>Current Special Education Expenditures within Sub-Function 2200</u> This data should also be included in line 2 above. See list of exclusions in the note below.	1,896,705.57
2C.	<u>Current Special Education Expenditures within Sub-Function 2700</u> This data should also be included in line 2 above. See list of exclusions in the note below.	717,909.36
3.	<u>Current Special Education Expenditures within Sub-Function 3100</u> See list of exclusions in the note below.	
4.	<u>Current Special Education Expenditures within Sub-Function 3200</u> See list of exclusions in the note below.	

Note: The Current Special Education Expenditure amounts for each line should be calculated as follows:

- \* Include the total expenditures for special education costs from all governmental funds and the food service fund 51 for the function/sub-function requested
- \* Exclude data from sub-functions: 1243,1450,1500,1600,1807,2280,2450,2750,2990
- \* Exclude data from objects: 322,511,512,516,561,562,564,566,592,593,594,595,596,597,700,830,899

Benefits for Staff Relative to Collective Bargaining Agreements

	OBJECT	COVERED	NOT COVERED	TOTAL
10 General Fund	No Self Insurance data to report			
	211 Medical Insurance			
	212 Dental Insurance			
	215 Eye Care Insurance			
	216 Prescription Insurance			
	271 Self-Insurance Medical Benefits			
	272 Self-Insurance Dental Benefits			
	275 Self-Insurance Eye Care Benefits			
	276 Self-Insurance Prescription Benefits			
	FUND TOTAL			
50 Enterprise Fund	No Self Insurance data to report			
	211 Medical Insurance			
	212 Dental Insurance			
	215 Eye Care Insurance			
	216 Prescription Insurance			
	271 Self-Insurance Medical Benefits			
	272 Self-Insurance Dental Benefits			
	275 Self-Insurance Eye Care Benefits			
	276 Self-Insurance Prescription Benefits			
	FUND TOTAL			
60 Internal Service Fund				
	211 Medical Insurance			
	212 Dental Insurance			
	215 Eye Care Insurance			
	216 Prescription Insurance			
	271 Self-Insurance Medical Benefits	2,794,732.37	981,933.00	3,776,665.37
	272 Self-Insurance Dental Benefits	185,285.31	65,100.25	250,385.56
	275 Self-Insurance Eye Care Benefits			
	276 Self-Insurance Prescription Benefits	225,808.48	79,338.12	305,146.60
	FUND TOTAL	\$3,205,826.16	\$1,126,371.37	\$4,332,197.53
Total of All Funds		\$3,205,826.16	\$1,126,371.37	\$4,332,197.53

LEA : 113362303     Eastern Lancaster County SD

Printed 11/16/2023 8:48:08 AM

Function	Special Education (Prior Year)	Nonspecial Education (Prior Year)	Total (Prior Year)	Special Education (Current Year)	Nonspecial Education (Current Year)	Total (Current Year)
2120 Guidance Services	410,153.85	835,097.68	1,245,251.53	464,717.67	910,980.76	1,375,698.43
2140 Psychological Services	437,911.81	216,790.89	654,702.70	325,383.65	199,667.17	525,050.82
2150 Speech Pathology and Audiology Services						
2160 Social Work Services	172,746.37	117,361.60	290,107.97	206,738.00	177,061.38	383,799.38
2260 Instruction and Curriculum Development Services	1,550,371.40	1,183,298.47	2,733,669.87	1,868,378.81	880,665.58	2,749,044.39
2350 Legal and Accounting Services	21,354.17	45,623.35	66,977.52	37,775.67	49,147.58	86,923.25
2420 Medical Services	344,980.32		344,980.32	338,329.70	4,173.83	342,503.53
2440 Nursing Services	292,774.06	651,526.21	944,300.27	285,710.10	707,307.95	993,018.05
2700 Student Transportation Services	553,521.89	2,457,409.83	3,010,931.72	728,591.87	2,596,018.21	3,324,610.08
Total	\$3,783,813.87	\$5,507,108.03	\$9,290,921.90	\$4,255,625.47	\$5,525,022.46	\$9,780,647.93



LEA : 113362303 Eastern Lancaster County SD

Printed 11/16/2023 8:48:10 AM

(PRINCIPAL AMOUNTS ONLY)

**GOVERNMENTAL FUNDS/ ACTIVITIES**

	Short-Term Borrowing	General Obligation Bonds/Notes	Authority Building Obligations	Leases, Other Right to Use Arrangements	Extended Term Financing Agreements	Other Long Term Debt/Liabilities	OPEB, Comp Abs, Net Pension Liab	Total
1. Debt at Beginning of Fiscal Year						1,392,703.45	75,037,320.00	76,430,023.45
2. Additional Debt Incurred During Year				100,950.00		8,514.00	9,253,687.00	9,363,151.00
3. Retirements and Repayments						61,983.45	1,907,938.00	1,969,921.45
4. Debt at End of Fiscal Year				100,950.00		1,339,234.00	82,383,069.00	83,823,253.00
5. Accreted Interest at End Of Fiscal Year								
6. Total Debt and Accreted Interest				100,950.00		1,339,234.00	82,383,069.00	83,823,253.00
7. Current Portion P&I - Due within 1 year				26,858.00		93,277.56	4,549.00	124,684.56
8. Interest Paid during current fiscal year						31,686.21		31,686.21

(PRINCIPAL AMOUNTS ONLY)

**PROPRIETARY FUNDS**

	Short-Term Borrowing	General Obligation Bonds/Notes	Authority Building Obligations	Leases, Other Right to Use Arrangements	Extended Term Financing Agreements	Other Long Term Debt/Liabilities	OPEB, Comp Abs, Net Pension Liab	Total
1. Debt at Beginning of Fiscal Year							558,731.00	558,731.00
2. Additional Debt Incurred During Year							133,283.00	133,283.00
3. Retirements and Repayments							2,978.00	2,978.00
4. Debt at End of Fiscal Year							689,036.00	689,036.00
5. Accreted Interest at End Of Fiscal Year								
6. Total Debt and Accreted Interest							689,036.00	689,036.00
7. Current Portion P&I - Due within 1 year								
8. Interest Paid during current fiscal year								

LEA : 113362303     Eastern Lancaster County SD

Total Principal and Interest Payments Made by Your School - All Funds

Function	Fund		Principal (910)	Principal (920)	Interest (830)	Total (Principal +Interest)	Misc Other Uses (990)
5110	10	General Fund					
5110	20	Special Revenue Funds					
5110	30	Capital Projects Funds					
5110	40	Debt Service Fund					
5110	90	Permanent Fund					
5120	10	General Fund					
5120	20	Special Revenue Funds					
5120	30	Capital Projects Funds					
5120	40	Debt Service Fund					
5140	10	General Fund					
5140	20	Special Revenue Funds					
5140	30	Capital Projects Funds					
5140	40	Debt Service Fund					
5140	90	Permanent Fund					

Total Debt Payments - Governmental Funds

Function	Fund		Principal (910)	Principal (920)	Interest (830)	Total (Principal +Interest)
5110	50	Enterprise Fund				
5110	60	Internal Service Fund				
5120	50	Enterprise Fund				
5120	60	Internal Service Fund				
5140	50	Enterprise Fund				
5140	60	Internal Service Fund				

Total Debt Payments - Proprietary Funds

LEA : 113362303 Eastern Lancaster County SD

Printed 11/16/2023 8:48:10 AM

**Debt Details**  
**Governmental Funds/ Activities**

Debt Category	Debt Issue Date (MM/YYYY)	Principal Amounts Only				Current Portion Due Within One Year (Principal and Interest)	Interest Paid During Fiscal Year
		Debt at Beginning of Fiscal Year	Additions	Reductions / Repayments	Debt at End of Fiscal Year		
Leases and Other Right to Use Arrangements			100,950.00		100,950.00	26,858.00	
Other Long Term Debt/Liabilities		1,392,703.45	8,514.00	61,983.45	1,339,234.00	93,277.56	31,686.21
Compensated Absences		404,917.00	96,991.00		501,908.00	4,549.00	
Other Post-Employment Benefits (OPEB)		8,032,993.00	482,235.00	1,907,938.00	6,607,290.00		
Net Pension Liability		66,599,410.00	8,674,461.00		75,273,871.00		
Totals for Debt Entered:		\$76,430,023.45	\$9,363,151.00	\$1,969,921.45	\$83,823,253.00	\$124,684.56	\$31,686.21

**Bond Details**  
**Proprietary Funds**

Debt Category	Debt Issue Date (MM/YYYY)	Principal Amounts Only				Current Portion Due Within One Year (Principal and Interest)	Interest Paid During Fiscal Year
		Debt at Beginning of Fiscal Year	Additions	Reductions / Repayments	Debt at End of Fiscal Year		
Other Post-Employment Benefits (OPEB)		30,388.00		2,978.00	27,410.00		
Net Pension Liability		528,343.00	133,283.00		661,626.00		
Totals for Debt Entered:		\$558,731.00	\$133,283.00	\$2,978.00	\$689,036.00		

LEA : 113362303     Eastern Lancaster County SD

**General Fund (10)**

Section 1: Tuition/Purchased Services as Reported within Expenditure Detail	Amount
Tuition Reported in General Fund Expenditures 1000-560	2,971,350.29
Purchased Services in General Fund Expenditures 1000-594 and 1000-597	238.75
<b>Section 1 Total</b>	<b>\$2,971,589.04</b>

Section 2: Tuition Paid to Institution Types During Fiscal Year	Tuition Paid For Nonspecial Education	Tuition Paid For Special Education	Total
1 1306 Institutions			
2 Institutionalized Children's Programs		238.75	238.75
3 Juveniles Incarcerated in Adult Facilities			
4 Residential Treatment Facilities			
5 Other Local Education Agencies	52,227.21	67,979.56	120,206.77
6 Brick and Mortar Charter Schools	10,026.81		10,026.81
7 Cyber Charter Schools	807,945.86	793,568.10	1,601,513.96
8 Career and Technology Centers	670,604.89	361,094.94	1,031,699.83
9 Approved Private Schools			
10 PA Chartered Schools for the Deaf and Blind			
11 Private Residential Rehabilitative Institutions	1,850.50	68,102.52	69,953.02
12 Juvenile Detention Centers			
13 Special Program Jointures			
14 Other Tuition Not Included Elsewhere In This Section		137,949.90	137,949.90
<b>Section 2 Total</b>	<b>\$1,542,655.27</b>	<b>\$1,428,933.77</b>	<b>\$2,971,589.04</b>

Food Service / Cafeteria Operations Fund (51)

2000 Support Services		<u>Total</u>
300 <u>Purchased Professional and Technical Services</u>		
360 Employee Training and Development Services		2,346.83
Total Purchased Professional and Technical Services		\$2,346.83
500 <u>Other Purchased Services</u>		
580 Travel		1,610.27
Total Other Purchased Services		\$1,610.27
Total 2000 Support Services		\$3,957.10

Food Service / Cafeteria Operations Fund (51)

2800 Support Services – Central	<u>Elementary</u>	<u>Secondary</u>	<u>Federal</u>	<u>Total</u>
300 <u>Purchased Professional and Technical Services</u>				
360 Employee Training and Development Services				2,346.83
Total Purchased Professional and Technical Services				\$2,346.83
500 <u>Other Purchased Services</u>				
580 Travel			1,610.27	1,610.27
Total Other Purchased Services			\$1,610.27	\$1,610.27
Total 2800 Support Services – Central			\$1,610.27	\$3,957.10

Food Service / Cafeteria Operations Fund (51)

2830 Staff Services	<u>Elementary</u>	<u>Secondary</u>	<u>Federal</u>	<u>Total</u>
300 <u>Purchased Professional and Technical Services</u>				
360 Employee Training and Development Services				2,346.83
Total Purchased Professional and Technical Services				\$2,346.83
500 <u>Other Purchased Services</u>				
580 Travel			1,610.27	1,610.27
Total Other Purchased Services			\$1,610.27	\$1,610.27
Total 2830 Staff Services			\$1,610.27	\$3,957.10

Food Service / Cafeteria Operations Fund (51)

2836 Staff Development Services – Non-Instructional, Non-Certified Staff Only	<u>Elementary</u>	<u>Secondary</u>	<u>Federal</u>	<u>Total</u>
300 <u>Purchased Professional and Technical Services</u>				
360 Employee Training and Development Services				2,346.83
Total Purchased Professional and Technical Services				\$2,346.83
500 <u>Other Purchased Services</u>				
580 Travel			1,610.27	1,610.27
Total Other Purchased Services			\$1,610.27	\$1,610.27
Total 2836 Staff Development Services – Non-Instructional, Non-Certified Staff Only			\$1,610.27	\$3,957.10



LEA : 113362303      Eastern Lancaster County SD

Printed 11/16/2023 8:48:19 AM

Food Service / Cafeteria Operations Fund (51)

3000 Operation of Non-Instructional Services		Total
100	<u>Personnel Services – Salaries</u>	
100	Personnel Services – Salaries	224,597.67
Total Personnel Services – Salaries		\$224,597.67
200	<u>Personnel Services – Employee Benefits</u>	
210	Group Insurance – Contracted Provider	345.21
220	Social Security Contributions	16,094.01
230	PSERS Retirement Contributions	120,936.45
260	Workers' Compensation	1,408.10
270	Group Insurance – Self-Insurance	60,025.38
291	Other Retirement Plans	402.00
Total Personnel Services – Employee Benefits		\$199,211.15
300	<u>Purchased Professional and Technical Services</u>	
329	Professional Educational Services – Other	2,171.88
Total Purchased Professional and Technical Services		\$2,171.88
400	<u>Purchased Property Services</u>	
430	Repairs and Maintenance Services	22,024.01
Total Purchased Property Services		\$22,024.01
500	<u>Other Purchased Services</u>	
530	Communications	1,311.72
550	Printing and Binding	547.00
570	Food Service Management	439,498.69
580	Travel	1,278.00
Total Other Purchased Services		\$442,635.41
600	<u>Supplies</u>	
610	General Supplies	69,432.51
630	Food	795,302.39
650	Supplies & Fees – Technology Related	5,545.00
Total Supplies		\$870,279.90
700	<u>Property</u>	
740	Depreciation	25,265.38
Total Property		\$25,265.38
800	<u>Other Objects</u>	
810	Dues and Fees	217.50
Total Other Objects		\$217.50
Total 3000 Operation of Non-Instructional Services		\$1,786,402.90

LEA : 113362303 Eastern Lancaster County SD

Printed 11/16/2023 8:48:19 AM

Food Service / Cafeteria Operations Fund (51)

3100 Food Services	Elementary	Secondary	Federal	Total
100 <u>Personnel Services – Salaries</u>				
100 Personnel Services – Salaries				224,597.67
Total Personnel Services – Salaries				\$224,597.67
200 <u>Personnel Services – Employee Benefits</u>				
210 Group Insurance – Contracted Provider				345.21
220 Social Security Contributions				16,094.01
230 PSERS Retirement Contributions				120,936.45
260 Workers' Compensation				1,408.10
270 Group Insurance – Self-Insurance				60,025.38
291 Other Retirement Plans				402.00
Total Personnel Services – Employee Benefits				\$199,211.15
300 <u>Purchased Professional and Technical Services</u>				
329 Professional Educational Services – Other				2,171.88
Total Purchased Professional and Technical Services				\$2,171.88
400 <u>Purchased Property Services</u>				
430 Repairs and Maintenance Services				22,024.01
Total Purchased Property Services				\$22,024.01
500 <u>Other Purchased Services</u>				
530 Communications				1,311.72
550 Printing and Binding				547.00
570 Food Service Management			439,498.69	439,498.69
580 Travel				1,278.00
Total Other Purchased Services			\$439,498.69	\$442,635.41
600 <u>Supplies</u>				
610 General Supplies			69,432.51	69,432.51
630 Food			648,665.15	795,302.39
650 Supplies & Fees – Technology Related			5,545.00	5,545.00
Total Supplies			\$723,642.66	\$870,279.90
700 <u>Property</u>				
740 Depreciation			25,265.38	25,265.38
Total Property			\$25,265.38	\$25,265.38
800 <u>Other Objects</u>				
810 Dues and Fees			217.50	217.50
Total Other Objects			\$217.50	\$217.50
Total 3100 Food Services			\$1,188,624.23	\$1,786,402.90

Internal Service Fund (60)

2000 Support Services

Total

200 Personnel Services – Employee Benefits

250	Unemployment Compensation	1,637.04
270	Group Insurance – Self-Insurance	4,332,197.53
292	Health Savings Accounts	617,875.04

Total Personnel Services – Employee Benefits		\$4,951,709.61
--	--	----------------

800 Other Objects

810	Dues and Fees	221.37
-----	---------------	--------

Total Other Objects		\$221.37
---------------------	--	----------

Total 2000 Support Services		\$4,951,930.98
-----------------------------	--	----------------

Internal Service Fund (60)

2900 Other Support Services

<u>Elementary</u>	<u>Secondary</u>	<u>Federal</u>	<u>Total</u>
-------------------	------------------	----------------	--------------

200 Personnel Services – Employee Benefits

250	Unemployment Compensation			1,637.04
270	Group Insurance – Self-Insurance			4,332,197.53
292	Health Savings Accounts			617,875.04

<b>Total Personnel Services – Employee Benefits</b>				<b>\$4,951,709.61</b>
---	--	--	--	-----------------------

800 Other Objects

810	Dues and Fees			221.37
-----	---------------	--	--	--------

<b>Total Other Objects</b>				<b>\$221.37</b>
----------------------------	--	--	--	-----------------

<b>Total 2900 Other Support Services</b>				<b>\$4,951,930.98</b>
--	--	--	--	-----------------------

LEA : 113362303 Eastern Lancaster County SD

Printed 11/16/2023 8:48:17 AM

Internal Service Fund (60)

2910 Support Services Not Listed Elsewhere In the 2000 Series

Elementary                      Secondary                      Federal                      Total

200 Personnel Services – Employee Benefits

250	Unemployment Compensation			1,637.04
270	Group Insurance – Self-Insurance			4,332,197.53
292	Health Savings Accounts			617,875.04

<b>Total Personnel Services – Employee Benefits</b>				<b>\$4,951,709.61</b>
---	--	--	--	-----------------------

800 Other Objects

810	Dues and Fees			221.37
-----	---------------	--	--	--------

<b>Total Other Objects</b>				<b>\$221.37</b>
----------------------------	--	--	--	-----------------

<b>Total 2910 Support Services Not Listed Elsewhere In the 2000 Series</b>				<b>\$4,951,930.98</b>
--	--	--	--	-----------------------

	<u>Food Service(51)</u>	<u>Child Care Operations(52)</u>	<u>Other Enterprise(58)</u>	<u>Internal Service(60)</u>	<u>Total</u>
<b>2000 Support Services</b>					
2800 Support Services - Central	3,957.10				3,957.10
2900 Other Support Services				4,951,930.98	4,951,930.98
<b>Total Support Services</b>	<b>\$3,957.10</b>			<b>\$4,951,930.98</b>	<b>\$4,955,888.08</b>
<b>3000 Operation of Non-Instructional Services</b>					
3100 Food Services	1,786,402.90				1,786,402.90
<b>Total Operation of Non-Instructional Services</b>	<b>\$1,786,402.90</b>				<b>\$1,786,402.90</b>
<b>TOTAL ACTUAL EXPENDITURES &amp; OTHER FINANCING USES</b>	<b>\$1,790,360.00</b>			<b>\$4,951,930.98</b>	<b>\$6,742,290.98</b>

LEA : 113362303 Eastern Lancaster County SD

Printed 11/16/2023 8:48:26 AM

Fund	School	School Number	Local Personnel	Local Nonpersonnel	State Personnel	State Nonpersonnel	Federal Personnel	Federal Nonpersonnel	Total	Explanation
10										
	Blue Ball El Sch	2552	4,413,761.76	1,451,188.09	1,363,873.91	448,424.20	807,659.80	157,081.08	8,641,988.84	
	Brecknock El Sch	2500	4,640,374.27	1,599,588.89	1,433,898.29	494,280.77	790,539.00	161,935.20	9,120,616.42	
	Garden Spot MS	7209	4,758,823.91	1,721,543.55	1,470,499.80	531,965.35	674,005.78	73,532.83	9,230,371.22	
	Garden Spot SHS	2554	10,007,334.00	3,460,794.48	3,092,315.02	1,069,402.38	851,697.45	150,270.11	18,631,813.44	
	New Holland Elementary	4707	5,175,778.96	1,961,949.02	1,599,340.95	606,251.82	1,144,760.38	185,252.45	10,673,333.58	
Total			28,996,072.90	10,195,064.03	8,959,927.97	3,150,324.52	4,268,662.41	728,071.67	56,298,123.50	