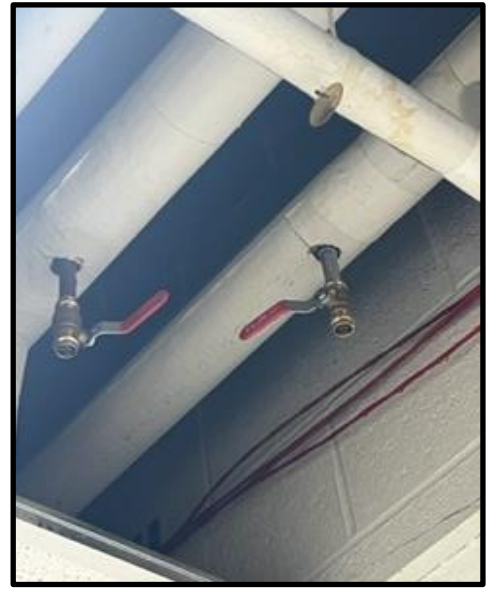
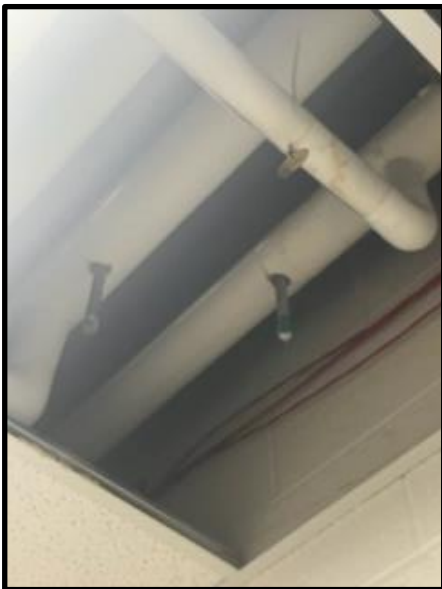


Board Update, April 2023

- Another holiday, another leak. The domestic hot water line ruptured in the Salisbury gym ceiling on Monday. 200-degree water was leaking into the gym. Thankfully, it was detected and repaired before much damage was done.



- Paradise also had a leak recently. In the original design copper pipe branched off of the main domestic water loop for possible future use/expansion. Those connections are starting to corrode due to water not flowing through them. We are replacing them with ball valves so that they can be periodically bled.



Following are pictures of the building job site:



Water retention basin below storage shed



Fill around the existing sewer plant



Grade level looking towards the middle school



Access road between buildings



Grade level looking towards the stadium



Grade along the west property line



Possible sink hole