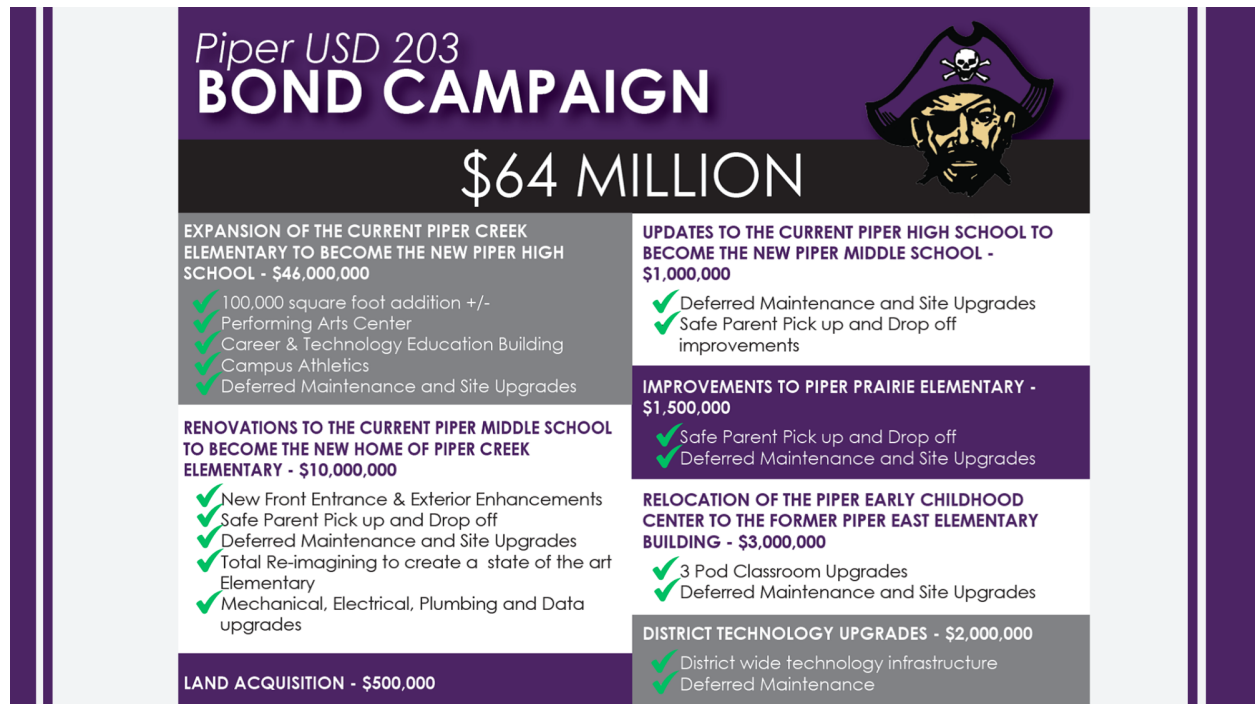


FAQs for Bond Page

What did the \$64 million Bond Campaign include:

Here is a graphic that was presented to the community in January 2020.



Because our community said yes, we have been able to accomplish the checked items above.

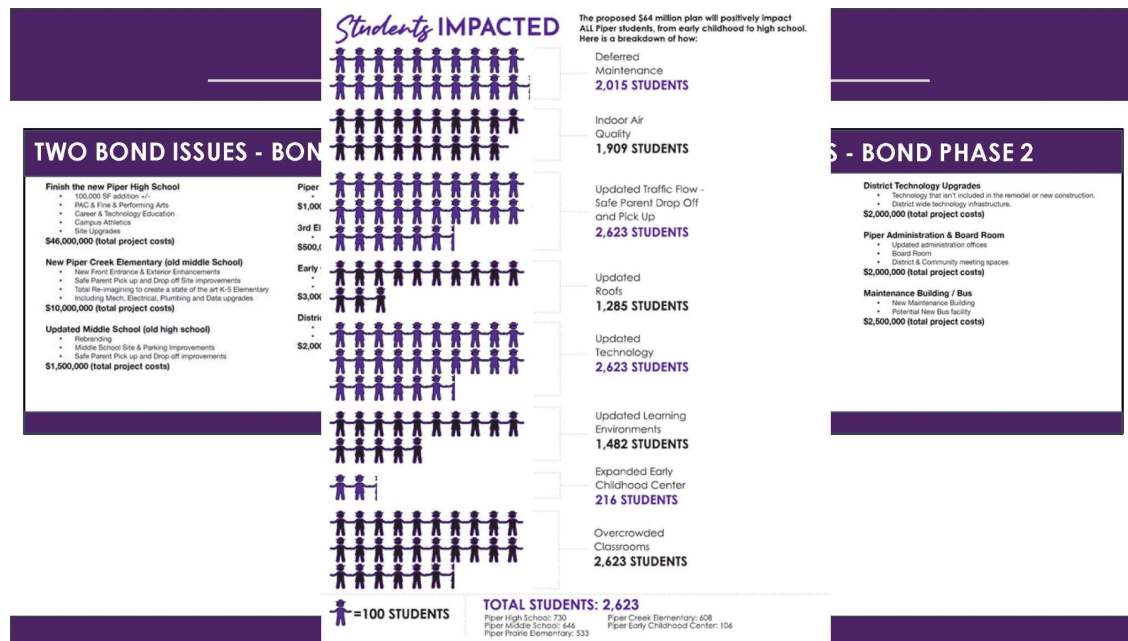
What campus athletics upgrades does the current bond cover?

- Competition Ready Turf Varsity Baseball Complex
- Competition-Ready Turfed Varsity Softball Complex
- South Athletic Building
 - Locker Rooms
 - Public Bathrooms
 - Concession stand for varsity baseball and softball complex
- All-Sport, State of the Art, Practice Facility
 - Track with grass infield and separate field events facility
 - Practice turf football field
 - Practice grass soccer field (existing PCE field)

[*Please refer to slides 42 through 50 for details and renderings*](#)

Will we need a second bond to be passed?

The two-step bond approach was presented to the community during the initial campaign proposal and the following graphics were shown:



Additionally, factors including Economic Instability, Construction Market Volatility, Labor Shortages, Supply Chain Issues, Inflation Rates and Construction Materials have played a role in this plan.



Your trusted data source since 1991.

Search FRED ...



Release Calendar FRED Tools v FRED News FRED Blog About FRED v

☆ Producer Price Index by Industry: New School Building Construction (PCU23622236222)

DOWNLOAD

Observation:
Dec 2022: 223.625
(+ more)
Updated: Aug 11, 2023

Units:
Index Dec 2005=100,
Not Seasonally Adjusted

Frequency:
Monthly

1Y | 5Y | 10Y | Max

2021-09-01 to 2022-12-01

EDIT GRAPH



INFLATION



24% INFLATION



\$15.4 MILLION

An increase of 24% inflation and a loss of \$15.4 million dollars in construction value in 16 months.

Third party construction cost index as denoted by the Federal Reserve Bank of Saint Louis as a reference.

What will a new bond include?

- Land acquisition for 3rd elementary school
- New Piper Creek exterior enhancements
- Complete Piper High School soccer, football and track complexes