

Building our Future in NKSD

*Dr. Laurynn Evans
Superintendent
Autumn/Winter 2023*



All in for All Students

Our Vision

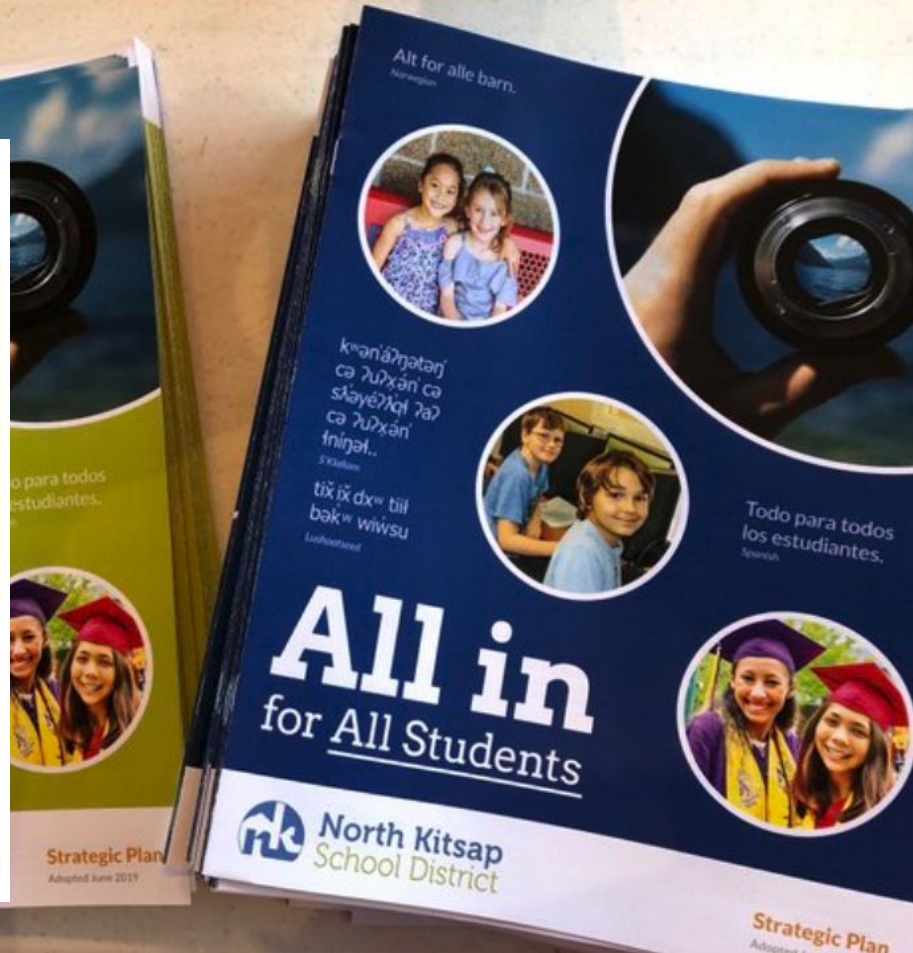
Every NKSD student is a confident, competent, creative and compassionate person who is prepared for a world yet to be imagined.

Our Mission

We foster a safe, collaborative, and intentional learning environment where each student is known by **name**, **strength** and **need**.

Our Core Values

1. We are all in for all students.
2. We model extraordinary care through our words and deeds.
3. We foster high expectations, continuous growth, and high achievement for everyone.
4. We celebrate our diversity, we embrace inclusion, and we respect our local heritage.
5. There is no limit to "better."



Goals and Measures of Student Success

Goal #1:

Early Foundations



Building a Bright Future

Every student will develop intellectual curiosity, social-emotional and cultural awareness, and academic skills for continuing success.

- 1.1 Increased percentage of students who demonstrate resilience, engagement in purposeful play, creativity in problem-solving, and prudent risk-taking in learning
- 1.2 Increased percentage of students who meet growth criteria in the developmental domains: social-emotional, physical, literacy development, mathematics, and scientific/technological
- 1.3 Increased opportunities for underserved student populations to achieve success.

Goal #2:

Whole Child



Embraced, Empowered, Resilient, Critical Thinkers

Every student will become an active learner and critical thinker, and will develop the self-discipline for peaceful and productive participation in class, school and community.

- 2.1 Increased percentage of students able to advocate for their own learning needs, interests and aspirations
- 2.2 Increased percentage of students who use 21st century skills -- critical thinking, creativity, collaboration, communication -- to tackle real-world, interdisciplinary challenges
- 2.3 Increased opportunities for students to model positive behaviors that reinforce their strengths, health, and physical well-being

Goals and Measures of Student Success

Goal #3:

Success for All Students



Equitable Access and Opportunity

Every student will meet rigorous academic standards, experience fair and effective discipline, and receive timely supports to build successful habits and outcomes.

- 3.1 Increased percentage of students who have continuous access to an advocate, mentor, or counselor
- 3.2 Increased access to rigorous courses, programs, and intervention
- 3.3 Increased proficiency rates for all students, and decreased opportunity gaps among student groups

Goal #4:

Future-Ready Graduates



Prepared for Life, Career, and College

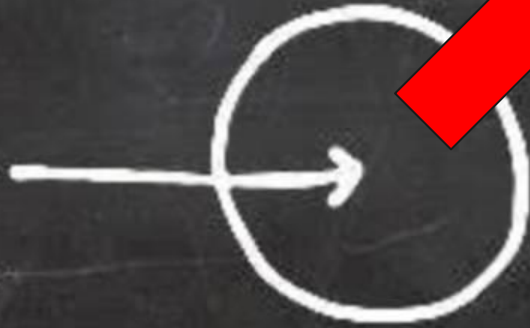
Every student will successfully navigate the critical transitions in their schooling and will graduate from high school ready for life, career, college, and productive post-secondary experiences.

- 4.1 Increased percentage of students with access to early intervention
- 4.2 Increased high school graduation rates
- 4.3 Increased percentage of seniors with a Career Plan letter outlining at least one post-high school pathway, such as: trades/technical training, college acceptance, military, industry certification, or professional apprenticeship



What we are doing in NKSD

Your
Comfort
Zone



Where the
magic happens

Work in Progress

Poulsbo MS

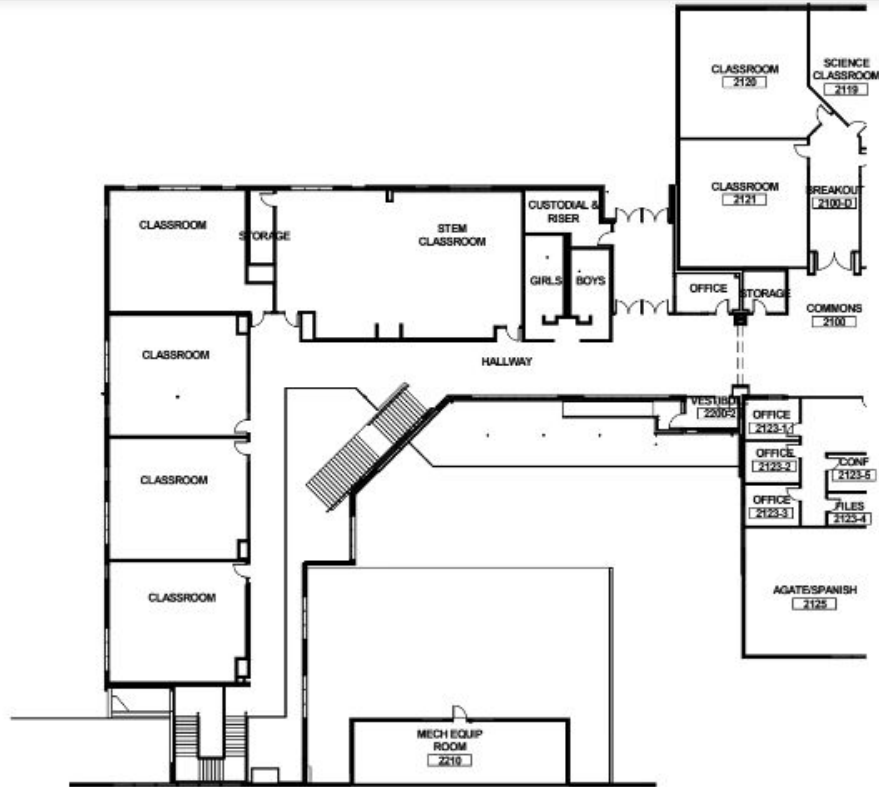
Suquamish Elementary

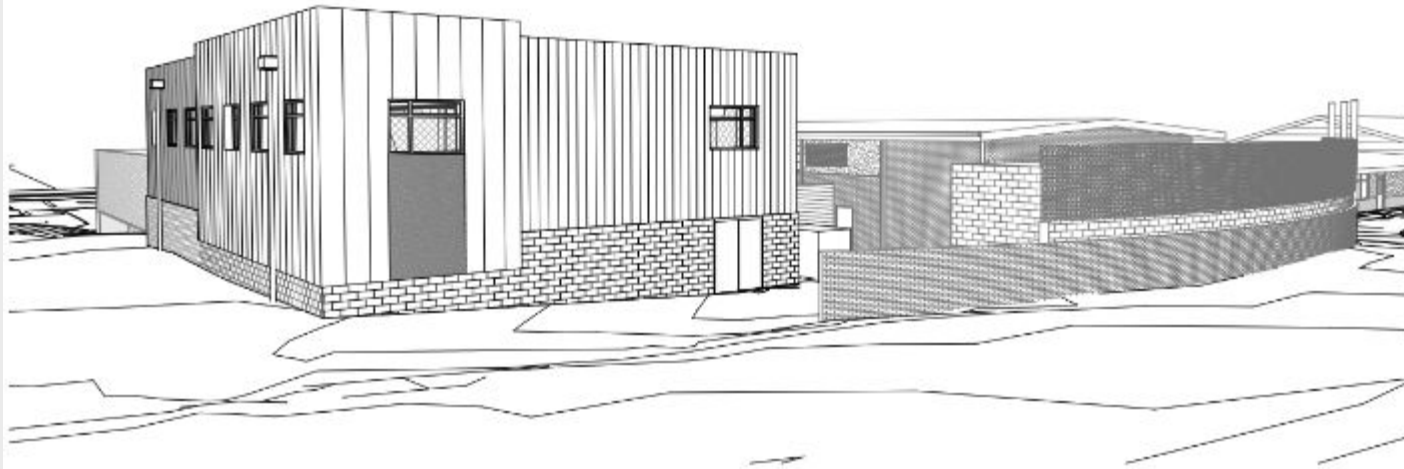
Security and maintenance projects continue



Poulsbo MS - Phase One underway!

10 new classrooms, eliminating portables and improving security





New gym for Suquamish Elementary (construction begins Spring 2024)

Levy vs Bond

CAPITAL LEVY VS BOND

50% approval to pass

Funds specific
smaller projects
such as small
additions, repairs,
maintenance or
technology updates

Generates yearly
funds for 3-6 years

60% approval to pass

Investment in major
projects such as
new construction
and larger additions
for more classroom
space

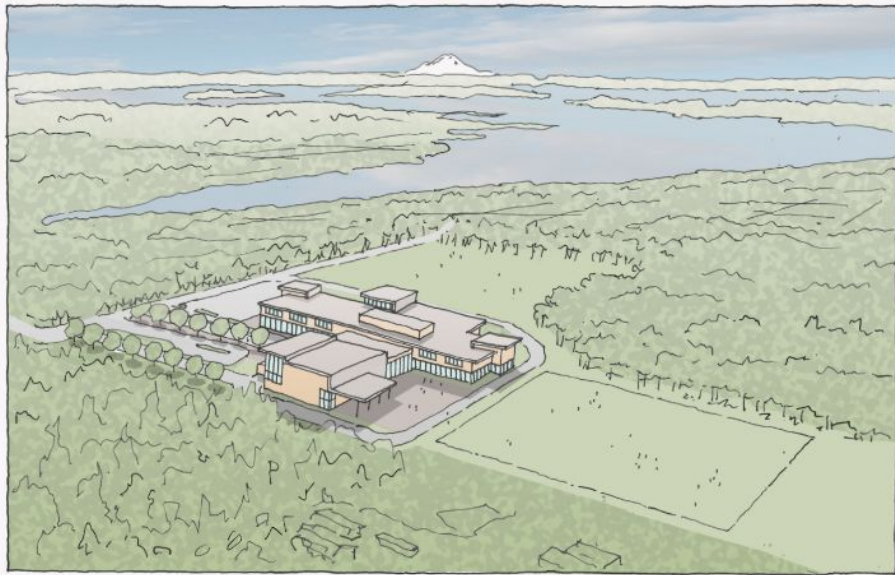
One-time, upfront
funding

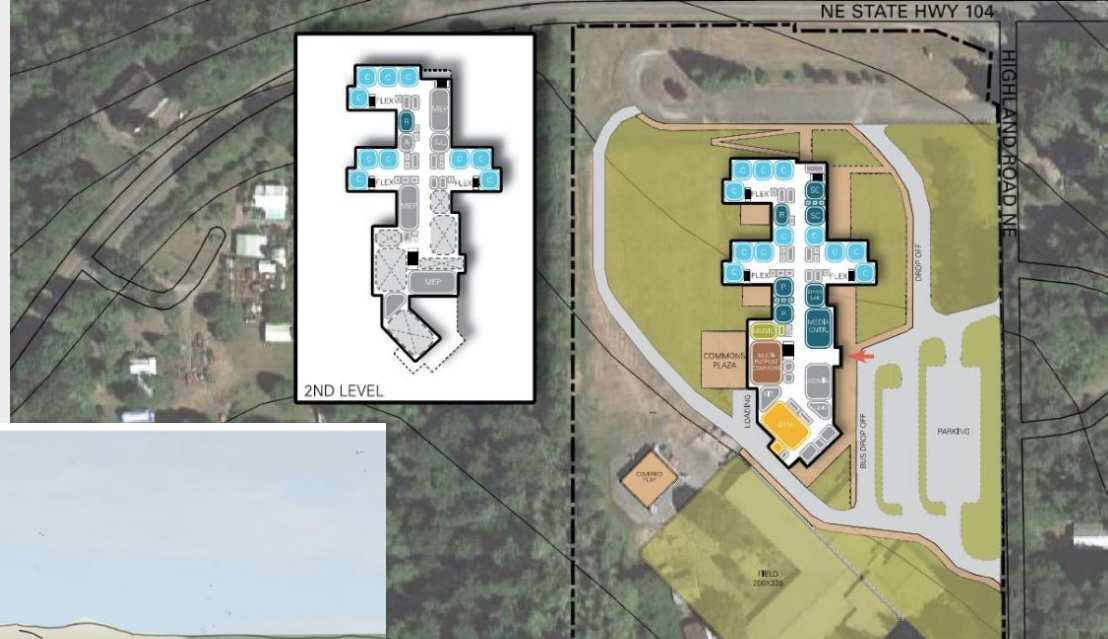
February 2024 Bond Measure

Quality classrooms for ALL students
Eliminate portables
Safety and Security
Improve play fields across NKSD



Modernize Pearson Elementary





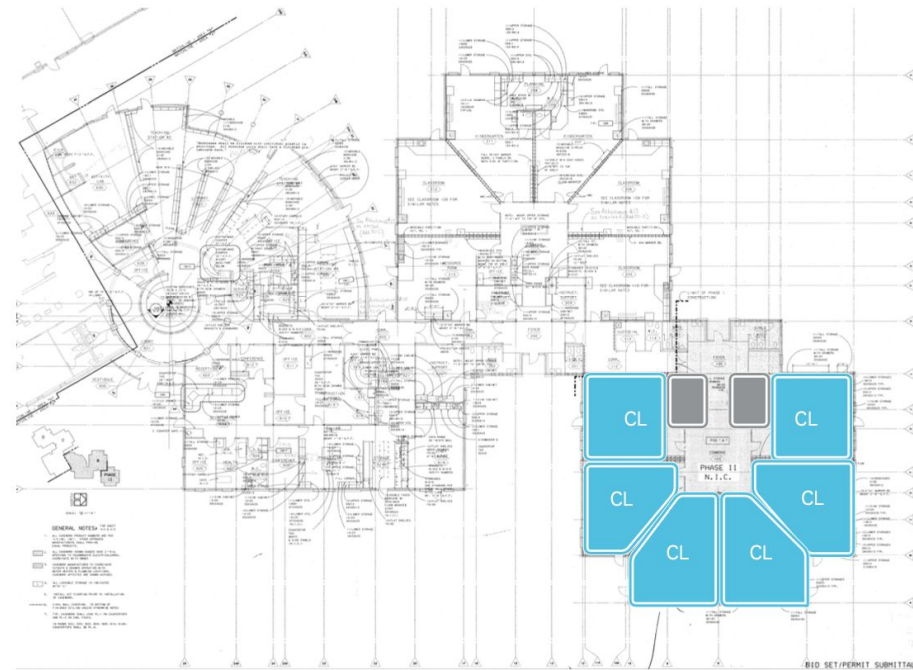
Modernize Wolfle Elementary

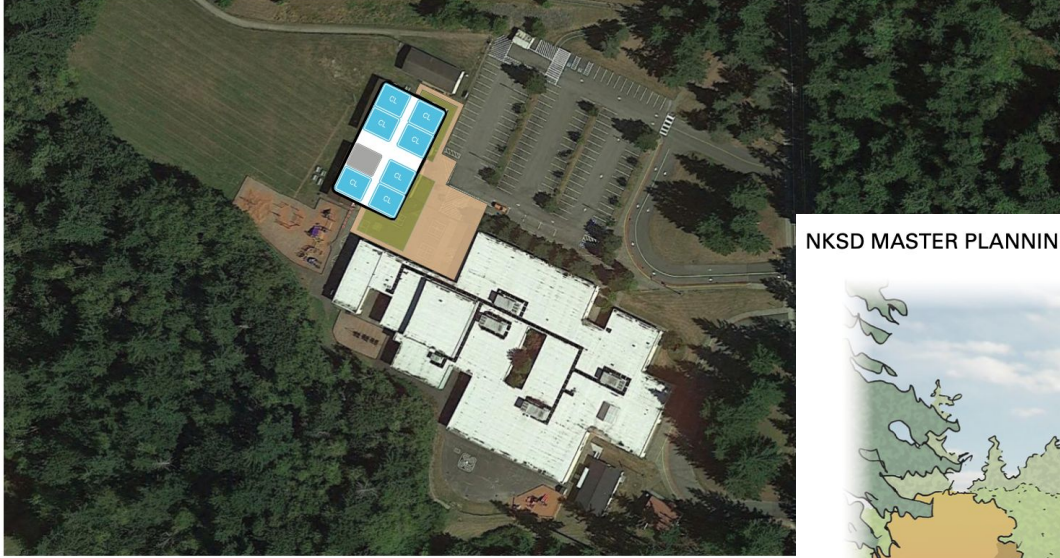


**Gordon Elementary:
construct final pod,
adding capacity to meet need**



TER PLANNING / GORDON ES - CLUSTER ADDITION



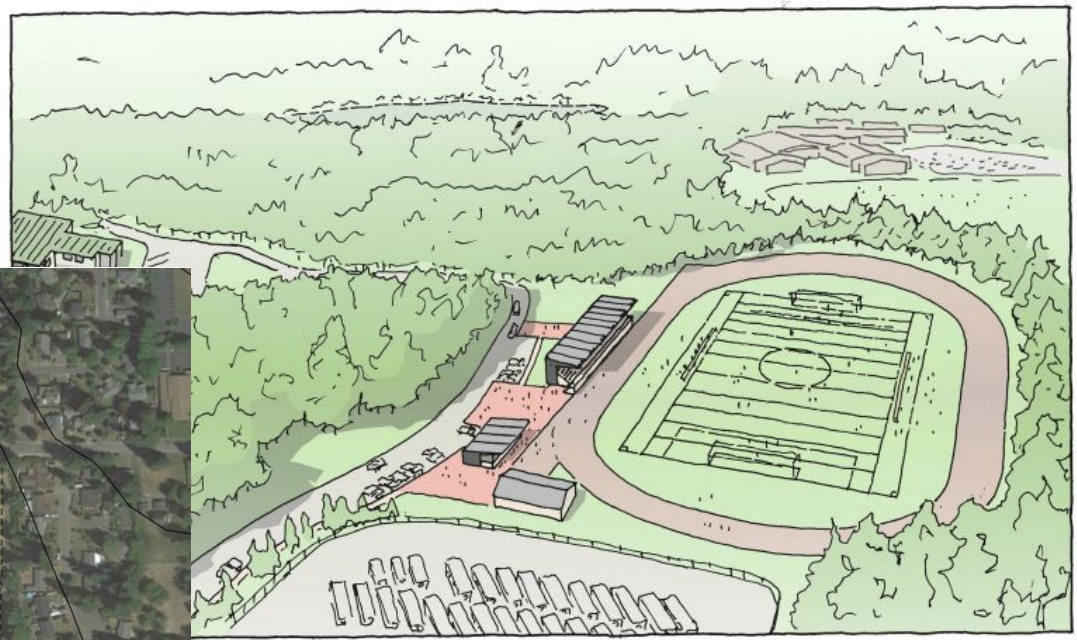


NKSD MASTER PLANNING / POULSBO ES - SAGE CLASSROOM COMPLEX - 7 CLASSROOMS



SAGE modular building at Poulsbo Elementary

Turf and light baseball and softball fields at KHS and NKHS

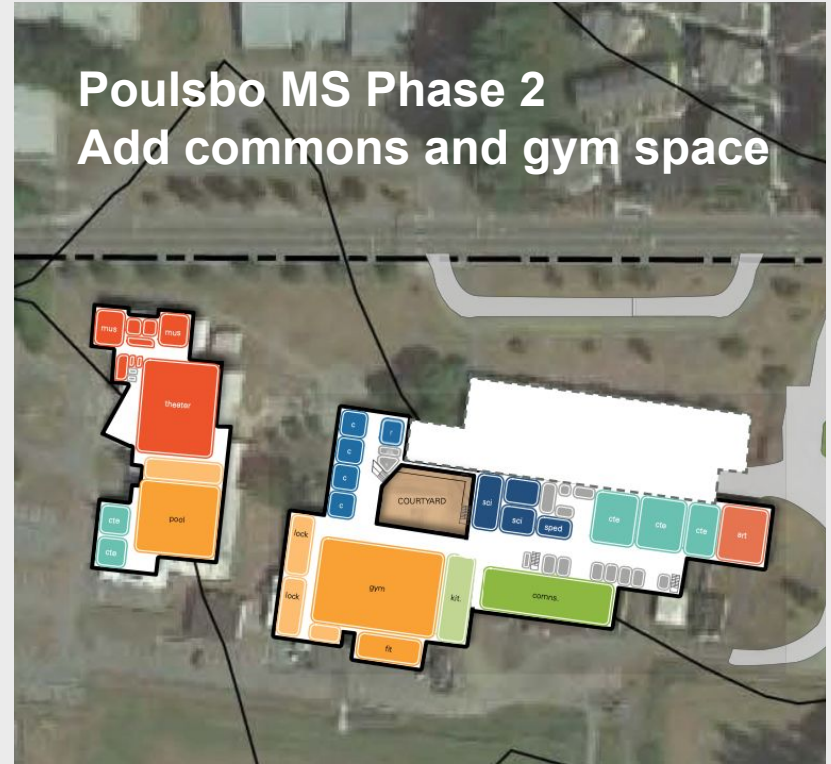


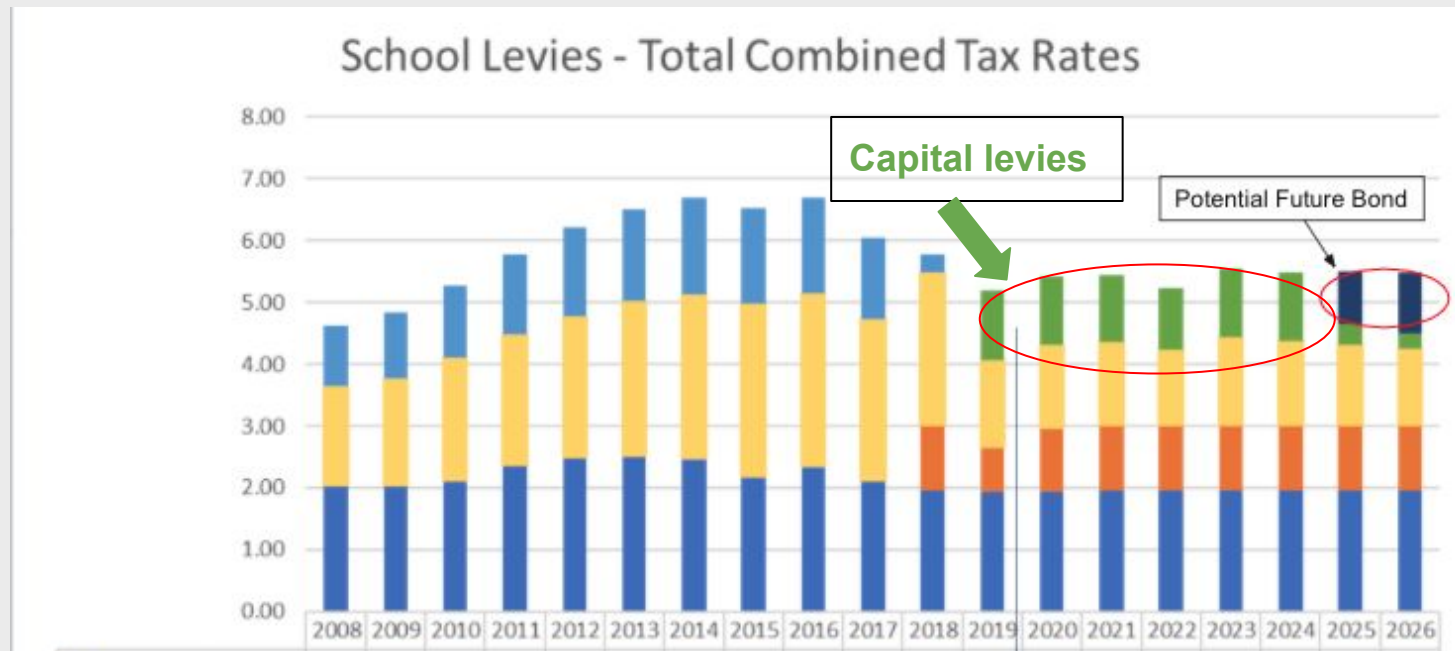
KHS grandstand and facilities
NKHS parking and access
improvements

Kingston MS mid-life refresh



Poulsbo MS Phase 2 Add commons and gym space

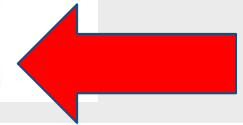
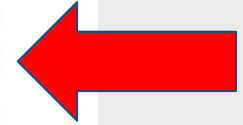




**Capital levy in 2018 and 2022 created “capacity”
A bond will use that capacity for long term investment**

North Kitsap School District's Tax Rate History

Historical Levy Rates						
Year	Bond Levy	Capital Projects Levy	Technology Levy	Transportation Vehicle Levy	EP&O Levy	Total
2001	\$1.38	\$--	\$--	\$--	\$2.81	\$4.20
2002	1.79	--	--	--	2.70	4.49
2003	1.76	--	--	--	2.66	4.42
2004	1.72	--	--	--	2.57	4.29
2005	1.61	--	--	--	2.39	3.99
2006	1.35	--	--	--	2.15	3.50
2007	1.09	--	--	--	1.75	2.84
2008	0.97	--	--	--	1.62	2.59
2009	1.06	--	--	--	1.74	2.79
2010	1.17	--	--	--	1.98	3.15
2011	1.29	--	--	--	2.11	3.40
2012	1.44	--	--	--	2.28	3.72
2013	1.49	--	--	--	2.51	4.00
2014	1.56	--	--	--	2.66	4.22
2015	1.55	--	--	--	2.80	4.35
2016	1.54	--	--	--	2.78	4.33
2017	1.31	--	--	--	2.62	3.93
2018	0.22	--	--	--	2.46	2.68
2019	--	1.14	--	--	1.40	2.54
2020	--	1.09	--	--	1.34	2.43
2021	--	1.09	--	--	1.34	2.42
2022	--	1.01	--	--	1.24	2.24



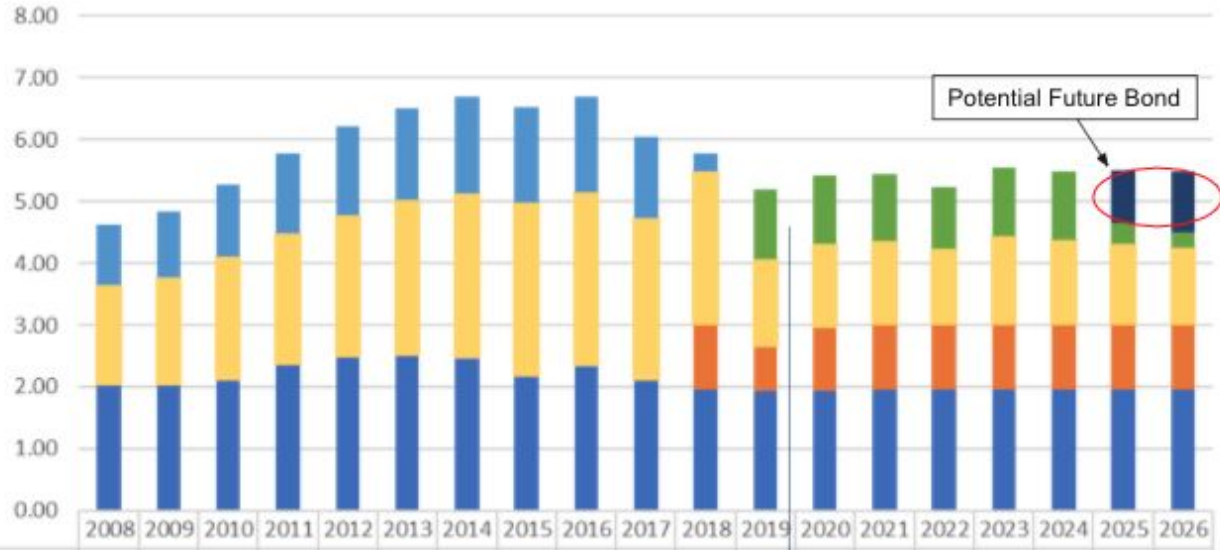
Comparable Tax Rates

Kitsap County School Districts 2022 Total Tax Rates						
District	Assessed Value	Bonds	EP&O	Capital Projects	Trans.	Total
Bremerton SD No. 100	\$ 6,159,620,354	\$ -	\$ 2.19	\$ 1.03	\$ -	\$ 3.22
South Kitsap SD No. 402	11,441,987,120	-	2.37	0.49	-	2.86
Central Kitsap SD No. 401	11,051,049,917	1.32	1.50	-	-	2.82
Bainbridge SD No. 303	10,228,737,054	1.02	0.98	0.49	-	2.48
North Kitsap SD No. 400	10,669,880,165	-	1.24	1.01	-	2.24

Comparable Tax Rates

Washington School Districts 2022 - With Similar Assessed Values						
District	Assessed Value	Bonds	EP&O	Capital Projects	Trans.	Total
Richland SD No. 400	\$ 10,853,832,797	\$ 1.84	\$ 2.40	\$ 0.39	\$ -	\$ 4.62
Tahoma SD No. 409	9,269,307,596	1.65	1.81	0.44	-	3.89
Marysville SD No. 25	11,288,870,552	0.81	2.35	0.53	-	3.69
Kennewick SD No. 17	10,906,102,574	1.60	1.67	0.37	-	3.63
Clover Park SD No. 400	9,362,181,825	1.10	2.36	-	-	3.46
Pasco SD No. 1	10,170,113,930	1.85	1.46	-	-	3.30
South Kitsap SD No. 402	11,441,987,120	-	2.37	0.49	-	2.86
Central Kitsap SD No. 401	11,051,049,917	1.32	1.50	-	-	2.82
Monroe SD No. 103	8,834,359,920	0.82	1.79	-	-	2.61
Bainbridge SD No. 303	10,228,737,054	1.02	0.98	0.49	-	2.48
North Kitsap SD No. 400	10,669,880,165	-	1.24	1.01	-	2.24

School Levies - Total Combined Tax Rates



\$242 million total bond amount
\$50/year for a home valued at \$500,000
Approximately \$.10 per \$1000 of assessed valuation







www.nkschools.org | Dr. Laurynn Evans | levans@nkschools.org